

Exam Questions MCPA-Level-1

MuleSoft Certified Platform Architect - Level 1

<https://www.2passeasy.com/dumps/MCPA-Level-1/>



NEW QUESTION 1

How are an API implementation, API client, and API consumer combined to invoke and process an API?

- A. The API consumer creates an API implementation, which receives API invocations from an API such that they are processed for an API client
- B. The API client creates an API consumer, which receives API invocations from an API such that they are processed for an API implementation
- C. The API consumer creates an API client, which sends API invocations to an API such that they are processed by an API implementation
- D. The API client creates an API consumer, which sends API invocations to an API such that they are processed by an API implementation

Answer: C

Explanation:

Correct Answer

The API consumer creates an API client, which sends API invocations to an API such that they are processed by an API implementation

***** Terminology:

>> API Client - It is a piece of code or program that is written to invoke an API

>> API Consumer - An owner/entity who owns the API Client. API Consumers write API clients.

>> API - The provider of the API functionality. Typically an API Instance on API Manager where they are managed and operated.

>> API Implementation - The actual piece of code written by API provider where the functionality of the API is implemented. Typically, these are Mule Applications running on Runtime Manager.

NEW QUESTION 2

What best describes the Fully Qualified Domain Names (FQDNs), also known as DNS entries, created when a Mule application is deployed to the CloudHub Shared Worker Cloud?

- A. A fixed number of FQDNs are created, IRRESPECTIVE of the environment and VPC design
- B. The FQDNs are determined by the application name chosen, IRRESPECTIVE of the region
- C. The FQDNs are determined by the application name, but can be modified by an administrator after deployment
- D. The FQDNs are determined by both the application name and the Anypoint Platform organization

Answer: B

Explanation:

Correct Answer

The FQDNs are determined by the application name chosen, IRRESPECTIVE of the region

>> When deploying applications to Shared Worker Cloud, the FQDN are always determined by application name chosen.

>> It does NOT matter what region the app is being deployed to.

>> Although it is fact and true that the generated FQDN will have the region included in it (Ex:

exp-salesorder-api.au-s1.cloudhub.io), it does NOT mean that the same name can be used when deploying to another CloudHub region.

>> Application name should be universally unique irrespective of Region and Organization and solely determines the FQDN for Shared Load Balancers.

NEW QUESTION 3

What best explains the use of auto-discovery in API implementations?

- A. It makes API Manager aware of API implementations and hence enables it to enforce policies
- B. It enables Anypoint Studio to discover API definitions configured in Anypoint Platform
- C. It enables Anypoint Exchange to discover assets and makes them available for reuse
- D. It enables Anypoint Analytics to gain insight into the usage of APIs

Answer: A

Explanation:

Correct Answer

It makes API Manager aware of API implementations and hence enables it to enforce policies.

>> API Autodiscovery is a mechanism that manages an API from API Manager by pairing the deployed application to an API created on the platform.

>> API Management includes tracking, enforcing policies if you apply any, and reporting API analytics.

>> Critical to the Autodiscovery process is identifying the API by providing the API name and version. References:

<https://docs.mulesoft.com/api-manager/2.x/api-auto-discovery-new-concept> <https://docs.mulesoft.com/api-manager/1.x/api-auto-discovery>

<https://docs.mulesoft.com/api-manager/2.x/api-auto-discovery-new-concept>

NEW QUESTION 4

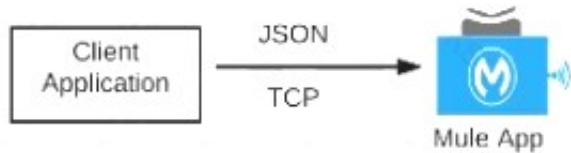
What Mule application can have API policies applied by

Anypoint Platform to the endpoint exposed by that Mule application?

A) A Mule application that accepts requests over HTTP/1.x



B) A Mule application that accepts JSON requests over TCP but is NOT required to provide a response



C) A Mule application that accepts JSON requests over WebSocket



D) A Mule application that accepts gRPC requests over HTTP/2



- A. Option A
- B. Option B
- C. Option C
- D. Option D

Answer: A

Explanation:

Correct Answer
 Option A

>> Anypoint API Manager and API policies are applicable to all types of HTTP/1.x APIs.
 >> They are not applicable to WebSocket APIs, HTTP/2 APIs and gRPC APIs

NEW QUESTION 5

Which of the following best fits the definition of API-led connectivity?

- A. API-led connectivity is not just an architecture or technology but also a way to organize people and processes for efficient IT delivery in the organization
- B. API-led connectivity is a 3-layered architecture covering Experience, Process and System layers
- C. API-led connectivity is a technology which enabled us to implement Experience, Process and System layer based APIs

Answer: A

Explanation:

Correct Answer

API-led connectivity is not just an architecture or technology but also a way to organize people and processes for efficient IT delivery in the organization.

NEW QUESTION 6

Say, there is a legacy CRM system called CRM-Z which is offering below functions:

- * 1. Customer creation
- * 2. Amend details of an existing customer
- * 3. Retrieve details of a customer
- * 4. Suspend a customer

- A. Implement a system API named customerManagement which has all the functionalities wrapped in it asvarious operations/resources
- B. Implement different system APIs named createCustomer, amendCustomer, retrieveCustomer and suspendCustomer as they are modular and has seperation of concerns
- C. Implement different system APIs named createCustomerInCRMZ, amendCustomerInCRMZ, retrieveCustomerFromCRMZ and suspendCustomerInCRMZ as they are modular and has seperation of concerns

Answer: B

Explanation:

Correct Answer

Implement different system APIs named createCustomer, amendCustomer, retrieveCustomer and suspendCustomer as they are modular and has seperation of concerns

>> It is quite normal to have a single API and different Verb + Resource combinations. However, this fits well for an Experience API or a Process API but not a best architecture style for System APIs. So, option with just one customerManagement API is not the best choice here.

>> The option with APIs in createCustomerInCRMZ format is next close choice w.r.t modularization and less maintenance but the naming of APIs is directly coupled with the legacy system. A better foreseen approach would be to name your APIs by abstracting the backend system names as it allows seamless replacement/migration of any backend system anytime. So, this is not the correct choice too.

>> createCustomer, amendCustomer, retrieveCustomer and suspendCustomer is the right approach and is the best fit compared to other options as they are both modular and same time got the names decoupled from backend system and it has covered all requirements a System API needs.

NEW QUESTION 7

A code-centric API documentation environment should allow API consumers to investigate and execute API client source code that demonstrates invoking one or more APIs as part of representative scenarios.

What is the most effective way to provide this type of code-centric API documentation environment using Anypoint Platform?

- A. Enable mocking services for each of the relevant APIs and expose them via their Anypoint Exchange entry
- B. Ensure the APIs are well documented through their Anypoint Exchange entries and API Consoles and share these pages with all API consumers
- C. Create API Notebooks and include them in the relevant Anypoint Exchange entries
- D. Make relevant APIs discoverable via an Anypoint Exchange entry

Answer: C

Explanation:

Correct Answer

Create API Notebooks and Include them in the relevant Anypoint exchange entries

>> API Notebooks are the one on Anypoint Platform that enable us to provide code-centric API documentation

NEW QUESTION 8

What is a best practice when building System APIs?

- A. Document the API using an easily consumable asset like a RAML definition
- B. Model all API resources and methods to closely mimic the operations of the backend system
- C. Build an Enterprise Data Model (Canonical Data Model) for each backend system and apply it to System APIs
- D. Expose to API clients all technical details of the API implementation's interaction with the backend system

Answer: B

Explanation:

Correct Answer

Model all API resources and methods to closely mimic the operations of the backend system.

>> There are NO fixed and straight best practices while opting data models for APIs. They are completely contextual and depends on number of factors. Based upon those factors, an enterprise can choose if they have to go with Enterprise Canonical Data Model or Bounded Context Model etc.

>> One should NEVER expose the technical details of API implementation to their API clients. Only the API interface/ RAML is exposed to API clients.

>> It is true that the RAML definitions of APIs should be as detailed as possible and should reflect most of the documentation. However, just that is NOT enough to call your API as best documented API. There should be even more documentation on Anypoint Exchange with API Notebooks etc. to make and create a developer friendly API and repository..

>> The best practice always when creating System APIs is to create their API interfaces by modeling their resources and methods to closely reflect the operations and functionalities of that backend system.

NEW QUESTION 9

What is true about the technology architecture of Anypoint VPCs?

- A. The private IP address range of an Anypoint VPC is automatically chosen by CloudHub
- B. Traffic between Mule applications deployed to an Anypoint VPC and on-premises systems can stay within a private network
- C. Each CloudHub environment requires a separate Anypoint VPC
- D. VPC peering can be used to link the underlying AWS VPC to an on-premises (non AWS) private network

Answer: B

Explanation:

Correct Answer

Traffic between Mule applications deployed to an Anypoint VPC and on-premises systems can stay within a private network

>> The private IP address range of an Anypoint VPC is NOT automatically chosen by CloudHub. It is chosen by us at the time of creating VPC using the CIDR blocks.

CIDR Block: The size of the Anypoint VPC in Classless Inter-Domain Routing (CIDR) notation.

For example, if you set it to 10.111.0.0/24, the Anypoint VPC is granted 256 IP addresses from 10.111.0.0 to 10.111.0.255.

Ideally, the CIDR Blocks you choose for the Anypoint VPC come from a private IP space, and should not overlap with any other Anypoint VPC's CIDR Blocks, or any CIDR Blocks in use in your corporate network.

← Create VPC

[Learn more about VPCs](#)

General Information

Name	vpc1	
Region	US East (N. Virginia)	▼
CIDR Block	10.0.0.0/16	
Environments	Design ✕	▼
	<input checked="" type="checkbox"/> Set as default VPC <input type="radio"/>	
Business Groups	MyBusinessGroup (MyOrg)	⌵

that each CloudHub environment requires a separate Anypoint VPC. Once an Anypoint VPC is created, we can choose a same VPC by multiple environments. However, it is generally a best and recommended practice to always have separate Anypoint VPCs for Non-Prod and Prod environments.
 >> We use Anypoint VPN to link the underlying AWS VPC to an on-premises (non AWS) private network. NOT VPC Peering.

NEW QUESTION 10

An API implementation is being designed that must invoke an Order API, which is known to repeatedly experience downtime. For this reason, a fallback API is to be called when the Order API is unavailable. What approach to designing the invocation of the fallback API provides the best resilience?

- A. Search Anypoint Exchange for a suitable existing fallback API, and then implement invocations to this fallback API in addition to the Order API
- B. Create a separate entry for the Order API in API Manager, and then invoke this API as a fallback API if the primary Order API is unavailable
- C. Redirect client requests through an HTTP 307 Temporary Redirect status code to the fallback API whenever the Order API is unavailable
- D. Set an option in the HTTP Requester component that invokes the Order API to instead invoke a fallback API whenever an HTTP 4xx or 5xx response status code is returned from the Order API

Answer: A

Explanation:

Correct Answer

Search Anypoint exchange for a suitable existing fallback API, and then implement invocations to this fallback API in addition to the order API

>> It is not ideal and good approach, until unless there is a pre-approved agreement with the API clients that they will receive a HTTP 3xx temporary redirect status code and they have to implement fallback logic their side to call another API.

>> Creating separate entry of same Order API in API manager would just create an another instance of it on top of same API implementation. So, it does NO GOOD by using clone of same API as a fallback API. Fallback API should be ideally a different API implementation that is not same as primary one.

>> There is NO option currently provided by Anypoint HTTP Connector that allows us to invoke a fallback API when we receive certain HTTP status codes in response.

The only statement TRUE in the given options is to Search Anypoint exchange for a suitable existing fallback API, and then implement invocations to this fallback API in addition to the order API.

NEW QUESTION 10

A set of tests must be performed prior to deploying API implementations to a staging environment. Due to data security and access restrictions, untested APIs cannot be granted access to the backend systems, so instead mocked data must be used for these tests. The amount of available mocked data and its contents is sufficient to entirely test the API implementations with no active connections to the backend systems. What type of tests should be used to incorporate this mocked data?

- A. Integration tests
- B. Performance tests
- C. Functional tests (Blackbox)
- D. Unit tests (Whitebox)

Answer: D

Explanation:

Correct Answer

Unit tests (Whitebox)

NEW QUESTION 14

When could the API data model of a System API reasonably mimic the data model exposed by the corresponding backend system, with minimal improvements over the backend system's data model?

- A. When there is an existing Enterprise Data Model widely used across the organization
- B. When the System API can be assigned to a bounded context with a corresponding data model
- C. When a pragmatic approach with only limited isolation from the backend system is deemed appropriate
- D. When the corresponding backend system is expected to be replaced in the near future

Answer: C

Explanation:

Correct Answer

When a pragmatic approach with only limited isolation from the backend system is deemed appropriate.

***** General guidance w.r.t choosing Data Models:

>> If an Enterprise Data Model is in use then the API data model of System APIs should make use of data types from that Enterprise Data Model and the corresponding API implementation should translate between these data types from the Enterprise Data Model and the native data model of the backend system.

>> If no Enterprise Data Model is in use then each System API should be assigned to a Bounded Context, the API data model of System APIs should make use of data types from the corresponding Bounded Context Data Model and the corresponding API implementation should translate between these data types from the Bounded Context Data Model and the native data model of the backend system. In this scenario, the data types in the Bounded Context Data Model are defined purely in terms of their business characteristics and are typically not related to the native data model of the backend system. In other words, the translation effort may be significant.

>> If no Enterprise Data Model is in use, and the definition of a clean Bounded Context Data Model is considered too much effort, then the API data model of System APIs should make use of data types that approximately mirror those from the backend system, same semantics and naming as backend system, lightly sanitized, expose all fields needed for the given System API's functionality, but not significantly more and making good use of REST conventions.

The latter approach, i.e., exposing in System APIs an API data model that basically mirrors that of the backend system, does not provide satisfactory isolation from backend systems through the System API tier on its own. In particular, it will typically not be possible to "swap out" a backend system without significantly changing all System APIs in front of that backend system and therefore the API implementations of all Process APIs that depend on those System APIs! This is so because it is not desirable to prolong the life of a previous backend system's data model in the form of the API data model of System APIs that now front a new backend system. The API data models of System APIs following this approach must therefore change when the backend system is replaced.

On the other hand:

>> It is a very pragmatic approach that adds comparatively little overhead over accessing the backend system directly

>> Isolates API clients from intricacies of the backend system outside the data model (protocol, authentication, connection pooling, network address, ...)

>> Allows the usual API policies to be applied to System APIs

>> Makes the API data model for interacting with the backend system explicit and visible, by exposing it in the RAML definitions of the System APIs

>> Further isolation from the backend system data model does occur in the API implementations of the Process API tier

NEW QUESTION 16

Question 10: Skipped

An API implementation returns three X-RateLimit-* HTTP response headers to a requesting API client. What type of information do these response headers indicate to the API client?

- A. The error codes that result from throttling
- B. A correlation ID that should be sent in the next request
- C. The HTTP response size
- D. The remaining capacity allowed by the API implementation

Answer: D

Explanation:

Correct Answer

The remaining capacity allowed by the API implementation.

>> Reference:

<https://docs.mulesoft.com/api-manager/2.x/rate-limiting-and-throttling-sla-based-policies#response-headers>

Response Headers

Three headers are included in request responses that inform users about the SLA restrictions and inform them when nearing the threshold.

When the SLA enforces multiple policies that limit request throughput, a single set of headers pertaining to the most restrictive of the policies provides this information.

For example, a user of your API may receive a response that includes these headers:

```
X-RateLimit-Limit: 20
X-RateLimit-Remaining: 14
X-RateLimit-Reset: 19100
```

Within the next 19100 milliseconds, only 14 more requests are allowed by the SLA, which is set to allow 20 within this time-window.

NEW QUESTION 20

An Order API must be designed that contains significant amounts of integration logic and involves the invocation of the Product API.

The power relationship between Order API and Product API is one of "Customer/Supplier", because the Product API is used heavily throughout the organization and is developed by a dedicated development team located in the office of the CTO.

What strategy should be used to deal with the API data model of the Product API within the Order API?

- A. Convince the development team of the Product API to adopt the API data model of the Order API such that the integration logic of the Order API can work with one consistent internal data model
- B. Work with the API data types of the Product API directly when implementing the integration logic of the Order API such that the Order API uses the same (unchanged) data types as the Product API
- C. Implement an anti-corruption layer in the Order API that transforms the Product API data model into internal data types of the Order API
- D. Start an organization-wide data modeling initiative that will result in an Enterprise Data Model that will then be used in both the Product API and the Order API

Answer: C

Explanation:

Correct Answer

Convince the development team of the product API to adopt the API data model of the Order API such that integration logic of the Order API can work with one consistent internal data model

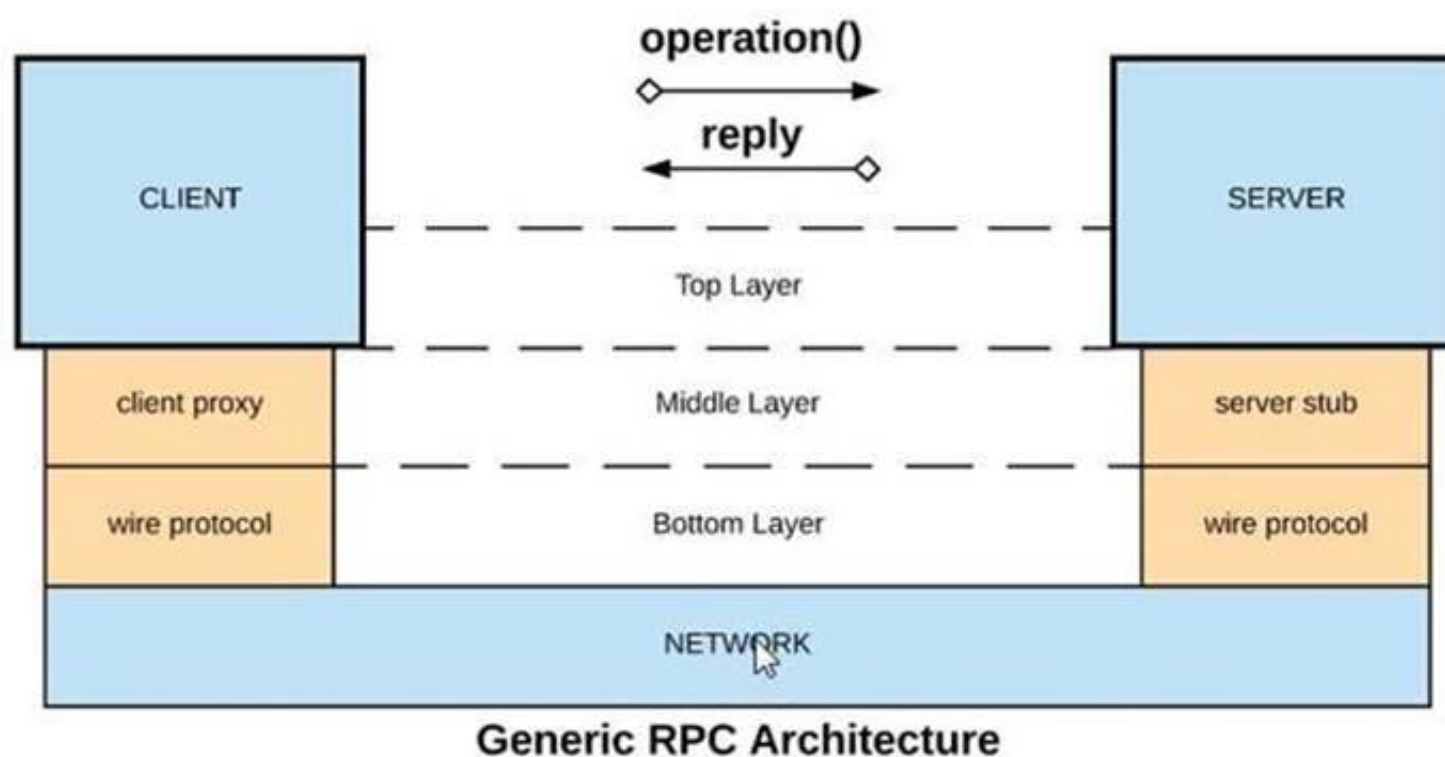
***** Key details to note from the given scenario:

>> Power relationship between Order API and Product API is customer/supplier

So, as per below rules of "Power Relationships", the caller (in this case Order API) would request for features to the called (Product API team) and the Product API team would need to accomodate those requests.

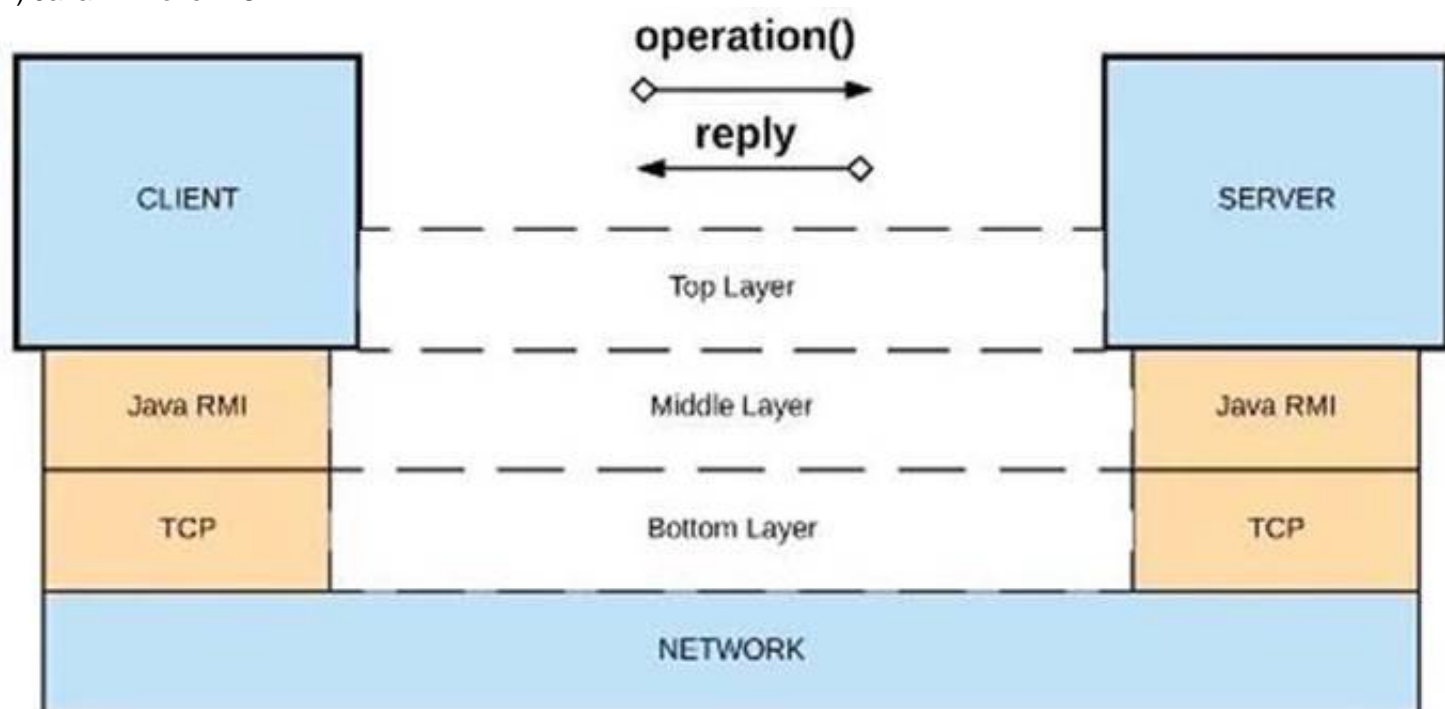
NEW QUESTION 22

Refer to the exhibit.

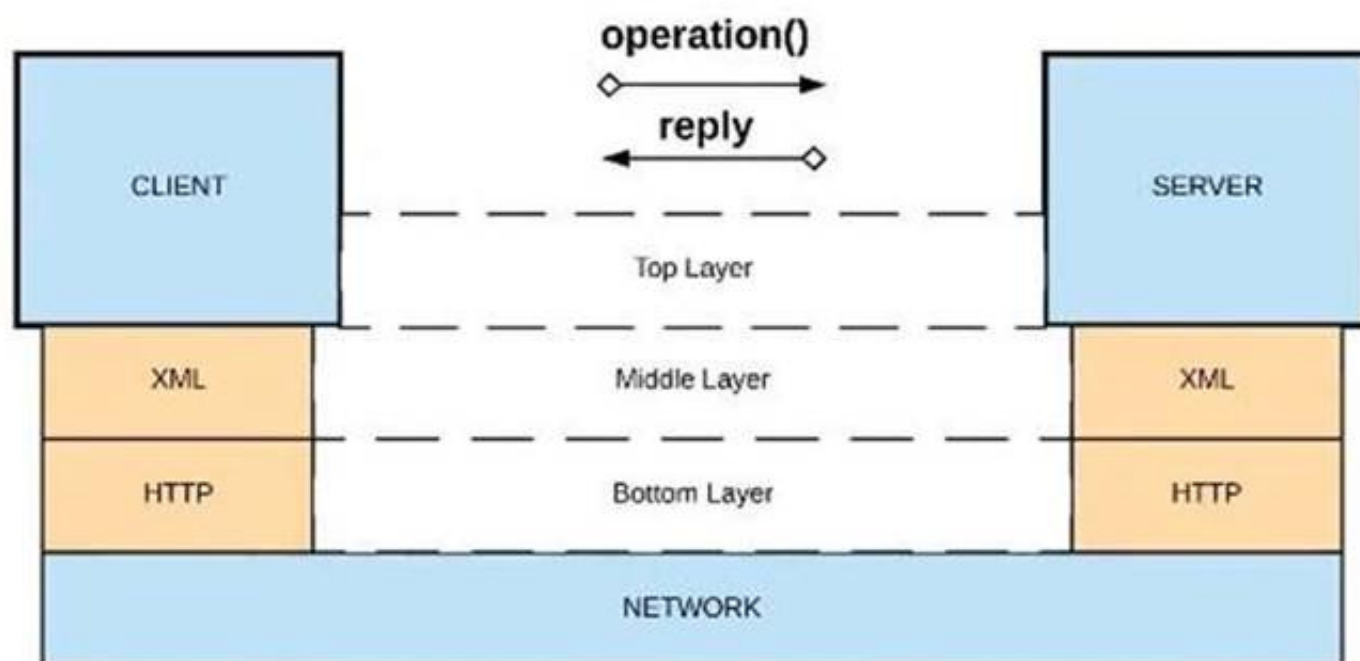


What is a valid API in the sense of API-led connectivity and application networks?

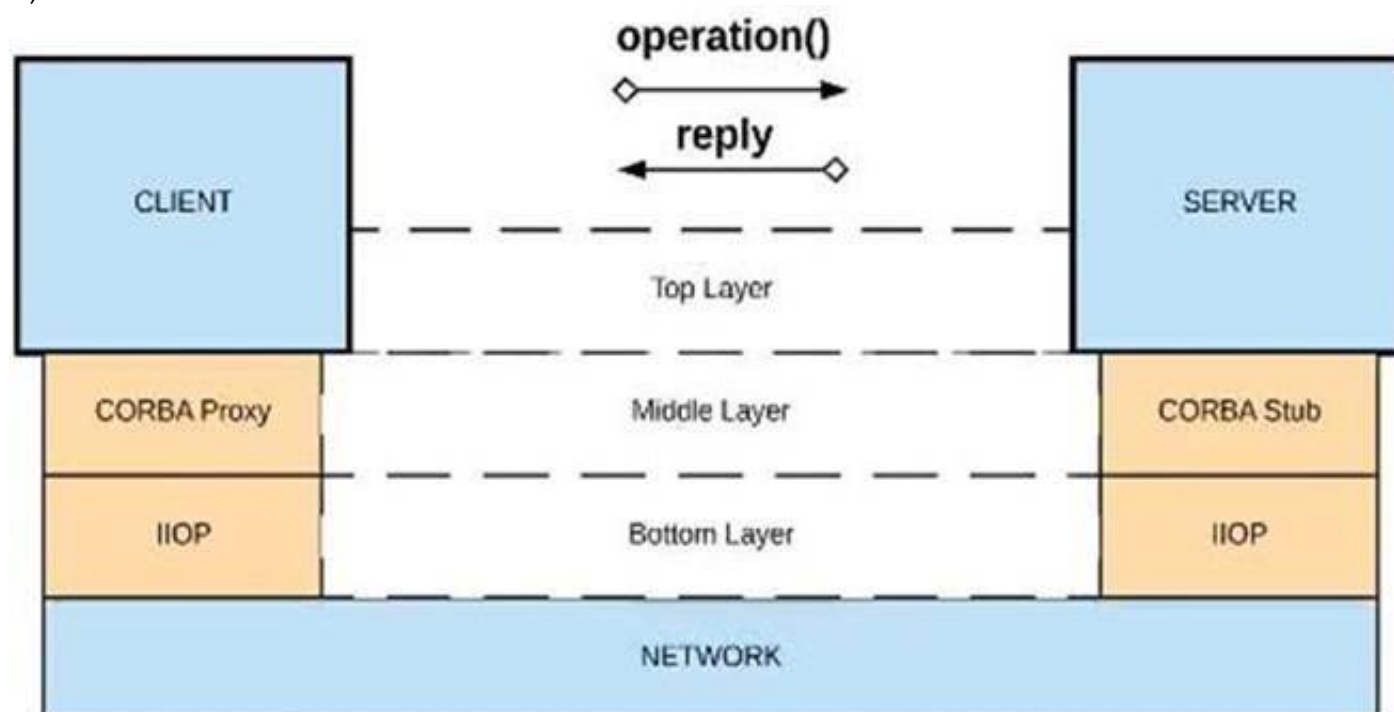
- A) Java RMI over TCP



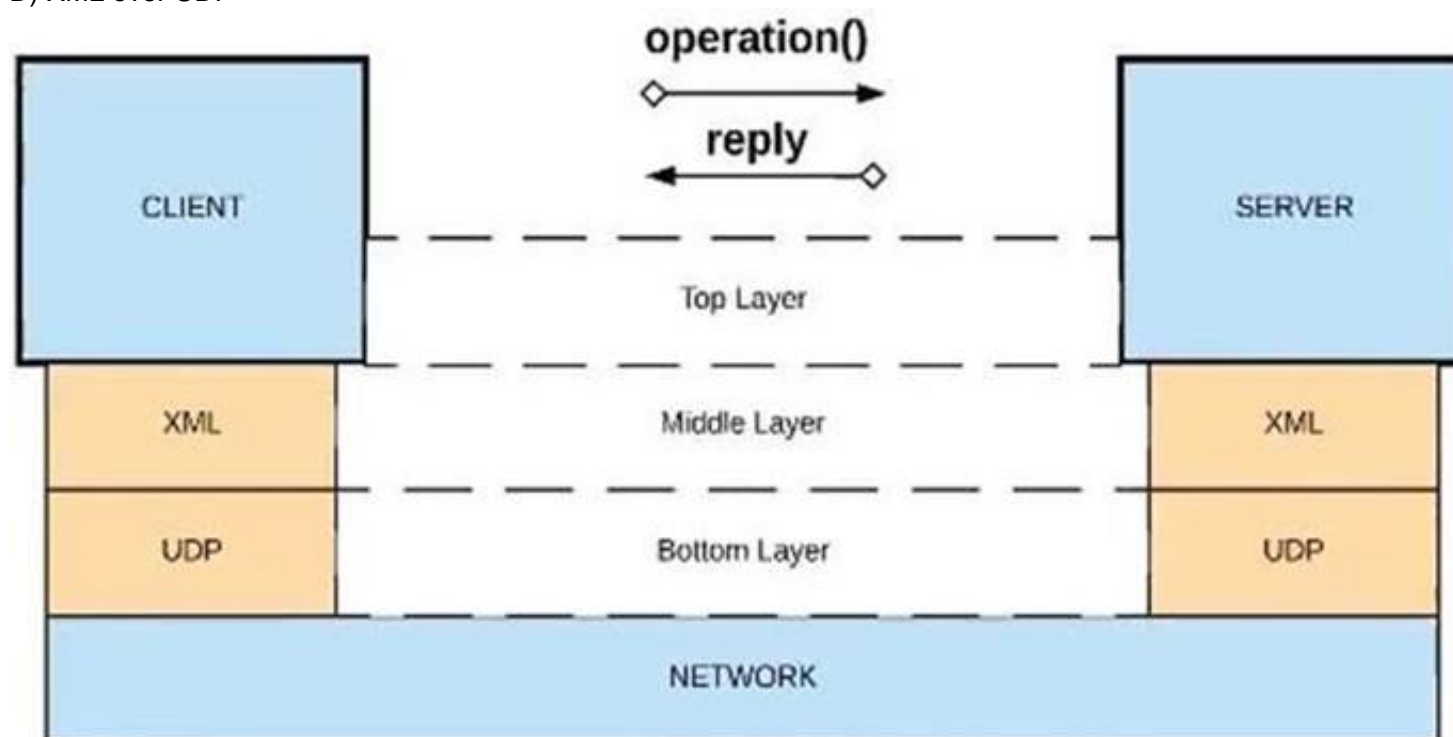
- B) Java RMI over TCP



C) CORBA over IIOP



D) XML over UDP



- A. Option A
- B. Option B
- C. Option C
- D. Option D

Answer: D

Explanation:

\Correct Answer
XML over HTTP

>> API-led connectivity and Application Networks urge to have the APIs on HTTP based protocols for building most effective APIs and networks on top of them.
>> The HTTP based APIs allow the platform to apply various varieties of policies to address many NFRs
>> The HTTP based APIs also allow to implement many standard and effective implementation patterns that adhere to HTTP based w3c rules.
Bottom of Form Top of Form

NEW QUESTION 24

An organization wants MuleSoft-hosted runtime plane features (such as HTTP load balancing, zero downtime, and horizontal and vertical scaling) in its Azure environment. What runtime plane minimizes the organization's effort to achieve these features?

- A. Anypoint Runtime Fabric
- B. Anypoint Platform for Pivotal Cloud Foundry
- C. CloudHub
- D. A hybrid combination of customer-hosted and MuleSoft-hosted Mule runtimes

Answer: A

Explanation:

Correct Answer

Anypoint Runtime Fabric

>> When a customer is already having an Azure environment, It is not at all an ideal approach to go with hybrid model having some Mule Runtimes hosted on Azure and some on MuleSoft. This is unnecessary and useless.

>> CloudHub is a Mulesoft-hosted Runtime plane and is on AWS. We cannot customize to point CloudHub to customer's Azure environment.

>> Anypoint Platform for Pivotal Cloud Foundry is specifically for infrastructure provided by Pivotal Cloud Foundry

>> Anypoint Runtime Fabric is right answer as it is a container service that automates the deployment and orchestration of Mule applications and API gateways. Runtime Fabric runs within a customer-managed infrastructure on AWS, Azure, virtual machines (VMs), and bare-metal servers.

-Some of the capabilities of Anypoint Runtime Fabric include:

-Isolation between applications by running a separate Mule runtime per application.

-Ability to run multiple versions of Mule runtime on the same set of resources.

-Scaling applications across multiple replicas.

-Automated application fail-over.

-Application management with Anypoint Runtime Manager.

NEW QUESTION 27

A new upstream API is being designed to offer an SLA of 500 ms median and 800 ms maximum (99th percentile) response time. The corresponding API implementation needs to sequentially invoke 3 downstream APIs of very similar complexity.

The first of these downstream APIs offers the following SLA for its response time: median: 100 ms, 80th percentile: 500 ms, 95th percentile: 1000 ms.

If possible, how can a timeout be set in the upstream API for the invocation of the first downstream API to meet the new upstream API's desired SLA?

- A. Set a timeout of 50 ms; this times out more invocations of that API but gives additional room for retries
- B. Set a timeout of 100 ms; that leaves 400 ms for the other two downstream APIs to complete
- C. No timeout is possible to meet the upstream API's desired SLA; a different SLA must be negotiated with the first downstream API or invoke an alternative API
- D. Do not set a timeout; the invocation of this API is mandatory and so we must wait until it responds

Answer: B

Explanation:

Correct Answer

Set a timeout of 100ms; that leaves 400ms for other two downstream APIs to complete

***** Key details to take from the given scenario:

>> Upstream API's designed SLA is 500ms (median). Lets ignore maximum SLA response times.

>> This API calls 3 downstream APIs sequentially and all these are of similar complexity.

>> The first downstream API is offering median SLA of 100ms, 80th percentile: 500ms; 95th percentile: 1000ms.

Based on the above details:

>> We can rule out the option which is suggesting to set 50ms timeout. Because, if the median SLA itself being offered is 100ms then most of the calls are going to timeout and time gets wasted in retried them and eventually gets exhausted with all retries. Even if some retries gets successful, the remaining time won't leave enough room for 2nd and 3rd downstream APIs to respond within time.

>> The option suggesting to NOT set a timeout as the invocation of this API is mandatory and so we must wait until it responds is silly. As not setting time out would go against the good implementation pattern and moreover if the first API is not responding within its offered median SLA 100ms then most probably it would either respond in 500ms (80th percentile) or 1000ms (95th percentile). In BOTH cases, getting a successful response from 1st downstream API does NO GOOD because already by this time the Upstream API SLA of 500 ms is breached. There is no time left to call 2nd and 3rd downstream APIs.

>> It is NOT true that no timeout is possible to meet the upstream APIs desired SLA.

As 1st downstream API is offering its median SLA of 100ms, it means MOST of the time we would get the responses within that time. So, setting a timeout of 100ms would be ideal for MOST calls as it leaves enough room of 400ms for remaining 2 downstream API calls.

NEW QUESTION 29

A REST API is being designed to implement a Mule application.

What standard interface definition language can be used to define REST APIs?

- A. Web Service Definition Language(WSDL)
- B. OpenAPI Specification (OAS)
- C. YAML
- D. AsyncAPI Specification

Answer: B

NEW QUESTION 33

What is true about API implementations when dealing with legal regulations that require all data processing to be performed within a certain jurisdiction (such as in the USA or the EU)?

- A. They must avoid using the Object Store as it depends on services deployed ONLY to the US East region
- B. They must use a Jurisdiction-local external messaging system such as Active MQ rather than Anypoint MQ

- C. They must be deployed to Anypoint Platform runtime planes that are managed by Anypoint Platform control planes, with both planes in the same Jurisdiction
- D. They must ensure ALL data is encrypted both in transit and at rest

Answer: C

Explanation:

Correct Answer

They must be deployed to Anypoint Platform runtime planes that are managed by Anypoint Platform control planes, with both planes in the same Jurisdiction.

>> As per legal regulations, all data processing to be performed within a certain jurisdiction. Meaning, the data in USA should reside within USA and should not go out. Same way, the data in EU should reside within EU and should not go out.

>> So, just encrypting the data in transit and at rest does not help to be compliant with the rules. We need to make sure that data does not go out too.

>> The data that we are talking here is not just about the messages that are published to Anypoint MQ. It

includes the apps running, transaction states, application logs, events, metric info and any other metadata. So, just replacing Anypoint MQ with a locally hosted ActiveMQ does NOT help.

>> The data that we are talking here is not just about the key/value pairs that are stored in Object Store. It includes the messages published, apps running, transaction states, application logs, events, metric info and any other metadata. So, just avoiding using Object Store does NOT help.

>> The only option left and also the right option in the given choices is to deploy application on runtime and control planes that are both within the jurisdiction.

NEW QUESTION 34

A System API is designed to retrieve data from a backend system that has scalability challenges. What API policy can best safeguard the backend system?

- A. IPwhitelist
- B. SLA-based rate limiting
- C. Auth 2 token enforcement
- D. Client ID enforcement

Answer: B

Explanation:

Correct Answer

SLA-based rate limiting

>> Client Id enforcement policy is a "Compliance" related NFR and does not help in maintaining the "Quality of Service (QoS)". It CANNOT and NOT meant for protecting the backend systems from scalability challenges.

>> IP Whitelisting and OAuth 2.0 token enforcement are "Security" related NFRs and again does not help in maintaining the "Quality of Service (QoS)". They CANNOT and are NOT meant for protecting the backend systems from scalability challenges.

Rate Limiting, Rate Limiting-SLA, Throttling, Spike Control are the policies that are "Quality of Service (QoS)" related NFRs and are meant to help in protecting the backend systems from getting overloaded.

<https://dzone.com/articles/how-to-secure-apis>

NEW QUESTION 36

An Anypoint Platform organization has been configured with an external identity provider (IdP) for identity

management and client management. What credentials or token must be provided to Anypoint CLI to execute commands against the Anypoint Platform APIs?

- A. The credentials provided by the IdP for identity management
- B. The credentials provided by the IdP for client management
- C. An OAuth 2.0 token generated using the credentials provided by the IdP for client management
- D. An OAuth 2.0 token generated using the credentials provided by the IdP for identity management

Answer: A

Explanation:

Correct Answer

The credentials provided by the IdP for identity management

NEW QUESTION 41

An organization has several APIs that accept JSON data over HTTP POST. The APIs are all publicly available and are associated with several mobile applications and web applications.

The organization does NOT want to use any authentication or compliance policies for these APIs, but at the same time, is worried that some bad actor could send payloads that could somehow compromise the applications or servers running the API implementations.

What out-of-the-box Anypoint Platform policy can address exposure to this threat?

- A. Shut out bad actors by using HTTPS mutual authentication for all API invocations
- B. Apply an IP blacklist policy to all APIs; the blacklist will include all bad actors
- C. Apply a Header injection and removal policy that detects the malicious data before it is used
- D. Apply a JSON threat protection policy to all APIs to detect potential threat vectors

Answer: D

Explanation:

Correct Answer

Apply a JSON threat protection policy to all APIs to detect potential threat vectors

>> Usually, if the APIs are designed and developed for specific consumers (known consumers/customers) then we would IP Whitelist the same to ensure that traffic only comes from them.

>> However, as this scenario states that the APIs are publicly available and being used by so many mobile and web applications, it is NOT possible to identify and blacklist all possible bad actors.
>> So, JSON threat protection policy is the best chance to prevent any bad JSON payloads from such bad actors.

NEW QUESTION 45

What Anypoint Connectors support transactions?

- A. Database, JMS, VM
- B. Database, 3MS, HTTP
- C. Database, JMS, VM, SFTP
- D. Database, VM, File

Answer: A

NEW QUESTION 46

A company has started to create an application network and is now planning to implement a Center for Enablement (C4E) organizational model. What key factor would lead the company to decide upon a federated rather than a centralized C4E?

- A. When there are a large number of existing common assets shared by development teams
- B. When various teams responsible for creating APIs are new to integration and hence need extensive training
- C. When development is already organized into several independent initiatives or groups
- D. When the majority of the applications in the application network are cloud based

Answer: C

Explanation:

Correct Answer

When development is already organized into several independent initiatives or groups

>> It would require lot of process effort in an organization to have a single C4E team coordinating with multiple already organized development teams which are into several independent initiatives. A single C4E works well with different teams having at least a common initiative. So, in this scenario, federated C4E works well instead of centralized C4E.

NEW QUESTION 47

An API has been updated in Anypoint exchange by its API producer from version 3.1.1 to 3.2.0 following accepted semantic versioning practices and the changes have been communicated via the APIs public portal. The API endpoint does NOT change in the new version. How should the developer of an API client respond to this change?

- A. The API producer should be requested to run the old version in parallel with the new one
- B. The API producer should be contacted to understand the change to existing functionality
- C. The API client code only needs to be changed if it needs to take advantage of the new features
- D. The API clients need to update the code on their side and need to do full regression

Answer: C

NEW QUESTION 49

A company wants to move its Mule API implementations into production as quickly as possible. To protect access to all Mule application data and metadata, the company requires that all Mule applications be deployed to the company's customer-hosted infrastructure within the corporate firewall. What combination of runtime plane and control plane options meets these project lifecycle goals?

- A. Manually provisioned customer-hosted runtime plane and customer-hosted control plane
- B. MuleSoft-hosted runtime plane and customer-hosted control plane
- C. Manually provisioned customer-hosted runtime plane and MuleSoft-hosted control plane
- D. iPaaS provisioned customer-hosted runtime plane and MuleSoft-hosted control plane

Answer: A

Explanation:

Correct Answer

Manually provisioned customer-hosted runtime plane and customer-hosted control plane

There are two key factors that are to be taken into consideration from the scenario given in the question.

>> Company requires both data and metadata to be resided within the corporate firewall

>> Company would like to go with customer-hosted infrastructure.

Any deployment model that is to deal with the cloud directly or indirectly (Mulesoft-hosted or Customer's own cloud like Azure, AWS) will have to share atleast the metadata.

Application data can be controlled inside firewall by having Mule Runtimes on customer hosted runtime plane. But if we go with Mulsoft-hosted/ Cloud-based control plane, the control plane required atleast some minimum level of metadata to be sent outside the corporate firewall.

As the customer requirement is pretty clear about the data and metadata both to be within the corporate firewall, even though customer wants to move to production as quickly as possible, unfortunately due to the nature of their security requirements, they have no other option but to go with manually provisioned customer-hosted runtime plane and customer-hosted control plane.

NEW QUESTION 50

An organization makes a strategic decision to move towards an IT operating model that emphasizes consumption of reusable IT assets using modern APIs (as defined by MuleSoft).

What best describes each modern API in relation to this new IT operating model?

- A. Each modern API has its own software development lifecycle, which reduces the need for documentation and automation

- B. Each modern API must be treated like a product and designed for a particular target audience (for instance, mobile app developers)
- C. Each modern API must be easy to consume, so should avoid complex authentication mechanisms such as SAML or JWT D
- D. Each modern API must be REST and HTTP based

Answer: B

Explanation:

Correct Answers

* 1. Each modern API must be treated like a product and designed for a particular target audience (for instance mobile app developers)

Bottom of Form Top of Form

NEW QUESTION 52

A company requires Mule applications deployed to CloudHub to be isolated between non-production and production environments. This is so Mule applications deployed to non-production environments can only access backend systems running in their customer-hosted non-production environment, and so Mule applications deployed to production environments can only access backend systems running in their customer-hosted production environment. How does MuleSoft recommend modifying Mule applications, configuring environments, or changing infrastructure to support this type of per-environment isolation between Mule applications and backend systems?

- A. Modify properties of Mule applications deployed to the production Anypoint Platform environments to prevent access from non-production Mule applications
- B. Configure firewall rules in the infrastructure inside each customer-hosted environment so that only IP addresses from the corresponding Anypoint Platform environments are allowed to communicate with corresponding backend systems
- C. Create non-production and production environments in different Anypoint Platform business groups
- D. Create separate Anypoint VPCs for non-production and production environments, then configure connections to the backend systems in the corresponding customer-hosted environments

Answer: D

Explanation:

Correct Answer

Create separate Anypoint VPCs for non-production and production environments, then configure connections to the backend systems in the corresponding customer-hosted environments.

>> Creating different Business Groups does NOT make any difference w.r.t accessing the non-prod and prod customer-hosted environments. Still they will be accessing from both Business Groups unless process network restrictions are put in place.

>> We need to modify or couple the Mule Application Implementations with the environment. In fact, we should never implements application coupled with environments by binding them in the properties. Only basic things like endpoint URL etc should be bundled in properties but not environment level access restrictions.

>> IP addresses on CloudHub are dynamic until unless a special static addresses are assigned. So it is not possible to setup firewall rules in customer-hosted infrastrcture. More over, even if static IP addresses are assigned, there could be 100s of applications running on cloudhub and setting up rules for all of them would be a hectic task, non-maintainable and definitely got a good practice.

>> Thbeest practice recommended

by MulesoftIn(fact any cloud provider), is to have your Anypoint VPCs

seperated for Prod and Non-Prod and perform the VPC peering or VPN tunneling for these Anypoint VPCs to respective Prod and Non-Prod customer-hosted environment networks.

NEW QUESTION 56

The implementation of a Process API must change.

What is a valid approach that minimizes the impact of this change on API clients?

- A. Update the RAML definition of the current Process API and notify API client developers by sending them links to the updated RAML definition
- B. Postpone changes until API consumers acknowledge they are ready to migrate to a new Process API or API version
- C. Implement required changes to the Process API implementation so that whenever possible, the Process API's RAML definition remains unchanged
- D. Implement the Process API changes in a new API implementation, and have the old API implementation return an HTTP status code 301 - Moved Permanently to inform API clients they should be calling the new API implementation

Answer: C

Explanation:

Correct Answer

Implement required changes to the Process API implementation so that, whenever possible, the Process API's RAML definition remains unchanged.

***** Key requirement in the question is:

>> Approach that minimizes the impact of this change on API clients Based on above:

>> Updating the RAML definition would possibly impact the API clients if the changes require any thing mandatory from client side. So, one should try to avoid doing that until really necessary.

>> Implementing the changes as a completely different API and then redirectly the clients with 3xx status code is really upsetting design and heavily impacts the API clients.

>> Organisations and IT cannot simply postpone the changes required until all API consumers acknowledge they are ready to migrate to a new Process API or API version. This is unrealistic and not possible.

The best way to handle the changes always is to implement required changes to the API implementations so that, whenever possible, the API's RAML definition remains unchanged.

NEW QUESTION 57

A system API has a guaranteed SLA of 100 ms per request. The system API is deployed to a primary environment as well as to a disaster recovery (DR) environment, with different DNS names in each environment. An upstream process API invokes the system API and the main goal of this process API is to respond to client requests in the least possible time. In what order should the system APIs be invoked, and what changes should be made in order to speed up the response time for requests from the process API?

- A. In parallel, invoke the system API deployed to the primary environment and the system API deployed to the DR environment, and ONLY use the first response

- B. In parallel, invoke the system API deployed to the primary environment and the system API deployed to the DR environment using a scatter-gather configured with a timeout, and then merge the responses
- C. Invoke the system API deployed to the primary environment, and if it fails, invoke the system API deployed to the DR environment
- D. Invoke ONLY the system API deployed to the primary environment, and add timeout and retry logic to avoid intermittent failures

Answer: A

Explanation:

Correct Answer

In parallel, invoke the system API deployed to the primary environment and the system API deployed to the DR environment, and ONLY use the first response.

>> The API requirement in the given scenario is to respond in least possible time.

>> The option that is suggesting to first try the API in primary environment and then fallback to API in DR environment would result in successful response but NOT in least possible time. So, this is NOT a right choice of implementation for given requirement.

>> Another option that is suggesting to ONLY invoke API in primary environment and to add timeout and retries may also result in successful response upon retries but NOT in least possible time. So, this is also NOT a right choice of implementation for given requirement.

>> One more option that is suggesting to invoke API in primary environment and API in DR environment in parallel using Scatter-Gather would result in wrong API response as it would return merged results and moreover, Scatter-Gather does things in parallel which is true but still completes its scope only on finishing all routes inside it. So again, NOT a right choice of implementation for given requirement

The Correct choice is to invoke the API in primary environment and the API in DR environment parallelly, and using ONLY the first response received from one of them.

NEW QUESTION 58

An organization has created an API-led architecture that uses various API layers to integrate mobile clients with a backend system. The backend system consists of a number of specialized components and can be accessed via a REST API. The process and experience APIs share the same bounded-context model that is different from the backend data model. What additional canonical models, bounded-context models, or anti-corruption layers are best added to this architecture to help process data consumed from the backend system?

- A. Create a bounded-context model for every layer and overlap them when the boundary contexts overlap, letting API developers know about the differences between upstream and downstream data models
- B. Create a canonical model that combines the backend and API-led models to simplify and unify data models, and minimize data transformations.
- C. Create a bounded-context model for the system layer to closely match the backend data model, and add an anti-corruption layer to let the different bounded contexts cooperate across the system and process layers
- D. Create an anti-corruption layer for every API to perform transformation for every data model to match each other, and let data simply travel between APIs to avoid the complexity and overhead of building canonical models

Answer: C

Explanation:

Correct Answer

Create a bounded-context model for the system layer to closely match the backend data model, and add an anti-corruption layer to let the different bounded contexts cooperate across the system and process layers

>> Canonical models are not an option here as the organization has already put in efforts and created bounded-context models for Experience and Process APIs.

>> Anti-corruption layers for ALL APIs is unnecessary and invalid because it is mentioned that experience and process APIs share same bounded-context model. It is just the System layer APIs that need to choose their approach now.

>> So, having an anti-corruption layer just between the process and system layers will work well. Also to speed up the approach, system APIs can mimic the backend system data model.

NEW QUESTION 62

.....

THANKS FOR TRYING THE DEMO OF OUR PRODUCT

Visit Our Site to Purchase the Full Set of Actual MCPA-Level-1 Exam Questions With Answers.

We Also Provide Practice Exam Software That Simulates Real Exam Environment And Has Many Self-Assessment Features. Order the MCPA-Level-1 Product From:

<https://www.2passeasy.com/dumps/MCPA-Level-1/>

Money Back Guarantee

MCPA-Level-1 Practice Exam Features:

- * MCPA-Level-1 Questions and Answers Updated Frequently
- * MCPA-Level-1 Practice Questions Verified by Expert Senior Certified Staff
- * MCPA-Level-1 Most Realistic Questions that Guarantee you a Pass on Your FirstTry
- * MCPA-Level-1 Practice Test Questions in Multiple Choice Formats and Updatesfor 1 Year