

CompTIA

Exam Questions CV0-003

CompTIA Cloud+ Certification Exam



NEW QUESTION 1

An organization's web server farm, which is hosted in the cloud with DNS load balancing, is experiencing a spike in network traffic. This has caused an outage of the organization's web server infrastructure.

Which of the following should be implemented to prevent this in the future as a mitigation method?

- A. Enable DLP
- B. Configure microsegmentation
- C. Enable DNSSEC
- D. Deploy a vADC appliance

Answer: D

NEW QUESTION 2

In an existing IaaS instance, it is required to deploy a single application that has different versions. Which of the following should be recommended to meet this requirement?

- A. Deploy using containers
- B. Install a Type 2 hypervisor
- C. Enable SR-IOV on the host
- D. Create snapshots

Answer: A

NEW QUESTION 3

A support engineer wants to prevent users from running malware on several IaaS compute instances. Which of the following will BEST achieve this objective?

- A. Encrypt all applications that users should not access.
- B. Set the execute filesystem permissions on the desired applications only.
- C. Implement an application whitelisting policy.
- D. Disable file sharing on the instance.

Answer: C

NEW QUESTION 4

A company recently experienced a power outage that lasted 30 minutes. During this time, a whole rack of servers was inaccessible, even though the servers did not lose power.

Which of the following should be investigated FIRST?

- A. Server power
- B. Rack power
- C. Switch power
- D. SAN power

Answer: C

NEW QUESTION 5

Some VMs that are hosted on a dedicated host server have each been allocated with 32GB of memory. Some of VMs are not utilizing more than 30% of the allocation. Which of the following should be enabled to optimize the memory utilization?

- A. Auto-scaling of compute
- B. Oversubscription
- C. Dynamic memory allocations on guests
- D. Affinity rules in the hypervisor

Answer: C

NEW QUESTION 6

A systems administrator is troubleshooting performance issues with a Windows VDI environment. Users have reported that VDI performance has been slow since the images were upgraded from Windows 7 to Windows 10.

This VDI environment is used to run simple tasks, such as Microsoft Office. The administrator investigates the virtual machines and finds the following settings:

- 4 vCPU
- 16GB RAM
- 10Gb networking
- 256MB frame buffer

Which of the following MOST likely needs to be upgraded?

- A. vRAM
- B. vCPU
- C. vGPU
- D. vNIC

Answer: D

NEW QUESTION 7

A Chief Information Security Officer (CISO) is evaluating the company's security management program. The CISO needs to locate all the assets with identified deviations and mitigation measures. Which of the following would help the CISO with these requirements?

- A. An SLA document
- B. ADR plan
- C. SOC procedures
- D. A risk register

Answer: C

NEW QUESTION 8

An organization is developing a new solution for hosting an external website. The systems administrator needs the ability to manage the OS. Which of the following methods would be MOST suitable to achieve this objective?

- A. Deploy web servers into an IaaS provider.
- B. Implement a cloud-based VDI solution.
- C. Provision web servers in a container environment.
- D. Use PaaS components in the cloud to implement the product.

Answer: C

NEW QUESTION 9

A DevOps administrator is automating an existing software development workflow. The administrator wants to ensure that prior to any new code going into production, tests confirm the new code does not negatively impact existing automation activities.

Which of the following testing techniques would be BEST to use?

- A. Usability testing
- B. Regression testing
- C. Vulnerability testing
- D. Penetration testing

Answer: B

NEW QUESTION 10

A systems administrator needs to configure an email client to ensure data integrity of the email messages. Which of the following provides the BEST mechanism to achieve this goal?

- A. Cyclic redundancy check
- B. SHA-1 hashes
- C. SHA-256 hashes
- D. Digital signature

Answer: A

NEW QUESTION 10

Due to a policy change, a few of a customer's application VMs have been migrated to synchronously replicated storage. The customer now reports that performance is lower. The systems administrator checks the resource usage and discovers CPU utilization is at 60% and available memory is at 30%. Which of the following is the MOST likely cause?

- A. There is not enough vCPU assigned
- B. The application is not compatible with the new settings
- C. The new configuration is adding latency
- D. The memory of the VM is underallocated

Answer: B

NEW QUESTION 11

A systems administrator would like to reduce the network delay between two servers.

Which of the following will reduce the network delay without taxing other system resources?

- A. Decrease the MTU size on both servers
- B. Adjust the CPU resources on both servers
- C. Enable compression between the servers
- D. Configure a VPN tunnel between the servers

Answer: A

NEW QUESTION 15

To save on licensing costs, the on-premises, IaaS-hosted databases need to be migrated to a public DBaaS solution. Which of the following would be the BEST technique?

- A. Live migration
- B. Physical-to-virtual
- C. Storage-level mirroring
- D. Database replication

Answer: B

NEW QUESTION 20

Lateral-moving malware has infected the server infrastructure.

Which of the following network changes would MOST effectively prevent lateral movement in the future?

- A. Implement DNSSEC in all DNS servers
- B. Segment the physical network using a VLAN
- C. Implement microsegmentation on the network
- D. Implement 802.1X in the network infrastructure

Answer: B

NEW QUESTION 24

A database analyst reports it takes two hours to perform a scheduled job after onboarding 10,000 new users to the system. The analyst made no changes to the scheduled job before or after onboarding the users. The database is hosted in an IaaS instance on a cloud provider. Which of the following should the cloud administrator evaluate to troubleshoot the performance of the job?

- A. The IaaS compute configurations, the capacity trend analysis reports, and the storage IOPS
- B. The hypervisor logs, the memory utilization of the hypervisor host, and the network throughput of the hypervisor
- C. The scheduled job logs for successes and failures, the time taken to execute the job, and the job schedule
- D. Migrating from IaaS to on premises, the network traffic between on-premises users and the IaaS instance, and the CPU utilization of the hypervisor host

Answer: C

NEW QUESTION 29

A technician just received the lessons learned from some recent data that was lost due to an on-premises file-server crash. The action point is to change the backup strategy to minimize manual intervention. Which of the following is the BEST approach for the technician to implement?

- A. Backup as a service
- B. RAID 1
- C. Long-term storage
- D. New backup devices

Answer: C

NEW QUESTION 32

A vendor is installing a new retail store management application for a customer. The application license ensures software costs are low when the application is not being used, but costs go up when use is higher.

Which of the following licensing models is MOST likely being used?

- A. Socket-based
- B. Core-based
- C. Subscription
- D. Volume-based

Answer: D

NEW QUESTION 33

A company that utilizes an IaaS service provider has contracted with a vendor to perform a penetration test on its environment. The vendor is able to exploit the virtualization layer and obtain access to other instances within the cloud provider's environment that do not belong to the company.

Which of the following BEST describes this attack?

- A. VM escape
- B. Directory traversal
- C. Buffer overflow
- D. Heap spraying

Answer: A

NEW QUESTION 36

A cloud administrator checked out the deployment scripts used to deploy the sandbox environment to a public cloud provider. The administrator modified the script to add an application load balancer in front of the web-based front-end application. The administrator next used the script to recreate a new sandbox environment successfully, and the application was then using the new load balancer.

The following week, a new update was required to add more front-end servers to the sandbox environment. A second administrator made the necessary changes and checked out the deployment scripts. The second administrator then ran the script, but the application load balancer was missing from the new deployment.

Which of the following is the MOST likely reason for this issue?

- A. The license limit on the number of server deployments allowed per month was exceeded
- B. The deployment script changes made by the first administrator were not checked in and committed
- C. The new server images were incompatible with the application load-balancer configuration
- D. The application load balancer exceeded the maximum number of servers it could use

Answer: B

NEW QUESTION 38

A technician is working with an American company that is using cloud services to provide video-based training for its customers. Recently, due to a surge in demand, customers in Europe are experiencing latency.

Which of the following services should the technician deploy to eliminate the latency issue?

- A. Auto-scaling
- B. Cloud bursting
- C. A content delivery network
- D. A new cloud provider

Answer: A

NEW QUESTION 43

An organization has multiple VLANs configured to segregate the network traffic. Following is the breakdown of the network segmentation:

- Production traffic (10.10.0.0/24)
- Network backup (10.20.0.0/25)
- Virtual IP network (10.20.0.128/25)

The following configuration exists on the server:

Server name	Interface	IP address	Gateway
COMPSRV01	Production	10.10.0.12/24	10.10.0.1
COMPSRV01	Network backup	10.20.0.12/25	10.10.0.1

The backup administrator observes that the weekly backup is failing for this server. Which of the following commands should the administrator run to identify the issue?

- A. ROUTE PRINT
- B. NETSTAT -A
- C. IPCONFIG /ALL
- D. NET SM

Answer: A

NEW QUESTION 47

A systems administrator is creating a VM and wants to ensure disk space is not allocated to the VM until it is needed. Which of the following techniques should the administrator use to ensure?

- A. Deduplication
- B. Thin provisioning
- C. Software-defined storage
- D. iSCSI storage

Answer: B

NEW QUESTION 52

A company has deployed a new cloud solution and is required to meet security compliance.

Which of the following will MOST likely be executed in the cloud solution to meet security requirements?

- A. Performance testing
- B. Regression testing
- C. Vulnerability testing
- D. Usability testing

Answer: C

NEW QUESTION 56

An organization is hosting a DNS domain with private and public IP ranges. Which of the following should be implemented to achieve ease of management?

- A. Network peering
- B. A CDN solution
- C. A SDN solution
- D. An IPAM solution

Answer: D

NEW QUESTION 59

A systems administrator is reviewing two CPU models for a cloud deployment. Both CPUs have the same number of cores/threads and run at the same clock speed.

Which of the following will BEST identify the CPU with more computational power?

- A. Simultaneous multithreading
- B. Bus speed
- C. L3 cache
- D. Instructions per cycle

Answer: D

NEW QUESTION 60

A cloud architect wants to minimize the risk of having systems administrators in an IaaS compute instance perform application code changes. The development group should be the only group allowed to modify files in the directory. Which of the following will accomplish the desired objective?

- A. Remove the file write permissions for the application service account.
- B. Restrict the file write permissions to the development group only.
- C. Add access to the fileshare for the systems administrator's group.
- D. Deny access to all development user accounts

Answer: B

NEW QUESTION 65

Which of the following cloud services is fully managed?

- A. IaaS
- B. GPU in the cloud
- C. IoT
- D. Serverless compute
- E. SaaS

Answer: C

NEW QUESTION 69

An organization is required to set a custom registry key on the guest operating system. Which of the following should the organization implement to facilitate this requirement?

- A. A configuration management solution
- B. A log and event monitoring solution
- C. A file integrity check solution
- D. An operating system ACL

Answer: A

NEW QUESTION 72

A cloud administrator is reviewing the authentication and authorization mechanism implemented within the cloud environment. Upon review, the administrator discovers the sales group is part of the finance group, and the sales team members can access the financial application. Single sign-on is also implemented, which makes access much easier.

Which of the following access control rules should be changed?

- A. Discretionary-based
- B. Attribute-based
- C. Mandatory-based
- D. Role-based

Answer: D

NEW QUESTION 76

A systems administrator in a large enterprise needs to alter the configuration of one of the finance department's database servers.

Which of the following should the administrator perform FIRST?

- A. Capacity planning
- B. Change management
- C. Backups
- D. Patching

Answer: C

NEW QUESTION 77

A systems administrator wants to have near-real-time information on the volume of data being exchanged between an application server and its clients on the Internet.

Which of the following should the systems administrator implement to achieve this objective?

- A. A stateful firewall
- B. DLP
- C. DNSSEC
- D. Network flows

Answer: D

NEW QUESTION 78

A systems administrator is analyzing a report of slow performance in a cloud application. This application is working behind a network load balancer with two VMs, and each VM has its own digital certificate configured. Currently, each VM is consuming 85% CPU on average. Due to cost restrictions, the administrator cannot scale vertically or horizontally in the environment. Which of the following actions should the administrator take to decrease the CPU utilization? (Choose two.)

- A. Configure the communication between the load balancer and the VMs to use a VPN.
- B. Move the digital certificate to the load balancer.

- C. Configure the communication between the load balancer and the VMs to use HTTP.
- D. Reissue digital certificates on the VMs.
- E. Configure the communication between the load balancer and the VMs to use HTTPS.
- F. Keep the digital certificates on the VMs.

Answer: BE

NEW QUESTION 81

A systems administrator disabled TLS 1.0 and 1.1, as well as RC4, 3DES, and AES-128 ciphers for TLS 1.2, on a web server. A client now reports being unable to access the web server, but the administrator verifies that the server is online, the web service is running, and other users can reach the server as well. Which of the following should the administrator recommend the user do FIRST?

- A. Disable antivirus/anti-malware software
- B. Turn off the software firewall
- C. Establish a VPN tunnel between the computer and the web server
- D. Update the web browser to the latest version

Answer: D

NEW QUESTION 83

An IaaS provider has numerous devices and services that are commissioned and decommissioned automatically on an ongoing basis. The cloud administrator needs to implement a solution that will help reduce administrative overhead. Which of the following will accomplish this task?

- A. IPAM
- B. NAC
- C. NTP
- D. DNS

Answer: A

NEW QUESTION 85

An organization purchased new servers with GPUs for render farms. The servers have limited CPU resources. Which of the following GPU configurations will be the MOST optimal for virtualizing this environment?

- A. Dedicated
- B. Shared
- C. Passthrough
- D. vGPU

Answer: D

NEW QUESTION 87

A systems administrator recently deployed a VDI solution in a cloud environment; however, users are now experiencing poor rendering performance when trying to display 3-D content on their virtual desktops, especially at peak times. Which of the following actions will MOST likely solve this issue?

- A. Update the quest graphics drivers from the official repository
- B. Add more vGPU licenses to the host
- C. Instruct users to access virtual workstations only on the VLAN
- D. Select vGPU profiles with higher video RAM

Answer: D

NEW QUESTION 88

A company has developed a cloud-ready application. Before deployment, an administrator needs to select a deployment technology that provides a high level of portability and is lightweight in terms of footprint and resource requirements. Which of the following solutions will be BEST to help the administrator achieve the requirements?

- A. Containers
- B. Infrastructure as code
- C. Desktop virtualization
- D. Virtual machines

Answer: A

NEW QUESTION 93

The security team for a large corporation is investigating a data breach. The team members are all trying to do the same tasks but are interfering with each other's work. Which of the following did the team MOST likely forget to implement?

- A. Incident type categories
- B. A calling tree
- C. Change management
- D. Roles and responsibilities

Answer: D

NEW QUESTION 97

Which of the following would be the BEST option for discussion of what individuals should do in an incident response or disaster recovery scenario?

- A. A business continuity plan
- B. Incident response/disaster recovery documentation
- C. A tabletop exercise
- D. A root cause analysis

Answer: A

NEW QUESTION 98

An organization requires the following to be achieved between the finance and marketing departments: ➤ Allow HTTPS/HTTP.

➤ Disable FTP and SMB traffic.

Which of the following is the MOST suitable method to meet the requirements?

- A. Implement an ADC solution to load balance the VLAN traffic
- B. Configure an ACL between the VLANs
- C. Implement 802.1X in these VLANs
- D. Configure on-demand routing between the VLANs

Answer: B

NEW QUESTION 103

A company has a cloud infrastructure service, and the cloud architect needs to set up a DR site. Which of the following should be configured in between the cloud environment and the DR site?

- A. Failback
- B. Playbook
- C. Zoning
- D. Replication

Answer: D

NEW QUESTION 104

An organization is running a database application on a SATA disk, and a customer is experiencing slow performance most of the time. Which of the following should be implemented to improve application performance?

- A. Increase disk capacity
- B. Increase the memory and network bandwidth
- C. Upgrade the application
- D. Upgrade the environment and use SSD drives

Answer: D

NEW QUESTION 105

A company is planning to migrate applications to a public cloud, and the Chief Information Officer (CIO) would like to know the cost per business unit for the applications in the cloud. Before the migration, which of the following should the administrator implement FIRST to assist with reporting the cost for each business unit?

- A. An SLA report
- B. Tagging
- C. Quotas
- D. Showback

Answer: D

NEW QUESTION 108

Which of the following service models would be used for a database in the cloud?

- A. PaaS
- B. IaaS
- C. CaaS
- D. SaaS

Answer: D

NEW QUESTION 109

After a hardware upgrade on a private cloud system, the systems administrator notices a considerable drop in network performance. Which of the following is MOST likely the cause?

- A. The driver
- B. The memory
- C. The cluster placement
- D. The CPU

Answer: C

NEW QUESTION 112

A systems administrator is configuring RAID for a new server. This server will host files for users and replicate to an identical server. While redundancy is necessary, the most important need is to maximize storage.

Which of the following RAID types should the administrator choose?

- A. 5
- B. 6
- C. 10
- D. 50

Answer: C

NEW QUESTION 114

A SAN that holds VM files is running out of storage space.

Which of the following will BEST increase the amount of effective storage on the SAN?

- A. Enable encryption
- B. Increase IOPS
- C. Convert the SAN from RAID 50 to RAID 60
- D. Configure deduplication

Answer: D

NEW QUESTION 117

A cloud administrator is planning to migrate a globally accessed application to the cloud.

Which of the following should the cloud administrator implement to BEST reduce latency for all users?

- A. Regions
- B. Auto-scaling
- C. Clustering
- D. Cloud bursting

Answer: A

NEW QUESTION 121

After accidentally uploading a password for an IAM user in plain text, which of the following should a cloud administrator do FIRST? (Choose two.)

- A. Identify the resources that are accessible to the affected IAM user
- B. Remove the published plain-text password
- C. Notify users that a data breach has occurred
- D. Change the affected IAM user's password
- E. Delete the affected IAM user

Answer: BD

NEW QUESTION 126

A cloud administrator recently deployed an update to the network drivers of several servers. Following the update, one of the servers no longer responds to remote login requests. The cloud administrator investigates the issue and gathers the following information:

- The cloud management console shows the VM is running and the CPU and memory utilization is at or near 0%.
- The cloud management console does not show an IP address for that server.
- A DNS lookup shows the hostname resolves to an IP address.
- The server is a member of the same security group as the others.
- The cloud administrator is able to log in remotely to the other servers without issue.

Which of the following is the MOST likely cause of the server being unavailable?

- A. The network driver updates did not apply successfully, and the interface is in a down state.
- B. The ACL policy for the server was updated as part of the server reboot, preventing login access.
- C. The server was assigned a new IP address, and DNS entry for the server name was not updated.
- D. The update caused an increase in the output to the logs, and the server is too busy to respond.

Answer: A

NEW QUESTION 129

A systems administrator is provisioning VMs in a cloud environment and has been told to select an OS build with the furthest end-of-life date.

Which of the following OS builds would be BEST for the systems administrator to use?

- A. Open-source
- B. LTS
- C. Canary
- D. Beta
- E. Stable

Answer: E

NEW QUESTION 131

A systems administrator wants the VMs on the hypervisor to share CPU resources on the same core when feasible. Which of the following will BEST achieve this goal?

- A. Configure CPU passthrough
- B. Oversubscribe CPU resources
- C. Switch from a Type 1 to a Type 2 hypervisor
- D. Increase instructions per cycle
- E. Enable simultaneous multithreading

Answer: B

NEW QUESTION 133

A company has decided to scale its e-commerce application from its corporate datacenter to a commercial cloud provider to meet an anticipated increase in demand during an upcoming holiday.

The majority of the application load takes place on the application server under normal conditions. For this reason, the company decides to deploy additional application servers into a commercial cloud provider using the on-premises orchestration engine that installs and configures common software and network configurations.

The remote computing environment is connected to the on-premises datacenter via a site-to-site IPsec tunnel. The external DNS provider has been configured to use weighted round-robin routing to load balance connections from the Internet.

During testing, the company discovers that only 20% of connections completed successfully. INSTRUCTIONS

Review the network architecture and supporting documents and fulfill these requirements:

Part 1:

Analyze the configuration of the following components:

DNS, Firewall 1, Firewall 2, Router 1, Router 2, VPN and Orchestrator Server.

Identify the problematic device(s).

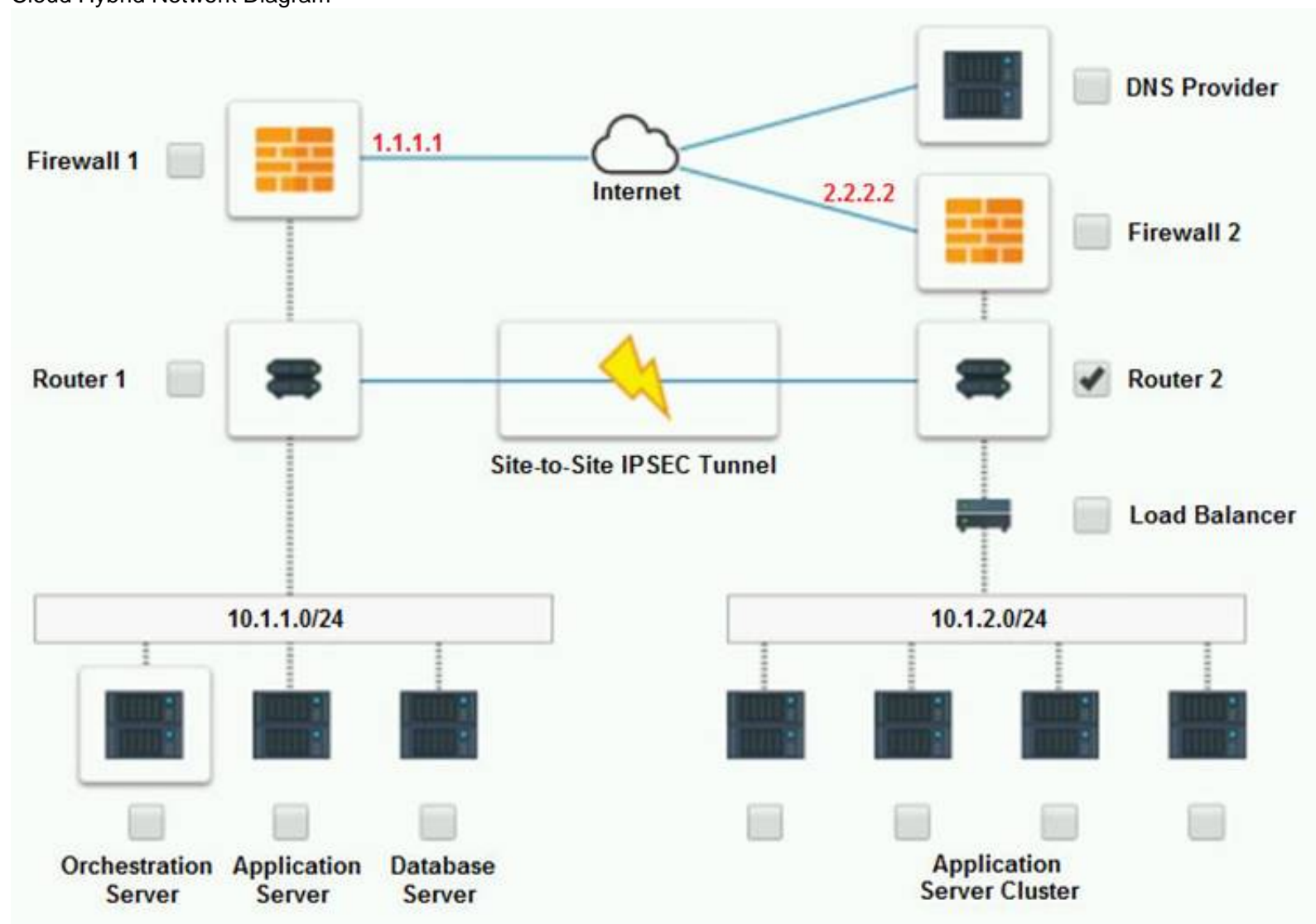
Part 2:

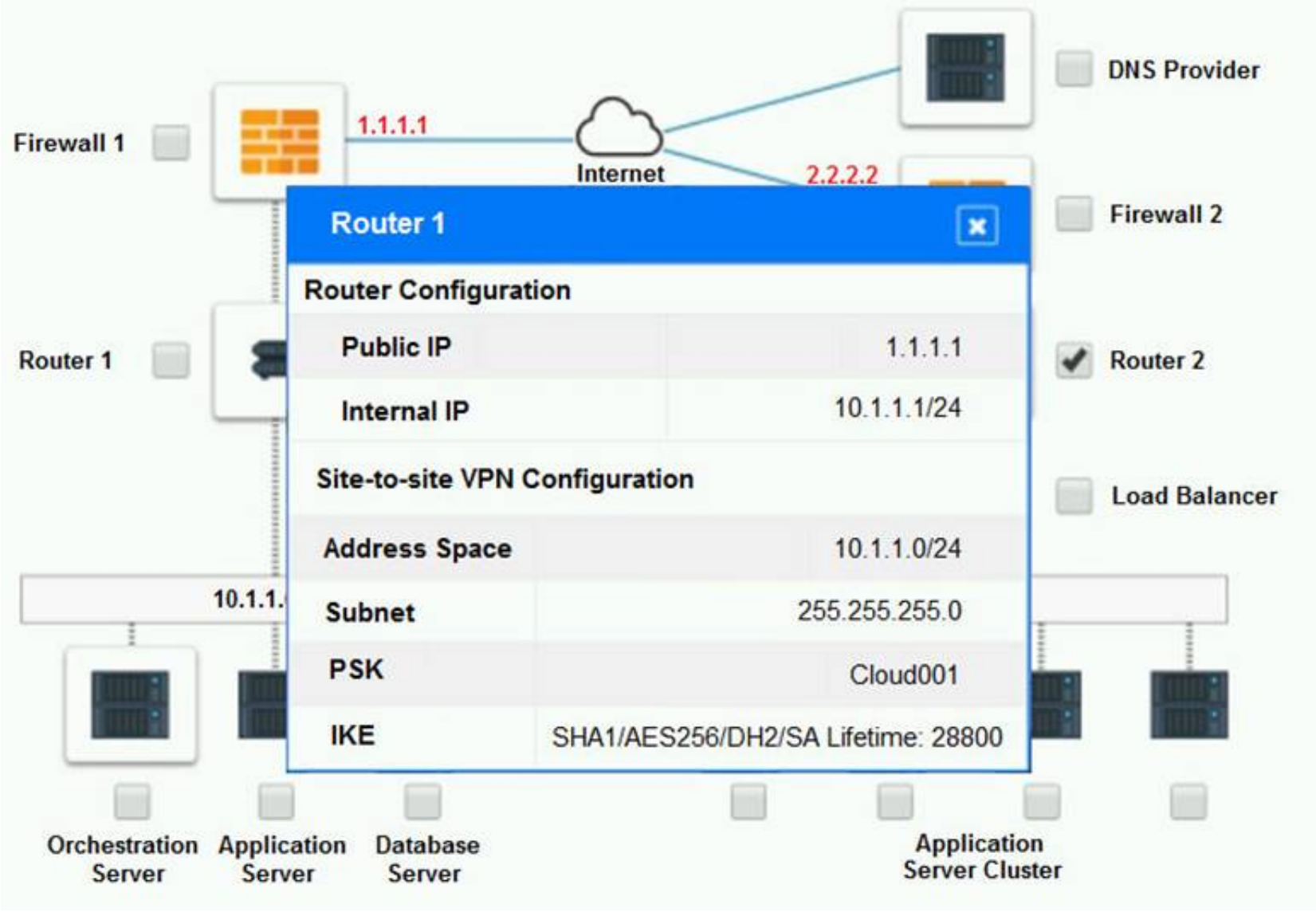
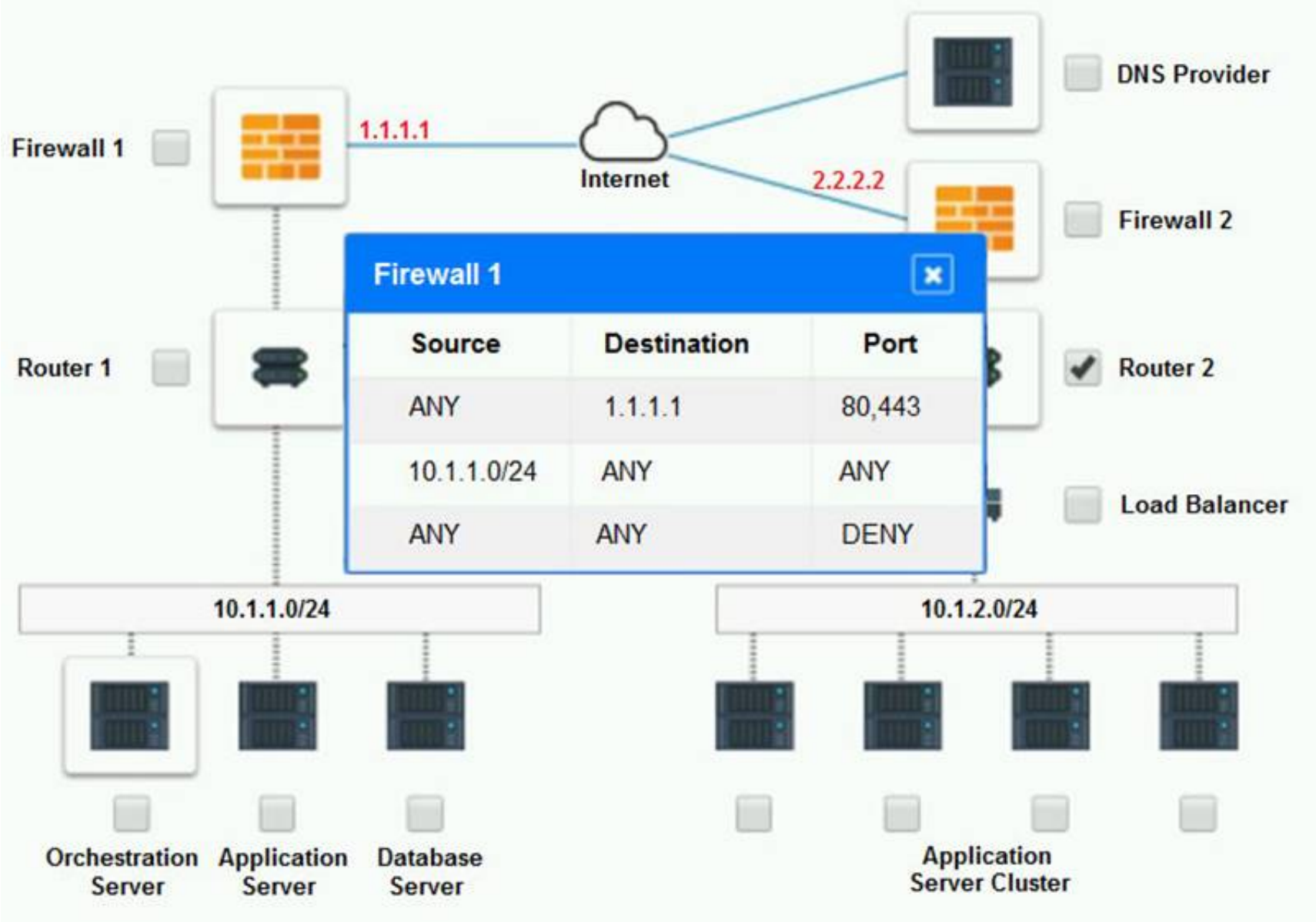
Identify the correct options to provide adequate configuration for hybrid cloud architecture.

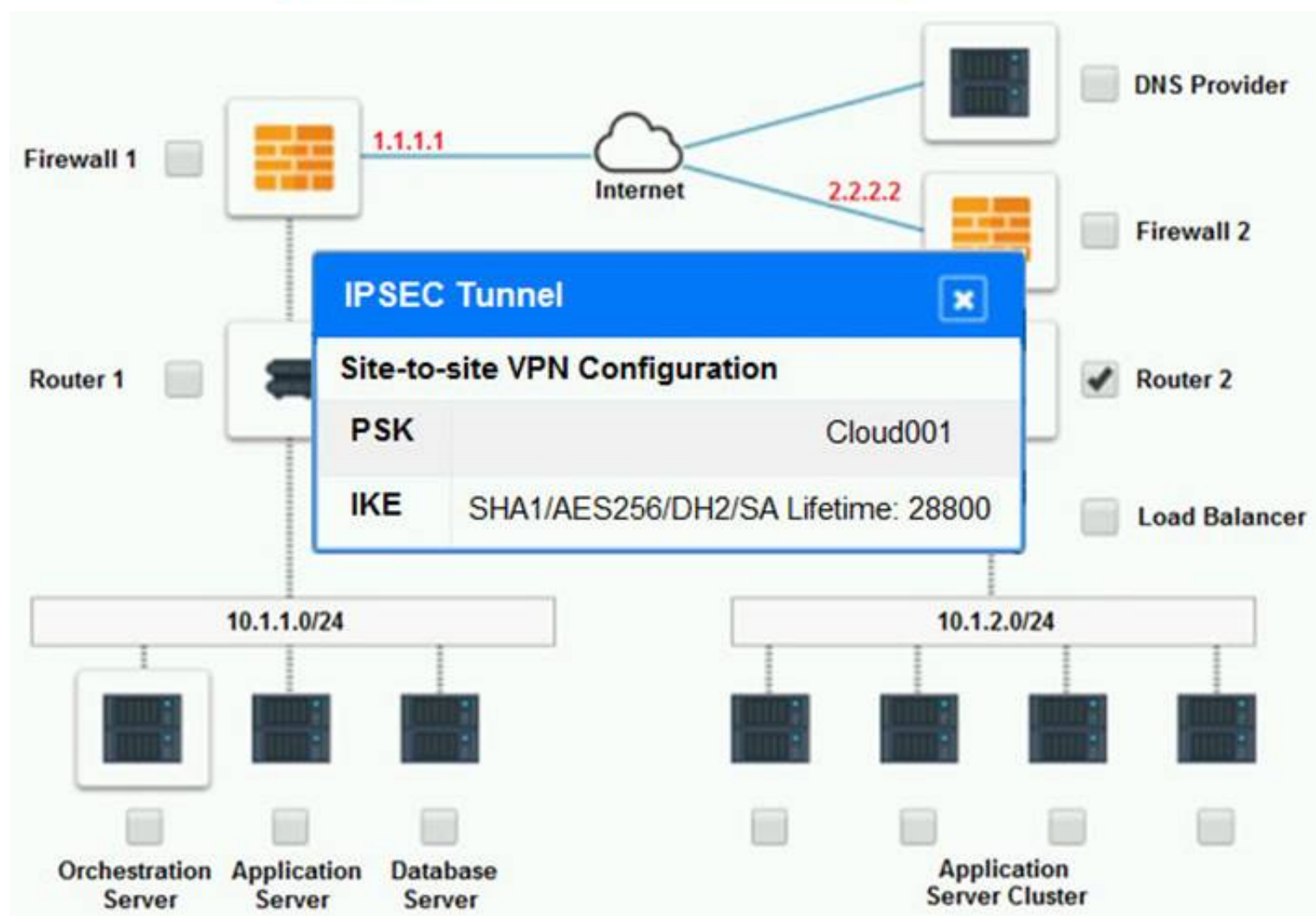
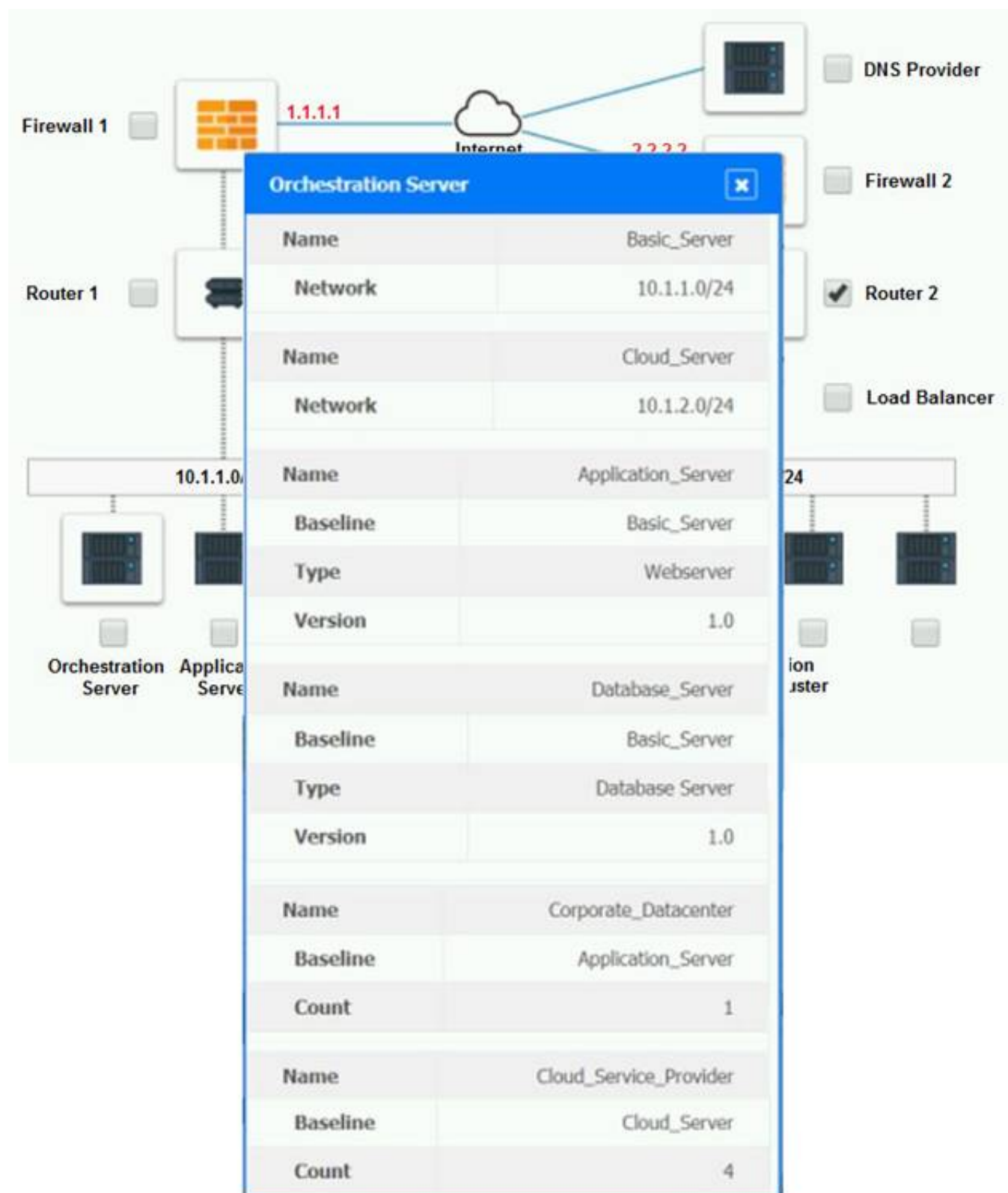
If at any time you would like to bring back the initial state of the simulation, please click the Reset All button.

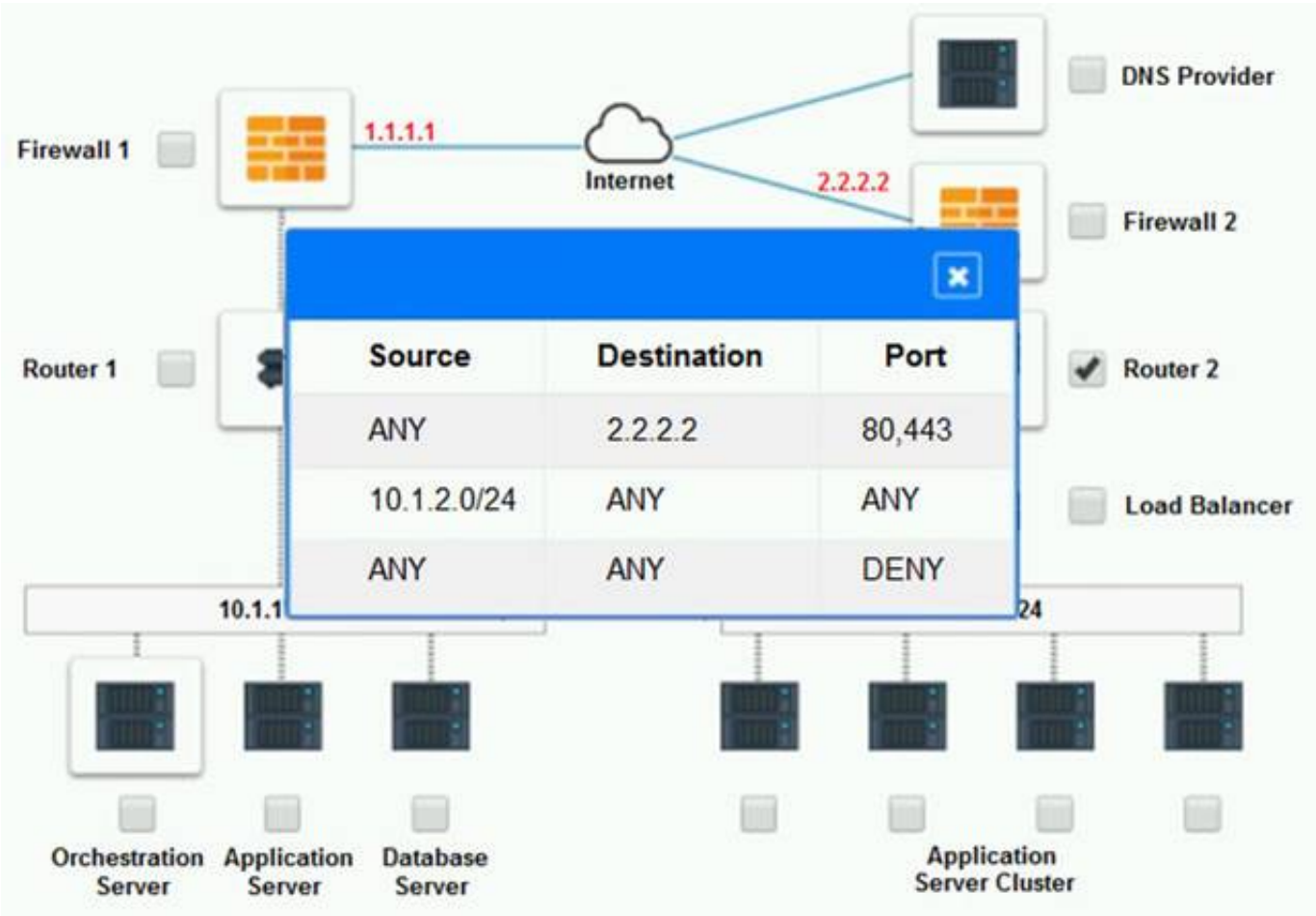
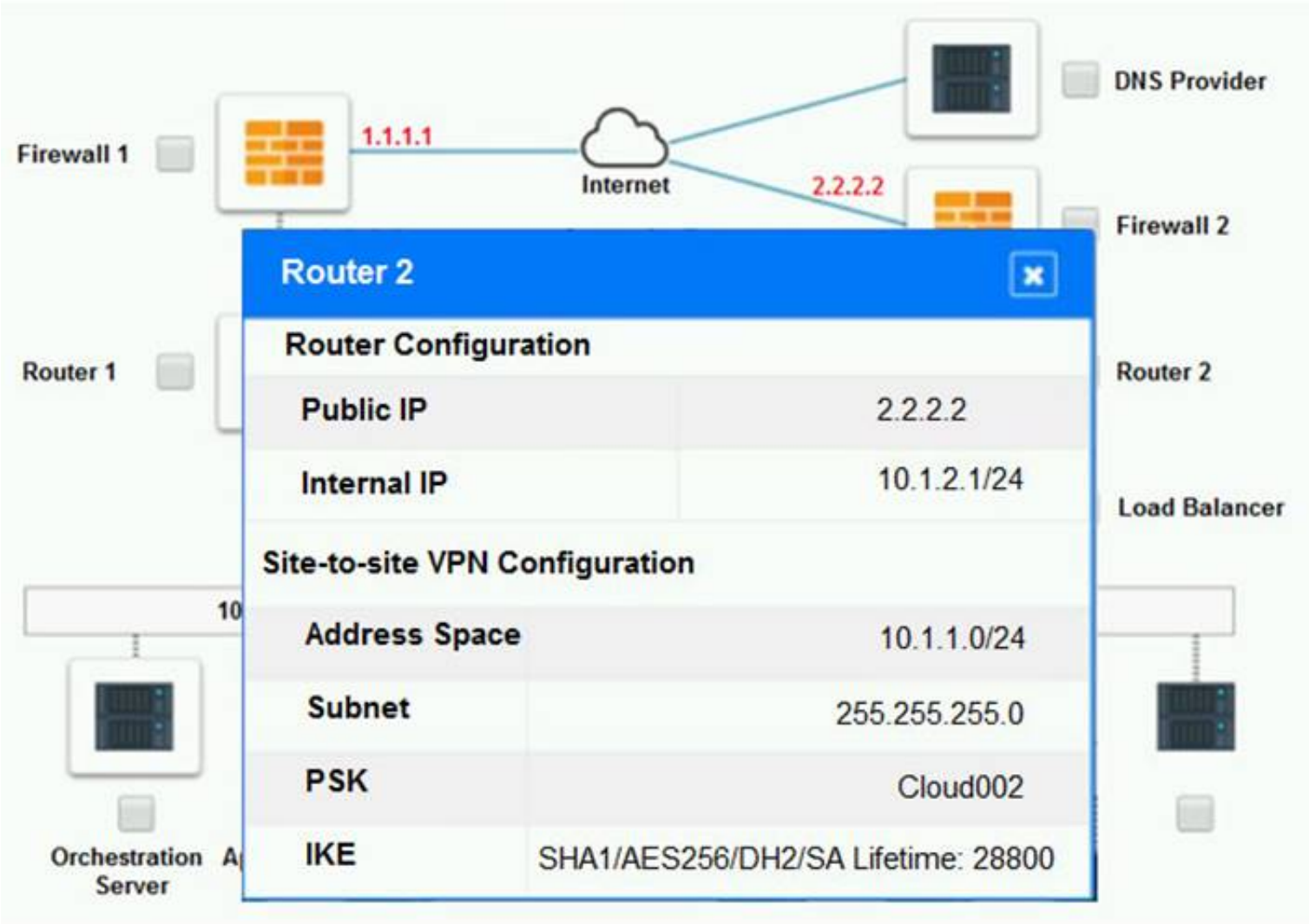
Part 1:

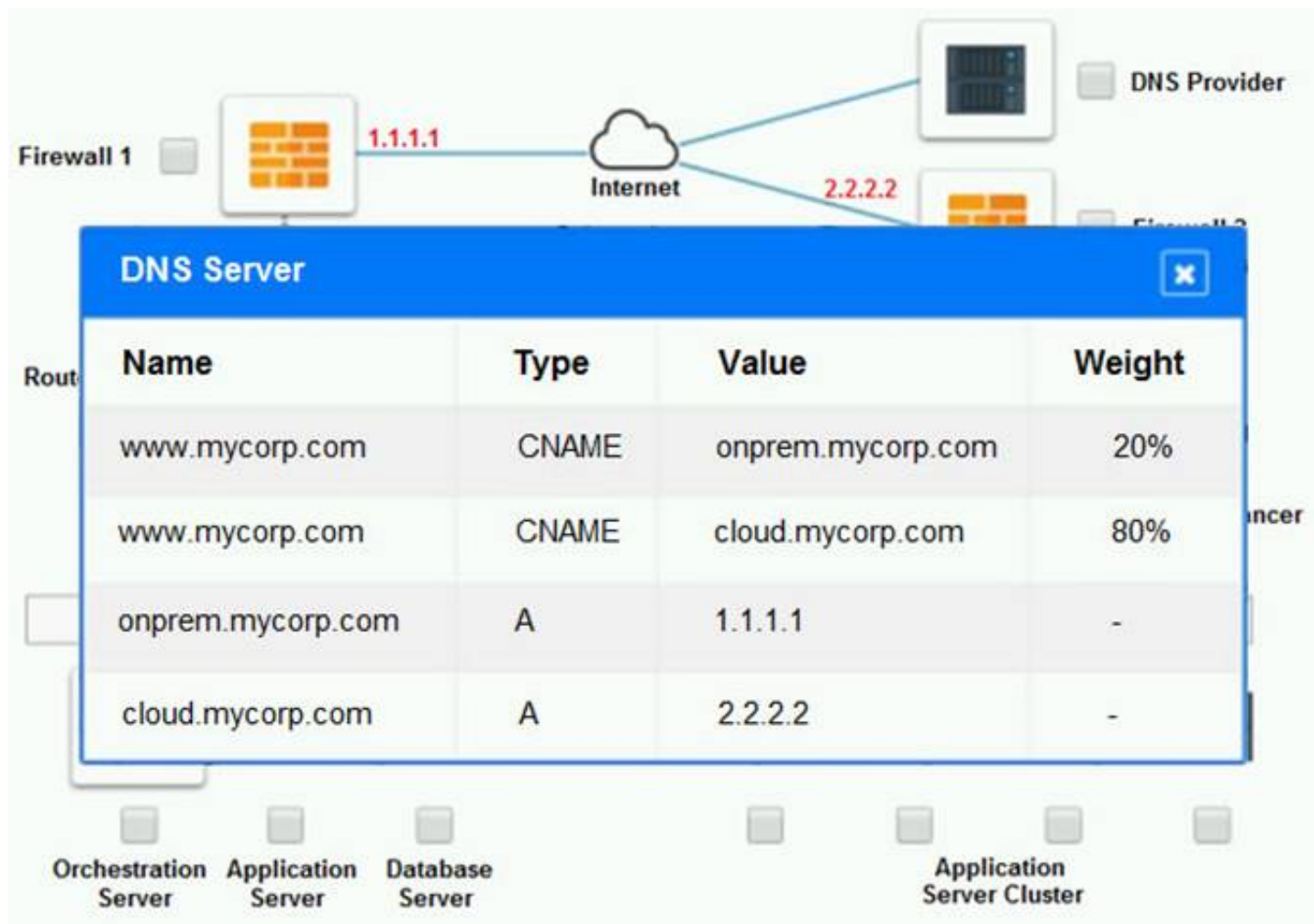
Cloud Hybrid Network Diagram











Part 2:

Only select a maximum of TWO options from the multiple choice question

- ☐ Deploy a Replica of the Database Server in the Cloud Provider.
- ☐ Update the PSK (Pre-shared key) in Router 2.
- ☐ Update the A record on the DNS from 2.2.2.2 to 1.1.1.1.
- ☐ Promote deny All to allow All in Firewall 1 and Firewall 2.
- ☐ Change the Address Space on Router 2.
- ☐ Change internal IP Address of Router 1.
- ☐ Reverse the Weight property in the two CNAME records on the DNS.
- ☐ Add the Application Server at on-premises to the Load Balancer.

- A. Mastered
- B. Not Mastered

Answer: A

Explanation:

See explanation below.

- > Change the Address Space on Router2
- > Update the PSK (Pre-shared key in Router2)

NEW QUESTION 135

A cloud administrator is building a new VM for a network security appliance. The security appliance installer says the CPU clock speed does not meet the requirements.

Which of the following will MOST likely solve the issue?

- A. Move the VM to a host with a faster CPU
- B. Add more vCPUs to the VM
- C. Enable CPU masking on the VM
- D. Enable hyperthreading on the virtual host

Answer: D

NEW QUESTION 138

A cloud engineer is responsible for managing a public cloud environment. There is currently one virtual network that is used to host the servers in the cloud environment. The environment is rapidly growing, and the network does not have any more available IP addresses. Which of the following should the engineer do to accommodate additional servers in this environment?

- A. Create a VPC and peer the networks.
- B. Implement dynamic routing.
- C. Enable DHCP on the networks.

D. Obtain a new IPAM subscription.

Answer: A

NEW QUESTION 140

A systems administrator is informed that a database server containing PHI and PII is unencrypted. The environment does not support VM encryption, nor does it have a key management system. The server needs to be able to be rebooted for patching without manual intervention. Which of the following will BEST resolve this issue?

- A. Ensure all database queries are encrypted
- B. Create an IPSec tunnel between the database server and its clients
- C. Enable protocol encryption between the storage and the hypervisor
- D. Enable volume encryption on the storage
- E. Enable OS encryption

Answer: C

NEW QUESTION 143

A developer is no longer able to access a public cloud API deployment, which was working ten minutes prior. Which of the following is MOST likely the cause?

- A. API provider rate limiting
- B. Invalid API token
- C. Depleted network bandwidth
- D. Invalid API request

Answer: D

NEW QUESTION 147

Users are experiencing slow response times from an intranet website that is hosted on a cloud platform. There is a site-to-site VPN connection to the cloud provider over a link of 100Mbps.

Which of the following solutions will resolve the issue the FASTEST?

- A. Change the connection to point-to-site VPN
- B. Order a direct link to the provider
- C. Enable quality of service
- D. Upgrade the link to 200Mbps

Answer: C

NEW QUESTION 152

A systems administrator notices that a piece of networking equipment is about to reach its end of support. Which of the following actions should the administrator recommend?

- A. Update the firmware
- B. Migrate the equipment to the cloud
- C. Update the OS
- D. Replace the equipment

Answer: A

NEW QUESTION 157

A company is doing a cloud-to-cloud migration to lower costs. A systems administrator has to plan the migration accordingly.

Which of the following considerations is MOST important for a successful, future-proof, and low-cost migration?

- A. Tier pricing
- B. Licensing
- C. Estimated consumption
- D. Feature compatibility

Answer: D

NEW QUESTION 160

A systems administrator is deploying a GPU-accelerated VDI solution. Upon requests from several users, the administrator installs an older version of the OS on their virtual workstations. The majority of the VMs run the latest LTS version of the OS.

Which of the following types of drivers will MOST likely ensure compatibility with all virtual workstations?

- A. Alternative community drivers
- B. Legacy drivers
- C. The latest drivers from the vendor's website
- D. The drivers from the OS repository

Answer: C

NEW QUESTION 165

Which of the following cloud deployment models allows a company to have full control over its IT infrastructure?

- A. Private
- B. Cloud within a cloud
- C. Hybrid
- D. Public

Answer: A

NEW QUESTION 168

A cloud administrator is setting up a DR site on a different zone of the same CSP. The application servers are replicated using the VM replication, and the database replication is set up using log shipping. Upon testing the DR site, the application servers are unable to access the database servers. The administrator has verified the systems are running and are accessible from the CSP portal. Which of the following should the administrator do to fix this issue?

- A. Change the database application IP
- B. Create a database cluster between the primary site and the DR site
- C. Update the connection string
- D. Edit the DNS record at the DR site for the application servers

Answer: C

NEW QUESTION 170

After analyzing a web server's logs, a systems administrator sees that users are connecting to the company's application through HTTP instead of HTTPS. The administrator then configures a redirect from HTTP to HTTPS on the web server, and the application responds with a connection time-out message. Which of the following should the administrator verify NEXT?

- A. The TLS certificate
- B. The firewall rules
- C. The concurrent connection limit
- D. The folder permissions

Answer: A

NEW QUESTION 172

An OS administrator is reporting slow storage throughput on a few VMs in a private IaaS cloud. Performance graphs on the host show no increase in CPU or memory. However, performance graphs on the storage show a decrease of throughput in both IOPS and MBps but not much increase in latency. There is no increase in workload, and latency is stable on the NFS storage arrays that are used by those VMs. Which of the following should be verified NEXT?

- A. Application
- B. SAN
- C. VM GPU settings
- D. Network

Answer: D

NEW QUESTION 173

A company is concerned about the security of its data repository that contains customer PII. A systems administrator is asked to deploy a security control that will prevent the exfiltration of such data. Which of the following should the systems administrator implement?

- A. DLP
- B. WAF
- C. FIM
- D. ADC

Answer: A

NEW QUESTION 176

A company needs a solution to find content in images. Which of the following technologies, when used in conjunction with cloud services, would facilitate the BEST solution?

- A. Internet of Things
- B. Digital transformation
- C. Artificial intelligence
- D. DNS over TLS

Answer: C

NEW QUESTION 181

.....

Thank You for Trying Our Product

We offer two products:

1st - We have Practice Tests Software with Actual Exam Questions

2nd - Questions and Answers in PDF Format

CV0-003 Practice Exam Features:

- * CV0-003 Questions and Answers Updated Frequently
- * CV0-003 Practice Questions Verified by Expert Senior Certified Staff
- * CV0-003 Most Realistic Questions that Guarantee you a Pass on Your FirstTry
- * CV0-003 Practice Test Questions in Multiple Choice Formats and Updatesfor 1 Year

100% Actual & Verified — Instant Download, Please Click
[Order The CV0-003 Practice Test Here](#)