

HP

Exam Questions HPE3-U01

Aruba Certified Network Technician Exam(ACNT)



NEW QUESTION 1

Which configurable switchport feature makes collisions impossible to occur?

- A. auto speed
- B. VLANs
- C. full-duplex
- D. half-duplex

Answer: C

NEW QUESTION 2

What are characteristics of Aruba Central? (Select two.)

- A. It must be deployed as an on-premises server.
- B. It manages networking equipment using SNMP.
- C. It manages networking equipment using HTTPs.
- D. It can manage third-party networking equipment.
- E. It is considered cloud-based network management.

Answer: DE

NEW QUESTION 3

How many addresses does the 255.255.252.0 provide?

- A. 16384
- B. 32768
- C. 8192
- D. 1024

Answer: D

NEW QUESTION 4

Why do clients run the Address Resolution Protocol (ARP)?

- A. To discover the destination address of the Layer 3 header of IP packets.
- B. To discover the source address of the Layer 3 header of IP packets.
- C. To discover the destination address of the Layer 2 header that encapsulates IP packets.
- D. To discover the source address of the Layer 2 header that encapsulates IP packets.

Answer: B

NEW QUESTION 5

Which condition allows 5GHz channels to avoid Adjacent Channel Interference?

- A. transmit at 40 MHz bandwidth
- B. transmit at high power levels
- C. transmit at low power levels
- D. transmit at 20 MHz bandwidth

Answer: A

NEW QUESTION 6

What is a true statement about wireless communications using Wi-Fi?

- A. Amplitude, phase, and frequency of radio waves are modulated to transmit data
- B. Wireless communications have a maximum range of 10 meters (30 feet)
- C. Amplitude, phase, and frequency of radio waves are modulated to increase range
- D. Wireless communications have a minimum range of 10 meters (30 feet)

Answer: C

NEW QUESTION 7

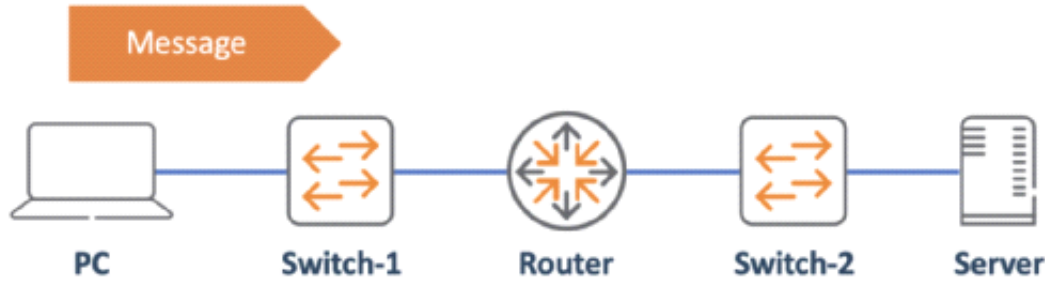
Which protocol provides frame delivery using physical addressing and error detection using frame check sequence?

- A. Link Layer Discovery Protocol
- B. Ethernet
- C. TCP/IP
- D. User Datagram Protocol

Answer: A

NEW QUESTION 8

Refer to Exhibit.



The PC is sending a message to the server. Which devices have performed Layer 2 encapsulation by the time the message arrives at the server? (Select two.)

- A. PC
- B. Server
- C. Router
- D. switch-2
- E. Switch-1

Answer: DE

NEW QUESTION 9

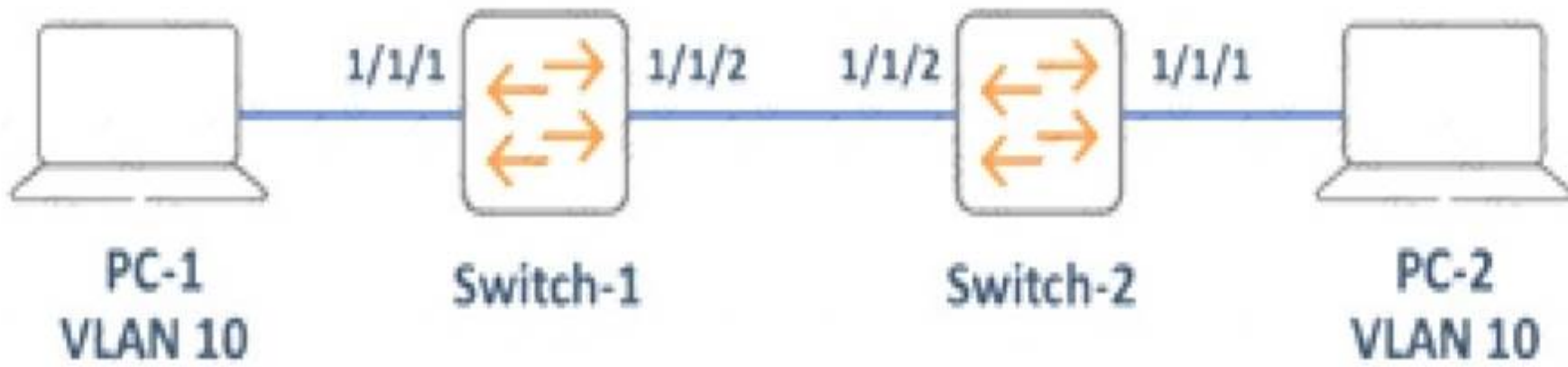
You are managing an ArubaOS-CX switch using the CLI. The current prompt reads "Switch(config-if>#". Which single CLI command should you issue to move back to the Manager context?

- A. end
B. disable
C. quit
D. exit

Answer: A

NEW QUESTION 10

Refer to Exhibit.



PC-1 and PC-2 are connected to Interfaces configured as access ports on VLAN 10. All other ports on Switch-1 and Switch-2 are in default settings. Which configuration is required on Doth switches to allow inter-PC communication in the same Broadcast domain?

- ☐ interface 1/1/2 \$ no routing \$ \$ vlan access 10 \$
- ☐ interface 1/1/2 \$ no routing \$ \$ vlan trunk allow 10 \$
- ☐ interface 1/1/2 \$ allow vlan 10 \$
- ☐ interface 1/1/2 \$ vlan access 10 \$ \$ vlan trunk native 1 \$

- A. Option A
B. Option B
C. Option C
D. Option D

Answer: A

NEW QUESTION 10

Which accurately describes the 051 Model?

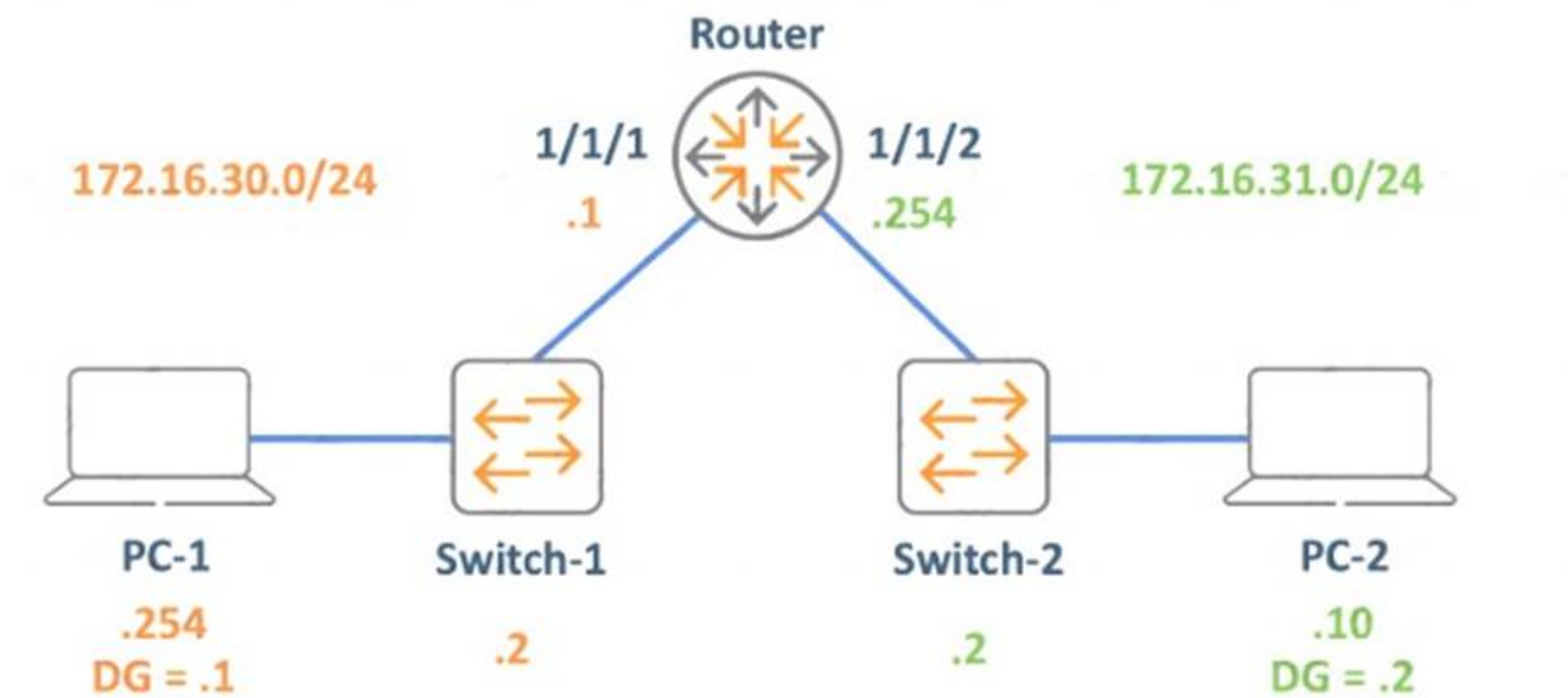
- A. It is a reference model that describes data flow over the network using four layers.
B. It is a reference model that is used to convert binary bits into analog signals.

- C. It is a reference model that explains how data is created by the application layer.
 D. It is a reference model that describes how data communications occur on a network.

Answer: D

NEW QUESTION 11

Refer to Exhibit.



The PCs are not able to successfully establish bidirectional communication. What change must you deploy to enable the communication between PC-1 and PC-2?

- A. change PC-1 's default gateway to 172.16.30.2
 B. change PC-1's IP address to 172.16.30.10
 C. change the Router's 1/1/1 interface IP to 172.16.30.254
 D. change PC-2's default gateway to 172.16.31.254

Answer: C

NEW QUESTION 13

Exhibit:



What are valid configurable "Client VLAN Assignment" options for a Bridge-based WLAN in Aruba Central? (Select three.)

- A. native VLAN
 B. automatic VLAN
 C. hybrid VLAN
 D. static VLAN

Answer: D

NEW QUESTION 16

Which characteristic allows switches to mitigate collisions?

- A. The switches support VLANs that segment the collision domains.
 B. The switches use L3 protocols that eliminate collisions.
 C. The switches' ports are independent collision domains.
 D. The switches have proprietary features that help eliminate collisions.

Answer: A

NEW QUESTION 20

At which section of the Aruba Central WLAN configuration Wizard can you set the Role Based controls?

- A. Access
 B. VLANs
 C. Security

D. General

Answer: A

NEW QUESTION 22

Which message is an example of Broadcast communication?

- A. DHCP offer
- B. ICMP Echo
- C. HTTP Get
- D. ARP Request

Answer: B

NEW QUESTION 24

What do the digits in the ArubaOS-CX switch interface numbering represent?

- A. Member/Slot/Port
- B. Slot/Member/Port
- C. Stack/Member/Port
- D. Module/Slot/Port

Answer: C

NEW QUESTION 28

.....

Thank You for Trying Our Product

We offer two products:

1st - We have Practice Tests Software with Actual Exam Questions

2nd - Questions and Answers in PDF Format

HPE3-U01 Practice Exam Features:

- * HPE3-U01 Questions and Answers Updated Frequently
- * HPE3-U01 Practice Questions Verified by Expert Senior Certified Staff
- * HPE3-U01 Most Realistic Questions that Guarantee you a Pass on Your FirstTry
- * HPE3-U01 Practice Test Questions in Multiple Choice Formats and Updatesfor 1 Year

100% Actual & Verified — Instant Download, Please Click
[Order The HPE3-U01 Practice Test Here](#)