

Cisco

Exam Questions 350-601

Implementing and Operating Cisco Data Center Core Technologies



NEW QUESTION 1

Which product includes prebuilt templates that can be used to customize fabric deployments?

- A. Cisco ACI
- B. Cisco UCS Manger
- C. Cisco data Center Network Manger
- D. Cisco Tetration

Answer: C

Explanation:

<https://www.cisco.com/c/en/us/products/collateral/cloud-systems-management/prime-data-center-networkmanag>

https://www.cisco.com/c/en/us/td/docs/switches/datacenter/sw/11_2_1/config_guide/lanfabric/b_dcnm_fabric_lan/template_usage.html

NEW QUESTION 2

An engineer must configure HSRP protocol on two Cisco Nexus 9000 Series Switches running a virtual port channel. In addition, the HSRP implementation must meet these requirements:

- It must allow more than 500 groups.
- switch 1 must act as the primary switch.
- Both switches must use a user-defined hardware address.

Drag and drop the commands from the right to complete a configuration of the HSRP on the left. The commands are used more than once. Not all commands are used.

```
! switch1

interface vlan300
ip 209.165.200.226/27
hsrp 300

[ ]

[ ]

ip 209.165.200.225
[ ]

! switch2

interface vlan300
ip 209.165.200.227/27
hsrp 300

[ ]

[ ]

ip 209.165.200.225
[ ]
```

mac-address 6000.6000.6000

hsrp version 1

priority 255

hsrp use-bia

priority 100

hsrp version 2

- A. Mastered
- B. Not Mastered

Answer: A

Explanation:

Switch 1:

Box 1 = hsrp version 2

Box 2 = priority 100

Box 3 = mac-address 6000.6000.6000

Switch 2:

Box 1 = hsrp version 2

Box 2 = priority 255

Box 3 = mac-address 6000.6000.6000

NEW QUESTION 3

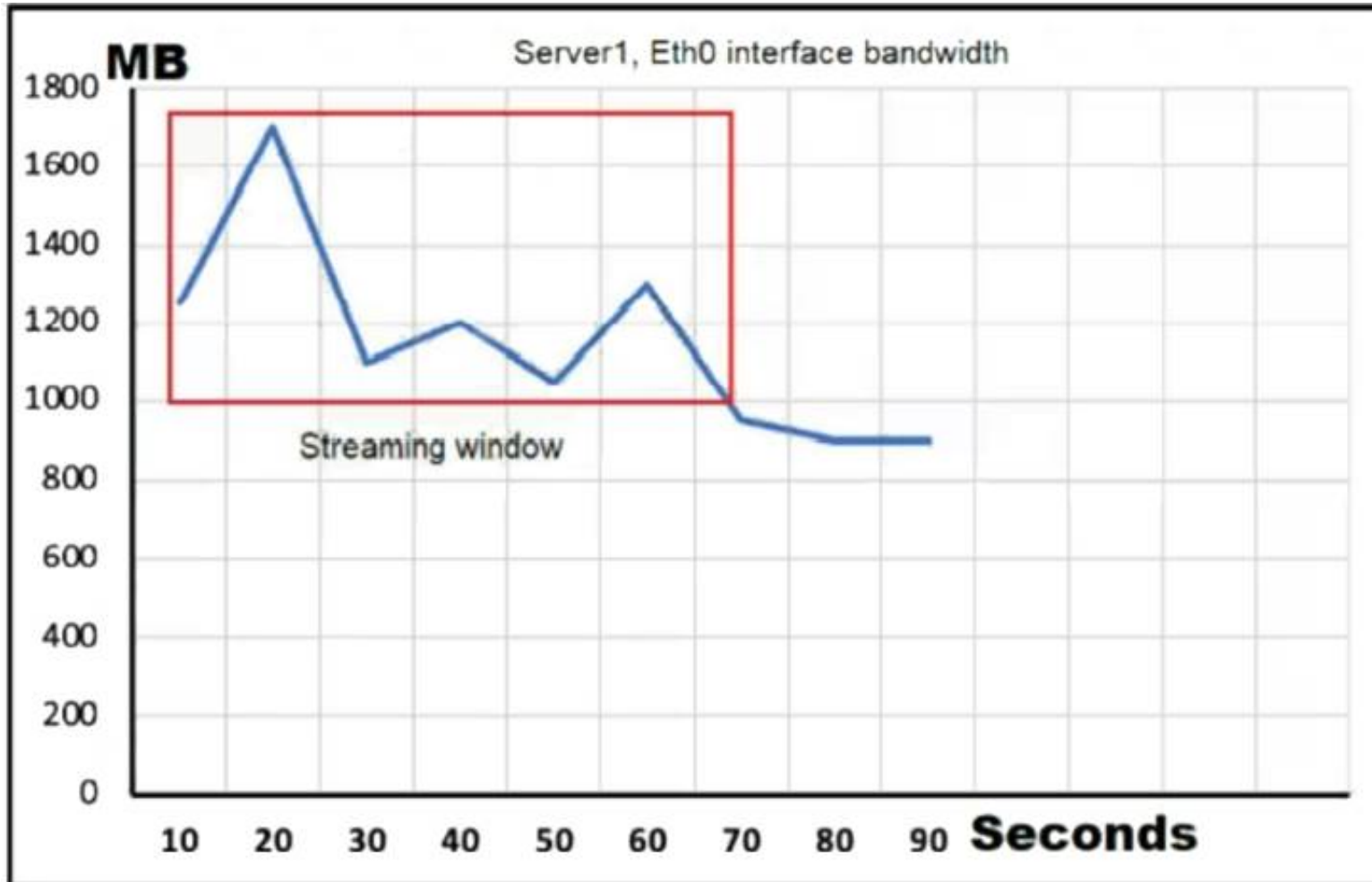
An engineer must configure a Cisco UCS domain for monitoring and management by the Cisco Intersight SaaS platform. After the setup is complete, administrators must have full control to configure the device through Cisco UCS Manager and Intersight. Which set of actions accomplishes this task?

- A. Configure Device Connector Access Mode as Allow Control in Device Console Claim the device on Intersight as UCSM Managed Mode.
- B. Configure Device Connector Access Mode as Allow Control in Cisco UCS Manager Claim the device on intersightc as Intersight Managed Mode
- C. Configure Device Connector Access Moao as Allow Control in Device Consol
- D. Claim the device on intersight as Intersight Managed Mode
- E. Configure Device Connector Access Mode as Allow Control in Cisco UCS Manager Claim the device on intersight as UCSM Managed Mode
- F. Option A
- G. Option B
- H. Option C
- I. Option D

Answer: C

NEW QUESTION 4

Refer to the exhibit.



Server1 is connected to a Cisco Nexus 9000 Series Switch via a 1-Gb port channel. The storm control is applied to the Eth0 device with a zero percent value. What does the switch do to traffic that traverses the switch interfaces during the streaming window that exceeds the bandwidth of the interfaces?

- A. forwards all traffic
- B. forwards half of the traffic
- C. suppresses all traffic
- D. drops all of the excess traffic

Answer: B

NEW QUESTION 5

Refer to the exhibit.

```
FI-1# scope org /
FI-1 /org # create maint-policy maintenance
FI-1 /org/maint-policy* # set reboot-policy timer-automatic
FI-1 /org/maint-policy* # set soft-shutdown-timer never
```

Which action must be taken before the maintenance policy can be committed?

- A. Set the soft shutdown timer to a specific time.
- B. Associate a service profile to the maintenance policy.
- C. Set the policy to apply the change on the next reboot.
- D. Specify a maintenance time by selecting a schedule.

Answer: D

Explanation:

https://www.cisco.com/c/en/us/td/docs/unified_computing/ucs/ucs-manager/CLI-User-Guides/Admin-Management/3-1/b_Cisco_UCS_Manager_CLI_Administration_Mgmt_Guide_3_1/b_Cisco_UCS_Manager_CLI_Administration_Mgmt_Guide_3_1_chapter_01100.html

NEW QUESTION 6

A server engineer wants to control power uses on a Cisco UCS C-series rack server down to the component level. Which two components support specific power limits? (Choose two.)

- A. memory
- B. graphic card
- C. processor
- D. network controller
- E. storage controller

Answer: AC

NEW QUESTION 7

A new employee must be granted access to add VLANs into an existing Cisco UCS Manager and configure NTP synchronization with date and time zone settings. Which two privileges must be granted to the employee to complete the task? (Choose two.)

- A. Service Profile Compute (ls-compute)
- B. Ext LAN Config (ext-lan-security)
- C. Service Profile Network Policy (ls-network-policy)
- D. Service Profile Config (ls-config)
- E. Ext LAN Policy (ext-lan-policy)

Answer: BE

Explanation:

https://www.cisco.com/c/en/us/td/docs/unified_computing/ucs/ucs-manager/Reference-Docs/Privileges/4-1/b-U

NTP can be configured only with EXT LAN Security. VLAN can be added using the following privileges:

- Ext Lan Config (ext-lan-config)
- Ext Lan Policy (ext-lan-policy)

service profiles will add VLANs to vNICs only if they are configured to UCS manager. So service profile is not valid solution.

NEW QUESTION 8

Drag and drop the firmware packages from the left onto the software bundles they belong to on the right.

Board controller firmware	Cisco UCS Infrastructure Software Bundle
BIOS firmware	
Kernel and system firmware for Fabric Interconnects	
CIMC firmware	Cisco UCS B-Series Blade Server Software Bundle
I/O module firmware	
Cisco UCS Manager software	

- A. Mastered
- B. Not Mastered

Answer: A

Explanation:

Diagram Description automatically generated

NEW QUESTION 9

What is a feature of NFS?

- A. role-based access control
- B. Kerberos-based security model
- C. block-based file access
- D. zone-based access control

Answer: B

Explanation:

<https://www.cisco.com/c/en/us/support/docs/security-vpn/kerberos/16087-1.html#modifiednfs>

Kerberos Security Implications of the Modified NFS

This implementation is not completely secure. For starters, user data is still sent across the network in an unencrypted, and therefore interceptable, form. The low-level, per-transaction authentication is based on a <CLIENT-IP-ADDRESS, CLIENT-UID> pair provided unencrypted in the request packet. This information could be forged and thus security compromised. However, it should be noted that only while a user is actively using her/his files (that is, while logged in) are valid mappings in place and therefore this form of attack is limited to when the user in question is logged in. When a user is not logged in, no amount of IP address forgery will permit unauthorized access to her/his files.

NEW QUESTION 10

Which two methods are available to Manage an ACI REST API session authentication when a user is unauthenticated?

- A. POST to aaaLogin
- B. POST to aaaUserLogin
- C. GET aaaRefresh
- D. GET to aaaListDomains
- E. DELETE to aaaLogout

Answer: AC

Explanation:

These API methods enable you to manage session authentication:

aaaLogin —Sent as a POST message, this method logs in a user and opens a session. The message body contains an aaa:User object with the name and password attributes, and the response contains a session token and cookie. If multiple AAA login domains are configured, you must prepend the user's name with apic: domain\\ .

aaaRefresh —Sent as a GET message with no message body or as a POST message with the aaaLogin message body, this method resets the session timer. The response contains a new session token and cookie.

aaaLogout —Sent as a POST message, this method logs out the user and closes the session. The message body contains an aaa:User object with the name attribute. The response contains an empty data structure.

aaaListDomains —Sent as a GET message, this method returns a list of valid AAA login domains. You can send this message without logging in.

https://www.cisco.com/c/en/us/td/docs/switches/datacenter/aci/apic/sw/2-x/rest_cfg/2_1_x/b_Cisco_APIC_REST_API_Configuration_Guide/b_Cisco_APIC_REST_API_Configuration_Guide_chapter_01.html

NEW QUESTION 10

Which statement about the MAC address that the FCoE Initialization Protocol chooses for use by an E-Node in an FCoE implementation is true?

A. The FCoE Initialization Protocol uses the burned-in MAC address of the converged network adapter for all FCoE operations.

B. The FCoE Initialization protocol uses a 24-bit FC-MAP and concatenates a 24-bit Fibre Channel ID to create a fibric-provided MAC address.

C. The FCoE Initialization Protocol uses 01.00.0C as the first 24 bits of the MAC address and appends a 24-bit Fibre Channel ID to derive a full 48-bit FCoE MAC address.

D. FCoE does not use a MAC address

E. The FCoE Initialization Protocol is used to acquire a Fibre Channel ID, and the address is used for all FCoE communications in the same way as Fibre Channel Protocol.

Answer: B

Explanation:

https://www.cisco.com/c/en/us/td/docs/solutions/Enterprise/Data_Center/UF_FCoE_final.html#wp1154912

NEW QUESTION 12

Where does the witness VM reside in a Cisco Hyperflex Edge deployment?

A. Windows application

B. Hyper Rex Data Platform

C. Cisco Intersight

D. local HyperFlex datastore

Answer: C

NEW QUESTION 14

A network engineer must SPAN only the ingress traffic of a Cisco MDS 9000 series switch from interface fc 1/23 to interface fc 1/24. Which two configuration must be applied to complete this task? (Choose two)

```
interface fc 1/24
-- output omitted --
no shutdown
span session 1
-- output omitted --
destination interface fc 1/24

MDS-A(config-if)# switchport mode SD
MDS-A(config-if)# switchport mode TL
MDS-A(config-span)# source interface fc 1/23 rx
MDS-A(config-span)# source interface fc 1/23
MDS-A(config-span)# source interface fc 1/23 tx
```

A. Option A

B. Option B

C. Option C

D. Option D

Answer: AC

NEW QUESTION 16

Which component is upgraded by using an EPLD upgrade on a Cisco Nexus 9000 Series Switch?

- A. dual-homed fabric extenders
- B. BIOS
- C. field-programmable gate arrays
- D. ISSU of the NX-OS version

Answer: C

NEW QUESTION 20

Which two authentication types does Cisco UCS Manager support when configuration authentication? (Choose two.)

- A. local
- B. LDAP
- C. 802.1X
- D. Kerberos
- E. PAM

Answer: AB

Explanation:

https://www.cisco.com/c/en/us/td/docs/unified_computing/ucs/ucs-manager/GUI-User-Guides/Admin-Management/3-2/b_Cisco_UCS_Admin_Mgmt_Guide_3_2/b_Cisco_UCS_Admin_Mgmt_Guide_3_2_chapter_0101.html

NEW QUESTION 22

After a Cisco Nexus 7000 Series Switch chassis replacement, the administrator discovers that all vPC-enabled LACP port channels are reinitialized. The administrator wants to prevent this issue the next time the chassis is replaced. Which two actions must be taken to meet this requirement before the isolated device is reloaded? (Choose two)

- A. Set the vPC MAC address to a lower value than the peer
- B. Change the vPC system-priority of the replacement chassis to a higher value than the peer if.
- C. Change the vPC system-priority of the replacement chassis to a lower value than the peer.
- D. Set the vPC MAC address to a higher value than the peer
- E. Configure auto-recovery to the disable state on both peers

Answer: BE

Explanation:

https://www.cisco.com/c/en/us/td/docs/switches/datacenter/nexus9000/sw/6-x/interfaces/configuration/guide/b_-----

<https://community.cisco.com/t5/networking-documents/vpc-auto-recovery-feature-in-nexus-7000/ta-p/3123651>

vPC and LACP

The Link Aggregation Control Protocol (LACP) uses the system MAC address of the vPC domain to form the LACP Aggregation Group (LAG) ID for the vPC.

You can use LACP on all the vPC EtherChannels, including those channels from the downstream switch. We recommend that you configure LACP with active mode on the interfaces on each EtherChannel on the vPC peer switches. This configuration allows you to more easily detect compatibility between switches, unidirectional links, and multihop connections, and provides dynamic reaction to run-time changes and link failures.

The vPC peer link supports 16 EtherChannel LACP interfaces. You should manually configure the system priority on the vPC peer-link switches to ensure that the vPC peer-link switches have a **higher LACP priority** than the downstream connected switches. A **lower numerical value system priority means a higher LACP priority**.

NEW QUESTION 25

A customer data center is configured for distribution of user roles, call home, and NTP. The data center was split into two geographically separate locations called DC1 and DC2. The requirement is for the user role configurations to be distributed in DC1 and for NTP and call home features to be constrained to DC2. Which two configuration sets must be used to meet these requirements? (Choose two.)

- A. ! On Data Center 1
configure terminal
cfs 1
roles
aaa
- B. ! On Data Center 1
configure terminal
cfs region 1
ntp
callhome
- C. ! On Data Center 1
configure terminal
cfs 1
ntp
callhome
- D. ! On Data Center 2
configure terminal
cfs region 2
roles
- E. ! On Data Center 2
configure terminal
cfs 2
roles
aaa

- A. Option A
- B. Option B
- C. Option C
- D. Option D
- E. Option E

Answer: CD

Explanation:

This example shows how to move the Call Home application to CFS region 2:

```
switch# config t
switch(config)# cfs region 2
switch(config-cfs-region)# callhome
switch(config-cfs-region)# show cfs region name callhome
```

https://www.cisco.com/c/en/us/td/docs/switches/datacenter/sw/4_2/nx-os/system_management/configuration/guide/sm_nx_os_cli/sm_2cfs.html

NEW QUESTION 29

Which method must a network engineer use to upgrade the BIOS firmware of a Cisco UCS standalone C-Series rack-mount server?

- A. Use the Cisco host upgrade utility.
- B. Use the Cisco hardware upgrade utility.
- C. Use the Cisco host firmware policy.
- D. Use the U-ACPI Interface.

Answer: A

NEW QUESTION 32

Refer to the exhibit.

LAN / Traffic Monitoring Sessions / Fabric A / Monitor Session test-span

General Faults Events

Actions	Properties
Set Destination	Name : test-span
Clear Destination	Admin State : <input checked="" type="radio"/> Enabled <input type="radio"/> Disabled
Delete	Destination : sys/switch-A/slot-1/switch-ether/port-17
	Admin Speed : <input type="radio"/> 1 Gbps <input checked="" type="radio"/> 10 Gbps <input type="radio"/> 40 Gbps
	Operational State : Down
	Operational State Reason : No Sources Configured
	Configuration Success : Yes
	Configuration Failure Reason :

Sources

An engineer must monitor all LAN traffic on Fabric A from a blade server. Which source should be configured in the test-span monitor session to complete this task?

- A. all vHBAs from the service profile that correspond to this server
- B. all uplink FCoE ports
- C. all uplink Ethernet ports
- D. all vNICs from the service profile that correspond to this server

Answer: D

Explanation:

https://www.cisco.com/en/US/docs/unified_computing/ucs/sw/gui/config/guide/141/UCSM_GUI_Configuration

Guidelines and Recommendations for Traffic Monitoring

When configuring or activating traffic monitoring, consider the following guidelines:

- You can create and store up to 16 traffic monitoring sessions, but only two can be active at the same time.
- A traffic monitoring session is disabled by default when created. To begin monitoring traffic, you must activate the session.
- To monitor traffic from a server, add all vNICs from the service profile corresponding to the server.
- To monitor traffic from a VM, you must first determine the identity of the dynamic vNIC assigned to the VM. Follow the procedure in to find the vNIC and view its identity properties, then add the vNIC as a source for the monitoring session. If you later move the VM using VMotion, a new dynamic vNIC is assigned and you must reconfigure the monitoring source.

Viewing Dynamic vNIC Properties in a VM

- You can monitor Fibre Channel traffic using either a Fibre Channel traffic analyzer or an Ethernet traffic analyzer. When Fibre Channel traffic is monitored using an Ethernet traffic monitoring session, with an Ethernet destination port, the destination traffic will be FCoE.
- Because a traffic monitoring destination is a single physical port, a traffic monitoring session can monitor only a single fabric. To monitor uninterrupted vNIC traffic across a fabric failover, you must create two sessions—one per fabric—and connect two analyzers. Add the vNIC as the traffic source for both sessions.
- All traffic sources must be located within the same switch as the destination port.
- A port configured as a destination port cannot also be configured as a source port.
- A member port of a port channel cannot be configured individually as a source. If the port channel is configured as a source, all member ports are source ports.

NEW QUESTION 36

What is a benefit of Cisco HyperFlex All-Flash Stretched cluster deployment as compared to All-HDD Stretched cluster deployment?

- A. lower cost
- B. lower number of IOPS
- C. higher cost
- D. higher number of IOPS

Answer: D

NEW QUESTION 39

An engineer is implementing the Cisco ACI fabric and wants to reduce the amount of TCAM resources consumed by the fabric. The engineer also needs to ensure that all EPGs in a VRF consume the same services. Which action should be taken to meet these requirements?

- A. Configure a single contract provided and consumed in all EPGs
- B. Configure preferred groups in the VRF for all EPGs
- C. Implement an unenforced VRF
- D. Implement vzAny feature

Answer: A

NEW QUESTION 41

An engineer must send JSON encoded telemetry data to an external collector. The transport mechanism must prevent tampering or forgery of the data. Which protocol accomplishes this goal?

- A. GPB
- B. HTTP
- C. gRPC
- D. DTLS

Answer: B

NEW QUESTION 45

An engineer upgrades the bash on the Cisco Nexus 9000 Series Switch.

```
guestshell:~$ sudo [MISSING_COMMAND] /bootflash/bash-4.2_8642092948678a-r8x86_64.rpm.rpm
Preparing...
##### [100%]
1:bash ##### [100%]
update-alternatives: Linking //bin/sh to /bin/bash
```

Which command must be used to complete the task?

- A. rpm -qa
- B. rpm -Uhv
- C. upgrade -U
- D. update -vh

Answer: B

NEW QUESTION 48

A Cisco MDS 9000 Series Switch is configured for SAN Analytics and SAN Telemetry Streaming. An engineer must enable analytics for NVMe on interfaces in the range of fc1/1-12. Due to a large amount of traffic generated in the SAN environment, the data must be collected at regular intervals of 60 seconds from ports fc1/1-12 and then for ports fc13-24 for the next 60 seconds. Ports in the range fc4/13-14 were already enabled for analytics. Which set of commands must be used to meet these requirements?

- ☒ interface fc1/1-12
port-sampling module 4 size 12 interval 60
analytics nvme
- ☐ interface fc1/1-12
port-sampling module 4 size 12 interval 60000
analytics type fc-scsi
- ☐ analytics port-sampling module 4 size 12 interval 60000
- ☐ interface fc1/1-12
analytics fc-scsi
analytics fc-nvme
- ☐ analytics port-sampling module 4 size 12 interval 60
interface fc1/1-12
analytics type fc-nvme

- A. Option A
- B. Option B
- C. Option C
- D. Option D

Answer: D

NEW QUESTION 53

When deploying a Cisco HyperFlex edge with a pair of switches, what is the minimum number of interfaces in trunk mode required on each HX node?

- A. 1
- B. 2
- C. 4
- D. 6

Answer: B

NEW QUESTION 57

Refer to the exhibit.

```
CISCO-UCS-A# scope org /
CISCO-UCS-A /org* # create service-profile Cisc01 instance
CISCO-UCS-A /org/service-profile* # set bios-policy bios1
CISCO-UCS-A /org/service-profile* # set boot-policy boot1
CISCO-UCS-A /org/service-profile* # set ext-mgmt-ip-state none
CISCO-UCS-A /org/service-profile* # set host-fw-policy ipmi-user987
CISCO-UCS-A /org/service-profile* # set identity dynamic-uuid derived
CISCO-UCS-A /org/service-profile* # set ipmi-access-profile ipmi1
CISCO-UCS-A /org/service-profile* # set local-disk-policy local1
CISCO-UCS-A /org/service-profile* # set maint-policy maint1
CISCO-UCS-A /org/service-profile* # set mgmt-fw-policy mgmt1
CISCO-UCS-A /org/service-profile* # set power-control-policy power1
CISCO-UCS-A /org/service-profile* # set scrub-policy scrub1
CISCO-UCS-A /org/service-profile* # set sol-policy sol1
CISCO-UCS-A /org/service-profile* # set stats-policy stats1
CISCO-UCS-A /org/service-profile* # set user-label Cisco
CISCO-UCS-A /org/service-profile* # vcon-policy vconnpolicy
CISCO-UCS-A /org/service-profile* # commit-buffer
CISCO-UCS-A /org/service-profile #
```

What is a characteristic presented in the service profile of the UUID?

- A. based on the hardware
- B. vendor assigned
- C. unique system generated
- D. allocated from a UUID pool

Answer: A

Explanation:

there is no parameter for 'set identity dynamic-uuid' to specify a pool name - you can only state "derived" or a 32 hex character string (128-bits, therefore full UUID).

ucspe /org/service-profile # set identity dynamic-uuid derived Derived
FFFFFFFF-FFFF-FFFF-FFFF-FFFFFFFFFFFFFF Dynamic UUID

The documentation, as usual for Cisco, is poor. Shagua references old v1.4.1 documentation but it's the same in 4.1. It's inaccurate as uuid-pool should now read uuid-suffix-pool. You can use UCSPE to check the CLI with contextual help.

ucspe /org/service-profile # set identity dynamic-uuid Dynamic UUID dynamic-wwnn Dynamic WWNN uuid-suffix-pool UUID Suffix Pool wwnn-pool WWNN Pool
If set identity dynamic-uuid only gives us the option of a static UUID or the parameter "derived", and set identity uuid-suffix-pool is the option to assign a pool... I would suggest that the most logical answer here is

- derived from the hardware. https://www.cisco.com/en/US/docs/unified_computing/ucs/sw/cli/config/guide/1.4.1/CLI_Config_Guide_1_4_1

NEW QUESTION 61

Which configuration statically assigns VSAN membership to a virtual Fibre Channel interface?

- A. switch(config-vsan-cb)># vsan 100 bind interface fc 3/1
- B. switch<config-vsan-db># vsan 100 bind interface vfc 31
- C. switch(config-vsan-db)># vsan 100 fc 3/1
- D. switch(config-vsan-db)# vsan 100 interface vfc 31

Answer: D

Explanation:

<https://www.cisco.com/c/en/us/td/docs/switches/datacenter/nexus5000/sw/configuration/guide/cli/CLIConfigurationGuide/vsan.html>

NEW QUESTION 64

What occurs when running the command install deactivate <filename> while a software maintenance upgrade is performed on a Cisco Nexus 9000 Series switch?

- A. The current set of packages is committed.
- B. The package is removed from the switch.
- C. The package features for the line card are disabled.
- D. The current upgrade stops.

Answer: C

NEW QUESTION 68

A network engineer connects the CNA interface of a server to a switch. The switch must bring down all of the VLANs on the interface that are not enabled for FCoE, but the VLANs that are enabled for FCoE should continue to carry SAN traffic without interruption. Which configuration should be applied to the switch to achieve this objective?

- A. switch(config)# interface Ethernet 2/1 switch(config-if)# shutdown lan
- B. switch(config)# interface vfc 2 switch(config-if)# shutdown lan
- C. switch(config)# Interface Ethernet vfc 2 switch(config-if)# shutdown force
- D. switch(config)# interface Ethernet 2/1 switch(config-if)# shutdown force

Answer: A

NEW QUESTION 70

Which two statements describe modifying Cisco UCS user accounts? (Choose two.)

- A. Disabling a user account maintains all of the data in the Cisco UCS Fabric Interconnect.
- B. The admin account is used only to log on by using SSH.
- C. The password of the user account must contain a minimum of 10 characters.
- D. Local user accounts override the same account on a remote authentication server, such as TACACS, RADIUS, or LDAP.
- E. The password of the user account expires in 30 days.

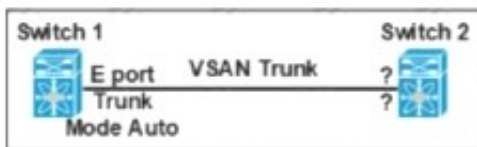
Answer: AD

Explanation:

https://www.cisco.com/c/en/us/td/docs/unified_computing/ucs/ucs-manager/GUI-User-Guides/Admin-Managem

NEW QUESTION 74

Refer to the exhibit.



Which feature must be used to configure on switch 2 to establish a VSAN trunk between switch 1 and switch 2?

- A. F portTrunk Mode Passive
- B. E PortTrunk Mode On
- C. N PortTrunk Mode Active
- D. NP PortTrunk Mode Auto

Answer: B

NEW QUESTION 79

Which two actions are needed to configure a single Cisco APIC controller for Cisco ACI fabric for the first time? (Choose two.)

- A. Register the APIC that is connected to the switch.
- B. Configure the first Cisco APIC controller
- C. Configure the leaf switch where the Cisco APIC is connected, using CLI to allow APIC connectivity
- D. Register the switches that are discovered through LLDP.
- E. Register all leaf and spine switches

Answer: AE

NEW QUESTION 84

A network engineer configures a converged network adapter (CNA) and must associate a virtual fiber Channel 7 interface to VSAN 7. The CNA connected to the interface Eth1/7, and VLAN 700 is mapped to the VSNA. Which configuration must be applied to create the virtual Fiber Channel interface and associate it with the Ethernet physical interface?

A)

```
switch(config)# vlan 700
switch(config-vlan)# fcoe vsan 7
```

B)

```
switch(config)# vsan database
switch(config-vsan)# vsan 7 interface vfc 7
```

C)

```
switch(config)# interface ethernet 1/7
switch(config-if)# vfc 7 attach vlan 1,700
```

D)

```
switch(config)# interface vfc 7
switch(config-if)# bind interface ethernet 1/7
```

- A. Option A
- B. Option B
- C. Option C
- D. Option D

Answer: D

NEW QUESTION 85

What is an advantage of NAS compared to SAN?

- A. It offers enhanced NFS features.
- B. It offers enhanced security features
- C. It functions in an existing IP environment.
- D. It provides lossless throughput.

Answer: C

NEW QUESTION 90

Refer to the exhibit.

```
Nexus# show vpc peer-keepalive | i Keepalive
--Keepalive interval : 1000 msec
--Keepalive timeout : 5 seconds
--Keepalive hold timeout : 3 seconds
--Keepalive vrf : management
--Keepalive udp port : 3200
--Keepalive tos : 192

Nexus# ethanalyzer local interface mgmt limit-captured-frames 1000

Capturing on mgmt0
2019-06-15 12:01:51.242597 192.168.254.11 -> 192.168.254.3 ICMP Echo (ping) request
2019-06-15 12:01:51.242860 192.168.254.3 -> 192.168.254.11 ICMP Echo (ping) reply
2019-06-15 11:50:15.975474 192.168.254.1 -> 192.168.254.3 TCP 47540 > bootps [SYN] Seq=0 Win=1024 Len=0 MSS=1460
2019-06-15 11:50:15.975547 192.168.254.3 -> 192.168.254.1 TCP 29 > 47540 [RST, A CK] Seq=1 Ack=1 Win=0 Len=0
2019-06-15 11:50:15.975564 192.168.254.1 -> 192.168.254.3 TCP 47540 > 44 [SYN] Seq=0 Win=1024 Len=0 MSS=1460
2019-06-15 11:50:15.975924 192.168.254.1 -> 192.168.254.3 TCP 47540 > discard [SYN] Seq=0 Win=1024 Len=0 MSS=1460
2019-06-15 11:50:15.976027 192.168.254.1 -> 192.168.254.3 TCP 47540 > 97 [SYN] Seq=0 Win=1024 Len=0 MSS=1460
2019-06-15 11:50:15.976381 192.168.254.1 -> 192.168.254.3 TCP 47540 > 35 [SYN] Seq=0 Win=1024 Len=0 MSS=1460
2019-06-15 11:50:16.661845 192.168.254.3 -> 192.168.254.4 UDP Source port: 3200 Destination port: 3200
2019-06-15 11:50:16.761147 00:8e:73:a2:41:13 -> 01:80:c2:00:00:00 STP Conf. Root = 8192/10/ec:e1:a9:df:6c:80 Cost = 22 Port = 0x8013
2019-06-15 11:50:16.853248 192.168.254.4 -> 192.168.254.3 UDP Source port: 3200 Destination port: 3200
2019-06-15 11:50:17.326253 192.168.254.1 -> 192.168.254.3 SSH Encrypted request packet len=52
2019-06-15 11:50:17.327313 192.168.254.3 -> 192.168.254.1 SSH Encrypted response packet len=1348
2019-06-15 11:50:17.377246 192.168.254.4 -> 239.255.70.83 UDP Source port: 7546 Destination port: 7546
2019-06-15 11:50:17.552215 192.168.254.1 -> 192.168.254.3 TCP 14139 > ssh [ACK] Seq=365 Ack=11277 Win=63546 Len=0
2019-06-15 11:50:17.661764 192.168.254.3 -> 192.168.254.4 UDP Source port: 3200 Destination port: 3200
2019-06-15 11:50:17.653242 192.168.254.4 -> 192.168.254.3 UDP Source port: 3200 Destination port: 3200
2019-06-15 11:50:17.872637 8c:60:4f:aa:c2:e1 -> 01:80:e7:00:00:0e LLDP Chassis : d = 8c:60:41:aa:c2:e1 Port Id = mgmt0 TTL = 120
2019-06-15 11:50:08.173056 192.168.256.3 -> 192.168.254.2 NTP NTP client
2019-06-15 11:50:08.173256 192.168.256.2 -> 192.168.254.3 NTP NTP server
```

A flapping link issue has been reported on the vPC keepalive link. A packet capture has been activated on the Cisco Nexus switch. What is the destination IP address of the vPC keepalive packets that are sent by the switch?

- A. 192.168.254.4
- B. 239.255.70.83
- C. 192.168.254.1
- D. 192.168.254.2

Answer: A

Explanation:

<https://www.cisco.com/c/en/us/td/docs/switches/datacenter/nexus3000/sw/interfaces/92x/b-cisco-nexus-3000-nx>

NEW QUESTION 91

A cisco Nexus 9000 series switch experiences a startup configuration corruption. The engineer must implement a procedure to recover configuration file from the switch. Which command set must be used?

- A. * 1. Copy the running-configuration to the startup configuration.* 2. Clear the current configuration of the switch.* 3. Restart the device.* 4. Copy a previously saved configuration file to the running configuration.
- B. * 1. Clear the current configuration of the switch* 2. Restart the device.* 3. Copy the running configuration to the startup configuration* 4. Copy a previously saved configuration file to the running configuration
- C. * 1. Clear the current configuration of the switch* 2. Restart the device.* 3. Copy a previously saved configuration file to the running-configuration* 4. Copy the running-configuration to the startup configuration.
- D. * 1.Restarting device.* 2. Copy the running-configuration file to a remote server.* 3. Clear the current configuration of the switch.* 4. Copy the running configuration to the startup configuration

Answer: C

Explanation:

Problems, such as memory corruption, can occur that make it necessary for you to recover your configuration from a backed-up version.

Each time that you enter a copy running-config startup-config command, a binary file is created and the ASCII file is updated. A valid binary configuration file reduces the overall boot time significantly. A binary file cannot be uploaded, but its contents can be used to overwrite the existing startup configuration. The write erase command clears the binary file.

SUMMARY STEPS

- * 1. write erase
- * 2. reload
- * 3. copy configuration-file running-configuration
- * 4. copy running-config startup-config <https://www.cisco.com/c/en/us/td/docs/switches/datacenter/nexus9000/sw/93x/fundamentals/configuration/guide>

NEW QUESTION 92

An engineer must perform a backup operation of the Cisco UCS system. The backup must be transferred to a secure location using UDP and must contain information about VLANs, VSANs, and other policies. Also, the operations team requires the backup file to be in a human-readable format. Which configuration set meets these requirements?

- A. Type: System configuration Protocol: SCP
- B. Type: Logical configuration Protocol: TFTP
- C. Type: All configuration Protocol: FTP
- D. Type: Full state Protocol: SFTP

Answer: B

NEW QUESTION 94

A customer deploys a media server to distribute streaming videos to network clients. The requirement is to allow the video feed to reach only requesting clients. The shared trees must not propagate the video feed if no clients from that tree request it. To reduce configuration touchpoints, the solution must support the automatic discovery and announcement of RP-set information. Each router in the network is responsible for selecting the RP. Which configuration set meets these requirements?

A)

```
router(config-if)# ip pim bidir-enable
router(config)# ip pim ssm default
router(config)# ip igmp version 3
```

B)

```
router(config-if)# ip pim dense-mode
router(config)# ip pim rp-address 1.1.1.1
router(config)# ip pim rp listener
```

C)

```
router(config-if)# ip pim sparse mode
router(config)# ip pim bsr-candidate Lo0
router(config)# ip pim rp-candidate Lo0
```

D)

```
router(config-if)# ip pim sparse-sense mode
router(config)# ip pim auto-rp
router(config)# ip pim send-rp-announce
```

- A. Option A
- B. Option B
- C. Option C
- D. Option D

Answer: D

NEW QUESTION 99

An engineer needs to connect Cisco UCS Manager to an external storage array. Due to budget limitations, the engineer must connect a Cisco UCS manager directly to an FC storage port. Which two actions must be taken to complete this connection? (Choose two)

- A. Configure the fabric interconnect in FC switch mode
- B. Create a storage connection policy
- C. Set FC zoning to disabled when creating the VSAN
- D. Configure the fabric interconnect in end host mode
- E. Create the required VSAN in the SAN cloud

Answer: AC

NEW QUESTION 101

Refer to the exhibit.

```
N5K-1 (config)#interface fc2/3
N5K-1 (config-if)#switchport mode sd
N5K-1 (config-if)# no shutdown
```

What is the result of implementing this configuration?

- A. The Fibre Channel interface is configured for synchronization distribution.
- B. The Fibre Channel interface is configured for SPAN.
- C. The Fibre Channel interface is configuration for source distribution.
- D. The Fibre Channel interface is configured for FSPF.

Answer: B

Explanation:

https://www.cisco.com/c/en/us/td/docs/switches/datacenter/nexus5000/sw/san_switching/421_n1_1/b_Cisco_n5k_nxos_sanswitching_config_guide_rel421_n1_1/Cisco_n5k_nxos_sanswitching_config_guide_rel421_n1_1/Cisco_Nexus_5000_Series_Switch_CLI_Software_Configuration_Guide_chapter50.html

NEW QUESTION 102

A network engineer is configuring the Cisco UCS service profile template with Ansible using this code.

```
hostname: 192.168.10.23
username: cisco
password: f718c4329405088301f6247ff982
name: DCE-CTRL
template_type: updating-template
uuid_pool: UUID-POOL
storage_profile: DCE-StgProf
maintenance_policy: default
server_pool: Container-Pool
host_firmware_package: 4.1(1a)
bios_policy: Docker
```

Which attribute must be used to apply the iSCSI initiator identifiers to all iSCSI vNICs for the service profiles derived from the service template?

- A. san_connectivity_policy
- B. iqn_pool
- C. boot_policy
- D. lan_connectivrtty_policy

Answer: B

NEW QUESTION 103

An engineer is implementing Cisco Intersight in a secure environment. The environment must use LDAP directory service and ensure information integrity and confidentiality. Which two steps must be taken to implement the solution? (Choose two.)

- A. Enable Encryption for LDAP
- B. Add a self-signed LDAP certificate to Cisco Intersight.
- C. Enable Certificate Signing Request in Cisco Intersight.
- D. Add a trusted root LDAP certificate to Cisco Intersight
- E. Add a trusted OAuth token to Cisco Intersight

Answer: AD

Explanation:

Find Matches in This Book

Step 3 On the **Configure LDAP** page, add the corresponding details in the fields that are listed below, and click **Save**.

- **Name**—Enter a name to easily identify the LDAP domain that you are configuring.
- **Base DN**—Enter a Base Distinguished Name (DN) for the server. For example, DC=Intersight, DC=com.
- **Bind DN**—Enter a DN used to authenticate against LDAP server and the password for the user.
- **Group Attribute**—Enter the Group member attribute to which an LDAP entry belongs. Cisco Intersight Virtual Appliance uses this Group attribute to map/assign Intersight roles to the user. The default value is **member** and you can change it from **Edit LDAP** settings.
- **Password**—Enter a DN password for the user.
- **Enable Encryption**—You must enable Encryption to secure the communication over the LDAP server. If encryption is enabled, a trusted root certificate has to be added. For more information, see *Adding Certificates*.
- **In Server**—Add an LDAP Server IP address or hostname. Cisco Intersight Virtual Appliance supports only one LDAP provider and port.

Attention

- LDAPS is supported on Port 636 and Port 3269. All other ports support LDAP on TLS.
- Cisco Intersight Virtual Appliance uses the email ID or username to log in an LDAP user. If you want to use email ID to log in to the appliance, configure the mail attribute in the LDAP server. If you want to use the username, use the sAMAccountName configured for that user in the LDAP server.
- After you add the required details to configure LDAP settings, wait for the DeployApplianceLDAP workflow to complete before you add User or Group to assign appropriate roles to LDAP users. You can

https://www.cisco.com/c/en/us/td/docs/unified_computing/Intersight/b_Cisco_Intersight_Appliance_Getting_Started_Guide/b_Cisco_Intersight_Appliance_Install_and_Upgrade_Guide_chapter_0110.html

NEW QUESTION 106

An engineer must create a scheduler configuration to create two backup jobs per day. The backup file must be copied to a server in the operations VRF. Which configuration accomplishes this task?

A)

```
scheduler schedule name CNFGBACKUP
job name BACKUP-JOB
copy running-config tftp://10.19.11.12/$(SWITCHNAME)-$(TIMESTAMP).cfg vrf operations
time start now repeat 12:00
```

B)

```
scheduler schedule name CNFGBACKUP
job name BACKUP-JOB
show tech-support | redirect vrf operations tftp://10.19.11.12/$(SWITCHNAME)-$(TIMESTAMP).cfg
time start daily 12:30 0:30
```

C)

```
scheduler schedule name CNFGBACKUP
job name BACKUP-JOB
copy startup-config tftp://10.19.11.12/$(SWITCHNAME)-$(TIMESTAMP).cfg
time daily 12:30 0:30
```

D)

```
scheduler schedule name CNFGBACKUP
job name BACKUP-JOB
copy vrf operations config tftp://10.19.11.12/$(SWITCHNAME)-$(TIMESTAMP).cfg
time start 12:30 repeat 12
```

A. Option A

B. Option B

C. Option C

D. Option D

Answer: A

NEW QUESTION 107

An engineer must configure a Nexus 7000 series switch for HSRP on VLAN 100. When fully functional, the router must be the active master. Which set of commands must be used to implement the scenario?

- ☐ feature hsrp
interface vlan100
ip address 10.1.1.2 255.255.255.0
priority 120
hsrp version 2
hsrp 1000
ip 10.1.1.1
- ☐ feature hsrp
interface vlan100
ip address 10.1.1.2 255.255.255.0
priority 100
hsrp version 2
hsrp 1000
ip 10.1.1.1
- ☐ feature-set hsrp
interface vlan100
ip address 10.1.1.2 255.255.255.0
priority 110
hsrp version 2
hsrp 1000
ip 10.1.1.1
- ☐ feature-set hsrp
interface vlan100
ip address 10.1.1.2 255.255.255.0
priority 80
hsrp version 2
hsrp 1000
ip 10.1.1.1

- A. Option A
- B. Option B
- C. Option C
- D. Option D

Answer: A

NEW QUESTION 110

What is required for using Ansible with HTTP/HTTPS protocol in a Cisco NX-OS environment?

- A. SSH
- B. Open Agent Container
- C. XML management interface
- D. NX-API

Answer: D

Explanation:

https://docs.ansible.com/ansible/2.5/modules/nxos_nxapi_module.html https://docs.ansible.com/ansible/latest/network/user_guide/platform_nxos.html

NEW QUESTION 113

AN engineer is asked to modify an overridden policy by changing the number of FCNS database entries to 1500 and then generate a message. What configuration will accomplish this task?

- ☐ A. event manager applet fcns_policyevent fens entries max-per-switch 1500
action 1.0 syslog priority warnings msg FCNS DB entries have reached the EEM limit
action 2.0 policy-default
- ☐ B. event manager applet fcns_policy override _fcns_entries_max_per_switch
action 1.0 syslog priority errors "CNS DB entries have reached the EEM limit"
action 2.0 policy-default
- ☐ C. event manager applet fcns_policy override _fcns_entries_max_per_switch
event fens entries max-per-switch 1500
action 1.0 syslog priority warnings msg FCNS DB entries have reached the EEM limit
- ☐ D. event manager applet fcns_policy action 1.0 syslog priority warnings msg FCNS DB entries have reached the EEM limit
action 2.0 event-default

- A. Option A
- B. Option B
- C. Option C
- D. Option D

Answer: C

Explanation:

The following example modifies an overridden policy by changing the number of FCNS database entries to 1500. It also generates both the configured and the default syslog messages of the default system policy event manager applet fcns_policy override fcns_entries_max_per_switch event fcns entries max-per-switch 1500 action 1.0 syslog priority warnings msg FCNS DB entries have reached the EEM limit.

NEW QUESTION 117

What is a benefit of using Cisco Tetration?

- A. It collects telemetry data from servers and then uses software sensors to analyze flow information.
- B. It collects near-real time data from servers and inventories the software packages that exist on servers.
- C. It collects policy compliance data and process details.
- D. It collects enforcement data from servers and collects interpacket variation.

Answer: A

NEW QUESTION 119

An environment consists of a Cisco MDS 9000 Series Switch that uses port channels. An engineer must ensure that frames between the source and the destination follow the same links for a specific flow. Subsequent flows are allowed to use a different link Which load balancing method should be used to accomplish this goal?

- A. src-id/dst-id
- B. src-dst-oui
- C. src-dst-port
- D. src-id/dst-id/oxid

Answer: D

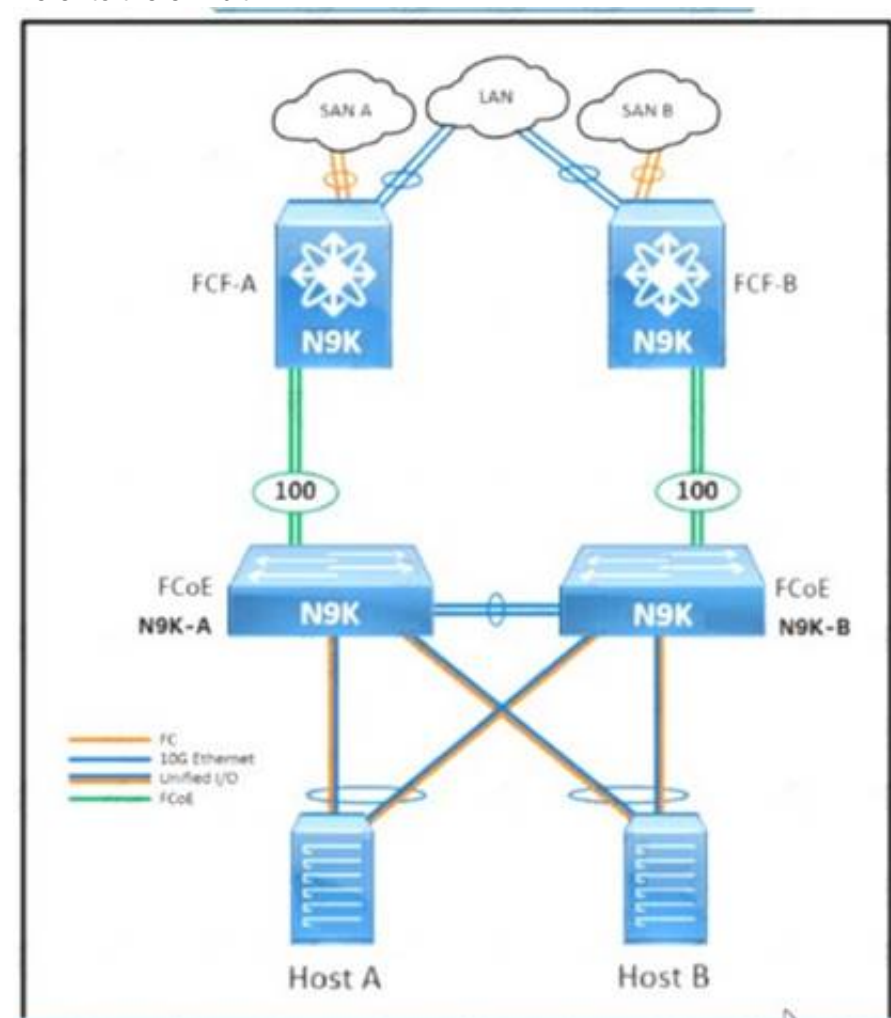
Explanation:

Exchange based—The first frame in an exchange picks a link and subsequent frames in the exchange follow the same link. However, subsequent exchanges can use a different link. This provides more granular load balancing while preserving the order of frames for each exchange. Source:

https://www.cisco.com/c/en/us/td/docs/switches/datacenter/mds9000/sw/5_0/configuration/guides/int/nxos/cli_i Load balancing attributes indicate the use of the source-destination ID (src-dst-id) or the originator exchange OX ID (src-dst-ox-id, the default) for load balancing path selection. Source: https://www.cisco.com/c/en/us/td/docs/switches/datacenter/mds9000/sw/6_2/configuration/guides/fabric/nx-os/n
https://www.cisco.com/en/US/docs/storage/san_switches/mds9000/sw/rel_1_x/1_3/san-os/configuration/guide/P

NEW QUESTION 124

Refer to the exhibit.



An engineer must configure FCoE between the N9K-A switch and the FCF-A Nexus 9000 core switch. The deployment has these characteristics:

- The N9K-A and N9K-B top-of-rack switches share the domain ID of the core switches.
- The hosts are equipped with converged network adapters.
- The only VSAN that is permitted to traverse port-channel 100 is VSAN 20. Which configuration completes the FCoE configuration on the N9K-A device?

- ☐ N9K-A(config)# feature fcoe
N9K-A(config)# feature npv
N9K-A(config)# interface vfc 100
N9K-A(config-if)# bind interface port-channel 100
N9K-A(config-if)# switchport mode F
N9K-A(config-if)# switchport trunk allowed vsan 20
- ☐ N9K-A(config)# feature fcoe
N9K-A(config)# feature npv
N9K-A(config)# interface vfc 100
N9K-A(config-if)# bind interface port-channel 100
N9K-A(config-if)# switchport mode N
N9K-A(config-if)# switchport trunk allowed vsan 1, 20
- ☐ N9K-A(config)# feature-set fcoe-npv
N9K-A(config)# interface vfc-port-channel 100
N9K-A(config-if)# switchport mode NP
N9K-A(config-if)# switchport trunk allowed vsan 20
- ☐ N9K-A(config)# feature-set fcoe-npv
N9K-A(config)# interface vfc-port-channel 100
N9K-A(config-if)# switchport mode E
N9K-A(config-if)# switchport trunk allowed vsan 1, 20

- A. Option A
- B. Option B
- C. Option C
- D. Option D

Answer: C

NEW QUESTION 127

A customer reports Fibre Channel login requests to a cisco MDS 9000 series Switch from an unauthorized source. The customer requires a feature that will allow all devices already logged in and learned in and learned to be added to the Fibre channel active database. Which two features must be enabled to accomplish this goal?

(Choose two.)

- A. Auto-learning
- B. Port security
- C. Enhanced zoning
- D. Device aliases
- E. Smart aliases

Answer: AB

Explanation:

https://www.cisco.com/en/US/docs/storage/san_switches/mds9000/sw/rel_3_x/configuration/guides/fm_3_3_1/p Port Security Activation By default, the port security feature is not activated in any switch in the Cisco MDS 9000 Family. By activating the port security feature, the following apply: Auto-learning is also automatically enabled, which means: From this point, auto-learning happens for the devices or interfaces that were already logged into the switch and also for the new devices will login in future. You cannot activate the database until you disable auto-learning. All the devices that are already logged in are learned and are added to the active database. All entries in the configured database are copied to the active database. After the database is activated, subsequent device login is subject to the activated port bound WWN pairs, excluding the auto-learned entries. You must disable auto-learning before the auto-learned entries become activated.

NEW QUESTION 130

Refer to the exhibit.

```
#!/bin/env python
from cli import *

[redacted]

x= cli('show running-config | include address')
y= x.find('192.168.101.191/25')
z= x.find('192.168.101.192/25')
if y != -1:
    cli ('copy tftp://192.168.101.253/initdev1.cfg bootflash: vrf management')
    cli ('copy bootflash:initdev1.cfg scheduled-config')
if z != -1:
    cli ('copy tftp://192.168.101.253/initdev2.cfg bootflash: vrf management')
    cli ('copy bootflash:initdev2.cfg scheduled-config')
cli ('copy running-config startup-config')
```

Which information must be added to the script to complete the POAP operation on the Cisco Nexus 9000 Series Switch?

- ☐ API token d41d8cd98f00b40960045298ecf8427e of the Cisco APIC.
- ☐ MD5SUM 41d8cd98f00b204e9800998ecf8427e of the Python code.
- ☒ API token d41d8cd98f00b77986331998ecf8427e of the Cisco Nexus 9000 Series Switch.
- ☐ MD5SUM d41d8cd98f00b20449800998ecf8427e of the script file.

- A. Option A
- B. Option B
- C. Option C
- D. Option D

Answer: D

NEW QUESTION 135

Refer to the exhibit.

```
restart pim
```

Which result of running the command is true?

- A. The PIM database is deleted.
- B. Multicast traffic forwarding is suspended.
- C. PIM join messages are suspended.
- D. MRIB is flushed

Answer: A

Explanation:

When you restart PIM, the following tasks are performed: The PIM database is deleted. The MRIB and MFIB are unaffected and forwarding of traffic continues. The multicast route ownership is verified through the MRIB. Periodic PIM join and prune messages from neighbors are used to repopulate the database.
https://www.cisco.com/c/en/us/td/docs/switches/datacenter/nexus9000/sw/6-x/multicast/configuration/guide/b_C

NEW QUESTION 140

An engineer is implementing a Cisco ACI fabric and must use static VLAN range as part of a VMM deployment. The static VLAN must be incorporated into the dynamic VLAN pool. The existing VLAN pool is set for dynamic allocation. Which action accomplishes this goal?

- A. Add the VLAN to the pool configured with Inherit Allocation Mode from parent.
- B. Change the existing VLAN pool to static allocation mode.
- C. Add a static VLAN allocation range to the VLAN pool.
- D. Create a static reservation within the dynamic VLAN pool.

Answer: C

NEW QUESTION 142

A network architect considers a Cisco HyperFlex design solution for a company. The proposed solution is for a virtual environment that is not performance-sensitive, but the solution must have high storage capacity and a low cost. Which Cisco HyperFlex storage configuration should be used?

- A. All-Flash
- B. Hybrid
- C. All-SAN
- D. All-NVMe

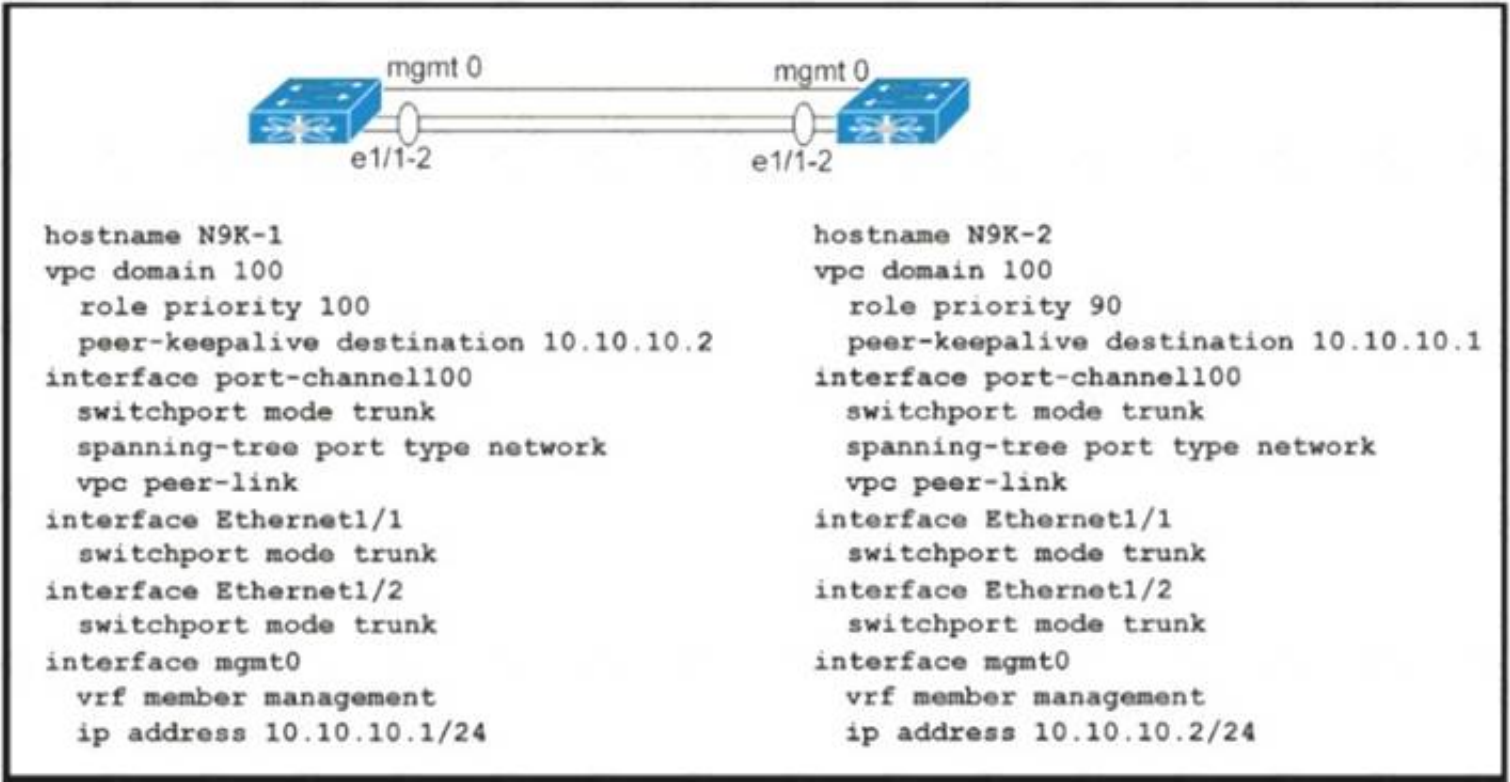
Answer: B

Explanation:

<https://www.cisco.com/c/en/us/products/collateral/hyperconverged-infrastructure/hyperflex-hx-series/white-pap> Hybrid contains HDD for capacity.

NEW QUESTION 144

Refer to the exhibit.



Which action completes the vPC domain implementation?

- A. Allow VLANs on the vPC peer link member interfaces.
- B. Include the VRF management on the vPC domain.
- C. Configure the system MAC on the vPC domain.
- D. Add the vPC member ports to the vPC channel group.

Answer: D

NEW QUESTION 146

Drag and drop the keywords onto the URL request to collect all the subnets configured under tenant Production using a REST API. Not all options are used.

https://{apic_ip}/api/

/uni/tn-Production.json?

=

&

=fvSubenet

target-subtree-class

query-target-filter

query-target

children

subtree

class

mo

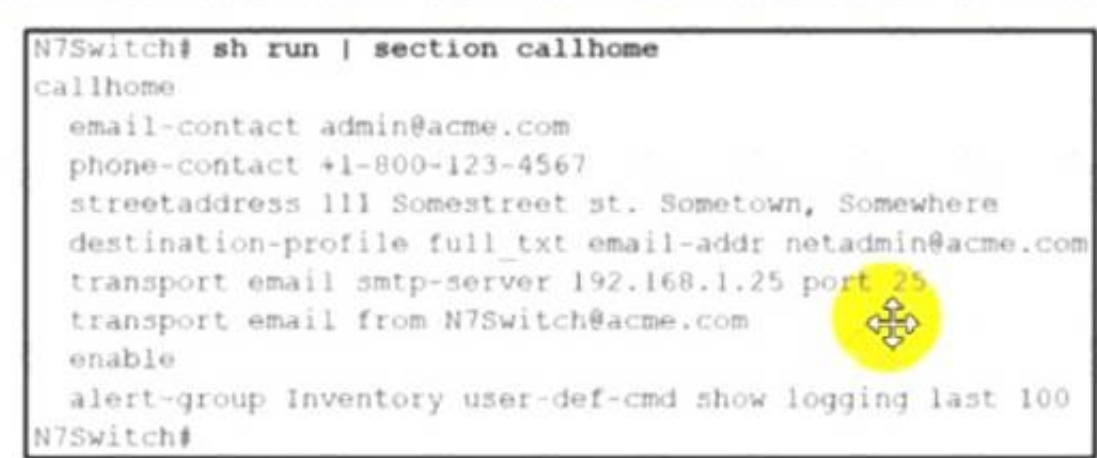
- A. Mastered
- B. Not Mastered

Answer: A

Explanation:
 Graphical user interface, text Description automatically generated

NEW QUESTION 148

Refer to the exhibit.



A network engineer is configuring the Smart Call Home feature on a Cisco Nexus Series Switch. An email must be generated that contains the last 100 lines of the

log every time a new piece of hardware is inserted into the chassis. Which command must be added to the configuration to receive the email?

- A. alert-group Linecard-Hardware user-def-cmd show logging last 100
- B. destination-profile Operations alert-group Inventory
- C. destination-profile Operations message-level 2
- D. alert-group Operations user-def-cmd show logging last 100

Answer: A

NEW QUESTION 151

An engineer must implement the FCoE on the Cisco Nexus 9000 Series Switch-based infrastructure. The deployment will contain dual-homed fabric extenders and must support jumbo frames with port channels. Which two sets of actions complete the configuration? (Choose two.)

- ☒ Configure the interface with mtu 9516.
Disable the feature NPIV.
- ☒ Create a virtual Fibre Channel interface.
Bind vFC to physical interface.
- ☐ Create a FCoE switch profile.
Enable config sync.
- ☐ Create a dedicated VSAN for FEX.
Bind VSAN to FEX uplinks.
- ☐ Execute fcoe enable-fex.
Configure FEX uplinks with mtu 9216.

- A. Option A
- B. Option B
- C. Option C
- D. Option D
- E. Option E

Answer: BE

NEW QUESTION 156

An engineer needs to connect Cisco UCS Fabric Interconnect (FI) to an external storage array. Due to budget limitations, the engineer must connect a Cisco UCS FI directly to an FC storage port. Which two actions must be taken to complete this connection? (Choose two.)

- A. Configure the fabric interconnect in FC switch mode.
- B. Set FC zoning to disabled when creating the VSAN
- C. Create a storage connection policy.
- D. Configure the fabric interconnect in end-host mode,
- E. Create the required VSAN in the SAN cloud.

Answer: AE

NEW QUESTION 159

A Cisco ACI engineer must configure an access port on a Cisco ACI leaf switch. The access policy should be configured so that it supports L3out connectivity concurrently with several EPGs that are mapped to this interface with the static port method. How should the access policy be configured?

- A. by linking the interface policy group to multiple Attachable Access Entity Profiles
- B. with a single Attachable Access Entity Profile that is linked to the corresponding routed domain and physical domain
- C. with two interface policy groups that are linked to the same interface profile port selector
- D. by mapping a single physical domain, mapped to the L3out and EPG interfaces

Answer: D

NEW QUESTION 162

Which data interchange format is presented in this output?

```
{
  "totalCount": "1",
  "imdata": [
    {
      "fabricNode": {
        "attributes": {
          "address": "10.0.40.65",
          "apicType": "apic",
          "dn": "topology/pod-1/node-201",
          "id": "201",
          "lastStateModTs": "2020-09-07T10:20:57.236+00:00",
          "modTs": "2020-09-07T10:21:18.912+00:00",
          "model": "N9K-C9336PQ",
          "monPolDn": "uni/fabric/monfab-default",
          "role": "spine",
          "serial": "FDO39106329J",
          "uid": "0",
          "vendor": "Cisco Systems, Inc",
        }
      }
    }
  ]
}
```

- A. XML
- B. YAML
- C. JSON
- D. CSS

Answer: C

NEW QUESTION 165

An engineer must start a software upgrade on a Cisco Nexus 5000 Series Switch during a zone merge. What is the result of this action?

- A. The zone merge stops.
- B. The zone merge pauses until the upgrade completes
- C. The upgrade stops
- D. The zone merge executes and then the upgrade completes.

Answer: C

Explanation:

https://www.cisco.com/c/en/us/td/docs/switches/datacenter/nexus5500/sw/upgrade/602_N2_2/n5500_upgrade_d

The specific requirements for a nondisruptive upgrade (ISSU) are as follows:

- Topology requirements— A Cisco Nexus device on which an ISSU is being initiated should not be in one of the unsupported topologies listed in the previous figure. No interface should be in a spanning-tree designated forwarding state. Also, do not configure Bridge Assurance on any interface of the Cisco Nexus device. vPC peer-link is an exception to these requirements.
- Layer 2 requirement— The ISSU process aborts if the system has any Link Aggregation Control Protocol (LACP) fast timers configured.
- FC/FCoE requirements—Check that the topology is stable for an ISSU to work correctly. You must check the following:
 - Domain Manager—As part of the installation process, domain manager checks if the fabric is in a stable state. If the fabric is not stable, the installation aborts.
 - CFS—As part of the installation process, Cisco Fabric Services (CFS) checks if any application (ntp.fsm, rcsn, fctime) is locked. If any application is holding a CFS lock, the installation aborts.
 - Zone Server— The installation process aborts if a zone merge or zone change request is in progress.
 - FSPF—As part of the upgrade process, Fabric Shortest Path First (FSPF) verifies if the configured interface dead interval is more than 80 seconds; otherwise, the installation aborts.

NEW QUESTION 168

The VMM domain is integrated between Cisco APICs and vCenter using a distributed vSwitch. The traffic must be blocked between a subset of endpoints in an EPG based on specific VM attributes and the rest of the VMs in that EPG. Which set of actions blocks this traffic?

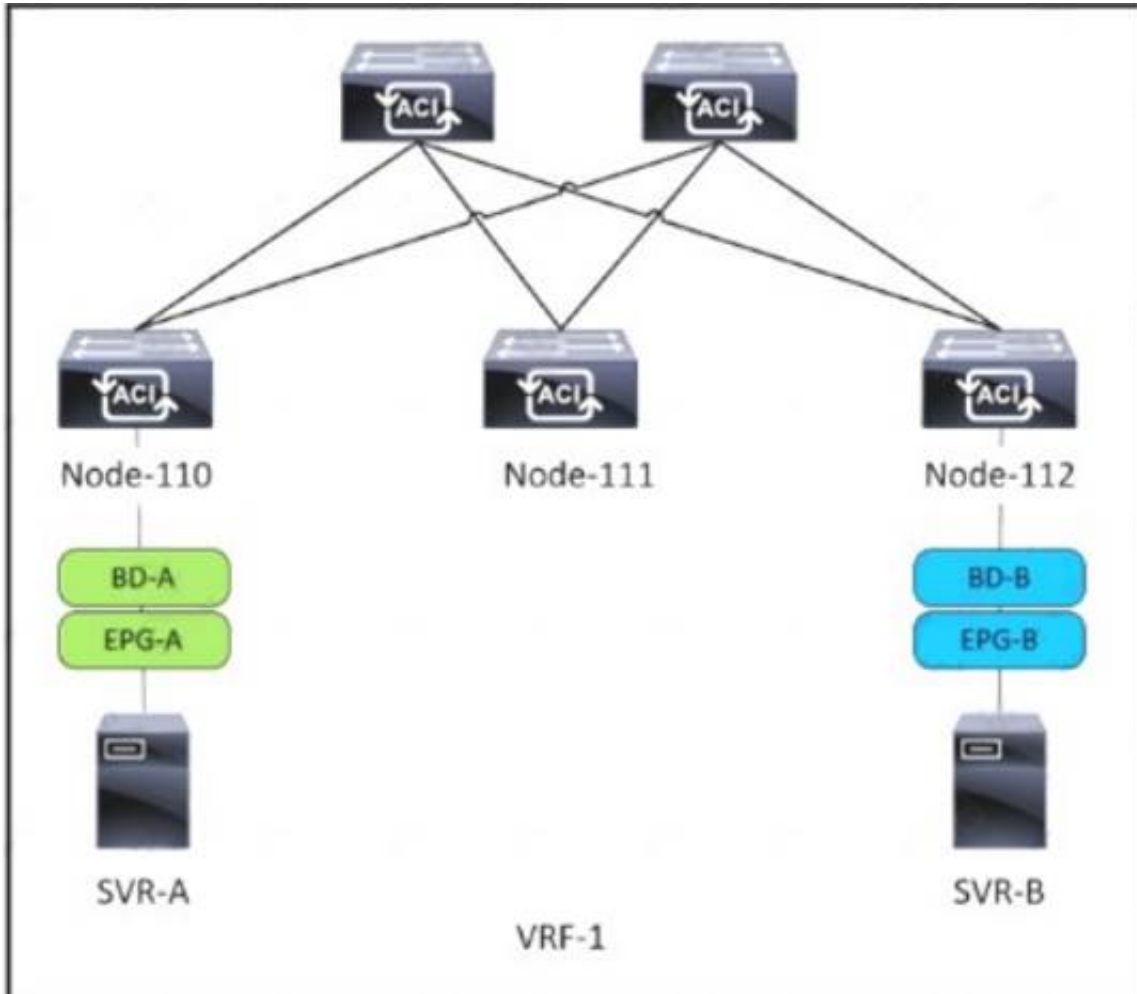
- ☒ 1. Set Allow Microsegmentation under the EPG VMM Domain Association to "True"
 2. Set Intra-EPG Isolation to "Enforced" for the EPG
 3. Set Intra-EPG Isolation to "Enforced" for the uSeg EPG
- ☐ 1. Set Allow Microsegmentation under the EPG VMM Domain Association to "True"
 2. Set Intra-EPG Isolation to "Unenforced" for the EPG
 3. Set Intra-EPG Isolation to "Unenforced" for the uSeg EPG
- ☐ 1. Set Allow Microsegmentation under the EPG VMM Domain Association to "False"
 2. Set Intra-EPG Isolation to "Unenforced" for the EPG
 3. Set Intra-EPG Isolation to "Enforced" for the uSeg EPG
- ☐ 1. Set Allow Microsegmentation under the EPG VMM Domain Association to "True"
 2. Set Intra-EPG Isolation to "Enforced" for the EPG
 3. Set Intra-EPG Isolation to "Unenforced" for the uSeg EPG

- A. Option A
- B. Option B
- C. Option C
- D. Option D

Answer: A

NEW QUESTION 170

Refer to the exhibit.



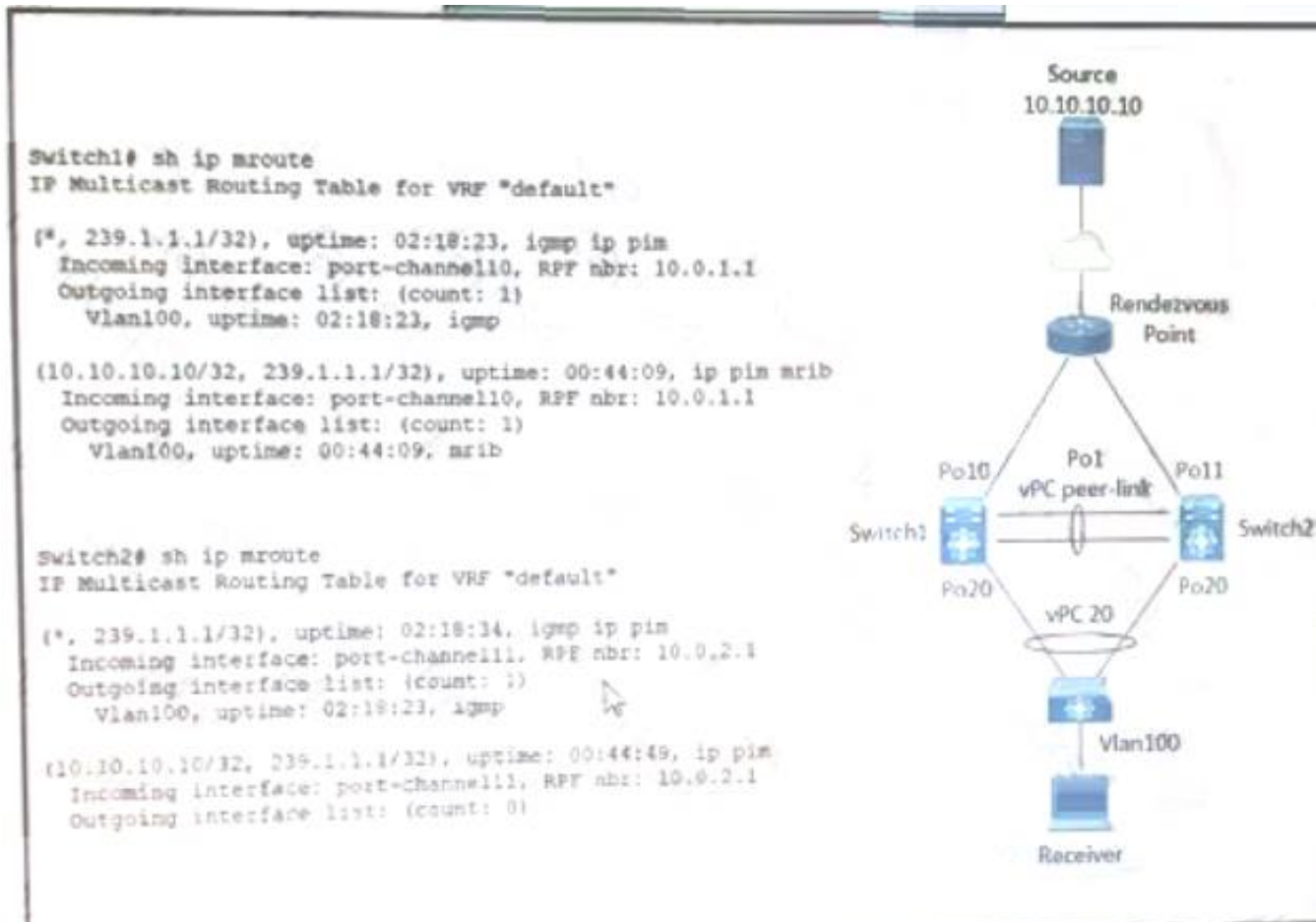
SVR-A in EPG-A/BD-A fails to reach SVR-B in EPG-B/BD-B. Which two conditions should be verified to analyze the traffic between the two EPGs? (Choose two.)

- A. A contract exists between EPG-A and EPG-B and allows the traffic.
- B. Limit Endpoint Learning is disabled on the bridge domain for EPG-B.
- C. SVR-B is learned as an endpoint in EPG-B from Node-112.
- D. EPG-A and EPG-B are excluded from the preferred group.
- E. The bridge domain for EPG-B floods ARP packets.

Answer: AC

NEW QUESTION 174

Refer to the exhibit.



A host with source address 10.10.10.10. sends traffic to multicast group 239.1.1.1. how do the vPC switches forward the multicast traffic?

- A. If multicast traffic is received on Po11 Switch2, the traffic is forwarded out only one Po20.
- B. If multicast traffic is received on Po10 Switch1, the traffic is forwarded out on Po1 and Po20.
- C. If multicast traffic is received on Po11 and Switch2, the traffic is dropped.
- D. If multicast traffic is received on Switch over the vPC peer-link, the traffic is dropped.

Answer: C

Explanation:

<https://www.cisco.com/c/en/us/support/docs/ip/multicast/214140-multicast-forwarding-in-vpc-based-on-loc.htm>

NEW QUESTION 179

What is a characteristic of the install all command on the cisco Nexus series switch?

- A. Upgrades only certain modules
- B. Automatically checks the image integrity
- C. Impact data plan traffic
- D. Continues the upgrade process if any step in the sequence fails

Answer: B

Explanation:

https://www.cisco.com/c/en/us/td/docs/switches/datacenter/nexus9000/sw/7-x/upgrade/guide/b_Cisco_Nexus_9000_Series_NX-OS_Software_Upgrade_and_Downgrade_Guide_Release_7x/b_Cisco_Nexus_9000_Series_NXOS_Software_Upgrade_and_Downgrade_Guide_Release_7x_chapter_010.html

install all command automatically checks the image integrity, which includes the NXOS software image. The command performs a platform validity check to verify that a wrong image is not used. https://www.cisco.com/c/en/us/td/docs/switches/datacenter/nexus3000/sw/upgrade/7_x/b_Cisco_Nexus_3000_S

NEW QUESTION 180

Which data structure results from running this Python code?

```
>>> import json
>>> f = open('fname.json', 'r')
>>> var1 = json.load(f)
>>> var1
{'u'bd': u'bd1', u'ap': {u'epgs': [{u'name': u'app'}, {u'name': u'web'}, {u'name': u'db'}], u'name': u'OnlineStore'}, u'name': u'39106329', u'pvn': u'pvn1'}
```

- A. Set
- B. Tuple
- C. Dictionary
- D. List

Answer: A

NEW QUESTION 181

A network engineer must perform a backup and restore of the Cisco Nexus 5000 Series Switch configuration. The backup must be made to an external backup server. The only protocol permitted between the Cisco Nexus Series switch and the backup server is UDP. The backup must be used when the current working configuration of the switch gets corrupted. Which set of steps must be taken to meet these requirements?

- A. 1. Perform a running-config backup to an SFTP serve
- B. 2. Copy backup-config from the SFTP server to the running-config file.
- C. 1. Perform a startup-config backup to a TFTP serve
- D. 2. Copy backup-config from the backup server to the running-config file.
- E. 1. Perform a running-config backup to an SCP serve
- F. 2. Copy running-config in the boot flash to the running-config file.
- G. 1. Perform a startup-config backup to an FTP serve
- H. 2. Copy startup-config in the boot flash to the running-config file.

Answer: B

Explanation:

TFTP runs on UDP 69 = Is correct

NEW QUESTION 186

An engineer needs to make an XML backup of Cisco UCS Manager The backup should be transferred using an authenticated and encrypted tunnel and it should contain all system and service profiles configuration Which command must be implemented to meet these requirements?

- ☐ create file scp://user@host35/backups/all-config9.bak all-configuration
- ☐ copy startup-config scp://user@host35/backups/all-config9.bak all-configuration
- ☒ create backup scp://user@host35/backups/all-config9.bak all-configuration
- ☐ copy running-config scp://user@host35/backups/all-config9.bak all-configuration

- A. Option A
- B. Option B
- C. Option C
- D. Option D

Answer: C

Explanation:

https://www.cisco.com/en/US/docs/unified_computing/ucs/sw/cli/config/guide/1.4.1/CLI_Config_Guide_1_4_1
The following example creates a disabled all-configuration backup operation for hostname host35 and commits the transaction:

```
UCS-A# scope system
UCS-A /system* # create backup scp://user@host35/backups/all-config9.bak all-configuration disabled
Password:
UCS-A /system* # commit-buffer
UCS-A /system #
```

NEW QUESTION 188

A new user with access privileges in the Finance department moves to a new Admin department. The user must have access privileges to the Admin department data and applications inside the Cisco UCS Manager Which set of changes must be implemented in Cisco UCS Central for the user to acquire the privileges?

- A. Create an Admin user account and remove the authentication service for the Finance privileges.
- B. Disable the Finance user account and add the authentication service for the Admin privileges.
- C. Create a new locale Admin and add the Admin department to the Admin local
- D. Delete the old locale
- E. Finance and remove the Finance department from the Finance locale.

Answer: C

NEW QUESTION 189

Refer to the exhibit.

```
switch# show install all impact epld n9000-epld.9.2.1.img
Compatibility check:
Module      Type      Upgradable      Impact      Reason
-----
1           SUP      YES             disruptive   Module Upgradable

Retrieving EPLD versions... Please wait.

Images will be upgraded according to following table:
Module      Type      EPLD      Running-Version      New-Version      Upg-Required
-----
1           SUP      MI FPGA      0x23                0x23             No
1           SUP      IO FPGA      0x06                0x06             No
1           SUP      MI FPGA2     0x23                0x23             No
```

A network engineer plans to upgrade the current software images of a Cisco Nexus switch. What is the impact of starting the EPLD upgrade?

- A. The switch reboots one time for the new EPLD versions to take effect.
- B. The switch reboots multiple times for the new EPLD versions to take effect.
- C. The switch skips the EPLD upgrade for each EPLD device of the switch.
- D. The switch skips the EPLD upgrade for MIFPGA and proceeds with the other EPLD devices.

Answer: C

Explanation:

https://www.cisco.com/c/en/us/td/docs/switches/datacenter/nexus9000/sw/92x/epld-rn/nxos_n9K_epldRN_924.

NEW QUESTION 191

Host 1 is in VLAN 100 located is DataCenter 1 and Host2 is in VLAN200 located in DataCenter2. Which OTV VLAN mapping configuration allows Layer 2 connectivity between these two hosts?

- A. DC1:
interface Overlay1
otv extend-vlan 100
otv vlan mapping 100 to 200
- DC2:
interface Overlay1
otv extend-vlan 100
otv vlan mapping 100 to 200
- B. DC1:
interface Overlay1
otv extend-vlan 100
otv vlan mapping 100 to 200
- DC2:
interface Overlay1
otv extend-vlan 200
- C. DC1:
interface Overlay1
otv extend-vlan 100
- DC2:
interface Overlay2
otv extend-vlan 200
- D. DC1:
interface Overlay1
otv extend-vlan 100
- DC2:
interface Overlay1
otv extend-vlan 200

- A. Option A
 B. Option B
 C. Option C
 D. Option D

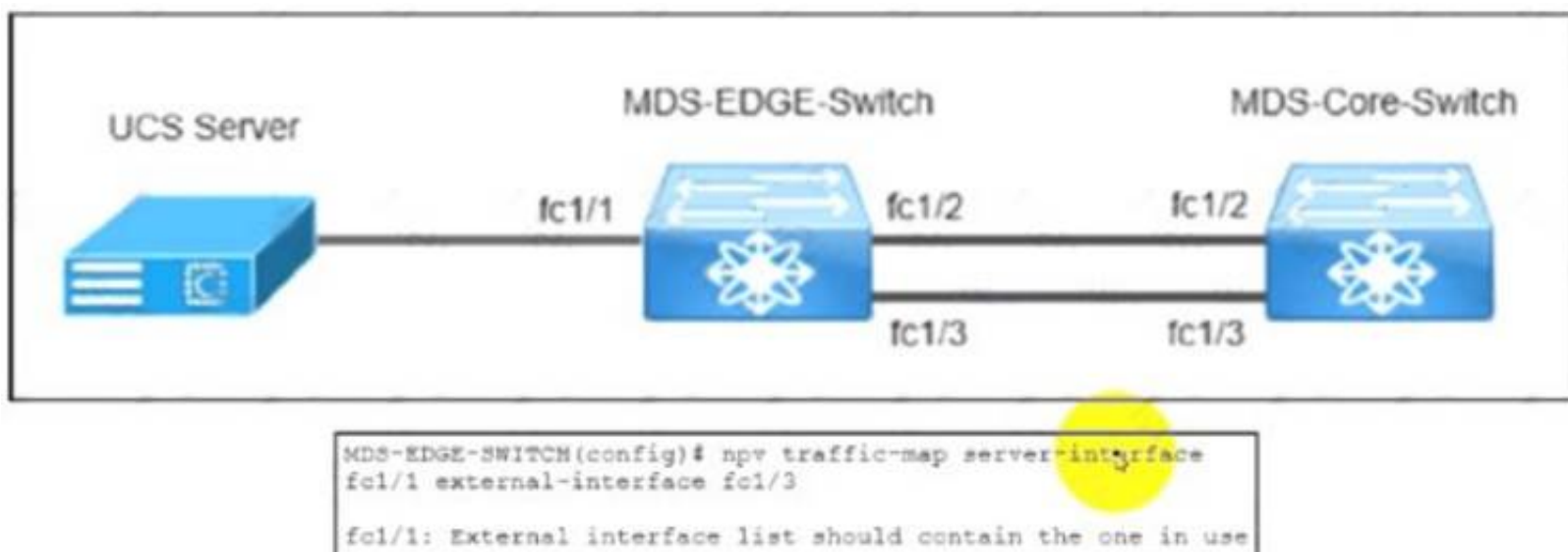
Answer: B

Explanation:

<https://www.cisco.com/c/en/us/support/docs/switches/nexus-7000-series-switches/200998-Nexus-7000-OTV-V>
<https://www.cisco.com/c/en/us/support/docs/switches/nexus-7000-series-switches/200998-Nexus-7000-OTV-V>

NEW QUESTION 193

Refer to the exhibit.



The MDS-EDGE-Switch and MDS-Core-Switch are configured with NPV and NPIV features. The FLOGI from Cisco UCS is received by the MDS-Core-Switch on interface fc1/2. An engineer tried to move all traffic between the MDS-EDGE-Switch and MOS-Core-Switch from interface fc 1/2 to fc1/3, but the attempt failed.

Which set of actions completes the configuration?

- ☐ Disable the NPV feature in the MDS-EDGE-Switch.
Re-enable the NPV feature.
Disable interface fc1/1.
- ☐ Disable the NPV feature in the MDS-EDGE-Switch.
Re-enable the NPV feature.
Disable interface fc1/3.
- ☐ Shut down fc1/1 in the MDS-EDGE-Switch.
Re-apply the command.
Enable interface fc1/1.
- ☐ Shutdown fc1/3 in the MDS-EDGE-Switch.
Re-apply the command.
Enable interface fc1/3.

- A. Option A
- B. Option B
- C. Option C
- D. Option D

Answer: C

NEW QUESTION 194

Refer to the exhibit.

```
monitor fabric session mySession
description "This is my fabric ERSPAN session"
destination tenant t1 application appl epg epg1 destination-ip 192.0.20.123 source-ip-prefix 10.0.20.1
erspan-id 100
ip dscp 42
ip ttl 16
mtu 9216
exit
source interface eth 1/1 switch 101
direction tx
filter tenant t1 bd bdl
filter tenant t1 vrf vrf1
no shut
```

An engineer needs to implement a monitoring session that should meet the following requirements:

- Monitor traffic from leaf to leaf switches on a Cisco ACI network
- Support filtering traffic from Bridge Domain or VRF

Which configuration must be added to meet these requirements?

- A. interface eth 1/2 switch 101
- B. interface eth 1/2 leaf 101
- C. filter tenant t1 application app1 epg epg1
- D. application epg epg1 app1

Answer: C

NEW QUESTION 199

Which server policy is used to install new Cisco IMC software on a server?

- A. host firmware policy
- B. hypervisor firmware policy
- C. BIOS software policy
- D. Cisco IMC software policy

Answer: A

Explanation:

https://www.cisco.com/c/en/us/td/docs/unified_computing/ucs/ucs-manager/CLI-User-Guides/Firmware-Mgmt/4-0/b_UCSM_CLI_Firmware_Management_Guide_4-0/b_UCSM_CLI_Firmware_Management_Guide_4-0_chapter_01.html#

You can use host firmware packages by defining a host firmware policy as an attribute of a service profile template, which is an updating template. Any change made to the service profile template is automatically made to its instantiated service profiles. Subsequently, the servers associated with the service profiles are also upgraded in parallel with the firmware version.

Graphical user interface, text, application Description automatically generated

The Cisco UCS domains are categorized into domain groups in Cisco UCS Central for management purposes. You can manage firmware for each domain group separately at the domain group level or for all domain groups from the domain group root. Cisco UCS Central provides you the option to manage the following Cisco UCS domain firmware packages:

- **Capability Catalog**— One capability catalog per domain group. All Cisco UCS domains registered to a particular domain group will use the capability catalog defined in the domain group.
- **Infrastructure Firmware**— One infrastructure firmware policy per domain group . All Cisco UCS domains registered to a particular domain group will use the same Infrastructure firmware version defined in the domain group.
- **Host Firmware**— You can have more than one **host firmware policy** for the different host firmware components in a domain group. The Cisco UCS domains registered in the domain group will be able to choose any defined **host firmware policy** in the group. Cisco UCS Central provides you the option to upgrade the host firmware globally to all Cisco UCS domains in a domain group at the same time.



Note

For more information on managing firmware in Cisco UCS Central, see the Firmware Management chapters in the *Cisco UCS Central Administration Guide* and *Cisco UCS Central CLI Reference Manual*.

NEW QUESTION 204

Drag and drop the storage technologies from the left onto the correct descriptions on the right.

NFSv2	uses client machine authentication
Kerberos	uses users authentication
NFSv4	authenticates clients and servers in NFSv4
RADIUS	authenticates clients to corporate directory systems

- A. Mastered
- B. Not Mastered

Answer: A

Explanation:

Application Description automatically generated

The release of NFSv4 brought a revolution to authentication and security to NFS exports. NFSv4 mandates the implementation of the RPCSEC_GSS kernel module, the Kerberos version 5 GSS-API mechanism, SPKM-3, and LIPKEY. With NFSv4, the mandatory security mechanisms are oriented towards authenticating individual users, and not client machines as used in NFSv2 and NFSv3. https://web.mit.edu/rhel-doc/5/RHEL-5-manual/Deployment_Guide-en-US/s1-nfs-security.html

NEW QUESTION 208

An engineer must perform an initial configuration of VXLAN Tunnel End-Point functionality on the Cisco Nexus 9000 Series platform All the necessary features are already enabled on the switch Which configuration set must be used to accomplish this goal?

- ☐ NX9K(config)# interface loopback0
NX9K(config-if)# ip address 10.10.10.11/32
- ☐ NX9K(config)# interface overlay0
NX9K(config-if-overlay)# source-interface loopback0
- ☐ NX9K(config)# interface VLAN10
NX9K(config-if-nve)# source-interface loopback0
- ☐ NX9K(config)# interface loopback0
NX9K(config-if)# ip address 10.10.10.11/32
- ☐ NX9K(config)# interface tunnel1
NX9K(config-if)# tunnel source loopback0
- ☐ NX9K(config)# interface ethernet1/1
NX9K(config-if)# ip unnumbered loopback0
- ☐ NX9K(config)# interface loopback0
NX9K(config-if)# ip address 10.10.10.11/32
- ☐ NX9K(config)# interface nve1
NX9K(config-if-nve)# source-interface loopback0
- ☐ NX9K(config)# interface ethernet1/1
NX9K(config-if)# ip unnumbered loopback0
- ☐ NX9K(config)# interface loopback0
NX9K(config-if)# ip address 10.10.10.11/32
- ☐ NX9K(config)# interface VLAN10
NX9K(config-if)# ip unnumbered loopback0
- ☐ NX9K(config)# interface nve1
NX9K(config-if-nve)# source-interface loopback0

- A. Option A
- B. Option B
- C. Option C
- D. Option D

Answer: D

NEW QUESTION 211

A network architect must redesign a data center on OSPFv2. The network must perform fast reconvergence between directly connected switches. Which two actions must be taken to meet the requirement? (Choose two)

- A. Configure all links on AREA 0.
- B. Implement a virtual link between the switches.
- C. Use OSPF point-to-point links only.
- D. Set low OSPF hello and DEAD timers.
- E. Enable BFD for failure detection.

Answer: CD

NEW QUESTION 214

Refer to the exhibit.

```
vlan 10
 fcoe vsan 10

interface ethernet 1/3
 spanning-tree port type edge trunk
 switchport mode trunk
 switchport trunk allowed vlan 1, 10
```

An engineer must configure FCoE on a Cisco Nexus switch. Which two command sets complete this configuration? (Choose two.)

- ☒ interface vfc 10
 - bind interface fcoe-vfc 1/3
 - no shut
- ☐ vsan database
 - vsan 10 interface ethernet 1/3
- ☒ interface fcoe 10
 - bind interface ethernet 1/3
 - no shut
- ☐ interface vfc 10
 - bind interface ethernet 1/3
 - no shut
- ☐ vsan database
 - vsan 10 interface vfc 10

- A. Option A
- B. Option B
- C. Option C
- D. Option D
- E. Option E

Answer: DE

Explanation:

```
switch# configure terminal
```

```
switch(config)# vsan database
```

```
switch(config-vsan)# vsan 2 interface vfc 4
```

This example shows how to bind a virtual Fibre Channel interface to an Ethernet interface:

```
switch# configure terminal
```

```
switch(config)# interface vfc 4
```

```
switch(config-if)# bind interface ethernet 1/4
```

https://www.cisco.com/c/en/us/td/docs/switches/datacenter/nexus5000/sw/fcoe/421_n1_1/b_Cisco_n5k_fcoe_config_gd_re_421_n1_1/Cisco_n5k_fcoe_config_gd_re_421_n1_1_chapter4.html

NEW QUESTION 219

A POAP-enabled Cisco Nexus switch will not enter POAP mode. Which two conditions should be verified? (Choose two.)

- A. Bootflash must contain a special directory named POAP with poap.py file.
- B. The switch is in bootup process.
- C. No startup configuration is available.
- D. The license file is missing on the switch.
- E. No Cisco NX-OS image is present on the bootflash.

Answer: BC

Explanation:

POAP is an automatic provisioning and zero-touch deployment feature that assists device owners in the initial deployment and configuration of Nexus switches. The feature works by checking for a local configuration script. If the script has been deleted, the switch has been reset to factory settings, or this is the first boot-up, the POAP daemon will connect to a preset list of servers to download an initial configuration file. To perform this operation, the switch must first obtain an IP address from a local DHCP server. POAP configuration settings can also be passed through the DHCP response.

Which conditions should be verified, so they need to be TRUE. Like no startup (A) and bootup (B). C means that it needs to miss a license file and E means it needs to miss an NX-OS image.

NEW QUESTION 223

An engineer is implementing NetFlow on a Cisco Nexus 7000 Series Switch. Drag and drop the NetFlow commands from the left into the correct order they must be entered on the right.

N7K-1(config)# interface <interface> N7K-1(config-if)# ip flow monitor NetflowMonitor input	Step 1
N7K-1(config)# feature netflow	Step 2
N7K-1(config)# flow exporter NetflowMonitor N7K-1(config)# flow record NetflowMonitor	Step 3
N7K-1(config)# flow monitor NetflowMonitor	Step 4

- A. Mastered
B. Not Mastered

Answer: A

Explanation:

- 1- feature netflow
2- flow exporter
3- flow monitor
4- interface<interface>

NEW QUESTION 225

An engineer implements an ACI fabric and must implement microsegmentation of endpoints within the same IP subnet using a network-based attribute. The attribute mapping must allow IP subnet independence. Which attribute must be selected?

- A. MAC address
B. Custom
C. Tag
D. IP

Answer: D

Explanation:

If you want to use a network-based attribute and classify IP addresses in the same subnet, you must use the MAC-based network attribute. IP-based microsegmented EPGs do not support classification for IP addresses in the same subnet.

https://www.cisco.com/c/en/us/td/docs/switches/datacenter/aci/apic/sw/3-x/virtualization/b_ACI_Virtualization_

NEW QUESTION 228

What is a benefit of independent resource scaling in Cisco HyperFlex hybrid architecture?

- A. flexible expansion of compute, caching, and capacity
B. remote booting of converged servers
C. multivendor converged node hardware support
D. support for compute nodes with third-party storage

Answer: D

NEW QUESTION 231

A Cisco UCS C-Series server is installed at a data center. The server should be managed by the Cisco UCS Manager by using a single cable for management and data traffic. Which configuration should be applied after the Physical connection is established?

- A. UCS-A# scope server 1 UCS-A /server# scope cimcUCS-A /server/cimc # scope mgmt-conn sidebandUCS-A /server/cimc # mgmt-conn-state enabled UCS-A /server/cimc/mgmt-conn* # commit-buffer
B. UCS-A# scope chassis 1 UCS-A /chassis# scope cimcUCS-A /chassis/cimc # scope mgmt-conn sidebandUCS-A /chassis/cimc/mgmt-conn # mgmt-conn-state enabled UCS-A /chassis/cimc/mgmt-conn* # commit-buffer
C. UCS-A# scope chassis 1 UCS-A /chassis# scope cimcUCS-A /chassis /cimc # set mgmt-conn-state enabled UCS-A /chassis /cimc/mgmt-conn* # commit-buffer
D. UCS-A# scope server 1 UCS-A /server# scope cimcUCS-A /server/cimc # scope mgmt-conn sidebandUCS-A /server/cimc/mgmt-conn #set mgmt-conn-state enabled UCS-A /server/cimc/mgmt-conn* # commit-buffer

Answer: D

Explanation:

Example

UCS-A# scope server 1 UCS-A /server # scope cimc

UCS-A /server/cimc # scope mgm

UCS-A /server/cimc # scope mgmt-conn

UCS-A /server/cimc # scope mgmt-conn sideband

UCS-A /server/cimc/mgmt-conn # set mgmt-conn-state enabled UCS-A /server/cimc/mgmt-conn* # commit-buffer

UCS-A /server/cimc/mgmt-conn

https://www.cisco.com/c/en/us/td/docs/unified_computing/ucs/c-series_integration/ucsm3-1/b_C-Series-Integration_UCSM3-1/b_C-Series-Integration_UCSM3-1_chapter_010.html

NEW QUESTION 232

Refer to the exhibit.


```
Start time: Mon Apr 15 09:23:01 2019
Last election time: Mon Apr 15 09:24:24 2019
A: UP, PRIMARY
B: UP, SUBORDINATE
A: memb state UP, lead state PRIMARY, mgmt services state: UP
B: memb state UP, lead state SUBORDINATE, mgmt services state: UP
heartbeat state PRIMARY_OK
INTERNAL NETWORK INTERFACES:
eth1, UP
eth2, UP
HA NOT READY
No device connected to this Fabric Interconnect
```

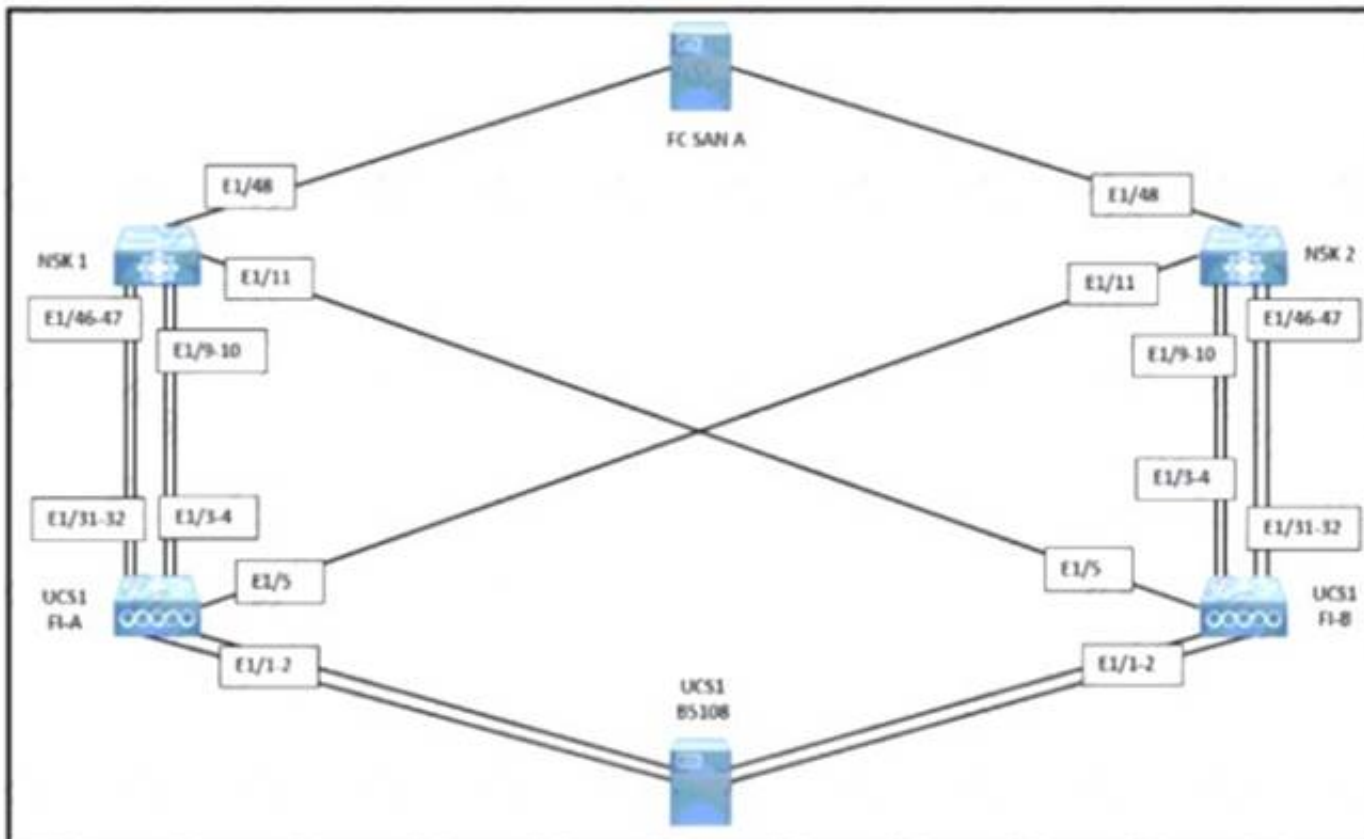
What be connected to clear the HA NOT READY status?

- A. server chassis
- B. network uplinks
- C. management ports
- D. Layer 1-Layer 2 ports

Answer: A

NEW QUESTION 236

Refer to the exhibit.



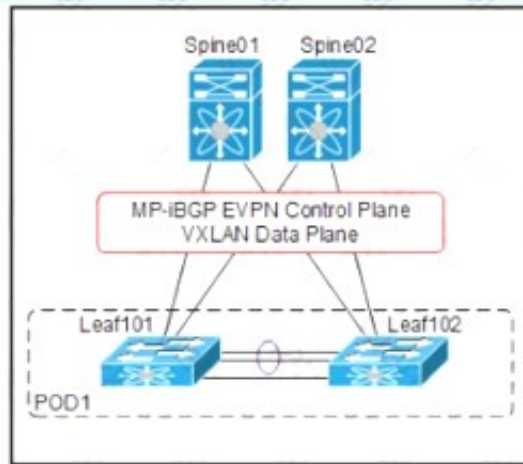
A network engineer must configure port E1/31- 32 to forward only storage server traffic of VLAN 200 on Cisco fabric interconnects A and B. Port E1/31- 32 is not reserved for any other traffic. Which port type must be configured to accomplish this goal?

- A. unified uplink
- B. uplink
- C. FCoE uplink
- D. FCoE storage

Answer: C

NEW QUESTION 241

Refer to the exhibit.



```
SPINE-01#show run pim
ip pim rp-address 10.255.0.100 group-list 225.0.0.0/8
ip pim bsr rp-candidate loopback1 group-list 225.0.0.0/8
ip pim ssm range 232.0.0.0/8
ip pim anycast-rp 10.255.0.100 10.10.0.1
ip pim anycast-rp 10.255.0.100 10.10.0.2
!
!
SPINE-01#show run interface loopback1
interface loopback1
ip router ospf 1 area 0.0.0.0
ip pim sparse-mode
```

An engineer must implement VXLAN with anycast gateway. To accomplish this, an engineer must set up PIM Source-Specific Multicast for host reachability. Which IP address must be applied to interface loopback1 to accomplish this goal?

- A. 255.0.0.1/8
- B. 255.0.100
- C. 10.10.0.1/32
- D. 10.10.0.2/32

Answer: B

NEW QUESTION 246

Refer to the exhibit.

```
1.130599 192.168.254.1 -> 192.168.254.13 TCP 60 29652 > ssh [ACK] Seq=1 Ack=53
Win=32449 Len=0
1.136261 00:8e:73:a2:41:0e -> Spanning-tree-(for-bridges)_00 STP 60 Conf. Root =
8192/10/ec:e1:a9:df:6c:80 Cost = 22 Port = 0x800e
1.373417 192.168.254.13 -> 192.168.254.1 SSH 106 Encrypted response packet len=52
1.570377 192.168.254.1 -> 192.168.254.13 TCP 60 29652 > ssh [ACK] Seq=1 Ack=105
Win=32786 Len=0
1.815558 192.168.254.13 -> 192.168.254.1 SSH 106 Encrypted response packet len=52
2.021840 192.168.254.1 -> 192.168.254.13 TCP 60 29652 > ssh [ACK] Seq=1 Ack=157
Win=32773 Len=0
2.525173 192.168.254.13 -> 192.168.254.1 SSH 106 Encrypted response packet len=52
2.731382 192.168.254.1 -> 192.168.254.13 TCP 60 29652 > ssh [ACK] Seq=1 Ack=209
Win=32760 Len=0
2.947365 192.168.254.13 -> 192.168.254.1 NTP 90 NTP Version 2, client
2.947623 192.168.254.1 -> 192.168.254.13 NTP 90 NTP Version 2, server
3.138157 00:8e:73:a2:41:0e -> Spanning-tree-(for-bridges)_00 STP 60 Conf. Root =
8192/10/ec:e1:a9:df:6c:80 Cost = 22 Port = 0x800e
3.139400 192.168.254.13 -> 192.168.254.1 SSH 106 Encrypted response packet len=52
3.270728 192.168.254.4 -> 239.255.70.83 UDP 166 Source port: cfs Destination port:
cfs
3.341123 192.168.254.1 -> 192.168.254.13 TCP 60 29652 > ssh [ACK] Seq=1 Ack=261
Win=32747 Len=0
3.835409 192.168.254.13 -> 192.168.254.1 SSH 106 Encrypted response packet len=52
4.041411 192.168.254.1 -> 192.168.254.13 TCP 60 29652 > ssh [ACK] Seq=1 Ack=313
Win=32734 Len=0
4.535284 192.168.254.13 -> 192.168.254.1 SSH 106 Encrypted response packet len=52
4.741072 192.168.254.1 -> 192.168.254.13 TCP 60 29652 > ssh [ACK] Seq=1 Ack=365
Win=32721 Len=0
4.947308 192.168.254.13 -> 192.168.254.1 NTP 90 NTP Version 2, client
4.947519 192.168.254.1 -> 192.168.254.13 NTP 90 NTP Version 2, server
5.139627 00:8e:73:a2:41:0e -> Spanning-tree-(for-bridges)_00 STP 60 Conf. Root =
8192/10/ec:e1:a9:df:6c:80 Cost = 22 Port = 0x800e
5.140867 192.168.254.13 -> 192.168.254.1 SSH 106 Encrypted response packet len=52
```

Cisco Fabric Services is enabled in the network. Which type of IP address is used by the Cisco Fabric Services protocol?

- A. IPv4 unicast address
- B. IPv4 multicast address
- C. IPv4 gateway address
- D. IPv4 anycast address

Answer: B

NEW QUESTION 247

What is the benefit of adding Cisco HyperFlex Hardware Acceleration Cards to a HyperFlex deployment?

- A. offline encryption acceleration
- B. increased network throughput

- C. GPU acceleration
- D. Increased compression efficiency

Answer: D

Explanation:

- [Additional Information on HyperFlex Hardware Acceleration Cards](#)

Overview of HyperFlex Hardware Acceleration Cards

This chapter provides details for installation, post-installation, and troubleshooting of HyperFlex Hardware Acceleration Cards (PID: HX-PCIE-OFFLOAD-1) on HyperFlex nodes and for configuring your initial cluster. **These cards provide improved performance and compression efficiency for most storage workloads.**



Note

An HXDP-P Enterprise license is required for installing and configuring HyperFlex Hardware Acceleration Cards.

https://www.cisco.com/c/en/us/td/docs/hyperconverged_systems/HyperFlex_HX_DataPlatformSoftware/Installation_VMWare_ESXi/3_5/b_HyperFlexSystems_Installation_Guide_for_VMware_ESXi_3_5/b_HyperFlexSystems_Installation_Guide_for_VMware_ESXi_3_5_chapter_01100.html#:~:text=Overview%20of%20HyperFlex%20Hardware%20Acceleration%20Cards,-This%20chapter%20provides&text=These%20cards%20provide%20improved%20performance%20and%20compression%20efficiency%20for%20most%20storage%20workloads.

NEW QUESTION 249

A customer asks an engineer to develop a framework that will be used to replace the process of the manual device configuration of Cisco NX-OS devices. The engineer plans to use the programmatic interface that meets these requirements:

- The development team is familiar with Windows-based scripting environment using PowerShell.
- The customer's security requirements mandate the use of HTTPS transport.

Which solution must be used to meet these requirements?

- A. NX-API
- B. VISORE
- C. Open Agent Container
- D. NETCONF-YANG

Answer: A

NEW QUESTION 252

A network engineer must create a script to quickly verify IP reachability for multiple hosts using ping from the Cisco NX-OS switches. The script should use the management VRF and exit the shell after execution Which script should be used to achieve this objective?

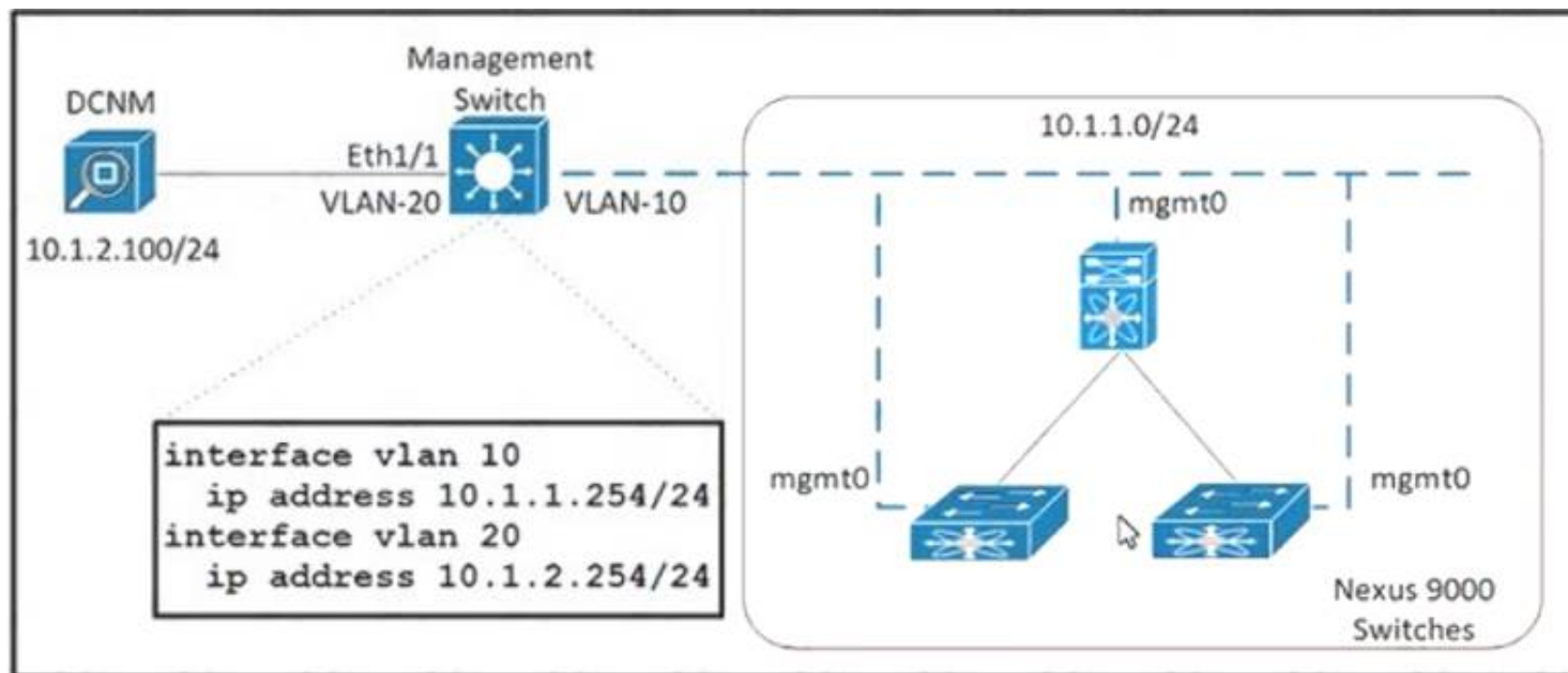
- ☐ `tclsh`
`foreach address {`
`192.168.254.1`
`192.168.254.2`
`192.168.254.3`
`192.168.254.4`
`} {ping $address source 192.168.254.254`
`}`
`tclquit`
- ☐ `tclsh`
`foreach address {`
`192.168.254.1`
`192.168.254.2`
`192.168.254.3`
`192.168.254.4`
`} {ping $address source 192.168.254.254`
`}`
- ☐ `tclsh`
`foreach address {`
`192.168.254.1`
`192.168.254.2`
`192.168.254.3`
`192.168.254.4`
`} {ping $address vrf management source 192.168.254.254`
`}`
- ☒ `tclsh`
`foreach address {`
`192.168.254.1`
`192.168.254.2`
`192.168.254.3`
`192.168.254.4`
`} {cli ping $address vrf management source 192.168.254.254`
`}`
`tclquit`

- A. Option A
- B. Option B
- C. Option C
- D. Option D

Answer: D

NEW QUESTION 255

Refer to the exhibit.



An engineer must deploy 70 Cisco Nexus 9000 Series Switches in a new environment. The requirement is to use Cisco DCNM as a management tool to deploy, manage and monitor the new switches. In addition, DCNM is configured with a zero-touch POAP feature to facilitate fabric creation. Which action meets these requirements?

- A. Configure SNMP on the new Nexus switches to send SNMP messages to the DCNM server
- B. Create a SPAN session on the management switch to send the traffic from VLAN 10 to Ethernet 1/1.
- C. Configure an IP helper address on interface VLAN 10 of the management switch
- D. Create common credentials on all of the new Nexus switches

Answer: C

NEW QUESTION 260

An engineer must allow communication between the APIC controller and an OpenStack OpFlex agent. The agent is running on a compute node directly plugged to a Cisco ACI leaf switch. The engineer must enable and extend Infra VLAN on the port facing the compute and extend the Infra VLAN to the host. Which action must be taken to meet these requirements?

- A. Enable the Infra VLAN on the Interface Profile policy
- B. Enable the Infra VLAN on the Attachable Access Entity Profile.
- C. Add the infra VLAN via the physical domain.
- D. Add the infra VLAN via the VMM domain.

Answer: C

NEW QUESTION 265

An engineer is converting a Cisco MDS switch to support NPIV mode. What should be considered when implementing the solution?

- A. It must be enabled on VSAN 1 only.
- B. It must be enabled globally on all VSANs.
- C. It requires mapping of external interface traffic.
- D. It requires the FLOGI database to be disabled.

Answer: B

Explanation:

https://www.cisco.com/c/en/us/td/docs/switches/datacenter/mds9000/sw/5_0/configuration/guides/int/nxos/cli_i

NEW QUESTION 270

An engineer performs a Cisco UCS C480 ML M5 installation from a Cisco UCS Manager. As a part of the design, the server must perform an iSCSI boot from the storage array. Which configuration must be performed in the SAN settings in the root organization to satisfy that condition?

- A. Implement a WWPN pool
- B. Create a virtual iSCSI vNIC
- C. Enable a host SAN pool
- D. Create an IQN suffix pool

Answer: D

NEW QUESTION 271

An engineer is asked to manage a large-scale data center and collect information from multiple Cisco NX-OS devices using Cisco NX-OS Data Management Engine model. Which technology should be used to accomplish this goal?

- A. NX-API REST
- B. NETCONF
- C. JSON-RPC
- D. NX Yang

Answer: A

Explanation:

https://www.cisco.com/c/en/us/td/docs/switches/datacenter/nexus9000/sw/7-x/programmability/guide/b_Cisco_Nexus_9000_Series_NX-OS_Programmability_Guide_7x/b_Cisco_Nexus_9000_Series_NXOS_Programmability_Guide_7x_chapter_010001.pdf

NEW QUESTION 274

A network engineer must determine the cooling requirements for a Cisco UCS C-Series Rack Server. The server with PCIe cards is configured with a fan configuration policy. Which configuration should be used for the fan policy of the server?

- ☒ `server # scope chassis`
`server /chassis # scope fan-policy`
`server /chassis/fan-policy # set fan-policy high-power`
`server /chassis/fan-policy^ # commit`
- ☐ `server # scope chassis`
`server /chassis # scope fan-policy`
`server /chassis/fan-policy # set fan-policy balanced`
`server /chassis/fan-policy^ # commit`
- ☐ `server # scope server`
`server /server # scope fan-policy`
`server /server /fan-policy # set fan-policy acoustic`
`server /server /fan-policy^ # commit`
- ☐ `server # scope server`
`server /server # scope fan-policy`
`server /server /fan-policy # set fan-policy low-power`
`server /server /fan-policy^ # commit`

- A. Option A
- B. Option B
- C. Option C
- D. Option D

Answer: A

NEW QUESTION 276

An engineer is implementing OTV on a transport that supports multicast. The solution needs to meet the following requirements:

- Establish adjacency to the remote peer by using multicast.
- Enable OTV advertisements for VLAN 100 to the other site.

Which two commands should be configured to meet these requirements? (Choose two.)

- A. `otv site-vlan 100`
- B. `otv data-group 232.2.2.0/28`
- C. `otv use-adjacency-server 172.27.255.94`
- D. `otv extend-vlan 100`
- E. `otv control-group 232.1.1.1`

Answer: DE

Explanation:

https://www.cisco.com/c/dam/en/us/products/collateral/switches/nexus-7000-series-switches/guide_c07-728315

https://www.cisco.com/c/en/us/td/docs/switches/datacenter/sw/nx-os/OTV/config_guide/b_Cisco_Nexus_7000_

NEW QUESTION 281

A company plans to deploy a Cisco HyperFlex solution for data-intensive applications and databases. The proposed solution should offer the highest performance with high consistency and low latency. Which Cisco HyperFlex storage configuration should be used?

- A. All-HDD
- B. All-NVMe
- C. All-Flash
- D. Hybrid

Answer: B

NEW QUESTION 284

An engineer configures a storage environment for a customer with high-security standards. The secure environment is configured in vsan 50. The customer wants to maintain a configuration and active databases and prevent unauthorized switches from joining the fabric. Additionally, the switches must prevent rogue devices from connecting to their ports by automatically learning the WWPNs of the ports connected to them for the first time. Which two configuration sets must be used to meet these requirements? (Choose two.)

- ☐ port-security enable
port-security activate vsan 50
- ☐ clear fabric-binding activate vsan 50
fabric-binding activate vsan 50
- ☐ fabric-binding activate vsan 50 force
- ☐ fcsp enable
fcsp auto-active
- ☐ fcsp dhchap hash md5 sha1

- A. Option A
- B. Option B
- C. Option C
- D. Option D
- E. Option E

Answer: AC

NEW QUESTION 288

An engineer must generate a Cisco UCS Manager backup. The backup should include all logical configuration and contain all system and logical configuration settings. Which backup type should be selected to meet these requirements?

- A. system configuration
- B. logical configuration
- C. all configuration
- D. full state

Answer: C

NEW QUESTION 291

An engineer has a primary fabric that is named UCS-A and a secondary fabric that is named UCS-B. A certificate request that has a subject name of sjc2016 for a keyring that is named kr2016 needs to be created. The cluster IP address is 10.68.68.68. Which command set creates this certificate request?

- A. UCS-A # scope keyring kr2016UCS-A /keyring # create certreq 10.68.68.68 sjc2016UCS-A /keyring* # commit-buffer
- B. UCS-B # scope keyring kr2016UCS-B /keyring # create certreq ip 10.68.68.68 subject-name sjc2016UCS-B /keyring* # commit-both
- C. UCS-B# scope securityUCS-B /security # scope keyring kr2016UCS-B /security/keyring # set certreq 10.68.68.68 sjc2016UCS-B /security/keyring* # commit-both
- D. UCS-A# scope securityUCS-A /security # scope keyring kr2016UCS-A /security/keyring # create certreq ip 10.68.68.68 subject-name sjc2016UCS-A /security/keyring* # commit-buffer

Answer: D

Explanation:

https://www.cisco.com/c/en/us/td/docs/unified_computing/ucs/ucs-manager/CLI-User-Guides/Admin-Management/4-0/b_Cisco_UCS_Manager_CLI_Administration_Mgmt_Guide_4-0/b_Cisco_UCS_Manager_CLI_Administration_Mgmt_Guide_4-0_chapter_0110.html

NEW QUESTION 293

An engineer must configure HTTPS secure management for Cisco UCS Manager using a key ring named kr2016 and a key size of 1024 bits. The environment consists of a primary fabric interconnect named UCS-A and a secondary fabric interconnect named UCS-B. Which command sequence must be used to accomplish this goal?

- ☐ UCS-B# scope security
 UCS-B /security # keyring kr2016
 UCS-B /security/keyring* # set mod mod1024
 UCS-A /security/keyring* # commit-buffer
- ☐ UCS-A# scope security
 UCS-A /security # create keyring kr2016
 UCS-A /security/keyring* # set modulus mod1024
 UCS-A /security/keyring* # commit-buffer
- ☐ UCS-B# scope security
 UCS-B /security # create keyring kr2016
 UCS-B /security/keyring* # set size mod1024
 UCS-A /security/keyring* # commit-buffer
- ☐ UCS-A# scope security
 UCS-A /security # keyring name kr2016
 UCS-A /security/keyring* # set size 1024
 UCS-A /security/keyring* # commit-buffer

- A. Option A
- B. Option B
- C. Option C
- D. Option D

Answer: B

Explanation:

https://www.cisco.com/en/US/docs/unified_computing/ucs/sw/cli/config/guide/1.4.1/CLI_Config_Guide_1_4_1

```
UCS-A# scope security
UCS-A /security # create keyring kr220
UCS-A /security/keyring* # set modulus mod1024
UCS-A /security/keyring* # commit-buffer
UCS-A /security/keyring #
```

NEW QUESTION 296

An engineer implements SPAN configuration on an Nexus 5000 series switch. Which two commands are necessary to complete the SPAN session configuration? (Choose two)

```
N5K-Core# configure terminal
Enter configuration commands, one per line. End with CNTL/Z.
N5K-Core(config)# interface fc2/1
N5K-Core(config-if)# switchport speed 4000
N5K-Core(config-if)# no shutdown
N5K-Core(config)# interface fc2/2
N5K-Core(config-if)# no shutdown
N5K-Core(config)# monitor session 1
N5K-Core(config-monitor)# source interface fc2/1
N5K-Core(config-monitor)# destination interface fc2/2
N5K-Core(config-monitor)# no shutdown
```

- A. Configure the switchport monitor under interface fc2/2
- B. Configure the switchport mode SD under interface tc2/1.
- C. Configure switchport speed 4000 under interface fc2/2.
- D. Configure session type fc under monitor session 1.
- E. Configure the switchport mode SD under interface fc2/2.

Answer: CE

Explanation:

<https://www.cisco.com/c/en/us/td/docs/switches/datacenter/nexus5000/sw/configuration/guide/cli/CLIConfigurationGuide/SPAN.html>

NEW QUESTION 299

An engineer must perform a POAP deployment of a Cisco Nexus 9000 Series Switch. The switch must automatically receive its software image and configuration file upon power-on. Also, only UDP is permitted between the Nexus 9000 switch and the server that hosts the Cisco NX-OS system images. Which set of actions completes the configuration?

- A. Enable option 67. Define TFTP transfer protocol.
- B. Enable option 43. Define HTTP transfer protocol.
- C. Enable option 46. Define TFTP transfer protocol.
- D. Enable option 35. Define HTTP transfer protocol.

Answer: A

NEW QUESTION 304

A network engineer must configure a power redundancy policy on a Cisco UCS C-Series Rack Server. The power redundancy must support two power sources being used to power the server. Which configuration should be applied to meet the requirement?

- ☐ A. `server# scope org /`
`server /org # scope psu-policy`
`server /org/psu-policy # set redundancy N+1`
`server /org/psu-policy* # commit-buffer`
- ☐ B. `server# scope org /`
`server /org # scope psu-policy`
`server /org/psu-policy # set psu-redundancy-policy grid`
`server /org/psu-redundancy-policy* # commit-buffer`
- ☐ C. `server# scope org /`
`server /org # scope psu-policy`
`server /org/psu-policy # set psu-redundancy-policy N+1`
`server /org/psu-redundancy-policy* # commit-buffer`
- ☐ D. `server# scope org /`
`server /org # scope psu-policy`
`server /org/psu-policy # set redundancy grid`
`server /org/psu-policy* # commit-buffer`

- A. Option A
- B. Option B
- C. Option C
- D. Option D

Answer: D

Explanation:

https://www.cisco.com/c/en/us/td/docs/unified_computing/ucs/ucs-manager/CLI-User-Guides/Server-Mgmt/3-1 The command "N+1" is invalid. The command should be "n-plus-1"

	Command or Action	Purpose
Step 1	UCS-A# <code>scope org org-name</code>	Enters organization mode for the specified organization. To enter the root organization mode, type <code>/</code> as the <code>org-name</code> .
Step 2	UCS-A /org # <code>scope psu-policy</code>	Enters PSU policy mode.
Step 3	UCS-A /org/psu-policy # <code>set redundancy {grid n-plus-1 non-redund}</code>	Specifies one of the following redundancy types: <ul style="list-style-type: none"> • grid –Two power sources are turned on, or the chassis requires greater than N+1 redundancy. If one source fails (which causes a loss of power to one or two PSUs), the surviving PSUs on the other power circuit continue to provide power to the chassis. • n-plus-1 –The total number of PSUs to satisfy non-redundancy, plus one additional PSU for redundancy, are turned on and equally share the power load for the chassis. If any additional PSUs are installed, Cisco UCS Manager sets them to a "turned-off" state. • non-redund –All installed power supplies (PSUs) are turned on and the load is evenly balanced. Only smaller configurations (requiring less than 2500W) can be powered by a single PSU. For more information about power redundancy, see the <i>Cisco UCS 5108 Server Chassis Installation Guide</i> .
Step 4	UCS-A /org/psu-policy # <code>commit-buffer</code>	Commits the transaction to the system configuration.

NEW QUESTION 305

An engineer must configure a control plane policy on a Cisco Nexus 9000 Series Switch that is located at IP 192.168 20.1 that moots those requirements

- Only HTTP, RDP, and ICMP traffic is permitted from subnet 192.168.10.0/24.
- The committed information rate must be 54000 pps.
- The burst size must be 128 packets.
- Any other traffic must be dropped.

Drag and drop the code snippets from the bottom onto the blanks in the code on the top to complete the configuration. Not all code snippets are used

visit - <https://www.surepassexam.com>


```

ACI-Leaf1# show ip route vrf DATACENTER:DC

10.20.1.0/24, ubest/mbest: 1/o, attached, direct, pervasive

    *via 10.0.8.65%overlay-1, [1/o], 4w3d, static

172.16.100.0/24, ubest/mbest: 1/o

    *via 10.1.168.95%overlay-1, [200/5], 3wod, bgp-132, internal, tag 132 (mpls-vpn)

172.16.99.0/24, ubest/mbest: 1/o

    *via 10.0.1.14, [20/o], 3wod, bgp-132, external, tag 200
    
```

Which two statements describe the routing table of the leaf switch? (Choose two.)

- A. The next hop 10.0.8.65 for route 10.20.1.0/24 is the TEP address of a border leaf in ACI.
- B. The next hop 10.0.1.14 for route 172.16.99.0/24 is the TEP address of a border leaf in ACI.
- C. The next hop 10.1.168.95 for route 172.16.100.0/24 is the TEP address of a border leaf in ACI.
- D. 172.16.100.0/24 is a BD subnet in ACI.
- E. 10.20.1.0/24 is a BD subnet in ACI.

Answer: CE

NEW QUESTION 317

A Cisco UCS user called "Employee1" accidentally changed the boot policy of the Cisco UCS server at the Cisco UCS Manager root level. This change impacted all service profiles and their storage connectivity was lost. The system administrator wants to prevent this issue from recurring in the future. The new security policy mandates that access must be restricted up to the organization level and prevent other users from modifying root policies. Which action must be taken to meet these requirements?

- A. Modify the privilege level assigned to the user
- B. Define a custom user role and assign it to users
- C. Assign the user "Employee1" the network-operator role
- D. Assign users to a specific Cisco UCS locale

Answer: D

Explanation:

https://www.cisco.com/c/en/us/td/docs/unified_computing/ucs/ucs-manager/GUI-User-Guides/Admin-Managem

Locales

User Locales

You can assign a user to one or more locales. Each locale defines one or more organizations (domains) to which a user can access. **Access is usually limited to the organizations specified in the locale.** An exception is a locale without any organizations. It provides unrestricted access to system resources in all organizations.

A Cisco UCS domain can contain up to 48 user locales. Any user locales configured after the first 48 are accepted, but are inactive with faults raised.

NEW QUESTION 321

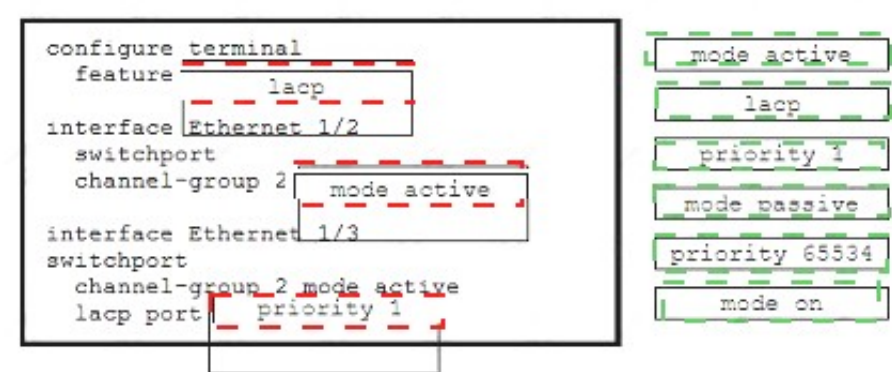
An engineer must configure an LACP port channel on two Cisco Nexus 7000 Series Switches. The interface e1/2 must be a hot-standby link that initiates negotiation with other ports Drag and drop the commands from the right onto the blanks in the configuration on the left Not all commands are used

<pre> configure terminal feature interface Ethernet 1/2 switchport channel-group 2 interface Ethernet 1/3 switchport channel-group 2 mode active lacp port </pre>	<div>mode active</div> <div>lacp</div> <div>priority 1</div> <div>mode passive</div> <div>priority 65534</div> <div>mode on</div>
--	---

- A. Mastered
- B. Not Mastered

Answer: A

Explanation:



NEW QUESTION 324

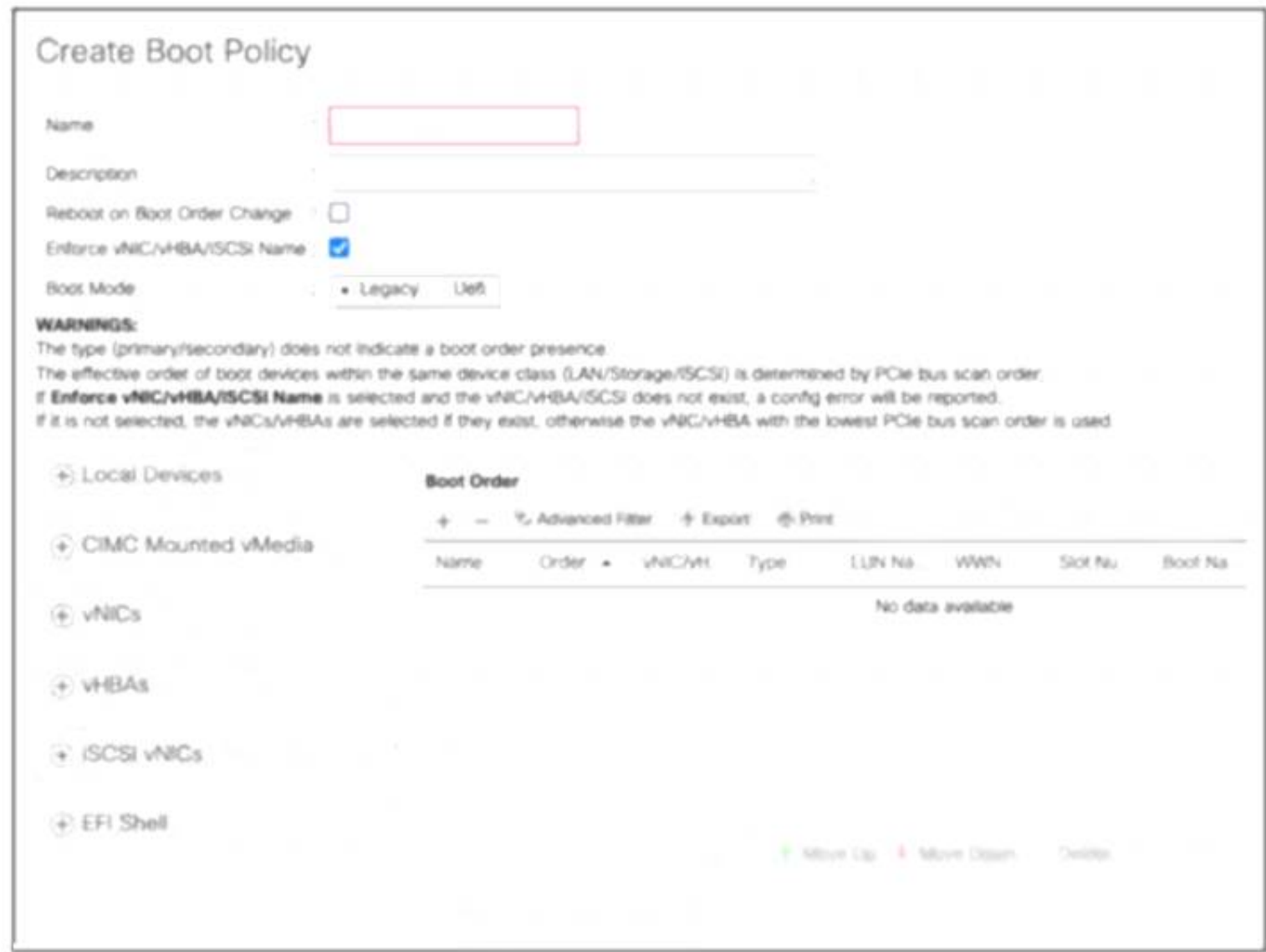
What is a benefit of using the Cisco UCS Lightweight upgrade feature?

- A. Security updates are scheduled with the next reboot of the fabric interconnects.
- B. All servers are rebooted to push the latest updates.
- C. The firmware version of a component is updated only when it has been modified.
- D. A soft reboot is available for the fabric interconnects.

Answer: C

NEW QUESTION 329

Refer to the exhibit.



An engineer installs a new Cisco UCS B-Series server. The requirement is to install an operating system on a LUN that is provided by the Fibre Channel storage array. Which two steps must be configured in the boot policy to accomplish this goal? (Choose two.)

- A. Disable Enforce vNIC^HBA/ISCSI Name
- B. Add Local CD/DVD and SAN Boot.
- C. Configure a SAN Boot Target with a WWPN
- D. Set Boot Order to External USB and LAN Boot
- E. Create (SCSI VNICS and add Local LUN

Answer: AD

NEW QUESTION 330

Refer to the exhibit.

```
switch(config)# feature dhcp
switch(config)# ip dhcp snooping
switch(config)# service dhcp
switch(config)# ip dhcp snooping vlan 100,200,250-252
switch(config)# ip dhcp relay information option
```

Which action is taken to ensure that the relay agent forwards the DHCP BOOTREQUEST packet to a DHCP server?

- A. Configure the interface of the DHCP server as untrusted.
- B. Configure the IP address of the DHCP server.
- C. Enable the DHCP relay agent.
- D. Verify the DHCP snooping bindings.

Answer: B

Explanation:

https://www.cisco.com/c/en/us/td/docs/switches/datacenter/sw/4_0/dcnm/security/configuration/guide/sec_dcnm Text Description automatically generated

Configuring a DHCP Server Address on a VLAN Interface

You can configure a DHCP server IP address on a VLAN interface (sometimes referred to as a switched virtual interface or SVI). When an inbound DHCP BOOTREQUEST packet arrives on the VLAN interface, the relay agent forwards the packet to the IP address specified.

NEW QUESTION 334

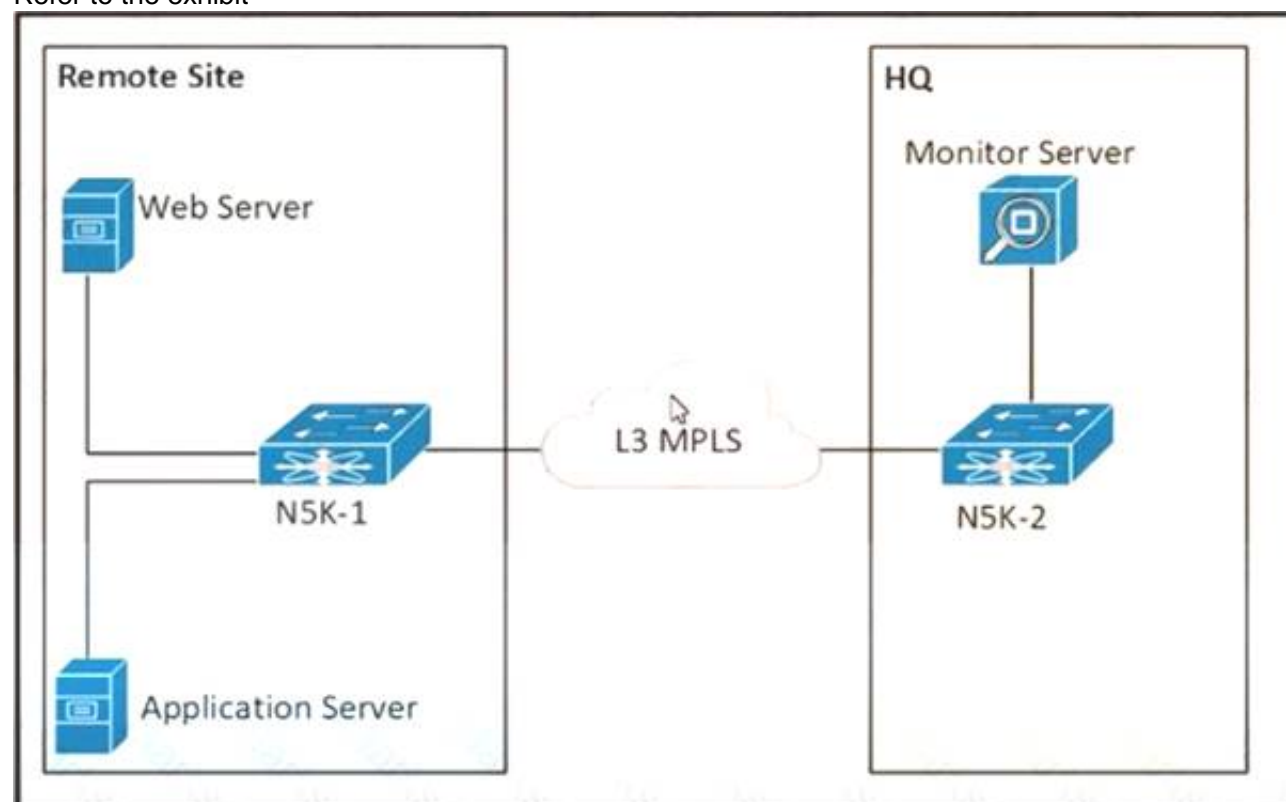
An engineer must suggest a deployment model for a newly developed application. The engineer has a small starting budget and lacks technical knowledge and infrastructure to implement storage, operating system, and database services to support the application deployment. The engineer also needs usage data related to the service and the ability to elastically scale the deployment as customer demands grow. Which two models must be used to meet the requirements? (Choose two.)

- A. private cloud
- B. platform as a service
- C. software as a service
- D. infrastructure as a service
- E. public cloud

Answer: DE

NEW QUESTION 338

Refer to the exhibit



The communication between the web server and the application server experiences poor performance. The network engineer must collect the traffic between the two servers, including the payload for more investigation. The collected data must be sent from the remote site to the headquarters. Which action accomplishes this goal?

- A. Configure an ERSPAN session between N5K-1 and N5K-2.
- B. Configure a SPAN session between N5K-1 and N5K-2.
- C. Configure SNMP on N5K-1 to send the data to the monitor server.
- D. Configure NetFlow on N5K-1 to send the data to the monitor server.

Answer: A

NEW QUESTION 343

An engineer must apply AAA configuration on a Cisco MDS 9000 Series Switch. The solution must meet these conditions:

- It must use a challenge-response authentication protocol that uses MD5 hashing with an incrementally changing identifier
- The RADIUS configuration must t>e automatically shared with other MDS switches in the environment.

The RADIUS server is already defined. Which command set completes the configuration?

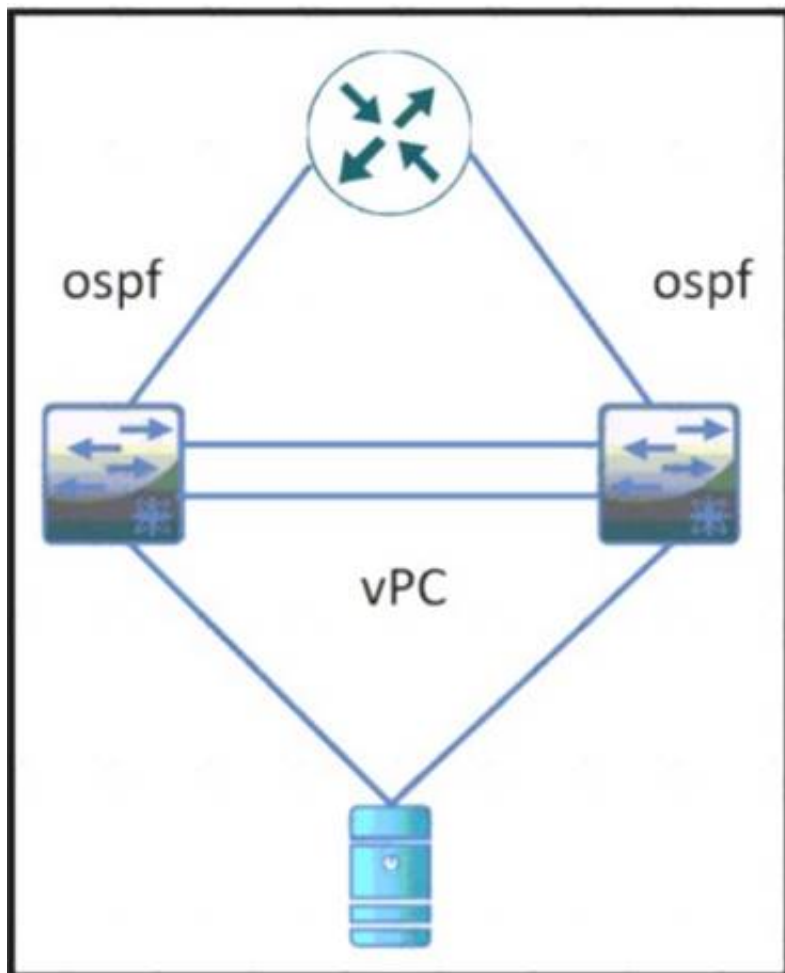
- ☐ aaa authentication login pap enable
 distribute radius
 radius-server host 10.8.8.0 auth-port 1821
- ☐ aaa authentication login mschapv2 enable
 radius propagate
 radius authentication port 1821
- ☐ aaa authentication login chap enable
 radius distribute
 radius commit
- ☐ aaa authentication login mschap enable
 radius commit
 radius-server host 10.8.8.0

- A. Option A
- B. Option B
- C. Option C
- D. Option D

Answer: C

NEW QUESTION 345

Refer to the exhibit



During a vPC peer switch reload, there is packet loss between the server and the router Which action must be taken to prevent this behavior during future reloads?

- A. Set the routed uplink ports of the Cisco Nexus peers as orphans.
- B. Increase the vPC delay restore timer.
- C. Decrease the OSPF hello and dead interval timers.
- D. Disable vPC ARP synchronize on the vPC peers.

Answer: B

NEW QUESTION 348

AN engineer enters these commands while in EEM on a Cisco Nexus 9000 Series Switch. event manager applet Backup-config event timer watchdog time 1800 name timer
 event cli match "copy running-config startup-config" what is the result of applying this configuration?

- A. It saves the running configuration every 1800 seconds.
- B. It generates an error because no action is mentioned.
- C. It executes the copy running-config startup-config command.
- D. It blocks the copy running-config startup-config command.

Answer: B

Explanation:

<https://www.cisco.com/c/en/us/td/docs/switches/datacenter/nexus9000/sw/93x/system-management/b-cisco-nex>
 Graphical user interface, text, application, email Description automatically generated

Prerequisites for EEM

EEM has the following prerequisites:

- You must have network-admin user privileges to configure EEM.

Guidelines and Limitations for EEM

EEM has the following configuration guidelines and limitations:

- The maximum number of configurable EEM policies is 500.
- Action statements within your user policy or overriding policy should not negate each other or adversely affect the associated system policy.
- To allow a triggered event to process any default actions, you must configure the EEM policy to allow the default action. For example, if you match a CLI command in a match statement, you must add the event-default action statement to the EEM policy or EEM will not allow the CLI command to execute.
- When you configure an EEM policy action to collect **show tech** commands, make sure to allocate enough time for the **show tech** commands to complete before the same action is called again.

NEW QUESTION 352

An engineer must remove the running configuration of a Cisco Nexus 9000 Series Switch and replace it with a backup file without restarting the switch. The backup file is stored on an SFTP server that is reachable via the An engineer must remove the running configuration mgmt0 interface Which set of commands accomplishes this task'

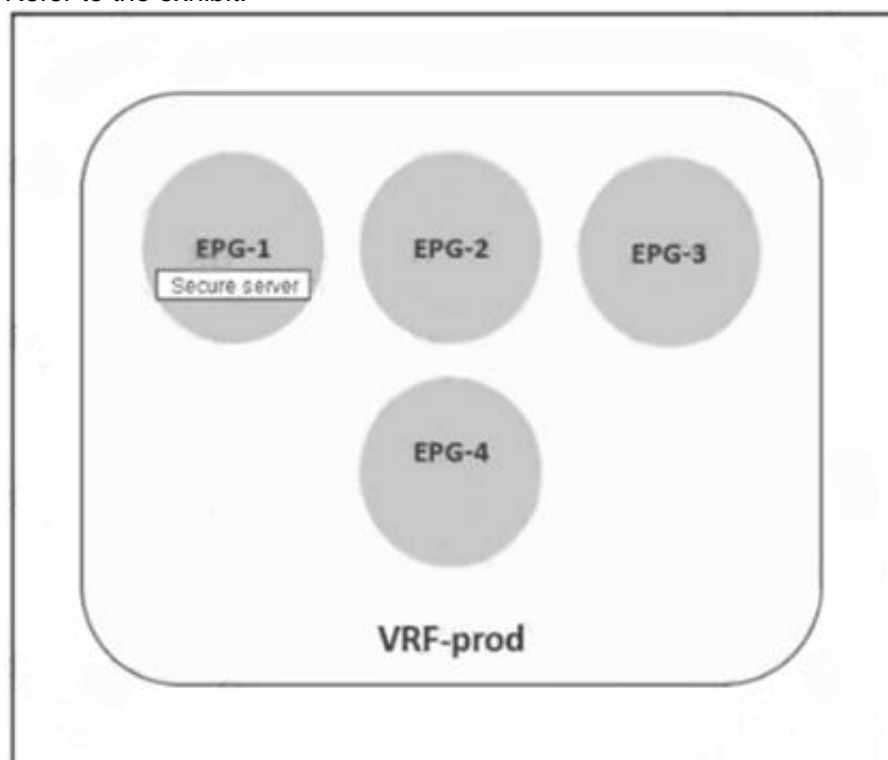
- ☐ `copy sftp://admin@192.168.10.100/backup.cfg startup-config vrf mgmt0`
`copy startup-config running-config`
- ☐ `configure replace sftp://admin@192.168.10.100/backup.cfg vrf mgmt0`
`copy running-config bootflash://startup-config`
- ☐ `copy sftp://admin@192.168.10.100/backup.cfg bootflash:///backup.cfg vrf management`
`configure replace bootflash:///backup.cfg`
- ☐ `copy sftp://admin@192.168.10.100/backup.cfg startup-config vrf management`
`reload in 10`

- A. Option A
- B. Option B
- C. Option C
- D. Option D

Answer: C

NEW QUESTION 353

Refer to the exhibit.



A secure server that provides services to EPG-2 must be placed in EPG-1. The remaining EPGs—EPG-2, EPG-3, and EPG-4—must communicate without any contracts. Which set of actions accomplishes this goal?

- ☒ Exclude EPG-2, EPG-3, and EPG-4 from the preferred group.
Configure a contract between EPG-2 and EPG-3.
- ☐ Include EPG-2, EPG-3, and EPG-4 in the preferred group.
Configure a contract between EPG-1 and EPG-2.
- ☐ Include EPG-1 and EPG-2 in the preferred group.
Configure a contract between EPG-2 and EPG-3.
- ☐ Exclude EPG-2, EPG-3, and EPG-4 from the preferred group.
Configure a contract between EPG-1 and EPG-3.

- A. Option A
- B. Option B
- C. Option C
- D. Option D

Answer: B

NEW QUESTION 355

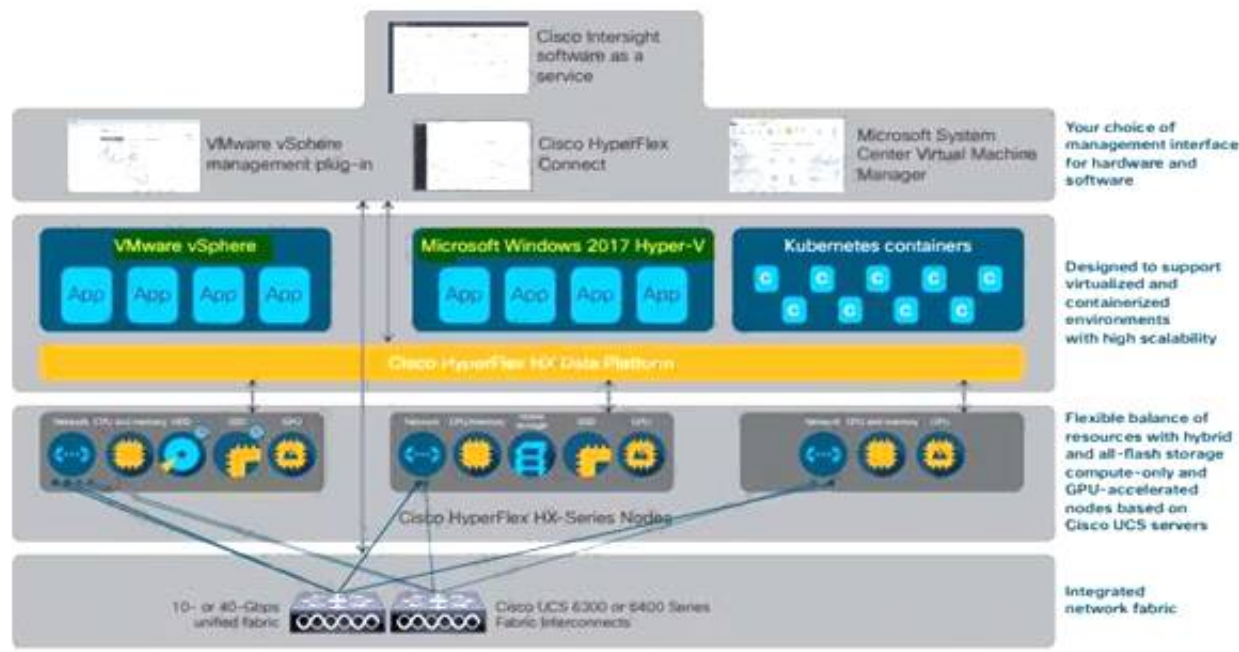
Which two hypervisors does Cisco HyperFlex support? (Choose two.)

- A. VMware vSphere
- B. Microsoft Hyper-V
- C. OpenStack
- D. Citrix XenServer
- E. RedHat KVM

Answer: AB

Explanation:

The Cisco HyperFlex platform is faster to deploy, simpler to manage, easier to scale, and ready to provide a unified pool of resources to power your business applications. You harness these resources with your choice of centralized management tools: Cisco Intersight™ software as a service, Cisco HyperFlex Connect, Microsoft System Center Virtual Machine Manager,



<https://www.cisco.com/c/dam/en/us/products/collateral/hyperconverged-infrastructure/hyperflex-hx-series/solution-overview-c22-736815.pdf>

NEW QUESTION 360

A small remote office is set to connect to the regional hub site via NSSA ASBR. Which type of LSA is sent to the remote office OSPF area?

- A. type 7 LSA
- B. type 3 LSA
- C. type 1 LSA
- D. type 5 LSA

Answer: A

NEW QUESTION 362

An engineer performs a set of configuration changes for the vPC domain using Session Manager. Which two commands are used to verify the configuration and apply the device changes when no errors are returned? (Choose two)

- A. write
- B. verify
- C. commit
- D. checkpoint
- E. apply

Answer: BC

Explanation:

https://www.cisco.com/c/en/us/td/docs/switches/datacenter/nexus9000/sw/6-x/system_management/configuration

Verifying a Session

Use the following command in session mode to verify a session:

Command	Purpose
verify [verbose] Example: switch(config-s)# verify	Verifies the configuration as a whole, based on the existing hardware and software configuration and resources. Cisco NX-OS returns an error if the configuration does not pass this verification.

Committing a Session

Use the following command in session mode to commit a session:

Command	Purpose
commit [verbose] Example: switch(config-s)# commit	Validates the configuration changes made in the current session and applies valid changes to the device. If the validation fails, Cisco NX-OS reverts to the original configuration.

<https://www.cisco.com/c/en/us/td/docs/switches/datacenter/nexus5000/sw/configuration/guide/cli/CLIConfigura>

NEW QUESTION 364

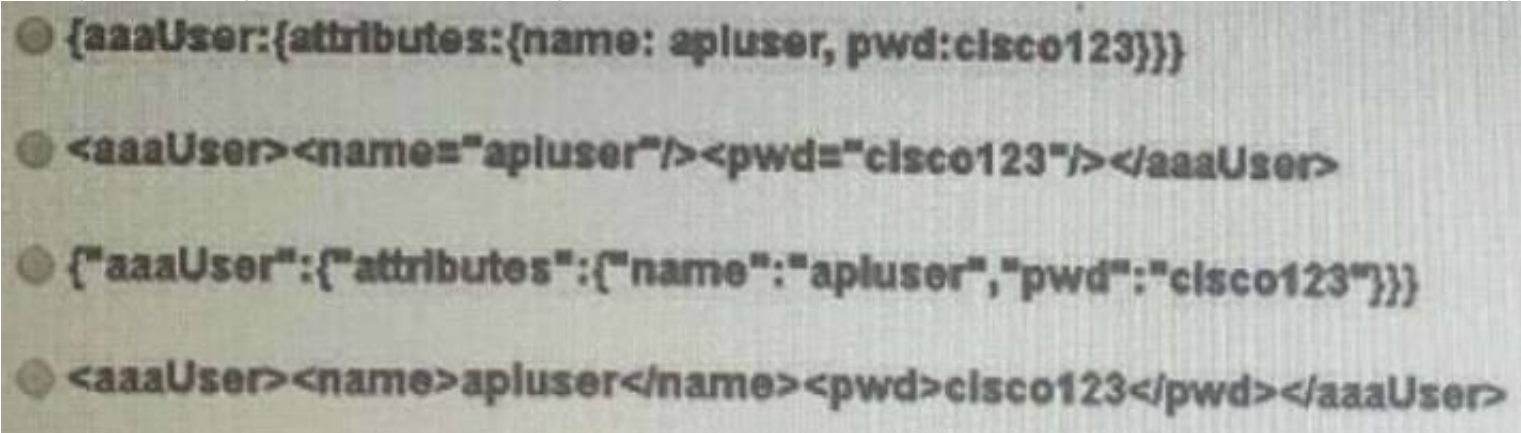
Which component is excluded by default from the host firmware package?

- A. network interface controller
- B. board controller
- C. storage controller
- D. local disk

Answer: D

NEW QUESTION 365

An engineer is using REST API calls to configure the cisco APIC. Which data structure must be used within a post message to receive a login token?



- A. Option A
- B. Option B
- C. Option C
- D. Option D

Answer: C

Explanation:

- **aaaListDomains** –Sent as a GET message, this method returns a list of valid AAA login domains. You can send this message without logging in.

You can call the authentication methods using this syntax, specifying either JSON or XML data structures:

```
{ http | https } :// host [:port] /api/ methodName . { json | xml }
```

This example shows a user login message that uses a JSON data structure:

```
POST https://apic-ip-address/api/aaaLogin.json
```

```
{
  "aaaUser" : {
    "attributes" : {
      "name" : "georgewa",
      "pwd" : "paSSword1"
    }
  }
}
```

https://www.cisco.com/c/en/us/td/docs/switches/datacenter/aci/apic/sw/2-x/rest_cfg/2_1_x/b_Cisco_APIC_REST_API_Configuration_Guide/b_Cisco_APIC_REST_API_Configuration_Guide_chapter_0

NEW QUESTION 367

An engineer implements a Python script inside a Cisco Bash shell The script contains this dictionary object

```
switch_id_list = {
    "N9K-Spine-1": "842534699747",
    "N9K-Leaf-1": "126784690",
    "N9K-Leaf-2": "56556473"
}
```

Which command must be used to add the 'NSK-Spine-2': '1498323434' element to the switch_id list dictionary?

- ☒ switch_id_list = [{"N9K-Spine-2": "1498323434"}]
- ☐ switch_id_list.update({"N9K-Spine-2": "1498323434"})
- ☐ switch_id_list.append({"N9K-Spine-2": "1498323434"})
- ☐ switch_id_list += {"N9K-Spine-2": "1498323434"}

- A. Option A
- B. Option B
- C. Option C
- D. Option D

Answer: C

NEW QUESTION 369

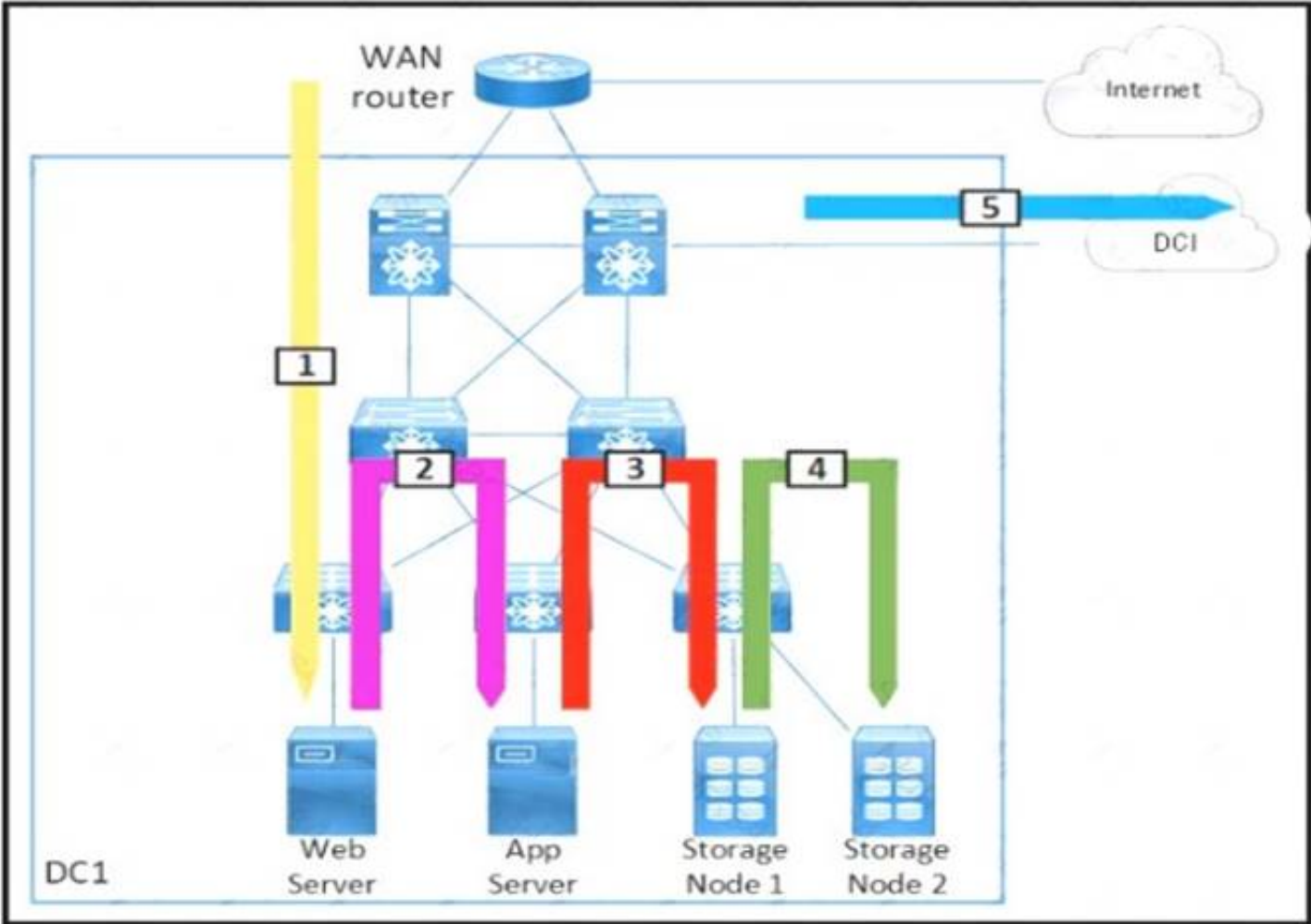
An engineer is deploying a VXLAN EVPN environment for a customer. The customers environment suffers from a large amount of flooding related to hosts attempting to resolve the MAC to IP mapping on the network segment. Which feature prevents this issue from happening in the future?

- A. anycast rendezvous point
- B. anycast gateway
- C. IP ARP SYNC
- D. IP ARP suppression

Answer: D

NEW QUESTION 370

Refer to the exhibit.



Drag and drop each traffic flow type from the left onto the corresponding number on the right Not all traffic flow types are used

Inter-Data Center	1
East-West	2
North-West	3
North-South	4
South-West	5
Storage Traffic	
Storage Replication	

- A. Mastered
- B. Not Mastered

Answer: A

Explanation:
Table Description automatically generated

NEW QUESTION 372

A network administrator must perform a system upgrade on a Cisco MDS 9000 Series Switch. Due to the recent changes by the security team:

- The AAA server is unreachable.
- All TCP communication between the MDS 9000 Series Switch and AAA servers is disabled. Which actions must be used to perform the upgrade?

- A. Log in locally to the MDS 9000 Series Switch using a network-admin role and download the upgrade files from the remote TFTP server.
- B. Log in locally to the MDS 9000 Series Switch using a server-admin role and download the upgrade files from the remote FTP server.
- C. Log in to a server storing the upgrade files remotely using a server-admin role and download the files to the MDS 9000 Series Switch using SFTP.
- D. Log in to a server storing the upgrade files remotely using a network-admin role and download the files to the MDS 9000 Series Switch using HTTP.

Answer: A

NEW QUESTION 375

Refer to the exhibit.


```
Nexus(config)# show checkpoint summary
User Checkpoint Summary
-----
1) BeforeL3:
Created by admin
Created at Mon, 15:25:08 31 Dec 2018
Size is 9,345 bytes
Description: None

System Checkpoint Summary
-----
2) system-fm-vrrp:
Created by admin
Created at Fri, 09:57:02 14 Jun 2019
Size is 20,865 bytes
Description: Created by Feature Manager.

3) system-fm-hsrp_engine:
Created by admin
Created at Fri, 09:57:28 14 Jun 2019
Size is 20,852 bytes
Description: Created by Feature Manager.
```

What is the reason the system-fm-vrrp checkpoint was created?

- A. The VRRP service restarted and the checkpoint was automatically created.
- B. The network administrator manually created it.
- C. The VRRP process crashed and the checkpoint was automatically created.
- D. The VRRP-enable feature has been disabled.

Answer: D

Explanation:

automatically created by the Nexus when the vrrp feature is disabled

NEW QUESTION 380

A network architect is asked to design and manage geographically distributed data centers across cities and decides to use a Multi-Site Orchestrator deployment. How many orchestrators should be deployed?

- A. 3
- B. 5
- C. 4
- D. 2

Answer: A

Explanation:

<https://www.cisco.com/c/en/us/solutions/collateral/data-center-virtualization/application-centricinfrastructure/w>

NEW QUESTION 385

An engineer must configure two Cisco Nexus 7000 series switches in the same data center to support OTV. Which command set completes the join interface configuration?

An engineer must configure two Cisco Nexus 7000 Series switches in the same data center to support OTV. Which command set completes the join interface configuration?

```
feature otv
otv site-identifier 256
interface overlay 1
otv control-group 239.1.1.1
otv data-group 239.1.1.0/29
otv join-interface ethernet 2/1
otv extend-vlan 5-10
no shutdown
```

- ☒ Edge Device 1
interface ethernet 2/1
ip address 192.0.2.1/24
ip igmp version 3
- Edge Device 2
interface ethernet 2/1
ip address 192.0.2.16/24
ip igmp version 3
- ☐ Edge Device 1
interface ethernet 2/1
ip address 192.0.2.1/24
ip igmp version 3
ip pim sparse-mode
- Edge Device 2
interface ethernet 2/1
ip address 192.0.2.16/24
ip igmp version 3
ip pim sparse-mode
- ☐ Edge Device 1
interface ethernet 2/1
ip address 192.0.2.1/24
- Edge Device 2
interface ethernet 2/1
ip address 192.0.2.16/24
- ☐ Edge Device 1
interface ethernet 2/1
ip address 192.0.2.1/24
ip igmp version 3
- Edge Device 2
interface ethernet 2/1
ip address 192.0.2.1/24
ip igmp version 3

- A. Option A
B. Option B
C. Option C
D. Option D

Answer: A

NEW QUESTION 390

An engineer must design an automation solution for the Cisco ACI Fabric to speed up the deployment of logical network elements for tenant provisioning. When creating a solution, the engineer must keep in mind that the tool must support these requirements:

- Allow the rapid creation and removal of logical containers.
- Support the creation of custom modules and data structures.
- Be extensible with external libraries and modules.
- Allow rapid testing of code using an on-demand execution environment.

Which automation tool meets these requirements?

- A. YAML
B. Chef
C. SaltStack
D. Python

Answer: B

NEW QUESTION 393

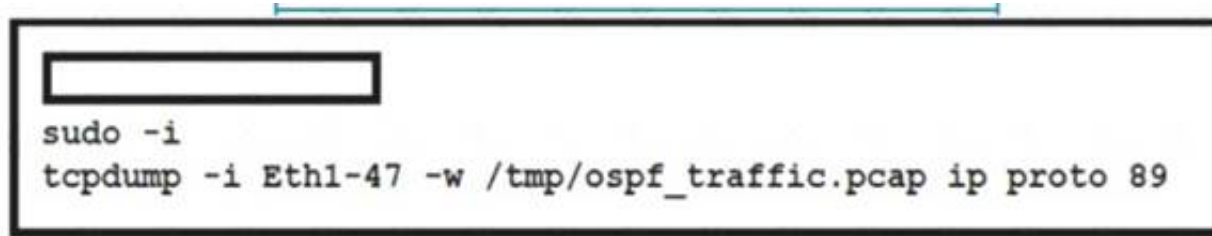
An infrastructure architect is analyzing the deployment type for an application. Several companies must be able to operate the application environment and integrate it with a third-party protocol. The development team also must have maximum control over their development environment, including the operating system used, Python interpreter, and corresponding libraries. Which cloud deployment solution meets these requirements?

- A. public cloud Storage as a Service
B. private cloud Platform as a Service
C. hybrid cloud Software as a Service
D. community cloud Infrastructure as a Service

Answer: D

NEW QUESTION 396

Refer to the exhibit.



```
sudo -i  
tcpdump -i Eth1-47 -w /tmp/ospf_traffic.pcap ip proto 89
```

A network engineer is using tcpdump to capture a snapshot of OSPF-related traffic on a specific Cisco NX-OS switch port. For security reasons, the capture must be taken using an embedded container that is already deployed on the Cisco Nexus device. Which command completes the script?

- A. guestshell
- B. guestshell-bash
- C. run guestshell
- D. run bash

Answer: A

NEW QUESTION 398

What is an advantage of NFSv4 over Fibre Channel protocol?

- A. Improved security
- B. Lossless throughout
- C. Congestion management
- D. Uses IP transport

Answer: A

Explanation:

<https://www.rcannings.com/san-storage-fc-vs-fcoe-vs-iscsi/>

NEW QUESTION 400

.....

Thank You for Trying Our Product

We offer two products:

1st - We have Practice Tests Software with Actual Exam Questions

2nd - Questions and Answers in PDF Format

350-601 Practice Exam Features:

- * 350-601 Questions and Answers Updated Frequently
- * 350-601 Practice Questions Verified by Expert Senior Certified Staff
- * 350-601 Most Realistic Questions that Guarantee you a Pass on Your First Try
- * 350-601 Practice Test Questions in Multiple Choice Formats and Updates for 1 Year

100% Actual & Verified — Instant Download, Please Click
[Order The 350-601 Practice Test Here](#)