

Exam Questions 300-420

Designing Cisco Enterprise Networks (ENSLD)

<https://www.2passeasy.com/dumps/300-420/>



NEW QUESTION 1

A company is running BGP on a single router, which has two connections to the same ISP. Which BGP feature ensures traffic is load balanced across the two links to the ISP?

- A. Multihop
- B. Multipath Load Sharing
- C. Next-Hop Address Tracking
- D. AS-Path Prepending

Answer: B

NEW QUESTION 2

What are two valid scaling techniques when an EIGRP network is designed that consists of more than 1000 routers? (Choose two.)

- A. Use structured hierarchical topology with route summarization
- B. Used sub-second timers
- C. Use the distribute-list command to filter routes
- D. Modify delay parameters on the links
- E. Implement multiple EIGRP autonomous systems

Answer: AE

NEW QUESTION 3

An engineer is designing a QoS policy that queues excess packets for later transmission. Which mechanism must be included in the design?

- A. shaping
- B. WRED
- C. policing
- D. RED

Answer: A

NEW QUESTION 4

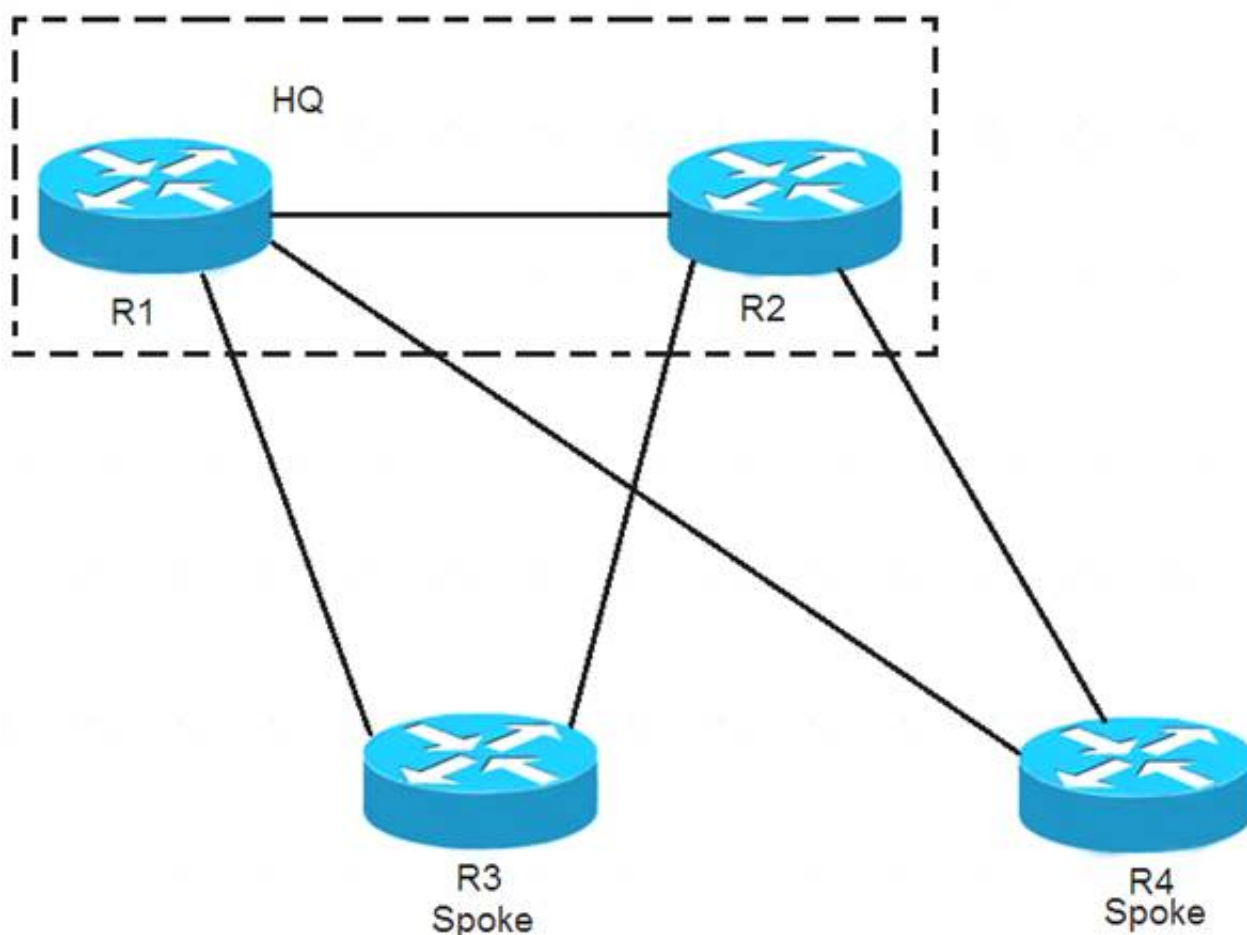
What is a benefit of using VRRPv3 as compared to VRRPv2?

- A. VRRPv3 supports IPv4 and IPv6
- B. VRRPv3 supports authentication
- C. VRRPv3 supports preemption
- D. VRRPv3 supports stateful switchover

Answer: A

NEW QUESTION 5

Refer to the exhibit.



EIGRP has been configured on all links. The spoke nodes have been configured as EIGRP stubs, and the WAN links to R3 have higher bandwidth and lower delay than the links to R4. When a link failure occurs at the R1-R2 link, what happens to traffic on R1 that is destined for a subnet attached to R2?

- A. R1 has no route to R2 and drops the traffic

- B. R1 load-balances across the paths through R3 and R4 to reach R2
- C. R1 forwards the traffic to R3, but R3 drops the traffic
- D. R1 forwards the traffic to R3 in order to reach R2

Answer: D

NEW QUESTION 6

Which design consideration must be made when dual vEdge routers are deployed at a branch site?

- A. Use BGP AS-path prepending to influence egress traffic and use MED to influence ingress traffic from the branch.
- B. HSRP priorities must match the OMP routing policy to prefer one vEdge over the other.
- C. Traffic must be symmetrical as it egresses the vEdges and returns from remote sites for DPI to function properly.
- D. Configure BFD between vEdge routers to detect sub-second link failures.

Answer: A

NEW QUESTION 7

What is one function of the vSmart controller in an SD-WAN deployment?

- A. orchestrates vEdge and cEdge connectivity
- B. responsible for the centralized control plane of the SD-WAN network
- C. provides centralized network management and a GUI to monitor and operate the SD-WAN overlay
- D. provides a data-plane at branch offices to pass traffic through the SD-WAN network

Answer: B

NEW QUESTION 8

Which QoS feature responds to network congestion by dropping lower priority packets?

- A. CBWFQ
- B. tail drop
- C. WRED
- D. strict priority

Answer: C

NEW QUESTION 9

An engineer must design a multicast network for a financial application. Most of the multicast sources also receive multicast traffic (many-to-many deployment model). To better scale routing tables, the design must not use source trees. Which multicast protocol satisfies these requirements?

- A. PIM-SSM
- B. PIM-SM
- C. MSDP
- D. BIDIR-PIM

Answer: B

NEW QUESTION 10

Which nonproprietary mechanism can be used to automate rendezvous point distribution in a large PIM domain?

- A. Embedded RP
- B. BSR
- C. Auto-RP
- D. Static RP

Answer: B

NEW QUESTION 10

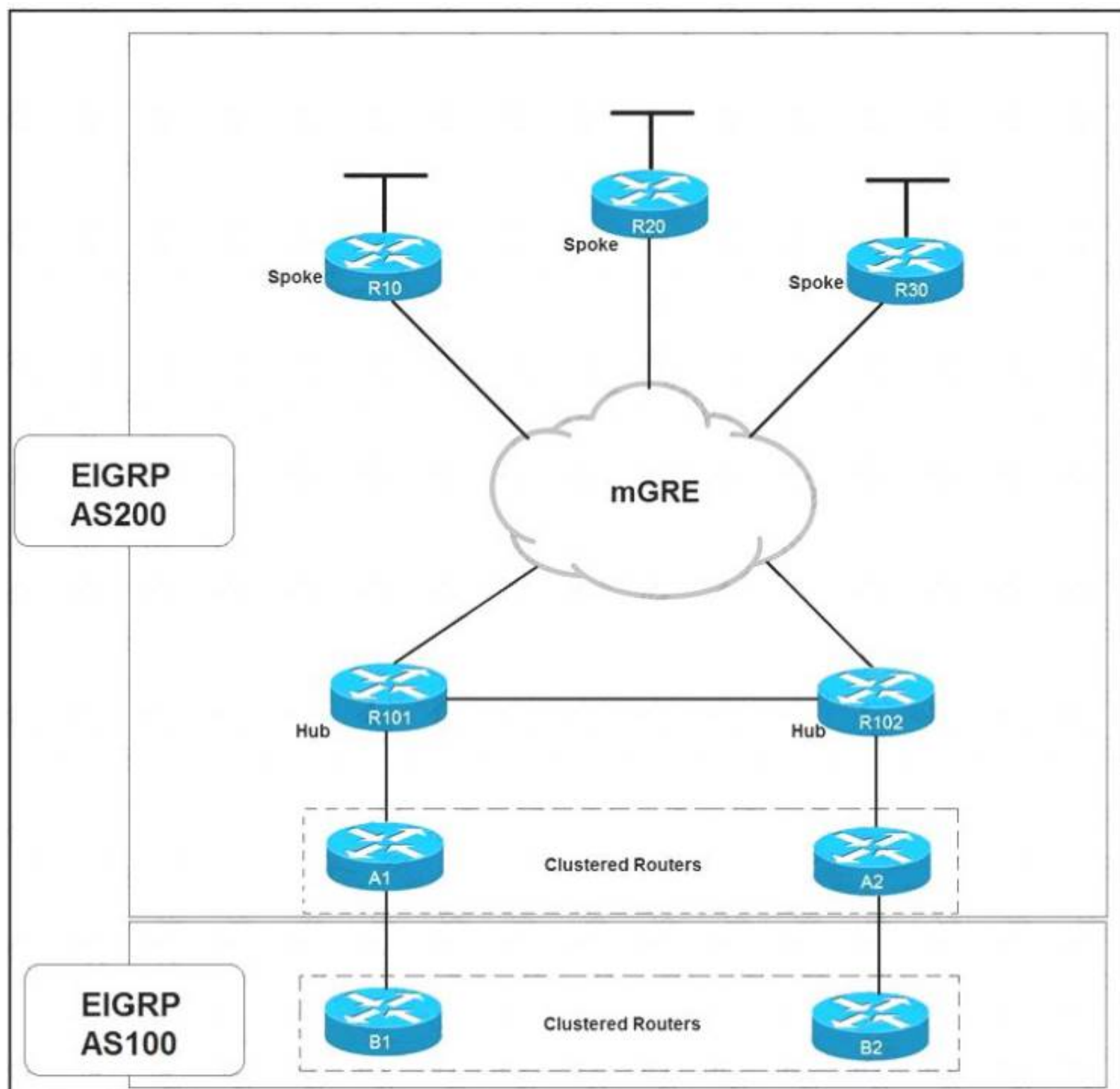
Which method will filter routes between EIGRP neighbors within the same autonomous system?

- A. distribute-list
- B. policy-based routing
- C. leak-map
- D. route tagging

Answer: A

NEW QUESTION 13

Refer to the exhibit.



Which solution decreases the EIGRP convergence time?

- A. Enable subsecond timers
- B. Increase the hold time value
- C. Increase the dead timer value
- D. Enable stub routing on the spokes

Answer: D

NEW QUESTION 14

When a network is designed using IS-IS protocol, which two circuit types are supported? (Choose two.)

- A. nonbroadcast multiaccess
- B. multiaccess
- C. point-to-multipoint
- D. nonbroadcast
- E. point-to-point

Answer: BE

NEW QUESTION 18

Which function are fabric intermediate nodes responsible for in an SD-Access Architecture?

- A. mapping EIDs to RLOCs
- B. encapsulating user traffic in a VXLAN header including the SGT
- C. registering new endpoints in the HTDB
- D. transporting IP packets between edge nodes and border nodes

Answer: D

NEW QUESTION 19

What is the purpose of an edge node in an SD-Access network fabric?

- A. Edge nodes identify and authenticate endpoints and register endpoint information with control plane nodes.
- B. Edge nodes track endpoint IDs to location mappings, along with IPv4, IPv6, or MAC addresses.

- C. Edge nodes are the gateway between the fabric domain and network outside of the fabric.
- D. Edge nodes resolve lookup requests from edge and border nodes to locate destination endpoint IDs.

Answer: A

NEW QUESTION 23

When IPsec VPNs are designed, what is a unique requirement if support for IP Multicast is required?

- A. encapsulation of traffic with GRE or VTI
- B. IPsec forwarding using transport mode
- C. additional bandwidth for headend
- D. IPsec forwarding using tunnel mode

Answer: A

NEW QUESTION 28

Which design consideration must be made when using IPv6 overlay tunnels?

- A. Overlay tunnels that connect isolated IPv6 networks can be considered a final IPv6 network architecture.
- B. Overlay tunnels should only be considered as a transition technique toward a permanent solution.
- C. Overlay tunnels can be configured only between border devices and require only the IPv6 protocol stack.
- D. Overlay tunneling encapsulates IPv4 packets in IPv6 packets for delivery across an IPv6 infrastructure.

Answer: C

NEW QUESTION 29

What are two benefits of designing an SD-WAN network fabric with direct Internet access implemented at every site? (Choose two.)

- A. It decreases latency to applications hosted by public cloud service provider.
- B. It decreases latency on Internet circuits.
- C. It increases the speed of delivery of site deployments through zero-touch provisioning.
- D. It increases the total available bandwidth on Internet circuits.
- E. It alleviates network traffic on MPLS circuits.

Answer: AE

NEW QUESTION 31

How do endpoints inside an SD-Access network reach resources outside the fabric?

- A. a VRF fusion router is used to map resources in one VN to another VN
- B. Fabric borders use VRFs to map VNs to VRFs
- C. SD-Access transit links are used to transport encapsulated traffic from one fabric to another
- D. A fabric edge is used to de-encapsulate VXLAN traffic to normal IP traffic then transported over the outside network

Answer: D

NEW QUESTION 33

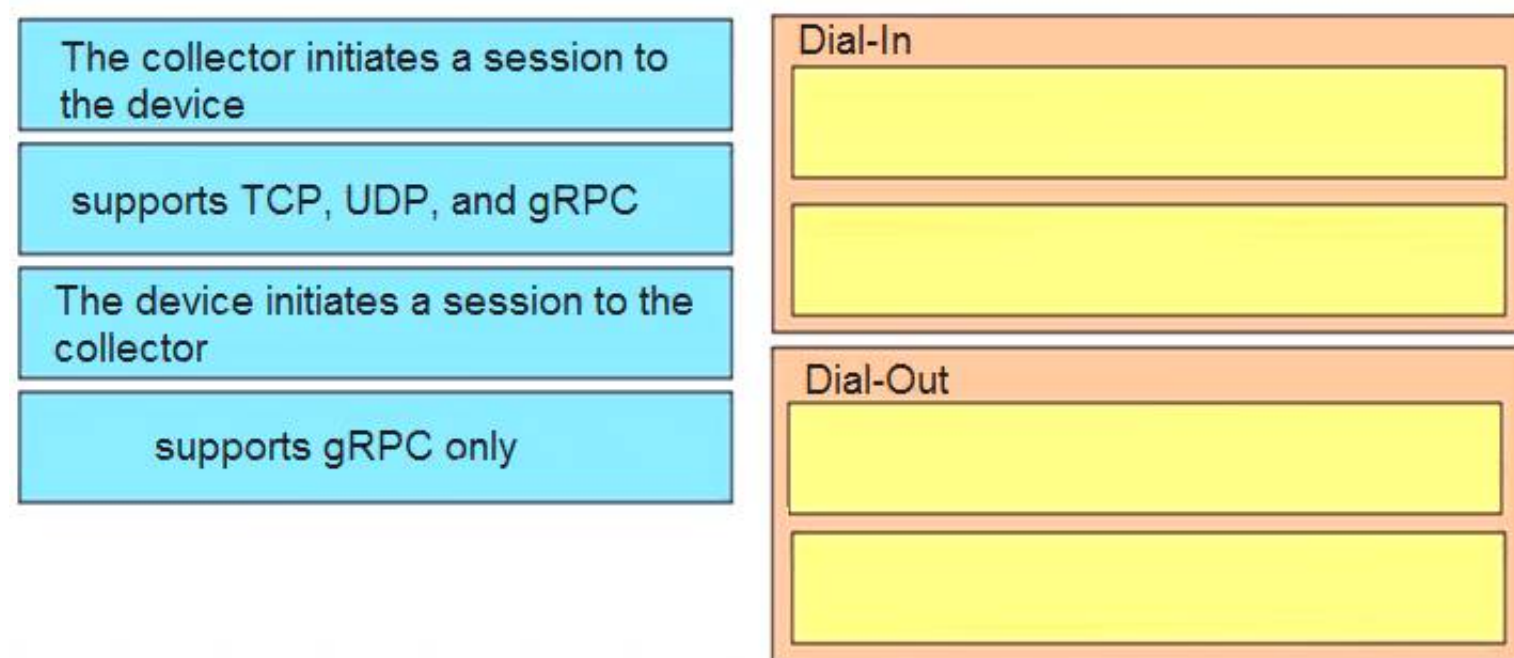
An engineer is working with NETCONF and Cisco NX-OS based devices. The engineer needs a YANG model that supports a specific feature relevant only to Cisco NX-OS. Which model must the engineer choose?

- A. Native
- B. IEEE
- C. OpenConfig
- D. IETF

Answer: D

NEW QUESTION 37

Drag and drop the characteristics from the left onto the correct telemetry mode on the right.



- A. Mastered
- B. Not Mastered

Answer: A

Explanation:

In a dial-in mode, the destination initiates a session to the router and subscribes to data to be streamed. Dialin mode is supported over gRPC in only 64-bit platforms

In a dial-out mode, the router initiates a session to the destinations based on the subscription. All 64-bit IOS XR platforms (except for NCS 6000 series routers) support gRPC and TCP protocols. All 32-bit IOS XR platforms support only TCP.

NEW QUESTION 38

A company is using OSPF between its HQ location and a branch office. HQ is assigned area 0 and the branch office is assigned area 1. The company purchases a second branch office, but due to circuit delays to HQ, it decides to connect the new branch office to the existing branch office as a temporary measure. The new branch office is assigned area 2. Which OSPF configuration enables all three locations to exchange routes?

- A. The existing branch office must be configured as a stub area
- B. A virtual link must be configured between the new branch office and HQ
- C. A sham link must be configured between the new branch office and HQ
- D. The new branch office must be configured as a stub area

Answer: B

NEW QUESTION 40

.....

THANKS FOR TRYING THE DEMO OF OUR PRODUCT

Visit Our Site to Purchase the Full Set of Actual 300-420 Exam Questions With Answers.

We Also Provide Practice Exam Software That Simulates Real Exam Environment And Has Many Self-Assessment Features. Order the 300-420 Product From:

<https://www.2passeasy.com/dumps/300-420/>

Money Back Guarantee

300-420 Practice Exam Features:

- * 300-420 Questions and Answers Updated Frequently
- * 300-420 Practice Questions Verified by Expert Senior Certified Staff
- * 300-420 Most Realistic Questions that Guarantee you a Pass on Your FirstTry
- * 300-420 Practice Test Questions in Multiple Choice Formats and Updatesfor 1 Year