



## **Cisco**

### **Exam Questions 200-901**

Developing Applications and Automating Workflows using Cisco Core Platforms (DEVASC)

## About ExamBible

*[Your Partner of IT Exam](#)*

## Found in 1998

ExamBible is a company specialized on providing high quality IT exam practice study materials, especially Cisco CCNA, CCDA, CCNP, CCIE, Checkpoint CCSE, CompTIA A+, Network+ certification practice exams and so on. We guarantee that the candidates will not only pass any IT exam at the first attempt but also get profound understanding about the certificates they have got. There are so many alike companies in this industry, however, ExamBible has its unique advantages that other companies could not achieve.

## Our Advances

### \* 99.9% Uptime

All examinations will be up to date.

### \* 24/7 Quality Support

We will provide service round the clock.

### \* 100% Pass Rate

Our guarantee that you will pass the exam.

### \* Unique Gurantee

If you do not pass the exam at the first time, we will not only arrange FULL REFUND for you, but also provide you another exam of your claim, ABSOLUTELY FREE!

### NEW QUESTION 1

- (Exam Topic 2)

Which application should be used to externally access all applications deployed in the same host machine with a single public IP address and port, when each application listens on different local ports?

- A. reverse proxy
- B. load balancer
- C. DNS
- D. firewall

**Answer: D**

### NEW QUESTION 2

- (Exam Topic 2)

Refer to the exhibit.

```
1  - hosts: servers
2    tasks:
3
4      - name: task1
5        systemd:
6          name: webexbot
7          state: stopped
8
9      - name: task2
10       apt:
11         name: teamsbot
12
13     - name: task3
14       apt:
15         name: webexbot
16         state: absent
17         purge: yes
```

A developer must integrate a bot with an internal communication app. The developer wants to replace the webexbot package with the teamsbot package by using Ansible and prepares a playbook. In the first two tasks, the playbook stops the webexbot and verifies that the teamsbot is installed. What is accomplished in the last task of the workflow when the developer runs the Ansible playbook?

- A. stops the webexbot service and uninstalls it and retains its configuration files
- B. installs the webexbot and retains the configuration files
- C. uninstalls the webexbot package and removes its configuration files
- D. searches whether the purge package is available in the repository and uninstalls the webexbot package

**Answer: C**

### NEW QUESTION 3

- (Exam Topic 2)

Refer to the exhibit.

```
1  from requests import request
2  from requests.auth import HTTPBasicAuth
3  from sys import argv
4  url = "https://" + argv[1] + ":443/restconf/data/native/ip/route"
5  auth = HTTPBasicAuth('developer', 'Cisco12345')
6  payload = {
7      "Cisco-IOS-XE-native:route": {
8          "ip-route-interface-forwarding-list": [
9              {
10                 "prefix": argv[2],
11                 "mask": argv[3],
12                 "fwd-list": [
13                     {
14                         "fwd": "GigabitEthernet2",
15                         "interface-next-hop": [
16                             {
17                                 "ip-address": argv[4]
18                             }
19                         ]
20                     }
21                 ]
22             }
23         ]
24     }
25 }
26 headers = {
27     'Content-Type': 'application/yang-data+json',
28     'Accept': 'application/yang-data+json',
29 }
30 response = request("PATCH", url, auth=auth, headers=headers, json = payload,
31                     verify=False)
```

A network engineer must change the configuration on devices daily. The Python script must collect CLI arguments from the user, organize data according to the Cisco-IOS-XE-native YANG model, and utilize Cisco REST APIs to make the configuration. Which workflow is being automated by the Python script?

- A. updating an existing route on the device
- B. adding a new route to a device
- C. including a route on the device and overwriting the current routes
- D. deleting the route that is passed through the command-line variables

**Answer:** A

#### NEW QUESTION 4

- (Exam Topic 2)

Access to the management interface of devices must be restricted by using SSH and HTTPS. Which two ports must be included in the ACLs for the protocols to work? (Choose two.)

- A. 22
- B. 23
- C. 80
- D. 443
- E. 880

**Answer:** AD

#### NEW QUESTION 5

- (Exam Topic 2)

A company wants to accelerate the adoption of technologies that will simplify its operations. Staff have different skill levels and are looking for a single site to find easy-to-consume beginner, intermediate, and advanced multidomain use cases. Which site should be used?

- A. DevNet Ecosystem Exchange
- B. DevNet Automation Exchange
- C. DevNet Creations
- D. DevNet Support Forum

**Answer:** D

#### NEW QUESTION 6

- (Exam Topic 2)

Refer to the exhibit.

```
import requests
from requests.auth import HTTPBasicAuth
from config import url, username, password
response = requests.login(url, auth=HTTPBasicAuth (username, password), verify=False)
print response.status_code
```

The script returns an output of 401. To use the supplied URL, an HTTP GET request must be sent with an Authorization header. The header value is a Base64 encoded concatenation of the username and password. Which action must be taken to return an output of 200?

- A. Change the verify=False setting in the request to verify=True to enable HTTP Basic authentication
- B. Modify the method from LOGIN to GET and supply the username ;password value as JSON payload
- C. Verify that the username and password values imported from the configuration file are still valid.
- D. Insert an Authorization header with the values username password from the supplied configuration file.

**Answer:** C

#### NEW QUESTION 7

- (Exam Topic 2)

While developing a real-time VoIP application on a Cisco Webex platform, users report that their voice gets chopped or parts of the conversation drop out. Which network constraint is impacting the application?

- A. latency
- B. jitter
- C. capacity
- D. delay

**Answer:** B

#### NEW QUESTION 8

- (Exam Topic 2)

Before which process is code review performed when version control is used?

- A. Branching code
- B. Merge of code
- C. Checkout of code
- D. Committing code

Answer: D

#### NEW QUESTION 9

- (Exam Topic 2)

Refer to the exhibit.

```
import requests
from requests.auth import HTTPBasicAuth
from dnac_config import DNAC, DNAC_PORT, DNAC_USER, DNAC_PASSWORD

def get_auth_token():
    url = 'https://sandboxdnac.cisco.com/dna/system/api/v1/auth/token'
    # API Endpoint: requires POST method
    

def get_device_list():
    """
    Building out function to retrieve list of devices. Using requests.get to make a call
    to the network de-vice Endpoint
    """
    token = get_auth_token() # Get Token
    url = 'https://sandboxdnac.cisco.com/api/v1/network-device'
    hdr = {'x-auth-token': token, 'content-type' : 'application/json'}
    resp = requests.get(url, headers=hdr)
    device_list = resp.json()
    print_device_list(device_list)

if __name__ == "__main__":
    get_device_list()
```

A developer creates a script to obtain a list of devices by using the Cisco DNA Center API. The remote server authorizes the request only if an authentication token is supplied in the headers. A function named `get_auth_token()` must retrieve a valid token by using HTTP Basic Authentication. Which code must be added to complete the `get_auth_token()` function?

- A. `resp = requests.post(url, auth=HTTPBasicAuth(DNAC_USER, DNAC_PASSWORD)) token = resp.json()['Token']return token`
- B. `resp = requests.post(url, auth=(DNAC_USER, DNAC_PASSWORD)) token = resp.json ()['Token']return token`
- C. `resp = http.post(url, auth=HTTPBasicAuth(DNAC_USER, DNAC_PASSWORD)) token = resp.json()['Token']return token`
- D. `resp = http.post(url, auth=(DNAC_USER, DNAC_PASSWORD)) token = resp.json()['Token']return token`

Answer: A

#### NEW QUESTION 10

- (Exam Topic 2)

What are two considerations when selecting the "best route" for a network device to reach its destination? (Choose two.)

- A. MAC address
- B. metrics
- C. administrative distance
- D. IP address
- E. subnet mask

Answer: BC

#### NEW QUESTION 10

- (Exam Topic 2)

A new application is being developed with specific platform requirements. The platform and application deployment and the ongoing platform management must be fully automated. The application includes a large database component that has significant disk I/O requirements. Which application deployment type meets the requirements?

- A. Python virtual environment
- B. virtual machine
- C. bare metal
- D. container

Answer: B

#### NEW QUESTION 14

- (Exam Topic 2)

Drag and drop the code snippets from the bottom into the Python script to write API output to a csv file. Not all options are used.

```
#!/usr/bin/env python3
import csv
import json
import 
#Create a request to grab info in api
response = requests. ('http://api.zippopotam.us/us/80301')

try:
    with open('80301.json', 'w') as outfile:
        json.dump(response.json(), outfile)
    print(.json())
except Exception as e:
    print(e)

with open('80301.csv', 'w') as outfile:
    json.dump(response.json(), outfile)
print(response.)
```

- A. Mastered  
B. Not Mastered

**Answer:** A

**Explanation:**

Graphical user interface, text, application Description automatically generated

**NEW QUESTION 17**

- (Exam Topic 2)

Refer to the exhibit.

**SDK Documentation:**

**Class: Devices**

```
Device List: get_device_list()
Get device: get_device_by_id(id)
Delete device: delete_device_by_id(id)
Device status: inventoryStatusDetail
Device Parameters:
    id
    upTime
    type
```

A Python script must delete all Cisco Catayst 9300 Series switches that have an uptime that is greater than 90 days The script must also query for the status of all the other devices Drag and drop the code from the bottom onto the bottom box the code is missing to complete the script Not at options are used



### Answer Area

```
from dnacentersdk import DNACenterAPI

device_type = "Cisco Catalyst 9300 Switch"
api_session = DNACenterAPI(
    base_url="https://sandboxdnac.cisco.com",
    username="user",password="password"
)

devices = 

for device in devices:
    if int(device.upTime.split()[0]) > 90:
        if device.type == device_type:
            output = 
            print(output)

        else:
            selected_device = 
            output = 
            print (output)
```

- A. Mastered
- B. Not Mastered

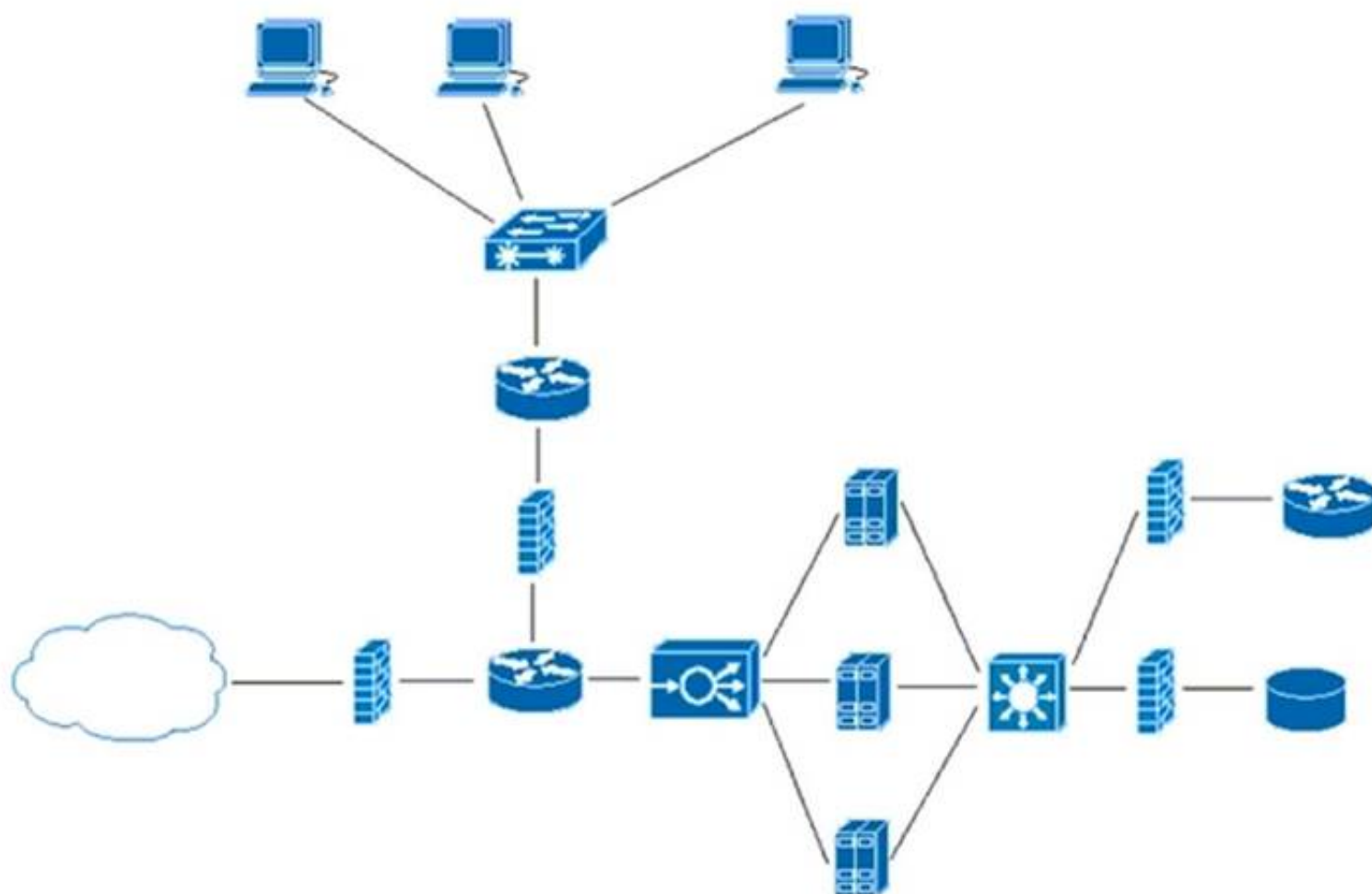
**Answer:** A

### Explanation:

Table Description automatically generated

### NEW QUESTION 19

- (Exam Topic 2)



Refer to the exhibit. What does the load balancer enable in the network topology?

- A. hosted application to access Internet services
- B. external requests to be routed to the application servers
- C. workstations to access the Internet
- D. application to access the database server

**Answer:** C

#### NEW QUESTION 24

- (Exam Topic 2)

What is the purpose of the first three pairs of digits in a MAC address?

- A. defines a routing identifier for the client
- B. indicates the IP address of the client in Hex
- C. defines packet forwarding priority sent or received by the adapter
- D. indicates vendor of the network card or adapter

**Answer:** D

#### NEW QUESTION 25

- (Exam Topic 2)

What are two use case where webhooks are effective? (Choose two.)

- A. Close a session with a web server after a specific amount of time.
- B. Filter out information from a response to an API call
- C. Change the response format or content type of an API call.
- D. Inform a previously defined chat channel after a deployment fate.
- E. Send an email to a customer of an online store after payment is complete

**Answer:** DE

#### NEW QUESTION 30

- (Exam Topic 2)

In the test-driven development model, what is changed after a test fails?

- A. test
- B. schedule
- C. project requirements
- D. code

**Answer:** D

#### Explanation:

Reference:

<https://www.guru99.com/test-driven-development.html#:~:text=In%20simple%20terms%2C%20test%20cases,c>

#### NEW QUESTION 34

- (Exam Topic 2)

Refer to the exhibit.

```
# base image
FROM alpine

# Install python and pip
RUN apk add --update py2-pip

# Install python modules needed by the python app
COPY requirements.txt /usr/src/app/
RUN pip install --no-cache-dir -r /usr/src/app/requirements.txt

#copy local files for the app to run
COPY app.py /usr/src/app/
COPY templates/index.html /usr/src/app/templates/

EXPOSE 8080

#run the application
CMD ["python", "/usr/src/app/app.py"]
```

Which function does the EXPOSE line perform when building an image from this Dockerfile?

- A. Local port 8080 of the container that launched with this docker image is accessible from co-hosted containers and external clients.
- B. Local port 8080 is not reachable at all because no IP address is specified along with the EXPOSE command of the Dockerfile.
- C. Local port 8080 is accessible from other containers running on the same docker host as the container that launched with this docker image.
- D. Local port 8080 of the container that launched with this docker image is accessible to external clients.

**Answer:** C

#### Explanation:

By default, the EXPOSE instruction does not expose the container's ports to be accessible from the host. In other words, it only makes the stated ports available for inter-container interaction.

Whereas publishing a port using either -P or -p exposes it, exposing a port using EXPOSE or --expose does not publish it.

So, while exposed ports can only be accessed internally, published ports can be accessible by external containers and services.



<https://www.whitesourcesoftware.com/free-developer-tools/blog/docker-expose-port/>

#### NEW QUESTION 38

- (Exam Topic 2)

A new application is being developed that must be hardware independent. The application includes an administrative component which is accessed using a Windows desktop GUI. Installation and management of the environment must be fully automated. Which application deployment type meets the requirements?

- A. bare metal
- B. virtual Python environment
- C. container
- D. virtual machine

**Answer: C**

#### NEW QUESTION 41

- (Exam Topic 2)

Refer to the exhibit.

```
user_manager.py
1  import psycopg2
2  import json, sys
3
4  # Load config file
5  config = None
6  with open('config.json') as config_file:
7      config = json.load(config_file)
8  if not config:
9      print("Error loading configuration file.")
10     sys.exit(1)
11
12 connection = psycopg2.connect(
13     database="users",
14     host=config["DB_USER"], user=config["DB_USER"], password=config["DB_PWD"]
15 )
16 connection.set_session()
17
18 def has_admin_role(username):
19     with connection.cursor() as cursor:
20         query = 'SELECT admin_role FROM users WHERE username = {0}'
21         cursor.execute(query.format(username))
22         result = cursor.fetchone()
23     return result
24
25 has_admin_role("ops.shared")

config.json
1  {
2      "DB_USER": "pguser",
3      "DB_PWD": "@123Qwer%4",
4      "DB_HOST": "devnetdb.example.com"
5  }
```

An engineer must check the admin rights of users on a database regularly and prepares the Python script to automate the process. The script connects to the database and runs a query. What is a security issue about the secrets in the code that relates to secret protection?

- A. They must be stored in configuration files if there is a possibility of leakage.
- B. They must be Base64-encoded if stored in the user database.
- C. They must be encrypted if stored in the user database.
- D. They must be stored in configuration files if no authentication will be used.

**Answer: D**

#### NEW QUESTION 43

- (Exam Topic 2)

Refer to the exhibit.

```
Code:
import requests

url = 'https://en.wikipedia.org/api/rest_v1/page/title/Cisco_Systems'
s = requests.Session()

def get_json(session=None, url="https://example.com"):
    try:
        if not session or type(session) is not requests.sessions.Session:
            raise Exception("Invalid session type")

        r = session.get(url)

        if r.status_code < 200 or r.status_code > 307:
            raise Exception("Status Code not within 2xx and 3xx")

        return r.json()

    except requests.exceptions.RequestException as e:
        raise e("Request failed")
    finally:
        session.close()

if __name__ == "__main__":
    items = get_json(session=s, url=url)
    [ ]

payload:
{'items': [{'title': 'Cisco Systems', 'page_id': 51746, 'rev': 930604297,
'tid': '58b40b30-20e7-11ea-a7a9-f1850c7cfe85', 'namespace': 0, 'user_id':
19450869, 'user_text': 'Dhruvh', 'timestamp': '2019-12-13T16:47:52Z', 'comment': '/* 1984-1995: Origins
and initial growth */', 'tags': [], 'restrictions': [], 'page_language':
'en', 'redirect': False}]}
```

Which command needs to be placed on the box where the code is missing to output the value of page\_id in the Python 3.7 script?

A)

```
print(items['items']['page_id'])
```

B)

```
print(items.get('items').get('page_id'))
```

C)

```
print(items.get('items')[0].get('page_id'))
```

D)

```
print(items['items']['page_id'].keys())
```

- A. Option A
- B. Option B
- C. Option C
- D. Option D

**Answer: C**

#### NEW QUESTION 46

- (Exam Topic 2)

A developer creates a script that configured multiple Cisco IOS XE devices in a corporate infrastructure. The internal test environment is unavailable, and no maintenance window is available to test on a low-priority production environment. Which resource is used to test the code before it is applied to the production environment?

- A. Code Exchange
- B. Cisco DevNet Learning Labs
- C. Cisco DevNet Sandbox
- D. Cisco Support

**Answer: C**

#### Explanation:

Reference: <https://developer.cisco.com/site/sandbox/>

#### NEW QUESTION 48

- (Exam Topic 2)

Which tool is used to block all traffic to the domain by using a single API call?

- A. Cisco ISE
- B. Cisco Firepower
- C. Cisco AMP
- D. Cisco Umbrella

**Answer:** B

#### NEW QUESTION 49

- (Exam Topic 2)

How does a synchronous API request differ from an asynchronous API request?

- A. clients receive responses with a task id for further processing
- B. clients subscribe to a webhook for operation results
- C. clients are able to access the results immediately
- D. clients poll for the status of the execution of operations

**Answer:** C

#### NEW QUESTION 51

- (Exam Topic 2)

Which platform is used to programmatically create a space and invite users for collaboration?

- A. Cisco Intersight
- B. Cisco Finesse
- C. Cisco Webex
- D. Cisco UCM

**Answer:** C

#### NEW QUESTION 55

- (Exam Topic 2)

Refer to the exhibit.

Returns the wireless lan controller info with given device ID:

```
{
  "response": {
    "adminEnabledPorts": [ 0 ],
    "apGroupName": "string",
    "deviceId": "string",
    "ethMacAddress": "string",
    "flexGroupName": "string",
    "id": "string",
    "instanceTenantId": "string",
    "instanceUuid": "string",
    "lagModeEnabled": true,
    "netconfEnabled": true,
    "wirelessLicenseInfo": "ADVANTAGE",
    "wirelessPackageInstalled": true
  },
  "version": "string"
}
```

Drag and drop the code from the bottom onto the blanks in the code to construct a cURL command using the Cisco DNA Center API. which will provide the details of a WLAN controller with Id af397748444. Not at options are used.

#### Answer Area

```
curl -L --request GET \
--url https://dna/intent/api/v1/ / / \
--header 'Content-Type: application/json' \
--header 'Accept:application/json'
```

network-device

id

wireless

wireless-info

controller

details

- A. Mastered
- B. Not Mastered



**Answer:** A

**Explanation:**

Diagram Description automatically generated

**NEW QUESTION 57**

- (Exam Topic 2)

Which HTTP response status code means “Forbidden”?

- A. 500
- B. 401
- C. 403
- D. 502

**Answer:** C

**Explanation:**

Reference: <https://developer.mozilla.org/en-US/docs/Web/HTTP/Status/403>

**NEW QUESTION 58**

- (Exam Topic 2)

Refer to the exhibit.

**Local File Attachments**

To send local file attachments, simply post a message by including your access token in the Authorization header and the path to your local file with the files parameter. Optionally, you can also include a plain-text message with the attachment by using the text parameter. When uploading files directly from your local filesystem, your request will need to be a multipart/form-data request rather than JSON

```
curl --request POST \  
  --form "files=@/home/desktop/example.png;type=image/png" \  
  --form "roomId=Y21zY2....." \  
  --form "text=example attached" \  
https://webexapis.com/v1/messages
```

A developer needs to upload a local file by using the REST API. The developer gathers information according to the documentation and sends the request by using the cURL command in the exhibit but gets an error code. Which action should be followed to get valid response?

- A. change content type as JSON
- B. add the authorization header with the access token
- C. add a username-password combination to request command
- D. change request method as GET

**Answer:** B

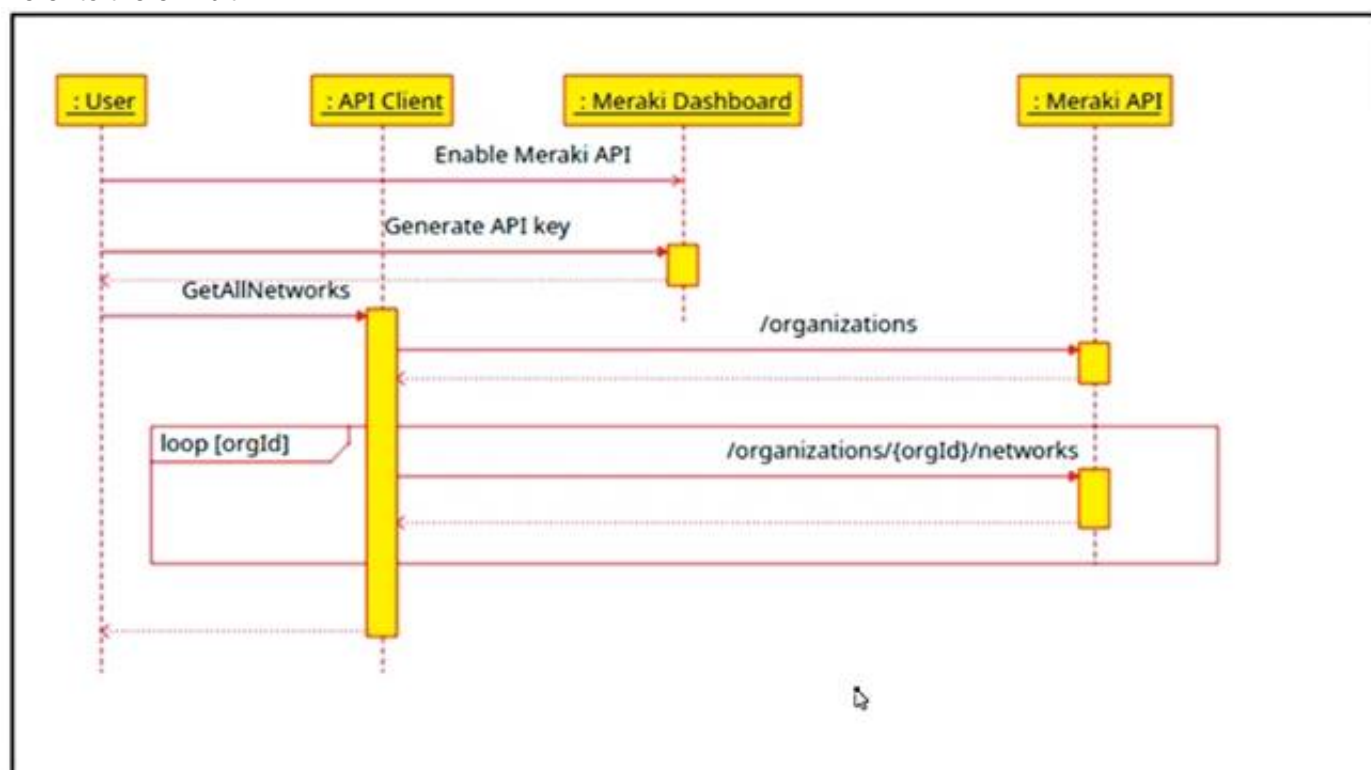
**Explanation:**

Reference: <https://developer.webex.com/docs/api/basics>

**NEW QUESTION 59**

- (Exam Topic 2)

Refer to the exhibit.



The Cisco Meraki API manages two organizations. In each organization, two independent networks are defined. How many calls to the

/organizations/(orgid)networks endpoint will be run parallel by the GetAllNetwork function of the API client?

- A. 1
- B. 2
- C. 4

**Answer: C**

#### NEW QUESTION 62

- (Exam Topic 2)

How are load balancers used in modern application deployment?

- A. Allow traffic to continue as new compute units are brought up and old compute units are taken down.
- B. Allow http and https traffic to continue as old compute units are discontinued before new units are brought up.
- C. Turn off traffic and take down compute units, then update and bring the compute units back up.
- D. Bring up new compute units, test the compute units, and switch the traffic from old units to new units.

**Answer: D**

#### NEW QUESTION 65

- (Exam Topic 2)

Refer to the exhibit.

```
>>> response_data = requests.get(base_url + request_url, cookies=cookies)
Traceback (most recent call last):
  File "<stdin>", line 1, in <module>
NameError: name 'requests' is not defined
>>>
```

A Python code has been written to query a device. The executed code results in the error shown. Which action resolves the problem?

- A. import json
- B. requests("GET", base\_url + request\_url, cookies=cookies)
- C. pip install requests
- D. import requests

**Answer: D**

#### NEW QUESTION 67

- (Exam Topic 2)

Refer to the exhibit.

```
--- README.md-repo  2019-10-06 21:15:59.000000000 +0100
+++ README.md       2019-10-06 21:07:35.000000000 +0100
@@ -88,8 +88,6 @@
    ``
-
-
-  ## Troubleshooting
-
-  ### CMake
@@ -162,4 +160,13 @@
-
-  ## References
-
-  +### Mosquitto
+
+  +* [github] (https://github.com/eclipse/mosquitto)
+  +* [homepage] (https://mosquitto.org)
+
+  +### MQTT
+
+  +* [organisation] (http://mgtt.org)
+
+  +
```

The output of the diff-u README.md-repo README.md command is shown. The original file was 165 lines long How many lines are in the edited copy of the file?

- A. 162
- B. 165
- C. 172
- D. 173

**Answer: C**



## NEW QUESTION 72

- (Exam Topic 1)

Refer to the exhibit.

### List Messages

Lists all messages in a room. Each message will include content attachments if present.

The list sorts the messages in descending order by creation date.

Long result sets will be split into [pages](#).

GET

/v1/messages

### Query Parameters

roomId

string

Required

List messages in a room, by ID.

mentionedPeople

array

List messages with these people mentioned, by ID. Use me as a shorthand for the current API user.

before

string

List messages sent before a date and time.

beforeMessage

string

List messages sent before a message, by ID.

max

number

Limit the maximum number of messages in the response.

Default: 50

Try it

Example

GET

/v1/messages{?roomId,mentionedPeople,before,beforeMessage}

### Header

Authorization

Use personal access token

Bearer

.....

This limited-duration personal access token is hidden for your security.

### Query Parameters

roomId

Required

e.g. Y2lzY29zcGFyazovL3VzL1lPT00vYmJj

mentionedPeople

e.g. Y2lzY29zcGFyazovL3VzL1BFT1BMR56

before

e.g. 2016-04-2Tf9:01:55:966Z

beforeMessage

e.g. Y2lzY29zcGFyazovL3VzL1FU1NBROL

max

e.g. 100

Run

```
bash-3.2$ curl -H "Content-Type: application/json" -H "Authorization: Fj2zzzykEa091ic9GK2j8LtE1HklH6oRHPQdw1Pat60i7ndtHHnWzL2b5pqMg14Kk_B9EI59isacLy7-NarA02n9H-tGgt-SxQ39iDejgcs" -i -X POST -d "{ \"roomId\": \"Y2geK53sjEknosrC7SwQ5ZGL99pHgiuScB7DfNvU8Xx4wDKLiPORcEkryAnM3QmK9LQZsP0G4\", \"text\": \"test2\" }" https://api.ciscospark.com/v1/messages

HTTP/1.1 401 Unauthorized
Via: 1.1 linkerd
TrackingID: ROUTER_5E0FDC8C-EB6F-01BB-00EF-806BF1BD00EF
Date: Sat, 04 Jan 2020 00:30:04 GMT
Server: Redacted
Content-Length: 267
Content-Type: application/json
Strict-Transport-Security: max-age=63072000; includeSubDomains; preload

{"message": "The request requires a valid access token set in the Authorization request header.", "errors": [{"description": "The request requires a valid access token set in the Authorization request header."}], "trackingId": "ROUTER_5E0FDC8C-EB6F-01BB-00EF-806BF1BD00EF"}

bash-3.2$
```

A developer is troubleshooting an API with the given API with the given API documentation and cURL command. What is the cause of this problem?

- A. The user is not allowed to post messages from their account
- B. The request body is missing or incomplete
- C. The API token specified is expired
- D. The authorization header is missing or incomplete

Answer: C

## NEW QUESTION 73

- (Exam Topic 1)

Which two statements describe the traits of an asynchronous API call? (Choose two.)

- A. The order in which API calls return can be guaranteed
- B. A call to an API does not block the code, but rather it allows application processing to continue
- C. The end user can experience latency or performance lag while waiting for the API call to return
- D. Code execution blocks or waits for the call to an API to return.
- E. A callback function typically is used to process the response from an API call

Your Partner of IT Exam

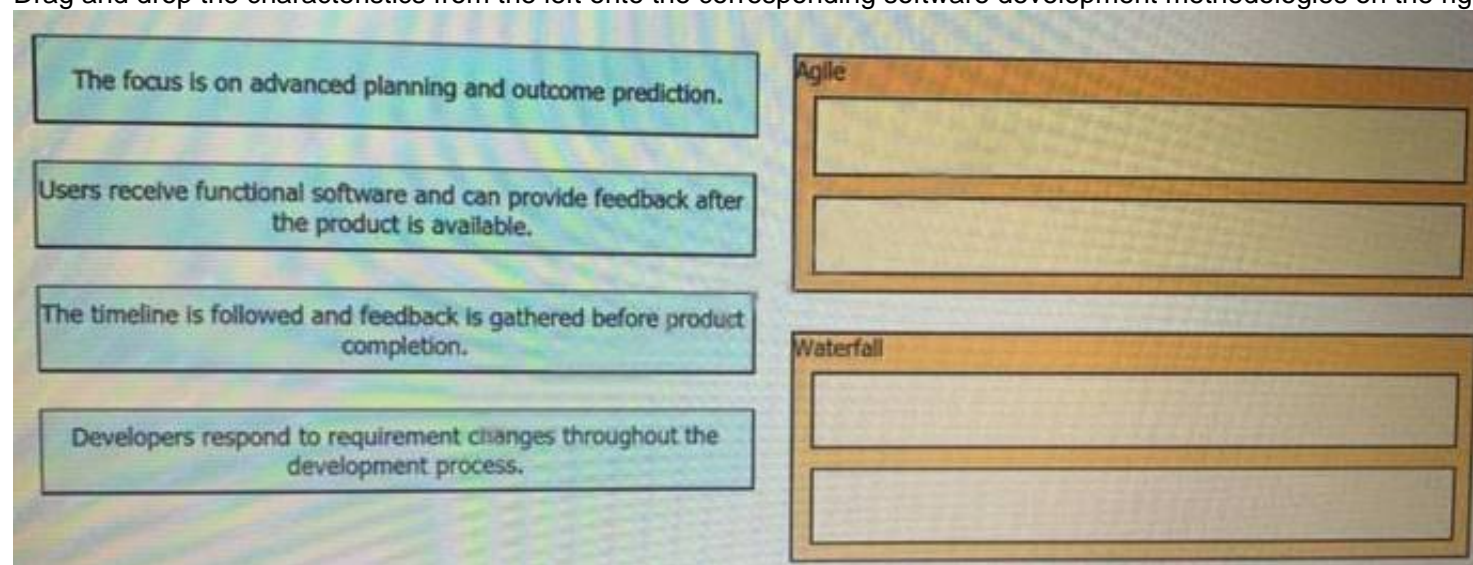
visit - <https://www.examible.com>

Answer: BE

#### NEW QUESTION 75

- (Exam Topic 1)

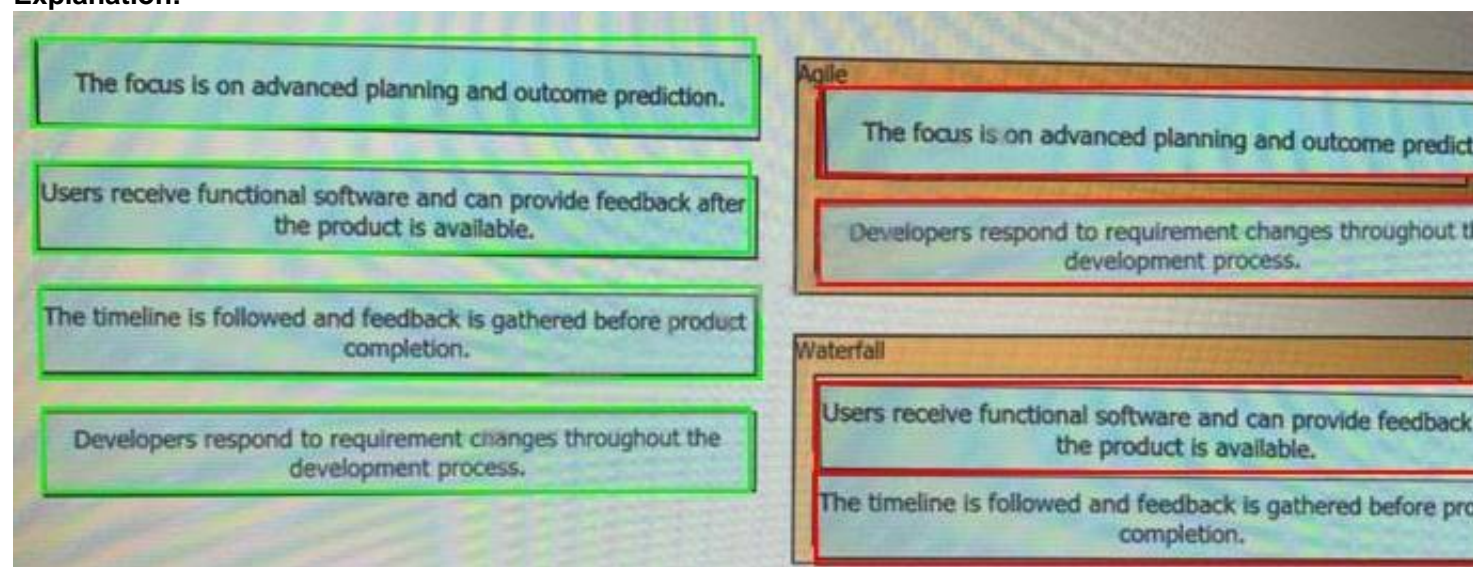
Drag and drop the characteristics from the left onto the corresponding software development methodologies on the right?



- A. Mastered
- B. Not Mastered

Answer: A

Explanation:



#### NEW QUESTION 79

- (Exam Topic 1)

Which HTTP status Code means that the server cannot or will not process the request because of perceived client error?

- A. 100
- B. 203
- C. 303
- D. 400

Answer: D

#### NEW QUESTION 83

- (Exam Topic 1)

Which API is used to obtain data voicemail ports?

- A. Finesse gadgets
- B. Cisco Unified Communications manager
- C. Webex devices
- D. Webex teams

Answer: B

Explanation:

Cisco Unified Communications Manager (CUCM) provides API access to data management, call management, and voicemail integration. Source: Cisco DevNet Fundamental Course: <https://developer.cisco.com/certification/fundamentals/>

#### NEW QUESTION 87

- (Exam Topic 1)

What is a function of the default gateway in a network?

- A. to drop traffic that is destined to the default gateway



- B. to drop traffic that is not destined to the default gateway
- C. to forward traffic to the same subnet
- D. to forward traffic to different subnets

**Answer:** D

#### NEW QUESTION 90

- (Exam Topic 1)

Drag and drop the capability on the left onto the Cisco compute management platform that supports the capability on the right.

Multi-Cloud automation and orchestration platform for Cisco and third-party servers, networks, storage, and converged infrastructure.	UCS Manager
Software as a Service Platform that enables Cisco infrastructure management, automation and orchestration from anywhere.	UCS Director
Embedded software that enables Cisco server, fabric, and storage provisioning.	Intersight

- A. Mastered
- B. Not Mastered

**Answer:** A

**Explanation:**

Multi-Cloud automation and orchestration platform for Cisco and third-party servers, networks, storage, and converged infrastructure.	Embedded software that enables Cisco server, fabric, and storage provisioning.
Software as a Service Platform that enables Cisco infrastructure management, automation and orchestration from anywhere.	Multi-Cloud automation and orchestration platform for Cisco and third-party servers, networks, storage, and converged infrastructure.
Embedded software that enables Cisco server, fabric, and storage provisioning.	Software as a Service Platform that enables Cisco infrastructure management, automation and orchestration from anywhere.

#### NEW QUESTION 92

- (Exam Topic 1)

Which device is a system that monitors and controls incoming and outgoing network traffic based on predetermined security rules?

- A. Switch
- B. Router
- C. Firewall
- D. Load balancer

**Answer:** C

#### NEW QUESTION 95

- (Exam Topic 1)

When using the Bash shell, how is the output of the devnet command saved to a file named "output.txt"?

- A. devnet & output.txt
- B. devnet > output.txt
- C. devnet < output.txt
- D. devnet | output.txt

**Answer:** B

**Explanation:**

Reference: <https://askubuntu.com/questions/420981/how-do-i-save-terminal-output-to-a-file>

#### NEW QUESTION 99

- (Exam Topic 1)

Which service provides a directory lookup for IP addresses and host names?

- A. DNS
- B. DHCP
- C. SNMP
- D. NAT

Answer: A

NEW QUESTION 104

- (Exam Topic 1)

Fill in the blanks to complete the python script to retrieve a list of network devices using the Cisco DNA center API.

```
import requests
url = "https://myDNAserver/dna/intent/api/v1/network-device"
payload = {}
headers = {'x-auth-token': 'eyJ0eXAiOiJKV1QiLCJhbGciOiJIUzI1NiJ9.eyJzdWIiOiI1ZDE0OWZkMjhlZTY2MmQ3NGM5YzE5ZTIiLCJmYzMCiSlmV4cCI6MTU3MjM3ODE5MCwidXNlcm5hbWUiOiJraXN371274739.zhK5LPQd501ZUpZI0IH_qrgOXttlNbxSFFF7JOEtRis'}
response = requests.request( , url,
headers = , data = )
print(response.text.encode('utf8'))
```

- A. Mastered
- B. Not Mastered

Answer: A

Explanation:

Solution as below.

```
import requests
url = "https://myDNAserver/dna/intent/api/v1/network-device"
payload = {}
headers = {'x-auth-token': 'eyJ0eXAiOiJKV1QiLCJhbGciOiJIUzI1NiJ9.eyJzdWIiOiI1ZDE0OWZkMjhlZTY2MmQ3NGM5YzE5ZTIiLCJmYzMCiSlmV4cCI6MTU3MjM3ODE5MCwidXNlcm5hbWUiOiJraXN371387657.zhK5LPQd501ZUpZI0IH_qrgOXttlNbxSFFF7JOEtRis'}
response = requests.request("GET", url,
headers = headers, data = payload )
print(response.text.encode('utf8'))
```

NEW QUESTION 107

- (Exam Topic 1)

Drag and drop the HTTP methods from the left onto their generally accepted corresponding create, read, update, and delete operations on the right.

DELETE	Create
GET	Read
PATCH	Update
POST	Update
PUT	Delete

- A. Mastered
- B. Not Mastered

Answer: A

Explanation:

1 – D, 2 – B, 3 – C, 4 – E, 5 – A

Reference:

<https://www.cisco.com/c/en/us/td/docs/cloud-systems-management/application-policy-infrastructure-controller-e>

OR

Answer : Post



Get Put Delete

#### NEW QUESTION 108

- (Exam Topic 1)

A Company is looking for cloud deployment which will use the on-premise infrastructure, is user self-service, and easy to scale. Which cloud solution should be selected for these requirements?

- A. multi
- B. public
- C. private
- D. hybrid

**Answer: C**

#### NEW QUESTION 112

- (Exam Topic 1)

Which CI/CD tool is an automation tool used to build, test, and deploy software?

- A. Nagios
- B. Gradle
- C. Jenkins
- D. Git

**Answer: C**

#### Explanation:

Reference:

<https://www.infoworld.com/article/3271126/what-is-cicd-continuous-integration-and-continuous-delivery-expla>

#### NEW QUESTION 113

- (Exam Topic 1)

Refer to the exhibit.

```
$ diff -u5 fish.py cat.py
--- fish.py      2020-01-02 09:41:02.840000000 +0100
+++ cat.py      2020-01-02 09:41:06.8859999800 +0100
@@ -160,11 +160,12 @@

    @single_request_timeout.setter
    def single_request_timeout(self, value):
        """The timeout (seconds) for a single HTTP REST API request."""
        check_type(value, int, optional=True)
-        assert value is None or value > 0
+        if value is not None and value <= 0:
+            raise ValueError("single_request_timeout must be positive integer")
        self._single_request_timeout = value

    @property
    def wait_on_rate_limit(self)
        """Automatic rate-limit handling.
```

The output of a unified diff when comparing two versions of a python script is shown. Which two “single\_request\_timeout ()”

A.

```
file: cat.py

160
161     @single_request_timeout.setter
162     def single_request_timeout(self, value):
163         """The timeout (seconds) for a single HTTP REST API request."""
164         check_type(value, int, optional=True)
165         assert value is None or value > 0
166         if value is not None and value <= 0:
167             raise ValueError("single_request_timeout must be positive integer")
168         self._single_request_timeout = value
169
```

B.



file: fish.py

```
160
161 @single_request_timeout.setter
162 def single_request_timeout(self, value):
163     """The timeout (seconds) for a single HTTP REST API request."""
164     check_type(value, int, optional=True)
165     assert value is None or value > 0
166     self._single_request_timeout = value
167
```

C.

file: cat.py

```
160
161 @single_request_timeout.setter
162 def single_request_timeout(self, value):
163     """The timeout (seconds) for a single HTTP REST API request."""
164     check_type(value, int, optional=True)
165     if value is not None and value <= 0:
166         raise ValueError("single_request_timeout must be positive integer")
167     self._single_request_timeout = value
168
169
```

D.

file: fish.py

```
160
161 @single_request_timeout.setter
162 def single_request_timeout(self, value):
163     """The timeout (seconds) for a single HTTP REST API request."""
164     check_type(value, int, optional=True)
165     self._single_request_timeout = value
```

E.

file: cat.py

```
172
173 @single_request_timeout.setter
174 def single_request_timeout(self, value):
175     """The timeout (seconds) for a single HTTP REST API request."""
176     check_type(value, int, optional=True)
177     if value is not None and value <= 0:
178         raise ValueError("single_request_timeout must be positive integer")
179     self._single_request_timeout = value
180
```

F. Option A

G. Option B

H. Option C

I. Option D

J. Option E

**Answer: BC**

#### NEW QUESTION 114

- (Exam Topic 1)

What are two security benefits of a Docker-based application?

- A. easier to patch because Docker containers include only dependencies that the application requires
- B. prevents information leakage that can occur when unhandled exceptions are returned in HTTP responses
- C. allows for separation of application that traditionally run in the same host
- D. natively secures access to secrets that are used by the running application
- E. guarantees container images are secured and free of vulnerabilities

**Answer: AC**

#### NEW QUESTION 118

- (Exam Topic 1)

Refer to Exhibit.

```
<books>
  <science>
    <biology>10.00</biology>
    <geology>9.00</geology>
    <chemistry>8.00</chemistry>
  </science>
  <math>
    <calculus>20.00</calculus>
    <algebra>12.00</algebra>
  </math>
</books>
```

Which JSON is equivalent to the XML-encoded data.

A)

```
{
  "books": {
    "science": {
      "biology": "10.00",
      "geology": "9.00",
      "chemistry": "8.00"
    },
    "math": {
      "calculus": "20.00",
      "algebra": "12.00"
    }
  }
}
```

B)

```
[ {
  "books": {
    "science": {
      "biology": "10.00",
      "geology": "9.00",
      "chemistry": "8.00"
    },
    "math": {
      "calculus": "20.00",
      "algebra": "12.00"
    }
  }
} ]
```

C)

```
{
  "books": [
    "science", {
      "biology": "10.00",
      "geology": "9.00",
      "chemistry": "8.00"
    },
    "math", {
      "calculus": "20.00",
      "algebra": "12.00"
    }
  ]
}
```

D)

```
{
  "books": [
    "science": {
      "biology": "10.00",
      "geology": "9.00",
      "chemistry": "8.00"
    },
    "math": {
      "calculus": "20.00",
      "algebra": "12.00"
    }
  ]
}
```

- A. Option A
- B. Option B
- C. Option C
- D. Option D

**Answer:** A

#### NEW QUESTION 122

- (Exam Topic 1)

How does requesting a synchronous API operation differ from requesting an asynchronous API operation?

- A. clients poll for the status of the execution of operations
- B. clients subscribe to a webhook for operation results
- C. clients can access the results immediately
- D. clients receive responses with a task id for further processing

**Answer:** C

#### NEW QUESTION 124

- (Exam Topic 1)

Which two concepts describe test-driven development? (Choose two.)

- A. It enables code refactoring.
- B. Write a test before writing code.
- C. Implementation is driven by incremental testing of release candidates.
- D. User acceptance testers development the test requirements.
- E. Tests are created when code is ready for release.

**Answer:** BC

#### Explanation:

[https://www.tutorialspoint.com/software\\_testing\\_dictionary/release\\_candidate.htm](https://www.tutorialspoint.com/software_testing_dictionary/release_candidate.htm)

#### NEW QUESTION 128

- (Exam Topic 1)

Which two items are Cisco DevNet resources? (Choose two.)

- A. TAC support
- B. Bitbucket
- C. Sandbox
- D. Software research
- E. API Documentation

**Answer:** CE

#### Explanation:

Reference: <https://developer.cisco.com/>

#### NEW QUESTION 129

- (Exam Topic 1)

The project is migrated to a new codebase, the “old\_project” directory must be deleted. The directory has multiple read-only files, and it must be deleted recursively without prompting for confirmation. Which bash command must be used?

- A. rm -rf old\_project
- B. rm -r old\_project
- C. rmdir -p old\_project
- D. rmdir old\_project



Answer: A

#### NEW QUESTION 130

- (Exam Topic 1)

Refer to the exhibit.

#### HTTP REQUEST

**POST** /organizations/ {organizationId}/networks

#### PARAMETERS

##### name

The name of the new network.

##### type

The type of the new network. Valid types are wireless, appliance, switch, systemsManager, camera, cellularGateway, or a space-separated list of those for a combined network.

##### tags

A space-separated list of tags to be applied to the network.

##### timeZone

The timezone of the network. For a list of allowed timezones, please see the 'TZ' column in the table in [this article](#).

##### copyFromNetworkId

The ID of the network to copy configuration from. Other provided parameters will override the copied configuration, except type which must match this network's type exactly.

##### disableMyMerakiCom

Disables the local device status pages ([my.meraki.com](#), [ap.meraki.com](#), [switch.meraki.com](#), [wired.meraki.com](#)). Optional (defaults to false).

##### disableRemoteStatusPage

Disables access to the device status page ([http://\[device's LAN IP\]](#)). Optional. Can only be set if disableMyMerakiCom is set to false.

```
base_url = https://api.meraki.com/api/v0
org_id = 123456789
api_key = 1098hadpfsiapsf8ahf8ohp
network_name = "New Network"
requests.<item 1> (
    <item 2> + "/" + org_id + "/" + <item 4>,
    headers = {
        "X-Cisco-Meraki-API-Key": "<item 5>",
        "Content-Type": "<item 6>"
    },
    <item 7>=json.dumps ({ "name": <item 8>,
                          "type": "wireless switch"
                          })
)
```

Drag and drop the code from the left onto the item numbers on the right to complete the Meraki python script shown in the exhibit.

base_url	<item 1>
network_name	<item 2>
data	<item 3>
post	<item 4>
application/json	<item 5>
networks	<item 6>
api_key	<item 7>
organizations	<item 8>

- A. Mastered  
B. Not Mastered

**Answer:** A

**Explanation:**

1 – D, 2 – A, 3 – H, 4 – F, 5 – G, 6 – E, 7 – C, 8 – B

**NEW QUESTION 131**

- (Exam Topic 1)

A function my\_func() returns True when it executes normally. Which python snippet tests my\_func()?

- ☒

```
def test_func(self):  
    self.assertTrue(my_func())
```
- ☐

```
def test_func(self):  
    self.assertRaises(my_func())
```
- ☐

```
def test_func(self):  
    self.assertEqual(my_func(), '{true}')
```
- ☐

```
def test_func(self):  
    self.assertFalse(my_func())
```

- A. Option A  
B. Option B  
C. Option C  
D. Option D

**Answer:** B

**NEW QUESTION 135**

- (Exam Topic 1)

In python, which expression checks whether the script returns a success status code when the Requests library is used?

- A. response.status\_code== requests.ok  
B. response.status\_code== requests.codes.ok  
C. response.code== requests.codes.ok  
D. response.status\_code != requests.codes.ok



Answer: B

Explanation:

Reference: <https://realpython.com/python-requests/>

NEW QUESTION 138

- (Exam Topic 1)

Drag and drop the requests from the left into the correct order on the right to create and check the path trace between two devices using Cisco DNA center API.

GET /api/v1/flow-analysis/{flowAnalysisId}	Step 1
POST /api/v1/flow-analysis	Step 2
POST /api/system/v1/auth/token	Step 3
GET /api/v1/network-device/ and choose IP of source and destination devices	Step 4

- A. Mastered
- B. Not Mastered

Answer: A

Explanation:

1 – C, 2 – D, 3 – B, 4 - A

NEW QUESTION 143

- (Exam Topic 1)

Which task is performed because the test-driven development approach is being used?

- A. testing existing software before developing new code
- B. refactoring code that is covered by existing tests
- C. writing code without committing any coding violations
- D. creating test scenarios based on continuous development

Answer: B

Explanation:

"The idea is that you build a test case first, before any software has been created or modified" but "testing existing software before developing new code" is the idea or goal, not the task five steps of TDD:

- Write a test
- Test fails
- Write some code
- Test passes
- Refactor

NEW QUESTION 148

- (Exam Topic 1)

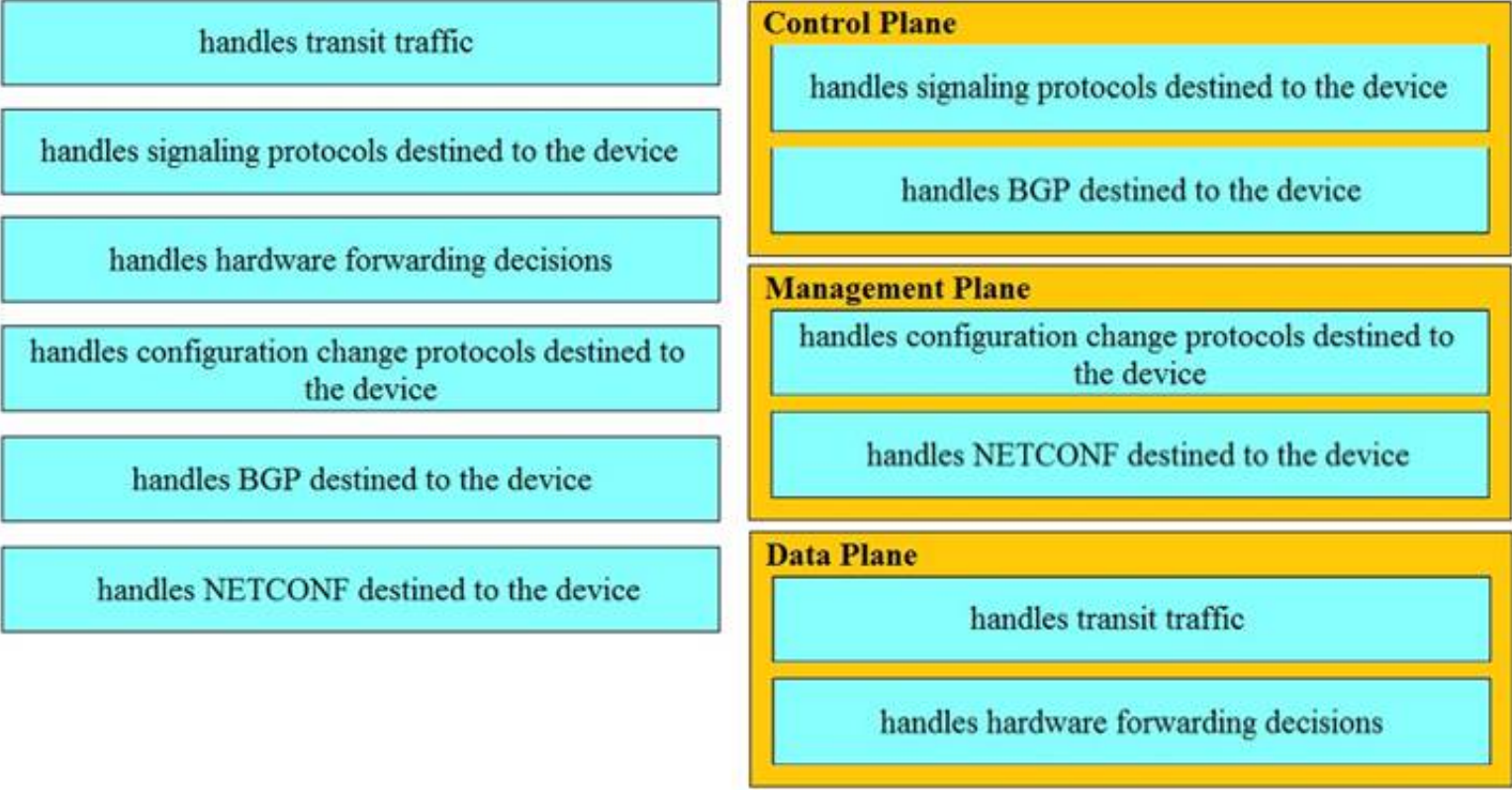
Drag and drop the function on the left onto the type of plane that handles the function on the right.

handles transit traffic	<b>Control Plane</b> <div></div> <div></div>
handles signaling protocols destined to the device	
handles hardware forwarding decisions	<b>Management Plane</b> <div></div> <div></div>
handles configuration change protocols destined to the device	
handles BGP destined to the device	
handles NETCONF destined to the device	<b>Data Plane</b> <div></div> <div></div>

- A. Mastered
- B. Not Mastered

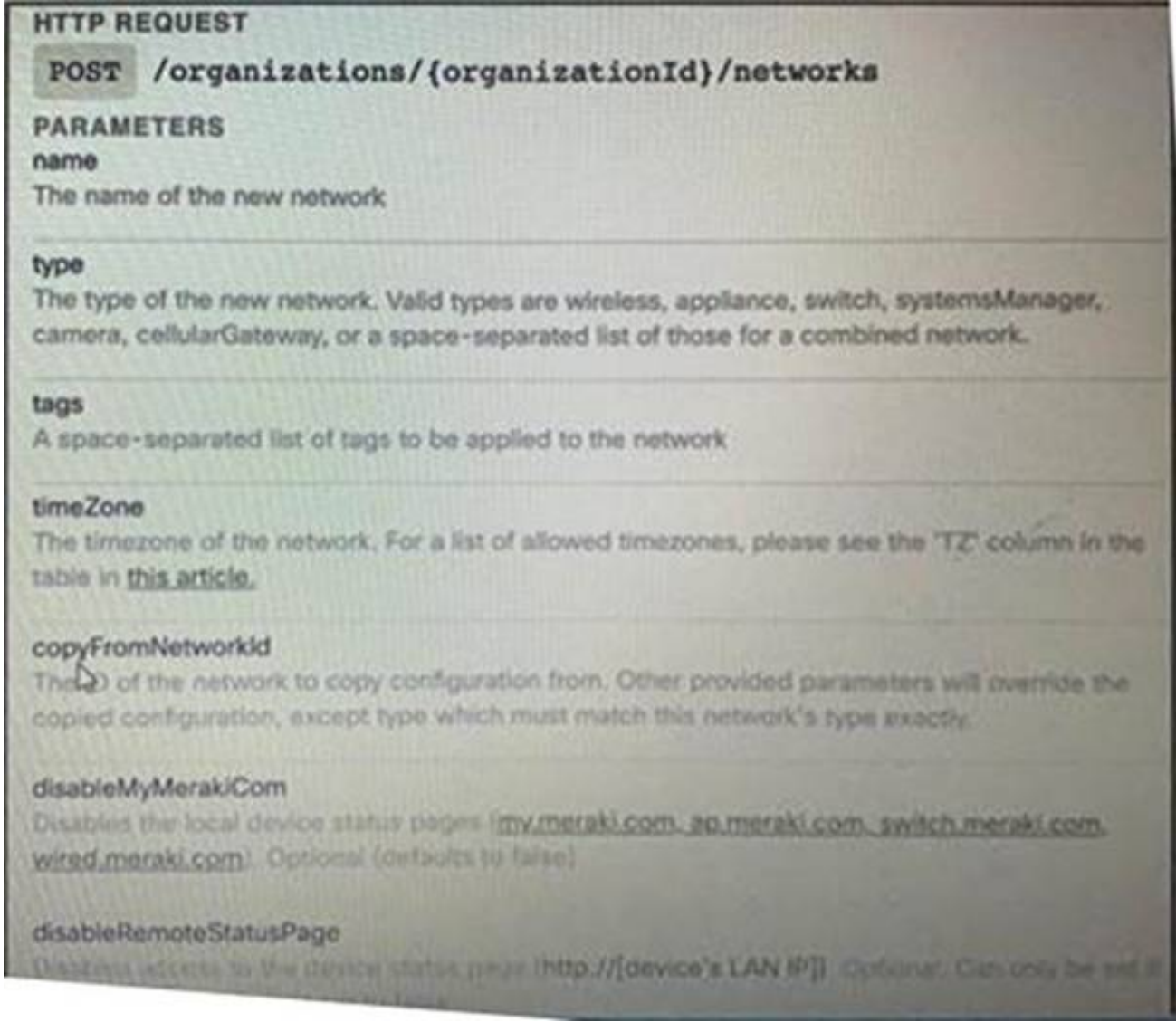
Answer: A

Explanation:

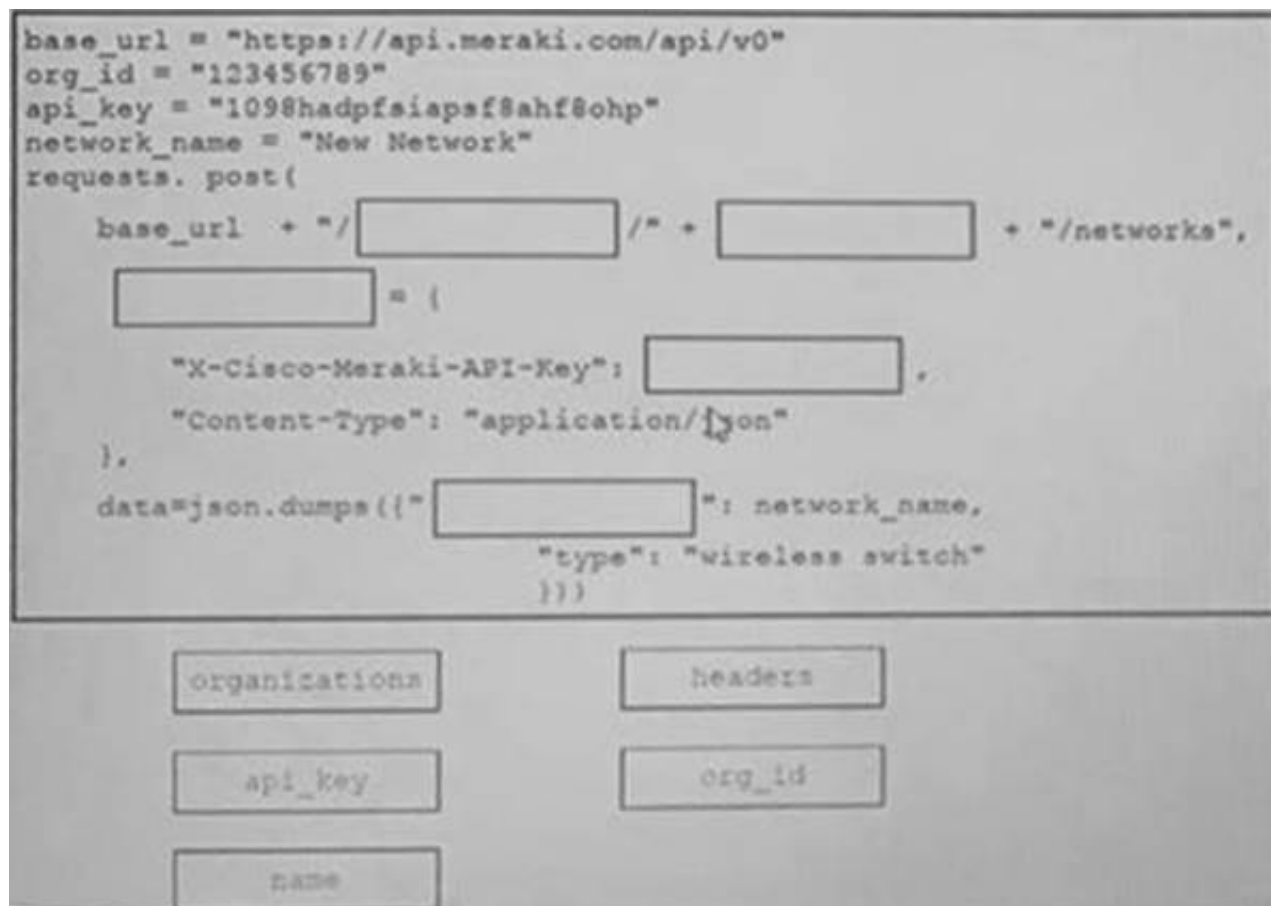


NEW QUESTION 153

- (Exam Topic 1)  
Refer to the exhibit.



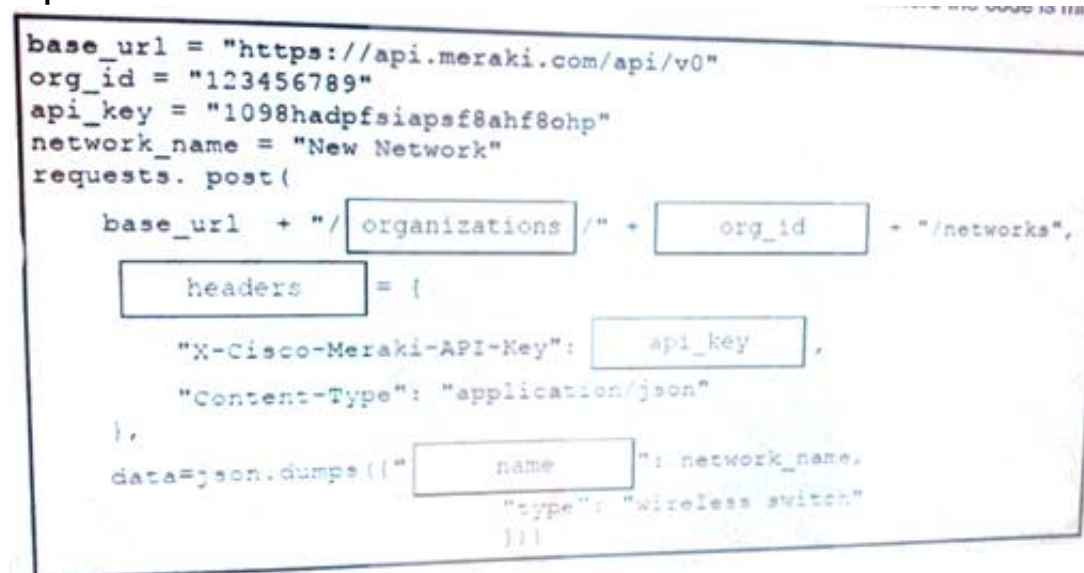
Drag and Drop the code from the bottom onto the box where the code is missing on the Meraki Python script to create a new network



- A. Mastered
- B. Not Mastered

Answer: A

Explanation:



#### NEW QUESTION 158

- (Exam Topic 1)

Which two statements describe the advantages of using a version control system? (Choose two.)

- A. It allows for branching and merging so that different tasks are worked on in isolation before they are merged into a feature or master branch.
- B. It allows multiple engineers to work against the same code and configuration files and manage differences and conflicts.
- C. It provides tooling to automate application builds and infrastructure provisioning.
- D. It allows developers to write effective unit tests.
- E. It provides a system to track User Stories and allocate to backlogs.

Answer: AB

#### NEW QUESTION 162

- (Exam Topic 1)

Drag and drop the Python code from the left onto the correct step on the right to call a REST API.



<pre>response = requests.post(url, data=json.dumps(payload), \ headers=header, verify=False)</pre>	Step 1 – Import the correct libraries.
<pre>ticket = r_json["Token"] print (ticket)</pre>	Step 2 – Declare the necessary variable.
<pre>(_json = response.json() print(r_json)</pre>	Step 3 – Send the HTTP Request.
<pre>import requests import json</pre>	Step 4 – Format and display the response in JSON readable format.
<pre>controller = 'devnetapi.cisco.com/sandbox/dnacenter' url = 'https://' + controller + '/dna/system/api/v1/auth/token' payload = { 'username': 'devnetuser', 'password': 'pa55word' } header = { 'Content-type': 'application/json' }</pre>	Step 5 – Parse the response to display the Service Ticket.

- A. Mastered  
B. Not Mastered

**Answer:** A

**Explanation:**

<pre>response = requests.post(url, data=json.dumps(payload), \ headers=header, verify=False)</pre>	<pre>import requests import json</pre>
<pre>ticket = r_json["Token"] print (ticket)</pre>	<pre>controller = 'devnetapi.cisco.com/sandbox/dnacenter' url = 'https://' + controller + '/dna/system/api/v1/auth/token' payload = { 'username': 'devnetuser', 'password': 'pa55word' } header = { 'Content-type': 'application/json' }</pre>
<pre>(_json = response.json() print(r_json)</pre>	<pre>response = requests.post(url, data=json.dumps(payload), \ headers=header, verify=False)</pre>
<pre>import requests import json</pre>	<pre>(_json = response.json() print(r_json)</pre>
<pre>controller = 'devnetapi.cisco.com/sandbox/dnacenter' url = 'https://' + controller + '/dna/system/api/v1/auth/token' payload = { 'username': 'devnetuser', 'password': 'pa55word' } header = { 'Content-type': 'application/json' }</pre>	<pre>ticket = r_json["Token"] print (ticket)</pre>

#### NEW QUESTION 166

- (Exam Topic 1)

Which product provides network controller-level management features?

- A. Cisco DNA Center  
B. Cisco NX-OS  
C. Cisco UCS Manager  
D. Cisco ISE

**Answer:** A

**Explanation:**

Reference: <https://www.cisco.com/c/en/us/products/cloud-systems-management/index.html>

#### NEW QUESTION 168

- (Exam Topic 1)

What is the Git command to delete a local branch named “experiment” without a warning?

- A. git branch –n experiment  
B. git branch –rm experiment

- C. git branch –f experiment
- D. git branch –D experiment

Answer: D

Explanation:

Reference: <https://www.atlassian.com/git/tutorials/using-branches>

NEW QUESTION 171

- (Exam Topic 1)

Drag and drop the Docker file instructions from the onto correct descriptions on the right. Not all options are used.

FROM ubuntu:12.04	informs Docker that the container listens on the specified network port(s) at runtime
VOLUME["/var/www","/var/log/apache2","/etc/apache2"]	creates a mount point with the specified name
RUN apt-get update && apt-get install –y –force-yes apache2	configures a container that runs as an executable
ENTRYPOINT["/usr/sbin/apache2ctl","-D","FOREGROUND"]	must be the first instruction in the Docker file
EXPOSE 1521	

- A. Mastered
- B. Not Mastered

Answer: A

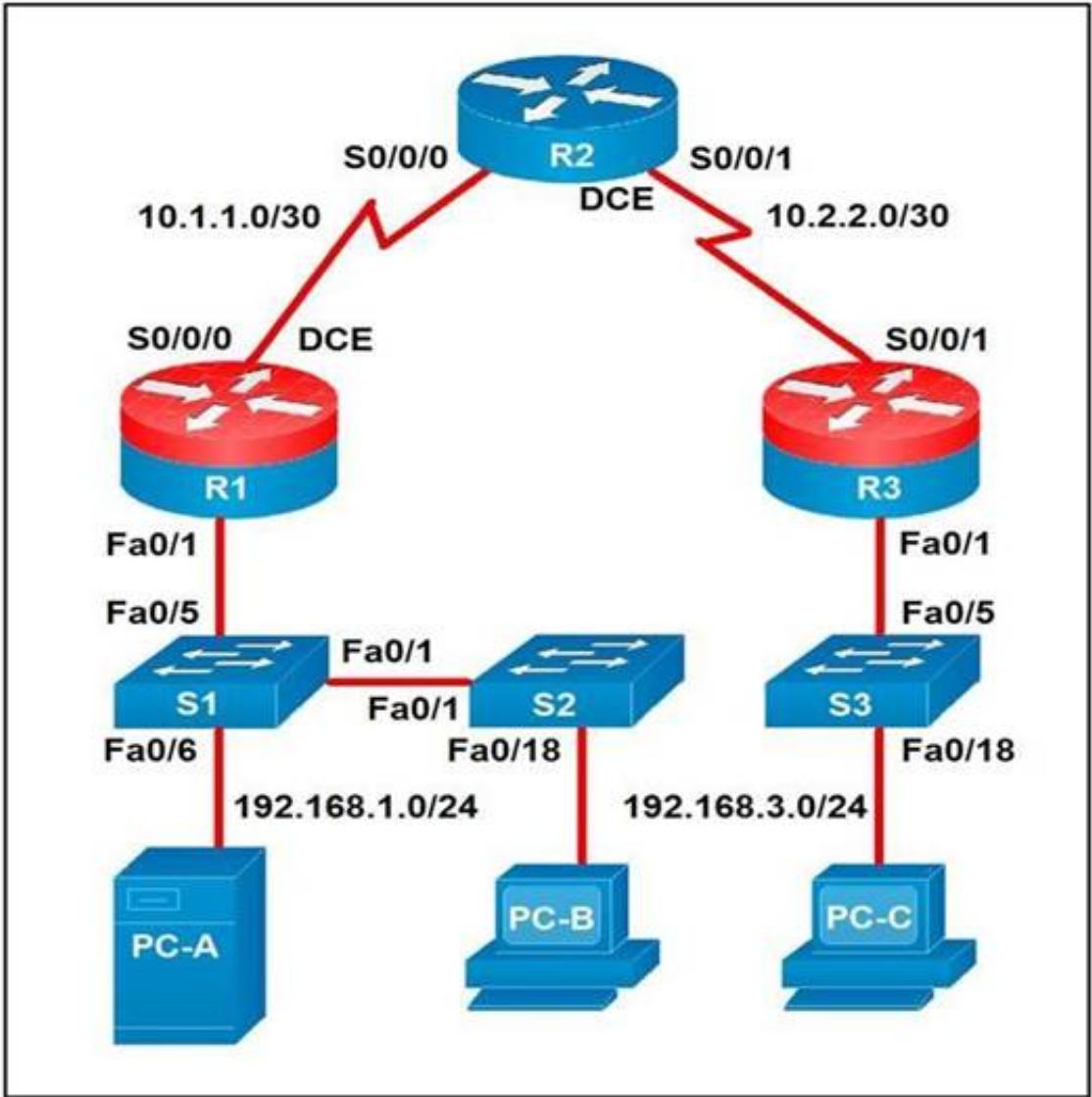
Explanation:

1 – E, 2 – B, 3 – D, 4 – A

NEW QUESTION 174

- (Exam Topic 1)

Refer to the exhibit.



Which two statements about the network diagram are true? (Choose two.)

- A. PC-A and PC-B are in the same subnet.
- B. One of the routers has two connected serial interfaces.
- C. The subnet of PC-C can contain 256 hosts.
- D. R1 and R3 are in the same subnet.
- E. The subnet address of PC-B has 18 bits dedicated to the network portion.

Answer: BC



#### NEW QUESTION 175

- (Exam Topic 1)

Fill in the blanks to complete the python script to request a service ticket using the APIC-EM rest API for the user "devnetuser".

```
import requests
import json
controller = 'devnetapi.cisco.com/sandbox/apic_em'
url = "https://" + controller + "/api/va/ticket"
payload = { 'username': ' ', 'password': '371274738' }
header = { 'Content-type': 'application/json' }
response =  post(url, data=json.dumps(payload), \
headers= , verify=False)
r_json = response.json()
print(r_json)
ticket = r_json["response"]["serviceTicket"]
print(ticket)
```

- A. Mastered
- B. Not Mastered

**Answer:** A

**Explanation:**

```
import requests
import json
controller = 'devnetapi.cisco.com/sandbox/apic_em'
url = "https://" + controller + "/api/va/ticket"
payload = { 'username': 'devnetuser', 'password': '371387657' }
header = { 'Content-type': 'application/json' }
response = requests.post(url, data=json.dumps(payload), \
headers= header, verify=False)
r_json = response.json()
print(r_json)
ticket = r_json["response"]["serviceTicket"]
print(ticket)
```

Reference: <https://developer.cisco.com/docs/apic-em/#!hello-world>

#### NEW QUESTION 179

- (Exam Topic 1)

Which platform is run directly using a hypervisor?

- A. Virtual
- B. Bare metal systems
- C. Containers
- D. Applications

**Answer:** C

#### NEW QUESTION 182

- (Exam Topic 1)

Which mechanism is used to consume a RESTful API design when large amounts of data are returned?

- A. Data sets
- B. Scrolling
- C. Blobs
- D. Pagination

**Answer:** D

**Explanation:**

Reference: <https://nordicapis.com/everything-you-need-to-know-about-api-pagination/>

#### NEW QUESTION 185

- (Exam Topic 1)

A developer is reviewing a code that was written by a colleague. It runs fine, but there are many lines of code to do a seemingly simple task repeatedly. Which action organizes the code?

- A. Refactor the code by removing any unnecessary tests
- B. Using functions, rewrite any pieces of code that are repeated
- C. Reverse engineer and rewrite the code logic
- D. Modify the code to use loops

**Answer:** B

**NEW QUESTION 189**

- (Exam Topic 1)

What is the benefit of edge computing?

- A. It reduces network latency by moving processing closer to the data source.
- B. It simplifies security as devices and processing are brought closer together
- C. It removes the need for centralized data processing.
- D. It reduces data velocity from devices or other data sources.

**Answer:** A

**Explanation:**

Reference: <https://blogs.cisco.com/networking/time-to-get-serious-about-edge-computing>

**NEW QUESTION 194**

- (Exam Topic 1)

Which two NETCONF operations cover the RESTCONF GET operation? (Choose two.)

- A. <get>
- B. <edit>
- C. <get-update>
- D. <modify-config>
- E. <get-config>

**Answer:** AE

**Explanation:**

Reference:

<https://www.cisco.com/c/en/us/support/docs/storage-networking/management/200933-YANG-NETCONF-Conf>

**NEW QUESTION 199**

- (Exam Topic 1)

What is the purpose of the Cisco VIRL software tool?

- A. To verify configurations against compliance standards
- B. To simulate and model networks
- C. To automate API workflows
- D. To test performance of an application

**Answer:** B

**Explanation:**

Reference: <https://www.speaknetworks.com/cisco-virl-better-gns3/>

**NEW QUESTION 204**

- (Exam Topic 1)

Drag and drop the network component names from the left onto the correct descriptions on the right. Not all options are used.

DNS server	contains a database of public IP addresses and their associated hostnames and often resolves or translates those names to IP addresses, as requested
firewall	enforces a set of rules about which data packets are allowed to enter or leave a network
reverse proxy	distributes network and application traffic across different servers
load balancer	retrieves resources on behalf of a client from one or more servers, then returns resources to the client, thus appearing as if they originated from the service itself
NAT gateway	

- A. Mastered
- B. Not Mastered

**Answer:** A

**Explanation:**

1 – A, 2 – B, 3 – D, 4 – C

**NEW QUESTION 206**

- (Exam Topic 1)

Which two descriptions can be given to an application that is interacting with a webhook? (Choose two.)

- A. Processor
- B. Codec
- C. Listener
- D. Receiver
- E. Transaction monitor

**Answer:** CD

#### NEW QUESTION 210

- (Exam Topic 1)

What are two roles of an artifact repository in a CI/CD pipeline? (Choose two.)

- A. is required for CI/CD pipelines executed on a public cloud infrastructure
- B. is required for managing open source software
- C. stores files needed and generated during the build process
- D. allows for comparing and merging changes in the source code
- E. provides traceability, search, and management of binary files

**Answer:** CE

#### NEW QUESTION 215

- (Exam Topic 1)

Refer to the exhibit.

```
$ pyang -f tree Cisco-IOS-XE-native.yang
module: Cisco-IOS-XE-native
  +--rw native
    +--rw logging
      +--rw monitor|
        +--rw severity?  logging-level-type

$ curl --insecure -v -X PATCH \
  "https://ios-xe-mgmt-latest.cisco.com:9443/restconf/data/Cisco-IOS-XE-native:native" \
  -H 'Authorization: Basic ZGV2ZWxvcGVyOkMxc2NvMTIzNDU=' -H 'Accept: application/yang-data+json' \
  -H 'Content-Type: application/yang-data+json' \
  -d '{ "Cisco-IOS-XE-native:native" : { "logging" : { "monitor" : { "severity" : "alerts" }} } }'
> ...
< ...
< HTTP/1.1 204 No Content
```

The definition of the YANG module and a RESTCONF query sent to a Cisco Ioc XE device is shown. Which statement is correct if the RESTCONF interface responds with a 204 status code?

- A. The query failed at retrieving the logging seventy level.
- B. The query failed to set the logging seventy level due to an invalid path.
- C. The query retrieved the logging seventy level.
- D. The query updated the logging seventy level or created it if not present on the device.

**Answer:** D

#### Explanation:

Reference:

[https://www.cisco.com/c/en/us/td/docs/ios-xml/ios/prog/configuration/1611/b\\_1611\\_programmability\\_cg/restco](https://www.cisco.com/c/en/us/td/docs/ios-xml/ios/prog/configuration/1611/b_1611_programmability_cg/restco)

#### NEW QUESTION 218

- (Exam Topic 3)

Drag and drop the code from the bottom onto the box where the code is missing to authenticate with the Cisco DNA Center REST API by using basic authentication. Then generate a token for later use. Not all options are used.



```
import requests
from requests.auth import HTTPBasicAuth

BASE_URL = 'https://sandboxdnac2.cisco.com'
AUTH_URL = '/dna/system/api/v1/' + ' '
USERNAME = 'admin'
PASSWORD = 'qwer1234!'

response = requests. (BASE_URL + AUTH_URL,
    auth=HTTPBasicAuth( , ))
token = response.json()['Token']
print(token)
```

auth/basic

/auth/token

post

get

USERNAME

Token

PASSWORD

- A. Mastered  
 B. Not Mastered

**Answer: A**

**Explanation:**

```
import requests
from requests.auth import HTTPBasicAuth

BASE_URL = 'https://sandboxdnac2.cisco.com'
AUTH_URL = '/dna/system/api/v1/' + '/auth/token'
USERNAME = 'admin'
PASSWORD = 'qwer1234!'

response = requests. post (BASE_URL + AUTH_URL,
    auth=HTTPBasicAuth( USERNAME , PASSWORD ))
token = response.json()['Token']
print(token)
```

auth/basic

/auth/token

post

get

USERNAME

Token

PASSWORD

#### NEW QUESTION 220

- (Exam Topic 3)

What is a characteristic of RPC APIs compared to REST APIs?

- A. Authentication is done over provisions for the service caller and vice versa for RPC API, and REST API uses HTTP headers for authentication.  
 B. All communications between the client and server must be stateless for RPC API, and REST API is stateful.  
 C. The architecture model for RPC API is resource-focused, and REST API is procedure-focused.  
 D. The data payload must be in JSON format for RPC API, and REST API allows JSON and XML formats.

**Answer: A**

#### NEW QUESTION 224

- (Exam Topic 3)

A file in a local Git repository has been updated and issued the git add . command. The git diff command has been run to compare the changes to the previous commit, but nothing shows. Which action identifies the problem?

- A. Run the git add . command again in the correct subdirectory to ensure changes added to the staging area.

- B. Run the git commit command before the differences are compared to receive the end state of the code.
- C. Run the git status command to see the differences between current and previous code review stages.
- D. Run the git diff --staged command to compare the code added to the staging area.

**Answer: D**

#### NEW QUESTION 225

- (Exam Topic 3)

What is a capability of the AXL API?

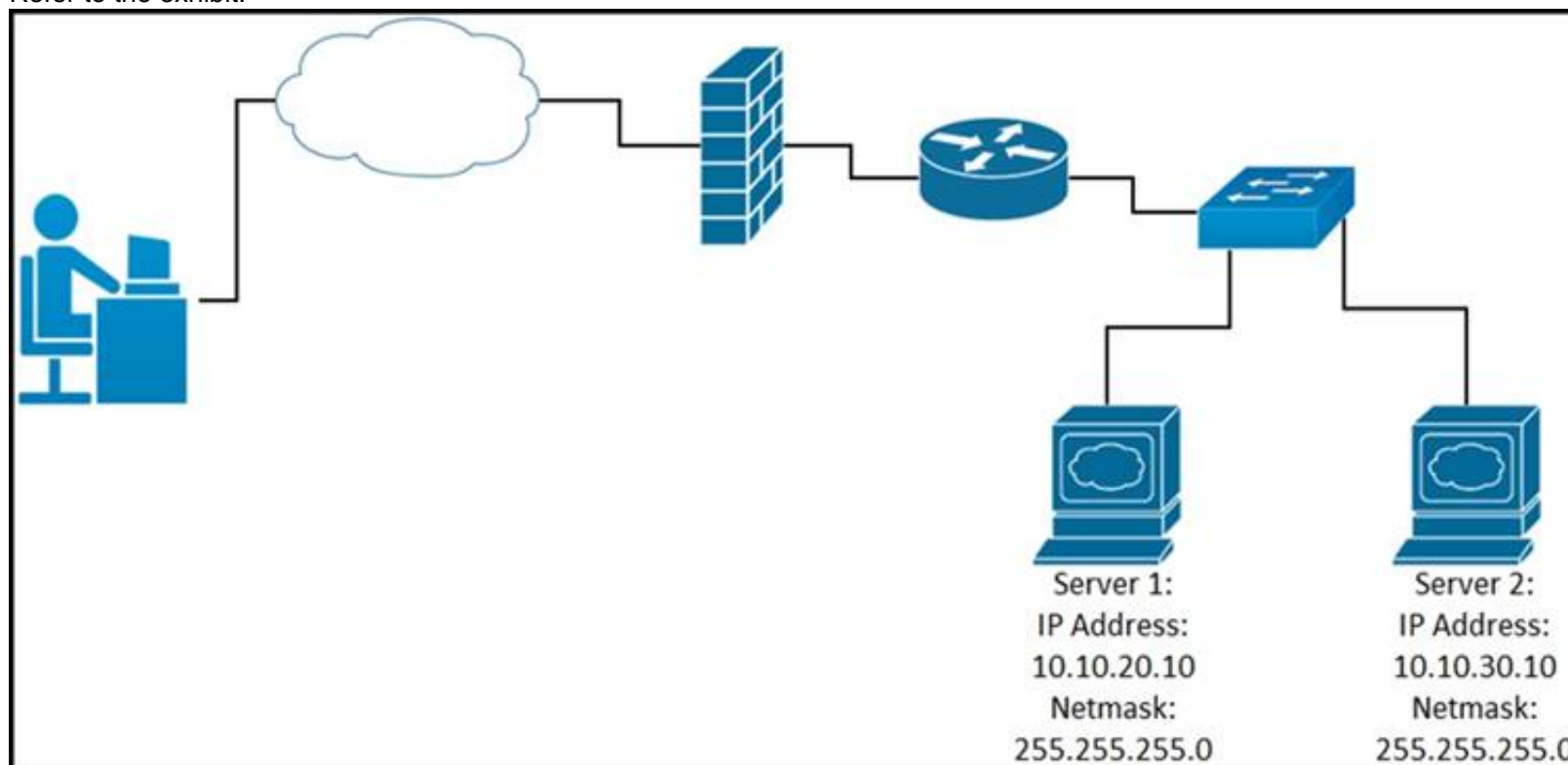
- A. It signs a user in to a phone that is configured for extension mobility.
- B. It pulls logs for the Cisco Tomcat service.
- C. It authenticates users who exist in Cisco Unified Communications Manager.
- D. It provides support for HTTP and HTTPS communications.

**Answer: C**

#### NEW QUESTION 230

- (Exam Topic 3)

Refer to the exhibit.



While developing a Cisco Webex bot, an application reaches the public IP address of the firewall, but traffic is forwarded to the IP address of server 1 instead of the IP address of server 2. What causes this issue?

- A. The proxy server that rewrites traffic is misconfigured.
- B. The router is sending the traffic to server 1 instead of server 2.
- C. The switch is forwarding IP traffic to the wrong VLAN.
- D. NAT is misconfigured on the firewall.

**Answer: D**

#### NEW QUESTION 233

- (Exam Topic 3)

A developer is running an application that connects to the Cisco website and collects data. The application will be hosted in a local data center and the data will need to be collected on a frequent basis. The application client requires certain environmental variables to be set before the run. Which Bash command sets the environmental variables for a Linux system?

- A. `"cisco.com"=WEBSITE`
- B. `export lvar=23`
- C. `WEBSITE="cisco.com"`
- D. `export website="cisco.com"`

**Answer: D**

#### NEW QUESTION 237

- (Exam Topic 3)

Refer to the exhibit.

```
1 import requests
2
3 url = "https://api.meraki.com/api/v0/organizations/{{organizationId}}/insight/
* monitoredMediaServers"
4
5 payload = {
6     "name": "Sample VoIP Provider",
7     "address": "123.123.123.1"
8 }
9 headers = {
10     'Accept': '*/*',
11     'Content-Type': 'application/json'
12 }
13
14 response = requests.request("POST", url, headers=headers, data=payload)
15
16 print(response.text.encode('utf8'))
```

Which workflow does the script automate?

- A. retrieves a media server that is being monitored
- B. updates a media server that is being monitored
- C. adds a media server to be monitored
- D. deletes a media server that is being monitored

**Answer: C**

#### NEW QUESTION 239

- (Exam Topic 3)

Drag and drop the code from the bottom onto the box where the code is missing to enable ports on a switch by using RESTCONF. Not all options are used.

```
def enable_function(if_name, if_status, if_type):
    headers = {'Accept': 'application/yang-data+json',
               'Content-Type': 'application/'}

    payload = {
        "": {
            "name": if_name,
            "enabled": if_status,
            "type": if_type,
        }
    }

    = 'https://192.168.1.1:8443'
    restconf_url = '/restconf/data/ietf-interfaces:interfaces/interface'

    res = requests.put(f'{base_url}{restconf}={if_name}',
                       headers=headers, json=payload,
                       auth=('cisco', 'secret'), verify=False)

enable_function('Loopback1', true, '')
```

yang-data+json

application/xml

ietf-interfaces:interface

iana-if-type:softwareLoopback

base\_url

run\_function

iana-if-type:ethernetCsmacd

- A. Mastered
- B. Not Mastered

**Answer: A**

**Explanation:**



```
def enable_function(if_name, if_status, if_type):
    headers = {'Accept': 'application/yang-data+json',
               'Content-Type': 'application/ yang-data+json '}
    payload = {
        " ietf-interfaces:interface ": {
            "name": if_name,
            "enabled": if_status,
            "type": if_type,
        }
    }
    base_url = 'https://192.168.1.1:8443'
    restconf_url = '/restconf/data/ietf-interfaces:interfaces/interface'
    res = requests.put(f'{base_url}{restconf_url}={if_name}',
                       headers=headers, json=payload,
                       auth=('cisco', 'secret'), verify=False)

enable_function('Loopback1', true, ' iana-if-type:ethernetCsmacd ')
```

yang-data+json

application/xml

ietf-interfaces:interface

iana-if-type:softwareLoopback

base\_url

run\_function

iana-if-type:ethernetCsmacd

#### NEW QUESTION 240

- (Exam Topic 3)

A company deploys an application via containers in its local data center. As soon as the application goes into production, it starts to crash at specific hours of the day. After investigation, it is concluded that the crashes are due to too many users accessing the application simultaneously. The spikes must be addressed and allow for future growth without discarding the investment already made. Which deployment model must be used?

- A. hybrid cloud
- B. edge
- C. private cloud
- D. public cloud

**Answer: A**

#### NEW QUESTION 243

- (Exam Topic 3)

```
$ find /home/user/backup -mtime +30 -type f -print
$ find /home/user/backup -mtime +30 -type f -delete
```

Refer to the exhibit. An engineer is managing the network of an enterprise. The network is using a distributed deployment model. The enterprise uses database to store logs. The current policy requires logs to be stored if changes are made to the infrastructure in any of the devices on the data centers. Which workflow is being automated by the Bash script?

- A. returning backup files that are older than 30 days
- B. deleting backup files that are older than 30 days
- C. configuring the directory to delete files automatically
- D. automating deletion of all backup files every 30 days

**Answer: B**

#### NEW QUESTION 245

- (Exam Topic 3)

During which step of the CI/CD pipeline for infrastructure automation is code from multiple developers combined to compile and test different components?

- A. integration
- B. deployment
- C. development
- D. testing

**Answer: A**

#### NEW QUESTION 246

- (Exam Topic 3)

Which network constraint causes the performance of the application to decrease as the number of users accessing the application increases?

- A. latency
- B. loss

- C. bandwidth
- D. jitter

**Answer:** C

#### NEW QUESTION 250

- (Exam Topic 3)

Which action do webhooks enable an application to perform?

- A. Increase the request rate limit.
- B. Populate the application with restricted data.
- C. Receive real-time data.
- D. Implement a push model.

**Answer:** D

#### Explanation:

Simplifying the wording: Webhook enables the app to ( push or receive real time) . The clients should receive real time but the app pushes.

#### NEW QUESTION 251

- (Exam Topic 3)

Which solution reduces costs from MPLS, improves application performance, and simplifies operations?

- A. Cisco NSO
- B. Cisco SD-WAN
- C. Cisco ACI
- D. Cisco DNA Center

**Answer:** B

#### NEW QUESTION 252

- (Exam Topic 3)

A developer attempts to refactor and improve the application code. It is noticed that the code contains several pieces of key information that could be a security threat if this code is accessible by those who are not authorized to this data. Which approach addresses the security concerns noticed by the developer?

- A. Host the application code on a machine located in a secure data center.
- B. Utilize environment variables for username and password details.
- C. Rely on the security teams' goodwill to not give access to those who do not need it.
- D. Move the hardware that the application is deployed on to a secure location.

**Answer:** B

#### NEW QUESTION 257

- (Exam Topic 3)

What is a function of the default gateway in a network?

- A. to drop traffic that is destined to the default gateway
- B. to forward traffic to different subnets
- C. to forward traffic to the same subnet
- D. to drop traffic that is not destined to the default gateway

**Answer:** B

#### NEW QUESTION 259

- (Exam Topic 3)

Which platform has an API that has the capability to obtain a list of vulnerable software on user devices?

- A. Cisco Advanced Malware Protection
- B. Cisco Umbrella
- C. Cisco Identity Services Engine
- D. Cisco Firepower

**Answer:** A

#### NEW QUESTION 262

- (Exam Topic 3)

Which port does HTTPS use by default?

- A. 433
- B. 443
- C. 803
- D. 883

**Answer:** B

#### NEW QUESTION 266

- (Exam Topic 3)

```
import requests
from requests.auth import HTTPBasicAuth

user= "user"
password= "PASSWORD"

token=requests.post('https://<DNAC ADRESS>/dna/system/api/v1/auth/token',
)
```

Refer to the exhibit. A developer must use a token to collect data from Cisco DNA Center API and prepares a Python script to send requests. Which line of code needs to be placed on the snippet where the code is missing to obtain a token from the Cisco DNA Center API?

- A. token=BasicAuth('user','password'))
- B. auth=BasicAuth('user','password'))
- C. auth=HTTPBasicAuth(user,password))
- D. token=HTTPBasicAuth(user,password))

**Answer: C**

#### NEW QUESTION 268

- (Exam Topic 2)

Which Cisco product provides malware and content filtering through DNS?

- A. Cisco ASA Firepower module
- B. Cisco AMP
- C. Cisco ISE
- D. Cisco Umbrella

**Answer: D**

#### NEW QUESTION 269

- (Exam Topic 2)

What is the main purpose of a code review?

- A. To provide the technical lead visibility into all code
- B. To identify and review errors with the team
- C. To ensure that all code is checked in simultaneously
- D. To detect logical errors

**Answer: B**

#### NEW QUESTION 273

- (Exam Topic 2)

Refer to the exhibit.

```
import requests, sys
from config import user, password

url = "http://restconf.devnet.com:9443/api/running/interfaces"
headers = 
response = requests.put(url, auth=(user, password), headers=headers,
verify=False)
print(response.text)
```

A network engineer wants to use an API to update information about device interfaces. The network devices are deployed in a Cisco DevNet Sandbox and have running interfaces. Which line of code needs to be placed in the snippet where the code is missing?

- A. {'Content-Type': 'application/yang.data+xml', 'Accept': 'application/yang.data+xml'}
- B. {'Content-Type': 'application/yang.data+yaml', 'Accept': 'application/yang.data+yaml'}
- C. {'Content-Type': 'application/restconf.data+json', 'Accept': 'application/ restconf.data+json'}
- D. {'Content-Type': 'application/yang.data+utf8', 'Accept': 'application/ restconf.data+utf8'}

**Answer: C**

#### NEW QUESTION 275

- (Exam Topic 2)

What is a capability of an agentless configuration management system?

- A. It requires managed hosts to have an interpreter for a high-level language such as Python or Ruby.
- B. It requires managed hosts to connect to a centralized host to receive updated configurations.
- C. It uses compiled languages as the basis of the domain-specific language to interface with managed hosts.
- D. It uses existing protocols to interface with the managed host.

**Answer: D**



#### NEW QUESTION 279

- (Exam Topic 3)

What is a comparison of YAML and JSON?

- A. YAML has a more consistent approach to representing data compared to JSON.
- B. JSON does not support comments and YAML does.
- C. YAML is a more verbose data structure compared to JSON.
- D. JSON has more common usage in configuration management tools compared to YAML.

**Answer: B**

**Explanation:**

Reference: <https://stackoverflow.com/questions/244777/can-comments-be-used-in-json>

Can I use comments in JSON? No, JSON is a data-only format. Comments in the form `//`, `#`, or `/* */`, which are used in popular programming languages, are not allowed in JSON. You can add comments to JSON as custom JSON elements that will hold your comments, but these elements will still be data.

#### NEW QUESTION 284

- (Exam Topic 3)

A developer pushes an application to production. The application receives a webhook over HTTPS without a secret. The webhook information contains credentials to service in cleartext. When the information is received, it is stored in the database with an SHA-256 hash. Credentials to the database are accessed at runtime through the use of a vault service. While troubleshooting, the developer sets the logging to debug to view the message from the webhook. What is the security issue in this scenario?

- A. Database credentials should be accessed by using environment variables defined at runtime.
- B. During the transport of webhook messages, the credentials could be unencrypted and leaked.
- C. During logging, debugging should be disabled for the webhook message.
- D. Hashing the credentials in the database is not secure enough; the credentials should be encrypted.

**Answer: B**

#### NEW QUESTION 287

- (Exam Topic 3)

Which Cisco platform is used to manage data center infrastructure through third-party tools and system integrations?

- A. Cisco DNA Center
- B. Cisco UCS Manager
- C. Cisco Intersight
- D. Cisco UCS Director

**Answer: D**

#### NEW QUESTION 290

- (Exam Topic 3)

Which function does a router provide to a network?

- A. broadcast domain segmentation
- B. unique host on a Layer 3 network
- C. unique hardware address for every node on a LAN
- D. broadcast domain extension

**Answer: B**

#### NEW QUESTION 293

- (Exam Topic 3)

A customer's cloud services must:

Migrate services to another data center on demand. Save the operational state of the machine on demand. Support Windows and Linux GUIs.

Maximize hardware utilization.

Which type of deployment meets these requirements?

- A. bare metal
- B. container
- C. virtual machine
- D. Kubernetes

**Answer: C**

#### NEW QUESTION 298

- (Exam Topic 3)

A developer is working on a new feature in a branch named 'newfeat123456789' and the current working primary branch is named 'prim987654321'. The developer requires a merge commit during a fast forward merge for record-keeping purposes. Which Git command must be used?

- A. `git merge --no-ff newfeat123456789`
- B. `git commit --no-ff newfeat123456789`
- C. `git add --commit-ff newfeat123456789`
- D. `git reset --commit-ff newfeat123456789`

**Answer:** A

#### NEW QUESTION 300

- (Exam Topic 3)

To which stage of development do Infrastructure as Code principles relate?

- A. manual configuration
- B. service provisioning
- C. physical deployment
- D. requirement collection

**Answer:** B

#### NEW QUESTION 305

- (Exam Topic 3)

A developer is developing a web application that uses username and password to authenticate to the next service. The user credentials must be available at any time in the application. The developer must choose and implement a secure method of storing the authentication credentials that are used in the automation code. Which password handling method must be used to minimize the security risk?

- A. Store the username and password in a separate configuration file.
- B. Store the username and password in a vault.
- C. Store the passwords in a dictionary.
- D. Store the username and password in code.

**Answer:** B

#### NEW QUESTION 306

- (Exam Topic 3)

Which Python function is used to parse a string that contains JSON data into a Python dictionary?

- A. json.dumps()
- B. json.to\_json()
- C. json.parse()
- D. json.loads()

**Answer:** D

#### Explanation:

loads() function is present in python built-in 'json' module. This function is used to parse the JSON string.

#### NEW QUESTION 309

- (Exam Topic 3)

A group of software developers wants to improve its collaboration with the operations team. The group wants to deliver release-ready code that merges code changes back to the main branch and runs the automated testing as often as possible. Which DevOps concept does this scenario represent?

- A. continuous delivery
- B. version control
- C. continuous integration
- D. continuous deployment

**Answer:** C

#### NEW QUESTION 312

- (Exam Topic 3)

```
1 import requests
2 from requests.auth import HTTPBasicAuth
3 BASE_URL = 'https://<IP ADDRESS or FQDN>'
4 AUTH_URL = '/dna/system/api/v1/auth/token'
5 TOKEN = '<TOKEN>'
6
7 headers = {'X-Auth-Token': TOKEN, 'Content-Type': 'application/json'}
8
9 DEVICES_COUNT_URL = '/dna/intent/api/v1/network-device/count'
10 DEVICES_URL = '/dna/intent/api/v1/network-device'
11 DEVICES_BY_ID_URL = '/dna/intent/api/v1/network-device/'
12
13 def devices_func(headers):
14     response = requests.get(BASE_URL + DEVICES_COUNT_URL,
15                             headers = headers, verify=False)
16     return response.json()['response']
17
18 def devices_test(headers, query_string_params):
19     response = requests.get(BASE_URL + DEVICES_URL, headers = headers,
20                             params = query_string_params, verify=False)
21     return response.json()['response']
22
23 def devices_info(headers, device_id):
24     response = requests.get(BASE_URL + DEVICES_BY_ID_URL + device_id,
25                             headers = headers, verify=False)
26     return response.json()['response']
27
28 print(devices_func(headers))
29 print(devices_test(headers, {}))
30 print(devices_test(headers, {'hostname': 'CSR1Kv-01.devnet.local'}))
31 response = devices_test(headers, {'platformId': 'C9500-40X'})
32 print(devices_info(headers, response[0]['id']))
```

Refer to the exhibit. An engineer prepares a script to automate workflow by using Cisco DNA Center APIs to display:

total count of devices

list of the network devices

information of one device with a hostname filter

What is displayed in the final step after the Python script is executed?

- A. information about a device of type C9500-40x.
- B. filtered results by the hostname and the platformId C9500-40X
- C. information about the test devices
- D. list of devices with platformId C9500-40x

**Answer: B**

#### NEW QUESTION 315

- (Exam Topic 3)

A company wants to automate the orders processed on its website using API. The network device that supports the solution must:

- support XML encoding
- support distributed transactions
- support YANG data models
- be support software redundancy

Which requirement prevents the use of RESTCONF for the solution?

- A. software redundancy
- B. YANG data models
- C. distributed transactions
- D. XML encoding

**Answer: C**

#### NEW QUESTION 320

- (Exam Topic 3)

Which standard supported by Cisco IOS XE and Cisco NX-OS is used for automating the configuration of multiple devices across a network?

- A. SNMP – YANG
- B. SYSLOG – YANG
- C. CLI – YANG
- D. NETCONF – YANG

**Answer: D**

#### NEW QUESTION 321

- (Exam Topic 3)

How are operations on REST APIs performed as compared to RPC APIs?

- A. In a REST API, operations are performed on an object (node) that is identified by a URL, but RPC APIs are operation-oriented.
- B. In a REST API, operations are performed on an external resource that is defined on the API, but the RCP APIs are resource-oriented.



- C. In a REST API, operations are performed on a platform that is identified by the URL, but RPC APIs are platform-oriented.  
D. In a REST API, operations are performed on an internal resource that is defined on the API, but RPC APIs are resource-oriented.

**Answer:** D

**Explanation:**

In a REST API, operations are performed on resources, which are accessed and manipulated using HTTP verbs such as GET, POST, PUT, and DELETE. These resources are identified by a URL and are defined within the API. For example, an API may define a resource called "customers", which can be accessed using the URL "http://api.example.com/customers". To retrieve a list of customers, the client could make a GET request to this URL. To create a new customer, the client could make a POST request to the same URL with the necessary data in the request body. In contrast, in an RPC API, operations are performed by making function calls. The client makes a request to the server, specifying the function to be called and any necessary parameters. The server then executes the function and returns the result to the client. RPC APIs are operation-oriented, meaning that the focus is on the function being called rather than the resource being accessed.

**NEW QUESTION 326**

- (Exam Topic 3)

A developer plans to deploy a new application that will use an API to implement automated data collection from Webex with these requirements:

The application was created by using the request library. Requires HTTP basic authentication.

Provides data in JSON or XML formats.

Which Cisco DevNet resource helps the developer with how to use the API?

- A. DevNet sandbox
- B. API documentation
- C. forums
- D. DevNet code exchange

**Answer:** B

**NEW QUESTION 329**

- (Exam Topic 3)

Which protocol is used for clock synchronization between network devices?

- A. FTP
- B. NNTP
- C. BGP
- D. NTP

**Answer:** D

**Explanation:**

Network Time Protocol (NTP) is an internet protocol used to synchronize with computer clock time sources in a network. It belongs to and is one of the oldest parts of the TCP/IP suite. The term NTP applies to both the protocol and the client-server programs that run on computers.

**NEW QUESTION 333**

- (Exam Topic 3)

An engineer must configure Cisco Nexus devices and wants to automate this workflow. The engineer will use an Ansible playbook to configure devices through Cisco NX REST API. Before the code is run, which resource must be used to verify that the REST API requests work as expected?

- A. Cisco Open NX-OS
- B. Cisco NX-OS SDK
- C. Cisco Learning Labs
- D. Cisco Code Exchange for Nexus

**Answer:** C

**NEW QUESTION 336**

- (Exam Topic 3)

Which OWASP threat occurs when untrusted data is supplied as input to an interpreter as part of a command or query?

- A. broken authentication
- B. data exposure
- C. injection
- D. cross-site scripting

**Answer:** C

**NEW QUESTION 341**

- (Exam Topic 3)

A developer creates an application that must provide an encrypted connection or API keys. The keys will be used to communicate with a REST API. Which command must be used for the secure connection?

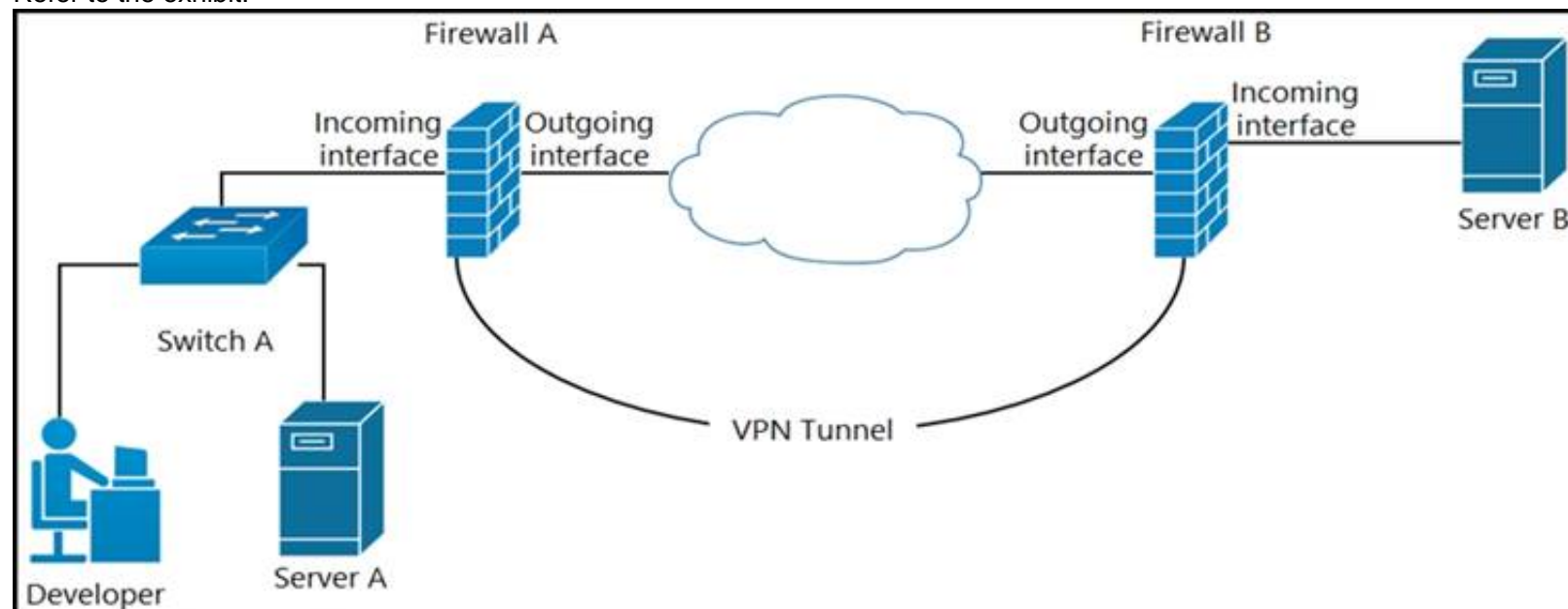
- A. curl-X PUSH 'http://username.app.com/endpoint/?api\_key=12345abcdef'
- B. curl -v 'ftp://username.app.com/endpoint/?api\_key=12345abcdef'
- C. curl -X GET 'https://username.app.com/endpoint/?api\_key=12345abcdef'
- D. curl-X GET 'http://username.app.com/endpoint/?api\_key=12345abcdef'

**Answer:** C

#### NEW QUESTION 344

- (Exam Topic 3)

Refer to the exhibit.



A developer can access the TLS REST API on server A, but cannot access the API on server B. The developer can ping server B. When the developer performs a packet capture on the TLS REST API port on server B, the capture shows that the packet arrived and the server responded. What causes the issue?

- A. Port 80 is blocked on the outgoing interface of firewall B.
- B. Port 443 is blocked on the outgoing interface of firewall A.
- C. Port 443 is blocked on the incoming interface of firewall B.
- D. Port 80 is blocked on the incoming interface of firewall A.

**Answer: C**

#### NEW QUESTION 349

- (Exam Topic 3)

An engineer prepares a set of Python scripts to interact with network devices. To avoid network performance issues, the engineer wants to run them in a test environment. Which resource must be used to monitor the live execution of code in an always-available environment?

- A. packet tracer
- B. learning labs
- C. sandbox
- D. code exchange

**Answer: C**

#### NEW QUESTION 350

- (Exam Topic 3)

What are two benefits of implementing common data structures when working with APIs in remote systems? (Choose two.)

- A. ensures that developers are limited to using one data schema type
- B. prevents multivendor interoperability
- C. improves security in RESTful web services
- D. enforces standardized data structures
- E. leverages code that is easily managed and reused

**Answer: BE**

#### NEW QUESTION 355

- (Exam Topic 3)

What is the purpose of grouping devices in a VLAN?

- A. Devices communicate as if they are connected on the same wire.
- B. Multicast network traffic is limited to the VLAN connected devices.
- C. Unicast messages are limited to the clients connected on the same VLAN.
- D. Network traffic is load balanced between the devices connected to the VLAN.

**Answer: B**

#### NEW QUESTION 357

- (Exam Topic 3)

What is a principle of a code review process?

- A. Changes are made after the code is submitted to source control.
- B. It must not prevent code from getting into production as quickly as possible.
- C. Naming standards must be consistent.
- D. A technical lead must sign off on the review.

**Answer: D**

#### NEW QUESTION 359

- (Exam Topic 3)

An engineer deploys a Cisco CSR 1000 V instance to a virtual machine. The engineer must output the device configuration in JSON format. Which protocol is used for this task?

- A. YANG
- B. NETCONF
- C. SNMP
- D. RESTCONF

Answer: D

#### NEW QUESTION 363

- (Exam Topic 3)

**POST** /v1/meetings

**Body Parameters**

**title**  
string Required  
Meeting title. The title can be a maximum of 128 characters long.

**agenda**  
string  
Meeting agenda. The agenda can be a maximum of 2500 characters long.

**password**  
string  
Meeting password. Must conform to the site's password complexity settings. Read [password management](#) for details. If not specified, a random password conforming to the site's password rules will be generated automatically.

**start**  
string Required  
Date and time for the start of meeting in any [ISO 8601](#) compliant format. start cannot be before current date and time or after end. Duration between start and end cannot be shorter than 10 minutes or longer than 24 hours.

**end**  
string Required  
Date and time for the end of meeting in any [ISO 8601](#) compliant format. end cannot be before current date and time or before start. Duration between start and end cannot be shorter than 10 minutes or longer than 24 hours.

Refer to the exhibit. A bespoke meeting booking system must be integrated with Cisco Webex so that meetings are created automatically. Drag and drop the code from the bottom onto the box where the code is missing to create a sample meeting. Not all options are used.



```
import requests, json

[ ] = 'eyJhbGc ... yJbN8'

headers = {
    'Authorization': f'Bearer {token}',
    'Content-Type': 'application/json'
}

payload = {
    "title": "DevNet Webex Discussion",
    "password": "AGrtgl234",
    "start": "2020-11-10T15:00:00Z",
    "end": "2020-11-10T17:00:00Z",
    "enabledAutoRecordMeeting": False,
    "allowAnyUserToBeCoHost": False
}

response = requests.request(" [ ] ", f'{BASE_URL}/ [ ] ',
    headers=headers, data=json.dumps( [ ] ))
print(response.text.encode('utf8'))
```

payload	PUT	token
vl/meeting	vl/meetings	POST

- A. Mastered  
B. Not Mastered

**Answer: A**

**Explanation:**

```
import requests, json

token = 'eyJhbGc ... yJbN8'

headers = {
    'Authorization': f'Bearer {token}',
    'Content-Type': 'application/json'
}

payload = {
    "title": "DevNet Webex Discussion",
    "password": "AGrtgl234",
    "start": "2020-11-10T15:00:00Z",
    "end": "2020-11-10T17:00:00Z",
    "enabledAutoRecordMeeting": False,
    "allowAnyUserToBeCoHost": False
}

response = requests.request(" POST ", f'{BASE_URL}/ vl/meetings ',
    headers=headers, data=json.dumps( payload ))
print(response.text.encode('utf8'))
```

payload	PUT	token
vl/meeting	vl/meetings	POST

#### NEW QUESTION 368

- (Exam Topic 3)

A company requires a new platform to store large volumes of log data that is generated in their assembly plant. The platform must be scalable, so the underlying technology must provide a path for fast deployment of new nodes for data and indexing? The data contains sensitive information, so specialist encryption tools must be used to secure the data. Which application deployment model meets the requirements?

- A. edge  
B. private cloud  
C. public cloud  
D. hybrid cloud

**Answer: D**

**Explanation:**

A hybrid cloud combines the benefits of both a private cloud, which offers the ability to store sensitive data in a secure, dedicated environment, and a public cloud,

which offers the ability to scale quickly and easily by deploying new nodes as needed. With a hybrid cloud deployment, you could use specialist encryption tools to secure the sensitive data in the private cloud, and then take advantage of the scalability and flexibility of the public cloud to handle the large volumes of log data.

#### NEW QUESTION 371

.....

## Relate Links

**100% Pass Your 200-901 Exam with ExamBible Prep Materials**

<https://www.exambible.com/200-901-exam/>

## Contact us

We are proud of our high-quality customer service, which serves you around the clock 24/7.

Viste - <https://www.exambible.com/>