

Microsoft

Exam Questions AI-900

Microsoft Azure AI Fundamentals (beta)



NEW QUESTION 1

HOTSPOT - (Topic 5)

You have an app that identifies birds in images. The app performs the following tasks:

- * Identifies the location of the birds in the image
- * Identifies the species of the birds in the image

Which type of computer vision does each task use? To answer, select the appropriate options in the answer area.

NOTE: Each correct selection is worth one point.

Answer Area

Locate the birds:

- Object detection
- Automated captioning
- Image classification
- Object detection
- Optical character recognition (OCR)

Identify the species of the birds:

- Image classification
- Automated captioning
- Image classification
- Object detection
- Optical character recognition (OCR)

- A. Mastered
- B. Not Mastered

Answer: A

Explanation:

Answer Area

Locate the birds:

- Object detection
- Automated captioning
- Image classification
- Object detection
- Optical character recognition (OCR)

Identify the species of the birds:

- Image classification
- Automated captioning
- Image classification
- Object detection
- Optical character recognition (OCR)

NEW QUESTION 2

- (Topic 5)

You have a frequently asked questions (FAQ) PDF file.

You need to create a conversational support system based on the FAQ.

Which service should you use?

- A. QnA Maker
- B. Text Analytics
- C. Computer Vision
- D. Language Understanding (LUIS)

Answer: A

Explanation:

QnA Maker is a cloud-based API service that lets you create a conversational question- and-answer layer over your existing data. Use it to build a knowledge base by extracting questions and answers from your semi-structured content, including FAQs, manuals, and documents.

Reference:

<https://azure.microsoft.com/en-us/services/cognitive-services/qna-maker/>

NEW QUESTION 3

- (Topic 5)

You plan to build a conversational AI solution that can be surfaced in Microsoft Teams, Microsoft Cortana, and Amazon Alexa. Which service should you use?

- A. Azure Bot Service
- B. Azure Cognitive Search
- C. Language service
- D. Speech

Answer: A

NEW QUESTION 4

HOTSPOT - (Topic 5)

You have an Azure Machine Learning model that predicts product quality. The model has a training dataset that contains 50,000 records. A sample of the data is shown in the following table.

Date	Time	Mass (kg)	Temperature (C)	Quality Test
26/02/2021	15:31:07	2.108	62.5	Pass
26/02/2021	15:31:39	2.099	62.4	Pass
26/02/2021	02:32:21	2.098	66.4	Fail

For each of the following Statements, select Yes if the statement is true. Otherwise, select No.

NOTE: Each correct selection is worth one point.

Answer Area

Statements	Yes	No
Mass (kg) is a feature.	<input type="radio"/>	<input type="radio"/>
Quality Test is a label.	<input type="radio"/>	<input type="radio"/>
Temperature (C) is a label.	<input type="radio"/>	<input type="radio"/>

- A. Mastered
B. Not Mastered

Answer: A

Explanation:

Answer Area

Statements	Yes	No
Mass (kg) is a feature.	<input checked="" type="radio"/>	<input type="radio"/>
Quality Test is a label.	<input checked="" type="radio"/>	<input type="radio"/>
Temperature (C) is a label.	<input type="radio"/>	<input checked="" type="radio"/>

NEW QUESTION 5

HOTSPOT - (Topic 5)

Select the answer that correctly completes the sentence.

Answer Area

The interactive answering of questions entered by a user as part of an application is an example of

anomaly detection.

computer vision.

natural language processing.

forecasting.

- A. Mastered
B. Not Mastered

Answer: A

Explanation:

Answer Area

The interactive answering of questions entered by a user as part of an application is an example of

anomaly detection.

computer vision.

natural language processing.

forecasting.

NEW QUESTION 6

DRAG DROP - (Topic 5)

Match the tool to the Azure Machine Learning task.

To answer, drag the appropriate tool from the column on the left to its tasks on the right. Each tool may be used once, more than once, or not at all

NOTE: Each correct match is worth one point.

Tools	Answer Area
Automated machine learning (automated ML)	Tool Create a Machine Learning workspace
The Azure portal	Tool Use a drag-and-drop interface used to train and deploy models
Machine Learning designer	Tool Use a wizard to select configurations for a machine learning run

- A. Mastered
B. Not Mastered

Answer: A

Explanation:

Tools	Answer Area
Automated machine learning (automated ML)	The Azure portal Create a Machine Learning workspace
The Azure portal	Machine Learning designer Use a drag-and-drop interface used to train and deploy models
Machine Learning designer	Automated machine learning (automated ML) Use a wizard to select configurations for a machine learning run

NEW QUESTION 7

HOTSPOT - (Topic 5)

For each of the following statements, select Yes if the statement is true. Otherwise, select No.

NOTE: Each correct selection is worth one point.

Statements	Yes	No
A webchat bot can interact with users visiting a website	<input type="radio"/>	<input type="radio"/>
Automatically generating captions for pre-recorded videos is an example of conversational AI	<input type="radio"/>	<input type="radio"/>
A smart device in the home that responds to questions such as “What will the weather like today?” is an example of conversational AI	<input type="radio"/>	<input type="radio"/>

- A. Mastered
- B. Not Mastered

Answer: A

Explanation:

Statements	Yes	No
A webchat bot can interact with users visiting a website	<input checked="" type="radio"/>	<input type="radio"/>
Automatically generating captions for pre-recorded videos is an example of conversational AI	<input type="radio"/>	<input checked="" type="radio"/>
A smart device in the home that responds to questions such as “What will the weather like today?” is an example of conversational AI	<input checked="" type="radio"/>	<input type="radio"/>

NEW QUESTION 8

HOTSPOT - (Topic 5)

For each of the following statements, select Yes if the statement is true. Otherwise, select No.

NOTE: Each correct selection is worth one point.

Statements	Yes	No
A webchat bot can interact with users visiting a website.	<input type="radio"/>	<input type="radio"/>
Automatically generating captions for pre-recorded videos is an example of conversational AI.	<input type="radio"/>	<input type="radio"/>
A smart device in the home that responds to questions such as “What will the weather be like today?” is an example of conversational AI.	<input type="radio"/>	<input type="radio"/>

- A. Mastered
- B. Not Mastered

Answer: A

Explanation:

Statements	Yes	No
A webchat bot can interact with users visiting a website.	<input checked="" type="radio"/>	<input type="radio"/>
Automatically generating captions for pre-recorded videos is an example of conversational AI.	<input checked="" type="radio"/>	<input type="radio"/>
A smart device in the home that responds to questions such as "What will the weather be like today?" is an example of conversational AI.	<input checked="" type="radio"/>	<input type="radio"/>

NEW QUESTION 9

- (Topic 5)

You have an Azure Machine Learning model that uses clinical data to predict whether a patient has a disease. You clean and transform the clinical data. You need to ensure that the accuracy of the model can be proven. What should you do next?

- A. Train the model by using the clinical data.
- B. Split the clinical data into Two datasets.
- C. Train the model by using automated machine learning (automated ML).
- D. Validate the model by using the clinical data.

Answer: D

NEW QUESTION 10

HOTSPOT - (Topic 5)

For each of the following statements, select Yes if the statement is true. Otherwise, select No.
NOTE: Each correct selection is worth one point.

Statements	Yes	No
A restaurant can use a chatbot to empower customers to make reservations by using a website or an app.	<input type="radio"/>	<input type="radio"/>
A restaurant can use a chatbot to answer inquiries about business hours from a webpage.	<input type="radio"/>	<input type="radio"/>
A restaurant can use a chatbot to automate responses to customer reviews on an external website.	<input type="radio"/>	<input type="radio"/>

- A. Mastered
- B. Not Mastered

Answer: A

Explanation:

Statements	Yes	No
A restaurant can use a chatbot to empower customers to make reservations by using a website or an app.	<input checked="" type="radio"/>	<input type="radio"/>
A restaurant can use a chatbot to answer inquiries about business hours from a webpage.	<input checked="" type="radio"/>	<input type="radio"/>
A restaurant can use a chatbot to automate responses to customer reviews on an external website.	<input checked="" type="radio"/>	<input type="radio"/>

NEW QUESTION 10

- (Topic 5)

You need to create a customer support solution to help customers access information. The solution must support email, phone, and live chat channels. Which type of AI solution should you use?

- A. natural language processing (NLP)
- B. computer vision
- C. machine learning
- D. chatbot

Answer: D

NEW QUESTION 13

HOTSPOT - (Topic 5)

Select the answer that correctly completes the sentence.

Answer Area

Predicting how many hours of overtime a delivery person will work based on the number of orders received is an example of

classification.
 clustering.
 regression.

- A. Mastered
- B. Not Mastered

Answer: A

Explanation:

Answer Area

Predicting how many hours of overtime a delivery person will work based on the number of orders received is an example of

classification.
 clustering.
 regression.

NEW QUESTION 18

- (Topic 5)

You need to develop a web-based AI solution for a customer support system. Users must be able to interact with a web app that will guide them to the best resource or answer.

Which service should you use?

- A. Custom Vision
- B. QnA Maker
- C. Translator Text
- D. Face

Answer: B

Explanation:

QnA Maker is a cloud-based API service that lets you create a conversational question- and-answer layer over your existing data. Use it to build a knowledge base by extracting questions and answers from your semistructured content, including FAQs, manuals, and documents. Answer users' questions with the best answers from the QnAs in your knowledge base—automatically. Your knowledge base gets smarter, too, as it continually learns from user behavior.

Reference:

<https://azure.microsoft.com/en-us/services/cognitive-services/qna-maker/>

NEW QUESTION 23

- (Topic 5)

Which scenario is an example of a webchat bot?

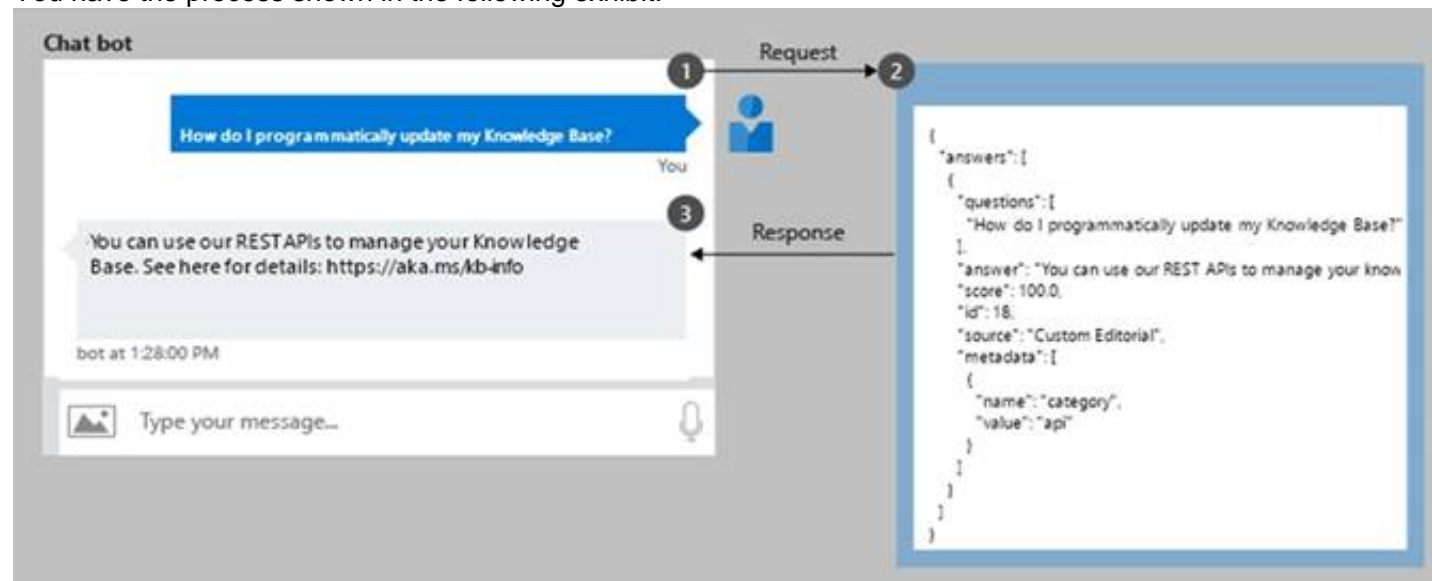
- A. Determine whether reviews entered on a website for a concert are positive or negative, and then add athumbs up or thumbs down emoji to the reviews.
- B. Translate into English questions entered by customers at a kiosk so that the appropriate person can call the customers back.
- C. Accept questions through email, and then route the email messages to the correct person based on the content of the message.
- D. From a website interface, answer common questions about scheduled events and ticket purchases for a music festival.

Answer: D

NEW QUESTION 28

- (Topic 5)

You have the process shown in the following exhibit.



Which type AI solution is shown in the diagram?

- A. a sentiment analysis solution
- B. a chatbot
- C. a machine learning model
- D. a computer vision application

Answer: B

NEW QUESTION 30

- (Topic 5)
Your company manufactures widgets.
You have 1.000 digital photos of the widgets.
You need to identify the location of the widgets within the photos. What should you use?

- A. Computer Vision Spatial Analysis
- B. Custom Vision object detection
- C. Custom Vision classification
- D. Computer Vision Image Analysis

Answer: B

NEW QUESTION 35

HOTSPOT - (Topic 5)
For each of the following statements, select Yes if the statement is True. Otherwise, select No. NOTE: Each correct selection is worth one point.

Answer Area

Statements	Yes	No
A smart device in the home that responds to questions such as "When is my next appointment?" is an example of conversational AI.	<input type="radio"/>	<input type="radio"/>
An interactive webchat feature on a company website can be implemented by using Azure Bot Service.	<input type="radio"/>	<input type="radio"/>
Automatically generating captions for pre-recorded videos is an example of conversational AI.	<input type="radio"/>	<input type="radio"/>

- A. Mastered
- B. Not Mastered

Answer: A

Explanation:

Answer Area

Statements	Yes	No
A smart device in the home that responds to questions such as "When is my next appointment?" is an example of conversational AI.	<input checked="" type="radio"/>	<input type="radio"/>
An interactive webchat feature on a company website can be implemented by using Azure Bot Service.	<input checked="" type="radio"/>	<input type="radio"/>
Automatically generating captions for pre-recorded videos is an example of conversational AI.	<input checked="" type="radio"/>	<input type="radio"/>

NEW QUESTION 39

HOTSPOT - (Topic 5)
For each of the following statements, select Yes if the statement is true. Otherwise, select No.
NOTE: Each correct selection is worth one point.

Statements	Yes	No
You can use QnA Maker to query an Azure SQL database.	<input type="radio"/>	<input type="radio"/>
You should use QnA Maker when you want a knowledge base to provide the same answer to different users who submit similar questions.	<input type="radio"/>	<input type="radio"/>
The QnA Maker service can determine the intent of a user utterance.	<input type="radio"/>	<input type="radio"/>

- A. Mastered
- B. Not Mastered

Answer: A

Explanation:

Statements	Yes	No
You can use QnA Maker to query an Azure SQL database.	<input type="radio"/>	<input checked="" type="radio"/>
You should use QnA Maker when you want a knowledge base to provide the same answer to different users who submit similar questions.	<input checked="" type="radio"/>	<input type="radio"/>
The QnA Maker service can determine the intent of a user utterance.	<input type="radio"/>	<input checked="" type="radio"/>

NEW QUESTION 40

HOTSPOT - (Topic 5)

For each of the following statements, select Yes if the statement is true. Otherwise, select No. NOTE: Each correct selection is worth one point.

Answer Area			
Statements		Yes	No
You can use Language Service's question answering to query an Azure SQL database.		<input type="radio"/>	<input type="radio"/>
You should use Language Service's question answering when you want a knowledge base to provide the same answer to different users who submit similar questions.		<input type="radio"/>	<input type="radio"/>
Language Service's question answering can determine the intent of a user utterance.		<input type="radio"/>	<input type="radio"/>

- A. Mastered
- B. Not Mastered

Answer: A

NEW QUESTION 44

- (Topic 5)

Which machine learning technique can be used for anomaly detection?

- A. A machine learning technique that understands written and spoken language.
- B. A machine learning technique that classifies objects based on user supplied images.
- C. A machine learning technique that analyzes data over time and identifies unusual changes.
- D. A machine learning technique that classifies images based on their contents.

Answer: C

NEW QUESTION 46

- (Topic 5)

You have an AI-based loan approval system.

During testing, you discover that the system has a gender bias. Which responsible AI principle does this violate?

- A. accountability
- B. transparency
- C. fairness
- D. reliability and safety

Answer: C

NEW QUESTION 51

- (Topic 5)

You are building a chatbot that will use natural language processing (NLP) to perform the following actions based on the text input of a user:

- Accept customer orders.
- Retrieve support documents.
- Retrieve order status updates. Which type of NLP should you use?

- A. sentiment analysis
- B. translation
- C. language modeling
- D. named entity recognition

Answer: D

NEW QUESTION 52

- (Topic 5)

An app that analyzes social media posts to identify their tone is an example of which type of natural language processing (NLP) workload?

- A. sentiment analysis
- B. key phrase extraction

- C. entity recognition
- D. speech recognition

Answer: A

NEW QUESTION 54

HOTSPOT - (Topic 5)

Select the answer that correctly completes the sentence.

Answer Area

For

feature engineering

time constraints

feature engineering

MLflow models

model training

, you use a portion of a dataset to prepare a machine learning

model and retain the balance of the dataset to verify the results.

- A. Mastered
- B. Not Mastered

Answer: A

Explanation:

Answer Area

For

feature engineering

time constraints

feature engineering

MLflow models

model training

, you use a portion of a dataset to prepare a machine learning

model and retain the balance of the dataset to verify the results.

NEW QUESTION 55

HOTSPOT - (Topic 5)

For each of the following statements, select Yes if the statement is true. Otherwise, select No.

NOTE; Each correct selection is worth one point.

Answer Area

Statements	Yes	No
The Language service can identify in which language text is written.	<input type="radio"/>	<input type="radio"/>
The Language service can detect handwritten signatures in a document.	<input type="radio"/>	<input type="radio"/>
The Language service can identify companies and organizations mentioned in a document.	<input type="radio"/>	<input type="radio"/>

- A. Mastered
- B. Not Mastered

Answer: A

Explanation:

Answer Area

Statements	Yes	No
The Language service can identify in which language text is written.	<input checked="" type="radio"/>	<input type="radio"/>
The Language service can detect handwritten signatures in a document.	<input type="radio"/>	<input checked="" type="radio"/>
The Language service can identify companies and organizations mentioned in a document.	<input checked="" type="radio"/>	<input type="radio"/>

NEW QUESTION 58

- (Topic 5)

You have a custom question answering solution.

You create a bot that uses the knowledge base to respond to customer requests. You need to identify what the bot can perform without adding additional skills.

What should you identify?

- A. Register customer complaints.
- B. Answer questions from multiple users simultaneously.
- C. Register customer purchases.

D. Provide customers with return materials authorization (RMA) numbers.

Answer: B

NEW QUESTION 61

HOTSPOT - (Topic 5)

For each of the following statements, select Yes if the statement is true. Otherwise, select No.

NOTE: Each correct selection is worth one point.

Statements	Yes	No
You can communicate with a bot by using Cortana.	<input type="radio"/>	<input type="radio"/>
You can communicate with a bot by using Microsoft Teams.	<input type="radio"/>	<input type="radio"/>
You can communicate with a bot by using a webchat interface.	<input type="radio"/>	<input type="radio"/>

- A. Mastered
- B. Not Mastered

Answer: A

Explanation:

Statements	Yes	No
You can communicate with a bot by using Cortana.	<input checked="" type="radio"/>	<input type="radio"/>
You can communicate with a bot by using Microsoft Teams.	<input checked="" type="radio"/>	<input type="radio"/>
You can communicate with a bot by using a webchat interface.	<input checked="" type="radio"/>	<input type="radio"/>

NEW QUESTION 65

- (Topic 5)

You have a natural language processing (NLP) model that was created by using data obtained without permission. Which Microsoft principle for responsible AI does this breach?

- A. privacy and security
- B. inclusiveness
- C. transparency
- D. reliability and safety

Answer: C

NEW QUESTION 69

DRAG DROP - (Topic 5)

Match the Azure Cognitive Services service to the appropriate actions.

To answer, drag the appropriate service from the column on the left to its action on the right. Each service may be used once, more than once, or not at all.

NOTE: Each correct match is worth one point.

Services	Answer Area
Speech	<input type="text"/> Convert a user's speech to text.
Language service	<input type="text"/> Identify a user's intent.
Translator Text	<input type="text"/> Provide a spoken response to the user.

- A. Mastered
- B. Not Mastered

Answer: A

Explanation:

Services

Speech

Language service

Translator Text

Answer Area

Speech

Language service

Speech

Convert a user's speech to text.

Identify a user's intent.

Provide a spoken response to the user.

NEW QUESTION 72

DRAG DROP - (Topic 5)

Match the principles of responsible AI to the appropriate descriptions.

To answer, drag the appropriate principle from the column on the left to its description on the right. Each principle may be used once, more than once, or not at all.

NOTE: Each correct match is worth one point.

Principles

Fairness

Inclusiveness

Privacy and securit

Reliability and safe

Answer Area

AI systems must consistently operate as intended, even under unexpected conditions.

AI systems must protect and secure personal and businesses information.

- A. Mastered
- B. Not Mastered

Answer: A

Explanation:

Principles

Fairness

Inclusiveness

Privacy and securit

Reliability and safe

Answer Area

Reliability and safe

Privacy and securit

AI systems must consistently operate as intended, even under unexpected conditions.

AI systems must protect and secure personal and businesses information.

NEW QUESTION 76

HOTSPOT - (Topic 5)

For each of the following statements, select Yes if the statement is true. Otherwise, select No.

NOTE; Each correct selection is worth one point.

Answer Area

Statements

Chatbots can only be built by using custom code.

The Azure Bot Service provides services that can be used to host conversational bots.

Bots built by using the Azure Bot Service can communicate with Microsoft Teams users.

Yes

No

- A. Mastered
- B. Not Mastered

Answer: A

Explanation:

Answer Area

Statements

Chatbots can only be built by using custom code.

Yes

☐

No

☒

The Azure Bot Service provides services that can be used to host conversational bots.

☒
☐

Bots built by using the Azure Bot Service can communicate with Microsoft Teams users.

☒
☐

NEW QUESTION 77

- (Topic 5)

You need to create a clustering model and evaluate the model by using Azure Machine Learning designer. What should you do?

- A. Split the original dataset into a dataset for features and a dataset for label
- B. Use the features dataset for evaluation.
- C. Split the original dataset into a dataset for training and a dataset for testin
- D. Use the training dataset for evaluation.
- E. Split the original dataset into a dataset for training and a dataset for testin
- F. Use the testing dataset for evaluation.
- G. Use the original dataset for training and evaluation.

Answer: C

NEW QUESTION 79

HOTSPOT - (Topic 5)

Select the answer that correctly completes the sentence.

Answer Area

A historian can use optical character recognition (OCR) to digitize newspaper articles.

facial analysis
 image classification
 object detection
 optical character recognition (OCR)

- A. Mastered
- B. Not Mastered

Answer: A

Explanation:

Answer Area

A historian can use optical character recognition (OCR) to digitize newspaper articles.

facial analysis
 image classification
 object detection
 optical character recognition (OCR)

NEW QUESTION 83

- (Topic 5)

Which statement is an example of a Microsoft responsible AI principle?

- A. AI systems must use only publicly available data.
- B. AI systems must protect the interests of the company
- C. AI systems must be understandable.
- D. AI systems must keep personal details public

Answer: C

NEW QUESTION 87

HOTSPOT - (Topic 5)

To complete the sentence, select the appropriate option in the answer area.

Answer Area

Returning a bounding box that indicates the location of a vehicle in an image is an example of

image classification.
object detection.
optical character recognition (OCR).
facial detection.

- A. Mastered
B. Not Mastered

Answer: A

Explanation:

Answer Area

Returning a bounding box that indicates the location of a vehicle in an image is an example of

image classification.
object detection.
optical character recognition (OCR).
facial detection.

NEW QUESTION 88

- (Topic 5)

You need to develop a chatbot for a website. The chatbot must answer users questions based on the information m the following documents

- A product troubleshooting guide m a Microsoft Word document
- A frequently asked questions (FAQ) list on a webpage Which service should you use to process the documents?

- A. Language Undemanding
B. Text Analytics
C. Azure Bot Service
D. QnA Maker

Answer: D

NEW QUESTION 93

HOTSPOT - (Topic 5)

To complete the sentence, select the appropriate option in the answer area.

Answer Area

An AI solution that helps photographers take better portrait photographs by providing feedback on exposure, noise, and occlusion is an example of facial

recognition.
analysis.
detection.
recognition.

- A. Mastered
B. Not Mastered

Answer: A

Explanation:

Answer Area

An AI solution that helps photographers take better portrait photographs by providing feedback on exposure, noise, and occlusion is an example of facial

recognition.
analysis.
detection.
recognition.

NEW QUESTION 95

- (Topic 5)

You have an Internet of Things (IoT) device that monitors engine temperature.

The device generates an alert if the engine temperature deviates from expected norms.

Which type of AI workload does the device represent?

- A. natural language processing (NLP)
B. computer vision
C. anomaly detection
D. knowledge mining

Answer: C

NEW QUESTION 100

- (Topic 5)

You are building a knowledge base by using QnA Maker. Which file format can you use to populate the knowledge base?

- A. PDF

- B. PPTX
- C. XML
- D. ZIP

Answer: A

Explanation:

Reference:
<https://docs.microsoft.com/en-us/azure/cognitive-services/qnamaker/concepts/data- sources-and-content>

NEW QUESTION 103

HOTSPOT - (Topic 5)

For each of the following statements. select Yes if the statement is true. Otherwise, select No. NOTE; Each correct selection is worth one point

Statements	Yes	No
The Custom Vision service can be used to detect objects in an image.		
The Custom Vision service requires that you provide your own data to train the model.		
The Custom Vision service can be used to analyze video files.		

- A. Mastered
- B. Not Mastered

Answer: A

Explanation:

Statements	Yes	No
The Custom Vision service can be used to detect objects in an image.	<input checked="" type="checkbox"/>	
The Custom Vision service requires that you provide your own data to train the model.	<input checked="" type="checkbox"/>	
The Custom Vision service can be used to analyze video files.		<input checked="" type="checkbox"/>

NEW QUESTION 106

HOTSPOT - (Topic 5)

HOTSPOT

For each of the following statements, select Yes if the statement is true. Otherwise, select No.
NOTE: Each correct selection is worth one point.

Statements	Yes	No
You can communicate with a bot by using email.	<input type="radio"/>	<input type="radio"/>
You can communicate with a bot by using Microsoft Teams.	<input type="radio"/>	<input type="radio"/>
You can communicate with a bot by using a webchat interface.	<input type="radio"/>	<input type="radio"/>

- A. Mastered
- B. Not Mastered

Answer: A

Explanation:

Statements	Yes	No
You can communicate with a bot by using email.	<input checked="" type="radio"/>	<input type="radio"/>
You can communicate with a bot by using Microsoft Teams.	<input checked="" type="radio"/>	<input type="radio"/>
You can communicate with a bot by using a webchat interface.	<input checked="" type="radio"/>	<input type="radio"/>

NEW QUESTION 108

- (Topic 5)

You have a webchat bot that provides responses from a QnA Maker knowledge base.

You need to ensure that the bot uses user feedback to improve the relevance of the responses over time.

What should you use?

- A. key phrase extraction
- B. sentiment analysis
- C. business logic
- D. active learning

Answer: D

Explanation:

Reference:

<https://docs.microsoft.com/en-us/azure/cognitive-services/qnamaker/how-to/improve-knowledge-base>

NEW QUESTION 109

FILL IN THE BLANK - (Topic 5)

To complete the sentence, select the appropriate option in the answer area.

Using Recency, Frequency, and Monetary (RFM) values to identify segments of a customer base is an example of _____

- A. Mastered
- B. Not Mastered

Answer: A

Explanation:

Using Recency, Frequency, and Monetary (RFM) values to identify segments of a customer base is an example of 

NEW QUESTION 114

- (Topic 5)

You need to provide content for a business chatbot that will help answer simple user queries.

What are three ways to create question and answer text by using QnA Maker? Each correct answer presents a complete solution.

NOTE: Each correct selection is worth one point.

- A. Generate the questions and answers from an existing webpage.
- B. Use automated machine learning to train a model based on a file that contains the questions.
- C. Manually enter the questions and answers.
- D. Connect the bot to the Cortana channel and ask questions by using Cortana.
- E. Import chat content from a predefined data source.

Answer: ACE

Explanation:

Automatic extraction

Extract question-answer pairs from semi-structured content, including FAQ pages, support websites, excel files, SharePoint documents, product manuals and policies.

Reference:

<https://docs.microsoft.com/en-us/azure/cognitive-services/qnamaker/concepts/content-types>

NEW QUESTION 115

HOTSPOT - (Topic 4)

To complete the sentence, select the appropriate option in the answer area.

Answer Area

Natural language processing can be used to

- ☐ classify email messages as work-related or personal.
- ☐ predict the number of future car rentals.
- ☐ predict which website visitors will make a transaction.
- ☐ stop a process in a factory when extremely high temperatures are registered.

- A. Mastered
- B. Not Mastered

Answer: A

Explanation:

Natural language processing (NLP) is used for tasks such as sentiment analysis, topic detection, language detection, key phrase extraction, and document categorization.

NEW QUESTION 116

- (Topic 4)

Which AI service can you use to interpret the meaning of a user input such as "Call me back later?"

- A. Translator Text
- B. Text Analytics
- C. Speech
- D. Language Understanding (LUIS)

Answer: D

Explanation:

<https://docs.microsoft.com/en-us/azure/cognitive-services/luis/what-is-luis>

NEW QUESTION 121

- (Topic 4)

You use natural language processing to process text from a Microsoft news story. You receive the output shown in the following exhibit.

For weeks now, students and teachers have been settling into the uncharted routine of distance learning. Today I want to thank all of the educators who are connecting classrooms and classmates together in the sudden shift to remote learning. This change requires everyone working together and is unlike anything we've seen in the modern history of education. We've seen countries, school districts and universities move rapidly into remote learning environments with Microsoft Teams being used in 175 countries by 183,000 institutions.



now [DateTime]
students [PersonType]
teachers [PersonType]
distance learning [Skill]
Today [DateTime-Date]
educators [PersonType]
classrooms [Location]
classmates [PersonType]
remote learning [Skill]
history [Skill]
education [Skill]
remote learning [Skill]
Microsoft [Organization]
175 [Quantity-Number]
183,000 [Quantity-Number]

Which type of natural languages processing was performed?

- A. entity recognition
- B. key phrase extraction
- C. sentiment analysis
- D. translation

Answer: A

Explanation:

<https://docs.microsoft.com/en-us/azure/cognitive-services/text-analytics/overview>

You can provide the Text Analytics service with unstructured text and it will return a list of entities in the text that it recognizes. You can provide the Text Analytics service with unstructured text and it will return a list of entities in the text that it recognizes. The service can also provide links to more information about that entity on the web. An entity is essentially an item of a particular type or a category; and in some cases, subtype, such as those as shown in the following table.

<https://docs.microsoft.com/en-us/learn/modules/analyze-text-with-text-analytics-service/2-get-started-azure>

NEW QUESTION 122

DRAG DROP - (Topic 4)

You plan to apply Text Analytics API features to a technical support ticketing system.

Match the Text Analytics API features to the appropriate natural language processing scenarios.

To answer, drag the appropriate feature from the column on the left to its scenario on the right. Each feature may be used once, more than once, or not at all.

NOTE: Each correct selection is worth one point.

API Features

Entity recognition

Key phrase extraction

Language detection

Sentiment analysis

Answer Area

API Feature

Understand how upset a customer is based on the text contained in the support ticket.

API Feature

Summarize important information from the support ticket.

API Feature

Extract key dates from the support ticket.

- A. Mastered
- B. Not Mastered

Answer: A

Explanation:

Box1: Sentiment analysis

Sentiment Analysis is the process of determining whether a piece of writing is positive, negative or neutral.

Box 2: Broad entity extraction

Broad entity extraction: Identify important concepts in text, including key

Key phrase extraction/ Broad entity extraction: Identify important concepts in text, including key phrases and named entities such as people, places, and organizations.

Box 3: Entity Recognition

Named Entity Recognition: Identify and categorize entities in your text as people, places, organizations, date/time, quantities, percentages, currencies, and more.

Well-known entities are also recognized and linked to more information on the web.

NEW QUESTION 127

- (Topic 4)

You plan to develop a bot that will enable users to query a knowledge base by using natural language processing.

Which two services should you include in the solution? Each correct answer presents part of the solution.

NOTE: Each correct selection is worth one point.

- A. Language Service
- B. Azure Bot Service
- C. Form Recognizer
- D. Anomaly Detector

Answer: AD

Explanation:

Reference:

<https://docs.microsoft.com/en-us/azure/bot-service/bot-service-overview-introduction?view=azure-bot-service-4.0>

<https://docs.microsoft.com/en-us/azure/cognitive-services/luis/choose-natural-language-processing-service>

NEW QUESTION 128

- (Topic 4)

You have insurance claim reports that are stored as text.

You need to extract key terms from the reports to generate summaries. Which type of AI workload should you use?

- A. conversational AI
- B. anomaly detection
- C. natural language processing
- D. computer vision

Answer: C

Explanation:

Key phrase extraction is the concept of evaluating the text of a document, or documents, and then identifying the main talking points of the document(s).

Key phase extraction is a part of Text Analytics. The Text Analytics service is a part of the Azure Cognitive Services offerings that can perform advanced natural language processing over raw text.

<https://docs.microsoft.com/en-us/learn/modules/analyze-text-with-text-analytics-service/2-get-started-azure>

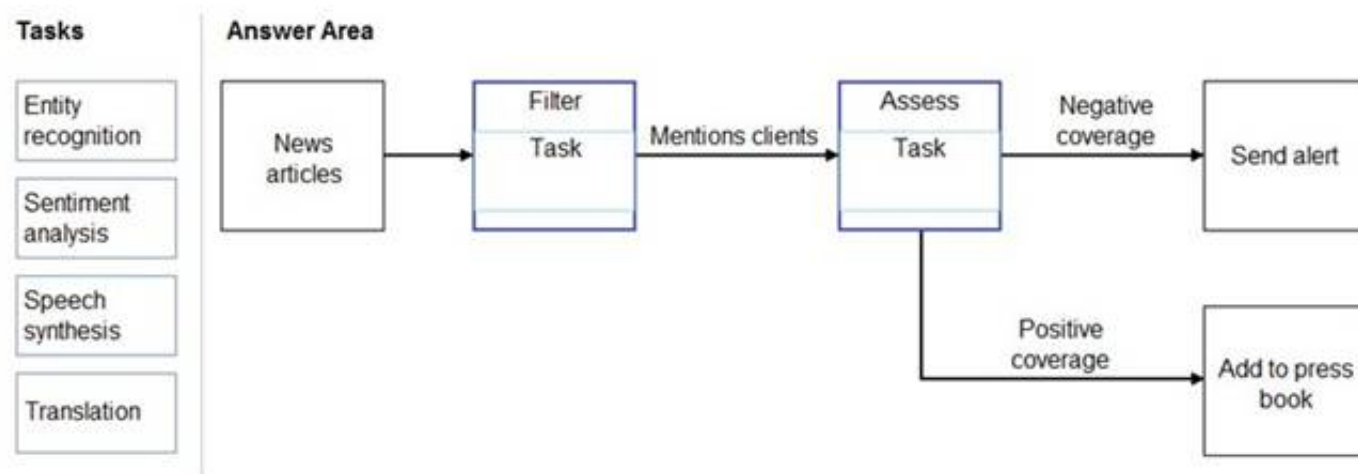
NEW QUESTION 130

DRAG DROP - (Topic 4)

You need to scan the news for articles about your customers and alert employees when there is a negative article. Positive articles must be added to a press book.

Which natural language processing tasks should you use to complete the process? To answer, drag the appropriate tasks to the correct locations. Each task may be used once, more than once, or not at all. You may need to drag the split bar between panes or scroll to view content.

NOTE: Each correct selection is worth one point.



- A. Mastered
- B. Not Mastered

Answer: A

Explanation:

Box 1: Entity recognition

the Named Entity Recognition module in Machine Learning Studio (classic), to identify the names of things, such as people, companies, or locations in a column of text.

Named entity recognition is an important area of research in machine learning and natural language processing (NLP), because it can be used to answer many real-world questions, such as:

? Which companies were mentioned in a news article?

? Does a tweet contain the name of a person? Does the tweet also provide his current location?

? Were specified products mentioned in complaints or reviews?

Box 2: Sentiment Analysis

The Text Analytics API's Sentiment Analysis feature provides two ways for detecting positive and negative sentiment. If you send a Sentiment Analysis request, the API will return sentiment labels (such as "negative", "neutral" and "positive") and confidence scores at the sentence and document-level.

NEW QUESTION 133

- (Topic 3)

You need to build an image tagging solution for social media that tags images of your friends automatically. Which Azure Cognitive Services service should you use?

- A. Computer Vision
- B. Face
- C. Text Analytics
- D. Form Recognizer

Answer: B

NEW QUESTION 136

HOTSPOT - (Topic 3)

For each of the following statements, select Yes if the statement is true. Otherwise, select No.

NOTE: Each correct selection is worth one point.

Answer Area

Statements	Yes	No
When creating an object detection model in the Custom Vision service, you must choose a classification type of either Multilabel or Multiclass .	<input type="radio"/>	<input type="radio"/>
You can create an object detection model in the Custom Vision service to find the location of content within an image.	<input type="radio"/>	<input type="radio"/>
When creating an object detection model in the Custom Vision service, you can select from a set of predefined domains.	<input type="radio"/>	<input type="radio"/>

- A. Mastered
- B. Not Mastered

Answer: A

Explanation:

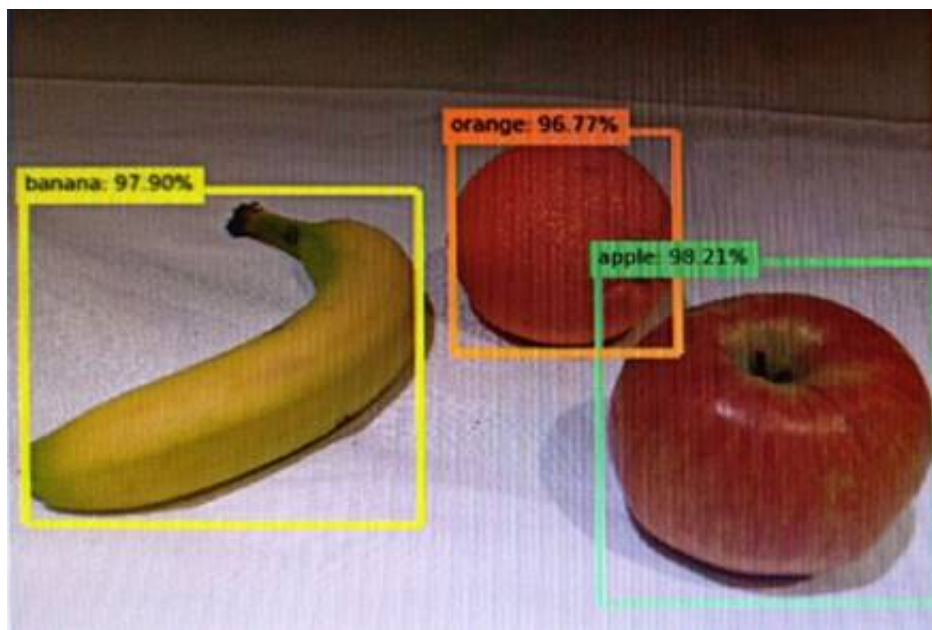
Answer Area

Statements	Yes	No
When creating an object detection model in the Custom Vision service, you must choose a classification type of either Multilabel or Multiclass .	<input type="radio"/>	<input checked="" type="radio"/>
You can create an object detection model in the Custom Vision service to find the location of content within an image.	<input checked="" type="radio"/>	<input type="radio"/>
When creating an object detection model in the Custom Vision service, you can select from a set of predefined domains.	<input checked="" type="radio"/>	<input type="radio"/>

NEW QUESTION 137

- (Topic 3)

You send an image to a Computer Vision API and receive back the annotated image shown in the exhibit.



Which type of computer vision was used?

- A. object detection
- B. semantic segmentation
- C. optical character recognition (OCR)
- D. image classification

Answer: A

Explanation:

Object detection is similar to tagging, but the API returns the bounding box coordinates (in pixels) for each object found. For example, if an image contains a dog, cat and person, the Detect operation will list those objects together with their coordinates in the image. You can use this functionality to process the relationships between the objects in an image. It also lets you determine whether there are multiple instances of the same tag in an image.

The Detect API applies tags based on the objects or living things identified in the image. There is currently no formal relationship between the tagging taxonomy and the object detection taxonomy. At a conceptual level, the Detect API only finds objects and living things, while the Tag API can also include contextual terms like "indoor", which can't be localized with bounding boxes.

Reference:

<https://docs.microsoft.com/en-us/azure/cognitive-services/computer-vision/concept-object-detection>

NEW QUESTION 142

- (Topic 3)

In which two scenarios can you use the Form Recognizer service? Each correct answer presents a complete solution.

NOTE: Each correct selection is worth one point.

- A. Extract the invoice number from an invoice.
- B. Translate a form from French to English.
- C. Find image of product in a catalog.
- D. Identity the retailer from a receipt.

Answer: AD

Explanation:

Reference:

<https://azure.microsoft.com/en-gb/services/cognitive-services/form-recognizer/#features>

NEW QUESTION 147

- (Topic 3)

You need to develop a mobile app for employees to scan and store their expenses while travelling.

Which type of computer vision should you use?

- A. semantic segmentation
- B. image classification
- C. object detection
- D. optical character recognition (OCR)

Answer: D

Explanation:

Azure's Computer Vision API includes Optical Character Recognition (OCR) capabilities that extract printed or handwritten text from images. You can extract text from images, such as photos of license plates or containers with serial numbers, as well as from documents - invoices, bills, financial reports, articles, and more.

Reference:

<https://docs.microsoft.com/en-us/azure/cognitive-services/computer-vision/concept-recognizing-text>

NEW QUESTION 152

DRAG DROP - (Topic 3)

Match the facial recognition tasks to the appropriate questions.

To answer, drag the appropriate task from the column on the left to its question on the right. Each task may be used once, more than once, or not at all.

NOTE: Each correct selection is worth one point.

Tasks	Answer Area
<input type="text" value="grouping"/>	<input type="text" value="Task"/> Do two images of a face belong to the same person?
<input type="text" value="identification"/>	<input type="text" value="Task"/> Does this person look like other people?
<input type="text" value="similarity"/>	<input type="text" value="Task"/> Do all the faces belong together?
<input type="text" value="verification"/>	<input type="text" value="Task"/> Who is this person in this group of people?

- A. Mastered
- B. Not Mastered

Answer: A

Explanation:

Box 1: verification
Face verification: Check the likelihood that two faces belong to the same person and receive a confidence score.
Box 2: similarity
Box 3: Grouping
Box 4: identification
Face detection: Detect one or more human faces along with attributes such as: age, emotion, pose, smile, and facial hair, including 27 landmarks for each face in the image.

NEW QUESTION 156

- (Topic 2)
You are building a tool that will process images from retail stores and identify the products of competitors.
The solution will use a custom model.
Which Azure Cognitive Services service should you use?

- A. Custom Vision
- B. Form Recognizer
- C. Face
- D. Computer Vision

Answer: A

Explanation:

Reference:
<https://docs.microsoft.com/en-us/azure/cognitive-services/custom-vision-service/overview>

NEW QUESTION 159

- (Topic 3)
What are two tasks that can be performed by using computer vision? Each correct answer presents a complete solution.
NOTE: Each correct selection is worth one point.

- A. Predict stock prices.
- B. Detect brands in an image.
- C. Detect the color scheme in an image
- D. Translate text between languages.
- E. Extract key phrases.

Answer: BC

NEW QUESTION 161

DRAG DROP - (Topic 2)
Match the machine learning tasks to the appropriate scenarios.
To answer, drag the appropriate task from the column on the left to its scenario on the right. Each task may be used once, more than once, or not at all.
NOTE: Each correct selection is worth one point.

Learning Types	Answer Area
<input type="text" value="Feature engineering"/>	<input type="text" value="Task"/> Examining the values of a confusion matrix
<input type="text" value="Feature selection"/>	<input type="text" value="Task"/> Splitting a date into month, day, and year fields
<input type="text" value="Model deployment"/>	<input type="text" value="Task"/> Picking temperature and pressure to train a weather model
<input type="text" value="Model evaluation"/>	
<input type="text" value="Model training"/>	

- A. Mastered

B. Not Mastered

Answer: A

Explanation:

Box 1: Model evaluation

The Model evaluation module outputs a confusion matrix showing the number of true positives, false negatives, false positives, and true negatives, as well as ROC, Precision/Recall, and Lift curves.

Box 2: Feature engineering

Feature engineering is the process of using domain knowledge of the data to create features that help ML algorithms learn better. In Azure Machine Learning, scaling and normalization techniques are applied to facilitate feature engineering. Collectively, these techniques and feature engineering are referred to as featurization.

Note: Often, features are created from raw data through a process of feature engineering. For example, a time stamp in itself might not be useful for modeling until the information is transformed into units of days, months, or categories that are relevant to the problem, such as holiday versus working day.

Box 3: Feature selection

In machine learning and statistics, feature selection is the process of selecting a subset of relevant, useful features to use in building an analytical model. Feature selection helps narrow the field of data to the most valuable inputs. Narrowing the field of data helps reduce noise and improve training performance.

NEW QUESTION 164

HOTSPOT - (Topic 2)

To complete the sentence, select the appropriate option in the answer area.

▼

Accuracy

Confidence

Root Mean Square Error

Sentiment

is the calculated probability of a correct image classification.

A. Mastered

B. Not Mastered

Answer: A

Explanation:

▼

Accuracy

Confidence

Root Mean Square Error

Sentiment

is the calculated probability of a correct image classification.

NEW QUESTION 169

HOTSPOT - (Topic 2)

To complete the sentence, select the appropriate option in the answer area.

Answer Area

The ability to extract subtotals and totals from a receipt is a capability of the

▼

 service.

Custom Vision

Form Recognizer

Ink Recognizer

Text Analytics

A. Mastered

B. Not Mastered

Answer: A

Explanation:

Accelerate your business processes by automating information extraction. Form Recognizer applies advanced machine learning to accurately extract text, key/value pairs, and tables from documents. With just a few samples, Form Recognizer tailors its understanding to your documents, both on-premises and in the cloud. Turn forms into usable data at a fraction of the time and cost, so you can focus more time acting on the information rather than compiling it.

NEW QUESTION 171

HOTSPOT - (Topic 2)

To complete the sentence, select the appropriate option in the answer area.

Predicting how many vehicles will travel across a bridge on a given day is an example of

▼

classification.
clustering.
regression.

- A. Mastered
- B. Not Mastered

Answer: A

Explanation:

Regression is a machine learning task that is used to predict the value of the label from a set of related features.

NEW QUESTION 172

HOTSPOT - (Topic 2)

To complete the sentence, select the appropriate option in the answer area.

▼

Classification
Clustering
Regression

models can be used to predict the sale price of auctioned items.

- A. Mastered
- B. Not Mastered

Answer: A

Explanation:

Regression is a machine learning task that is used to predict the value of the label from a set of related features.

NEW QUESTION 177

- (Topic 2)

Which two components can you drag onto a canvas in Azure Machine Learning designer? Each correct answer presents a complete solution.

NOTE: Each correct selection is worth one point.

- A. dataset
- B. compute
- C. pipeline
- D. module

Answer: AD

Explanation:

You can drag-and-drop datasets and modules onto the canvas. Reference:

<https://docs.microsoft.com/en-us/azure/machine-learning/concept-designer>

NEW QUESTION 179

- (Topic 2)

You use Azure Machine Learning designer to publish an inference pipeline.

Which two parameters should you use to consume the pipeline? Each correct answer presents part of the solution.

NOTE: Each correct selection is worth one point.

- A. the model name
- B. the training endpoint
- C. the authentication key
- D. the REST endpoint

Answer: CD

Explanation:

<https://docs.microsoft.com/en-in/learn/modules/create-regression-model-azure-machine-learning-designer/deploy-service>

NEW QUESTION 180

- (Topic 2)

Which metric can you use to evaluate a classification model?

- A. true positive rate
- B. mean absolute error (MAE)

- C. coefficient of determination (R2)
- D. root mean squared error (RMSE)

Answer: A

Explanation:

What does a good model look like?
An ROC curve that approaches the top left corner with 100% true positive rate and 0% false positive rate will be the best model. A random model would display as a flat line from the bottom left to the top right corner. Worse than random would dip below the y=x line.
Reference:
<https://docs.microsoft.com/en-us/azure/machine-learning/how-to-understand-automated-ml#classification>

NEW QUESTION 185

- (Topic 2)
You are evaluating whether to use a basic workspace or an enterprise workspace in Azure Machine Learning.
What are two tasks that require an enterprise workspace? Each correct answer presents a complete solution.
NOTE: Each correct selection is worth one point.

- A. Use a graphical user interface (GUI) to run automated machine learning experiments.
- B. Create a compute instance to use as a workstation.
- C. Use a graphical user interface (GUI) to define and run machine learning experiments from Azure Machine Learning designer.
- D. Create a dataset from a comma-separated value (CSV) file.

Answer: AC

Explanation:

Note: Enterprise workspaces are no longer available as of September 2020. The basic workspace now has all the functionality of the enterprise workspace.
Reference:
<https://www.azure.cn/en-us/pricing/details/machine-learning/> <https://docs.microsoft.com/en-us/azure/machine-learning/concept-workspace>

NEW QUESTION 187

HOTSPOT - (Topic 2)
For each of the following statements, select Yes if the statement is true. Otherwise, select No.
NOTE: Each correct selection is worth one point.

Answer Area

Statements	Yes	No
Azure Machine Learning designer provides a drag-and-drop visual canvas to build, test, and deploy machine learning models.	<input type="radio"/>	<input type="radio"/>
Azure Machine Learning designer enables you to save your progress as a pipeline draft.	<input type="radio"/>	<input type="radio"/>
Azure Machine Learning designer enables you to include custom JavaScript functions.	<input type="radio"/>	<input type="radio"/>

- A. Mastered
- B. Not Mastered

Answer: A

Explanation:

Box 1: Yes
Azure Machine Learning designer lets you visually connect datasets and modules on an interactive canvas to create machine learning models.
Box 2: Yes
With the designer you can connect the modules to create a pipeline draft.
As you edit a pipeline in the designer, your progress is saved as a pipeline draft. Box 3: No

NEW QUESTION 189

DRAG DROP - (Topic 2)
Match the types of machine learning to the appropriate scenarios.
To answer, drag the appropriate machine learning type from the column on the left to its scenario on the right. Each machine learning type may be used once, more than once, or not at all.
NOTE: Each correct selection is worth one point.

Learning Types

Classification

Clustering

Regression

Answer Area

Learning Type

Predict how many minutes late a flight will arrive basen on the amount of snowfall at an airpoint.

Learning Type

Segment customers into different groups to support a marketing department.

Learning Type

Predict whether a student will complete a university course.

- A. Mastered
B. Not Mastered

Answer: A

Explanation:

- 1- Regression
2- Clustering
3- Classification

NEW QUESTION 194

HOTSPOT - (Topic 2)

For each of the following statements, select Yes if the statement is true. Otherwise, select No.

NOTE: Each correct selection is worth one point.

Answer Area

Statements	Yes	No
Automated machine learning is the process of automating the time-consuming, iterative tasks of machine learning model development.	<input type="radio"/>	<input type="radio"/>
Automated machine learning can automatically infer the training data from the use case provided.	<input type="radio"/>	<input type="radio"/>
Automated machine learning works by running multiple training iterations that are scored and ranked by the metrics you specify.	<input type="radio"/>	<input type="radio"/>
Automated machine learning enables you to specify a dataset and will automatically understand which label to predict.	<input type="radio"/>	<input type="radio"/>

- A. Mastered
B. Not Mastered

Answer: A

Explanation:

Box 1: Yes

Automated machine learning, also referred to as automated ML or AutoML, is the process of automating the time consuming, iterative tasks of machine learning model development. It allows data scientists, analysts, and developers to build ML models with high scale, efficiency, and productivity all while sustaining model quality.

Box 2: No

Box 3: Yes

During training, Azure Machine Learning creates a number of pipelines in parallel that try different algorithms and parameters for you. The service iterates through ML algorithms paired with feature selections, where each iteration produces a model with a training score. The higher the score, the better the model is considered to "fit" your data. It will stop once it hits the exit criteria defined in the experiment.

Box 4: No

Apply automated ML when you want Azure Machine Learning to train and tune a model for you using the target metric you specify.

The label is the column you want to predict.

NEW QUESTION 198

- (Topic 2)

When training a model, why should you randomly split the rows into separate subsets?

- A. to train the model twice to attain better accuracy
B. to train multiple models simultaneously to attain better performance
C. to test the model by using data that was not used to train the model

Answer: C

Explanation:

The goal is to produce a trained (fitted) model that generalizes well to new, unknown data. The fitted model is evaluated using "new" examples from the held-out datasets (validation and test datasets) to estimate the model's accuracy in classifying new data.

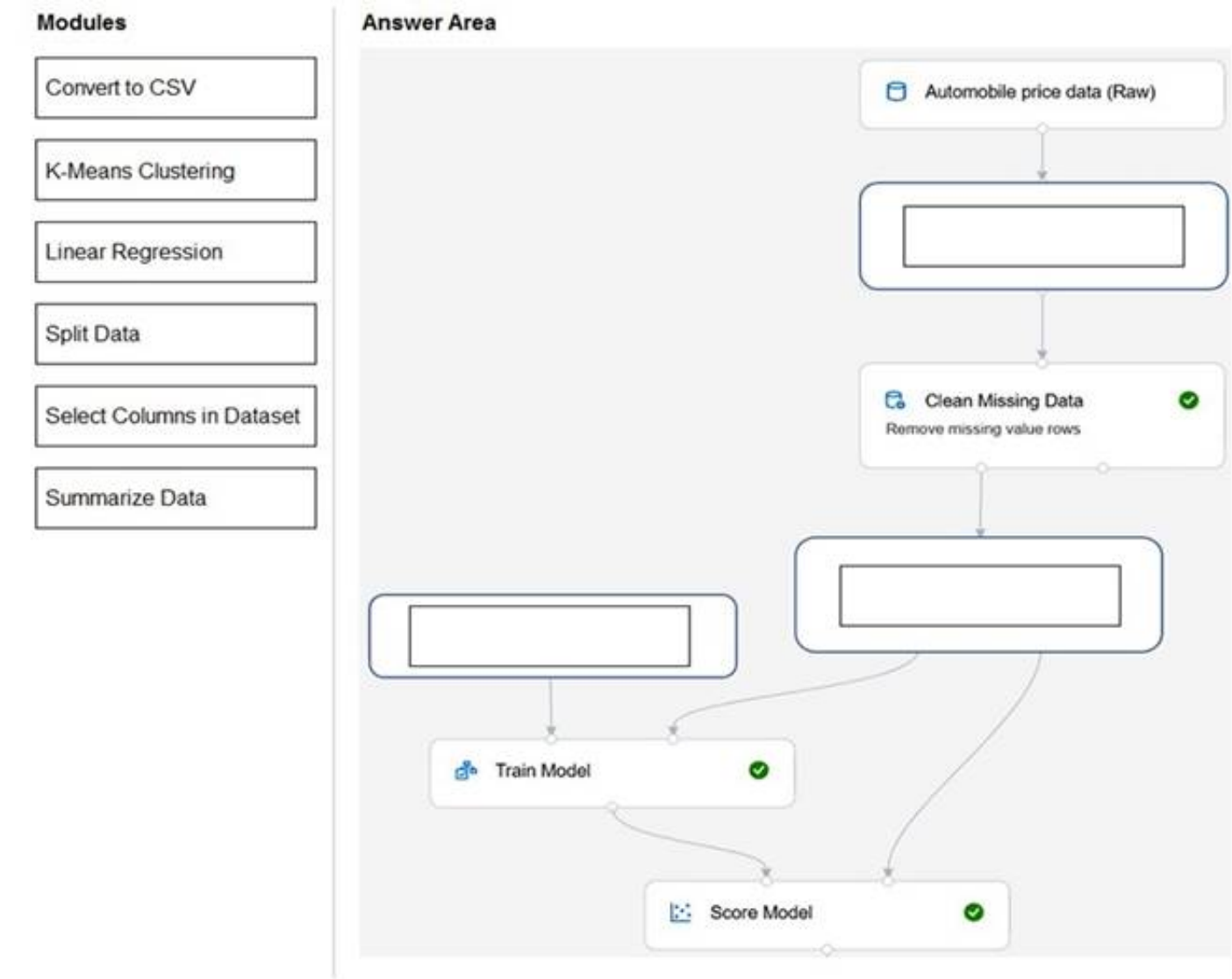
https://en.wikipedia.org/wiki/Training,_validation,_and_test_sets#:~:text=Training%20datas et,-

A%20training%20dataset&text=The%20goal%20is%20to%20produce,accuracy%20in%20classifying%20new%20data.

NEW QUESTION 202

DRAG DROP - (Topic 2)

You need to use Azure Machine Learning designer to build a model that will predict automobile prices. Which type of modules should you use to complete the model? To answer, drag the appropriate modules to the correct locations. Each module may be used once, more than once, or not at all. You may need to drag the split bar between panes or scroll to view content. NOTE: Each correct selection is worth one point.

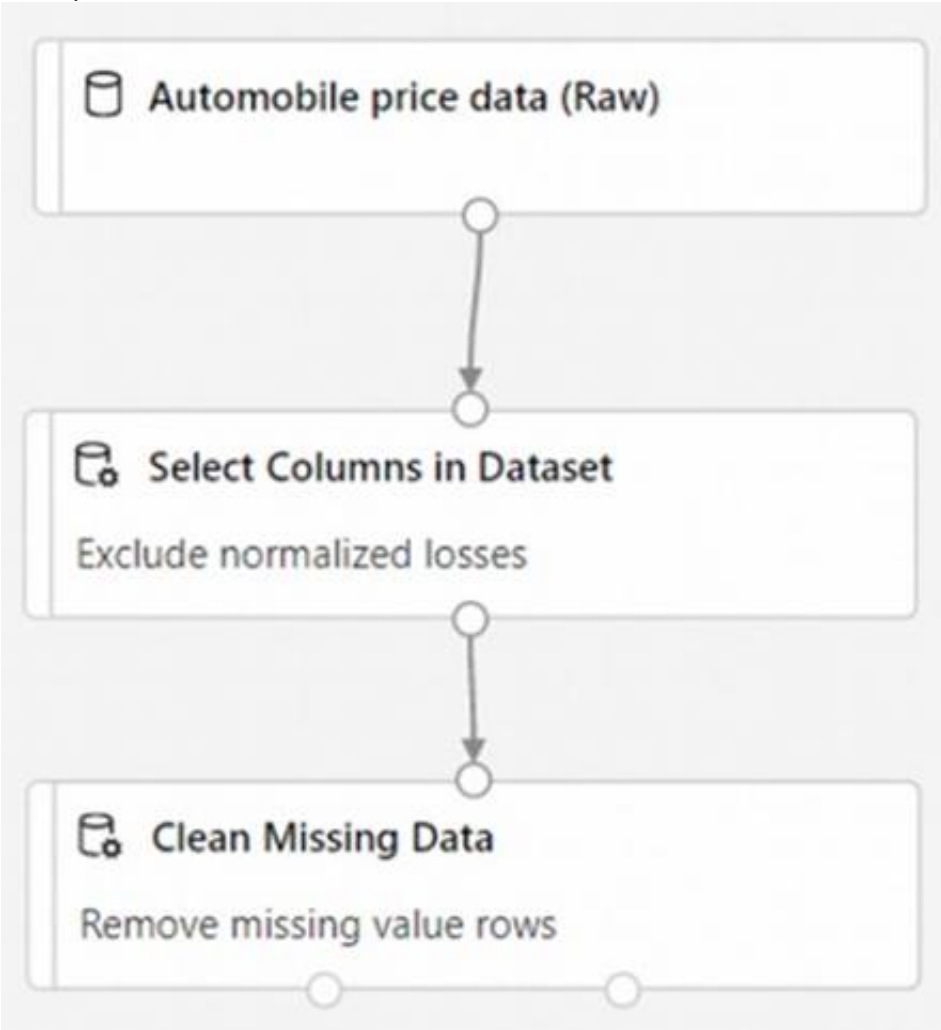


- A. Mastered
- B. Not Mastered

Answer: A

Explanation:

Box 1: Select Columns in Dataset
For Columns to be cleaned, choose the columns that contain the missing values you want to change. You can choose multiple columns, but you must use the same replacement method in all selected columns.
Example:



Box 2: Split data
Splitting data is a common task in machine learning. You will split your data into two separate datasets. One dataset will train the model and the other will test how well the model performed.

Box 3: Linear regression
Because you want to predict price, which is a number, you can use a regression algorithm. For this example, you use a linear regression model.

NEW QUESTION 207

- (Topic 1)
For a machine learning progress, how should you split data for training and evaluation?

- A. Use features for training and labels for evaluation.
- B. Randomly split the data into rows for training and rows for evaluation.
- C. Use labels for training and features for evaluation.
- D. Randomly split the data into columns for training and columns for evaluation.

Answer: B

Explanation:
<https://docs.microsoft.com/en-us/azure/machine-learning/algorithm-module-reference/split-data>

NEW QUESTION 209

HOTSPOT - (Topic 1)
For each of the following statements, select Yes if the statement is true. Otherwise, select No.
NOTE: Each correct selection is worth one point.

Statements	Yes	No
Providing an explanation of the outcome of a credit loan application is an example of the Microsoft transparency principle for responsible AI.	<input type="radio"/>	<input type="radio"/>
A triage bot that prioritizes insurance claims based on injuries is an example of the Microsoft reliability and safety principle for responsible AI.	<input type="radio"/>	<input type="radio"/>
An AI solution that is offered at different prices for different sales territories is an example of the Microsoft inclusiveness principle for responsible AI.	<input type="radio"/>	<input type="radio"/>

- A. Mastered
- B. Not Mastered

Answer: A

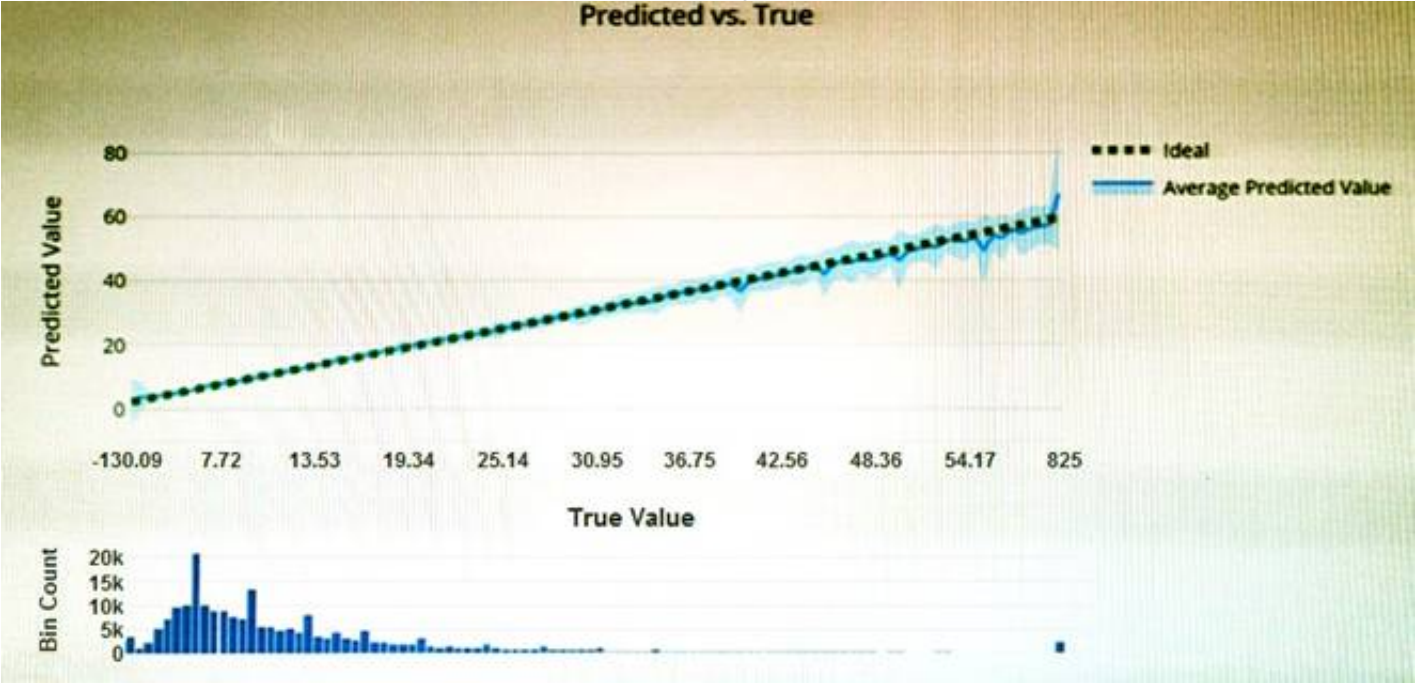
Explanation:
Box 1: Yes
Achieving transparency helps the team to understand the data and algorithms used to train the model, what transformation logic was applied to the data, the final model generated, and its associated assets. This information offers insights about how the model was created, which allows it to be reproduced in a transparent way.

Box 2: No
A data holder is obligated to protect the data in an AI system, and privacy and security are an integral part of this system. Personal needs to be secured, and it should be accessed in a way that doesn't compromise an individual's privacy.

Box 3: No
Inclusiveness mandates that AI should consider all human races and experiences, and inclusive design practices can help developers to understand and address potential barriers that could unintentionally exclude people. Where possible, speech-to-text, text-to- speech, and visual recognition technology should be used to empower people with hearing, visual, and other impairments.

NEW QUESTION 212

- (Topic 2)
You have the Predicted vs. True chart shown in the following exhibit.



Which type of model is the chart used to evaluate?

- A. classification
- B. regression
- C. clustering

Answer: B

Explanation:

What is a Predicted vs. True chart?
Predicted vs. True shows the relationship between a predicted value and its correlating true value for a regression problem. This graph can be used to measure performance of a model as the closer to the y=x line the predicted values are, the better the accuracy of a predictive model.
Reference:
<https://docs.microsoft.com/en-us/azure/machine-learning/how-to-understand-automated-m>

NEW QUESTION 214

- (Topic 1)
You build a machine learning model by using the automated machine learning user interface (UI).
You need to ensure that the model meets the Microsoft transparency principle for responsible AI.
What should you do?

- A. Set Validation type to Auto.
- B. Enable Explain best model.
- C. Set Primary metric to accuracy.
- D. Set Max concurrent iterations to 0.

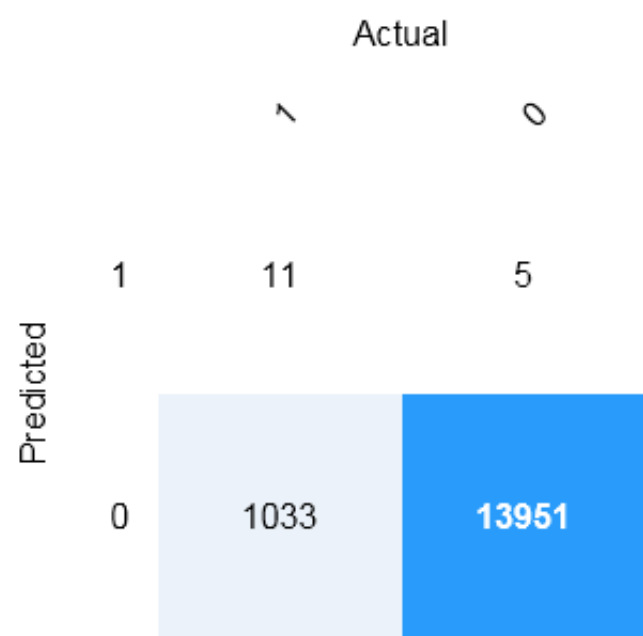
Answer: B

Explanation:

Model Explain Ability.
Most businesses run on trust and being able to open the ML “black box” helps build transparency and trust. In heavily regulated industries like healthcare and banking, it is critical to comply with regulations and best practices. One key aspect of this is understanding the relationship between input variables (features) and model output. Knowing both the magnitude and direction of the impact each feature (feature importance) has on the predicted value helps better understand and explain the model. With model explain ability, we enable you to understand feature importance as part of automated ML runs.
Reference:
<https://azure.microsoft.com/en-us/blog/new-automated-machine-learning-capabilities-in-azure-machine-learning-service/>

NEW QUESTION 216

HOTSPOT - (Topic 1)
You are developing a model to predict events by using classification.
You have a confusion matrix for the model scored on test data as shown in the following exhibit.



Use the drop-down menus to select the answer choice that completes each statement based on the information presented in the graphic.
NOTE: Each correct selection is worth one point.

Answer Area

There are [answer choice] correctly predicted positives.

5

11

1,033

13,951

There are [answer choice] false negatives.

5

11

1,033

13,951

- A. Mastered
- B. Not Mastered

Answer: A

Explanation:
Box 1: 11

	Predicted	
	Positive	Negative
Actual True	TP	FN
Actual False	FP	TN

TP = True Positive.
The class labels in the training set can take on only two possible values, which we usually refer to as positive or negative. The positive and negative instances that a classifier predicts correctly are called true positives (TP) and true negatives (TN), respectively. Similarly, the incorrectly classified instances are called false positives (FP) and false negatives (FN).
Box 2: 1,033
FN = False Negative

NEW QUESTION 220

DRAG DROP - (Topic 1)
Match the Microsoft guiding principles for responsible AI to the appropriate descriptions.
To answer, drag the appropriate principle from the column on the left to its description on the right. Each principle may be used once, more than once, or not at all.
NOTE: Each correct selection is worth one point.

Principles

Accountability

Fairness

Inclusiveness

Privacy and security

Reliability and safety

Answer Area

Principle

Ensure that AI systems operate as they were originally designed, respond to unanticipated conditions, and resist harmful manipulation.

Principle

Implementing processes to ensure that decisions made by AI systems can be overridden by humans.

Principle

Provide consumers with information and controls over the collection, use, and storage of their data.

- A. Mastered
- B. Not Mastered

Answer: A

Explanation:
Box 1: Reliability and safety
To build trust, it's critical that AI systems operate reliably, safely, and consistently under normal circumstances and in unexpected conditions. These systems should be able to operate as they were originally designed, respond safely to unanticipated conditions, and resist harmful manipulation.
Box 2: accountability
Box 3: Privacy and security
As AI becomes more prevalent, protecting privacy and securing important personal and business information is becoming more critical and complex. With AI,

privacy and data security issues require especially close attention because access to data is essential for AI systems to make accurate and informed predictions and decisions about people. AI systems must comply with privacy laws that require transparency about the collection, use, and storage of data and mandate that consumers have appropriate controls to choose how their data is used
<https://docs.microsoft.com/en-us/learn/modules/responsible-ai-principles/4-guiding-principles>

NEW QUESTION 223

- (Topic 1)

What are three Microsoft guiding principles for responsible AI? Each correct answer presents a complete solution.

NOTE: Each correct selection is worth one point.

- A. knowledgeability
- B. decisiveness
- C. inclusiveness
- D. fairness
- E. opinionatedness
- F. reliability and safety

Answer: CDF

Explanation:

Reference:

<https://docs.microsoft.com/en-us/learn/modules/responsible-ai-principles/4-guiding-principles>

NEW QUESTION 228

HOTSPOT - (Topic 1)

To complete the sentence, select the appropriate option in the answer area.

According to Microsoft's

	▼
accountability	
fairness	
inclusiveness	
transparency	

 principle of responsible AI,

AI systems should **NOT** reflect biases from the data sets that are used to train the systems.

- A. Mastered
- B. Not Mastered

Answer: A

Explanation:

According to Microsoft's

	▼
accountability	
fairness	
inclusiveness	
transparency	

 principle of responsible AI,

AI systems should **NOT** reflect biases from the data sets that are used to train the systems.

NEW QUESTION 230

HOTSPOT - (Topic 1)

To complete the sentence, select the appropriate option in the answer area.

When developing an AI system for self-driving cars, the Microsoft

	▼
inclusiveness	
accountability	
reliability and safety	
fairness	

 principle of the

for responsible AI should be applied to ensure consistent operation system during unexpected circumstances.

- A. Mastered
- B. Not Mastered

Answer: A

Explanation:

Reliability and safety: To build trust, it's critical that AI systems operate reliably, safely, and consistently under normal circumstances and in unexpected conditions. These systems should be able to operate as they were originally designed, respond safely to unanticipated conditions, and resist harmful manipulation.

NEW QUESTION 231

- (Topic 1)

You are building an AI system.

Which task should you include to ensure that the service meets the Microsoft transparency principle for responsible AI?

- A. Ensure that all visuals have an associated text that can be read by a screen reader.
- B. Enable autoscaling to ensure that a service scales based on demand.
- C. Provide documentation to help developers debug code.
- D. Ensure that a training dataset is representative of the population.

Answer: C

Explanation:

Reference:

<https://docs.microsoft.com/en-us/learn/modules/responsible-ai-principles/4-guiding-principles>

NEW QUESTION 234

- (Topic 1)

You are building an AI-based app.

You need to ensure that the app uses the principles for responsible AI.

Which two principles should you follow? Each correct answer presents part of the solution.

NOTE: Each correct selection is worth one point.

- A. Implement an Agile software development methodology
- B. Implement a process of AI model validation as part of the software review process
- C. Establish a risk governance committee that includes members of the legal team, members of the risk management team, and a privacy officer
- D. Prevent the disclosure of the use of AI-based algorithms for automated decision making

Answer: BC

Explanation:

Reference:

<https://docs.microsoft.com/en-us/azure/cloud-adoption-framework/innovate/best-practices/trusted-ai>

<https://docs.microsoft.com/en-us/learn/modules/responsible-ai-principles/3-implications-responsible-ai-practical>

NEW QUESTION 238

.....

Thank You for Trying Our Product

We offer two products:

1st - We have Practice Tests Software with Actual Exam Questions

2nd - Questions and Answers in PDF Format

AI-900 Practice Exam Features:

- * AI-900 Questions and Answers Updated Frequently
- * AI-900 Practice Questions Verified by Expert Senior Certified Staff
- * AI-900 Most Realistic Questions that Guarantee you a Pass on Your First Try
- * AI-900 Practice Test Questions in Multiple Choice Formats and Updates for 1 Year

100% Actual & Verified — Instant Download, Please Click
[Order The AI-900 Practice Test Here](#)