



Microsoft

Exam Questions PL-500

Microsoft Power Automate RPA Developer

NEW QUESTION 1

- (Exam Topic 1)

You need to ensure that the solution uses the correct accounts payable mailbox. Which three actions should you perform? Each correct answer part of the solution, NOTE: Each correct selection is worth one point.

- A. Set the current value for the accounts payable mailbox in the environment.
- B. Set the default value for the accounts payable mailbox in the environment.
- C. Turn off and then turn on the cloud flows.
- D. Use separate environment variables for the cloud flow and the canvas app.
- E. Use one environment variable for both the cloud flows and the canvas app.

Answer: ACD

NEW QUESTION 2

- (Exam Topic 1)

You need to configure permissions for the Purchase order quantity flow. Which permission should you assign?

- A. Co-owner
- B. Run-only user
- C. Owner
- D. User

Answer: D

NEW QUESTION 3

- (Exam Topic 1)

You need to resolve the fulfillment status flow issue.

Which three actions should you perform? Each correct answer presents part of the solution. NOTE: Each correct selection is worth one point.

- A. Ensure that the flow instance does not remain in the queue for more than three hours.
- B. Ensure that the flow is not using elevated privileges.
- C. Ensure that all users are signed out from the target machine.
- D. Use different local Windows accounts for all machines.
- E. Trigger the flow by using an on-premises data gateway.

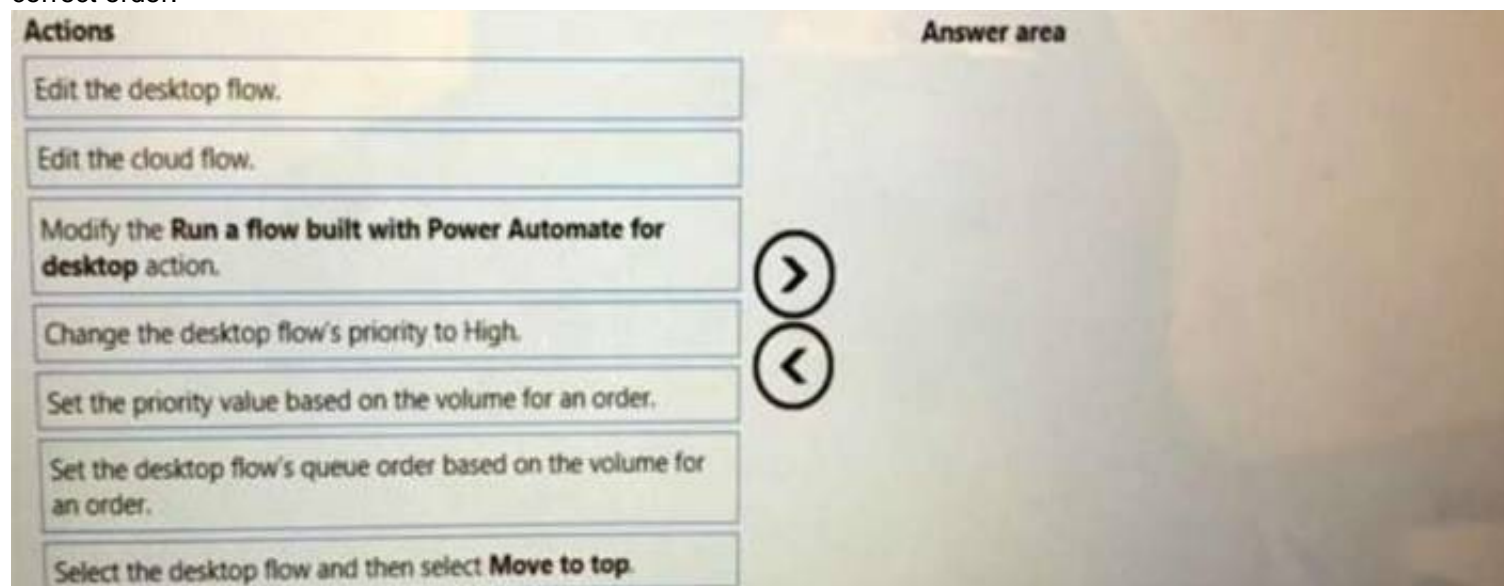
Answer: BDE

NEW QUESTION 4

- (Exam Topic 1)

You need to implement a solution to manage the priority of incoming orders.

Which three actions should you perform in sequence? To answer, move the appropriate actions from the list of actions to the answer area and arrange them in the correct order.

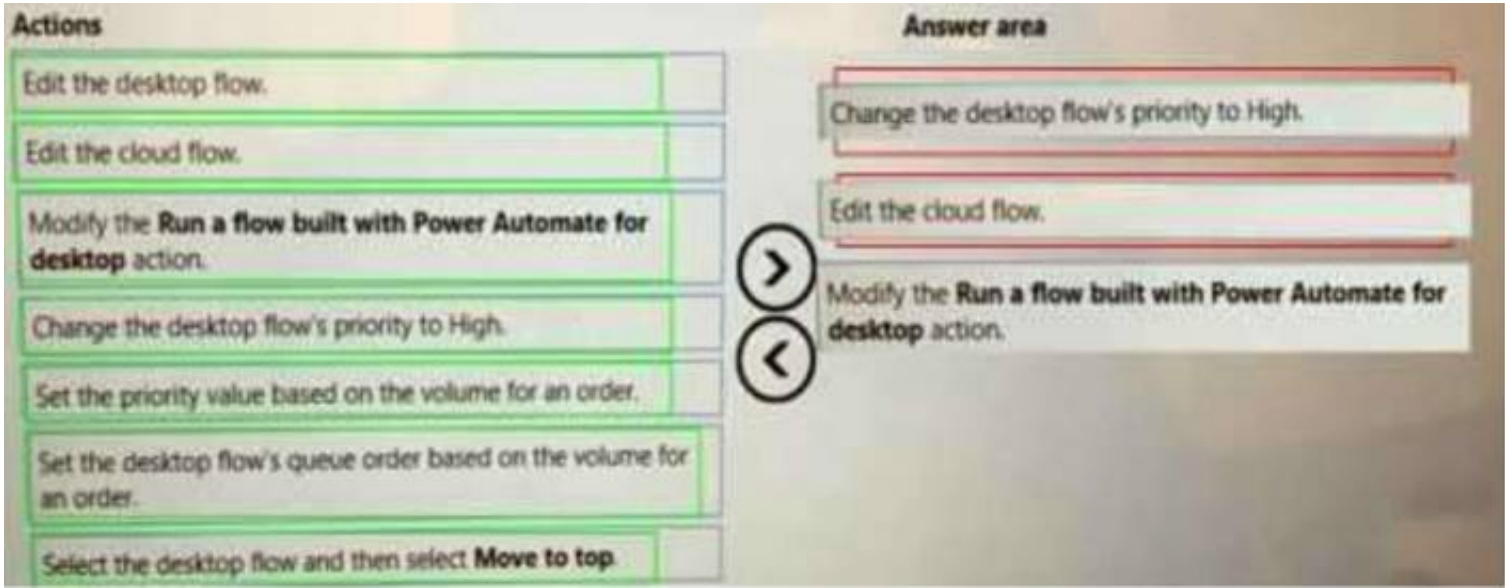


The screenshot shows the Power Automate interface. On the left, under the 'Actions' tab, there is a list of actions: 'Edit the desktop flow.', 'Edit the cloud flow.', 'Modify the Run a flow built with Power Automate for desktop action.', 'Change the desktop flow's priority to High.', 'Set the priority value based on the volume for an order.', 'Set the desktop flow's queue order based on the volume for an order.', and 'Select the desktop flow and then select Move to top.'. On the right, there is an 'Answer area' which is currently empty. Between the list of actions and the answer area, there are two circular arrows, one pointing right and one pointing left, indicating that the actions can be moved to the answer area and rearranged.

- A. Mastered
- B. Not Mastered

Answer: A

Explanation:



NEW QUESTION 5

- (Exam Topic 2)

You need to configure the desktop action for the MaintenanceScheduler cloud flow. Which two actions should you perform? Each correct answer presents part of the solution. NOTE: Each correct selection is worth one point.

- A. Select machine settings in Power Automate for desktop.
- B. Select the Timeout property and update the duration to PT20M.
- C. Select the Timeout property and update the duration to P20M.
- D. Launch Power Automate for desktop.
- E. Navigate to Desktop flow action settings in the cloud flow.

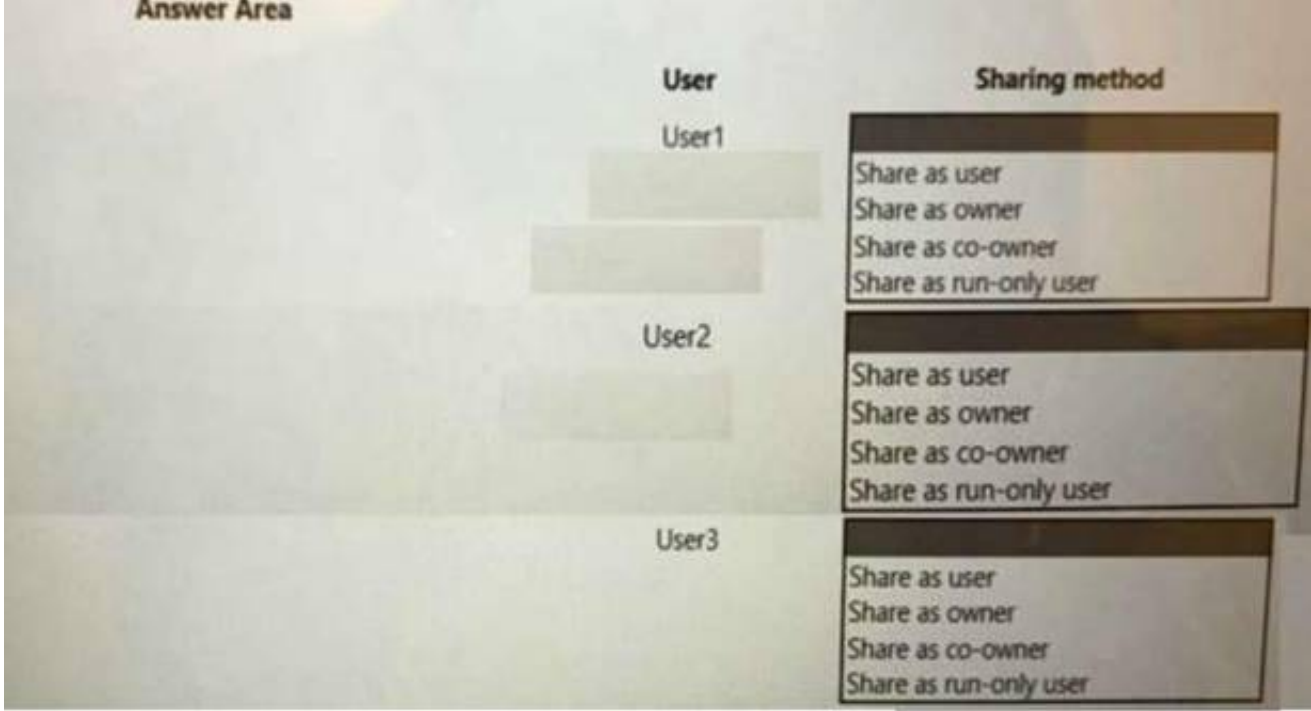
Answer: AD

NEW QUESTION 6

- (Exam Topic 2)

You need to configure sharing for MaintenanceScheduler.

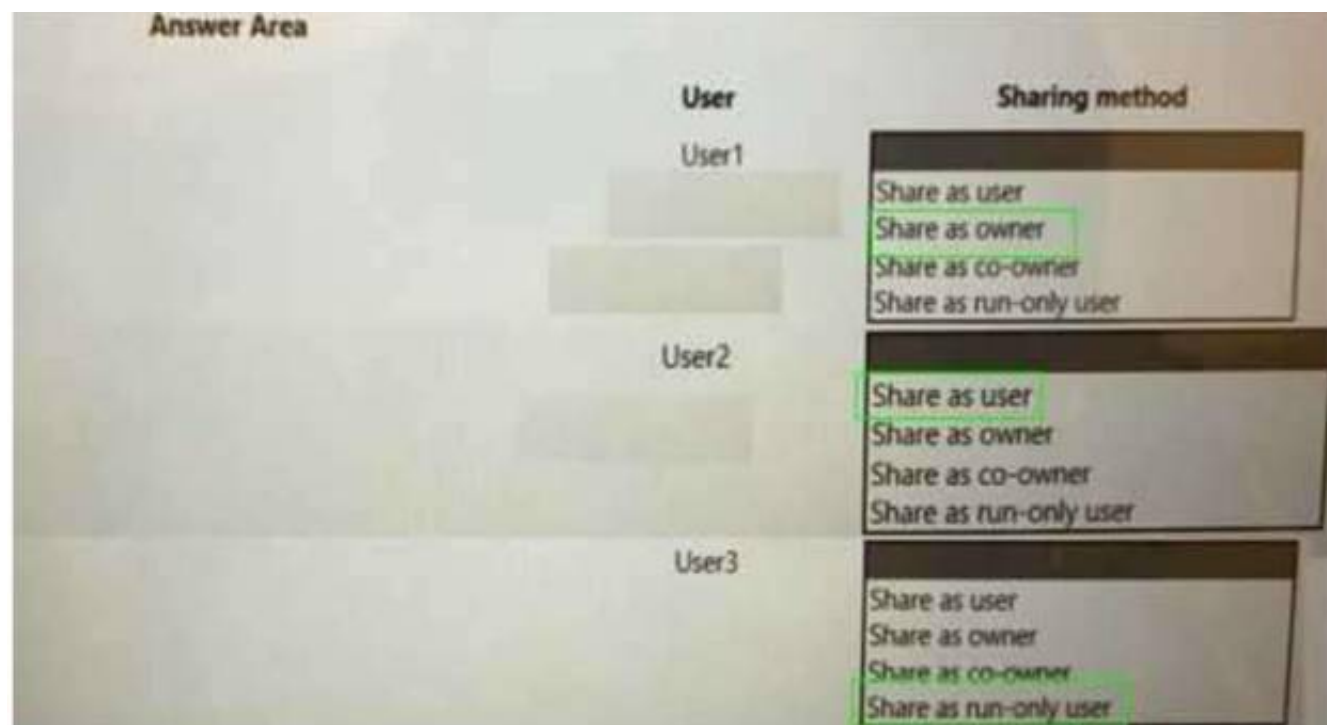
Which sharing methods should you use? To answer, select the appropriate options in the answer area. NOTE: Each correct selection is worth one point.



- A. Mastered
- B. Not Mastered

Answer: A

Explanation:



NEW QUESTION 7

- (Exam Topic 2)

You need to configure the RailStatusUpdater cloud flow. What should you do?

- A. Create a JavaScript function to update the run mode values of each action within the desktop flow.
- B. Create an environment variable
- C. Update each desktop flow action to read the variable.
- D. Manually update each desktop flow action to change the run mode.
- E. Create a desktop flow to update the run mode values of each action within the cloud flow.

Answer: A

NEW QUESTION 8

- (Exam Topic 2)

You need to identify the actions that PipelineManager1 can perform.

Which three actions can PipelineManager1 perform? Each correct answer presents a complete solution. NOTE: Each correct selection is worth one point.

- A. Override the DLP policy.
- B. Modify or delete a flow.
- C. Modify the owner's connection credentials.
- D. View the run history.
- E. Set the cloud flow priority.
- F. Add or remove other owners.

Answer: CDF

NEW QUESTION 9

- (Exam Topic 2)

You need to package the automations. What should you do?

- A. Show dependencies within the solution.
- B. Remove unmanaged layers.
- C. Add required components to each item within the solution.
- D. Add existing components to the solution.

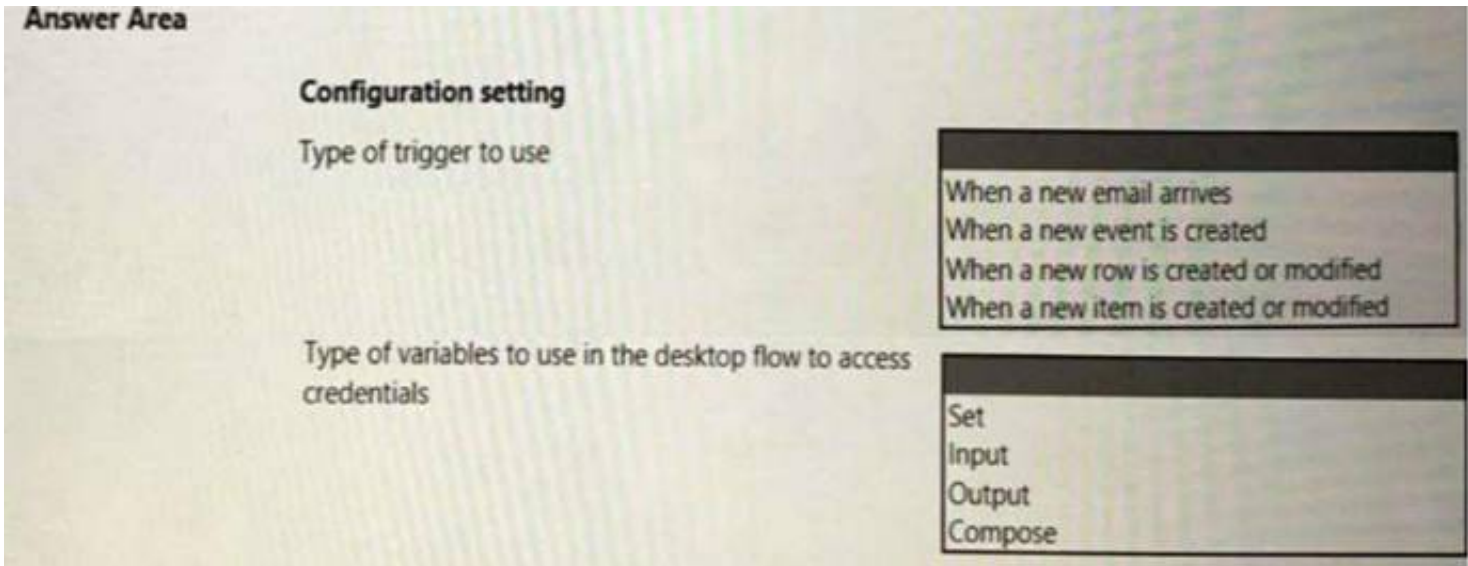
Answer: B

NEW QUESTION 10

- (Exam Topic 2)

You need to configure the solution for the ERPDataOperations flow.

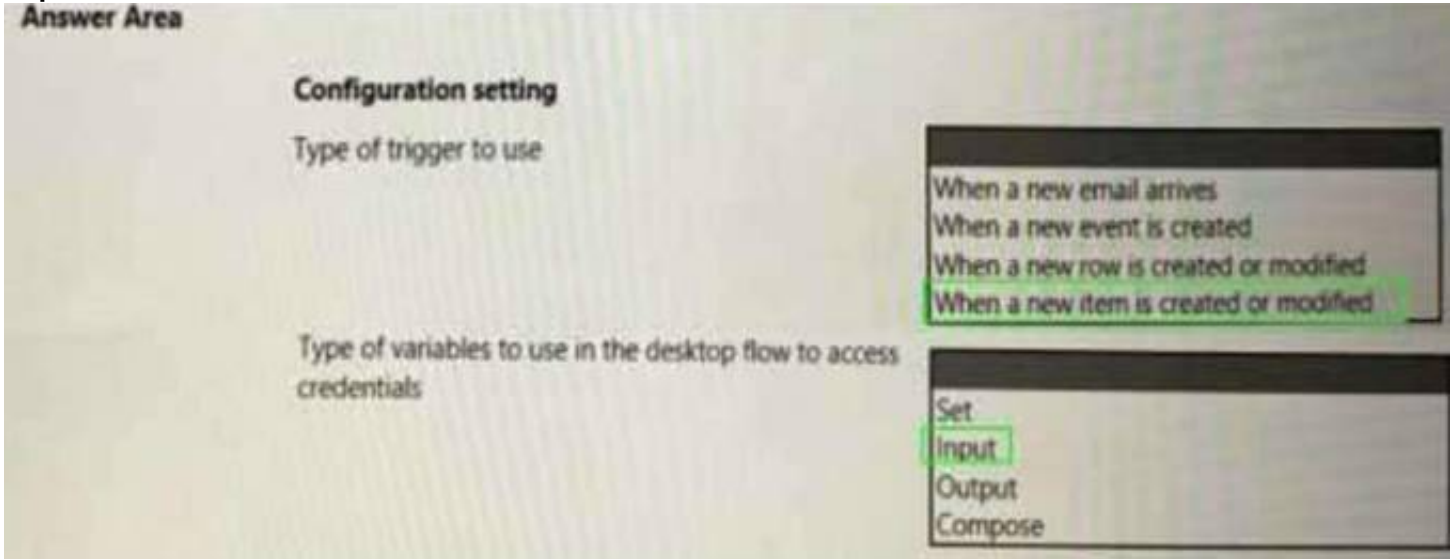
Which configuration values should you use? To answer, select the appropriate options in the answer area, NOTE: Each correct selection is worth one point.



- A. Mastered
- B. Not Mastered

Answer: A

Explanation:



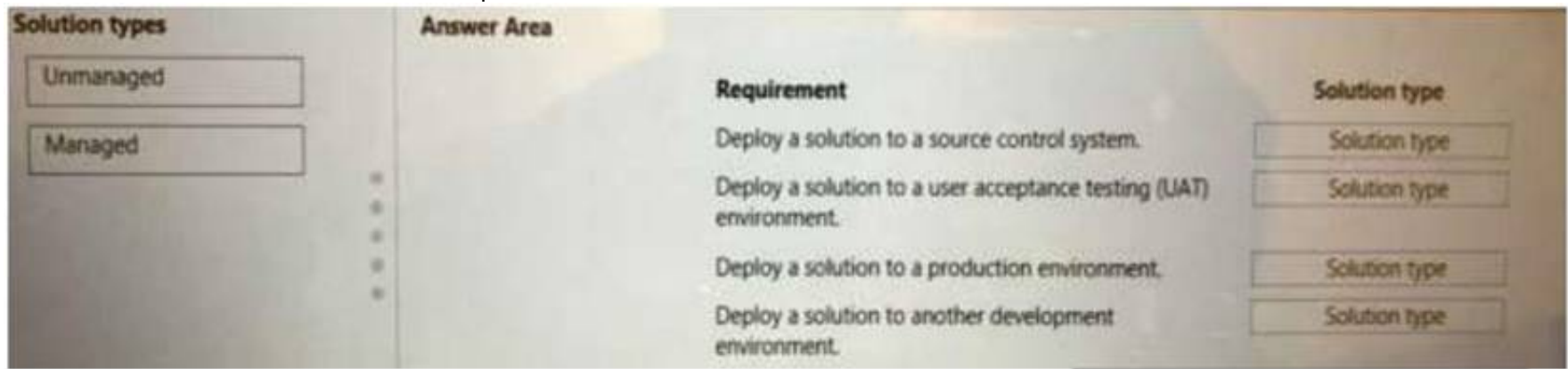
NEW QUESTION 10

- (Exam Topic 3)

You develop automation solutions for a company. The company does not permit changes to a deployed solution in user acceptance testing (UAT) a environments. You need to package the solutions.

Which type of solutions should you create? To answer, drag the appropriate solution types to the correct requirements. Each solution type may be used once, more the once, or not at all. You may need to drag the split bar between panes or scroll to view content.

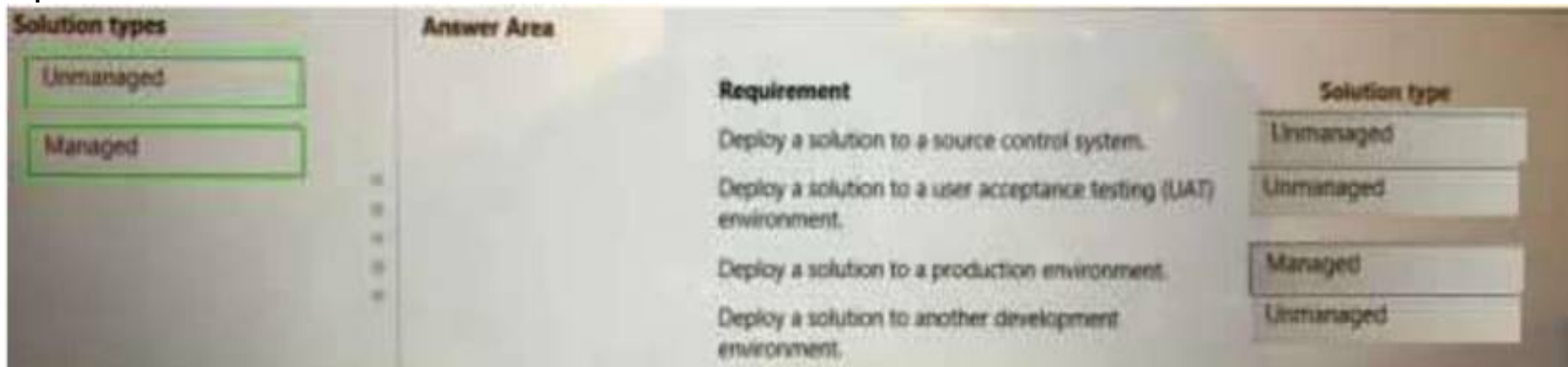
NOTE: Each correct selection is worth one point.



- A. Mastered
- B. Not Mastered

Answer: A

Explanation:



NEW QUESTION 15

- (Exam Topic 3)

A user is evaluating the capabilities of both process mining and task mining. You need to determine when you should use process mining or task mining. Which Process advisor capability should you use? To answer, drag the appropriate capabilities to the correct requirements. Each capability may be used once, more than once, or not at all. You may need to drag the split bar between panes or scroll to view content.
NOTE: Each correct selection is worth one point.

Capabilities

Process mining

Task mining

Answer Area

Requirement

See the actual steps used to perform a process.

Reduce process time by evaluating event data from a system of record.

Understand what employees do while performing each task.

Identify the most common actions based on user interactions.

Capability

Capability

Capability

Capability

- A. Mastered
- B. Not Mastered

Answer: A

Explanation:

Capabilities

Process mining

Task mining

Answer Area

Requirement

See the actual steps used to perform a process.

Reduce process time by evaluating event data from a system of record.

Understand what employees do while performing each task.

Identify the most common actions based on user interactions.

Capability

Process mining

Task mining

Process mining

Task mining

NEW QUESTION 20

- (Exam Topic 3)

You are preparing to share a desktop flow. You need to share the flow with another user. Which two methods can you use? Each correct answer presents a complete solution.
NOTE: Each correct selection is worth one point.

- A. Share the desktop flow by using the Microsoft Power Platform admin center.
- B. Share the desktop flow by using the Power Automate porta
- C. Grant the user permissions to access the flow.
- D. Export a solution that contains the desktop flow and provide the solution to the user.
- E. Create a managed solution that contains the desktop flow and share the solution with another user.

Answer: CD

NEW QUESTION 25

- (Exam Topic 3)

You plan to use a cloud flow.
The flow must be contained within a solution. You need to add the cloud flow to a solution.
Solution: Add an existing cloud flow from a managed solution to a new unmanaged solution. Does the solution meet the goal?

- A. Yes
- B. No

Answer: B

NEW QUESTION 29

- (Exam Topic 3)

You are developing a custom connector.
You need to create the definition for the connector.
Which features should you use? To answer, select the appropriate options in the answer area. NOTE: Each correct selection is worth one point.

Answer Area

Scenario	Feature
Define operations that users can perform.	<div>Code</div> <div>Action</div> <div>Policy</div> <div>Trigger</div>
Define actions that will be invoked by events.	<div>Code</div> <div>Action</div> <div>Policy</div> <div>Trigger</div>
Change the host URL for specific actions.	<div>Code</div> <div>Action</div> <div>Policy</div> <div>Trigger</div>
Extract data from responses by using regex expressions.	<div>Code</div> <div>Action</div> <div>Policy</div> <div>Trigger</div>

- A. Mastered
B. Not Mastered

Answer: A

Explanation:

Answer Area

Scenario	Feature
Define operations that users can perform.	<div>Code</div> <div>Action</div> <div>Policy</div> <div>Trigger</div>
Define actions that will be invoked by events.	<div>Code</div> <div>Action</div> <div>Policy</div> <div>Trigger</div>
Change the host URL for specific actions.	<div>Code</div> <div>Action</div> <div>Policy</div> <div>Trigger</div>
Extract data from responses by using regex expressions.	<div>Code</div> <div>Action</div> <div>Policy</div> <div>Trigger</div>

NEW QUESTION 31

- (Exam Topic 3)

You are creating an automation for a company. When a new record is created in a Microsoft Dataverse table, the automation must add the same data to an enterprise resource planning (ERP) system. The ERP system does not have an API.

You need to create the automation solution.

What should you use? To answer, select the appropriate options in the answer area. NOTE: Each correct selection is worth one point.

Answer Area

Requirement	Solution
Trigger an automation to run when the new record is created.	<div>Cloud flow</div> <div>Desktop flow</div> <div>Model-driven app</div>
Add the data to the ERP system.	<div>Cloud flow</div> <div>Desktop flow</div> <div>Model-driven app</div>

- A. Mastered
B. Not Mastered

Answer: A

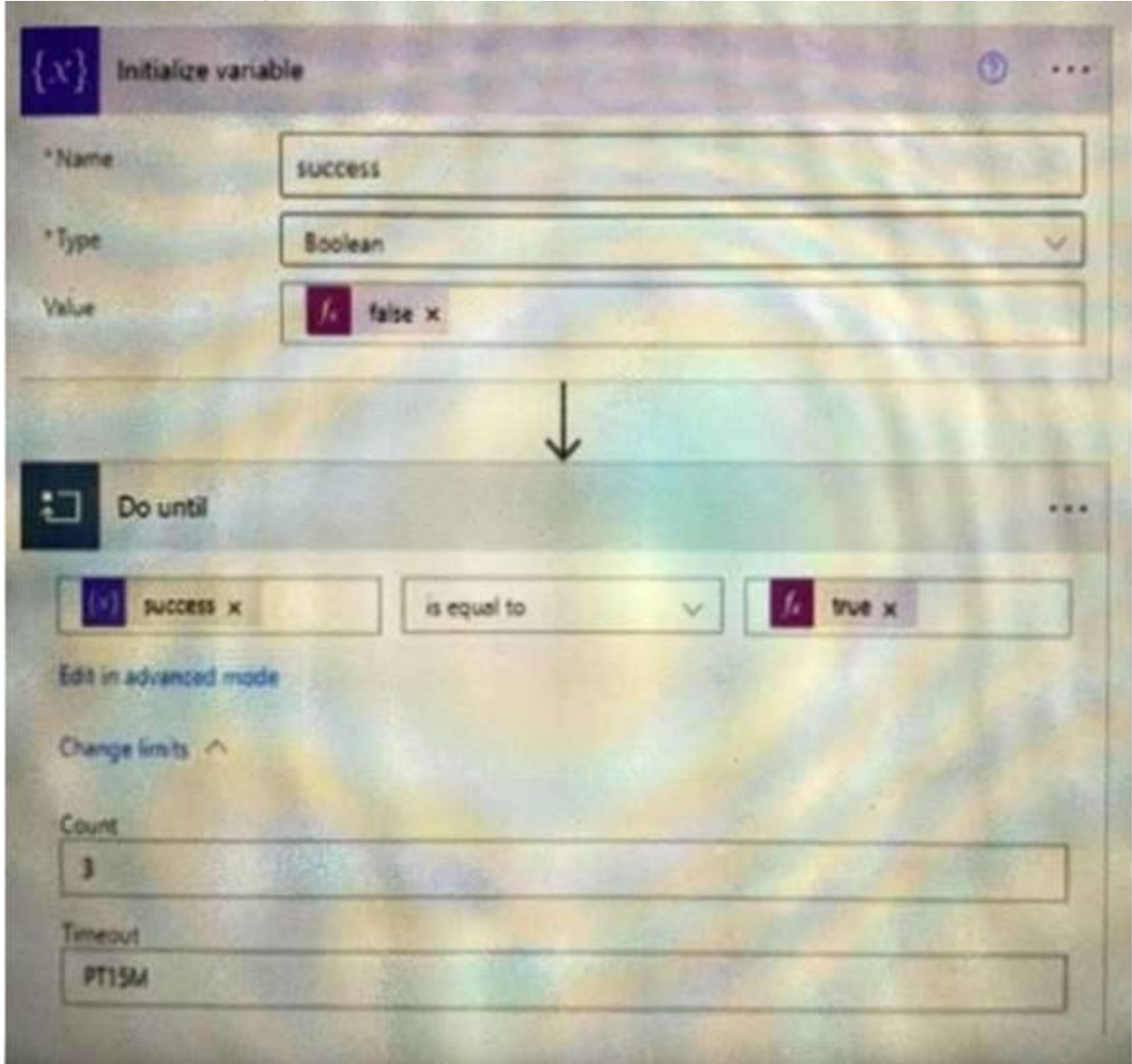
Explanation:

Requirement	Solution
Trigger an automation to run when the new record is created.	Cloud flow Desktop flow Model-driven app
Add the data to the ERP system.	Cloud flow Desktop flow Model-driven app

NEW QUESTION 35

- (Exam Topic 3)

You create the following flow:



For each of the following statements, select Yes if the statement is true. Otherwise, select No. NOTE: Each correct selection is worth one point.

Questions	Response
What does the value 3 in the Count property represent?	The do until action will retry up to three times if there are any failures. The do until actions must succeed three times before moving on to the next action.
What does the value PT15M in the Timeout property represent?	The do until must run for a minimum of 15 minutes. The flow cannot exceed 15 minutes of total run time. The do until will time out when it reaches 15 minutes.

- A. Mastered
- B. Not Mastered

Answer: A

Explanation:

Answer Area	
Questions	Response
What does the value 3 in the Count property represent?	<div>The do until action will retry up to three times if there are any failures.</div> <div>The do until actions must succeed three times before moving on to the next action.</div>
What does the value PT15M in the Timeout property represent?	<div>The do until must run for a minimum of 15 minutes.</div> <div>The flow cannot exceed 15 minutes of total run time.</div> <div>The do until will time out when it reaches 15 minutes.</div>

NEW QUESTION 38

- (Exam Topic 3)

You are trying to record the process that a hospitality facility uses to check in patients. You need to identify bottlenecks and variations in the process. What should you use?

- A. Process Advisor
- B. Flow checker
- C. AI Builder
- D. Solution checker

Answer: D

NEW QUESTION 39

- (Exam Topic 3)

You develop a desktop flow. You need to debug the flow.

Which three tools can you use? Each correct answer presents a complete solution. NOTE: Each correct selection is worth one point.

- A. Static results
- B. Run from here
- C. Breakpoints
- D. Configure run after
- E. Run next action

Answer: BCE

NEW QUESTION 40

- (Exam Topic 3)

You are developing a cloud flow.

The flow must be able to query several Azure endpoints and must use standard actions where possible. You need to configure the flow.

Which actions should you use? To answer, select the appropriate options in the answer area. NOTE: Each correct selection is worth one point.

Requirement	Action
Issue POST requests to the Microsoft Graph API by using application permissions.	<div>HTTP</div> <div>HTTP with Azure AD</div> <div>Send an HTTP request to SharePoint</div> <div>Office 365 groups send an HTTP request</div>
Issue GET requests to the Microsoft Graph API by using delegated permissions.	<div>HTTP</div> <div>HTTP with Azure AD</div> <div>Send an HTTP request to SharePoint</div> <div>Office 365 groups send an HTTP request</div>
Issue GET requests to the SharePoint REST API by using delegated permissions.	<div>HTTP</div> <div>HTTP with Azure AD</div> <div>Send an HTTP request to SharePoint</div> <div>Office 365 groups send an HTTP request</div>
Issue GET requests to the SharePoint REST API by using delegated permissions.	<div>HTTP</div> <div>HTTP with Azure AD</div> <div>Send an HTTP request to SharePoint</div> <div>Office 365 groups send an HTTP request</div>
Issue POST requests to SharePoint REST API by using application permissions.	<div>HTTP</div> <div>HTTP with Azure AD</div> <div>Send an HTTP request to SharePoint</div> <div>Office 365 groups send an HTTP request</div>

- A. Mastered
- B. Not Mastered

Answer: A

Explanation:

Requirement	Action
Issue POST requests to the Microsoft Graph API by using application permissions.	HTTP HTTP with Azure AD Send an HTTP request to SharePoint Office 365 groups send an HTTP request
Issue GET requests to the Microsoft Graph API by using delegated permissions.	HTTP HTTP with Azure AD Send an HTTP request to SharePoint Office 365 groups send an HTTP request
Issue GET requests to the SharePoint REST API by using delegated permissions.	HTTP HTTP with Azure AD Send an HTTP request to SharePoint Office 365 groups send an HTTP request
Issue GET requests to the SharePoint REST API by using delegated permissions.	HTTP HTTP with Azure AD Send an HTTP request to SharePoint Office 365 groups send an HTTP request
Issue POST requests to SharePoint REST API by using application permissions.	HTTP HTTP with Azure AD Send an HTTP request to SharePoint Office 365 groups send an HTTP request

NEW QUESTION 43

- (Exam Topic 3)

You are designing a user interface automation that uses a Power Automate for desktop flow. The solution must allow you to use wildcard characters including question marks and asterisks to define a window. You need to select the window mode for the automation. Which window mode should you use?

- A. By window UI element
- B. By title and/or class
- C. By window instance/handle
- D. By variable

Answer: D

NEW QUESTION 44

- (Exam Topic 3)

You plan to use a cloud flow. The flow must be contained within a solution. You need to add the cloud flow to a solution. Solution; Create a scheduled cloud flow outside of a solution. Add the cloud flow into a managed solution. Does the solution meet the goal?

- A. Yes
- B. No

Answer: A

NEW QUESTION 46

- (Exam Topic 3)

You are developing a solution for a medical practice. The solution must use an artificial intelligence (AI) model to evaluate medical X-ray images and detect broken bones. You need to create the AI model for the solution. Solution: Use Azure Computer Vision to create the model. Does the solution meet the goal?

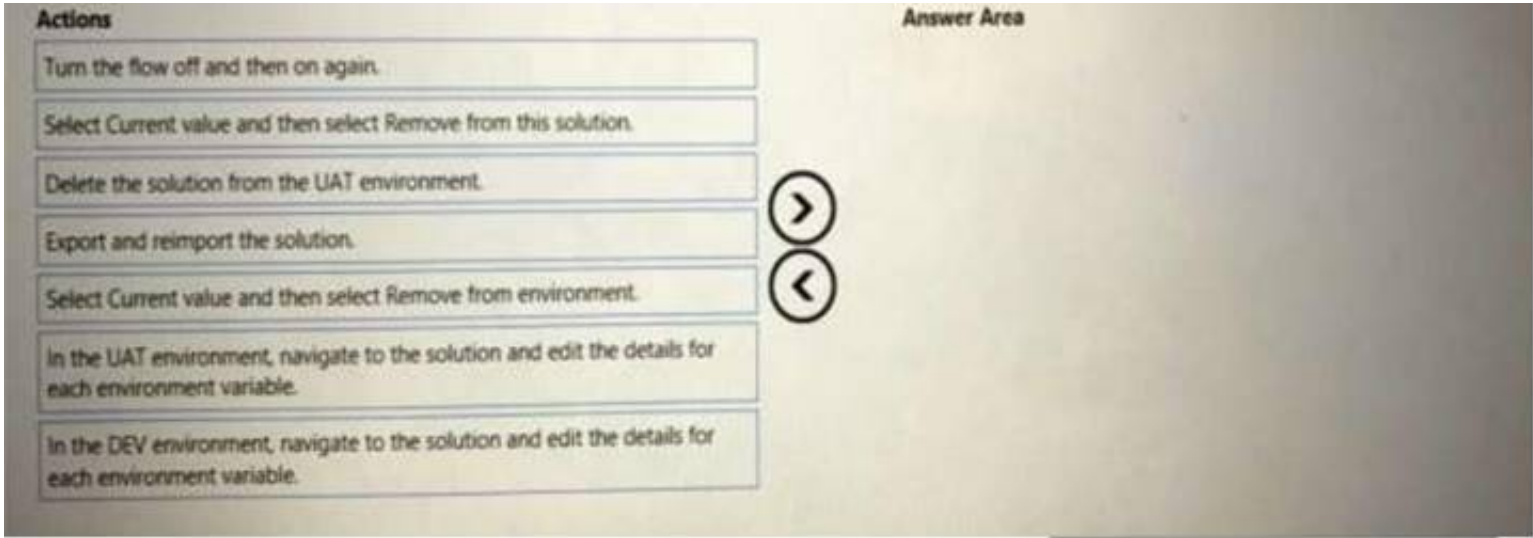
- A. Yes
- B. No

Answer: B

NEW QUESTION 48

- (Exam Topic 3)

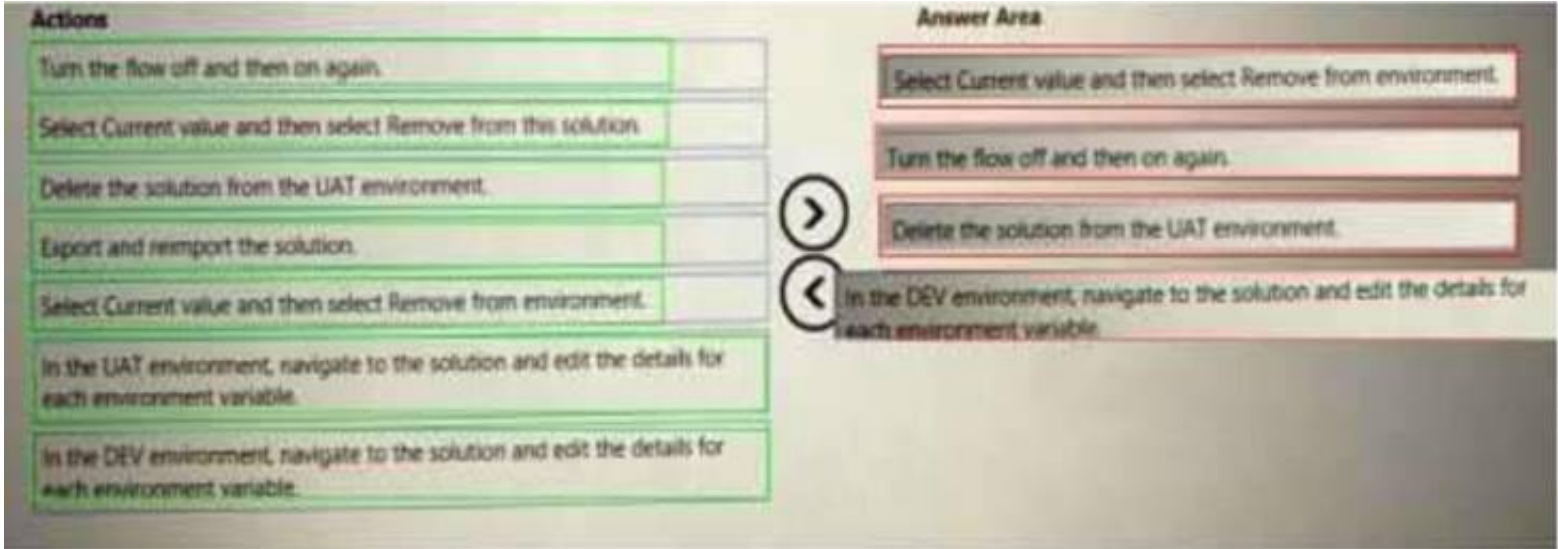
You create a Microsoft Power Platform solution. You create variables to define input values for the flow. You export the solution as managed and import the solution into a user acceptance testing (UAT) environment. The flow in the UAT environment is still using the values from the development (DEV) environment. You need to resolve the issue. Which four actions should you perform in sequence? To answer, move the appropriate actions from the list of actions to the answer area and arrange them in the correct order.



- A. Mastered
- B. Not Mastered

Answer: A

Explanation:

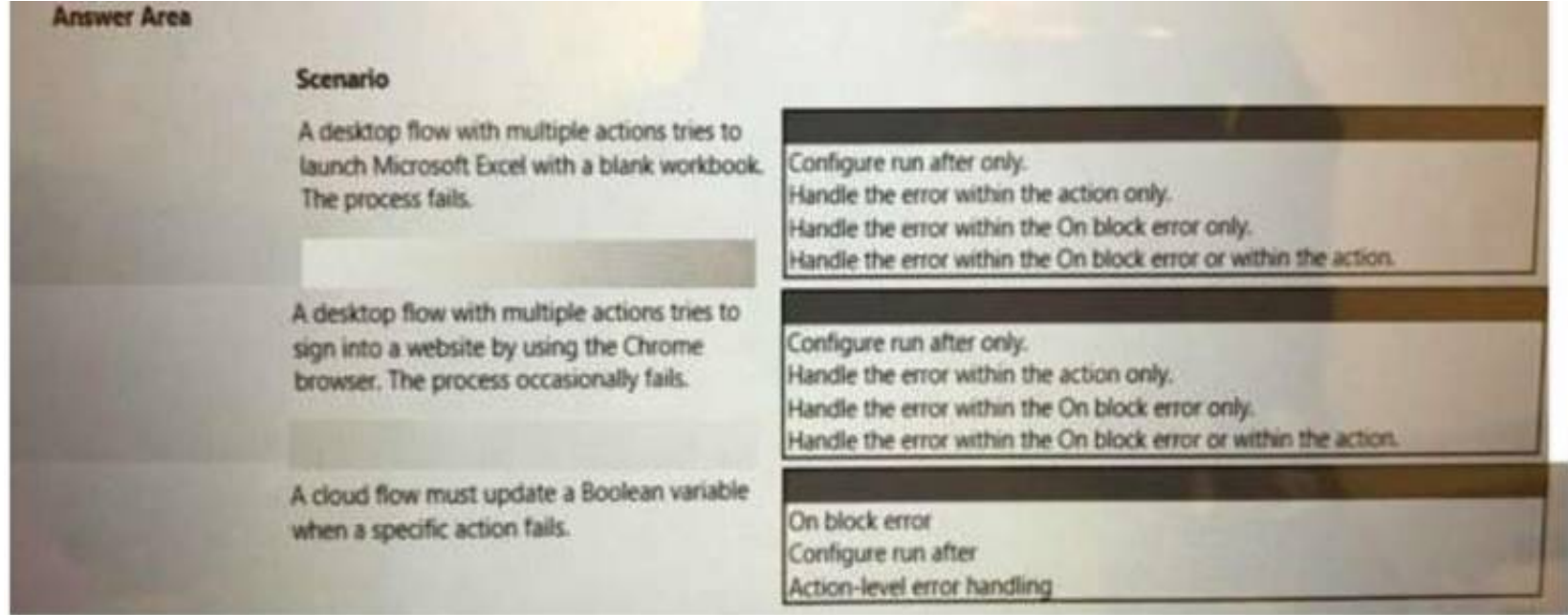


NEW QUESTION 52

- (Exam Topic 3)

You are developing automation solutions for a company.

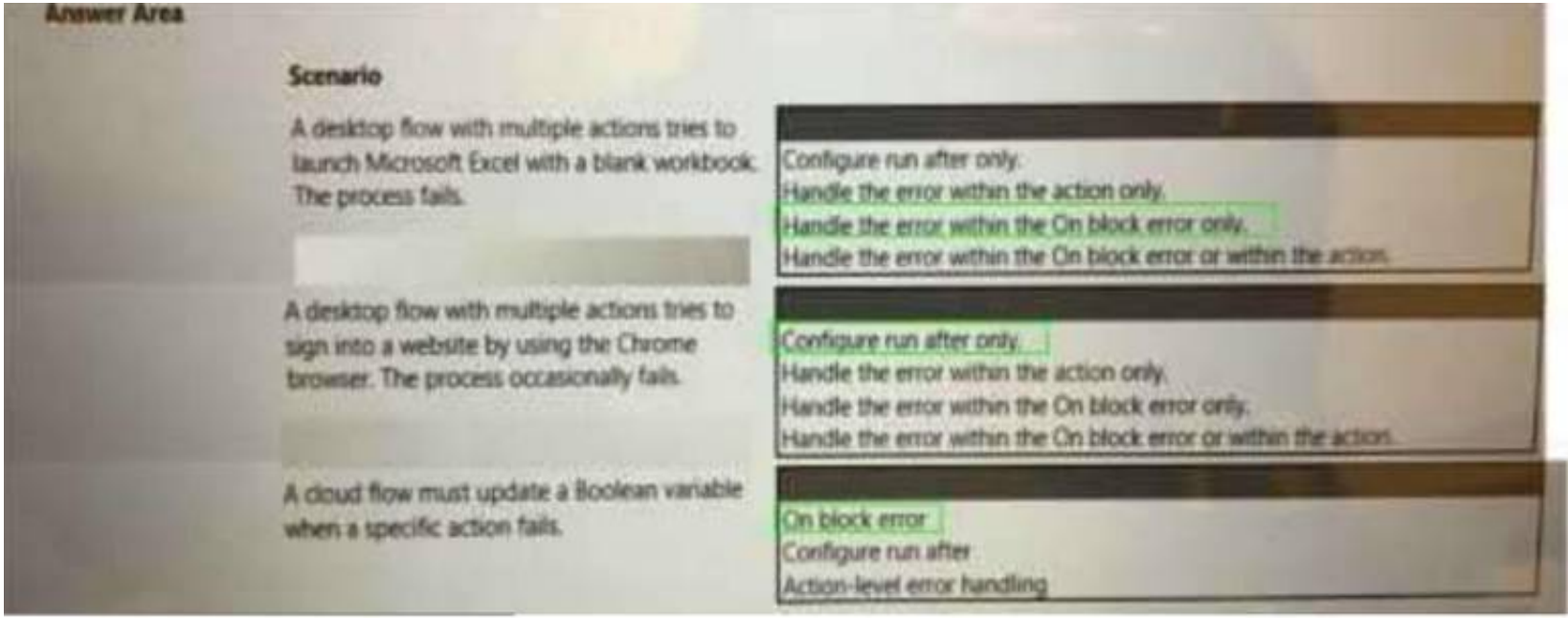
You need to select the appropriate error handling action for the following scenarios. Which actions should you use? To answer, select the appropriate options in the answer area. NOTE: Each correct selection is worth one point.



- A. Mastered
- B. Not Mastered

Answer: A

Explanation:



NEW QUESTION 54

- (Exam Topic 3)
You develop a desktop flow. The flow performs five actions in sequence.
If an error occurs, you must restart the flow from the first action. You add the five actions to an On block error action.
You need to configure error handling.
Which two actions should you perform? Each correct answer presents part of the solution. NOTE: Each correct selection is worth one point.

- A. Change the exception handling mode to Go to the beginning of the block.
- B. Select Continue flow run.
- C. Select Throw error.
- D. Change the exception handling mode to Go to next action.
- E. Configure an On error condition for the first action.

Answer: ACE

NEW QUESTION 55

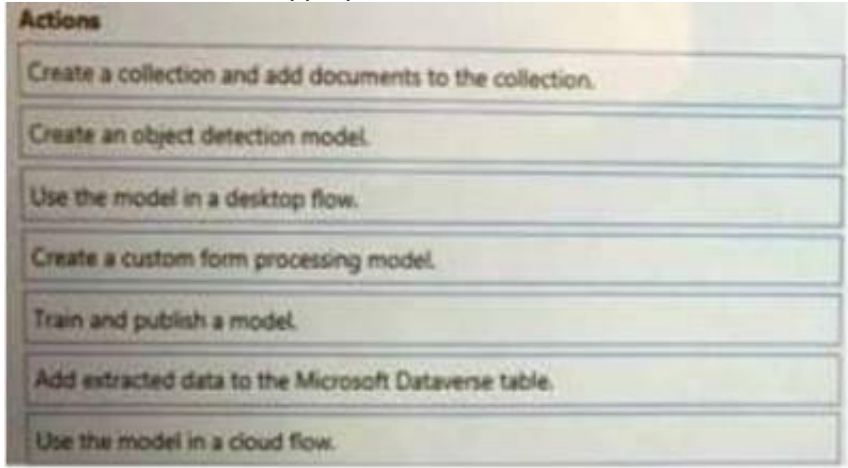
- (Exam Topic 3)
You are creating a cloud flow that will use two Update Row actions to interact with Microsoft Dataverse. Neither of these actions are dependent on each other.
You must minimize the amount of processing time required to complete the flow. You need to implement the actions in the cloud flow.
Solution: Create a switch condition. Does the solution meet the goal?

- A. Yes
- B. No

Answer: B

NEW QUESTION 57

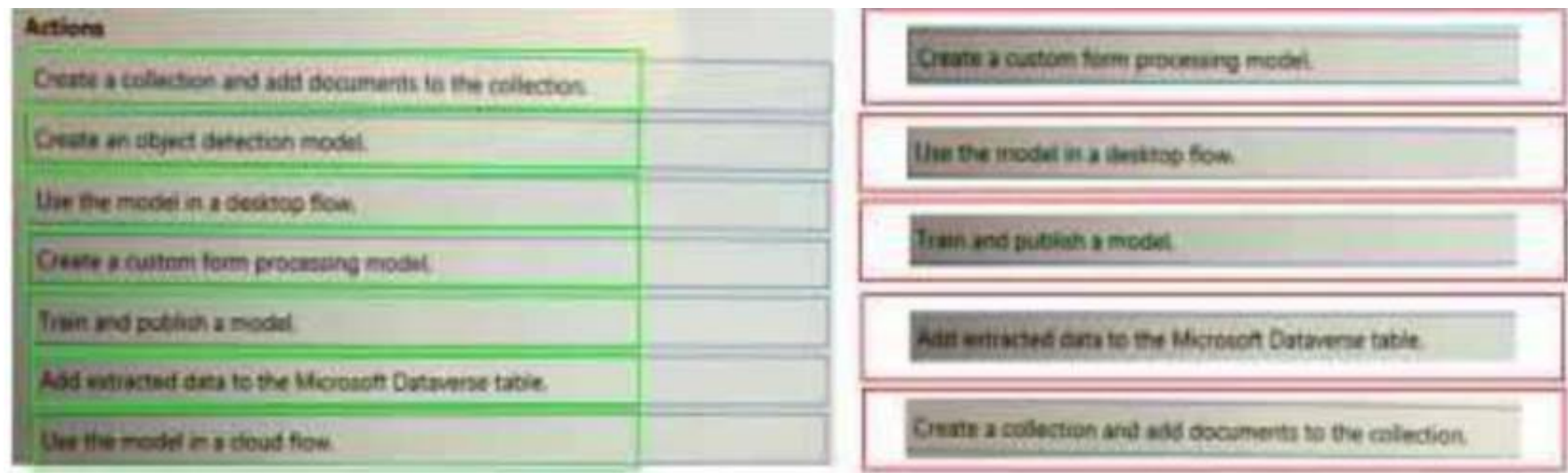
- (Exam Topic 3)
You are designing an automation that processes information from documents attached to emails.
You need to extract data from the attachments and insert the data into a custom Microsoft Dataverse table. Which five actions should you perform in sequence?
To answer, move the appropriate actions from the list of actions to the answer



- A. Mastered
- B. Not Mastered

Answer: A

Explanation:



NEW QUESTION 58

- (Exam Topic 3)

You must create new flows within a solution and import existing flows into the solution. You need to configure the solution. Which three actions can you perform? Each correct answer presents a complete solution. NOTE: Each correct selection is worth one point.

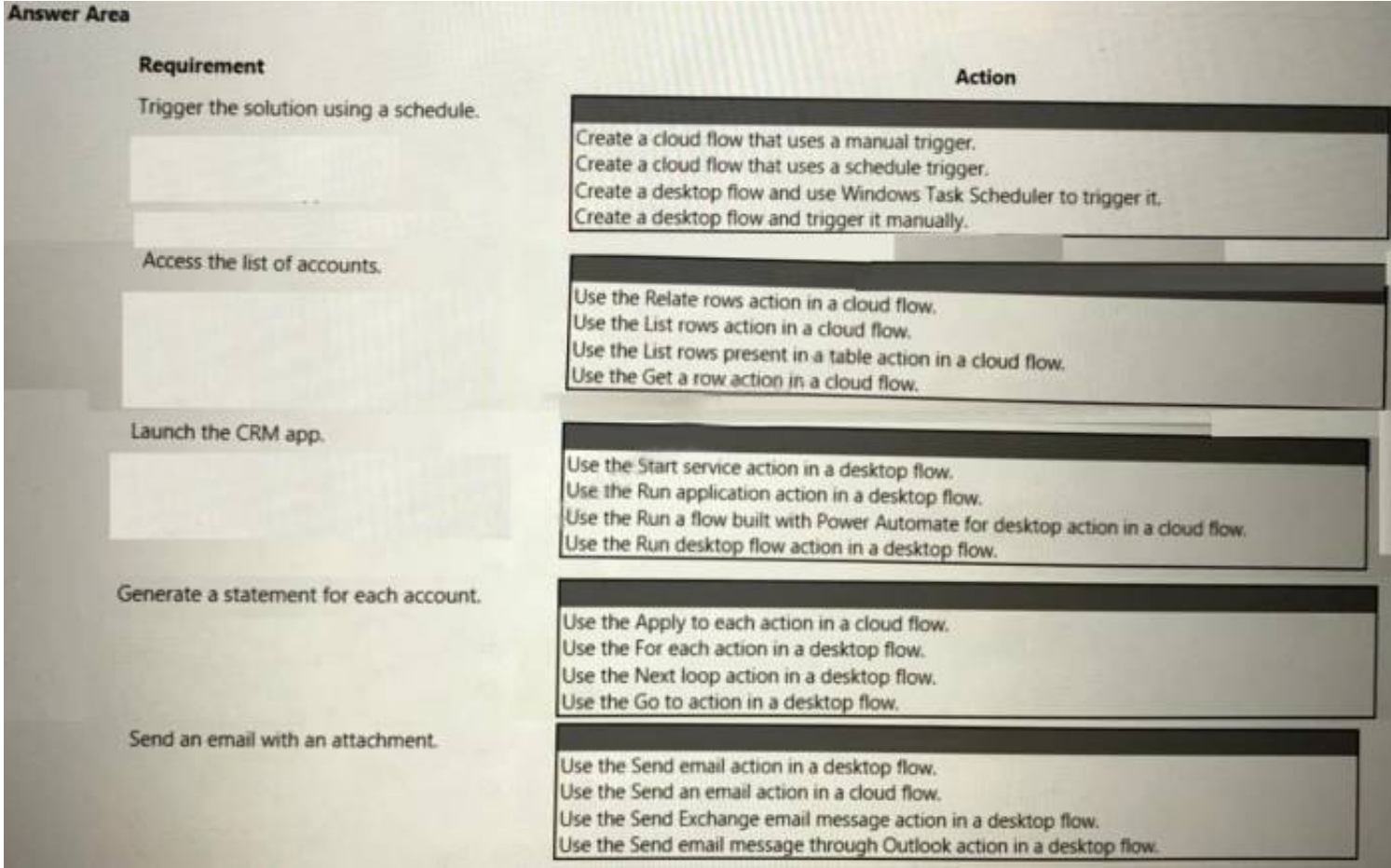
- A. Create the flows within the solution to automatically create connection references.
- B. Add credential information to each connection reference.
- C. Modify each trigger and action when you add a flow into the solution to use connection references
- D. Select connections for connection references when you import solutions into an environment
- E. Add an existing connection reference into the solution in the same environment.

Answer: ADE

NEW QUESTION 59

- (Exam Topic 3)

A company has a customer relationship management (CRM) app installed on a machine. Each month an employee signs into the machine by using their Azure Active Directory (Azure AD) account to generate a financial statement for each account in a list of accounts. The list of accounts is stored in Microsoft Dataverse. The employee must send each customer their statements by using Office 365 Outlook. You need to develop a solution to automate the task. Which components should you use? To answer, select the appropriate options in the answer area.



- A. Mastered
- B. Not Mastered

Answer: A

Explanation:

Requirement	Action
Trigger the solution using a schedule.	Create a cloud flow that uses a manual trigger. Create a cloud flow that uses a schedule trigger. Create a desktop flow and use Windows Task Scheduler to trigger it. Create a desktop flow and trigger it manually.
Access the list of accounts.	Use the Relate rows action in a cloud flow. Use the List rows action in a cloud flow. Use the List rows present in a table action in a cloud flow. Use the Get a row action in a cloud flow.
Launch the CRM app.	Use the Start service action in a desktop flow. Use the Run application action in a desktop flow. Use the Run a flow built with Power Automate for desktop action in a cloud flow. Use the Run desktop flow action in a desktop flow.
Generate a statement for each account.	Use the Apply to each action in a cloud flow. Use the For each action in a desktop flow. Use the Next loop action in a desktop flow. Use the Go to action in a desktop flow.
Send an email with an attachment.	Use the Send email action in a desktop flow. Use the Send an email action in a cloud flow. Use the Send Exchange email message action in a desktop flow. Use the Send email message through Outlook action in a desktop flow.

NEW QUESTION 63

- (Exam Topic 3)
You have a Microsoft Dataverse table in a solution. You delete fields from the table.
You need to automatically delete the fields from the Microsoft Dataverse table when you import the updated solution into a target environment
Which import option should you use?

- A. Stage for upgrade
- B. Update
- C. Upgrade

Answer: C

NEW QUESTION 66

- (Exam Topic 3)
You are developing a flow that interacts with a Microsoft Dataverse table named Account. The table includes the following columns:

Name	Data type	Description
websiteurl	URL	
crabd_triggerflow	Choice	Option 1 text: Yes Option 1 value: 126690000 Option 2 text: No Option 2 value: 126690001

The flow must only trigger when a record is added to the Accounts table and the following conditions are met:

- the websiteurl field is set to https://microsoft.com
- the crabd.triggerflow field is set to Yes

You need to configure the flow trigger.
Which trigger condition expression should you use?

- A) `@and(equals(triggerOutputs()?['body/crabd_triggerflow'],'126690000'), equals(triggerOutputs()?['body/websiteurl'], 'https://microsoft.com'))`
- B) `@or(equals(triggerOutputs()?['body/crabd_triggerflow'],126690000), equals(triggerOutputs()?['body/websiteurl'], 'https://microsoft.com'))`
- C) `@and(equals(triggerOutputs()?['body/crabd_triggerflow'],126690000), equals(triggerOutputs()?['body/websiteurl'], 'https://microsoft.com'))`
- D) `@or(equals(triggerOutputs()?['body/crabd_triggerflow'],'126690000'), equals(triggerOutputs()?['body/websiteurl'], 'https://microsoft.com'))`

- A. Option A
- B. Option B
- C. Option C
- D. Option D

Answer: A

NEW QUESTION 68

- (Exam Topic 3)

You are developing automation solutions for a company.

You need to select the components to use for each scenario. You must minimize development efforts. Which methods should you use? To answer, select the appropriate options in the answer area.

NOTE: Each correct selection is worth one point.

Scenario	Component
Query items from a SharePoint list.	<div><div>Built-in connector</div><div>Custom connector</div><div>HTTP connector</div><div>Azure API Management</div></div>
Share methods from a third-party REST API with an organization.	<div><div>Built-in connector</div><div>Custom connector</div><div>HTTP connector</div><div>Browser automation</div></div>
Call a Microsoft Graph API endpoint using application permissions.	<div><div>Built-in connector</div><div>Custom connector</div><div>HTTP connector</div><div>Azure API Management</div></div>

- A. Mastered
- B. Not Mastered

Answer: A

Explanation:

Scenario	Component
Query items from a SharePoint list.	<div><div>Built-in connector</div><div>Custom connector</div><div>HTTP connector</div><div>Azure API Management</div></div>
Share methods from a third-party REST API with an organization.	<div><div>Built-in connector</div><div>Custom connector</div><div>HTTP connector</div><div>Browser automation</div></div>
Call a Microsoft Graph API endpoint using application permissions.	<div><div>Built-in connector</div><div>Custom connector</div><div>HTTP connector</div><div>Azure API Management</div></div>

NEW QUESTION 71

- (Exam Topic 3)

You have an automation solution that uses a desktop flow. The flow reads data from a file that is stored on a user's machine and writes the data to an application. You import the solution to an environment that is connected to another user's machine.

The user reports that the flow fails. An alert indicates that the path to a file does not exist. You confirm that the file is present on the user's desktop. You need to resolve the issue. What should you do?

- A. Move the file to the user's documents folder.
- B. Move the file to the user's OneDrive storage.
- C. Delete and recreate the file.
- D. Change the location of the file to a specific path that is not dependent on the signed-in user.

Answer: A

NEW QUESTION 72

- (Exam Topic 3)

You develop automation solutions for a company.

When a new record is added to a Microsoft Dataverse table, the solution must add the contents of the record to a Microsoft Word Online (Business) template The solution must convert the template to a PDF document and email the PDF document to a stakeholder.

You need to design the solution.

Which three actions should you perform? Each correct answer presents part of the solution. NOTE: Each correct selection is worth one point.

- A. Use the Populate a Microsoft Word Online (Business) template action in a desktop flow.
- B. Create a cloud flow that uses the When a row is added or modified trigger in Microsoft Dataverse.
- C. Use the Populate a Microsoft Word Online (Business) template action in a cloud flow.

- D. Use the Convert Word Document to PDF and Send an email actions in a cloud flow.
- E. Use the Convert Word Document to PDF and Send an email actions in a desktop flow.

Answer: ABE

NEW QUESTION 74

- (Exam Topic 3)

You are developing a new release for an automation solution. You need to use the right feature.

Which feature should you use? To answer, select the appropriate options in the answer area. NOTE: Each correct selection is worth one point.

Scenario	Action
Upgrade a single cloud flow from a solution.	Clone a patch. Clone a solution. Export as managed solution. Export as unmanaged solution.
Release a new major version of a solution.	Clone a patch. Clone a solution. Export as managed solution. Export as unmanaged solution.
Synchronize solution components between development and production environments.	Update. Upgrade. Import as managed solution. Import as unmanaged solution.
Overwrite a solution in a production environment.	Update. Upgrade. Import as managed solution. Import as unmanaged solution.

- A. Mastered
- B. Not Mastered

Answer: A

Explanation:

Scenario	Action
Upgrade a single cloud flow from a solution.	Clone a patch. Clone a solution. Export as managed solution. Export as unmanaged solution.
Release a new major version of a solution.	Clone a patch. Clone a solution. Export as managed solution. Export as unmanaged solution.
Synchronize solution components between development and production environments.	Update. Upgrade. Import as managed solution. Import as unmanaged solution.
Overwrite a solution in a production environment.	Update. Upgrade. Import as managed solution. Import as unmanaged solution.

NEW QUESTION 78

- (Exam Topic 3)

You are developing a desktop flow that reads data from a table in a Microsoft Excel workbook. You need to read the cell in the fourth row and first column of the table. Which two expressions can you use? Each correct answer presents a complete solution.

NOTE: Each correct answer is worth one point.

- A. %ExcelData[4]['Column1']%
- B. %ExcelData[1][4]%
- C. %ExcelDataf"Column1"]][4]X

D. XExcelData[4][9]X

Answer: D

NEW QUESTION 83

- (Exam Topic 3)

A company develops an automation solution.

You need to manage the flows. To answer, select the appropriate options in the answer area. NOTE: Each correct selection is worth one point.

Answer Area

Requirement	Action
You must run one specific flow from the queue after a flow which is currently running completes.	<div>In the desktop flow queue, select move to top.</div> <div>In the desktop flow queue, change the priority.</div> <div>In the cloud flow, change the priority for the desktop flow action to High.</div>
You develop an automation. The automation must run at high priority each time it runs.	<div>In the Desktop flow runs page, change the priority.</div> <div>In the Desktop flow run queue, change the priority.</div> <div>In the cloud flow, change the priority for the desktop flow action to High.</div>

A. Mastered

B. Not Mastered

Answer: A

Explanation:

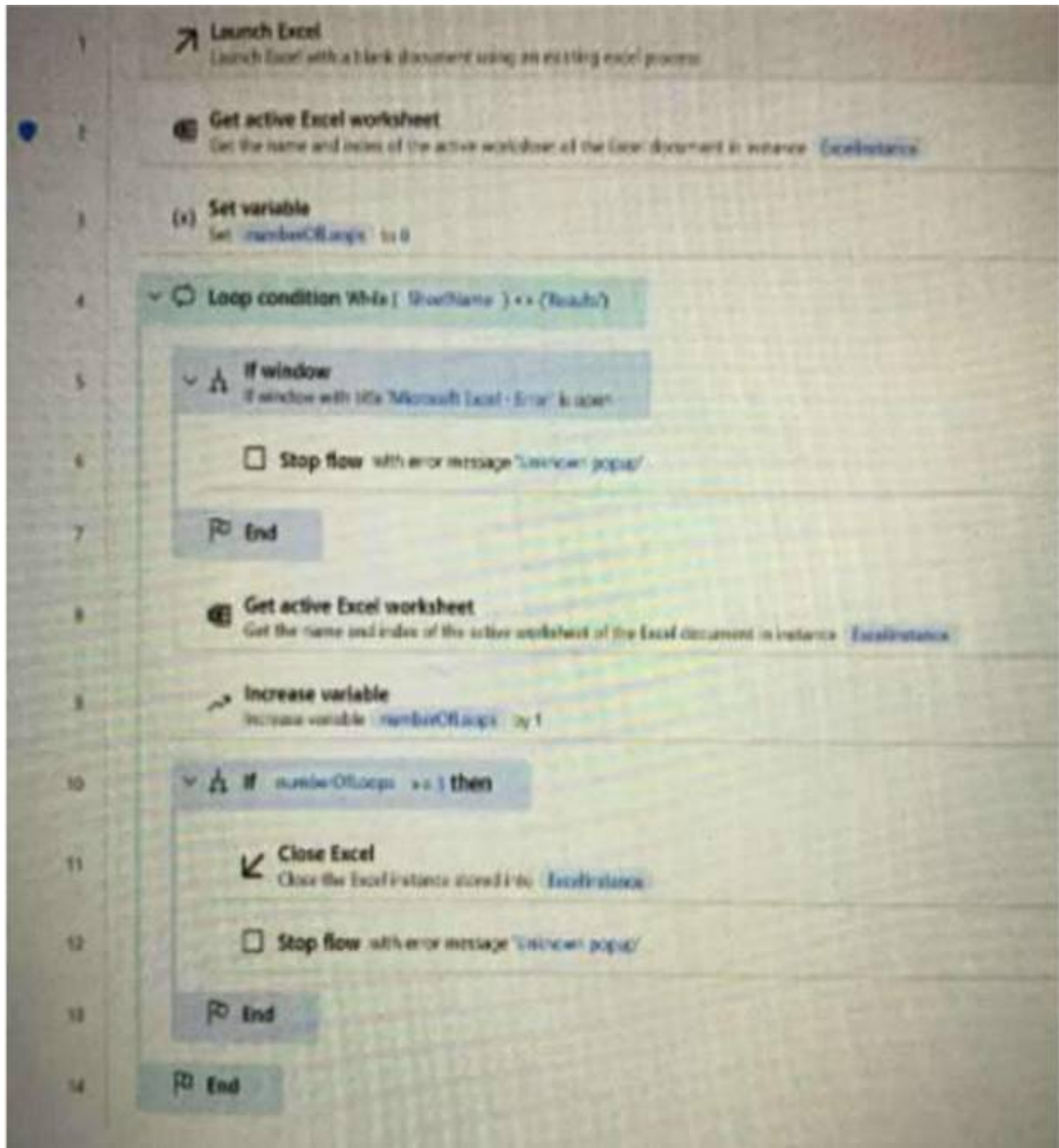
Answer Area

Requirement	Action
You must run one specific flow from the queue after a flow which is currently running completes.	<div>In the desktop flow queue, select move to top.</div> <div>In the desktop flow queue, change the priority.</div> <div>In the cloud flow, change the priority for the desktop flow action to High.</div>
You develop an automation. The automation must run at high priority each time it runs.	<div>In the Desktop flow runs page, change the priority.</div> <div>In the Desktop flow run queue, change the priority.</div> <div>In the cloud flow, change the priority for the desktop flow action to High.</div>

NEW QUESTION 86

- (Exam Topic 3)

You create the following flow:



Questions	Response
What does the icon to the left of line 2 represent?	<div>There is a breakpoint in the code.</div> <div>The action processes sensitive data.</div> <div>The action includes action-level error handling.</div>
When will the loop condition at line 4 initialize?	<div>When the name of the active Excel worksheet is Results.</div> <div>When the name of the active Excel worksheet is anything other than Results.</div>
At which point will the flow stop?	<div>A user opens another Excel window on their desktop.</div> <div>The number of iterations through the loop equals or exceeds five.</div>

- A. Mastered
- B. Not Mastered

Answer: A

Explanation:

Questions	Response
What does the icon to the left of line 2 represent?	<div>There is a breakpoint in the code.</div> <div>The action processes sensitive data.</div> <div>The action includes action-level error handling.</div>
When will the loop condition at line 4 initialize?	<div>When the name of the active Excel worksheet is Results.</div> <div>When the name of the active Excel worksheet is anything other than Results.</div>
At which point will the flow stop?	<div>A user opens another Excel window on their desktop.</div> <div>The number of iterations through the loop equals or exceeds five.</div>

NEW QUESTION 88

- (Exam Topic 3)

You are developing an RPA solution that requires browser automation. You are testing the flow. You observe that the flow does not interact with web page elements in Microsoft Edge. You need to troubleshoot the issue. What should you do?

- A. Enable error handling on the action to retry on failure.
- B. Ensure the UI flows/Selenium extension is downloaded and enabled in Microsoft Edge.
- C. Open Power Automate machine runtime and select Troubleshoot
- D. Ensure the Power Automate for desktop browser extension is downloaded and enabled in Microsoft Edge.

Answer: A

NEW QUESTION 91

- (Exam Topic 3)

You are creating a cloud flow that will use two Update Row actions to interact with Microsoft Dataverse. Neither of these actions are dependent on each other. You must minimize the amount of processing time required to complete the flow. You need to implement the actions in the cloud flow.

Solution: Create two sequential Update Row actions. Does the solution meet the goal?

- A. Yes
- B. No

Answer: A

NEW QUESTION 96

- (Exam Topic 3)

A company plans to implement AI models to perform business processes. You need to determine whether to use prebuilt or custom AI models. Which type of model should you use for each scenario? To answer, drag the appropriate model types to the correct scenarios. Each model may be used once, more than once, or not at all. You may need to drag the split bar between panes or scroll to view content. NOTE: Each correct selection is worth one point.

Model types

Prebuilt

Custom

Scenario

Extract information from a receipt.

Detect spam emails.

Identify the language used in a text document.

Extract information from tax documents.

Model type

Model type

Model type

Model type

- A. Mastered
- B. Not Mastered

Answer: A

Explanation:

Model types

Prebuilt

Custom

Scenario

Extract information from a receipt.

Detect spam emails.

Identify the language used in a text document.

Extract information from tax documents.

Model type

Custom

Custom

Prebuilt

Custom

NEW QUESTION 100

- (Exam Topic 3)

You are designing automation solutions that interact with a desktop application.

You need to select the appropriate UI automation action for each business requirement.

Which automation action should you use? To answer, select the appropriate options in the answer area. NOTE: Each correct selection is worth one point.

Requirement	UI automation action
Retrieve the state from a checkbox in the desktop application.	Get selected checkboxes in window Get details of a UI element in window Get selected radio button in window Extract data from window
Bring the desktop application to the foreground.	Focus window Get details of window Get details of a UI element in window Set window state
Suspend a process until a specific window opens.	Wait for window Wait for window content Set window state Terminate process

- A. Mastered
- B. Not Mastered

Answer: A

Explanation:

Requirement	UI automation action
Retrieve the state from a checkbox in the desktop application.	Get selected checkboxes in window Get details of a UI element in window Get selected radio button in window Extract data from window
Bring the desktop application to the foreground.	Focus window Get details of window Get details of a UI element in window Set window state
Suspend a process until a specific window opens.	Wait for window Wait for window content Set window state Terminate process

NEW QUESTION 103

- (Exam Topic 3)

You are creating a custom selector for a Microsoft Excel workbook by using a Power Automate desktop flow.

Selector builder

Selectors

2

☒

Pane 'Budget2022'

3

☒

Pane 'Sheet Budget'

4

☒

DataGrid 'Grid'

5

☒

Table 'BudgetData'

6

☒

Data Item "'A' 3'

Used

☒

Attribute

Operator

Value

☒

Class

Equal to

XLDESK

☐

Enabled

Equal to

True

☐

Id

Equal to

☐

Name

Equal to

☐

Ordinal

Equal to

-1

☐

Process

Equal to

EXCEL

> pane[Class="XLDESK"] > pane[Class="ExcelGrid"][Id\$="Budget2022.xlsx"] > pane[Id@="Budget[0-9]*"] > datagrid [Id="Grid"] > table[Name\$="BudgetData"] > dataitem[Id="'A' + RowIdx%"]

☒

Custom

Update

Cancel

Questions	Response
A user accidentally changes the name of the Microsoft Excel file to Final_Budget2022.xlsx . Will the selector still work?	<div>Yes</div> <div>No</div>
A Microsoft Excel file contains a worksheet with the name Budget . Will the selector be able to find the worksheet?	<div>Yes</div> <div>No</div>
Which value will be extracted by using this selector?	<div>The value from cell A3.</div> <div>The value of a cell where the ID equals ARowIdx.</div> <div>The value of any cell defined by RowIdx variable in column A.</div> <div>The value of any cell defined by the ARowIdx variable in column A.</div>
A user needs to change the name of a table to Budget2022 in a sheet. Which part of the selector must the user modify?	<div>Update both the pane ID in line 3 and table name in line 5.</div> <div>Update the pane ID in line 3.</div> <div>Update the table name in line 5.</div>

- A. Mastered
- B. Not Mastered

Answer: A

Explanation:

Questions	Response
A user accidentally changes the name of the Microsoft Excel file to Final_Budget2022.xlsx . Will the selector still work?	<div>Yes</div> <div>No</div>
A Microsoft Excel file contains a worksheet with the name Budget . Will the selector be able to find the worksheet?	<div>Yes</div> <div>No</div>
Which value will be extracted by using this selector?	<div>The value from cell A3.</div> <div>The value of a cell where the ID equals ARowIdx.</div> <div>The value of any cell defined by RowIdx variable in column A.</div> <div>The value of any cell defined by the ARowIdx variable in column A.</div>
A user needs to change the name of a table to Budget2022 in a sheet. Which part of the selector must the user modify?	<div>Update both the pane ID in line 3 and table name in line 5.</div> <div>Update the pane ID in line 3.</div> <div>Update the table name in line 5.</div>

NEW QUESTION 104

- (Exam Topic 3)

You are developing a desktop flow.

You need to include an IF statement that contains AND logic within the flow. Which expression should you use for the IF statement?

A)

IF \$'' '%IsEmpty(Variable1)% AND %IsEmpty(Variable2)%'' = \$'''True'''

B)

IF IsEmpty(IsEmpty(Variable1) AND IsEmpty(Variable2))

C)

IF IsEmpty(Variable1 AND Variable2)

D)

IF (IsEmpty(Variable1) OR IsEmpty(Variable2)) = \$'''True'''

E)

IF (IsEmpty(Variable1) AND IsEmpty(Variable2)) = \$'''True'''

- A. Option A
- B. Option B
- C. Option C
- D. Option D

Answer: C

NEW QUESTION 109

- (Exam Topic 3)

You are developing automation solutions for a company.

You need to select the applicable flow type to automate the following tools and technologies:

- Microsoft Excel
- Desktop application
- File system

Which flow types should you use? To answer, drag the appropriate flow types to the correct automation targets. Each flow type may be used once, more than once, or not at all. You may need to drag the split bar between panes or scroll to view content.

NOTE: Each correct selection is worth one point.

Flow types

Cloud flows only

Desktop flows only

Cloud flows or desktop flows

Answer Area

Automation target

Microsoft Excel

Desktop application

File system

Flow type

Flow type

Flow type

Flow type

- A. Mastered
- B. Not Mastered

Answer: A

Explanation:

Flow types

Cloud flows only

Desktop flows only

Cloud flows or desktop flows

Answer Area

Automation target

Microsoft Excel

Desktop application

File system

Flow type

Cloud flows only

Cloud flows or desktop flows

Desktop flows only

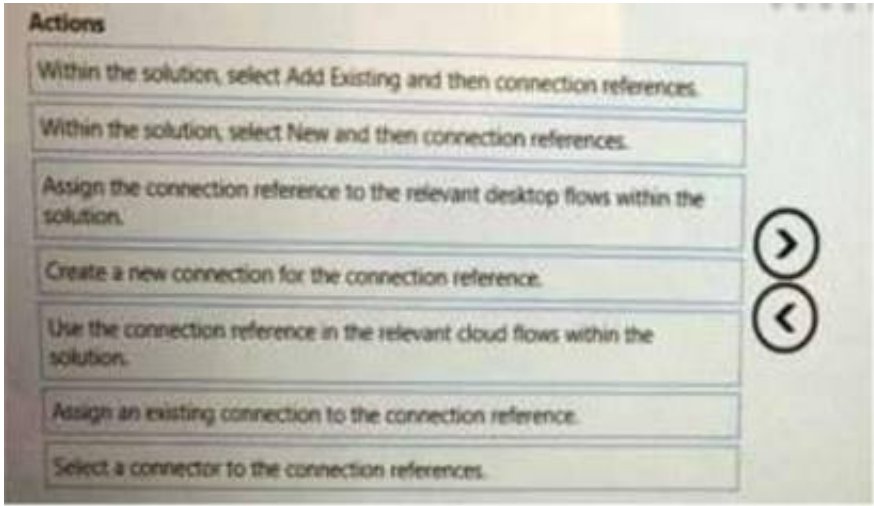
NEW QUESTION 114

- (Exam Topic 3)

You create a solution within a Microsoft Power Platform environment. The environment includes all connections required for the solution.

You need to create a connection reference for the flows.

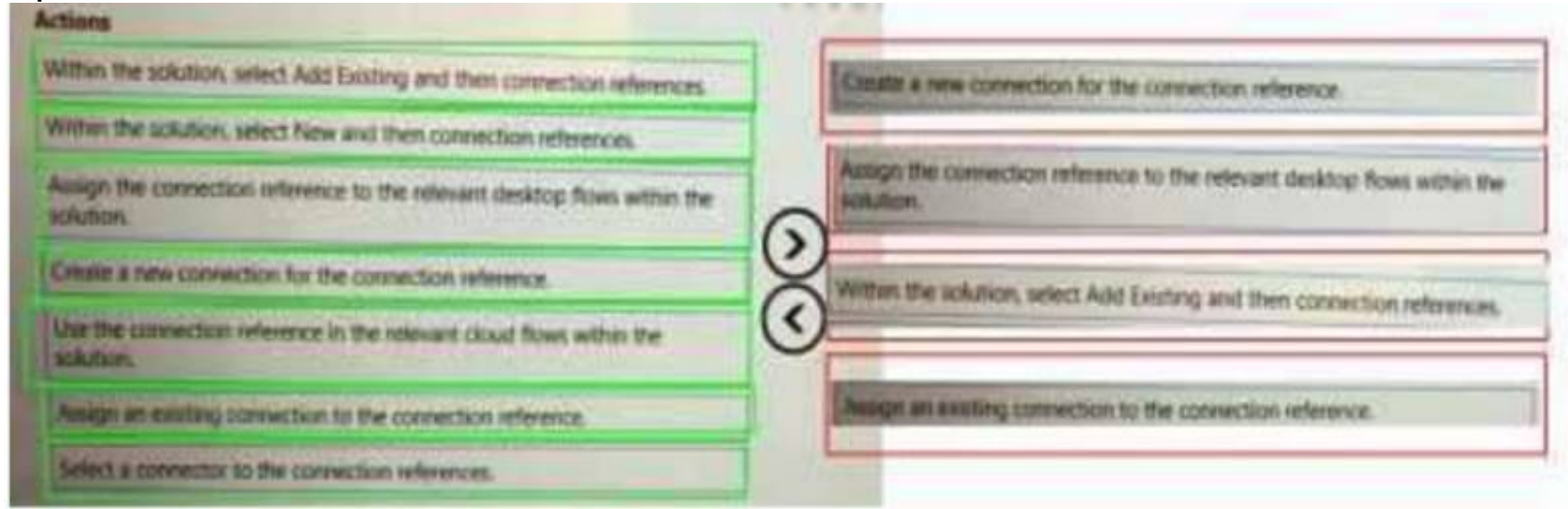
Which four actions should you perform in sequence? To answer, move the appropriate actions from the list of actions to the answer area and arrange them in the order.



- A. Mastered
- B. Not Mastered

Answer: A

Explanation:



NEW QUESTION 119

.....

Thank You for Trying Our Product

We offer two products:

1st - We have Practice Tests Software with Actual Exam Questions

2nd - Questons and Answers in PDF Format

PL-500 Practice Exam Features:

- * PL-500 Questions and Answers Updated Frequently
- * PL-500 Practice Questions Verified by Expert Senior Certified Staff
- * PL-500 Most Realistic Questions that Guarantee you a Pass on Your FirstTry
- * PL-500 Practice Test Questions in Multiple Choice Formats and Updatesfor 1 Year

100% Actual & Verified — Instant Download, Please Click
[Order The PL-500 Practice Test Here](#)