

Exam Questions 350-601

Implementing and Operating Cisco Data Center Core Technologies

<https://www.2passeasy.com/dumps/350-601/>



NEW QUESTION 1

A network administrator must configure an extra keyring in Cisco UCS Manager. The key must provide a high level of encryption and secure authentication when users use the web interface. Which configuration command set must be applied to meet these requirements?

- ☒ **set https keyring kring7984**
set https cipher-suite-mode secure
set https ssl-protocol tls1-2
commit-buffer
- ☐ **set https keyring kring7984**
set https cipher-suite-mode secure
set https tls-protocol tls1-2
commit-buffer
- ☐ **set https keyring kring7984**
set https cipher-suite-mode high
set https ssl-protocol tls1-2#
commit-buffer
- ☐ **set https keyring kring7984**
set https cipher-suite-mode high
set https tls-protocol tls1-2
commit-buffer

- A. Option A
- B. Option B
- C. Option C
- D. Option D

Answer: C

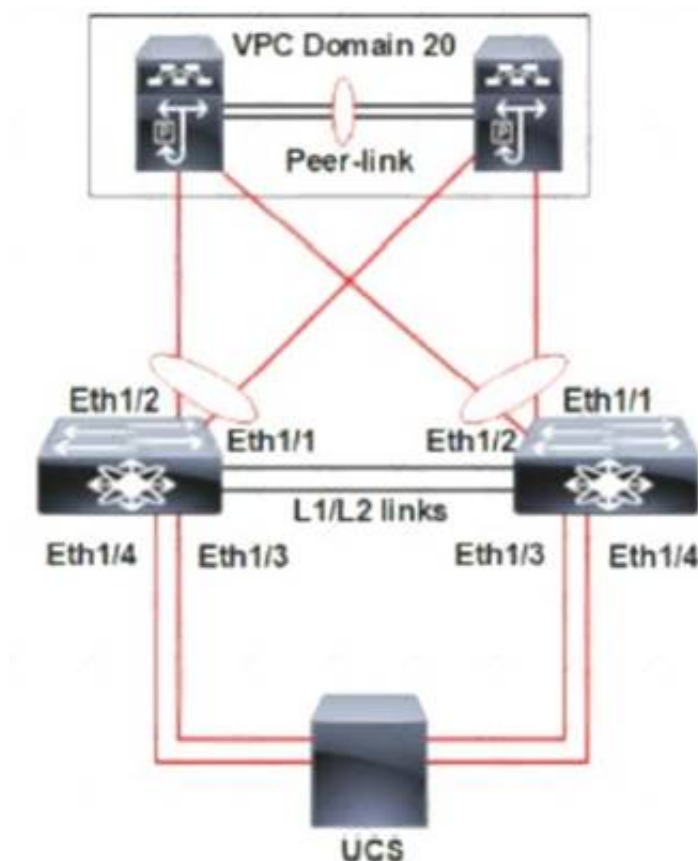
Explanation:

https://www.cisco.com/c/en/us/td/docs/unified_computing/ucs/ucs-manager/CLI-User-Guides/Admin-Managem "cipher-suite-mode secure" is invalid command. "Cipher-suite-mode high" is valid command. "tls-protocol tls1-2" is invalid command. "Ssl-protocol tls1-2" is valid command.

```
UCS-A# scope system
UCS-A /system # scope services
UCS-A /system/services # enable https
UCS-A /system/services* # set https port 443
Warning: When committed, this closes all the web sessions.
UCS-A /system/services* # set https keyring kring7984
UCS-A /system/services* # set https cipher-suite-mode high
UCS-A /system/services* # set https ssl-protocol tls1-2
UCS-A /system/services* # commit-buffer
UCS-A /system/services #
```

NEW QUESTION 2

Refer to the exhibit.



A pair of Cisco Nexus switches form a vPC. A new chassis is added to the pre-existing Cisco UCS domain. A new chassis must be discovered, and all links from the chassis to the LAN network must be established. Which set of actions accomplishes these requirements?

- ☐ Set the chassis discovery policy action to four links.
Configure Eth1/3 and Eth1/4 as server ports.
Acknowledge the chassis.
- ☒ Set the chassis discovery policy action to four links.
Configure Eth1/1 and Eth1/2 as uplink Fibre Channel ports.
Set the link group preference to None.
- ☐ Set the chassis discovery policy action to one link.
Configure Eth1/1 and Eth1/2 as uplink Ethernet ports.
Set the link group preference to Port Channel.
- ☐ Set the chassis discovery policy action to one link.
Configure Eth1/3 and Eth1/4 as server ports.
Acknowledge the chassis.

- A. Option A
- B. Option B
- C. Option C
- D. Option D

Answer: C

NEW QUESTION 3

A company is investigating different options for IT automation tools. The IT team has experience with python programming language and scripting using a declarative language. The proposed tool should be easy to set up and should not require installing an agent on target devices. The team will also need to build custom modules based on the python programming language to extend the tools functionality. Which automation tool should be used to meet these requirements?

- A. Puppet
- B. Ansible
- C. NX-API
- D. Chef

Answer: B

NEW QUESTION 4

What is a feature of NFS?

- A. role-based access control
- B. Kerberos-based security model
- C. block-based file access
- D. zone-based access control

Answer: B

Explanation:

<https://www.cisco.com/c/en/us/support/docs/security-vpn/kerberos/16087-1.html#modifiednfs>

Kerberos Security Implications of the Modified NFS

This implementation is not completely secure. For starters, user data is still sent across the network in an unencrypted, and therefore interceptable, form. The low-level, per-transaction authentication is based on a <CLIENT-IP-ADDRESS, CLIENT-UID> pair provided unencrypted in the request packet. This information could be forged and thus security compromised. However, it should be noted that only while a user is actively using her/his files (that is, while logged in) are valid mappings in place and therefore this form of attack is limited to when the user in question is logged in. When a user is not logged in, no amount of IP address forgery will permit unauthorized access to her/his files.

NEW QUESTION 5

What happens to the default host firmware policy after a Cisco UCS Manager upgrade?

- A. It is updated to contain the firmware entries of all the components
- B. It is replaced by a new default policy without any firmware entries.
- C. It is assigned to all the service profiles that include a host firmware policy.
- D. It is set to match the host firmware policy.

Answer: B

Explanation:

https://www.cisco.com/c/en/us/td/docs/unified_computing/ucs/ucs-manager/GUI-User-Guides/Firmware-Mgmt/

NEW QUESTION 6

Which two protocols are used by the NFSv4 protocol? (Choose two.)

- A. FCP
- B. TCP
- C. UDP
- D. Ethernet
- E. IP

Answer: BE

NEW QUESTION 7

The engineer must configure SPAN on a cisco Nexus 5000 Series switch to get a capture of the traffic from these applications for an in-depth packet analysis. Which two characteristics must be considered? (Choose two.)

- A. The Ethernet, FC, vFC, port channel, SAN port channel can be used as SPAN source ports.
- B. The rx/tx option is available for VLAN or VSAN SPAN sessions.
- C. SPAN source port can be monitored in multiple SPAN sessions.
- D. Only Ethernet, FC, vFC, port channel port types can be a destination SPAN port.
- E. A SPAN source port cannot be a destination SPAN port.

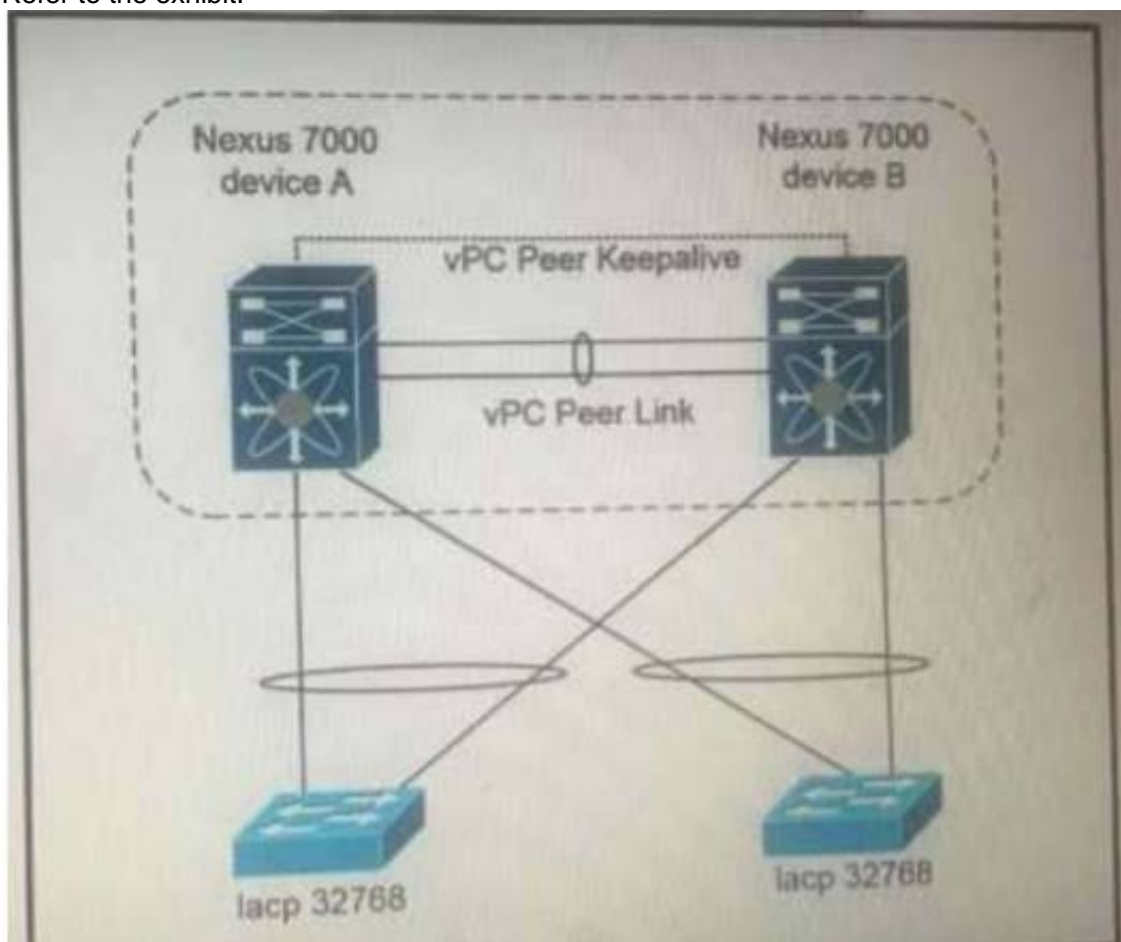
Answer: AE

Explanation:

https://www.cisco.com/en/US/docs/switches/datacenter/nexus5000/sw/configuration/guide/cli_rel_4_1/Cisco_N

NEW QUESTION 8

Refer to the exhibit.



Which configuration ensure that the cisco Nexus 7000 series switches are the primary devices for LACP?

- A.

```
N7K_A(config-vpc-domain)# system-priority 4000
N7K_B(config-vpc-domain)# system-priority 4000
```
- B.

```
N7K_A(config-vpc-domain)# system-priority 100
N7K_B(config-vpc-domain)# system-priority 200
```
- C.

```
N7K_A(config-vpc-domain)# system-priority 32768
N7K_B(config-vpc-domain)# system-priority 32768
```
- D.

```
N7K_A(config-vpc-domain)# role priority 1
N7K_B(config-vpc-domain)# role priority 2
```

- A. Option A
- B. Option B
- C. Option C
- D. Option D

Answer: C

NEW QUESTION 9

A server engineer wants to control power usage on a Cisco UCS C-Series rack server down to the component level. Which two components support specific power limits? (Choose two.)

- A. storage controller
- B. network controller
- C. processor
- D. graphic card
- E. memory

Answer: CE

Explanation:

https://www.cisco.com/c/en/us/td/docs/unified_computing/ucs/c/sw/gui/config/guide/4_1/b_Cisco_UCS_C-serie

NEW QUESTION 10

Refer to Exhibit:

```
n9k2# guestshell
[guestshell@guestshell ~]$ python
Python 2.7.5 (default, Jun 17 2014, 18:11:42)
[GCC 4.8.2 20140120 (Red Hat 4.8.2-16)] on linux2
Type "help", "copyright", "credits" or "license" for more information.
>>>
```

An engineer must use the python module in the guest shell of the Cisco Nexus 9000 Series switch to shutdown port Ethernet 1/4 Which command set will accomplish this?

- ☒ from cli import *
cli("conf t")
cli("interface eth1/4")
cli("shutdown")
- ☐ from cli import *
cli("conf t ; interface eth1/4 ; shut")
- ☐ from cisco import cli
cli("conf t ; interface eth1/4")
cli("shutdown")
- ☐ from cisco import cli
cli("conf t" ; "interface eth1/4" ; "shut")

- A. Option A
- B. Option B
- C. Option C
- D. Option D

Answer: B

Explanation:

When two or more commands are run individually, the state is not persistent from one command to subsequent commands.

In the following example, the second command fails because the state from the first command does not persist for the second command.

```
>>> cli("conf t")
>>> cli("interface eth4/1")
```

When two or more commands are run together, the state is persistent from one command to subsequent commands.

In the following example, the second command is successful because the state persists for the second and third commands.

```
>>> cli("conf t ; interface eth4/1 ; shut")
```

Note: Commands are separated with " ; " as shown in the example. The semicolon (;) must be surrounded with single blank characters.

https://www.cisco.com/c/en/us/td/docs/switches/datacenter/nexus9000/sw/7-x/programmability/guide/b_Cisco_Nexus_9000_Series_NX-OS_Programmability_Guide_7x/Python_API.html https://www.ciscolive.com/c/dam/r/ciscolive/apjc/docs/2016/pdf/DEVNET-1077.pdf

NEW QUESTION 10

An engineer is configuring AAA authentication on an MDS 9000 switch. The LDAP server is located under the IP 10.10.2.2. The data sent to the LDAP server should be encrypted. Which command should be used to meet these requirements?

- A. ldap-server host 10.10.2.2 enable-ssl
- B. ldap-server 10.10.2.2 port 443
- C. ldap server host 10.10.2.2 key SSL_KEY
- D. ldap-server 10.10.2.2 key SSL_KEY

Answer: A

NEW QUESTION 11

Drag and drop the technologies from the left onto the description on the right.

NFSv2	uses client machine authentication
Kerberos	uses users authentication
NFSv4	authenticates clients and servers in NFSv4
RADIUS	authenticates clients to corporate directory systems

- A. Mastered
- B. Not Mastered

Answer: A

Explanation:

NFSv2 NFSv4
Kerberos RADIUS

NEW QUESTION 16

An engineer upgrades the bash on the Cisco Nexus 9000 Series Switch.

```
guestshell:~$ sudo [MISSING_COMMAND] /bootflash/bash-4.2_8642092948678a-r8x86_64.rpm.rpm
Preparing...
##### [100%]
1:bash ##### [100%]
update-alternatives: Linking //bin/sh to /bin/bash
```

Which command must be used to complete the task?

- A. rpm -qa
- B. rpm -Uhv
- C. upgrade -U
- D. update -vh

Answer: B

NEW QUESTION 17

A Cisco MDS 9000 Series Switch is configured for SAN Analytics and SAN Telemetry Streaming. An engineer must enable analytics for NVMe on interfaces in the range of fc1/1-12. Due to a large amount of traffic generated in the SAN environment, the data must be collected at regular intervals of 60 seconds from ports fc 1-12 and then for ports fc13-24 for the next 60 seconds. Ports in the range fc4/13-14 were already enabled for analytics. Which set of commands must be used to meet these requirements?

- ☒ interface fc1/1-12
port-sampling module 4 size 12 interval 60
analytics nvme
- ☐ interface fc1/1-12
port-sampling module 4 size 12 interval 60000
analytics type fc-scsi
- ☐ analytics port-sampling module 4 size 12 interval 60000
- ☐ interface fc1/1-12
analytics fc-scsi
analytics fc-nvme
- ☐ analytics port-sampling module 4 size 12 interval 60
interface fc1/1-12
analytics type fc-nvme

- A. Option A
- B. Option B
- C. Option C
- D. Option D

Answer: D

NEW QUESTION 22

An engineer needs to install a new package on a Cisco Nexus 9000 Series Switch. What is the impact of running the install commit <filename> command on the switch?

- A. The switch is restarted after the upgrade is complete
- B. The package is used after the switch is restarted.
- C. The previous package that was in use is deleted from bootflash.
- D. The package is used in the running configuration.

Answer: B

NEW QUESTION 24

Refer to the exhibit.

```

Enter the configuration method. (console/gui) ? console

Enter the setup mode; setup newly or restore from backup.
(setup/restore) ? restore

NOTE:
  To configure Fabric interconnect using a backup file on
a remote server, you will need to setup management
interface.
  The management interface will be re-configured (if
necessary), based on information stored in the backup file.

Continue to restore this Fabric interconnect from a backup
file (yes/no) ? yes

Physical Switch Mgmt0 IPv4 address : 192.168.10.10
Physical Switch Mgmt0 IPv4 netmask : 255.255.255.0
IPv4 address of the default gateway : 192.168.10.1
Enter the protocol to get backup file (scp/ftp/tftp/sftp)
? scp
Enter the IP address of backup server: 20.10.20.10
Enter fully qualified backup file name: Backup.bak
Enter user ID: user
Enter password:
Retrieved backup configuration file.
Configuration file - Ok

```

Which type of backup is required to restore a Cisco UCS configuration?

- A. system configuration
- B. all configuration
- C. logical configuration
- D. full state

Answer: A

Explanation:

https://www.cisco.com/c/en/us/td/docs/unified_computing/ucs/sw/cli/config/guide/1-0-2/b_CLI_Config_Guide_

The following example restores a system configuration from the Backup.bak file, which was retrieved from the 20.10.20.10 backup server using FTP:

```
Enter the configuration method. (console/gui) ? console

Enter the setup mode; setup newly or restore from backup. (setup/restore) ? restore

NOTE:
  To configure Fabric interconnect using a backup file on a remote server,
  you will need to setup management interface.
  The management interface will be re-configured (if necessary),
  based on information stored in the backup file.

Continue to restore this Fabric interconnect from a backup file (yes/no) ? yes

Physical Switch Mgmt0 IPv4 address : 192.168.10.10

Physical Switch Mgmt0 IPv4 netmask : 255.255.255.0

IPv4 address of the default gateway : 192.168.10.1

Enter the protocol to get backup file (scp/ftp/tftp/sftp) ? scp
Enter the IP address of backup server: 20.10.20.10
Enter fully qualified backup file name: Backup.bak
Enter user ID: user
Enter password:
  Retrieved backup configuration file.
  Configuration file - Ok

Cisco UCS 6100 Series Fabric Interconnect
UCS-A login:
```

NEW QUESTION 26

An engineer must configure a Cisco MDS 9000 Series Switch for traffic analysis from the storage array. The storage array is connected to the interface fc2/1 in VSAN 10 and the traffic analyzer to fc4/2. The capture file must include ingress and egress traffic between the switch and the storage array. Also, only traffic in VSAN 10 must be captured. Which configuration set meets these requirements?

A)

```
interface fc4/2
  switchport mode auto
  no shutdown
!
span session 1
  source interface fc2/1 rx
  destination interface fc4/2
  source filter vsan 10
  no suspend
```

B)

```
interface fc4/2
  switchport mode trunk
  switchport trunk allow vsan 10
  no shutdown
!
span session 1
  source interface fc2/1 tx
  destination interface fc4/2 rx
  no suspend
```

C)


```
interface fc4/2
  switchport mode SD
  no shutdown
!
span session 1
  source interface fc2/1
  destination interface fc4/2
  source filter vsan 10
```

D)

```
interface fc4/2
  switchport mode ST
  no shutdown
!
span session 1
  source interface fc2/1
  destination interface fc4/2
  source filter vsan 10
```

- A. Option A
- B. Option B
- C. Option C
- D. Option D

Answer: A

NEW QUESTION 28

Which configuration statically assigns VSAN membership to a virtual Fibre Channel interface?

- A. switch(config-vsan-cb)># vsan 100 bind interface fc 3/1
- B. switch<config-vsan-db)# vsan 100 bind interface vfc 31
- C. switch(config-vsan-db)># vsan 100 fc 3/1
- D. switch(config-vsan-db)# vsan 100 interface vfc 31

Answer: D

Explanation:

<https://www.cisco.com/c/en/us/td/docs/switches/datacenter/nexus5000/sw/configuration/guide/cli/CLIConfigurationGuide/vsan.html>

NEW QUESTION 33

What occurs when running the command install deactivate <filename> while a software maintenance upgrade is performed on a Cisco Nexus 9000 Series switch?

- A. The current set of packages is committed.
- B. The package is removed from the switch.
- C. The package features for the line card are disabled.
- D. The current upgrade stops.

Answer: C

NEW QUESTION 35

A network engineer connects the CNA interface of a server to a switch. The switch must bring down all of the VLANs on the interface that are not enabled for FCoE, but the VLANs that are enabled for FCoE should continue to carry SAN traffic without interruption. Which configuration should be applied to the switch to achieve this objective?

- A. switch(config)# interface Ethernet 2/1 switch(config-if)# shutdown lan
- B. switch(config)# interface vfc 2 switch(config-if)# shutdown lan
- C. switch(config)# Interface Ethernet vfc 2 switch(config-if)# shutdown force
- D. switch(config)# interface Ethernet 2/1 switch(config-if)# shutdown force

Answer: A

NEW QUESTION 37

Which two actions are needed to configure a single Cisco APIC controller for Cisco ACI fabric for the first time? (Choose two.)

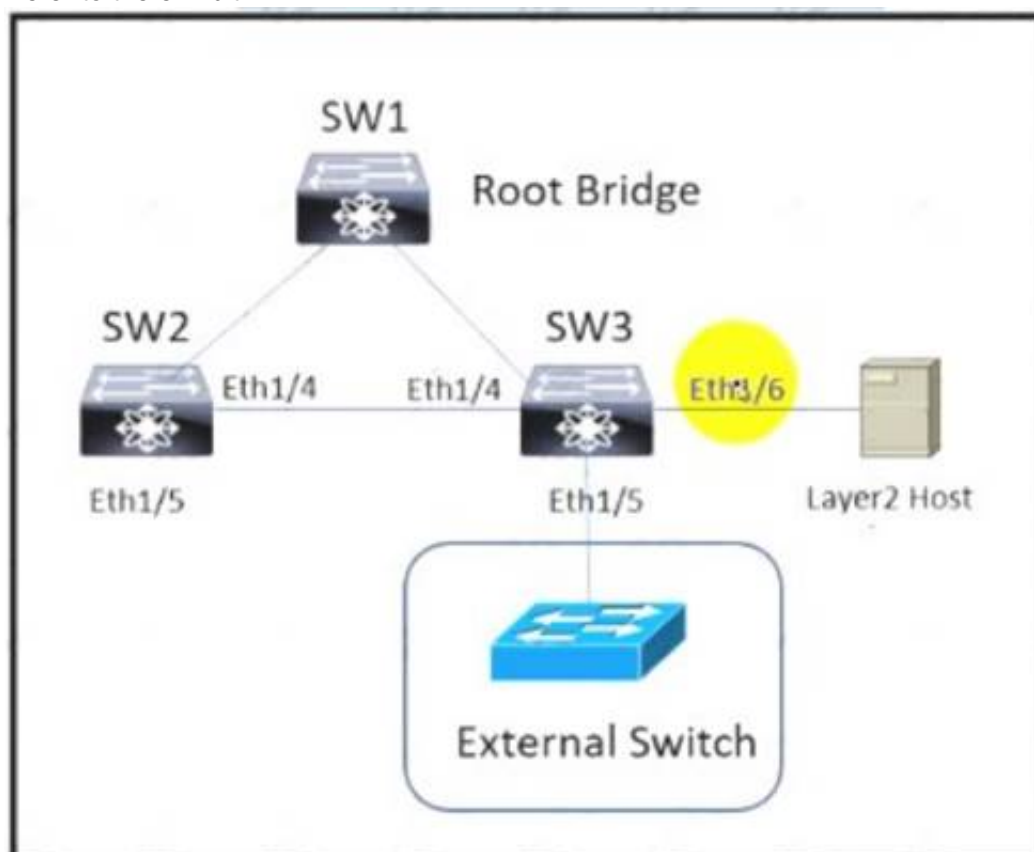
- A. Register the APIC that is connected to the switch.
- B. Configure the first Cisco APIC controller

- C. Configure the leaf switch where the Cisco APIC is connected, using CLI to allow APIC connectivity
- D. Register the switches that are discovered through LLDP.
- E. Register all leaf and spine switches

Answer: AE

NEW QUESTION 39

Refer to the exhibit.



The Cisco Nexus Series Switches SW1, SW2, and SW3 are connected via Layer 2 copper interfaces. An engineer implements loop prevention standard IEEE 802.1w on each VLAN to provide faster recovery from network changes or failures. The Implementation has these requirements

- Interfaces that are connected to Layer 2 hosts must not receive STP BPDUs.
- The implementation must detect unidirectional links due to one-way traffic twisted-pair links
- Bridge assurance must be enabled between SW2 and SW3
- The Layer 2 domain must be protected from superior BPDUs that arrive from external switches.

Drag and drop the code snippets from the right onto the blanks in the code on the left to complete the configuration for SW3. Not all code snippets are used.

```

1 SW3 configuration
interface ethernet 1/4
  spanning-tree port type
  udid
interface ethernet 1/5
  spanning-tree guard
interface ethernet 1/6
  spanning-tree port type
  
```

- edge
- aggressive
- normal
- network
- root
- bpdud

- A. Mastered
- B. Not Mastered

Answer: A

Explanation:

Network Aggressive Bpdu
edge

NEW QUESTION 40

An engineer must configure a named VSAN when the fabric interconnect is in Fibre Channel switch mode The VSAN must meet these requirements:

- Named VSAN must be called "VSAN 10".
- VSAN ID must be 10.
- FCoE ID must be 20.
- VSAN 10 must be attached to port 2 in slot 1.

Which command set configures a VSAN when the fabric interconnect is in Fibre Channel switch mode?

- ☒ UCS-A# scope fc-storage
 UCS-A/fc-storage# create vsan VSAN10 10 20
 UCS-A /fc-storage/vsan # create member-port fcoe a 1 2
 UCS-A /fc-storage/vsan/member-port* # commit-buffer
- ☐ UCS-A# scope fc-traffic-mon
 UCS-A/fc-storage# create vsan VSAN10 20 10
 UCS-A /fc-storage/vsan # create member-port fcoe a 2 1
 UCS-A /fc-storage/vsan/member-port* # commit-buffer
- ☐ UCS-A# scope eth-storage
 UCS-A/fc-storage# create vsan VSAN10 10 20
 UCS-A /fc-storage/vsan # create member-port fcoe a 2 1
 UCS-A /fc-storage/vsan/member-port* # commit-buffer
- ☐ UCS-A# scope fc-uplink
 UCS-A/fc-storage# create vsan VSAN10 20 10
 UCS-A /fc-storage/vsan # create member-port fcoe a 1 2
 UCS-A /fc-storage/vsan/member-port* # commit-buffer

- A. Option A
- B. Option B
- C. Option C
- D. Option D

Answer: A

NEW QUESTION 42

An engineer must configure SAN connectivity in Cisco UCS manager. The requirement is to specify the WWPN of the storage array and set the zoning type to single initiator multiple targets. The engineer must also configure interrupt handling and queues of the vHBA interface. Which two Cisco UCS policies should be used to configure the settings? (Choose two.)

- A. storage connection policy
- B. SAN connectivity policy
- C. vHBA policy
- D. Fibre Channel adaptor policy
- E. boot policy

Answer: AD

NEW QUESTION 44

An engineer must perform a backup operation of the Cisco UCS system. The backup must be transferred to a secure location using UDP and must contain information about VLANs, VSANs, and other policies. Also, the operations team requires the backup file to be in a human-readable format. Which configuration set meets these requirements?

- A. Type: System configuration Protocol: SCP
- B. Type: Logical configuration Protocol: TFTP
- C. Type: All configuration Protocol: FTP
- D. Type: Full state Protocol: SFTP

Answer: B

NEW QUESTION 49

An engineer needs to connect Cisco UCS Manager to an external storage array. Due to budget limitations, the engineer must connect a Cisco UCS manager directly to an FC storage port. Which two actions must be taken to complete this connection? (Choose two)

- A. Configure the fabric interconnect in FC switch mode
- B. Create a storage connection policy
- C. Set FC zoning to disabled when creating the VSAN
- D. Configure the fabric interconnect in end host mode
- E. Create the required VSAN in the SAN cloud

Answer: AC

NEW QUESTION 54

A customer has a requirement for an automation solution that supports periodically acquiring configuration from a centralized server and aligning UCS servers to their desired state. Which open-source tool meets these requirements?

- A. SaltStack
- B. Terraform

- C. Puppet
- D. Kubemetes

Answer: C

Explanation:

"Overview of Puppet architecture: [...] After it receives a catalog, the Puppet agent applies the catalog by checking each resource that the catalog describes. If it finds any resources that are not in their desired state, it makes any changes necessary to correct them."

https://www.cisco.com/c/dam/en/us/products/collateral/servers-unified-computing/ucs-c-series-rackservers/whitepaper_c11-740103.pdf

<https://www.cisco.com/c/dam/en/us/products/collateral/servers-unified-computing/ucs-devops-integration-sol-br>

from DCCOR book under Puppet section The operation of the Puppet agent involves periodically connecting to the Puppet master, which in turn compiles and sends a configuration manifest to the agent. The agent reconciles this manifest with the current state of the node and updates state that is based on differences.

NEW QUESTION 59

An engineer must add a new VRF (DC DC) to the network that runs with Multiprotocol Border Gateway Protocol (MP-BGP) and EVPN. The requirement for the new VRF is to allow communication of network

prefixes between PE1 and PE2. Which two sets of steps should be taken to complete the VRF configuration? (Choose two)

☒

PE1

```

vrf context DC1DC
rd 233:1
address-family ipv4 unicast
route-target import 233:1
route-target export 233:2
                    
```

PE2:

```

vrf context DC1DC
rd 233:2
address-family ipv4 unicast
route-target import 233:1
route-target export 233:2
                    
```

☐

PE1:

```

vrf context DC1DC
rd 233:1
address-family ipv4 unicast
route-target import 233:1
route-target export 233:2
                    
```

PE2:

```

vrf context DC1DC
rd 233:1
address-family ipv4 unicast
route-target import 233:2
route-target export 233:1
                    
```

☐

PE1

```

vrf context DC1DC
rd 233:1
address-family ipv4 unicast
route-target import 233:1
route-target export 233:1
                    
```

PE2:

```

vrf context DC1DC
rd 233:1
address-family ipv4 unicast
route-target import 233:2
route-target export 233:2
                    
```

☐

PE1

```

vrf context DC1DC
rd 233:1
address-family ipv4 unicast
route-target import 233:1
route-target export 233:1
                    
```

PE2:

```

vrf context DC1DC
rd 233:2
address-family ipv4 unicast
route-target import 233:1
route-target export 233:1
                    
```

☐

PE1

```

vrf context DC1DC
rd 233:1
address-family ipv4 unicast
route-target import 233:1
route-target export 233:2
                    
```

PE2:

```

vrf context DC1DC
rd 233:1
address-family ipv4 unicast
route-target import 233:2
route-target export 233:2
                    
```

- A. Option A
- B. Option B
- C. Option C
- D. Option D
- E. Option E

Answer: DE

NEW QUESTION 63

Which two firmware packages are included in the Cisco UCS C-Series Rack-Mount UCS-Managed Server Software bundle? (Choose two.)

- A. system
- B. third-party
- C. PSU
- D. CIMC
- E. BIOS

Answer: DE

Explanation:

https://www.cisco.com/c/en/us/td/docs/unified_computing/ucs/ucs-manager/GUI-User-Guides/Firmware-Mgmt/

Cisco UCS C-Series Rack-Mount UCS-Managed Server Software Bundle

This bundle includes the following firmware images that are required to update components on rack-mount servers that have been integrated with and are managed by Cisco UCS Manager:

- CIMC firmware
- BIOS firmware
- Adapter firmware
- Storage controller firmware

NEW QUESTION 64

Due to a major version change, an engineer must perform a software upgrade on a Cisco Nexus Series switch. Which two technologies can be implemented to reduce disruptions to the network during the upgrade? (Choose two.)

- A. MLAG
- B. HSRP
- C. PAgP
- D. VDC
- E. vPC

Answer: BE

NEW QUESTION 69

An engineer must configure Cisco Nexus 9000 Series Switches for Cisco UCS Director integration. The configuration must enable automated onboarding of the switches as they come online. For security purposes, the switches must have the bare minimum of connection methods enabled. The connection protocol must allow authentication through credentials. Which protocol must be configured on the switches to allow automated onboarding?

- A. SNMP
- B. Telnet
- C. SSH
- D. HTTPS

Answer: C

NEW QUESTION 71

An engineer is implementing traffic monitoring for a server vNIC that is configured with fabric failover enabled. The requirement is for the traffic to be sent to an analyzer, even during a failure of one of the fabric interconnects. The analyzer is connected to unconfigured Ethernet ports on both fabric interconnects. Which configuration accomplishes this task?

- A. Create two traffic monitoring sessions with different names, one per fabric. Connect the analyzer connected to FI-B as the destination for both monitoring sessions.
- B. Create two traffic monitoring sessions with the same name, one per fabric. Connect an analyzer on each FI as the destination for the monitoring session local to that FI.
- C. Create two traffic monitoring sessions with the same name, one per fabric. Connect the analyzer connected to FI-A as the destination for both monitoring sessions.
- D. Create two traffic monitoring sessions with different names, one per fabric. Connect an analyzer on each FI as the destination for the monitoring session local to the FI.

Answer: A

NEW QUESTION 74

Refer to the exhibit

```
switch1#show run interface Vlan 10

interface Vlan10
  description Service Datacenter-Rack-A
  ip address 209.165.200.225 255.255.255.224
!
end

switch1#
```

An engineer must mirror the traffic on a switch. The engineer locates the server port that requires monitoring on switch1, but the packet sniffer is on switch2. The engineer must configure the source IP address on switch1. Which command accomplishes this goal?

- A. monitor session 10 type erspan-source
- B. monitor erspan origin ip-address 209.165.200.225

- C. source ip 209.165.200.225
- D. source interface vbn512

Answer: B

NEW QUESTION 79

Refer to the exhibit.

```

ACI-Leaf1# show ip route vrf DATACENTER:DC
10.20.1.0/24, ubest/mbest: 1/0, attached, direct, pervasive
  *via 10.0.8.65%overlay-1, [1/0], 4w3d, static
172.16.100.0/24, ubest/mbest: 1/0
  *via 10.1.168.95%overlay-1, [200/5], 3wod, bgp-132, internal, tag 132 (mpls-vpn)
172.16.99.0/24, ubest/mbest: 1/0
  *via 10.0.1.14, [20/0], 3wod, bgp-132, external, tag 200
    
```

Which two statements about the routing table of the leaf switch are true? (Choose two.)

- A. The next hop 10.0.1.14 for route 172.16.99.0/24 is the TEP address of a border leaf in ACI.
- B. 172.16.100.0/24 is a BD subnet in ACI.
- C. The next hop 10.0.8.65 for route 10.20.1.0./24 is the TEP address of a border leaf in ACI.
- D. The next hop 10.1.168.95 for route 172.16.100.0/24 is the TEP address of a border leaf in ACI.
- E. 10.20.1.0./24 is a BD subnet in ACI.

Answer: DE

NEW QUESTION 80

Which command reduces the amount of time it takes to complete the ISSU on a Cisco Nexus 7000 series switch that has dual supervisor modules and two I/O modules?

- A. install all kickstart <image>system<image>parallel
- B. install all epld bootflash:<image>
- C. install all epld bootflash:<image>
- D. install all kickstart<image>system<image>

Answer: A

Explanation:

Graphical user interface, text, application Description automatically generated

Parallel Upgrade

Parallel Upgrade with I/O Modules

Starting with Cisco NX-OS Release 5.2(1), multiple linecards can be simultaneously upgraded, and the infrastructure support is available. This decreases the ISSU time when compared with an ISSU upgrade that is done serially (one card at a time).

To start a parallel upgrade, use the following command: **install all kickstart image system image parallel**

Up to three linecards can be upgraded in parallel with this command. During the upgrade process, the upgrade of the linecards is displayed in the output as follows:

```

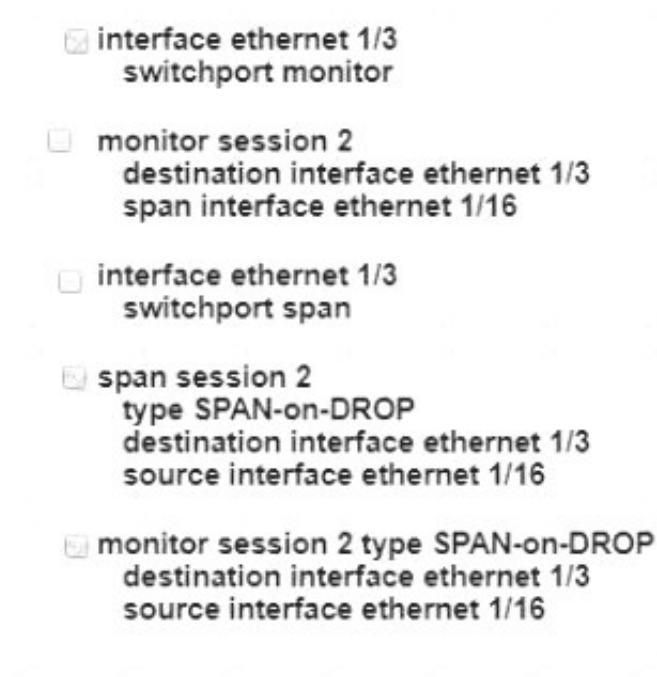
Non-disruptive upgrading.
[#          ] 0%
Module 5 upgrade completed successfully.

Module 3 upgrade completed successfully.
    
```

https://www.cisco.com/c/en/us/td/docs/switches/datacenter/nexus7000/sw/upgrade/guide/cisco_nexus7000_software_upgrade_and_downgrade_guide_8x.html
https://www.cisco.com/c/en/us/td/docs/switches/datacenter/sw/7_x/nx-os/upgrade/guide/b_Cisco_Nexus_7000_Series_NX-OS_Software_Upgrade_and_Downgrade_Guide_Release_7-x.html#d54e307a1635

NEW QUESTION 81

The Cisco Nexus 5600 Series Switch experiences occasional packet drops on interface ethernet 1/16. An engineer wants to implement a SPAN session to investigate the issue further. The network analyzer to which the packets must be directed is located on interface 1/3. The analyzer is limited on disk space available for traffic capture, so the Nexus switch should send only the relevant data. Which two command sets configure the SPAN session that meets these requirements? (Choose two.)



- A. Option A
- B. Option B
- C. Option C
- D. Option D
- E. Option E

Answer: AE

Explanation:

<https://www.cisco.com/c/en/us/products/collateral/switches/nexus-5000-series-switches/white-paper-c11-73302> The information to be sent is regarding dropped packets only.

This configuration creates a SPAN session with type SPAN-on-DROP. In the following example, the source interface, where congestion may be present, is port e3/1. The destination port is e3/2, which must be in switchport monitor mode.

```
switch(config)# monitor session <session_number> type SPAN-on-DROP
switch(config-SPAN-on-DROP)# source interface e3/1
switch(config-SPAN-on-DROP)# destination interface e3/2
```

NEW QUESTION 86

A company must security harden its Cisco UCS C-Series servers. The security policy requires all out-of-band management to meet these requirements

- > It must encrypt all traffic
- > It must use nondefault ports
- > It must provide private administrative sessions Which Cisco IMC corffiguraton meets the requirements?



- A. Option A
- B. Option B
- C. Option C
- D. Option D

Answer: D

NEW QUESTION 90

AN engineer is asked to modify an overridden policy by changing the number of FCNS database entries to 1500 and then generable a massage. What configuration will accomplish this task?

- A. event manager applet fcns_policy event fcns entries max-per-switch 1500
action 1.0 syslog priority warnings msg FCNS DB entries have reached the EEM limit
action 2.0 policy-default
- B. event manager applet fcns_policy override _fcns_entries_max_per_switch
action 1.0 syslog priority errors "CNS DB entries have reached the EEM limit"
action 2.0 policy-default
- C. event manager applet fcns_policy override _fcns_entries_max_per_switch
event fcns entries max-per-switch 1500
action 1.0 syslog priority warnings msg FCNS DB entries have reached the EEM limit
- D. event manager applet fcns_policy action 1.0 syslog priority warnings msg FCNS DB entries have reached the EEM limit
action 2.0 event-default

- A. Option A
- B. Option B
- C. Option C
- D. Option D

Answer: C

Explanation:

The following example modifies an overridden policy by changing the number of FCNS database entries to 1500. It also generates both the configured and the default syslog messages of the default system policy event manager applet fcns_policy override fcns_entries_max_per_switch
event fcns entries max-per-switch 1500 action 1.0 syslog priority warnings msg FCNS DB entries have reached the EEM limit.

NEW QUESTION 92

An engineer configures the properties of a cisco UCS cisco integrated Management controller network adapter for a standalone cisco C-Series server. The Fallback Timeout in the vNIC was set to 600. When the failure occurs. The secondary must be used and then fallback when the primary interface becomes available again. Which action be taken to meet these requirements?

- A. Set default VLAN on the adapters.
- B. Increase Cos to 6.
- C. Disable VNTAG mode.
- D. Enable Uplink failover.

Answer: D

Explanation:

Enable Uplink Failover check box - Check this box if traffic on this vNIC should fail over to the secondary interface if there are communication problems. VNTAG mode is required for this option.

Failback timeout field - After a vNIC has started using its secondary interface, this setting controls how long the primary interface must be available before the system resumes using the primary interface for the vNIC. Enter a number of seconds between 0 and 600. VNTAG mode is required for this option.

https://www.cisco.com/en/US/docs/unified_computing/ucs/c/sw/gui/config/guide/1.5/b_Cisco_UCS_C-series_G

NEW QUESTION 96

Refer to the exhibit.

```
OTV-Site1# show otv
OTV Overlay Information
Site Identifier 0000.0000.0111
Overlay interface Overlay200
VPN name: Overlay200
VPN state: UP
Extended vlans: 178 2500-2563 (Total:65)
Join interface(s): Eth1/2 (20.1.1.1)
Site vlan: 1999 (up)
AED-Capable: Yes
Capability: Unicast-Only
Is Adjacency Server: Yes
Adjacency Server(s): 20.1.1.1/20.2.1.1
```

A network engineer is setting up a multihomed OTV network. The first site has been set up with a primary and secondary adjacency server. Which configuration must be added on the remote OTV AEDs site?

- A. interface Overlay200otv join-interface Ethernet1/2 otv extend-vlan 178, 2500-2563otv use-adjacency-server 20.1.1.1 unicast-only
 B. interface Overlay200otv join-interface Ethernet1/2 otv extand-vlan 178, 2500-2563otv adjacency-server unicast-only
 C. interface Overlay200otv join-interface Ethernet1/2 otv extend-vlan 178, 2500-2563
 D. interface Overlay200otv join-interface Ethernet1/2 otv extend-vlan 178, 2500-2563otv use-adjacency-server 20.1.1.1 20.2.1.1 unicast-only

Answer: D

NEW QUESTION 97

Refer to the exhibit.

```
show install all impact epld bootflash:n9000-epld.6.1.2.I3.1.img
```

What is the outcome of this command when the EPLD is updated on a Cisco Nexus 9000 series switch?

- A. displays the compatibility of the EPLD upgrade and the image in the bootflash
 B. shows a simulated upgrade of the EPLD
 C. upgrades the EPLD on the switch disruptively
 D. displays the impact of the upgrade on the operation of the switch

Answer: D

Explanation:

You can use the show install impact epld bootflash: command to determine whether the EPLDs can be upgraded for all the modules or for specific modules on a switch. This command indicates the current EPLD images, new EPLD images, and whether the upgrades would be disruptive to switch operations. <https://www.cisco.com/c/en/us/td/docs/switches/datacenter/nexus9000/sw/6-x/epld/n9k-epld-rn-61.html>

NEW QUESTION 101

Drag and drop the characteristics from the left onto the correct storage systems on the right.

expensive and complex to manage	NAS <div></div> <div></div> <div></div>
moderately expensive and simple to configure	
most resilient, highly scalable, and high-performance storage	
appliance providing file system access	SAN <div></div> <div></div>
lacks scalability, performance, and advanced features	

- A. Mastered
 B. Not Mastered

Answer: A

Explanation:

Graphical user interface Description automatically generated with medium confidence
 2,4,5 – NAS 1,3 - SAN

NEW QUESTION 106

Refer to the exhibit.

```
restart pim
```

Which result of running the command is true?

- A. The PIM database is deleted.
 B. Multicast traffic forwarding is suspended.
 C. PIM join messages are suspended.
 D. MRIB is flushed

Answer: A

Explanation:

When you restart PIM, the following tasks are performed: The PIM database is deleted. The MRIB and MFIB are unaffected and forwarding of traffic continues.

The multicast route ownership is verified through the MRIB. Periodic PIM join and prune messages from neighbors are used to repopulate the database.
https://www.cisco.com/c/en/us/td/docs/switches/datacenter/nexus9000/sw/6-x/multicast/configuration/guide/b_C

NEW QUESTION 107

A network architect considers a Cisco HyperFlex design solution for a company. The proposed solution is for a virtual environment that is not performance-sensitive, but the solution must have high storage capacity and a low cost. Which Cisco HyperFlex storage configuration should be used?

- A. All-Flash
- B. Hybrid
- C. All-SAN
- D. All-NVMe

Answer: B

Explanation:

<https://www.cisco.com/c/en/us/products/collateral/hyperconverged-infrastructure/hyperflex-hx-series/white-pap> Hybrid contains HDD for capacity.

NEW QUESTION 108

A content delivery network sends video traffic to a multicast distribution device where the receiver requests the traffic from the multicast distribution device through an IGMP join message. When the traffic reaches the multicast routing device from a CDN, the switching network populates the multicast routing table in the group (S, G) and the multicast distribution device sends the required traffic back to the receiver. Which feature is used to send back the traffic from the streamer to the receiver in the group (S, G)?

- A. RP
- B. IGMP
- C. Reverse Path Forwarding
- D. Source Specific Multicast

Answer: C

NEW QUESTION 111

Which feature is supported with an In-Service Software Upgrade on a Cisco Nexus 9000 Series Switch?

- A. configuration changes during an upgrade
- B. nondisruptive upgrades via nonstop forwarding
- C. zero downtime downgrades via dual supervisor modules
- D. upgrades to individual modules and line cards

Answer: B

NEW QUESTION 113

Refer to the exhibit.

```
switch# show vpc brief
Legend:
      (*) - local vPC is down, forwarding via vPC peer-link

vPC domain id          : 10
Peer status             : peer adjacency formed ok
vPC keep-alive status   : peer is alive
Configuration consistency status: success
Type-2 consistency status : success
vPC role                : primary
Number of vPCs configured : 1
Peer Gateway            : Enabled
Dual-active excluded VLANs : -

vPC Peer-link status
-----
id   Port   Status Active vlans
--   --
1    Po20   up    100-105

vPC status
-----
id   Port   Status Consistency Reason      Active vlans
--   --
7    Po7    up    success  success  100-104
8    Po8    up    success  success  100-102
9    Po9    up    success  success  100-103
```

Which VLANs are capable to be assigned on vPC interfaces?

- A. 100-103
- B. 100-104
- C. 100-102
- D. 100-105

Answer: D

NEW QUESTION 117

An engineer must implement the FCoE on the Cisco Nexus 9000 Series Switch-based infrastructure. The deployment will contain dual-homed fabric extenders and must support jumbo frames with port channels. Which two sets of actions complete the configuration? (Choose two.)

- ☒ Configure the interface with mtu 9516.
Disable the feature NPIV.
- ☒ Create a virtual Fibre Channel interface.
Bind vFC to physical interface.
- ☐ Create a FCoE switch profile.
Enable config sync.
- ☐ Create a dedicated VSAN for FEX.
Bind VSAN to FEX uplinks.
- ☐ Execute fcoe enable-fex.
Configure FEX uplinks with mtu 9216.

- A. Option A
- B. Option B
- C. Option C
- D. Option D
- E. Option E

Answer: BE

NEW QUESTION 121

Which data interchange format is presented in this output?

```
{
  "totalCount": "1",
  "imdata": [
    {
      "fabricNode": {
        "attributes": {
          "address": "10.0.40.65",
          "apicType": "apic",
          "dn": "topology/pod-1/node-201",
          "id": "201",
          "lastStateModTs": "2020-09-07T10:20:57.236+00:00",
          "modTs": "2020-09-07T10:21:18.912+00:00",
          "model": "N9K-C9336PQ",
          "monPolDn": "uni/fabric/monfab-default",
          "role": "spine",
          "serial": "FDO39106329J",
          "uid": "0",
          "vendor": "Cisco Systems, Inc",
        }
      }
    }
  ]
}
```

- A. XML
- B. YAML
- C. JSON
- D. CSS

Answer: C

NEW QUESTION 126

The VMM domain is integrated between Cisco APICs and vCenter using a distributed vSwitch. The traffic must be blocked between a subset of endpoints in an EPG based on specific VM attributes and the rest of the VMs in that EPG. Which set of actions blocks this traffic?

- ☒ 1. Set Allow Microsegmentation under the EPG VMM Domain Association to "True"
2. Set Intra-EPG Isolation to "Enforced" for the EPG
3. Set Intra-EPG Isolation to "Enforced" for the uSeg EPG
- ☐ 1. Set Allow Microsegmentation under the EPG VMM Domain Association to "True"
2. Set Intra-EPG Isolation to "Unenforced" for the EPG
3. Set Intra-EPG Isolation to "Unenforced" for the uSeg EPG
- ☐ 1. Set Allow Microsegmentation under the EPG VMM Domain Association to "False"
2. Set Intra-EPG Isolation to "Unenforced" for the EPG
3. Set Intra-EPG Isolation to "Enforced" for the uSeg EPG
- ☐ 1. Set Allow Microsegmentation under the EPG VMM Domain Association to "True"
2. Set Intra-EPG Isolation to "Enforced" for the EPG
3. Set Intra-EPG Isolation to "Unenforced" for the uSeg EPG

- A. Option A

- B. Option B
- C. Option C
- D. Option D

Answer: A

NEW QUESTION 131

Refer to the exhibit.

```
<?xml version="1.0" encoding="UTF-8"?><imdata totalCount="1"><error
code="403" text="Token was invalid (Error: Token timeout)"/></imdata>
```

An engineer configures a new application profile using REST API and receives this error message. Which method can be used before application profile can be configured?

- A. POST to aaaLogin
- B. POST to aaaRefresh
- C. POST to aaaLogout
- D. GET to aaaListDomains

Answer: A


Explanation:

https://www.cisco.com/c/en/us/td/docs/switches/datacenter/aci/apic/sw/2-x/rest_cfg/2_1_x/b_Cisco_APIC_REST_API_Configuration_Guide/b_Cisco_APIC_REST_API_Configuration_Guide_chapter_01.html

Authentication

REST API username- and password-based authentication uses a special subset of request Universal Resource Identifiers (URIs), including **aaaLogin**, **aaaLogout**, and **aaaRefresh** as the DN targets of a POST operation. Their payloads contain a simple XML or JSON payload containing the MO representation of an **aaaUser** object with the attribute name and **pwd** defining the username and password: for example, **<aaaUser name='admin' pwd='password'/>**. The response to the POST operation will contain an authentication token as both a Set-Cookie header and an attribute to the **aaaLogin** object in the response named **token**, for which the XPath is **/imdata/aaaLogin/@token** if the encoding is XML. Subsequent operations on the REST API can use this token value as a cookie named **APIC-cookie** to authenticate future requests.

Subscription

The REST API supports the subscription to one or more MOs during your active API session. When any MO is created, changed, or deleted because of a user- or system-initiated action, an event is generated. If the event changes the data on any of the active subscribed queries, the APIC will :  out a notification to the API client that created the subscription.

NEW QUESTION 134

Several production and development database servers exist in the same EPG and IP subnet. The IT security policy is to prevent connections between production and development. Which attribute must be used to assign the servers to different microsegments?

- A. Data center
- B. VMM domain
- C. VM name
- D. IP address

Answer: C

Explanation:

https://www.cisco.com/c/en/us/td/docs/switches/datacenter/aci/apic/sw/3-x/virtualization/b_ACI_Virtualization_

Example: Microsegmentation with Cisco ACI Within a Single EPG or Multiple EPGs in the Same Tenant

You might assign web servers to an EPG so that you can apply the similar policies. By default, all endpoints within an EPG can freely communicate with each other. However, if this web EPG contains a mix of production and development web servers, you might not want to allow communication between these different types of web servers. Microsegmentation with Cisco ACI allows you to create a new EPG and autoassign endpoints based on their VM name attribute, such as "Prod-xxxx" or "Dev-xxx".

NEW QUESTION 137

APIC EPG Resolution Immediacy is set to "Immediate" Which statement is true about the Deployment Immediacy for VMM domains associated to EPGs?

- A. The "Immediate" and "On demand" options require a port group to be created on the VDS.
- B. If "On demand" is selected, the policy is programmed in the hardware only when the APIC detects a VM created in the EPG.
- C. If "On demand" is selected the policy is programmed in the hardware only when the first packet is received through the data path.
- D. If "immediate" is selected the policy is programmed in the hardware as soon as the leaf is booted.

Answer: C

Explanation:

"Deployment Immediacy On demand — Specifies that the policy is programmed in the hardware policy CAM only when the first packet is received through the data path."

https://www.cisco.com/c/en/us/td/docs/switches/datacenter/aci/apic/sw/1-x/aci-fundamentals/b_ACI-Fundament

NEW QUESTION 138

Refer to the exhibit.



Which backup operation type does not include the Preserve Identities feature?

- A. logical configuration
- B. system configuration
- C. full state
- D. all configuration

Answer: C

Explanation:

This checkbox remains selected for All Configuration and System Configuration. Full State backup does not have Preserver Identity feature.

All configs, logical and system backups seem to allow "preserve identities":

<https://books.google.pt/books?id=5VXUDwAAQBAJ&pg=PT699&lpg=PT699&dq=Preserve+Identities+feature+backup+ucs&source=bl&ots=daWxti4DV&sig=ACfU3U3X8UIPtS8EewzRIqTxqpyNVqOaNQ&hl=es419&sa=X&ved=2ahUKEwiYhtaxyMDqAhXFzIUKHXI8CzoQ6AEwC3oECAoQAQ#v=onepage&q=Preserve%20Identities%20feature%20backup%20ucs&f=false>

NEW QUESTION 143

Which two configuration settings are available in the in the cisco UCS flmware Auto sync server policy?

- A. User Notification
- B. User Acknowledge
- C. No Action
- D. Delayed Action
- E. Immediate Action

Answer: BC

Explanation:

https://www.cisco.com/c/en/us/td/docs/unified_computing/ucs/sw/firmware-mgmt/gui/2-2/b_GUI_Firmware_M Following are the values for the Firmware Auto Sync Server policy: • User Acknowledge—Firmware on the server is not synchronized until the administrator acknowledges the upgrade in the Pending Activities dialog box. • No Action—No firmware upgrade is initiated on the server.

NEW QUESTION 146

A host EPG Client wants to talk to a webserver in EGP Web. A contract with default settings is defined between EPG Client and EPG Web, which allows TCP communication initiated by the client toward the webserver with TCP destination port 80. Which statement is true?

- A. If EPG Web is made a preferred group member, a contract between EPG Client and EPG Web is no longer required for the host in EPG Client to reach the webserver in EPG Web.
- B. If vzAny is configured to consume and provide a "deny all" contract, traffic between EPG Client and EPG Web is no longer allowed.
- C. The host in EPG Client is allowed to connect to TCP destination port 80 on the webserver in EPG Web.The webserver will not be allowed to initiate a separate TCP connection to a host port with TCP source port 80.
- D. The host in EPG Client is allowed to connect to TCP destination port 80 on the webserver in EPG Web.The webserver is allowed to initiate a separate TCP connection to a host port with TCP source port 80.

Answer: D

Explanation:

Apply Both Direction and Reverse Filter Port in the subject for the filter. These two options are by default enabled...This means that if the provider EPG initiates traffic toward the consumer EPG, the Cisco ACI fabric allows it for any destination ports if the source port is 80.

https://www.cisco.com/c/en/us/td/docs/switches/datacenter/aci/apic/sw/1-x/Operating_ACI/guide/

[b_Cisco_Operating_ACI/b_Cisco_Operating_ACI_chapter_01000.html](https://www.cisco.com/c/en/us/td/docs/switches/datacenter/aci/apic/sw/1-x/Operating_ACI/guide/b_Cisco_Operating_ACI/b_Cisco_Operating_ACI_chapter_01000.html) Reverse filter and apply in both directions is default.

If a filter allows traffic from any consumer port to a provider port (e.g. 8888), if reverse port filtering is enabled and the contract is applied both directions (say for TCP traffic), either the consumer or the provider can initiate communication. The provider could open up a TCP socket to the consumer using port 8888, whether the provider or consumer sent traffic first. https://www.cisco.com/c/en/us/td/docs/switches/datacenter/aci/apic/sw/1-x/Operating_ACI/guide/b_Cisco_Operating_ACI/b_Cisco_Operating_ACI_chapter_01000.html

NEW QUESTION 149

Refer to the exhibit. A network engineer must configure an authentication solution for Cisco UCS with these conditions:

- Two-factor authentication must be enabled for all UCS user authentication.
- All AAA packets must be encrypted and use TCP port 49 to establish communication. Which set of actions needs these requirements?

- A. Create the LDAP provider.Change the LDAP group rule in an LDAP provider.
- B. Create the RADIUS group mapping.Change the RADIUS group rule in a RADIUS provider.
- C. Remove the LDAP provider.Create a TACACS+ provider in user management.
- D. Delete the LDAP group mapping.Create a RADIUS provider in user management.

Answer: C

NEW QUESTION 153

A network engineer must download a firmware image from a remote location to a Cisco UCS Fabric Interconnect. The software bundle is over 232 MB in size. The file transfer must use encryption and authentication Which protocol must be used to accomplish this goal?

- A. RDP
- B. HTTPS
- C. SCP
- D. TFTP

Answer: C

NEW QUESTION 154

Drag and drop the storage technologies from the left onto the correct descriptions on the right.

NFSv2	uses client machine authentication
Kerberos	uses users authentication
NFSv4	authenticates clients and servers in NFSv4
RADIUS	authenticates clients to corporate directory systems

- A. Mastered
- B. Not Mastered

Answer: A

Explanation:

Application Description automatically generated

The release of NFSv4 brought a revolution to authentication and security to NFS exports. NFSv4 mandates the implementation of the RPCSEC_GSS kernel module, the Kerberos version 5 GSS-API mechanism, SPKM-3, and LIPKEY. With NFSv4, the mandatory security mechanisms are oriented towards authenticating individual users, and not client machines as used in NFSv2 and NFSv3. https://web.mit.edu/rhel-doc/5/RHEL-5-manual/Deployment_Guide-en-US/s1-nfs-security.html

NEW QUESTION 155

Refer to the exhibit.

```
vlan 10
 fcoe vsan 10

interface ethernet 1/3
 spanning-tree port type edge trunk
 switchport mode trunk
 switchport trunk allowed vlan 1, 10
```

An engineer must configure FCoE on a Cisco Nexus switch. Which two command sets complete this configuration? (Choose two.)

- ☒ interface vfc 10
 - bind interface fcoe-vfc 1/3
 - no shut
- ☐ vsan database
 - vsan 10 interface ethernet 1/3
- ☒ interface fcoe 10
 - bind interface ethernet 1/3
 - no shut
- ☐ interface vfc 10
 - bind interface ethernet 1/3
 - no shut
- ☐ vsan database
 - vsan 10 interface vfc 10

- A. Option A
- B. Option B
- C. Option C
- D. Option D
- E. Option E

Answer: DE

Explanation:

```
switch# configure terminal

switch(config)# vsan database

switch(config-vsan)# vsan 2 interface vfc 4
```

This example shows how to bind a virtual Fibre Channel interface to an Ethernet interface:

```
switch# configure terminal

switch(config)# interface vfc 4

switch(config-if)# bind interface ethernet 1/4
```

https://www.cisco.com/c/en/us/td/docs/switches/datacenter/nexus5000/sw/fcoe/421_n1_1/b_Cisco_n5k_fcoe_config_gd_re_421_n1_1/Cisco_n5k_fcoe_config_gd_re_421_n1_1_chapter4.html

NEW QUESTION 160

An engineer must use the Embedded Event Manager to monitor events that occur on a cisco Nexus 9000 series switch. An environment variable needs to be created so that several policies use the monitored events in in their actions. The external email server is represented by IP address 10.10.10.10. which command sets the environment variable?

- A. N9k2(config)# event manager policy environment mailserver "10.10.10.10"
- B. N9k2# event manager environment mailserver "10.10.10.10"
- C. N9k2 (config-apple1)# environment mailserver "10.10.10.10"
- D. N9k2 (config)# event manager environment mailserver "10.10.10.10"

Answer: D

Explanation:

To set an Embedded Event Manager (EEM) environment variable, use the event manager environment command in global configuration mode. To disable an EEM environment variable, use the no form of this command. <https://www.cisco.com/c/en/us/td/docs/ios-xml/ios/eem/command/eem-cr-book/eem-cr-e1.html>

NEW QUESTION 161

Which two statements about the process of upgrading an EPLD on a Cisco MDS 9000 series Switch are correct? (Choose two.)

- A. The EPLDs for all the modules on a switch must be upgraded at the same time.
- B. EPLD upgrades can be completed without powering down the module during the upgrade.
- C. EPLDs can be upgraded only to the latest EPLD image.
- D. EPLDs can be upgraded without replacing the hardware.
- E. An upgrade verification identifies the impact of each EPLD upgrade.

Answer: DE

Explanation:

https://www.cisco.com/c/en/us/td/docs/switches/datacenter/mds9000/sw/7_3/upgrade/upgrade.html

NEW QUESTION 165

What is a benefit of independent resource scaling in Cisco HyperFlex hybrid architecture?

- A. flexible expansion of compute, caching, and capacity
- B. remote booting of converged servers
- C. multivendor converged node hardware support
- D. support for compute nodes with third-party storage

Answer: D

NEW QUESTION 166

A customer data center experiences bandwidth contention that affects the servers connected to the NPV enabled switch. The NPV switch is connected to the NPV switch using two 10 Gb uplinks but the traffic originating from the connected hosts to the core switch exceeds the available bandwidth. The engineers decided to add a third uplink to the NPV server to increase the available bandwidth. Which set of commands must be used to provision the new uplink?

- ❖ switch2(config)# npv auto-load-balance disruptive
 - ! uplink to NPV Core
 - switch2(config-if)# switchport mode np
- ❖ switch2(config)# port-channel load-balance ethernet source-dest-port
 - ! uplink to NPV Core
 - switch2(config-if)# switchport mode np
- ❖ switch2(config)# npv traffic-map server-interface
 - ! uplink to NPV Core
 - switch2(config-if)# switchport mode npiv
- ❖ switch2(config)# npv auto-load-balance
 - ! uplink to NPV Core
 - switch2(config-if)# switchport mode npiv

- A. Option A
- B. Option B
- C. Option C
- D. Option D

Answer: B

NEW QUESTION 170

Refer to the exhibit.

```

1.130599 192.168.254.1 -> 192.168.254.13 TCP 60 29652 > ssh [ACK] Seq=1 Ack=53
Win=32449 Len=0
1.136261 00:8e:73:a2:41:0e -> Spanning-tree-(for-bridges)_00 STP 60 Conf. Root =
8192/10/ec:e1:a9:df:6c:80 Cost = 22 Port = 0x800e
1.373417 192.168.254.13 -> 192.168.254.1 SSH 106 Encrypted response packet len=52
1.570377 192.168.254.1 -> 192.168.254.13 TCP 60 29652 > ssh [ACK] Seq=1 Ack=105
Win=32786 Len=0
1.815558 192.168.254.13 -> 192.168.254.1 SSH 106 Encrypted response packet len=52
2.021840 192.168.254.1 -> 192.168.254.13 TCP 60 29652 > ssh [ACK] Seq=1 Ack=157
Win=32773 Len=0
2.525173 192.168.254.13 -> 192.168.254.1 SSH 106 Encrypted response packet len=52
2.731382 192.168.254.1 -> 192.168.254.13 TCP 60 29652 > ssh [ACK] Seq=1 Ack=209
Win=32760 Len=0
2.947365 192.168.254.13 -> 192.168.254.1 NTP 90 NTP Version 2, client
2.947623 192.168.254.1 -> 192.168.254.13 NTP 90 NTP Version 2, server
3.138157 00:8e:73:a2:41:0e -> Spanning-tree-(for-bridges)_00 STP 60 Conf. Root =
8192/10/ec:e1:a9:df:6c:80 Cost = 22 Port = 0x800e
3.139400 192.168.254.13 -> 192.168.254.1 SSH 106 Encrypted response packet len=52
3.270728 192.168.254.4 -> 239.255.70.83 UDP 166 Source port: cfs Destination port:
cfs
3.341123 192.168.254.1 -> 192.168.254.13 TCP 60 29652 > ssh [ACK] Seq=1 Ack=261
Win=32747 Len=0
3.835409 192.168.254.13 -> 192.168.254.1 SSH 106 Encrypted response packet len=52
4.041411 192.168.254.1 -> 192.168.254.13 TCP 60 29652 > ssh [ACK] Seq=1 Ack=313
Win=32734 Len=0
4.535284 192.168.254.13 -> 192.168.254.1 SSH 106 Encrypted response packet len=52
4.741072 192.168.254.1 -> 192.168.254.13 TCP 60 29652 > ssh [ACK] Seq=1 Ack=365
Win=32721 Len=0
4.947308 192.168.254.13 -> 192.168.254.1 NTP 90 NTP Version 2, client
4.947519 192.168.254.1 -> 192.168.254.13 NTP 90 NTP Version 2, server
5.139627 00:8e:73:a2:41:0e -> Spanning-tree-(for-bridges)_00 STP 60 Conf. Root =
8192/10/ec:e1:a9:df:6c:80 Cost = 22 Port = 0x800e
5.140867 192.168.254.13 -> 192.168.254.1 SSH 106 Encrypted response packet len=52

```

Cisco Fabric Services is enabled in the network. Which type of IP address is used by the Cisco Fabric Services protocol?

- A. IPv4 unicast address
- B. IPv4 multicast address
- C. IPv4 gateway address
- D. IPv4 anycast address

Answer: B

NEW QUESTION 174

An engineer is automating a Cisco Nexus 9000 Series Switch using the NX-OS API. Which code snippet creates a local user called "tacuser" with an expiration date of 22 November?

A)

☐ POST <http://10.91.12.14/api/mo/sys/userext.json>

```
{
  "aaaUserEp": {
    "children": [
      {
        "aaaUser": {
          "attributes": {
            "allowExpired": "no",
            "expiration": "2021-11-22T00:00:00.000+00:00",
            "expires": "yes",
            "name": "tacuser",
            "pwd": "AKw47PS3:g4M410:F501",
            "pwdEncryptType": "clear"
          }
        }
      }
    ]
  }
}
```

B)

☐ GET <http://10.12.14.91/api/mo/sys/userext/user-tacuser.json>

```
{
  {
    "aaaUserEp": {
      "attributes": {
        "childAction": "add",
        "dn": "sys/userext",
        "lcOwn": "local",
        "modTs": "2021-11-22T00:00:00.000+00:00",
        "pwdSecureMode": "yes",
        "pwdStrengthCheck": "no",
        "status": "",
        "uid": "0"
      }
    }
  }
}
```

C)

○ HEAD http://10.14.91.12/api/policymgr/mo/uni/userext.json

```
{
  "aaaUser": {
    "name": "tacuser",
    "phone": "",
    "pwd": "H97NW894SDASgQL",
    "expire": "yes",
    "aaaUserDomain": {
      "description": "",
      "name": "all",
      "rn": "userdomain-all"
    }
  }
}
```

○ PUT http://10.91.14.12/api/policymgr/mo/uni/

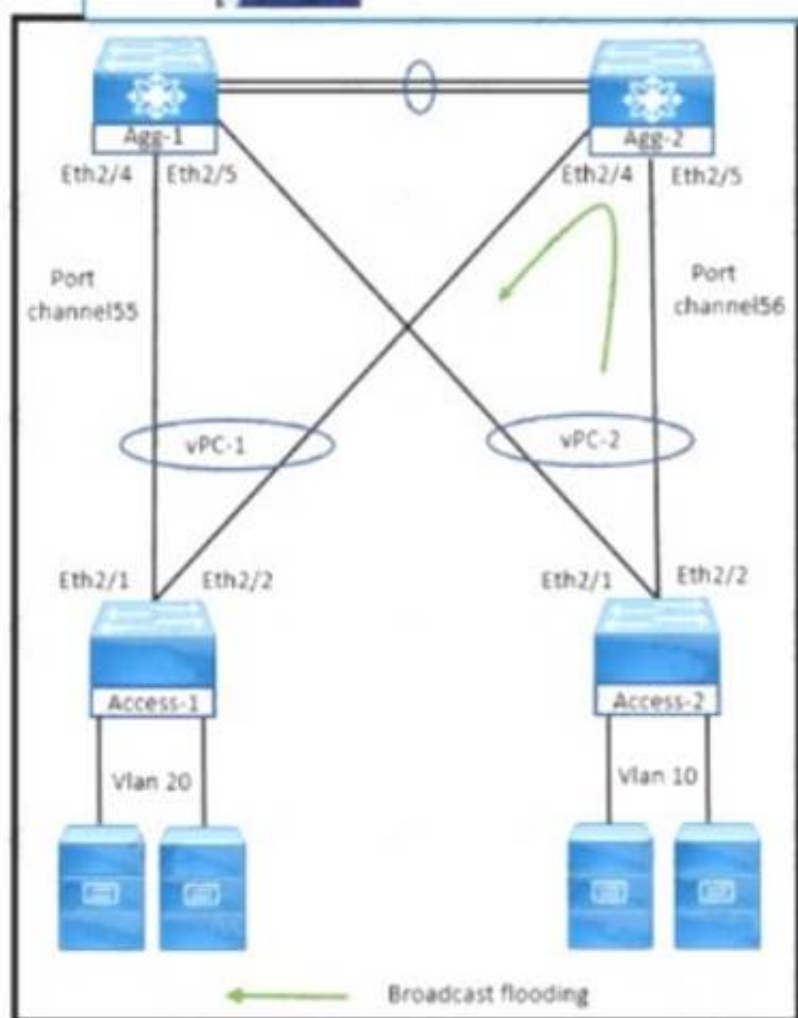
```
{
  "aaaUser": {
    "email": "tacuser@cisco.com",
    "name": "tacuser",
    "createdAt": "2020-09-11T00:00:00.090210Z",
    "authorizations": {
      "authorizedZone": "VDC1",
      "expiresAt": "2021-11-22T00:00:00.000+00:00",
      "authorizedByName": "OPS",
      "authorizedByEmail": "ops@company.com"
    }
  }
}
```

- A. Option A
- B. Option B
- C. Option C

Answer: A

NEW QUESTION 177

Refer to the exhibit.



What happens to the broadcast traffic when it reaches aggregation switches?

- A. Only Agg-1 switch receives broadcast packets and does not forward to the peer link on Agg-2 switch.
- B. Agg-1 switch prevents broadcast packets received on the vPC peer link from exiting the switch on ports Eth2M and Eth2/5
- C. Agg-2 switch receives broadcast packets and stops forwarding to the peer link on Agg-1 switch.
- D. Agg1 and Agg2 switches receive broadcast packets and does not forward them to me peer link or the port channel

Answer: D

NEW QUESTION 180

A network engineer must create a script to quickly verify IP reachability for multiple hosts using ping from the Cisco NX-OS switches. The script should use the management VRF and exit the shell after execution Which script should be used to achieve this objective?

- ☐ A.

```

tclsh
foreach address {
  192.168.254.1
  192.168.254.2
  192.168.254.3
  192.168.254.4
} {ping $address source 192.168.254.254}
tclquit

```
- ☐ B.

```

tclsh
foreach address {
  192.168.254.1
  192.168.254.2
  192.168.254.3
  192.168.254.4
} {ping $address source 192.168.254.254}
}

```
- ☐ C.

```

tclsh
foreach address {
  192.168.254.1
  192.168.254.2
  192.168.254.3
  192.168.254.4
} {ping $address vrf management source 192.168.254.254}
}

```
- ☐ D.

```

tclsh
foreach address {
  192.168.254.1
  192.168.254.2
  192.168.254.3
  192.168.254.4
} {cli ping $address vrf management source 192.168.254.254}
}
tclquit

```

- A. Option A
- B. Option B
- C. Option C
- D. Option D

Answer: D

NEW QUESTION 181

An engineer needs a utility to translate traditional Nexus CLI inputs and generate Python code using XML and JSON message formats. The solution needs to be available on a Nexus 7700 series switch. Which utility should be used?

- A. NX-OS JSON-RPC
- B. NX-API Sandbox
- C. Guest Shell for NX-OS
- D. Open NX-OS

Answer: B

Explanation:

<https://developer.cisco.com/docs/nx-os/#!nx-api-cli-developer-sandbox>

NEW QUESTION 182

An engineer is converting a Cisco MDS switch to support NPIV mode. What should be considered when implementing the solution?

- A. It must be enabled on VSAN 1 only.
- B. It must be enabled globally on all VSANs.
- C. It requires mapping of external interface traffic.
- D. It requires the FLOGI database to be disabled.

Answer: B

Explanation:

https://www.cisco.com/c/en/us/td/docs/switches/datacenter/mds9000/sw/5_0/configuration/guides/int/nxos/cli_i

NEW QUESTION 185

A network engineer must configure a Fibre Channel interface on the Cisco MDS 9000 Series Switch The configuration must meet these requirements

- The interface must be disabled when the bit errors threshold is exceeded
- Buffer-to-buffer credits must be set to the maximum value
- The interface must have full bandwidth allocated for its port group

Which command set configures a Fibre Channel interface that meets these requirements?

- A.

```

interface fc1/1
switchport bit-errors
switchport fcrxbbcredit 220 mode Fx
switchport rate-mode dedicated

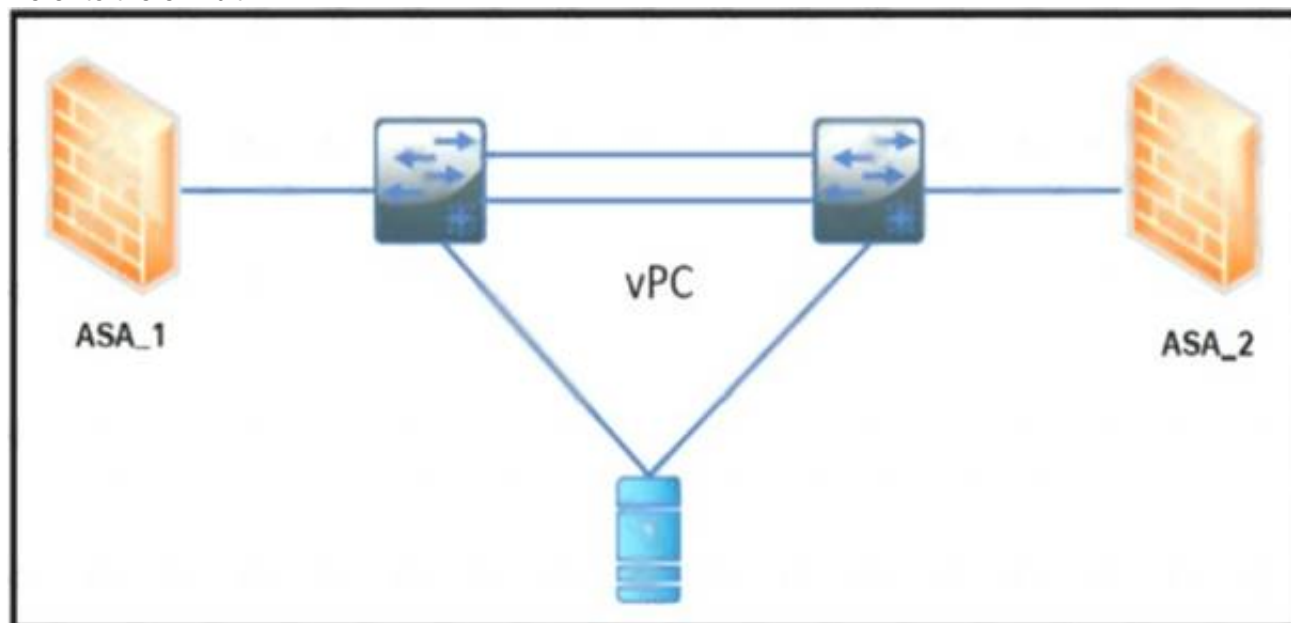
```

- B. `interface fc1/1`
`switchport ignore bit-errors`
`switchport fcrxbcredit 255 mode Fx`
`no switchport rate-mode`
- C. `interface fc1/1`
`no switchport ignore bit-errors`
`switchport fcrxbcredit 255 mode Fx`
`switchport rate-mode dedicated`
- D. `interface fc1/1`
`no switchport bit-errors`
`switchport fcrxbcredit 220 mode Fx`
`no switchport rate-mode`

Answer: A

NEW QUESTION 189

Refer to the exhibit



The ASA 1 acts as a Layer 3 gateway for all servers. The servers lose the gateway connectivity when the vPC peer links go down and the vPC keepalive remains up. Which action improves the high availability in the network?

- A. Create a static port channel with two links from each firewall to the switch
- B. Activate the vPC orphan-port suspend feature on the switch ports connected to the firewall
- C. Implement the IP reoVect feature on the vPC devices
- D. Enable the vPC peer gateway feature on the vPC devices

Answer: D

NEW QUESTION 194

An engineer must implement access control for Cisco UCS Manager. The configuration must meet these requirements.

- > All users and user groups must be configured using Active Directory.
- > User1 must have full access to the storage operations configuration.

Which action must be performed on Cisco UCS to meet the requirements?

- A. Create a custom role for the user and RADIUS for the role-mapping for Active Directory.
- B. Execute a built-in role for the user and LDAP for the role-mapping for Active Directory.
- C. Create a custom role for the user and LDAP for the role-mappings for Active Directory.
- D. Execute a built-in role for the user and RADIUS for the role-mapping for Active Directory.

Answer: B

NEW QUESTION 195

An engineer is implementing security on the Cisco MDS 9000 switch. Drag drop the descriptions from the left onto the correct security features on the right.

can be distributed via fabric services
uses the Exchange Fabric Membership Data protocol
allows a preconfigured set of Fibre Channel devices to logically connect to SAN ports
prevent unauthorized switches from joining the fabric or disrupting current fabric operations

Fabric Binding
Target 1
Target 2
Port Security
Target 3
Target 4

- A. Mastered
 B. Not Mastered

Answer: A

Explanation:

can be distributed via fabric services
uses the Exchange Fabric Membership Data protocol
allows a preconfigured set of Fibre Channel devices to logically connect to SAN ports
prevent unauthorized switches from joining the fabric or disrupting current fabric operations

Fabric Binding
prevent unauthorized switches from joining the fabric or disrupting current fabric operations
uses the Exchange Fabric Membership Data protocol
Port Security
can be distributed via fabric services
allows a preconfigured set of Fibre Channel devices to logically connect to SAN ports

NEW QUESTION 200

A customer asks an engineer to develop an orchestration solution to automate repetitive tasks. The customer operations team must integrate the tool with its existing automation framework. The customer asks for the tool to support these requirements:

- The customer's security requirements mandate the use of SSH transport.
- No extra software must be installed on the managed systems.
- The support staff has limited knowledge of scripting languages, so the solution must be easy to read and use declarative language.

Which solution meets these requirements?

- A. PowerShell
 B. Ansible
 C. Chef
 D. Puppet

Answer: B

NEW QUESTION 202

An engineer must generate a Cisco UCS Manager backup. The backup should include all logical configuration and contain all system and logical configuration settings. Which backup type should be selected to meet these requirements?

- A. system configuration
 B. logical configuration
 C. all configuration
 D. full state

Answer: C

NEW QUESTION 207

What is a characteristic of the NFS protocol?

- A. It is used for booting Cisco UCS B-Series servers.
 B. It is used to access a storage array at a block level.
 C. It uses UDP and HTTP as its transport.
 D. It uses remote procedure calls with TCP/IP for transport.

Answer: D

NEW QUESTION 211

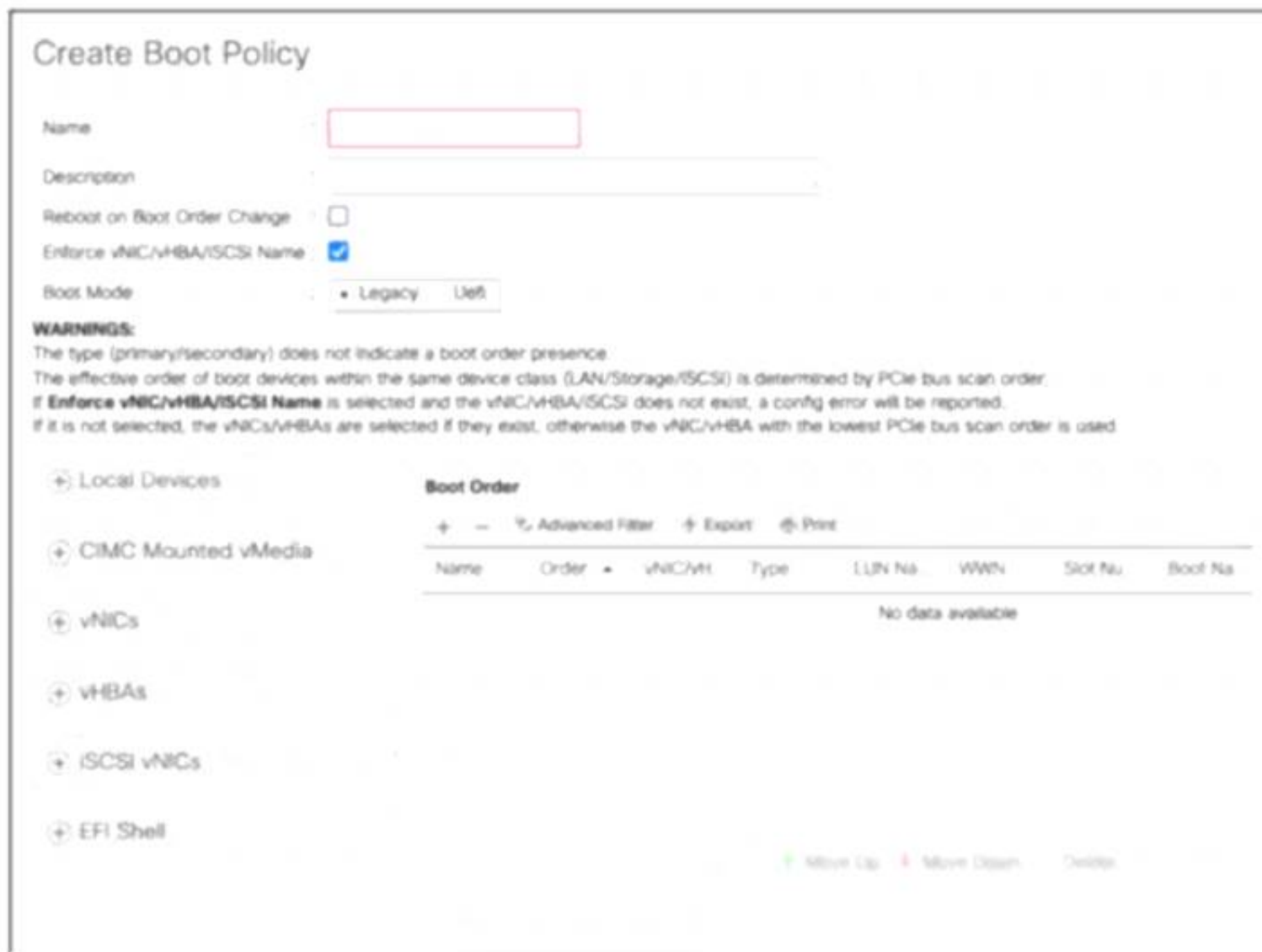
An engineer must perform a POAP deployment of a Cisco Nexus 9000 Series Switch. The switch must automatically receive its software image and configuration file upon power-on. Also, only UDP is permitted between the Nexus 9000 switch and the server that hosts the Cisco NX-OS system images. Which set of actions completes the configuration?

- A. Enable option 67. Define TFTP transfer protocol.
- B. Enable option 43. Define HTTP transfer protocol.
- C. Enable option 46. Define TFTP transfer protocol.
- D. Enable option 35. Define HTTP transfer protocol.

Answer: A

NEW QUESTION 212

Refer to the exhibit.



An engineer installs a new Cisco UCS B-Series server. The requirement is to install an operating system on a LUN that is provided by the Fibre Channel storage array. Which two steps must be configured in the boot policy to accomplish this goal? (Choose two.)

- A. Disable Enforce vNIC/vHBA/iSCSI Name
- B. Add Local CD/DVD and SAN Boot.
- C. Configure a SAN Boot Target with a WWPN
- D. Set Boot Order to External USB and LAN Boot
- E. Create iSCSI vNICs and add Local LUN

Answer: AD

NEW QUESTION 214

An engineer is implementing FCoE. Which aspect of DCBXP on a Cisco Nexus switch affects this implementation?

- A. It uses the Cisco Fabric Services protocol to exchange parameters between two peer links.
- B. It always is enabled on 10/100-Mbps native Ethernet ports.
- C. It provides the authentication of peers on the Cisco Nexus switch.
- D. It requires that LLDP transmit and LLDP receive are enabled on the FCoE interface.

Answer: D

Explanation:

The Data Center Bridging Exchange Protocol (DCBXP) is an extension of LLDP. It is used to announce, exchange, and negotiate node parameters between peers. DCBXP parameters are packaged into a specific DCBXP TLV. This TLV is designed to provide an acknowledgement to the received LLDP packet. DCBXP is enabled by default, provided LLDP is enabled. DCBXP is disabled on ports where LLDP transmit or receive is disabled.
https://www.cisco.com/c/en/us/td/docs/switches/datacenter/nexus5000/sw/layer2/503_n2_1/b_Cisco_n5k_layer2

NEW QUESTION 218

Refer to the exhibit.

```

Step 20 Enter no (no is the default) if you are satisfied with the configuration.

The following configuration will be applied:

switchname CiscoMDS
interface mgmt0
  ip address 192.168.10.10
  subnetmask 255.255.255.0
  no shutdown
ip default-gateway 192.168.10.1
telnet server enable
no ssh server enable
no system default switchport shutdown
system default switchport trunk mode on
no zone default-zone permit vsan 1-4093
zoneset distribute full vsan 1-4093
Would you like to edit the configuration? (yes/no) [n]: no

Step 21 Enter yes (yes is default) to use and save this configuration.

Use this configuration and save it? (yes/no) [y]: yes
  
```

An engineer is configuring a Cisco MDS 9000 Series Switch for the first time. After the initial setup process, the name server at IP 192.168.10.11 is missing from the configuration. Which set of actions completes the configuration?

- A. Enter no at step 21 and reinitialize the install
- B. Press the Esc key to access ROMMON mode.
- C. Enter no at step 21 and reload the switch
- D. Configure the advanced IP options.
- E. Enter yes at step 21 to edit the configuration
- F. Add the line dns-server 192.168.10.11.
- G. Enter yes at step 21 and log in
- H. Modify the startup configuration DNS

Answer: B

NEW QUESTION 220

Refer to the exhibit.

```

interface Ethernet1/1
  description Server1
interface Ethernet1/2
  description Server2
interface Ethernet1/3
  description Server3
interface Ethernet1/4
  description Server4
interface Ethernet1/5
  description Server5
  
```

Which command is run from the Guest Shell to set the description on the first five interfaces of the Cisco Nexus switch?

- ☐ [guestshell@guestshell ~]\$ for x in (1..5); do dohost "conf t" ; "interface eth1/\$x" ; "description Server\$x" ; done
- ☐ [guestshell@guestshell ~]\$ for x in (1..5); dohost "conf t ; interface eth1/\$x ; description Server\$x";
- ☐ [guestshell@guestshell ~]\$ for x in (1..5); dohost "conf t ; interface eth1/\$x ; description Server\$x" ;
- ☐ [guestshell@guestshell ~]\$ for x in (1..5); do dohost "conf t ; interface eth1/\$x ; description Server\$x" ; done

- A. Option A
- B. Option B
- C. Option C
- D. Option D

Answer: D

Explanation:

NXs1# guestshell

[admin@guestshell ~]\$ for x in {1..5}; do dohost "conf t ; interface eth1/\$x ; description Server\$x" ; done Enter configuration commands, one per line. End with

CNTL/Z.

Enter configuration commands, one per line. End with CNTL/Z. Enter configuration commands, one per line. End with CNTL/Z. Enter configuration commands, one per line. End with CNTL/Z. Enter configuration commands, one per line. End with CNTL/Z. [admin@guestshell ~]\$

NEW QUESTION 224

An engineer must remove the running configuration of a Cisco Nexus 9000 Series Switch and replace it with a backup file without restarting the switch. The backup file is stored on an SFTP server that is reachable via the An engineer must remove the running configuration mgmt0 interface Which set of commands accomplishes this task'

- ☒ copy sftp://admin@192.168.10.100/backup.cfg startup-config vrf mgmt0
copy startup-config running-config
- ☐ configure replace sftp://admin@192.168.10.100/backup.cfg vrf mgmt0
copy running-config bootflash://startup-config
- ☐ copy sftp://admin@192.168.10.100/backup.cfg bootflash:///backup.cfg vrf management
configure replace bootflash:///backup.cfg
- ☐ copy sftp://admin@192.168.10.100/backup.cfg startup-config vrf management
reload in 10

- A. Option A
- B. Option B
- C. Option C
- D. Option D

Answer: C

NEW QUESTION 229

What is an advantage of using Ansible for automation as compared to puppet and chef?

- A. Ansible automates the enforcement of configuration settings.
- B. Ansible perform automation without installing a software agent on the target node.
- C. Ansible configures a set of CLI commands on a device by using NETCONF.
- D. Ansible abstracts a scenario so that set of configuration setting can be used across multiple operating systems.

Answer: B

NEW QUESTION 231

A company provides applications and database hosting services to multiple customers using isolated infrastructure-as-a-service services within the same data center environment. The environment is based on Cisco MDS 9000 Series Switches. The requirement is to manage the environment by using Fibre Channel Security Protocol and to enable user authentication when the centralized AAA server is unreachable All communication between the MDS switches and the remote servers must be encrypted. Which command set must be used to meet these requirements?

- ☒ aaa group server radius RadiusServer1
aaa authentication login default RadiusServer1
- ☐ aaa group server radius RadiusServer1
aaa authentication dhchap default group RadiusServer1
- ☐ aaa group server tacacs+ TacacsServer1
aaa authentication dhchap default group TacacsServer1
- ☐ aaa group server tacacs+ TacacsServer1
aaa authentication login console TacacsServer1

- A. Option A
- B. Option B
- C. Option C
- D. Option D

Answer: B

NEW QUESTION 233

Which component is excluded by default from the host firmware package?

- A. network interface controller
- B. board controller
- C. storage controller
- D. local disk

Answer: D

NEW QUESTION 235

An engineer implements a Python script inside a Cisco Bash shell The script contains this dictionary object


```
switch_id_list = {
    "N9K-Spine-1": "842534699747",
    "N9K-Leaf-1": "126784690",
    "N9K-Leaf-2": "56556473"
}
```

Which command must be used to add the 'NSK-Spine-2': '1498323434' element to the switch_id list dictionary?

- ☐ switch_id_list = [{"N9K-Spine-2": "1498323434"}]
- ☐ switch_id_list.update({"N9K-Spine-2": "1498323434"})
- ☐ switch_id_list.append({"N9K-Spine-2": "1498323434"})
- ☐ switch_id_list += {"N9K-Spine-2": "1498323434"}

- A. Option A
- B. Option B
- C. Option C
- D. Option D

Answer: C

NEW QUESTION 237

Due to a domain name change at a customer site, a Cisco UCS cluster must be renamed. An engineer must recommend a solution to ensure that the Cisco UCS Manager is available over HTTPS. Which action accomplishes this goal?

- A. Reinstall the cluster to generate the default key ring certificate
- B. Generate a new default key ring certificate from the Cisco UCS Manager
- C. Reboot the SSO component of the Cisco UCS Manager
- D. Regenerate the default key ring certificate manually

Answer: D

Explanation:

https://www.cisco.com/c/en/us/td/docs/unified_computing/ucs/ucs-manager/GUI-User-Guides/Admin-Managem

The default key ring certificate must be manually regenerated if the cluster name changes or the certificate expires.

NEW QUESTION 240

An engineer must configure the order in which the server attempts to boot from available boot device types using Cisco Integrated Management Controller (Cisco IMC). The engineer must change the boot order configuration during the setup and apply the new requirements multiple times. The requirement is to change the Cisco IMC actual boot order so it is different from the configured boot order. Which setting accomplishes this goal?

- A. Enable the system to boot with the configured boot order.
- B. Set the boot configuration directly through BIOS.
- C. Configure the legacy and precision boot order to be mutually exclusive.
- D. Apply UEFI Secure Boot for a nonsupported operating system.

Answer: A

Explanation:

https://www.cisco.com/en/US/docs/unified_computing/ucs/c/sw/gui/config/guide/1.5/b_Cisco_UCS_C-series_G

NEW QUESTION 243

Refer to the exhibit.

```
Switch1# show checkpoint summary
1) pim-checkpoint:
Created by admin
Created at Tue, 00:50:29 22 Jun 2021
Size is 24,855 bytes
User Checkpoint Summary
-----
Description: Created by Admin.

2) system-fm-pim:
Created by admin
Created at Tue, 00:08:57 22 Jun 2021
Size is 24,834 bytes
System Checkpoint Summary
-----
Description: Created by Feature Manager.
```

Which command must be used to restore configuration changes made by disabling the PIM feature and skipping any errors?

Refer to the exhibit. Which command must be used to restore configuration changes made by disabling the PIM feature and skipping any errors?

- A. rollback running-config checkpoint new-checkpoint stop-at-first-failure
- B. rollback running-config checkpoint new-checkpoint verbose
- C. rollback running-config checkpoint system-fm-pim-best-effort

D. rollback running-config checkpoint system-fm-pim atomic

Answer: C

NEW QUESTION 246

.....

THANKS FOR TRYING THE DEMO OF OUR PRODUCT

Visit Our Site to Purchase the Full Set of Actual 350-601 Exam Questions With Answers.

We Also Provide Practice Exam Software That Simulates Real Exam Environment And Has Many Self-Assessment Features. Order the 350-601 Product From:

<https://www.2passeasy.com/dumps/350-601/>

Money Back Guarantee

350-601 Practice Exam Features:

- * 350-601 Questions and Answers Updated Frequently
- * 350-601 Practice Questions Verified by Expert Senior Certified Staff
- * 350-601 Most Realistic Questions that Guarantee you a Pass on Your FirstTry
- * 350-601 Practice Test Questions in Multiple Choice Formats and Updatesfor 1 Year