



Juniper

Exam Questions JN0-363

Service Provider Routing and Switching Specialist (JNCIS-SP)

NEW QUESTION 1

What are two types of SIDs used in segment touting? (Choose two.)

- A. node
- B. adjacency
- C. link
- D. interface

Answer: AB

NEW QUESTION 2

Which statement is correct about the FE80::/10 prefix?

- A. This prefix range is used for the link local address.
- B. This prefix range is used on the loopback interface.
- C. This prefix range is reserved for multicast applications
- D. This prefix range is not reserved.

Answer: A

NEW QUESTION 3

How does a Junos device learn about MAC addresses when it is first connected to an Ethernet LAN?

- A. The device sends out a network broadcast message asking for all devices and MAC addresses on the network and stores this information in addition to the interface from which the response was received.
- B. The device learns the destination MAC addresses from traffic in the network and stores this MAC address in addition to the interface from which the traffic was received.
- C. The device learns the source MAC addresses from traffic in the network and stores this MAC address in addition to the interface from which the traffic was received.
- D. The device sends out a network multicast message asking for all devices and MAC addresses on the network and stores this information in addition to the interface from which the response was received.

Answer: D

NEW QUESTION 4

What is a key differentiator of generate routes from aggregate routes?

- A. Generate routes use a forwarding next hop.
- B. Generate routes have a default next-hop value of reject.
- C. Generate routes have a default preference value of 210.
- D. Generate routes cannot be used as a gateway of last resort.

Answer: C

NEW QUESTION 5

Exhibit

```
user@R2> show ospf interface extensive
Interface State Area DR ID BDR ID Nbrs
ge-0/0/3.0 DR 0.0.0.1 192.168.1.2 192.168.1.1 1 Type: LAN, Address: 172.26.1.2, Mask:
255.255.255.252, MTU: 1500, Cost: 1
  DR addr: 172.26.1.2, BDR addr: 172.26.1.1, Priority: 128, Adj count: 1
  Hello: 10, Dead: 40, ReXmit: 5, Not Stub
  Auth type: None Topology default (ID 0) -> Cost: 0
ge-0/0/1.0 BDR 0.0.0.0 192.168.1.3 192.168.1.2 1
  Type: LAN, Address: 172.26.2.1, Mask: 255.255.255.252, MTU: 1500, Cost: 1
  DR addr: 172.26.2.2, BDR addr: 172.26.2.1, Priority: 128, Adj count: 1 Hello: 10,
Dead: 40, ReXmit: 5, Not Stub
  Auth type: None
  Topology default (ID 0) -> Cost: 0
```

Referring to the exhibit, which two statements are correct? (Choose two.)

- A. The OSPF Interfaces are configured as point-to-point.
- B. The ge-0/0/1.0 Interface is configured as passive.
- C. The R2 device is an ABR.
- D. Junos OS default OSPF hello timers and dead intervals are used on all interfaces.

Answer: BD

NEW QUESTION 6

Which two statements are correct about the way that BGP propagates routes by default? (Choose two.)

- A. A route learned by EBGP will be re-advertised to IBGP peers.
- B. A route learned by IBGP will not be re-advertised to IBGP peers.
- C. A route learned by EBGP will not be re-advertised to IBGP peers.

D. A route learned by IBGP will be re-advertised to IBGP peers.

Answer: CD

NEW QUESTION 7

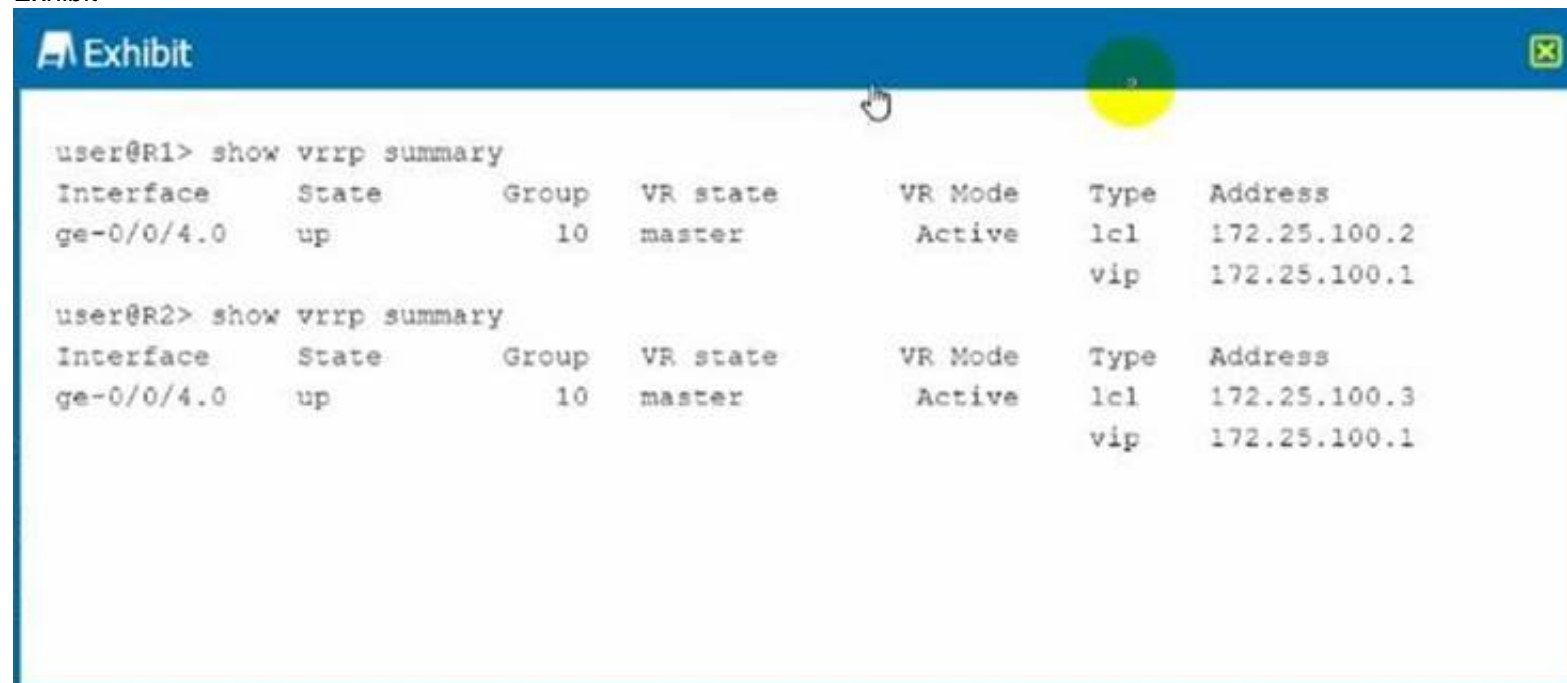
Which two statements are correct when using LDP? (Choose two.)

- A. The Inet.3 table will contain only the paths explicitly defined.
- B. The inet.3 table will contain a full mesh of label-switched paths to other LDP-enabled routers.
- C. LDP label-switched paths are created by configuring LDP on at least one physical router interface.
- D. LDP label-switched paths are created by configuring LDP on the loopback Interface.

Answer: BC

NEW QUESTION 8

Exhibit



```

user@R1> show vrrp summary
Interface      State      Group  VR state  VR Mode  Type  Address
ge-0/0/4.0    up         10     master   Active   lcl   172.25.100.2
               vip       172.25.100.1

user@R2> show vrrp summary
Interface      State      Group  VR state  VR Mode  Type  Address
ge-0/0/4.0    up         10     master   Active   lcl   172.25.100.3
               vip       172.25.100.1
    
```

Referring to the exhibit, which statement is true about VRRP?

- A. VRRP communication between the two devices is not functioning correctly.
- B. Both routers are in the same state because they have the same VRRP priority.
- C. RRP Is functioning normally in active/active mode.
- D. The routers should use different virtual IP addresses for VRRP to function correctly.

Answer: D

NEW QUESTION 9

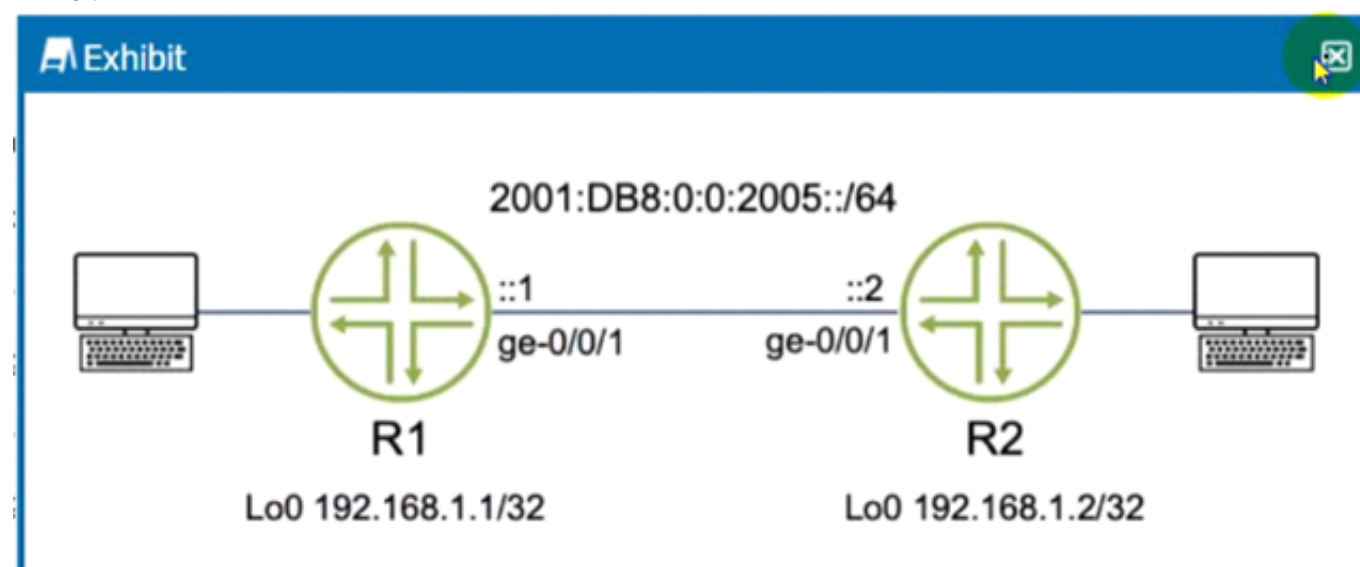
What are three types of MPLS routers? (Choose three.)

- A. transit routers
- B. peering routers
- C. egress routers
- D. aggregation routers
- E. ingress routers

Answer: ACE

NEW QUESTION 10

Exhibit



You are asked to configure OSPF between routers R1 and R2 using IPv6 addresses. Which two tasks will accomplish your objective? (Choose two.)

- A. Issue the sec protocols ospf area 0.0.0.0 interface ge-0/0/1.0 command.
- B. Under the [edit routing-options] hierarchy, configure a 32-bit router ID.

- C. issue the set protocols ospf3 area 0.0.0.0 interface ge-0/0/1.0 command.
- D. Under the [edit routing-options] hierarchy, configure a 128-bit router ID.

Answer: AD

NEW QUESTION 10

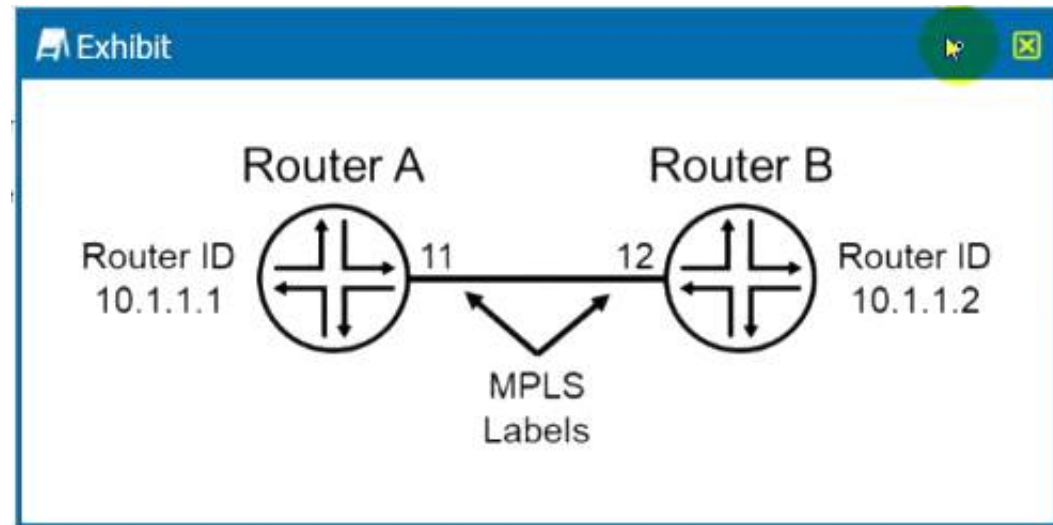
The segment routing SRGB start label is 10,000 and the SRGB index range is 500.
 In this scenario, which two statements are correct? (Choose two.)

- A. The first usable label is 10,001.
- B. The last usable label is 10,501.
- C. The last usable label is 10,499.
- D. The first usable label is 10,000.

Answer: CD

NEW QUESTION 15

Exhibit



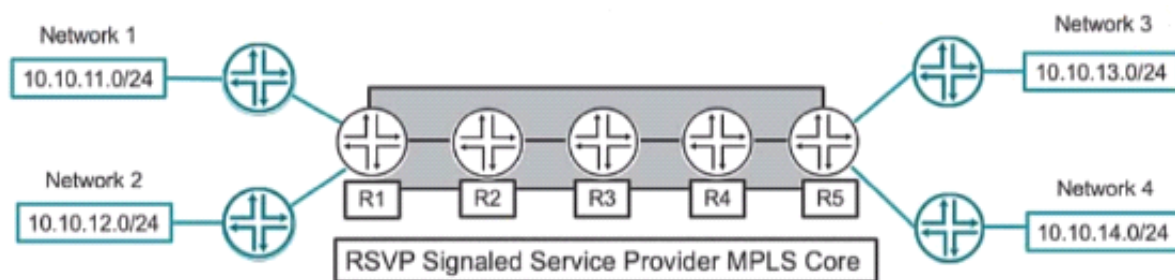
The routers shown in the exhibit are configured for segment routing.
 In this scenario, what is the adjacency SIO that Router B advertises to Router A?

- A. 12
- B. 10.1.1.1
- C. 10.1.1.2
- D. 11

Answer: B

NEW QUESTION 20

Exhibit



Referring to the exhibit, what is the minimum number of LSPs required to support all four networks?

- A. 1
- B. 2
- C. 8
- D. 4

Answer: C

NEW QUESTION 25

Exhibit

```
[edit]
user@router# set routing-options nonstop-routing
[edit]
user@router#
```

Referring to the exhibit, which two additional steps should you take to fully configure NSR? (Choose two.)

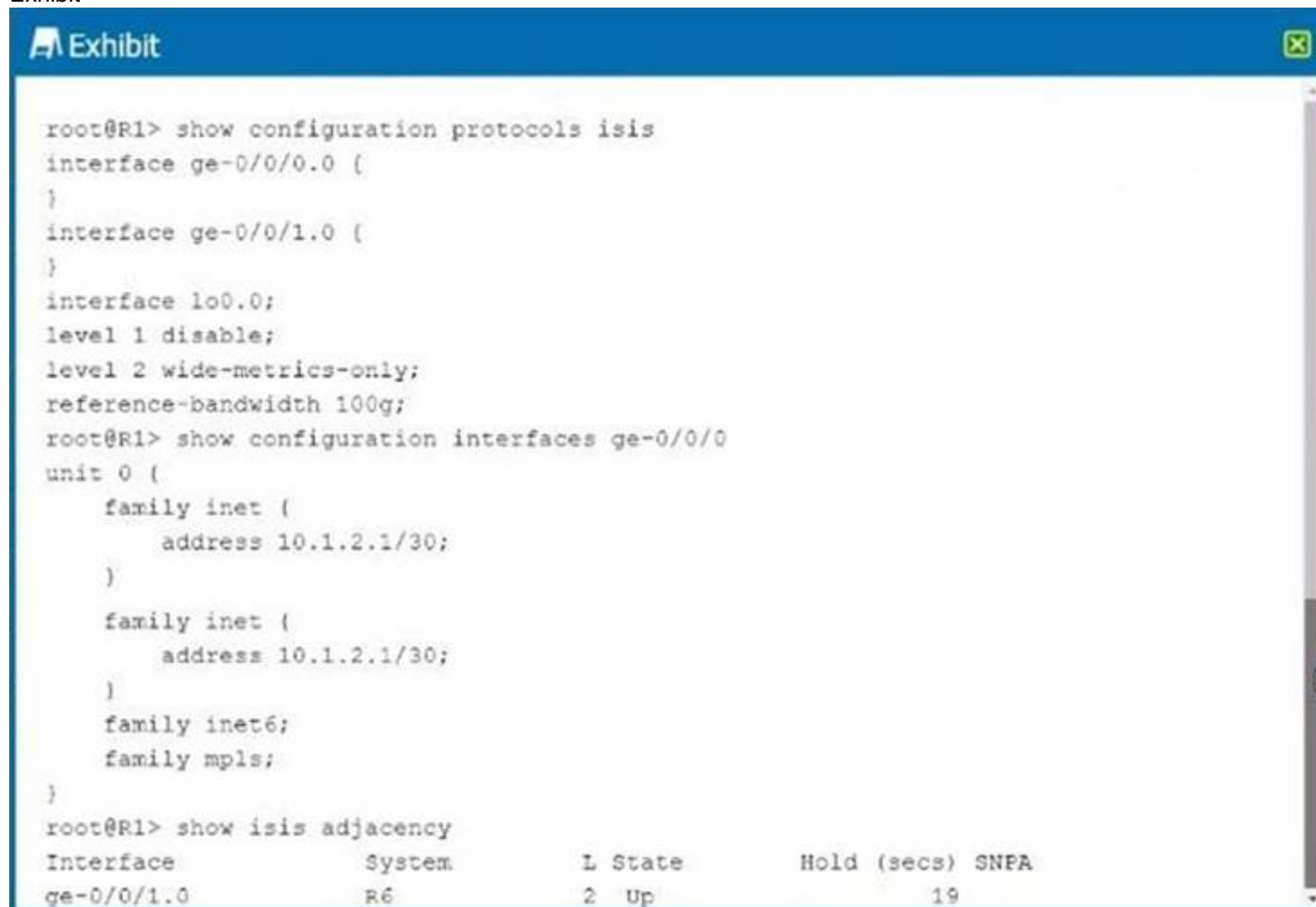
- A. You should configure the max period for NSR precision timers.
- B. You must configure GRES.
- C. You must configure graceful restart.

D. You should configure commit synchronization.

Answer: AB

NEW QUESTION 29

Exhibit



```

root@R1> show configuration protocols isis
interface ge-0/0/0.0 {
}
interface ge-0/0/1.0 {
}
interface lo0.0;
level 1 disable;
level 2 wide-metrics-only;
reference-bandwidth 100g;
root@R1> show configuration interfaces ge-0/0/0
unit 0 {
    family inet {
        address 10.1.2.1/30;
    }
    family inet {
        address 10.1.2.1/30;
    }
    family inet6;
    family mpls;
}
root@R1> show isis adjacency
Interface      System      L State      Hold (secs) SNPA
ge-0/0/1.0     R6          2 Up         19
  
```

You configured interface ge-0/070.0 to run IS-IS. but this interface does not appear in the output of the show isis adjacency command as shown in the exhibit. What is the problem in this scenario?

- A. This is a Gigabit Ethernet interface, that is incompatible with the reference-bandwidth 100g statement.
- B. The family iso statement must be added to the logical interface.
- C. The router at the other end of the link is not sending any IS-IS Hello messages.
- D. The router at the other end of the link is a Level 1 only router.

Answer: B

NEW QUESTION 32

Which configuration setting prohibits a static route from being redistributed by a dynamic routing protocol?

- A. route-filter
- B. no-readvertise
- C. qualified-next-hop
- D. passive

Answer: B

NEW QUESTION 37

An OSPF router does not have a router ID configured.

In this scenario, which statement is correct about the router ID?

- A. The Junos OS will use the IP address assigned to the interface with the lowest MAC address.
- B. A router ID will not be assigned until it is manually configured.
- C. The Junos OS will use the IP address assigned to the loopback interface for the router ID.
- D. The Junos OS will use the IP address assigned to the Interface with the highest priority.

Answer: B

NEW QUESTION 38

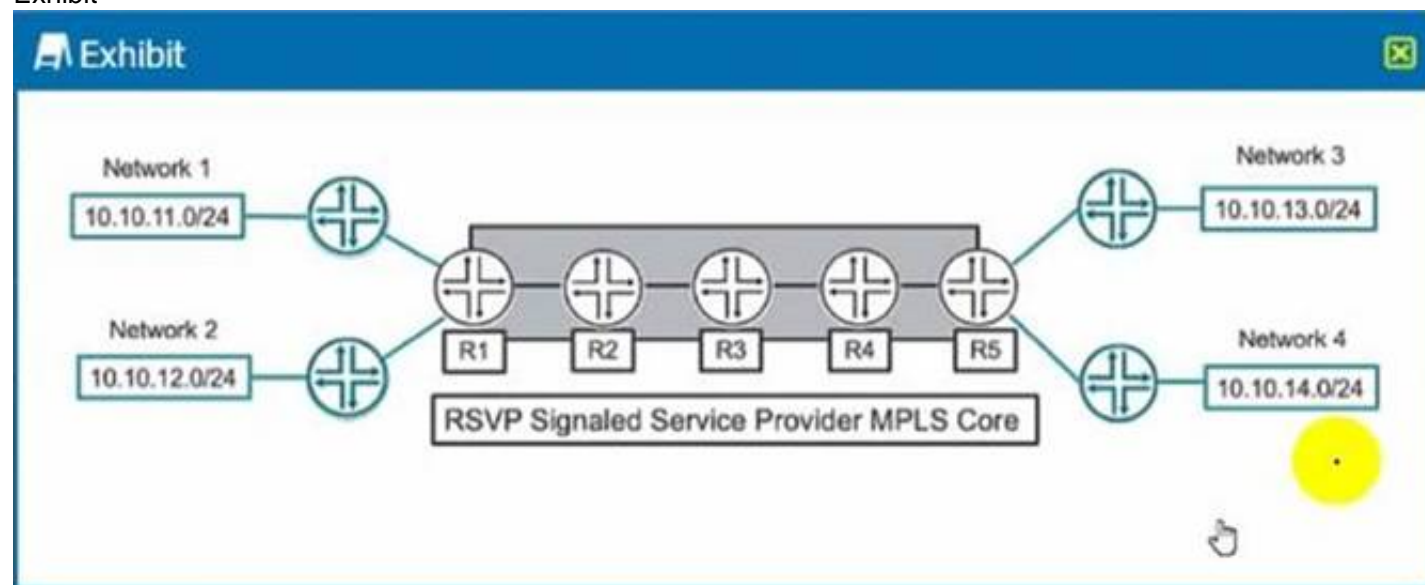
You are bringing a new network online with three MX Series devices enabled for STP. No root bridge priority has been configured. Which statement is true in this scenario?

- A. The device with the lowest MAC address will be elected as the root bridge.
- B. The device with the highest MAC address will be elected as the root bridge.
- C. The device with the lowest numerical lo0 IP address will be elected as the root bridge.
- D. The device with the highest numerical lo0 IP address will be elected as The bridge.

Answer: A

NEW QUESTION 40

Exhibit



Which two statements are correct about the service provider MPLS network shown in the exhibit? (Choose two.)

- A. R3 is considered a P router.
- B. R3 is considered a PE router.
- C. R3 is considered a transit router.
- D. R3 is considered an ingress router.

Answer: AB

NEW QUESTION 45

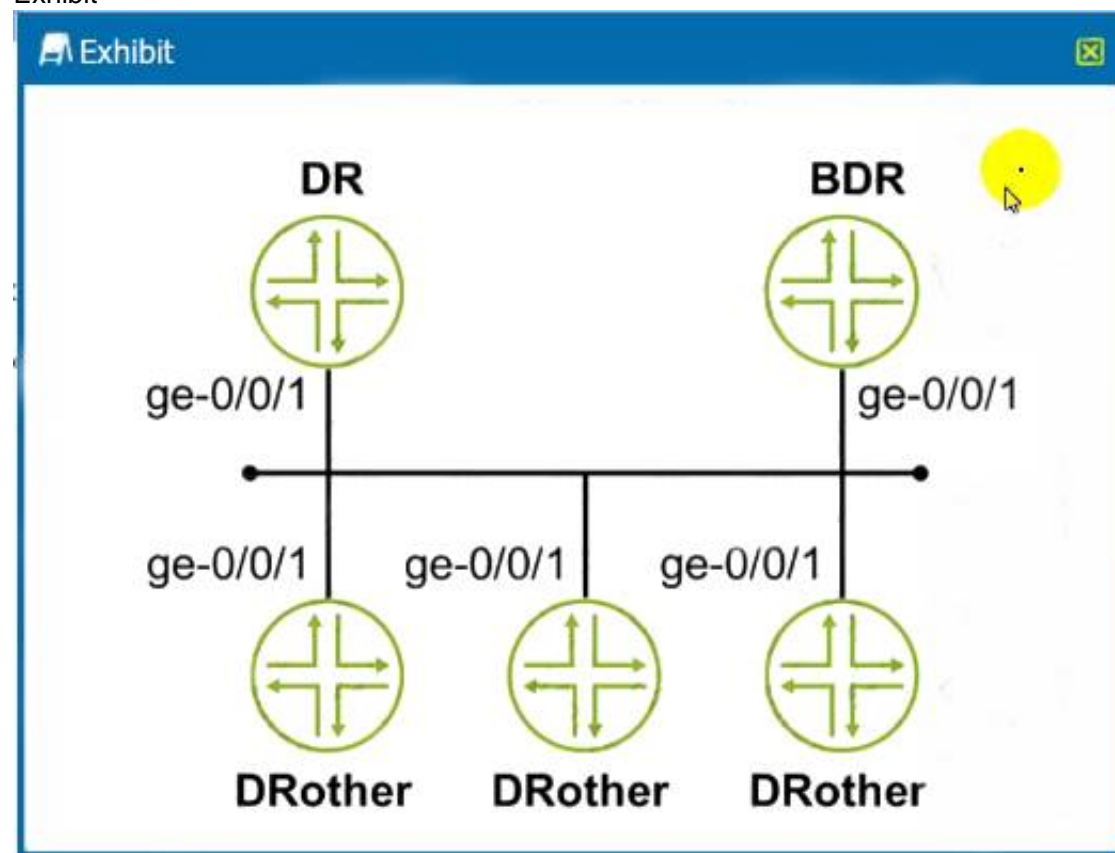
Which BGP attribute is used to detect routing loops?

- A. AS path
- B. MED
- C. local preference
- D. next hop

Answer: A

NEW QUESTION 48

Exhibit



You are asked to configure the OSPF environment to prevent the DRoother routers from participating in DR/BDR election. Referring to the exhibit, which command will accomplish this task?

- A. set protocols ospf area 0.0.0.0 interface ge-0/0/1 priority 255
- B. set protocols ospf area 0.0.0.0 interface ge-0/0/1 priority 0
- C. set protocols ospf area 0.0.0.0 interface ge-0/0/1 interface-type nbma
- D. set protocols ospf area 0.0.0.0 interface ge-0/0/1 interface-type p2p

Answer: A

NEW QUESTION 49

You want to enable a routing platform with redundant REs to switch from a primary RE to a backup RE without alerting peer nodes. Which two technologies would you use to satisfy this requirement? (Choose two.)

- A. GRES

- B. VRRP
- C. NSR
- D. ISSU

Answer: BC

NEW QUESTION 51

What are two bridging concepts that are used to maintain an Ethernet switching table? (Choose two.)

- A. learning
- B. exporting
- C. aging
- D. timing

Answer: A

NEW QUESTION 56

Which two statements are correct about IS-IS? (Choose two.)

- A. A level 1 only router can never form an adjacency with a level 2 only router.
- B. For level 2 adjacencies, the area IDs can be different.
- C. For level 2 adjacencies, the area IDs must be the same.
- D. A level 1 only router can form an adjacency with a level 2 only router.

Answer: CD

NEW QUESTION 58

Which new field is added to an IPv6 header as compared to IPv4?

- A. version
- B. checksum
- C. fragment offset
- D. flow label

Answer: D

NEW QUESTION 63

You are bringing a new network online with three IS-IS routers using default Junos election priorities. The routers are configured as Level 2 only IS-IS routers. Which statement is true about the DIS election in this scenario?

- A. The router with the highest MAC address will be elected as the DIS.
- B. The router with the highest numerical lo0 IP address will be elected as the DIS.
- C. The router with the lowest numerical lo0 IP address will be elected as the DIS.
- D. The router with the lowest MAC address will be elected as the DIS.

Answer: B

NEW QUESTION 66

You are asked to create connections between routing instances on the same Junos device and route between the connected Instances. What are two ways to accomplish this task? (Choose two.)

- A. Use physical interfaces.
- B. Use an IRB interface.
- C. Use logical tunnel interfaces.
- D. Use loopback interfaces.

Answer: AB

NEW QUESTION 67

Interface ge-0/0/0.0 connects your network to your ISP. You want to advertise this interface address as an Internal route in OSPF without creating a neighbor with your ISP.

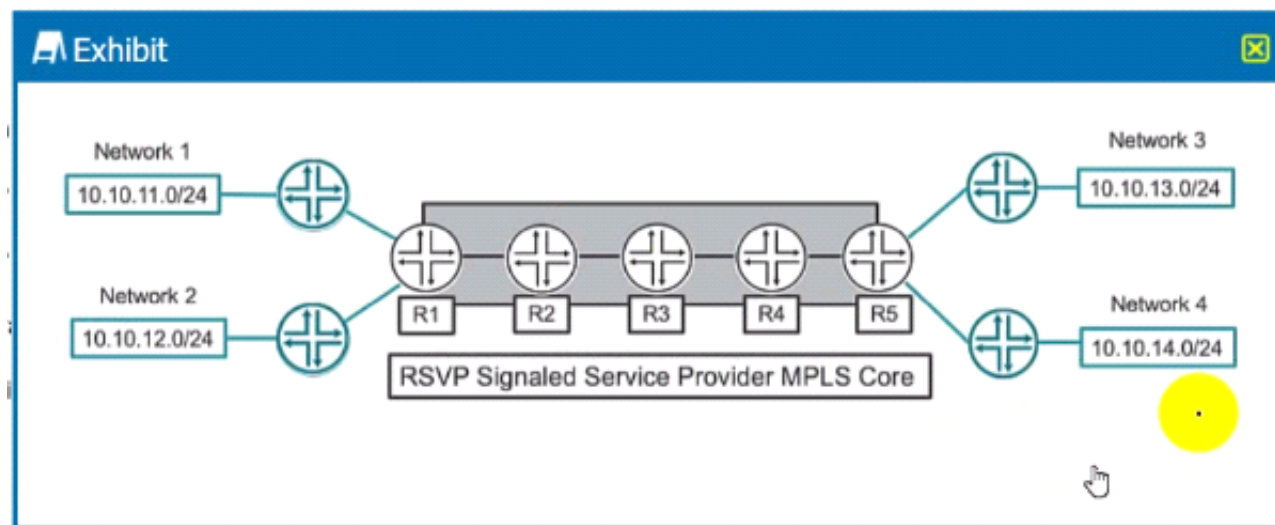
In this scenario, how is this task accomplished?

- A. Remove interface ge-0/0/0.0 from OSPF.
- B. Create a generated route for Interface ge-0/0/0.0.
- C. Add ge-0/0/0.0 as a passive interface in OSPF.
- D. Configure a static route for Interface ge-0/0/0.0.

Answer: D

NEW QUESTION 69

Exhibit button



Which two statements are correct about the service provider MPLS network shown in the exhibit? (Choose two.)

- A. R3 will perform a label pop operation on the transport MPLS label.
- B. Traffic from Network 1 to Network 3 and traffic from Network 1 to Network 4 each need their own unique label-switched path.
- C. Traffic from Network 1 to Network 3 and from Network 1 to Network 4 can share the same label-switched path.
- D. R3 will perform a label swap operation on the transport MPLS label.

Answer: AD

NEW QUESTION 72

You are adding an IPv6 configuration to an Interface on a Junos device. In this scenario, which statement is correct?

- A. The link local address must be manually configured within the fd00::/8 prefix range.
- B. The link local address must be manually configured within the fe80::/10 prefix range.
- C. The link local address is automatically created using the MAC address within the fe80::/10 prefix range.
- D. The link local address is automatically created using the MAC address within the fd00::/8 prefix range.

Answer: D

NEW QUESTION 75

What is the correct order of BGP attributes for active route selection?

- A. next hop -> local preference -> AS path -> MED -> origin
- B. next hop -> AS path -> local preference -> origin -> MED
- C. next hop -> local preference -> AS path -> origin -> MED
- D. next hop -> origin -> local preference -> AS path -> MED

Answer: C

NEW QUESTION 80

.....

Thank You for Trying Our Product

We offer two products:

1st - We have Practice Tests Software with Actual Exam Questions

2nd - Questions and Answers in PDF Format

JN0-363 Practice Exam Features:

- * JN0-363 Questions and Answers Updated Frequently
- * JN0-363 Practice Questions Verified by Expert Senior Certified Staff
- * JN0-363 Most Realistic Questions that Guarantee you a Pass on Your First Try
- * JN0-363 Practice Test Questions in Multiple Choice Formats and Updates for 1 Year

100% Actual & Verified — Instant Download, Please Click
[Order The JN0-363 Practice Test Here](#)