

## HPE0-J68 Dumps

## HPE Storage Solutions

<https://www.certleader.com/HPE0-J68-dumps.html>

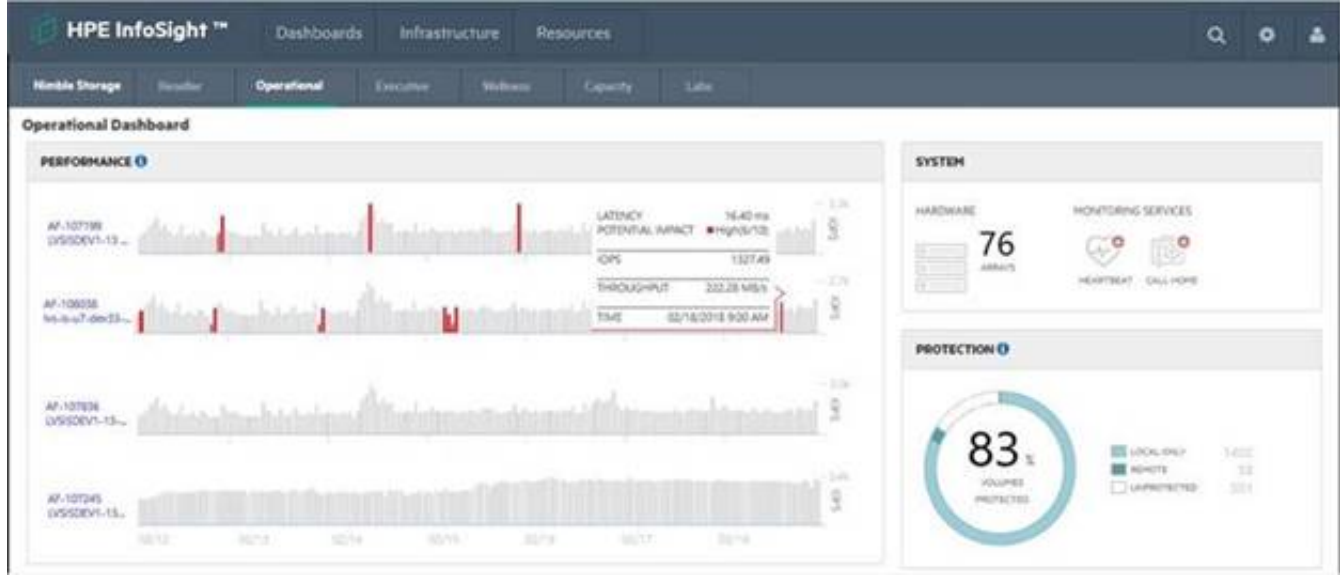


**NEW QUESTION 1**

- (Exam Topic 1)

A customer has a Nimble HF40 and needs to create a support ticket.

Click the option in the InfoSight portal where the customer can perform this task.

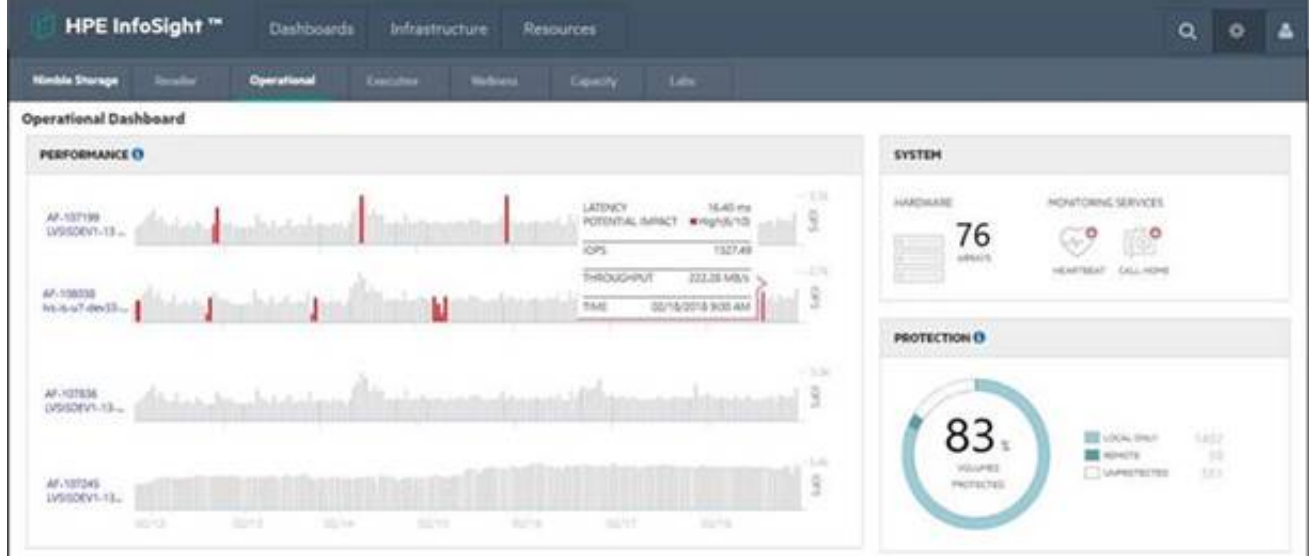


- A. Mastered
- B. Not Mastered

**Answer:** A

**Explanation:**

Graphical user interface, website, timeline Description automatically generated



**NEW QUESTION 2**

- (Exam Topic 1)

Match each address with the associated address type.

Type	Address Format
FC	<input type="text"/> 20:32:00:60:69:e2:19:82
IPv6	<input type="text"/> 00:1B:44:11:3A:B7
iSCSI	<input type="text"/> iqn.2000-05.com.3pardata:20210002ac00851c:15.372.28.0
MAC	<input type="text"/> fe80::85b0:5df6:1dfb:6793

- A. Mastered
- B. Not Mastered

**Answer:** A

**Explanation:**

Graphical user interface, text, application Description automatically generated

**NEW QUESTION 3**

- (Exam Topic 1)

A customer is purchasing an HPE MSA 2050 for a branch office. They will use it for critical data services. The customer is concerned that 64 snapshots will not be

adequate as they grow.  
What can be added to the array to address the customer's concerns?

- A. Advanced Data Services Suite license
- B. All-inclusive Multi-system license
- C. Virtual Copy license
- D. Adaptive Optimization license

**Answer: D**

#### NEW QUESTION 4

- (Exam Topic 1)

You need to create an N:M relationship between VMware hypervisors and virtual volumes with the least amount of administrative overhead.  
Click the option where you can create a group of VMware hypervisors for volumes provisioning.



- A. Mastered
- B. Not Mastered

**Answer: A**

#### Explanation:

Graphical user interface, text Description automatically generated

#### NEW QUESTION 5

- (Exam Topic 1)

You are designing an HPE MSA iSCSI for a customer.  
Which components are typically part of the solution? (Choose two.)

- A. Drives
- B. SFPs
- C. Service Processor
- D. All-inclusive Multi-system software
- E. Switch zones

**Answer: AB**

#### NEW QUESTION 6

- (Exam Topic 1)

A customer uses Veeam to backup their entire datacenter.  
Which Veeam feature allows them to recover a single email from their Exchange server?

- A. Changed block tracking
- B. Explorer for Storage Snapshots
- C. Data Mover Service
- D. SureBackup

**Answer: B**

#### NEW QUESTION 7

- (Exam Topic 1)

You are installing an HPE 3PAR StoreServ solution and need to integrate the array with the 3rd party monitoring application customer is using.  
Which technology can be configured at 3PAR to support forwarding events from the array to the customer's monitoring application?

- A. IPMI
- B. NTP
- C. SNMPv3
- D. DMI

**Answer: C**

**NEW QUESTION 8**

- (Exam Topic 1)

Which tool is used to determine current compaction ratios on Primera arrays?

- A. WebUI
- B. Storage Management Utility (SMU)
- C. NinjaStars
- D. SSMC System Reporter

**Answer:** D

**NEW QUESTION 9**

- (Exam Topic 1)

You have proposed a Primera array to a customer for primary storage. The customer currently has an older HPE 3PAR array and will continue to use it moving forward. The customer would like high availability configured.

Which RMC Peer Copy pre-requisites do you need to point out to the customer? (Choose two.)

- A. 4-port 1 Gb Ethernet Adapter (NIC) is required in each array
- B. Target drive type must match source drive type
- C. 2-port 10 Gb Ethernet Adapter (NIC) is required in each array
- D. Check that the 3PAR OS version is supported
- E. Required license must be provided
- F. RMC 6.2

**Answer:** AE

**NEW QUESTION 10**

- (Exam Topic 1)

A customer successfully implemented an HPE Primera solution.

Which tool can be used to verify performance counters, such as IOPS, match customer requirements?

- A. NinjaCrawler
- B. OneView
- C. Recovery Manager Central
- D. Primera on-node management GUI

**Answer:** D

**NEW QUESTION 10**

- (Exam Topic 1)

A customer is planning to upgrade their HF40 controllers to support additional I/O requirements. To which model can they upgrade to meet their new requirements?

- A. AF60
- B. AF40
- C. HF60
- D. HF40C

**Answer:** D

**NEW QUESTION 13**

- (Exam Topic 1)

Which feature allows HPE Primera, HPE Nimble, and HPE XP arrays to work with third-party management tools?

- A. REST API
- B. Data Protection Manager (DPM)
- C. StoreServe Management Console (SSMC)
- D. Service Processor

**Answer:** A

**NEW QUESTION 16**

- (Exam Topic 1)

You have proposed that a customer replace their legacy SAN switches with new ?-Series switches. They are concerned about the management of all the devices, so you have included SANnav in the proposal.

What are the benefits of SANnav that you should emphasize to this customer? (Choose two.)

- A. It runs in a dedicated JVM
- B. It offers automated SPOCK validation
- C. It runs in a browser
- D. It provides a global View
- E. It provides fine-grain visibility into Storage Fabrics (FC + Ethernet)

**Answer:** CD

**NEW QUESTION 17**

- (Exam Topic 1)

Select the correct initiation option for each HPE Primera function.

Answer Area

User Initiated		Stripe data across drives
Autonomic		Create Virtual Volumes
		Create Common Provisioning Groups
		Create RAID-6 Virtual Volumes
		Optional Performance Management
		Export LUNs

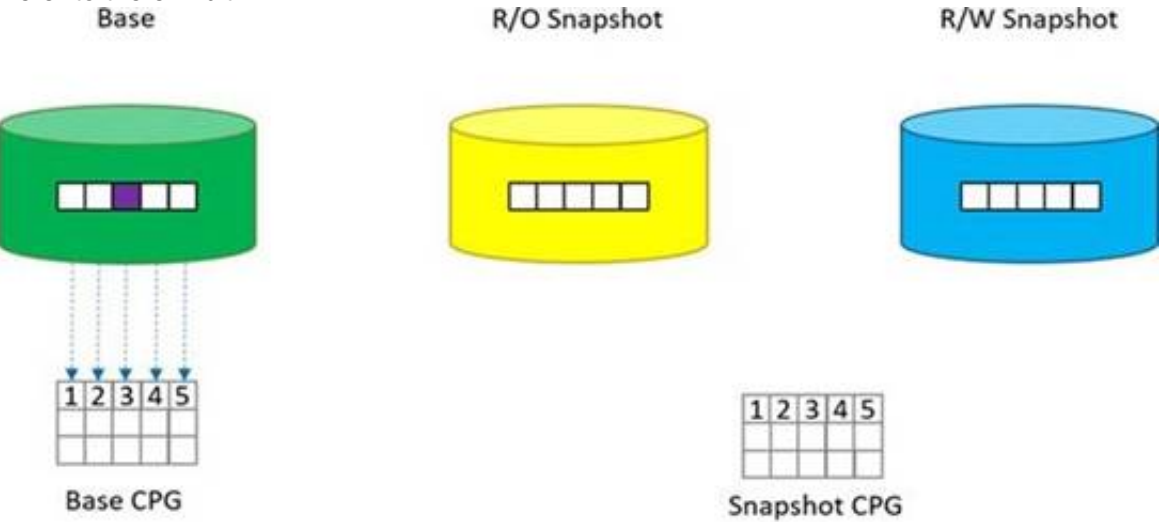
- A. Mastered
- B. Not Mastered

Answer: A

Explanation:  
Graphical user interface, application Description automatically generated

NEW QUESTION 22

- (Exam Topic 1)  
Refer to the exhibit.



You create two snapshots of a thin provisioned base volume in an HPE Primera. One snapshot is read only and the other is read-write. A write occurs at the location shown in in the diagram.  
Place the actions on the left into the order they are taken on the right.

Action

Order

Copy block to snapshot CPG

Redirect the snapshots

Update the block with new data

- A. Mastered
- B. Not Mastered

Answer: A

Explanation:  
A picture containing diagram Description automatically generated

NEW QUESTION 25

- (Exam Topic 1)  
You are proposing a StoreOnce solution to a customer that has always used tape for a backup target. What should you suggest to ensure that the StoreOnce deduplication is correctly sized?

- A. StoreOnce timeless storage
- B. DDAnalyzer
- C. proof of concept with StoreOnce VSA



D. OCA

**Answer:** B

**NEW QUESTION 28**

- (Exam Topic 2)

A customer want to implement a virtualized environment and want to provide independent storage access to individual virtual servers. Which feature need to enabled on the B-series FC switches to support this solution?

- A. FCIP
- B. NPIV
- C. ALPA
- D. RSCN

**Answer:** B

**NEW QUESTION 32**

- (Exam Topic 2)

Which built-in HPE 3PAR StoreServ technology reduces database transaction logs response time?

- A. Express Writes
- B. Adaptive Flash Cache
- C. Thin provisioning
- D. Thin Deduplication

**Answer:** B

**NEW QUESTION 34**

- (Exam Topic 2)

A customer has a large deployment of HPE Synergy compute modules. HPE 3PAR StoreServ arrays, and HPE StoreOnce system in a single data center. They are concerned about the risk of data loss due to site disaster and seeks cost-effective offsite Disaster Recovery protection without the need to deploy a secondary site.

Which HPE solution should you recommend?

- A. HPE StoreOnce VSA
- B. HPE StoreOnce CloudBank
- C. HPE StoreOnce RMC
- D. HPE StoreOnce Catalyst

**Answer:** D

**NEW QUESTION 39**

- (Exam Topic 2)

A customer is a cloud service provider with infrastructure powered by HPE 3PAR Storeserv 9000. The customer is concern about their ability to ensure the quality of service and protect their tenants from unpredictable bursts of I/O from other tenants. What should you recommended to your customer ?

- A. Use priority optimization to enable service level for workloads
- B. Use virtual domain to automatically set multi-tenant policies
- C. Use dynamic optimization to automatically manage quality of service
- D. Use adaptive optimization to optimize service level automatically

**Answer:** A

**NEW QUESTION 40**

- (Exam Topic 2)

Which storage feature is supported by both the HPE StoreVirtual and the HPE 3PAR StoreServ storage, and is a key differentiator of HPE storage solutions in the industry?

- A. Network RAID
- B. Peer Motion
- C. virtual Copy
- D. Dynamic Optimization

**Answer:** B

**NEW QUESTION 41**

- (Exam Topic 2)

Which technology is used in a B-series SAN switch to prevent communicate between unauthorized device?

- A. Port isolation
- B. IVR
- C. Zoning
- D. VSAN

**Answer:** A

#### NEW QUESTION 42

- (Exam Topic 2)

You are presenting a Nimble solution based on CS3000 hardware to a customer. Which support advantage will be provided with this solution(select two)

- A. Customers always interact with a 3rd level support engineer ,when needed
- B. Customers only have to deploy a service processor for automating support tasks.
- C. Infosight handles the work of 1st and 2nd level support specialist Infosight offers predictive analytics and integration into HPE support center using insight Online.
- D. Infosight performs firmware and software updates without additional administrative support.

**Answer:** AC

#### NEW QUESTION 47

- (Exam Topic 2)

A customer has a 3PAR storeserv with FC and SSD drives who would like to improve the performance for random reads. Which 3PAR Storeserve feature would provide better read performance?

- A. Adaptive Flash Cache
- B. Deduplication
- C. Smart Cache
- D. Express Layout

**Answer:** A

#### NEW QUESTION 50

- (Exam Topic 2)

A customer uses Recovery manager central for Vmware (RMC-V).They need to ability to perform granular recovery of application item directly from backups...Which solution integrates with RMC-V to provide the desired requirements?

- A. Veeam Backup & Replication
- B. Netbackup
- C. StoreOnce cloudbank
- D. CommVault

**Answer:** A

#### NEW QUESTION 51

- (Exam Topic 2)

Match the data access type in a SAN fabric to the correct description.

Data Access Type	Description
Centralized	<input type="text"/> Data access between a local server and a storage system connected to the same switch
Distributed	<input type="text"/> Data access between multiple, dispersed servers and one storage system
Local	<input type="text"/> Data access between multiple, dispersed servers and multiple storage systems

- A. Mastered
- B. Not Mastered

**Answer:** A

**Explanation:**

Description
<input type="text"/> Local Data access between a local server and a storage system connected to the same switch
<input type="text"/> Centralized Data access between multiple, dispersed servers and one storage system
<input type="text"/> Distributed Data access between multiple, dispersed servers and multiple storage systems

#### NEW QUESTION 53

- (Exam Topic 2)

You are designing a new HPE 3PAR StoreServ all-flash array for the customer.. Which ratio should you expect to have the highest efficiency?

- A. Read/write ratio
- B. Reclamation ratio
- C. Compaction Ratio
- D. Thin provisioning ratio

**Answer:** C

**NEW QUESTION 57**

- (Exam Topic 2)

During which event will HPE 3par Storeserv persistent port feature provide transparent and uninterrupted failover (Select two)

- A. Loss of persistent cache
- B. B-series SAN switch upgrades
- C. Firmware upgrade
- D. Node maintenance or failure
- E. Loss of full-mesh cluster interconnect

**Answer:** CD

**NEW QUESTION 59**

- (Exam Topic 2)

What performance benefit is provided by using the HPE StoreVirtual DSM for Microsoft MPIO instead of the standard MPIO?

- A. The HPE DSM increases availability and reduces latency and throughput.
- B. The storage system, which holds a copy of the requested data, services the read I/Os.
- C. The iSCSI connections are blocked to non-critical nodes in the cluster by default.
- D. The storage system, which receives a copy of the data, does not service the write I/O.

**Answer:** B

**NEW QUESTION 62**

- (Exam Topic 2)

A customer has mission-critical applications that intermittently experience heavy disk I/O. The storage speed has the most impact on the application's performance. The customer does not want to dedicate SSD disks to these applications because additional performance is only needed periodically, and moving the volumes between tiers takes too long.

Which HPE StoreVirtual VSA feature can address this customer's challenge?

- A. Storage virtualization
- B. Space Reclamation
- C. Thin Provisioning
- D. Adaptive Optimization

**Answer:** D

**NEW QUESTION 64**

- (Exam Topic 2)

You are advising a customer on a new backup strategy to deploy HPE StoreOnce. What should you recommend to ensure the best storage utilization and performance?

- A. consolidate activity windows for housekeeping tasks
- B. size solution for a single backup device
- C. combine management and backup Ethernet traffic
- D. use separate backup targets for different data types

**Answer:** A

**NEW QUESTION 65**

- (Exam Topic 2)

Due to industry regulation a customer is required to store backup at a separate data center from the company's main data center. The customer application require fast backup and quick restore increase of data lose. Which solution allow the customer to meet both industry and application requirement?

- A. HPE storeServe 3par in main and secondary data center with RCIP replication between arrays
- B. Nimble AF series in main data center and Nimble SF series in secondary data center
- C. HPE Storeserve 3Par in main data center HPE StoreOnce in secondary data center with RMC
- D. HPR StoreServ 3PAR in main data center and HPE StoreOnce in both main and secondary data center.

**Answer:** C

**NEW QUESTION 68**

- (Exam Topic 2)

A customer's growing environment has a mix of HPE 3PAR StoreServ 8200 with 10K HDD, HPE 3PAR StoreServ 9450, and HPE 3PAR StoreServ 2080D with 3 tiers of storage deployed in the same data center. The customer needs to optimize performance by being able to move workloads to the most appropriate array as needed.

Which solution enables the customer to achieve this goal?

- A. HPE OneView to automate cpg migration based on user defined policies.
- B. HPE 3PAR Remote Copy in a Synchronous Long Distance topology.
- C. HPE Smart SAN to provide autonomic federated management.
- D. HPE 3PAR Peer Motion with SSMC to manage storage federation.

**Answer:** D



**NEW QUESTION 71**

- (Exam Topic 2)

You are adding a new host for an HPE 3PAR StoreServ proof-of-concept .In addition to the host name ,What is the minimum information that is required to create a host profile?

- A. Host Persona
- B. Host MAC
- C. Host set
- D. Host WWN

**Answer:** D

**NEW QUESTION 76**

- (Exam Topic 2)

A customer is looking for a centralized file-sharing solution that can provide print services in addition to 15TB of storage.

Which solution component should you recommend?

- A. FC switch
- B. NAS
- C. FC-based array
- D. Disk enclosure with integrated SAS switch

**Answer:** B

**NEW QUESTION 77**

- (Exam Topic 2)

You are planning an upgrade to a customer's existing HPE 3PAR StoreServ 8200 to include 4-port 16Gb FC adapters. The servers are zoned to see the storage via four paths. The customer is concerned about storage availability during the upgrade.

Which statement is correct about performing this upgrade?

- A. When NPIV is enabled, the HPE 3PAR Port persistence will show all four paths to the servers.
- B. The MPIO service will do a failover, and the servers will continue to have access via two paths.
- C. Windows servers require host explorer is installed to ensure MPIO is unaffected.
- D. As long as MEM driver is installed on VMware vSphere, no path failures are seen.

**Answer:** A

**NEW QUESTION 79**

- (Exam Topic 2)

A customer need a new storage system for visual desktop infrastructure environment to reduce the time required to provision new desktop. Which HPE solution should you recommended to fulfill this customers requirements?

- A. Snapclones on HPE MSA 2040
- B. SmartClone on HPE store virtual VSA(54)
- C. Storage pool on HPE store Easy
- D. Virtual Copy on HPE 3Par storeServ

**Answer:** B

**NEW QUESTION 82**

- (Exam Topic 2)

Which protocols are currently used in the front end by HPE 3PAR StoreServ systems? (Choose two.)

- A. iSCSI
- B. Infiniband
- C. SAS
- D. NVMe
- E. FC

**Answer:** AE

**NEW QUESTION 84**

- (Exam Topic 2)

A customer need to implement a new SAN fabric for their growing environment .The new SAN should provide a high performance and port-efficient network with many-to-many connectivity .Because of changing requirement and the possible acquisition of another company in the near future. The customer cannot predict the I/O traffic pattern within the SAN .The customer also concerned about availability. Which type of SAN topology should you recommend?

- A. Core-edge fabric
- B. Single switch fabric
- C. Cascaded fabric
- D. Meshed fabric

**Answer:** D

**NEW QUESTION 89**

- (Exam Topic 2)

Which resource provides configurations for HPE tested and referenced configurations in a software-defined storage environment?

- A. HPE Storage Sizer
- B. One Config Advanced
- C. NinjaStars
- D. StoreVirtual VSA Ready Nodes

**Answer:** D

**Explanation:**

HPE StoreVirtual VSA Ready Nodes—HPE tested reference configurations on HPE ProLiant servers that address typical virtualization and remote office use cases, and deployment of converged solutions.

**NEW QUESTION 93**

- (Exam Topic 2)

An HPE 3PAR StoreServ 9000 All-Flash Array customer plans to deploy a secondary array 20 km away from their primary array to enable storage replication over a dark fibre. Their existing environment consists of one HPE Synergy Frame 12000, HPE SN6000B Fibre Channel Switches, HPE FlexFabric 5700 Switch Series, and HPE StoreOnce Systems.

Which HPE license is required to meet the customer's technical requirements?

- A. Intelligent Resilient Framework licenses
- B. HPE StoreOnce Replication
- C. Extended Fabric
- D. HPE 3PAR Remote Copy

**Answer:** D

**NEW QUESTION 95**

- (Exam Topic 2)

A customer need a backup solution to their virtualized environment .The backup solution must be agentless ,hypervise independent and integrated with HPE storage solutions. The solution must support Nimble snapshot and replication management. What products meets the customer requirement?

- A. HPE storeOnce Recovery manager central
- B. Commvault Simpana Intellisnap
- C. Micro Focus Data Protector
- D. Veem Backup and Replication

**Answer:** D

**NEW QUESTION 97**

- (Exam Topic 2)

In an ISCSI based storage system Proof-Of-Concept project ,the customer is not satisfied with the performance of their video streaming application .What would you recommended to the customer to optimize the excisting environment?

- A. Enable hardware ISCSI initiator
- B. Increase the switch buffer to buffer credits
- C. Enable jumbo frames on required components
- D. Consolidate the heterogeneous switches in the network

**Answer:** C

**NEW QUESTION 101**

- (Exam Topic 2)

A customer need to server 40TB via file protocols including SMB and FTP to a board range of client operating system in one location .security protocol dictate that data must be encrypted with FIPS 140-2 compliance. Which HPE storage solution you recommend?

- A. HPE MSA 2052 storage with HPE StoreEasy 3850 Gateway
- B. HPE 3PAR 8200 using self-encrypting drive with 3PAR file persona
- C. HPE StoreOnce 5500with data in fight encryption .
- D. HPE XP7 storage with encryption ready disk adapters

**Answer:** B

**NEW QUESTION 103**

- (Exam Topic 2)

A customer currently has a CS1000H and wants to upgrade to a CS3000. What must be considered before upgrading?

- A. This upgrade is disruptive and needs planned downtime.
- B. A capacity upgrade to a fully populated array has to be performed first.
- C. Timeless storage support is not offered for CS1000H entry-level systems.
- D. A controller upgrade to a CS1000F has to be performed first.

**Answer:** B

**NEW QUESTION 106**

.....

## Thank You for Trying Our Product

\* 100% Pass or Money Back

All our products come with a 90-day Money Back Guarantee.

\* One year free update

You can enjoy free update one year. 24x7 online support.

\* Trusted by Millions

We currently serve more than 30,000,000 customers.

\* Shop Securely

All transactions are protected by VeriSign!

**100% Pass Your HPE0-J68 Exam with Our Prep Materials Via below:**

<https://www.certleader.com/HPE0-J68-dumps.html>