



Microsoft

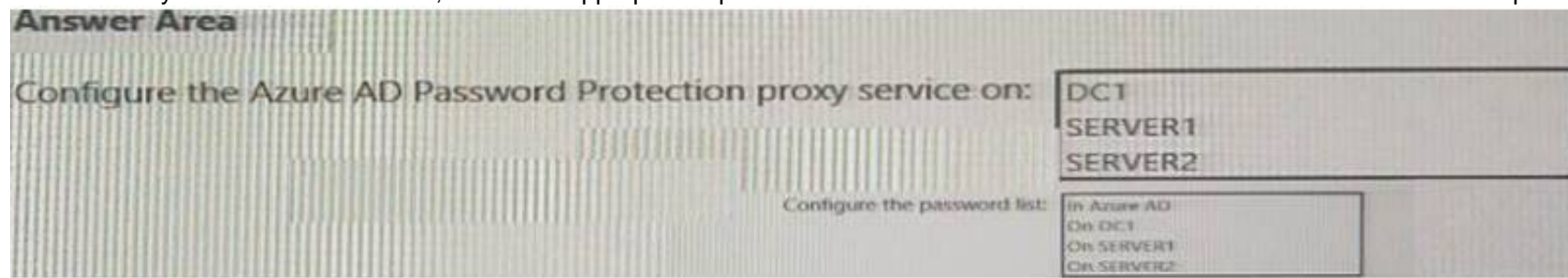
Exam Questions SC-300

Microsoft Identity and Access Administrator

NEW QUESTION 1

- (Exam Topic 1)

You need to implement password restrictions to meet the authentication requirements. You install the Azure AD password Protection DC agent on DC1. What should you do next? To answer, select the appropriate options in the answer area. NOTE: Each correct selection is worth one point.



- A. Mastered
- B. Not Mastered

Answer: A

Explanation:

Server1 On DC1

NEW QUESTION 2

- (Exam Topic 1)

You need to meet the authentication requirements for leaked credentials. What should you do?

- A. Enable federation with PingFederate in Azure AD Connect.
- B. Configure Azure AD Password Protection.
- C. Enable password hash synchronization in Azure AD Connect.
- D. Configure an authentication method policy in Azure AD.

Answer: C

Explanation:

Reference:

<https://docs.microsoft.com/en-us/azure/security/fundamentals/steps-secure-identity>

NEW QUESTION 3

- (Exam Topic 1)

You need to track application access assignments by using Identity Governance. The solution must meet the delegation requirements. What should you do first?

- A. Modify the User consent settings for the enterprise applications.
- B. Create a catalog.
- C. Create a program.
- D. Modify the Admin consent requests settings for the enterprise applications.

Answer: B

Explanation:

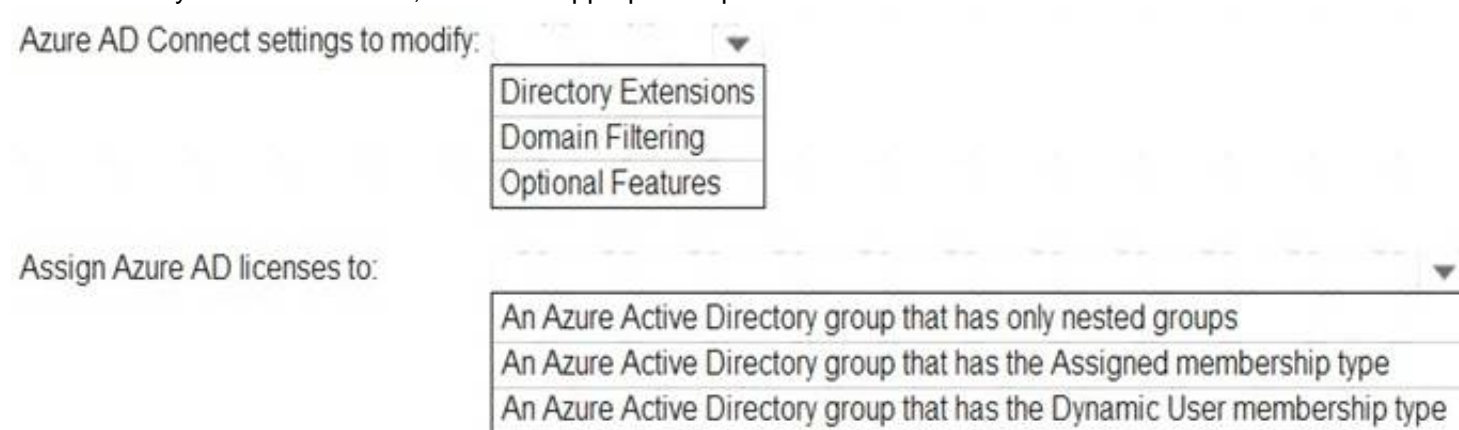
Reference:

<https://docs.microsoft.com/en-us/azure/active-directory/governance/entitlement-management-overview>

NEW QUESTION 4

- (Exam Topic 1)

You need to configure the assignment of Azure AD licenses to the Litware users. The solution must meet the licensing requirements. What should you do? To answer, select the appropriate options in the answer area. NOTE: Each correct selection is worth one point.



- A. Mastered
- B. Not Mastered

Answer: A

Explanation:

Litware recently added a custom user attribute named LWLicenses to the litware.com Active Directory forest. Litware wants to manage the assignment of Azure AD licenses by modifying the value of the LWLicenses attribute. Users who have the appropriate value for LWLicenses must be added automatically to a Microsoft 365 group that has the appropriate licenses assigned.

NEW QUESTION 5

- (Exam Topic 1)

You need to configure the detection of multi staged attacks to meet the monitoring requirements. What should you do?

- A. Customize the Azure Sentinel rule logic.
- B. Create a workbook.
- C. Add an Azure Sentinel playbook.
- D. Add Azure Sentinel data connectors.

Answer: D

NEW QUESTION 6

- (Exam Topic 1)

You need to configure the detection of multi-staged attacks to meet the monitoring requirements. What should you do?

- A. Customize the Azure Sentinel rule logic.
- B. Create a workbook.
- C. Add Azure Sentinel data connectors.
- D. Add an Azure Sentinel playbook.

Answer: A

NEW QUESTION 7

- (Exam Topic 2)

You create a Log Analytics workspace.

You need to implement the technical requirements for auditing. What should you configure in Azure AD?

- A. Company branding
- B. Diagnostics settings
- C. External Identities
- D. App registrations

Answer: B

Explanation:

Reference:

<https://docs.microsoft.com/en-us/azure/active-directory/reports-monitoring/overview-monitoring>

NEW QUESTION 8

- (Exam Topic 2)

You need to locate licenses to the A. Datum users. The solution must need the technical requirements. Which type of object should you create?

- A. A Dynamo User security group
- B. An OU
- C. A distribution group
- D. An administrative unit

Answer: A

NEW QUESTION 9

- (Exam Topic 2)

You need to implement the planned changes and technical requirements for the marketing department. What should you do? To answer, select the appropriate options in the answer area.

NOTE: Each correct selection is worth one point.

To configure user access:

- ☐ An access package
- ☐ An access review
- ☐ A conditional access policy

To enable collaboration with fabrikam.com:

- ☐ An accepted domain
- ☐ A connected organization
- ☐ A custom domain name

- A. Mastered
- B. Not Mastered

Answer: A

Explanation:

Reference:

<https://docs.microsoft.com/en-us/azure/active-directory/governance/entitlement-management-organization>

NEW QUESTION 10

- (Exam Topic 3)

You need implement the planned changes for application access to organizational data. What should you configure?

- A. authentication methods
- B. the User consent settings
- C. access packages
- D. an application proxy

Answer: D

NEW QUESTION 10

- (Exam Topic 3)

You need to implement the planned changes for Package!. Which users can create and manage the access review?

- A. User3 only
- B. User4 only
- C. User5 only
- D. User3 and User4
- E. User3 and User5
- F. User4and User5

Answer: C

NEW QUESTION 13

- (Exam Topic 3)

You need to implement the planned changes for litware.com. What should you configure?

- A. Azure AD Connect cloud sync between the Azure AD tenant and litware.com
- B. Azure AD Connect to include the litware.com domain
- C. staging mode in Azure AD Connect for the litware.com domain

Answer: C

NEW QUESTION 15

- (Exam Topic 4)

Your network contains an Active Directory forest named contoso.com that is linked to an Azure Active Directory (Azure AD) tenant named contoso.com by using Azure AD Connect.

You need to prevent the synchronization of users who have the extensionAttribute15 attribute set to NoSync.

What should you do in Azure AD Connect?

- A. Create an inbound synchronization rule for the Windows Azure Active Directory connector.
- B. Configure a Full Import run profile.
- C. Create an inbound synchronization rule for the Active Directory Domain Services connector.
- D. Configure an Export run profile.

Answer: C

Explanation:

<https://docs.microsoft.com/en-us/azure/active-directory/hybrid/how-to-connect-sync-change-the-configuration>

NEW QUESTION 17

- (Exam Topic 4)

You have an Azure Active Directory (Azure AD) tenant named contoso.com that contains an Azure AD enterprise application named App1.

A contractor uses the credentials of user1@outlook.com.

You need to ensure that you can provide the contractor with access to App1. The contractor must be able to authenticate as user1@outlook.com.

What should you do?

- A. Run the New-AzureADMSInvitation cmdlet.
- B. Configure the External collaboration settings.
- C. Add a WS-Fed identity provider.
- D. Implement Azure AD Connect.

Answer: A

Explanation:

Reference:

[https://docs.microsoft.com/en-us/active-directory/external-identities/b2b-quickstart-add-guest-users-portal](https://docs.microsoft.com/en-us/azure/active-directory/external-identities/b2b-quickstart-add-guest-users-portal) <https://docs.microsoft.com/en-us/powershell/module/azuread/new-azureadmsinvitation?view=azureadps-2.0>

NEW QUESTION 21


- (Exam Topic 4)
HOTSPOT

You have an Azure Active Directory (Azure AD) tenant that contains Azure AD Privileged Identity Management (PIM) role settings for the User administrator role as shown in the following exhibit.

... ContosoAzureAD > Identity Governance > Privileged Identity Management > ContosoAzureAD > User Administrator >

Role setting details - User Administrator

Privileged Identity Management | Azure AD roles

 Edit

Activation

SETTING	STATE
Activation maximum duration (hours)	8 hour(s)
Require justification on activation	Yes
Require ticket information on activation	No
On activation, require Azure MFA	Yes
Require approval to activate	Yes
Approvers	None

Assignment

SETTING	STATE
Allow permanent eligible assignment	No
Expire eligible assignments after	15 day(s)
Allow permanent active assignment	No
Expire active assignments after	1 month(s)
Require Azure Multi-Factor Authentication on active assignment	No
Require justification on active assignment	No

Use the drop-down menus to select the answer choice that completes each statement based on the information presented in the graphic.
NOTE: Each correct selection is worth one point.

A user who requires access to the User administration role must perform multi-factor authentication (MFA) every [answer choice].

8 hours

15 days

1 month

Before an eligible user can perform a task that requires the User administrator role, the activation must be approved by a [answer choice].

global administrator only

global administrator or privileged role administrator

permanently assigned user administrator

privileged role administrator only

- A. Mastered
- B. Not Mastered

Answer: A

Explanation:

Reference:
<https://docs.microsoft.com/en-us/azure/active-directory/privileged-identity-management/pim-configure>
<https://docs.microsoft.com/en-us/azure/active-directory/privileged-identity-management/pim-deployment-plan>

NEW QUESTION 22

- (Exam Topic 4)

You have a Microsoft 365 E5 tenant. You purchase a cloud app named App1.

You need to enable real-time session-level monitoring of App1 by using Microsoft Cloud app Security.

Which four actions should you perform in sequence? To answer, move the appropriate actions from the list of actions to the answer area and arrange them in the correct order.

Actions

From Microsoft Cloud App Security, create a session policy.

Publish App1 in Azure Active Directory (Azure AD).

Create a conditional access policy that has session controls configured.

From Microsoft Cloud App Security, modify the Connected apps settings for App1.

Answer Area

- A. Mastered
- B. Not Mastered

Answer: A

Explanation:

A picture containing application Description automatically generated

Reference:

<https://docs.microsoft.com/en-us/cloud-app-security/proxy-deployment-any-app> <https://docs.microsoft.com/en-us/cloud-app-security/session-policy-aad>

NEW QUESTION 25

- (Exam Topic 4)

Your company has an Azure Active Directory (Azure AD) tenant named contoso.com. The company has a business partner named Fabrikam, Inc.

Fabrikam uses Azure AD and has two verified domain names of fabrikam.com and litwareinc.com. Both

domain names are used for Fabrikam email addresses.

You plan to create an access package named package1 that will be accessible only to the users at Fabrikam. You create a connected organization for Fabrikam.

You need to ensure that the package1 will be accessible only to users who have fabrikam.com email addresses. What should you do? To answer, select the appropriate options in the answer area.

NOTE: Each correct selection is worth one point.

To allow access for users who have fabrikam.com email addresses, configure:

An access package assignment in Identity Governance

An access package policy in Identity Governance

A conditional access policy in Azure AD

The External collaboration settings in Azure AD

To block access for users who have litwareinc.com email addresses, configure:

An access package assignment in Identity Governance

An access package policy in Identity Governance

A conditional access policy in Azure AD

The External collaboration settings in Azure AD

- A. Mastered
- B. Not Mastered

Answer: A

Explanation:

Text Description automatically generated

Reference:

<https://docs.microsoft.com/en-us/azure/active-directory/governance/entitlement-management-access-package-re> <https://docs.microsoft.com/en-us/azure/active-directory/governance/entitlement-management-access-package-cr>

NEW QUESTION 26

- (Exam Topic 4)

You have an Azure Active Directory (Azure AD) tenant that uses conditional access policies.

You plan to use third-party security information and event management (SIEM) to analyze conditional access usage.

You need to download the Azure AD log that contains conditional access policy data. What should you export from Azure AD?

- A. sign-ins in JSON format
- B. sign-ins in CSV format
- C. audit logs in JSON format
- D. audit logs in CSV format

Answer: C

Explanation:

Reference:

<https://docs.microsoft.com/en-us/azure/active-directory/reports-monitoring/concept-audit-logs>

NEW QUESTION 31

- (Exam Topic 4)

You have an Azure Active Directory (Azure AD) tenant that contains a user named User1. An administrator deletes User1. You need to identify the following:

- How many days after the account of User1 is deleted can you restore the account?
- Which is the least privileged role that can be used to restore User1?

What should you identify? To answer, select the appropriate options in the answer area. NOTE: Each correct selection is worth one point.

Answer Area



Number of days: 15, 30, 90, 180

Role: User administrator, Network administrator, Helpdesk administrator, Domain name administrator

- A. Mastered
- B. Not Mastered

Answer: A

Explanation:

Answer Area



Number of days: 15, 30, 90, 180

Role: User administrator, Network administrator, Helpdesk administrator, Domain name administrator

NEW QUESTION 35

- (Exam Topic 4)

You have an Azure Active Directory (Azure AD) tenant.

You configure self-service password reset (SSPR) by using the following settings:

- Require users to register when signing in: Yes
- Number of methods required to reset: 1

What is a valid authentication method available to users?

- A. home prions
- B. mobile app notification
- C. a mobile app code
- D. an email to an address in your organization

Answer: A

NEW QUESTION 37

- (Exam Topic 4)

You have an Azure Active Directory (Azure AD) tenant named contoso.com that has Azure AD Identity Protection policies enforced.

You create an Azure Sentinel instance and configure the Azure Active Directory connector.

You need to ensure that Azure Sentinel can generate incidents based on the risk alerts raised by Azure AD Identity Protection.

What should you do first?

- A. Add an Azure Sentinel data connector.
- B. Configure the Notify settings in Azure AD Identity Protection.
- C. Create an Azure Sentinel playbook.
- D. Modify the Diagnostics settings in Azure AD.

Answer: A

Explanation:

Reference:

<https://docs.microsoft.com/en-us/azure/sentinel/connect-azure-ad-identity-protection>

NEW QUESTION 38

- (Exam Topic 4)

You have an Azure Active Directory Premium P2 tenant. You create a Log Analytics workspace.

You need to ensure that you can view Azure Active Directory (Azure AD) audit log information by using Azure Monitor.

What should you do first?

- A. Run the Set-AzureADTenantDetail cmdlet.
- B. Create an Azure AD workbook.
- C. Modify the Diagnostics settings for Azure AD.
- D. Run the Get-AzureADAuditDirectoryLogs cmdlet.

Answer: C

Explanation:

Reference:

<https://docs.microsoft.com/en-us/azure/active-directory/reports-monitoring/howto-integrate-activity-logs-with-lo>

NEW QUESTION 39

- (Exam Topic 4)

You use Azure Monitor to analyze Azure Active Directory (Azure AD) activity logs.

You receive more than 100 email alerts each day for tailed Azure AD user sign-in attempts. You need to ensure that a new security administrator receives the alerts instead of you. Solution: From Azure monitor, you modify the action group. Does this meet the goal?

- A. Yes
- B. No

Answer: B

NEW QUESTION 44

- (Exam Topic 4)

You have a Microsoft 365 tenant.

Sometimes, users use external, third-party applications that require limited access to the Microsoft 365 data of the respective user. The users register the applications in Azure Active Directory (Azure AD).

You need to receive an alert if a registered application gains read and write access to the users' email. What should you do? To answer, select the appropriate options in the answer area.

NOTE: Each correct selection is worth one point.

Tool to use:

Azure AD Identity Protection
Identity Governance
Microsoft Cloud App Security
Microsoft Endpoint Manager

Policy type to create:

App discovery
App protection
Conditional access
OAuth app
Sign-in risk
User risk

- A. Mastered
- B. Not Mastered

Answer: A

Explanation:

Reference:

<https://docs.microsoft.com/en-us/cloud-app-security/app-permission-policy>

NEW QUESTION 48

- (Exam Topic 4)

You have an Azure Active Directory (Azure AD) tenant that contains a user named User1.

You need to ensure that User1 can create new catalogs and add resources to the catalogs they own. What should you do?

- A. From the Roles and administrators blade, modify the Service support administrator role.
- B. From the identity Governance blade, modify the Entitlement management settings.
- C. From the Identity Governance blade, modify the roles and administrators for the General catalog
- D. From the Roles and administrators blade, modify the Groups administrator role.

Answer: B

NEW QUESTION 52

- (Exam Topic 4)

You have an Azure Active Directory (Azure AD) tenant that contains the following group:

- > Name: Group1
- > Members: User1, User2
- > Owner: User3

On January 15, 2021, you create an access review as shown in the exhibit. (Click the Exhibit tab.)

Create an access review

Review name *

Description ⓘ

Start date *

Frequency

Duration (in days) ⓘ
14

End ⓘ
☐ Never ☒ End by ☐ Occurrences

Number of times

End date *

Users

Users to review

Scope
☐ Guest users only ☒ Everyone

Group *

Reviewers

Reviewers

Programs

Link to program

☐ Upon completion settings

☐ Advanced settings

Start

Users answer the Review1 question as shown in the following table.

User	Date	Do you still need access to Group1?
User1	January 17, 2021	Yes
User2	January 20, 2021	No

For each of the following statements, select Yes if the statement is true. Otherwise, select No.

NOTE: Each correct selection is worth one point.

Statements	Yes	No
On February 5, 2021, User1 can answer the Review1 question again.	<input type="radio"/>	<input type="radio"/>
On January 25, 2021, User2 can answer the Review1 question again.	<input type="radio"/>	<input type="radio"/>
On January 22, 2021, User3 can answer the Review1 question.	<input type="radio"/>	<input type="radio"/>

- A. Mastered
- B. Not Mastered

Answer: A

Explanation:

A screenshot of a computer Description automatically generated with low confidence

Reference:

<https://docs.microsoft.com/en-us/azure/active-directory/governance/review-your-access>

NEW QUESTION 56

- (Exam Topic 4)

You have a Microsoft 365 tenant.

You have an Active Directory domain that syncs to the Azure Active Directory (Azure AD) tenant. Users connect to the internet by using a hardware firewall at your company. The users authenticate to the firewall by using their Active Directory credentials.

You plan to manage access to external applications by using Azure AD.

You need to use the firewall logs to create a list of unmanaged external applications and the users who access them.

What should you use to gather the information?

- A. Cloud App Discovery in Microsoft Defender for Cloud Apps
- B. enterprise applications in Azure AD
- C. access reviews in Azure AD
- D. Application Insights in Azure Monitor

Answer: A

NEW QUESTION 58

- (Exam Topic 4)

Your network contains an on-premises Active Directory domain that syncs to an Azure Active Directory (Azure AD) tenant. The tenant contains the users shown in the following table.

Name	Type	Directory synced
User1	User	No
User2	User	Yes
User3	Guest	No

All the users work remotely.

Azure AD Connect is configured in Azure AD as shown in the following exhibit.

PROVISION FROM ACTIVE DIRECTORY



Azure AD Connect cloud provisioning

This feature allows you to manage provisioning from the cloud.

[Manage provisioning \(Preview\)](#)

Azure AD Connect sync

Sync Status	Enabled
Last Sync	Less than 1 hour ago
Password Hash Sync	Enabled

USER SIGN IN



Federation	Disabled	0 domains
Seamless single sign-on	Disabled	0 domains
Pass-through authentication	Enabled	2 agents

Connectivity from the on-premises domain to the internet is lost. Which users can sign in to Azure AD?

- A. User1 and User3 only
- B. User1 only
- C. User1, User2, and User3
- D. User1 and User2 only

Answer: A

Explanation:

Reference:

<https://docs.microsoft.com/en-us/azure/active-directory/hybrid/how-to-connect-pta-current-limitations>

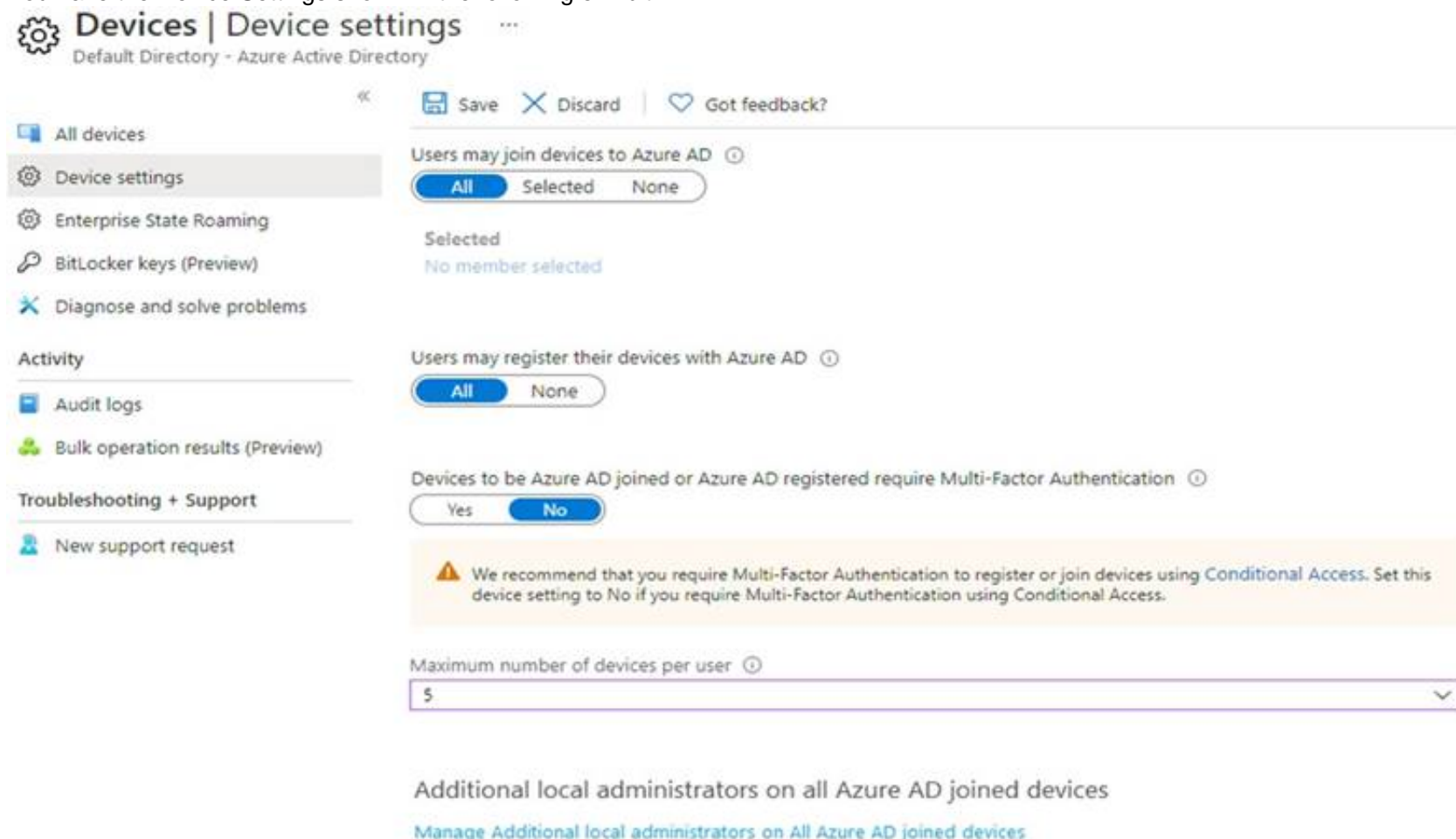
NEW QUESTION 62

- (Exam Topic 4)

You have an Azure Active Directory (Azure AD) tenant that has an Azure Active Directory Premium Plan 2 license. The tenant contains the users shown in the following table.

Name	Role
Admin1	Cloud device administrator
Admin2	Device administrator
User1	None

You have the Device Settings shown in the following exhibit.



The screenshot shows the 'Devices | Device settings' page in the Azure AD portal. The left sidebar contains navigation options: All devices, Device settings (selected), Enterprise State Roaming, BitLocker keys (Preview), Diagnose and solve problems, Activity, Audit logs, Bulk operation results (Preview), Troubleshooting + Support, and New support request. The main content area shows settings for 'Default Directory - Azure Active Directory'. At the top, there are buttons for 'Save', 'Discard', and 'Got feedback?'. Below this, there are three sections: 1. 'Users may join devices to Azure AD' with buttons for 'All' (selected), 'Selected', and 'None'. 2. 'Users may register their devices with Azure AD' with buttons for 'All' (selected) and 'None'. 3. 'Devices to be Azure AD joined or Azure AD registered require Multi-Factor Authentication' with buttons for 'Yes' and 'No' (selected). A warning message states: 'We recommend that you require Multi-Factor Authentication to register or join devices using Conditional Access. Set this device setting to No if you require Multi-Factor Authentication using Conditional Access.' At the bottom, there is a dropdown menu for 'Maximum number of devices per user' set to '5'. A link at the bottom says 'Additional local administrators on all Azure AD joined devices' with a sub-link 'Manage Additional local administrators on All Azure AD joined devices'.

User1 has the devices shown in the following table.

Name	Operating system	Device identity
Device1	Windows 10	Azure AD joined
Device2	iOS	Azure AD registered
Device3	Windows 10	Azure AD registered
Device4	Android	Azure AD registered

For each of the following statements, select Yes if the statement is true. Otherwise, select No.
 NOTE: Each correct selection is worth one point.

Statements	Yes	No
User1 can join four additional Windows 10 devices to Azure AD.	<input type="radio"/>	<input type="radio"/>
Admin1 can set Devices to be Azure AD joined or Azure AD registered require Multi-Factor Authentication to Yes .	<input type="radio"/>	<input type="radio"/>
Admin2 is a local administrator on Device3.	<input type="radio"/>	<input type="radio"/>

- A. Mastered
- B. Not Mastered

Answer: A

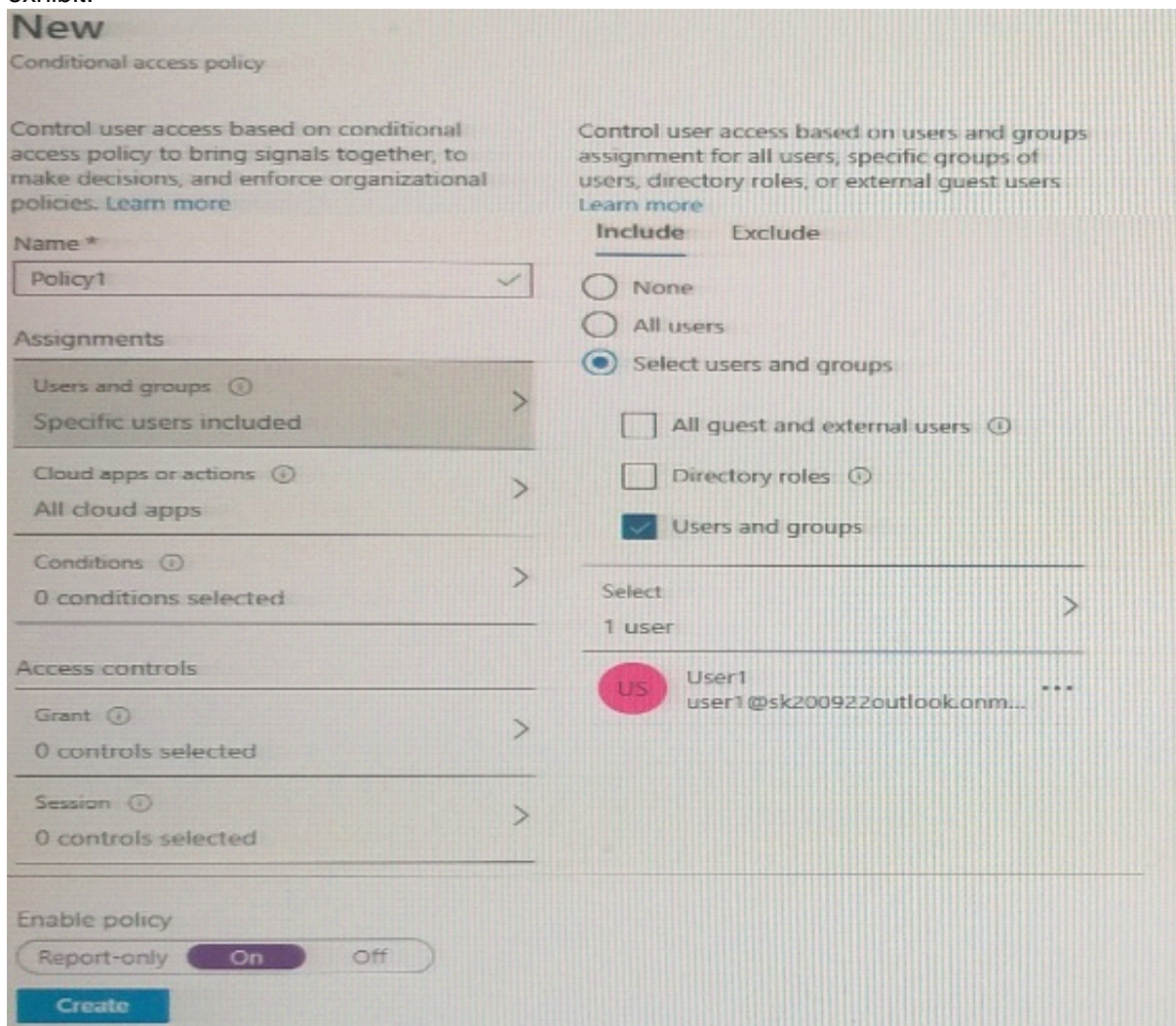
Explanation:

Box 1: Yes
 Users may join 5 devices to Azure AD.
 Box 2: Yes
 Box 3: No
 An additional local device administrator has not been applied Reference:
<https://docs.microsoft.com/en-us/azure/active-directory/devices/device-management-azure-portal>

NEW QUESTION 65

- (Exam Topic 4)

You have an Azure Active Directory (Azure AD) tenant that has Security defaults disabled. You are creating a conditional access policy as shown in the following exhibit.



New
 Conditional access policy

Control user access based on conditional access policy to bring signals together, to make decisions, and enforce organizational policies. [Learn more](#)

Name *
 Policy1 ✓

Assignments

- Users and groups ⓘ
 Specific users included >
- Cloud apps or actions ⓘ
 All cloud apps >
- Conditions ⓘ
 0 conditions selected >
- Access controls
 Grant ⓘ
 0 controls selected >
- Session ⓘ
 0 controls selected >

Control user access based on users and groups assignment for all users, specific groups of users, directory roles, or external guest users. [Learn more](#)

Include Exclude

- ☐ None
- ☐ All users
- ☒ Select users and groups
 - ☐ All guest and external users ⓘ
 - ☐ Directory roles ⓘ
 - ☒ Users and groups

Select
 1 user >

- US User1
 user1@sk200922outlook.onm... ***

Enable policy
 Report-only On Off

Create

Use the drop-down menus to select the answer choice that completes each statement based on the information presented in the graphic.
 NOTE: Each correct selection is worth one point.

- A. Group1, App1, Contributor, and Role1
- B. Hotel and Contributor only
- C. Group1, Role1, and Contributor only
- D. Group1 only

Answer: A

Explanation:

Access reviews require an Azure AD Premium P2 license.

Access reviews for Group1 and App1 can be configured in Azure AD Access Reviews.

Access reviews for the Contributor role and Role1 would need to be configured in Privileged Identity Management (PIM). PIM is included in Azure AD Premium P2.

Reference:

<https://docs.microsoft.com/en-us/azure/active-directory/privileged-identity-management/pim-how-to-start-securi> <https://docs.microsoft.com/en-us/azure/active-directory/governance/access-reviews-overview>

NEW QUESTION 81

- (Exam Topic 4)

You use Azure Monitor to analyze Azure Active Directory (Azure AD) activity logs.

You receive more than 100 email alerts each day for tailed Azure AD user sign-in attempts. You need to ensure that a new security administrator receives the alerts instead of you. Solution: From Azure AD, you create an assignment for the Insights at administrator role. Does this meet the goal?

- A. Yes
- B. No

Answer: B

NEW QUESTION 86

- (Exam Topic 4)

Note: This question is part of a series of questions that present the same scenario. Each question in the series contains a unique solution that might meet the stated goals. Some question sets might have more than one correct solution, while others might not have a correct solution.

After you answer a question in this section, you will NOT be able to return to it. As a result, these questions will not appear in the review screen.

You have an Azure Active Directory (Azure AD) tenant that syncs to an Active Directory forest.

You discover that when a user account is disabled in Active Directory, the disabled user can still authenticate to Azure AD for up to 30 minutes.

You need to ensure that when a user account is disabled in Active Directory, the user account is immediately prevented from authenticating to Azure AD.

Solution: You configure conditional access policies. Does this meet the goal?

- A. Yes
- B. No

Answer: B

Explanation:

Reference:

<https://docs.microsoft.com/en-us/azure/active-directory/hybrid/choose-ad-authn>

NEW QUESTION 91

- (Exam Topic 4)

You have an Azure Active Directory (Azure AD) tenant named contoso.com.

You implement entitlement management to provide resource access to users at a company named Fabrikam, Inc. Fabrikam uses a domain named fabrikam.com.

Fabrikam users must be removed automatically from the tenant when access is no longer required. You need to configure the following settings:

- Block external user from signing in to this directory: No
 - Remove external user: Yes
 - Number of days before removing external user from this directory: 90
- What should you configure on the Identity Governance blade?

- A. Access packages
- B. Settings
- C. Terms of use
- D. Access reviews

Answer: B

Explanation:

Reference:

<https://docs.microsoft.com/en-us/azure/active-directory/governance/entitlement-management-external-users>

NEW QUESTION 96

- (Exam Topic 4)

You have a Microsoft 365 subscription that contains the following:

- An Azure Active Directory (Azure AD) tenant that has an Azure Active Directory Premium P2 license
- A Microsoft SharePoint Online site named Site1
- A Microsoft Teams team named Team1

You need to create an entitlement management workflow to manage Site1 and Team1. What should you do first?

- A. Create an access package.
- B. Create a catalog.
- C. Create an administrative unit.
- D. Configure an app registration.

Answer: A

NEW QUESTION 100

- (Exam Topic 4)

You have a Microsoft 365 tenant that uses the domain named fabrikam.com. The Guest invite settings for Azure Active Directory (Azure AD) are configured as shown in the exhibit. (Click the Exhibit tab.)

Guest user access

Guest user access restrictions (Preview) ⓘ

[Learn more](#)

☐ Guest users have the same access as members (most inclusive)

☒ Guest users have limited access to properties and memberships of directory objects

☐ Guest user access is restricted to properties and memberships of their own directory objects (most restrictive)

Guest invite settings

Admins and users in the guest inviter role can invite ⓘ

☒ Yes ☐ No

Members can invite ⓘ

☒ Yes ☐ No

Guests can invite ⓘ

☐ Yes ☒ No

Email One-Time Passcode for guests ⓘ

[Learn more](#)

☒ Yes ☐ No

Enable guest self-service sign up via user flows (Preview) ⓘ

[Learn more](#)

☒ Yes ☐ No

Collaboration restrictions

☒ Allow invitations to be sent to any domain (most inclusive)

☐ Deny invitations to the specified domains

☐ Allow invitations only to the specified domains (most restrictive)

A user named bsmith@fabrikam.com shares a Microsoft SharePoint Online document library to the users shown in the following table.

Name	Email	Description
User1	User1@contoso.com	A guest user in fabrikam.com
User2	User2@outlook.com	A user who has never accessed resources in fabrikam.com
User3	User3@fabrkam.com	A user in fabrikam.com

Which users will be emailed a passcode?

- A. User2 only
- B. User1 only
- C. User1 and User2 only
- D. User1, User2, and User3

Answer: A

Explanation:

Reference:

<https://docs.microsoft.com/en-us/azure/active-directory/external-identities/one-time-passcode>

NEW QUESTION 102

- (Exam Topic 4)

You have an Azure Active Directory (Azure AD) tenant named contoso.com.

You plan to bulk invite Azure AD business-to-business (B2B) collaboration users.

Which two parameters must you include when you create the bulk invite? Each correct answer presents part of the solution

NOTE: Each correct selection is worth one point.

- A. email address
- B. redirection URL
- C. username

- D. shared key
- E. password

Answer: AB

Explanation:

Reference:

<https://docs.microsoft.com/en-us/azure/active-directory/external-identities/tutorial-bulk-invite>

NEW QUESTION 107

- (Exam Topic 4)

You have an Azure Active Directory (Azure AD) tenant named contoso.com that contains an Azure AD enterprise application named App1.

A contractor uses the credentials of user1@outlook.com.

You need to ensure that you can provide the contractor with access to App1. The contractor must be able to authenticate as user1@outlook.com.

What should you do?

- A. Run the New-AzADUser cmdlet.
- B. Configure the External collaboration settings.
- C. Add a WS-Fed identity provider.
- D. Create a guest user account in contoso.com.

Answer: D

Explanation:

Reference:

<https://docs.microsoft.com/en-us/azure/active-directory/external-identities/b2b-quickstart-add-guest-usersportal>

NEW QUESTION 111

- (Exam Topic 4)

You have a Microsoft 365 tenant.

All users must use the Microsoft Authenticator app for multi-factor authentication (MFA) when accessing Microsoft 365 services.

Some users report that they received an MFA prompt on their Microsoft Authenticator app without initiating a sign-in request.

You need to block the users automatically when they report an MFA request that they did not initiate.

Solution: From the Azure portal, you configure the Block/unblock users settings for multi-factor authentication (MFA).

Does this meet the goal?

- A. Yes
- B. No

Answer: B

Explanation:

You need to configure the fraud alert settings. Reference:

<https://docs.microsoft.com/en-us/azure/active-directory/authentication/howto-mfa-mfasettings>

NEW QUESTION 116

- (Exam Topic 4)

Your company recently implemented Azure Active Directory (Azure AD) Privileged Identity Management (PIM).

While you review the roles in PIM, you discover that all 15 users in the IT department at the company have permanent security administrator rights.

You need to ensure that the IT department users only have access to the Security administrator role when required.

What should you configure for the Security administrator role assignment?

- A. Expire eligible assignments after from the Role settings details
- B. Expire active assignments after from the Role settings details
- C. Assignment type to Active
- D. Assignment type to Eligible

Answer: D

Explanation:

Reference:

<https://docs.microsoft.com/en-us/azure/active-directory/privileged-identity-management/pim-configure>

NEW QUESTION 118

- (Exam Topic 4)

You have an Azure Active Directory (Azure AD) tenant that contains the users shown in the following table.

Name	Type	Directory synced
User1	Member	Yes
User2	Member	No
User3	Guest	No

For which users can you configure the Job title property and the Usage location property in Azure AD? To answer, select the appropriate options in the answer area.

NOTE: Each correct selection is worth one point.

Answer Area

Job title property:

User2 only
User1 and User2 only
User2 and User3 only
User1, User2, and User3

Usage location property:

User2 only
User1 and User2 only
User2 and User3 only
User1, User2, and User3

- A. Mastered
- B. Not Mastered

Answer: A

Explanation:

Answer Area

Job title property:

User2 only
User1 and User2 only
User2 and User3 only
User1, User2, and User3

Usage location property:

User2 only
User1 and User2 only
User2 and User3 only
User1, User2, and User3

NEW QUESTION 120

- (Exam Topic 4)

You configure a new Microsoft 365 tenant to use a default domain name of contoso.com.
You need to ensure that you can control access to Microsoft 365 resources by using conditional access policies.
What should you do first?

- A. Disable the User consent settings.
- B. Disable Security defaults.
- C. Configure a multi-factor authentication (MFA) registration policy.
- D. Configure password protection for Windows Server Active Directory.

Answer: B

Explanation:

Reference:
<https://docs.microsoft.com/en-us/azure/active-directory/fundamentals/concept-fundamentals-security-defaults>

NEW QUESTION 121

- (Exam Topic 4)

You have a Microsoft 365 tenant.
You create a named location named HighRiskCountries that contains a list of high-risk countries.
You need to limit the amount of time a user can stay authenticated when connecting from a high-risk country.
What should you configure in a conditional access policy? To answer, select the appropriate options in the answer area.
NOTE: Each correct selection is worth one point.

Answer Area

Configure HighRiskCountries by using:

A cloud app or action
A condition
A grant control
A session control

Configure Sign-in frequency by using:

A cloud app or action
A condition
A grant control
A session control

- A. Mastered
- B. Not Mastered

Answer: A

Explanation:

Graphical user interface, text, application Description automatically generated
Reference:
<https://docs.microsoft.com/en-us/azure/active-directory/conditional-access/location-condition> <https://docs.microsoft.com/en-us/azure/active-directory/conditional-access/concept-conditional-access-session>

NEW QUESTION 126

- (Exam Topic 4)

You have an Azure Active Directory (Azure AD) tenant that contains the objects shown in the following table.

Name	Type
User1	User
Guest1	Guest
Identity1	Managed identity

Which objects can you add as eligible in Azure Privileged identity Management (PIM) for an Azure AD role?

- A. User1 only
- B. User1 and Identity1 only
- C. User1, Guest1, and Identity
- D. User1 and Guest1 only

Answer: D

Explanation:

Reference:

<https://docs.microsoft.com/en-us/azure/active-directory/privileged-identity-management/pim-deployment-plan>

NEW QUESTION 128

- (Exam Topic 4)

You have an Azure Active Directory (Azure AD) tenant.

You need to review the Azure AD sign-ins log to investigate sign ins that occurred in the past. For how long does Azure AD store events in the sign-in log?

- A. 14 days
- B. 30 days
- C. 90 days
- D. 365 days

Answer: B

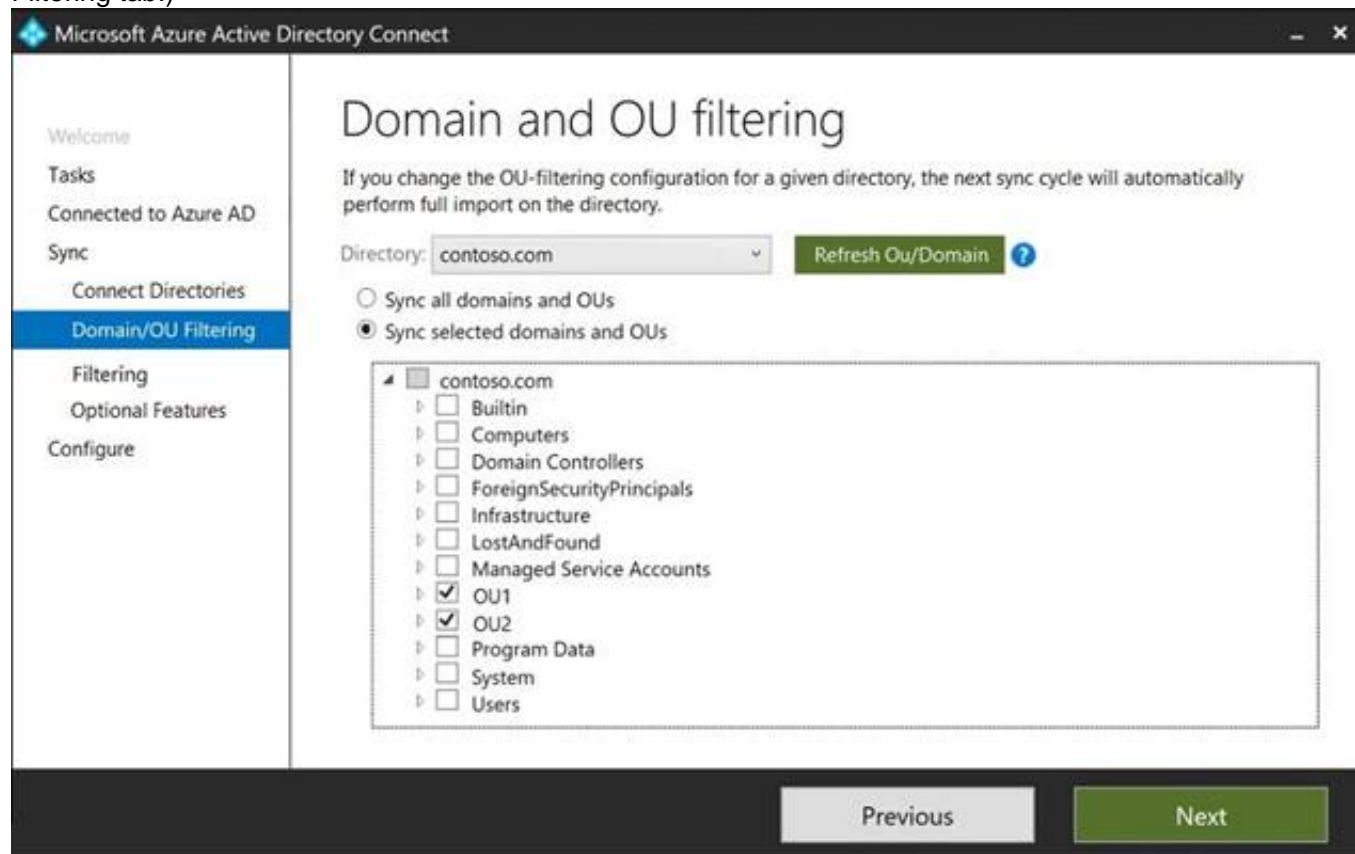
NEW QUESTION 133

- (Exam Topic 4)

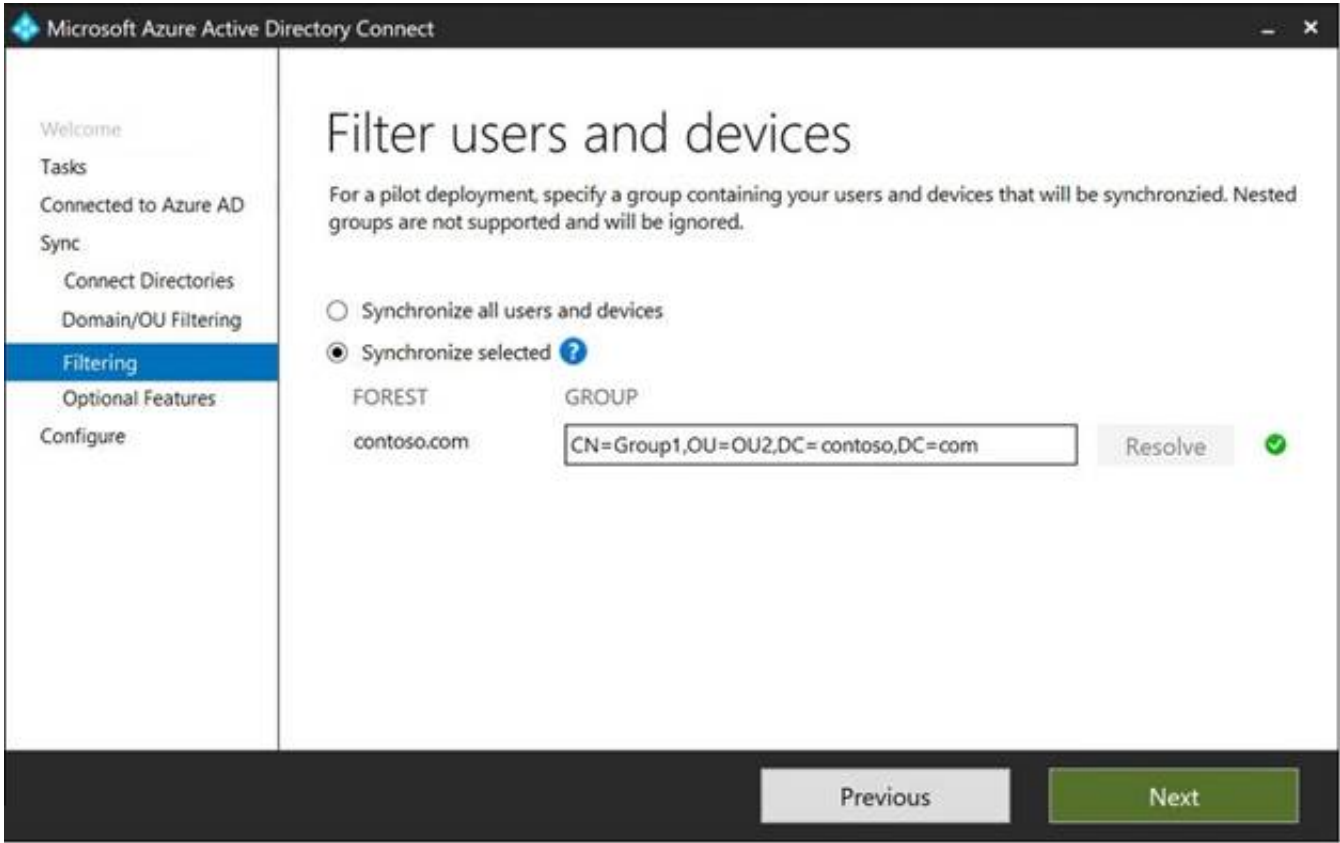
Your network contains an on-premises Active Directory domain named contoso.com. The domain contains the objects shown in the following table.

Name	Type	In organizational unit (OU)	Description
User1	User	OU1	User1 is a member of Group1.
User2	User	OU1	User2 is not a member of any groups.
Group1	Security group	OU2	User1 and Group2 are members of Group1.
Group2	Security group	OU1	Group2 is a member of Group1.

You install Azure AD Connect. You configure the Domain and OU filtering settings as shown in the Domain and OU Filtering exhibit. (Click the Domain and OU Filtering tab.)



You configure the Filter users and devices settings as shown in the Filter Users and Devices exhibit. (Click the Filter Users and Devices tab.)



For each of the following statements, select Yes if the statement is true. Otherwise, select No.

Statements	Yes	No
User1 syncs to Azure AD.	<input type="radio"/>	<input type="radio"/>
User2 syncs to Azure AD.	<input type="radio"/>	<input type="radio"/>
Group2 syncs to Azure AD.	<input type="radio"/>	<input type="radio"/>

- A. Mastered
- B. Not Mastered

Answer: A

Explanation:

Graphical user interface, application Description automatically generated
Only direct members of Group1 are synced. Group2 will sync as it is a direct member of Group1 but the members of Group2 will not sync.
Reference:
<https://docs.microsoft.com/en-us/azure/active-directory/hybrid/how-to-connect-install-custom>

NEW QUESTION 136

- (Exam Topic 4)
You have a Microsoft 365 tenant.
All users have mobile phones and laptops.
The users frequently work from remote locations that do not have Wi-Fi access or mobile phone connectivity. While working from the remote locations, the users connect their laptop to a wired network that has internet access.
You plan to implement multi-factor authentication (MFA).
Which MFA authentication method can the users use from the remote location?

- A. a verification code from the Microsoft Authenticator app
- B. security questions
- C. voice
- D. SMS

Answer: A

Explanation:

Reference:
<https://docs.microsoft.com/en-us/azure/active-directory/authentication/concept-authentication-authenticator-app>

NEW QUESTION 141

- (Exam Topic 4)
Note: This question is part of a series of questions that present the same scenario. Each question in the series contains a unique solution that might meet the stated goals. Some question sets might have more than one correct solution, while others might not have a correct solution.
After you answer a question in this section, you will NOT be able to return to it. As a result, these questions will not appear in the review screen.
You have a Microsoft 365 tenant.
You have 100 IT administrators who are organized into 10 departments. You create the access review shown in the exhibit. (Click the Exhibit tab.)

Create an access review

Access reviews allow reviewers to attest to whether users still need to be in a role.

Review name *

Description

Start date *

Frequency

Duration (in days)

End ☐ Never ☐ End by ☐ Occurrences

Number of times

End date

Users

Scope ☒ Everyone

Review role membership (permanent and eligible) *

[Application Administrator and 72 others](#)

Reviewers

Reviewers

(Preview) Fallback reviewers

Upon completion settings

Start

You discover that all access review requests are received by Megan Bowen.

You need to ensure that the manager of each department receives the access reviews of their respective department.

Solution: You modify the properties of the IT administrator user accounts. Does this meet the goal?

- A. Yes
- B. No

Answer: A

Explanation:

Reference:

D18912E1457D5D1DDCDBD40AB3BF70D5D

<https://docs.microsoft.com/en-us/azure/active-directory/governance/create-access-review>

NEW QUESTION 142

- (Exam Topic 4)

You need to support the planned changes and meet the technical requirements for MFA.

Which feature should you use, and how long before the users must complete the registration? To answer, select the appropriate options in the answer area.

NOTE: Each correct selection is worth one point.

Answer Area

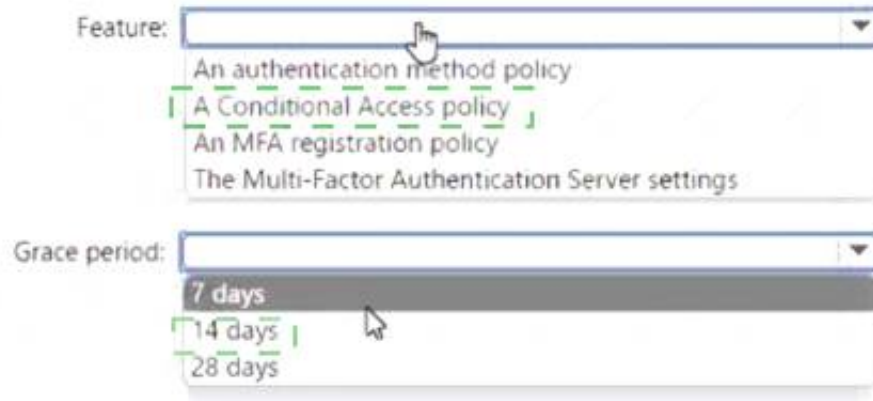
Feature:

Grace period:

- A. Mastered
- B. Not Mastered

Answer: A

Explanation:
 Answer Area



NEW QUESTION 143

- (Exam Topic 4)

You have an Azure Active Directory (Azure AD) tenant that contains the objects shown in the following table.

Name	Type	Directly assigned license
User1	User	None
User2	User	Microsoft Office 365 Enterprise E5
Group1	Security group	Microsoft Office 365 Enterprise E5
Group2	Microsoft 365 group	None
Group3	Mail-enabled security group	None

Which objects can you add as members to Group3?

- A. User2 and Group2 only
- B. User2, Group1, and Group2 only
- C. User1, User2, Group1 and Group2
- D. User1 and User2 only
- E. User2 only

Answer: E

Explanation:

Reference:

<https://bitsizedbytes.wordpress.com/2018/12/10/distribution-security-and-office-365-groups-nesting/>

NEW QUESTION 148

- (Exam Topic 4)

You have a Microsoft 365 tenant.

You currently allow email clients that use Basic authentication to conned to Microsoft Exchange Online.

You need to ensure that users can connect t to Exchange only run email clients that use Modern authentication protocols.

What should you implement?

You need to ensure that use Modern authentication

- A. a compliance policy in Microsoft Endpoint Manager
- B. a conditional access policy in Azure Active Directory (Azure AD)
- C. an application control profile in Microsoft Endpoint Manager
- D. an OAuth policy in Microsoft Cloud App Security

Answer: B

NEW QUESTION 153

- (Exam Topic 4)

You have an Azure Active Directory (Azure AD) tenant that contains three users named User1, User1, and User3,

You create a group named Group1. You add User2 and User3 to Group1.

You configure a role in Azure AD Privileged identity Management (PIM) as shown in the application administrator exhibit. (Click the application Administrator tab.)

Role setting details - Application Administrator

Privileged Identity Management | Azure AD roles

Edit

Activation

Setting	State
Activation maximum duration (hours)	5 hour(s)
Require justification on activation	Yes
Require ticket information on activation	No
Require approval to activate	Yes
Approvers	0 Member(s), 1 Group(s)

Assignment

Setting	State
Allow permanent eligible assignment	No
Expire eligible assignments after	3 month(s)
Allow permanent active assignment	No
Expire active assignments after	1 month(s)
Require Azure Multi-Factor Authentication on activation	No
Require justification on active assignment	Yes

Group1 is configured as the approver for the application administrator role.
You configure User2 to be eligible for the application administrator role.
For User1, you add an assignment to the Application administrator role as shown in the Assignment exhibit. (Click Assignment tab)

Add assignments

Privileged Identity Management | Azure AD roles

Membership Setting

Assignment type ⓘ

☒ Eligible

☐ Active

Maximum allowed eligible duration is 3 month(s).

Assignment starts *

01/01/2021 12:00:00 AM

Assignment ends *

01/31/2021 11:59:00 PM

For each of the following statement, select Yes if the statement is true, Otherwise, select No. NOTE: Each correct selection is worth one point.

Answer Area

Statements	Yes	No
User1 is assigned the Application administrator role automatically.	<input type="radio"/>	<input type="radio"/>
When User2 requests to be assigned the Application administrator role, only User3 can approve the request.	<input type="radio"/>	<input type="radio"/>
If a request by User1 to be assigned the Application administrator role is approved on January 31, 2021, at 23:00, User1 can use the role until February 1, 2021, at 04:00.	<input type="radio"/>	<input type="radio"/>

- A. Mastered
- B. Not Mastered

Answer: A

Explanation:

Answer Area

Statements	Yes	No
User1 is assigned the Application administrator role automatically.	<input checked="" type="radio"/>	<input type="radio"/>
When User2 requests to be assigned the Application administrator role, only User3 can approve the request.	<input checked="" type="radio"/>	<input type="radio"/>
If a request by User1 to be assigned the Application administrator role is approved on January 31, 2021, at 23:00, User1 can use the role until February 1, 2021, at 04:00.	<input type="radio"/>	<input checked="" type="radio"/>

- (Exam Topic 4)
 Note: This question is part of a series of questions that present the same scenario. Each question in the series contains a unique solution that might meet the stated goals. Some question sets might have more than one correct solution, while others might not have a correct solution.
 After you answer a question in this section, you will NOT be able to return to it. As a result, these questions will not appear in the review screen.
 You have a Microsoft 365 tenant.
 You have 100 IT administrators who are organized into 10 departments. You create the access review shown in the exhibit. (Click the Exhibit tab.)

Create an access review

Access reviews allow reviewers to attest to whether users still need to be in a role.

Review name *

Description

Start date *

Frequency

Duration (in days)

End End by

Number of times

End date

Users

Scope ☒ Everyone

Review role membership (permanent and eligible) *

[Application Administrator and 72 others](#)

Reviewers

Reviewers

(Preview) Fallback reviewers

Upon completion settings

Start

You discover that all access review requests are received by Megan Bowen.
 You need to ensure that the manager of each department receives the access reviews of their respective department.
 Solution: You add each manager as a fallback reviewer. Does this meet the goal?

- A. Yes
- B. No

Answer: B

Explanation:
 Reference:
<https://docs.microsoft.com/en-us/azure/active-directory/governance/create-access-review>

NEW QUESTION 160

- (Exam Topic 4)
 You have an Azure Active Directory (Azure AD) tenant that contains a user named User1 and the groups shown in the following table.

Name	Type	Membership type
Group1	Security	Assigned
Group2	Security	Dynamic User
Group3	Security	Dynamic Device
Group4	Microsoft 365	Assigned

In the tenant, you create the groups shown in the following table.

Name	Type	Membership type
GroupA	Security	Assigned
GroupB	Microsoft 365	Assigned

Which members can you add to GroupA and GroupB? To answer, select the appropriate options in the answer area.
 NOTE: Each correct selection is worth one point.

GroupA:

User1 only
User1 and Group1 only
User1, Group1, and Group2 only
User1, Group1, and Group4 only
User1, Group1, Group2, and Group3 only
User1, Group1, Group2, Group3, and Group4

GroupB:

User1 only
User1 and Group4 only
User1, Group1, and Group4 only
User1, Group1, Group2, and Group4 only
User1, Group1, Group2, Group3, and Group4

- A. Mastered
- B. Not Mastered

Answer: A

Explanation:

Reference:
<https://bitsizedbytes.wordpress.com/2018/12/10/distribution-security-and-office-365-groups-nesting/>

NEW QUESTION 162

.....

Thank You for Trying Our Product

We offer two products:

1st - We have Practice Tests Software with Actual Exam Questions

2nd - Questons and Answers in PDF Format

SC-300 Practice Exam Features:

- * SC-300 Questions and Answers Updated Frequently
- * SC-300 Practice Questions Verified by Expert Senior Certified Staff
- * SC-300 Most Realistic Questions that Guarantee you a Pass on Your FirstTry
- * SC-300 Practice Test Questions in Multiple Choice Formats and Updatesfor 1 Year

100% Actual & Verified — Instant Download, Please Click
[Order The SC-300 Practice Test Here](#)