

# Cisco

## Exam Questions 300-420

Designing Cisco Enterprise Networks (ENSLD)



#### NEW QUESTION 1

Which control-plane technology allows the same subnet to exist across multiple network locations?

- A. LISP
- B. VXLAN
- C. FabricPath
- D. ISE mobility services

**Answer: B**

#### NEW QUESTION 2

What are two valid scaling techniques when an EIGRP network is designed that consists of more than 1000 routers? (Choose two.)

- A. Use structured hierarchical topology with route summarization
- B. Used sub-second timers
- C. Use the distribute-list command to filter routes
- D. Modify delay parameters on the links
- E. Implement multiple EIGRP autonomous systems

**Answer: AE**

#### NEW QUESTION 3

An engineer is working with NETCONF and Cisco NX-OS based devices. The engineer needs a YANG model that supports a specific feature relevant only to Cisco NX-OS. Which model must the engineer choose?

- A. Native
- B. IEEE
- C. OpenConfig
- D. IETF

**Answer: D**

#### NEW QUESTION 4

Which OSPF area blocks LSA Type 3, 4 and 5, but allows a default summary route?

- A. normal
- B. stub
- C. NSSA
- D. totally stubby

**Answer: D**

#### NEW QUESTION 5

What is one function of the vSmart controller in an SD-WAN deployment?

- A. orchestrates vEdge and cEdge connectivity
- B. responsible for the centralized control plane of the SD-WAN network
- C. provides centralized network management and a GUI to monitor and operate the SD-WAN overlay
- D. provides a data-plane at branch offices to pass traffic through the SD-WAN network

**Answer: B**

#### NEW QUESTION 6

An engineer must design a multicast network for a financial application. Most of the multicast sources also receive multicast traffic (many-to-many deployment model). To better scale routing tables, the design must not use source trees. Which multicast protocol satisfies these requirements?

- A. PIM-SSM
- B. PIM-SM
- C. MSDP
- D. BIDIR-PIM

**Answer: B**

#### NEW QUESTION 7

A network engineer must connect two sites across a public network using a secure tunneling technology that supports multicast traffic. Which technology must be chosen?

- A. IPsec
- B. GRE
- C. PPTP
- D. GRE over IPsec

**Answer: D**

#### NEW QUESTION 8

Which method will filter routes between EIGRP neighbors within the same autonomous system?

- A. distribute-list
- B. policy-based routing
- C. leak-map
- D. route tagging

**Answer:** A

#### NEW QUESTION 9

Which function are fabric intermediate nodes responsible for in an SD-Access Architecture?

- A. mapping EIDs to RLOCs
- B. encapsulating user traffic in a VXLAN header including the SGT
- C. registering new endpoints in the HTDB
- D. transporting IP packets between edge nodes and border nodes

**Answer:** D

#### NEW QUESTION 10

A company with multiple service providers wants to speed up BGP convergence time in the event a failure occurs with their primary link. Which approach achieves this goal and does not impact router CPU utilization?

- A. Utilize BFD and tune the multiplier to 50
- B. Lower the BGP hello interval
- C. Decrease the BGP keepalive timer
- D. Utilize BFD and keep the default BGP timers

**Answer:** C

#### NEW QUESTION 10

When IPsec VPNs are designed, what is a unique requirement if support for IP Multicast is required?

- A. encapsulation of traffic with GRE or VTI
- B. IPsec forwarding using transport mode
- C. additional bandwidth for headend
- D. IPsec forwarding using tunnel mode

**Answer:** A

#### NEW QUESTION 11

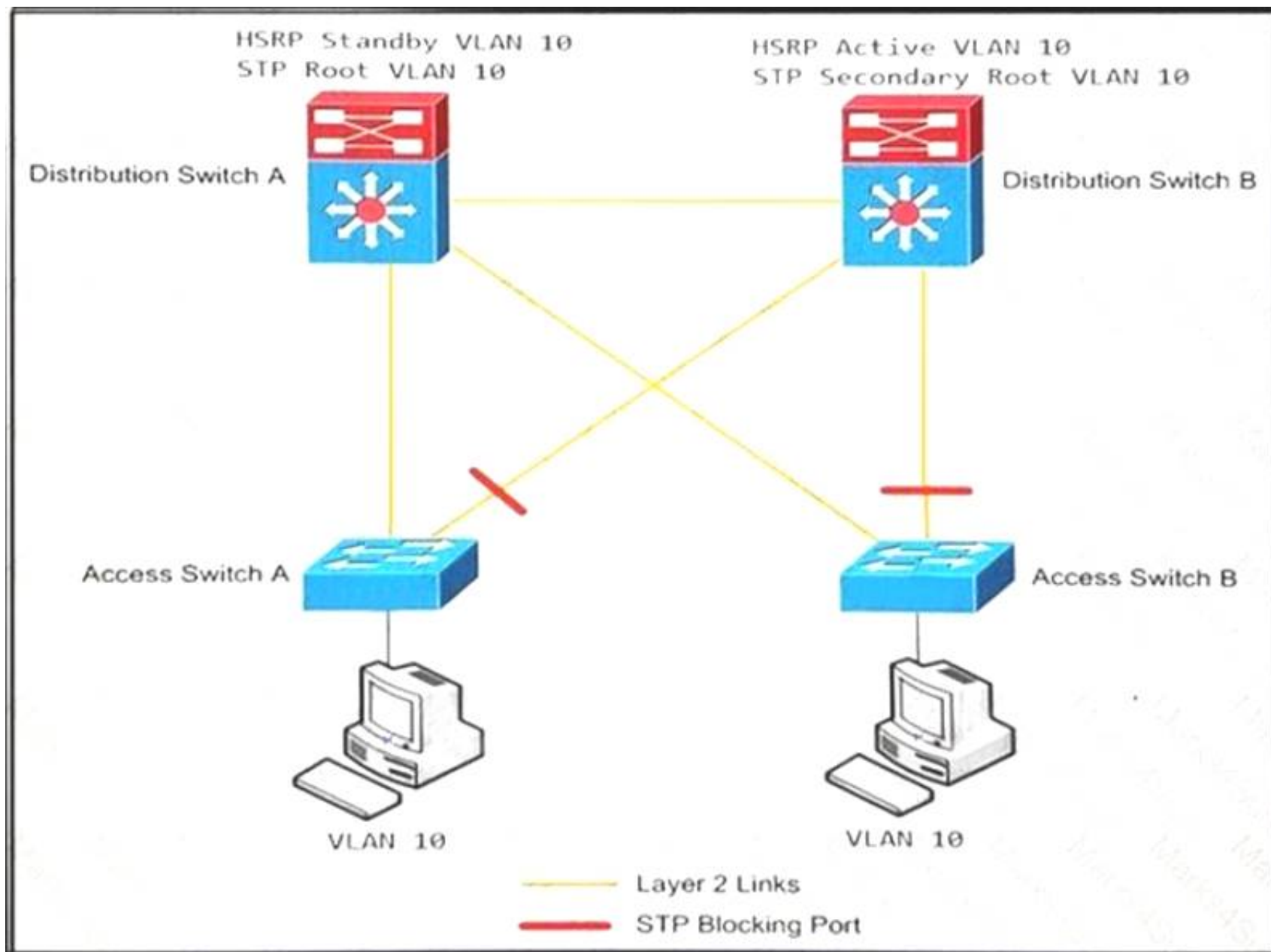
Company A recently acquired another company. Users of the newly acquired company must be able to access a server that exists on Company A's network, both companies use overlapping IP address ranges. Which action conserves IP address space and provides access to the server?

- A. Use a single IP address to create overload NAT
- B. Use a single IP address to create a static NAT entry
- C. Build one-to-one NAT translation for every user that needs access
- D. Re-IP overlapping address space in the acquired company

**Answer:** A

#### NEW QUESTION 12

Refer to the exhibit.



An engineer must optimize the traffic flow of the network. Which change provides a more efficient design between the access and the distribution layer?

- A. Add a link between access switch A and access switch B
- B. Reconfigure the distribution switch A to become the HSRP Active
- C. Change the link between distribution switch A and distribution switch B to be a routed link
- D. Create an EtherChannel link between distribution switch A and distribution switch B

**Answer: B**

#### NEW QUESTION 14

An engineer is working with NETCONF and Cisco NX-OS based devices. The engineer needs a YANG model that supports a specific feature relevant only to Cisco NX-OS. Which model must the engineer choose?

- A. Native
- B. IEEE
- C. OpenConfig
- D. IETF

**Answer: D**

#### NEW QUESTION 19

Which consideration must be taken into account when using the DHCP relay feature in a Cisco SD-Access Architecture?

- A. DHCP-relay must be enabled on fabric edge nodes to provide the correct mapping of DHCP scope to the local anycast gateway.
- B. A DHCP server must be enabled on the border nodes to allow subnets to span multiple fabric edges.
- C. DHCP servers must support Cisco SD-Access extensions to correctly assign IPs to endpoints in an SDAccess fabric with anycast gateway.
- D. DHCP Option-82 must be enabled to map the circuit IP option to the access fabric node where the DHCP discover originated.

**Answer: A**

#### NEW QUESTION 20

An engineer is looking for a standards-driven YANG model to manage a multivendor network environment. Which model must the engineer choose?

- A. Native
- B. OpenConfig
- C. IETF
- D. IEEE NETCONF

**Answer: C**

#### NEW QUESTION 21

An organization is designing a detailed QoS plan that limits bandwidth to specific rates. Which two parameters are supported by the traffic policing feature?

(Choose two.)

- A. violating
- B. marking
- C. shaping
- D. bursting
- E. conforming

**Answer:** BC

**NEW QUESTION 26**

Which NETCONF operation creates filtering that is specific to the session notifications?

- A. <create-subscription>
- B. <commit>
- C. <notification>
- D. <logging>

**Answer:** A

**NEW QUESTION 31**

A company is using OSPF between its HQ location and a branch office. HQ is assigned area 0 and the branch office is assigned area 1. The company purchases a second branch office, but due to circuit delays to HQ, it decides to connect the new branch office to the existing branch office as a temporary measure. The new branch office is assigned area 2. Which OSPF configuration enables all three locations to exchange routes?

- A. The existing branch office must be configured as a stub area
- B. A virtual link must be configured between the new branch office and HQ
- C. A sham link must be configured between the new branch office and HQ
- D. The new branch office must be configured as a stub area

**Answer:** B

**NEW QUESTION 35**

.....

## Thank You for Trying Our Product

### We offer two products:

1st - We have Practice Tests Software with Actual Exam Questions

2nd - Questions and Answers in PDF Format

### 300-420 Practice Exam Features:

- \* 300-420 Questions and Answers Updated Frequently
- \* 300-420 Practice Questions Verified by Expert Senior Certified Staff
- \* 300-420 Most Realistic Questions that Guarantee you a Pass on Your First Try
- \* 300-420 Practice Test Questions in Multiple Choice Formats and Updates for 1 Year

**100% Actual & Verified — Instant Download, Please Click**  
**[Order The 300-420 Practice Test Here](#)**