



Cisco

Exam Questions 350-201

Performing CyberOps Using Core Security Technologies (CBRCOR)

About ExamBible

[Your Partner of IT Exam](#)

Found in 1998

ExamBible is a company specialized on providing high quality IT exam practice study materials, especially Cisco CCNA, CCDA, CCNP, CCIE, Checkpoint CCSE, CompTIA A+, Network+ certification practice exams and so on. We guarantee that the candidates will not only pass any IT exam at the first attempt but also get profound understanding about the certificates they have got. There are so many alike companies in this industry, however, ExamBible has its unique advantages that other companies could not achieve.

Our Advances

* 99.9% Uptime

All examinations will be up to date.

* 24/7 Quality Support

We will provide service round the clock.

* 100% Pass Rate

Our guarantee that you will pass the exam.

* Unique Gurantee

If you do not pass the exam at the first time, we will not only arrange FULL REFUND for you, but also provide you another exam of your claim, ABSOLUTELY FREE!

NEW QUESTION 1

The physical security department received a report that an unauthorized person followed an authorized individual to enter a secured premise. The incident was documented and given to a security specialist to analyze. Which step should be taken at this stage?

- A. Determine the assets to which the attacker has access
- B. Identify assets the attacker handled or acquired
- C. Change access controls to high risk assets in the enterprise
- D. Identify movement of the attacker in the enterprise

Answer: D

NEW QUESTION 2

A patient views information that is not theirs when they sign in to the hospital's online portal. The patient calls the support center at the hospital but continues to be put on hold because other patients are experiencing the same issue. An incident has been declared, and an engineer is now on the incident bridge as the CyberOps Tier 3 Analyst. There is a concern about the disclosure of PII occurring in real-time. What is the first step the analyst should take to address this incident?

- A. Evaluate visibility tools to determine if external access resulted in tampering
- B. Contact the third-party handling provider to respond to the incident as critical
- C. Turn off all access to the patient portal to secure patient records
- D. Review system and application logs to identify errors in the portal code

Answer: C

NEW QUESTION 3

A malware outbreak is detected by the SIEM and is confirmed as a true positive. The incident response team follows the playbook to mitigate the threat. What is the first action for the incident response team?

- A. Assess the network for unexpected behavior
- B. Isolate critical hosts from the network
- C. Patch detected vulnerabilities from critical hosts
- D. Perform analysis based on the established risk factors

Answer: B

NEW QUESTION 4

A SOC analyst is investigating a recent email delivered to a high-value user for a customer whose network their organization monitors. The email includes a suspicious attachment titled "Invoice RE: 0004489". The hash of the file is gathered from the Cisco Email Security Appliance. After searching Open Source Intelligence, no available history of this hash is found anywhere on the web. What is the next step in analyzing this attachment to allow the analyst to gather indicators of compromise?

- A. Run and analyze the DLP Incident Summary Report from the Email Security Appliance
- B. Ask the company to execute the payload for real time analysis
- C. Investigate further in open source repositories using YARA to find matches
- D. Obtain a copy of the file for detonation in a sandbox

Answer: D

NEW QUESTION 5

What do 2xx HTTP response codes indicate for REST APIs?

- A. additional action must be taken by the client to complete the request
- B. the server takes responsibility for error status codes
- C. communication of transfer protocol-level information
- D. successful acceptance of the client's request

Answer: D

NEW QUESTION 6

What is a limitation of cyber security risk insurance?

- A. It does not cover the costs to restore stolen identities as a result of a cyber attack
- B. It does not cover the costs to hire forensics experts to analyze the cyber attack
- C. It does not cover the costs of damage done by third parties as a result of a cyber attack
- D. It does not cover the costs to hire a public relations company to help deal with a cyber attack

Answer: A

NEW QUESTION 7

An engineer has created a bash script to automate a complicated process. During script execution, this error occurs: permission denied. Which command must be added to execute this script?

- A. `chmod +x ex.sh`
- B. `source ex.sh`
- C. `chroot ex.sh`

D. sh ex.sh

Answer: A

NEW QUESTION 8

An engineer is utilizing interactive behavior analysis to test malware in a sandbox environment to see how the malware performs when it is successfully executed. A location is secured to perform reverse engineering on a piece of malware. What is the next step the engineer should take to analyze this malware?

- A. Run the program through a debugger to see the sequential actions
- B. Unpack the file in a sandbox to see how it reacts
- C. Research the malware online to see if there are noted findings
- D. Disassemble the malware to understand how it was constructed

Answer: C

NEW QUESTION 9

A SIEM tool fires an alert about a VPN connection attempt from an unusual location. The incident response team validates that an attacker has installed a remote access tool on a user’s laptop while traveling. The attacker has the user’s credentials and is attempting to connect to the network. What is the next step in handling the incident?

- A. Block the source IP from the firewall
- B. Perform an antivirus scan on the laptop
- C. Identify systems or services at risk
- D. Identify lateral movement

Answer: C

NEW QUESTION 10

An engineer notices that unauthorized software was installed on the network and discovers that it was installed by a dormant user account. The engineer suspects an escalation of privilege attack and responds to the incident. Drag and drop the activities from the left into the order for the response on the right.

Answer Area

Identify systems to be taken offline	Step 1
Conduct content scans	Step 2
Collect log data	Step 3
Request system patch	Step 4
Reimage	Step 5

- A. Mastered
- B. Not Mastered

Answer: A

Explanation:

Answer Area

Identify systems to be taken offline	Conduct content scans
Conduct content scans	Collect log data
Collect log data	Identify systems to be taken offline
Request system patch	Reimage
Reimage	Request system patch

NEW QUESTION 10

A SOC analyst is notified by the network monitoring tool that there are unusual types of internal traffic on IP subnet 103.861.2117.0/24. The analyst discovers

unexplained encrypted data files on a computer system that belongs on that specific subnet. What is the cause of the issue?

- A. DDoS attack
- B. phishing attack
- C. virus outbreak
- D. malware outbreak

Answer: D

NEW QUESTION 11

An engineer is developing an application that requires frequent updates to close feedback loops and enable teams to quickly apply patches. The team wants their code updates to get to market as often as possible. Which software development approach should be used to accomplish these goals?

- A. continuous delivery
- B. continuous integration
- C. continuous deployment
- D. continuous monitoring

Answer: A

NEW QUESTION 14

An employee abused PowerShell commands and script interpreters, which lead to an indicator of compromise (IOC) trigger. The IOC event shows that a known malicious file has been executed, and there is an increased likelihood of a breach. Which indicator generated this IOC event?

- A. ExecutedMalware.ioc
- B. Crossrider.ioc
- C. ConnectToSuspiciousDomain.ioc
- D. W32 AccesschkUtility.ioc

Answer: D

NEW QUESTION 18

Refer to the exhibit.

Max (K)	Retain	OverflowAction	Entries	Log
-----	-----	-----	-----	---
15,168	0	OverwriteAsNeeded	20,792	Application
15,168	0	OverwriteAsNeeded	12,559	System
15,360	0	OverwriteAsNeeded	11,173	Windows PowerShell

An employee is a victim of a social engineering phone call and installs remote access software to allow an “MS Support” technician to check his machine for malware. The employee becomes suspicious after the remote technician requests payment in the form of gift cards. The employee has copies of multiple, unencrypted database files, over 400 MB each, on his system and is worried that the scammer copied the files off but has no proof of it. The remote technician was connected sometime between 2:00 pm and 3:00 pm over https. What should be determined regarding data loss between the employee’s laptop and the remote technician’s system?

- A. No database files were disclosed
- B. The database files were disclosed
- C. The database files integrity was violated
- D. The database files were intentionally corrupted, and encryption is possible

Answer: C

NEW QUESTION 22

A customer is using a central device to manage network devices over SNMPv2. A remote attacker caused a denial of service condition and can trigger this vulnerability by issuing a GET request for the ciscoFlashMIB OID on an affected device. Which should be disabled to resolve the issue?

- A. SNMPv2
- B. TCP small services
- C. port UDP 161 and 162
- D. UDP small services

Answer: A

NEW QUESTION 27

Refer to the exhibit.


```
alert tcp $EXTERNAL_NET any -> $HOME_NET 143 ( msg:"PROTOCOL-
IMAP login brute force attempt";
flow:to_server,established,no_stream;
content:"LOGIN",fast_pattern,nocase; detection_filter:track
by_dst, count 5, seconds 900; metadata:ruleset community;
service:imap; reference:url,attack.mitre.org/techniques/T1110;
classtype:suspicious-login; sid:2273; rev:12; )
```

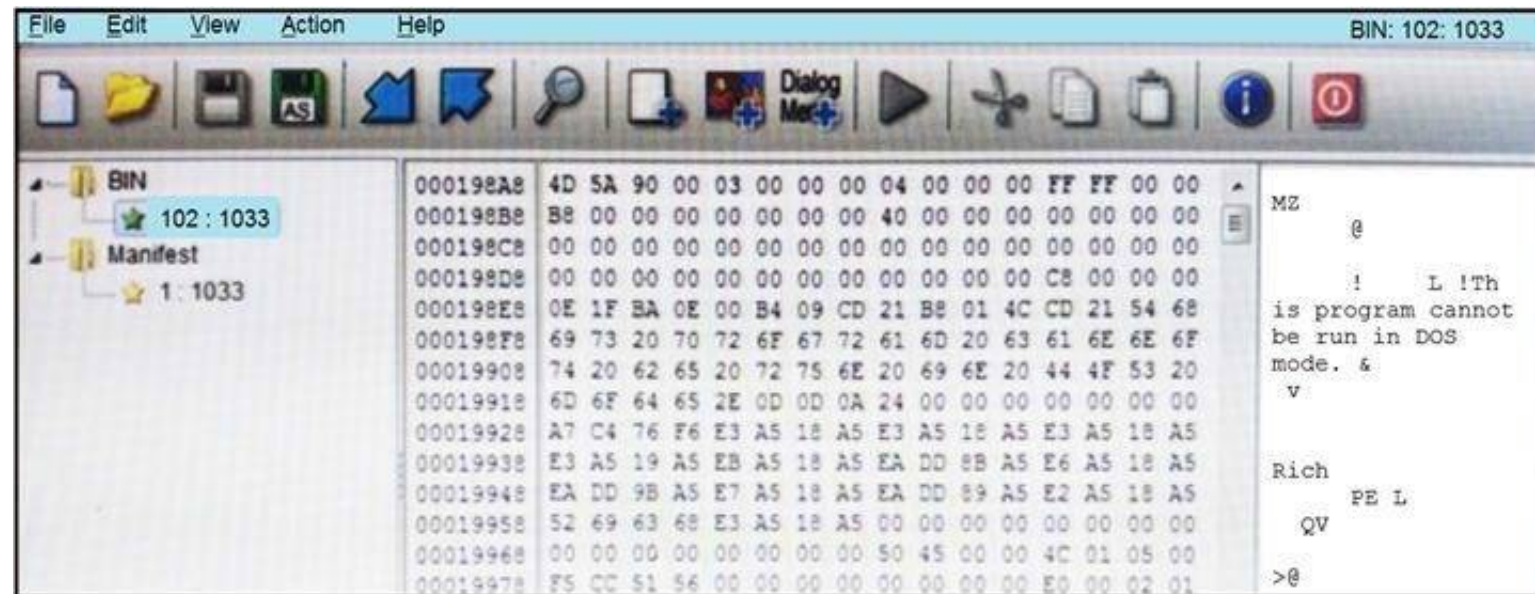
IDS is producing an increased amount of false positive events about brute force attempts on the organization's mail server. How should the Snort rule be modified to improve performance?

- A. Block list of internal IPs from the rule
- B. Change the rule content match to case sensitive
- C. Set the rule to track the source IP
- D. Tune the count and seconds threshold of the rule

Answer: B

NEW QUESTION 30

Refer to the exhibit.



An engineer is reverse engineering a suspicious file by examining its resources. What does this file indicate?

- A. a DOS MZ executable format
- B. a MS-DOS executable archive
- C. an archived malware
- D. a Windows executable file

Answer: D

NEW QUESTION 32

What is a benefit of key risk indicators?

- A. clear perspective into the risk position of an organization
- B. improved visibility on quantifiable information
- C. improved mitigation techniques for unknown threats
- D. clear procedures and processes for organizational risk

Answer: C

NEW QUESTION 35

An engineer is analyzing a possible compromise that happened a week ago when the company ? (Choose two.)

- A. firewall
- B. Wireshark
- C. autopsy
- D. SHA512
- E. IPS

Answer: AB

NEW QUESTION 37

Drag and drop the components from the left onto the phases of the CI/CD pipeline on the right.

Answer Area

build	Phase 1
release	Phase 2
deploy	Phase 3
operate	Phase 4
monitor	Phase 5
test	Phase 6
plan	Phase 7
develop	Phase 8

- A. Mastered
- B. Not Mastered

Answer: A

Explanation:

Answer Area

build	plan
release	develop
deploy	build
operate	test
monitor	release
test	deploy
plan	operate
develop	monitor

NEW QUESTION 40
Refer to the exhibit.

TCP	192.168.1.8:54580	vk-in-f108:imaps	ESTABLISHED
TCP	192.168.1.8:54583	132.245.61.50:https	ESTABLISHED
TCP	192.168.1.8:54916	bay405-m:https	ESTABLISHED
TCP	192.168.1.8:54978	vu-in-f188:5228	ESTABLISHED
TCP	192.168.1.8:55094	72.21.194.109:https	ESTABLISHED
TCP	192.168.1.8:55401	wonderhowto:http	ESTABLISHED
TCP	192.168.1.8:55730	mia07s34-in-f78:https	TIME_WAIT
TCP	192.168.1.8:55824	a23-40-191-15:https	CLOSE_WAIT
TCP	192.168.1.8:55825	a23-40-191-15:https	CLOSE_WAIT
TCP	192.168.1.8:55846	mia07s25-in-f14:https	TIME_WAIT
TCP	192.168.1.8:55847	a184-51-150-89:http	CLOSE_WAIT
TCP	192.168.1.8:55853	157.55.56.154:40028	ESTABLISHED
TCP	192.168.1.8:55879	atl14s38-in-f4:https	ESTABLISHED
TCP	192.168.1.8:55884	208-46-117-174:https	ESTABLISHED
TCP	192.168.1.8:55893	vx-in-f95:https	TIME_WAIT
TCP	192.168.1.8:55947	stackoverflow:https	ESTABLISHED
TCP	192.168.1.8:55966	stackoverflow:https	ESTABLISHED
TCP	192.168.1.8:55970	mia07s34-in-f78:https	TIME_WAIT
TCP	192.168.1.8:55972	191.238.241.80:https	TIME_WAIT
TCP	192.168.1.8:55976	54.239.26.242:https	ESTABLISHED
TCP	192.168.1.8:55979	mia07s35-in-f14:https	ESTABLISHED
TCP	192.168.1.8:55986	server11:https	TIME_WAIT
TCP	192.168.1.8:55988	104.16.118.182:http	ESTABLISHED

A security analyst needs to investigate a security incident involving several suspicious connections with a possible attacker. Which tool should the analyst use to identify the source IP of the offender?

- A. packet sniffer
- B. malware analysis
- C. SIEM
- D. firewall manager

Answer: A

NEW QUESTION 42

What is a principle of Infrastructure as Code?

- A. System maintenance is delegated to software systems
- B. Comprehensive initial designs support robust systems
- C. Scripts and manual configurations work together to ensure repeatable routines
- D. System downtime is grouped and scheduled across the infrastructure

Answer: B

NEW QUESTION 45

A threat actor attacked an organization's Active Directory server from a remote location, and in a thirty-minute timeframe, stole the password for the administrator account and attempted to access 3 company servers. The threat actor successfully accessed the first server that contained sales data, but no files were downloaded. A second server was also accessed that contained marketing information and 11 files were downloaded. When the threat actor accessed the third server that contained corporate financial data, the session was disconnected, and the administrator's account was disabled. Which activity triggered the behavior analytics tool?

- A. accessing the Active Directory server
- B. accessing the server with financial data
- C. accessing multiple servers
- D. downloading more than 10 files

Answer: C

NEW QUESTION 49

An engineer wants to review the packet overviews of SNORT alerts. When printing the SNORT alerts, all the packet headers are included, and the file is too large to utilize. Which action is needed to correct this problem?

- A. Modify the alert rule to "output alert_syslog: output log"
- B. Modify the output module rule to "output alert_quick: output filename"
- C. Modify the alert rule to "output alert_syslog: output header"
- D. Modify the output module rule to "output alert_fast: output filename"

Answer: A

NEW QUESTION 51

Refer to the exhibit.

Asset	Threat	Vulnerability	Likelihood (1-10)	Impact (1-10)
Servers	Natural Disasters – Flooding	Server Room is on the zero floor	3	10
Secretary Workstation	Usage of illegitimate software	Inadequate control of software	7	6
Payment Process	Eavesdropping, Misrouting/re-routing of messages	Unencrypted communications	5	10
Website	Website Intrusion	No IDS/IPS usage	6	8

Which asset has the highest risk value?

- A. servers
- B. website
- C. payment process
- D. secretary workstation

Answer: C

NEW QUESTION 52

.....

Relate Links

100% Pass Your 350-201 Exam with ExamBible Prep Materials

<https://www.exambible.com/350-201-exam/>

Contact us

We are proud of our high-quality customer service, which serves you around the clock 24/7.

Viste - <https://www.exambible.com/>