



**Cisco**

**Exam Questions 350-601**

Implementing and Operating Cisco Data Center Core Technologies

## About ExamBible

*[Your Partner of IT Exam](#)*

## Found in 1998

ExamBible is a company specialized on providing high quality IT exam practice study materials, especially Cisco CCNA, CCDA, CCNP, CCIE, Checkpoint CCSE, CompTIA A+, Network+ certification practice exams and so on. We guarantee that the candidates will not only pass any IT exam at the first attempt but also get profound understanding about the certificates they have got. There are so many alike companies in this industry, however, ExamBible has its unique advantages that other companies could not achieve.

## Our Advances

### \* 99.9% Uptime

All examinations will be up to date.

### \* 24/7 Quality Support

We will provide service round the clock.

### \* 100% Pass Rate

Our guarantee that you will pass the exam.

### \* Unique Gurantee

If you do not pass the exam at the first time, we will not only arrange FULL REFUND for you, but also provide you another exam of your claim, ABSOLUTELY FREE!

### NEW QUESTION 1

Which product includes prebuilt templates that can be used to customize fabric deployments?

- A. Cisco ACI
- B. Cisco UCS Manger
- C. Cisco data Center Network Manger
- D. Cisco Tetration

**Answer: C**

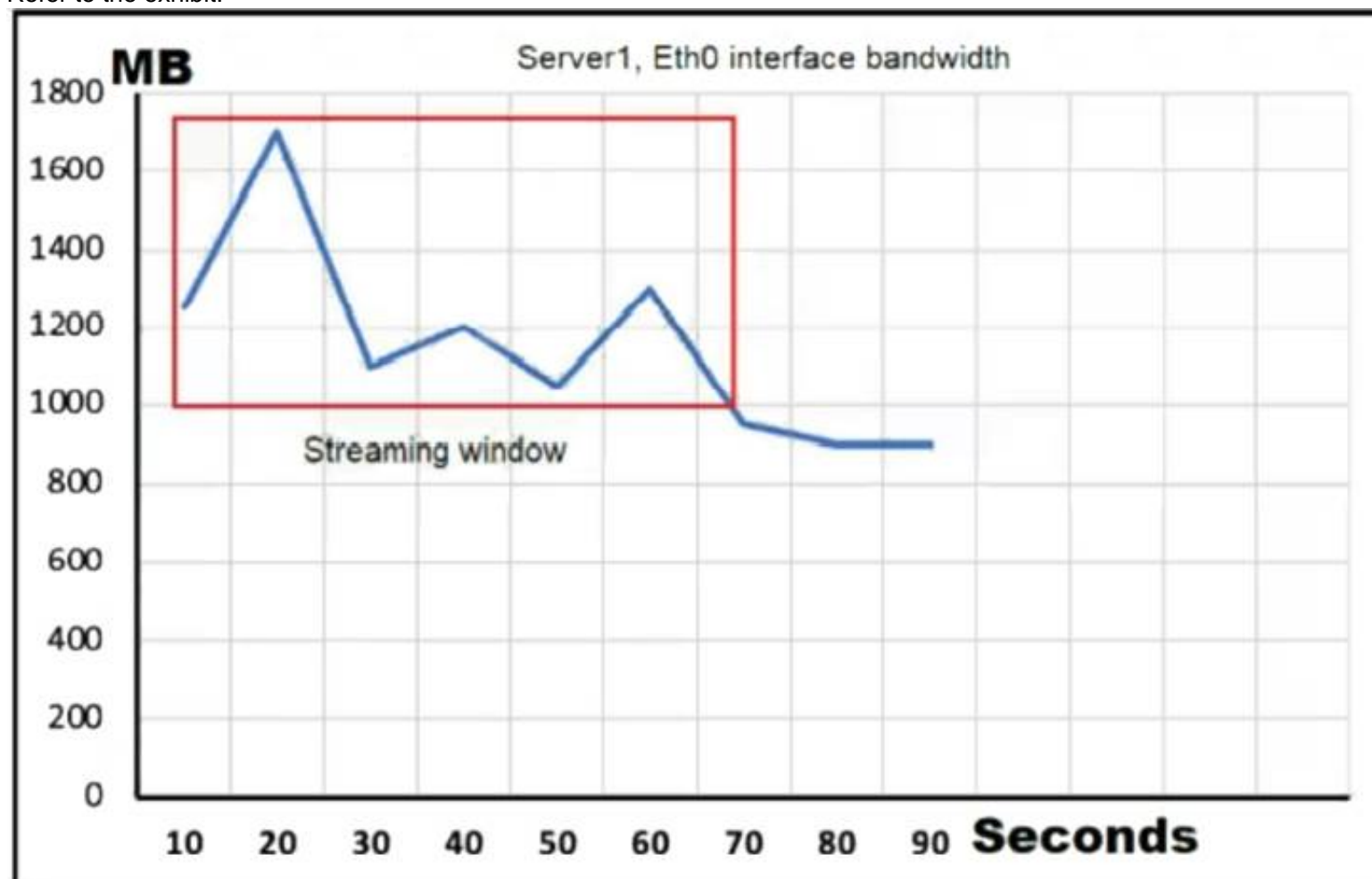
#### Explanation:

<https://www.cisco.com/c/en/us/products/collateral/cloud-systems-management/prime-data-center-networkmanag>

[https://www.cisco.com/c/en/us/td/docs/switches/datacenter/sw/11\\_2\\_1/config\\_guide/lanfabric/b\\_dcnm\\_fabric\\_lan/template\\_usage.html](https://www.cisco.com/c/en/us/td/docs/switches/datacenter/sw/11_2_1/config_guide/lanfabric/b_dcnm_fabric_lan/template_usage.html)

### NEW QUESTION 2

Refer to the exhibit.



Server1 is connected to a Cisco Nexus 9000 Series Switch via a 1-Gb port channel. The storm control is applied to the Eth0 device with a zero percent value. What does the switch do to traffic that traverses the switch interfaces during the streaming window that exceeds the bandwidth of the interfaces?

- A. forwards all traffic
- B. forwards half of the traffic
- C. suppresses all traffic
- D. drops all of the excess traffic

**Answer: B**

### NEW QUESTION 3

A server engineer wants to control power uses on a Cisco UCS C-series rack server down to the component level. Which two components support specific power limits? (Choose two.)

- A. memory
- B. graphic card
- C. processor
- D. network controller
- E. storage controller

**Answer: AC**

### NEW QUESTION 4

An engineer is enabling port security on a Cisco MDS 9000 Series Switch. Which feature of enabling port security on a Cisco MDS 9000 Series Switch must be considered?

- A. It always learns about switches that are logging in.
- B. It can be distributed by using Cisco Fabric services.
- C. It authorizes only the configured sWWN to participate in the fabric.
- D. It binds the fabric at the switch level.

**Answer: B**

**Explanation:**

## Port Security Configuration Distribution

The port security feature uses the Cisco Fabric Services (CFS) infrastructure to enable efficient database management, provide a single point of configuration for the entire fabric in the VSAN, and enforce the port security policies throughout the fabric.

[https://www.cisco.com/c/en/us/td/docs/switches/datacenter/mds9000/sw/6\\_2/configuration/guides/security/nx-o](https://www.cisco.com/c/en/us/td/docs/switches/datacenter/mds9000/sw/6_2/configuration/guides/security/nx-o)

### NEW QUESTION 5

Which two configuration settings are available in the Cisco UCS Firmware Auto Sync Server policy? (Choose two.)

- A. Immediate Action
- B. User Acknowledge
- C. No Action
- D. Delayed Action
- E. User Notification

**Answer:** BC

### NEW QUESTION 6

A storage administrator notices an increasing number of storage targets that unexpectedly reach capacity, causing periodic service interruptions. The administrator must now create and submit a daily report of the environment that shows the status of the storage targets with the highest capacities. Which solution provides this information?

- A. Nagios Core with OpManager
- B. Cisco DCNM with SAN Insight
- C. SolarWinds with Slow Drain Analysis
- D. Cisco Intersight with Slow Drain Analysis

**Answer:** D

### NEW QUESTION 7

What is required for using puppet in a Cisco NX-OS environment?

- A. Open Agent Container
- B. XML management interface
- C. NX-API
- D. OpenNP

**Answer:** A

### NEW QUESTION 8

What happens to the default host firmware policy after a Cisco UCS Manager upgrade?

- A. It is updated to contain the firmware entries of all the components.
- B. It is replaced by a new default policy without any firmware entries.
- C. It is assigned to all the service profiles that include a host firmware policy.
- D. It is set to match the host firmware policy.

**Answer:** B

**Explanation:**

[https://www.cisco.com/c/en/us/td/docs/unified\\_computing/ucs/ucs-manager/GUI-User-Guides/Firmware-Mgmt/](https://www.cisco.com/c/en/us/td/docs/unified_computing/ucs/ucs-manager/GUI-User-Guides/Firmware-Mgmt/)

### NEW QUESTION 9

A network administrator attempts to automate the provisioning of several new Cisco Nexus switches. The administrator prepares a bootstrap configuration script for the task. Due to the number of switches, a zero-touch provisioning solution is preferred. Additionally, some switches arrive with outdated software and should be automatically upgraded as part of the provisioning workflow. Which solution meets the requirements?

- A. DHCP
- B. Ansible
- C. NX-API
- D. POAP

**Answer:** C

### NEW QUESTION 10

A network engineer plans to upgrade the firmware of a Cisco UCS B-Series chassis by using the Auto Install feature. Which component is upgraded during the infrastructure firmware upgrade stage?

- A. Cisco IMC
- B. Adapter
- C. I/O module
- D. BIOS

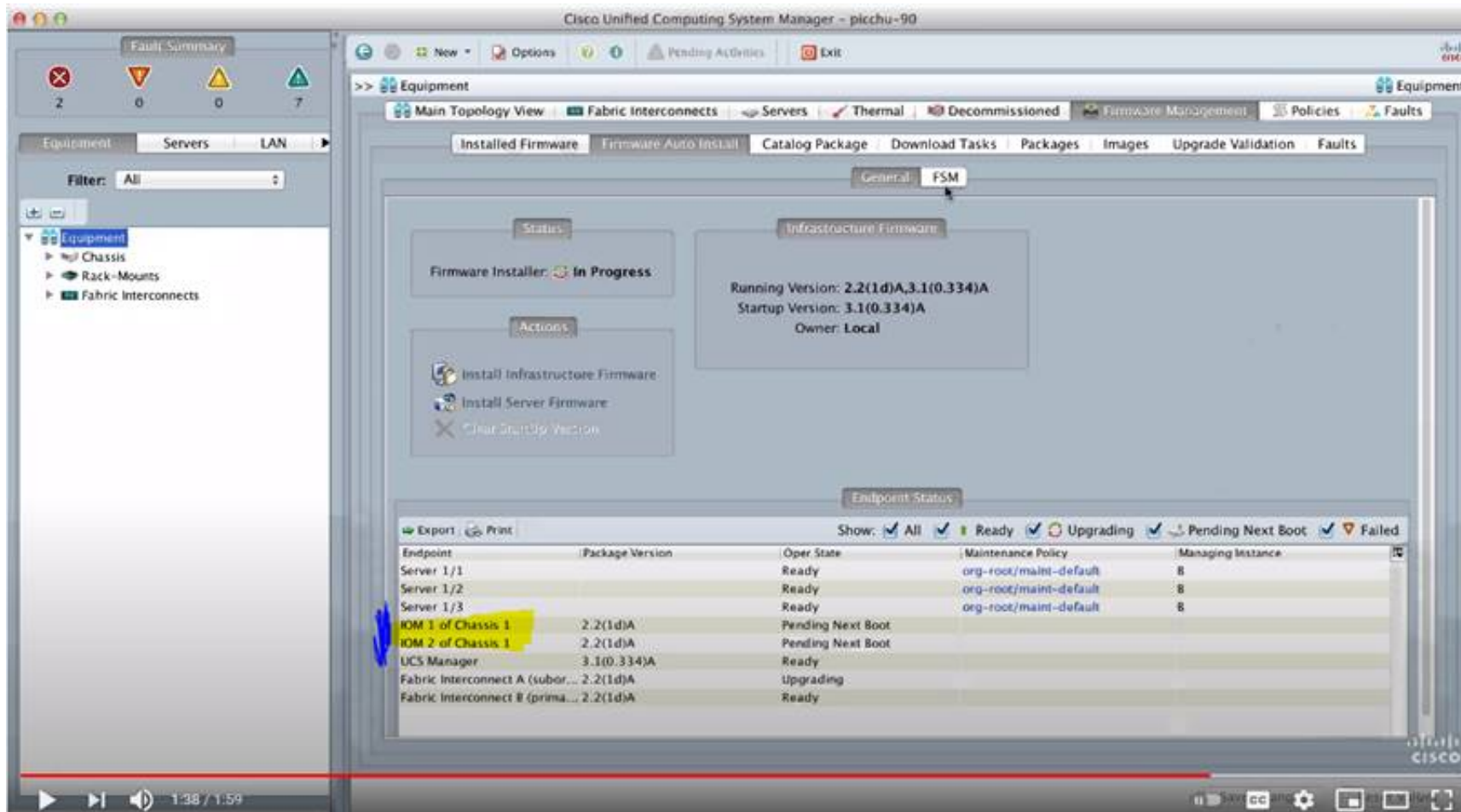
**Answer: C**

**Explanation:**

[https://www.cisco.com/c/en/us/td/docs/unified\\_computing/ucs/ucs-manager/GUI-User-Guides/Firmware-Mgmt/](https://www.cisco.com/c/en/us/td/docs/unified_computing/ucs/ucs-manager/GUI-User-Guides/Firmware-Mgmt/) <https://www.youtube.com/watch?v=g-4OgYigvRI>

## Direct Upgrade After Auto Install

During Auto Install, the startup version of the default infrastructure pack is configured. To **successfully complete a direct upgrade or activation of Cisco UCS Manager, Fabric Interconnects, and IOMs after Auto Install**, ensure that the startup version is cleared before starting direct upgrade or activation. If the startup version of the default infrastructure pack is configured, you cannot directly upgrade or activate Cisco UCS Manager, Fabric Interconnects, and IOMs. , provides detailed steps for clearing the startup version.



### NEW QUESTION 10

Which two protocols are used by the NFSv4 protocol? (Choose two.)

- A. FCP
- B. TCP
- C. UDP
- D. Ethernet
- E. IP

**Answer: BE**

### NEW QUESTION 12

Which data structure results from running this Python code?

```
>>> import json
>>> f = open('fname.json', 'r')
>>> var1 = json.load(f)
>>> var1
{'bd': 'bd1', 'ap': {'epgs': [{'name': 'app'}, {'name': 'web'}, {'name': 'db'}], 'name': 'OnlineStore'}, 'name': '39233259', 'pvn': 'pvn1'}
```

- A. tuple
- B. dictionary
- C. set
- D. list

**Answer: B**

### NEW QUESTION 16

The engineer must configure SPAN on a cisco Nexus 5000 Series switch to get a capture of the traffic from these applications for an in-depth packet analysis. Which two characteristics must be considered? (Choose two.)

- A. The Ethernet, FC, vFC, port channel, SAN port channel can be used as SPAN source ports.



- B. The rx/tx option is available for VLAN or VSAN SPAN sessions.
- C. SPAN source port can be monitored in multiple SPAN sessions.
- D. Only Ethernet, FC, vFC, port channel port types can be a destination SPAN port.
- E. A SPAN source port cannot be a destination SPAN port.

**Answer:** AE

**Explanation:**

[https://www.cisco.com/en/US/docs/switches/datacenter/nexus5000/sw/configuration/guide/cli\\_rel\\_4\\_1/Cisco\\_N](https://www.cisco.com/en/US/docs/switches/datacenter/nexus5000/sw/configuration/guide/cli_rel_4_1/Cisco_N)

#### NEW QUESTION 17

After a Cisco Nexus 7000 Series Switch chassis replacement, the administrator discovers that all vPC-enabled LACP port channels are reinitialized. The administrator wants to prevent this issue the next time the chassis is replaced. Which two actions must be taken to meet this requirement before the isolated device is reloaded? (Choose two)

- A. Set the vPC MAC address to a lower value than the peer
- B. Change the vPC system-priority of the replacement chassis to a higher value than the peer if.
- C. Change the vPC system-priority of the replacement chassis to a lower value than the peer.
- D. Set the vPC MAC address to a higher value than the peer
- E. Configure auto-recovery to the disable state on both peers

**Answer:** BE

**Explanation:**

[https://www.cisco.com/c/en/us/td/docs/switches/datacenter/nexus9000/sw/6-x/interfaces/configuration/guide/b\\_](https://www.cisco.com/c/en/us/td/docs/switches/datacenter/nexus9000/sw/6-x/interfaces/configuration/guide/b_)

-----

<https://community.cisco.com/t5/networking-documents/vpc-auto-recovery-feature-in-nexus-7000/ta-p/3123651>

#### vPC and LACP

The Link Aggregation Control Protocol (LACP) uses the system MAC address of the vPC domain to form the LACP Aggregation Group (LAG) ID for the vPC.

You can use LACP on all the vPC EtherChannels, including those channels from the downstream switch. We recommend that you configure LACP with active mode on the interfaces on each EtherChannel on the vPC peer switches. This configuration allows you to more easily detect compatibility between switches, unidirectional links, and multihop connections, and provides dynamic reaction to run-time changes and link failures.

The vPC peer link supports 16 EtherChannel LACP interfaces. You should manually configure the system priority on the vPC peer-link switches to ensure that the vPC peer-link switches have a **higher LACP priority** than the downstream connected switches. A **lower numerical value system priority means a higher LACP priority**.

#### NEW QUESTION 20

Due to a newly announced security advisory, a company has been informed that they must update the configuration of 500 network devices that are deployed in their network. The engineering team must assist the operations team to prepare for this update. The operations team does not have direct access to the network devices and must log in via a Linux server. This is the first time that the team is making a network-wide configuration and must change all devices without first installing additional software on the network devices. The operations team is unfamiliar with automation and scripting technologies. Which automation tool must be used to accomplish this goal?

- A. Chef
- B. Ansible
- C. Puppet
- D. Saltstack

**Answer:** B

#### NEW QUESTION 22

Port security is statically configured on a Cisco Nexus 7700 Series switch and F3 line card. The switch is configured with an Advanced Services license. Which two actions delete secured MAC addresses from the interface? (Choose Two)

- A. The address must be removed from the configuration.
- B. The address must reach the age limit that is configured for the interface.
- C. The interface must be converted to a routed port.
- D. The device must be restarted manually.
- E. Shutdown and then no shutdown must be run on the interface.

**Answer:** AC

**Explanation:**

[https://www.cisco.com/c/en/us/td/docs/switches/datacenter/sw/6\\_x/nx-os/security/configuration/guide/b\\_Cisco\\_](https://www.cisco.com/c/en/us/td/docs/switches/datacenter/sw/6_x/nx-os/security/configuration/guide/b_Cisco_)

## Static Method

The static learning method allows you to manually add or remove secure MAC addresses to the running configuration of an interface. If you copy the running configuration to the startup configuration, static secure MAC addresses are unaffected if the device restarts.

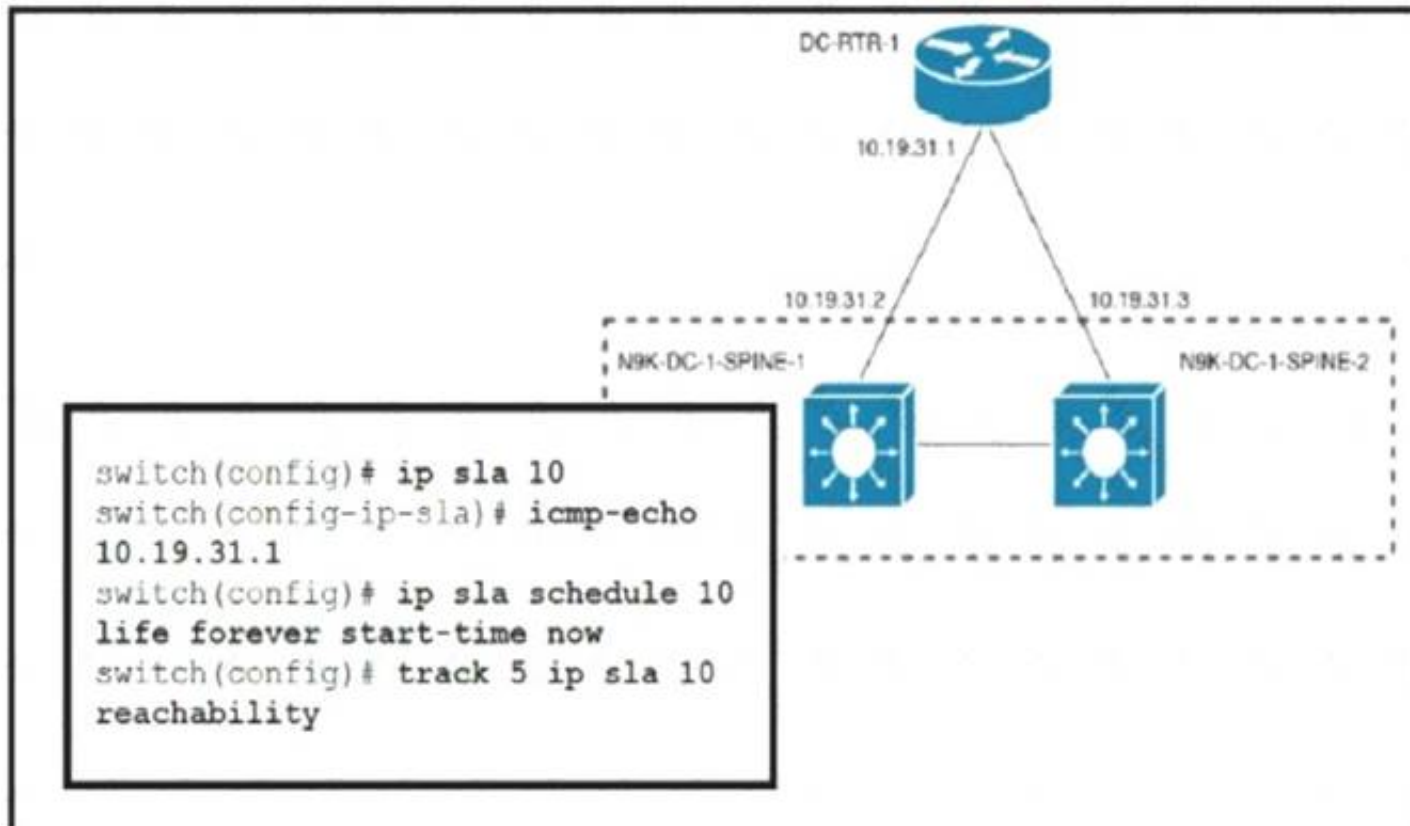
A static secure MAC address entry remains in the configuration of an interface until one of the following events occurs:

- You explicitly remove the address from the configuration.
- You configure the interface to act as a Layer 3 interface.

Adding secure addresses by the static method is not affected by whether dynamic or sticky address learning is enabled.

### NEW QUESTION 24

Refer to the exhibit.



An engineer must invoke a Python script that alerts the operations team when the router DC-RTR-1 becomes unreachable. Which configuration set accomplishes this task?

- ☐ track 3 ip sla 10 reachability  
event name GATEWAY-DOWN  
event state down  
action cli command routerdown.py
- ☒ scheduler job name ROUTER-DOWN  
job track 9 state down  
action 1.0 cli source routerdown.py  
schedule 10
- ☐ event scheduler name DOWN-ROUTER  
event track 2 state 1 not up  
event action 1.0 command source routerdown.py  
event start 0:00 repeat 0:05
- ☐ event manager applet ROUTER-DOWN-SLA  
event track 5 state down  
action 1.0 event-default  
action 2.0 cli command source routerdown.py

- A. Option A
- B. Option B
- C. Option C
- D. Option D

Answer: D

### NEW QUESTION 27

An engineer must configure a VXLAN routing on a cisco Nexus 9000 series Switch. The engineer requires a solution where all the leaf switches have the same gateway MAC and IP address. Which configuration set accomplishes this task?

- A)
 

```
NX9K(config)# fabric forwarding anycast-gateway-mac AA:BB:AA:BB:AA:BB
NX9K(config)# interface VLAN-interface-name NX9K(config-if)# fabric forwarding mode anycast-gateway
```

B)

```
NX9K(config)# fabric forwarding anycast-gateway-mac AA:BB:AA:BB:AA:BB
NX9K(config)# interface VLAN-interface-name
NX9K(config-if)# vrf member vrf-name
NX9K(config-if)# fabric forwarding mode anycast-gateway
```

C)

```
NX9K(config)# install feature-set fabric
NX9K(config)# feature-set fabric
NX9K(config)# fabric forwarding anycast-gateway-mac AA:BB:AA:BB:AA:BB
NX9K(config)# interface VLAN-interface-name
NX9K(config-if)# vrf member vrf-name
NX9K(config-if)# fabric forwarding mode anycast-gateway
```

D)

```
NX9K(config)# install feature-set fabric
NX9K(config)# feature-set fabric
NX9K(config)# fabric forwarding anycast-gateway-mac AA:BB:AA:BB:AA:BB
NX9K(config)# interface VLAN-interface-name
NX9K(config-if)# fabric forwarding mode anycast-gateway
```

- A. Option A
- B. Option B
- C. Option C
- D. Option D

**Answer: C**

#### NEW QUESTION 29

An engineer upgrades the bash on the Cisco Nexus 9000 Series Switch.

```
guestshell:~$ sudo [MISSING_COMMAND] /bootflash/bash-4.2_8642092948678a-r8x86_64.rpm.rpm
Preparing...
##### [100%]
1:bash ##### [100%]
update-alternatives: Linking //bin/sh to /bin/bash
```

Which command must be used to complete the task?

- A. rpm -qa
- B. rpm -Uhv
- C. upgrade -U
- D. update -vh

**Answer: B**

#### NEW QUESTION 32

An engineer deploys a new Cisco Nexus 5000 Series Switch in an existing environment with strict security policies. The new device should meet these requirements:

- Secure end-user ports with minimum configuration effort.
- Log security breaches and require manual recovery.
- Retain the switch configuration if the device restarts.

Which configuration must be used?

A.

```
switchport port-security
switchport port-security max 1
switchport port-security violation shutdown
```

B.

```
switchport port-security
switchport port-security violation shutdown
switchport port-security mac-address dynamic
```

C.

```
switchport port-security
switchport port-security max 1
switchport port-security mac-address sticky
```

D.



switchport port-security  
switchport port-security violation restrict  
switchport port-security mac-address sticky

Answer: C

#### NEW QUESTION 34

Refer to the exhibit.

```
1  . /etc/init.d/functions
2  exec="/usr/bin/chef-client"
3  prog="chef-client"
4  [ -e /etc/sysconfig/$prog ] && . /etc/sysconfig/$prog
5  config=${CONFIG-/etc/chef/client.rb}
6  pidfile=${PIDFILE-/var/run/chef/client.pid}
7  reload() {
8  echo -n $"Reloading $prog: "
9  [ -n "$?" ] && {
10   retval=$?
11   echo
12   return $retval
13 }
14 case "$1" in
15 reload)
16   rh_status_q || exit 7
17   ;;
18 exit 2
19 esac
20 exit $?
```

A developer must create a Bash script that performs a Chef Client reload in the event of a system reset. Which command completes the script?

- ☐ killproc -n \$pidfile \$exec -SIGHUP
- ☐ killproc -pi \$pidfile \$exec -HUP
- ☒ killproc -n \$pidfile \$exec -HUP
- ☐ killproc -p \$pidfile \$exec -HUP

- A. Option A
- B. Option B
- C. Option C
- D. Option D

Answer: D

#### NEW QUESTION 38

An engineer must configure SAN connectivity in Cisco UCS manager. The requirement is to specify the WWPN of the storage array and set the zoning type to single initiator multiple targets. The engineer must also configure interrupt handling and queues of the vHBA interface. Which two Cisco UCS policies should be used to configure the settings? (Choose two.)

- A. storage connection policy
- B. SAN connectivity policy
- C. vHBA policy
- D. Fibre Channel adaptor policy
- E. boot policy

Answer: AD

#### NEW QUESTION 43

A cisco Nexus 9000 series switch experiences a startup configuration corruption. The engineer must implement a procedure to recover configuration file from the switch. Which command set must be used?

- A. \* 1. Copy the running-configuration to the startup configuration.\* 2. Clear the current configuration of the switch.\* 3. Restart the device.\* 4. Copy a previously saved configuration file to the running configuration.
- B. \* 1. Clear the current configuration of the switch\* 2. Restart the device.\* 3. Copy the running configuration to the startup configuration\* 4. Copy a previously saved configuration file to the running configuration
- C. \* 1. Clear the current configuration of the switch\* 2. Restart the device.\* 3. Copy a previously saved configuration file to the running-configuration\* 4. Copy the running-configuration to the startup configuration.
- D. \* 1.Restarting device.\* 2. Copy the running-configuration file to a remote server.\* 3. Clear the current configuration of the switch.\* 4. Copy the running configuration to the startup configuration

Answer: C

#### Explanation:

Problems, such as memory corruption, can occur that make it necessary for you to recover your configuration from a backed-up version. Each time that you enter a copy running-config startup-config command, a binary file is created and the ASCII file is updated. A valid binary configuration file

reduces the overall boot time significantly. A binary file cannot be uploaded, but its contents can be used to overwrite the existing startup configuration. The write erase command clears the binary file.

#### SUMMARY STEPS

- \* 1. write erase
- \* 2. reload
- \* 3. copy configuration-file running-configuration
- \* 4. copy running-config startup-config <https://www.cisco.com/c/en/us/td/docs/switches/datacenter/nexus9000/sw/93x/fundamentals/configuration/guide>

#### NEW QUESTION 48

An engineer must build a lab replica of a Cisco UCS production environment. The file must be imported into a new Cisco UCS cluster using a Cisco UCS manager GUI. The file must be in XML format and be exported from Cisco UCS Manager using encrypted method. Which two configuration parameters should be selected to meet these requirements?. (Choose two.)

- A. Type: Logical configuration
- B. Protocol SCP
- C. Type Full state
- D. Protocol TFTP
- E. Type All configuration

**Answer:** BE

#### NEW QUESTION 51

An engineer must perform a backup operation of the Cisco UCS system. The backup must be transferred to a secure location using UDP and must contain information about VLANs, VSANs, and other policies. Also, the operations team requires the backup file to be in a human-readable format. Which configuration set meets these requirements?

- A. Type: System configuration Protocol: SCP
- B. Type: Logical configuration Protocol: TFTP
- C. Type: All configuration Protocol: FTP
- D. Type: Full state Protocol: SFTP

**Answer:** B

#### NEW QUESTION 53

A network engineer must prevent data corruption due to cross fabric communication in an FCoE environment. Which configuration must be applied to the Cisco Nexus Unified Switches to achieve this objective?

- A. Switch(config)#fcoe fcmmap 0e,fc,2a
- B. Switch(config-if)# no fcoe fcf-priority 0
- C. Switch(config-if) # shutdown lan
- D. Switch(config) # no fcoe fcf-priority

**Answer:** A

#### Explanation:

2. switch(config)# **fcoe fcmmap fabric-map**

3. (Optional) switch(config)# **no fcoe fcmmap fabric-map**

#### DETAILED STEPS

	Command or Action	Purpose
Step 1	switch# <b>configure terminal</b>	Enters configuration mode.
Step 2	switch(config)# <b>fcoe fcmmap fabric-map</b>	Configures the global FC-Map. The default value is 0E.FC.00. The range is from 0E.FC.00 to 0E.FC.FF.
Step 3	switch(config)# <b>no fcoe fcmmap fabric-map</b>	(Optional) Resets the global FC-Map to the default value of 0E.FC.00.

This example shows how to configure the global FC-Map:

```
switch# configure terminal
```

```
switch(config)# fcoe fcmmap 0e.fc.2a
```

[https://www.cisco.com/c/en/us/td/docs/switches/datacenter/nexus5000/sw/fcoe/b\\_Cisco\\_Nexus\\_5000\\_Series\\_NX-OS\\_Fibre\\_Channel\\_over\\_Ethernet\\_Configuration\\_Guide/\\_Cisco\\_Nexus\\_5000\\_Series\\_NX-OS\\_Fibre\\_Channel\\_over\\_Ethernet\\_Configuration\\_Guide\\_chapter3.html](https://www.cisco.com/c/en/us/td/docs/switches/datacenter/nexus5000/sw/fcoe/b_Cisco_Nexus_5000_Series_NX-OS_Fibre_Channel_over_Ethernet_Configuration_Guide/_Cisco_Nexus_5000_Series_NX-OS_Fibre_Channel_over_Ethernet_Configuration_Guide_chapter3.html)  
You can prevent data corruption due to cross-fabric talk by configuring an FC-Map that identifies the Fibre Channel fabric for this Cisco Nexus device. When the FC-Map is configured, the switch discards the MAC addresses that are not part of the current fabric.  
switch(config)# fcoe fcmmap fabric-map Configures the global FC-Map. The default value is 0E.FC.00. The range is from 0E.FC.00 to 0E.FC.FF.  
[https://www.cisco.com/c/en/us/td/docs/switches/datacenter/nexus5000/sw/fcoe/513\\_n1\\_1/b\\_Cisco\\_n5k\\_fcoe\\_co](https://www.cisco.com/c/en/us/td/docs/switches/datacenter/nexus5000/sw/fcoe/513_n1_1/b_Cisco_n5k_fcoe_co)

#### NEW QUESTION 55

An engineer must implement a VXLAN-based data center interconnect. The long-distance transport provided by a service provider is IP-based,supports a maximum MTU of 1554 bytes, and does not support outbound traffic replication. Which action must be take to build the data center interconnect?

- Answer: D**

Refer to the exhibit.

What is the result of implementing this configuration?

- Answer: B**

[https://www.cisco.com/c/en/us/td/docs/switches/datacenter/nexus5000/sw/san\\_switching/421\\_n1\\_1/b\\_Cisco\\_n5k\\_nxos\\_sanswitching\\_config\\_guide\\_rel421\\_n1\\_1/Cisco\\_n5k\\_nxos\\_sanswitching\\_config\\_guide\\_rel4](https://www.cisco.com/c/en/us/td/docs/switches/datacenter/nexus5000/sw/san_switching/421_n1_1/b_Cisco_n5k_nxos_sanswitching_config_guide_rel421_n1_1/Cisco_n5k_nxos_sanswitching_config_guide_rel4)

[https://www.cisco.com/en/US/docs/switches/datacenter/nexus5000/sw/configuration/guide/cli\\_rel\\_4\\_1/Cisco\\_Nexus\\_5000\\_Series\\_Switch\\_CLI\\_Software\\_Configuration\\_Guide\\_chapter50.html](https://www.cisco.com/en/US/docs/switches/datacenter/nexus5000/sw/configuration/guide/cli_rel_4_1/Cisco_Nexus_5000_Series_Switch_CLI_Software_Configuration_Guide_chapter50.html)

When a strict CoPP policy is implemented, which statement describes an event during which packets are dropped?

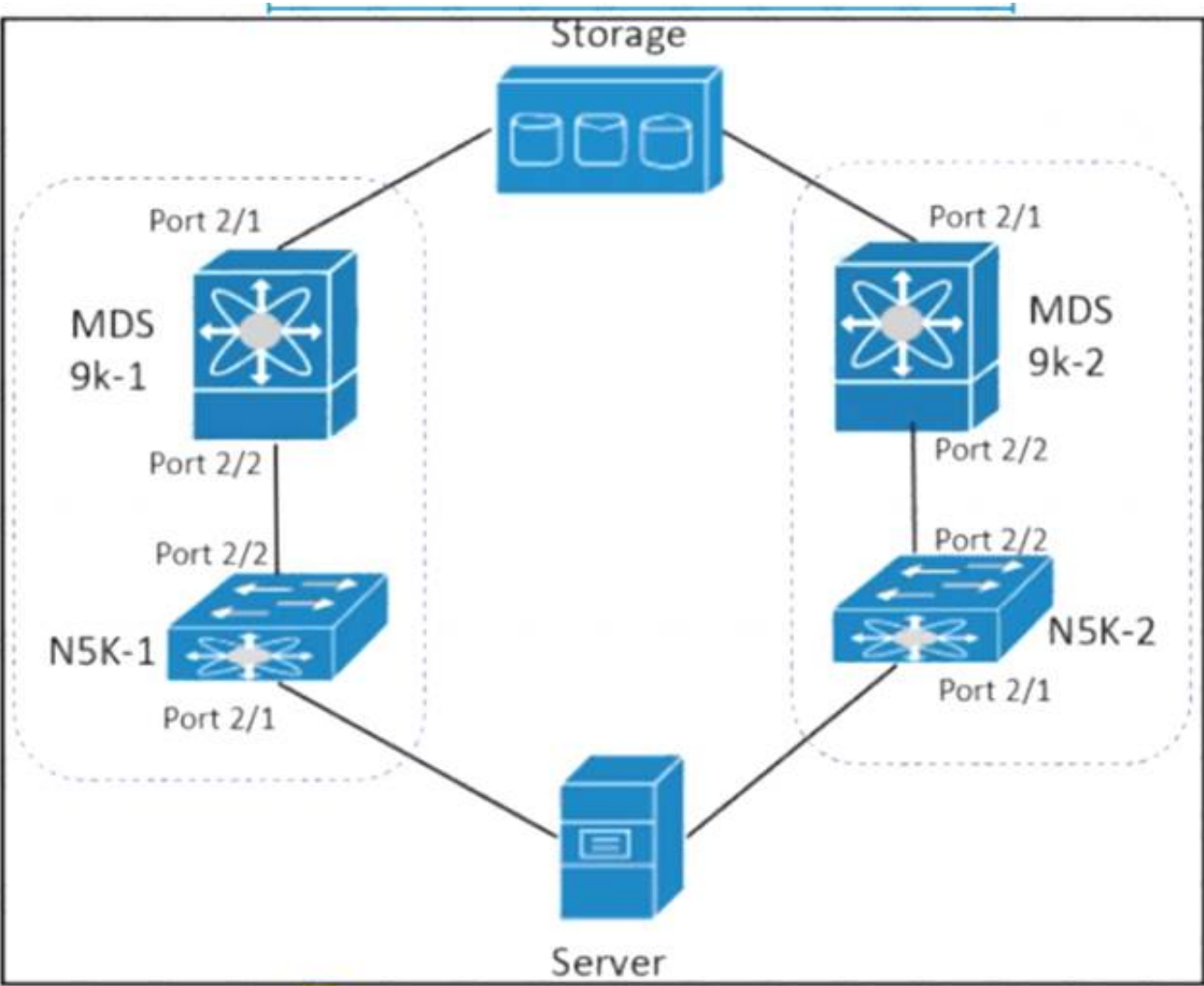
- Answer: B**

A large image upload is more probable to generate that level of traffic.  
15 SSH session would mean an average of 200pps per session, and they simply mention that the session remain connected, if there are no inputs in them they have 0pps and even a full config push would probably not require 200 packets total.

```
class copp-system-p-class-management set cos 2
police cir 3000 pps bc 32 packets conform transmit violate drop
```

[https://www.cisco.com/c/en/us/td/docs/switches/datacenter/nexus9000/sw/6-x/security/configuration/guide/b\\_Cisco\\_Nexus\\_9000\\_Series\\_NX-OS\\_Security\\_Configuration\\_Guide/b\\_Cisco\\_Nexus\\_9000\\_Series\\_NXOS\\_Security\\_Configuration\\_Guide\\_chapter\\_010001.html](https://www.cisco.com/c/en/us/td/docs/switches/datacenter/nexus9000/sw/6-x/security/configuration/guide/b_Cisco_Nexus_9000_Series_NX-OS_Security_Configuration_Guide/b_Cisco_Nexus_9000_Series_NXOS_Security_Configuration_Guide_chapter_010001.html)

Refer to the exhibit.



The server is sending traffic to the storage server using Fiber Channel protocol. The requirement is for the N5K-1 to forward traffic to MDS9k-1. Drag and drop the configuration steps from the right to complete the configuration for N5K-1 on the left. Not all configuration steps are used.

```
N5K-1# configuration terminal
N5K-1#(config) # 
N5K-1#(config) # interface fc 2/2
N5K-1#(config-if) # 
N5K-1#(config-if) # no shutdown
N5K-1#(config) # 
N5K-1#(config-if) # 
N5K-1#(config-if) # no shutdown
```

interface fc 2/1

interface port 2/1

interface port 2/2

npv enable

switchport mode F

switchport mode NP

- A. Mastered
- B. Not Mastered

Answer: A

Explanation:

npv enable, switchport mode F, interface fc2/1, switchport mode NP

NEW QUESTION 68

A network administrator is using the Cisco ESA with Cisco AMP to upload files to the cloud for analysis. The network is congested and is affecting communication. How will the Cisco ESA handle any files which need analysis?

- A. Cisco AMP calculates the SHA-256 fingerprint, caches it, and periodically attempts the upload.
- B. The Cisco ESA immediately makes another attempt to upload the file.
- C. The file is queued for upload when connectivity is restored.
- D. The file upload is abandoned.

Answer: A

NEW QUESTION 72

An engineer must create a scheduler configuration to create two backup jobs per day. The backup file must be copied to a server in the operations VRF. Which configuration accomplishes this task?

- A)



```
scheduler schedule name CNFGBACKUP
job name BACKUP-JOB
copy running-config tftp://10.19.11.12/$(SWITCHNAME)-$(TIMESTAMP).cfg vrf operations
time start now repeat 12:00
```

B)

```
scheduler schedule name CNFGBACKUP
job name BACKUP-JOB
show tech-support | redirect vrf operations tftp://10.19.11.12/$(SWITCHNAME)-$(TIMESTAMP).cfg
time start daily 12:30 0:30
```

C)

```
scheduler schedule name CNFGBACKUP
job name BACKUP-JOB
copy startup-config tftp://10.19.11.12/$(SWITCHNAME)-$(TIMESTAMP).cfg
time daily 12:30 0:30
```

D)

```
scheduler schedule name CNFGBACKUP
job name BACKUP-JOB
copy vrf operations config tftp://10.19.11.12/$(SWITCHNAME)-$(TIMESTAMP).cfg
time start 12:30 repeat 12
```

- A. Option A
- B. Option B
- C. Option C
- D. Option D

**Answer:** A

#### NEW QUESTION 75

Refer to the exhibit

```
switch1#show run interface Vlan 10

interface Vlan10
description Service Datacenter-Rack-A
ip address 209.165.200.225 255.255.255.224
!
end

switch1#
```

An engineer must mirror the traffic on a switch. The engineer locates the server port that requires monitoring on switch1, but the packet sniffer is on switch2. The engineer must configure the source IP address on switch1. Which command accomplishes this goal?

- A. monitor session 10 type erspan-source
- B. monitor erspan origin ip-address 209.165.200.225
- C. source ip 209.165.200.225
- D. source interface vbn512

**Answer:** B

#### NEW QUESTION 78

Which component is disrupted when the Cisco Integrated Management Controller is upgraded on a Cisco UCS series server?

- A. Cisco UCS Manager
- B. SAN traffic
- C. KVM sessions
- D. Data traffic

**Answer:** C

#### NEW QUESTION 79

An engineer updated firmware on Fabric Interconnects and activates it. However, the endpoint fails to boot from the new firmware image. What is expected to occur in this case?

- A. The system defaults to the backup image version

- B. The system defaults to and boots into GOLD firmware image
- C. The system defaults to the GOLD firmware image
- D. The system defaults to and boots into kickstart image

**Answer:** A

**Explanation:**

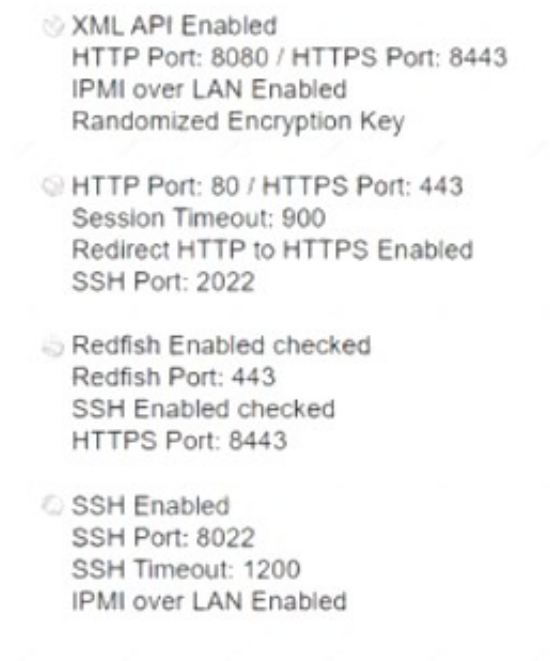
[https://www.cisco.com/c/en/us/td/docs/unified\\_computing/ucs/ucs-manager/CLI-User-Guides/Firmware-Mgmt/4-0/b\\_UCSM\\_CLI\\_Firmware\\_Management\\_Guide\\_4-0/b\\_UCSM\\_CLI\\_Firmware\\_Management\\_Guide\\_4-0\\_chapter\\_011.html](https://www.cisco.com/c/en/us/td/docs/unified_computing/ucs/ucs-manager/CLI-User-Guides/Firmware-Mgmt/4-0/b_UCSM_CLI_Firmware_Management_Guide_4-0/b_UCSM_CLI_Firmware_Management_Guide_4-0_chapter_011.html)

**NEW QUESTION 83**

An engineer implements a Cisco UCS C-Series Server that must adhere to these security requirements:

- Unencrypted communication must be disabled.
- The session timeout must not exceed 15 minutes.
- Unencrypted traffic must be automatically diverted.
- CLI-based management must use nondefault ports.

Which configuration set meets these requirements?



The screenshot shows four radio button options for configuration sets:

- ☒ XML API Enabled  
HTTP Port: 8080 / HTTPS Port: 8443  
IPMI over LAN Enabled  
Randomized Encryption Key
- ☐ HTTP Port: 80 / HTTPS Port: 443  
Session Timeout: 900  
Redirect HTTP to HTTPS Enabled  
SSH Port: 2022
- ☐ Redfish Enabled checked  
Redfish Port: 443  
SSH Enabled checked  
HTTPS Port: 8443
- ☐ SSH Enabled  
SSH Port: 8022  
SSH Timeout: 1200  
IPMI over LAN Enabled

- A. Option A
- B. Option B
- C. Option C
- D. Option D

**Answer:** B

**NEW QUESTION 86**

A network engineer repeatedly saves a configuration on Catalyst switches to NVRAM using the write memory command. What action should be taken to implement the same action on Nexus switches?

- A. Use the write memory command to save the configuration.
- B. Use the alias command to use the write memory command.
- C. Use the exit command to leave the configuration mode and save the configuration automatically.
- D. Use the wri command to use the copy running-config startup-config command.

**Answer:** B

**NEW QUESTION 88**

An engineer must implement a Cisco UCS system at a customer site. One of the requirements is to implement SAN boot. The storage system maps the source WWPN to a unique LUN. Which method does Cisco recommend to configure the SAN boot?

- A. Create a SAN boot policy in which every initiator is mapped to the same target LUN.
- B. Define the vHBAs as bootable and leave the default values on the target definition.
- C. Define the vHBAs as bootable and leave the boot target definition empty.
- D. Create a SAN boot policy in which every initiator is mapped to a different target LUN.

**Answer:** A

**Explanation:**

While you have multiple zones consisting of FC vHBAs and storage target wwps for SAN Fabrics A and B, you are ultimately booting off of the same boot LUN. Multiple paths to get to the same boot device which correspond with the same LUN ID.  
[https://www.cisco.com/c/en/us/td/docs/unified\\_computing/ucs/ts/guide/UCSTroubleshooting/UCSTroubleshooting\\_chapter\\_0110.html#r\\_sanarrayconfigurationchecklist](https://www.cisco.com/c/en/us/td/docs/unified_computing/ucs/ts/guide/UCSTroubleshooting/UCSTroubleshooting_chapter_0110.html#r_sanarrayconfigurationchecklist)

**NEW QUESTION 89**

A network engineer must create an EEM script that saves a copy of the running configuration on bootflash and writes a message to syslog when a user saves the configuration to a Cisco Nexus switch. Which configuration set should be applied to complete this task?

- Ⓐ event manager applet local- backup  
 event cli match "copy running-config startup-config"  
 action 1 cli copy running-config bootflash:/current\_config.txt  
 action 2 syslog msg Configuration saved and copied to bootflash
- Ⓑ event manager applet local- backup  
 event cli match "write memory"  
 action 1 cli copy running-config bootflash:/current\_config.txt  
 action 2 snmp-trap strdata "Configuration saved and copied to bootflash"
- Ⓒ event manager applet local- backup  
 event cli match "copy running-config startup-config"  
 action 1 cli copy running-config bootflash:/current\_config.txt  
 action 2 syslog msg Configuration saved and copied to bootflash  
 action 3 event-default
- Ⓓ event manager applet local- backup  
 event cli match "write memory"  
 action 1 cli copy running-config bootflash:/current\_config.txt  
 action 2 syslog msg Configuration saved and copied to bootflash  
 action 3 event-default

- A. Option A
- B. Option B
- C. Option C
- D. Option D

**Answer: C**

**Explanation:**

The command write memory is not valid in NX-OS  
 The "event-default"

If you want to allow the triggered event to process any default actions, you must configure the EEM policy to allow the default action. For example, if you match a CLI command in a match statement, you must add the event-default action statement to the EEM policy or EEM will not allow the CLI command to execute.

**NEW QUESTION 93**

Refer to the exhibit.

```

N7K-1
spanning-tree vlan 1-10 priority 8192

vpc domain 100
  role priority 100
  peer-keepalive destination 10.1.1.2 source 10.1.1.1
vrf default
  delay restore 60
  peer-switch
  auto-recovery
  ip arp synchronize

N7K-2
spanning-tree vlan 1-10 priority 8192

vpc domain 100
  role priority 200
  peer-keepalive destination 10.1.1.1 source 10.1.1.2
vrf default
  delay restore 60
  peer-switch
  auto-recovery
  ip arp synchronize
  
```

The STP priority of N7K-1 and N7K-2 are the lowest in the network. Which statement describes STP on the vPC?

- A. N7K-1 appears as the STP root.
- B. N7K-2 appears as the STP root.
- C. N7K-1 and N7K-2 appear as a single STP root.
- D. N7K-1 preempts N7K-2 as the STP root.

**Answer: C**



NEW QUESTION 97

An engineer must migrate a Cisco UCS C-Series server from Cisco SingleConnect to direct integration mode. The Cisco UCS Manager Rack Server Discovery Policy and Rack Management Connection Policy are set to immediate and Auto-Acknowledge. Which set of steps accomplishes this task?

- ☒ Disconnect the cables from the FEX.  
Connect the cables to appliance ports on the fabric interconnect.  
Reset the Cisco IMC of the server.
- ☐ Disconnect the cables from the FEX.  
Connect the cables to server ports on the fabric interconnect.  
Reset the Cisco IMC of the server.
- ☐ Disconnect the cables from the FEX.  
Connect the cables to appliance ports on the fabric interconnect.  
Reacknowledge the server.
- ☐ Disconnect the cables from the FEX.  
Connect the cables to server ports on the fabric interconnect.  
Reacknowledge the server.

- A. Option A
- B. Option B
- C. Option C
- D. Option D

Answer: D

NEW QUESTION 102

Drag and drop the Hyperflex characteristics from the left onto the appropriate Hyper Hex node types on the right.

uses only SSD drives for caching

contains HDDs for the capacity layer

uses SSD drives or NVMe storage for caching

has SSD drives for the capacity layer

recommended for repeatable and sustainable high performance, especially for scenarios with a larger working set of data

recommended for capacity-sensitive solutions, lower budgets, and fewer performance-sensitive applications

Hybrid Node

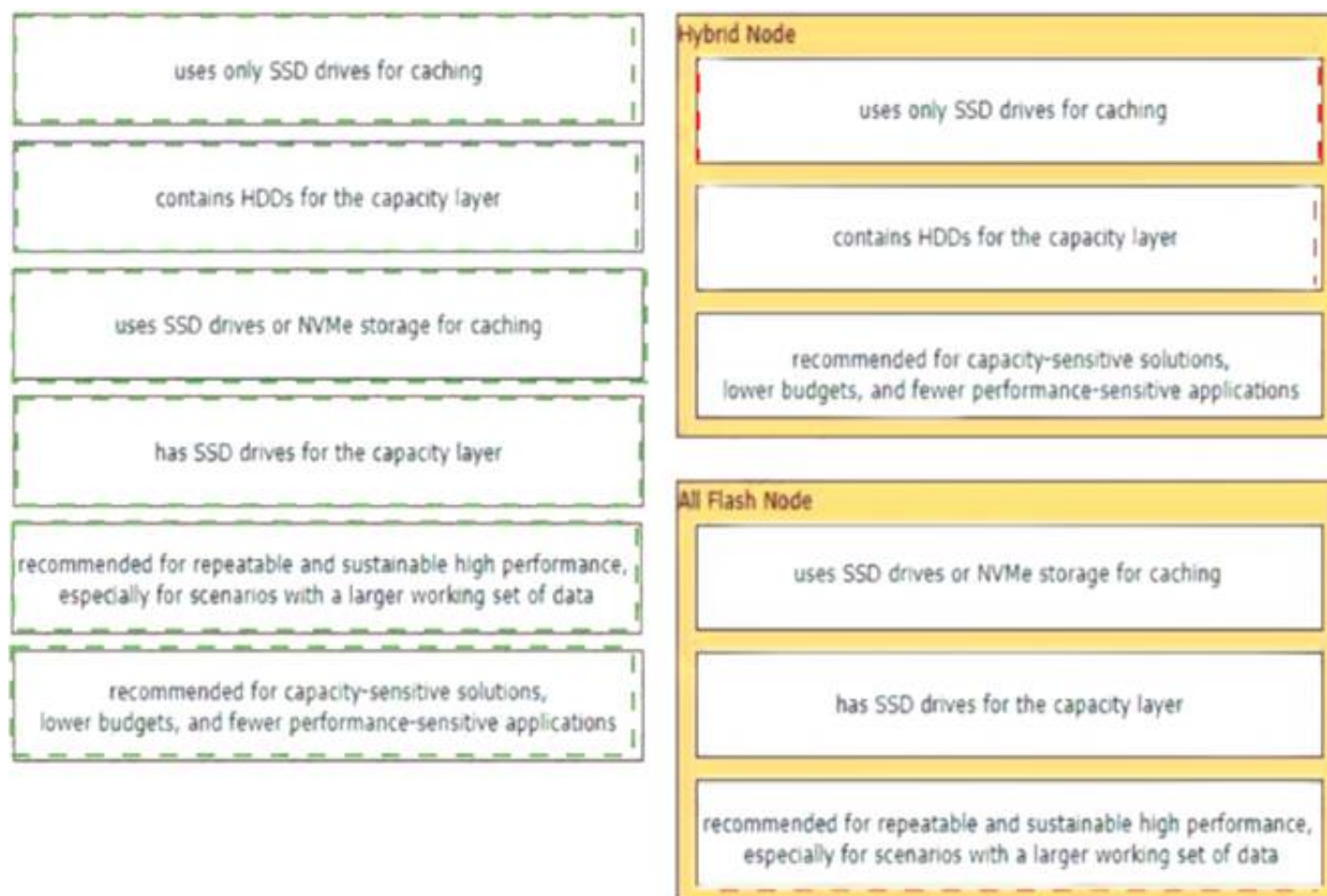
All Flash Node

- A. Mastered
- B. Not Mastered

Answer: A

Explanation:





#### NEW QUESTION 106

A network architect must design an automation solution to initially support networking and also support the server infrastructure in the future. To keep configuration consistency, the network team requires a solution that enforces the desired state of the network and reverts any manual configuration. Which solution meets these goals?

- A. NX-API
- B. Ansible
- C. Terraform
- D. Puppet

**Answer: D**

#### NEW QUESTION 110

A network architect considers a Cisco HyperFlex design solution for a company. The proposed solution is for a virtual environment that is not performance-sensitive, but the solution must have high storage capacity and a low cost. Which Cisco HyperFlex storage configuration should be used?

- A. All-Flash
- B. Hybrid
- C. All-SAN
- D. All-NVMe

**Answer: B**

#### Explanation:

<https://www.cisco.com/c/en/us/products/collateral/hyperconverged-infrastructure/hyperflex-hx-series/white-pap> Hybrid contains HDD for capacity.

#### NEW QUESTION 113

Which Cisco UCS Manager XML encoded backup type must be used to back up user names, roles, and service profiles?

- A. Full State Configuration
- B. Logical Configuration
- C. All Configuration
- D. System Configuration

**Answer: C**

#### NEW QUESTION 117

A content delivery network sends video traffic to a multicast distribution device where the receiver requests the traffic from the multicast distribution device through an IGMP join message. When the traffic reaches the multicast routing device from a CDN the switching network populates the multicast routing table in the group (S, G) and the multicast distribution device sends the required traffic back to the receiver. Which feature is used to send back the traffic from the streamer to the receiver in the group (S, G)?

- A. RP
- B. IGMP
- C. Reverse Path Forwarding
- D. Source Specific Multicast

**Answer: C**

#### NEW QUESTION 120

An engineer installed a new Nexus switch with the mgm0interface in vrf management. Connectivity to the rest of the network needs to be tested from the guest shell of the NX-OS. Which command tests connectivity from the shell of the NX-OS?

- ☐ [guestshell@guestshell ~]\$ ping 173.37.145.84 vrf management
- ☐ [guestshell@guestshell ~]\$ chvrf management ping 173.37.145.84
- ☒ [guestshell@guestshell ~]\$ iping vrf management ip 173.37.145.84
- ☐ [guestshell@guestshell ~]\$ dohost "ping vrf management 173.37.145.84"

- A. Option A
- B. Option B
- C. Option C
- D. Option D

**Answer: B**

#### NEW QUESTION 123

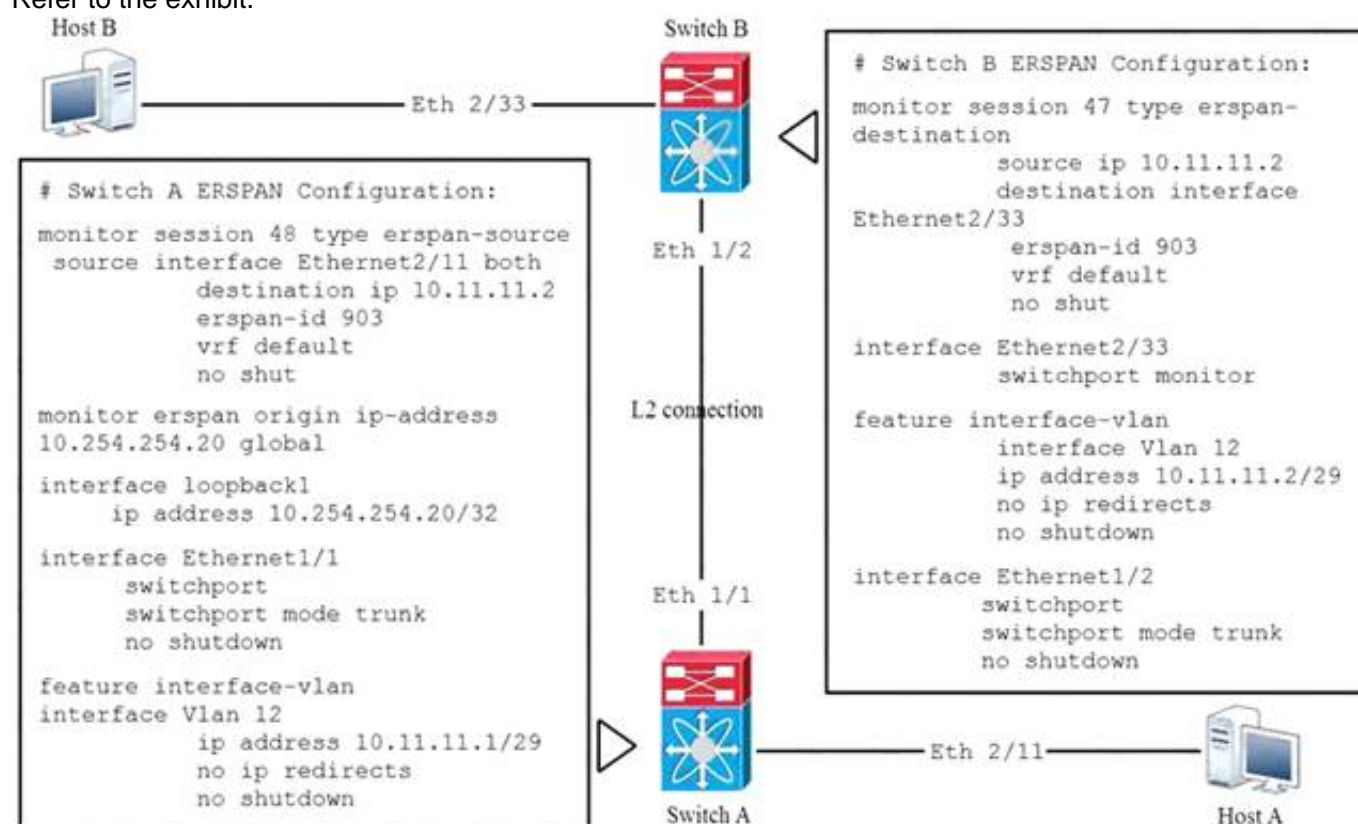
An engineer configures a role for a new user in Cisco UCS Manager The role should allow the user to configure vHBAs, vNICs, and server port types. Which role should be assigned to allow the engineer to complete this task?

- A. network administrator
- B. operations
- C. server-compute
- D. AAA administrator

**Answer: A**

#### NEW QUESTION 125

Refer to the exhibit.



Which statement about the ERSPAN configuration in this environment is true.

- A. Host A is the source of ERSPAN spanned traffic and host B is the traffic analyzer.
- B. Host B is the source of ERSPAN spanned traffic and host A is the traffic analyzer.
- C. The session number of the source of ERSPAN spanned traffic must have a session ID of 48 for the traffic analyzer to receive the traffic.
- D. The session number of the source of ERSPAN spanned traffic must have a session ID of 47 for the traffic analyzer to receive the traffic.

**Answer: A**

#### NEW QUESTION 127

An engineer must export the Cisco UCS Manager configuration for backup purposes. The requirement is to export the configuration that contains the AAA and RBAC configuration Also the file must be stored a human-readable format Much backup type must be selected to meet these requirements?

- A. logical configuration
- B. system configuration
- C. fun state
- D. all configuration

**Answer: B**

#### NEW QUESTION 129

Refer to the exhibit.

```
N7Switch# sh run | section callhome
callhome
email-contact admin@acme.com
phone-contact +1-800-123-4567
streetaddress 111 Somestreet st. Sometown, Somewhere
destination-profile full_txt_email-addr netadmin@acme.com
transport email smtp-server 192.168.1.25 port 25
transport email from N7Switch@acme.com
enable
alert-group Inventory user-def-cmd show logging last 100
N7Switch#
```

A network engineer is configuring the Smart Call Home feature on a Cisco Nexus Series Switch. An email must be generated that contains the last 100 lines of the log every time a new piece of hardware is inserted into the chassis. Which command must be added to the configuration to receive the email?

- A. alert-group Linecard-Hardware user-def-cmd show logging last 100
- B. destination-profile Operations alert-group Inventory
- C. destination-profile Operations message-level 2
- D. alert-group Operations user-def-cmd show logging last 100

**Answer: A**

### NEW QUESTION 133

An engineer is implementing the Cisco ACI fabric and must create two different vPCs from leaf switches A and B. The vPCs are deployed as follows:

- vPC 1 encompasses ports Eth 1 /1 on leaf A and B and connects to server 1.
- vPC 2 encompasses port Eth1/2 on leaf A and B and connects to server 2.

A leaf switch profile listing leaves A and B is already configured Which ACI object must be created to meet these requirements?

- A. two vPC interface policy groups
- B. one access port interface policy group
- C. two PortChannel interface policy groups
- D. one vPC interface policy group

**Answer: A**

### NEW QUESTION 137

An engineer must implement the FCoE on the Cisco Nexus 9000 Series Switch-based infrastructure. The deployment will contain dual-homed fabric extenders and must support jumbo frames with port channels. Which two sets of actions complete the configuration? (Choose two.)

- ☒ Configure the interface with mtu 9516.  
Disable the feature NPIV.
- ☒ Create a virtual Fibre Channel interface.  
Bind vFC to physical interface.
- ☐ Create a FCoE switch profile.  
Enable config sync.
- ☐ Create a dedicated VSAN for FEX.  
Bind VSAN to FEX uplinks.
- ☐ Execute fcoe enable-fex.  
Configure FEX uplinks with mtu 9216.

- A. Option A
- B. Option B
- C. Option C
- D. Option D
- E. Option E

**Answer: BE**

### NEW QUESTION 138

Which virtualization feature is provided by network-attached storage?

- A. ALUA path redirection
- B. hypervisor host boot LUN
- C. VM cluster shared disk
- D. raw device passthrough

**Answer: C**

### NEW QUESTION 140



Refer to the exhibit.

```
UCS-A# scope adapter 1/1/1
UCS-A# /chassis/server/adapter # show image
Name                               Type      Version    State
-----
ucs-m81kr-vic.2.2.1b.bin          Adapter   2.2(1b)    Active

UCS-A# /chassis/server/adapter # update firmware 2.2(1b)
UCS-A# /chassis/server/adapter* # activate firmware 2.2(1b)
set-startup-only
UCS-A# /chassis/server/adapter* # commit-buffer
UCS-A# /chassis/server/adapter #
```

What is the result of this series of commands?

- A. It reboots the server immediately.
- B. It verifies the firmware update on the server.
- C. It activates the firmware on the next adapter boot.
- D. It updates the firmware on adapter 1/1/1 immediately.

**Answer: C**

**Explanation:**

[https://www.cisco.com/c/en/us/td/docs/unified\\_computing/ucs/ucs-manager/CLI-User-Guides/Firmware-Mgmt/](https://www.cisco.com/c/en/us/td/docs/unified_computing/ucs/ucs-manager/CLI-User-Guides/Firmware-Mgmt/) Graphical user interface, text, application, email  
Description automatically generated

Step 6	UCS-A /chassis/server/adapter # activate firmware version-num [set- startup-only ]	Activates the selected firmware version on the adapter.  Use the <b>set-startup-only</b> keyword if you want to move the activated firmware into the pending-next-boot state and not immediately reboot the server. The activated firmware does not become the running version of firmware on the adapter until the server is rebooted. You cannot use the <b>set-startup-only</b> keyword for an adapter in the host firmware package.
--------	--	---

**NEW QUESTION 145**

An engineer must configure the HSRP protocol to implement redundancy using two Cisco Nexus Series Switches In addition, the HSRP must meet these requirements

- Switch1 must retain the primary role if switch2 goes offline
  - Switch1 must retain the primary role until normal conditions are restored.
  - Switch1 and switch2 must ensure that the routing tables are converged before taking the active role
  - switch2 must retain the primary role if the default gateway is not reachable
- Drag and drop the configuration commands from the right to the left to meet the requirements. The commands are used more than once Not all commands are used

```
! switch1
track 100 ip route 0.0.0.0/0 reachability

interface ethernet 1/1
ip 209.165.200.226/27

hsrp 200
ip 209.165.200.225
priority 210
[ ]
[ ]
no shutdown

! switch2
track 100 ip route 0.0.0.0/0 reachability

interface ethernet 1/1
ip 209.165.200.227/27

hsrp 200
ip 209.165.200.225
[ ]
[ ]
no shutdown
```

```
preempt delay minimum 30
track 100 decrement 200
track 200 decrement200
preempt sync 30
```

- A. Mastered
- B. Not Mastered

**Answer: A**



**Explanation:**

```
! switch1
track 100 ip route 0.0.0.0/0 reachability

interface ethernet 1/1
ip 209.165.200.226/27

hsrp 200
ip 209.165.200.225
priority 210
track 100 decrement 200
preempt delay minimum 30
no shutdown

! switch2
track 100 ip route 0.0.0.0/0 reachability

interface ethernet 1/1
ip 209.165.200.227/27

hsrp 200
ip 209.165.200.225
track 100 decrement 200
preempt delay minimum 30
no shutdown
```

```
preempt delay minimum 30
track 100 decrement 200
track 200 decrement 200
preempt sync 30
```

**NEW QUESTION 147**

What are two types of FC/FCoE oversubscription ratios? (Choose two.)

- A. server storage to end-node count
- B. port bandwidth to uplink bandwidth
- C. edge ISL bandwidth to core ISL bandwidth
- D. host bandwidth to storage bandwidth
- E. switch processing power to end-node processing power

**Answer:** CD

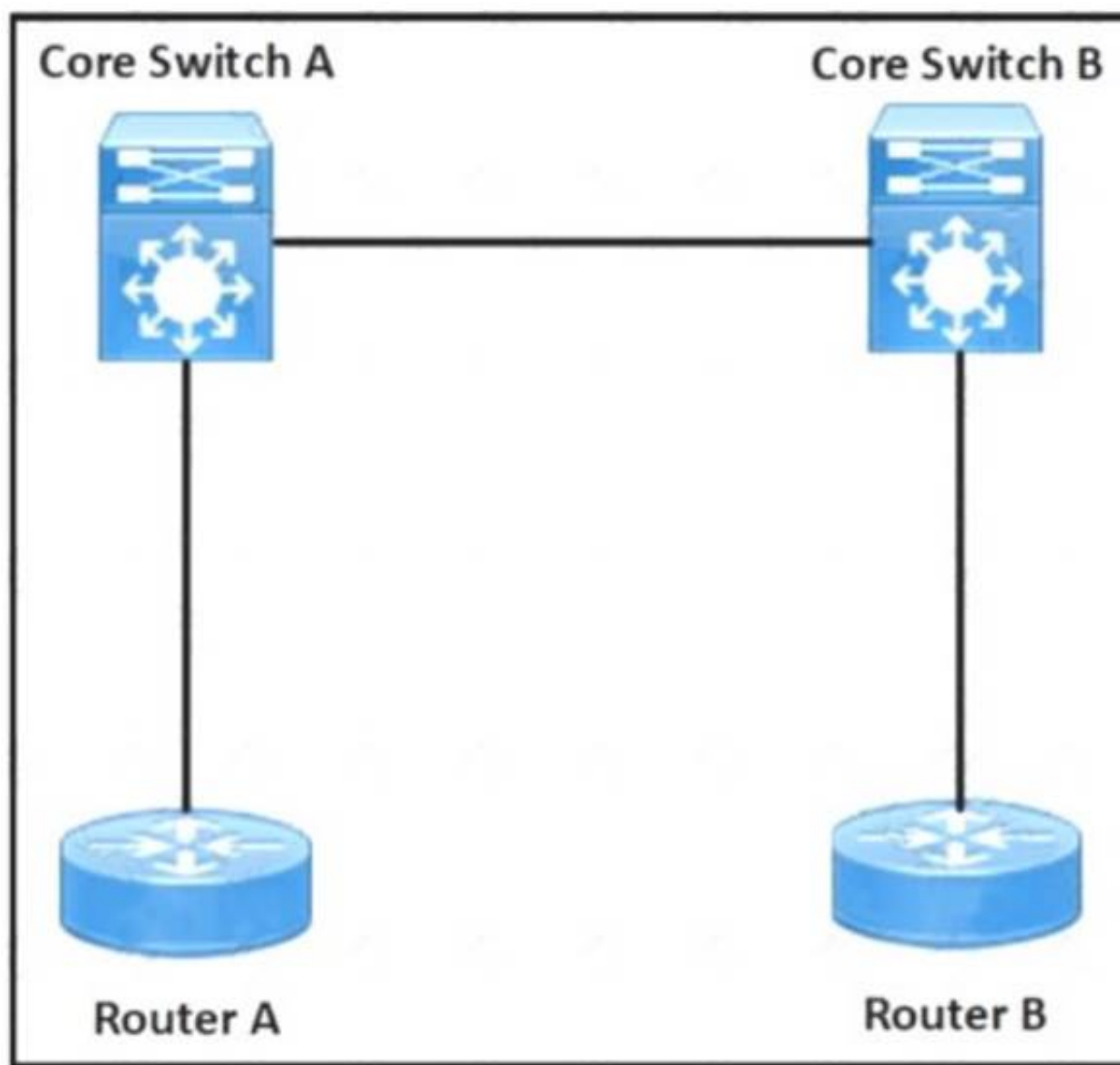
**Explanation:**

<https://www.ciscolive.com/c/dam/r/ciscolive/us/docs/2017/pdf/BRKDCN-1121.pdf>

[https://www.cisco.com/c/en/us/td/docs/switches/datacenter/nexus5000/sw/operations/n5k\\_fcoe\\_ops.html](https://www.cisco.com/c/en/us/td/docs/switches/datacenter/nexus5000/sw/operations/n5k_fcoe_ops.html)

**NEW QUESTION 152**

Refer to the exhibit.



```
feature vn-segment-vlan-based
feature nv overlay

vlan 10
  vn-segment 10010

Interface Loopback0
  ip address 10.10.0.1/32
  ip pim sparse mode
```

A network engineer configures the VXLAN between the routers in a data center. The VLAN 10 must be extended between routers A and B. The initial VXLAN configuration is completed on Router A. Which configuration finishes the VXLAN configuration on Router A?

- A.
- ```
vrf context tenant1
vni 10010

Interface nve1
source-interface lo0
no shutdown
member vni 10010 interface 10.10.0.1
```
- B.
- ```
system bridge-domain 10
member vni 10010
interface nve1
no shutdown
source-interface lo0
```
- C.
- ```
Interface nve1
no shutdown
source-interface lo0
vni 10100 l2
rd auto
```
- D.
- ```
Interface nve1
no shutdown
source-interface lo0
member vni 10010 mcast-group 231.1.1.1
```

**Answer:** C

#### NEW QUESTION 153

An engineer must configure multiple EPGs on a single access port in a large Cisco ACI fabric without using VMM integration. The relevant access policies and tenant policies have been created. A single AAEP is used to configure the access port in the fabric. Which two additional steps must be taken to complete the configuration? (Choose two.)

- A. A contract must be defined between the EPGs
- B. The EPGs must be linked to the correct physical domain
- C. The EPGs must link directly to the corresponding AAEP
- D. The corresponding bridge domains must be configured in legacy mode
- E. The EPGs must be configured as static ports

**Answer:** BE

#### Explanation:

Attach EPG to Physical Domain (to AAEP through it) and add static ports to EPG

Contract is needed to allow communication between two EPGs, or EPG and L3out or between two L3out

#### NEW QUESTION 154

Which MAC address is an HSRP version 2?

- A. 0100.5E7F.FFFF
- B. 3799.9943.3000
- C. 0000.0C9F.F0C8
- D. 0000.0C07.AC1H

**Answer:** C

#### NEW QUESTION 156

A new user with access privileges in the Finance department moves to a new Admin department. The user must have access privileges to the Admin department data and applications inside the Cisco UCS Manager Which set of changes must be implemented in Cisco UCS Central for the user to acquire the privileges?

- A. Create an Admin user account and remove the authentication service for the Finance privileges.
- B. Disable the Finance user account and add the authentication service for the Admin privileges.
- C. Create a new locale Admin and add the Admin department to the Admin local
- D. Delete the old locale
- E. Finance and remove the Finance department from the Finance locale.

**Answer:** C

#### NEW QUESTION 157

Which two settings must be configured before enabling a Cisco UCS Manager domain for Cisco Intersight connectivity? (Choose two.)

- A. syslog redirection
- B. DNS servers
- C. SMTP servers
- D. NTP servers
- E. SMTP reply-to-address

**Answer:** BD

#### Explanation:

[https://www.cisco.com/c/en/us/td/docs/unified\\_computing/ucs/ucs-manager/GUI-User-Guides/Admin-Management/4-1/b\\_Cisco\\_UCS\\_Admin\\_Mgmt\\_Guide\\_4-1/m\\_gui\\_cisco\\_intersight\\_management.html](https://www.cisco.com/c/en/us/td/docs/unified_computing/ucs/ucs-manager/GUI-User-Guides/Admin-Management/4-1/b_Cisco_UCS_Admin_Mgmt_Guide_4-1/m_gui_cisco_intersight_management.html)

#### NEW QUESTION 160

Host 1 is in VLAN 100 located is DataCenter 1 and Host2 is in VLAN200 located in DataCenter2. Which OTV VLAN mapping configuration allows Layer 2 connectivity between these two hosts?

A. DC1:  
**interface Overlay1**  
**otv extend-vlan 100**  
**otv vlan mapping 100 to 200**

DC2:  
**interface Overlay1**  
**otv extend-vlan 100**  
**otv vlan mapping 100 to 200**

B. DC1:  
**interface Overlay1**  
**otv extend-vlan 100**  
**otv vlan mapping 100 to 200**

DC2:  
**interface Overlay1**  
**otv extend-vlan 200**

C. DC1:  
**interface Overlay1**  
**otv extend-vlan 100**

DC2:  
**interface Overlay2**  
**otv extend-vlan 200**

D. DC1:  
**interface Overlay1**  
**otv extend-vlan 100**

DC2:  
**interface Overlay1**  
**otv extend-vlan 200**

- A. Option A
- B. Option B
- C. Option C
- D. Option D

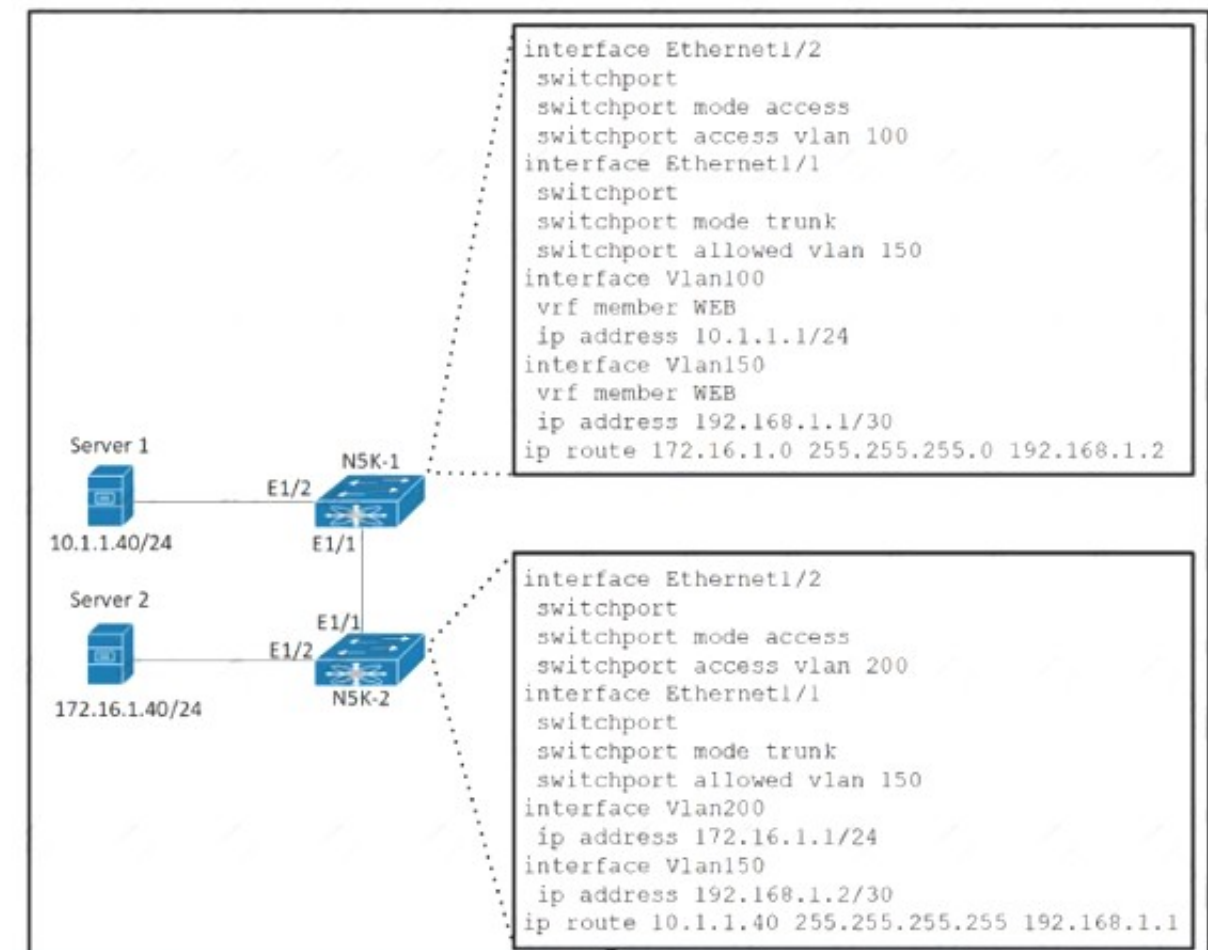
**Answer: B**

**Explanation:**

<https://www.cisco.com/c/en/us/support/docs/switches/nexus-7000-series-switches/200998-Nexus-7000-OTV-V>  
<https://www.cisco.com/c/en/us/support/docs/switches/nexus-7000-series-switches/200998-Nexus-7000-OTV-V>

**NEW QUESTION 165**

Refer to the exhibit.



The gateway of Server 1 is in the VLAN 100 SVI on N5K-1 and the gateway of Server 2 is in the VLAN 200 SVI on N5K-2. Server 1 must connect to Server 2 using unidirectional traffic. Which action accomplishes this requirement?

- A. Add VLAN 100 and 200 to the allowed VLANs list on the Ethernet 1/1 interface on N5K-1.
- B. Assign VRF WEB membership to interfaces VLAN 150 and 200 on N5K-2.
- C. Configure access VLAN 100 on interface Ethernet 1/2 on N5K-2.
- D. Create a static route in VRF WEB for the subnet of Server 2 on N5K-1

**Answer: B**

**NEW QUESTION 169**

An engineer changed a configuration and must perform a rollback. Which statement applies to a Cisco Nexus 5600 Series switch?

- A. Errors are skipped when an atomic rollback type is triggered.
- B. A user who is assigned to the network-operator user role can perform a rollback.
- C. The configuration rollback functionality is disabled when FCoE is enabled.
- D. A system checkpoint is generated automatically when the running configuration is saved to NVRAM.

**Answer: C**

**Explanation:**

[https://www.cisco.com/c/en/us/td/docs/switches/datacenter/nexus5000/sw/system\\_management/503\\_n1\\_1/cisco\\_n5k\\_system\\_mgmt\\_cg\\_rel\\_503\\_n1\\_1\\_chapter11.pdf](https://www.cisco.com/c/en/us/td/docs/switches/datacenter/nexus5000/sw/system_management/503_n1_1/cisco_n5k_system_mgmt_cg_rel_503_n1_1_chapter11.pdf)  
[https://www.google.com/url?sa=t&source=web&rct=j&url=https://www.cisco.com/c/en/us/td/docs/switches/datacenter/nexus5000/sw/system\\_management/503\\_n1\\_1/cisco\\_n5k\\_system\\_mgmt\\_cg\\_rel\\_503\\_n1\\_1\\_chapter11.pdf&ved=2ahUKEwjQ8ubTuK3xAhWm3jgGHZ9gB0oQFjAAegQIBRAC&usg=AOvVaw2j0nnvXiChAoVoovX2Qx0g](https://www.google.com/url?sa=t&source=web&rct=j&url=https://www.cisco.com/c/en/us/td/docs/switches/datacenter/nexus5000/sw/system_management/503_n1_1/cisco_n5k_system_mgmt_cg_rel_503_n1_1_chapter11.pdf&ved=2ahUKEwjQ8ubTuK3xAhWm3jgGHZ9gB0oQFjAAegQIBRAC&usg=AOvVaw2j0nnvXiChAoVoovX2Qx0g)

**NEW QUESTION 172**

A host EPG Client wants to talk to a webserver in EPG Web. A contract with default settings is defined between EPG Client and EPG Web, which allows TCP communication initiated by the client toward the webserver with TCP destination port 80. Which statement is true?

- A. If EPG Web is made a preferred group member, a contract between EPG Client and EPG Web is no longer required for the host in EPG Client to reach the webserver in EPG Web.
- B. If vzAny is configured to consume and provide a "deny all" contract, traffic between EPG Client and EPG Web is no longer allowed.
- C. The host in EPG Client is allowed to connect to TCP destination port 80 on the webserver in EPG Web. The webserver will not be allowed to initiate a separate TCP connection to a host port with TCP source port 80.
- D. The host in EPG Client is allowed to connect to TCP destination port 80 on the webserver in EPG Web. The webserver is allowed to initiate a separate TCP connection to a host port with TCP source port 80.



Answer: D

**Explanation:**

Apply Both Direction and Reverse Filter Port in the subject for the filter. These two options are by default enabled...This means that if the provider EPG initiates traffic toward the consumer EPG, the Cisco ACI fabric allows it for any destination ports if the source port is 80.

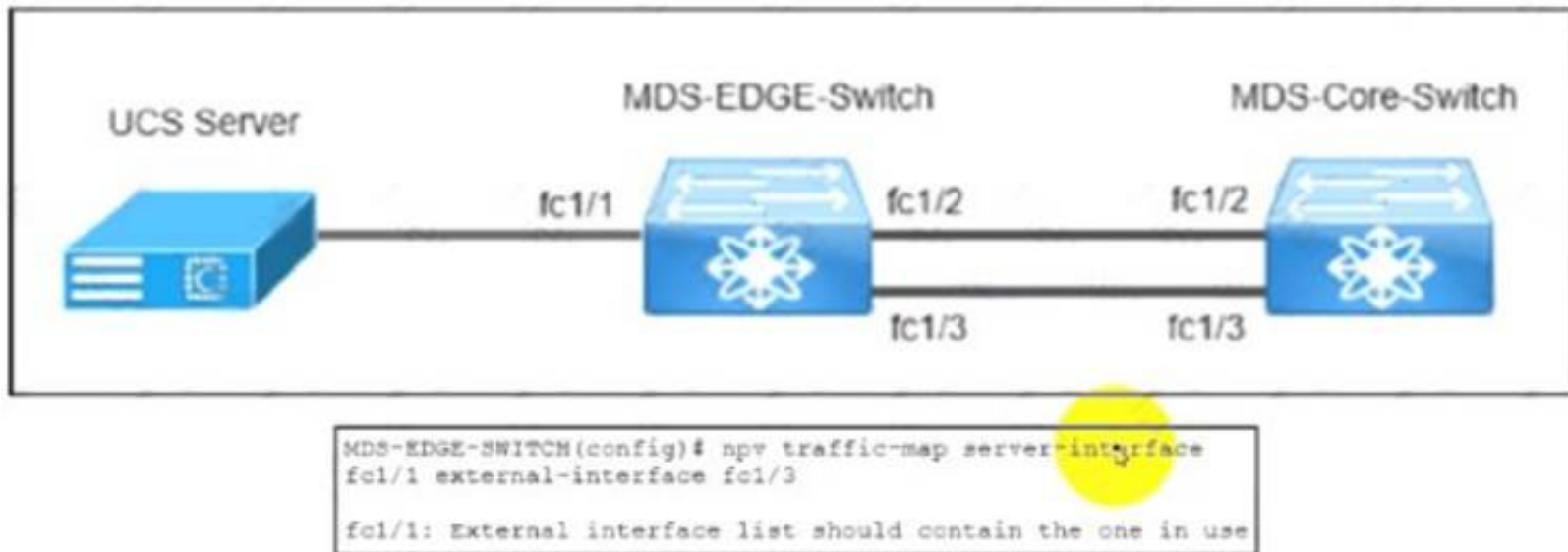
[https://www.cisco.com/c/en/us/td/docs/switches/datacenter/aci/apic/sw/1-x/Operating\\_ACI/guide/](https://www.cisco.com/c/en/us/td/docs/switches/datacenter/aci/apic/sw/1-x/Operating_ACI/guide/)

b\_Cisco\_Operating\_ACI/b\_Cisco\_Operating\_ACI\_chapter\_01000.html Reverse filter and apply in both directions is default.

If a filter allows traffic from any consumer port to a provider port (e.g. 8888), if reverse port filtering is enabled and the contract is applied both directions (say for TCP traffic), either the consumer or the provider can initiate communication. The provider could open up a TCP socket to the consumer using port 8888, whether the provider or consumer sent traffic first. [https://www.cisco.com/c/en/us/td/docs/switches/datacenter/aci/apic/sw/1-x/Operating\\_ACI/guide/b\\_Cisco\\_Operating\\_ACI/b\\_Cisco\\_Operating\\_ACI\\_chapter\\_01000.html](https://www.cisco.com/c/en/us/td/docs/switches/datacenter/aci/apic/sw/1-x/Operating_ACI/guide/b_Cisco_Operating_ACI/b_Cisco_Operating_ACI_chapter_01000.html)

**NEW QUESTION 177**

Refer to the exhibit.



The MDS-EDGE-Switch and MDS-Core-Switch are configured with NPV and NPIV features. The FLOGI from Cisco UCS is received by the MDS-Core-Switch on interface fc1/2. An engineer tried to move all traffic between the MDS-EDGE-Switch and MOS-Core-Switch from interface fc 1/2 to fc1/3, but the attempt failed. Which set of actions completes the configuration?

- ☐ Disable the NPV feature in the MDS-EDGE-Switch.  
Re-enable the NPV feature.  
Disable interface fc1/1.
- ☐ Disable the NPIV feature in the MDS-EDGE-Switch.  
Re-enable the NPIV feature.  
Disable interface fc1/3.
- ☐ Shut down fc1/1 in the MDS-EDGE-Switch.  
Re-apply the command.  
Enable interface fc1/1.
- ☒ Shutdown fc1/3 in the MDS-EDGE-Switch.  
Re-apply the command.  
Enable interface fc1/3.

- A. Option A
- B. Option B
- C. Option C
- D. Option D

Answer: C

**NEW QUESTION 180**

Which two actions should be taken before an upgrade is started on a Cisco MDS switch? (Choose two.)

- A. check the impact of the upgrade using the show install all impact command
- B. disable Cisco Fabric Services
- C. back up the configuration
- D. free up space on the USB3 device by deleting old Cisco NX-OS image files
- E. make the primary supervisor the active supervisor

Answer: AC

**Explanation:**

[https://www.cisco.com/c/en/us/td/docs/switches/datacenter/mds9000/sw/5\\_2/upgrade/guides/nx-os/upgrade.html](https://www.cisco.com/c/en/us/td/docs/switches/datacenter/mds9000/sw/5_2/upgrade/guides/nx-os/upgrade.html)

**NEW QUESTION 181**

A network engineer must download a firmware image from a remote location to a Cisco UCS Fabric Interconnect. The software bundle is over 232 MB in size. The file transfer must use encryption and authentication. Which protocol must be used to accomplish this goal?

- A. RDP
- B. HTTPS
- C. SCP
- D. TFTP

Answer: C

#### NEW QUESTION 186

An engineer must configure Cisco UCS Manager to accept only HTTPS connections that use TLS 1.2. The cipher security level must be high and the length of the keying key value must be 2048 bits. Drag and drop the code snippets from the right onto the blanks in the code on the left to accomplish these goals. Not all commands are used.

```
scope security
  create keyring ciscokring
  set modulus
  commit-buffer

scope system
  scope services
    enable https
    set https port 8443
    set https
    set https cipher-suite-mode
    set https ssl-protocol
```

keyring ciscokring

high-strength

1024 bits

mod2048

tls1-2

secure

- A. Mastered
- B. Not Mastered

**Answer:** A

#### Explanation:

Graphical user interface, application Description automatically generated

#### NEW QUESTION 188

A Cisco Nexus 7000 Series switch runs VXLAN, and interface Ethernet 7/30 is configured as a trunk port. Which command set configures the switch to act as a gateway for VLAN 50?

```
interface Ethernet7/30 no switchport
no shutdown
service instance 1 vni no shutdown
```

- A. encapsulation profile VSI\_50\_TO\_500 default
- B. encapsulation profile vni VSI\_50\_TO\_500 dot1q 500 vni 50 bridge-domain 500 member vni 50 interface Vlan500 ip address 10.50.50.51/24
- C. encapsulation profile vni VSI\_50\_TO\_500 dot1q 500 vni 50 bridge-domain 500 member vni 50 interface Bdi500 ip address 10.50.50.51/24
- D. encapsulation profile vni VSI\_50\_TO\_500 dot1q 50 vni 500 bridge-domain 50 member vni 500 interface Bdi50 ip address 10.50.50.51/24
- E. encapsulation profile vni VSI\_50\_TO\_500 dot1q 50 vni 500 bridge-domain 50 member vni 500 interface Vlan50 ip address 10.50.50.51/24

**Answer:** C

#### NEW QUESTION 193

An engineer implements an ACI fabric and must implement microsegmentation of endpoints within the same IP subnet using a network-based attribute. The attribute mapping must allow IP subnet independence. Which attribute must be selected?

- A. MAC address
- B. Custom
- C. Tag
- D. IP

**Answer:** D

#### Explanation:

If you want to use a network-based attribute and classify IP addresses in the same subnet, you must use the MAC-based network attribute. IP-based microsegmented EPGs do not support classification for IP addresses in the same subnet.

[https://www.cisco.com/c/en/us/td/docs/switches/datacenter/aci/apic/sw/3-x/virtualization/b\\_ACI\\_Virtualization\\_](https://www.cisco.com/c/en/us/td/docs/switches/datacenter/aci/apic/sw/3-x/virtualization/b_ACI_Virtualization_)

#### NEW QUESTION 195

An engineer must use the Embedded Event Manager to monitor events that occur on a Cisco Nexus 9000 series switch. An environment variable needs to be created so that several policies use the monitored events in their actions. The external email server is represented by IP address 10.10.10.10. Which command sets the environment variable?

- A. N9k2(config)# event manager policy environment mailserver "10.10.10.10"
- B. N9k2# event manager environment mailserver "10.10.10.10"
- C. N9k2 (config-apple1)# environment mailserver "10.10.10.10"
- D. N9k2 (config)# event manager environment mailserver "10.10.10.10"

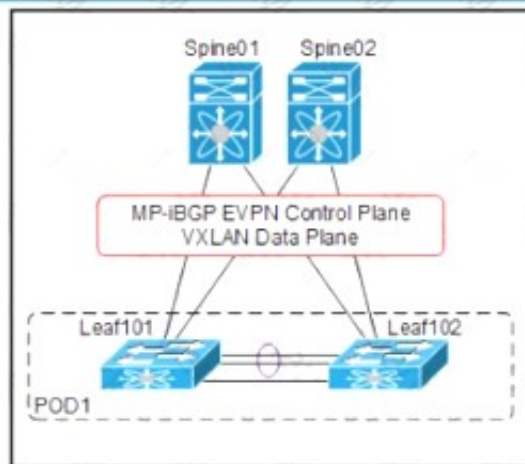
**Answer:** D

#### Explanation:

To set an Embedded Event Manager (EEM) environment variable, use the event manager environment command in global configuration mode. To disable an EEM environment variable, use the no form of this command. <https://www.cisco.com/c/en/us/td/docs/ios-xml/ios/eem/command/eem-cr-book/eem-cr-e1.html>

#### NEW QUESTION 198

Refer to the exhibit.



```
SPINE-01#show run pim
ip pim rp-address 10.255.0.100 group-list 225.0.0.0/8
ip pim bsr rp-candidate loopback1 group-list 225.0.0.0/8
ip pim ssm range 232.0.0.0/8
ip pim anycast-rp 10.255.0.100 10.10.0.1
ip pim anycast-rp 10.255.0.100 10.10.0.2
!
!
SPINE-01#show run interface loopback1
interface loopback1
ip router ospf 1 area 0.0.0.0
ip pim sparse-mode
```

An engineer must implement VXLAN with anycast gateway. To accomplish this, an engineer must set up PIM Source-Specific Multicast for host reachability. Which IP address must be applied to interface loopback1 to accomplish this goal?

- A. 255.0.0.1/8
- B. 255.0.100
- C. 10.10.0.1/32
- D. 10.10.0.2/32

**Answer: B**

#### NEW QUESTION 199

What is the benefit of adding Cisco HyperFlex Hardware Acceleration Cards to a HyperFlex deployment?

- A. offline encryption acceleration
- B. increased network throughput
- C. GPU acceleration
- D. Increased compression efficiency

**Answer: D**

#### Explanation:

- [Additional Information on HyperFlex Hardware Acceleration Cards](#)

### Overview of HyperFlex Hardware Acceleration Cards

This chapter provides details for installation, post-installation, and troubleshooting of HyperFlex Hardware Acceleration Cards (PID: HX-PCIE-OFFLOAD-1) on HyperFlex nodes and for configuring your initial cluster. **These cards provide improved performance and compression efficiency for most storage workloads.**



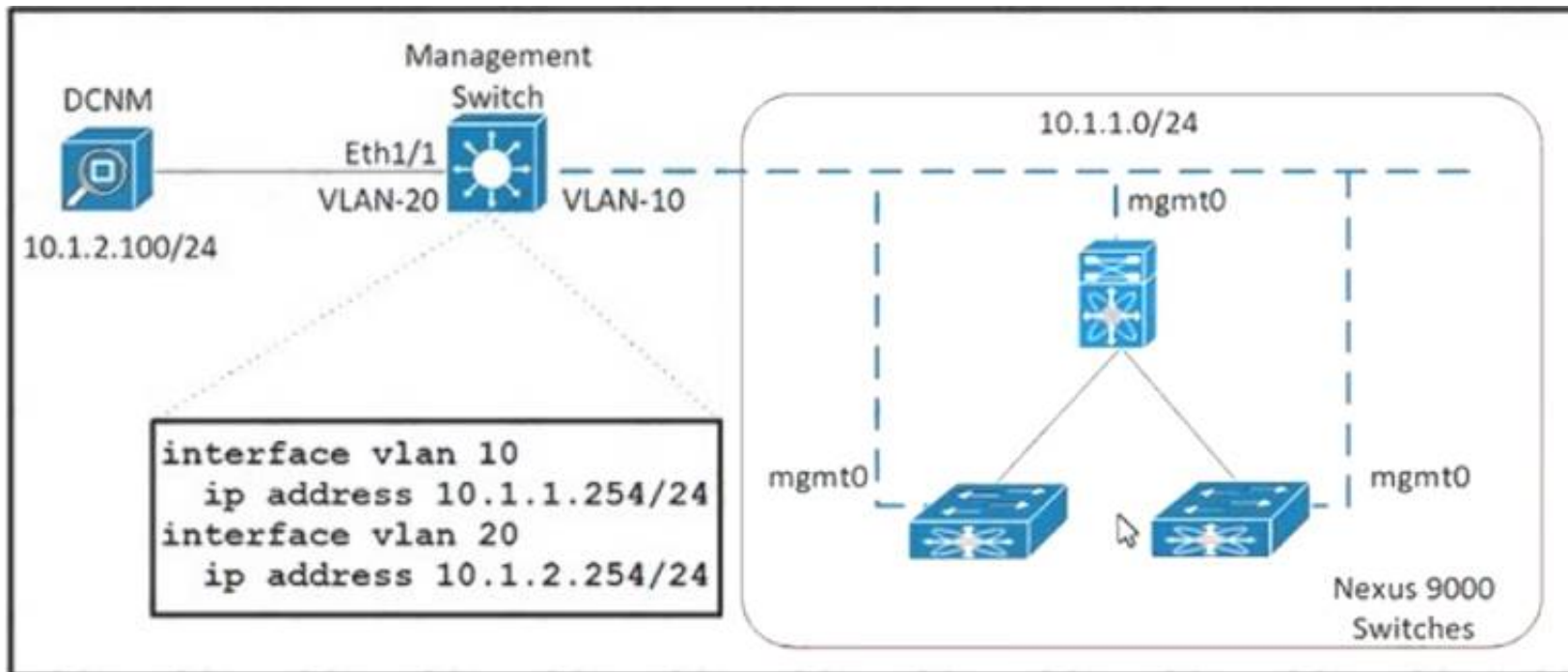
**Note**

An HXDP-P Enterprise license is required for installing and configuring HyperFlex Hardware Acceleration Cards.

[https://www.cisco.com/c/en/us/td/docs/hyperconverged\\_systems/HyperFlex\\_HX\\_DataPlatformSoftware/Installation\\_VMware\\_ESXi/3\\_5/b\\_HyperFlexSystems\\_Installation\\_Guide\\_for\\_VMware\\_ESXi\\_3\\_5/b\\_HyperFlexSystems\\_Installation\\_Guide\\_for\\_VMware\\_ESXi\\_3\\_5\\_chapter\\_01100.html#:~:text=Overview%20of%20HyperFlex%20Hardware%20Acceleration%20Cards,-This%20chapter%20provides&text=These%20cards%20provide%20improved%20performance%20and%20compression%20efficiency%20for%20most%20storage%20workloads.](https://www.cisco.com/c/en/us/td/docs/hyperconverged_systems/HyperFlex_HX_DataPlatformSoftware/Installation_VMware_ESXi/3_5/b_HyperFlexSystems_Installation_Guide_for_VMware_ESXi_3_5/b_HyperFlexSystems_Installation_Guide_for_VMware_ESXi_3_5_chapter_01100.html#:~:text=Overview%20of%20HyperFlex%20Hardware%20Acceleration%20Cards,-This%20chapter%20provides&text=These%20cards%20provide%20improved%20performance%20and%20compression%20efficiency%20for%20most%20storage%20workloads.)

#### NEW QUESTION 201

Refer to the exhibit.



An engineer must deploy 70 Cisco Nexus 9000 Series Switches in a new environment. The requirement is to use Cisco DCNM as a management tool to deploy, manage and monitor the new switches. In addition, DCNM is configured with a zero-touch POAP feature to facilitate fabric creation. Which action meets these requirements?

- A. Configure SNMP on the new Nexus switches to send SNMP messages to the DCNM server
- B. Create a SPAN session on the management switch to send the traffic from VLAN 10 to Ethernet 1/1.
- C. Configure an IP helper address on interface VLAN 10 of the management switch
- D. Create common credentials on all of the new Nexus switches

**Answer: C**

#### NEW QUESTION 202

An engineer is configuring HTTPS access to Cisco UCS Manager. The engineer created a keyring and created the certificate request for the keyring. Cisco UCS Manager continues to receive untrusted messages from a Firefox browser and a Chrome browser. Which action must be taken as the next step in the HTTPS access configuration?

- A. Create a trusted point
- B. Sign the certificate using the Cisco UCS Manager.
- C. Obtain a validated certificate from Cisco
- D. Install a trusted certificate in the browser store

**Answer: A**

#### NEW QUESTION 205

Drag and drop the characteristics from the left onto the NAS protocols on the right. Some characteristics are used more than once.

- used to boot VHDX files
- used to boot VMDK files
- uses lease-based model for file locking
- used to provide shared storage for hypervisors

NFS

SMB/CIFS

- A. Mastered
- B. Not Mastered

**Answer: A**

#### Explanation:

Diagram Description automatically generated

NFS:

- Used to boot VMDK files
  - Uses lease-based model for file locking
  - Used to provide shared storage for hypervisors
- SMB/CIFS:
- Used to boot VHDX files
  - Used to provide shared storage for hypervisors

#### NEW QUESTION 208



An engineer is implementing OTV on a transport that supports multicast. The solution needs to meet the following requirements:

- Establish adjacency to the remote peer by using multicast.
- Enable OTV advertisements for VLAN 100 to the other site.

Which two commands should be configured to meet these requirements? (Choose two.)

- A. otv site-vlan 100
- B. otv data-group 232.2.2.0/28
- C. otv use-adjacency-server 172.27.255.94
- D. otv extend-vlan 100
- E. otv control-group 232.1.1.1

**Answer:** DE

**Explanation:**

[https://www.cisco.com/c/dam/en/us/products/collateral/switches/nexus-7000-series-switches/guide\\_c07-728315](https://www.cisco.com/c/dam/en/us/products/collateral/switches/nexus-7000-series-switches/guide_c07-728315)

[https://www.cisco.com/c/en/us/td/docs/switches/datacenter/sw/nx-os/OTV/config\\_guide/b\\_Cisco\\_Nexus\\_7000\\_](https://www.cisco.com/c/en/us/td/docs/switches/datacenter/sw/nx-os/OTV/config_guide/b_Cisco_Nexus_7000_)

#### NEW QUESTION 212

An administrator is implementing DCNM so that events are triggered when monitored traffic exceeds the configured present utilization threshold. The requirement is to configure a maximum limit of 39860437 bytes that applies directly to the statistics collected as a ratio of the total link capacity. Which DCNM performance monitoring configuration parameter must be implemented to achieve this result?

- A. Absolution Values
- B. Baseline
- C. Util%
- D. Per port Monitoring

**Answer:** A

#### NEW QUESTION 215

A company plans to deploy a Cisco HyperFlex solution for data-intensive applications and databases. The proposed solution should offer the highest performance with high consistency and low latency. Which Cisco HyperFlex storage configuration should be used?

- A. All-HDD
- B. All-NVMe
- C. All-Flash
- D. Hybrid

**Answer:** B

#### NEW QUESTION 218

An engineer configures a storage environment for a customer with high-security standards. The secure environment is configured in vsan 50. The customer wants to maintain a configuration and active databases and prevent unauthorized switches from joining the fabric. Additionally, the switches must prevent rogue devices from connecting to their ports by automatically learning the WWPNs of the ports connected to them for the first time. Which two configuration sets must be used to meet these requirements? (Choose two.)

☒ port-security enable  
port-security activate vsan 50

☒ clear fabric-binding activate vsan 50  
fabric-binding activate vsan 50

☒ fabric-binding activate vsan 50 force

☐ fcsp enable  
fcsp auto-active

☐ fcsp dhchap hash md5 sha1

- A. Option A
- B. Option B
- C. Option C
- D. Option D
- E. Option E

**Answer:** AC

#### NEW QUESTION 219

An engineer must configure HTTPS secure management for Cisco UCS Manager using a key ring named kr2016 and a key size of 1024 bits. The environment consists of a primary fabric interconnect named UCS-A and a secondary fabric interconnect named UCS-B. Which command sequence must be used to accomplish this goal?

- ☐ UCS-B# scope security  
 UCS-B /security # keyring kr2016  
 UCS-B /security/keyring\* # set mod mod1024  
 UCS-A /security/keyring\* # commit-buffer
- ☐ UCS-A# scope security  
 UCS-A /security # create keyring kr2016  
 UCS-A /security/keyring\* # set modulus mod1024  
 UCS-A /security/keyring\* # commit-buffer
- ☐ UCS-B# scope security  
 UCS-B /security # create keyring kr2016  
 UCS-B /security/keyring\* # set size mod1024  
 UCS-A /security/keyring\* # commit-buffer
- ☐ UCS-A# scope security  
 UCS-A /security # keyring name kr2016  
 UCS-A /security/keyring\* # set size 1024  
 UCS-A /security/keyring\* # commit-buffer

- A. Option A
- B. Option B
- C. Option C
- D. Option D

**Answer: B**

**Explanation:**

[https://www.cisco.com/en/US/docs/unified\\_computing/ucs/sw/cli/config/guide/1.4.1/CLI\\_Config\\_Guide\\_1\\_4\\_1](https://www.cisco.com/en/US/docs/unified_computing/ucs/sw/cli/config/guide/1.4.1/CLI_Config_Guide_1_4_1)

```
UCS-A# scope security
UCS-A /security # create keyring kr220
UCS-A /security/keyring* # set modulus mod1024
UCS-A /security/keyring* # commit-buffer
UCS-A /security/keyring #
```

#### NEW QUESTION 223

Refer to the exhibit.

```
MDSSWITCH# config terminal
MDSSWITCH(config)# fcip profile 1
MDSSWITCH(config-profile)# ip address 192.0.1.10
MDSSWITCH(config-profile)# port 5000
MDSSWITCH(config-profile)# tcp max-bandwidth-mbps 5000
MDSSWITCH(config-profile)# min-available-bandwidth-mbps 4000 round-trip-time-ms 1
MDSSWITCH(config-profile)# exit
MDSSWITCH(config)# interface fcip 1
MDSSWITCH(config-if)# use-profile 1
MDSSWITCH(config-if)# peer-info ipaddr 192.0.1.11
MDSSWITCH(config-if)# tcp-connections 1
MDSSWITCH(config-if)# ip-compression mode2
MDSSWITCH(config-if)# no shutdown
MDSSWITCH(config-if)# exit
MDSSWITCH(config)# interface ipStorage 1/1
MDSSWITCH(config-if)# ip address 192.0.1.10 255.255.255.0
MDSSWITCH(config-if)# switchport mtu 2500
MDSSWITCH(config-if)# no shutdown
MDSSWITCH(config-if)# end
```

An engineer configures FCIP on a Cisco MDS 9000 Series switch. What is the result of implementing the configuration?

- A. The switch attempts to make two TCP connections
- B. Compression is performed by using hardware
- C. Mode2 is enabled by default.
- D. Compression is performed by using software.

**Answer: B**

**Explanation:**

[https://www.cisco.com/c/en/us/td/docs/switches/datacenter/mds9000/sw/8\\_x/config/ip\\_services/ipsvc/cfcip.html](https://www.cisco.com/c/en/us/td/docs/switches/datacenter/mds9000/sw/8_x/config/ip_services/ipsvc/cfcip.html)

#### NEW QUESTION 224

A SAN administrator must Implement Infrastructure monitoring for the Fibre Channel storage environment. The storage environment consists of a standalone Cisco Nexus 9000 Series Switch and Cisco MDS 9000 Series Switches. The goal is to be able to visualize the SAN support VXLAN overlays and identify storage slow drain issues. Which monitoring solution accomplishes this task?

- A. Cisco Prime Infrastructure
- B. Cisco DCNM
- C. Cisco APIC
- D. Cisco Intersight

**Answer:** B

#### NEW QUESTION 225

An engineer must perform a POAP deployment of a Cisco Nexus 9000 Series Switch. The switch must automatically receive its software image and configuration file upon power-on. Also, only UDP is permitted between the Nexus 9000 switch and the server that hosts the Cisco NX-OS system images. Which set of actions completes the configuration?

- A. Enable option 67. Define TFTP transfer protocol.
- B. Enable option 43. Define HTTP transfer protocol.
- C. Enable option 46. Define TFTP transfer protocol.
- D. Enable option 35. Define HTTP transfer protocol.

**Answer:** A

#### NEW QUESTION 229

A network engineer must configure a power redundancy policy on a Cisco UCS C-Series Rack Server. The power redundancy must support two power sources being used to power the server. Which configuration should be applied to meet the requirement?

- Ⓐ 

```
server# scope org /
server /org # scope psu-policy
server /org/psu-policy # set redundancy N+1
server /org/psu-policy* # commit-buffer
```
- Ⓑ 

```
server# scope org /
server /org # scope psu-policy
server /org/psu-policy # set psu-redundancy-policy grid
server /org/psu-redundancy-policy* # commit-buffer
```
- Ⓒ 

```
server# scope org /
server /org # scope psu-policy
server /org/psu-policy # set psu-redundancy-policy N+1
server /org/psu-redundancy-policy* # commit-buffer
```
- Ⓓ 

```
server# scope org /
server /org # scope psu-policy
server /org/psu-policy # set redundancy grid
server /org/psu-policy* # commit-buffer
```

- A. Option A
- B. Option B
- C. Option C
- D. Option D

**Answer:** D

#### Explanation:

[https://www.cisco.com/c/en/us/td/docs/unified\\_computing/ucs/ucs-manager/CLI-User-Guides/Server-Mgmt/3-1](https://www.cisco.com/c/en/us/td/docs/unified_computing/ucs/ucs-manager/CLI-User-Guides/Server-Mgmt/3-1) The command "N+1" is invalid. The command should be "n-plus-1".

	Command or Action	Purpose
Step 1	UCS-A# <code>scope org org-name</code>	Enters organization mode for the specified organization. To enter the root organization mode, type <code>/</code> as the <code>org-name</code> .
Step 2	UCS-A /org # <code>scope psu-policy</code>	Enters PSU policy mode.
Step 3	UCS-A /org/psu-policy # <code>set redundancy (grid   n-plus-1   non-redund)</code>	Specifies one of the following redundancy types: <ul style="list-style-type: none"> <li>• <b>grid</b> – Two power sources are turned on, or the chassis requires greater than N+1 redundancy. If one source fails (which causes a loss of power to one or two PSUs), the surviving PSUs on the other power circuit continue to provide power to the chassis.</li> <li>• <b>n-plus-1</b> – The total number of PSUs to satisfy non-redundancy, plus one additional PSU for redundancy, are turned on and equally share the power load for the chassis. If any additional PSUs are installed, Cisco UCS Manager sets them to a "turned-off" state.</li> <li>• <b>non-redund</b> – All installed power supplies (PSUs) are turned on and the load is evenly balanced. Only smaller configurations (requiring less than 2500W) can be powered by a single PSU.</li> </ul> For more information about power redundancy, see the <i>Cisco UCS 5108 Server Chassis Installation Guide</i> .
Step 4	UCS-A /org/psu-policy # <code>commit-buffer</code>	Commits the transaction to the system configuration.



### NEW QUESTION 234

An engineer must configure a control plane policy on a Cisco Nexus 9000 Series Switch that is located at IP 192.168.20.1 that moots those requirements

- Only HTTP, RDP, and ICMP traffic is permitted from subnet 192.168.10.0/24.
- The committed information rate must be 54000 pps.
- The burst size must be 128 packets.
- Any other traffic must be dropped.

Drag and drop the code snippets from the bottom onto the blanks in the code on the top to complete the configuration. Not all code snippets are used

```
ip access-list permithosts
  permit tcp 192.168.10.0/24 
  permit tcp 192.168.10.0/24 host 192.168.20.1 eq 3389
  permit icmp 192.168.10.0/24 host 192.168.20.1

class-map type control-plane match-any hostscmap
  match 
policy-map type control-plane hostscmap
  police cir 54000 pps bc 128 packets
```

host 192.168.20.1 eq 443      class hostscmap  
 conform transmit violate drop      access-group name permithosts  
 class permithosts      conform transmit violate drop

- A. Mastered  
 B. Not Mastered

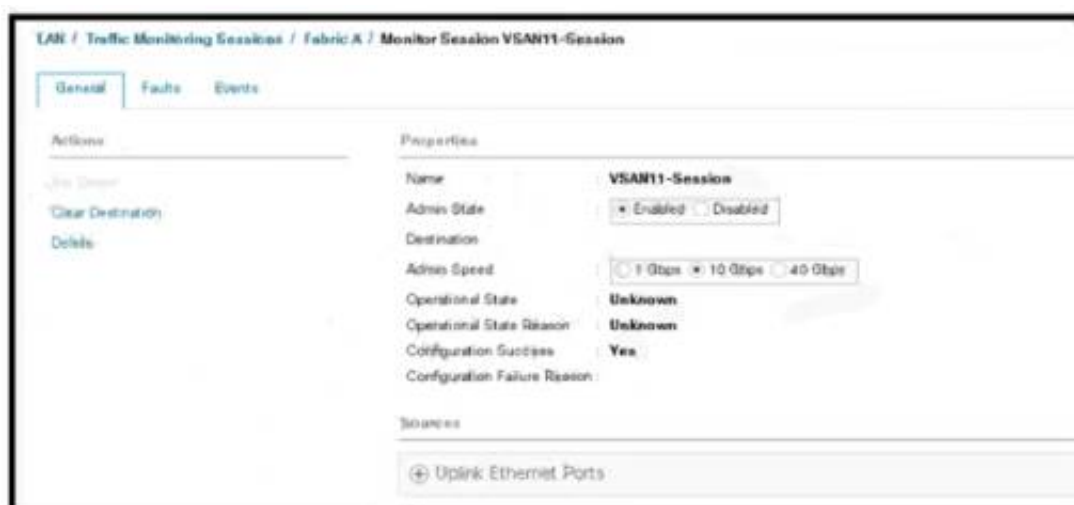
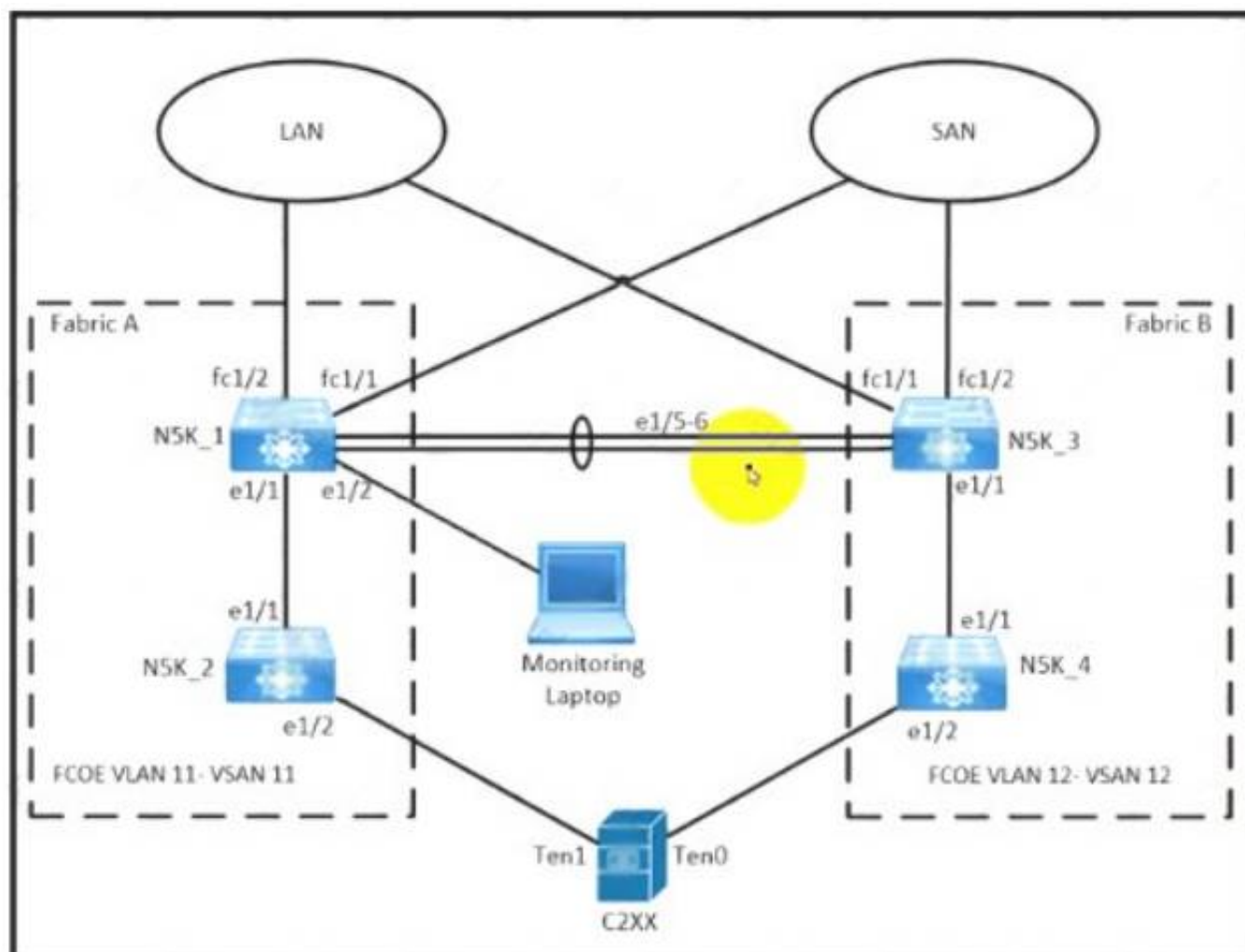
**Answer:** A

#### Explanation:

Text Description automatically generated

### NEW QUESTION 235

Refer to the exhibit.



An engineer is creating a SPAN session to send a copy of all the Fabric-A VSAN 11 traffic on NSK\_1 to the monitoring laptop. The configurator that is presented



has already been applied to Cisco UCS Manager. Which action completes the configuration?

- A. Activate a NetFlow monitoring session
- B. Create a SAN traffic monitoring session
- C. Set VLAN 11 as the traffic destination
- D. Select VSAN 11 as the source of traffic.

**Answer: C**

#### NEW QUESTION 239

An engineer must configure an LACP port channel on two Cisco Nexus 7000 Series Switches. The interface e1/2 must be a hot-standby link that initiates negotiation with other ports. Drag and drop the commands from the right onto the blanks in the configuration on the left. Not all commands are used.

```

configure terminal
feature 
interface Ethernet 1/2
switchport
channel-group 2
interface Ethernet 1/3
switchport
channel-group 2 mode active
lacp port
        
```

mode active

lacp

priority 1

mode passive

priority 65534

mode on

- A. Mastered
- B. Not Mastered

**Answer: A**

**Explanation:**

```

configure terminal
feature lacp
interface Ethernet 1/2
switchport
channel-group 2 mode active
interface Ethernet 1/3
switchport
channel-group 2 mode active
lacp port priority 1
        
```

mode active

lacp

priority 1

mode passive

priority 65534

mode on

#### NEW QUESTION 241

Which NFS version uses the TCP protocol and needs only one IP port to run the service?

- A. NFSv1
- B. NFSv2
- C. NFSv3
- D. NFSv4

**Answer: D**

#### NEW QUESTION 243

A network engineer is adding a Cisco HyperFlex data platform to the Cisco Intersight management portal. Which two components are required for Intersight to claim the Cisco HyperFlex data platform? (Choose two.)

- A. device FQDN
- B. device public IP address
- C. device claim code
- D. device ID
- E. device serial number


**Answer: CD**

**Explanation:**

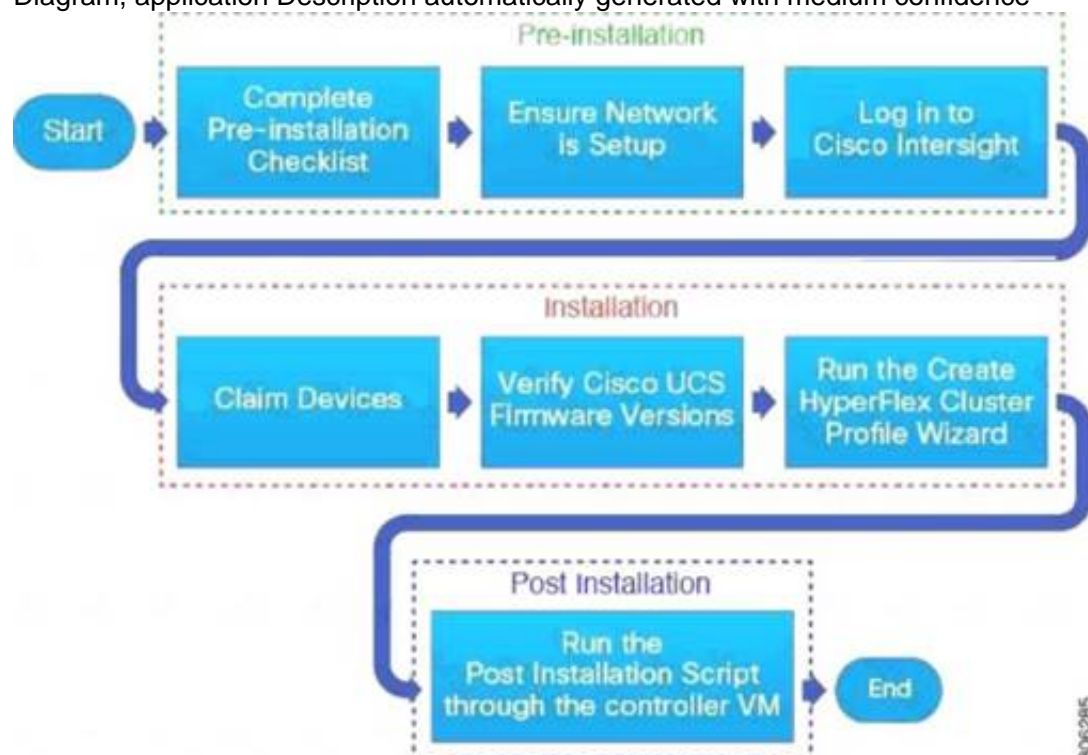
Text Description automatically generated

- Step 1** In the Cisco Intersight, left navigation pane, select **ADMIN > Targets**.
- Step 2** In the **Targets** details page, click **Claim a New Target**.
- Step 3** In the **Claim a New Target** wizard, select **Hyperconverged > Cisco HyperFlex Cluster** and complete the following fields:

- Note** You can locate the **Device ID** and the **Claim Code** information in:
- Cisco UCS Manager and Cisco IMC by navigating to **Admin > Device Connector**.
  - Cisco HyperFlex by navigating to **HyperFlex Connect UI > Settings > Device Connector**.
  - Cisco UCS Director by navigating to **Administration > Device Connector**.

UI Element	Essential Information
<b>Device ID</b>	<p>Enter the applicable Device ID.</p> <ul style="list-style-type: none"> <li>For a UCS Domain, use the serial number of the primary and subordinate FIs, in this format: (Serial number of FI-A &amp; Serial number of FI-B). Example: [SAL1924GKV6&amp;SAL1913CJ7V]</li> <li>For a standalone server, use serial number. Example: NGTR12345</li> <li>For HyperFlex, use Cluster UUID. Example: xxxxxxxx-xxxx-xxxx-xxxx-</li> </ul>

Diagram, application Description automatically generated with medium confidence



[https://www.cisco.com/c/en/us/td/docs/hyperconverged\\_systems/HyperFlex\\_HX\\_DataPlatformSoftware/HyperFlex\\_Installation\\_Guide\\_for\\_Intersight/b\\_HyperFlex\\_Installation\\_Guide\\_for\\_Intersight/b\\_HyperFlex\\_Installation\\_Guide\\_for\\_Intersight\\_chapter\\_011.html](https://www.cisco.com/c/en/us/td/docs/hyperconverged_systems/HyperFlex_HX_DataPlatformSoftware/HyperFlex_Installation_Guide_for_Intersight/b_HyperFlex_Installation_Guide_for_Intersight/b_HyperFlex_Installation_Guide_for_Intersight_chapter_011.html)  
<https://www.cisco.com/c/en/us/support/docs/hyperconverged-infrastructure/hyperflex-hx-dataplatform/214268-cisco-intersight-hyperflex-installatio.html>

#### NEW QUESTION 248

An engineer must apply AAA configuration on a Cisco MDS 9000 Series Switch. The solution must meet these conditions:

- It must use a challenge-response authentication protocol that uses MD5 hashing with an incrementally changing identifier
- The RADIUS configuration must be automatically shared with other MDS switches in the environment.

The RADIUS server is already defined. Which command set completes the configuration?

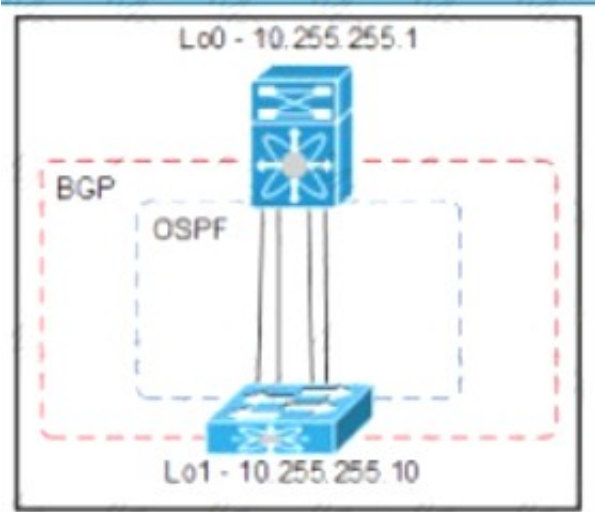
- ☐ aaa authentication login pap enable  
 distribute radius  
 radius-server host 10.8.8.0 auth-port 1821
- ☐ aaa authentication login mschapv2 enable  
 radius propagate  
 radius authentication port 1821
- ☐ aaa authentication login chap enable  
 radius distribute  
 radius commit
- ☐ aaa authentication login mschap enable  
 radius commit  
 radius-server host 10.8.8.0

- A. Option A
- B. Option B
- C. Option C
- D. Option D

Answer: C

NEW QUESTION 251

Refer to the exhibit



An engineer must provision a VXLAN deployment. The OSPF has already been configured as the underlay protocol. All BGP configurations will be performed using the template method. The deployment must meet these requirements:

- > The local update source for leaf switches must be loopback 1
- > The router ID must be the local loopback IP address
- > The external BGP connections must use a template name

Drag and drop the configuration snippets from the bottom to complete the configuration.

```
router bgp 65000
  router-id 
  template peer SPINE
  bfd
  remote-as 
  update-source loopback1
  timers 3 9
  address-family  peer 
    send-community extended
  neighbor 
    peer SPINE
```

10.255.255.1

inherit

65000

10.255.255.10

12vpn

evpn

- A. Mastered
- B. Not Mastered

Answer: A

Explanation:



```

router bgp 65000
  router-id 10.255.255.10
  template peer SPINE
  bfd
  remote-as 65000
  update-source loopback1
  timers 3 9
  address-family 12vpn evpn
    send-community extended
  neighbor 10.255.255.1
    inherit peer SPINE

```

10.255.255.1   inherit   65000

10.255.255.10   12vpn   evpn

#### NEW QUESTION 254

Refer to the exhibit.

```

interface Ethernet1/1
  description Server1
interface Ethernet1/2
  description Server2
interface Ethernet1/3
  description Server3
interface Ethernet1/4
  description Server4
interface Ethernet1/5
  description Server5

```

Which command is run from the Guest Shell to set the description on the first five interfaces of the Cisco Nexus switch?

- ☐ [guestshell@guestshell ~]\$ for x in (1..5); do dohost "conf t" ; "interface eth1/\$x" ; "description Server\$x" ; done
- ☐ [guestshell@guestshell ~]\$ for x in (1..5); dohost "conf t ; interface eth1/\$x ; description Server\$x" ;
- ☐ [guestshell@guestshell ~]\$ for x in (1..5); dohost "conf t ; interface eth1/\$x ; description Server\$x" ;
- ☐ [guestshell@guestshell ~]\$ for x in (1..5); do dohost "conf t ; interface eth1/\$x ; description Server\$x" ; done

- A. Option A
- B. Option B
- C. Option C
- D. Option D

**Answer: D**

#### Explanation:

NXs1# guestshell

[admin@guestshell ~]\$ for x in {1..5}; do dohost "conf t ; interface eth1/\$x ; description Server\$x" ; done Enter configuration commands, one per line. End with CNTL/Z.

Enter configuration commands, one per line. End with CNTL/Z. Enter configuration commands, one per line. End with CNTL/Z. Enter configuration commands, one per line. End with CNTL/Z. Enter configuration commands, one per line. End with CNTL/Z. [admin@guestshell ~]\$

#### NEW QUESTION 256

Which two components should be checked when a Cisco Nexus 9000 Series Switch fails to boot using POAP? (Choose two.)

- A. image noted in the script file against switch bootflash
- B. DHCP server to bootstrap IP information
- C. script signed with security key
- D. TFTP server that contains the configuration script
- E. POAP feature license



Answer: BD

**Explanation:**

[https://www.cisco.com/c/en/us/td/docs/switches/datacenter/nexus9000/sw/7-x/troubleshooting/guide/b\\_Cisco\\_Nexus\\_9000\\_Series\\_NX-OS\\_Troubleshooting\\_Guide\\_7x/b\\_Cisco\\_Nexus\\_9000\\_Series\\_NXOS\\_Troubleshooting\\_Guide\\_7x\\_chapter\\_01100.html](https://www.cisco.com/c/en/us/td/docs/switches/datacenter/nexus9000/sw/7-x/troubleshooting/guide/b_Cisco_Nexus_9000_Series_NX-OS_Troubleshooting_Guide_7x/b_Cisco_Nexus_9000_Series_NXOS_Troubleshooting_Guide_7x_chapter_01100.html)  
[https://www.cisco.com/c/en/us/td/docs/switches/datacenter/nexus9000/sw/7-x/fundamentals/configuration/guide/b\\_Cisco\\_Nexus\\_9000\\_Series\\_NX-OS\\_Fundamentals\\_Configuration\\_Guide\\_7x/b\\_Cisco\\_Nexus\\_9000\\_Series\\_NX-OS\\_Fundamentals\\_Configuration\\_Guide\\_7x\\_chapter\\_01100.html](https://www.cisco.com/c/en/us/td/docs/switches/datacenter/nexus9000/sw/7-x/fundamentals/configuration/guide/b_Cisco_Nexus_9000_Series_NX-OS_Fundamentals_Configuration_Guide_7x/b_Cisco_Nexus_9000_Series_NX-OS_Fundamentals_Configuration_Guide_7x_chapter_01100.html)

**NEW QUESTION 258**

Refer to the exhibit.

N7K-1

```
interface Vlan165
  no shutdown
  no ip redirects
  ip address 10.16.165.2/27
  no ipv6 redirects
  hsrp version 2
  hsrp 165
    preempt
    priority 150
    ip 10.16.165.1

vpc domain 100
  role priority 100
  peer-keepalive destination 10.1.1.2 source 10.1.1.1
vrf default
  delay restore 60
  peer-gateway
  auto-recovery
  ip arp synchronize
```

N7K-2

```
interface Vlan165
  no shutdown
  no ip redirects
  ip address 10.16.165.3/27
  no ipv6 redirects
  hsrp version 2
  hsrp 165
    priority 50
    ip 10.16.165.1

vpc domain 100
  role priority 200
  peer-keepalive destination 10.1.1.1 source 10.1.1.2
vrf default
  delay restore 60
  peer-gateway
  auto-recovery
  ip arp synchronize
```

Which statement describes the default gateway configuration of the vPC?

- A. N7K-1 acts as the default gateway for all traffic.
- B. N7K-2 forwards traffic that is destined for the default gateway by using the peer link.
- C. N7K-2 acts as the default gateway for all traffic.
- D. Either switch can act as the active default gateway.

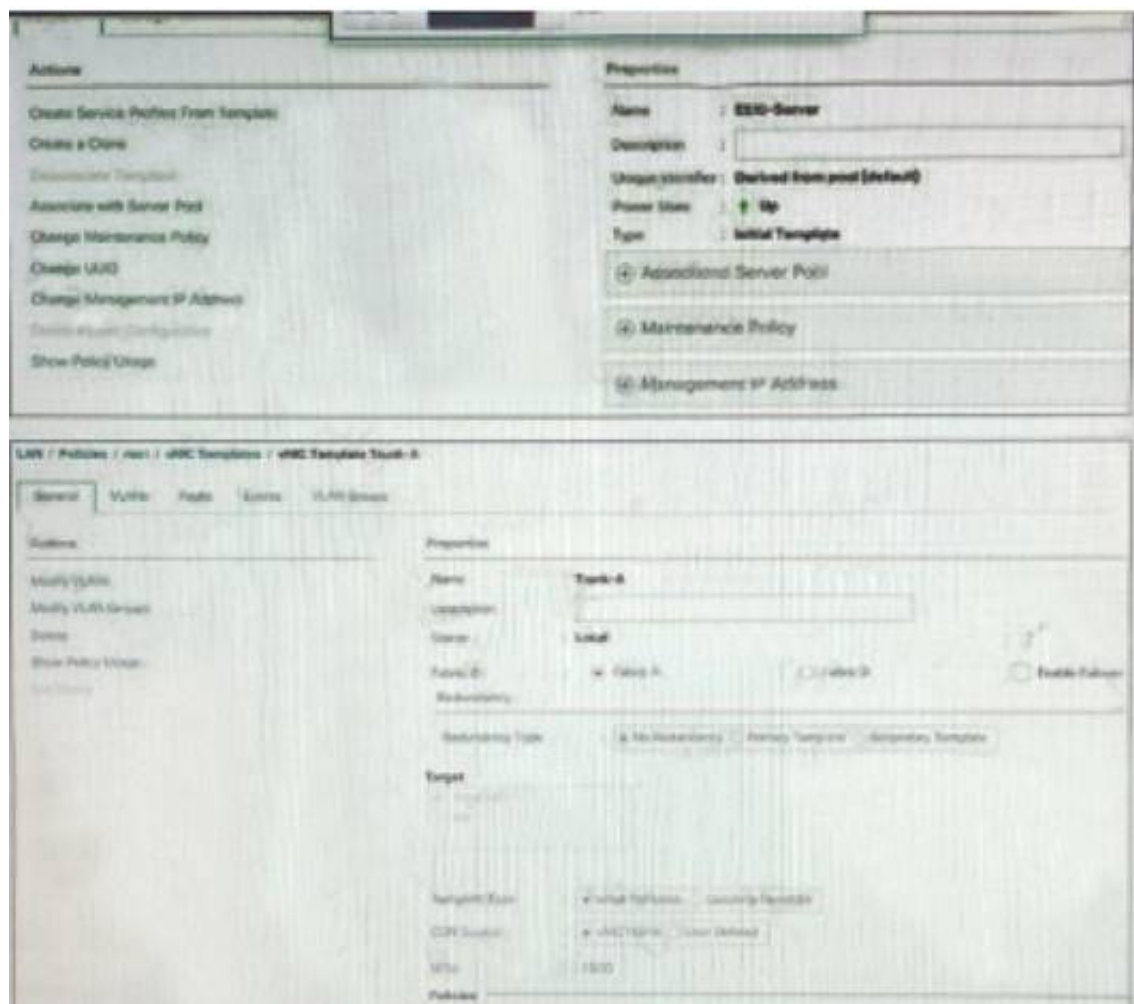
Answer: D

**Explanation:**

<https://community.cisco.com/t5/networking-documents/peer-gateway-feature-on-the-nexus-7000/ta-p/3113290>

**NEW QUESTION 262**

Refer to the exhibit.



Esxi-server is associated to the blade server. A VLAN added to trunk-a. the VLAN is missing on the vNIC of ESXI-server. Which action should be taken to add the VLAN to the cNIC?

- A. Change the template type of ESXI-Server to an updating template.
- B. Change the template type of Trunk-A to an updating template.
- C. Remove both template and recreate them as updating templates.
- D. Remove the VLAN from the Trunk-A template and add the VLAN again.

**Answer: D**

#### NEW QUESTION 264

Which component is excluded by default from the host firmware package?

- A. network interface controller
- B. board controller
- C. storage controller
- D. local disk

**Answer: D**

#### NEW QUESTION 267

An engineer must configure OSPFv2 connectivity between a pair of Cisco Nexus switches. The connection between the switches must meet these requirements:

- Use unicast for updates.
- Use decentralized communication of updates.
- Full adjacency between switches.

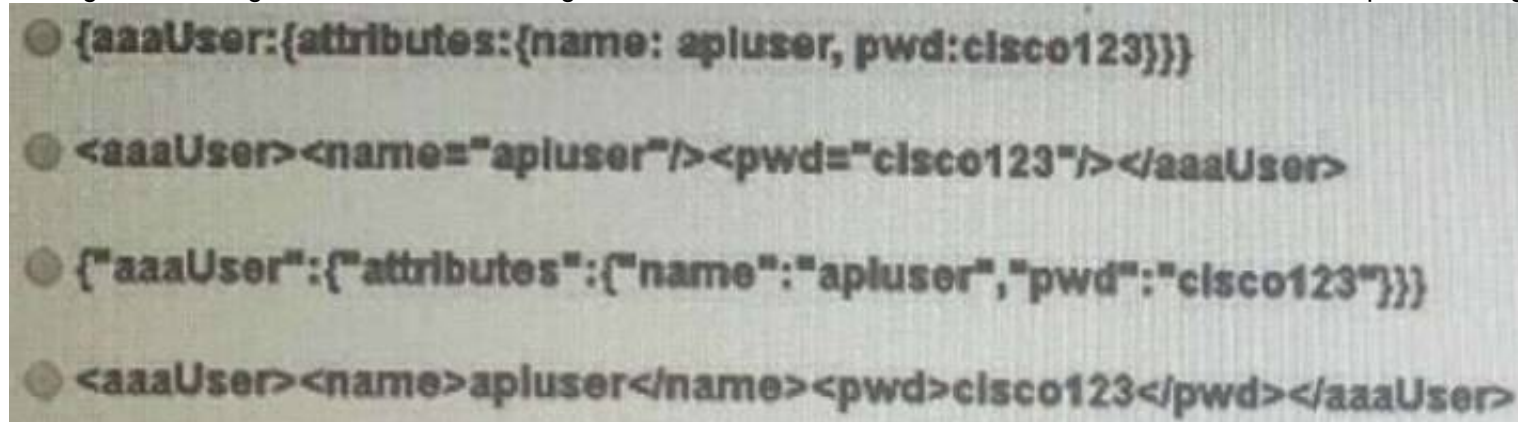
Which configuration is needed to meet these requirements?

- A. interface with a type of p2p network
- B. stub area between the neighbors
- C. filter list between the neighbors
- D. virtual link between the neighbors

**Answer: A**

#### NEW QUESTION 269

An engineer is using REST API calls to configure the cisco APIC. Which data structure must be used within a post message to receive a login token?



- A. Option A
- B. Option B
- C. Option C
- D. Option D

**Answer:** C

**Explanation:**

- **aaaListDomains** –Sent as a GET message, this method returns a list of valid AAA login domains. You can send this message without logging in.

You can call the authentication methods using this syntax, specifying either JSON or XML data structures:

```
{ http | https } :// host [:port] /api/ methodName . { json | xml }
```

This example shows a user login message that uses a JSON data structure:

```
POST https://apic-ip-address/api/aaaLogin.json
```

```
{  
  "aaaUser" : {  
    "attributes" : {  
      "name" : "georgewa",  
      "pwd" : "paSSword1"  
    }  
  }  
}
```

[https://www.cisco.com/c/en/us/td/docs/switches/datacenter/aci/apic/sw/2-x/rest\\_cfg/2\\_1\\_x/b\\_Cisco\\_APIC\\_REST\\_API\\_Configuration\\_Guide/b\\_Cisco\\_APIC\\_REST\\_API\\_Configuration\\_Guide\\_chapter\\_0](https://www.cisco.com/c/en/us/td/docs/switches/datacenter/aci/apic/sw/2-x/rest_cfg/2_1_x/b_Cisco_APIC_REST_API_Configuration_Guide/b_Cisco_APIC_REST_API_Configuration_Guide_chapter_0)

#### NEW QUESTION 271

An engineer configured an environment that contains the vPC and non-vPC switches. However, it was noticed that the downstream non-vPC switches do not receive the upstream vPC switch peers. Which vPC feature must be implement to ensure that vPC and non-vPC switches receive same STP bridge ID from the upstream vPC switch peers?

- A. vpc local role-priority 4000
- B. peer-switch
- C. system-mac 0123.4567.89ab
- D. peer-gateway

**Answer:** B

**Explanation:**

Peer-Switch feature allows the vPC peers use the same STP root ID as well as the same bridge ID.

#### NEW QUESTION 276

Which configuration implements static ingress replication?

- ☒ interface nve 1  
member vni 2100980  
ingress-replication protocol static  
peer-ip 10.0.0.4
- ☐ interface nve 1  
member vni 127772151  
ingress-replication protocol bgp
- ☐ interface nve 1  
member vni 3126980  
peer vtep 10.0.0.4  
ingress-replication protocol static  
peer-ip 10.0.0.4
- ☐ interface nve 1  
member vni 384233213  
peer vtep 10.0.0.4

- A. Option A
- B. Option B
- C. Option C
- D. Option D

**Answer:** A

**Explanation:**

"Configuring Static Ingress Replication" section here:

[https://www.cisco.com/c/en/us/td/docs/switches/datacenter/nexus9000/sw/7-x/vxlan/configuration/guide/b\\_Cisc](https://www.cisco.com/c/en/us/td/docs/switches/datacenter/nexus9000/sw/7-x/vxlan/configuration/guide/b_Cisc)

**NEW QUESTION 280**

A network administrator must perform a system upgrade on a Cisco MDS 9000 Series Switch. Due to the recent changes by the security team:

- The AAA server is unreachable.
- All TCP communication between the MDS 9000 Series Switch and AAA servers is disabled. Which actions must be used to perform the upgrade?

- A. Log in locally to the MDS 9000 Series Switch using a network-admin role and download the upgrade files from the remote TFTP server.
- B. Log in locally to the MDS 9000 Series Switch using a server-admin role and download the upgrade files from the remote FTP server.
- C. Log in to a server storing the upgrade files remotely using a server-admin role and download the files to the MDS 9000 Series Switch using SFTP.
- D. Log in to a server storing the upgrade files remotely using a network-admin role and download the files to the MDS 9000 Series Switch using HTTP.

**Answer: A**

**NEW QUESTION 283**

Which file service protocol allows the files to appear locally mapped to the client and provides view, store, and update capabilities on a remote Linux-based storage repository that also serves as a distributed file system standard for NAS?

- A. NFS
- B. FTP
- C. iSCSI
- D. IFS

**Answer: D**

**NEW QUESTION 284**

A network engineer must restore the running configuration on a Cisco Nexus 5000 Series Switch to an existing snapshot called “stable1”. The restore procedure should proceed only if no errors occur. Which configuration should be used to accomplish this goal?

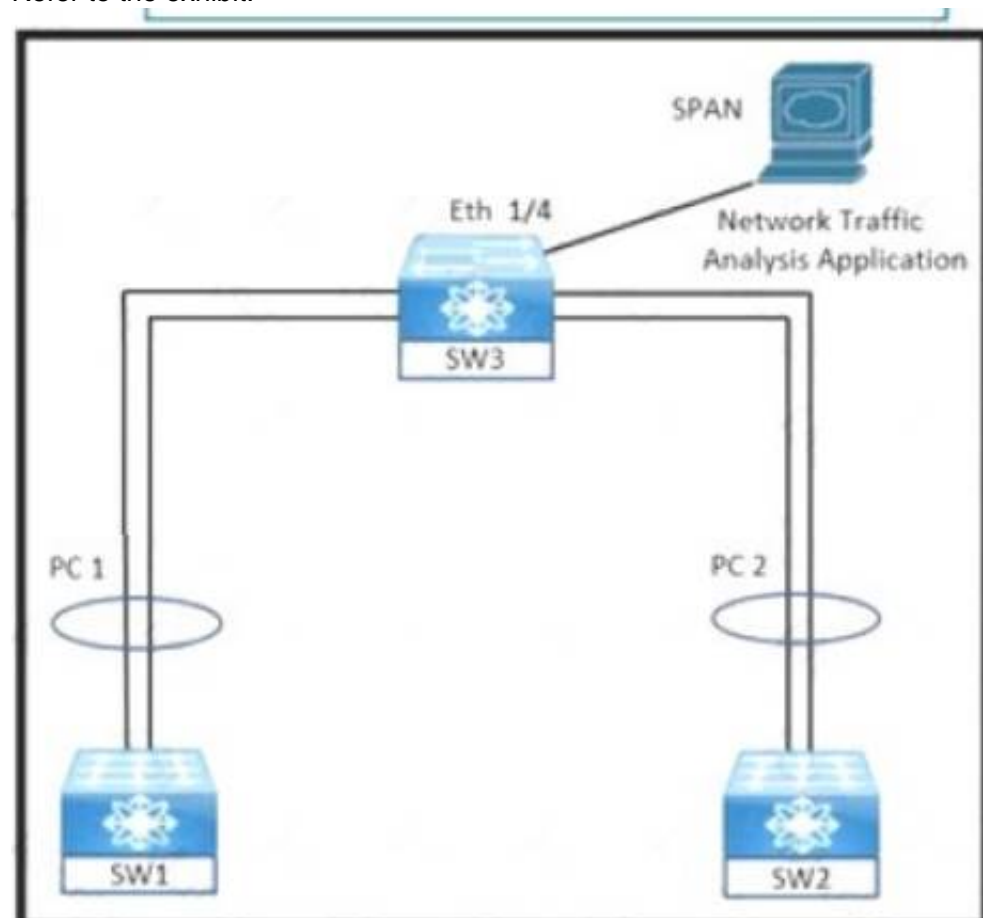
- ☐ rollback running-config checkpoint stable1 best-effort
- ☐ rollback checkpoint stable1 best-effort running-config atomic
- ☐ rollback checkpoint stable1 best-effort running-config best-effort
- ☐ rollback running-config checkpoint stable1 atomic

- A. Option A
- B. Option B
- C. Option C
- D. Option D

**Answer: D**

**NEW QUESTION 286**

Refer to the exhibit.



An engineer must monitor ingress traffic from SW1 and SW2 port-channel interfaces from SW3. Which configuration must be implemented to accomplish this goal?

A)



```
SW3# configure terminal
SW3(config)# source interface port-channel 1 rx
SW3(config)# source interface port-channel 2 tx

SW3(config)# interface ethernet 1/4
SW3(config-if)# destination interface ethernet 1/4
SW3(config-if)# exit

SW3(config)# interface Port-channel 1-2
SW3(config-if)# switchport monitor
SW3(config-if)# exit
```

B)

```
SW3# configure terminal
SW3(config)# monitor session 2
SW3(config-monitor)# source interface port-channel 1 tx
SW3(config-monitor)# source interface port-channel 2 tx

SW3(config)# interface Port-channel 1
SW3(config-if)# switchport monitor
SW3(config-if)# exit

SW3(config)# interface Port-channel 2
SW3(config-if)# switchport monitor
SW3(config-if)# exit
```

C)

```
SW3# configure terminal
SW3(config)# monitor session 2
SW3(config-monitor)# source interface port-channel 1 tx
SW3(config-monitor)# source interface port-channel 2 rx

SW3(config)# interface port-channel 1
SW3(config-if)# switchport monitor
SW3(config-if)# exit

SW3(config)# interface port-channel 2
SW3(config-if)# switchport monitor
SW3(config-if)# exit
```

D)

```
SW3# configure terminal
SW3(config)# monitor session 2
SW3(config-monitor)# source interface port-channel 1 rx
SW3(config-monitor)# source interface port-channel 2 rx

SW3(config)# interface ethernet 1/4
SW3(config-if)# switchport monitor
SW3(config-if)# exit

SW3(config)# monitor session 2
SW3(config-monitor)# destination interface ethernet 1/4
```

- A. Option A
- B. Option B
- C. Option C
- D. Option D

Answer: D

NEW QUESTION 290

A network engineer must implement RBAC on Cisco MDS 9000 Series Multilayer Switches.  
Drag and drop the Cisco MDS 9000 Series roles from the left onto the correct categories on the right.

san-operator

global-admin

server-admin

storage-admin

network-admin

network-operator

System Defined

User Defined

- A. Mastered
- B. Not Mastered

Answer: A

**Explanation:**

Graphical user interface Description automatically generated with low confidence

[https://www.cisco.com/c/en/us/td/docs/unified\\_computing/ucs/ucs-manager/GUI-User-Guides/Admin](https://www.cisco.com/c/en/us/td/docs/unified_computing/ucs/ucs-manager/GUI-User-Guides/Admin)

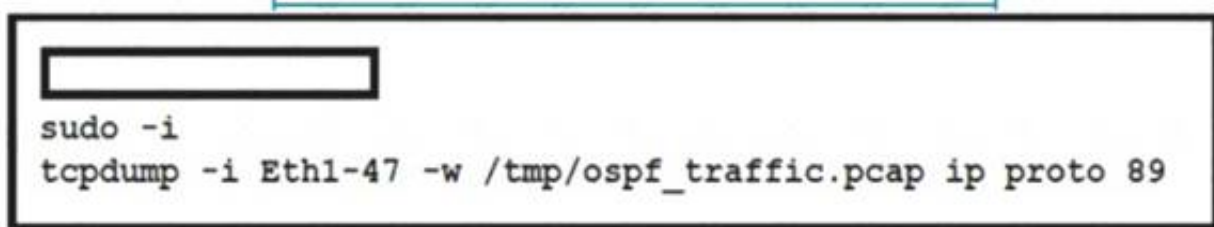
Management/3-1/b\_Cisco\_UCS\_Admin\_Mgmt\_Guide\_3\_1/b\_UCSM\_Admin\_Mgmt\_Guide\_chapter\_01.html

[https://www.cisco.com/c/en/us/td/docs/switches/datacenter/mds9000/sw/8\\_x/config/security/](https://www.cisco.com/c/en/us/td/docs/switches/datacenter/mds9000/sw/8_x/config/security/)

cisco\_mds9000\_security\_config\_guide\_8x/configuring\_users\_and\_common\_roles.html#con\_1422305

**NEW QUESTION 291**

Refer to the exhibit.



A network engineer is using tcpdump to capture a snapshot of OSPF-related traffic on a specific Cisco NX-OS switch port. For security reasons, the capture must be taken using an embedded container that is already deployed on the Cisco Nexus device. Which command completes the script?

- A. guestshell
- B. guestshell-bash
- C. run guestshell
- D. run bash

**Answer:** A

**NEW QUESTION 292**

What is an advantage of NFSv4 over Fibre Channel protocol?

- A. Improved security
- B. Lossless throughout
- C. Congestion management
- D. Uses IP transport

**Answer:** A

**Explanation:**

<https://www.rcannings.com/san-storage-fc-vs-fcoe-vs-iscsi/>

**NEW QUESTION 297**

.....

## Relate Links

**100% Pass Your 350-601 Exam with ExamBible Prep Materials**

<https://www.exambible.com/350-601-exam/>

## Contact us

We are proud of our high-quality customer service, which serves you around the clock 24/7.

Viste - <https://www.exambible.com/>