



Cisco

Exam Questions 010-151

Cisco Certified Technician (CCT) for Data Center

NEW QUESTION 1

Which method does FCIP use to enable connectivity of geographically distributed Fibre Channel SANs over IP?

- A. routing
- B. tunneling
- C. handshaking
- D. transporting

Answer: B

NEW QUESTION 2

Which type of connection across the network does a SAN allow for multiple servers to access an unlimited amount of storage devices?

- A. any-to-many
- B. many-to-any
- C. any-to-any
- D. any-to-one
- E. one-to-any
- F. one-to-one

Answer: C

NEW QUESTION 3

What is the wire transmission speed for 100GBASE-ER4 Ethernet?

- A. 100 Mb/s
- B. 1 Gb/s
- C. 10 Gb/s
- D. 100 Gb/s

Answer: D

NEW QUESTION 4

Which two statements about PCIe are true? (Choose two.)

- A. The PCIe link is built around dedicated unidirectional couples of serial, point-to-point connections known as lane
- B. You can install a PCI Express x8 adapter into an x4 slot
- C. The PCIe standard is a bus-based system in which all the devices share the same bidirectional, 32-bit or 64-bit, parallel signal path
- D. The PCIe 1.0 standard doubles the transfer rate compared to PCIe 2.0.
- E. A link that is composed of four lanes is called an x4 link

Answer: AE

NEW QUESTION 5

Which three statements about FCoE are true? (Choose three.)

- A. Allows Fibre Channel and Ethernet networks to share a single, integrated infrastructure
- B. Encapsulates Fibre Channel frames into Ethernet frames, which allows them to run alongside traditional IP traffic
- C. Increases capital costs due to the difficulty to manage
- D. Consolidates I/O traffic in the data center

Answer: ABD

NEW QUESTION 6

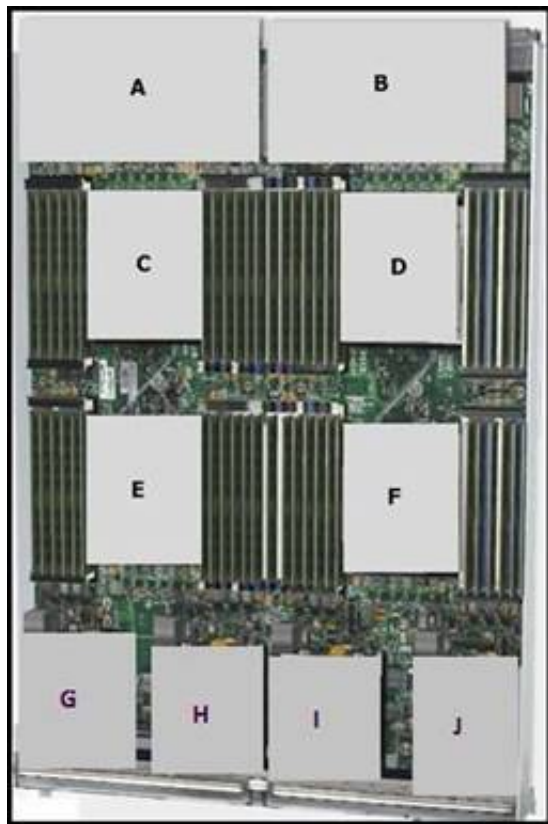
Where do you find the model number of a Cisco MDS 9200 Series chassis?

- A. on the top front of the chassis next to the serial number
- B. on the bottom front of the chassis next to the Cisco logo
- C. on the top front of the chassis next to the Cisco logo
- D. on the bottom front of the chassis next to the serial number

Answer: C

NEW QUESTION 7

Refer to the exhibit.



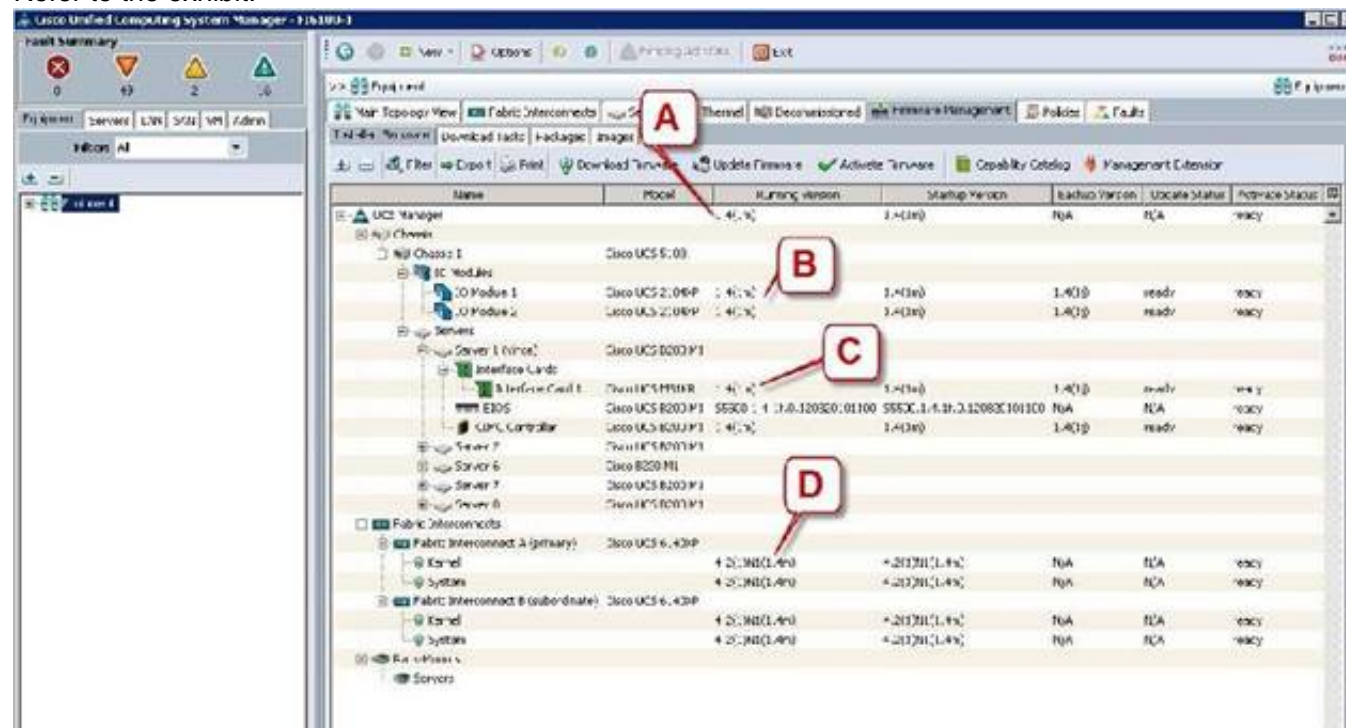
Which item does F represent?

- A. HDD 1
- B. TFP Module
- C. SuperCap Module
- D. CPU 2
- E. CMOS Battery

Answer: D

NEW QUESTION 8

Refer to the exhibit.



Which call-out accurately shows the current running version of the Cisco UCS Manager management software?

- A. A - UCS Manager running version 1.4(1m)
- B. B - IO Module 1 running version 1.4(1m)
- C. C - Interface Card 1 running version 1.4(1m)
- D. D - Kernel running version 4.2(1)N(1.4m)

Answer: A

NEW QUESTION 9

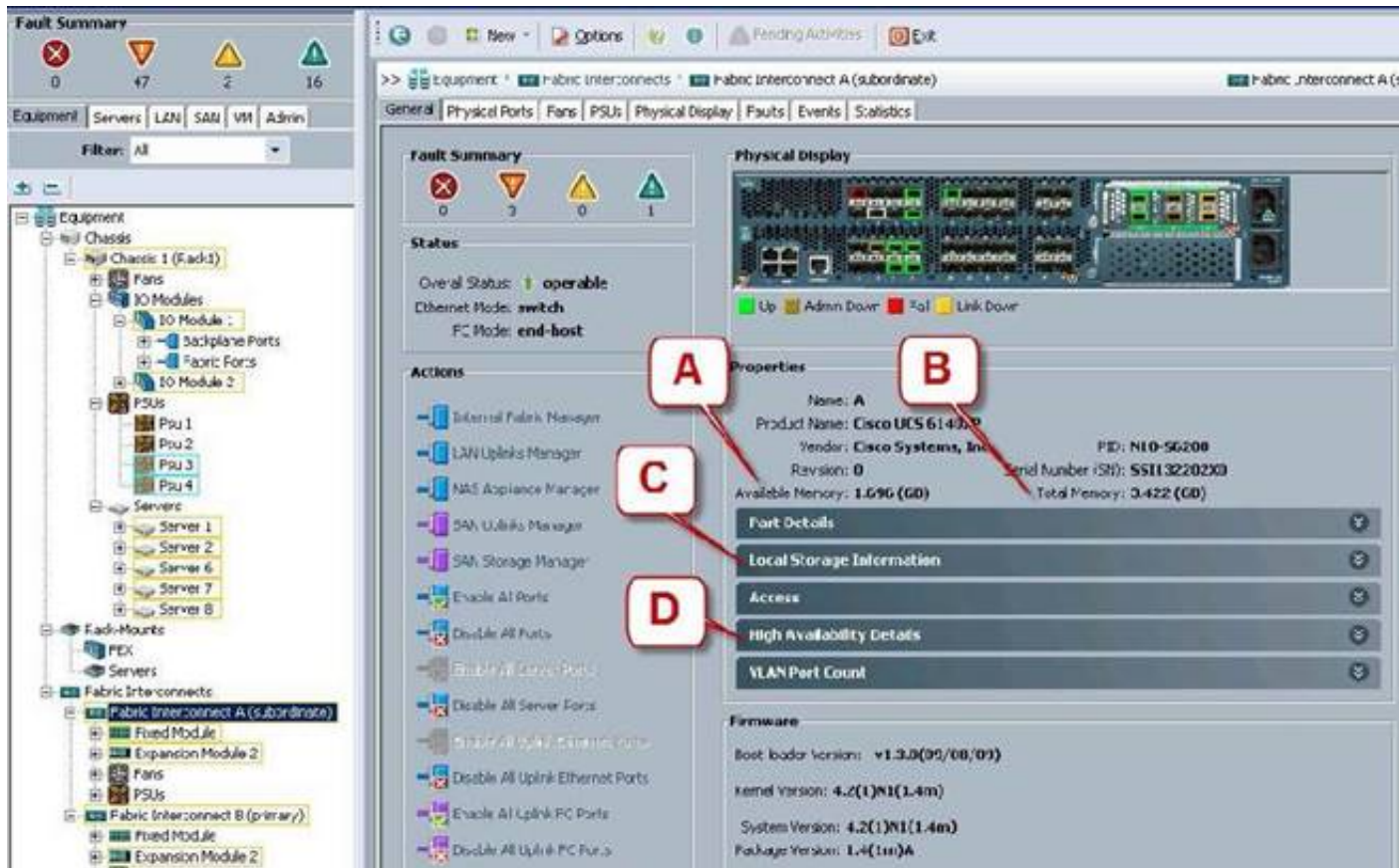
Which command saves the active configuration to NVRAM?

- A. copy startup-config running-config
- B. copy active-config backup-config
- C. copy running-config startup-config
- D. copy backup-config active-config

Answer: C

NEW QUESTION 10

Refer to the exhibit.



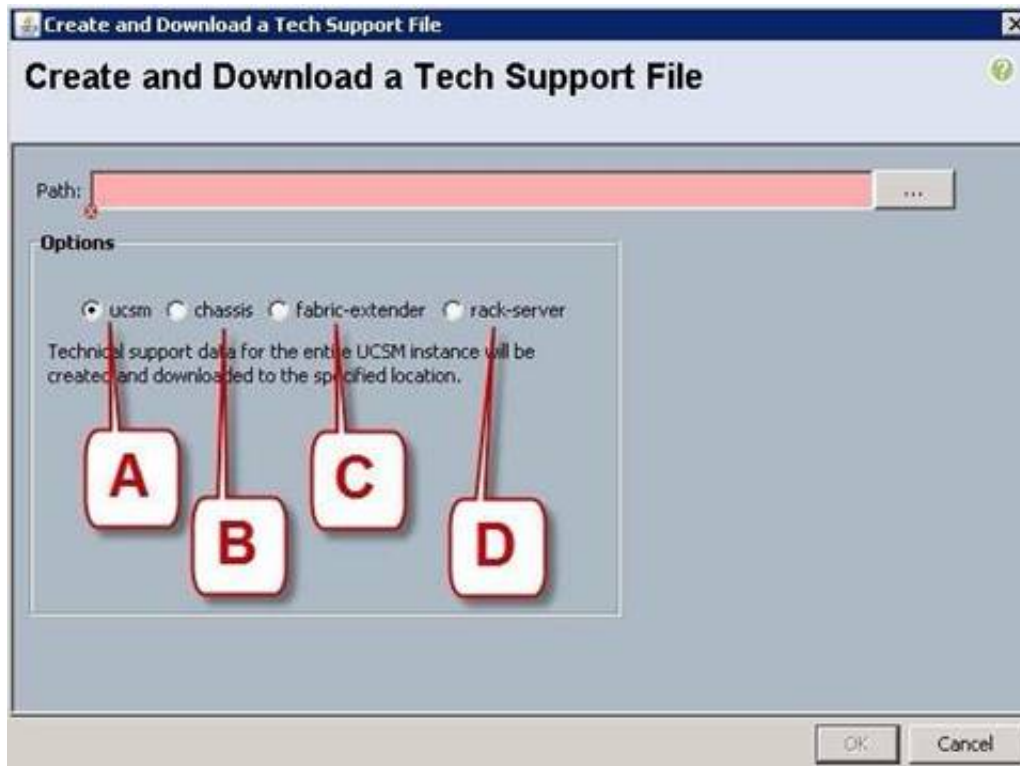
Where is the best place to see bootflash free space?

- A. A - Available Memory
- B. B - Total Memory
- C. C - Local Storage Information
- D. D - High Availability Details

Answer: C

NEW QUESTION 10

Refer to the exhibit.



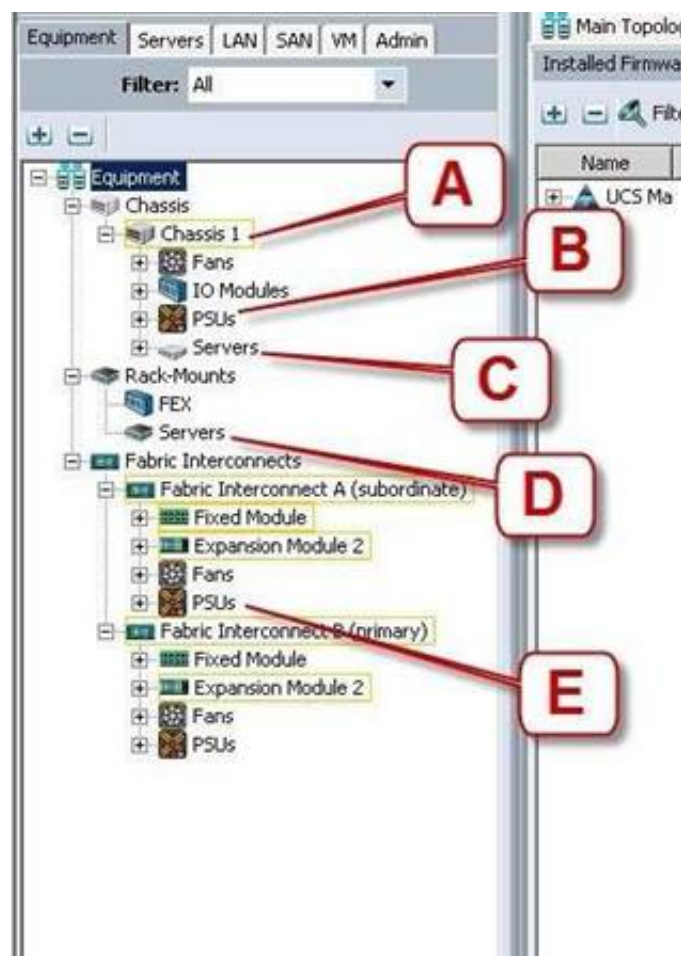
Which option should you select to get the output of the show tech-support detail command for the Cisco UCS B-Series blade?

- A. A - ucsm
- B. B - chassis
- C. C - fabric-extender
- D. D - rack-server

Answer: B

NEW QUESTION 14

Refer to the exhibit.



Where is the best place to see the power supply status of the blade server enclosure?

- A. A - Chassis 1
- B. B - Chassis 1 - PSUs
- C. C - Chassis1 - Servers
- D. D - Rack-Mounts - Servers
- E. E - Fabric Interconnects A - PSUs

Answer: B

NEW QUESTION 15

Which tool does a network administrator not need when installing hardware?

- A. cable tester
- B. wrench set
- C. cable wraps
- D. needle-nose pliers
- E. PCMCIA memory
- F. soldering iron with grounded tip

Answer: F

NEW QUESTION 16

What is the correct path to verify the Overall Status of Chassis 1 | Server 3?

- A. Equipment Tab > Chassis > Chassis 1 > Servers > Server 3 Status tab
- B. Equipment Tab > Chassis > Chassis 1 > Servers > Server 3 General tab
- C. Equipment Tab > Chassis > Chassis 1 > Servers > Server 3 FSM tab
- D. Servers Tab > Chassis > Server 3 General tab
- E. Status Tab > Chassis > Chassis 1 > Servers > Server 3
- F. Admin Tab > Chassis > Chassis 1 > Servers > Server 3 General tab

Answer: B

NEW QUESTION 17

Which three components are hot swappable in a Cisco UCS Blade Server and Chassis? (Choose three.)

- A. Fabric Extender
- B. Power supply
- C. Heat sink
- D. SAS Hard Drive
- E. 2x8GB Kit DIMMs
- F. Mezzanine card

Answer: ABD

NEW QUESTION 19

Which five things should the administrator verify after performing maintenance or replacing a blade server? (Choose five.)

- A. blade server status
- B. hard drive status

- C. host OS boot status
- D. CPU status
- E. mezzanine card status
- F. memory DIMM status
- G. fan and power status

Answer: ABDEF

NEW QUESTION 24

Which two commands allow you to view the state of high availability between the two clustered Fabric Interconnects? (Choose two.)

- A. show cluster state extended
- B. show cluster extended-state
- C. show cluster HA status
- D. show cluster state

Answer: BD

NEW QUESTION 29

Which two remote file system methods are used in the training material to transfer firmware to the Fabric Interconnect? (Choose two.)

- A. FTPS
- B. FTP
- C. TFTP
- D. RSH

Answer: BC

NEW QUESTION 31

When a host firmware package policy is created, what must it be associated with to upgrade the BIOS?

- A. blade or blade pool
- B. service profile
- C. boot policy
- D. service template

Answer: B

NEW QUESTION 35

Which two Cisco Nexus switches provide the foundation of the Cisco Application Centric Infrastructure? (Choose two.)

- A. Cisco Nexus 7718 switch
- B. Cisco Nexus 9508 switch
- C. Cisco Nexus 7710 switch
- D. Cisco Nexus 93128TX switch
- E. Cisco Nexus 6004 switch

Answer: BD

NEW QUESTION 38

Which type of optics module is supported by a 6-port 40 GE Cisco Nexus 7000 M2 Series I/O module?

- A. CPAK
- B. QSFP+
- C. SFP/SFP+
- D. CFP

Answer: B

NEW QUESTION 41

DRAG DROP

Drag the cable or connector on the left to the correct interface on the right.

KVM dongle	Fabric Interconnect to Fabric Extender
straight-through Ethernet cable	console port
mini USB cable	MDS
Twinax cable	C-Series Rack Server
Fiber Channel SFP	from laptop to Management Port
rolled RJ-45 cable	
SAS cable	

- A. Mastered
- B. Not Mastered

Answer: A

Explanation:

Drag the cable or connector on the left to the correct interface on the right.

KVM dongle	Twinax cable
straight-through Ethernet cable	rolled RJ-45 cable
mini USB cable	Fiber Channel SFP
Twinax cable	KVM dongle
Fiber Channel SFP	straight-through Ethernet cable
rolled RJ-45 cable	
SAS cable	

NEW QUESTION 46

.....

Thank You for Trying Our Product

We offer two products:

1st - We have Practice Tests Software with Actual Exam Questions

2nd - Questions and Answers in PDF Format

010-151 Practice Exam Features:

- * 010-151 Questions and Answers Updated Frequently
- * 010-151 Practice Questions Verified by Expert Senior Certified Staff
- * 010-151 Most Realistic Questions that Guarantee you a Pass on Your First Try
- * 010-151 Practice Test Questions in Multiple Choice Formats and Updates for 1 Year

100% Actual & Verified — Instant Download, Please Click
[Order The 010-151 Practice Test Here](#)