

## Exam Questions 200-901

Developing Applications and Automating Workflows using Cisco Core Platforms (DEVASC)

<https://www.2passeasy.com/dumps/200-901/>



### NEW QUESTION 1

- (Exam Topic 3)

Which TCP port is used to connect to a network device by using Telnet?

- A. 23
- B. 69
- C. 400
- D. 830

Answer: A

### NEW QUESTION 2

- (Exam Topic 3)

```
get_interface_info_by_id(device_id, headers=None, **request_parameters)
```

[\[source\]](#)

Returns list of interfaces by specified device.

Parameters

- `device_id` (*basestring*) – Device ID.
- `headers` (*dict*) – Dictionary of HTTP Headers to send with the Request .
- `**request_parameters` – Additional request parameters (provides support for parameters that may be added in the future).

Returns

JSON response. Access the object's properties by using the dot notation or the bracket notation.

Return type

`MyDict`

Raises

- `TypeError` – If the parameter types are incorrect.
- `MalformedRequest` – If the request body created is invalid.
- `ApiError` – If the DNA Center cloud returns an error.

Refer to the exhibit. Drag and drop the code from the bottom onto the box where the code is missing to return the number of interfaces on a network device by using the Cisco DNA Center SDK. Not all options are used.

```
from dnacentersdk import DNACenterAPI
base_url = 'https://10.9.11.226'
[ ] = 'da4606c3-63ad-4ed4-8f35-6bfec7c2df04'

dnac = [ ](username='cisco', password='secret',
          base_url=base_url, version='1.3.3', verify=False)

[ ] = [item['portName'] for item in
      dnac.[ ].get_interface_info_by_id(device_id)['response']]

# Check the number of ports on the device
print(f'The list of interfaces contains {len(port_list)} items.')

# Output
# The list of interfaces contains 54 items.
```

router\_id

device\_id

DNACenterAPI

DNAC

port\_list

routers

devices

- A. Mastered
- B. Not Mastered

Answer: A

Explanation:

```
from dnacentersdk import DNACenterAPI
base_url = 'https://10.9.11.226'

device_id = 'da4606c3-63ad-4ed4-8f35-6bfec7c2df04'

dnac = DNACenterAPI(username='cisco', password='secret',
                    base_url=base_url, version='1.3.3', verify=False)

port_list = [item['portName'] for item in
              dnac.devices.get_interface_info_by_id(device_id)['response']]

# Check the number of ports on the device
print(f'The list of interfaces contains {len(port_list)} items.')

# Output
# The list of interfaces contains 54 items.
```



### NEW QUESTION 3

- (Exam Topic 3)

```
import os
import requests

# username and password

API_USER_NAME = "devnetuser"
API_PASSWORD = os.environ['API_PASSWORD']

requests.get('https://api.cisco.com/end-service', auth=(API_USER_NAME, API_PASSWORD))
```

Refer to the exhibit. An engineer must authorize a REST API call. The API password is "Cisco123!". Which Bash command must be placed in the code to authorize the call?

- A. mkdir API\_PASSWORD=Cisco123!
- B. set API\_PASSWORD=Cisco123!
- C. cp API\_PASSWORD=Cisco123!
- D. export API\_PASSWORD=Cisco123!

Answer: D

### NEW QUESTION 4

- (Exam Topic 3)

What is a benefit of version control?

- A. prevents two users from working on the same file
- B. keeps track of all changes to the files
- C. prevents the sharing of files
- D. keeps the list of data types used in the files

Answer: B

### NEW QUESTION 5

- (Exam Topic 3)

A developer is working on a new feature in a branch named 'newfeat123456789' and the current working primary branch is named 'prim987654321'. The developer requires a merge commit during a fast forward merge for record-keeping purposes. Which Git command must be used?

- A. git merge --no-ff newfeat123456789
- B. git commit --no-ff newfeat123456789
- C. git add --commit-ff newfeat123456789
- D. git reset --commit-ff newfeat123456789

Answer: A

### NEW QUESTION 6

- (Exam Topic 3)

Which function does a router provide to a network?

- A. broadcast domain segmentation

- B. unique host on a Layer 3 network
- C. unique hardware address for every node on a LAN
- D. broadcast domain extension

**Answer:** B

#### NEW QUESTION 7

- (Exam Topic 3)

Which Python function is used to parse a string that contains JSON data into a Python dictionary?

- A. json.dumps()
- B. json.to\_json()
- C. json.parse()
- D. json.loads()

**Answer:** D

#### Explanation:

loads() function is present in python built-in 'json' module. This function is used to parse the JSON string.

#### NEW QUESTION 8

- (Exam Topic 3)

To which stage of development do Infrastructure as Code principles relate?

- A. manual configuration
- B. service provisioning
- C. physical deployment
- D. requirement collection

**Answer:** B

#### NEW QUESTION 9

- (Exam Topic 3)

Drag and drop the steps from the left into order on the right to create a common CI/CD pipeline process. Not all options are used.

Build	step 1
Commit	step 2
Deploy	step 3
Evaluate	step 4
Test	
Regress	

- A. Mastered
- B. Not Mastered

**Answer:** A

#### Explanation:

Build	Commit
Commit	Build
Deploy	Test
Evaluate	Deploy
Test	
Regress	

#### NEW QUESTION 10

- (Exam Topic 3)



Which two situations align with infrastructure as code principles? (Choose two.)

- A. nonreplicable snowflake servers
- B. release versions to specific hardware
- C. maximized configuration drift
- D. easily reproducible systems
- E. repeatable processes

Answer: BD

#### NEW QUESTION 10

- (Exam Topic 3)



Refer to the exhibit. Drag and drop the code from the bottom onto the box where the code is missing to construct a Python script by using the Cisco SDK. Not all options are used.

```
import sys, json, argparse
from intersight.intersight_api_client import IntersightApiClient
from intersight.apis import asset_device_registration_api, asset_device_claim_api

result = dict(changed=False)

parser = argparse.ArgumentParser()
parser.add_argument('-a', '--api_params', default='intersight_api_params.json')
parser.add_argument('-t', '--target_host', dest='hostname', required=True)
args = parser.parse_args()
with open(args.api_params, 'r') as api_file:
    intersight_api_params = json.load( )
api_instance = IntersightApiClient(
    host=intersight_api_params[' '],
    private_key=intersight_api_params['api_private_key_file'],
    api_key_id=intersight_api_params['api_key_id'],
)
api_handle = asset_device_registration_api.AssetDeviceRegistrationApi(api_instance)

kwargs = dict(filter="ConnectionStatus eq 'Connected'")
= api_handle.asset_device_registrations_get(** )
for device in api_result.results:
    if device.device_ip_address[0] == args.hostname:
        api_handle = asset_device_claim_api.AssetDeviceClaimApi(api_instance)
        api_handle.asset_device_claims_moid_delete(moid=device.device_claim.moid)
        result['changed'] = True
        break
```

- kwargs
- args
- api\_file
- api\_key
- api\_base\_uri
- result
- api\_result

- A. Mastered
- B. Not Mastered

Answer: A

Explanation:

```
import sys, json, argparse
from intersight.intersight_api_client import IntersightApiClient
from intersight.apis import asset_device_registration_api, asset_device_claim_api

result = dict(changed=False)

parser = argparse.ArgumentParser()
parser.add_argument('-a', '--api_params', default='intersight_api_params.json')
parser.add_argument('-t', '--target_host', dest='hostname', required=True)
args = parser.parse_args()
with open(args.api_params, 'r') as api_file:
    intersight_api_params = json.load( api_file )
api_instance = IntersightApiClient(
    host=intersight_api_params[ api_base_uri ],
    private_key=intersight_api_params[ api_private_key_file ],
    api_key_id=intersight_api_params[ api_key_id ],
)
api_handle = asset_device_registration_api.AssetDeviceRegistrationApi(api_instance)

kwargs = dict(filter="ConnectionStatus eq 'Connected'")
result = api_handle.asset_device_registrations_get(** kwargs )
for device in api_result.results:
    if device.device_ip_address[0] == args.hostname:
        api_handle = asset_device_claim_api.AssetDeviceClaimApi(api_instance)
        api_handle.asset_device_claims_moid_delete(moid=device.device_claim.moid)
        result['changed'] = True
        break
```

kwargs    args    api\_file    api\_key    api\_base\_uri    result

api\_result

#### NEW QUESTION 15

- (Exam Topic 3)

How are operations on REST APIs performed as compared to RPC APIs?

- A. In a REST API, operations are performed on an object (node) that is identified by a URL, but RPC APIs are operation-oriented.
- B. In a REST API, operations are performed on an external resource that is defined on the API, but the RCP APIs are resource-oriented.
- C. In a REST API, operations are performed on a platform that is identified by the URL, but RPC APIs are platform-oriented.
- D. In a REST API, operations are performed on an internal resource that is defined on the API, but RPC APIs are resource-oriented.

**Answer: D**

#### Explanation:

In a REST API, operations are performed on resources, which are accessed and manipulated using HTTP verbs such as GET, POST, PUT, and DELETE. These resources are identified by a URL and are defined within the API. For example, an API may define a resource called "customers", which can be accessed using the URL "http://api.example.com/customers". To retrieve a list of customers, the client could make a GET request to this URL. To create a new customer, the client could make a POST request to the same URL with the necessary data in the request body. In contrast, in an RPC API, operations are performed by making function calls. The client makes a request to the server, specifying the function to be called and any necessary parameters. The server then executes the function and returns the result to the client. RPC APIs are operation-oriented, meaning that the focus is on the function being called rather than the resource being accessed.

#### NEW QUESTION 19

- (Exam Topic 3)

A company wants to automate the orders processed on its website using API. The network device that supports the solution must:

- support XML encoding
- support distributed transactions
- support YANG data models
- be support software redundancy

Which requirement prevents the use of RESTCONF for the solution?

- A. software redundancy
- B. YANG data models
- C. distributed transactions
- D. XML encoding

**Answer: C**

#### NEW QUESTION 24

- (Exam Topic 3)

Which OWASP threat occurs when untrusted data is supplied as input to an interpreter as part of a command or query?

- A. broken authentication
- B. data exposure
- C. injection
- D. cross-site scripting

Answer: C

#### NEW QUESTION 26

- (Exam Topic 3)

What is a feature of XML compared to other data formats?

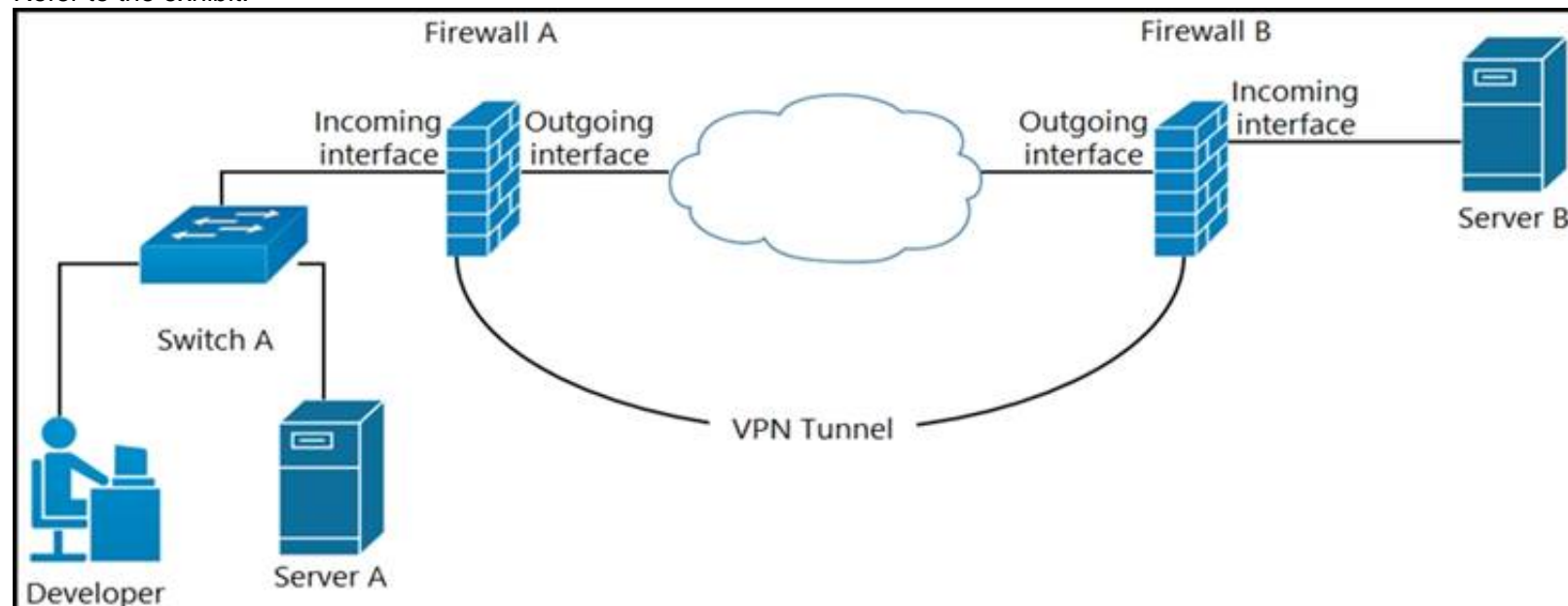
- A. It uses tags to define the structure.
- B. It uses parenthesis for key-value pairs.
- C. It uses indentation to define the structure.
- D. It uses namespaces for list representation.

Answer: A

#### NEW QUESTION 28

- (Exam Topic 3)

Refer to the exhibit.



A developer can access the TLS REST API on server A, but cannot access the API on server B. The developer can ping server B. When the developer performs a packet capture on the TLS REST API port on server B, the capture shows that the packet arrived and the server responded. What causes the issue?

- A. Port 80 is blocked on the outgoing interface of firewall B.
- B. Port 443 is blocked on the outgoing interface of firewall A.
- C. Port 443 is blocked on the incoming interface of firewall B.
- D. Port 80 is blocked on the incoming interface of firewall A.

Answer: C

#### NEW QUESTION 31

- (Exam Topic 3)

A developer creates an application that must provide an encrypted connection or API keys. The keys will be used to communicate with a REST API. Which command must be used for the secure connection?

- A. curl-X PUSH 'http://username.app.com/endpoint/?api\_key=12345abcdef'
- B. curl -v 'ftp://username.app.com/endpoint/?api\_key=12345abcdef'
- C. curl -X GET 'https://username.app.com/endpoint/?api\_key=12345abcdef'
- D. curl-X GET 'http://username.app.com/endpoint/?api\_key=12345abcdef'

Answer: C

#### NEW QUESTION 36

- (Exam Topic 3)

A developer writes an application that refines data in temporary secure file storage hosted on the public cloud. Data will be deleted after processing and does not contain any private information. What is the advantage that a public cloud deployment provides to the developer?

- A. high security with encryption
- B. ease in infrastructure management
- C. flexible development
- D. bespoke services

Answer: B

#### NEW QUESTION 39

- (Exam Topic 3)

Which protocol runs over TCP port 830?

- A. NETCONF
- B. Telnet
- C. RESTCONF
- D. HTTP



**Answer:** A

**NEW QUESTION 44**

- (Exam Topic 3)

What is the purpose of grouping devices in a VLAN?

- A. Devices communicate as if they are connected on the same wire.
- B. Multicast network traffic is limited to the VLAN connected devices.
- C. Unicast messages are limited to the clients connected on the same VLAN.
- D. Network traffic is load balanced between the devices connected to the VLAN.

**Answer:** B

**NEW QUESTION 48**

- (Exam Topic 3)

What is a characteristic of the Cisco Finesse platform?

- A. Applications allow services to be invoked on a network triggered event.
- B. The platform provides a ready-to-go platform for HD video and audio conferencing.
- C. Applications are added to the platform from the desktop remotely.
- D. The platform includes an enterprise-class IM engine.

**Answer:** A

**Explanation:**

A characteristic of the Cisco Finesse platform is that applications allow services to be invoked on a network triggered event. Cisco Finesse is a next-generation agent and supervisor desktop designed to provide a rich, browser-based experience for contact center agents and supervisors. It offers a flexible, open development platform that allows developers to build custom applications and integrations to meet the specific needs of their contact center. One of the key features of Cisco Finesse is the ability to trigger actions based on events within the contact center network, such as an incoming call or a change in the status of a customer's account. This allows developers to build applications that can react to real-time events and provide relevant information or services to agents as they handle customer interactions.

**NEW QUESTION 53**

- (Exam Topic 3)

A company requires a new platform to store large volumes of log data that is generated in their assembly plant. The platform must be scalable, so the underlying technology must provide a path for fast deployment of new nodes for data and indexing? The data contains sensitive information, so specialist encryption tools must be used to secure the data. Which application deployment model meets the requirements?

- A. edge
- B. private cloud
- C. public cloud
- D. hybrid cloud

**Answer:** D

**Explanation:**

A hybrid cloud combines the benefits of both a private cloud, which offers the ability to store sensitive data in a secure, dedicated environment, and a public cloud, which offers the ability to scale quickly and easily by deploying new nodes as needed. With a hybrid cloud deployment, you could use specialist encryption tools to secure the sensitive data in the private cloud, and then take advantage of the scalability and flexibility of the public cloud to handle the large volumes of log data.

**NEW QUESTION 55**

- (Exam Topic 3)

What is a capability of Ansible playbooks?

- A. They execute scheduled tasks regularly.
- B. They define the state for a device configuration.
- C. They collect SNMP logs from networking devices.
- D. They utilize the target device agent to execute.

**Answer:** A

**NEW QUESTION 60**

- (Exam Topic 3)

Refer to the exhibit.



```

1  <routing xmlns="urn:ietf:params:xml:ns:yang:ietf-routing">
2    <routing-instance>
3      <name>default</name>
4      <description>default-vrf [read-only]</description>
5      <routing-protocols>
6        <routing-protocol>
7          <type xmlns:ospf="urn:ietf:params:xml:ns:yang:ietf-
*          ospf">ospf:ospfv2</type>
8          <name>100</name>
9          <ospf xmlns="urn:ietf:params:xml:ns:yang:ietf-ospf">
10           <instance>
11             <af xmlns:rt="urn:ietf:params:xml:ns:yang:ietf-
*             routing">rt:ipv4</af>
12             <router-id>1.1.1.1</router-id>
13             <nsr>
14               <enable>false</enable>
15             </nsr>
16             <auto-cost>
17               <enable>false</enable>
18             </auto-cost>
19             <redistribution
*             xmlns="urn:ietf:params:xml:ns:yang:cisco-ospf">
20               <rip/>
21             </redistribution>
22           </instance>
23         </ospf>
24       </routing-protocol>
25     </routing-protocols>
26   </routing-instance>
27 </routing>

```

What are two characteristics of the NETCONF response? (Choose two.)

- A. ospf is defined by the ietf-ospf module.
- B. ietf-ospf imports ietf-routing.
- C. redistribution is a module of type cisco-ospf.
- D. routing protocols is a list.
- E. The main module is routing.

**Answer:** BC

#### NEW QUESTION 64

- (Exam Topic 3)

Which technology is responsible for matching a name to an IP address of an application running on a host?

- A. firewall
- B. proxy
- C. load balancer
- D. DNS

**Answer:** D

#### NEW QUESTION 68

- (Exam Topic 3)

An engineer must make changes on a network device through the management platform API. The engineer prepares a script to send the request and analyze the response, check headers, and read the body according to information inside response headers. Drag and drop the HTTP header values from the left onto the elements of an HTTP response on the right.

16974	cache-control
no-store, must-revalidate	content-length
timeout=5, max=100	keep-alive
application/json; charset=UTF-8	content-type

- A. Mastered
- B. Not Mastered

Answer: A

Explanation:

16974	no-store, must-revalidate
no-store, must-revalidate	16974
timeout=5, max=100	timeout=5, max=100
application/json;charset=UTF-8	application/json;charset=UTF-8

NEW QUESTION 69

- (Exam Topic 3)

What is a characteristic of RPC APIs compared to REST APIs?

- A. Authentication is done over provisions for the service caller and vice versa for RPC API, and REST API uses HTTP headers for authentication.
- B. All communications between the client and server must be stateless for RPC API, and REST API is stateful.
- C. The architecture model for RPC API is resource-focused, and REST API is procedure-focused.
- D. The data payload must be in JSON format for RPC API, and REST API allows JSON and XML formats.

Answer: A

NEW QUESTION 74

- (Exam Topic 3)

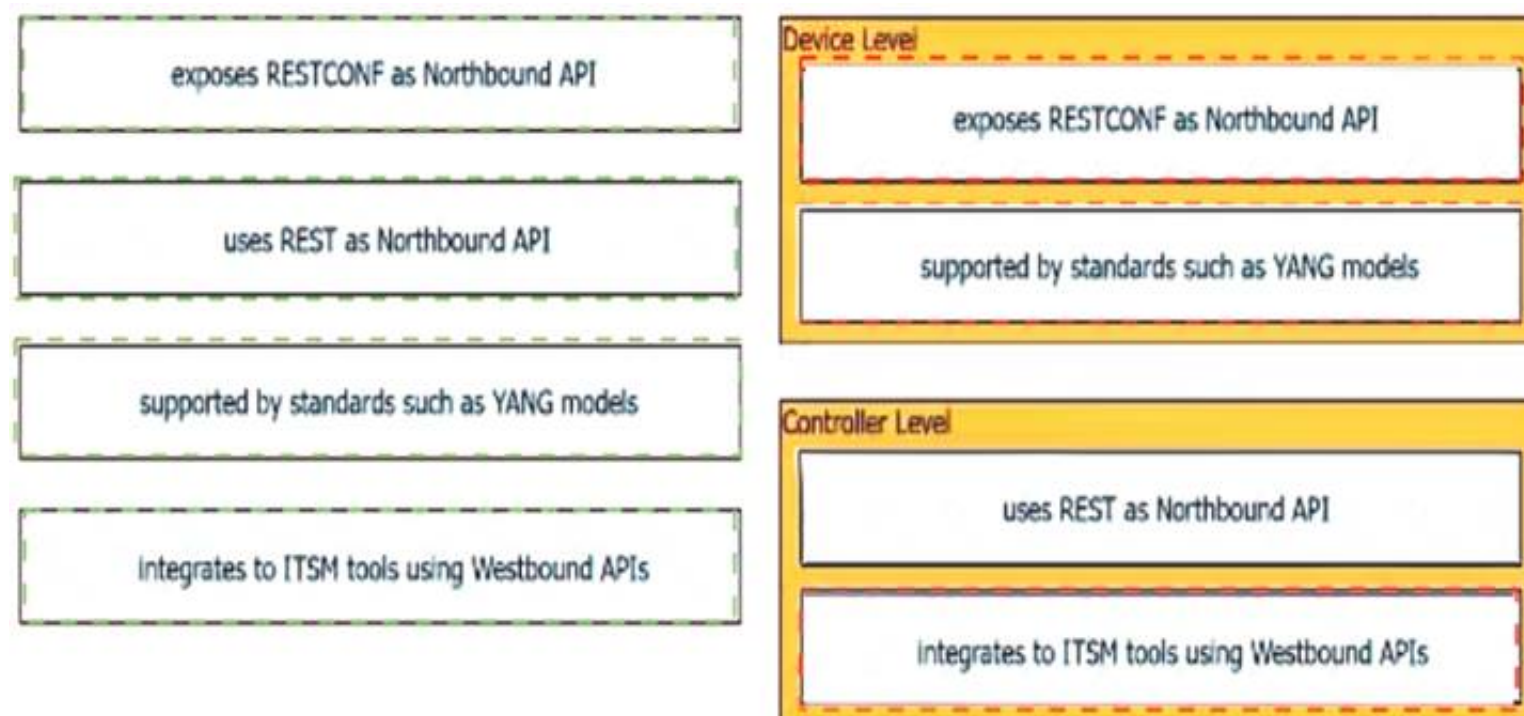
Drag and drop characteristics from the left onto the infrastructure management methodologies on the right.

exposes RESTCONF as Northbound API	Device Level
uses REST as Northbound API	
supported by standards such as YANG models	Controller Level
Integrates to ITSM tools using Westbound APIs	

- A. Mastered
- B. Not Mastered

Answer: A

Explanation:



### NEW QUESTION 78

- (Exam Topic 3)

Refer to the exhibit.

```
1 import requests
2
3 url = "https://api.meraki.com/api/v0/organizations/{{organizationId}}/insight/
* monitoredMediaServers"
4
5 payload = {
6     "name": "Sample VoIP Provider",
7     "address": "123.123.123.1"
8 }
9 headers = {
10     'Accept': '*/*',
11     'Content-Type': 'application/json'
12 }
13
14 response = requests.request("POST", url, headers=headers, data=payload)
15
16 print(response.text.encode('utf8'))
```

Which workflow does the script automate?

- A. retrieves a media server that is being monitored
- B. updates a media server that is being monitored
- C. adds a media server to be monitored
- D. deletes a media server that is being monitored

Answer: C

### NEW QUESTION 81

- (Exam Topic 3)

A developer has experienced security issues with a previously developed application. The API offered by that application is open and without any constraints. During a recent attack, the application was overloaded with API requests. To address this issue, an API constraint is implemented to protect the application from future attacks or any sudden throttling. Which API constraint must the application developer implement in this situation?

- A. pagination
- B. rate limiting
- C. filtering
- D. payload limiting

Answer: B

### NEW QUESTION 83

- (Exam Topic 3)

A developer is running an application that connects to the Cisco website and collects data. The application will be hosted in a local data center and the data will need to be collected on a frequent basis. The application client requires certain environmental variables to be set before the run. Which Bash command sets the environmental variables for a Linux system?

- A. `"cisco.com"=WEBSITE`
- B. `export lvar=23`
- C. `WEBSITE="cisco.com"`
- D. `export website="cisco.com"`



Answer: D

### NEW QUESTION 87

- (Exam Topic 3)

Drag and drop the capabilities from the left onto the Cisco Network Management Platforms that support the capabilities on the right.

receives AI/ML network performance insights, and uses guided issue remediation	Meraki
achieves automation through common policy for data center operations	Cisco DNA Center
establishes an overlay fabric to connect data centers, branches, and campuses through vManage	ACI
provisions and manages networks, networking devices, and clients through a fully managed cloud service	Cisco SD-WAN
supports multivendor networks through Network Element Drivers	NSO

A. Mastered

B. Not Mastered

Answer: A

Explanation:

receives AI/ML network performance insights, and uses guided issue remediation	provisions and manages networks, networking devices, and clients through a fully managed cloud service
achieves automation through common policy for data center operations	receives AI/ML network performance insights, and uses guided issue remediation
establishes an overlay fabric to connect data centers, branches, and campuses through vManage	achieves automation through common policy for data center operations
provisions and manages networks, networking devices, and clients through a fully managed cloud service	establishes an overlay fabric to connect data centers, branches, and campuses through vManage
supports multivendor networks through Network Element Drivers	supports multivendor networks through Network Element Drivers

### NEW QUESTION 90

- (Exam Topic 3)

Which IP service synchronizes the time across devices?

- A. DNS
- B. NTP
- C. SNMP
- D. NAT

Answer: B

### NEW QUESTION 93

- (Exam Topic 3)

During which step of the CI/CD pipeline for infrastructure automation is code from multiple developers combined to compile and test different components?

- A. integration
- B. deployment
- C. development
- D. testing



Answer: A

#### NEW QUESTION 95

- (Exam Topic 3)

```
$ find /home/user/backup -mtime +30 -type f -print
$ find /home/user/backup -mtime +30 -type f -delete
```

Refer to the exhibit. An engineer is managing the network of an enterprise. The network is using a distributed deployment model. The enterprise uses database to store logs. The current policy requires logs to be stored if changes are made to the infrastructure in any of the devices on the data centers. Which workflow is being automated by the Bash script?

- A. returning backup files that are older than 30 days
- B. deleting backup files that are older than 30 days
- C. configuring the directory to delete files automatically
- D. automating deletion of all backup files every 30 days

Answer: B

#### NEW QUESTION 98

- (Exam Topic 3)

A company deploys an application via containers in its local data center. As soon as the application goes into production, it starts to crash at specific hours of the day. After investigation, it is concluded that the crashes are due to too many users accessing the application simultaneously. The spikes must be addressed and allow for future growth without discarding the investment already made. Which deployment model must be used?

- A. hybrid cloud
- B. edge
- C. private cloud
- D. public cloud

Answer: A

#### NEW QUESTION 100

- (Exam Topic 3)

A team of developers is responsible for a network orchestration application in the company. The responsibilities also include: developing and improving the application in a continuous manner deployment of the application and management of CI/CD frameworks monitoring the usage and problems and managing the performance improvements Which principle best describes this DevOps practice?

- A. responsible for IT operations
- B. automation of processes
- C. end-to-end responsibility
- D. quality assurance checks

Answer: C

#### NEW QUESTION 104

- (Exam Topic 3)

```
---
param0: Workflow1
param1:
  list:
    - name: VLAN_ID
      value: '198'
param2: 0
```

Refer to the exhibit. The YAML shown contains an object "param0" that is equal to "Workflow1", a second object "param1" that contains an object called "list" which contains an array of two objects, "name" (equal to "VLAN\_ID") and "value" (equal to a text value "198"), and finally a third object "param2" that is equal to "0". What is the equivalent message in JSON data format?

- A. 

```
[
  "param0"="Workflow1";
  "param1"=
    "list"=
      [{"name"="VLAN_ID";
        "value"="198"}]
  "param2"=0
]
```

B.

```
{
  "param0": "Workflow1";
  "param1": {
    "list": [
      { "name": "VLAN_ID";
        "value": "198" }
    ]
  },
  "param2": 0
}
```

C. [

```
  "param0": "Workflow1",
  "param1": {
    "list": [
      { "name": "VLAN_ID",
        "value": "198" }
    ]
  },
  "param2": 0
]
```

D. [

```
  "param0": "Workflow1",
  "param1": {
    "list": [
      { "name": "VLAN_ID",
        "value": "198" }
    ]
  },
  "param2": 0
]
```

Answer: D

#### NEW QUESTION 106

- (Exam Topic 3)

#### SDK Documentation:

##### OrganizationController:

```
get_organizations()
get_network_device(dict)
```

##### DevicesController:

```
get_network_devices(id)
```

##### NetworksController:

```
get_organization_networks(dict)
```

Refer to the exhibit. A script must output details of all the Cisco Meraki MS220-BP switches across all organizations and networks. Drag and drop the code snippets from the bottom onto the boxes in the code to complete the script. Not all options are used.

```
from meraki_sdk.meraki_sdk_client import MerakiSdkClient
from meraki_sdk.exceptions.api_exception import APIException

api_key = "API_KEY"
client = MerakiSdkClient(api_key)

for org in [ ]:
    try:
        options = {"organization id": org["id"]}
        networks = [ ]
        for network in networks:
            devices = [ ]
            for device in devices:
                if device["model"] == "MS220-8P":
                    options = {"network id": network["id"], "serial": device["serial"]}
                    output = [ ]
                    print(output)
            except APIException as e:
                pass
```

client.organizations.get\_organizations() :

client.networks.get\_organization\_networks(api\_key)

client.networks.get\_organization\_networks(options)

client.devices.get\_network\_devices(network ["id"])

client.devices.get\_network\_device(options=options)

client\_devices.get\_network\_device(device ["model"])

- A. Mastered  
 B. Not Mastered

Answer: A

Explanation:

```
from meraki_sdk.meraki_sdk_client import MerakiSdkClient
from meraki_sdk.exceptions.api_exception import APIException

api_key = "API_KEY"
client = MerakiSdkClient(api_key)

for org in [ ]:
    try:
        options = {"organization id": org["id"]}
        networks = [ ]
        for network in networks:
            devices = [ ]
            for device in devices:
                if device["model"] == "MS220-8P":
                    options = {"network id": network["id"], "serial": device["serial"]}
                    output = [ ]
                    print(output)
            except APIException as e:
                pass
```

client.organizations.get\_organizations() :

client.networks.get\_organization\_networks(api\_key)

client.networks.get\_organization\_networks(options)

client.devices.get\_network\_devices(network ["id"])

client.devices.get\_network\_device(options=options)

client\_devices.get\_network\_device(device ["model"])

#### NEW QUESTION 107

- (Exam Topic 3)

Which solution reduces costs from MPLS, improves application performance, and simplifies operations?

- A. Cisco NSO  
 B. Cisco SD-WAN  
 C. Cisco ACI  
 D. Cisco DNA Center

Answer: B



### NEW QUESTION 112

- (Exam Topic 3)

What is a firehose webhook?

- A. It collects data from third-party cloud APIs for custom applications.
- B. It enables an application to receive real-time data from Cisco Webex.
- C. It enables data to flow from the Cisco Webex API to a user's application.
- D. It sends a notification of any event for commonly used resources.

Answer: D

### NEW QUESTION 117

- (Exam Topic 3)

```

--- functions.py 2020-09-26 14:26:25.000000000 -0600
--- new.py 2020-09-26 14:26:10.000000000 -0600
@@ -21,7 +21,7 @@
def print_devices_info(devices):
    # Print id, hostname and management IP
    for item in devices:
-        print(item['id'], item['hostname'], item['managementIpAddress'])
+        print(item['id'], item['hostname'])

    # Get Authentication token
    def get_dnac_jwt_token():
@@ -66,9 +66,15 @@
    response = get_devices_list(headers, {})
    print_devices_info(response)

-    # print devices list filtered by hostname
-    print('\nPrinting device list filtered by hostname ...')
-    query_string_params = {'hostname': 'CSR1Kv-01.devnet.local'}
-    response = get_devices_list(headers, query_string_params)
-    print_devices_info(response)
+
+    # print devices list filtered by platform Id
+    print('\nPrinting device list filtered by platform id...')
+    query_string_params = {'platformId': 'C9500-40X'}
+    query_string_params = {'platformId': 'AIR-AP1141N-A-K9'}
+    response = get_devices_list(headers, query_string_params)
+    print_devices_info(response)

```

Refer to the exhibit. An engineer is comparing two files by using the unified diff format. Which code snippet belongs to the new.py file?

- A. 77 query\_string\_params = {'platformId':  
'AIR-AP1141N-A-K9'}
- B. 21 print(item['id'], item['hostname'])
- C. 24 print(item['id'], item['hostname'],  
item['managementIpAddress'])
- D. 66 # print devices list filtered by  
hostname  
67 print('\nPrinting device list  
filtered by hostname ...')  
68 query\_string\_params = {'hostname':  
'CSR1Kv-01.devnet.local'}  
69 response = get\_devices\_list  
(headers, query\_string\_params)  
70 print\_devices\_info(response)

Answer: A

### NEW QUESTION 118

- (Exam Topic 3)

A developer creates a program in which an object maintains a list of classes based on the observer pattern. The classes are dependent on the object. Whenever the state of the object changes, it notifies the dependent classes directly through callbacks. Which advantage of the observer pattern offers minimum dependencies and maximum flexibility between dependent objects or classes?

- A. tight coupling
- B. cohesion
- C. mediation
- D. loose coupling

Answer: D

### NEW QUESTION 121

- (Exam Topic 3)



/api/access/global/rules

API operations on global access rules.

GETPUTPATCHPOSTDELETE

Implementation Notes

Add a new global access rule.

Parameters

Parameter	Required	Description	Type	Data Type
body	true	Definition of the global access rule to be added.	body	ExtendedACE

Response

Response Content Type application/json

Response Object ExtendedACE

ExtendedACE Model

Field	Value	Description	Constraints
sourceAddress*	object	source address in the ace	None
destinationAddress*	object	destination address in the ace	None
kind*	string	The kind of this resource object.	None
dstSecurity	object	destination security group in the ace	None
dstSecurity. Value	string		None
active*	boolean	shows if the rule is active or inactive, default is active	None
destinationService*	object	destination service in the ace	None
permit*	boolean	shows if the action is permit or deny	None

Refer to the exhibit. Drag and drop the code from the bottom onto the box where the code is missing to complete the function that adds a new global access rule that denies traffic using the Cisco ASA REST API. Not all options are used.

```
import requests as req
def add rule(token, asa IP, dest v4Address):
    data = {
        "destinationAddress": {
            "kind": "IPv4Address",
            "value": dest v4Address
        },
        "destinationService": {
            "kind": "NetworkProtocol",
            "value": "ip"
        },
        ,
        "active": True,
        "sourceAddress": {
            "kind": "AnyIPAddress",
            "value": "any4"
        }
    }
    objectRequestUrl='https://'
    res = req.request(
        json=data,verify=False)
    print("Success.")
else:
    print("Failed")
```

if res.status\_code == 201:

if res.status\_code == 203:

+ asa\_IP + "/api/access/global/rules"

'POST', objectRequestUrl,

"permit": False,

+ asa\_IP = "/access/global/rules"

- A. Mastered  
B. Not Mastered

Answer: A

Explanation:

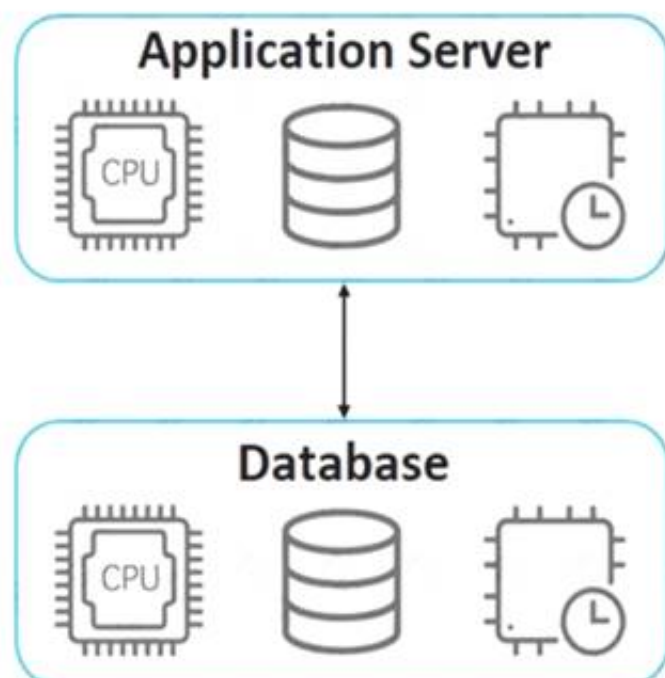
Graphical user interface, text, application, email Description automatically generated

NEW QUESTION 124

- (Exam Topic 3)

Refer to the exhibit.

## Hypervisor



An application must be deployed on a server that has other applications installed. The server resources are to be allocated based on the deployment requirements. The OS for each application must be independent. Which type of deployment is used?

- A. hybrid
- B. virtual machines
- C. containers
- D. bare metal

**Answer:** B

### NEW QUESTION 127

- (Exam Topic 3)

What is a function of the default gateway in a network?

- A. to drop traffic that is destined to the default gateway
- B. to forward traffic to different subnets
- C. to forward traffic to the same subnet
- D. to drop traffic that is not destined to the default gateway

**Answer:** B

### NEW QUESTION 131

- (Exam Topic 3)

Drag and drop the code from the bottom onto the box where the code is missing to obtain a list of network devices by using the Cisco Meraki API. Not all options are used.

```

import requests

url = "https://api.meraki.com/api/v0/ [ ] /{{networkId}}/ [ ] "

payload = {}
headers = {
    'Accept': '*/*'
}

response = requests.request("[ ]", url, headers=headers, data=payload)

print(response.text.[ ] ('utf8'))
    
```

teams networks devices GET POST encrypt encode

- A. Mastered
- B. Not Mastered

**Answer:** A

**Explanation:**

```
import requests

url = "https://api.meraki.com/api/v0/{networks}/{networkId}/{devices}"

payload = {}
headers = {
    'Accept': '*/*'
}

response = requests.request("GET", url, headers=headers, data=payload)

print(response.text.encode('utf8'))
```

teams networks devices GET POST encrypt encode

### NEW QUESTION 132

- (Exam Topic 3)

```
1 import requests
2 def main():
3     def getCreds():
4         user = input('User: ')
5         pwd = Getpass('Pass: ')
6         return (user,pwd)
7
8     def login(ipaddr,user,pwd):
9         url = "https://{ipaddr}/api/aaaLogin.json".format(ipaddr=ipaddr)
10        data = '{"aaaUser":{"attributes":{"name":"%(user)s","pwd":"%(pwd)s"}}}'
11        + '{"pwd":pwd,"user":user}'
12        response = requests.post(url,data=data,verify=False)
13        cookie = response.headers['Set-Cookie']
14        return cookie
15
16    def getstuff(ipaddr,cookie):
17        headers = {"Cookie":cookie}
18        url = "https://{ipaddr}/api/node/class/fvTenant.json".format(ipaddr=ipaddr)
19        response = requests.get(url,headers=headers,verify=False)
20        grouplist = []
21        for x in response.json()["imdata"]:
22            grouplist.append(x["fvTenant"]["attributes"]["name"])
23        return ','.join(grouplist)
24
25    ipaddr = "192.168.255.2"
26    user,pwd = getCreds()
27    token = login(ipaddr,user,pwd)
28    return getstuff(ipaddr,cookie)
29
30 if __name__ == '__main__':
31     result = main()
32     print(result)
```

Refer to the exhibit. Which action does the script perform?

- A. It queries user credentials from Cisco IOS XE devices.
- B. It retrieves device identification from Cisco DNA Center.
- C. It exports SSID information from Meraki dashboard.
- D. It collects group information from ACI.

Answer: D

### NEW QUESTION 133

- (Exam Topic 3)

```
1 URL: https://example.com/restconf/data/Cisco-IOS-XE-native:native/logging/monitor
2 Method: POST
3
4 Headers: ('Content-type': 'application/yang-data+json', 'Accept': 'application/yang-data+json,
5 * application/yang-data.errors+json')
6 Body:
7
8 {
9     "severity": "alerts"
10 }
```

Refer to the exhibit. Which HTTP code is returned after the RESTCONF query is executed?



- A. 201
- B. 204
- C. 302
- D. 304

**Answer:** A

#### NEW QUESTION 135

- (Exam Topic 3)

A developer attempts to refactor and improve the application code. It is noticed that the code contains several pieces of key information that could be a security threat if this code is accessible by those who are not authorized to this data. Which approach addresses the security concerns noticed by the developer?

- A. Host the application code on a machine located in a secure data center.
- B. Utilize environment variables for username and password details.
- C. Rely on the security teams' goodwill to not give access to those who do not need it.
- D. Move the hardware that the application is deployed on to a secure location.

**Answer:** B

#### NEW QUESTION 139

- (Exam Topic 2)

What is a benefit of using functions in the code for the development process?

- A. better user experience in the end product
- B. improves code performance
- C. easier to compile the code
- D. fester code development

**Answer:** D

#### Explanation:

<https://www.techwalla.com/articles/the-advantages-disadvantages-of-using-functions-procedures-in-computer-p>

#### NEW QUESTION 142

- (Exam Topic 3)

```
api_endpoint = f"https://veryusefulapi/v2/authenticate"

headers = {
    "Authorization": "Basic YWRtaW46c3VwZXJzZWNyZXQ="
    "Accept": "application/json"
}

req = requests.get(api_endpoint, headers=headers)
```

Refer to the exhibit. A developer is part of a team that is working on an open-source project in which source code is hosted in a public GitHub repository. While the application was built, security concerns were addressed by encrypting the credentials on the server. After a few months, the developer realized that a hacker managed to gain access to the account. The exhibit contains part of the source code for the login process. Why was the attacker able to access the developer's account?

- A. The encoded credentials were available in the source code.
- B. The application was not encrypting the communication with the server.
- C. The credentials were encrypted in the source code.
- D. An SSL certificate was used instead of the TLS protocol to authenticate.

**Answer:** A

#### NEW QUESTION 146

- (Exam Topic 3)

Refer to the exhibit.



```
module ietf-interface {
  namespace "urn:ietf:params:xml:ns:yang:ietf-interfaces";
  prefix if;
  import ietf-yang-types {
    prefix yang;
  }
  container interfaces-state {
    list interface {
      key "name";
      leaf name {
        type string;
      }
      leaf admin-status {
        type enumeration {
          enum up {
            value 1;
          }
          enum down {
            value 2;
          }
          enum testing {
            value 3;
          }
        }
      }
      leaf if-index {
        type int32 {
          range "1..2147483647"
        }
      }
      container statistics {
        leaf in-octets {
          type yang:counter64;
        }
        leaf in-unicast-pkts {
          type yang:counter64;
        }
      }
    }
  }
}
```

Which XML snippet has interface information that conforms to the YANG model?

A. Text Description automatically generatedB.

```
<interfaces-state
xmlns="urn:ietf:params:xml:ns:yang:ietf-interfaces"
xmlns:if="urn:ietf:params:xml:ns:yang:ietf-interfaces">
  <interface name="GigabitEthernet1">
    <admin-status>1</admin-status>
    <if-index>1</if-index>
    <statistics>
      <in-octets>408164820</in-octets>
      <in-unicast-pkts>728061</in-unicast-pkts>
    </statistics>
  </interface>
</interfaces-state>
```

Text

Description automatically generated

```
<interfaces-state
xmlns="urn:ietf:params:xml:ns:yang:ietf-interfaces"
xmlns:if="urn:ietf:params:xml:ns:yang:ietf-interfaces">
  <interface>
    <name>GigabitEthernet1</name>
    <admin-status>up</admin-status>
    <if-index>1</if-index>
    <in-octets>408164820</in-octets>
    <in-unicast-pkts>728061</in-unicast-pkts>
  </interface>
</interfaces-state>
```

B. Text Description automatically generated

```
<interfaces-state
xmlns="urn:ietf:params:xml:ns:yang:ietf-interfaces"
xmlns:if="urn:ietf:params:xml:ns:yang:ietf-interfaces">
  <interface>
    <name>GigabitEthernet1</name>
    <admin-status>up</admin-status>
    <if-index>1</if-index>
    <statistics>
      <in-octets>408164820</in-octets>
      <in-unicast-pkts>728061</in-unicast-pkts>
    </statistics>
  </interface>
</interfaces-state>
```

C. Text Description automatically generated

```
<interfaces-state
xmlns="urn:ietf:params:xml:ns:yang:ietf-interfaces"
xmlns:if="urn:ietf:params:xml:ns:yang:ietf-interfaces">
  <interface>
    <name>GigabitEthernet1</name>
    <admin-status>1</admin-status>>
    <if-index>1</if-index>
    <statistics>
      <in-octets>408164820</in-octets>
      <in-unicast-pkts>728061</in-unicast-pkts>
    </statistics>
  </interface>
</interfaces-state>
```

**Answer:** C

**Explanation:**

<https://datatracker.ietf.org/doc/id/draft-ietf-netmod-interfaces-cfg-01.txt> <admin-status>up</admin-status>

**NEW QUESTION 149**

- (Exam Topic 3)

What are two benefits of using classes over functions when writing applications? (Choose two.)

- A. improved readability
- B. increased compatibility
- C. variable reusability
- D. increased performance
- E. code organization

**Answer:** AC

**NEW QUESTION 150**

- (Exam Topic 2)

Which configuration management tool has an agentless capability?

- A. Chef
- B. Puppet
- C. Ansible
- D. CFEngine

**Answer:** C

**NEW QUESTION 154**

- (Exam Topic 2)

In test-driven development, what are two of the green bar patterns? (Choose two.)

- A. another test
- B. break
- C. triangulate
- D. starter test
- E. fake it

**Answer:** CE

#### Explanation:

<https://blog.baudson.de/blog/test-driven-development-green-bar-patterns>

#### NEW QUESTION 159

- (Exam Topic 2)

Refer to the exhibit.

```
API Documentation:

Integrations are how you request permission to invoke the Webex REST API on behalf of another Webex Teams user. To do this in a secure way the API supports the OAuth 2 standard which allows third-party integrations to get a temporary access token for authenticating API calls instead of asking users for their password.

Script:
01 import requests
02
03 base_url = "https://webexapis.com/v1"
04 header = {"Key": "Value"}
05
06 url = "{}/{}/".format(base_url, "/teams")
07 print(requests.get(url, headers=header).status_code)
```

A developer creates a Python script that queries Cisco Webex. When the script is executed, a 401 code is returned. After troubleshooting, the developer discovers that the service is missing privileges. Which change to the header in line 4 of the script results in the code 200?

A)

```
header = {"Authentication": "Bearer YOUR_TOKEN"}
```

B)

```
header = {"Authentication Bearer" : "YOUR_TOKEN"}
```

C)

```
header = {"Authorization" : "Bearer YOUR_TOKEN"}
```

D)

```
header = {"Authorization Bearer" : "YOUR_TOKEN"}
```

- A. Option A
- B. Option B
- C. Option C
- D. Option D

Answer: C

#### NEW QUESTION 162

- (Exam Topic 2)

What is a benefit of a model-driven approach for infrastructure automation?

- A. enforces the generation of all automation scripts through the modeling environment
- B. provides a small learning curve and helps system administrators with limited coding experience
- C. ensures that system administrators gain a good understanding of coding and expand their experience and capabilities
- D. enables a user to understand a declarative language to translate the model into an actionable script

Answer: A

#### NEW QUESTION 164

- (Exam Topic 2)

Refer to the exhibit.

```
1  #!/bin/bash
2  apt install nginx
3  export AVAILABLE_SITES_DIR = '/etc/nginx/sites-available'
4  export ENABLED_SITES_DIR = '/etc/nginx/sites_enabled'
5  cd /opt/nginx
6  cat sites.txt | while read site;
7      do
8          cp template.conf "$AVAILABLE_SITES_DIR/$site";
9          ln -s "$AVAILABLE_SITES_DIR/$site" "$ENABLED_SITES_DIR";
10         chown www-data:www-data "$AVAILABLE_SITES_DIR/$site";
11     done
```

An engineer must configure a load balancer server. The engineer prepares a script to automate workflow by using Bash. The script install the nginx package, moves to the /optAtginx directory, and reads the sites M We (or further processing Based on the script workflow, which process is being automated within the loop by using the information mi sites txt?

- A. creating a new Me Based on template .conf in the /etc/ngin/sites\_enabled directory for each lie in the sites txt fil
- B. and then changing the file execution permission.
- C. creating a Me per each the in sites txt with the information in template con
- D. creating a link for the previously created fil



- E. and then changing the ownership of the created files
- F. using the content of the file to create the template conf fil
- G. creating a link from the created file to the/etc/nginx/files.enable
- H. and then changing the file execution permissions.
- I. using the information in the file to create a set of empty files in the /etchginx/sites\_enabled directory and then assigning the owner of the file.

Answer: B

#### NEW QUESTION 167

- (Exam Topic 2)

What is a benefit of using edge computing in an IoT implementation?

- A. low cost in network design
- B. low network design complexity
- C. high availability for network components
- D. high speed in data processing

Answer: D

#### NEW QUESTION 172

- (Exam Topic 2)

What is a capability of an agentless configuration management system?

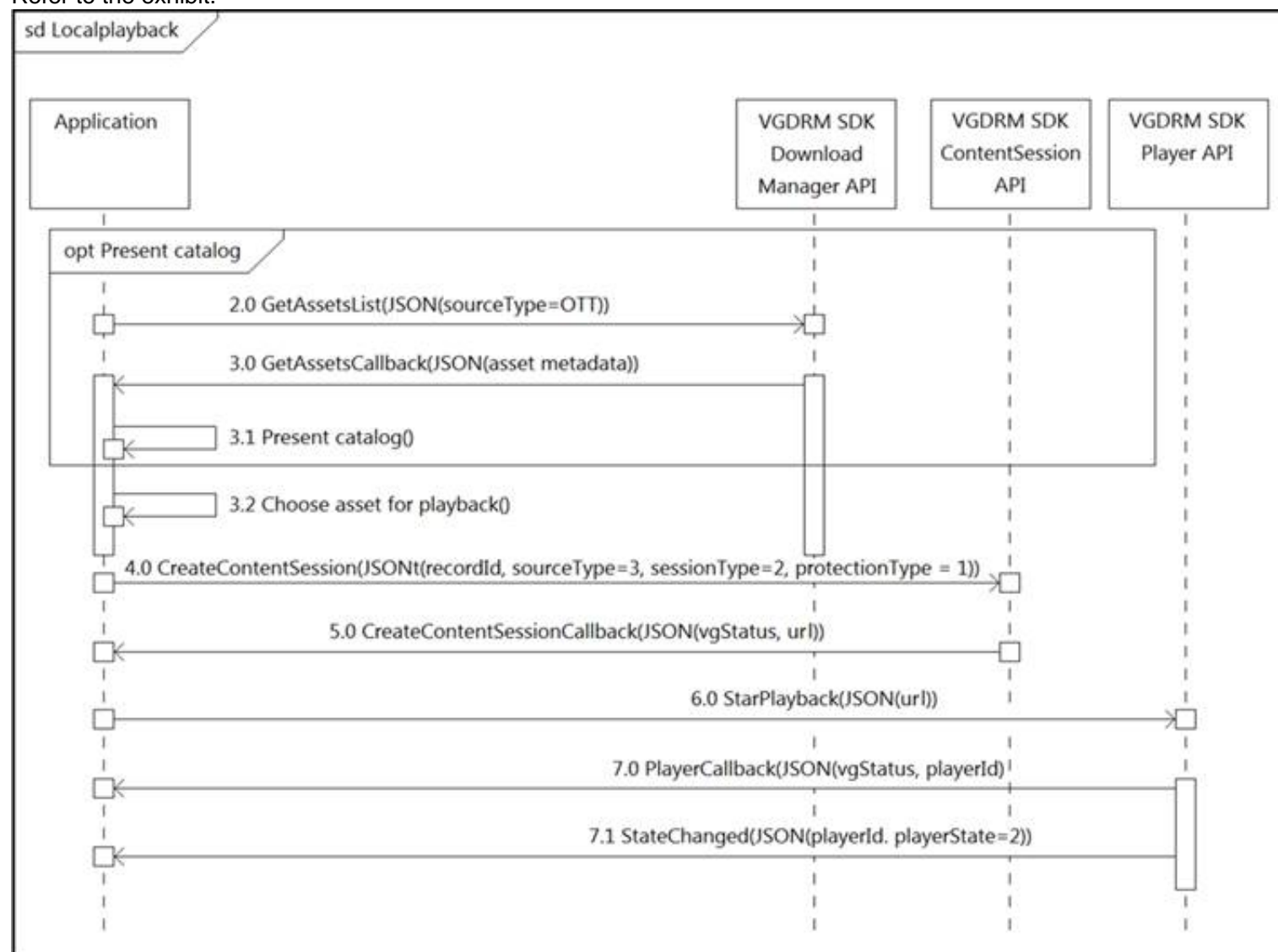
- A. It requires managed hosts to have an interpreter for a high-level language such as Python or Ruby.
- B. It requires managed hosts to connect to a centralized host to receive updated configurations.
- C. It uses compiled languages as the basis of the domain-specific language to interface with managed hosts.
- D. It uses existing protocols to interface with the managed host.

Answer: D

#### NEW QUESTION 177

- (Exam Topic 2)

Refer to the exhibit.



What do all the calls shown in the sequence diagram have in common?

- A. All the calls are optional.
- B. All the calls are asynchronous.
- C. All the calls are synchronous.
- D. All the calls depend on the catalog.

Answer: D

#### NEW QUESTION 180

- (Exam Topic 2)

Into which type of Python data structure should common data formats be parsed?



- A. sequence
- B. set
- C. dictionary
- D. list

**Answer:** C

#### NEW QUESTION 184

- (Exam Topic 2)

A developer has created a new image to use in a Docker build and has added a tag for the image by using the command:

```
$ docker tag 84fe411926287 local/app:0.4
```

Which command must be executed next to build the Docker image using the tag?

- A. \$ docker build -p local/app:0.4
- B. \$ docker run -t local/app:0.4
- C. \$ docker run -p local/app:0.4
- D. \$ docker build -t local/app:0.4

**Answer:** D

#### NEW QUESTION 188

- (Exam Topic 2)

Which protocol runs over TCP port 22?

- A. SSH
- B. HTTP
- C. Telnet
- D. NETCONF

**Answer:** A

#### NEW QUESTION 191

- (Exam Topic 2)

Which protocol runs over TCP port 23?

- A. SSH
- B. NETCONF
- C. HTTP
- D. Telnet

**Answer:** D

#### NEW QUESTION 192

- (Exam Topic 2)

Refer to the exhibit.

```

1 import requests
2 import json
3
4 BASE_URL = "https://<IP Address>"
5 FIRST_URL = "/dna/intent/api/v1/network-device"
6 SECOND_URL = "/dna/intent/api/v1/network-device-poller/cli/read-request"
7 THIRD_URL = "/dna/intent/api/v1/task/{task_id}"
8 FOURTH_URL = "/dna/intent/api/v1/file/{file_id}"
9
10 headers = {"X-Auth-Token": "TOKEN", "Content-Type": "application/json"}
11
12 params = {"platformId": "C9500-40X"}
13 response = requests.get(BASE_URL + FIRST_URL, headers=headers, params=params)
14 devices = []
15 for device in response.json()["response"]:
16     devices.append(device["id"])
17
18     payload = {
19         "commands": ["show version", "show ip int brief"],
20         "deviceUuids": devices,
21         "timeout": 0,
22     }
23 response = requests.post(BASE_URL + SECOND_URL, data=json.dumps(payload),
24     · headers=headers)
25 task_id = response.json()["response"]["taskId"]
26 response = requests.get(BASE_URL + THIRD_URL.format(task_id=task_id),
27     · headers=headers)
28 progress_json = json.loads(response.json()["response"]["progress"])
29 file_id = progress_json("fileId")
30 response = requests.get(BASE_URL + FOURTH_URL.format(file_id=file_id),
31     · headers=headers)
32 file_json = response.json()
33 for cmd in file_json:
34     print(file_json[cmd]["commandResponses"]["SUCCESS"]["show ip int brief"])

```

A network engineer must collect information from the network using Cisco DNA Center APIs. The script must query for the devices with 'platformId' 'C9540-x' and then send commands to be executed. Which process is automated by the Python script?

- A. results gathering of the show version and show ip int brief commands
- B. output of show ip int brief command on devices of type C9500-40X
- C. execution information of the show version and show ip int brief commands
- D. list of executed commands on C9500-40X and the information of show ip int brief command

**Answer: B**

#### NEW QUESTION 193

- (Exam Topic 2)

Refer to the exhibit.

```

import requests
from requests.auth import HTTPBasicAuth
from config import url, username, password
response = requests.login(url, auth=HTTPBasicAuth (username, password), verify=False)
print response.status_code

```

The script returns an output of 401. To use the supplied URL, an HTTP GET request must be sent with an Authorization header. The header value is a Base64 encoded concatenation of the username and password. Which action must be taken to return an output of 200?

- A. Change the verify=False setting in the request to verify=True to enable HTTP Basic authentication
- B. Modify the method from LOGIN to GET and supply the username ;password value as JSON payload
- C. Verify that the username and password values imported from the configuration file are still valid.
- D. Insert an Authorization header with the values username password from the supplied configuration file.

**Answer: C**

#### NEW QUESTION 194

- (Exam Topic 2)

Access to the management interface of devices must be restricted by using SSH and HTTPS. Which two ports must be included in the ACLs for the protocols to work? (Choose two.)

- A. 22
- B. 23
- C. 80
- D. 443
- E. 880

**Answer:** AD

#### NEW QUESTION 195

- (Exam Topic 2)

A company wants to accelerate the adoption of technologies that will simplify its operations. Staff have different skill levels and are looking for a single site to find easy-to-consume beginner, intermediate, and advanced multidomain use cases. Which site should be used?

- A. DevNet Ecosystem Exchange
- B. DevNet Automation Exchange
- C. DevNet Creations
- D. DevNet Support Forum

**Answer:** D

#### NEW QUESTION 200

- (Exam Topic 2)

What are two considerations when selecting the "best route" for a network device to reach its destination? (Choose two.)

- A. MAC address
- B. metrics
- C. administrative distance
- D. IP address
- E. subnet mask

**Answer:** BC

#### NEW QUESTION 202

- (Exam Topic 2)

Before which process is code review performed when version control is used?

- A. Branching code
- B. Merge of code
- C. Checkout of code
- D. Committing code

**Answer:** D

#### NEW QUESTION 203

- (Exam Topic 2)

What is the purpose of a MAC address on a network device?

- A. unique network address that identifies the network interface of a device
- B. unique network interlace address that is provided by the DHCP server
- C. unique hardware address that identifies the network interface of a device
- D. unique hardware interface address that is provided by the central switch

**Answer:** C

#### NEW QUESTION 208

- (Exam Topic 2)

What is the difference between YAML and JSON data structure?

- A. YAML uses spaces; JSON uses parentheses
- B. YAML uses indentation; JSON uses brackets and braces
- C. YAML uses brackets and braces; JSON uses indentation
- D. YAML uses parentheses; JSON uses spaces

**Answer:** A

#### NEW QUESTION 210

- (Exam Topic 2)

Which Cisco platform provides organization-wide automation, security, policy enforcement, any agility across wired and wireless networks?

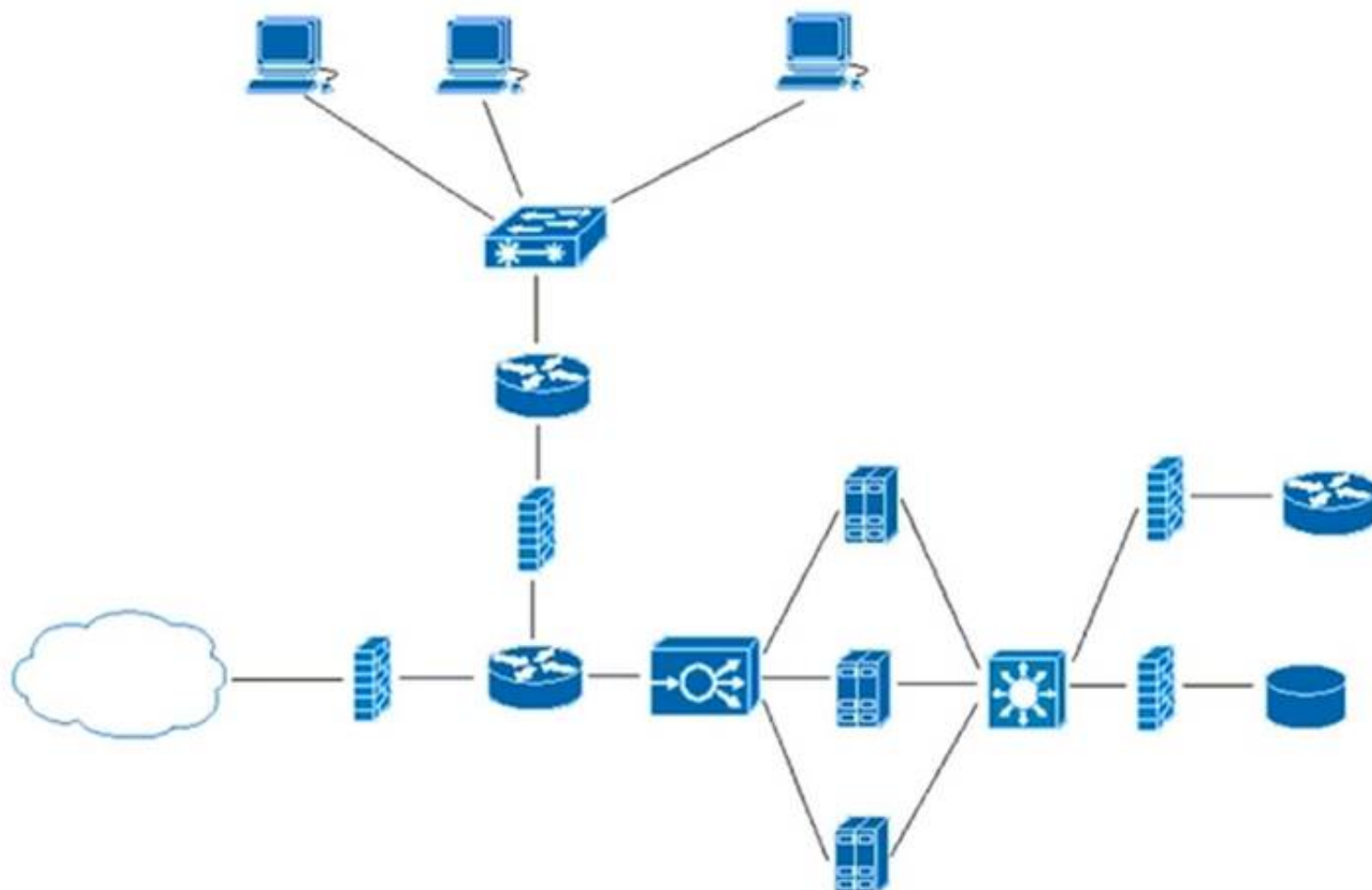
- A. Cisco ACI
- B. Cisco DNA Center
- C. Cisco Umbrella
- D. Cisco SD-WAN

**Answer:** B

#### NEW QUESTION 214

- (Exam Topic 2)





Refer to the exhibit. What does the load balancer enable in the network topology?

- A. hosted application to access Internet services
- B. external requests to be routed to the application servers
- C. workstations to access the Internet
- D. application to access the database server

Answer: C

#### NEW QUESTION 215

- (Exam Topic 2)

Refer to the exhibit.

```

1 #import dnac sdk
2 from dnacentersdk import DNACenterAPI
3 #connection to dnac
4
5 username = 'user1'
6 password = 'secret'
7 base_url = 'https://192.168.1.1'
8
9 dnac = DNACenterAPI(username=username, password=password, base_url=base_url,
10 # version='1.3.3', verify=False)
11 # Get list of ports on device using get all interfaces API call
12 port_list_1 = [item['portName'] for item in
13 # dnac.devices.get_all_interfaces()['response']
14 # if 'da4606c3-63ad-4ed4-8f35-6bfec7c2df04' in
15 # item['deviceId']]
16
17 # Sort list items
18 port_list_1.sort()
19 # Check the number of ports on the device
20 print(f'The list of interfaces contains {len(port_list_1)} items.')
21
22 # Output
23 # The list of interfaces contains 38 items.
24
25 # Get list of interfaces using the get interface info by device id api call
26 port_list_2 = [item['portName'] for item in
27 # dnac.devices.get_interface_info_by_id('da4606c3-63ad-4ed4-8f35-
28 # 6bfec7c2df04')['response']]
29
30 # Sort list items
31 port_list_2.sort()
32 # Check the number of ports on the device
33 print(f'The list of interfaces contains {len(port_list_2)} items.')
34
35 # Output
36 # The list of interfaces contains 54 items.

```

An engineer writes a Python script that uses two different API calls to query Cisco DNA Center for the number of interfaces on a device. The engineer notices that the two API calls produce different results. Why are fewer interfaces returned for the same device when the 'get\_all\_interfaces' API call is used?

- A. times out
- B. rate limit
- C. pagination
- D. invalid password

**Answer:** C

#### NEW QUESTION 216

- (Exam Topic 2)

In the test-driven development model, what is changed after a test fails?

- A. test
- B. schedule
- C. project requirements
- D. code

**Answer:** D

#### Explanation:

Reference:

<https://www.guru99.com/test-driven-development.html#:~:text=In%20simple%20terms%2C%20test%20cases,c>

#### NEW QUESTION 220

- (Exam Topic 2)

Which tool is used to block all traffic to the domain by using a single API call?

- A. Cisco ISE
- B. Cisco Firepower
- C. Cisco AMP
- D. Cisco Umbrella

**Answer:** B

#### NEW QUESTION 224

- (Exam Topic 2)

How does a synchronous API request differ from an asynchronous API request?

- A. clients receive responses with a task id for further processing
- B. clients subscribe to a webhook for operation results
- C. clients are able to access the results immediately
- D. clients poll for the status of the execution of operations

**Answer:** C

#### NEW QUESTION 229

- (Exam Topic 2)

What are two benefits of using VLANs? (Choose two.)

- A. limits the devices that can join the network
- B. segments the broadcast domain
- C. extends the broadcast domain
- D. allows all network devices to be accessible from any host on the network
- E. enables the logical grouping of devices that belong to different Layer 2 devices

**Answer:** BE

#### NEW QUESTION 233

- (Exam Topic 2)

class Native.Interface.FastEthernet

Bases: Entity

Class Hierarchy: Native Interface FastEthernet

This class represents configuration data.

FastEthernet IEEE 802.3

name(key)

type: str

pattern: ([0-9]/) ([0-9]/) ([1-3][0-9][4][0-8] ([0-9]) \ ([0-9]+)?

description

Interface specific description

type: str

pattern: \*

flowcontrol

Configure flow operation

type: Flowcontrol

isis

IS-IS commands

type: Isis

keepalive

Enable keepalive

type: bool

keepalive\_settings

type: KeepaliveSettings

Refer to the exhibit. Drag and drop the code snippets from the bottom to the blanks in the code to enable keepalive for the FastEthernet 2/0 interface. Not all options are used.

```

from ydk.services import CRUDService
from ydk.providers import NetconfServiceProvider as nc
from ydk.models.cisco_ios_xe import Cisco IOS XE native as model
ip = '10.10.20.48'
prtc1 = 'ssh'
user = 'developer'
psw = 'P@s$W0rD'
port = 830
provider = nc(address=ip, port=port, username=user, password=psw, protocol=prtc1)
crud = CRUDService()

interface.name = '2/0'

if interface data:
    print('Keepalive is enabled.')
else:
    print('Keepalive is not enabled.')

```

- interface\_data = crud.update(provider, interface)
- interface.keepalive = True
- interface\_data = crud.read(provider, interface)
- interface = model.Native.Interface.FastEthernet()
- interface.FastEthernet.keepalive\_settings.keepalive = True
- interface = model.Native.Interface()

- A. Mastered  
 B. Not Mastered

Answer: A

Explanation:



```
from ydk.services import CRUDService
from ydk.providers import NetconfServiceProvider as nc
from ydk.models.cisco ios xe import Cisco IOS XE native as model
ip = '10.10.20.48'
prtc1 = 'ssh'
user = 'developer'
psw = 'P@s$W0rD'
port = 830
provider = nc(address=ip, port=port, username=user, password=psw, protocol=prtc1)
crud = CRUDService()

interface = model.Native.Interface.FastEthernet()

interface.name = '2/0'

interface.keepalive = True

interface_data = crud.read(provider, interface)

if interface_data:
    print('Keepalive is enabled.')
else:
    print('Keepalive is not enabled.')
```

```
interface_data = crud.update(provider, interface)
```

```
interface.FastEthernet.keepalive_settings.keepalive = True
```

```
interface = model.Native.Interface()
```

#### NEW QUESTION 234

- (Exam Topic 2)

Why is refactoring done during test-driven development?

- A. to enable larger objects and longer methods
- B. to improve maintainability and readability
- C. to ensure that the previous uses of the objects are explained
- D. to ensure the duplication of essential code

**Answer:** B

#### NEW QUESTION 237

- (Exam Topic 2)

A company is adopting DevOps as part of an internal transformation, and is reviewing the success of the first deployments. Developers and engineers are working together to resolve any resulting issues. However, this new way of working has increased overhead, and the team is finding it difficult to complete releases in time. Which area of the CALMS framework must the company target for improvement?

- A. Collaboration
- B. Lean
- C. Sharing
- D. Measurement

**Answer:** B

#### Explanation:

Reference: <https://blog.sonatype.com/principle-based-devops-frameworks-calms>

#### NEW QUESTION 242

- (Exam Topic 2)

Where is an IP packet routed if the packet does not match any routes in the routing table?

- A. firewall
- B. load balancer
- C. central switch
- D. default gateway

**Answer:** D

#### NEW QUESTION 247

- (Exam Topic 2)

Refer to the exhibit.

Returns the wireless lan controller info with given device ID:

```
{
  "response": {
    "adminEnabledPorts": [ 0 ],
    "apGroupName": "string",
    "deviceId": "string",
    "ethMacAddress": "string",
    "flexGroupName": "string",
    "id": "string",
    "instanceTenantId": "string",
    "instanceUuid": "string",
    "lagModeEnabled": true,
    "netconfEnabled": true,
    "wirelessLicenseInfo": "ADVANTAGE",
    "wirelessPackageInstalled": true
  },
  "version": "string"
}
```

Drag and drop the code from the bottom onto the blanks in the code to construct a cURL command using the Cisco DNA Center API. which will provide the details of a WLAN controller with Id af397748444. Not at options are used.

#### Answer Area

```
curl -L --request GET \
--url https://dna/intent/api/v1/ / / \
--header 'Content-Type: application/json' \
--header 'Accept:application/json'
```

network-device

id

wireless

wireless-info

controller

details

- A. Mastered
- B. Not Mastered

**Answer:** A

#### Explanation:

Diagram Description automatically generated

#### NEW QUESTION 249

- (Exam Topic 2)

Refer to the exhibit.

```
FROM nginx

ARG DELAY="30"
ENV INITIAL_DELAY=${DELAY}

ENTRYPOINT ["/bin/sh"]

CMD ["-c", "/bin/sleep ${INITIAL_DELAY} && nginx -g 'daemon off;']
```

Which command, including arguments, is executed when the container starts?

- A. /bin/sh -c "/bin/sleep 30 && nginx -g 'daemon off;'"
- B. /bin/sh -c "/bin/sleep 10 && nginx -g 'daemon off;'"
- C. /bin/bash -c "/bin/sleep 30 && nginx -g 'daemon off;'"
- D. /bin/sh -c "/bin/sleep 30" && nginx -g 'daemon off;'

**Answer:** A

#### NEW QUESTION 254

- (Exam Topic 2)

Which HTTP response status code means “Forbidden”?

- A. 500
- B. 401
- C. 403
- D. 502

**Answer:** C

**Explanation:**

Reference: <https://developer.mozilla.org/en-US/docs/Web/HTTP/Status/403>

#### NEW QUESTION 259

- (Exam Topic 2)

An engineer must configure Cisco Nexus devices and wants to automate this workflow. The engineer enables the Cisco NX-OS REST API to configure the devices by using an Ansible playbook. Before running the code, which resource must be used to verify that the code works correctly?

- A. Cisco NX-OS SDK
- B. Cisco Learning Labs
- C. Cisco Code Exchange
- D. Cisco Modeling Labs

**Answer:** A

#### NEW QUESTION 260

- (Exam Topic 2)

Which advantage does the agile process offer compared to waterfall software development?

- A. to view the full scope of end-to-end work
- B. to have each phase end before the next begins
- C. to fix any issues at the end of the development cycle
- D. to add or update features with incremental delivery

**Answer:** D

#### NEW QUESTION 263

- (Exam Topic 2)

Refer to the exhibit.

```
>>> response_data = requests.get(base_url + request_url, cookies=cookies)
Traceback (most recent call last):
  File "<stdin>", line 1, in <module>
NameError: name 'requests' is not defined
>>>
```

A Python code has been written to query a device. The executed code results in the error shown. Which action resolves the problem?

- A. import json
- B. requests("GET", base\_url + request\_url, cookies=cookies)
- C. pip install requests
- D. import requests

**Answer:** D

#### NEW QUESTION 266

- (Exam Topic 2)

Several teams at a company are developing a new CRM solution to track customer interactions with a goal of improving customer satisfaction and driving higher revenue. The proposed solution contains these components:

- MySQL database that stores data about customers
- HTML5 and JavaScript UI that runs on Apache
- REST API written in Python

What are two advantages of applying the MVC design pattern to the development of the solution? (Choose two.)

- A. to enable multiple views of the same data to be presented to different groups of users
- B. to provide separation between the view and the model by ensuring that all logic is separated out into the controller
- C. to ensure data consistency, which requires that changes to the view are also made to the model
- D. to ensure that only one instance of the data model can be created
- E. to provide only a single view of the data to ensure consistency

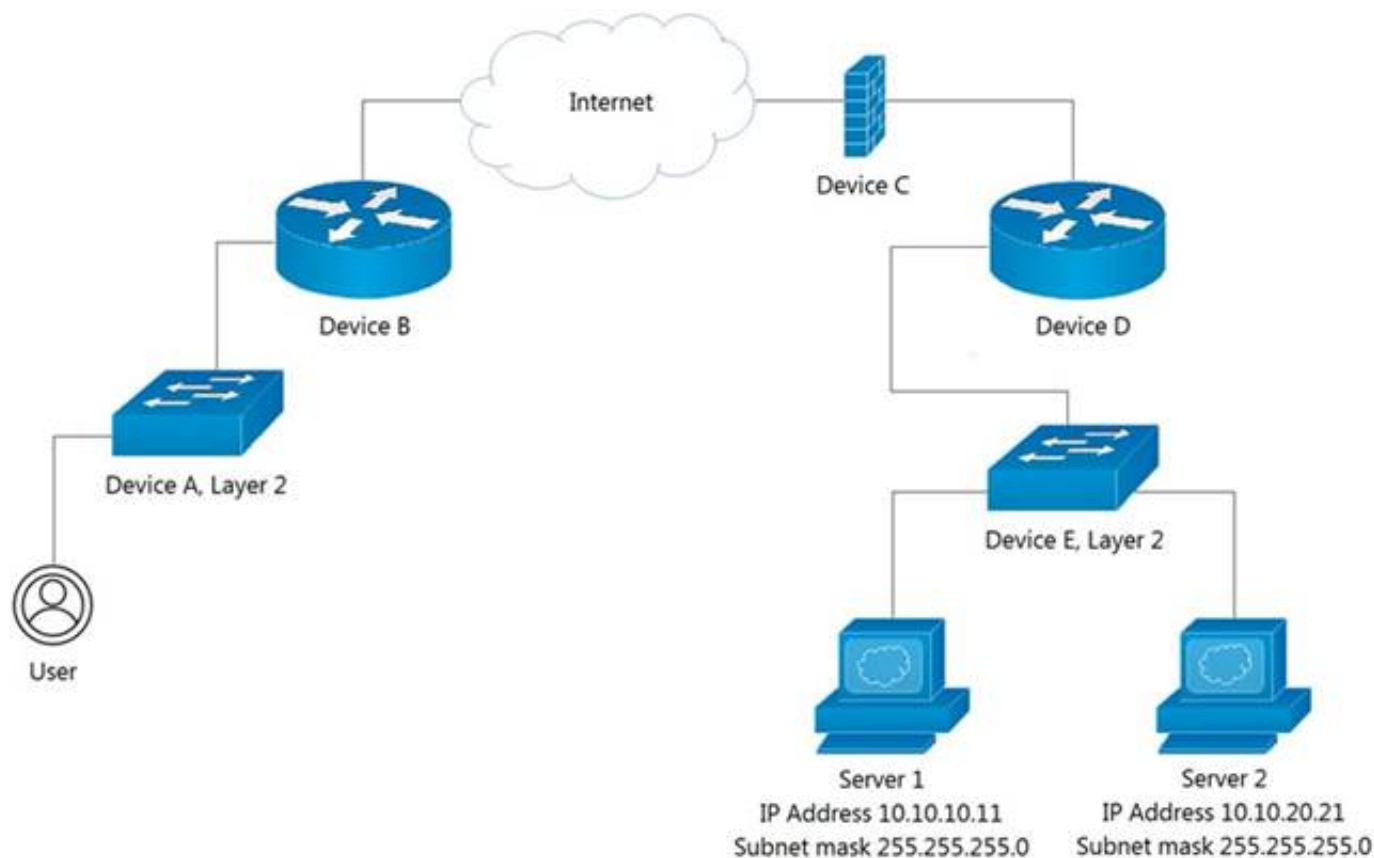
**Answer:** BD

#### NEW QUESTION 270

- (Exam Topic 2)

Refer to the exhibit.





Which device limits traffic between server 1 and server 2?

- A. Device B
- B. Device C
- C. Device D
- D. Device E

**Answer: D**

#### NEW QUESTION 273

- (Exam Topic 2)

A developer is working on a feature for a new application. The changes in the existing branch named 'feat00304' must be integrated into a single commit with the current working primary branch named 'prodapp411926287'. Which git command must be used?

- A. git rebase --merge feat00304
- B. git merge --squash feat00304
- C. git push --rebase feat00304
- D. git checkout --squash feat00304

**Answer: B**

#### NEW QUESTION 277

- (Exam Topic 2)

Refer to the exhibit.

```

1  - hosts: servers
2    tasks:
3
4    - name: task1
5      apt:
6        name: apache2
7        state: absent
8
9    - name: task2
10     apt:
11       name: nginx
12       state: present
13
14    - name: task3
15     apt:
16       name: "*"
17       state: latest
  
```

A developer must check packages on web load balancers that use nginx packages. The developer updates the servers as required in Ansible inventory and prepares an Ansible playbook to automate this workflow on related servers. Which process is being automated by the Ansible playbook?

- A. verifying that nginx is installed only if apache2 is unavailable on the system, and then updating all the other packages
- B. verifying, without installing, that apache2 is unavailable and that nginx is installed, and then updating the repository to the latest version
- C. uninstalling the apache2 server, installing the nginx server, and then updating all the packages to the latest version
- D. installing nginx, uninstalling apache2, and then verifying that the package repository is at the latest version

**Answer:** B

#### NEW QUESTION 279

- (Exam Topic 2)

What is a benefit of model-driven programmability?

- A. It addresses the static architecture of traditional networks being decentralized and complex.
- B. By modeling data, it ensures that vast quantities of data are usable for monitoring.
- C. It provides a programmatic and standards-based way of writing configurations to any network device.
- D. It simplifies management and operations by decoupling the networking hardware from its control mechanism.

**Answer:** D

#### NEW QUESTION 284

- (Exam Topic 2)

Which implementation creates a group of devices on one or more LANs that are configured to communicate as if they were attached to the same wire?

- A. WLAN
- B. VLAN
- C. IPsec
- D. HSRP

**Answer:** B

#### NEW QUESTION 288

- (Exam Topic 2)

Refer to the exhibit.

```
$ sh script.sh
Traceback (most recent call last):
  File "script.py", line 2, in <module>
    api = WebexTeamsAPI()
  File "/opt/.venv/pyvenv35/lib/python3.5/site-packages/webexteamssdk/api/__init__.py", line 112,
in __init__
    "You must provide a Webex Teams access token to interact with "
webexteamssdk.exceptions.AccessTokenError: You must provide a Webex Teams access token to interact
with the Webex Teams APIs, either via a WEBEX_TEAMS_ACCESS_TOKEN environment variable or via the
access_token argument.
$
$
$ cat script.sh
#!/bin/bash

python script.py
$
```

Which line must be included in the Bash script for the Python code to succeed?

- A. define WEBEX\_TEAMS\_ACCESS\_TOKEN=your\_access\_token\_here
- B. export WEBEX\_TEAMS\_ACCESS\_TOKEN=your\_access\_token\_here
- C. set WEBEX\_TEAMS\_ACCESS\_TOKEN=your\_access\_token\_here
- D. WEBEX\_TEAMS\_ACCESS\_TOKEN=your\_access\_token\_here

**Answer:** B

#### NEW QUESTION 290

- (Exam Topic 2)

Refer to the exhibit.

```
<rpc message-id="101" xmlns="urn:ietf:params:xml:ns:Netconf:base:1.0">
  <get-conflg>
    <source>
      <running/>
    </source>
    <filter>
      <interfaces xmlns=" urn:ietf:params:xml:ns:yang:ietf-interfaces">
        <interface>
          <name/>
        </interface>
      </interfaces>
    </filter>
  </get-conflg>
</rpc>
```

A network engineer uses model-driven programmability to monitor and perform changes on the network. The network engineer decides to use the NETCONF RPC message to complete one of their tasks. What is accomplished by sending the RPC message?

- A. The running-config of the device is returned.
- B. The name of each interface is reset to a default name.
- C. All the YANG capabilities supported by the device are returned.
- D. A list of interface names is returned.

**Answer:** D

#### NEW QUESTION 292

- (Exam Topic 2)

What is a benefit of organizing into modules?

- A. improves collaboration of the development team
- B. makes it easier to deal with large and complex systems
- C. enables the code to be broken down into layers
- D. enables the inclusion of more programming languages in the code

**Answer:** B

#### Explanation:

From Wikipedia ([https://en.wikipedia.org/wiki/Modular\\_programming](https://en.wikipedia.org/wiki/Modular_programming)) "Modular programming is closely related to structured programming and object-oriented programming, all having the same goal of facilitating the construction of large software programs and systems by decomposition into smaller pieces."

#### NEW QUESTION 295

- (Exam Topic 2)

A developer created a new secure API and is testing the functionality locally. The API was added to a container for further testing, and other team members and applications need to connect to the API. Which command exposes the API in the container as port 8443 and allows connections external to the host?

- A. docker run -p 127.0.0.1:80:8443/tcp myapiservice
- B. docker run -p 0.0.0.0:443:8443/tcp myapiservice
- C. docker run -p 0.0.0.0:8443:443/tcp myapiservice
- D. docker run -p 127.0.0.1:443:8443/tcp myapiservice

**Answer:** C

#### NEW QUESTION 300

- (Exam Topic 2)

What are two key capabilities of Cisco Finesse? (Choose two.)

- A. Finesse includes an RPC API that enables the development of custom gadgets.
- B. Agents access Finesse from a browser without needing to install or configure anything on the client machine.
- C. Finesse automatically collects telemetry data
- D. An OpenDNS utility is preconfigured and ready to use on Finesse.
- E. Gadget containers provide a seamless experience in a single user interface.

**Answer:** BE

#### NEW QUESTION 301

- (Exam Topic 1)

What should a CI/CD pipeline aim to achieve?

- A. to allow manual testing before deployment
- B. to require minimal manual interaction
- C. to support new deployments on a fixed monthly schedule
- D. to provide a documented process for feedback

**Answer:** A



### NEW QUESTION 304

- (Exam Topic 2)

Refer to the exhibit.

POST https://webexapis.com/v1/teams

Params Authorization Headers (9) Body Pre-request Script Tests Settings

Headers 8 hidden

KEY	VALUE	DESCRIPTION
Authorization	Bearer OTVjNDk5ZGQtNDc5Yi00MwZGEtZGINDYNzdh_PF84_consumer	

Body

```
1 {
2   "team": "cisco"
3 }
4
```

Status: 400 Bad Request Time: 173 ms Size: 514 B

Body Cookies Headers (9) Test Results

Pretty Raw Preview Visualize JSON

```
1 {
2   "message": "The request could not be understood by the server due to malformed syntax.",
3   "errors": [
4     {
5       "description": "The request could not be understood by the server due to malformed syntax."
6     }
7   ],
8   "trackingId": "ROUTER_5FBACE02-90AE-01BB-6DE-AC12DF566D6E"
9 }
```

A developer wants to create a room named cisco through Webex API. The developer prepares the request by putting an API token inside the authorization header; however, the given HTTP call returns error code 400. How must the call parameters be changed to ensure a valid response?

- A. Replace the team body parameter with the name body parameter.
- B. Replace cisco with a valid name for a team.
- C. Change the token in the header with the authorization token.
- D. Change the HTTP method of the call to PUT.

Answer: A

### NEW QUESTION 308

- (Exam Topic 1)

Refer to the exhibit.

For CLI commands that support XML, the `clid()` method returns JSON output. An exception is thrown when XML is not used. Executes CLI commands. Takes CLI command string and returns show command output in a JSON form.

Note: The "clid" API can be useful when searching the output of show commands using JSON tools as shown in the example.

#### PYTHON

```
Example:
>>> import json
>>> from cli import *
>>> jversion = json.loads(clid("show
version"))
>>> jversion['bios_ver_str']
'08.06'
```

Arguments:

- cmd: Single CLI command or a batch of CLI commands. Delimiter for multiple CLI commands is a space followed by a semicolon. Configuration commands must be in a fully qualified form.

Returns:

- string: JSON-formatted output of show commands.

```
>>> from cli import *
>>> import json

>>>
>>> cli('configure terminal ; interface loopback 5 ; no shut')
''
>>> intflist=json.loads(clid('show interface brief'))
>>> i=0
>>> while i < len (intflist['TABLE_interface']['ROW_interface']):
...     intf=intflist['TABLE_interface']['ROW_interface'][i]
...     i=i+1
...     if intf['state'] == 'up':
...         print intf['interface']
```

The python interpreter and the Cisco python SDK are available by default in the Cisco NX-OS software. The SDK documentation shows how the cild() API can be used when working with working with JSON and XML. What are two effect of running the script? (Choose two.)

- A. configure interlace loopback 5
- B. issue shutdown on interface loopback 5
- C. show only the interfaces In the up status
- D. show only the interfaces in admin shut status
- E. show details for the TABLE interface

**Answer:** AC

**Explanation:**

Reference:

[https://www.cisco.com/c/en/us/td/docs/switches/datacenter/nexus9000/sw/7-x/programmability/guide/b\\_Cisco\\_](https://www.cisco.com/c/en/us/td/docs/switches/datacenter/nexus9000/sw/7-x/programmability/guide/b_Cisco_)

#### NEW QUESTION 312

- (Exam Topic 1)

Refer to the exhibit.

```
class ucsm sdk . ucshandle . UcsHandle ( ip , username , password , port = None , secure = None , proxy = None )
```

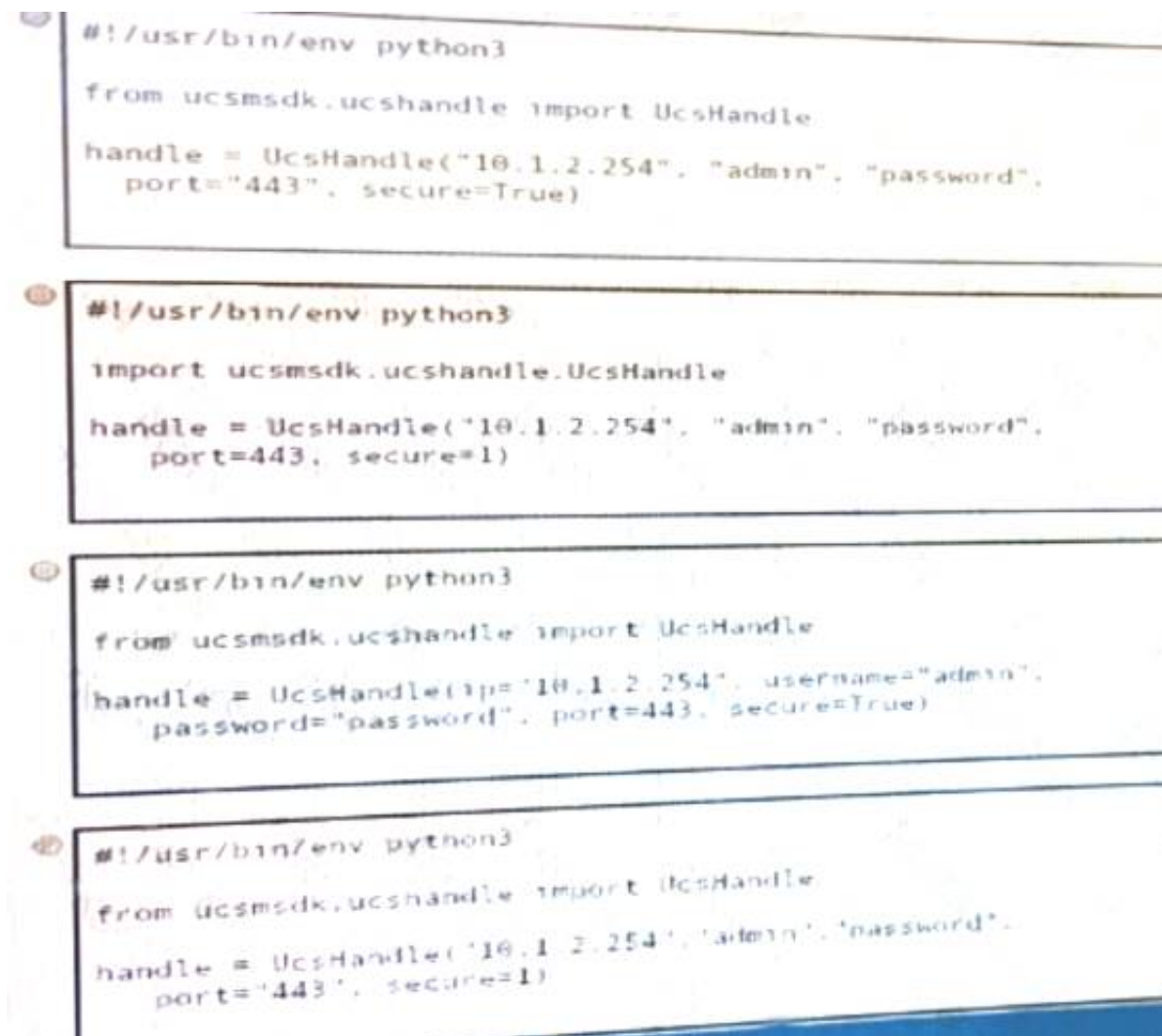
Bases: `ucsm sdk . ucssession . UcsSession`

[\[source\]](#)

UcsHandle class is the user interface point for any Ucs related communication.

- Parameters:**
- **ip** (*str*) – The IP or Hostname of the UCS Server
  - **username** (*str*) – The username as configured on the UCS Server
  - **password** (*str*) – The password as configured on the UCS Server
  - **port** (*int or None*) – The port number to be used during connection
  - **secure** (*bool or None*) – True for secure connection, otherwise False
  - **proxy** (*str*) – The proxy object to be used to connect

Given the API documentation for the UCS SDK python class, UcsHandle, which code snippet creates a handle instance?



- A. Option A
- B. Option B
- C. Option C
- D. Option D

Answer: C

#### NEW QUESTION 316

- (Exam Topic 1)

Fill in the blanks to complete the statement.

Given a username of “devnet” And a password “Cisco123”, applications must create a base64 encoding of the string “ \_\_\_\_\_ ” when sanding HTTP requests to an API that uses \_\_\_\_\_ authentication.

Given a username of "devnet" and a password of "cisco123", applications must create a base64 encoding of the string " \_\_\_\_\_ " when sending HTTP requests to an API that uses \_\_\_\_\_ authentication.

- A. Mastered
- B. Not Mastered

Answer: A

Explanation:

Solution as below

Given a username of "devnet" and a password of "cisco123", applications must create a base64 encoding of the string "devnet:cisco123" when sending HTTP requests to an API that uses Basic authentication.

#### NEW QUESTION 321

- (Exam Topic 1)

What are two advantages of version control software? (Choose two.)

- A. It supports tracking and comparison of changes in binary formate files.
- B. It allows old versions of packaged applications to be hosted on the Internet
- C. It provides wiki collaboration software for documentation.
- D. It supports comparisons between revisions of source code files.
- E. It allows new team members to access the current code and history.

Answer: DE

#### NEW QUESTION 324

- (Exam Topic 1)

Which device is a system that monitors and controls incoming and outgoing network traffic based on predetermined security rules?

- A. Switch
- B. Router



- C. Firewall
- D. Load balancer

**Answer:** C

#### NEW QUESTION 327

- (Exam Topic 1)

Which HTTP status Code means that the server cannot or will not process the request because of perceived client error?

- A. 100
- B. 203
- C. 303
- D. 400

**Answer:** D

#### NEW QUESTION 328

- (Exam Topic 1)

What is used in Layer 2 switches to direct packet transmission to the intended recipient?

- A. spanning tree
- B. IPv4 address
- C. IPv6 address
- D. MAC address

**Answer:** D

#### NEW QUESTION 329

- (Exam Topic 1)

What are two characteristics of Bare Metal environments that are related to application deployment? (Choose two.)

- A. Provide the hypervisor to host virtual servers
- B. Specifically designed for container-based workloads.
- C. Provides workloads with access to hardware features
- D. Suitable for legacy application that do not support virtualization
- E. Not compatible with other cloud services such as PaaS or SaaS offerings.

**Answer:** CD

#### NEW QUESTION 333

- (Exam Topic 1)

Fill in the blanks to complete the python script to retrieve a list of network devices using the Cisco DNA center API.

```
import requests
url = "https://myDNAserver/dna/intent/api/v1/network-device"
payload = {}
headers = {'x-auth-token': 'eyJ0eXAiOiJKV1QiLCJhbGciOiJIUzI1NiJ9.eyJzdWUiOiI1ZDE0OWZkMjhlZTY2MmQ3NGM5YzE5ZTIiLCJmYzMCiSlmV4cCI6MTU3MjM3ODE5MCwidXNlcm5hbWUiOiJraXN371274739.zhK5LPQd501ZUpZI0IH_qrgOXttlNbxSFFF7JOEtRIs'}
response = requests.request( , url,
headers = , data = )
print(response.text.encode('utf8'))
```

- A. Mastered
- B. Not Mastered

**Answer:** A

#### Explanation:

Solution as below.

```
import requests
url = "https://myDNAserver/dna/intent/api/v1/network-device"
payload = {}
headers = {'x-auth-token': 'eyJ0eXAiOiJKV1QiLCJhbGciOiJIUzI1NiJ9.eyJzdWUiOiI1ZDE0OWZkMjhlZTY2MmQ3NGM5YzE5ZTIiLCJmYzMCiSlmV4cCI6MTU3MjM3ODE5MCwidXNlcm5hbWUiOiJraXN371387657.zhK5LPQd501ZUpZI0IH_qrgOXttlNbxSFFF7JOEtRIs'}
response = requests.request("GET", url,
headers = headers, data = payload)
print(response.text.encode('utf8'))
```

#### NEW QUESTION 335

- (Exam Topic 1)

Before which process is code review performed when version control is used?

- A. committing code
- B. branching code
- C. merge of code
- D. checkout of code

**Answer:** C

#### NEW QUESTION 340

- (Exam Topic 1)

Drag and drop the HTTP methods from the left onto their generally accepted corresponding create, read, update, and delete operations on the right.

DELETE	Create
GET	Read
PATCH	Update
POST	Update
PUT	Delete

- A. Mastered
- B. Not Mastered

**Answer:** A

#### Explanation:

1 – D, 2 – B, 3 – C, 4 – E, 5 – A

Reference:

<https://www.cisco.com/c/en/us/td/docs/cloud-systems-management/application-policy-infrastructure-controller-e>  
 OR

Answer : Post

Get Put Delete

#### NEW QUESTION 341

- (Exam Topic 1)

Which CI/CD tool is an automation tool used to build, test, and deploy software?

- A. Nagios
- B. Gradle
- C. Jenkins
- D. Git

**Answer:** C

#### Explanation:

Reference:

<https://www.infoworld.com/article/3271126/what-is-cicd-continuous-integration-and-continuous-delivery-expla>

#### NEW QUESTION 343

- (Exam Topic 1)

Refer to the exhibit.

```
docker run -p 3000:5000 f877cbf2ff33
```

A process on the host wants to access the service running inside this Docker container. Which port is used to make a connection?

- A. only outbound connections between 3000 and 5000 are possible
- B. port 3000
- C. any port between 3000 and 5000
- D. port 5000

**Answer:** B

#### NEW QUESTION 348

- (Exam Topic 1)

How does requesting a synchronous API operation differ from requesting an asynchronous API operation?

- A. clients poll for the status of the execution of operations
- B. clients subscribe to a webhook for operation results
- C. clients can access the results immediately
- D. clients receive responses with a task id for further processing

**Answer:** C

#### NEW QUESTION 350

- (Exam Topic 1)

What are two security benefits of a Docker-based application?

- A. easier to patch because Docker containers include only dependencies that the application requires
- B. prevents information leakage that can occur when unhandled exceptions are returned in HTTP responses
- C. allows for separation of application that traditionally run in the same host
- D. natively secures access to secrets that are used by the running application
- E. guarantees container images are secured and free of vulnerabilities

**Answer:** AC

#### NEW QUESTION 351

- (Exam Topic 1)

What is an example of a network interface hardware address?

- A. domain name
- B. IP address
- C. workstation name
- D. MAC address

**Answer:** D

#### NEW QUESTION 352

- (Exam Topic 1)

Users cannot access a webserver and after the traffic is captured, the capture too\* shows an ICMP packet that reports "communication administratively prohibited"  
What Is the cause of this webserver access Issue?

- A. An access list along the path is blocking the traffic
- B. The traffic is not allowed to be translated with NAT and dropped.
- C. Users must authenticate on the webserver to access It
- D. A router along the path is overloaded and thus dropping traffic

**Answer:** A

#### NEW QUESTION 355

- (Exam Topic 1)

Drag and Drop the GIT commands from the left onto the right that add modified local files to a remote repository. Not all options are used

git push	Git command one
git add .	Git command two
git checkout -b "new branch"	Git command three
git commit -m "this is my edit"	
git pull	

- A. Mastered
- B. Not Mastered

**Answer:** A

#### Explanation:

git add .  
git commit -m "this is my edit" git push

#### NEW QUESTION 360

- (Exam Topic 1)

Refer to the exhibit.



```
def process_devices(dnac, token):
    url = "https://{}/api/v1/network-device".format(dnac['host'])
    headers["x-auth-token"] = token
    response = requests.get(url, headers=headers, verify=False)
    data = response.json()
    for item in data['response']:
        print(item["hostname"], " ", item["managementIpAddress"])
```

What is the function of the python script?

- A. Count and print the total number of available devices.
- B. Iterate over a list of network devices and write all device names and management IP addresses to an output file.
- C. Iterate over a list of network devices and write all device type and associated management IP address.
- D. For each device that is returned, display the device and, for each device, print the device name and management IP address.
- E. Loop through the returned list of network devices and, for each device, print the device name management IP address.

Answer: E

#### NEW QUESTION 365

- (Exam Topic 1)

Which two statements are true about Cisco UCS manager, Cisco Intersight APIs? (Choose two.)

- A. Cisco Intersight API interactions can be encoded in XML or JSON and require an APIs key in the HTTP header for authentication.
- B. USC Director API interactions can be XML- or JSON-encoded and require an APLs key in the HTTP header for authentication.
- C. UCS manager API interactions are XML-encoded and require a cookie in the method for authentication.
- D. Cisco Intersight uses XML to encoded API interactions and requires an API key pair for authentication.
- E. UCS manager uses JSON to encode API interactions and utilizes Base64-encoded credentials in the HTTP header for authentication.

Answer: BC

#### Explanation:

Reference:

[https://www.cisco.com/c/en/us/td/docs/unified\\_computing/ucs/ucs-director/rest-api-getting-started-guide/6-5/cis](https://www.cisco.com/c/en/us/td/docs/unified_computing/ucs/ucs-director/rest-api-getting-started-guide/6-5/cis)

[https://www.cisco.com/c/en/us/td/docs/unified\\_computing/ucs/sw/api/b\\_ucs\\_api\\_book.pdf](https://www.cisco.com/c/en/us/td/docs/unified_computing/ucs/sw/api/b_ucs_api_book.pdf)

#### NEW QUESTION 366

- (Exam Topic 1)

Drag and drop the network automation interfaces from the left onto the transport protocols that they support on the right. Not all options are used.

SSH	gRPC
HTTP	
HTTP/2	NETCONF
HTTPS	RESTCONF

- A. Mastered
- B. Not Mastered

Answer: A

#### Explanation:

SSH	gRPC
HTTP	HTTP/2
HTTP/2	NETCONF
HTTPS	SSH
	RESTCONF
	HTTPS

#### NEW QUESTION 369

- (Exam Topic 1)

In DNS, which record specifies an alias that refers to another name that ultimately resolves to an IP address?

- A. AAA
- B. SOA
- C. NS
- D. CNAME

**Answer:** D

#### Explanation:

Reference: <https://ns1.com/resources/dns-types-records-servers-and-queries>

#### NEW QUESTION 371

- (Exam Topic 1)

what is an advantage of a version control system?

- A. forces the practice of trunk-based development
- B. prevents over-writing code or configuration files
- C. facilitates resolving conflicts when merging code
- D. ensures that unit tests are written

**Answer:** C

#### NEW QUESTION 372

- (Exam Topic 1)

What operation is performed with YANG model-driven programmability in NX-OS?

- A. configure a device with native and OpenConfig-based models
- B. send CLI commands to a device and retrieve output in JSON format
- C. run Linux commands natively on the device
- D. bootstrap a device that has a factory-default configuration

**Answer:** A

#### Explanation:

Reference:

<https://www.cisco.com/c/en/us/products/collateral/switches/nexus-9000-series-switches/white-paper-c11-74151>

#### NEW QUESTION 376

- (Exam Topic 1)

Which two statement describe the role of an artifact repository in a CI/CD pipeline? (Choose two.)

- A. An artifact repository allows to compare and merge changes in the source code of files involved in a build process.
- B. An artifact repository is needed only for CI/CD pipeline executed on a public cloud infrastructure.
- C. An artifact repository provides traceability, search, and management of binary files.
- D. An artifact repository is needed only for managing open source software.
- E. An artifact repository stores files needed and generated during the build process.

**Answer:** CE

#### NEW QUESTION 379

- (Exam Topic 1)

Which two statements about JSON and XML are true? (Choose two.)

- A. JSON objects are collection of key value pair.
- B. The syntax of JSON contains tags, elements, and attributes.
- C. JSON arrays are an unordered set of key value pairs.
- D. The syntax of XML contains tags, elements, and attributes.
- E. XML objects are collections of key-value pairs.

**Answer:** AD

#### NEW QUESTION 380

- (Exam Topic 1)

Which two items are Cisco DevNet resources? (Choose two.)

- A. TAC support
- B. Bitbucket
- C. Sandbox
- D. Software research
- E. API Documentation

**Answer:** CE

#### Explanation:

Reference: <https://developer.cisco.com/>

### NEW QUESTION 383

- (Exam Topic 1)

Refer to the exhibit.

```
List the networks in a Meraki organization:

GET https://api.meraki.com/api/v0/organizations/<org_id>/networks
Response code: 200
Response body: [ {
  "id": <network_id>,
  "name": "Test Network",
  "organization_id": <new_org_id>,
  "type": "wireless",
  "timeZone": "America/Los_Angeles",
  "tags": " test "
} ]
```

Fill in the blanks to complete the cURL command to the list of networks in the Meraki organization with an id of 384279060

```
curl -X GET -L \
--url https://api.meraki.com/api/v0/ / / \
-H 'X-Cisco-Meraki-API-Key: $meraki_api_key'
```

- A. Mastered
- B. Not Mastered

Answer: A

Explanation:

```
"organization_id": <new_org_id>,
"type": "wireless",
"timeZone": "America/Los_Angeles",
"tags": " test "
} ]
```

t. Fill in the blanks to complete the cURL command to list the networks in the Meraki organization with an Id of 384279060:

```
meraki.com/api/v0/organizations / 384279060 / networks \
ki-API-Key: $meraki_api_key'
```

### NEW QUESTION 385

- (Exam Topic 1)

Which type of HTTP method is used by the Meraki nad webex teams APIs to send webhook notifications?

- A. HTTP GET
- B. HTTP PUT
- C. HTTP HEAD
- D. HTTP POST

Answer: D

Explanation:

Reference: <https://meraki.cisco.com/blog/tag/alerts/>

### NEW QUESTION 387

- (Exam Topic 1)

Refer to the exhibit.

```
#!/bin/bash
read ndir
while [ -d "$ndir" ]
do
cd $ndir
done
mkdir $ndir
```

What is the action of the Bash script that is shown?

- A. The script waits until input is entered



- B. If the directory exists, the script goes into it until there is no directory with the same name, then it creates a new directory.
- C. The script goes into the directory called "\$ndir" and makes a new directory called "\$ndir"
- D. The script waits until input is entered, then it goes into the directory entered and creates a new directory with the same name.
- E. For all directories in the current folder
- F. The script goes into directory and makes a new directory.

Answer: A

#### NEW QUESTION 390

- (Exam Topic 1)

An automation script fails to connect to an internal server exactly 1 out of 2 times it is executed. This behavior is seen from different clients. Which networking device must be at fault?

- A. Laptop on which the script is running
- B. Router
- C. Switch
- D. Load balancer

Answer: D

#### NEW QUESTION 391

- (Exam Topic 1)

What is a tenet of test-driven development?

- A. write documentation for tests
- B. write tests after adding new blocks of code
- C. write and run tests before writing new code
- D. run tests after writing new code

Answer: C

#### NEW QUESTION 392

- (Exam Topic 1)

Refer to the exhibit.

### List Rooms

List rooms.

The `title` of the room for 1:1 rooms will be the display name of the other person.

By default, lists rooms to which the authenticated user belongs.

Long result sets will be split into [pages](#).

**GET** `/v1/rooms`

#### Query Parameters

Name	Description
<code>teamId</code> string	List rooms associated with a team, by ID.
<code>type</code> string	List rooms by type. <i>Possible values: direct, group</i>
<code>sortBy</code> string	Sort results. <i>Possible values: id, lastactivity, created</i>
<code>max</code> number	Limit the maximum number of rooms in the response.  Default: <code>100</code>

Fill in the blank to complete the query parameter and value so that the result set is returned in reverse chronological order (most recent first) based on when message were entered.

HTTP GET `/v1/rooms` \_\_\_\_\_

A. Mastered

B. Not Mastered

**Answer:** A

**Explanation:**



#### NEW QUESTION 396

- (Exam Topic 1)

Which two types of NAT are used in a network? (Choose two.)

- A. Static NAT
- B. Normal NAT
- C. Multicast NAT
- D. Dynamic NAT
- E. Router NAT

**Answer:** AD

**Explanation:**

Reference: <https://www.dummies.com/programming/networking/cisco/types-of-network-address-translation/>

#### NEW QUESTION 399

- (Exam Topic 1)

Which statement describes the benefit of using functions in programming?

- A. Functions allow problems to be split into simpler, smaller groups, and reduce code repetition, which makes the code easier to read.
- B. Functions ensure that a developer understands the inner logic contained before using them as part of a script or application.
- C. Functions create the implementation of secret and encrypted algorithms.
- D. Functions store mutable values within a script or application.

**Answer:** A

#### NEW QUESTION 404

- (Exam Topic 1)

Drag and drop the requests from the left into the correct order on the right to create and check the path trace between two devices using Cisco DNA center API.

GET /api/v1/flow-analysis/{flowAnalysisId}	Step 1
POST /api/v1/flow-analysis	Step 2
POST /api/system/v1/auth/token	Step 3
GET /api/v1/network-device/ and choose IP of source and destination devices	Step 4

- A. Mastered
- B. Not Mastered

**Answer:** A

**Explanation:**

1 – C, 2 – D, 3 – B, 4 - A

#### NEW QUESTION 408

- (Exam Topic 1)

An application calls a REST API and expects a result set of more than 550 records, but each time the call is made, only 25 are returned. Which feature limits the amount of data that is returned by the API?

- A. pagination
- B. payload limit
- C. rate limiting
- D. service timeouts

**Answer:** A

#### NEW QUESTION 412

- (Exam Topic 1)

Which way should be used to safely the API keys?

- A. In an environment variable unique to the system database

- B. Encrypted in a configuration file that is separate from the code
- C. Encrypted in the code in a function
- D. Plain text in the code as a constant

**Answer:** B

#### NEW QUESTION 417

- (Exam Topic 1)

What is the outcome of executing this command?

```
git clone ssh://john@exmaple.com/path/to/my-project_git
```

- A. Creates a local copy of a repository called "my project"
- B. Creates a copy of a branch called "my project"
- C. Initiates a new Git repository called "my project"
- D. Creates a new branch called "my project"

**Answer:** A

#### Explanation:

Reference: <https://www.atlassian.com/git/tutorials/setting-up-a-repository/git-clone>

#### NEW QUESTION 419

- (Exam Topic 1)

Which type of threat occur when an attacker can send hostile data to an interpreter within an application?

- A. Cross-site scripting
- B. Sensitive data exposure
- C. Broken authentication
- D. Injection

**Answer:** D

#### Explanation:

Reference: [https://owasp.org/www-project-top-ten/OWASP\\_Top\\_Ten\\_2017/Top\\_10-2017\\_A1-Injection](https://owasp.org/www-project-top-ten/OWASP_Top_Ten_2017/Top_10-2017_A1-Injection)

#### NEW QUESTION 421

- (Exam Topic 1)

When a Cisco IOS XE networking device is configured using RESTCONF, what is the default data-encoding method?

- A. XML
- B. x-form-encoding
- C. YANG
- D. YAML

**Answer:** A

#### NEW QUESTION 426

- (Exam Topic 1)

Drag and drop the function on the left onto the type of plane that handles the function on the right.

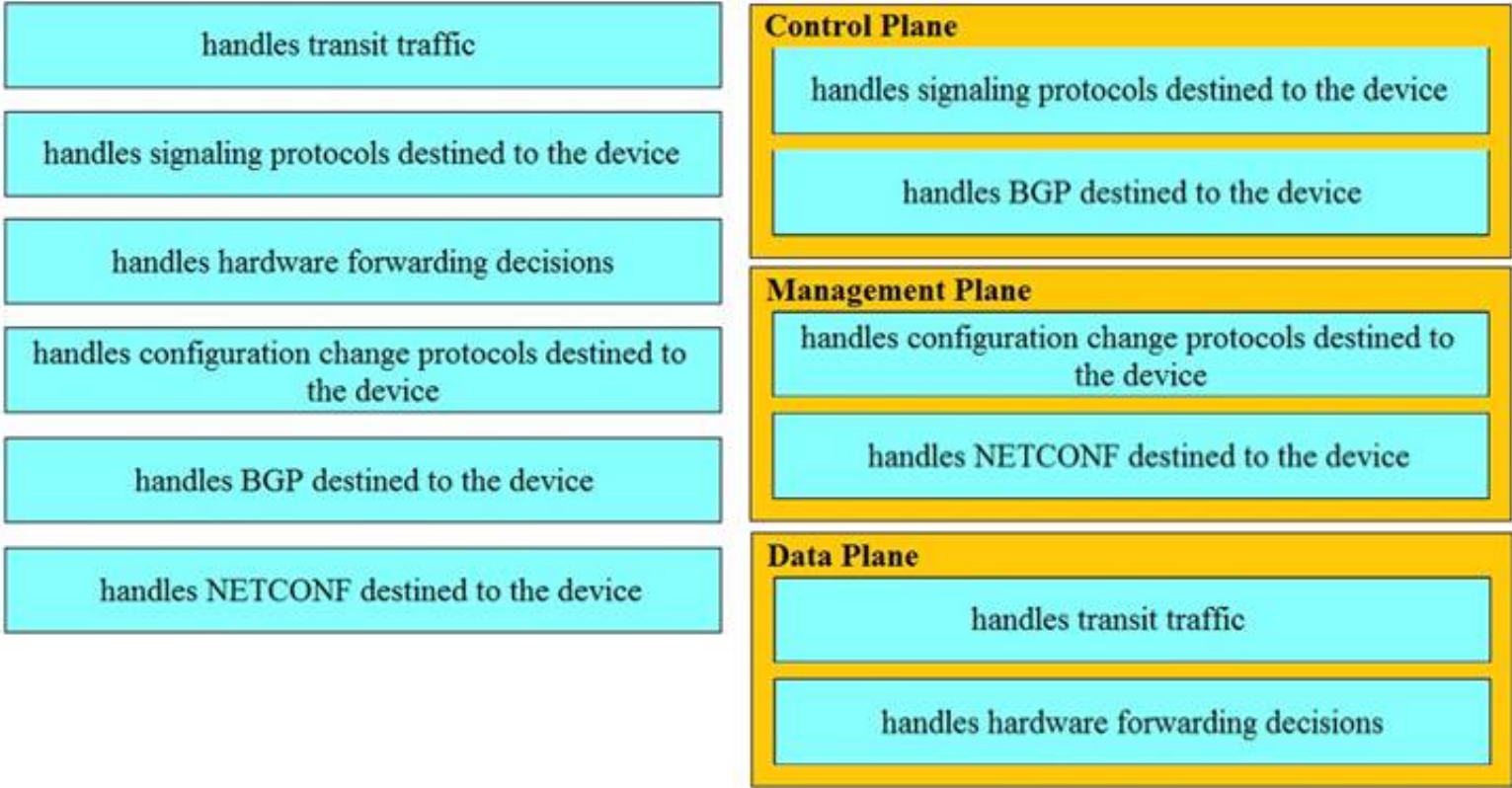
handles transit traffic	<b>Control Plane</b> <div></div> <div></div>
handles signaling protocols destined to the device	<div></div>
handles hardware forwarding decisions	<b>Management Plane</b> <div></div> <div></div>
handles configuration change protocols destined to the device	<div></div>
handles BGP destined to the device	<div></div>
handles NETCONF destined to the device	<b>Data Plane</b> <div></div> <div></div>

- A. Mastered
- B. Not Mastered

**Answer:** A



Explanation:



NEW QUESTION 430

- (Exam Topic 1)

Drag and drop the HTTP status codes from the left onto the correct descriptions on the right.

400	Unauthorized
401	Not Found
403	Bad Request
404	Forbidden

- A. Mastered
- B. Not Mastered

Answer: A

Explanation:

1 – B, 2 – D, 3 – A, 4 – C

Reference:

<https://www.cisco.com/c/en/us/support/docs/security/web-security-appliance/118217-troubleshoot-wsa-00.html>

NEW QUESTION 431

- (Exam Topic 1)

Which two protocols are used to apply a configuration change on a Cisco IOS XE device? (Choose two)

- A. CCX
- B. RESTCONF
- C. NETCONF
- D. HSRP
- E. CDP

Answer: BC

NEW QUESTION 433

- (Exam Topic 1)

Drag and drop the Python code from the left onto the correct step on the right to call a REST API.

<pre>response = requests.post(url, data=json.dumps(payload), \ headers=header, verify=False)</pre>	Step 1 – Import the correct libraries.
<pre>ticket = r_json["Token"] print (ticket)</pre>	Step 2 – Declare the necessary variable.
<pre>(_json = response.json() print(r_json)</pre>	Step 3 – Send the HTTP Request.
<pre>import requests import json</pre>	Step 4 – Format and display the response in JSON readable format.
<pre>controller = 'devnetapi.cisco.com/sandbox/dnacenter' url = 'https://' + controller + '/dna/system/api/v1/auth/token' payload = { 'username': 'devnetuser', 'password': 'pa55word' } header = { 'Content-type': 'application/json' }</pre>	Step 5 – Parse the response to display the Service Ticket.

- A. Mastered  
B. Not Mastered

**Answer:** A

**Explanation:**

<pre>response = requests.post(url, data=json.dumps(payload), \ headers=header, verify=False)</pre>	<pre>import requests import json</pre>
<pre>ticket = r_json["Token"] print (ticket)</pre>	<pre>controller = 'devnetapi.cisco.com/sandbox/dnacenter' url = 'https://' + controller + '/dna/system/api/v1/auth/token' payload = { 'username': 'devnetuser', 'password': 'pa55word' } header = { 'Content-type': 'application/json' }</pre>
<pre>(_json = response.json() print(r_json)</pre>	<pre>response = requests.post(url, data=json.dumps(payload), \ headers=header, verify=False)</pre>
<pre>import requests import json</pre>	<pre>(_json = response.json() print(r_json)</pre>
<pre>controller = 'devnetapi.cisco.com/sandbox/dnacenter' url = 'https://' + controller + '/dna/system/api/v1/auth/token' payload = { 'username': 'devnetuser', 'password': 'pa55word' } header = { 'Content-type': 'application/json' }</pre>	<pre>ticket = r_json["Token"] print (ticket)</pre>

#### NEW QUESTION 435

- (Exam Topic 1)

Which platform is run directly using a hypervisor?

- A. bare metal systems  
B. containers  
C. virtual machines  
D. applications

**Answer:** C

#### NEW QUESTION 437

- (Exam Topic 1)

What is the Git command to delete a local branch named “experiment” without a warning?

- A. git branch -n experiment  
B. git branch -rm experiment  
C. git branch -f experiment  
D. git branch -D experiment

**Answer:** D

**Explanation:**

Reference: <https://www.atlassian.com/git/tutorials/using-branches>

**NEW QUESTION 438**

- (Exam Topic 1)

On which network plane is routing protocol traffic handled?

- A. data plane
- B. management plane
- C. authentication plane
- D. control plane

**Answer:** D

**Explanation:**

Reference: [https://tools.cisco.com/security/center/resources/understanding\\_cpnr](https://tools.cisco.com/security/center/resources/understanding_cpnr)

**NEW QUESTION 439**

- (Exam Topic 1)

Drag and drop the network automation interfaces from the left onto the transport protocols that they support on the right. (Not all Options are used)

SSH	gRPC
HTTP	
HTTP/2	NETCONF
HTTPS	
	RESTCONF

- A. Mastered
- B. Not Mastered

**Answer:** A

**Explanation:**

Grpc == http/2 , netconfig == ssh , restconfig == https

**NEW QUESTION 443**

- (Exam Topic 1)

Refer to the exhibit.

```
<books>
  <science>
    <biology>10.00</biology>
    <geology>9.00</geology>
    <chemistry>8.00</chemistry>
  </science>
  <math>
    <calculus>20.00</calculus>
    <algebra>12.00</algebra>
  </math>
</books>
```

Which JSON is equivalent to the XML –encoded data?



```
A. [ {
  "books": {
    "science": {
      "biology": "10.00",
      "geology": "9.00",
      "chemistry": "8.00"
    },
    "math": {
      "calculus": "20.00",
      "algebra": "12.00"
    }
  }
} ]

B. {
  "books": [
    "science": {
      "biology": "10.00",
      "geology": "9.00",
      "chemistry": "8.00"
    },
    "math": {
      "calculus": "20.00",
      "algebra": "12.00"
    }
  ]
}

C. {
  "books": [
    "science": {
      "biology": "10.00",
      "geology": "9.00",
      "chemistry": "8.00"
    },
    "math": {
      "calculus": "20.00",
      "algebra": "12.00"
    }
  ]
}

D. {
  "books": [
    "science", {
      "biology": "10.00",
      "geology": "9.00",
      "chemistry": "8.00"
    },
    "math", {
      "calculus": "20.00",
      "algebra": "12.00"
    }
  ]
}
```

- A. Option A
- B. Option B
- C. Option C
- D. Option D

Answer: A

NEW QUESTION 444

- (Exam Topic 1)  
Refer to the exhibit.

```
{
  "items": [
    {
      "kind": "object#NetworkObj",
      "selfLink": "https://10.201.230.5/api/objects/networkobjects/db01",
      "name": "db01",
      "host": {
        "kind": "IPv4address",
        "value": "172.16.0.11"
      },
      "objectId": "db01"
    }
  ]
}
```

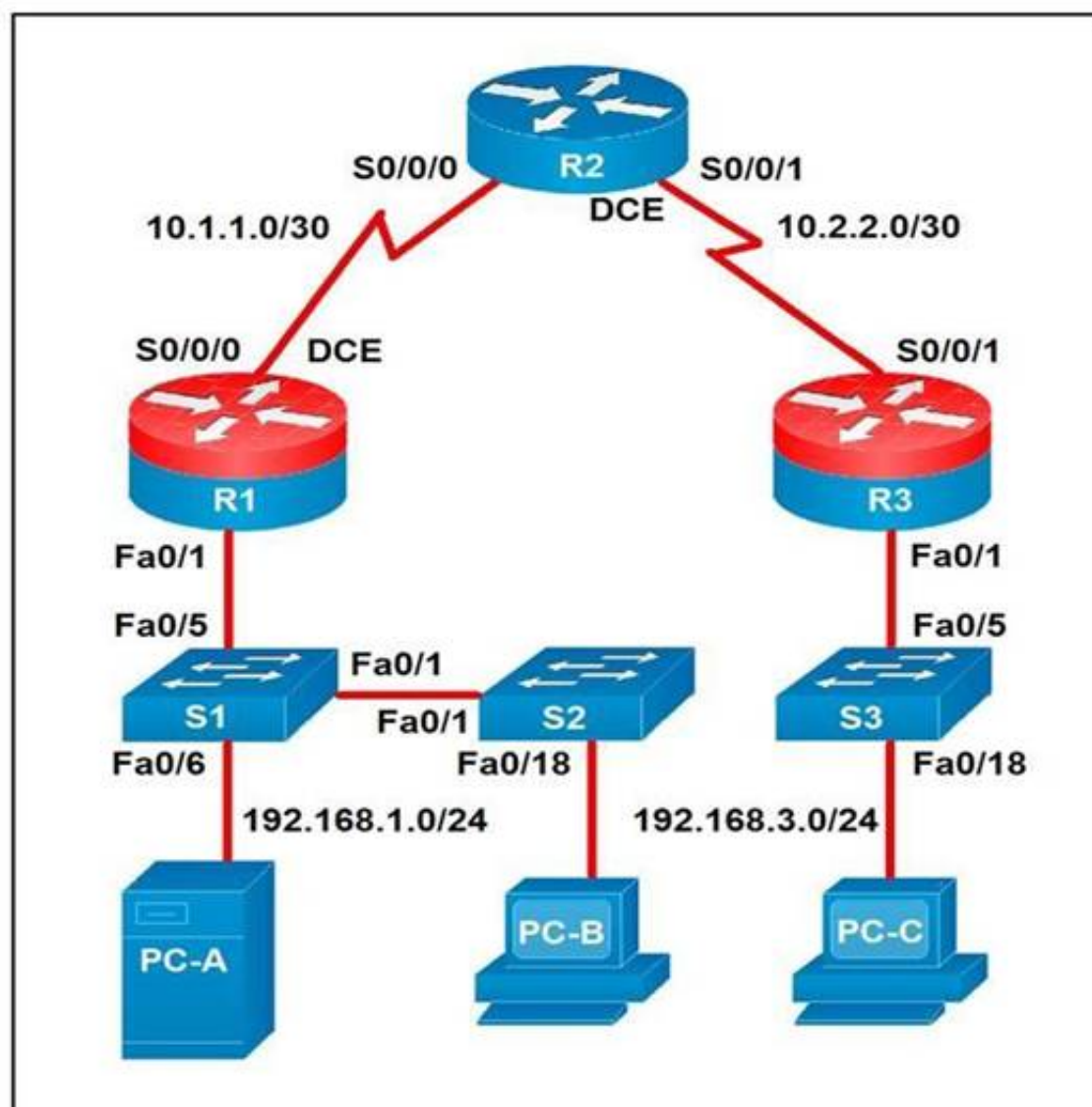
The JSON data in the exhibit has been parsed and stored in a variable, "data". What returns the value "172.16.0.11" ?

- A. data['items'][0]['host']['value']
- B. data['items']['1']['host']['value']
- C. data['items']['host'][1]
- D. data['items']['host']['value']

**Answer: A**

#### NEW QUESTION 446

- (Exam Topic 1)  
Refer to the exhibit.



Which two statements about the network diagram are true? (Choose two.)

- A. PC-A and PC-B are in the same subnet.
- B. One of the routers has two connected serial interfaces.
- C. The subnet of PC-C can contain 256 hosts.
- D. R1 and R3 are in the same subnet.
- E. The subnet address of PC-B has 18 bits dedicated to the network portion.

**Answer: BC**

#### NEW QUESTION 448

- (Exam Topic 1)  
Refer to the exhibit.

```

bash-3.2$ curl -H "Content-Type: application/json" -H "Authorization: Bearer
A - Fj2zzykEa09lic9GK2j8LtE1HklH6oRHPQdw1Pat60i7ndtHHnWzL2b5PQmG14Kk_B9ei5ISAClY7-
NarA-2n9H-tGgt-SxQ39iDejgcs" -i -d "{ \"roomId\":
B - \"Y2geK53sjELknosrC7SwQ5ZGL99pHgiuScB7DfNvUstr8Xx4wDKLiPORcEkryAnM3QmK9LQZsPOG4\"
, \"text\": \"test2\" }" -X POST https://api.ciscopark.com/v1/messages C
D - HTTP/1.1 200 OK
Via: 1.1 linkerD
Transfer-Encoding: chunked
TrackingID: ROUTER_5E0FE283-63EB-01BB-00ED-806BF1BD00ED
E - Date: Sat, 01 Jan 2020 00:55:31 GMT
Server: Redacted
Content-Type: application/json; charset=UTF-8
Vary: Accept-Encoding
Strict-Transport-Security: max-age=63072000; includedSybDomains; preload

{"id":
YCPJf3aVovyBYcbn7lSdesNkKcgN5tlExdc6dcnPtl4Va05NfCh9MG17j0tWXQLoIPuoJ73uu7JdoX
q9 ", "roomId":
F - Y2geK53sjELknosrC7SwQ5ZGL99pHgiuScB7DfNvUstr8Xx4wDKLiPORcEkryAnM3QmK99LQZsP0G4
", " roomType": "group", "text": "test2", "personId":
YcgYzL6Xgtyfw81XXwqfKf7whfj23KuqWt4kLWkbb3JwEJBlVMZOkIvyDdFoppb0einNj111FcMyy5
wD", "personEmail": "user@webex.com", "created": "2020-01-01T00:55:32.492Z"}
bash-3.2$

```

Drag and drop the descriptors from the left onto the correct parts of the API request and response on the right.

Response Headers	A
HTTP Request	B
HTTP Response	C
Request Payload	D
Request Headers	E
Response Payload	F

- A. Mastered  
B. Not Mastered

Answer: A

Explanation:

A – E, B – D, C – B, D – C, E – A, F – F

#### NEW QUESTION 452

- (Exam Topic 1)

A 401 HTTP response code is returned when calling a REST API. What is the error state identified by this response code?

- A. The server cannot process the request as it has detected an issue in the request syntax or body.  
B. The server accepted the request but the client is not authorized for this content.  
C. The request has not been accepted because it requires authentication.  
D. The server cannot find the requested resource because the path specified is incorrect.

Answer: C

Explanation:

Reference:

https://blog.restcase.com/rest-api-error-codes-101/#:~:text=A%20401%20error%20response%20indicates,crede

#### NEW QUESTION 457

- (Exam Topic 1)



Which two use cases are supported by Meraki APIs? (Choose two.)

- A. Retrieve live streams from a Meraki Camera.
- B. Build a custom Captive Portal for Mobile Apps.
- C. Configure network devices via the Dashboard API.
- D. Build location-aware apps from Wi-Fi and LoRaWAN devices.
- E. Deploy applications onto the devices.

**Answer:** BC

#### NEW QUESTION 460

- (Exam Topic 1)

What is the benefit of edge computing?

- A. It reduces network latency by moving processing closer to the data source.
- B. It simplifies security as devices and processing are brought closer together
- C. It removes the need for centralized data processing.
- D. It reduces data velocity from devices or other data sources.

**Answer:** A

#### Explanation:

Reference: <https://blogs.cisco.com/networking/time-to-get-serious-about-edge-computing>

#### NEW QUESTION 465

- (Exam Topic 1)

Which two NETCONF operations cover the RESTCONF GET operation? (Choose two.)

- A. <get>
- B. <edit>
- C. <get-update>
- D. <modify-config>
- E. <get-config>

**Answer:** AE

#### Explanation:

Reference:

<https://www.cisco.com/c/en/us/support/docs/storage-networking/management/200933-YANG-NETCONF-Conf>

#### NEW QUESTION 470

- (Exam Topic 1)

What is the purpose of the Cisco VIRL software tool?

- A. To verify configurations against compliance standards
- B. To simulate and model networks
- C. To automate API workflows
- D. To test performance of an application

**Answer:** B

#### Explanation:

Reference: <https://www.speaknetworks.com/cisco-virl-better-gns3/>

#### NEW QUESTION 472

- (Exam Topic 1)

Which is an advantage of using network programmability?

- A. It removes CLI access for devices.
- B. It provides for more scalable and replicable network provisioning.
- C. Manual configuration is faster.
- D. No cloud abstraction occurs.

**Answer:** B

#### NEW QUESTION 474

- (Exam Topic 1)

On which port does NETCONF operate by default?

- A. 23
- B. 443
- C. 822
- D. 830

**Answer:** D

#### NEW QUESTION 477

- (Exam Topic 1)

Which platform is run directly using a hypervisor?

- A. Virtual
- B. Bare metal systems
- C. Containers
- D. Applications

**Answer:** C

#### NEW QUESTION 481

- (Exam Topic 1)

What is the first development task in test-driven development?

- A. Write code that implements a desired function.
- B. Write a failing test case for a desired function.
- C. Write a passing test case for existing code.
- D. Reverse engineer the code for a desired function.

**Answer:** B

#### Explanation:

Reference:

<https://technologyconversations.com/2013/12/20/test-driven-development-tdd-example-walkthrough/>

#### NEW QUESTION 485

- (Exam Topic 1)

Which two descriptions can be given to an application that is interacting with a webhook? (Choose two.)

- A. Processor
- B. Codec
- C. Listener
- D. Receiver
- E. Transaction monitor

**Answer:** CD

#### NEW QUESTION 490

- (Exam Topic 1)

Refer to the exhibit.

```
json_string = """
{
    "researcher": {
        "name": "Ford Perfect",
        "species": "Betelgeusian",
        "relatives": [
            {
                "name": "Zaphod Beeblebrox",
                "species": "Betelgeusian"
            }
        ]
    }
}
"""

my_json = json.loads(json_string)
```

Which python data structure does my\_json contain?

- A. List
- B. Json
- C. Map
- D. Dict

**Answer:** D

#### Explanation:

Reference:

<https://stackoverflow.com/questions/34764979/loading-python-string-with-u-as-json?noredirect=1&lq=1>

#### NEW QUESTION 494

- (Exam Topic 1)

How is a branch called "my-bug-fix" started to develop a fix needed in a product?

- A. git branch -b my-bug-fix
- B. git checkout -b my-bug-fix
- C. git checkout my-bug-fix
- D. git branch my-bug-fix

**Answer:** B

#### NEW QUESTION 498

- (Exam Topic 1)

Which line is an example of the start of a chunk from a unified diff?

- A. @@ -90,88 +20191008T1349@@
- B. @@ -20191007T1200 +88,90 @@
- C. @@ -20191007T1200 +20191008T1349@@
- D. @@ -88,10 +88,6 @@

**Answer:** D

#### Explanation:

Reference:

<https://unix.stackexchange.com/questions/252927/what-do-the-numbers-in-the-line-mean-in-output-of-diff>

#### NEW QUESTION 503

- (Exam Topic 1)

A company has written a script that creates a log bundle from the Cisco DNA Center every day. The script runs without error and the bundles are produced. However, when the script is run during business hours, report poor voice quality of phones calls. What explains this behavior?

- A. The application is running in the Voice VLAN and causes delays and jitter in the subnet.
- B. The speed and duplex settings in Cisco DNA Center are set incorrectly, which causes the transfer to be too slow.
- C. 9 The script is written in a low-level programming language where there is no memory safety
- D. This causes a buffer overflow and disruption on the network.
- E. Generating the logs causes the CPU on the network controller to spike, which causes delays in forwarding the voice IP packets.

**Answer:** D

#### NEW QUESTION 507

- (Exam Topic 1)

What are the two principles of an infrastructure as code environment? (Choose two)

- A. Complete complex systems must be able to be built from reusable infrastructure definitions.
- B. Environments must be provisioned consistently using the same inputs.
- C. Redeployments cause varying environment definitions.
- D. Service overlap is encouraged to cater for unique environment needs.
- E. Components are coupled, and definitions must be deployed for the environment to function.

**Answer:** AB

#### NEW QUESTION 509

.....



## THANKS FOR TRYING THE DEMO OF OUR PRODUCT

Visit Our Site to Purchase the Full Set of Actual 200-901 Exam Questions With Answers.

We Also Provide Practice Exam Software That Simulates Real Exam Environment And Has Many Self-Assessment Features. Order the 200-901 Product From:

<https://www.2passeasy.com/dumps/200-901/>

## Money Back Guarantee

### 200-901 Practice Exam Features:

- \* 200-901 Questions and Answers Updated Frequently
- \* 200-901 Practice Questions Verified by Expert Senior Certified Staff
- \* 200-901 Most Realistic Questions that Guarantee you a Pass on Your FirstTry
- \* 200-901 Practice Test Questions in Multiple Choice Formats and Updatesfor 1 Year