



# Microsoft

## Exam Questions AZ-801

Configuring Windows Server Hybrid Advanced Services

## About ExamBible

*[Your Partner of IT Exam](#)*

## Found in 1998

ExamBible is a company specialized on providing high quality IT exam practice study materials, especially Cisco CCNA, CCDA, CCNP, CCIE, Checkpoint CCSE, CompTIA A+, Network+ certification practice exams and so on. We guarantee that the candidates will not only pass any IT exam at the first attempt but also get profound understanding about the certificates they have got. There are so many alike companies in this industry, however, ExamBible has its unique advantages that other companies could not achieve.

## Our Advances

### \* 99.9% Uptime

All examinations will be up to date.

### \* 24/7 Quality Support

We will provide service round the clock.

### \* 100% Pass Rate

Our guarantee that you will pass the exam.

### \* Unique Gurantee

If you do not pass the exam at the first time, we will not only arrange FULL REFUND for you, but also provide you another exam of your claim, ABSOLUTELY FREE!

**NEW QUESTION 1**

- (Exam Topic 3)

You have five Azure virtual machines.

You need to collect performance data and Windows Event logs from the virtual machines. The data collected must be sent to an Azure Storage account.

What should you install on the virtual machines?

- A. the Azure Connected Machine agent
- B. the Azure Monitor agent
- C. the Dependency agent
- D. the Telegraf agent
- E. the Azure Diagnostics extension

**Answer:** E

**Explanation:**

Reference:

<https://docs.microsoft.com/en-us/azure/azure-monitor/agents/diagnostics-extension-overview>

**NEW QUESTION 2**

- (Exam Topic 3)

You have 50 on-premises servers that run Windows Server. You have an Azure subscription that contains 50 virtual machines that run Windows Server.

You need to create an Azure Monitor alert that will be triggered if one of the servers or virtual machines has less than 10 percent available disk space.

What should you do first?

- A. Create an Alert Rule
- B. Install the Azure Monitor agent on each server.
- C. Enable System Insights on each server.
- D. Create a Log Analytics workspace and configure the Agent management settings.

**Answer:** A

**Explanation:**

<https://learn.microsoft.com/en-us/answers/questions/165893/help-to-set-up-azure-alert-for-disk-space-alert-wh.h>

**NEW QUESTION 3**

- (Exam Topic 3)

Your network contains an Active Directory Domain Services (AD DS) domain. The domain contains three servers named Server1, Server2, and Server3 that run Windows Server. All the servers are on the same network and have network connectivity.

On Server1, Windows Defender Firewall has a connection security rule that has the following settings:

- Rule Type: Server-to-server
- Endpoint 1: Any IP address
- Endpoint 2: Any IP address
- Requirements: Require authentication for inbound connections and request authentication for outbound connections
- Authentication Method: Computer (Kerberos V5)
- Profile: Domain, Private, Public
- Name: Rule1

For each of the following statements, select Yes if the statement is true. Otherwise, select No. NOTE: Each correct selection is worth one point.

**Answer Area**

Statements	Yes	No
When Server1 establishes a network connection with Server2, the connection is encrypted.	<input type="radio"/>	<input type="radio"/>
Server2 can establish a network connection with Server3.	<input type="radio"/>	<input type="radio"/>
When Server3 establishes a network connection with Server1, the connection is encrypted.	<input type="radio"/>	<input type="radio"/>

- A. Mastered
- B. Not Mastered

**Answer:** A

**Explanation:**

## Answer Area

Statements	Yes	No
When Server1 establishes a network connection with Server2, the connection is encrypted.	<input type="radio"/>	<input checked="" type="radio"/>
Server2 can establish a network connection with Server3.	<input checked="" type="radio"/>	<input type="radio"/>
When Server3 establishes a network connection with Server1, the connection is encrypted.	<input type="radio"/>	<input checked="" type="radio"/>

### NEW QUESTION 4

- (Exam Topic 3)

Your network contains an Active Directory Domain Services (AD DS) domain. The domain contains two servers named Server1 and Server2 that run Windows Server.

You need to ensure that you can use the Computer Management console to manage Server2. The solution must use the principle of least privilege.

Which two Windows Defender Firewall with Advanced Security rules should you enable on Server2? Each correct answer presents part of the solution.

NOTE: Each correct selection is worth one point.

- A. the COM+ Network Access (DCOM-In) rule
- B. all the rules in the Remote Event Log Management group
- C. the Windows Management Instrumentation (WMI-In) rule
- D. the COM+ Remote Administration (DCOM-In) rule
- E. the Windows Management Instrumentation (DCOM-In) rule

**Answer:** AB

#### Explanation:

Reference:

<https://docs.microsoft.com/en-us/windows-server/administration/server-manager/configure-remote-management>

### NEW QUESTION 5

- (Exam Topic 3)

You have three Azure virtual machines named VM1, VM2, and VM3 that host a multitier application. You plan to implement Azure Site Recovery.

You need to ensure that VM1, VM2, and VM3 fail over as a group. What should you configure?

- A. an availability zone
- B. a recovery plan
- C. an availability set

**Answer:** B

#### Explanation:

Reference:

<https://docs.microsoft.com/en-us/azure/site-recovery/site-recovery-overview>

### NEW QUESTION 6

- (Exam Topic 3)

You have a server named Server1 that runs Windows Server.

On Server1, you create a Data Collector Set named CollectorSet1 based on the Basic template. You need to configure CollectorSet1 to meet the following requirements:

- > Older performance counter logs must be overwritten by new ones.
- > Performance counter logging must stop if there is less than 500 MB of free disk space.

What should you configure for each requirement? To answer, select the appropriate options in the answer area.

NOTE: Each correct selection is worth one point.

Older performance counter logs must be overwritten by new ones:

The Configuration properties  
The Data Manager properties  
The Performance Counter properties

Performance counter logging must stop if there is less than 500 MB of free disk space:

The Configuration properties  
The Data Manager properties  
The Performance Counter properties

- A. Mastered
- B. Not Mastered

Answer: A

Explanation:

Table Description automatically generated with medium confidence

NEW QUESTION 7

- (Exam Topic 3)

You have an Azure Active Directory Domain Services (Azure AD DS) domain named aadds.contoso.com. You have an Azure virtual network named Vnet1. Vnet1 contains two virtual machines named VM1 and VM2 that run Windows Server. VM1 and VM2 are joined to aadds.contoso.com.

You create a new Azure virtual network named Vnet2. You add a new server named VM3 to Vnet2. When you attempt to join VM3 to aadds.contoso.com, you get an error message that the domain cannot be found.

You need to ensure that you can join VM3 to aadds.contoso.com.

Answer Area

Network configuration:

- Add a subnet to Vnet1.
- Add a subnet to Vnet2.
- Add a private endpoint to Vnet2.
- Configure virtual network peering between Vnet1 and Vnet2.

DNS configuration:

- Add a custom DNS server to Vnet1.
- Add a custom DNS server to Vnet2.
- Create an Azure private DNS zone named aadds.contoso.com.
- Add a virtual network link to an existing Azure private DNS zone.

- A. Mastered
- B. Not Mastered

Answer: A

Explanation:

Answer Area

Network configuration:

- Add a subnet to Vnet1.
- Add a subnet to Vnet2.
- Add a private endpoint to Vnet2.
- Configure virtual network peering between Vnet1 and Vnet2.

DNS configuration:

- Add a custom DNS server to Vnet1.
- Add a custom DNS server to Vnet2.
- Create an Azure private DNS zone named aadds.contoso.com.
- Add a virtual network link to an existing Azure private DNS zone.

NEW QUESTION 8

- (Exam Topic 3)

Your network contains a single-domain Active Directory Domain Services (AD DS) forest named contoso.com. The functional level of the forest is Windows Server 2012 R2. All domain controllers run Windows Server 2012 R2.

Sysvol replicates by using the File Replication Service (FRS).

You plan to replace the existing domain controllers with new domain controllers that will run Windows Server 2022.

You need to ensure that you can add the first domain controller that runs Windows Server 2022. Solution; You raise the domain and forest functional levels.

Does this meet the goal?

- A. Yes
- B. No

Answer: B

NEW QUESTION 9

- (Exam Topic 3)

Note: This question is part of a series of questions that present the same scenario. Each question in the series contains a unique solution that might meet the stated goals. Some question sets might have more than one correct solution, while others might not have a correct solution.

After you answer a question in this section, you will NOT be able to return to it. As a result, these questions will not appear in the review screen.

You have a server named Server1 that runs Windows Server.

You need to ensure that only specific applications can modify the data in protected folders on Server1. Solution: From Virus & threat protection, you configure

Tamper Protection.  
Does this meet the goal?

- A. Yes
- B. No

Answer: B

Explanation:

Reference:  
<https://docs.microsoft.com/en-us/microsoft-365/security/defender-endpoint/customize-controlled-folders?view=>

NEW QUESTION 10

- (Exam Topic 2)  
Which domain controller should be online to meet the technical requirements for DC4?

- A. DC1
- B. DC2
- C. DC3

Answer: B

NEW QUESTION 10

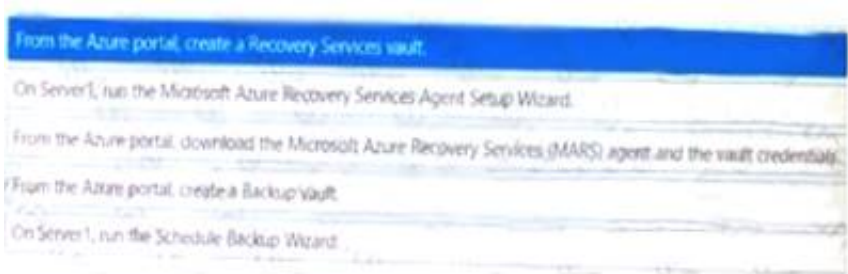
- (Exam Topic 3)  
Your network contains an Active Directory Domain Services (AD DS) domain All domain members have Microsoft Defender Credential Guard with UEFI tock configured in the domain you deploy a server named Server1 that runs Windows Server. You disable Credential Guard on Server1. You need to ensure that Server1 is MOST subject to Credential Guard restrictions. What should you do next?

- A. Run the Device Guard and Credential Guard hardware readiness tool
- B. Disable the Turn on Virtual nation Based Security group policy setting
- C. Run dism and specify the /Disable-Feature and /FeatureName:IsolatedUserMode parameters

Answer: B

NEW QUESTION 11

- (Exam Topic 3)  
You have an on-premises server named Server1 that runs Windows Server. You need to perform an on-demand backup of the files on Server 1 by using Azure Backup.  
Which five actions should you perform in sequence? To answer, move the appropriate actions actions from the list of actions to the answer are and arrange them in the correct order.



- A. Mastered
- B. Not Mastered

Answer: A

Explanation:

A picture containing text Description automatically generated

NEW QUESTION 16

- (Exam Topic 3)  
You have a Hyper-V failover cluster named Cluster1 that uses a cloud witness. Cluster1 hosts a virtual machine named VM1 that runs Windows Server.  
You need to fail over VM1 automatically to a different node when a service named Service1 on VM1 fails. What should you do on Cluster1 and VM1? To answer, select the appropriate options in the answer area. NOTE: Each correct selection is worth one point.



Cluster1:

Modify the settings of the VM1 cluster role.
Configure monitoring of the VM1 cluster role.
Change the startup priority of the VM1 cluster role.

VM1:

Configure the Startup Type of Service1.
Configure the Recovery settings of Service1.
Configure the Startup and Recovery settings.
Install and configure the Azure Monitor agent.

- A. Mastered
- B. Not Mastered

**Answer:** A

**Explanation:**

Text, table Description automatically generated

**NEW QUESTION 17**

- (Exam Topic 3)

Your company uses Storage Spaces Direct.

You need to view the available storage in a Storage Space Direct storage pool. What should you use?

- A. The Get-StoragefileServer cmdlet
- B. Resource Monitor
- C. System Configuration
- D. Windows Admin Center

**Answer:** D

**NEW QUESTION 21**

- (Exam Topic 3)

You have two Azure virtual machines named VM1 and VM2. VM1 is backed up to an Azure Recovery Services vault daily and retains backups for 30 days.

You need to restore an individual file named C:\Data\Important.docx from VM1 to VM2. The solution must minimize administrative effort.

Which four actions should you perform in sequence? To answer, move the appropriate actions from the list of actions to the answer area and arrange them in the correct order.

Actions	Answer Area
Unmount the disks.	
Download the file recovery script for VM1.	
Copy the file by using Azure Storage Explorer.	
Copy the file by using File Explorer.	
Restore the file by using Windows Server Backup.	
Run the file recovery script on VM2.	

- A. Mastered
- B. Not Mastered

**Answer:** A

**Explanation:**

Text Description automatically generated

Reference:

<https://docs.microsoft.com/en-us/azure/backup/backup-azure-restore-files-from-vm>

**NEW QUESTION 24**

- (Exam Topic 3)

You have two servers that run Windows Server as shown in the following table.

Name	Location	Domain/workgroup
Server1	On-premises	Domain
Server2	Azure virtual machine	Workgroup

You need to copy the contents of volume E from Server1 to Server2. The solution must meet the following requirements:

- Ensure that files in-use are copied.

➤ Minimize administrative effort.  
What should you use?

- A. Storage Migration Service
- B. Azure File Sync
- C. Azure Backup
- D. Storage Replica

**Answer:** A

#### NEW QUESTION 26

- (Exam Topic 3)

You have an on-premises server that runs Windows Server and contains a folder named Folder1. Folder1 contains 50 GB of files.

You have an Azure subscription that contains an Azure Files share named share1. You need to migrate the data in Folder1 to share1.

What should you do? To answer, select the appropriate options in the answer area.

NOTE: Each correct selection is worth one point.

**Answer Area**

Deploy to Azure:	<div><div>An Azure Storage account</div><div>ArcBox</div><div>An Azure Migrate project</div><div>An on-premises data gateway</div><div><b>An Azure Storage account</b></div><div>A Storage Sync Service instance</div></div>
Install on Server1:	<div><div>The Azure File Sync agent</div><div>The Azure Connected Machine agent</div><div><b>The Azure File Sync agent</b></div><div>Storage Migration Service</div><div>Storage Replica</div></div>

- A. Mastered
- B. Not Mastered

**Answer:** A

**Explanation:**

**Answer Area**

Deploy to Azure:	<div><div>An Azure Storage account</div><div>ArcBox</div><div>An Azure Migrate project</div><div>An on-premises data gateway</div><div><b>An Azure Storage account</b></div><div>A Storage Sync Service instance</div></div>
Install on Server1:	<div><div>The Azure File Sync agent</div><div>The Azure Connected Machine agent</div><div><b>The Azure File Sync agent</b></div><div>Storage Migration Service</div><div>Storage Replica</div></div>

#### NEW QUESTION 27

- (Exam Topic 3)

You have two Azure virtual networks named Vnet1 and Vnet2.

You have a Windows 10 device named Client1 that connects to Vnet1 by using a Point-to-Site (P2S) IKEv2 VPN.

You implement virtual network peering between Vnet1 and Vnet2. Vnet1 allows gateway transit Vnet2 can use the remote gateway.

You discover that Client1 cannot communicate with Vnet2. You need to ensure that Client1 can communicate with Vnet2. Solution: You enable BGP on the gateway of Vnet1.

Does this meet the goal?

- A. Yes
- B. No

**Answer:** B

#### NEW QUESTION 28

- (Exam Topic 3)

Your network contains an Active Directory Domain Services (AD DS) domain. The domain contains a print server named Server1. All printers are deployed to users by using a Group Policy Object (GPO) named GPO1.



You deploy a new server named Server2.

You need to decommission Server1. The solution must meet the following requirements:

- Migrate the shared printers to Server2 by using the Printer Migration Wizard.
- Ensure that the users use the printers on Server2.
- Minimize downtime for the users.

Which four actions should you perform in sequence? To answer, move the appropriate actions from the list of actions to the answer area and arrange them in the correct order.

Actions	Answer Area
Decommission Server1.	
Import the printers on Server2.	
Deploy Windows Server Hybrid Cloud Print.	
Export the printers on Server1.	
Update the service principal name (SPN) of each printer.	
Modify GPO1.	

- A. Mastered
- B. Not Mastered

**Answer:** A

**Explanation:**

Graphical user interface, text, application, email Description automatically generated

Reference:

<https://docs.microsoft.com/en-us/archive/blogs/canitpro/step-by-step-migrating-print-servers-from-windows-ser>

**NEW QUESTION 29**

- (Exam Topic 3)

You have a server named Server1 that runs Windows Server and has the Hyper-V server role installed. You have a Hyper-V failover cluster named Cluster1. All servers are members of the same domain.

You need to ensure that you use Hyper-V Replica with Kerberos authentication on the default port to replicate virtual machines from Cluster1 to Server1.

What should you do on Server1?

- A. Add primary servers to the Hyper-V Replica Broker configuration.
- B. From Hyper-V Settings, select Enable incoming and outgoing live migrations
- C. From Windows Defender Firewall with Advanced Security, enable the Hyper-V Replica HTTPS Listener (TCP-In) rule.
- D. From Windows Defender Firewall with Advanced Security, enable the Hyper-V Replica HTTP Listener (TCP-In) rule.

**Answer:** D

**Explanation:**

Reference:

<https://docs.microsoft.com/en-us/windows-server/virtualization/hyper-v/manage/set-up-hyper-v-replica>

**NEW QUESTION 30**

- (Exam Topic 3)

You plan to deploy the Azure Monitor agent to 100 on-premises servers that run Windows Server. Which parameters should you provide when you install the agent?

- A. the client ID and the secret of an Azure service principal
- B. the name and the access key of an Azure Storage account
- C. a connection string for an Azure SQL database
- D. the ID and the key of an Azure Log Analytics workspace

**Answer:** D

**Explanation:**

Reference:

<https://docs.microsoft.com/en-us/windows-server/storage/storage-spaces/configure-azure-monitor>

**NEW QUESTION 35**

- (Exam Topic 3)

You have three servers named Server 1. Servers and Server3 that run Windows Server. The servers have the Hyper-V server role installed and are configured in a Storage Spaces Deed cluster named Cluster1.

Cluster1 hosts a virtual machine named VM1 that has Windows Admin Center Installed. You manage all servers and clusters by using Windows Admin Center.

You purchase an Azure subscription.

You need to configure email alerts in Azure Monitor for the following:

- Disk Capacity Utilization Over 80% for 10 Minutes
- Any critical alert in the cluster system event log
- Memory Utilization over 95% for 10 minutes

- Heartbeat fewer than 5 beats for 5 Minutes.
  - CPU Utilization over 85 % for 10 Minutes.
  - Any hearth service faults for the cluster
- The solution must use the minimum amount of administrative effort. What should you do?

- A. From Windows Admin Center, configure Azure Monitor and onboard clustered.
- B. From Azure portal, configure Azure Monitor and onboard Cluster1 by using Azure Arc.
- C. Configure Azure Monitor and manually install the Microsoft Monitoring Agent on Server1, Server2 and Server3

**Answer:** A

#### NEW QUESTION 40

- (Exam Topic 3)

You need to use a comma-separated value (CSV) file to import server inventory to Azure Migrate. Which fields are mandatory for each entry in the CSV file?

- A. Server nam
- B. Cores, OS Name, and Memory (in MB)
- C. Server name, IP adresse
- D. Disk 1 size (in GB), and CPU utilization percentage
- E. Server name, IP addresses, OS version, and Number of disks

**Answer:** B

#### NEW QUESTION 42

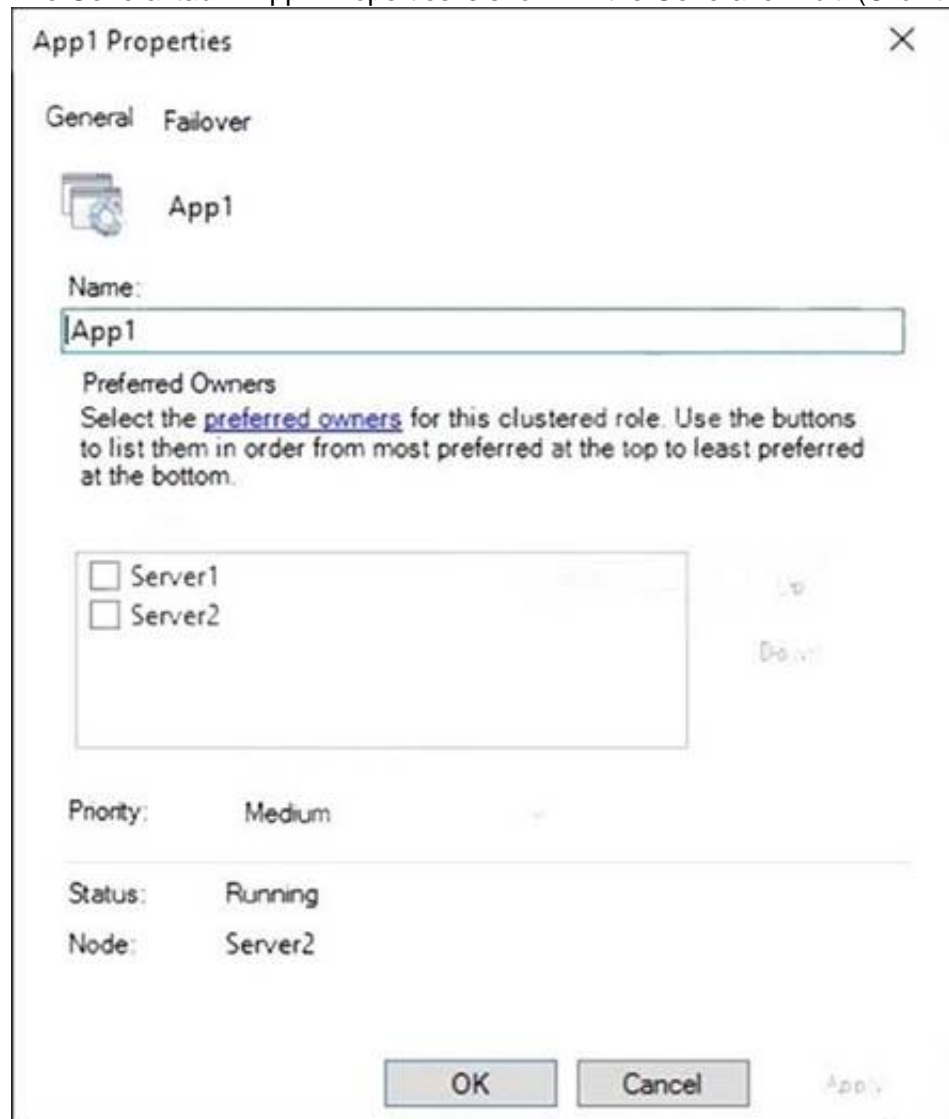
- (Exam Topic 3)

Note: This question is part of a series of questions that present the same scenario. Each question in the series contains a unique solution that might meet the stated goals. Some question sets might have more than one correct solution, while others might not have a correct solution.

After you answer a question in this section, you will NOT be able to return to it. As a result, these questions will not appear in the review screen.

You have a failover cluster named Cluster1 that hosts an application named App1.

The General tab in App1 Properties is shown in the General exhibit. (Click the General tab.)



App1 Properties

General Failover

App1

Name:  
App1

Preferred Owners  
Select the preferred owners for this clustered role. Use the buttons to list them in order from most preferred at the top to least preferred at the bottom.

☐ Server1  
☐ Server2

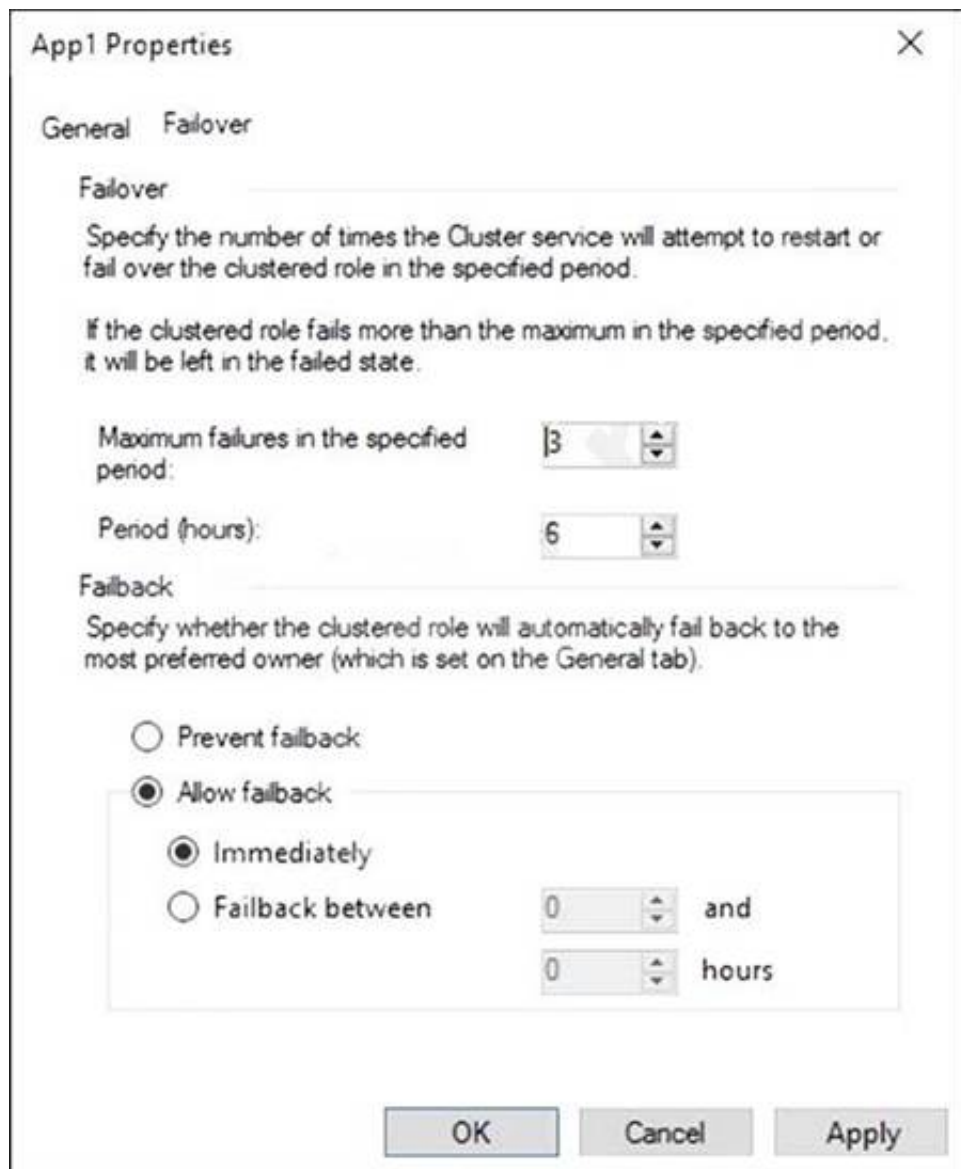
Priority: Medium

Status: Running

Node: Server2

OK Cancel Apply

The Failover tab in App1 Properties is shown in the Failover exhibit. (Click the Failover tab.)



**App1 Properties**

General Failover

**Failover**

Specify the number of times the Cluster service will attempt to restart or fail over the clustered role in the specified period.

If the clustered role fails more than the maximum in the specified period, it will be left in the failed state.

Maximum failures in the specified period: 3

Period (hours): 6

**Failback**

Specify whether the clustered role will automatically fail back to the most preferred owner (which is set on the General tab).

☐ Prevent failback

☒ Allow failback

☒ Immediately

☐ Failback between 0 and 0 hours

OK Cancel Apply

Server1 shuts down unexpectedly.

You need to ensure that when you start Server1, App1 continues to run on Server2. Solution: From the Failover settings, you select Prevent failback. Does this meet the goal?

- A. Yes
- B. No

**Answer: A**

**Explanation:**

The Prevent failback setting will prevent the cluster failing back to Server1.

**NEW QUESTION 45**

- (Exam Topic 3)

Note: This question is part of a series of questions that present the same scenario. Each question in the series contains a unique solution that might meet the stated goals. Some question sets might have more than one correct solution, while others might not have a correct solution.

After you answer a question in this section, you will NOT be able to return to it. As a result, these questions will not appear in the review screen.

You have a server named Server1 that runs Windows Server.

You need to ensure that only specific applications can modify the data in protected folders on Server1. Solution: From Virus & threat protection, you configure Controlled folder access. Does this meet the goal?

- A. Yes
- B. No

**Answer: A**

**Explanation:**

Reference:

<https://docs.microsoft.com/en-us/microsoft-365/security/defender-endpoint/customize-controlled-folders?view=>

**NEW QUESTION 46**

- (Exam Topic 3)

You have 200 Azure virtual machines.

You create a recovery plan in Azure Site Recovery to fail over all the virtual machines to an Azure region. The plan has three manual actions.

You need to replace one of the manual actions with an automated process. What should you use?

- A. an Azure Desired State Configuration (DSC) virtual machine extension
- B. an Azure Automation runbook
- C. an Azure PowerShell function
- D. a Custom Script Extension on the virtual machines

**Answer: B**

**Explanation:**

Reference:

<https://docs.microsoft.com/en-us/azure/site-recovery/recovery-plan-overview>

#### NEW QUESTION 50

- (Exam Topic 3)

Note: This question is part of a series of questions that present the same scenario. Each question in the series contains a unique solution that might meet the stated goals. Some question sets might have more than one correct solution, while others might not have a correct solution.

After you answer a question in this section, you will NOT be able to return to it. As a result, these questions will not appear in the review screen.

You have a server named Server1 that runs Windows Server.

You need to ensure that only specific applications can modify the data in protected folders on Server1. Solution: From App & browser control, you configure the Exploit protection settings.

Does this meet the goal?

- A. Yes
- B. No

**Answer: B**

#### Explanation:

Reference:

<https://docs.microsoft.com/en-us/microsoft-365/security/defender-endpoint/customize-controlled-folders?view=>

#### NEW QUESTION 53

- (Exam Topic 3)

You have three servers named Host1, Host2, and VM1 that run Windows Server. Host1 and Host2 have the Hyper-V server role installed. VM1 is a virtual machine hosted on Host1.

You configure VM1 to replicate to Host2 by using Hyper-V Replica.

Which types of failovers can you perform on VM1 on each host? To answer, select the appropriate options in the answer area.

NOTE: Each correct selection is worth one point.

VM1 on Host1:

Failover only
Test Failover only
Planned Failover only
Failover and Planned Failover only
Test Failover and Failover only

VM1 on Host2:

Failover only
Test Failover only
Planned Failover only
Failover and Planned Failover only
Test Failover and Failover only

- A. Mastered
- B. Not Mastered

**Answer: A**

#### Explanation:

Graphical user interface, text, application, chat or text message Description automatically generated

#### NEW QUESTION 57

- (Exam Topic 3)

Your network contains an on-premises Active Directory Domain Services (AD DS) domain named contos.com. The domain contains the accounts shown in the following table.

Name	Account type	In organizational unit (OU)
Admin1	User	OU1
Admin2	User	OU2
Server1	Computer	OU3
Server2	Computer	OU4

The domain is configured to store BitLocker recovery keys in Active Directory.

\* Admin1 turns on BitLocker Drive Encryption (BitLocker) for volume C on Server1.

\* Admin1 moves Server1 to OU1.

\* Admin2 turns on BitLocker for removable volume E on Server2.

\* Admin2 moves removable volume E from Server2 to Server1 and unlocks the volume.

On which Active Directory object can you each BitLocker recovery key? To answer, select the appropriate options in the answer area.

NOTE: Each correct selection is worth on point.



The BitLocker recovery key for volume C:

The BitLocker recovery key for key volume E:

- The BitLocker recovery key for volume C: Admin
- The BitLocker recovery for key volume E: contoso.com



msdeploy -verb:sync -source:	-dest:
apphostconfig="Site1"	apphostconfig="Site1"
apphostconfig="Site1",computername=Server1	apphostconfig="Site1",computername=Server1
apphostconfig="Site1",computername=Server2	apphostconfig="Site1",computername=Server2
package=c:\site1.zip	package=c:\site1.zip

- A. Mastered
- B. Not Mastered

Answer: A

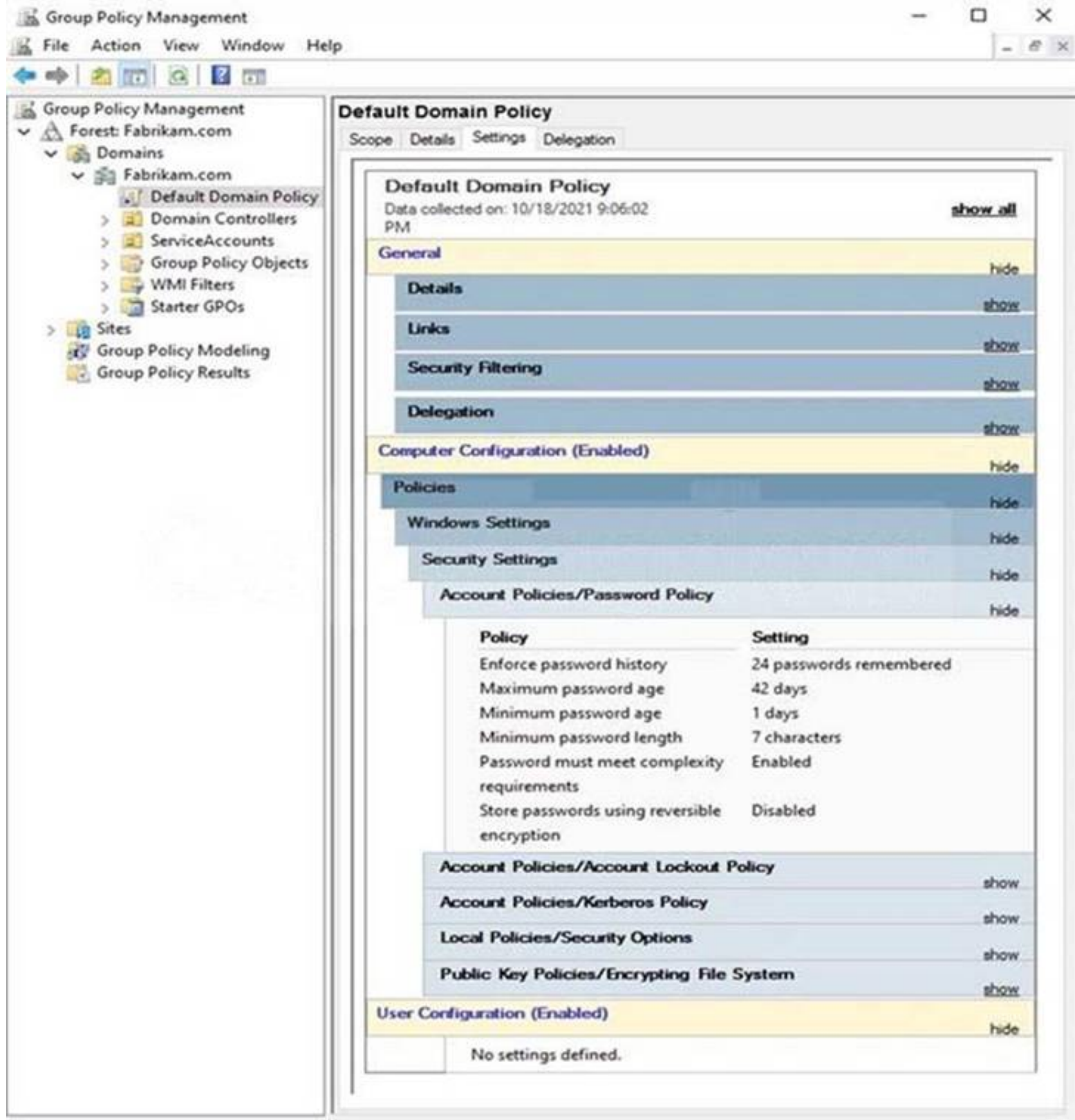
Explanation:

Reference:  
<https://docs.microsoft.com/en-us/iis/publish/using-web-deploy/synchronize-iis>

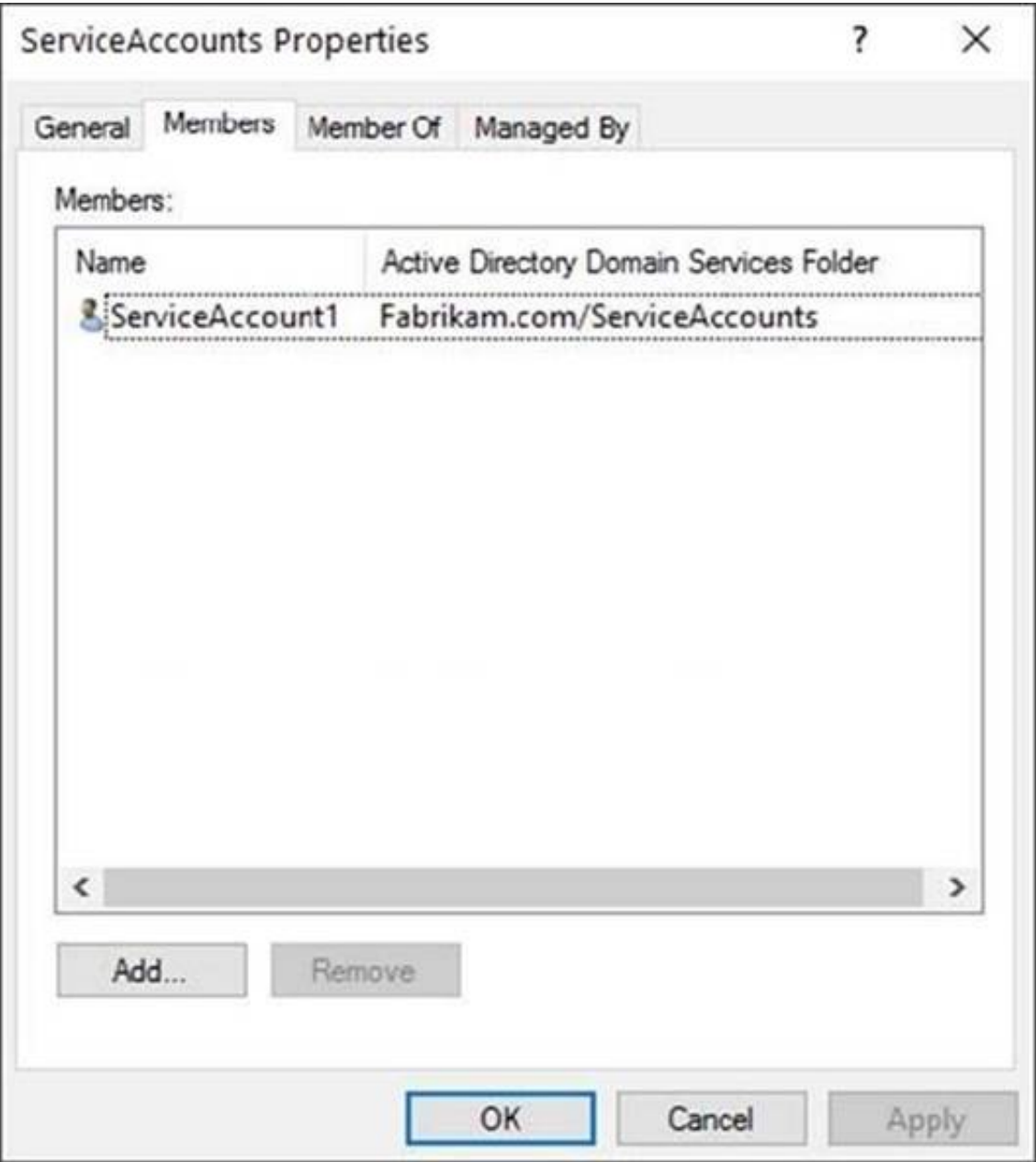
NEW QUESTION 68

- (Exam Topic 3)

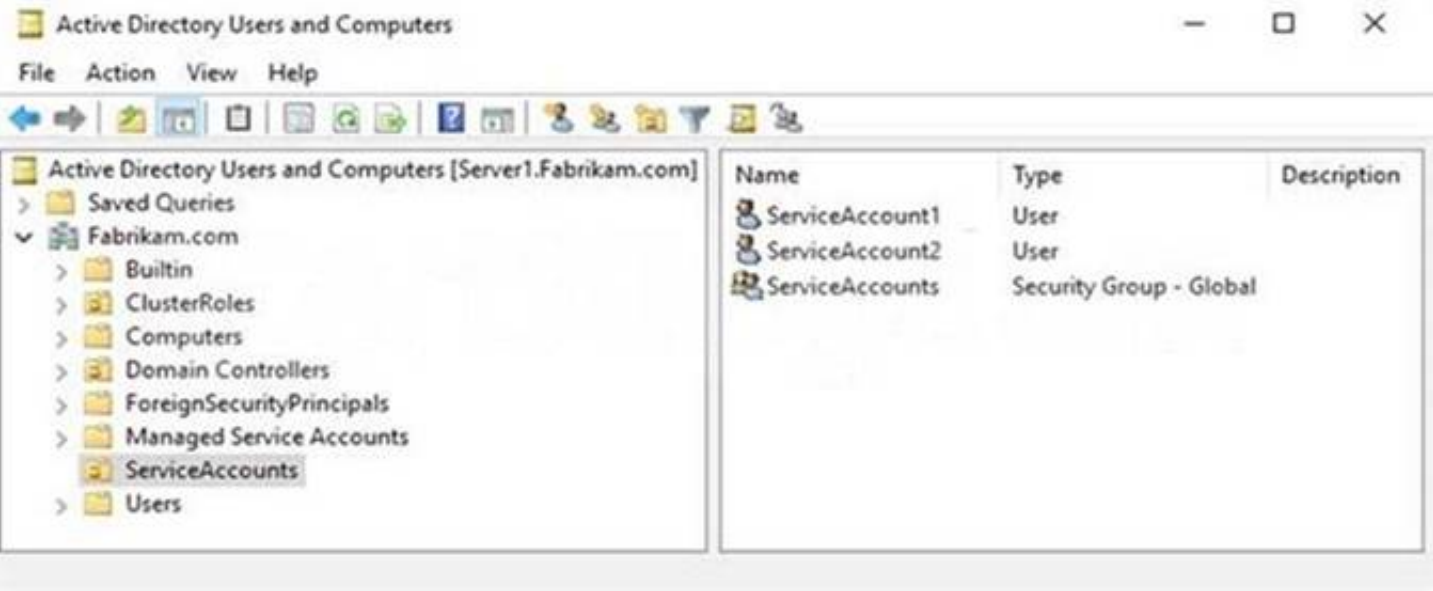
The Default Domain Policy Group Policy Object (GPO) is shown in the GPO exhibit. (Click the GPO tab.)



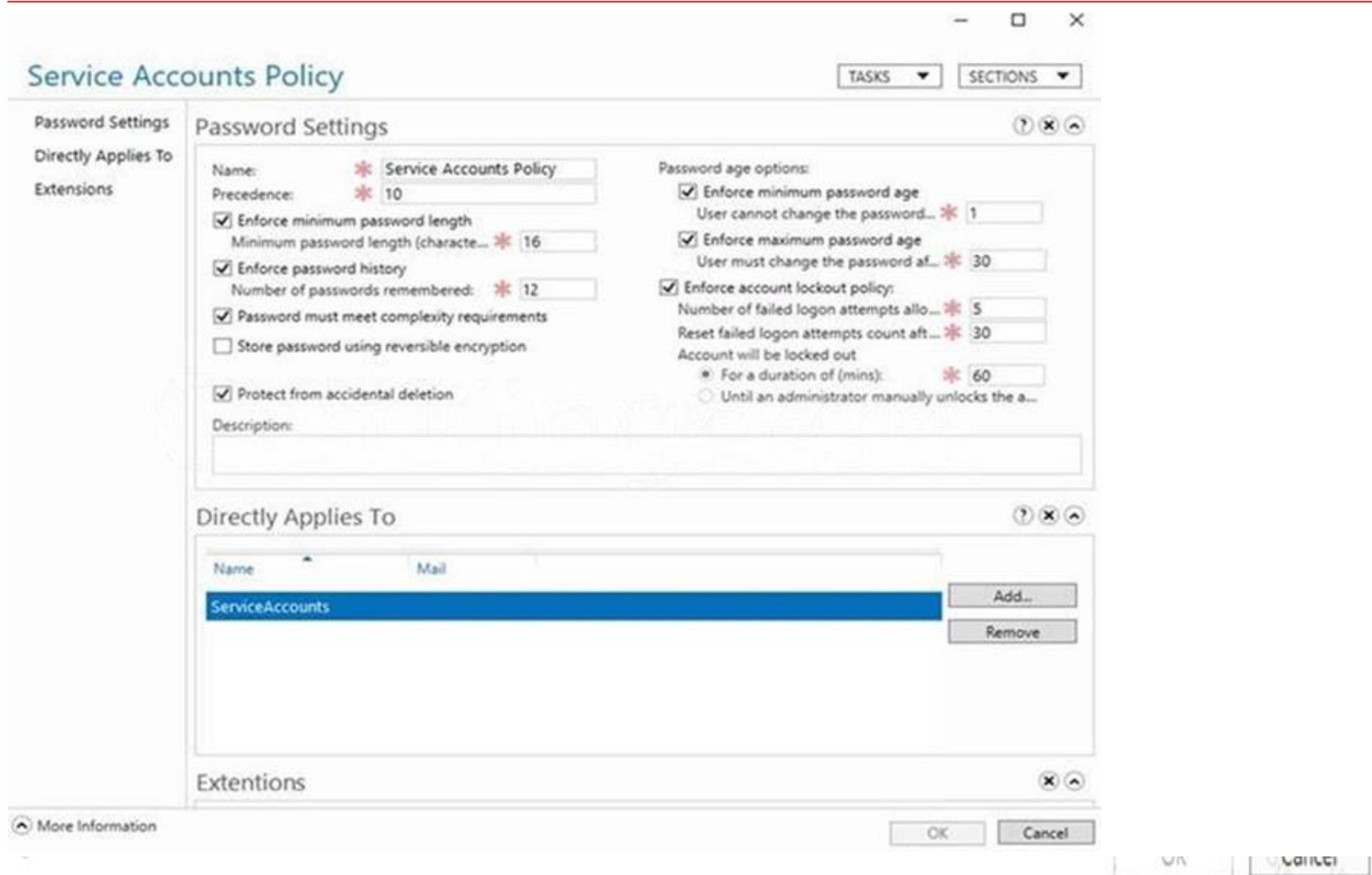
The members of a group named Service Accounts are shown in the Group exhibit. (Click the Group tab.)



An organizational unit (OU) named ServiceAccounts is shown in the OU exhibit. (Click the OU tab.)



You create a Password Settings Object (PSO) as shown in the PSO exhibit. (Click the PSO tab.)



**Service Accounts Policy**

**Password Settings**

Name: Service Accounts Policy

Precedence: 10

☒ Enforce minimum password length

Minimum password length (character): 16

☒ Enforce password history

Number of passwords remembered: 12

☒ Password must meet complexity requirements

☐ Store password using reversible encryption

☒ Protect from accidental deletion

Description:

**Password age options:**

☒ Enforce minimum password age

User cannot change the password... 1

☒ Enforce maximum password age

User must change the password af... 30

☒ Enforce account lockout policy:

Number of failed logon attempts allo... 5

Reset failed logon attempts count aft... 30

Account will be locked out

☒ For a duration of (mins): 60

☐ Until an administrator manually unlocks the a...

**Directly Applies To**

Name	Mail
ServiceAccounts	

Add... Remove

**Extentions**

More Information OK Cancel

For each of the following statements, select Yes if the statement is true. Otherwise, select No. NOTE: Each correct selection is worth one point.

Statements	Yes	No
The password of ServiceAccount1 must be at least 16 characters long.	<input type="radio"/>	<input type="radio"/>
The password of ServiceAccount2 must be at least 16 characters long.	<input type="radio"/>	<input type="radio"/>
Accounts that have the Service Accounts Policy applied can change their password to P@\$w0rd1.	<input type="radio"/>	<input type="radio"/>

- A. Mastered  
 B. Not Mastered

**Answer:** A

**Explanation:**

A screenshot of a computer Description automatically generated with medium confidence

Reference:

<https://docs.microsoft.com/en-us/windows-server/identity/ad-ds/get-started/adac/introduction-to-active-directory>

**NEW QUESTION 73**

- (Exam Topic 2)

You need to meet technical requirements for Share1. What should you use?

- A. Storage Migration Service  
 B. File Server Resource Manager (FSRM)  
 C. Server Manager  
 D. Storage Replica

**Answer:** A

**Explanation:**

Reference:

<https://docs.microsoft.com/en-us/windows-server/storage/storage-migration-service/overview>

**NEW QUESTION 75**

- (Exam Topic 2)

You need to meet the technical requirements for User1. To which group in contoso.com should you add User1?

- A. Domain Admins
- B. Account Operators
- C. Schema Admins
- D. Backup Operators

Answer: A

NEW QUESTION 76

- (Exam Topic 2)  
For each of the following statements, select Yes if the statement is true. Otherwise, select No.  
NOTE: Each correct selection is worth one point.

Statements	Yes	No
User1 can sign in to Server4 by using Remote Desktop.	<input type="radio"/>	<input type="radio"/>
User2 can sign in to Server4 by using Remote Desktop.	<input type="radio"/>	<input type="radio"/>
User3 can sign in to Server4 by using Remote Desktop.	<input type="radio"/>	<input type="radio"/>

- A. Mastered
- B. Not Mastered

Answer: A

Explanation:  
Text Description automatically generated

NEW QUESTION 80

.....

## Relate Links

**100% Pass Your AZ-801 Exam with ExamBible Prep Materials**

<https://www.exambible.com/AZ-801-exam/>

## Contact us

We are proud of our high-quality customer service, which serves you around the clock 24/7.

Viste - <https://www.exambible.com/>