

## 350-601 Dumps

# Implementing and Operating Cisco Data Center Core Technologies

<https://www.certleader.com/350-601-dumps.html>



**NEW QUESTION 1**

A customer needs a tool to take advantage of the CI/CD model to streamline its operation and optimize cost. The customer wants to integrate the solution with the cisco products it currently it currently uses, Including Cisco ACI networking and Cisco UCS servers. The solution should also provide on-premises Kubernetes and AppDynamics performance monitoring. Because of the security requirements, the solution not install a local client on products under management. which orchestration solution meets these requirements?

- A. Cisco APIC
- B. CISCO UCS director
- C. Cisco DCNM
- D. Cisco CloudCenter

**Answer: D**

**NEW QUESTION 2**

A network administrator must configure an extra keyring in Cisco UCS Manager. The key must provide a high level of encryption and secure authentication when users use the web interface. Which configuration command set must be applied to meet these requirements?

☒ **set https keyring kring7984**  
**set https cipher-suite-mode secure**  
**set https ssl-protocol tls1-2**  
**commit-buffer**

☐ **set https keyring kring7984**  
**set https cipher-suite-mode secure**  
**set https tls-protocol tls1-2**  
**commit-buffer**

☐ **set https keyring kring7984**  
**set https cipher-suite-mode high**  
**set https ssl-protocol tls1-2#**  
**commit-buffer**

☐ **set https keyring kring7984**  
**set https cipher-suite-mode high**  
**set https tls-protocol tls1-2**  
**commit-buffer**

- A. Option A
- B. Option B
- C. Option C
- D. Option D

**Answer: C**

**Explanation:**

[https://www.cisco.com/c/en/us/td/docs/unified\\_computing/ucs/ucs-manager/CLI-User-Guides/Admin-Managem](https://www.cisco.com/c/en/us/td/docs/unified_computing/ucs/ucs-manager/CLI-User-Guides/Admin-Managem) “cipher-suite-mode secure” is invalid command. “Cipher-suite-mode high” is valid command. “tls-protocol tls1-2” is invalid command. “Ssl-protocol tls1-2” is valid command.

```
UCS-A# scope system
```

```
UCS-A /system # scope services
```

```
UCS-A /system/services # enable https
```

```
UCS-A /system/services* # set https port 443
```

```
Warning: When committed, this closes all the web sessions.
```

```
UCS-A /system/services* # set https keyring kring7984
```

```
UCS-A /system/services* # set https cipher-suite-mode high
```

```
UCS-A /system/services* # set https ssl-protocol tls1-2
```

```
UCS-A /system/services* # commit-buffer
```

```
UCS-A /system/services #
```

**NEW QUESTION 3**

A company plans to migrate some of its services to the cloud. The company does not want to manage or control the underlying cloud infrastructure. It also wants to maintain control over the deployment of its applications and configuration settings of the application-hosting environment. Which cloud service model meets these requirements?

- A. Infrastructure as a Service
- B. Function as a Service
- C. Platform as a Service
- D. Software as a Service

**Answer: C**

**NEW QUESTION 4**

An engineer must configure a Cisco UCS domain for monitoring and management by the Cisco Intersight SaaS platform. After the setup is complete, administrators must have full control to configure the device through Cisco UCS Manager and Intersight. Which set of actions accomplishes this task?

- A. Configure Device Connector Access Mode as Allow Control in Device Console Claim the device on Intersight as UCSM Managed Mode.
- B. Configure Device Connector Access Mode as Allow Control in Cisco UCS Manager Claim the device on intersightc as Intersight Managed Mode
- C. Configure Device Connector Access Moao as Allow Control in Device Consol
- D. Claim the device on intersight as Intersight Managed Mode
- E. Configure Device Connector Access Mode as Allow Control in Cisco UCS Manager Claim the device on intersight as UCSM Managed Mode
- F. Option A
- G. Option B
- H. Option C
- I. Option D

**Answer:** C

**NEW QUESTION 5**

Which feature must be enabled to support the use of JSON and XML encoding when a Cisco Nexus 7000 series switch is deployed?

- A. NX-API
- B. LLDP
- C. Open Agent Container
- D. Bash shell

**Answer:** A

**Explanation:**

[https://www.cisco.com/c/en/us/td/docs/switches/datacenter/nexus7000/sw/programmability/guide/cisco\\_nexus7000\\_programmability\\_guide\\_8x/b-cisco-nexus7000-programmability-guide-8x\\_chapter\\_011.html](https://www.cisco.com/c/en/us/td/docs/switches/datacenter/nexus7000/sw/programmability/guide/cisco_nexus7000_programmability_guide_8x/b-cisco-nexus7000-programmability-guide-8x_chapter_011.html)

**NEW QUESTION 6**

A company is investigating different options for IT automation tools. The IT team has experience with python programming language and scripting using a declarative language. The proposed tool should be easy to set up and should not require installing an agent on target devices. The team will also need to build custom modules based on the python programming language to extend the tools functionality. Which automation tool should be used to meet these requirements?

- A. Puppet
- B. Ansible
- C. NX-API
- D. Chef

**Answer:** B

**NEW QUESTION 7**

Refer to the exhibit.

```
FI-1# scope org /
FI-1 /org # create maint-policy maintenance
FI-1 /org/maint-policy* # set reboot-policy timer-automatic
FI-1 /org/maint-policy* # set soft-shutdown-timer never
```

Which action must be taken before the maintenance policy can be committed?

- A. Set the soft shutdown timer to a specific time.
- B. Associate a service profile to the maintenance policy.
- C. Set the policy to apply the change on the next reboot.
- D. Specify a maintenance time by selecting a schedule.

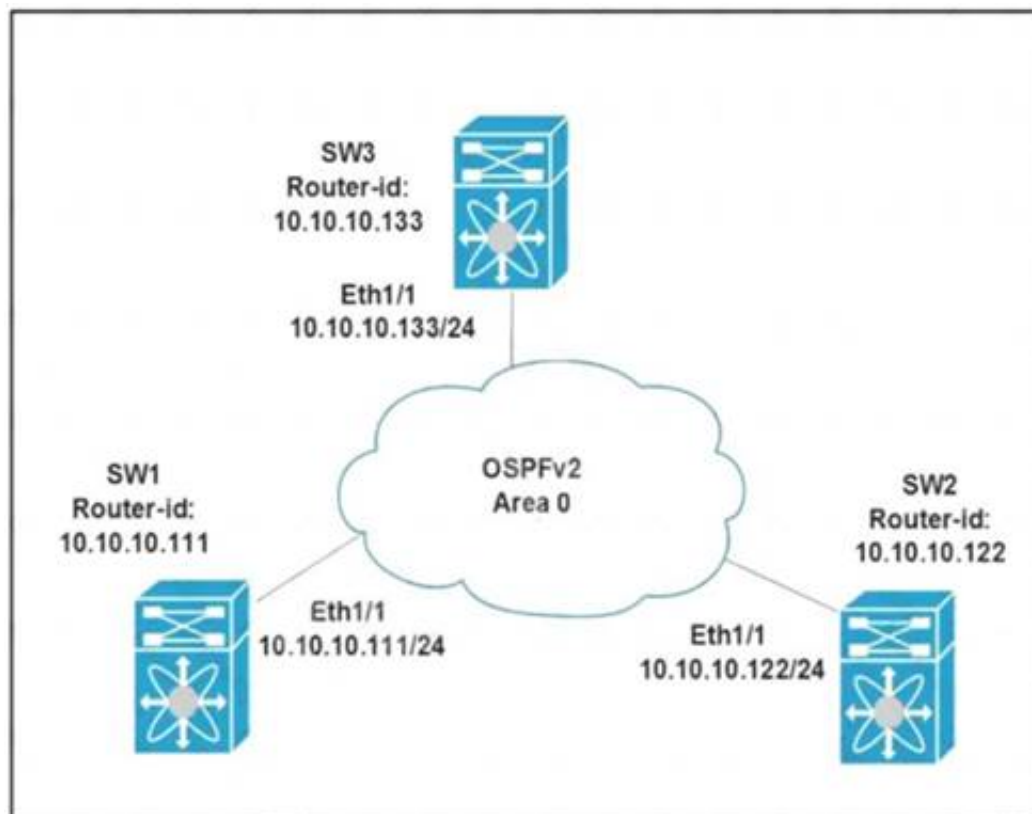
**Answer:** D

**Explanation:**

[https://www.cisco.com/c/en/us/td/docs/unified\\_computing/ucs/ucs-manager/CLI-User-Guides/Admin-Management/3-1/b\\_Cisco\\_UCS\\_Manager\\_CLI\\_Administration\\_Mgmt\\_Guide\\_3\\_1/b\\_Cisco\\_UCS\\_Manager\\_CLI\\_Administration\\_Mgmt\\_Guide\\_3\\_1\\_chapter\\_01100.html](https://www.cisco.com/c/en/us/td/docs/unified_computing/ucs/ucs-manager/CLI-User-Guides/Admin-Management/3-1/b_Cisco_UCS_Manager_CLI_Administration_Mgmt_Guide_3_1/b_Cisco_UCS_Manager_CLI_Administration_Mgmt_Guide_3_1_chapter_01100.html)

**NEW QUESTION 8**

Refer to the exhibit.



All switches are configured with the default OSPF priority. Which configuration should be applied to ensure that the SW2 Cisco Nexus switch controls the LSA floods and advertises the network to the remaining nodes in the OSPFv2 area?

- A. SW2# configure terminal SW2 (config)# interface ethernet 1/1 SW2 (config-if)# ip ospf priority 255
- B. SW2# configure terminal SW2 (config)# interface ethernet 1/1 SW2 (config-if)# ip ospf priority 1
- C. SW2# configure terminal SW2 (config)# router ospf 1 SW2 (config-router)# router-id 10.10.10.22
- D. SW2# configure terminal SW2 (config)# interface ethernet 1/1 SW2 (config-if)# ip ospf priority 0

**Answer:** A

**Explanation:**

Priority in OSPF is mainly used to influence/determine a designated router/back-up designated router for a network. By default, the priority is 1 on all routers. A router with a high priority will always win the DR/BDR election process.

**NEW QUESTION 9**

Drag and drop the firmware packages from the left onto the software bundles they belong to on the right.

Board controller firmware	Cisco UCS Infrastructure Software Bundle
BIOS firmware	
Kernel and system firmware for Fabric Interconnects	
CIMC firmware	Cisco UCS B-Series Blade Server Software Bundle
I/O module firmware	
Cisco UCS Manager software	

- A. Mastered
- B. Not Mastered

**Answer:** A

**Explanation:**

Diagram Description automatically generated

**NEW QUESTION 10**

Which statement about the MAC address that the FCoE Initialization Protocol chooses for use by an E-Node in an FCoE implementation is true?

- A. The FCoE Initialization Protocol uses the burned-in MAC address of the converged network adapter for all FCoE operations.
- B. The FCoE Initialization protocol uses a 24-bit FC-MAP and concatenates a 24-bit Fibre Channel ID to create a fabric-provided MAC address.
- C. The FCoE Initialization Protocol uses 01.00.0C as the first 24 bits of the MAC address and appends a 24-bit Fibre Channel ID to derive a full 48-bit FCoE MAC address.
- D. FCoE does not use a MAC address
- E. The FCoE Initialization Protocol is used to acquire a Fibre Channel ID, and the address is used for all FCoE communications in the same way as Fibre Channel

Protocol.

**Answer:** B

**Explanation:**

[https://www.cisco.com/c/en/us/td/docs/solutions/Enterprise/Data\\_Center/UF\\_FCoE\\_final.html#wp1154912](https://www.cisco.com/c/en/us/td/docs/solutions/Enterprise/Data_Center/UF_FCoE_final.html#wp1154912)

#### NEW QUESTION 10

An engineer configures port security on a Cisco MDS 9000 Series Switch. The MDS switch configuration must meet these requirements

- The switch must inmate the VSAN 4 port security database despite any conflicts.
- New devices must be statically added to the switch.
- Configuration changes for VSAN 4 must be applied throughout the fabric with any lodes on the fabric released

Which configuration set meets these requirements?

- ☐ port-security activate vsan 4  
no port-security auto-learn vsan 4  
port-security allocate  
port-security commit vsan 4
- ☐ port-security activate vsan 4  
port-security manual-learn vsan 4  
port-security allocate  
port-security commit
- ☐ port-security activate vsan 4 force  
port-security auto-learn vsan 4  
port-security distribute  
port-security commit
- ☐ port-security activate vsan 4 force  
no port-security auto-learn vsan 4  
port-security distribute  
port-security commit vsan 4

- A. Option A
- B. Option B
- C. Option C
- D. Option D

**Answer:** D

#### NEW QUESTION 12

A network engineer is deploying a cisco ALL-flash hyperflex solution. Which local storage configuration is required for the operating system and persistent logging?

- A. Two solid state drives
- B. Two SATA drives
- C. One SATA drive
- D. One solid state drive

**Answer:** D

#### NEW QUESTION 14

Which component is upgraded by using an EPLD upgrade on a Cisco Nexus 9000 Series Switch?

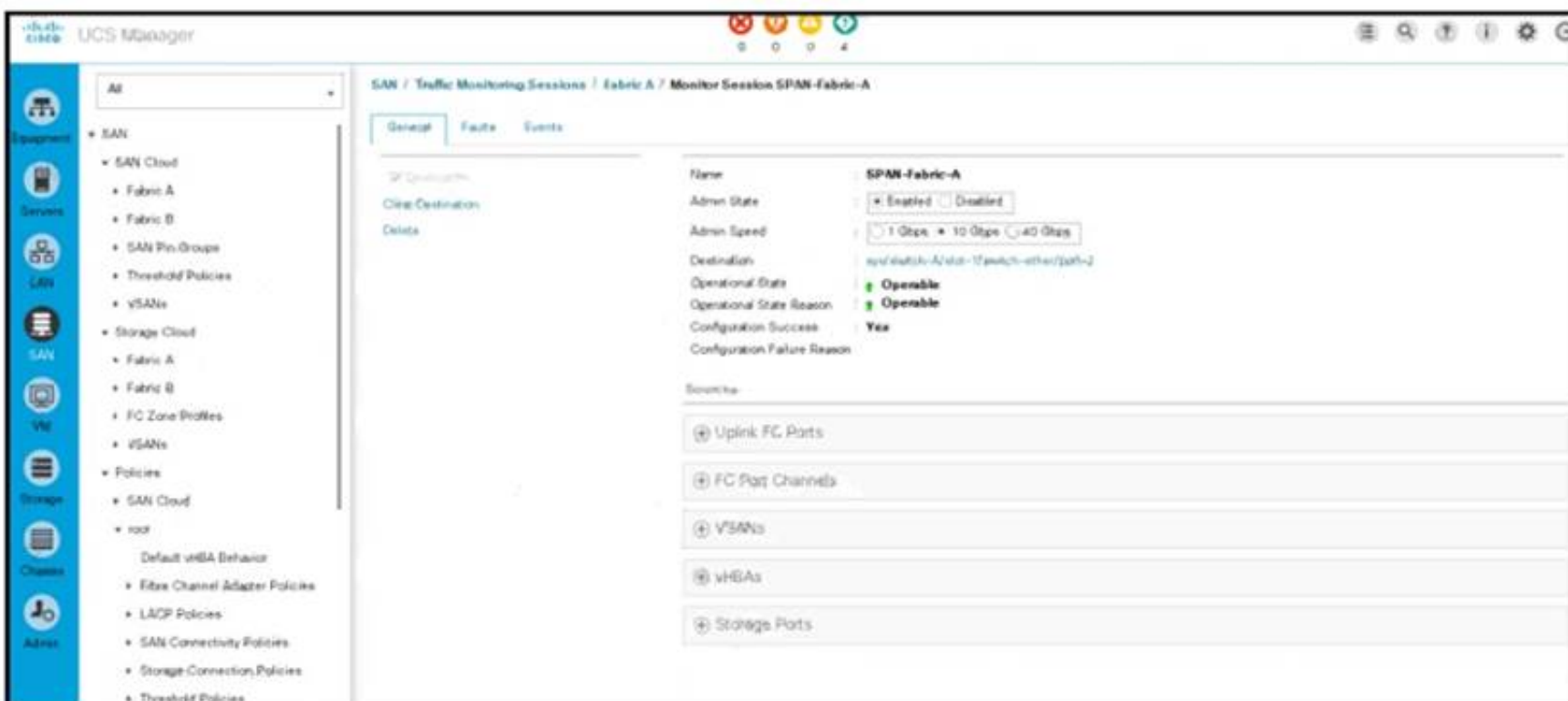
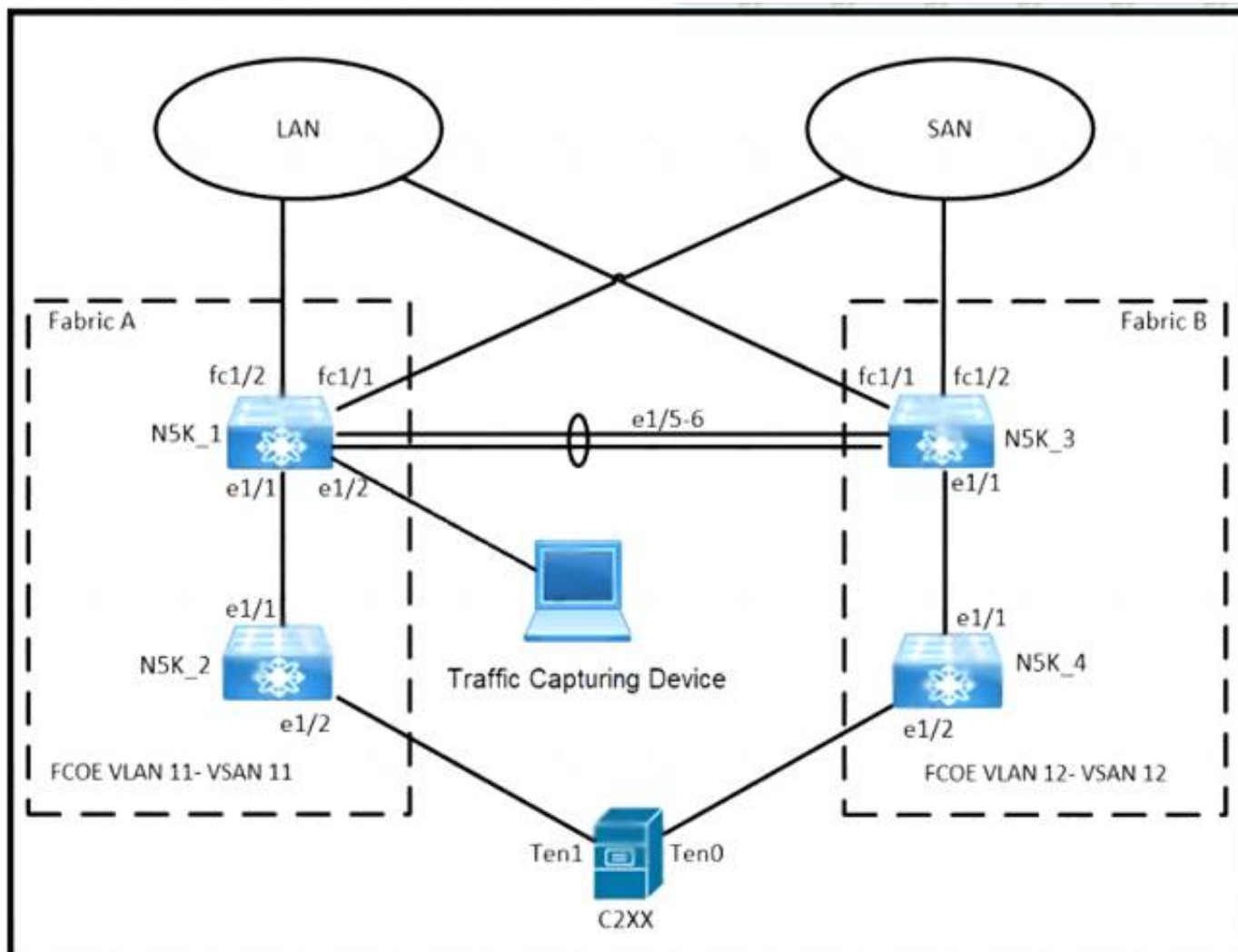
- A. dual-homed fabric extenders
- B. BIOS
- C. field-programmable gate arrays
- D. ISSU of the NX-OS version

**Answer:** C

#### NEW QUESTION 19

Refer to the exhibits





An engineer must implement a SPAN session that sends a copy of all VLAN 11 traffic on N5K\_1 to the Traffic Capturing Device. The configuration that is presented is already applied to the Cisco UCS Manager. Which additional action meets the objective?

- A. Assign the VLAN to the monitored port.
- B. Choose VLAN 11 under the VSANs section.
- C. Select the Clear Destination feature.
- D. Create a LAN traffic monitoring session.

**Answer: B**

#### NEW QUESTION 20

Which configuration generates a syslog message when CPU utilization is higher than 60%?

- A. event manager applet HIGH-CPUevent snmp oid 1.3.6.1.4.1.9.9.109.1.1.1.1.6.1 get-type exact entry-op gt 60 poll-interval 5 action 1.0 syslog priority notifications msg "cpu high"
- B. event manager applet HIGH-CPUevent snmp oid 1.3.6.1.4.1.9.9.109.1.1.1.1.6.1 get-type exact entry-op lt 60 poll-interval 5 action 1.0 syslog priority notifications msg "cpu high"
- C. event manager applet HIGH-CPUevent snmp oid 1.3.6.1.4.1.9.9.109.1.1.1.1.6.1 get-type next entry-op gt 60 poll-interval 5 action 1.0 syslog priority notifications msg "cpu high"
- D. event manager applet HIGH-CPUevent snmp oid 1.3.6.1.4.1.9.9.109.1.1.1.1.6.1 get-type next entry-op lt 60 poll-interval 5 action 1.0 syslog priority notifications msg "cpu high"

**Answer: A**

#### Explanation:

<https://www.cisco.com/c/en/us/support/docs/ip/internet-protocol-ip/200931-EEM-Subsystem-in-Order-to-Monitor-CPU-Tr.pdf>

<https://blog.ipospace.net/2008/06/generate-snmp-trap-on-high-cpu-load.html>

**NEW QUESTION 25**

Which two authentication types does Cisco UCS Manager support when configuration authentication? (Choose two.)

- A. local
- B. LDAP
- C. 802.1X
- D. Kerberos
- E. PAM

**Answer:** AB

**Explanation:**

[https://www.cisco.com/c/en/us/td/docs/unified\\_computing/ucs/ucs-manager/GUI-User-Guides/Admin-Management/3-2/b\\_Cisco\\_UCS\\_Admin\\_Mgmt\\_Guide\\_3\\_2/b\\_Cisco\\_UCS\\_Admin\\_Mgmt\\_Guide\\_3\\_2\\_chapter\\_0101.html](https://www.cisco.com/c/en/us/td/docs/unified_computing/ucs/ucs-manager/GUI-User-Guides/Admin-Management/3-2/b_Cisco_UCS_Admin_Mgmt_Guide_3_2/b_Cisco_UCS_Admin_Mgmt_Guide_3_2_chapter_0101.html)

**NEW QUESTION 30**

A network engineer needs to configure system logging on the MDS switch. The messages must be displayed with the severity level of "warning" and above. For security reasons the users must be logged out of the console after 5 minutes of inactivity Which configuration must be applied to meet these requirements?

- ☐ MDS-A(config)# logging console 5  
MDS-A(config-console)# exec-timeout 300
- ☒ MDS-A(config)# line console  
MDS-A(config-console)# speed 38400  
MDS-A(config-console)# exec-timeout 5  
MDS-A(config)# logging console 4
- ☐ MDS-A(config)# console  
MDS-A(config-console)# speed 38400  
MDS-A(config-console)# session-limit 5  
MDS-A(config)# logging console 5
- ☐ MDS-A(config)# logging line 4  
MDS-A(config-console)# session-limit 300

- A. Option A
- B. Option B
- C. Option C
- D. Option D

**Answer:** B

**Explanation:**

**DETAILED STEPS**

	Command or Action	Purpose
Step 1	configure terminal  Example:  switch# configure terminal switch(config)#	Enters global configuration mode.
Step 2	line console  Example:  switch# line console switch(config-console)#	Enters console configuration mode.
Step 3	databits <i>bits</i>  Example:  switch(config-console)# databits 7	Configures the number of data bits per byte. The range is from 5 to 8. The default is 8.
Step 4	exec-timeout <i>minutes</i>  Example:  switch(config-console)# exec-timeout 30	Configures the timeout for an inactive session. The range is from 0 to 525600 minutes (8760 hours). A value of 0 minutes disables the session timeout. The default is 30 minutes.

**NEW QUESTION 32**

Which data structure results from running this Python code?

```
>>> import json
>>> f = open('fname.json', 'r')
>>> var1 = json.load(f)
>>> var1
{'u'bd': u'bd1', u'ap': {u'epgs': [{u'name': u'app'}, {u'name': u'web'}, {u'name':
u'db'}], u'name': u'OnlineStore'}, u'name': u'39233259', u'pvn': u'pvn1'}
```

- A. tuple
- B. dictionary
- C. set
- D. list

**Answer:** B

#### NEW QUESTION 33

An engineer must configure RBAC in Cisco UCS Manager in an existing data center environment. Which two roles can be used to configure LAN Connectivity policies? (Choose two.)

- A. network-admin
- B. server-profile
- C. admin
- D. enable
- E. operations

**Answer:** AC

#### Explanation:

[https://www.cisco.com/c/en/us/td/docs/unified\\_computing/ucs/sw/gui/config/guide/1-4/UCSM\\_GUI\\_Configuration\\_Guide\\_1\\_4\\_chapter9.html](https://www.cisco.com/c/en/us/td/docs/unified_computing/ucs/sw/gui/config/guide/1-4/UCSM_GUI_Configuration_Guide_1_4_chapter9.html)  
[https://www.cisco.com/c/en/us/td/docs/unified\\_computing/ucs/ucsm\\_privileges/3-2/UCSM-Privileges-3\\_2/UCSM-Privileges-3\\_2\\_chapter\\_01.html](https://www.cisco.com/c/en/us/td/docs/unified_computing/ucs/ucsm_privileges/3-2/UCSM-Privileges-3_2/UCSM-Privileges-3_2_chapter_01.html)

#### NEW QUESTION 37

The engineer must configure SPAN on a Cisco Nexus 5000 Series switch to get a capture of the traffic from these applications for an in-depth packet analysis. Which two characteristics must be considered? (Choose two.)

- A. The Ethernet, FC, vFC, port channel, SAN port channel can be used as SPAN source ports.
- B. The rx/tx option is available for VLAN or VSAN SPAN sessions.
- C. SPAN source port can be monitored in multiple SPAN sessions.
- D. Only Ethernet, FC, vFC, port channel port types can be a destination SPAN port.
- E. A SPAN source port cannot be a destination SPAN port.

**Answer:** AE

#### Explanation:

[https://www.cisco.com/en/US/docs/switches/datacenter/nexus5000/sw/configuration/guide/cli\\_rel\\_4\\_1/Cisco\\_N](https://www.cisco.com/en/US/docs/switches/datacenter/nexus5000/sw/configuration/guide/cli_rel_4_1/Cisco_N)

#### NEW QUESTION 42

After a Cisco Nexus 7000 Series Switch chassis replacement, the administrator discovers that all vPC-enabled LACP port channels are reinitialized. The administrator wants to prevent this issue the next time the chassis is replaced. Which two actions must be taken to meet this requirement before the isolated device is reloaded? (Choose two)

- A. Set the vPC MAC address to a lower value than the peer
- B. Change the vPC system-priority of the replacement chassis to a higher value than the peer if.
- C. Change the vPC system-priority of the replacement chassis to a lower value than the peer.
- D. Set the vPC MAC address to a higher value than the peer
- E. Configure auto-recovery to the disable state on both peers

**Answer:** BE

#### Explanation:

[https://www.cisco.com/c/en/us/td/docs/switches/datacenter/nexus9000/sw/6-x/interfaces/configuration/guide/b\\_-----](https://www.cisco.com/c/en/us/td/docs/switches/datacenter/nexus9000/sw/6-x/interfaces/configuration/guide/b_-----)  
<https://community.cisco.com/t5/networking-documents/vpc-auto-recovery-feature-in-nexus-7000/ta-p/3123651>



## vPC and LACP

The Link Aggregation Control Protocol (LACP) uses the system MAC address of the vPC domain to form the LACP Aggregation Group (LAG) ID for the vPC.

You can use LACP on all the vPC EtherChannels, including those channels from the downstream switch. We recommend that you configure LACP with active mode on the interfaces on each EtherChannel on the vPC peer switches. This configuration allows you to more easily detect compatibility between switches, unidirectional links, and multihop connections, and provides dynamic reaction to run-time changes and link failures.

The vPC peer link supports 16 EtherChannel LACP interfaces. You should manually configure the system priority on the vPC peer-link switches to ensure that the vPC peer-link switches have a **higher LACP priority** than the downstream connected switches. **A lower numerical value system priority means a higher LACP priority.**

### NEW QUESTION 47

A network engineer must perform a backup and restore of the Cisco Nexus 5000 Series Switch configuration. The backup must be made to an external backup server. The only protocol permitted between the Cisco Nexus switch and the backup server is UDP. The backup must be used when the current working configuration of the switch gets corrupted. Which set of steps must be taken to meet these requirements?

- A. \* 1 Perform a startup-config backup to an FTP server.\* 2 Copy startup-config in the boot flash to the running-config file
- B. \* 1 Perform a running-config backup to an SFTP server\* 2 Copy backup-config from the SFTP server to the running-config file
- C. \* 1 Perform a running-config backup to an SCP server\* 2 Copy running-config in the boot flash to the running-config file
- D. \* 1 Perform a startup-config backup to a TFTP server\* 2 Copy backup-config from the backup server to the running-config file

**Answer:** D

#### **Explanation:**

TFTP is the only protocol that uses UDP. FTP, SFTP, and SCP use TCP.

### NEW QUESTION 49

Which method must a network engineer use to upgrade the BIOS firmware of a Cisco UCS standalone C-Series rack-mount server?

- A. Use the Cisco host upgrade utility.
- B. Use the Cisco hardware upgrade utility.
- C. Use the Cisco host firmware policy.
- D. Use the U-ACPI Interface.

**Answer:** A

### NEW QUESTION 54

A server engineer wants to control power usage on a Cisco UCS C-Series rack server down to the component level. Which two components support specific power limits? (Choose two.)

- A. storage controller
- B. network controller
- C. processor
- D. graphic card
- E. memory

**Answer:** CE

#### **Explanation:**

[https://www.cisco.com/c/en/us/td/docs/unified\\_computing/ucs/c/sw/gui/config/guide/4\\_1/b\\_Cisco\\_UCS\\_C-serie](https://www.cisco.com/c/en/us/td/docs/unified_computing/ucs/c/sw/gui/config/guide/4_1/b_Cisco_UCS_C-serie)

### NEW QUESTION 56

Due to a newly announced security advisory, a company has been Informed that they must update the configuration of 500 network devices that are deployed in their network. The engineering team must assist the operations team to prepare for this update. The operations team does not have direct access to the network devices and must log in via a Linux server. This is the first time that the team is making a network-wide configuration and must change all devices without first installing additional software on the network devices. The operations team is unfamiliar with automation and scripting technologies. Which automation tool must be used to accomplish this goal?

- A. Chef
- B. Ansible
- C. Puppet
- D. Saltstack

**Answer:** B

### NEW QUESTION 59

Refer to Exhibit:

```
n9k2# guestshell
[guestshell@guestshell ~]$ python
Python 2.7.5 (default, Jun 17 2014, 18:11:42)
[GCC 4.8.2 20140120 (Red Hat 4.8.2-16)] on linux2
Type "help", "copyright", "credits" or "license" for more information.
>>>
```

An engineer must use the python module in the guest shell of the Cisco Nexus 9000 Series switch to shutdown port Ethernet 1/4 Which command set will accomplish this?

- ☐ from cli import \*  
cli("conf t")  
cli("interface eth1/4")  
cli("shutdown")
- ☐ from cli import \*  
cli("conf t ; interface eth1/4 ; shut")
- ☒ from cisco import cli  
cli("conf t ; interface eth1/4")  
cli("shutdown")
- ☐ from cisco import cli  
cli("conf t" ; "interface eth1/4" ; "shut")

- A. Option A
- B. Option B
- C. Option C
- D. Option D

**Answer: B**

**Explanation:**

When two or more commands are run individually, the state is not persistent from one command to subsequent commands.

In the following example, the second command fails because the state from the first command does not persist for the second command.

```
>>> cli("conf t")
>>> cli("interface eth4/1")
```



When two or more commands are run together, the state is persistent from one command to subsequent commands.

In the following example, the second command is successful because the state persists for the second and third commands.

```
>>> cli("conf t ; interface eth4/1 ; shut")
```



**Note**

Commands are separated with " ; " as shown in the example. The semicolon ( ; ) must be surrounded with single blank characters.

[https://www.cisco.com/c/en/us/td/docs/switches/datacenter/nexus9000/sw/7-x/programmability/guide/b\\_Cisco\\_Nexus\\_9000\\_Series\\_NX-OS\\_Programmability\\_Guide\\_7x/Python\\_API.html](https://www.cisco.com/c/en/us/td/docs/switches/datacenter/nexus9000/sw/7-x/programmability/guide/b_Cisco_Nexus_9000_Series_NX-OS_Programmability_Guide_7x/Python_API.html) <https://www.ciscolive.com/c/dam/r/ciscolive/apjc/docs/2016/pdf/DEVNET-1077.pdf>

#### NEW QUESTION 61

An engineer is implementing the Cisco ACI fabric and wants to reduce the amount of TCAM resources consumed by the fabric The engineer also needs to ensure that all EPGs in a VRF consume the same services Which action should be taken to meet these requirements?

- A. Configure a single contract provided and consumed in all EPGs
- B. Configure preferred groups in the VRF for all EPGs
- C. Implement an unenforced VRF
- D. Implement vzAny feature

**Answer: A**

#### NEW QUESTION 62

An engineer must send JSON encoded telemetry data to an external collector. The transport mechanism must prevent tampering or forgery of the data. Which protocol accomplishes this goal?

- A. GPB
- B. HTTP
- C. gRPC
- D. DTLS

**Answer:** B

#### NEW QUESTION 64

An engineer must shut down the Ethernet 1/2 interface when the Ethernet 4/5 interface state is down. Drag and drop the CLI commands from the bottom onto the blanks in the exhibit to implement this EEM. Not all commands are used.

```
switch# configure terminal
switch(config)# track 1 
switch(config-track)# end

switch(config)# event manager applet track_4_5_down
switch(config-applet)# event track 1 state down
switch(config-applet)# action 1 syslog msg EEM applet
track_4_5_down shutting down port eth1/2 due to eth4/5
being down
switch(config-applet)# action 2 cli conf term
switch(config-applet)# action 3 cli 
switch(config-applet)# action 4 cli 
switch(config-applet)# end
```

interface ethernet 1/2

interface ethernet 4/5

no shut

shut

- A. Mastered
- B. Not Mastered

**Answer:** A

#### Explanation:

Text Description automatically generated

#### NEW QUESTION 65

Where is the witness deployed in a two-node Cisco HyperFlex Edge deployment?

- A. to the HyperFlex Edge two-node cluster
- B. to an additional server with network access to HyperFlex Edge
- C. to a third-party cloud provider
- D. to Cisco Intersight

**Answer:** D

#### Explanation:

The Cisco HyperFlex Edge invisible cloud witness is only required for 2-node HX Edge deployments. correct, it has to connect to Intersight as it is a CLOUD invisible witness as per the document shared: The Cisco HyperFlexEdge invisiblecloud witnessis only requiredfor 2-nodeHX Edge deployments. The witness does not require any additional infrastructure, setup, configuration, backup, patching ,or management of any kind. This feature is automatically configured as part of a 2-node Hyper Flex Edge installation. Outbound access at the remote site must be present for connectivity to Intersight (eitherIntersight.com or to the Intersight Virtual Appliance). HyperFlexEdge 2-nodeclusters cannot operate without this connectivity in place [https://www.cisco.com/c/en/us/td/docs/hyperconverged\\_systems/HyperFlex\\_HX\\_DataPlatformSoftware/Edge\\_Deployment\\_Guide/b\\_HyperFlex\\_Edge\\_Deployment\\_Guide\\_4\\_0.pdf](https://www.cisco.com/c/en/us/td/docs/hyperconverged_systems/HyperFlex_HX_DataPlatformSoftware/Edge_Deployment_Guide/b_HyperFlex_Edge_Deployment_Guide_4_0.pdf)

#### NEW QUESTION 69

When deploying a Cisco HyperFlex edge with a pair of switches, what is the minimum number of interfaces in trunk mode required on each HX node?

- A. 1
- B. 2
- C. 4
- D. 6

**Answer:** B

#### NEW QUESTION 72

Drag and drop the NAS and NFS concepts from the left onto the definitions on the right.



Data storage and file sharing requests are sent and received.	NFS
The protocol is regularly used on Linux and UNIX systems.	
Software is deployed on a lightweight OS that is embedded in the hardware.	NAS
The vendor-agnostic protocol is supported on any hardware and OS.	

- A. Mastered
- B. Not Mastered

Answer: A

Explanation:

NFS

Data storage and file sharing requests are sent and received The protocol is regularly used on Linux segment

NAS

Software is deployed on a lightweight OS that is embedded in the hardware The vendor-agnostic protocol is supported on any hardware and OS

NEW QUESTION 74

Refer to the exhibit.

```
CISCO-UCS-A# scope org /
CISCO-UCS-A /org* # create service-profile Cisco1 instance
CISCO-UCS-A /org/service-profile* # set bios-policy bios1
CISCO-UCS-A /org/service-profile* # set boot-policy boot1
CISCO-UCS-A /org/service-profile* # set ext-mgmt-ip-state none
CISCO-UCS-A /org/service-profile* # set host-fw-policy ipmi-user987
CISCO-UCS-A /org/service-profile* # set identity dynamic-uuid derived
CISCO-UCS-A /org/service-profile* # set ipmi-access-profile ipmi1
CISCO-UCS-A /org/service-profile* # set local-disk-policy local1
CISCO-UCS-A /org/service-profile* # set maint-policy maint1
CISCO-UCS-A /org/service-profile* # set mgmt-fw-policy mgmt1
CISCO-UCS-A /org/service-profile* # set power-control-policy power1
CISCO-UCS-A /org/service-profile* # set scrub-policy scrub1
CISCO-UCS-A /org/service-profile* # set sol-policy sol1
CISCO-UCS-A /org/service-profile* # set stats-policy stats1
CISCO-UCS-A /org/service-profile* # set user-label Cisco
CISCO-UCS-A /org/service-profile* # vcon-policy vconnpolicy
CISCO-UCS-A /org/service-profile* # commit-buffer
CISCO-UCS-A /org/service-profile #
```

What is a characteristic presented in the service profile of the UUID?

- A. based on the hardware
- B. vendor assigned
- C. unique system generated
- D. allocated from a UUID pool

Answer: A

Explanation:

there is no parameter for 'set identity dynamic-uuid' to specify a pool name - you can only state "derived" or a 32 hex character string (128-bits, therefore full UUID).

ucspe /org/service-profile # set identity dynamic-uuid derived Derived

FFFFFFFF-FFFF-FFFF-FFFF-FFFFFFFFFFFFFF Dynamic UUID

The documentation, as usual for Cisco, is poor. Shagua references old v1.4.1 documentation but it's the same in 4.1. It's inaccurate as uuid-pool should now read uuid-suffix-pool. You can use UCSPE to check

the CLI with contextual help.

ucspe /org/service-profile # set identity dynamic-uuid Dynamic UUID dynamic-wwnn Dynamic WWNN uuid-suffix-pool UUID Suffix Pool wwnn-pool WWNN Pool

If set identity dynamic-uuid only gives us the option of a static UUID or the parameter "derived", and set identity uuid-suffix-pool is the option to assign a pool... I

would suggest that the most logical answer here is

- derived from the hardware. [https://www.cisco.com/en/US/docs/unified\\_computing/ucs/sw/cli/config/guide/1.4.1/CLI\\_Config\\_Guide\\_1\\_4\\_1](https://www.cisco.com/en/US/docs/unified_computing/ucs/sw/cli/config/guide/1.4.1/CLI_Config_Guide_1_4_1)

NEW QUESTION 76

An engineer must configure a Cisco MDS 9000 Series Switch for traffic analysis from the storage array. The storage array is connected to the interface fc2/1 in VSAN 10 and the traffic analyzer to fc4/2. The capture file must include ingress and egress traffic between the switch and the storage array. Also, only traffic in



VSAN 10 must be captured. Which configuration set meets these requirements?

A)

```
interface fc4/2
  switchport mode auto
  no shutdown
!
span session 1
  source interface fc2/1 rx
  destination interface fc4/2
  source filter vsan 10
  no suspend
```

B)

```
interface fc4/2
  switchport mode trunk
  switchport trunk allow vsan 10
  no shutdown
!
span session 1
  source interface fc2/1 tx
  destination interface fc4/2 rx
  no suspend
```

C)

```
interface fc4/2
  switchport mode SD
  no shutdown
!
span session 1
  source interface fc2/1
  destination interface fc4/2
  source filter vsan 10
```

D)

```
interface fc4/2
  switchport mode ST
  no shutdown
!
span session 1
  source interface fc2/1
  destination interface fc4/2
  source filter vsan 10
```

- A. Option A
- B. Option B
- C. Option C
- D. Option D

**Answer:** A

#### NEW QUESTION 79

Which configuration statically assigns VSAN membership to a virtual Fibre Channel interface?

- A. switch(config-vsan-cb)># vsan 100 bind interface fc 3/1
- B. switch<config-vsan-db)# vsan 100 bind interface vfc 31
- C. switch(config-vsan-db)># vsan 100 fc 3/1
- D. switch(config-vsan-db)# vsan 100 interface vfc 31

**Answer:** D

**Explanation:**

<https://www.cisco.com/c/en/us/td/docs/switches/datacenter/nexus5000/sw/configuration/guide/cli/CLIConfigurationGuide/vsan.html>

**NEW QUESTION 82**

What is an advantage of streaming telemetry over SNMP?

- A. on-change traps sent to a receiver
- B. periodic push-based subscription messages
- C. periodic polling of the device status
- D. MD5-based authentication on polling

**Answer:** B

**NEW QUESTION 84**

A network engineer connects the CNA interface of a server to a switch. The switch must bring down all of the VLANs on the interface that are not enabled for FCoE, but the VLANs that are enabled for FCoE should continue to carry SAN traffic without interruption. Which configuration should be applied to the switch to achieve this objective?

- A. switch(config)# interface Ethernet 2/1 switch(config-if)# shutdown lan
- B. switch(config)# interface vfc 2 switch(config-if)# shutdown lan
- C. switch(config)# Interface Ethernet vfc 2 switch(config-if)# shutdown force
- D. switch(config)# interface Ethernet 2/1 switch(config-if)# shutdown force

**Answer:** A

**NEW QUESTION 88**

An engineer deploys a new Cisco Nexus 5000 Series Switch in an existing environment with strict security policies. The new device should meet these requirements:

- Secure end-user ports with minimum configuration effort.
- Log security breaches and require manual recovery.
- Retain the switch configuration if the device restarts.

Which configuration must be used?

- A.

```
switchport port-security
switchport port-security max 1
switchport port-security violation shutdown
```
- B.

```
switchport port-security
switchport port-security violation shutdown
switchport port-security mac-address dynamic
```
- C.

```
switchport port-security
switchport port-security max 1
switchport port-security mac-address sticky
```
- D.

```
switchport port-security
switchport port-security violation restrict
switchport port-security mac-address sticky
```

**Answer:** C

**NEW QUESTION 92**

An engineer must configure a named VSAN when the fabric interconnect is in Fibre Channel switch mode. The VSAN must meet these requirements:

- Named VSAN must be called "VSAN 10".
- VSAN ID must be 10.
- FCoE ID must be 20.
- VSAN 10 must be attached to port 2 in slot 1.

Which command set configures a VSAN when the fabric interconnect is in Fibre Channel switch mode?



- Ⓐ UCS-A# scope fc-storage  
UCS-A/fc-storage# create vsan VSAN10 10 20  
UCS-A /fc-storage/vsan # create member-port fcoe a 1 2  
UCS-A /fc-storage/vsan/member-port\* # commit-buffer
- Ⓑ UCS-A# scope fc-traffic-mon  
UCS-A/fc-storage# create vsan VSAN10 20 10  
UCS-A /fc-storage/vsan # create member-port fcoe a 2 1  
UCS-A /fc-storage/vsan/member-port\* # commit-buffer
- Ⓒ UCS-A# scope eth-storage  
UCS-A/fc-storage# create vsan VSAN10 10 20  
UCS-A /fc-storage/vsan # create member-port fcoe a 2 1  
UCS-A /fc-storage/vsan/member-port\* # commit-buffer
- Ⓓ UCS-A# scope fc-uplink  
UCS-A/fc-storage# create vsan VSAN10 20 10  
UCS-A /fc-storage/vsan # create member-port fcoe a 1 2  
UCS-A /fc-storage/vsan/member-port\* # commit-buffer

- A. Option A
- B. Option B
- C. Option C
- D. Option D

**Answer:** A

#### NEW QUESTION 97

Refer to the exhibit.

```
Nexus# show vpc peer-keepalive | i Keepalive
--Keepalive interval : 1000 msec
--Keepalive timeout : 5 seconds
--Keepalive hold timeout : 3 seconds
--Keepalive vrf : management
--Keepalive udp port : 3200
--Keepalive tos : 192

Nexus# ethanalyzer local interface mgmt limit-captured-frames 1000

Capturing on mgmt0
2019-06-15 12:01:51.242597 192.168.254.11 -> 192.168.254.3 ICMP Echo (ping) request
2019-06-15 12:01:51.242860 192.168.254.3 -> 192.168.254.11 ICMP Echo (ping) reply
2019-06-15 11:50:15.975474 192.168.254.1 -> 192.168.254.3 TCP 47540 > bootps [SYN] Seq=0 Win=1024 Len=0 MSS=1460
2019-06-15 11:50:15.975547 192.168.254.3 -> 192.168.254.1 TCP 29 > 47540 [RST, A CK] Seq=1 Ack=1 Win=0 Len=0
2019-06-15 11:50:15.975564 192.168.254.1 -> 192.168.254.3 TCP 47540 > 44 [SYN] Seq=0 Win=1024 Len=0 MSS=1460
2019-06-15 11:50:15.975924 192.168.254.1 -> 192.168.254.3 TCP 47540 > discard [SYN] Seq=0 Win=1024 Len=0 MSS=1460
2019-06-15 11:50:15.976027 192.168.254.1 -> 192.168.254.3 TCP 47540 > 97 [SYN] Seq=0 Win=1024 Len=0 MSS=1460
2019-06-15 11:50:15.976381 192.168.254.1 -> 192.168.254.3 TCP 47540 > 35 [SYN] Seq=0 Win=1024 Len=0 MSS=1460
2019-06-15 11:50:16.661845 192.168.254.3 -> 192.168.254.4 UDP Source port: 3200 Destination port: 3200
2019-06-15 11:50:16.761147 00:8e:73:a2:41:13 -> 01:80:c2:00:00:00 STP Conf. Root = 8192/10/ec:e1:a9:df:6c:80 Cost = 22 Port = 0x8013
2019-06-15 11:50:16.853248 192.168.254.4 -> 192.168.254.3 UDP Source port: 3200 Destination port: 3200
2019-06-15 11:50:17.326253 192.168.254.1 -> 192.168.254.3 SSH Encrypted request packet len=52
2019-06-15 11:50:17.327313 192.168.254.3 -> 192.168.254.1 SSH Encrypted response packet len=1348
2019-06-15 11:50:17.377246 192.168.254.4 -> 239.255.70.83 UDP Source port: 7546 Destination port: 7546
2019-06-15 11:50:17.552215 192.168.254.1 -> 192.168.254.3 TCP 14139 > ssh [ACK] Seq=365 Ack=11277 Win=63546 Len=0
2019-06-15 11:50:17.661764 192.168.254.3 -> 192.168.254.4 UDP Source port: 3200 Destination port: 3200
2019-06-15 11:50:17.653242 192.168.254.4 -> 192.168.254.3 UDP Source port: 3200 Destination port: 3200
2019-06-15 11:50:17.872637 8c:60:4f:aa:c2:e1 -> 01:80:e7:00:00:0e LLDP Chassis : d = 8c:60:41:aa:c2:e1 Port Id = mgmt0 TTL = 120
2019-06-15 11:50:08.173056 192.168.256.3 -> 192.168.254.2 NTP NTP client
2019-06-15 11:50:08.173256 192.168.256.2 -> 192.168.254.3 NTP NTP server
```

A flapping link issue has been reported on the vPC keepalive link. A packet capture has been activated on the Cisco Nexus switch. What is the destination IP address of the vPC keepalive packets that are sent by the switch?

- A. 192.168.254.4
- B. 239.255.70.83
- C. 192.168.254.1
- D. 192.168.254.2

**Answer:** A

**Explanation:**

<https://www.cisco.com/c/en/us/td/docs/switches/datacenter/nexus3000/sw/interfaces/92x/b-cisco-nexus-3000-nx>

**NEW QUESTION 98**

An engineer must configure SAN connectivity in Cisco UCS manager. The requirement is to specify the WWPN of the storage array and set the zoning type to single initiator multiple targets. The engineer must also configure interrupt handling and queues of the vHBA interface. Which two Cisco UCS policies should be used to configure the settings? (Choose two.)

- A. storage connection policy
- B. SAN connectivity policy
- C. vHBA policy
- D. Fibre Channel adaptor policy
- E. boot policy

**Answer:** AD

**NEW QUESTION 101**

A cisco Nexus 9000 series switch experiences a startup configuration corruption. The engineer must implement a procedure to recover configuration file from the switch. Which command set must be used?

- A. \* 1. Copy the running-configuration to the startup configuration.\* 2. Clear the current configuration of the switch.\* 3. Restart the device.\* 4. Copy a previously saved configuration file to the running configuration.
- B. \* 1. Clear the current configuration of the switch\* 2. Restart the device.\* 3. Copy the running configuration to the startup configuration\* 4. Copy a previously saved configuration file to the running configuration
- C. \* 1. Clear the current configuration of the switch\* 2. Restart the device.\* 3. Copy a previously saved configuration file to the running-configuration\* 4. Copy the running-configuration to the startup configuration.
- D. \* 1.Restarting device.\* 2. Copy the running-configuration file to a remote server.\* 3. Clear the current configuration of the switch.\* 4. Copy the running configuration to the startup configuration

**Answer:** C

**Explanation:**

Problems, such as memory corruption, can occur that make it necessary for you to recover your configuration from a backed-up version.

Each time that you enter a copy running-config startup-config command, a binary file is created and the ASCII file is updated. A valid binary configuration file reduces the overall boot time significantly. A binary file cannot be uploaded, but its contents can be used to overwrite the existing startup configuration. The write erase command clears the binary file.

**SUMMARY STEPS**

- \* 1. write erase
- \* 2. reload
- \* 3. copy configuration-file running-configuration
- \* 4. copy running-config startup-config <https://www.cisco.com/c/en/us/td/docs/switches/datacenter/nexus9000/sw/93x/fundamentals/configuration/guide>

**NEW QUESTION 106**

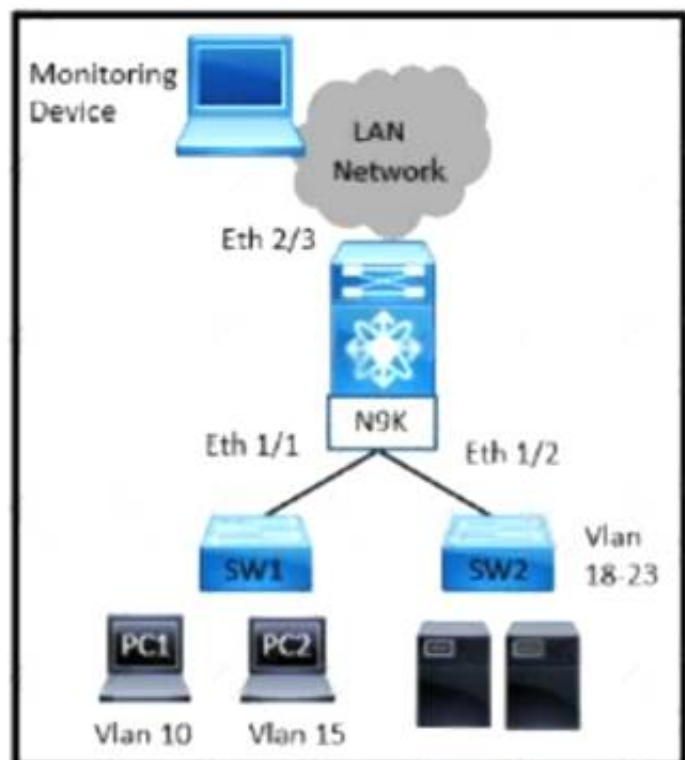
An engineer must perform a backup operation of the Cisco UCS system. The backup must be transferred to a secure location using UDP and must contain information about VLANs, VSANs, and other policies. Also, the operations team requires the backup file to be in a human-readable format. Which configuration set meets these requirements?

- A. Type: System configuration Protocol: SCP
- B. Type: Logical configuration Protocol: TFTP
- C. Type: All configuration Protocol: FTP
- D. Type: Full state Protocol: SFTP

**Answer:** B

**NEW QUESTION 111**

Refer to the exhibit





A network administrator experiences these issues with the network:

- PC1 is experiencing a buffering problem for video applications
- The servers that are connected to SW2 are experiencing packet drops when they connect to the Internet

The engineer wants to configure the required traffic capture to investigate the issue further. Which configuration must be implemented to monitor the traffic?

☐ N9K(config)# monitor session 5 rx  
N9K(config)# monitor session 5 tx  
N9K(config-monitor)# description Span\_session\_5  
N9K(config-monitor)# source interface ethernet 1/1  
N9K(config-monitor)# source interface ethernet 1/2  
N9K(config-monitor)# destination interface ethernet 2/3

☐ N9K(config)# monitor session 5 tx  
N9K(config-monitor)# description Span\_session\_5  
N9K(config-monitor)# source interface ethernet 1/1  
N9K(config-monitor)# source interface ethernet 1/2  
N9K(config-monitor)# destination interface ethernet 2/3

☐ N9K(config)# monitor session 5 tx  
N9K(config-monitor)# description Span\_session\_5  
N9K(config-monitor)# source vlan 10-15 rx  
N9K(config-monitor)# source interface ethernet 1/2  
N9K(config-monitor)# destination interface ethernet 2/3

☒ N9K(config)# monitor session 5 rx  
N9K(config-monitor)# description Span\_session\_5  
N9K(config-monitor)# source vlan 10 rx  
N9K(config-monitor)# source interface ethernet 1/2  
N9K(config-monitor)# destination interface ethernet 2/3

- A. Option A
- B. Option B
- C. Option C
- D. Option D

**Answer:** D

#### NEW QUESTION 112

A customer deploys a media server to distribute streaming videos to network clients. The requirement is to allow the video feed to reach only requesting clients. The shared trees must not propagate the video feed if no clients from that tree request it. To reduce configuration touchpoints, the solution must support the automatic discovery and announcement of RP-set information. Each router in the network is responsible for selecting the RP. Which configuration set meets these requirements?

A)

router(config-if)# ip pim bidir-enable  
router(config)# ip pim ssm default  
router(config)# ip igmp version 3

B)

router(config-if)# ip pim dense-mode  
router(config)# ip pim rp-address 1.1.1.1  
router(config)# ip pim rp listener

C)

router(config-if)# ip pim sparse mode  
router(config)# ip pim bsr-candidate Lo0  
router(config)# ip pim rp-candidate Lo0

D)

router(config-if)# ip pim sparse-sense mode  
router(config)# ip pim auto-rp  
router(config)# ip pim send-rp-announce

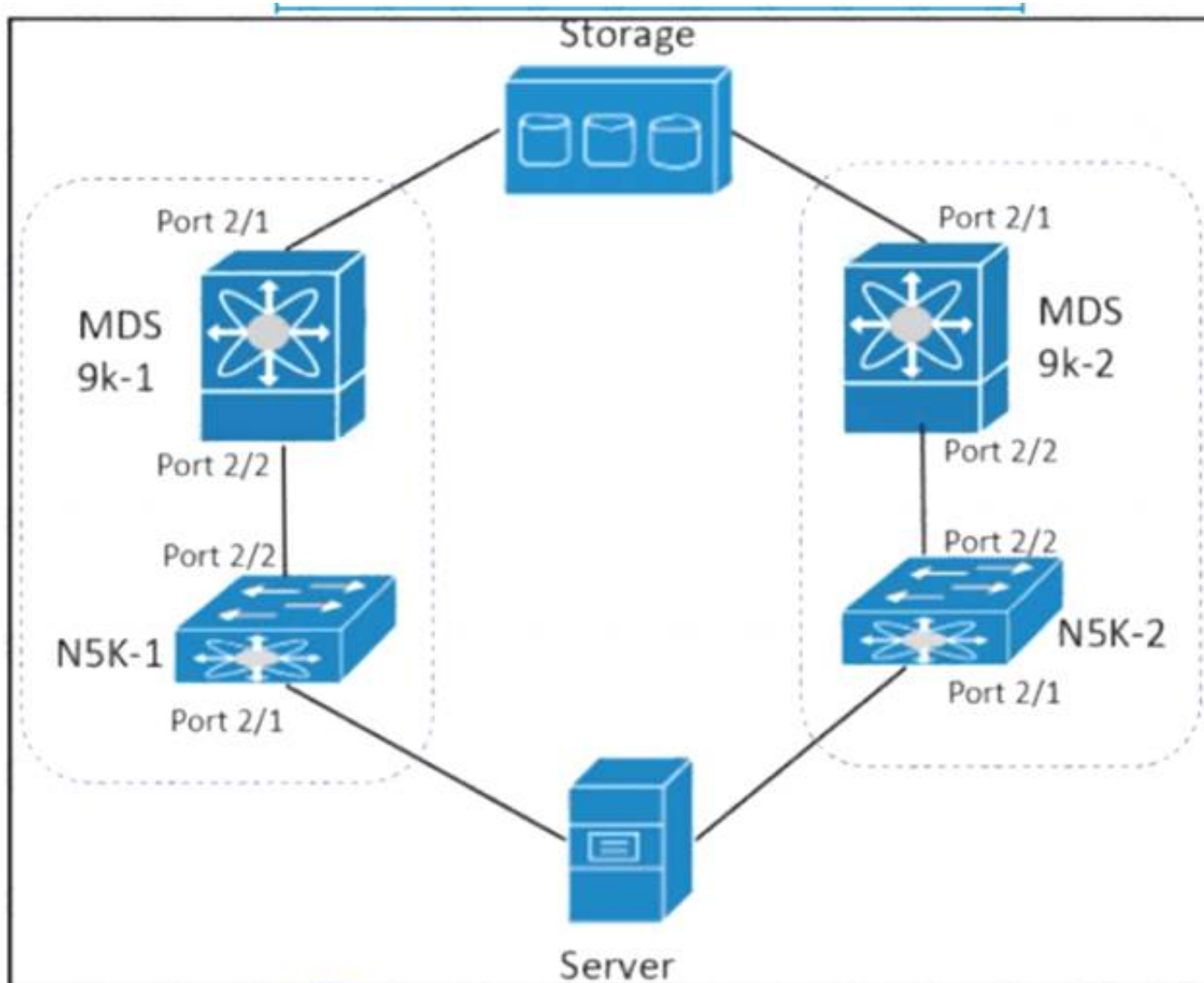
- A. Option A
- B. Option B
- C. Option C

D. Option D

**Answer:** D

**NEW QUESTION 115**

Refer to the exhibit.



The server is sending traffic to the storage server using Fiber Channel protocol. The requirement is for the N5K-1 to forward traffic to MDS9k-1. Drag and drop the configuration steps from the right to complete the configuration for N5K-1 on the left. Not all configuration steps are used.

```

N5K-1# configuration terminal
N5K-1#(config) # 
N5K-1#(config) # interface fc 2/2
N5K-1#(config-if) # 
N5K-1#(config-if) # no shutdown
N5K-1#(config) # 
N5K-1#(config-if) # 
N5K-1#(config-if) # no shutdown
        
```

interface fc 2/1

interface port 2/1

interface port 2/2

npv enable

switchport mode F

switchport mode NP

- A. Mastered
- B. Not Mastered

**Answer:** A

**Explanation:**

npv enable, switchport mode F, interface fc2/1, switchport mode NP

**NEW QUESTION 120**

An engineer must configure OSPF in the data center. The external routes have already been redistributed OSPF. The network must meet these criteria:

- \* The data centre servers must reach services in the cloud and the services behind the redistributed routes.
- \* The exit point toward the internet should be propagated only when there is a dynamically learned default route from the upstream router.

Which feature is required?

- A. Default-information originate
- B. Stubby area
- C. Totally stubby area
- D. Default-information originate always

**Answer:** A

**Explanation:**

<https://learningnetwork.cisco.com/s/question/0D53i00000Kt544/defaultinformationoriginate-always>

**NEW QUESTION 122**

Drag and drop the fields for configuring a full state backup file of the Cisco UCS Manager from the left onto the descriptions on the right.

hostname	location where the backup file id stored
protocol	full path to the backup configuration file
remote file	binary file that includes a snapshot of the entire system
type	settings used to transfer the file to the backup server

- A. Mastered
- B. Not Mastered

**Answer:** A

**Explanation:**

Diagram Description automatically generated

**NEW QUESTION 126**

Due to a major version change, an engineer must perform a software upgrade on a Cisco Nexus Series switch. Which two technologies can be implemented to reduce disruptions to the network during the upgrade? (Choose two.)

- A. MLAG
- B. HSRP
- C. PAgP
- D. VDC
- E. vPC

**Answer:** BE

**NEW QUESTION 129**

An engineer must configure Cisco Nexus 9000 Series Switches for Cisco UCS Director integration. The configuration must enable automated onboarding of the switches as they come online. For security purposes, the switches must have the bare minimum of connection methods enabled. The connection protocol must allow authentication through credentials. Which protocol must be configured on the switches to allow automated onboarding?

- A. SNMP
- B. Telnet
- C. SSH
- D. HTTPS

**Answer:** C

**NEW QUESTION 133**

An engineer is implementing Cisco Intersight in a secure environment. The environment must use LDAP directory service and ensure information integrity and confidentiality. Which two steps must be taken to implement the solution? (Choose two.)

- A. Enable Encryption for LDAP
- B. Add a self-signed LDAP certificate to Cisco Intersight.
- C. Enable Certificate Signing Request in Cisco Intersight.
- D. Add a trusted root LDAP certificate to Cisco Intersight
- E. Add a trusted OAuth token to Cisco Intersight

**Answer:** AD

**Explanation:**



Find Matches in This Book

**Step 3** On the **Configure LDAP** page, add the corresponding details in the fields that are listed below, and click **Save**.

- **Name**—Enter a name to easily identify the LDAP domain that you are configuring.
- **Base DN**—Enter a Base Distinguished Name (DN) for the server. For example, DC=Intersight, DC=com.
- **Bind DN**—Enter a DN used to authenticate against LDAP server and the password for the user.
- **Group Attribute**—Enter the Group member attribute to which an LDAP entry belongs. Cisco Intersight Virtual Appliance uses this Group attribute to map/assign Intersight roles to the user. The default value is **member** and you can change it from **Edit LDAP** settings.
- **Password**—Enter a DN password for the user.
- **Enable Encryption**—You must **enable Encryption to secure the communication over the LDAP server**. If encryption is enabled, a **trusted root certificate has to be added**. For more information, see *Adding Certificates*.
- **In Server**—Add an LDAP Server IP address or hostname. **Cisco Intersight Virtual Appliance supports only one LDAP provider and port.**

**Attention**

- LDAPS is supported on Port 636 and Port 3269. All other ports support LDAP on TLS.
- **Cisco Intersight Virtual Appliance uses the email ID or username to log in an LDAP user**. If you want to use email ID to log in to the appliance, configure the mail attribute in the LDAP server. If you want to use the username, use the sAMAccountName configured for that user in the LDAP server.
- **After you add the required details to configure LDAP settings, wait for the DeployApplianceLDAP workflow to complete before you add User or Group to assign appropriate roles to LDAP users.** You can

[https://www.cisco.com/c/en/us/td/docs/unified\\_computing/Intersight/b\\_Cisco\\_Intersight\\_Appliance\\_Getting\\_Started\\_Guide/b\\_Cisco\\_Intersight\\_Appliance\\_Install\\_and\\_Upgrade\\_Guide\\_chapter\\_0110.html](https://www.cisco.com/c/en/us/td/docs/unified_computing/Intersight/b_Cisco_Intersight_Appliance_Getting_Started_Guide/b_Cisco_Intersight_Appliance_Install_and_Upgrade_Guide_chapter_0110.html)

#### NEW QUESTION 138

A network administrator is using the Cisco ESA with Cisco AMP to upload files to the cloud for analysis. The network is congested and is affecting communication. How will the Cisco ESA handle any files which need analysis?

- A. Cisco AMP calculates the SHA-256 fingerprint, caches it, and periodically attempts the upload.
- B. The Cisco ESA immediately makes another attempt to upload the file.
- C. The file is queued for upload when connectivity is restored.
- D. The file upload is abandoned.

**Answer:** A

#### NEW QUESTION 142

An engineer must create a scheduler configuration to create two backup jobs per day. The backup file must be copied to a server in the operations VRF. Which configuration accomplishes this task?

A)

```
scheduler schedule name CNFGBACKUP
  job name BACKUP-JOB
  copy running-config tftp://10.19.11.12/$(SWITCHNAME)-$(TIMESTAMP).cfg vrf operations
  time start now repeat 12:00
```

B)

```
scheduler schedule name CNFGBACKUP
  job name BACKUP-JOB
  show tech-support | redirect vrf operations tftp://10.19.11.12/$(SWITCHNAME)-$(TIMESTAMP).cfg
  time start daily 12:30 0:30
```

C)

```
scheduler schedule name CNFGBACKUP
  job name BACKUP-JOB
  copy startup-config tftp://10.19.11.12/$(SWITCHNAME)-$(TIMESTAMP).cfg
  time daily 12:30 0:30
```

D)

```
scheduler schedule name CNFGBACKUP
  job name BACKUP-JOB
  copy vrf operations config tftp://10.19.11.12/$(SWITCHNAME)-$(TIMESTAMP).cfg
  time start 12:30 repeat 12
```

- A. Option A
- B. Option B
- C. Option C
- D. Option D



**Answer:** A

#### NEW QUESTION 143

The EPLD update of the supervisor module has been scheduled for several cisco MDS 9000 switches. What will be the impact of the update?

- A. All control plane traffic is stopped for the duration of the EPLD update and the switch remain operational for the duration of the upgrade.
- B. The redundant supervisor takes over while the EPLD update is in progress and there is no service disruption.
- C. All traffic is stopped for the duration of the EPLD update and the switch is rebooted after the upgrade is completed.
- D. The redundant supervisor takes over while the EPLD update is in progress and the switch is rebooted after the upgrade is completed.

**Answer:** C

#### Explanation:

An EPLD update of the supervisor module of fabric switches (Cisco MDS 9100, Cisco MDS 9200, and Cisco MDS 9300 Series switches) is disruptive since there is no redundant supervisor to take over while the update is in progress. All traffic through the system is stopped for the duration of the update and the switch is rebooted after the upgrade has completed. The update may take up to 30 minutes to complete.

[https://www.cisco.com/c/en/us/td/docs/switches/datacenter/mds9000/sw/6\\_2/release/notes/epld/epld\\_rn.html#pg](https://www.cisco.com/c/en/us/td/docs/switches/datacenter/mds9000/sw/6_2/release/notes/epld/epld_rn.html#pg)

#### NEW QUESTION 147

An engineer must configure a Nexus 7000 series switch for HSRP on VLAN 100. When fully functional, the router must be the active master. Which set of commands must be used to implement the scenario?

```
feature hsrp
interface vlan100
ip address 10.1.1.2 255.255.255.0
priority 120
hsrp version 2
hsrp 1000
ip 10.1.1.1
```

```
feature hsrp
interface vlan100
ip address 10.1.1.2 255.255.255.0
priority 100
hsrp version 2
hsrp 1000
ip 10.1.1.1
```

```
feature-set hsrp
interface vlan100
ip address 10.1.1.2 255.255.255.0
priority 110
hsrp version 2
hsrp 1000
ip 10.1.1.1
```

```
feature-set hsrp
interface vlan100
ip address 10.1.1.2 255.255.255.0
priority 80
hsrp version 2
hsrp 1000
ip 10.1.1.1
```

- A. Option A
- B. Option B
- C. Option C
- D. Option D

**Answer:** A

#### NEW QUESTION 150

An engineer needs to monitor ingress traffic that arrives at interface Ethernet 1/3 that belongs to a Cisco Nexus 5600 Series Switch. The traffic analyzer machine located at interface Ethernet 1/5 is already monitoring other production, and the traffic analyzer must not be impacted by the traffic captured from the interface Eth1/3. The operations team allocated a traffic budget for the new monitoring session of 1 Gbps to meet this requirement Which set of commands configures the SPAN session?

- ☐ interface Ethernet 1/3  
switchport monitor rate-limit 1G  
  
monitor session 2  
destination interface ethernet 1/5  
source interface Eth 1/3
- ☐ interface Ethernet 1/3 rx  
switchport mode SD  
switchport monitor rate-limit 1G  
monitor session2  
destination interface ethernet 1/5
- ☐ interface Ethernet 1/3  
monitor rate-limit 1G  
destination interface ethernet 1/5  
source interface rx  
  
interface Ethernet 1/5  
monitor session 2  
destination interface tx
- ☐ interface Ethernet 1/3  
monitor session 2  
destination interface ethernet 1/5  
source interface rx  
  
interface Ethernet 1/5  
monitor rate-limit 1G

- A. Option A
- B. Option B
- C. Option C
- D. Option D

Answer: A

Explanation:

Find Matches in This Book

	switch(config)# interface ethernet slot/port	Enters interface configuration mode for the specified Ethernet interface selected by the slot and port values.
Step 3	switch(config-if)# switchport monitor rate-limit 1G	Specifies that the rate limit is 1 Gbps.
Step 4	switch(config-if)# exit	Reverts to global configuration mode.

**Example**

This example shows how to limit the bandwidth on Ethernet interface 1/2 to 1 Gbps:

```
switch(config)# interface ethernet 1/2
switch(config-if)# switchport monitor rate-limit 1G
switch(config-if)#
```

### Configuring Source Ports

**Procedure**

	Command or Action	Purpose
Step 1	switch# configure terminal	Enters global configuration mode.
Step 2	switch(config) # monitor session session-number	Enters monitor configuration mode for the specified monitoring session.
Step 3	switch(config-monitor) # source interface type slot/port [rx   tx   both ]	Adds an Ethernet SPAN source port and specifies the traffic direction in which to duplicate packets. You can enter a range of Ethernet, Fibre Channel, or virtual Fibre Channel ports. You can specify the traffic direction to duplicate as ingress (Rx), egress (Tx), or both. By default, the direction is both.

[https://www.cisco.com/c/en/us/td/docs/switches/datacenter/nexus5600/sw/system\\_management/7x/b\\_5600\\_System\\_Mgmt\\_Config\\_7x/configuring\\_span.html](https://www.cisco.com/c/en/us/td/docs/switches/datacenter/nexus5600/sw/system_management/7x/b_5600_System_Mgmt_Config_7x/configuring_span.html)

#### NEW QUESTION 153

Which command reduces the amount of time it takes to complete the ISSU on a Cisco Nexus 7000 series switch that has dual supervisor modules and two I/O modules?

- A. install all kickstart <image>system<image>parallel
- B. install all epld bootflash:<image>
- C. install all epld bootflash:<image>
- D. install all kickstart<image>system<image>

Answer: A

Explanation:

Graphical user interface, text, application Description automatically generated

Parallel Upgrade

Parallel Upgrade with I/O Modules

Starting with Cisco NX-OS Release 5.2(1), multiple linecards can be simultaneously upgraded, and the infrastructure support is available. This decreases the ISSU time when compared with an ISSU upgrade that is done serially (one card at a time).

To start a parallel upgrade, use the following command: `install all kickstart image system image parallel`

Up to three linecards can be upgraded in parallel with this command. During the upgrade process, the upgrade of the linecards is displayed in the output as follows:

```
Non-disruptive upgrading.
[#          ] 0%
Module 5 upgrade completed successfully.

Module 3 upgrade completed successfully.
```

[https://www.cisco.com/c/en/us/td/docs/switches/datacenter/nexus7000/sw/upgrade/guide/cisco\\_nexus7000\\_software\\_upgrade\\_and\\_downgrade\\_guide\\_8x.html](https://www.cisco.com/c/en/us/td/docs/switches/datacenter/nexus7000/sw/upgrade/guide/cisco_nexus7000_software_upgrade_and_downgrade_guide_8x.html)  
[https://www.cisco.com/c/en/us/td/docs/switches/datacenter/sw/7\\_x/nx-os/upgrade/guide/b\\_Cisco\\_Nexus\\_7000\\_Series\\_NX-OS\\_Software\\_Upgrade\\_and\\_Downgrade\\_Guide\\_Release\\_7-x.html#d54e307a1635](https://www.cisco.com/c/en/us/td/docs/switches/datacenter/sw/7_x/nx-os/upgrade/guide/b_Cisco_Nexus_7000_Series_NX-OS_Software_Upgrade_and_Downgrade_Guide_Release_7-x.html#d54e307a1635)

NEW QUESTION 154

What is required for using Ansible with HTTP/HTTPS protocol in a Cisco NX-OS environment?

- A. SSH
- B. Open Agent Container
- C. XML management interface
- D. NX-API

Answer: D

Explanation:

[https://docs.ansible.com/ansible/2.5/modules/nxos\\_nxapi\\_module.html](https://docs.ansible.com/ansible/2.5/modules/nxos_nxapi_module.html) [https://docs.ansible.com/ansible/latest/network/user\\_guide/platform\\_nxos.html](https://docs.ansible.com/ansible/latest/network/user_guide/platform_nxos.html)

NEW QUESTION 155

Drag and drop the mechanisms to collect data from a network from the left onto their characteristics on the right

CLI-based scripts	Polling can take 5-10 minutes.
SNMP	Unstructured and susceptible to change and scripts failure.
syslog	It sends data from the device to a specific endpoint, for instance, JSON or by using Google protocol buffers.
telemetry	It pushes messages in the format "seq no:timestamp: %facility-severity MNEMONIC:description" and has limits in scale and efficiency.

- A. Mastered
- B. Not Mastered

Answer: A

Explanation:

Table Description automatically generated with low confidence

NEW QUESTION 159

The Cisco Nexus 5600 Series Switch experiences occasional packet drops on interface ethernet 1/16. An engineer wants to implement a SPAN session to investigate the issue further. The network analyzer to which the packets must be directed is located on interface 1/3. The analyzer is limited on disk space available for traffic capture, so the Nexus switch should send only the relevant data. Which two command sets configure the SPAN session that meets these requirements? (Choose two.)

- ☒ interface ethernet 1/3  
switchport monitor
- ☐ monitor session 2  
destination interface ethernet 1/3  
span interface ethernet 1/16
- ☐ interface ethernet 1/3  
switchport span
- ☒ span session 2  
type SPAN-on-DROP  
destination interface ethernet 1/3  
source interface ethernet 1/16
- ☒ monitor session 2 type SPAN-on-DROP  
destination interface ethernet 1/3  
source interface ethernet 1/16

- A. Option A  
B. Option B  
C. Option C  
D. Option D  
E. Option E

**Answer:** AE

**Explanation:**

<https://www.cisco.com/c/en/us/products/collateral/switches/nexus-5000-series-switches/white-paper-c11-73302> The information to be sent is regarding dropped packets only.

This configuration creates a SPAN session with type SPAN-on-DROP. In the following example, the source interface, where congestion may be present, is port e3/1. The destination port is e3/2, which must be in switchport monitor mode.

```
switch(config)# monitor session <session_number> type SPAN-on-DROP
switch(config-SPAN-on-DROP)# source interface e3/1
switch(config-SPAN-on-DROP)# destination interface e3/2
```

**NEW QUESTION 162**

An engineer must implement a Cisco UCS system at a customer site. One of the requirements is to implement SAN boot. The storage system maps the source WWPN to a unique LUN. Which method does Cisco recommend to configure the SAN boot?

- A. Create a SAN boot policy in which every initiator is mapped to the same target LUN.  
B. Define the vHBAs as bootable and leave the default values on the target definition.  
C. Define the vHBAs as bootable and leave the boot target definition empty.  
D. Create a SAN boot policy in which every initiator is mapped to a different target LUN.

**Answer:** A

**Explanation:**

While you have multiple zones consisting of FC vHBAs and storage target wwpns for SAN Fabrics A and B, you are ultimately booting off of the same boot LUN. Multiple paths to get to the same boot device which correspond with the same LUN ID.

[https://www.cisco.com/c/en/us/td/docs/unified\\_computing/ucs/ts/guide/UCSTroubleshooting/UCSTroubleshooting\\_chapter\\_0110.html#r\\_sanarrayconfigurationchecklist](https://www.cisco.com/c/en/us/td/docs/unified_computing/ucs/ts/guide/UCSTroubleshooting/UCSTroubleshooting_chapter_0110.html#r_sanarrayconfigurationchecklist)

**NEW QUESTION 164**

A company is running a pair of cisco Nexus 7706 series switches as part of a data center segment. All network engineers have restricted read-Write access to the core switches. A network engineer must a new FCoE VLAN to allow traffic from services toward FCoE storage. Which set of actions must be taken to meet these requirements?

- A. \* 1. Create a user defined role and add the required privileges.\* 2. Assign a role to a user.  
B. \* 1. Add the required privilege to the VDC-admin role.  
C. Commit the changes to the active user database.  
D. \* 1. Modify a network-operator role and add the required privileges.\* 2. Assign a VDC-operator role to a user.  
E. \* 1. Assign the network-admin role to a user.\* 2. Commit the role to the switch to the active user database

**Answer:** B

**NEW QUESTION 165**

A network engineer must create an EEM script that saves a copy of the running configuration on bootflash and writes a message to syslog when a user saves the configuration to a Cisco Nexus switch. Which configuration set should be applied to complete this task?



- ☐ event manager applet local- backup  
event cli match "copy running-config startup-config"  
action 1 cli copy running-config bootflash:/current\_config.txt  
action 2 syslog msg Configuration saved and copied to bootflash
- ☐ event manager applet local- backup  
☒ event cli match "write memory"  
action 1 cli copy running-config bootflash:/current\_config.txt  
action 2 snmp-trap strdata "Configuration saved and copied to bootflash"
- ☐ event manager applet local- backup  
event cli match "copy running-config startup-config"  
action 1 cli copy running-config bootflash:/current\_config.txt  
action 2 syslog msg Configuration saved and copied to bootflash  
action 3 event-default
- ☒ event manager applet local- backup  
event cli match "write memory"  
action 1 cli copy running-config bootflash:/current\_config.txt  
action 2 syslog msg Configuration saved and copied to bootflash  
action 3 event-default

- A. Option A  
B. Option B  
C. Option C  
D. Option D

**Answer:** C

**Explanation:**

The command write memory is not valid in NX-OS  
The "event-default"

If you want to allow the triggered event to process any default actions, you must configure the EEM policy to allow the default action. For example, if you match a CLI command in a match statement, you must add the event-default action statement to the EEM policy or EEM will not allow the CLI command to execute.

**NEW QUESTION 167**

Cisco Nexus 9000 Series Switches are configured with LACP protocol and default aging timers. What is the impact on the LACP peer during an ISSU upgrade?

- A. The LACP peer connection terminates.  
B. The LACP peer session remains up.  
C. The LACP peer renegotiates the adjacency.  
D. The LACP peer connection resets.

**Answer:** B

**Explanation:**

[https://www.cisco.com/c/en/us/td/docs/switches/datacenter/nexus9000/sw/6-x/interfaces/configuration/guide/b\\_](https://www.cisco.com/c/en/us/td/docs/switches/datacenter/nexus9000/sw/6-x/interfaces/configuration/guide/b_ISSU_and_ungraceful_switchovers_are_not_supported_with_LACP_fast_timers.html) ISSU and ungraceful switchovers are not supported with LACP fast timers.

**NEW QUESTION 171**

The Cisco UCS blade chassis must send SNMPv3 traps to a network monitoring system. The SNMP trap messages should be authenticated and have protection from closure. Which SNMP security privileged level should be configured?

- A. noPriv  
B. auth  
C. noAuth  
D. priv

**Answer:** D

**NEW QUESTION 173**

A customer reports Fibre Channel login requests to a cisco MDS 9000 series Switch from an unauthorized source. The customer requires a feature that will allow all devices already logged in and learned in and learned to be added to the Fibre channel active database. Which two features must be enabled to accomplish this goal?

(Choose two.)

- A. Auto-learning  
B. Port security  
C. Enhanced zoning  
D. Device aliases  
E. Smart aliases

**Answer:** AB

Explanation:

[https://www.cisco.com/en/US/docs/storage/san\\_switches/mds9000/sw/rel\\_3\\_x/configuration/guides/fm\\_3\\_3\\_1/p](https://www.cisco.com/en/US/docs/storage/san_switches/mds9000/sw/rel_3_x/configuration/guides/fm_3_3_1/p) Port Security Activation By default, the port security feature is not activated in any switch in the Cisco MDS 9000 Family. By activating the port security feature, the following apply: Auto-learning is also automatically enabled, which means: From this point, auto-learning happens for the devices or interfaces that were already logged into the switch and also for the new devices will login in future. You cannot activate the database until you disable auto-learning. All the devices that are already logged in are learned and are added to the active database. All entries in the configured database are copied to the active database. After the database is activated, subsequent device login is subject to the activated port bound WWN pairs, excluding the auto-learned entries. You must disable auto-learning before the auto-learned entries become activated.

NEW QUESTION 175

Drag and drop the Hyperflex characteristics from the left onto the appropriate Hyper Hex node types on the right.

uses only SSD drives for caching

contains HDDs for the capacity layer

uses SSD drives or NVMe storage for caching

has SSD drives for the capacity layer

recommended for repeatable and sustainable high performance, especially for scenarios with a larger working set of data

recommended for capacity-sensitive solutions, lower budgets, and fewer performance-sensitive applications

Hybrid Node

All Flash Node

- A. Mastered
- B. Not Mastered

Answer: A

Explanation:

uses only SSD drives for caching

contains HDDs for the capacity layer

uses SSD drives or NVMe storage for caching

has SSD drives for the capacity layer

recommended for repeatable and sustainable high performance, especially for scenarios with a larger working set of data

recommended for capacity-sensitive solutions, lower budgets, and fewer performance-sensitive applications

Hybrid Node

uses only SSD drives for caching

contains HDDs for the capacity layer

recommended for capacity-sensitive solutions, lower budgets, and fewer performance-sensitive applications

All Flash Node

uses SSD drives or NVMe storage for caching

has SSD drives for the capacity layer

recommended for repeatable and sustainable high performance, especially for scenarios with a larger working set of data

NEW QUESTION 176

Which protocol does Cisco Hyperflex use to share data among nodes in a VMware vSphere environment?

- A. CIFS
- B. FCoE

- C. SMB
- D. NFS

**Answer:** D

#### NEW QUESTION 180

A network architect must design an automation solution to initially support networking and also support the server infrastructure in the future. To keep configuration consistency, the network team requires a solution that enforces the desired state of the network and reverts any manual configuration. Which solution meets these goals?

- A. NX-API
- B. Ansible
- C. Terraform
- D. Puppet

**Answer:** D

#### NEW QUESTION 182

An engineer requires the Cisco Fabric Services to distribute NTP configuration only to the members within the scope of a VSAN that belongs to a Cisco Unified Network. Which scope distribution must be selected to meet this requirement?

- A. Logical scope
- B. Physical scope
- C. Uncoordinated scope
- D. Coordinated scope

**Answer:** A

#### NEW QUESTION 184

Refer to the exhibit.

```
restart pim
```

Which result of running the command is true?

- A. The PIM database is deleted.
- B. Multicast traffic forwarding is suspended.
- C. PIM join messages are suspended.
- D. MRIB is flushed

**Answer:** A

#### Explanation:

When you restart PIM, the following tasks are performed: The PIM database is deleted. The MRIB and MFIB are unaffected and forwarding of traffic continues. The multicast route ownership is verified through the MRIB. Periodic PIM join and prune messages from neighbors are used to repopulate the database.  
[https://www.cisco.com/c/en/us/td/docs/switches/datacenter/nexus9000/sw/6-x/multicast/configuration/guide/b\\_C](https://www.cisco.com/c/en/us/td/docs/switches/datacenter/nexus9000/sw/6-x/multicast/configuration/guide/b_C)

#### NEW QUESTION 187

An engineer configures a role for a new user in Cisco UCS Manager. The role should allow the user to configure vHBAs, vNICs, and server port types. Which role should be assigned to allow the engineer to complete this task?

- A. network administrator
- B. operations
- C. server-compute
- D. AAA administrator

**Answer:** A

#### NEW QUESTION 190

Refer to the exhibit.



**Python Code:**

```
import requests
import json

url='http://lab-93180bdlf-sw1/ins'
switchuser='dazfre'
switchpassword='Clscorox0'

myheaders={'content-type' : 'application/json'}
payload={
    "ins_api": {
        "version": "1.0",
        "type": "cli_show",
        "chunk": "0",
        "sid": "1",
        "input": "configure terminal : feature hsrp",
        "output_format": "json"
    }
}
response = requests.post(url,data=json.dumps(payload),
headers=myheaders,auth=(switchuser,switchpassword))

print(response.text)

ERROR MESSAGE
{
    "ins_api" : [
        {
            "type": "cli_show",
            "version": "1.0",
            "sid": "eoc",
            "outputs": [
                {
                    "output": [
                        {
                            "clierror": "% invalid command\n",
                            "input": "configure terminal",
                            "msg": "input CLI command error",
                            "code": "400"
                        },
                        {
                            "clierror": "% invalid command\n",
                            "input": "feature hsrp",
                            "msg": "input CLI command error",
                            "code": "400"
                        }
                    ]
                }
            ]
        }
    ]
}
```

Why does the python code for Cisco NX-API print an error message?

- A. The "type" is wrong in the header of the request and should be "cli\_conf".
- B. NX-API does not allow configuration for features via the requests module.
- C. The "type" is wrong in the body of the request and should be "cli\_conf".
- D. The JSON is not a supported format for the NX-API.

**Answer: C**

**Explanation:**

"Commands that belong to different message types should not be mixed. For example, show commands are cli\_show message type and are not supported in cli\_conf mode." [https://www.cisco.com/c/en/us/td/docs/switches/datacenter/nexus7000/sw/programmability/guide/cisco\\_nexus7000\\_programmability\\_guide\\_8x/b-cisco-nexus7000-programmability-guide-8x\\_chapter\\_011.html](https://www.cisco.com/c/en/us/td/docs/switches/datacenter/nexus7000/sw/programmability/guide/cisco_nexus7000_programmability_guide_8x/b-cisco-nexus7000-programmability-guide-8x_chapter_011.html)

the payload "type" value is wrong in the body of the request. For the request to be successful, it should be changes to "cli\_conf".

For example, if we run the same request with the updated payload:

```
{
  "ins_api": { "version": "1.0",
    "type": "cli_conf",
    "chunk": "0",
    "sid": "1",
    "input": "configure terminal ;feature hsrp", "output_format": "json"
  }
}
```

We get a 200 response:

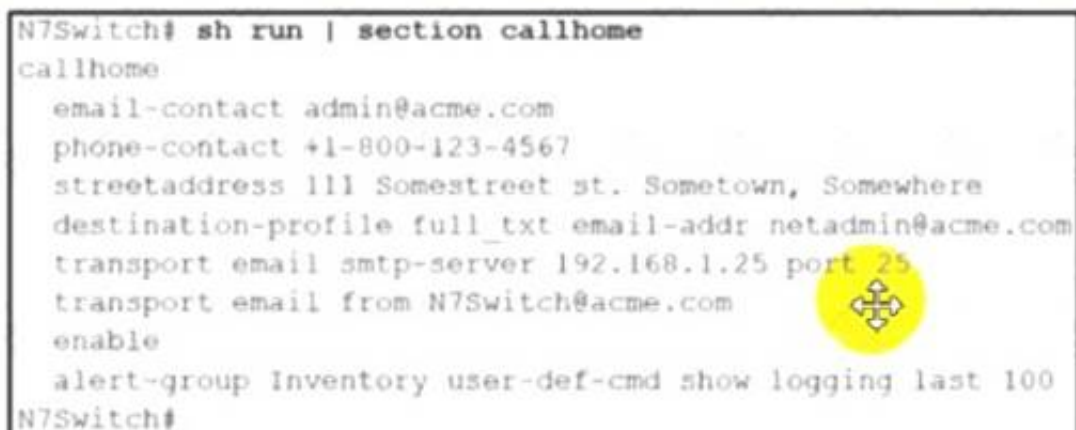
```
{
  "ins_api": { "sid": "eoc",
    "type": "cli_conf",
    "version": "1.0", "outputs": {
      "output": [
        {
          "code": "200",
          "msg": "Success",
          "body": {}
        }
      ]
    }
  },
  {
    "code": "200",
```

```
"msg": "Success",  
"body": {}  
}  
]  
}  
}  
}
```

CLI verification: nxos9kv# sh run | inc hsrp feature hsrp

**NEW QUESTION 191**

Refer to the exhibit.



```
N7Switch# sh run | section callhome  
callhome  
  email-contact admin@acme.com  
  phone-contact +1-800-123-4567  
  streetaddress 111 Somestreet st. Sometown, Somewhere  
  destination-profile full_txt email-addr netadmin@acme.com  
  transport email smtp-server 192.168.1.25 port 25  
  transport email from N7Switch@acme.com  
  enable  
  alert-group Inventory user-def-cmd show logging last 100  
N7Switch#
```

A network engineer is configuring the Smart Call Home feature on a Cisco Nexus Series Switch. An email must be generated that contains the last 100 lines of the log every time a new piece of hardware is inserted into the chassis. Which command must be added to the configuration to receive the email?

- A. alert-group Linecard-Hardware user-def-cmd show logging last 100
- B. destination-profile Operations alert-group Inventory
- C. destination-profile Operations message-level 2
- D. alert-group Operations user-def-cmd show logging last 100

**Answer: A**

**NEW QUESTION 194**

An engineer is implementing the Cisco ACI fabric and must create two different vPCs from leaf switches A and B. The vPCs are deployed as follows:

- vPC 1 encompasses ports Eth 1 /1 on leaf A and B and connects to server 1.
- vPC 2 encompasses port Eth1/2 on leaf A and B and connects to server 2.

A leaf switch profile listing leaves A and B is already configured Which ACI object must be created to meet these requirements?

- A. two vPC interface policy groups
- B. one access port interface policy group
- C. two PortChannel interface policy groups
- D. one vPC interface policy group

**Answer: A**

**NEW QUESTION 196**

An engineer must perform a nondisruptive software upgrade on a dual supervisor Cisco Nexus 7000 series switch. What is the cause of the upgrade being disruptive?

- A. The show install all impact command is not issued before the upgrade
- B. The kickstart image is installed by using the Install all kickstart image system image command
- C. Attempt to simultaneously upgrade more than three cards
- D. Change to the configuration settings or the network connections during the upgrade process

**Answer: D**

**NEW QUESTION 199**

An engineer must implement the FCoE on the Cisco Nexus 9000 Series Switch-based infrastructure. The deployment will contain dual-homed fabric extenders and must support jumbo frames with port channels. Which two sets of actions complete the configuration? (Choose two.)

- ☒ Configure the interface with mtu 9516.  
Disable the feature NPIV.
- ☒ Create a virtual Fibre Channel interface.  
Bind vFC to physical interface.
- ☐ Create a FCoE switch profile.  
Enable config sync.
- ☐ Create a dedicated VSAN for FEX.  
Bind VSAN to FEX uplinks.
- ☐ Execute fcoe enable-fex.  
Configure FEX uplinks with mtu 9216.

- A. Option A
- B. Option B
- C. Option C
- D. Option D
- E. Option E

Answer: BE

NEW QUESTION 204

Refer to the exhibit.

```
UCS-A# scope adapter 1/1/1
UCS-A# /chassis/server/adapter # show image
Name                               Type      Version    State
-----
ucs-m81kr-vic.2.2.1b.bin  Adapter  2.2(1b)    Active

UCS-A# /chassis/server/adapter # update firmware 2.2(1b)
UCS-A# /chassis/server/adapter* # activate firmware 2.2(1b)
set-startup-only
UCS-A# /chassis/server/adapter* # commit-buffer
UCS-A# /chassis/server/adapter #
```

What is the result of this series of commands?

- A. It reboots the server immediately.
- B. It verifies the firmware update on the server.
- C. It activates the firmware on the next adapter boot.
- D. It updates the firmware on adapter 1/1/1 immediately.

Answer: C

Explanation:

[https://www.cisco.com/c/en/us/td/docs/unified\\_computing/ucs/ucs-manager/CLI-User-Guides/Firmware-Mgmt/](https://www.cisco.com/c/en/us/td/docs/unified_computing/ucs/ucs-manager/CLI-User-Guides/Firmware-Mgmt/) Graphical user interface, text, application, email  
Description automatically generated

Step 6	UCS-A /chassis/server/adapter # activate firmware version-num [set- startup-only ]	Activates the selected firmware version on the adapter.  Use the <b>set-startup-only</b> keyword if you want to move the activated firmware into the <b>pending-next-boot</b> state and not immediately reboot the server. The activated firmware does not become the running version of firmware on the adapter until the server is rebooted. You cannot use the <b>set-startup-only</b> keyword for an adapter in the host firmware package.
--------	--	--

NEW QUESTION 205

An engineer must configure the HSRP protocol to implement redundancy using two Cisco Nexus Series Switches In addition, the HSRP must meet these requirements

- Switch1 must retain the primary role if switch2 goes offline
  - Switch1 must retain the primary role until normal conditions are restored.
  - Switch1 and switch2 must ensure that the routing tables are converged before taking the active role
  - switch2 must retain the primary role if the default gateway is not reachable
- Drag and drop the configuration commands from the right to the left to meet the requirements. The commands are used more than once Not all commands are used



```
! switch1
track 100 ip route 0.0.0.0/0 reachability

interface ethernet 1/1
ip 209.165.200.226/27

hsrp 200
ip 209.165.200.225
priority 210
[ ]
[ ]

no shutdown

! switch2
track 100 ip route 0.0.0.0/0 reachability

interface ethernet 1/1
ip 209.165.200.227/27

hsrp 200
ip 209.165.200.225
[ ]
[ ]

no shutdown
```

preempt delay minimum 30

track 100 decrement 200

track 200 decrement200

preempt sync 30

- A. Mastered  
B. Not Mastered

**Answer: A**

**Explanation:**

```
! switch1
track 100 ip route 0.0.0.0/0 reachability

interface ethernet 1/1
ip 209.165.200.226/27

hsrp 200
ip 209.165.200.225
priority 210
track 100 decrement 200
preempt delay minimum 30
no shutdown

! switch2
track 100 ip route 0.0.0.0/0 reachability

interface ethernet 1/1
ip 209.165.200.227/27

hsrp 200
ip 209.165.200.225
track 100 decrement 200
preempt delay minimum 30
no shutdown
```

preempt delay minimum 30

track 100 decrement 200

track 200 decrement200

preempt sync 30

#### NEW QUESTION 210

A Cisco ACI engineer must configure an access port on a Cisco ACI leaf switch. The access policy should be configured so that it supports L3out connectivity concurrently with several EPGs that are mapped to this interface with the static port method. How should the access policy be configured?

- A. by linking the interface policy group to multiple Attachable Access Entity Profiles  
B. with a single Attachable Access Entity Profile that is linked to the corresponding routed domain and physical domain  
C. with two interface policy groups that are linked to the same interface profile port selector  
D. by mapping a single physical domain, mapped to the L3out and EPG interfaces

**Answer: D**

#### NEW QUESTION 213

What are two types of FC/FCoE oversubscription ratios? (Choose two.)

- A. server storage to end-node count  
B. port bandwidth to uplink bandwidth  
C. edge ISL bandwidth to core ISL bandwidth  
D. host bandwidth to storage bandwidth  
E. switch processing power to end-node processing power

**Answer: CD**

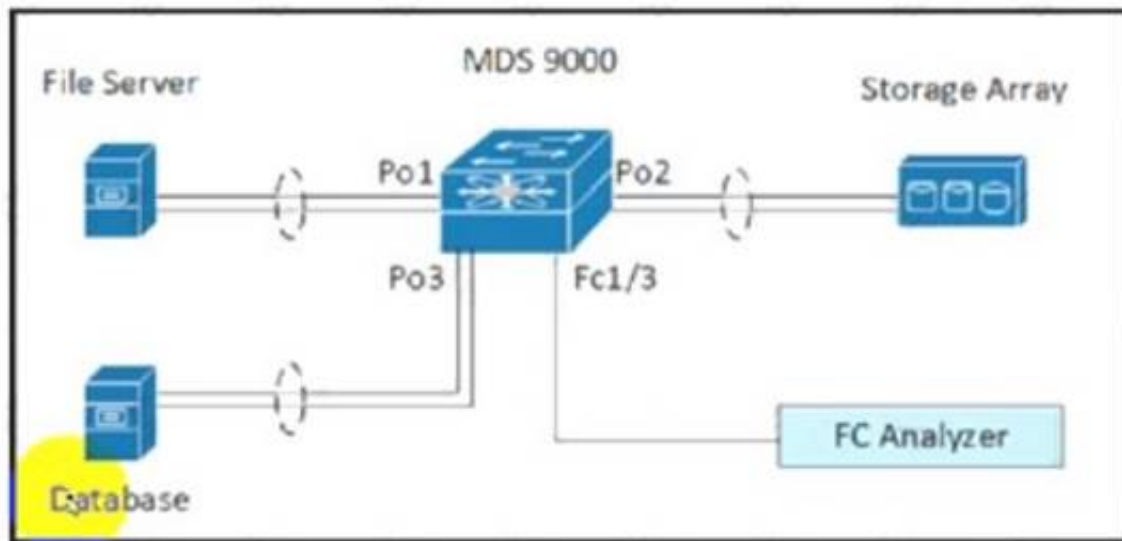
**Explanation:**

<https://www.ciscolive.com/c/dam/r/ciscolive/us/docs/2017/pdf/BRKDCN-1121.pdf>

[https://www.cisco.com/c/en/us/td/docs/switches/datacenter/nexus5000/sw/operations/n5k\\_fcoe\\_ops.html](https://www.cisco.com/c/en/us/td/docs/switches/datacenter/nexus5000/sw/operations/n5k_fcoe_ops.html)

**NEW QUESTION 214**

Refer to the exhibit.



```

interface port-channel 1
  channel mode active
interface port-channel 2
  channel mode active
interface fcl/1-2
  channel-group 1
  no shutdown
interface fcl/4-5
  channel-group 2
  no shutdown
interface fcl/7-8
  channel-group 3
  no shutdown
vsan database
  vsan 100 name fabric1
  vsan 100 interface port-channel 1
  vsan 100 interface port-channel 2
  vsan 100 interface port-channel 3
  
```

A storage engineer must monitor the traffic from the file server to the FC analyzer. The file server and the database use the same storage array. Which configuration must be applied to the Cisco MDS 9000 Series Switch to accomplish this goal?

- ☐ MDS-9000(config)# span session 1  
MDS-9000(config-span)# destination interface fc1/3  
MDS-9000(config-span)# source interface port-channel 1
- ☐ MDS-9000(config)# span session 1  
MDS-9000(config-span)# destination interface port-channel 2  
MDS-9000(config-span)# source interface vsan 100
- ☐ MDS-9000(config)# span session 1  
MDS-9000(config-span)# destination interface port-channel 2  
MDS-9000(config-span)# source interface fc1/1
- ☐ MDS-9000(config)# span session 1  
MDS-9000(config-span)# destination interface vsan 100  
MDS-9000(config-span)# source interface port-channel 1

- A. Option A
- B. Option B
- C. Option C
- D. Option D

**Answer: B**

**NEW QUESTION 218**

The VMM domain is integrated between Cisco APICs and vCenter using a distributed vSwitch. The traffic must be blocked between a subset of endpoints in an EPG based on specific VM attributes and the rest of the VMs in that EPG. Which set of actions blocks this traffic?

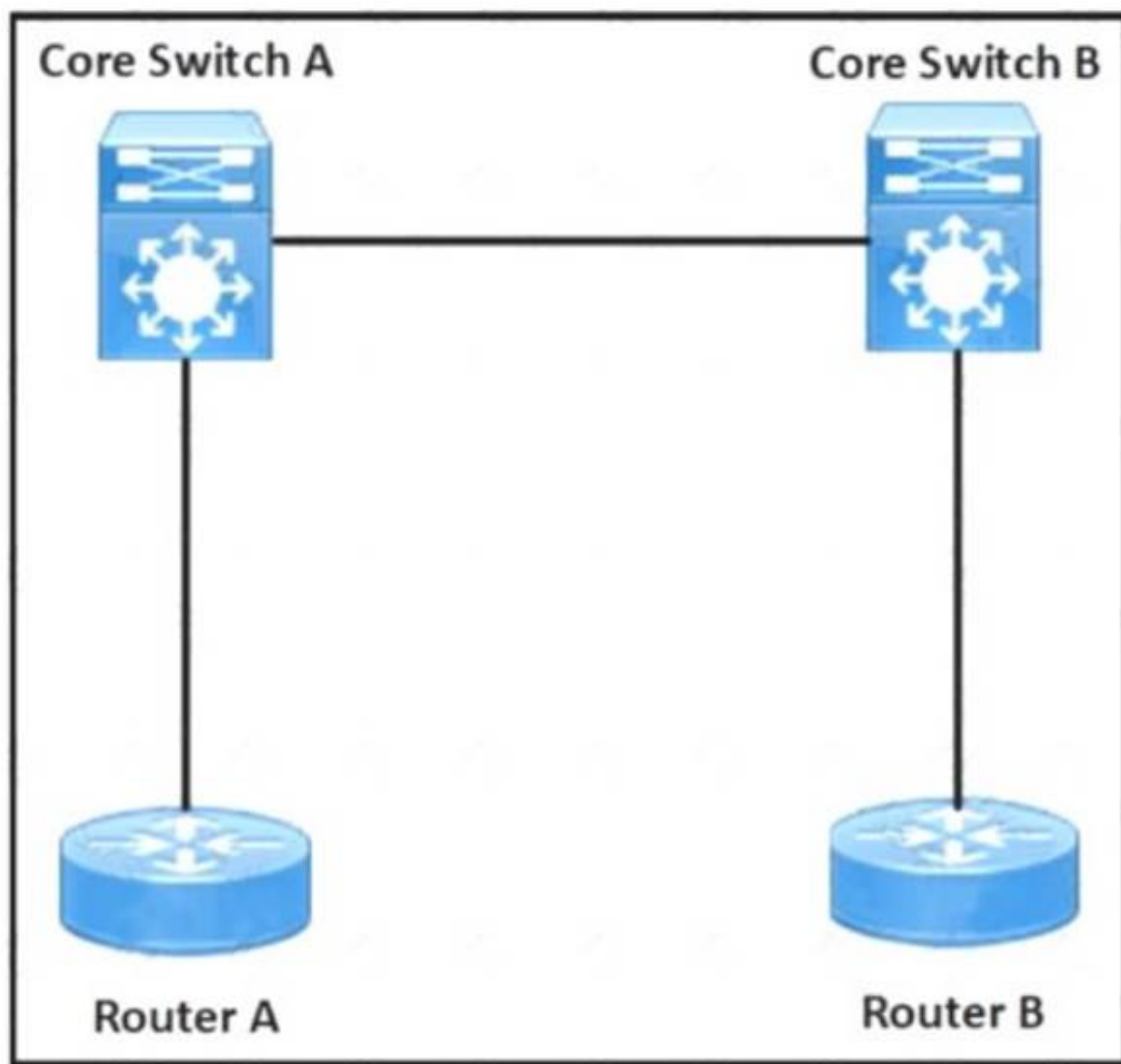
- ☐
  1. Set Allow Microsegmentation under the EPG VMM Domain Association to "True"
  2. Set Intra-EPG Isolation to "Enforced" for the EPG
  3. Set Intra-EPG Isolation to "Enforced" for the uSeg EPG
- ☐
  1. Set Allow Microsegmentation under the EPG VMM Domain Association to "True"
  2. Set Intra-EPG Isolation to "Unenforced" for the EPG
  3. Set Intra-EPG Isolation to "Unenforced" for the uSeg EPG
- ☐
  1. Set Allow Microsegmentation under the EPG VMM Domain Association to "False"
  2. Set Intra-EPG Isolation to "Unenforced" for the EPG
  3. Set Intra-EPG Isolation to "Enforced" for the uSeg EPG
- ☐
  1. Set Allow Microsegmentation under the EPG VMM Domain Association to "True"
  2. Set Intra-EPG Isolation to "Enforced" for the EPG
  3. Set Intra-EPG Isolation to "Unenforced" for the uSeg EPG

- A. Option A
- B. Option B
- C. Option C
- D. Option D

**Answer:** A

**NEW QUESTION 223**

Refer to the exhibit.



```
feature vn-segment-vlan-based
feature nv overlay

vlan 10
  vn-segment 10010

Interface Loopback0
  ip address 10.10.0.1/32
  ip pim sparse mode
```

A network engineer configures the VXLAN between the routers in a data center. The VLAN 10 must be extended between routers A and B. The initial VXLAN configuration is completed on Router A. Which configuration finishes the VXLAN configuration on Router A?

- A.
 

```
vrf context tenant1
vni 10010

Interface nve1
source-interface lo0
no shutdown
member vni 10010 interface 10.10.0.1
```
- B.
 

```
system bridge-domain 10
member vni 10010
interface nve1
no shutdown
source-interface lo0
```
- C.



```
Interface nve1
no shutdown
source-interface lo0
vni 10100 I2
rd auto
```

D.

```
Interface nve1
no shutdown
source-interface lo0
member vni 10010 mcast-group 231.1.1.1
```

**Answer:** C

#### NEW QUESTION 228

What are two capabilities of the Cisco Network Assurance Engine? (Choose two.)

- A. It verifies the speed of network packet flows by using telemetry.
- B. It predicts the network load on a data center.
- C. It validates that devices comply with network security policies.
- D. It ensures that network performance meets an SLA.
- E. It predicts the impact of changes to the network.

**Answer:** CE

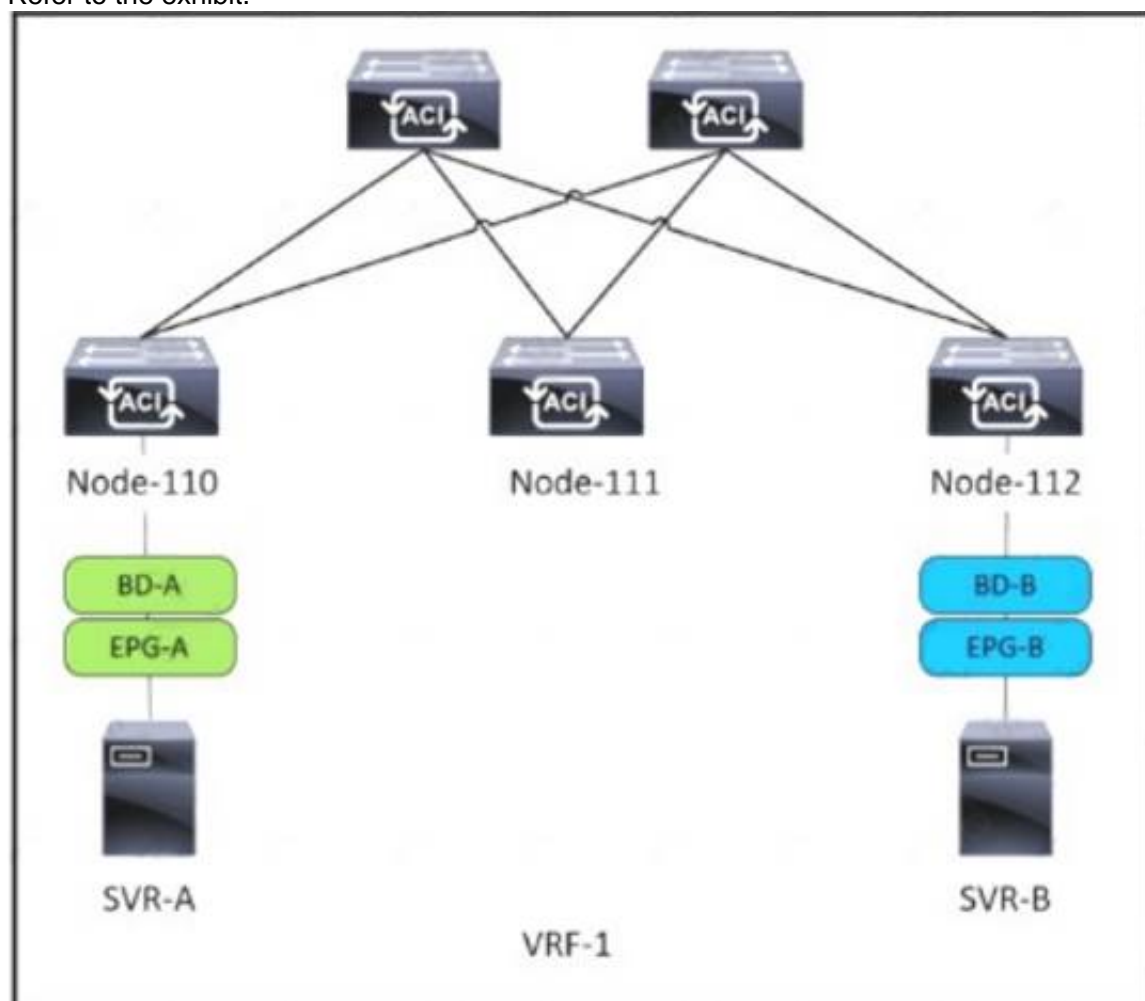
#### Explanation:

- Predict the impact of network changes
- Verify network-wide behavior
- Ensure network security policy and compliance

<https://www.cisco.com/c/en/us/products/collateral/data-center-analytics/network-assurance-engine/at-a-glance-c>

#### NEW QUESTION 230

Refer to the exhibit.



SVR-A in EPG-A/BD-A fails to reach SVR-B in EPG-B/BD-B. Which two conditions should be verified to analyze the traffic between the two EPGs? (Choose two.)

- A. A contract exists between EPG-A and EPG-B and allows the traffic.
- B. Limit Endpoint Learning is disabled on the bridge domain for EPG-B.
- C. SVR-B is learned as an endpoint in EPG-B from Node-112.
- D. EPG-A and EPG-B are excluded from the preferred group.
- E. The bridge domain for EPG-B floods ARP packets.

**Answer:** AC

#### NEW QUESTION 233

An engineer must configure multiple EPGs on a single access port in a large Cisco ACI fabric without using VMM integration. The relevant access policies and tenant policies have been created. A single AAEP is used to configure the access port in the fabric. Which two additional steps must be taken to complete the

configuration? (Choose two.)

- A. A contract must be defined between the EPGs
- B. The EPGs must be linked to the correct physical domain
- C. The EPGs must link directly to the corresponding AAEP
- D. The corresponding bridge domains must be configured in legacy mode
- E. The EPGs must be configured as static ports

**Answer:** BE

**Explanation:**

Attach EPG to Physical Domain (to AAEP through it) and add static ports to EPG

Contract is needed to allow communication between two EPGs, or EPG and L3out or between two L3out

**NEW QUESTION 234**

Which MAC address is an HSRP version 2?

- A. 0100.5E7F.FFFF
- B. 3799.9943.3000
- C. 0000.0C9F.F0C8
- D. 0000.0C07.AC1H

**Answer:** C

**NEW QUESTION 235**

A network engineer must perform a backup and restore of the Cisco Nexus 5000 Series Switch configuration. The backup must be made to an external backup server. The only protocol permitted between the Cisco Nexus Series switch and the backup server is UDP. The backup must be used when the current working configuration of the switch gets corrupted. Which set of steps must be taken to meet these requirements?

- A. 1. Perform a running-config backup to an SFTP serve
- B. 2. Copy backup-config from the SFTP server to the running-config file.
- C. 1. Perform a startup-config backup to a TFTP serve
- D. 2. Copy backup-config from the backup server to the running-config file.
- E. 1. Perform a running-config backup to an SCP serve
- F. 2. Copy running-config in the boot flash to the running-config file.
- G. 1. Perform a startup-config backup to an FTP serve
- H. 2. Copy startup-config in the boot flash to the running-config file.

**Answer:** B

**Explanation:**

TFTP runs on UDP 69 = Is correct

**NEW QUESTION 240**

An engineer needs to make an XML backup of Cisco UCS Manager. The backup should be transferred using an authenticated and encrypted tunnel and it should contain all system and service profiles configuration. Which command must be implemented to meet these requirements?

- ☐ create file scp://user@host35/backups/all-config9.bak all-configuration
- ☐ copy startup-config scp://user@host35/backups/all-config9.bak all-configuration
- ☒ create backup scp://user@host35/backups/all-config9.bak all-configuration
- ☐ copy running-config scp://user@host35/backups/all-config9.bak all-configuration

- A. Option A
- B. Option B
- C. Option C
- D. Option D

**Answer:** C

**Explanation:**

[https://www.cisco.com/en/US/docs/unified\\_computing/ucs/sw/cli/config/guide/1.4.1/CLI\\_Config\\_Guide\\_1\\_4\\_1](https://www.cisco.com/en/US/docs/unified_computing/ucs/sw/cli/config/guide/1.4.1/CLI_Config_Guide_1_4_1)

The following example creates a disabled all-configuration backup operation for hostname host35 and commits the transaction:

```
UCS-A# scope system
UCS-A /system* # create backup scp://user@host35/backups/all-config9.bak all-configuration disabled
Password:
UCS-A /system* # commit-buffer
UCS-A /system #
```

**NEW QUESTION 244**

A new user with access privileges in the Finance department moves to a new Admin department. The user must have access privileges to the Admin department

data and applications inside the Cisco UCS Manager Which set of changes must be implemented in Cisco UCS Central for the user to acquire the privileges?

- A. Create an Admin user account and remove the authentication service for the Finance privileges.
- B. Disable the Finance user account and add the authentication service for the Admin privileges.
- C. Create a new locale Admin and add the Admin department to the Admin local
- D. Delete the old locale
- E. Finance and remove the Finance department from the Finance locale.

**Answer:** C

#### NEW QUESTION 249

An engineer must configure OSPF routing on Cisco Nexus 9000 Series Switches. The IP subnet of the Eth 1/2 interface for both switches must be advertised via OSPF. However, these interfaces must not establish OSPF adjacency or send routing updates. The current OSPF adjacency over the interface Eth1/1 on SW1 and Eth1/1 on SW2 must remain unaffected. Which configuration must be applied to both Nexus switches to meet these requirements?

- A. interface ethernet 1/2passive-interface default
- B. Interface ethernet 1/2!p ospf network point-to-point
- C. interface ethernet 1/2ip ospf passive-interface
- D. interface ethernet 1/2no ip ospf passive-Interface

**Answer:** C

#### NEW QUESTION 254

A network architect wants to propose a scalable network monitoring solution in which data is repeatedly acquired from network devices. The solution must use a push model and provide close to realtime access to operational data. Which technology must be used to meet these requirements?

- A. streaming telemetry
- B. logging
- C. SNMPv3
- D. CLI-based scripting

**Answer:** A

#### Explanation:

<https://blogs.cisco.com/developer/its-time-to-move-away-from-snmp-and-cli-and-use-model-driven-telemetry>

Why Model-Driven Telemetry?

Model-Driven Telemetry is a new approach for network monitoring in which data is streamed from network devices continuously using a push model and provides near real-time access to operational statistics. You can precisely define what data you want to subscribe to using standard YANG models (YANG is a data modeling language used to model configuration and state data manipulated by the NETCONF protocol) with no CLI required. It allows network devices to continuously stream real time configuration and operating state information to subscribers. Structured data is published at a defined cadence, or on-change, based upon the subscription criteria and data type.

#### NEW QUESTION 256

An engineer changed a configuration and must perform a rollback. Which statement applies to a Cisco Nexus 5600 Series switch?

- A. Errors are skipped when an atomic rollback type is triggered.
- B. A user who is assigned to the network-operator user role can perform a rollback.
- C. The configuration rollback functionality is disabled when FCoE is enabled.
- D. A system checkpoint is generated automatically when the running configuration is saved to NVRAM.

**Answer:** C

#### Explanation:

[https://www.cisco.com/c/en/us/td/docs/switches/datacenter/nexus5000/sw/system\\_management/503\\_n1\\_1/cisco\\_n5k\\_system\\_mgmt\\_cg\\_rel\\_503\\_n1\\_1\\_chapter11.pdf](https://www.cisco.com/c/en/us/td/docs/switches/datacenter/nexus5000/sw/system_management/503_n1_1/cisco_n5k_system_mgmt_cg_rel_503_n1_1_chapter11.pdf)  
[https://www.google.com/url?sa=t&source=web&rct=j&url=https://www.cisco.com/c/en/us/td/docs/switches/datacenter/nexus5000/sw/system\\_management/503\\_n1\\_1/cisco\\_n5k\\_system\\_mgmt\\_cg\\_rel\\_503\\_n1\\_1\\_chapter11.pdf&ved=2ahUKEwjQ8ubTuK3xAhWm3jgGHZ9gB0oQFjAAegQIBRAC&usg=AOvVaw2j0nnvXiChAoVooxX2Qx0g](https://www.google.com/url?sa=t&source=web&rct=j&url=https://www.cisco.com/c/en/us/td/docs/switches/datacenter/nexus5000/sw/system_management/503_n1_1/cisco_n5k_system_mgmt_cg_rel_503_n1_1_chapter11.pdf&ved=2ahUKEwjQ8ubTuK3xAhWm3jgGHZ9gB0oQFjAAegQIBRAC&usg=AOvVaw2j0nnvXiChAoVooxX2Qx0g)

#### NEW QUESTION 260

Refer to the exhibit. A network engineer must configure an authentication solution for Cisco UCS with these conditions:

- Two-factor authentication must be enabled for all UCS user authentication.
- All AAA packets must be encrypted and use TCP port 49 to establish communication. Which set of actions needs these requirements?

- A. Create the LDAP provider.Change the LDAP group rule in an LDAP provider.
- B. Create the RADIUS group mapping.Change the RADIUS group rule in a RADIUS provider.
- C. Remove the LDAP provider.Create a TACACS+ provider in user management.
- D. Delete the LDAP group mapping.Create a RADIUS provider in user management.

**Answer:** C



**NEW QUESTION 262**

Which two actions should be taken before an upgrade is started on a Cisco MDS switch? (Choose two.)

- A. check the impact of the upgrade using the show install all impact command
- B. disable Cisco Fabric Services
- C. back up the configuration
- D. free up space on the USB3 device by deleting old Cisco NX-OS image files
- E. make the primary supervisor the active supervisor

**Answer:** AC

**Explanation:**

[https://www.cisco.com/c/en/us/td/docs/switches/datacenter/mds9000/sw/5\\_2/upgrade/guides/nx-os/upgrade.html](https://www.cisco.com/c/en/us/td/docs/switches/datacenter/mds9000/sw/5_2/upgrade/guides/nx-os/upgrade.html)

**NEW QUESTION 265**

Refer to the exhibit.

```
monitor fabric session mySession
description "This is my fabric ERSPAN session"
destination tenant t1 application appl epg epg1 destination-ip 192.0.20.123 source-ip-prefix 10.0.20.1
erspan-id 100
ip dscp 42
ip ttl 16
mtu 9216
exit
source interface eth 1/1 switch 101
direction tx
filter tenant t1 bd bdl
filter tenant t1 vrf vrfl
no shut
```

An engineer needs to implement a monitoring session that should meet the following requirements:

- Monitor traffic from leaf to leaf switches on a Cisco ACI network
- Support filtering traffic from Bridge Domain or VRF

Which configuration must be added to meet these requirements?

- A. interface eth 1/2 switch 101
- B. interface eth 1/2 leaf 101
- C. filter tenant t1 application app1 epg epg1
- D. application epg epg1 app1

**Answer:** C

**NEW QUESTION 269**

Which server policy is used to install new Cisco IMC software on a server?

- A. host firmware policy
- B. hypervisor firmware policy
- C. BIOS software policy
- D. Cisco IMC software policy

**Answer:** A

**Explanation:**

[https://www.cisco.com/c/en/us/td/docs/unified\\_computing/ucs/ucs-manager/CLI-User-Guides/Firmware-Mgmt/4-0/b\\_UCSM\\_CLI\\_Firmware\\_Management\\_Guide\\_4-0/b\\_UCSM\\_CLI\\_Firmware\\_Management\\_Guide\\_4-0\\_chapter\\_01.html#](https://www.cisco.com/c/en/us/td/docs/unified_computing/ucs/ucs-manager/CLI-User-Guides/Firmware-Mgmt/4-0/b_UCSM_CLI_Firmware_Management_Guide_4-0/b_UCSM_CLI_Firmware_Management_Guide_4-0_chapter_01.html#)

You can use host firmware packages by defining a host firmware policy as an attribute of a service profile template, which is an updating template. Any change made to the service profile template is automatically made to its instantiated service profiles. Subsequently, the servers associated with the service profiles are also upgraded in parallel with the firmware version.

Graphical user interface, text, application Description automatically generated

The Cisco UCS domains are categorized into domain groups in Cisco UCS Central for management purposes. You can manage firmware for each domain group separately at the domain group level or for all domain groups from the domain group root. Cisco UCS Central provides you the option to manage the following Cisco UCS domain firmware packages:

- **Capability Catalog**— One capability catalog per domain group. All Cisco UCS domains registered to a particular domain group will use the capability catalog defined in the domain group.
- **Infrastructure Firmware**— One infrastructure firmware policy per domain group . All Cisco UCS domains registered to a particular domain group will use the same Infrastructure firmware version defined in the domain group.
- **Host Firmware**— You can have more than one **host firmware policy** for the different host firmware components in a domain group. The Cisco UCS domains registered in the domain group will be able to choose any defined **host firmware policy** in the group. Cisco UCS Central provides you the option to upgrade the host firmware globally to all Cisco UCS domains in a domain group at the same time.

**Note**

For more information on managing firmware in Cisco UCS Central, see the Firmware Management chapters in the *Cisco UCS Central Administration Guide* and *Cisco UCS Central CLI Reference Manual*.

**NEW QUESTION 272**

Which behavior defines streaming telemetry as a push model in Cisco devices?

- A. Monitoring clients are pulling data from the network to see real-time statistics
- B. JSON encoded telemetry data is transported using the gRPC protocol
- C. The network devices send data in JSON or GPB format to configured endpoints
- D. Events and network changes generate telemetry data

**Answer:** D

**Explanation:**

<https://developer.cisco.com/docs/ios-xe/#!streaming-telemetry-quick-start-guide/streaming-telemetry>

**NEW QUESTION 273**

Which communication method does NFS use for requests between servers and clients?

- A. XDR
- B. SSC
- C. PRC
- D. SMB

**Answer:** C

**Explanation:**

<https://www-uxsup.csx.cam.ac.uk/pub/doc/redhat/WS2.1/rhl-rg-en-7.2/ch-nfs.html>

**NEW QUESTION 274**

A network architect must redesign a data center on OSPFv2. The network must perform fast reconvergence between directly connected switches. Which two actions must be taken to meet the requirement? (Choose two)

- A. Configure all links on AREA 0.
- B. Implement a virtual link between the switches.
- C. Use OSPF point-to-point links only.
- D. Set low OSPF hello and DEAD timers.
- E. Enable BFD for failure detection.

**Answer:** CD

**NEW QUESTION 279**

A Cisco Nexus 7000 Series switch runs VXLAN, and interface Ethernet 7/30 is configured as a trunk port. Which command set configures the switch to act as a gateway for VLAN 50?

```
interface Ethernet7/30 no switchport
no shutdown
service instance 1 vni no shutdown
```

- A. encapsulation profile VSI\_50\_TO\_500 default
- B. encapsulation profile vni VSI\_50\_TO\_500 dot1q 500 vni 50bridge-domain 500member vni 50 interface Vlan500ip address 10.50.50.51/24
- C. encapsulation profile vni VSI\_50\_TO\_500 dot1q 500 vni 50bridge-domain 500member vni 50 interface Bdi500jp address 10.50.50.51/24
- D. encapsulation profile vni VSI\_50\_TO\_500 dot1q 50 vni 500bridge-domain 50member vni 500 interface Bdi50ip address 10.50.50.51/24
- E. encapsulation profile vni VSI\_50\_TO\_500 dot1q 50 vni 500bridge-domain 50member vni 500 interface Vlan50ip address 10.50.50.51/24

Answer: C

NEW QUESTION 282

An engineer must ensure fabric redundancy when implementing NPV mode on a Cisco MDS 9000 Series Switch. Which action enables fabric redundancy?

- A. Connect the NPV devices to multiple upstream switches.
- B. Add a port channel to upstream switches.
- C. Configure the NPV devices to use on external FLOGI database.
- D. Use TE ports to connect to upstream switches.

Answer: B

NEW QUESTION 283

A customer undergoes an IT security review assessment. The auditor must have read-only access to the Cisco Nexus 9000 Series Switch to perform the configuration review. The customer implements this security role for the auditor:

role name audit

rule 1 permit command \* rule 2 - Output omitted username auditor password C4SAFF0B96EB0045\$c0 role audit Which configuration snippet must complete the configuration?

- A. deny command write\*
- B. permit command enable
- C. permit command show \*
- D. deny command configure terminal

Answer: D

NEW QUESTION 286

An engineer must configuration a backup and restore of Cisco UCS Manager during the weekend maintenance windows. The configuration must be restored to its original state on Monday morning. The end users can make changes only to the Service Profile configuration. Which set of actions meets these requirements?

- A. Schedule a system backup to run at the start of every weekend and manually import the backup on Monday morning.
- B. Schedule a system backup to run at the start of every weekend and schedule the import of the backup to run on Monday morning
- C. Schedule a logical backup to run at the start of every weekend and manually import the backup on Monday morning.
- D. Schedule a logical backup to run at the start of every weekend and schedule the import of the backup to run on Monday morning.

Answer: B

NEW QUESTION 288

An engineer is implementing NetFlow on a Cisco Nexus 7000 Series Switch. Drag and drop the NetFlow commands from the left into the correct order they must be entered on the right.

N7K-1(config)# interface <interface> N7K-1(config-if)# ip flow monitor NetflowMonitor input	Step 1
N7K-1(config)# feature netflow	Step 2
N7K-1(config)# flow exporter NetflowMonitor N7K-1(config)# flow record NetflowMonitor	Step 3
N7K-1(config)# flow monitor NetflowMonitor	Step 4

- A. Mastered
- B. Not Mastered

Answer: A

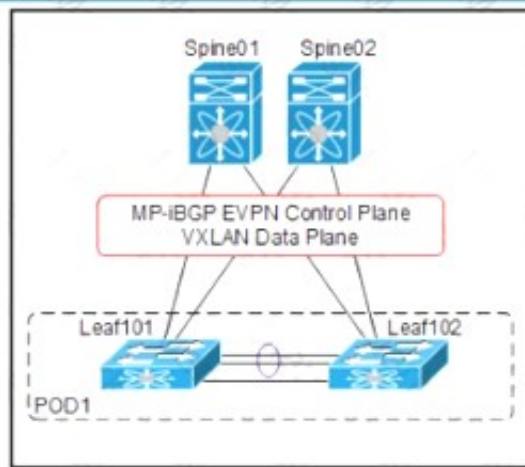
Explanation:

- 1- feature netflow
- 2- flow exporter
- 3- flow monitor
- 4- interface<interface>

NEW QUESTION 289

Refer to the exhibit.





```
SPINE-01#show run pim
ip pim rp-address 10.255.0.100 group-list 225.0.0.0/8
ip pim bsr rp-candidate loopback1 group-list 225.0.0.0/8
ip pim ssm range 232.0.0.0/8
ip pim anycast-rp 10.255.0.100 10.10.0.1
ip pim anycast-rp 10.255.0.100 10.10.0.2
!
!
SPINE-01#show run interface loopback1
interface loopback1
ip router ospf 1 area 0.0.0.0
ip pim sparse-mode
```

An engineer must implement VXLAN with anycast gateway. To accomplish this, an engineer must set up PIM Source-Specific Multicast for host reachability. Which IP address must be applied to interface loopback1 to accomplish this goal?

- A. 255.0.0.1/8
- B. 255.0.100
- C. 10.10.0.1/32
- D. 10.10.0.2/32

**Answer: B**

#### NEW QUESTION 291

Refer to the exhibit.

```
1.130599 192.168.254.1 -> 192.168.254.13 TCP 60 29652 > ssh [ACK] Seq=1 Ack=53
Win=32449 Len=0
1.136261 00:8e:73:a2:41:0e -> Spanning-tree-(for-bridges)_00 STP 60 Conf. Root =
8192/10/ec:e1:a9:df:6c:80 Cost = 22 Port = 0x800e
1.373417 192.168.254.13 -> 192.168.254.1 SSH 106 Encrypted response packet len=52
1.570377 192.168.254.1 -> 192.168.254.13 TCP 60 29652 > ssh [ACK] Seq=1 Ack=105
Win=32786 Len=0
1.815558 192.168.254.13 -> 192.168.254.1 SSH 106 Encrypted response packet len=52
2.021840 192.168.254.1 -> 192.168.254.13 TCP 60 29652 > ssh [ACK] Seq=1 Ack=157
Win=32773 Len=0
2.525173 192.168.254.13 -> 192.168.254.1 SSH 106 Encrypted response packet len=52
2.731382 192.168.254.1 -> 192.168.254.13 TCP 60 29652 > ssh [ACK] Seq=1 Ack=209
Win=32760 Len=0
2.947365 192.168.254.13 -> 192.168.254.1 NTP 90 NTP Version 2, client
2.947623 192.168.254.1 -> 192.168.254.13 NTP 90 NTP Version 2, server
3.138157 00:8e:73:a2:41:0e -> Spanning-tree-(for-bridges)_00 STP 60 Conf. Root =
8192/10/ec:e1:a9:df:6c:80 Cost = 22 Port = 0x800e
3.139400 192.168.254.13 -> 192.168.254.1 SSH 106 Encrypted response packet len=52
3.270728 192.168.254.4 -> 239.255.70.83 UDP 166 Source port: cfs Destination port:
cfs
3.341123 192.168.254.1 -> 192.168.254.13 TCP 60 29652 > ssh [ACK] Seq=1 Ack=261
Win=32747 Len=0
3.835409 192.168.254.13 -> 192.168.254.1 SSH 106 Encrypted response packet len=52
4.041411 192.168.254.1 -> 192.168.254.13 TCP 60 29652 > ssh [ACK] Seq=1 Ack=313
Win=32734 Len=0
4.535284 192.168.254.13 -> 192.168.254.1 SSH 106 Encrypted response packet len=52
4.741072 192.168.254.1 -> 192.168.254.13 TCP 60 29652 > ssh [ACK] Seq=1 Ack=365
Win=32721 Len=0
4.947308 192.168.254.13 -> 192.168.254.1 NTP 90 NTP Version 2, client
4.947519 192.168.254.1 -> 192.168.254.13 NTP 90 NTP Version 2, server
5.139627 00:8e:73:a2:41:0e -> Spanning-tree-(for-bridges)_00 STP 60 Conf. Root =
8192/10/ec:e1:a9:df:6c:80 Cost = 22 Port = 0x800e
5.140867 192.168.254.13 -> 192.168.254.1 SSH 106 Encrypted response packet len=52
```

Cisco Fabric Services is enabled in the network. Which type of IP address is used by the Cisco Fabric Services protocol?

- A. IPv4 unicast address
- B. IPv4 multicast address
- C. IPv4 gateway address
- D. IPv4 anycast address

**Answer: B**

#### NEW QUESTION 295

An engineer is automating a Cisco Nexus 9000 Series Switch using the NX-OS API. Which code snippet creates a local user called "tacuser" with an expiration date of 22 November?

A)

☐ POST http://10.91.12.14/api/mo/sys/userext.json

```
{
  "aaaUserEp": {
    "children": [
      {
        "aaaUser": {
          "attributes": {
            "allowExpired": "no",
            "expiration": "2021-11-22T00:00:00.000+00:00",
            "expires": "yes",
            "name": "tacuser",
            "pwd": "AKw47PS3:g4M410:Fs01",
            "pwdEncryptType": "clear"
          }
        }
      }
    ]
  }
}
```

B)

☐ GET http://10.12.14.91/api/mo/sys/userext/user-tacuser.json

```
{
  {
    "aaaUserEp": {
      "attributes": {
        "childAction": "add",
        "dn": "sys/userext",
        "lcOwn": "local",
        "modTs": "2021-11-22T00:00:00.000+00:00",
        "pwdSecureMode": "yes",
        "pwdStrengthCheck": "no",
        "status": "",
        "uid": "0"
      }
    }
  }
}
```

C)

☐ HEAD http://10.14.91.12/api/policymgr/mo/uni/userext.json

```
{
  "aaaUser": {
    "name": "tacuser",
    "phone": "",
    "pwd": "H97NW894SDASgQL",
    "expire": "yes",
    "aaaUserDomain": {
      "description": "",
      "name": "all",
      "rn": "userdomain-all"
    }
  }
}
```

☐ PUT http://10.91.14.12/api/policymgr/mo/uni/

```
{
  "aaaUser": {
    "email": "tacuser@cisco.com",
    "name": "tacuser",
    "createdAt": "2020-09-11T00:00:00.090210Z",
    "authorizations": {
      "authorizedZone": "VDC1",
      "expiresAt": "2021-11-22T00:00:00.000+00:00",
      "authorizedByName": "OPS",
      "authorizedByEmail": "ops@company.com"
    }
  }
}
```

- A. Option A
- B. Option B
- C. Option C

**Answer:** A

#### NEW QUESTION 298

An engineer must configure a monitoring solution for a Cisco Nexus 9000 Series Switch based data center. The solution must provide real-time insight into the network health with subscription-based monitoring. The monitoring must be initiated from the client side, and the data must be sent via encryption. Which configuration steps complete the configuration?

- ☐ Set the telemetry feature on the Nexus switch.  
Specify a certificate for telemetry transport.  
Configure a sensor group and destination.
- ☐ Enable GRPC on the Nexus switch.  
Generate a certificate.  
Configure gNMI inputs in Telegraf and output to InfluxDB.
- ☐ Configure Grafana on the Nexus switch.  
Specify the logging certificate.  
Enable syslog level 7 export to Grafana.
- ☐ Activate SNMPv3 on the Nexus switch.  
Set the globalEnforcePriv parameter.  
Configure an SNMP agent to poll information.

- A. Option A
- B. Option B
- C. Option C
- D. Option D

**Answer:** A

#### NEW QUESTION 299

A customer asks an engineer to develop a framework that will be used to replace the process of the manual device configuration of Cisco NX-OS devices. The engineer plans to use the programmatic interface that meets these requirements:

- > The development team is familiar with Windows-based scripting environment using PowerShell.
- > The customer's security requirements mandate the use of HTTPS transport.

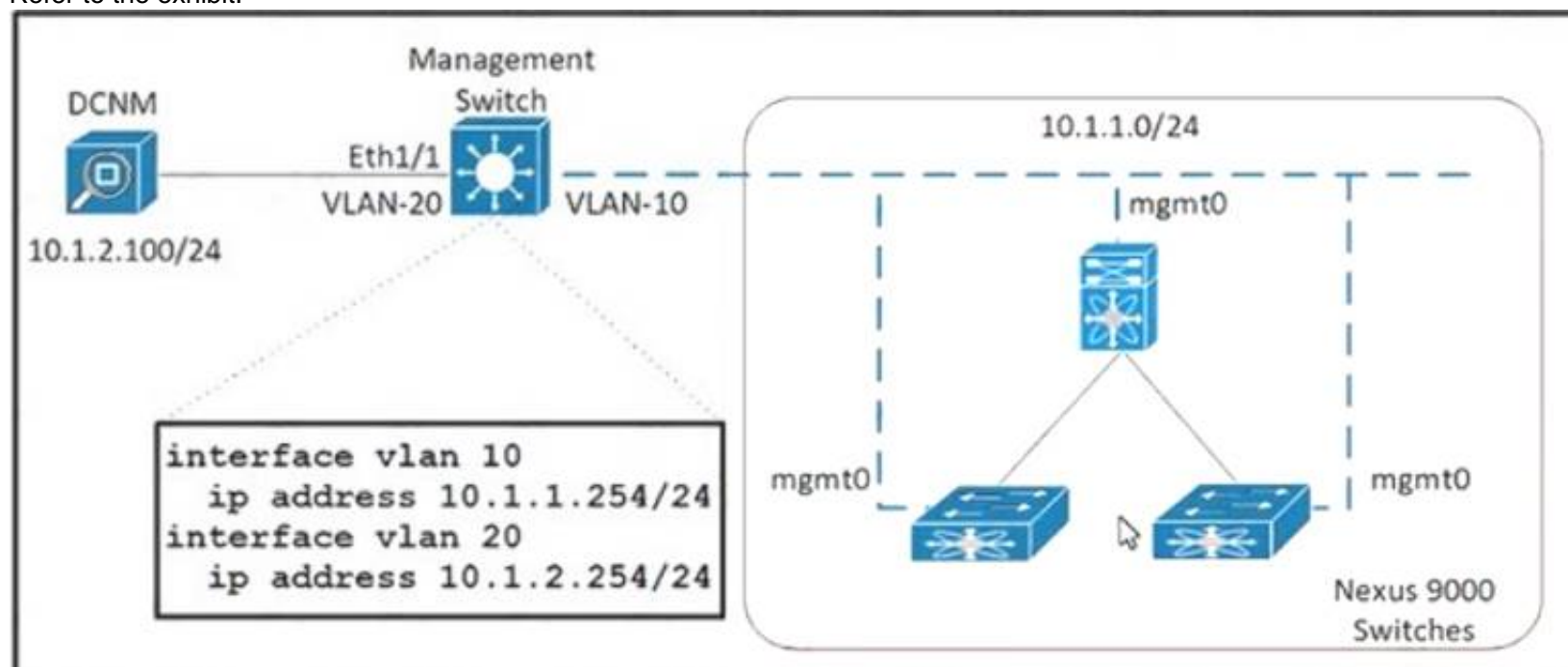
Which solution must be used to meet these requirements?

- A. NX-API
- B. VISORE
- C. Open Agent Container
- D. NETCONF-YANG

**Answer:** A

#### NEW QUESTION 300

Refer to the exhibit.



An engineer must deploy 70 Cisco Nexus 9000 Series Switches in a new environment. The requirement is to use Cisco DCNM as a management tool to deploy, manage and monitor the new switches. In addition, DCNM is configured with a zero-touch POAP feature to facilitate fabric creation. Which action meets these requirements?

- A. Configure SNMP on the new Nexus switches to send SNMP messages to the DCNM server
- B. Create a SPAN session on the management switch to send the traffic from VLAN 10 to Ethernet 1/1.
- C. Configure an IP helper address on interface VLAN 10 of the management switch
- D. Create common credentials on all of the new Nexus switches



**Answer:** C

**NEW QUESTION 302**

Refer to the exhibit.

An engineer must configure a Fibre Channel device alias named TEST for a device attached to port fc1/9 of a Cisco Nexus Series Switch. Which command set completes the configuration?

A)

```
SITE-A-MDS-Fabric-A# configure terminal
SITE-A-MDS-Fabric-A (config)# device-alias database
SITE-A-MDS-Fabric-A (config-device-alias-db)# device-alias name TEST pwwn 50:00:14:42:d0:0c:f5:20
SITE-A-MDS-Fabric-A (config-device-alias-db)# device-alias commit
```

B)

```
SITE-A-MDS-Fabric-A# configure terminal
SITE-A-MDS-Fabric-A (config)# device-alias database
SITE-A-MDS-Fabric-A (config-device-alias-db)# device-alias name TEST pwwn 50:00:14:42:d0:0c:f5:20
SITE-A-MDS-Fabric-A (config-device-alias-db)# exit
```

C)

```
SITE-A-MDS-Fabric-A# configure terminal
SITE-A-MDS-Fabric-A (config)# device-alias database
SITE-A-MDS-Fabric-A (config-device-alias-db)# device-alias name TEST pwwn 50:00:14:40:47:b0:0c:f5
SITE-A-MDS-Fabric-A (config-device-alias-db)# exit
```

D)

```
SITE-A-MDS-Fabric-A# device-alias database
SITE-A-MDS-Fabric-A (device-alias-db)# device-alias name TEST pwwn 50:00:14:40:47:b0:0c:f5
SITE-A-MDS-Fabric-A (config-device-alias-db)# device-alias commit
```

- A. Option A
- B. Option B
- C. Option C
- D. Option D

**Answer:** B

**NEW QUESTION 306**

An engineer is asked to manage a large-scale data center and collect information from multiple Cisco NX-OS devices using Cisco NX-OS Data Management Engine model. Which technology should be used to accomplish this goal?

- A. NX-API REST
- B. NETCONF
- C. JSON-RPC
- D. NX Yang

**Answer:** A

**Explanation:**

[https://www.cisco.com/c/en/us/td/docs/switches/datacenter/nexus9000/sw/7-x/programmability/guide/b\\_Cisco\\_Nexus\\_9000\\_Series\\_NX-OS\\_Programmability\\_Guide\\_7x/b\\_Cisco\\_Nexus\\_9000\\_Series\\_NXOS\\_Programmability\\_Guide\\_7x\\_chapter\\_010001.pdf](https://www.cisco.com/c/en/us/td/docs/switches/datacenter/nexus9000/sw/7-x/programmability/guide/b_Cisco_Nexus_9000_Series_NX-OS_Programmability_Guide_7x/b_Cisco_Nexus_9000_Series_NXOS_Programmability_Guide_7x_chapter_010001.pdf)

**NEW QUESTION 310**

An engineer is configuring a backup operation on the existing Cisco UCS environment using a logical configuration. Which configuration is expected to be saved by using this backup type?

- A. systems
- B. roles
- C. service profiles
- D. servers

**Answer:** C

**Explanation:**

Graphical user interface, text, application, email Description automatically generated

- [Import Operations](#)
- [Restoring the Configuration for a Fabric Interconnect](#)

### Backup and Export Configuration

When you perform a backup through Cisco UCS Manager, you take a snapshot of all or part of the system configuration and export the file to a location on your network. You cannot use Cisco UCS Manager to back up data on the servers.

You can perform a backup while the system is up and running. The backup operation only saves information from the management plane. It does not have any impact on the server or network traffic.

### Backup Types

You can perform one or more of the following types of backups through Cisco UCS Manager:

- **Full state**—A binary file that includes a snapshot of the entire system. You can use the file generated from this backup to restore the system during disaster recovery. This file can restore or rebuild the configuration on the original fabric interconnect, or recreate the configuration on a different fabric interconnect. You cannot use this file for an import.
- **All configuration**—An XML file that includes all system and logical configuration settings. You can use the file generated from this backup to import these configuration settings to the original fabric interconnect or to a different fabric interconnect. You cannot use this file for a system restore.
- **System configuration**—An XML file that includes all system configuration settings such as usernames, roles, and locales. You can use the file generated from this backup to import these configuration settings to the original fabric interconnect or to a different fabric interconnect. You cannot use this file for a system restore.
- **Logical configuration**—An XML file that includes all logical configuration settings such as service profiles, VLANs, VSANs, pools, and policies. You can use the file generated from this backup to import these configuration settings to the original fabric interconnect or to a different fabric interconnect. You cannot use this file for a system restore.

### Considerations and Recommendations for Backup Operations

[https://www.cisco.com/en/US/docs/unified\\_computing/ucs/sw/gui/config/guide/141/UCSM\\_GUI\\_Configuration\\_Guide\\_141\\_chapter43.html](https://www.cisco.com/en/US/docs/unified_computing/ucs/sw/gui/config/guide/141/UCSM_GUI_Configuration_Guide_141_chapter43.html)

#### NEW QUESTION 313

A network engineer must determine the cooling requirements for a Cisco UCS C-Series Rack Server. The server with PCIe cards is configured with a fan configuration policy. Which configuration should be used for the fan policy of the server?

- ☐ `server # scope chassis`  
`server /chassis # scope fan-policy`  
`server /chassis/fan-policy # set fan-policy high-power`  
`server /chassis/fan-policy* # commit`
- ☐ `server # scope chassis`  
`server /chassis # scope fan-policy`  
`server /chassis/fan-policy # set fan-policy balanced`  
`server /chassis/fan-policy* # commit`
- ☐ `server # scope server`  
`server /server # scope fan-policy`  
`server /server /fan-policy # set fan-policy acoustic`  
`server /server /fan-policy* # commit`
- ☐ `server # scope server`  
`server /server # scope fan-policy`  
`server /server /fan-policy # set fan-policy low-power`  
`server /server /fan-policy* # commit`

- A. Option A
- B. Option B
- C. Option C
- D. Option D

**Answer: A**

#### NEW QUESTION 316

An engineer is configuring HTTPS access to Cisco UCS Manager. The engineer created a keyring and created the certificate request for the keyring. Cisco UCS Manager continues to receive untrusted messages from a Firefox browser and a Chrome browser. Which action must be taken as the next step in the HTTPS access configuration?

- A. Create a trusted point
- B. Sign the certificate using the Cisco UCS Manager.
- C. Obtain a validated certificate from Cisco
- D. Install a trusted certificate in the browser store

**Answer: A**

#### NEW QUESTION 318

Drag and drop the characteristics from the left onto the NAS protocols on the right. Some characteristics are used more than once

- used to boot VHDX files
- used to boot VMDK files
- uses lease-based model for file locking
- used to provide shared storage for hypervisors

**NFS**

**SMB/CIFS**

- A. Mastered
- B. Not Mastered

**Answer:** A

#### Explanation:

Diagram Description automatically generated

NFS:

- Used to boot VMDK files
  - Uses lease-based model for file locking
  - Used to provide shared storage for hypervisors
- SMB/CIFS:
- Used to boot VHDX files
  - Used to provide shared storage for hypervisors

#### NEW QUESTION 321

An administrator is implementing DCNM so that events are triggered when monitored traffic exceeds the configured present utilization threshold. The requirement is to configuration a maximum limit of 39860437 bytes that applies directly to the statistics collected as a ratio of the total link capacity. Which DCNM performance monitoring configuration parameter must be implemented to achieve this result?

- A. Absolution Values
- B. Baseline
- C. Util%
- D. Per port Monitoring

**Answer:** A

#### NEW QUESTION 324

A company plans to deploy a Cisco HyperFlex solution for data-intensive applications and databases. The proposed solution should offer the highest performance with high consistency and low latency. Which Cisco HyperFlex storage configuration should be used?

- A. All-HDD
- B. All-NVMe
- C. All-Flash
- D. Hybrid

**Answer:** B

#### NEW QUESTION 327

An engineer is implementing security on the Cisco MDS 9000 switch. Drag drop the descriptions from the left onto the correct security features on the right.

- can be distributed via fabric services
- uses the Exchange Fabric Membership Data protocol
- allows a preconfigured set of Fibre Channel devices to logically connect to SAN ports
- prevent unauthorized switches from joining the fabric or disrupting current fabric operations

**Fabric Binding**

Target 1

Target 2

**Port Security**

Target 3

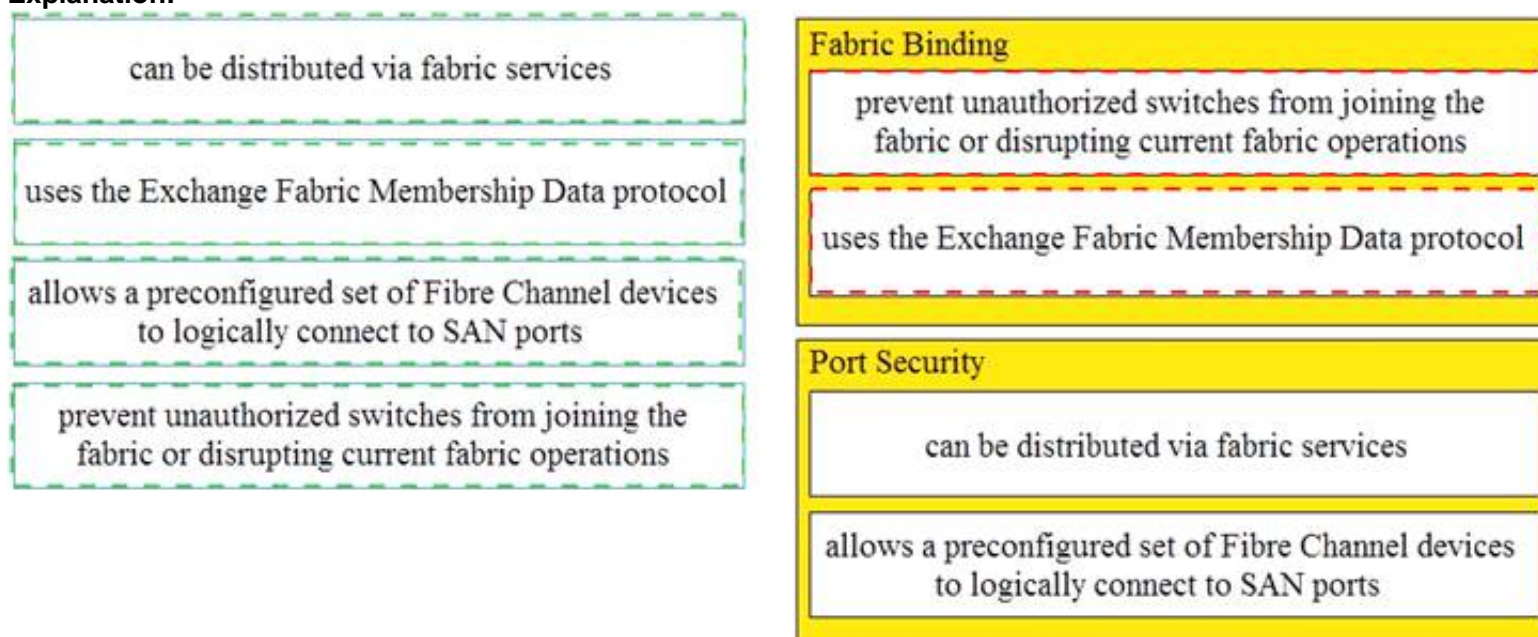
Target 4



- A. Mastered
- B. Not Mastered

**Answer:** A

**Explanation:**



### NEW QUESTION 332

Refer to the exhibit.

```
import time
import cli

date= time.strftime('%Y%m%d')
file= ('fusion-config_') + date
cli.execute ('copy running-config ftp://10.183.249.182/FusionSW/' + file)
exit()
```

What is the result of executing this python code?

- A. It backs up Cisco switches to Cisco Prime infrastructure.
- B. It sends the switch configuration to Cisco TAC.
- C. It sends a Cisco device backup to a remote destination.
- D. It schedules a backup on a Cisco switch using EEM.

**Answer:** C

### NEW QUESTION 333

An engineer must implement a new VRF that permits communication between all endpoint groups (EPGs) by default. The new EPGs and bridge domains (BDs) that are created in the new VRF must not require additional configuration to permit traffic between the newly created EPGs or BDs. Which action accomplishes this goal?

- A. Provide and consume a permit any contract on the VRF level
- B. Create a VRF in the common tenant.
- C. Place all EPGs in the preferred group.
- D. Implement a global contract.

**Answer:** C

### NEW QUESTION 334

An engineer is performing an ISSU upgrade on the Cisco MDS 9000 Series Switch. What is the impact on the control plane of the switch?

- A. It remains down until the next reboot.
- B. It remains up throughout the update.
- C. It remains down for more than 80 seconds but less than 140 seconds.
- D. It is down for less than 80 seconds.

**Answer:** D

### NEW QUESTION 339

A SAN administrator must Implement Infrastructure monitoring for the Fibre Channel storage environment. The storage environment consists of a standalone Cisco Nexus 9000 Series Switch and Cisco MDS 9000 Series Switches. The goal is to be able to visualize the SAN support VXLAN overlays and identify storage slow drain issues. Which monitoring solution accomplishes this task?

- A. Cisco Prime Infrastructure
- B. Cisco DCNM
- C. Cisco APIC
- D. Cisco Intersight

**Answer:** B

#### NEW QUESTION 343

A network engineer must configure a power redundancy policy on a Cisco UCS C-Series Rack Server. The power redundancy must support two power sources being used to power the server. Which configuration should be applied to meet the requirement?

- Ⓐ `server# scope org /`  
`server /org # scope psu-policy`  
`server /org/psu-policy # set redundancy N+1`  
`server /org/psu-policy* # commit-buffer`
- Ⓑ `server# scope org /`  
`server /org # scope psu-policy`  
`server /org/psu-policy # set psu-redundancy-policy grid`  
`server /org/psu-redundancy-policy* # commit-buffer`
- Ⓒ `server# scope org /`  
`server /org # scope psu-policy`  
`server /org/psu-policy # set psu-redundancy-policy N+1`  
`server /org/psu-redundancy-policy* # commit-buffer`
- Ⓓ `server# scope org /`  
`server /org # scope psu-policy`  
`server /org/psu-policy # set redundancy grid`  
`server /org/psu-policy* # commit-buffer`

- A. Option A
- B. Option B
- C. Option C
- D. Option D

**Answer:** D

#### Explanation:

[https://www.cisco.com/c/en/us/td/docs/unified\\_computing/ucs/ucs-manager/CLI-User-Guides/Server-Mgmt/3-1](https://www.cisco.com/c/en/us/td/docs/unified_computing/ucs/ucs-manager/CLI-User-Guides/Server-Mgmt/3-1) The command "N+1" is invalid. The command should be "n-plus-1"

	Command or Action	Purpose
Step 1	UCS-A# <code>scope org org-name</code>	Enters organization mode for the specified organization. To enter the root organization mode, type <code>/</code> as the <code>org-name</code> .
Step 2	UCS-A /org # <code>scope psu-policy</code>	Enters PSU policy mode.
Step 3	UCS-A /org/psu-policy # <code>set redundancy {grid   n-plus-1   non-redund }</code>	Specifies one of the following redundancy types: <ul style="list-style-type: none"> <li>• <b>grid</b> –Two power sources are turned on, or the chassis requires greater than N+1 redundancy. If one source fails (which causes a loss of power to one or two PSUs), the surviving PSUs on the other power circuit continue to provide power to the chassis.</li> <li>• <b>n-plus-1</b> –The total number of PSUs to satisfy non-redundancy, plus one additional PSU for redundancy, are turned on and equally share the power load for the chassis. If any additional PSUs are installed, Cisco UCS Manager sets them to a "turned-off" state.</li> <li>• <b>non-redund</b> –All installed power supplies (PSUs) are turned on and the load is evenly balanced. Only smaller configurations (requiring less than 2500W) can be powered by a single PSU.</li> </ul> For more information about power redundancy, see the <i>Cisco UCS 5108 Server Chassis Installation Guide</i> .
Step 4	UCS-A /org/psu-policy # <code>commit-buffer</code>	Commits the transaction to the system configuration.

#### NEW QUESTION 345

An engineer must configure a control plane policy on a Cisco Nexus 9000 Series Switch that is located at IP 192.168.20.1 that meets those requirements

- Only HTTP, RDP, and ICMP traffic is permitted from subnet 192.168.10.0/24.
- The committed information rate must be 54000 pps.
- The burst size must be 128 packets.
- Any other traffic must be dropped.

Drag and drop the code snippets from the bottom onto the blanks in the code on the top to complete the configuration. Not all code snippets are used

ip access-list permithosts
permit tcp 192.168.10.0/24
permit tcp 192.168.10.0/24 host 192.168.20.1 eq 3389
permit icmp 192.168.10.0/24 host 192.168.20.1
class-map type control-plane match-any hostsmap
match
policy-map type control-plane hostsmap
police cir 54000 pps bc 128 packets

host 192.168.20.1 eq 443

conform transmit violate drop

class permithosts

class hostsmap

access-group name permithosts

conform transmit violate drop

- A. Mastered  
B. Not Mastered

**Answer:** A

**Explanation:**

Text Description automatically generated

**NEW QUESTION 349**

Refer to the exhibit.

ACI-Leaf1# show ip route vrf DATACENTER:DC
10.20.1.0/24, ubest/mbest: 1/o, attached, direct, pervasive
\*via 10.0.8.65%overlay-1, [1/o], 4w3d, static
172.16.100.0/24, ubest/mbest: 1/o
\*via 10.1.168.95%overlay-1, [200/5], 3wod, bgp-132, internal, tag 132 (mpls-vpn)
172.16.99.0/24, ubest/mbest: 1/o
\*via 10.0.1.14, [20/o], 3wod, bgp-132, external, tag 200

Which two statements describe the routing table of the leaf switch? (Choose two.)

- A. The next hop 10.0.8.65 for route 10.20.1.0/24 is the TEP address of a border leaf in ACI.  
B. The next hop 10.0.1.14 for route 172.16.99.0/24 is the TEP address of a border leaf in ACI.  
C. The next hop 10.1.168.95 for route 172.16.100.0/24 is the TEP address of a border leaf in ACI.  
D. 172.16.100.0/24 is a BD subnet in ACI.  
E. 10.20.1.0/24 is a BD subnet in ACI.

**Answer:** CE

**NEW QUESTION 351**

An engineer is performing a configuration on a Cisco Nexus 5000 Series Switch. The requirement is for the current Fibre Channel IDs in VSAN 120 to be saved across reboots. The Cisco environment also must integrate with a third-party solution that requires persistent Fibre Channel IDs for the VSAN The WWN of the Cisco switch must be 33:e8:00:05:30:00:16:df and its Fibre Channel ID 0x070128 Which command set meets these requirements?

- ☒ fabric-binding database vsan 120  
vsan 120 wwn 33:e8:00:05:30:00:16:df fcid 0x070128
- ☐ vsan 120 wwn 33:e8:00:05:30:00:16:df fcid 0x070128  
fcdomain fcid preserve vsan 120
- ☐ vsan 120 wwn 33:e8:00:05:30:00:16:df fcid 0x070128  
fabric-binding activate vsan 120  
purge fcdomain fcid vsan 4
- ☐ fcdomain fcid database  
vsan 120 wwn 33:e8:00:05:30:00:16:df fcid 0x070128  
fcdomain fcid persistent vsan 120

- A. Option A  
B. Option B  
C. Option C  
D. Option D

**Answer:** D



**NEW QUESTION 356**

Which storage protocol reduces file locks by using leasing?

- A. CIFS
- B. NFS 4
- C. NFS 3
- D. SMB

**Answer:** D

**Explanation:**

<https://www.ciscolive.com/c/dam/r/ciscolive/apjc/docs/2016/pdf/BRKCOM-1211.pdf>

- **SMB Directory Leasing**
  - Ability to cache file and directory metadata
  - Branch offices need to make less round trips to the central server

**NEW QUESTION 358**

A Cisco UCS user called "Employee1" accidentally changed the boot policy of the Cisco UCS server at the Cisco UCS Manager root level. This change impacted all service profiles and their storage connectivity was lost. The system administrator wants to prevent this issue from recurring in the future. The new security policy mandates that access must be restricted up to the organization level and prevent other users from modifying root policies. Which action must be taken to meet these requirements?

- A. Modify the privilege level assigned to the user
- B. Define a custom user role and assign it to users
- C. Assign the user "Employee1" the network-operator role
- D. Assign users to a specific Cisco UCS locale

**Answer:** D

**Explanation:**

[https://www.cisco.com/c/en/us/td/docs/unified\\_computing/ucs/ucs-manager/GUI-User-Guides/Admin-Managem](https://www.cisco.com/c/en/us/td/docs/unified_computing/ucs/ucs-manager/GUI-User-Guides/Admin-Managem)

## Locales

### User Locales

You can assign a user to one or more locales. Each locale defines one or more organizations (domains) to which a user can access. **Access is usually limited to the organizations specified in the locale.** An exception is a locale without any organizations. It provides unrestricted access to system resources in all organizations.

A Cisco UCS domain can contain up to 48 user locales. Any user locales configured after the first 48 are accepted, but are inactive with faults raised.

**NEW QUESTION 362**

An engineer troubleshoots an Fibre Channel deployment on a Cisco MDS 9000 Series Switch. What does this output indicate about port channel 1?

```
mds9509# show int po1
port-channel 1 is trunking
Hardware is Fibre Channel
Port WWN is 24:01:00:0d:ec:20:ba:00
Admin port mode is F, trunk mode is on
snmp link state traps are enabled
Port mode is TF
Port vsan is 1
Speed is 8 Gbps
Trunk vsans (admin allowed and active) (1,20)
Trunk vsans (up) (1,20)
Trunk vsans (isolated) ()
Trunk vsans (initializing) ()
5 minutes input rate 112 bits/sec, 14 bytes/sec, 0 frames/sec
5 minutes output rate 152 bits/sec, 19 bytes/sec, 0 frames/sec
25787798 frames input, 14359038212 bytes
0 discards, 0 errors
0 CRC, 0 unknown class
0 too long, 0 too short
23082 frames output, 1013152 bytes
0 discards, 0 errors
18 input OLS, 14 LRR, 29 NOS, 0 loop inits
17 output OLS, 0 LRR, 21 NOS, 0 loop inits
Member[1] : fc4/2
Member[2] : fc4/8
Interface last changed at Thu Mar 6 06:27:36 2020
```

- A. Port channel 1 is configured to be an ISL.
- B. Port channel 1 is configured to connect to a host bus adapter.
- C. Port channel 1 is configured to connect to an NPIV switch.
- D. Port channel 1 is configured to connect to an NPV switch.

**Answer:** A

#### NEW QUESTION 367

Refer to the exhibit.

```
switch(config)# feature dhcp
switch(config)# ip dhcp snooping
switch(config)# service dhcp
switch(config)# ip dhcp snooping vlan 100,200,250-252
switch(config)# ip dhcp relay information option
```

Which action is taken to ensure that the relay agent forwards the DHCP BOOTREQUEST packet to a DHCP server?

- A. Configure the interface of the DHCP server as untrusted.
- B. Configure the IP address of the DHCP server.
- C. Enable the DHCP relay agent.
- D. Verify the DHCP snooping bindings.

**Answer:** B

#### Explanation:

[https://www.cisco.com/c/en/us/td/docs/switches/datacenter/sw/4\\_0/dcnm/security/configuration/guide/sec\\_dcnm](https://www.cisco.com/c/en/us/td/docs/switches/datacenter/sw/4_0/dcnm/security/configuration/guide/sec_dcnm) Text Description automatically generated

## Configuring a DHCP Server Address on a VLAN Interface

You can configure a DHCP server IP address on a VLAN interface (sometimes referred to as a switched virtual interface or SVI). When an inbound DHCP BOOTREQUEST packet arrives on the VLAN interface, the relay agent forwards the packet to the IP address specified.

#### NEW QUESTION 371

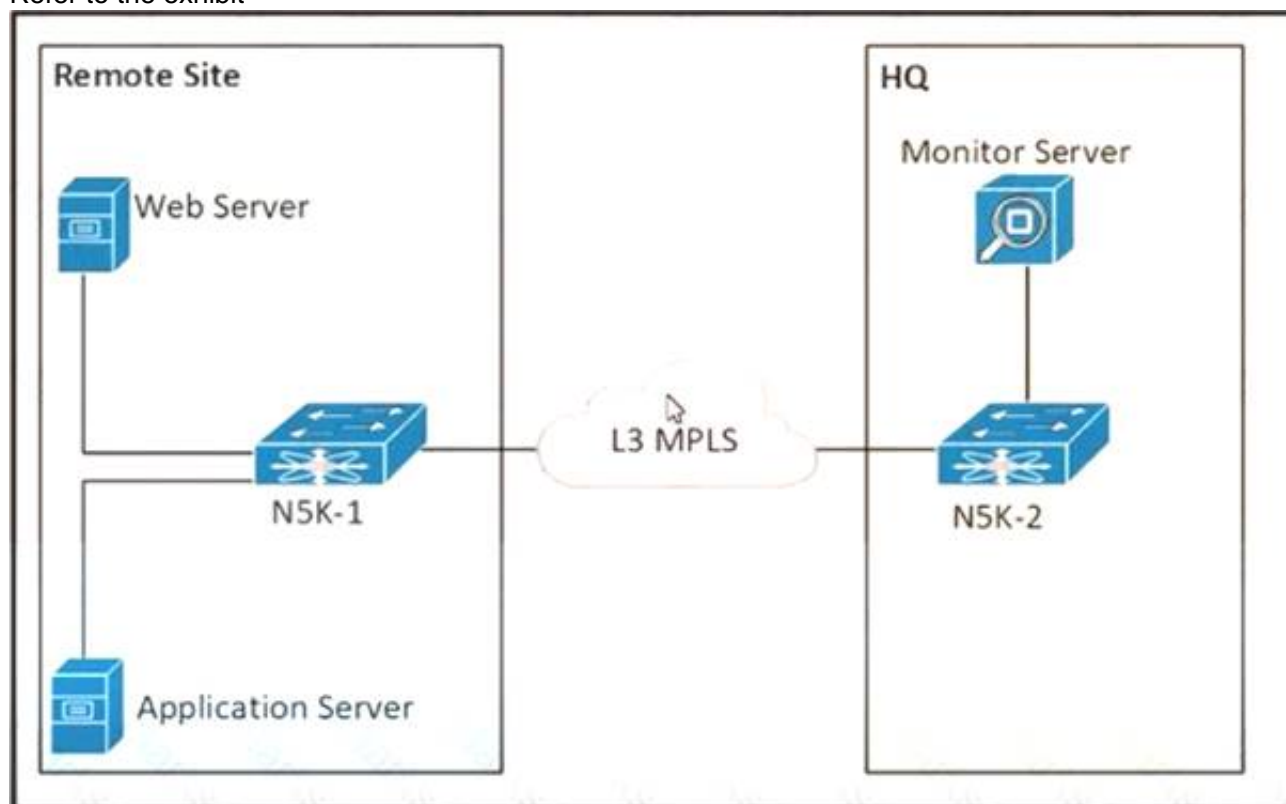
An engineer must suggest a deployment model for a newly developed application. The engineer has a small starting budget and lacks technical knowledge and infrastructure to implement storage, operating system, and database services to support the application deployment. The engineer also needs usage data related to the service and the ability to elastically scale the deployment as customer demands grow. Which two models must be used to meet the requirements? (Choose two.)

- A. private cloud
- B. platform as a service
- C. software as a service
- D. infrastructure as a service
- E. public cloud

**Answer:** DE

#### NEW QUESTION 373

Refer to the exhibit



The communication between the web server and the application server experiences poor performance. The network engineer must collect the traffic between the two servers, including the payload for more investigation. The collected data must be sent from the remote site to the headquarters. Which action accomplishes this goal?

- A. Configure an ERSPAN session between N5K-1 and N5K-2.
- B. Configure a SPAN session between N5K-1 and N5K-2
- C. Configure SNMP on N5K-1 to send the data to the monitor server
- D. Configure NetFlow on N5K-1 to send the data to the monitor server

**Answer:** A

#### NEW QUESTION 375

An engineer must integrate Cisco ACI with a VMware vSphere environment. The requirement is to use a VMware Distributed Virtual Switch and to assign the encapsulation VLAN of the EPG from the VLAN pool. Which configuration set accomplishes this goal?

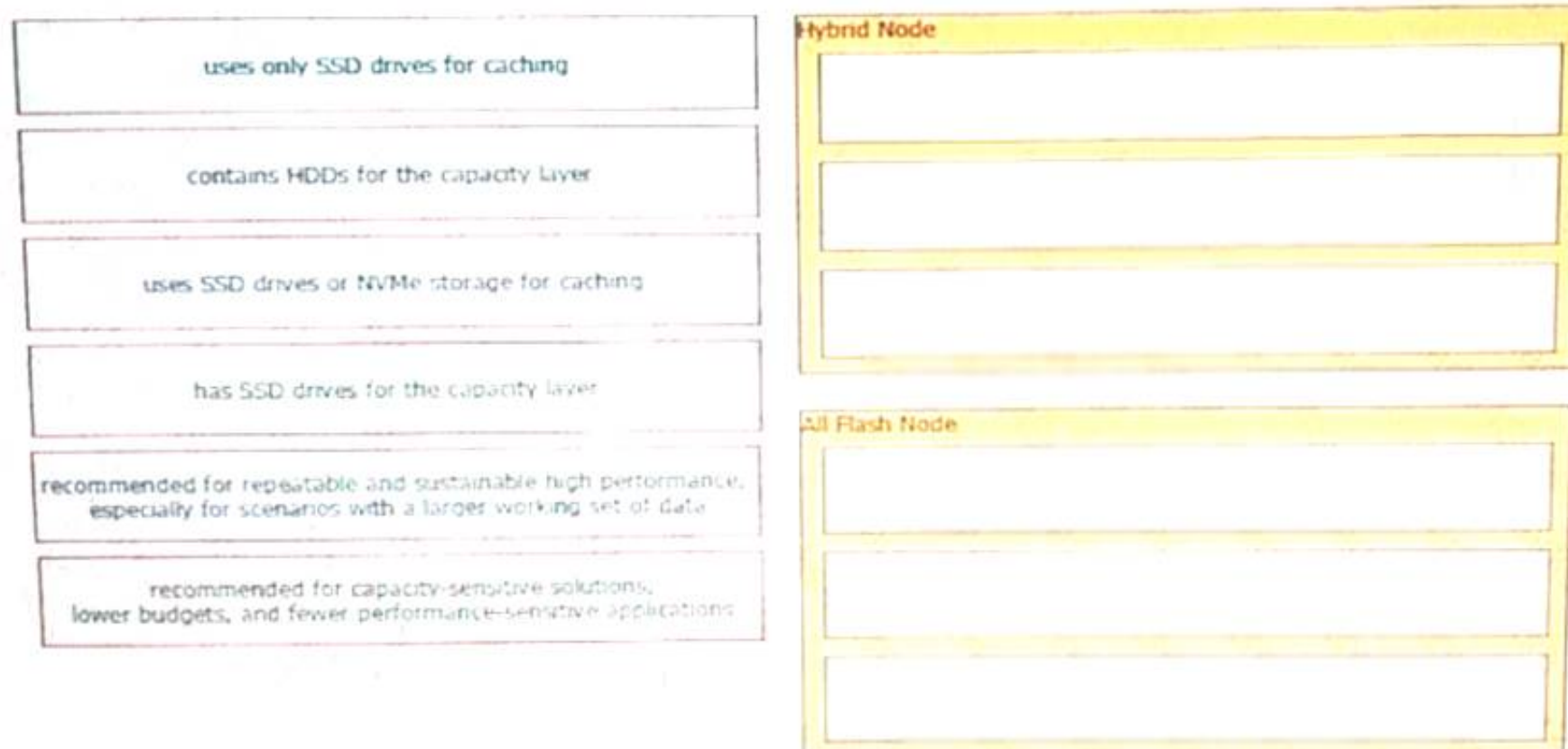
- A. Create a VMM domain association under the EPGs. Create a VLAN pool with static allocated VLANs.
- B. Create a physical domain association under the EPGs. Create a VLAN pool with static allocated VLANs.
- C. Create a physical domain association under the EPG.
- D. Create a VLAN pool with oVnarmc allocated VLANs.
- E. Create a VMM domain association under the EPGs. Create a VLAN pool with dynamic allocated VLANs.

**Answer:** D

#### NEW QUESTION 379

Drag and drop the hyperflex characteristics from the left onto the appropriate. HyperFlex Node types on the right. Not all options are used.

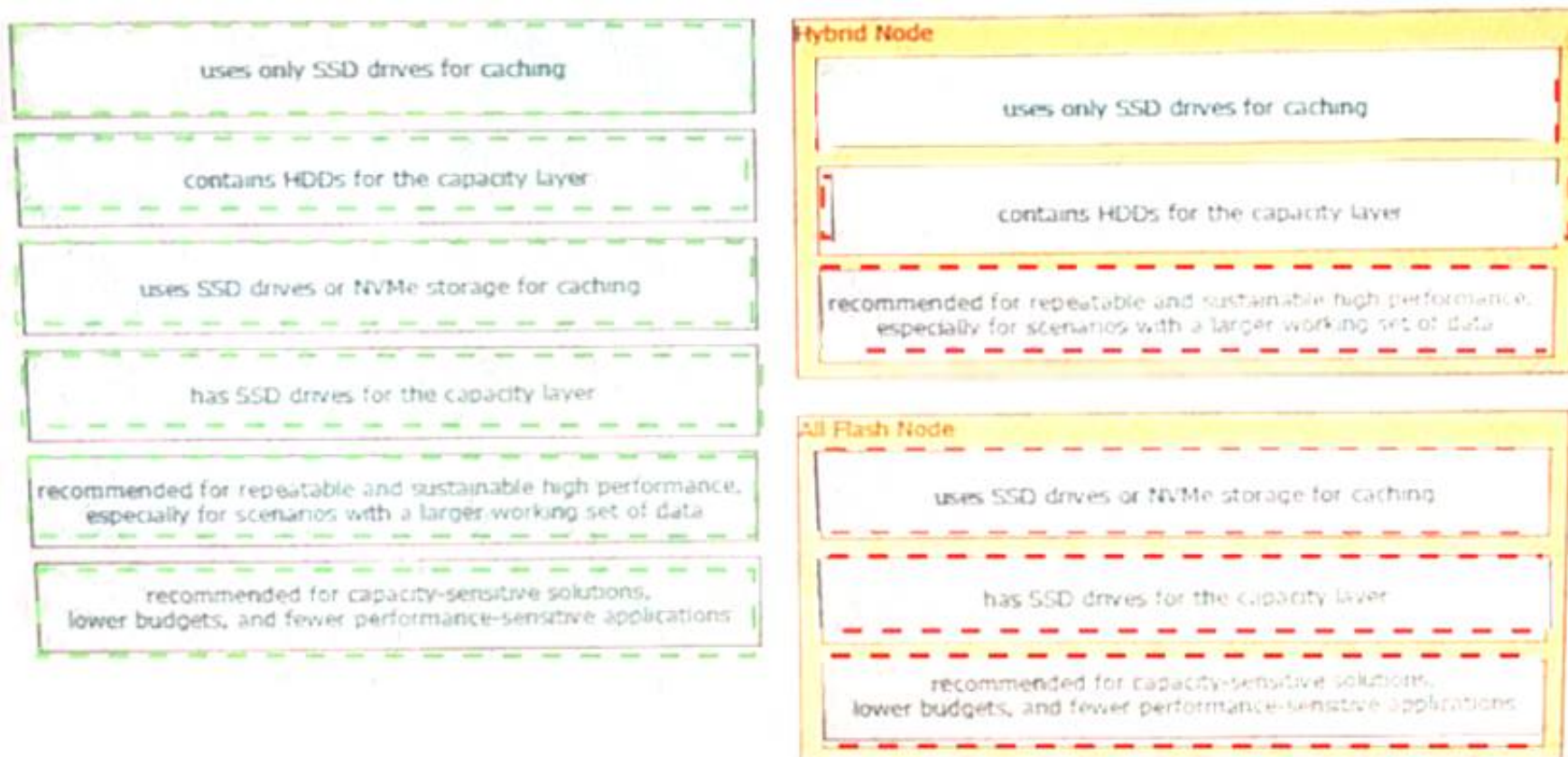




- A. Mastered
- B. Not Mastered

Answer: A

Explanation:



#### NEW QUESTION 381

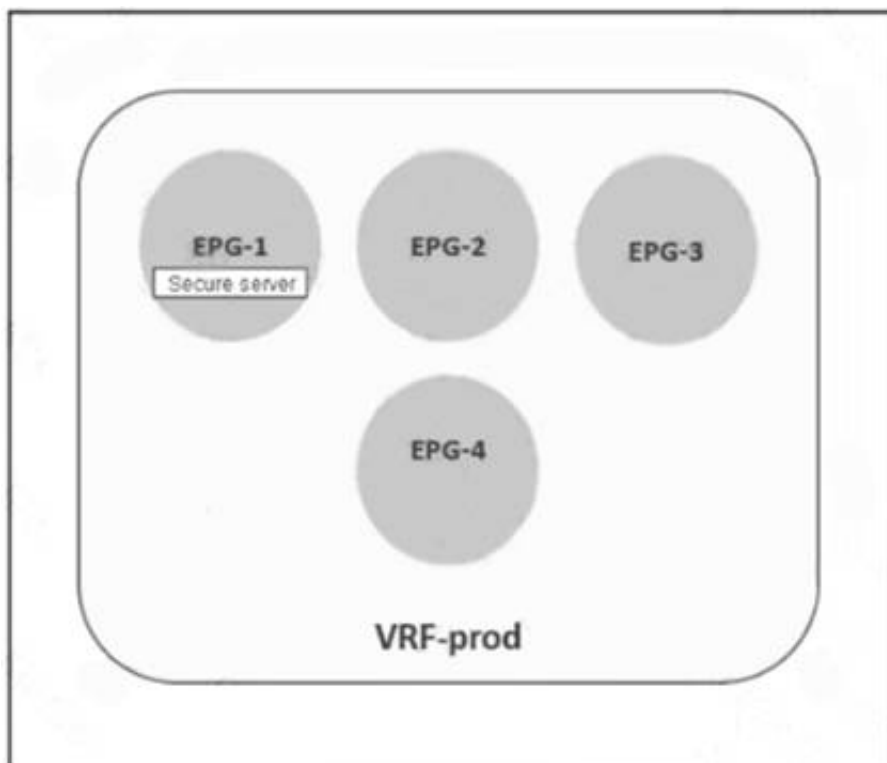
An engineer is implementing traffic monitoring for a server vNIC that is configured with fabric failover enabled. The requirement is for the traffic to be sent to an analyzer, even during a failure of one of the fabric interconnects. The analyzer is connected to unconfigured Ethernet ports on both fabric interconnects. Which configuration accomplishes this task?

- A. Create two traffic monitoring session with different names, one per fabric Connect the analyzer connected to FI-BI the destination for both monitoring sessions.
- B. Create two traffic monitoring session with different names, one per fabric.
- C. Connect an analyser on each FI as the destination for the monitoring session local to the FI.
- D. Create two traffic monitoring sessions with the same name, one per fabric Connect the analyze connected to FI-A as the destination for both monitoring sessions

Answer: A

#### NEW QUESTION 382

Refer to the exhibit.



A secure server that provides services to EPG-2 must be placed in EPG-1. The remaining EPGs—EPG-2, EPG-3, and EPG-4—must communicate without any contracts. Which set of actions accomplishes this goal?

- ☒ Exclude EPG-2, EPG-3, and EPG-4 from the preferred group. Configure a contract between EPG-2 and EPG-3.
- ☐ Include EPG-2, EPG-3, and EPG-4 in the preferred group. Configure a contract between EPG-1 and EPG-2.
- ☐ Include EPG-1 and EPG-2 in the preferred group. Configure a contract between EPG-2 and EPG-3.
- ☐ Exclude EPG-2, EPG-3, and EPG-4 from the preferred group. Configure a contract between EPG-1 and EPG-3.

- A. Option A
- B. Option B
- C. Option C
- D. Option D

**Answer: B**

#### NEW QUESTION 385

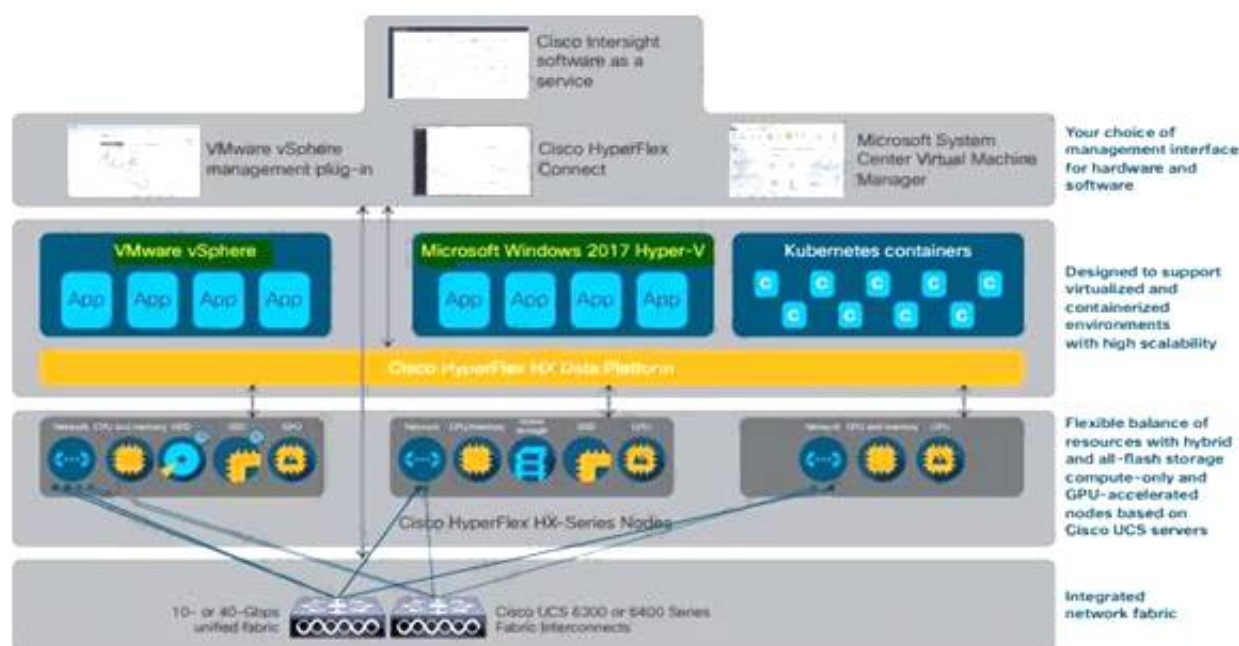
Which two hypervisors does Cisco HyperFlex support? (Choose two.)

- A. VMware vSphere
- B. Microsoft Hyper-V
- C. OpenStack
- D. Citrix XenServer
- E. RedHat KVM

**Answer: AB**

**Explanation:**

The Cisco HyperFlex platform is faster to deploy, simpler to manage, easier to scale, and ready to provide a unified pool of resources to power your business applications. You harness these resources with your choice of centralized management tools: Cisco Intersight™ software as a service, Cisco HyperFlex Connect, Microsoft System Center Virtual Machine Manager,



<https://www.cisco.com/c/dam/en/us/products/collateral/hyperconverged-infrastructure/hyperflex-hx-series/solution-overview-c22-736815.pdf>

**NEW QUESTION 388**

Refer to the exhibit.

```
N7K-1
interface Vlan165
  no shutdown
  no ip redirects
  ip address 10.16.165.2/27
  no ipv6 redirects
  hsrp version 2
  hsrp 165
    preempt
    priority 150
    ip 10.16.165.1

vpc domain 100
  role priority 100
  peer-keepalive destination 10.1.1.2 source 10.1.1.1
vrf default
  delay restore 60
  peer-gateway
  auto-recovery
  ip arp synchronize

N7K-2
interface Vlan165
  no shutdown
  no ip redirects
  ip address 10.16.165.3/27
  no ipv6 redirects
  hsrp version 2
  hsrp 165
    priority 50
    ip 10.16.165.1

vpc domain 100
  role priority 200
  peer-keepalive destination 10.1.1.1 source 10.1.1.2
vrf default
  delay restore 60
  peer-gateway
  auto-recovery
  ip arp synchronize
```

Which statement describes the default gateway configuration of the vPC?

- A. N7K-1 acts as the default gateway for all traffic.
- B. N7K-2 forwards traffic that is destined for the default gateway by using the peer link.
- C. N7K-2 acts as the default gateway for all traffic.
- D. Either switch can act as the active default gateway.

**Answer:** D

**Explanation:**

<https://community.cisco.com/t5/networking-documents/peer-gateway-feature-on-the-nexus-7000/ta-p/3113290>

**NEW QUESTION 390**

An engineer performs a set of configuration changes for the vPC domain using Session Manager. Which two commands are used to verify the configuration and apply the device changes when no errors are returned?

(Choose two)

- A. write
- B. verify
- C. commit
- D. checkpoint
- E. apply

**Answer:** BC

**Explanation:**

[https://www.cisco.com/c/en/us/td/docs/switches/datacenter/nexus9000/sw/6-x/system\\_management/configuration](https://www.cisco.com/c/en/us/td/docs/switches/datacenter/nexus9000/sw/6-x/system_management/configuration)



## Verifying a Session

Use the following command in session mode to verify a session:

Command	Purpose
<b>verify</b> [verbose] Example: switch(config-s)# verify	Verifies the configuration as a whole, based on the existing hardware and software configuration and resources. Cisco NX-OS returns an error if the configuration does not pass this verification.

## Committing a Session

Use the following command in session mode to commit a session:

Command	Purpose
<b>commit</b> [verbose] Example: switch(config-s)# commit	Validates the configuration changes made in the current session and applies valid changes to the device. If the validation fails, Cisco NX-OS reverts to the original configuration.

<https://www.cisco.com/c/en/us/td/docs/switches/datacenter/nexus5000/sw/configuration/guide/cli/CLIconfigura>

### NEW QUESTION 393

A company provides applications and database hosting services to multiple customers using isolated infrastructure-as-a-service services within the same data center environment. The environment is based on Cisco MDS 9000 Series Switches. The requirement is to manage the environment by using Fibre Channel Security Protocol and to enable user authentication when the centralized AAA server is unreachable All communication between the MDS switches and the remote servers must be encrypted. Which command set must be used to meet these requirements?

- ☒ **aaa group server radius RadiusServer1**  
**aaa authentication login default RadiusServer1**
- ☐ **aaa group server radius RadiusServer1**  
**aaa authentication dhchap default group RadiusServer1**
- ☐ **aaa group server tacacs+ TacacsServer1**  
**aaa authentication dhchap default group TacacsServer1**
- ☐ **aaa group server tacacs+ TacacsServer1**  
**aaa authentication login console TacacsServer1**

- A. Option A
- B. Option B
- C. Option C
- D. Option D

**Answer: B**

### NEW QUESTION 397

A DevOps engineer must implement a bash script to query a REST API and return the available methods. Which code snippet completes the script?

```
curl -i -X --missing code-- http://api.cisco.com:8080/api -u admin:xT41M5P3X425VOE71NB5D
```

- A. DELETE
- B. TRACE
- C. POST
- D. OPTIONS

**Answer: C**

### NEW QUESTION 401

Due to a domain name change at a customer site, a Cisco UCS cluster must be renamed. An engineer must recommend a solution to ensure that the Cisco UCS Manager is available over HTTPS. Which action accomplishes this goal?

- A. Reinstall the cluster to generate the default key ring certificate
- B. Generate a new default key ring certificate from the Cisco UCS Manager

- C. Reboot the SSO component of the Cisco UCS Manager
- D. Regenerate the default key ring certificate manually

**Answer:** D

**Explanation:**

[https://www.cisco.com/c/en/us/td/docs/unified\\_computing/ucs/ucs-manager/GUI-User-Guides/Admin-Managem](https://www.cisco.com/c/en/us/td/docs/unified_computing/ucs/ucs-manager/GUI-User-Guides/Admin-Managem)

The default key ring certificate must be manually regenerated if the cluster name changes or the certificate expires.

**NEW QUESTION 403**

An engineer must configure the order in which the server attempts to boot from available boot device types using Cisco Integrated Management Controller (Cisco IMC). The engineer must change the boot order configuration during the setup and apply the new requirements multiple times. The requirement is to change the Cisco IMC actual boot order so it is different from the configured boot order. Which setting accomplishes this goal?

- A. Enable the system to boot with the configured boot order.
- B. Set the boot configuration directly through BIOS.
- C. Configure the legacy and precision boot order to be mutually exclusive.
- D. Apply UEFI Secure Boot for a nonsupported operating system.

**Answer:** A

**Explanation:**

[https://www.cisco.com/en/US/docs/unified\\_computing/ucs/c/sw/gui/config/guide/1.5/b\\_Cisco\\_UCS\\_C-series\\_G](https://www.cisco.com/en/US/docs/unified_computing/ucs/c/sw/gui/config/guide/1.5/b_Cisco_UCS_C-series_G)

**NEW QUESTION 405**

Refer to the exhibit.

```
import time
import cli

date= time.strftime('%Y%m%d')
file=
cli.execute ('copy running-config ftp://10.183.249.182/FusionSW/' + file)
exit()
```

Which command needs to be added to the line starting with the "file" keyword to have the generated running-config file with the name 'fusion-config\_' and current date?

- A. string(Cfusion-config\_) + date)
- B. ('fusion-configj) + date
- C. str.ffusion-configj) + date
- D. (\*fusion-config\_ \* date')

**Answer:** B

**NEW QUESTION 406**

An engineer is deploying a VXLAN EVPN environment for a customer. The customers environment suffers from a large amount of flooding related to hosts attempting to resolve the MAC to IP mapping on the network segment. Which feature prevents this issue from happening in the future?

- A. anycast rendezvous point
- B. anycast gateway
- C. IP ARP SYNC
- D. IP ARP suppression

**Answer:** D

**NEW QUESTION 410**

An engineer wants to create a backup of Cisco UCS Manager for disaster recovery purposes. What are two characteristics of a full state backup of a Cisco UCS Manager database? (Choose two.)

- A. performs a complete binary dump of the database as a .txz file
- B. contains all of the configurations
- C. performs a complete binary dump of the database as a bin file
- D. performs a complete binary dump of the databases as a sql file
- E. contains all of the runtime states and statuses but not the configurations

**Answer:** AB

**Explanation:**

File: compressed file in .tar.gz format

<https://www.virtual-odyssey.com/2019/10/31/its-the-little-stuff-cisco-ucs-backups/> the file extension for bin in a cisco context is usually the OS.

tar files are used for backup. <https://peazip.github.io/tar-file-format.html>

**NEW QUESTION 411**

Refer to the exhibit.

```
switch# show radius-server
Global RADIUS shared secret:*****
retransmission count:5
timeout value:10
following RADIUS servers are configured:
  myradius.cisco.users.com:
    available for authentication on port:1812
    available for accounting on port:1813
  172.22.91.37:
    available for authentication on port:1812
    available for accounting on port:1813
    RADIUS shared secret:*****
  10.10.0.0:
    available for authentication on port:1812
    available for accounting on port:1813
    RADIUS shared secret:*****

switch# show radius-server groups
total number of groups:4
following RADIUS server groups are configured:
  group radius:
    server: all configured radius servers
  group Group1:
    server: Server3 on auth-port 1812, acct-port 1813
    server: Server5 on auth-port 1812, acct-port 1813
  group Group5:
```

A network engineer requires remote access via SSH to a Cisco MDS 9000 Series Switch. The solution must support secure access using the local user database when the RADIUS servers are unreachable from the switches. Which command meets these requirements?

- A. aaa authentication none
- B. aaa authentication login default group radius
- C. aaa authentication login default group local
- D. aaa authentication login default fallback error local

**Answer: D**

**Explanation:**

[https://www.cisco.com/c/en/us/td/docs/switches/datacenter/mds9000/sw/6\\_2/configuration/guides/security/nx-o](https://www.cisco.com/c/en/us/td/docs/switches/datacenter/mds9000/sw/6_2/configuration/guides/security/nx-o)

**Configuring Fallback Mechanism for Authentication**

You can enable/disable fallback to local database in case the remote authentication is set and all AAA servers are unreachable (authentication error). The fallback is set to local by default in case of an authentication error. You can disable this fallback for both console and ssh/telnet login. Disabling this fallback will tighten the security of authentication.

The following steps explain the fallback mechanism for authentication:

- Step 1** By default fallback will be enabled for both default/console login. The “sh run aaa all” command can be used to verify this.
  - Step 2** Disabling fallback will print a warning message.
- The CLI syntax and behavior is as follows:

	Command	Purpose
Step 1	switch# <b>config t</b> switch(config)#	Enters configuration mode.
Step 2	switch(config)# show run aaa all aaa authentication login default fallback error local aaa authentication login console fallback error local	Displays the default fallback behavior.
Step 3	switch(config)# <b>no aaa authentication login default fallback error local</b> WARNING!!! Disabling fallback can lock your switch.	Disables the fallback to local database for authentication. <b>Note</b> Replace default with console in this command to disable fallback to console.

**NEW QUESTION 415**

A network architect is asked to design and manage geographically distributed data centers across cities and decides to use a Multi-Site Orchestrator deployment. How many orchestrators should be deployed?

- A. 3
- B. 5
- C. 4



D. 2

**Answer:** A

**Explanation:**

<https://www.cisco.com/c/en/us/solutions/collateral/data-center-virtualization/application-centricinfrastructure/w>

#### NEW QUESTION 419

Which file service protocol allows the files to appear locally mapped to the client and provides view, store, and update capabilities on a remote Linux-based storage repository that also serves as a distributed file system standard for NAS?

- A. NFS
- B. FTP
- C. iSCSI
- D. IFS

**Answer:** D

#### NEW QUESTION 422

An engineer must design an automation solution for the Cisco ACI Fabric to speed up the deployment of logical network elements for tenant provisioning. When creating a solution, the engineer must keep in mind that the tool must support these requirements:

- Allow the rapid creation and removal of logical containers.
- Support the creation of custom modules and data structures.
- Be extensible with external libraries and modules.
- Allow rapid testing of code using an on-demand execution environment.

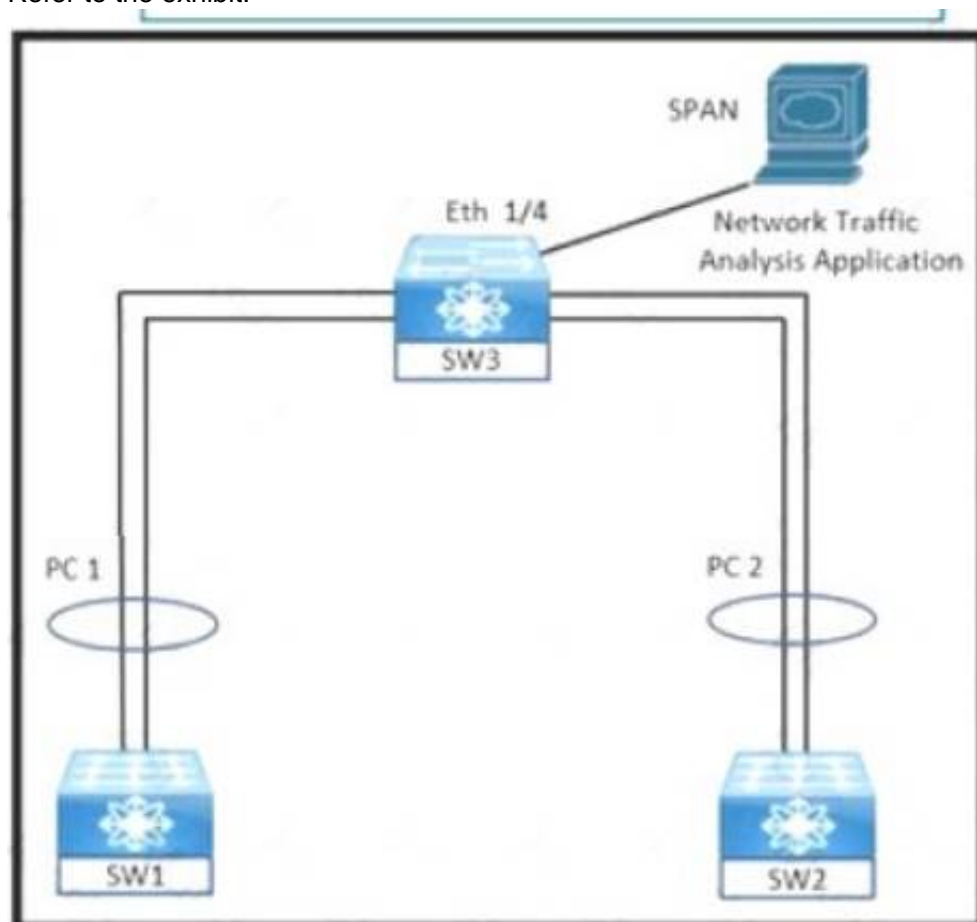
Which automation tool meets these requirements?

- A. YAML
- B. Chef
- C. SaltStack
- D. Python

**Answer:** B

#### NEW QUESTION 423

Refer to the exhibit.



An engineer must monitor ingress traffic from SW1 and SW2 port-channel interfaces from SW3. Which configuration must be implemented to accomplish this goal?

A)

```
SW3# configure terminal
SW3(config)# source interface port-channel 1 rx
SW3(config)# source interface port-channel 2 tx

SW3(config)# interface ethernet 1/4
SW3(config-if)# destination interface ethernet 1/4
SW3(config-if)# exit

SW3(config)# interface Port-channel 1-2
SW3(config-if)# switchport monitor
SW3(config-if)# exit
```

B)

```
SW3# configure terminal
SW3(config)# monitor session 2
SW3(config-monitor)# source interface port-channel 1 tx
SW3(config-monitor)# source interface port-channel 2 tx

SW3(config)# interface Port-channel 1
SW3(config-if)# switchport monitor
SW3(config-if)# exit

SW3(config)# interface Port-channel 2
SW3(config-if)# switchport monitor
SW3(config-if)# exit
```

C)

```
SW3# configure terminal
SW3(config)# monitor session 2
SW3(config-monitor)# source interface port-channel 1 tx
SW3(config-monitor)# source interface port-channel 2 rx

SW3(config)# interface port-channel 1
SW3(config-if)# switchport monitor
SW3(config-if)# exit

SW3(config)# interface port-channel 2
SW3(config-if)# switchport monitor
SW3(config-if)# exit
```

D)

```
SW3# configure terminal
SW3(config)# monitor session 2
SW3(config-monitor)# source interface port-channel 1 rx
SW3(config-monitor)# source interface port-channel 2 rx

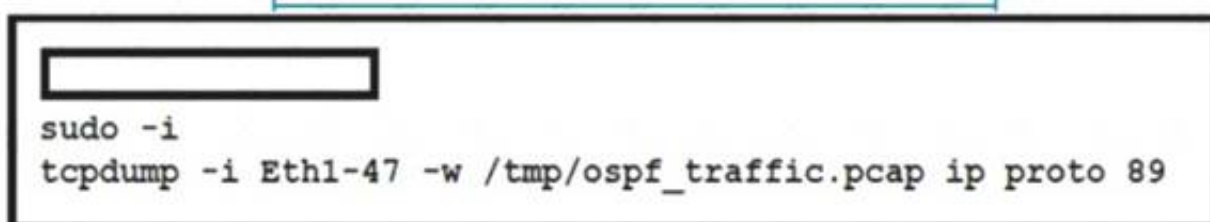
SW3(config)# interface ethernet 1/4
SW3(config-if)# switchport monitor
SW3(config-if)# exit

SW3(config)# monitor session 2
SW3(config-monitor)# destination interface ethernet 1/4
```

- A. Option A
- B. Option B
- C. Option C
- D. Option D

**Answer: D****NEW QUESTION 424**

Refer to the exhibit.



```
sudo -i
tcpdump -i Eth1-47 -w /tmp/ospf_traffic.pcap ip proto 89
```

A network engineer is using tcpdump to capture a snapshot of OSPF-related traffic on a specific Cisco NX-OS switch port. For security reasons, the capture must be taken using an embedded container that is already deployed on the Cisco Nexus device. Which command completes the script?

- A. guestshell
- B. guestshell-bash
- C. run guestshell
- D. run bash

**Answer: A****NEW QUESTION 427**

.....

## Thank You for Trying Our Product

\* 100% Pass or Money Back

All our products come with a 90-day Money Back Guarantee.

\* One year free update

You can enjoy free update one year. 24x7 online support.

\* Trusted by Millions

We currently serve more than 30,000,000 customers.

\* Shop Securely

All transactions are protected by VeriSign!

**100% Pass Your 350-601 Exam with Our Prep Materials Via below:**

<https://www.certleader.com/350-601-dumps.html>