



**Microsoft**

## **Exam Questions SC-400**

Microsoft Information Protection Administrator

### NEW QUESTION 1

- (Topic 1)

You have a Microsoft 365 subscription.

You create and run a content search from the Microsoft Purview compliance portal. You need to download the results of the content search.

What should you obtain first?

- A. a certificate
- B. a password
- C. a pin
- D. an export key

**Answer:** D

### NEW QUESTION 2

HOTSPOT - (Topic 1)

You plan to create a custom sensitive information type that will use Exact Data Match (EDM).

You need to identify what to upload to Microsoft 365, and which tool to use for the upload. What should you identify? To answer, select the appropriate options in the answer area. NOTE: Each correct selection is worth one point.

**Answer Area**

Upload:	<input type="checkbox"/> Data hashes <input checked="" type="checkbox"/> Data in the XML format <input type="checkbox"/> Digitally signed data
Use:	<input checked="" type="checkbox"/> Azure Storage Explorer <input checked="" type="checkbox"/> EDM upload agent <input type="checkbox"/> The Microsoft 365 compliance center <input type="checkbox"/> The Set-DlpKeywordDictionary cmdlet

- A. Mastered
- B. Not Mastered

**Answer:** A

**Explanation:**

**Answer Area**

Upload:	<input checked="" type="checkbox"/> Data hashes <input checked="" type="checkbox"/> Data in the XML format <input type="checkbox"/> Digitally signed data
Use:	<input checked="" type="checkbox"/> Azure Storage Explorer <input checked="" type="checkbox"/> EDM upload agent <input type="checkbox"/> The Microsoft 365 compliance center <input type="checkbox"/> The Set-DlpKeywordDictionary cmdlet

### NEW QUESTION 3

- (Topic 1)

You need to protect documents that contain credit card numbers from being opened by users outside your company. The solution must ensure that users at your company can open the documents.

What should you use?

- A. a sensitivity label policy
- B. a sensitivity label
- C. a retention policy
- D. a data loss prevention (DLP) policy

**Answer:** D

**Explanation:**

Reference:

<https://docs.microsoft.com/en-us/microsoft-365/compliance/dlp-learn-about-dlp?view=o365-worldwide>

### NEW QUESTION 4

- (Topic 1)

You are implementing a data classification solution.

The research department at your company requires that documents containing programming code be labeled as Confidential. The department provides samples of the code from its document library.

The solution must minimize administrative effort. What should you do?

- A. Create a custom classifier.
- B. Create a sensitive info type that uses Exact Data Match (EDM).
- C. Use the source code classifier.
- D. Create a sensitive info type that uses a regular expression.

**Answer:** C

**Explanation:**

Reference:

<https://docs.microsoft.com/en-us/microsoft-365/compliance/classifier-learn-about?view=o365-worldwide>

NEW QUESTION 5

- (Topic 1)

A user reports that she can no longer access a Microsoft Excel file named Northwind Customer Data.xlsx. From the Cloud App Security portal, you discover the alert shown in the exhibit.

Alerts > **File containing PCI detected in the clou...** 11/21/20 1:10 PM +30 MEDIUM SEVERITY

File containing PCI detected in the cloud (built-in DLP engine) Microsoft SharePoint Online Megan Bowen Northwind Customer Data.xlsx

Resolution options: Northwind Customer Data.xlsx File is in quarantine Megan Bowen Close alert

**Description**  
File policy "File containing PCI detected in the cloud (built-in DLP engine)" was matched by "Northwind Customer Data.xlsx"

**Important information**  
• This alert falls under the following MITRE tactic: Execution

**Files**  
No files found

File name	Owner	App	Collaborators	Policies	Last modified
No files found					

**File policy report**  
File Quarantined History

1 - 1 of 1 files

File name	Owner	App	Collaborators	Policies	Last modified
Northwind Custo...	Megan Bowen	Microsoft Share...	5 collaborators	1 policy match	Nov 21, 2020

You restore the file from quarantine.

You need to prevent files that match the policy from being quarantined. Files that match the policy must generate an alert. What should you do?

- A. Modify the policy template.
- B. Assign the Global reader role to the file owners.
- C. Exclude file matching by using a regular expression.
- D. Update the governance action.

Answer: D

Explanation:

Reference:

<https://docs.microsoft.com/en-us/cloud-app-security/data-protection-policies#create-a-new-file-policy>

NEW QUESTION 6

HOTSPOT - (Topic 1)

You have a Microsoft 365 tenant that uses a domain named canstoso.com.

A user named User1 leaves your company. The mailbox of User1 is placed on Litigation Hold, and then the account of User1 is deleted from Azure Active Directory (Azure AD).

You need to copy the content of the User1 mailbox to a folder in the existing mailbox of another user named User2.

How should you complete the PowerShell command? To answer, select the appropriate options in the answer area.

NOTE: Each correct selection is worth one point.

Answer Area

```
$InactiveMailbox = Get-Mailbox -InactiveMailboxOnly -Identity <distinguished name>
```

New-Mailbox	-InactiveMailbox	\$InactiveMailbox.DistinguishedName
New-MailboxRestoreRequest	-LitigationHoldEnabled	TargetRootFolder: "User1 Mailbox"
Restore-RecoverableItems	-RetentionHoldEnabled	
Set-Mailbox	-SourceMailbox	

- A. Mastered
- B. Not Mastered

Answer: A

Explanation:

<https://docs.microsoft.com/en-us/microsoft-365/compliance/restore-an-inactive-mailbox?view=o365-worldwide>

NEW QUESTION 7

- (Topic 1)

You create a label that encrypts email data.

Users report that they cannot use the label in Outlook on the web to protect the email messages they send.

You need to ensure that the users can use the new label to protect their email. What should you do?

- A. Wait six hours and ask the users to try again.
- B. Create a label policy.
- C. Create a new sensitive information type.
- D. Modify the priority order of label policies

Answer: D

### NEW QUESTION 8

- (Topic 1)

You have a Microsoft 365 E5 subscription that contains a data loss prevention (DLP) policy named DLP1. DLP1 contains the DLP rules shown in the table.

Name	Priority	User notifications	Policy tip	If there's a match for this rule, stop processing additional DLP policies and rules
Rule1	0	On	Tip 1	Enabled
Rule2	1	On	Tip 2	Enabled
Rule3	2	On	Tip 3	Disabled
Rule4	3	On	Tip 4	Enabled

You need to ensure that when a document matches all the rules, users will see Tip 2. What should you change?

- A. the priority setting of Rule2 to 0
- B. the priority setting of Rule2 to 2
- C. the priority setting of Rule3 and Rule4 to 0
- D. the If there's a match for this rule, stop processing additional DLP policies and rules setting for Rule3 to Enabled

**Answer:** A

### NEW QUESTION 9

- (Topic 1)

You have a sensitive information type based on a trainable classifier. You are unsatisfied with the result of the result of trainable classifier. You need to retrain the classifier.

What should you use in the Microsoft 365 compliance center?

- A. Labels from Information protection
- B. Labels from Information governance
- C. Content explorer from Data classification
- D. Content search

**Answer:** C

#### Explanation:

Reference:

<https://docs.microsoft.com/en-us/microsoft-365/compliance/classifier-how-to-retrain-content-explorer?view=o365-worldwide>

### NEW QUESTION 10

HOTSPOT - (Topic 1)

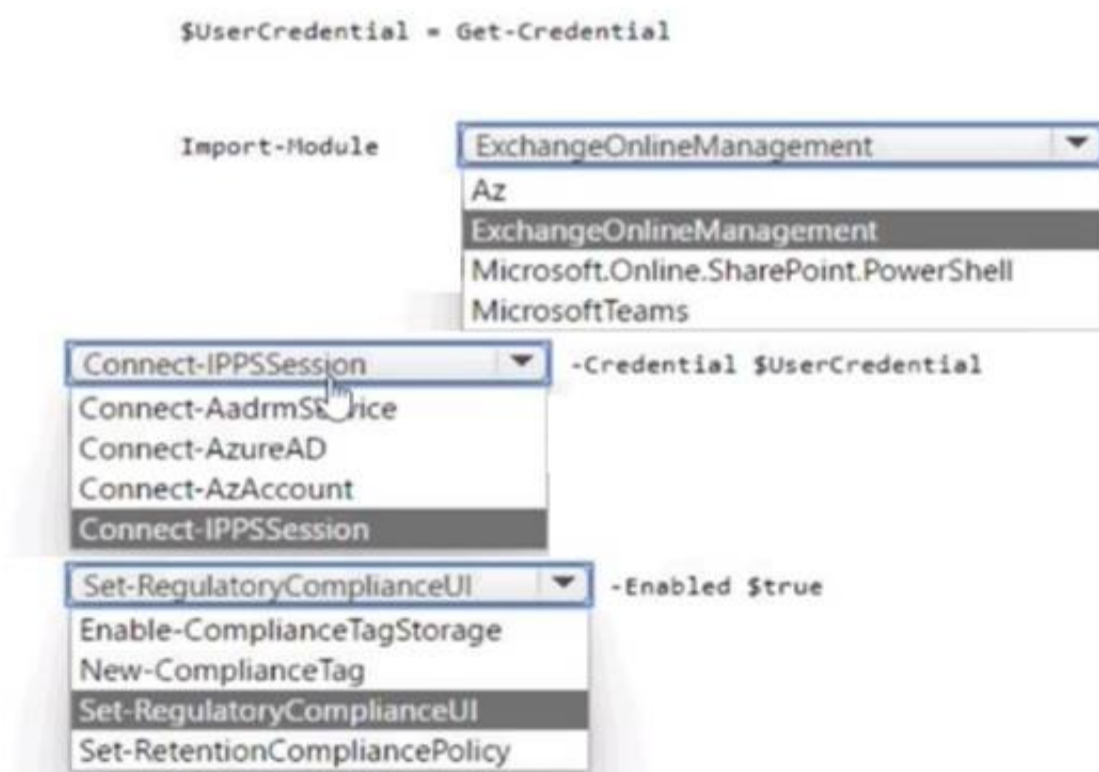
While creating a retention label, you discover that the Mark items as a regulatory record option is unavailable.

You need to ensure that the option is available when you create retention labels in the Microsoft Purview compliance portal.

How should you complete the PowerShell script? To answer, select the appropriate options in the answer area.

NOTE: Each correct selection is worth one point.

**Answer Area**

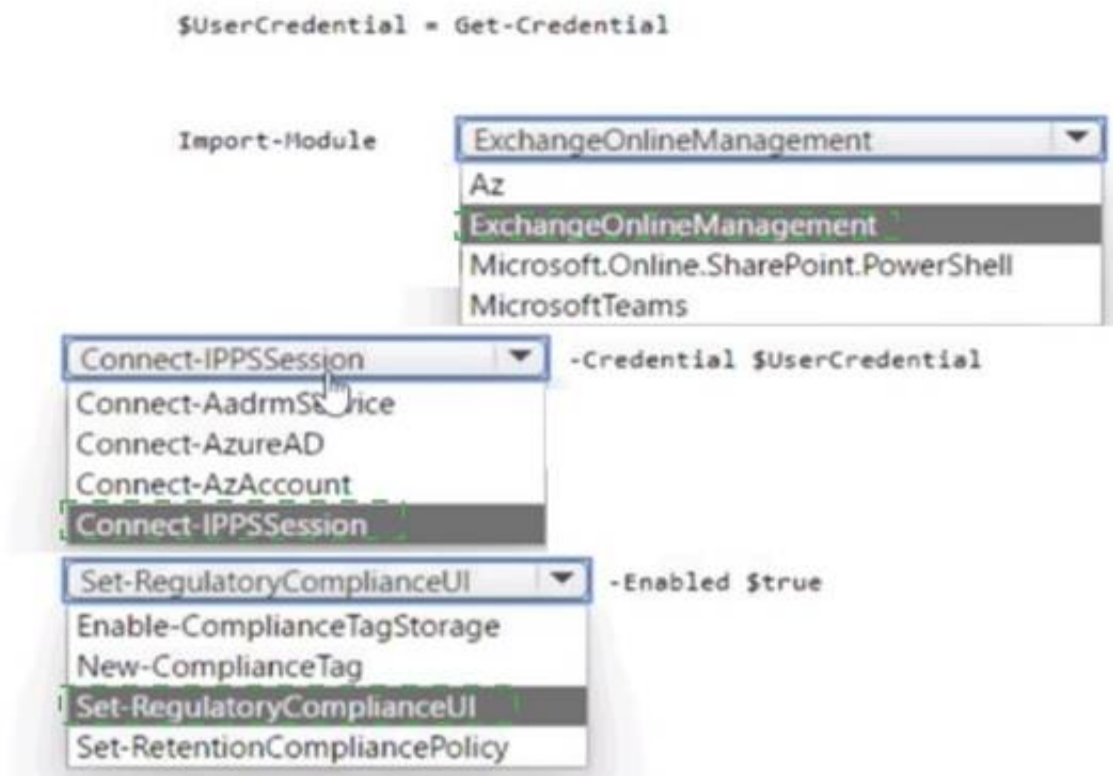


- A. Mastered
- B. Not Mastered

**Answer:** A

#### Explanation:

Answer Area



NEW QUESTION 10

HOTSPOT - (Topic 1)

You have a Microsoft SharePoint Online site named Site1 and a sensitivity label named Sensitivity1. Sensitivity1 adds a watermark and a header to content. You create a policy to automatically apply Sensitivity1 to emails in Microsoft Exchange Online and Site1. How will Sensitivity1 mark matching emails and Site1 documents? To answer, select the appropriate options in the answer area. NOTE: Each correct selection is worth one point.

Exchange Online emails:

A header only
A watermark only
A watermark and a header

Site1 documents:

A header only
A watermark only
A watermark and a header

- A. Mastered
- B. Not Mastered

Answer: A

Explanation:

Exchange Online emails:

A header only
A watermark only
A watermark and a header

Site1 documents:

A header only
A watermark only
A watermark and a header

NEW QUESTION 14

- (Topic 1)

You need to recommend a solution that meets the compliance requirements for protecting the documents in the Data shared folder. What should you recommend?

- A. From the Microsoft 365 compliance center, configure a DLP policy.
- B. From the Microsoft 365 compliance center, configure a Content Search query.

- C. From the Microsoft 365 compliance center, configure an auto-labeling policy.
- D. From Azure Information Protection, configure a content scan job.

Answer: D

Explanation:

Reference:  
<https://docs.microsoft.com/en-us/azure/information-protection/deploy-aip-scanner>

NEW QUESTION 15

HOTSPOT - (Topic 1)  
You have a Microsoft 365 E5 subscription.  
You create an adaptive scope named Scope 1 as shown in the following exhibit.

✓ Name

✓ Scope type

● Finish

## Review and finish

Name

Scope1

Edit

Description

Edit

Type

Group

Edit

Query summary

Name starts with Group

Edit

Back

Submit

Cancel

Q

You create a retention policy named Policy1 that includes Scope1.  
To which three locations can you apply Policy1? To answer, select the appropriate locations in the answer area.  
NOTE: Each correct selection is worth one point.

+ Add scopes

Add scopes to see them here

Choose locations to apply the policy

Based on the scopes you added, this policy can be applied to content in these locations.

Status	Location
<input type="checkbox"/> Off	Exchange email
<input type="checkbox"/> Off	SharePoint sites
<input type="checkbox"/> Off	OneDrive accounts
<input type="checkbox"/> Off	Microsoft 365 Groups
<input type="checkbox"/> Off	Skype for Business
<input type="checkbox"/> Off	Teams channel messages
<input type="checkbox"/> Off	Teams chats
<input type="checkbox"/> Off	Teams private channel messages
<input type="checkbox"/> Off	Yammer community messages (Preview)

- A. Mastered
- B. Not Mastered

Answer: A










Explanation:

+ Add scopes

Add scopes to see them here

Choose locations to apply the policy

Based on the scopes you added, this policy can be applied to content in these locations.

Status	Location
<input type="checkbox"/> Off	 Exchange email
<input type="checkbox"/> Off	 SharePoint sites
<input type="checkbox"/> Off	 OneDrive accounts
<input type="checkbox"/> Off	 Microsoft 365 Groups
<input type="checkbox"/> Off	 Skype for Business
<input type="checkbox"/> Off	 Teams channel messages
<input type="checkbox"/> Off	 Teams chats
<input type="checkbox"/> Off	 Teams private channel messages
<input type="checkbox"/> Off	 Yammer community messages (Preview)

#### NEW QUESTION 16

- (Topic 1)

You have a Microsoft 365 E5 tenant that has data loss prevention (DLP) policies. You need to create a report that includes the following:

- Documents that have a matched DLP policy.
- Documents that have had a sensitivity label changed.
- Documents that have had a sensitivity label removed. What should you use?

- A. an eDiscovery case  
B. communication compliance reports  
C. a content search  
D. Activity explorer

**Answer:** C

#### NEW QUESTION 18

- (Topic 1)

You have a Microsoft 365 tenant that uses Microsoft Teams.

You need to ensure that all internal communication is stored for a minimum of seven years. What should you create first?

- A. a retention label  
B. a Microsoft SharePoint Online site  
C. a Microsoft Exchange Online shared mailbox  
D. a retention label policy

**Answer:** A

#### Explanation:

Reference:

<https://docs.microsoft.com/en-us/microsoft-365/compliance/retention?view=o365-worldwide>

#### NEW QUESTION 22

HOTSPOT - (Topic 1)

You need to recommend an information governance solution that meets the HR requirements for handling employment applications and resumes.

What is the minimum number of information governance solution components that you should create? To answer, select the appropriate options in the answer area.

NOTE: Each correct selection is worth one point.

Minimum number of retention labels:

	▼
1	
2	
3	
4	

Minimum number of auto-labeling policies:

	▼
1	
2	
3	
4	

- A. Mastered
- B. Not Mastered

Answer: A

Explanation:

Minimum number of retention labels:

	▼
1	
2	
3	
4	

Minimum number of auto-labeling policies:

	▼
1	
2	
3	
4	

NEW QUESTION 24

- (Topic 1)  
You have a Microsoft 365 E5 tenant that contains a user named User1.  
You need to identify the type and number of holds placed on the mailbox of User1. What should you do first?

- A. From the Microsoft 365 compliance center, create an eDiscovery case.
- B. From Exchange Online PowerShell
- C. run the Gee-Mailbox cmdlet.
- D. From the Microsoft 365 compliance center, run a content search.
- E. From Exchange Online PowerShell
- F. run the Get-HoldCompliancePolicy cmdlet.

Answer: B

Explanation:

Reference:  
<https://docs.microsoft.com/en-us/microsoft-365/compliance/identify-a-hold-on-an-exchange-online-mailbox?view=o365-worldwide>

NEW QUESTION 29

HOTSPOT - (Topic 1)  
You have a Microsoft 365 ES subscription.  
You plan to create a custom trainable classifier by uploading 1,000 machine-generated files as seed content.  
The files have sequential names and are uploaded in one-minute intervals as shown in the following table.

Number	Name	Upload time
1	File001.docx	3:01 AM
2	File002.docx	3:02 AM
3	File003.docx	3:03 AM
994 rows not shown		
998	File998.docx	7:38 PM
999	File999.docx	7:39 PM
1000	File000.docx	7:40 PM

Which files were processed first and last when you created the custom trainable classifier? To answer, select the appropriate options in the answer area.  
NOTE: Each correct selection is worth one point.

Answer Area

First: 

File001.docx

File001.docx

File301.docx

File501.docx

File801.docx

File951.docx

Last: 

File000.docx

File050.docx

File200.docx

File300.docx

File500.docx

File000.docx

- A. Mastered
- B. Not Mastered

Answer: A

Explanation:

Answer Area

First: 

File001.docx

File001.docx

File301.docx

File501.docx

File801.docx

File951.docx

Last: 

File000.docx

File050.docx

File200.docx

File300.docx

File500.docx

File000.docx

NEW QUESTION 33

- (Topic 1)

You receive an email that contains a list of words that will be used few a sensitive information type.  
You need to create a file that can be used as the source of a keyword dictionary. In which format should you save the list?

- A. an XLSX file that contains one word in each cell of the first row
- B. a ISV file that contains words separated by tabs
- C. a JSON file that that an element tor each word
- D. a text file that has one word on each line

Answer: D

Explanation:

Keyword dictionaries can be created either from a text file or from csv file. Note:  
There are several versions of this question in the exam. The question has two possible correct answers:  
? a CSV file that contains words separated by commas  
? a text file that has one word on each line

Other incorrect answer options you may see on the exam include the following:

- ? a TSV file that contains words separated by tabs
- ? a DOCX file that has one word on each line
- ? an XML file that contains a keyword tag for each word

Reference:  
<https://docs.microsoft.com/en-us/microsoft-365/compliance/create-a-keyword-dictionary?view=o365-worldwide>

NEW QUESTION 36

HOTSPOT - (Topic 1)  
You have a Microsoft 365 E5 tenant that contains the users shown in the following table.

Name	Role
User1	Global Administrator
User2	Compliance admin

You have a retention policy that has the following configurations:

- ? Name: Policy1
- ? Retain items for a specific period: 5 years
- ? Locations to apply the policy: Exchange email, SharePoint sites

You place a Preservation Lock on Policy1.  
For each of the following statements, select Yes if the statement is true. Otherwise, select No.  
NOTE: Each correct selection is worth one point.

Statements	Yes	No
User1 can remove Exchange email from the locations	<input type="radio"/>	<input type="radio"/>
User2 can increase the retention period to seven years	<input type="radio"/>	<input type="radio"/>
User1 can decrease the retention period to three years	<input type="radio"/>	<input type="radio"/>

- A. Mastered
- B. Not Mastered

Answer: A

Explanation:

When a retention policy is locked:

- ? No one, including the global admin, can disable the policy or delete it
- ? Locations can be added but not removed
- ? You can extend the retention period but not decrease it

NEW QUESTION 39

HOTSPOT - (Topic 1)  
At the end of a project you upload project documents to a Microsoft SharePoint Online library that contains many files. Files that have the following naming format must be labeled as Project I

- aei\_AA989.docx
- bd\_WSOgadocx
- cei\_DLF112-docx
- ebc\_QQ4S4.docx
- ecc\_BB565.docx

You plan to create an auto-apply retention label policy.  
What should you use to identify the files, and which regular expression should you use? To answer, select the appropriate options in the answer area.

Answer Area

To identify the files, use:

A sensitive info type

A retention label

A trainable classifier

Regular expression:

[a-z]{3}[ ][A-Z]{2}[\d]{3}.docx

[a-z]{3}[\d]{3}[ ][a-z]{2}[\d]{3}.docx

[a-z]{3}[ ][A-Z]{2}[\d]{3}.docx

- A. Mastered
- B. Not Mastered

Answer: A

Explanation:

Box 1 = a retention label  
Box 2 = [a-z]{3}[ ][A-Z]{2}[\d]{3}.docx

NEW QUESTION 41

- (Topic 1)  
You have a Microsoft 365 tenant that uses records management.  
You use a retention label to mark legal files stored in a Microsoft SharePoint Online document library as regulatory records.  
What can you do to the legal files?

- A. Rename the files.
- B. Edit the properties of the files.
- C. Change the retention label of the files.
- D. Copy the content of the files.

Answer: D

Explanation:

Reference:  
<https://docs.microsoft.com/en-us/microsoft-365/compliance/records-management?view=o365-worldwide>

NEW QUESTION 45

HOTSPOT - (Topic 1)  
You have a Microsoft 365 sensitivity label that is published to all the users in your Azure AD tenant as shown in the following exhibit.  
Answer Area

Statements	Yes	No
All the documents stored on each user's computer will include a watermark automatically.	<input type="radio"/>	<input type="radio"/>
If the sensitivity label is applied to a document, the document will have a header that contains the word "INTERNAL".	<input type="radio"/>	<input type="radio"/>
The sensitivity label can be applied only to documents that contain the word rebranding.	<input type="radio"/>	<input type="radio"/>

- A. Mastered
- B. Not Mastered

Answer: A

Explanation:

Answer Area

Statements	Yes	No
All the documents stored on each user's computer will include a watermark automatically.	<input type="radio"/>	<input checked="" type="radio"/>
If the sensitivity label is applied to a document, the document will have a header that contains the word "INTERNAL".	<input type="radio"/>	<input checked="" type="radio"/>
The sensitivity label can be applied only to documents that contain the word rebranding.	<input type="radio"/>	<input checked="" type="radio"/>

NEW QUESTION 50

- (Topic 1)  
You have a Microsoft 365 E5 tenant that uses a domain named contoso.com.  
A user named User1 sends link-based, branded emails that are encrypted by using Microsoft Office 365 Advanced Message Encryption to the recipients shown in the following table. For which recipients can User1 revoke the emails?

- A. Recipient4 only
- B. Recipient1 only
- C. Recipient1, Recipient2, Recipient3, and Recipient4
- D. Recipient3 and Recipient4 only
- E. Recipient1 and Recipient2 only

Answer: A

Explanation:

Reference:  
<https://docs.microsoft.com/en-us/microsoft-365/compliance/revoke-ome-encrypted-mail?view=o365-worldwide>

NEW QUESTION 51

HOTSPOT - (Topic 1)  
You have a Microsoft 365 ES subscription that uses data loss prevention (DLP) to protect sensitive information.  
You need to create scheduled reports that generate.  
\* DLP policy matches reported over the shortest frequency of time  
\* DLP incidents reported over the longest frequency of time  
Which frequency should you configure for each report? To answer, select the appropriate options in the answer area.  
NOTE: Each correct selection is worth one point.

Answer Area

DLP policy matches: 

Daily  
Daily  
Every two days  
Weekly  
Every two weeks  
Monthly

DLP incidents: 

Monthly  
Weekly  
Every two weeks  
Monthly  
Every three months  
Every six months

- A. Mastered
- B. Not Mastered

Answer: A

Explanation:

Answer Area

DLP policy matches: 

Daily  
Daily  
Every two days  
Weekly  
Every two weeks  
Monthly

DLP incidents: 

Monthly  
Weekly  
Every two weeks  
Monthly  
Every three months  
Every six months

NEW QUESTION 56

- (Topic 1)  
You have a Microsoft 365 E5 subscription.  
You need to prevent users from uploading data loss prevention (DLP)-protected documents to the following third-party websites;  
• web1.contoso.com  
• web2.contoso.com  
The solution must minimize administrative effort.  
To what should you set the Service domains setting for Endpoint DLP?

- A. contoso.com
- B. web'.contoso.com
- C. \*.contoso.com
- D. web1xontoso.com and web2.contoso.com

Answer: D

NEW QUESTION 57

- (Topic 1)  
You have a Microsoft 365 E5 subscription that contains a trainable classifier named Trainable1. You plan to create the items shown in the following table.

Name	Type
Label1	Sensitivity label
Label2	Retention label
Policy1	Retention label policy
DLP1	Data loss prevention (DLP) policy

Which items can use Trainable1?

- A. Label2 only
- B. Label1 and Label2 only
- C. Label1 and Policy1 only
- D. Label2 Policy1, and DLP1 only
- E. Label1, Label2, Policy1, and DLP1

Answer: A

#### NEW QUESTION 62

- (Topic 1)

Note: This question is part of a series of questions that present the same scenario. Each question in the series contains a unique solution that might meet the stated goals. Some question sets might have more than one correct solution, while others might not have a correct solution.

After you answer a question in this section, you will NOT be able to return to it. As a result, these questions will not appear in the review screen.

You have a Microsoft 365 tenant and 500 computers that run Windows 10. The computers are onboarded to the Microsoft 365 compliance center.

You discover that a third-party application named Tailspin\_scanner.exe accessed protected sensitive information on multiple computers. Tailspin\_scanner.exe is installed locally on the computers.

You need to block Tailspin\_scanner.exe from accessing sensitive documents without preventing the application from accessing other documents.

Solution: From the Cloud App Security portal, you create an app discovery policy. Does this meet the goal?

A. Yes

B. No

Answer: B

#### Explanation:

You can create app discovery policies to alert you when new apps are detected within your organization.

Use the unallowed apps list instead.

Reference:

<https://docs.microsoft.com/en-us/cloud-app-security/cloud-discovery-policies>

<https://docs.microsoft.com/en-us/microsoft-365/compliance/endpoint-dlp-using?view=o365-worldwide>

#### NEW QUESTION 67

- (Topic 1)

You need to recommend a solution that meets the executive requirements. What should you recommend?

A. From the Microsoft 365 compliance center, create a retention policy.

B. From the Exchange admin center, enable archive mailboxes.

C. From the Microsoft 365 compliance center, create a retention label.

D. From the Microsoft 365 compliance center, create a DLP policy.

Answer: C

#### Explanation:

Reference:

<https://docs.microsoft.com/en-us/microsoft-365/compliance/create-apply-retention-labels?view=o365-worldwide>

#### NEW QUESTION 69

- (Topic 1)

You have a Microsoft 365 tenant that uses trainable classifiers. You are creating a custom trainable classifier.

You collect 300 sample file types from various geographical locations to use as seed content. Some of the file samples are encrypted.

You organize the files into categories as shown in the following table.

Category	Type	Language	Encryption status
Category1	.docx	French	Not encrypted
Category2	.xlsx	English	Encrypted
Category3	.pptx	German	Encrypted
Category4	.docx	English	Not encrypted
Category5	.mht	English	Not encrypted
Category6	.htm	English	Not encrypted

Which file categories can be used as seed content?

A. Category4 and Category5 only

B. Category4 and Category6 only

C. Category3. and Category5 only

D. Category1 and Category3 only

Answer: C

#### Explanation:

Reference:

<https://docs.microsoft.com/en-us/microsoft-365/compliance/classifier-get-started-with?view=o365-worldwide>

<https://docs.microsoft.com/en-us/sharepoint/technical-reference/default-crawled-file-name-extensions-andparsed-file-types>

#### NEW QUESTION 72

HOTSPOT - (Topic 1)

You have a Microsoft 365 E5 subscription.

You have the alerts shown in the following exhibit

## Data loss prevention

 Remove from navigation

Overview Policies **Alerts** Endpoint DLP settings Activity explorer

[Customize columns](#)

 Export  Refresh

2 items  Customize columns

Filter  Reset  Filters

Time range: 2/9/2022-2/9/2022

User: Any

Alert status: Any

Alert severity: Any

Alert name	Severity	Status
DLP policy match for document 'File2.docx' in SharePoint	 Low	Resolved
DLP policy match for document 'File1.docx' in SharePoint	 Low	Active

### Answer Area

The alert status for File1.docx can be changed to [answer choice].

- Dismissed only
- Investigating only
- Resolved only
- Investigating and Dismissed only
- Investigating, Dismissed, and Resolved

The alert status for File2.docx can be changed to [answer choice].

- Active only
- Investigating only
- Investigating and Dismissed
- Active, Investigating, and Dismissed

- A. Mastered
- B. Not Mastered

Answer: A

### Explanation:

#### Answer Area

The alert status for File1.docx can be changed to [answer choice].

- Dismissed only
- Investigating only
- Resolved only
- Investigating and Dismissed only
- Investigating, Dismissed, and Resolved

The alert status for File2.docx can be changed to [answer choice].

- Active only
- Investigating only
- Investigating and Dismissed
- Active, Investigating, and Dismissed

### NEW QUESTION 77

- (Topic 1)

You have a new Microsoft 365 tenant.

You need to ensure that custom trainable classifiers can be created in the tenant. To which role should you be assigned to perform the configuration?

- A. Security administrator
- B. Security operator
- C. Global administrator
- D. Compliance administrator

Answer: D

### Explanation:

Reference:

<https://docs.microsoft.com/en-us/microsoft-365/compliance/classifier-get-started-with?view=o365-worldwide>

### NEW QUESTION 80

- (Topic 1)

Note: This question is part of a series of questions that present the same scenario. Each question in the series contains a unique solution that might meet the stated goals. Some question sets might have more than one correct solution, while others might not have a correct solution.

After you answer a question in this section, you will NOT be able to return to it. As a result, these questions will not appear in the review screen.

You have a Microsoft 365 E5 subscription.

You need to identify resumes that are stored in the subscription by using a built-in trainable classifier.

Solution: You create a data loss prevention (DLP) policy. Does this meet the goal?

- A. Yes
- B. No

Answer: B

### NEW QUESTION 83

- (Topic 1)

You need to test Microsoft Office 365 Message Encryption (OME) capabilities for your company. The test must verify the following information:

The acquired default template names

The encryption and decryption verification status Which PowerShell cmdlet should you run?

- A. Test-ClientAccessRule
- B. Test-Mailflow
- C. Test-OAuthConnectivity
- D. Test-IRMConfiguration

Answer: D

#### Explanation:

Reference:

<https://docs.microsoft.com/en-us/microsoft-365/compliance/set-up-new-message-encryption-capabilities?view=o365-worldwide>

### NEW QUESTION 84

- (Topic 1)

You are configuring a retention label named Label1 as shown in the following exhibit.

#### Define retention settings

When this label is applied to items, the content is retained and/or deleted based on the settings you choose here.

☒ **Retain items for a specific period**  
 Labeled items will be retained for the period you choose. During the retention period, Users will be able to edit items and change or remove the label. If they delete items, we'll keep copies in a secure location. [Learn more](#)

Retention period of  years  months  days

Start the retention period based on

+ Create new event type

At the end of the retention period

☒ **Delete items automatically**  
 We'll delete items from where they're currently stored.

☐ Trigger a disposition review

☐ Do nothing  
 Items will be left in place. You'll have to manually delete them if you want them gone.

☐ Retain items forever  
 Labeled items will be retained forever, even if users delete them. Users will be able to edit items and change or remove the label. If they delete items, we'll keep copies in a secure location. [Learn more](#)

☐ Only delete items when they reach a certain age  
 Labeled items won't be retained, but when they reach the age you choose, we'll delete them from where they're stored.

You need to ensure that documents that have Label1 applied are deleted three years after the end of your company's fiscal year. What should you do?

- A. Create a new event type.
- B. Select Only delete items when they reach a certain age.
- C. Modify the Retention period setting.
- D. Set At the ends of the retention period to Trigger a disposition review.

Answer: A

#### Explanation:

<https://docs.microsoft.com/en-us/microsoft-365/compliance/event-driven-retention?view=o365-worldwide>

### NEW QUESTION 86

HOTSPOT - (Topic 1)

You have a Microsoft 365 subscription that contains the users shown in the following table.

Name	Email address	Distribution group
User1	user1@contoso.com	Finance
User2	user2@contoso.com	Sales

You create the data loss prevention (DLP) policies shown in the following table.

Name	Order	Apply policy to	Conditions	Actions	Exceptions	User notifications	Additional options
Policy1	0	Exchange email for the Finance distribution group	Content shared with people outside my organization. Content contains five or more credit card numbers.	Encrypt the message by using the Encrypt email messages option.	user4@fabrikam.com	Send an incident report to the administrator.	If there's a match for this rule, stop processing additional DLP policies and rules.
Policy2	1	All locations of Exchange email	Content shared with people outside my organization. Content contains five or more credit card numbers.	Restrict access or encrypt the content in Microsoft 365 locations. Block only people outside your organization.	None	Send an incident report to the administrator.	None

For each of the following statements, select Yes if the statement is true. Otherwise, select. No.  
NOTE: Each correct selection is worth one point.

Answer Area

Statements	Yes	No
If User1 sends an email message that contains five credit card numbers to user4@fabrikam.com, the message will be encrypted.	<input type="radio"/>	<input type="radio"/>
If User1 sends an email message that contains five credit card numbers to orders@adatum.com, the message will be encrypted and delivered.	<input type="radio"/>	<input type="radio"/>
If User2 sends an email message that contains five credit card numbers to orders@adatum.com, the message will be encrypted and delivered.	<input type="radio"/>	<input type="radio"/>

- A. Mastered
- B. Not Mastered

Answer: A

Explanation:  
Answer Area

Statements	Yes	No
If User1 sends an email message that contains five credit card numbers to user4@fabrikam.com, the message will be encrypted.	<input type="radio"/>	<input checked="" type="radio"/>
If User1 sends an email message that contains five credit card numbers to orders@adatum.com, the message will be encrypted and delivered.	<input checked="" type="radio"/>	<input type="radio"/>
If User2 sends an email message that contains five credit card numbers to orders@adatum.com, the message will be encrypted and delivered.	<input type="radio"/>	<input checked="" type="radio"/>

NEW QUESTION 89

HOTSPOT - (Topic 1)

You have the retention label policy shown in the Policy exhibit. (Click the Policy tab.)

## Define retention settings

When this label is applied to items, the content is retained and/or deleted based on the settings you choose here.

### ☒ Retain items for a specific period

Labeled items will be retained for the period you choose. During the retention period, Users will be able to edit items and change or remove the label. If they delete items, we'll keep copies in a secure location. [Learn more](#)

#### Retention period

7 years

#### Start the retention period based on

Fiscal Year End

+ Create new event type

#### At the end of the retention period

### ☒ Delete items automatically

We'll delete items from where they're currently stored.

### ☐ Trigger a disposition review

### ☐ Do nothing

This option isn't available for event-based labels

### ☐ Retain items forever

Labeled items will be retained forever, even if users delete them. Users will be able to edit items and change or remove the label, if they delete items, we'll keep copies in a secure location. [Learn more](#)

### ☐ Only delete items when they reach a certain age

Labeled items won't be retained, but when they reach that age you choose, we'll delete them from where they're stored.

Back

Next

Cancel

[Need help?](#) [Give feedback](#)

Users apply the retention label policy to files and set the asset ID as shown in the following table.

File name	Creation date	Asset ID
Doc1.docx	September 1, 2020	FY20
Doc2.docx	September 20, 2020	FY20
Doc3.docx	October 15, 2020	FY21

On December 1, 2020, you create the event shown in the Event exhibit. (Click the Event tab.)

Events > New Event

✓ Name the Event

✓ Event Settings

● Review your Settings

Review your Settings

Event Name

NameFY 2020

Description

Edit

Event Settings

Event typeFiscal Year End

Event Labels

Edit

More Event Settings

Applies to Exchange items with these keywords

Applies to SharePoint/OneDrive items with these asset IDs

Event dateWed Sep 30 2020 00:00:00 GMT-0400 (Eastern-Daylight Time)

Edit

Back

Submit

Cancel

Need help? Give feedback

For each of the following statements, select Yes if the statement is true. Otherwise, select No.  
NOTE: Each correct selection is worth one point.

Statements	Yes	No
Doc1.docx will be retained until December 30, 2027.	<input type="radio"/>	<input type="radio"/>
Doc2.docx will be retained until September 30, 2027.	<input type="radio"/>	<input type="radio"/>
Doc3.docx will be retained until September 30, 2027.	<input type="radio"/>	<input type="radio"/>

- A. Mastered
- B. Not Mastered

Answer: A

Explanation:

Statements	Yes	No
Doc1.docx will be retained until December 30, 2027.	<input type="radio"/>	<input checked="" type="radio"/>
Doc2.docx will be retained until September 30, 2027.	<input checked="" type="radio"/>	<input type="radio"/>
Doc3.docx will be retained until September 30, 2027.	<input type="radio"/>	<input checked="" type="radio"/>

NEW QUESTION 93

HOTSPOT - (Topic 1)

You have a Microsoft 365 E5 tenant.

Data loss prevention (DLP) policies are applied to Exchange email, SharePoint sites, and OneDrive accounts locations.

You need to use PowerShell to retrieve a summary of the DLP rule matches from the last seven days.

Which PowerShell module and cmdlet should you use? To answer, select the appropriate options in the answer area.

NOTE: Each correct selection is worth one point.

Module:

Cmdlet:

- A. Mastered  
 B. Not Mastered

Answer: A

Explanation:

Module:

Cmdlet:

#### NEW QUESTION 98

- (Topic 1)

Note: This question is part of a series of questions that present the same scenario. Each question in the series contains a unique solution that might meet the stated goals. Some question sets might have more than one correct solution, while others might not have a correct solution.

After you answer a question in this section, you will NOT be able to return to it. As a result, these questions will not appear in the review screen.

You have a Microsoft 365 subscription.

You have a user named User1. Several users have full access to the mailbox of User1. Some email messages sent to User1 appear to have been read and deleted before the user viewed them.

When you search the audit log in the Microsoft Purview compliance portal to identify who signed in to the mailbox of User1, the results are blank.

You need to ensure that you can view future sign-ins to the mailbox of User1. Solution: You run the Set-AdminAuditLogConfig -AdminAuditLogEnabled Strue -AdminAuditLogCmdlets "Mailbox" command.

Does that meet the goal?

- A. Yes  
 B. NO

Answer: B

#### NEW QUESTION 102

- (Topic 1)

You have a Microsoft SharePoint Online site named Site1 that contains the files shown in the following table.

Name	Number of IP addresses in the file
File1	2
File2	3

You have a data loss prevention (DLP) policy named DLP1 that has the advanced DLP rules shown in the following table.

Name	Content contains	Policy tip	If match, stop processing	Priority
Rule1	1 or more IP addresses	Tip1	No	0
Rule2	3 or more IP addresses	Tip2	Yes	1
Rule3	2 or more IP addresses	Tip3	No	2

You apply DLP1 toSite1.

Which policy tips will appear for File2?

- A. Tip1 only
- B. Tip2only
- C. Tip3 only
- D. Tip1 and Tip2 only

**Answer:** D

### NEW QUESTION 103

- (Topic 1)

You have a Microsoft 365 subscription that contains a Microsoft 365 group named Group1. Group 1 contains 100 users and has dynamic user membership.

All users have Windows 10 devices and use Microsoft SharePoint Online and Exchange Online.

You create a sensitivity label named Label! and publish Label! as the default label for Group1.

You need to ensure that the users in Group! must apply Label! to their email and documents.

Which two actions should you perform? Each correct answer presents part of the solution. NOTE: Each correct selection is worth one point.

- A. From the Microsoft Purview compliance portal, modify the settings of the Label! policy.
- B. From the Azure Active Directory admin center, set Membership type for Group! to Assigned.
- C. Install the Azure Information Protection unified labeling client on the Windows 10 devices.
- D. Install the Active Directory Rights Management Services (AD RMS) client on the Windows 10 devices.
- E. From the Microsoft Purview compliance portal, create an auto-labeling policy.

**Answer:** AC

### NEW QUESTION 108

HOTSPOT - (Topic 1)

You have a Microsoft 365 E5 subscription that contains a security group named Group1 and the users shown in the following table.

Name	Role
User1	Compliance Administrator
User2	None
User3	None

You assign the Compliance Manager roles to the users as shown in the following table.

User	Role
User2	Compliance Manager Contributors
User3	Compliance Manager Administrators

You add two assessments to Compliance Manager as shown in the following exhibit.

**Compliance Manager**

Overview Improvement actions Solutions **Assessments** Assessment templates

Assessments help you implement data protection controls specified by compliance, security, privacy, and data protection standards, regulations, and laws. Assessments include actions that have been taken by Microsoft to protect your data, and they're completed when you take action to implement the controls included in the assessment. [Learn how to manage assessments](#)

+ Add assessment 3 items Search Filter Group

Applied filters:

Assessment	Status	Assessment progress	Your improvement act...	Microsoft actions	Group	Product	Regulation
Group1 (2)							
Assessment1	Incomplete	64%	0 of 227 completed	355 of 355 completed	Group1	Microsoft 365	CSA CCM
Assessment2	Incomplete	64%	1 of 177 completed	195 of 195 completed	Group1	Intune	HIRAA/HITECH

For each of the following statements, select Yes if the statement is true. Otherwise, select No. NOTE: Each correct selection is worth one point.

Answer Area

Statements	Yes	No
User1 can edit the title of Assessment1.	<input type="radio"/>	<input type="radio"/>
To Group1, User2 can add an assessment that uses the HIPA/HITECH template.	<input type="radio"/>	<input type="radio"/>
To Group1, User3 can add an assessment that uses the HIPA/HITECH or Microsoft 365	<input type="radio"/>	<input type="radio"/>

- A. Mastered
- B. Not Mastered

Answer: A

Explanation:

Answer Area

Statements	Yes	No
User1 can edit the title of Assessment1.	<input type="radio"/>	<input checked="" type="radio"/>
To Group1, User2 can add an assessment that uses the HIPA/HITECH template.	<input type="radio"/>	<input checked="" type="radio"/>
To Group1, User3 can add an assessment that uses the HIPA/HITECH or Microsoft 365	<input type="radio"/>	<input checked="" type="radio"/>

NEW QUESTION 111

- (Topic 1)  
You have a Microsoft 365 E5 tenant.  
You create a data loss prevention (DLP) policy.  
You need to ensure that the policy protects documents in Microsoft Teams chat sessions. Which location should you enable in the policy?

- A. OneDrive accounts
- B. Teams chat and channel messages
- C. Exchange email
- D. SharePoint sites

Answer: A

NEW QUESTION 113

- (Topic 1)  
You have a Microsoft 365 E5 subscription. You need to create a subject rights request What can be configured as a search location?

- A. Microsoft Exchange Online and Teams only
- B. Microsoft Exchange Online, SharePoint Online, and Teams
- C. Microsoft Exchange Online only
- D. Microsoft Exchange Online and SharePoint Online only
- E. Microsoft SharePoint Online only

Answer: B

NEW QUESTION 117

- (Topic 1)  
You have a Microsoft 365 tenant.  
All Microsoft OneDrive for Business content is retained roe five years.  
A user named User1 left your company a year ago, after which the account of User 1 was deleted from Azure Active Directory (Azure AD)  
You need to recover an important file that was stored in the OneDrive of User1. What should you use?

- A. the Restore-SPODeletedSite PowerShell cmdlet
- B. the OneDrive recycle bin
- C. the Restore-ADObject PowerShell cmdlet
- D. Deleted users in the Microsoft 365 admin center

Answer: B

Explanation:

Reference:  
<https://docs.microsoft.com/en-us/onedrive/set-retention> <https://docs.microsoft.com/en-us/onedrive/retention-and-deletion>

NEW QUESTION 121

HOTSPOT - (Topic 1)  
You have a Microsoft 365 tenant named contoso.com that contains two users named User1 and User2. The tenant uses Microsoft Office 365 Message Encryption (OME).

User1 plans to send emails that contain attachments as shown in the following table.

Subject	To	Attachment type	Message size
Mail1	User2@contoso.com	.docx	40 MB
Mail2	User4@outlook.com	.doc	3 MB
Mail3	User3@gmail.com	.xlsx	7 MB

User2 plans to send emails that contain attachments as shown in the following table.

Subject	To	Attachment type	Message size
Mail4	User1@contoso.com	.pptx	4 MB
Mail5	User4@outlook.com	.jpg	6 MB
Mail6	User3@gmail.com	.docx	3 MB

For which emails will the attachments be protected? To answer, select the appropriate options in the answer area.

NOTE: Each correct selection is worth one point.

User1:

▼

Mail1 only

Mail3 only

Mail1 and Mail2 only

Mail2 and Mail3 only

Mail1, Mail2, and Mail3

User2:

▼

Mail5 only

Mail6 only

Mail4 and Mail5 only

Mail4 and Mail6 only

Mail1, Mail2, and Mail3

- A. Mastered
- B. Not Mastered

Answer: A

Explanation:

User1:

▼

Mail1 only

Mail3 only

Mail1 and Mail2 only

Mail2 and Mail3 only

Mail1, Mail2, and Mail3

User2:

▼

Mail5 only

Mail6 only

Mail4 and Mail5 only

Mail4 and Mail6 only

Mail1, Mail2, and Mail3

NEW QUESTION 126

- (Topic 1)

You are creating an advanced data loss prevention (DLP) rule in a DLP policy named Policy 1 that will have all locations selected. Which two conditions can you use in the rule? Each correct answer presents a complete solution. (Choose two.)

NOTE: Each correct selection is worth one point.

- A. Content contains
- B. Content is shared from Microsoft 365
- C. Document size equals or is greater than
- D. Attachment's file extension is
- E. Document property is

**Answer:** AB

#### NEW QUESTION 131

- (Topic 1)

At the end of a project, you upload project documents to a Microsoft SharePoint Online library that contains many files. The following is a sample of the project document file names:

- ? aei\_AA989.docx
- ? bci\_WS098.docx
- ? cei\_DF112.docx
- ? ebc\_QQ454.docx
- ? ecc\_BB565.docx

All documents that use this naming format must be labeled as Project Documents: You need to create an auto-apply retention label policy. What should you use to identify the files?

- A. A sensitive info type
- B. A retention label
- C. A trainable classifier

**Answer:** C

#### Explanation:

Reference:

<https://docs.microsoft.com/en-us/microsoft-365/compliance/classifier-get-started-with?view=o365-worldwide>

#### NEW QUESTION 135

HOTSPOT - (Topic 1)

You have a Microsoft 365 E5 subscription that uses Microsoft Purview.

You need to deploy a compliance solution that will detect the accidental oversharing of information outside of an organization. The solution must minimize administrative effort.

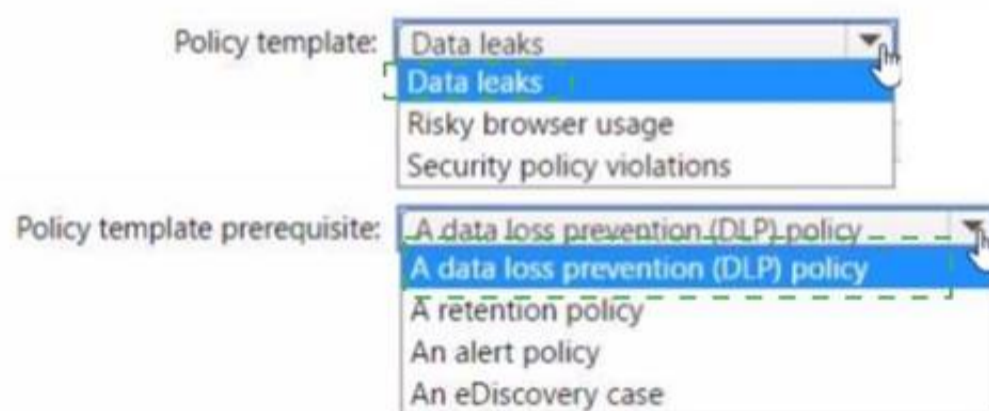
What should you use? To answer, select the appropriate options in the answer area. NOTE: Each correct selection is worth one point.

- A. Mastered
- B. Not Mastered

**Answer:** A

#### Explanation:

**Answer Area**



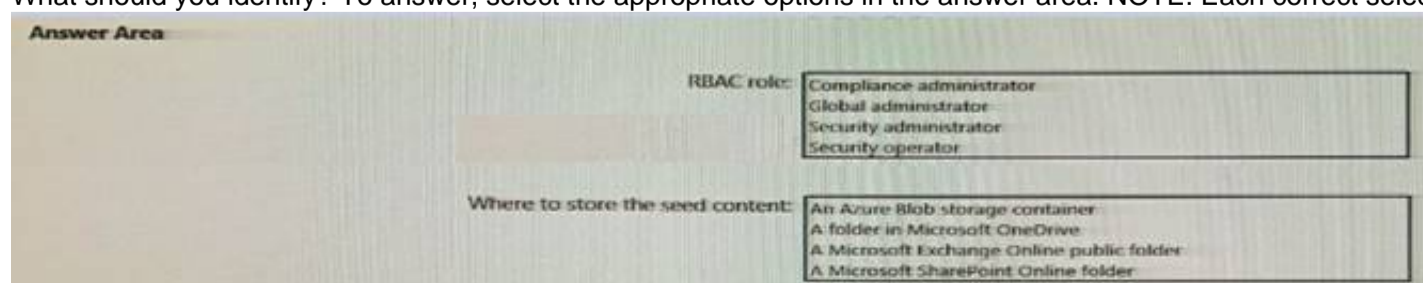
#### NEW QUESTION 138

HOTSPOT - (Topic 1)

You plan to create a custom trainable classifier based on an organizational form template.

You need to identify which role based access control (RBAC ) role is required to create the trainable classifier and where to classifier. The solution must use the principle of least privilege.

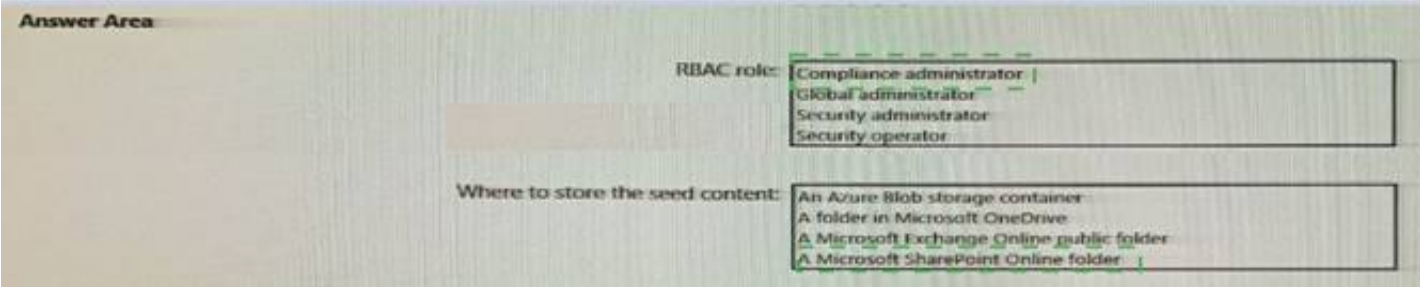
What should you identify? To answer, select the appropriate options in the answer area. NOTE: Each correct selection is worth one point.



- A. Mastered
- B. Not Mastered

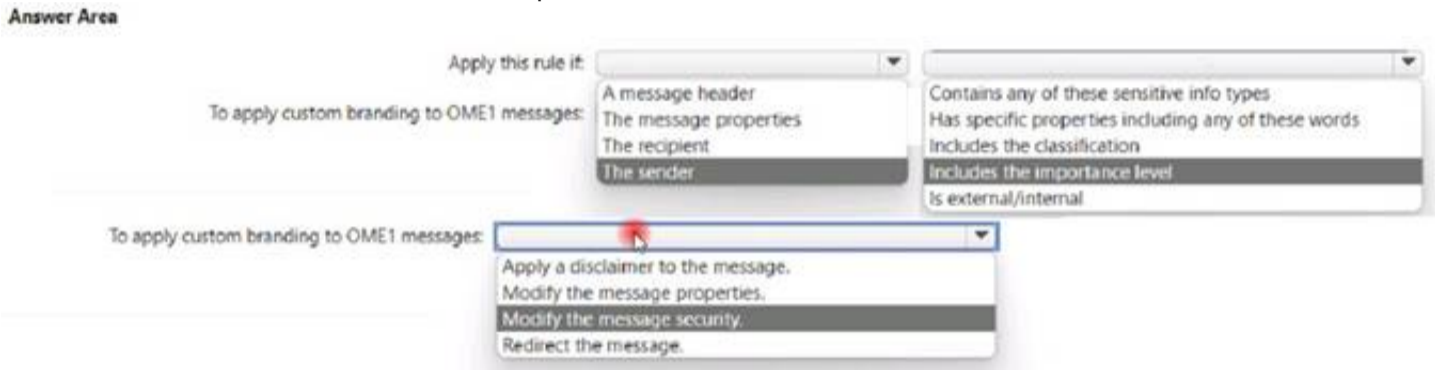
Answer: A

Explanation:



NEW QUESTION 142

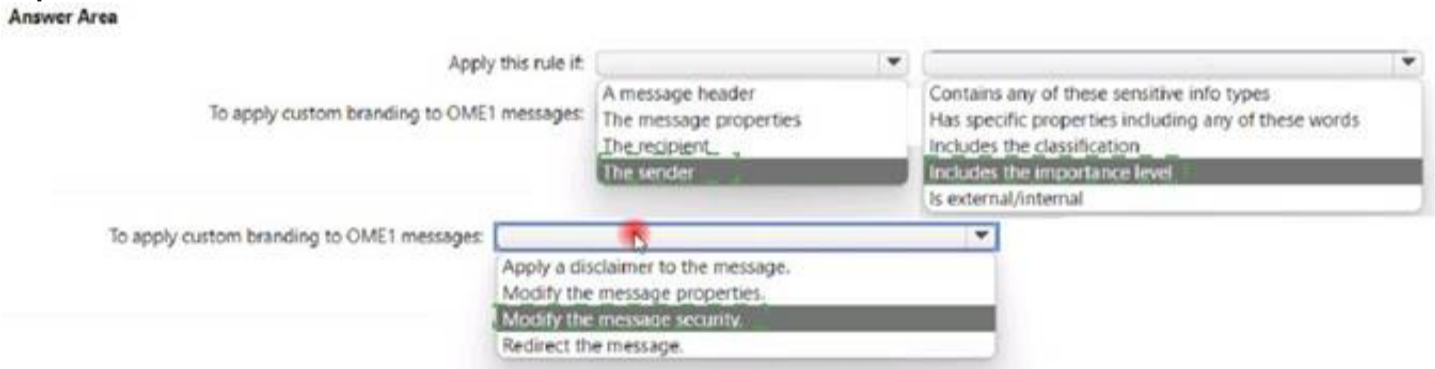
HOTSPOT - (Topic 1)  
You have a Microsoft 365 E5 subscription.  
You have a Microsoft Office 365 Advanced Message Encryption branding template named OME1.  
You need to create a Microsoft Exchange Online mail flow rule to apply OME1 to email.  
How should you configure the rule? To answer, select the appropriate options in the answer area.  
NOTE: Each correct selection is worth one point.



- A. Mastered
- B. Not Mastered

Answer: A

Explanation:



NEW QUESTION 146

- (Topic 1)  
You have a Microsoft 365 E5 subscription that contains the users shown in the following table.

Name	Role group
Admin1	eDiscovery Manager
Admin2	eDiscovery Administrator
Admin3	none

You need to ensure that Admin3 can create holds in owing table. To what should you add Admin3?

- A. the Global Administrator role
- B. the eDiscovery Manager role group
- C. the Compliance Manager Contributors role group
- D. the eDiscovery Administrator role group

Answer: D

NEW QUESTION 148

- (Topic 1)  
Your company manufactures parts that are each assigned a unique 12-character alphanumeric serial number. Emails between the company and its customers refer in the serial number.  
You need to ensure that all Microsoft Exchange Online emails containing the serial numbers are retained for five years.

Which three objects should you create? Each correct answer presents part of the solution.  
 NOTE: Each correct selection is worth one point.

- A. a trainable classifier
- B. a sensitive info type
- C. a retention polity
- D. a data loss prevention (DLP) policy
- E. an auto-labeling policy
- F. a retention label
- G. a sensitivity label

**Answer:** BEF

**Explanation:**

Reference:

<https://docs.microsoft.com/en-us/microsoft-365/compliance/sensitive-information-type-learn-about?view=o365-worldwide>

<https://docs.microsoft.com/en-us/microsoft-365/compliance/apply-sensitivity-label-automatically?view=o365-worldwide>

<https://docs.microsoft.com/en-us/microsoft-365/compliance/retention?view=o365-worldwide>

**NEW QUESTION 152**

HOTSPOT - (Topic 1)

You use project codes that have a format of three alphabetical characters that represent the project type, followed by three digits, for example Abc123.

You need to create a new sensitive info type for the project codes.

How should you configure the regular expression to detect the content? To answer, select the appropriate options in the answer area.

NOTE: Each correct selection is worth one point.

(\s)(  ) \ (  ) (\s)

[aA]{3}	d{000-999}
[abc]{3}	d{123}
[alpha]{3}	d{3}
[a-zA-Z]{3}	

- A. Mastered
- B. Not Mastered

**Answer:** A

**Explanation:**

(\s)(  ) \ (  ) (\s)

[aA]{3}	d{000-999}
[abc]{3}	d{123}
[alpha]{3}	d{3}
[a-zA-Z]{3}	

**NEW QUESTION 156**

HOTSPOT - (Topic 1)

You have a Microsoft 365 subscription that contains two groups named Group1 and Group2.

You have the compliance assessments shown in the following table.

Name	Group
Ca1	Group1
Ca2	Group1
Ca3	Group2

You have the improvement actions shown in the following table.

Action	Compliance assessment	Improvement action	Points	Action type
Action1	Ca1	Create and publish a retention label	5	Technical
Action2	Ca2	Create and publish a retention label	5	Technical
Action3	Ca3	Enable Windows 10 Security baseline	5	Technical
Action4	Ca1	Restrict access to privileged accounts	10	Operational
Action5	Ca2	Update security awareness training	10	Operational
Action6	Ca3	Update security awareness training	10	Operational

You perform the following actions:

- Create and publish a retention label.
- Implement security awareness training for all users.
- For Action4, change Implementation status to Implemented

For each of the following statements, select Yes if the statement is true. Otherwise, select No.

NOTE: Each correct selection is worth one point.

Answer Area

Statements	Yes	No
The compliance score for Ca1 will increase by 15 points.	<input type="radio"/>	<input type="radio"/>
The compliance score for Ca2 will increase by 15 points.	<input type="radio"/>	<input type="radio"/>
The compliance score for Ca3 will increase by 10 points.	<input type="radio"/>	<input type="radio"/>

- A. Mastered  
B. Not Mastered

Answer: A

Explanation:

Answer Area

Statements	Yes	No
The compliance score for Ca1 will increase by 15 points.	<input checked="" type="radio"/>	<input type="radio"/>
The compliance score for Ca2 will increase by 15 points.	<input type="radio"/>	<input checked="" type="radio"/>
The compliance score for Ca3 will increase by 10 points.	<input checked="" type="radio"/>	<input type="radio"/>

NEW QUESTION 158

DRAG DROP - (Topic 1)

You have a Microsoft 365 tenant.

A new regulatory requirement states that all documents containing a patent ID be labeled, retained for 10 years, and then deleted. The policy used to apply the retention settings must never be disabled or deleted by anyone.

You need to implement the regulatory requirement.

Which three actions should you perform in sequence? To answer, move the appropriate actions from the list of actions to the answer area and arrange them in the correct order. (Choose three.)

Actions

Answer Area

Create a retention policy.

Add a preservation lock.

Add a management lock.

Create a retention label.

Create a retention label policy.

- A. Mastered  
B. Not Mastered

Answer: A

Explanation:

## Actions

- Create a retention policy.
- Add a preservation lock.
- Add a management lock.
- Create a retention label.
- Create a retention label policy.

## Answer Area

- Create a retention label.
- Create a retention label policy.
- Add a preservation lock.

### NEW QUESTION 161

HOTSPOT - (Topic 1)

You have a Microsoft 365 E5 tenant.

You need to create a custom trainable classifier that will detect product order forms. The solution must use the principle of least privilege.

What should you do first? To answer, select the appropriate options in the answer area. NOTE: Each correct selection is worth one point.

Answer Area

Action to perform: Create an Exact Data Match (EDM) schema

To perform the action, assign the role of: Compliance Administrator

- A. Mastered
- B. Not Mastered

Answer: A

Explanation:

Answer Area

Action to perform: Create an Exact Data Match (EDM) schema

To perform the action, assign the role of: Compliance Administrator

### NEW QUESTION 162

- (Topic 1)

You have a Microsoft 365 E5 tenant.

You need to add a new keyword dictionary. What should you create?

- A. a trainable classifier
- B. a sensitivity label E3
- C. a sensitive info type
- D. a retention policy

Answer: C

### NEW QUESTION 166

- (Topic 1)

Note: This question is part of a series of questions that present the same scenario. Each question in the series contains a unique solution that might meet the stated goals. Some question sets might have more than one correct solution, while others might not have a correct solution.

After you answer a question in this section, you will NOT be able to return to it. As a result, these questions will not appear in the review screen.

You have a Microsoft 365 tenant and 500 computers that run Windows 10. The computers are onboarded to the Microsoft 365 compliance center.

You discover that a third-party application named Tailspin\_scanner.exe accessed protected sensitive information on multiple computers. Tailspin\_scanner.exe is installed locally on the computers.

You need to block Tailspin\_scanner.exe from accessing sensitive documents without preventing the application from accessing other documents.

Solution: From the Microsoft 365 Endpoint data loss prevention (Endpoint DLP) settings, you add a folder path to the file path exclusions.

Does this meet the goal?

- A. Yes
- B. No

Answer: B

Explanation:

Folder path to the file path exclusions excludes certain paths and files from DLP monitoring.

Use the unallowed apps list instead.

Reference:

<https://docs.microsoft.com/en-us/microsoft-365/compliance/endpoint-dlp-using?view=o365-worldwide>

#### NEW QUESTION 171

- (Topic 1)

Note: This question is part of a series of questions that present the same scenario. Each question in the series contains a unique solution that might meet the stated goals. Some question sets might have more than one correct solution, while others might not have a correct solution.

After you answer a question in this section, you will NOT be able to return to it. As a result, these questions will not appear in the review screen.

You recently discovered that the developers at your company emailed Azure Storage keys in plain text to third parties.

You need to ensure that when Azure Storage keys are emailed, the emails are encrypted. Solution: You configure a mail flow rule that matches the text patterns.

Does this meet the goal?

A. Yes

B. No

**Answer: B**

#### Explanation:

Reference:

<https://docs.microsoft.com/en-us/exchange/policy-and-compliance/mail-flow-rules/conditions-and-exceptions?view=exchserver-2019>

#### NEW QUESTION 175

- (Topic 1)

You have a Microsoft 365 E5 subscription that uses Microsoft Defender for Cloud Apps.

You need to ensure that you receive an alert when a user uploads a document to a third- party cloud storage service.

What should you use?

A. an insider risk policy

B. a file policy

C. a sensitivity label

D. an activity policy

**Answer: D**

#### NEW QUESTION 177

- (Topic 1)

You have a Microsoft 365 tenant that contains the users shown in the following table.

Name	Role
User1	Global administrator
User2	Security administrator
User3	Compliance administrator
User4	Search administrator

You configure a retention label to trigger a disposition review at the end of the retention period.

Which users can access the Disposition tab in the Microsoft 365 compliance center to review the content?

A. User1 only

B. User2 only

C. User3 only

D. User1 and User3

E. User3 and User4

**Answer: C**

#### Explanation:

Reference:

D18912E1457D5D1DDCBD40AB3BF70D5D

<https://docs.microsoft.com/en-us/microsoft-365/security/office-365-security/permissions-in-the-security-andcompliance-center?view=o365-worldwide>

#### NEW QUESTION 182

- (Topic 1)

In Microsoft Exchange Online, you have a retention policy named Policy1 that applies a retention tag named Tag1.

You plan to remove Tag1 from Policy1.

What will occur when you remove the tag from Policy1?

A. The content will remain tagged and the Managed Folder Assistant will process Tag1.

B. Tag1 will be removed if Policy1 applied the tag to the content.

C. The content will remain tagged, but the Managed Folder Assistant will ignore Tag1.

**Answer: A**

#### Explanation:

Reference:

<https://docs.microsoft.com/en-us/exchange/security-and-compliance/messaging-records- management/>

retention-tags-and-policies#removing-or-deleting-a-retention-tag-from-a-retention-policy

**NEW QUESTION 186**

- (Topic 1)

You need to recommend a solution to configuration the Microsoft 365 Records management settings by using the CSV file must meet the compliance requirements.

What should you recommend?

- A. From the Microsoft 365 compliance center, import the CSV file to a file plan.
- B. Use EdmUploadAgent.exe to upload a hash of the CSV to a datastore.
- C. Use a PowerShell command that pipes the import csv cmdlet to the New- RetentionPolicy cmdlet.
- D. Use a PowerShell command that pipes the import-csv cmdlet to the New-Label cmdlet.

**Answer:** A

**Explanation:**

Reference:

<https://docs.microsoft.com/en-us/microsoft-365/compliance/file-plan-manager?view=o365-worldwide#import-retention-labels-into-your-file-plan>

**NEW QUESTION 191**

HOTSPOT - (Topic 1)

You have a Microsoft 365 E5 subscription.

You are evaluating Data Protection Baseline compliance by using Compliance Manager. You need to identify improvement actions that meet the following requirements:

- Provide data loss prevention (DLP) policy recommendations.
- Provide Data Protection Baseline recommendations.

Which filter should you use for each requirement? To answer, select the appropriate options in the answer area.

**Answer Area**

DLP policy recommendations: 

Data Protection Baseline recommendations: 

- A. Mastered
- B. Not Mastered

**Answer:** A

**Explanation:**

**Answer Area**

DLP policy recommendations: 

Data Protection Baseline recommendations: 

**NEW QUESTION 195**

HOTSPOT - (Topic 1)

You plan to implement a sensitive information type based on a trainable classifier. The sensitive information type will identify employment contracts.

You need to copy the required files to Microsoft SharePoint Online folders to train the classifier.

What should you use to seed content and test the classifier? To answer, select the appropriate options in the answer area.

NOTE: Each correct selection is worth one point.

**Answer Area**

Seed content:

- Only files that are poor examples of employment contracts.
- Only files that are good examples of employment contracts.
- Files that are a mix of good and poor examples of employment contracts.
- A file that contains the metadata of the employment contracts in the CSV format.
- A file that contains the metadata of the employment contracts in the JSON format.

Testing the classifier:

- Only files that are poor examples of employment contracts.
- Only files that are good examples of employment contracts.
- Files that are a mix of good and poor examples of employment contracts.
- A file that contains the metadata of the employment contracts in the CSV format.
- A file that contains the metadata of the employment contracts in the JSON format.

- A. Mastered  
 B. Not Mastered

**Answer:** A

**Explanation:**

**Answer Area**

Seed content:

- Only files that are poor examples of employment contracts.
- Only files that are good examples of employment contracts.
- Files that are a mix of good and poor examples of employment contracts.
- A file that contains the metadata of the employment contracts in the CSV format.
- A file that contains the metadata of the employment contracts in the JSON format.

Testing the classifier:

- Only files that are poor examples of employment contracts.
- Only files that are good examples of employment contracts.
- Files that are a mix of good and poor examples of employment contracts.
- A file that contains the metadata of the employment contracts in the CSV format.
- A file that contains the metadata of the employment contracts in the JSON format.

### NEW QUESTION 199

- (Topic 1)

You have a Microsoft 365 E5 tenant and the Windows 10 devices shown in the following table.

Name	Azure Active Directory (Azure AD)-joined	Configuration
Device1	Yes	Onboarded to the Microsoft 365 compliance center
Device2	Yes	Onboarded to Microsoft Defender for Endpoint
Device3	Yes	Enrolled in Microsoft Intune
Device4	No	Enrolled in Microsoft Intune

To which devices can you apply Microsoft 365 Endpoint data loss prevention (Endpoint DLP) settings?

- A. Device1, Device3, and Device4 only  
 B. Device1, Device2, Device3, and Device4  
 C. Device1 and Device2 only  
 D. Device1 and Device3 only  
 E. Device1 only

**Answer:** C

**Explanation:**

Reference:

<https://docs.microsoft.com/en-us/microsoft-365/compliance/endpoint-dlp-getting-started?view=o365-worldwide>

### NEW QUESTION 201

- (Topic 1)

You have a Microsoft 365 tenant that has a retention label policy. You need to configure the policy to meet the following requirements:

- Prevent the disabling or deletion of the policy.
- Ensure that new labels can be added.
- Prevent the removal of labels.

What should you do?

- A. Import a file plan.  
 B. Enable insider risk management.  
 C. Enable the regulatory record options.  
 D. Create a preservation lock.

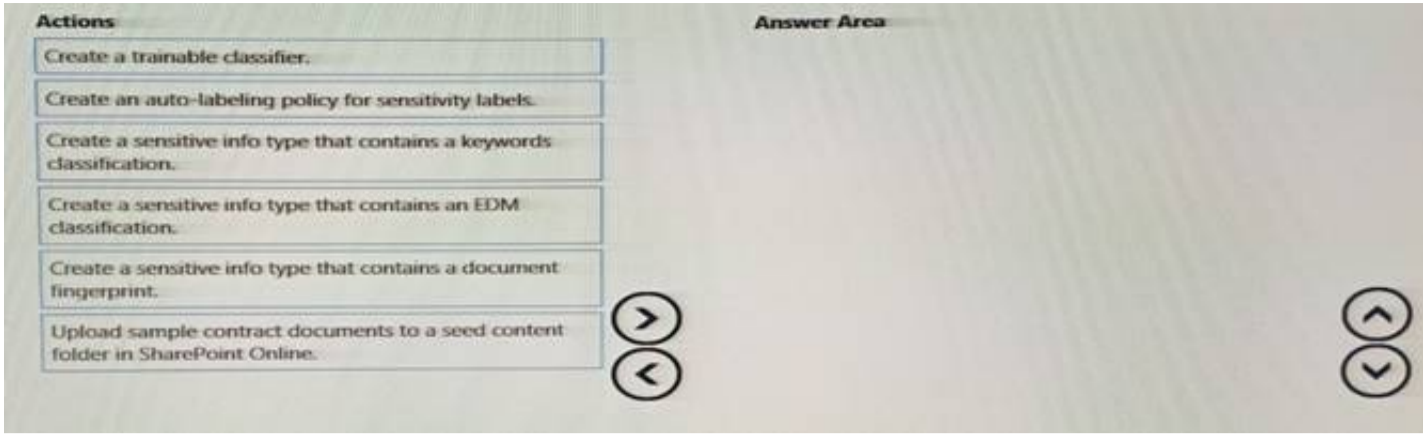
**Answer:** D

### NEW QUESTION 206

DRAG DROP - (Topic 1)

You need to recommend a solution that meets the sales requirements.

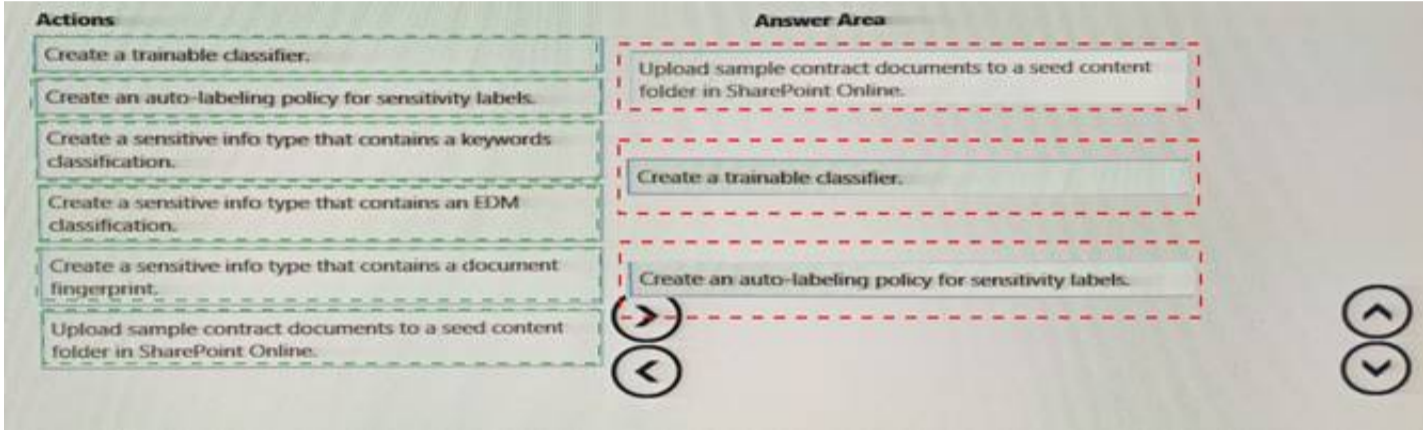
Which three actions should you perform in sequence? To answer, move the appropriate actions from the list of actions to the answer area and arrange them in the correct order.



- A. Mastered
- B. Not Mastered

Answer: A

Explanation:



#### NEW QUESTION 208

- (Topic 1)

You have a Microsoft 365 ES subscription.

You need to create a Microsoft Defender for Cloud Apps policy that will detect data loss prevention (DLP) violations.

What should you create?

- A. an activity policy
- B. a session policy
- C. a Cloud Discovery
- D. a file policy

Answer: D

#### NEW QUESTION 210

- (Topic 1)

Your company has a Microsoft 365 tenant that uses a domain named contoso.com. You are implementing data loss prevention (DLP).

The company's default browser is Microsoft Edge.

During a recent audit, you discover that some users use Firefox and Google Chrome browsers to upload files labeled as Confidential to a third-party Microsoft SharePoint Online site that has a URL of <https://m365x076709.sharepoint.com>. Users are blocked from uploading the confidential files to the site from Microsoft Edge.

You need to ensure that the users cannot upload files labeled as Confidential from Firefox and Google Chrome to any cloud services.

Which two actions should you perform? Each correct answer presents part of the solution. (Choose two.)

NOTE: Each correct selection is worth one point.

- A. From the Microsoft 365 Endpoint data loss prevention (Endpoint) DLP settings, add m365x076709.sharepoint.com as a blocked service domain.
- B. Create a DLP policy that applies to the Devices location.
- C. From the Microsoft 365 Endpoint data loss prevention (Endpoint DLP) settings, add Firefox and GoogleChrome to the unallowed browsers list.
- D. From the Microsoft 365 compliance center, onboard the devices.
- E. From the Microsoft 365 Endpoint data loss prevention (Endpoint) DLP settings, add contoso.com as anallowed service domain.

Answer: CD

Explanation:

Reference:

<https://docs.microsoft.com/en-us/microsoft-365/compliance/endpoint-dlp-learn-about?view=o365-worldwide>

#### NEW QUESTION 214

- (Topic 1)

You have a Microsoft 365 E5 tenant that contains the policies shown in the following table.

Name	Type	Retention period	Start the retention period based on	At the end of the retention period
Label1	Label	5 years	When items were created	Delete items automatically
Label2	Retention	7 years	When items were created	Delete items automatically
Label3	Retention	10 years	When items were created	Do nothing

A file named File1 has all the policies applied.  
How long will File1 be retained?

- A. File1 will be deleted automatically after seven years.
- B. File1 will be deleted automatically after five years.
- C. File1 will be retained until the file is deleted manually.
- D. File1 will be deleted automatically after 10 years.

**Answer: D**

### NEW QUESTION 218

HOTSPOT - (Topic 1)

You have a Microsoft 365 E5 subscription that contains a user named User1 and the groups shown in the following table.

Name	Type
Group1	Microsoft 365
Group2	Security

You have the Compliance Manager improvement action shown in the following exhibit

Compliance Manager > Improvement actions > Enable self-service password reset

E

Enable self-service password reset

Overview

Details

Implementation Status

Test Status

Not Implemented

Failed high risk

Points achieved

Group

0 / 27

Default Group

Managed by

Action scope

Your organization

Tenant

Action type

Products

Technical

Microsoft 365

Edit implementation details

How to implement

TECHNICAL

Microsoft 365

Documents

Assigned to

0

None

Assign action

Testing Source

Manual

Implementation

Testing

Standards and Regulations

Documents

Implementation status

Not Implemented

Implementation date

Not Available

Implementation notes

This action hasn't been implemented yet. Refer to the implementation instructions for this action.

Edit implementation details

How to implement

Microsoft recommends that your organization enable self-service password reset to allow users who have either forgotten their password or whose account has been locked out as a result of malicious attempts, using an alternate factor to reset their password without the assistance of the help desk.

How to Use Microsoft Solutions to Implement

Your organization can use Azure Active Directory (Azure AD) to give users the ability to change or reset their password with no administrator or help desk involvement. Select **Launch Now** to enable Self-Service Password Reset (SSPR) by selecting "All" or "Selected" on the "Properties" page to determine applicable users.

Launch Now

Learn More

Let users reset their own passwords in Office 365

How it works: Azure Active Directory self-service password reset

Use the drop-down menus to select the answer choice that completes each statement based on the information presented in the graphic.  
NOTE: Each correct selection is worth one point.

## Answer Area

The Enable self-service password reset improvement action can be assigned to **[answer choice]**.

▼

User1 only  
Group1 only  
User1 and Group1 only  
Group1 and Group2 only  
User1, Group1, and Group2

Twenty-four hours after self-service password reset (SSPR) is enabled for all users, Points achieved will be **[answer choice]**.

▼

0/27  
1/27  
2/27  
5/27  
27/27

- A. Mastered
- B. Not Mastered

**Answer:** A

### Explanation:

User 1, Group 1, and Group 2 27/27

SSPR (Self-Service Password Reset) does not require an E5 license. SSPR is included in Microsoft 365 and Office 365 subscriptions, including lower-tiered plans such as Microsoft 365 Business Standard and Office 365 E3.

Microsoft 365 Groups can be configured to use SSPR (Self-Service Password Reset). In fact, Microsoft 365 Groups inherit the SSPR settings from the underlying Azure Active Directory (Azure AD) tenant.

SSPR (Self-Service Password Reset) can also be configured for security groups in Microsoft 365.

Like Microsoft 365 Groups, security groups in Microsoft 365 inherit the SSPR settings from the underlying Azure Active Directory (Azure AD) tenant. To enable SSPR for security groups, you need to ensure that SSPR is enabled in your Azure AD tenant and that the appropriate user accounts are registered for SSPR.

### NEW QUESTION 220

HOTSPOT - (Topic 1)

You plan to implement Microsoft 365 Endpoint data loss prevention (Endpoint DLP).

You need to identify which end user activities can be audited on the endpoints, and which activities can be restricted on the endpoints.

What should you identify for each activity? To answer, select the appropriate options in the answer area.

NOTE: Each correct selection is worth one point.

Print a protected document:

▼

Can be audited only  
Can be restricted only  
Can be audited and restricted

Create a document in a monitored location:

▼

Can be audited only  
Can be restricted only  
Can be audited and restricted

Copy a protected document to USB removable media:

▼

Can be audited only  
Can be restricted only  
Can be audited and restricted

- A. Mastered
- B. Not Mastered

**Answer:** A

### Explanation:

Print a protected document:

▼

Can be audited only

Can be restricted only

Can be audited and restricted

Create a document in a monitored location:

▼

Can be audited only

Can be restricted only

Can be audited and restricted

Copy a protected document to USB removable media:

▼

Can be audited only

Can be restricted only

Can be audited and restricted

#### NEW QUESTION 224

- (Topic 1)

You have a Microsoft 365 tenant that contains a Microsoft SharePoint Online site named Site1. You have the users shown in the following table.

Name	Group/role
User1	Site1 member group
User2	Site1 member group
User3	Site1 owner group
User4	Sharepoint administrator role

You create a data loss prevention (DLP) policy for Site1 that detects credit card number information. You configure the policy to use the following protection action:

? When content matches the policy conditions, show policy tips to users and send them an email notification. You use the default notification settings.

To Site1, User1 uploads a file that contains a credit card number. Which users receive an email notification?

- A. User1 and User2 only
- B. User1 and User4 only
- C. User1, User2, User3, and User4
- D. User1 only
- E. User1 and User3 only

**Answer:** D

**Explanation:**

Reference:

<https://docs.microsoft.com/en-us/microsoft-365/compliance/get-started-with-the-default-dlp-policy?view=o365-worldwide>

#### NEW QUESTION 228

- (Topic 1)

Note: This question is part of a series of questions that present the same scenario. Each question in the series contains a unique solution that might meet the stated goals. Some question sets might have more than one correct solution, while others might not have a correct solution.

After you answer a question in this section, you will NOT be able to return to it. As a result, these questions will not appear in the review screen.

You have a Microsoft 365 E5 subscription.

You need to identify resumes that are stored in the subscription by using a built-in trainable classifier.

Solution: You create an auto-labeling policy for a sensitivity label.

Does this meet the goal?

- A. Yes
- B. NO

**Answer:** A

#### NEW QUESTION 231

HOTSPOT - (Topic 1)

You have a Microsoft 365 E5 subscription.

You need to deploy a compliance solution that meets the following requirements:

- Prevents users from performing data transfers that breach local regulations
- Minimizes effort to respond to requests for a user's personal data

What should you use in the Microsoft Purview compliance portal? To answer, select the appropriate options in the answer area.

NOTE: Each correct selection is worth one point.

#### Answer Area

To prevent users from performing data transfers that breach local regulations:

Information barriers

Communication compliance

Information barriers

Insider risk management

Privacy risk management

To minimize effort to respond to requests for a user's personal data:

Subject rights request

Data loss prevention (DLP)

eDiscovery

Records management

Subject rights request

- A. Mastered
- B. Not Mastered

**Answer:** A

**Explanation:**

#### Answer Area

To prevent users from performing data transfers that breach local regulations:

Information barriers

Communication compliance

Information barriers

Insider risk management

Privacy risk management

To minimize effort to respond to requests for a user's personal data:

Subject rights request

Data loss prevention (DLP)

eDiscovery

Records management

Subject rights request

#### NEW QUESTION 233

- (Topic 1)

You have a Microsoft 365 E5 subscription that contains a Microsoft SharePoint Online site named Site1. Site1 contains a file named File1.

You have a retention policy named Retention1 that has the following settings:

- Retain items for a specific period

o Retention period: 5 years o At the end of the retention period: Delete items automatically Retention1 is applied to Site.

You need to ensure that File1 is deleted automatically after seven years. The solution must NOT affect the retention of other files on Site1.

What should you do first?

- A. Move File1 to a new folder and list the excluded locations for Retention1.
- B. Create a new retention policy.
- C. Create and publish a new retention label
- D. Move File1 to a new folder and configure the access control list (ACL) entries for File1.

**Answer:** C

#### NEW QUESTION 234

- (Topic 1)

Note: This question is part of a series of questions that present the same scenario. Each question in the series contains a unique solution that might meet the stated goals. Some question sets might have more than one correct solution, while others might not have a correct solution.

After you answer a question in this section, you will NOT be able to return to it. As a result, these questions will not appear in the review screen.

You recently discovered that the developers at your company emailed Azure Storage keys in plain text to third parties.

You need to ensure that when Azure Storage keys are emailed, the emails are encrypted. Solution: You configure a mail flow rule that matches a sensitive info type.

Does this meet the goal?

- A. Yes
- B. No

**Answer:** A

#### NEW QUESTION 236

- (Topic 1)

You have a Microsoft SharePoint Online site named Site1 that contains a document library. The library contains more than 1,000 documents. Some of the documents are job applicant resumes. All the documents are in the English language.

You plan to apply a sensitivity label automatically to any document identified as a resume. Only documents that contain work experience, education, and accomplishments must be labeled automatically.

You need to identify and categorize the resumes. The solution must minimize administrative effort.

What should you include in the solution?

- A. a trainable classifier
- B. a keyword dictionary OC.
- C. a function

D. an exact data match (EDM) classifier

**Answer:** A

**NEW QUESTION 237**

DRAG DROP - (Topic 1)

You have a Microsoft 365 tenant that uses data loss prevention (DLP). You have a custom employee information form named Template 1.docx.

You need to create a classification rule package based on the document fingerprint of Template1.docx.

Which three actions should you perform in sequence? To answer, move the appropriate actions from the list of actions to the answer area and arrange them in the correct order.

**Actions**

Run the Set-DlpSensitiveInformationType cmdlet.

Create a variable that contains the result of the New-DlpFingerprint cmdlet.

Run the New-DlpSensitiveInformationType cmdlet.

Create a variable that contains the result of the Get-Content cmdlet.

Create a variable that contains the result of the Get-ContentFilterPhrase cmdlet.

>

<

**Answer Area**

- A. Mastered
- B. Not Mastered

**Answer:** A

**Explanation:**

**Actions**

Run the Set-DlpSensitiveInformationType cmdlet.

Create a variable that contains the result of the New-DlpFingerprint cmdlet.

Run the New-DlpSensitiveInformationType cmdlet.

Create a variable that contains the result of the Get-Content cmdlet.

Create a variable that contains the result of the Get-ContentFilterPhrase cmdlet.

>

<

**Answer Area**

Create a variable that contains the result of the Get-Content cmdlet.

Create a variable that contains the result of the New-DlpFingerprint cmdlet.

Run the New-DlpSensitiveInformationType cmdlet.

**NEW QUESTION 240**

- (Topic 1)

You need to implement a solution that meets the compliance requirements for the Windows 10 computers.

Which two actions should you perform? Each correct answer presents part of the solution. NOTE: Each coned selection is worth one point.

- A. Deploy a Microsoft 365 Endpoint data loss prevention (Endpoint DLP) configuration package to the computers.
- B. Configure hybrid Azure AD join for all the computers.
- C. Configure the Microsoft Intune device enrollment settings.
- D. Configure a compliance policy in Microsoft Intune.
- E. Enroll the computers in Microsoft Defender for Endpoint protection.

**Answer:** BE

**Explanation:**

Reference:

<https://docs.microsoft.com/en-us/microsoft-365/compliance/endpoint-dlp-getting-started?view=o365-worldwide>

**NEW QUESTION 241**

HOTSPOT - (Topic 1)

You have a Microsoft 365 E5 subscription that contains the users shown in the following table.

Name	Microsoft 365 role	Role group
Admin1	Global Administrator	None
Admin2	Compliance Administrator	None
User3	User	Compliance Manager Contributors
User4	User	Compliance Manager Administrators
User5	User	None

You create an assessment named Assesment1 as shown in the following exhibit.

# Assessment1

**Status**  
● In progress

**Created**  
 1/15/2021

Generate report

Overview   Controls   Your improvement actions   Microsoft actions

Review details about this assessment and understand your progress toward completion.

## 49% Assessment progress

1083/2169

Your points achieved ⓘ

0/1086

Microsoft managed points achieved ⓘ

1083/1083

Which users can update the title of Assessment1, and which users can add User5 to the Compliance Manager Readers role group? To answer, select the appropriate options in the answer area.

NOTE: Each correct selection is worth one point.

Answer Area

Can update the Assessment1 title:

- Admin2 and User4 only
- User4 only
- Admin2 and User4 only
- Admin1, Admin2, and User4 only
- Admin1, Admin2, User3, and User4 only

Can add User5 to the Compliance Manager Readers role group:

- Admin1 and User4 only
- Admin1 only
- Admin1 and Admin2 only
- Admin1 and User4 only
- Admin1, Admin2, and User4 only

- A. Mastered
- B. Not Mastered

Answer: A

Explanation:

Answer Area

Can update the Assessment1 title:

- Admin2 and User4 only
- User4 only
- Admin2 and User4 only
- Admin1, Admin2, and User4 only
- Admin1, Admin2, User3, and User4 only

Can add User5 to the Compliance Manager Readers role group:

- Admin1 and User4 only
- Admin1 only
- Admin1 and Admin2 only
- Admin1 and User4 only
- Admin1, Admin2, and User4 only

### NEW QUESTION 246

- (Topic 1)

You have a Microsoft 365 subscription.

You have a user named User1. Several users have full access to the mailbox of User1. Some email messages sent to User1 appear to have been read and deleted before the user viewed them.

When you search the audit log in the Microsoft Purview compliance portal to identify who signed in to the mailbox of User1, the results are blank.

You need to ensure that you can view future sign-ins to the mailbox of User1. YOU run the Set-AdminAuditLogConfig -AdminAuditLogEnabled \$true -AdminiAuditLogCmdlets "Mailbox\*" command.

Does that meet the goal?

- A. Yes
- B. No

Answer: B

### NEW QUESTION 248

- (Topic 1)

You have a Microsoft 365 tenant that uses records management.

You use a retention label to mark legal files stored in a Microsoft SharePoint Online document library as regulatory records.

What can you do to the legal files?

- A. Remove the retention label of the files.
- B. Edit the properties of the files.
- C. Move the files to a different folder within the document library.
- D. Delete the content from the files.

**Answer: C**

**Explanation:**

Reference:

<https://docs.microsoft.com/en-us/microsoft-365/compliance/records-management?view=o365-worldwide#records>

#### NEW QUESTION 252

- (Topic 1)

You have a data loss prevention (DLP) policy that applies to the Devices location. The policy protects documents that contain States passport numbers.

Users reports that they cannot upload documents to a travel management website because of the policy.

You need to ensure that the users can upload the documents to the travel management website. The solution must prevent the protected content from being uploaded to other locations.

Which Microsoft 365 Endpoint data loss prevention (Endpoint DLP) setting should you configure?

- A. Unallowed apps
- B. File path exclusions
- C. Service domains
- D. Unallowed browsers

**Answer: C**

**Explanation:**

You can control whether sensitive files protected by your policies can be uploaded to specific service domains from Microsoft Edge.

? If the list mode is set to Block, then user will not be able to upload sensitive items to those domains. When an upload action is blocked because an item matches a DLP policy, DLP will either generate a warning or block the upload of the sensitive item.

? If the list mode is set to Allow, then users will be able to upload sensitive items only to those domains, and upload access to all other domains is not allowed.

Reference:

<https://docs.microsoft.com/en-us/microsoft-365/compliance/endpoint-dlp-using?view=o365-worldwide>

#### NEW QUESTION 255

- (Topic 1)

You implement Microsoft 365 Endpoint data loss prevention (Endpoint DLP).

You have computers that run Windows 10 and have Microsoft 365 Apps installed. The computers are joined to Azure Active Directory (Azure AD).

You need to ensure that Endpoint DLP policies can protect content on the computers. Solution: You enroll the computers in Microsoft intune.

Does this meet the goal?

- A. Yes
- B. No

**Answer: B**

**Explanation:**

Reference:

<https://docs.microsoft.com/en-us/microsoft-365/compliance/endpoint-dlp-getting-started?view=o365-worldwide>

#### NEW QUESTION 260

- (Topic 1)

You implement Microsoft 365 Endpoint data loss prevention (Endpoint DLP).

You have computers that run Windows 10 and have Microsoft 365 Apps installed. The computers are joined to Azure Active Directory (Azure AD).

You need to ensure that Endpoint DLP policies can protect content on the computers. Solution: You deploy the unified labeling client to the computers.

Does this meet the goal?

- A. Yes
- B. No

**Answer: B**

**Explanation:**

Reference:

<https://docs.microsoft.com/en-us/microsoft-365/compliance/endpoint-dlp-getting-started?view=o365-worldwide>

#### NEW QUESTION 261

- (Topic 1)

You have a Microsoft 365 E5 tenant that contains a Microsoft SharePoint Online document library named Library 1.

You need to declare a collection of files that are stored in Library1 as regulatory records. What should you use?

- A. a sensitivity label policy

- B. data loss prevention (DLP) policy
- C. a retention policy
- D. a retention label policy

**Answer:** D

#### NEW QUESTION 265

- (Topic 1)

You are planning a data loss prevention (DLP) solution that will apply to computers that run Windows 10.

You need to ensure that when users attempt to copy a file that contains sensitive information to a USB storage device, the following requirements are met:

- \* If the users are members of a group named Group1, the users must be allowed to copy the file, and an event must be recorded in the audit log.
- \* All other users must be blocked from copying the file. What should you create?

- A. one DLP policy that contains one DLP rule
- B. two DLP policies that each contains one DLP rule
- C. one DLP policy that contains two DLP rules

**Answer:** B

#### NEW QUESTION 268

- (Topic 1)

You have a Microsoft 365 E5 tenant that contains a Microsoft SharePoint Online site named Site1 and a user named User1. The tenant has auditing enabled. You need to ensure that User1 can perform disposition reviews. The solution must use the principle of the least privilege. What should you do?

- A. Assign User1 the Compliance Data Administrator role.
- B. Add User1 to the Records Management role group.
- C. Assign User1 the Data Investigator role.
- D. Add User1 to the Content Explorer Content Viewer role group.

**Answer:** B

#### NEW QUESTION 272

- (Topic 1)

A compliance administrator recently created several data loss prevention (DLP) policies. After the policies are created, you receive a higher than expected volume of DLP alerts. You need to identify which rules are generating the alerts.

Which DLP report should you use?

- A. Third-party DLP policy matches
- B. DLP policy matches
- C. DLP incidents
- D. False positive and override

**Answer:** B

#### Explanation:

Reference:

<https://docs.microsoft.com/en-us/microsoft-365/compliance/dlp-learn-about-dlp?view=o365-worldwide>

#### NEW QUESTION 277

HOTSPOT - (Topic 1)

You have a Microsoft 365 tenant.

A retention hold is applied to all the mailboxes in Microsoft Exchange Online.

A user named User1 leaves your company, and the account of User1 is deleted from Azure Active Directory (Azure AD).

You need to create a new user named User2 and provide User2 with access to the mailbox of User1.

How should you complete the PowerShell command? To answer, select the appropriate options in the answer area.

NOTE: Each correct selection is worth one point.

```
$InactiveMailbox = Get-Mailbox -InactiveMailboxOnly -Identity <distinguished name>
```

		\$InactiveMailbox.DistinguishedName
New-Mailbox	-InactiveMailbox	
New-MailboxRestoreRequest	-LitigationHoldEnabled	
Restore-RecoverableItems	-RetentionHoldEnabled	
Set-Mailbox	-SourceMailbox	

```
-Name User2 -DisplayName User2 -MicrosoftOnlineServicesID user2@contoso.com  
-Password (ConvertTo-SecureString -String 'RdFGFfhjjhgff$^7' -AsPlainText -Force)  
-ResetPasswordOnNextLogon $true
```

- A. Mastered
- B. Not Mastered

**Answer:** A

#### Explanation:

```
$InactiveMailbox = Get-Mailbox -InactiveMailboxOnly -Identity <distinguished name>
```

	\$InactiveMailbox.DistinguishedName
New-Mailbox	-InactiveMailbox
New-MailboxRestoreRequest	-LitigationHoldEnabled
Restore-RecoverableItems	-RetentionHoldEnabled
Set-Mailbox	-SourceMailbox

```
-Name User2 -DisplayName User2 -MicrosoftOnlineServicesID user2@contoso.com
-PassWord (ConvertTo-SecureString -String 'RdFGFfhjjhgff$^7' -AsPlainText -Force)
-ResetPasswordOnNextLogon $true
```

#### NEW QUESTION 279

DRAG DROP - (Topic 2)

You need to meet the technical requirements for the Site1 documents.

Which three actions should you perform in sequence? To answer, move the appropriate actions from the list of actions to the answer area and arrange them in the correct order.

#### Actions

#### Answer Area

- Create a retention label.
- Create a sensitivity label.
- Create a sensitive info type.
- Create an auto-labeling policy.
- Wait 24 hours and then turn on the policy.



- A. Mastered
- B. Not Mastered

Answer: A

Explanation:

#### Actions

#### Answer Area

- Create a retention label.
- Create a sensitivity label.
- Create a sensitive info type.
- Create an auto-labeling policy.
- Wait 24 hours and then turn on the policy.



#### NEW QUESTION 281

- (Topic 2)

You need to meet the technical requirements for the creation of the sensitivity labels. Which administrative users are currently missing the Sensitivity label administrator role?

- A. Admin1 only
- B. Admm1, Admin2, Admin4, and Admin5 only
- C. Admin 1. Admin2, and Admin3 only
- D. Admin 1 and Admin5 only
- E. Admin 1 and Admin4 only

Answer: C

#### NEW QUESTION 285

HOTSPOT - (Topic 2)

How many files in Site2 will be visible to User1 and User2 after you turn on DLPpolicy1? To answer, select the appropriate options in the answer area.

NOTE: Each correct selection is worth one point.

Number of files visible to User1:

	▼
1	
2	
3	
4	

Number of files visible to User2:

	▼
1	
2	
3	
4	

- A. Mastered
- B. Not Mastered

Answer: A

Explanation:

Number of files visible to User1:

	▼
1	
2	
3	
4	

Number of files visible to User2:

	▼
1	
2	
3	
4	

NEW QUESTION 288

- (Topic 2)  
You need to meet the technical requirements for the creation of the sensitivity labels. To which user or users must you grant the Sensitivity label administrator role?

- A. Admin1, Admin2, Admin4, and Admin5 only
- B. Admin1, Admin2, and Admin3 only
- C. Admin1 only
- D. Admin1 and Admin4 only
- E. Admin1 and Admin5 only

Answer: D

Explanation:

Compliance Data Administrator, Compliance Administrator, and Security Administrator already have the required permissions to create the labels. Reference:  
<https://docs.microsoft.com/en-us/microsoft-365/compliance/get-started-with-sensitivity-labels?view=o365-worldwide#permissions-required-to-create-and-manage-sensitivity-labels>

NEW QUESTION 291

.....

## Thank You for Trying Our Product

### We offer two products:

1st - We have Practice Tests Software with Actual Exam Questions

2nd - Questons and Answers in PDF Format

### SC-400 Practice Exam Features:

- \* SC-400 Questions and Answers Updated Frequently
- \* SC-400 Practice Questions Verified by Expert Senior Certified Staff
- \* SC-400 Most Realistic Questions that Guarantee you a Pass on Your FirstTry
- \* SC-400 Practice Test Questions in Multiple Choice Formats and Updatesfor 1 Year

**100% Actual & Verified — Instant Download, Please Click**  
**[Order The SC-400 Practice Test Here](#)**