

## 350-501 Dumps

# Implementing and Operating Cisco Service Provider Network Core Technologies

<https://www.certleader.com/350-501-dumps.html>



## NEW QUESTION 1

Simulation 7

Guidelines
Topology
Tasks

Guidelines
Topology
Tasks

Configure the IS-IS routing protocol for R1, R2, and R3 according to the topology to achieve these goals:

- Configure HMAC-MD5 authentication for R1, R2, and R3 links that form the IS-IS adjacency using the ISIS commands on the interfaces using these parameters:
  - key-chain name: AUTH\_ISIS
  - key ID: 2
  - password: C1sc0!
- Configure ISIS metric on R1, R2, and R3 to:
  - 15 for each level on all interfaces that form adjacency on router R1
  - 20 for each level on all interfaces that form adjacency on router R2
  - 25 for each level on all interface that form adjacency on R3

- A. Mastered  
B. Not Mastered

**Answer: A**

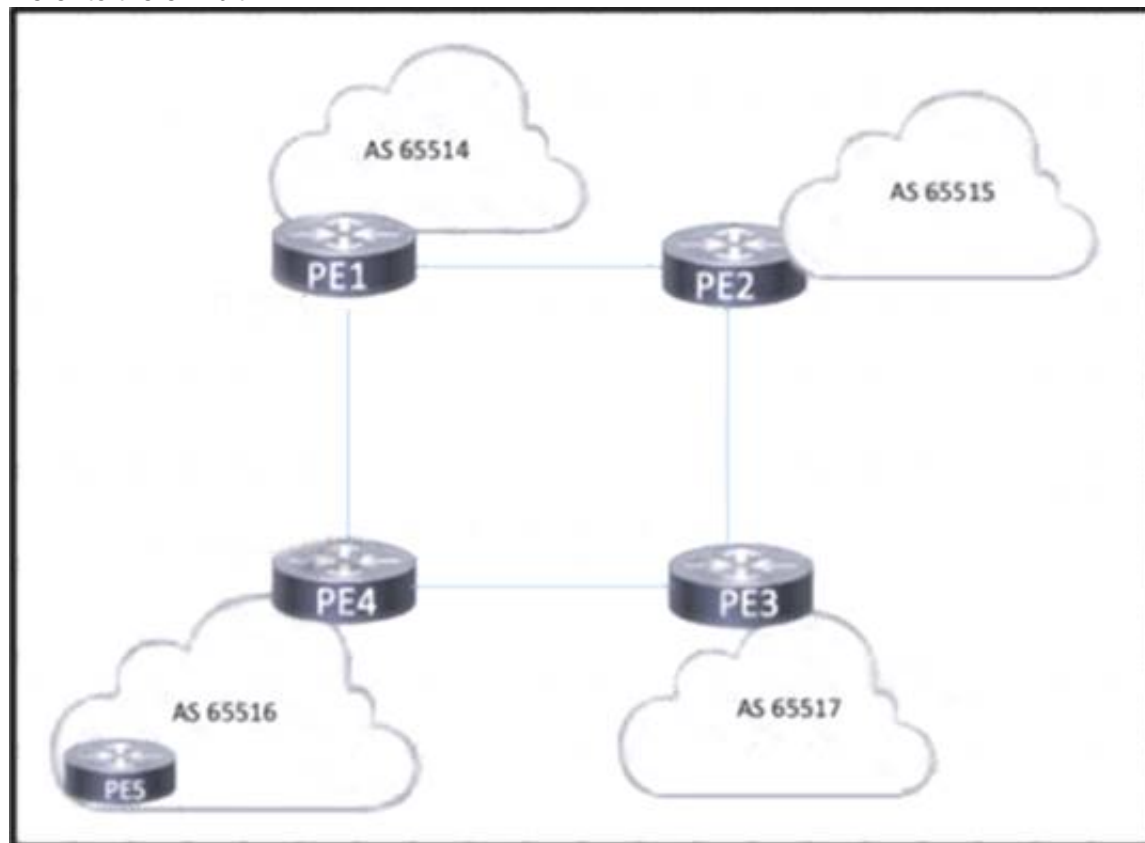
### Explanation:

R1  
key chain AUTH\_ISIS key 2  
key-string C1sco! exit  
int range et0/0 , et1/0  
isis authen key-chain AUTH\_ISIS ip isis  
isis metric 15 Copy run start R2

```
key chain AUTH_ISIS key 2
key-string C1sco! exit
int range et0/0 , et1/0
isis authen key-chain AUTH_ISIS ip isis
isis metric 20 Copy run start R3
key chain AUTH_ISIS key 2
key-string C1sco! exit
int range et0/0 , et1/0
isis authen key-chain AUTH_ISIS ip isis
isis metric 25 Copy run start
```

## NEW QUESTION 2

Refer to the exhibit.



Four midsize service providers provide access to different customers that use Layer 3 VPN services to enable communication across geographic regions. The service providers are connected as shown in the exhibit, and the PEs have established eBGP relationships. PE4 has an IBGP relationship with PE5. The routes that PE4 learns from PE5 must reach the other PE routers, but they are absent from the routing tables on the other PEs. Which action should the engineers take to correct the problem?

- A. Configure a peering between all five PEs.
- B. Disable BGP synchronization on PE4.
- C. Enable BGP IPv4 unicast on PE4 and PE5
- D. Advertise the route targets for PE5 to the other PEs

**Answer: A**

## NEW QUESTION 3

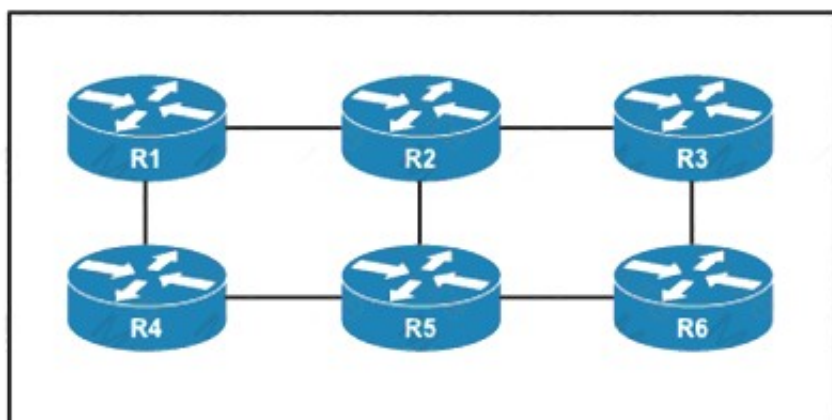
Which feature describes the adjacency SID?

- A. It applies only to point-to-point links.
- B. It applies only to multipoint links
- C. It is locally unique
- D. It is globally unique.

**Answer: C**

## NEW QUESTION 4

Refer to the exhibit.



An engineer is configuring an administrative domain in the given multi-vendor environment with PIM-SM. Which feature must the engineer implement so that devices will dynamically learn the RP?

- A. Auto-RP
- B. BIDIR-PIM

- C. SSM
- D. BSR

**Answer:** D

#### NEW QUESTION 5

Refer to the exhibit:

```
R1
router ospf 1
  area 2 stub no-summary

R2
router ospf 1
  area 3 nssa
```

In which way does router R1 operate differently than router R2?

- A. R1 sends LSA type 2 only, while R2 sends type 1 and type 7 LSAs
- B. R1 sends LSA types 1 and 2, while R2 sends type 1, 2, and 7 LSAs
- C. R1 sends LSA type 2 only and R2 sends LSA type 1 only
- D. R1 sends LSA types 5 and 7, while R2 sends type 1, 2, and 7 LSAs

**Answer:** B

#### NEW QUESTION 6

Exhibit:

```
R1#show ip bgp 35.33.13.0
BGP routing table entry for 35.33.13.0/24, version 24
Paths: (3 available, best #3, table Default-IP-Routing-Table)
...
10
  172.31.1.99 from 172.31.1.99 (1.1.1.1)
    Origin IGP, metric 100, localpref 200, valid, internal
10
  172.26.11.100 from 172.26.11.100 (3.3.3.3)
    Origin IGP, metric 120, localpref 200, valid, external
18293
  172.21.71.1 from 172.21.71.1 (2.2.2.2)
    Origin IGP, metric 150, localpref 200, valid, external, best
```

A network engineer must update the routing toward the web server with IP address 35.22.13.1. The primary path must be configured via the neighbor router with ID 1.1.1.1. However, local-preference configuration is not permitted on R1. Which task must the engineer perform on R1 to complete the implementation?

- A. Configure the device to choose the best MED from the same AS.
- B. Set the device to ignore the conditional MED if the route originated in a different autonomous system.
- C. Enable MED comparison between routes from neighbors in different AS.
- D. Implement deterministic MED to choose the best route from the different AS.

**Answer:** C

#### NEW QUESTION 7

Refer to the exhibit.



```

mpls traffic-eng tunnels

segment-routing mpls
connected-prefix-sid-map
address-family ipv4
 192.168.1.1/32 index 10 range 1
exit-address-family

set-attributes
address-family ipv4
sr-label-preferred
exit-address-family

interface Loopback1
ip address 192.168.1.1 255 255.255.255
ip router isis 1

int gig0/0
ip address 192.168.1.2 255.255.255.0
ip router isis 1
mpls traffic-eng tunnels
isis network point-to-point

router isis 1
net 50.0000.0000.0000.0001.00
metric-style wide
is-type level-1
segment-routing mpls
segment-routing prefix-sid-map advertise-local
mpls traffic-eng router-id Loopback1
mpls traffic-eng level-1
    
```

What type of configuration is it?

- A. It is configuration that requires an explicit Cisco MPLS TE path to be configured for the tunnel to run.
- B. It is configuration that requires OSPF to also be running to have optimized Cisco MPLS TE tunnels.
- C. It is configuration for the head-end router of a Cisco MPLS TE tunnel with segment routing.
- D. It is configuration that requires a dynamic Cisco MPLS TE path to be configured for the tunnel to run.

**Answer: C**

#### NEW QUESTION 8

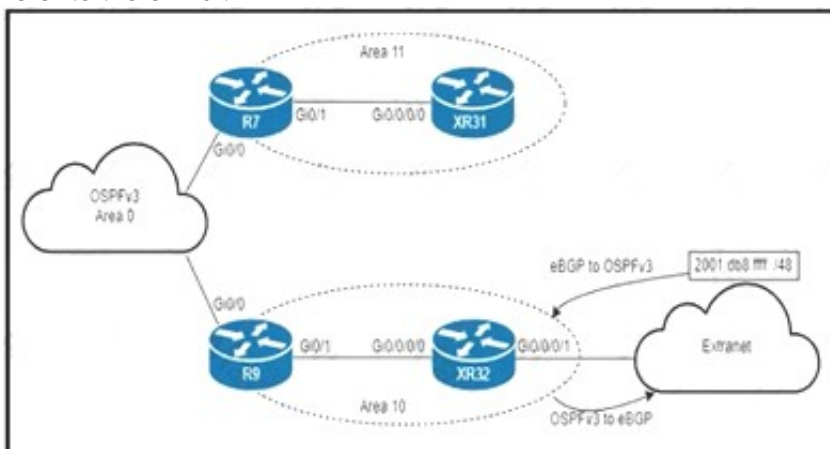
A network operator working for a telecommunication company with an employee Id: 4065 96080 is trying to implement BFD configuration on an existing network of Cisco devices. Which task must the engineer perform to enable BFD on the interfaces?

- A. Disable Cisco Express Forwarding on the interfaces
- B. Disable SSO on the interfaces
- C. Remove any static routes that point to the interfaces
- D. Remove the log option from any ACLs on the interfaces.

**Answer: D**

#### NEW QUESTION 9

Refer to the exhibit.



An engineer is updating this network to meet these conditions:

- Area 10 will receive inter-area routes and support mutual redistribution of external routes with the extranet.
- The ::/0 route is prohibited in Area 10.
- Area 11 will receive only the ::/0 route from the ABR.
- External route redistribution is not supported in Area 11.
- The ABR in Area 11 will advertise no interarea routes.

Which two configurations must be performed to meet the requirements? (Choose two.)

- A. Configure area 11 as nssa no-summary on R7 and as nssa on XR31.
- B. Configure area 10 as stub on R9 and XR32.
- C. Configure area 11 as stub no-summary on R7 and as stub on XR31.
- D. Configure area 11 as nssa default-information-originate on R7 and as nssa on XR31.
- E. Configure area 10 as nssa on R9 and XR32.

**Answer: CE**

#### NEW QUESTION 10

Which configuration modifies Local Packet Transport Services hardware policies?

A)

```
configure
lpts pifib hardware police
flow ospf unicast default rate 200
flow bgp configured rate 200
flow bgp default rate 100
!
lpts pifib hardware police location 0/2/CPU0
flow ospf unicast default rate 100
flow bgp configured rate 300
flow icmp application rate 100
flow icmp default rate 100
!
```

B)

```
configure
lpts punt police location 0/0/CPU0
exception invalid rate 400
protocol cdp rate 50
protocol arp rate 5000
protocol ipv4 options rate 100
exception icmp rate 200
```

C)

```
configure
lpts pifib police hardware
flow ospf unicast default rate 200
flow bgp configured rate 200
flow bgp default rate 100
!
lpts pifib police hardware location 0/2
flow ospf unicast default rate 100
flow bgp configured rate 300
flow icmp application rate 100
flow icmp default rate 100
!
```

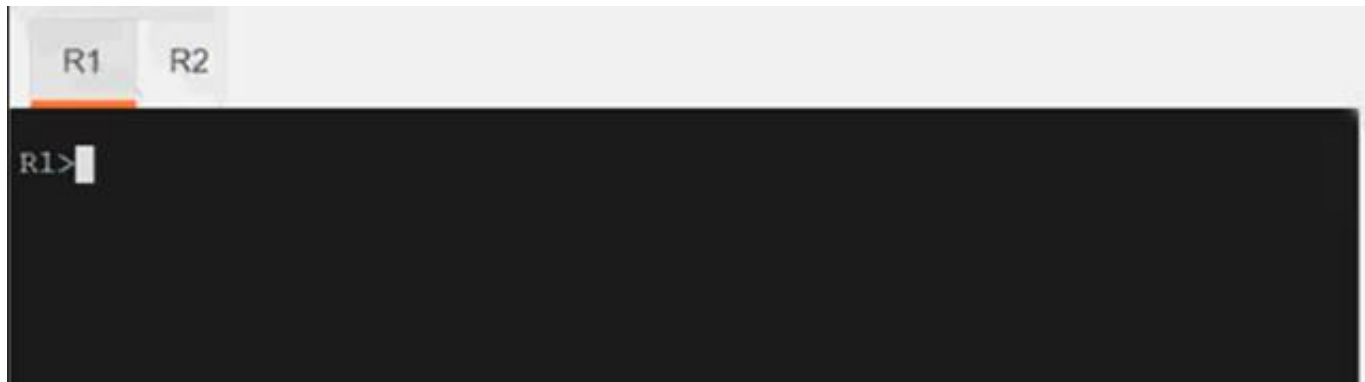
D)

```
configure
lpts police
exception invalid rate 400
protocol cdp rate 50
protocol arp rate 5000
```

- A. Option A
- B. Option B
- C. Option C
- D. Option D

**Answer:** C**NEW QUESTION 10**

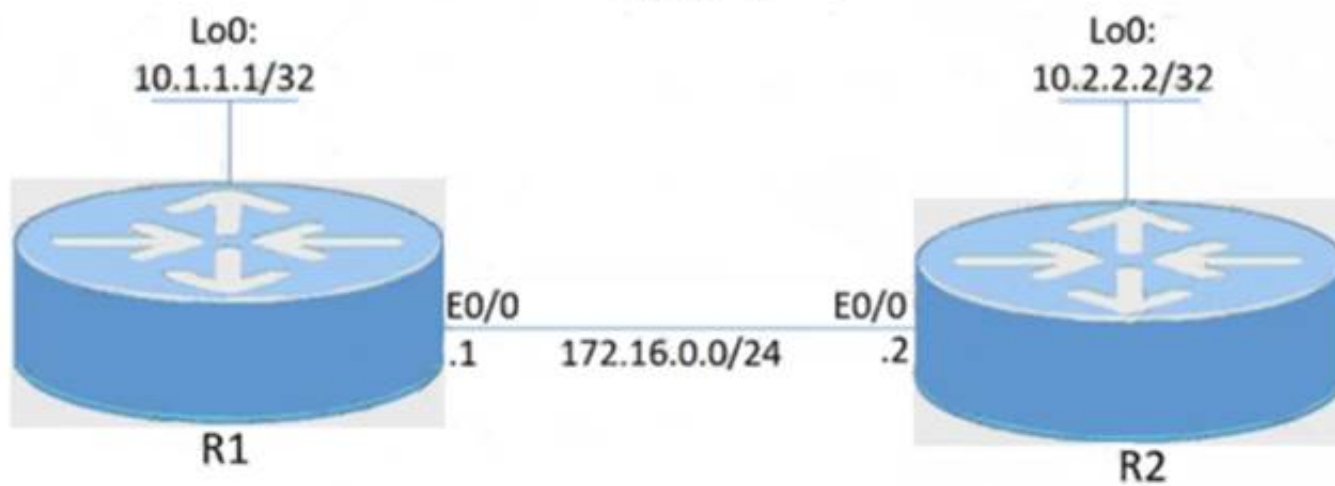
Guidelines



This is a lab item in which tasks will be performed on virtual devices.

- Refer to the Tasks tab to view the tasks for this lab item.
- Refer to the Topology tab to access the device console(s) and perform the tasks.
- Console access is available for all required devices by clicking the device icon or using the tab(s) above the console window.
- All necessary preconfigurations have been applied.
- Do not change the enable password or hostname for any device.
- Save your configurations to NVRAM before moving to the next item.
- Click Next at the bottom of the screen to submit this lab and move to the next question.
- When Next is clicked, the lab closes and cannot be reopened. Topology

## OSPF Process ID 10 Area 0



### Tasks

Configure and verify the OSPF neighbor adjacency between R1 and R2 in OSPF area 0 according to the topology to achieve these goals:

- \* 1. Establish R1 and R2 OSPF adjacency. All interfaces must be advertised in OSPF by using the OSPF interface command method. Use Loopback0 as the OSPF ID.
- \* 2. There must be no DR/BDR elections in OSPF Area 0 when establishing the neighbor relationship between R1 and R2. OSPF must not generate the host entries /32 for the adjacent interfaces.
- \* 3. Enable OSPF MD5 Authentication between both routers at the interface level with password C1sc0!.

- A. Mastered
- B. Not Mastered

**Answer:** A

### Explanation:

Here is the solution:

Graphical user interface, text Description automatically generated

```
R1:
Conf t
Router ospf 10
Router-id 10.1.1.1
```

```
interface e0/0
ip ospf 10 area 0
ip ospf network point-to-point
ip ospf message-digest-key 1 md5 C1sc0!.
```

```
int lo0
ip ospf 10 area 0
```

```
R2:
Conf t
Router ospf 10
Router-id 10.2.2.2
```

```
interface e0/0
ip ospf 10 area 0
ip ospf network point-to-point
ip ospf message-digest-key 1 md5 C1sc0!.
```

```
int lo0
ip ospf 10 area 0
```

**NEW QUESTION 12**

Which type of attack is an application attack?

- A. ping of death
- B. ICMP (ping) flood
- C. HTTP flood
- D. SYN flood

**Answer:** C

**NEW QUESTION 17**

Refer to the exhibit.

```
route-map ciscotest permit 10
  match ip address 1
  set local-preference 200
```

An engineer is implementing the BGP attribute on the customer's network to select the preferred path. Only BGP's well-known discretionary attribute must be used. FTP prefixes should not be selected as part of this implementation. Which configuration must the engineer implement to complete the task?

- A. router bgp 100neighbor 10.0.0.1 remote-as 500 neighbor 10.0.0.1 route-map ciscotest in
- B. router bgp 100neighbor 10.0.0.1 remote-as 500 neighbor 10.0.0.1 route-map ciscotest
- C. router bgp 100neighbor 10.0.0.1 remote-as 500neighbor 10.0.0.1 route-map ciscotest both
- D. router bgp 100neighbor 10.0.0.1 remote-as 500 neighbor 10.0.0.1 route-map ciscotest out

**Answer:** A

**NEW QUESTION 20**

While implementing TTL security, an engineer issues the PE(config-router-af)#neighbor 2.2.2.2 ttl-security hops 2 command. After issuing this command, which BGP packets does the PE accept?

- A. from 2.2.2.2, with a TTL of less than 2
- B. to 2.2.2.2, with a TTL of less than 253
- C. from 2.2.2.2, with a TTL of 253 or more
- D. to 2.2.2.2, with a TTL of 2 or more

**Answer:** C

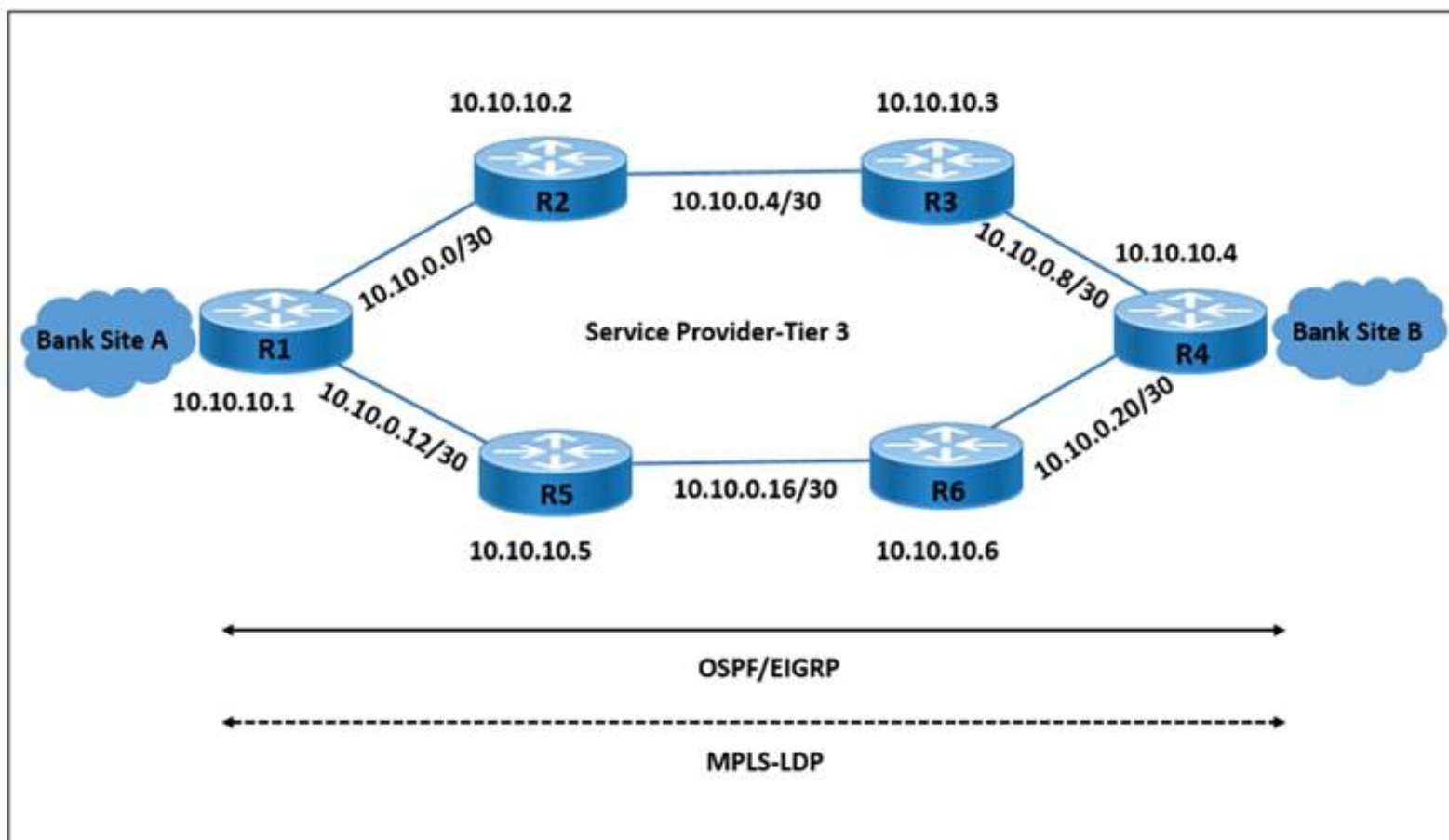
**NEW QUESTION 24**

Refer to the exhibit.



```
R2# show mpls ldp neighbor detail
Peer LDP Ident: 10.10.10.1:0; Local LDP Ident 10.10.10.2:0
TCP connection: 10.10.10.1.646 - 10.10.10.2.56531
Password: not required, none, in use
State: Oper; Msgs sent/rcvd: 18/18; Downstream; Last TIB rev sent 28
Up time: 00:01:08; UID: 3; Peer Id 2;
LDP discovery sources:
  GigabitEthernet2/0; Src IP addr: 10.0.0.1
    holdtime: 15000 ms, hello interval: 5000 ms
Addresses bound to peer LDP Ident:
  10.0.0.13 10.10.10.1 10.0.0.1
Peer holdtime: 180000 ms; KA interval: 60000 ms; Peer state: estab
Clients: Dir Adj Client
LDP Session Protection enabled, state: Incomplete
  duration: 86400 seconds

R1# show mpls ldp neighbor detail
Peer LDP Ident: 10.10.10.2:0; Local LDP Ident 10.10.10.1:0
TCP connection: 10.10.10.2.56531 - 10.10.10.1.646
Password: not required, none, in use
State: Oper; Msgs sent/rcvd: 19/19; Downstream; Last TIB rev sent 30
Up time: 00:02:27; UID: 2; Peer Id 1;
LDP discovery sources:
  GigabitEthernet2/0; Src IP addr: 10.0.0.2
    holdtime: 15000 ms, hello interval: 5000 ms
Addresses bound to peer LDP Ident:
  10.10.10.2 10.0.0.5 10.0.0.2 10.0.0.25
Peer holdtime: 180000 ms; KA interval: 60000 ms; Peer state: estab
```



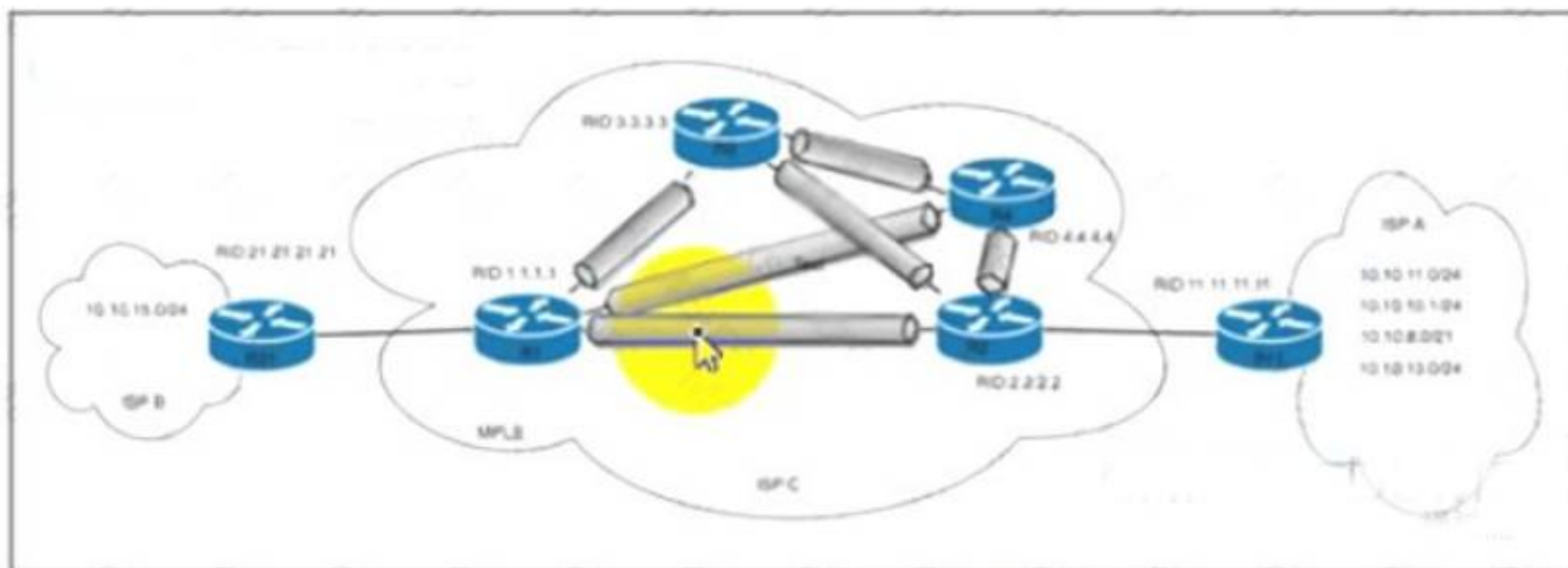
LDP peering between routers R1 and R2 is dropped when the link between R1 and R2 is taken offline. However, LDP peering between R2 and R3 stays up when the link between R2 and R3 is taken offline. Which action allows MPLS traffic forwarding to continue normally if the link between R1 and R2 goes down?

- A. Enable IGP and LDP Synchronization on R1.
- B. Implement LDP Session Protection on R1.
- C. Enable IGP and LDP Synchronization on R2.
- D. Implement LDP Session Protection on R2.

**Answer: B**

#### NEW QUESTION 25

Refer to the exhibit



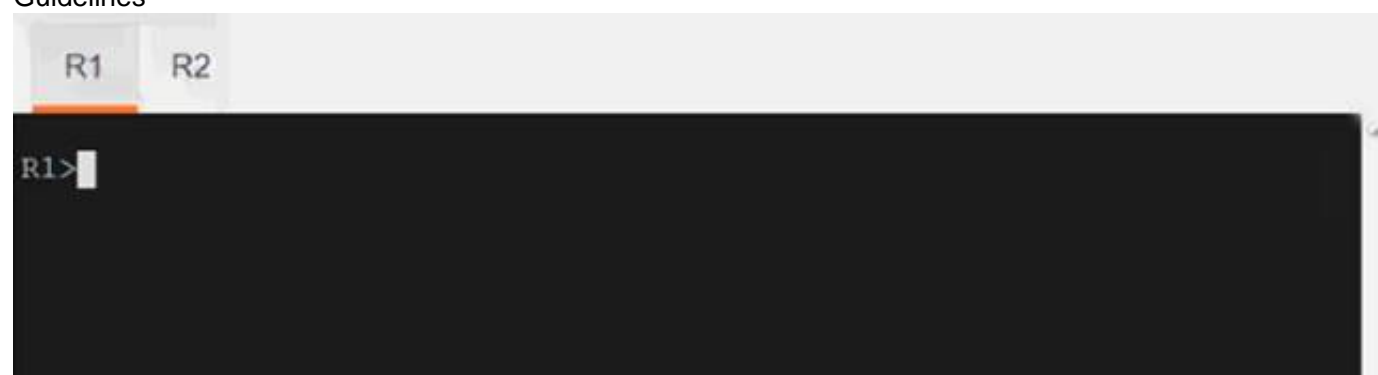
An engineer at ISP C is configuring a new interconnection with ISPs A and B using the BGP protocol. After the initial configuration, the engineer noticed high memory usage and an abnormally large LIB table on router R2. Which two actions must the engineer take on R2 to minimize memory usage? (Choose two.)

- A. Configure Extended ACL 101 with accepted prefixes.
- B. Configure the mpls ldp neighbor 11.11.11.11 labels accept1 command.
- C. Configure Standard ACL 1 with accepted prefixes.
- D. Configure the mpls ldp neighbor 1.1.1.1 labels accept 101 command.
- E. Configure the mpls ldp neighbor 21.21.21.21 labels accept 101 command.

**Answer:** BC

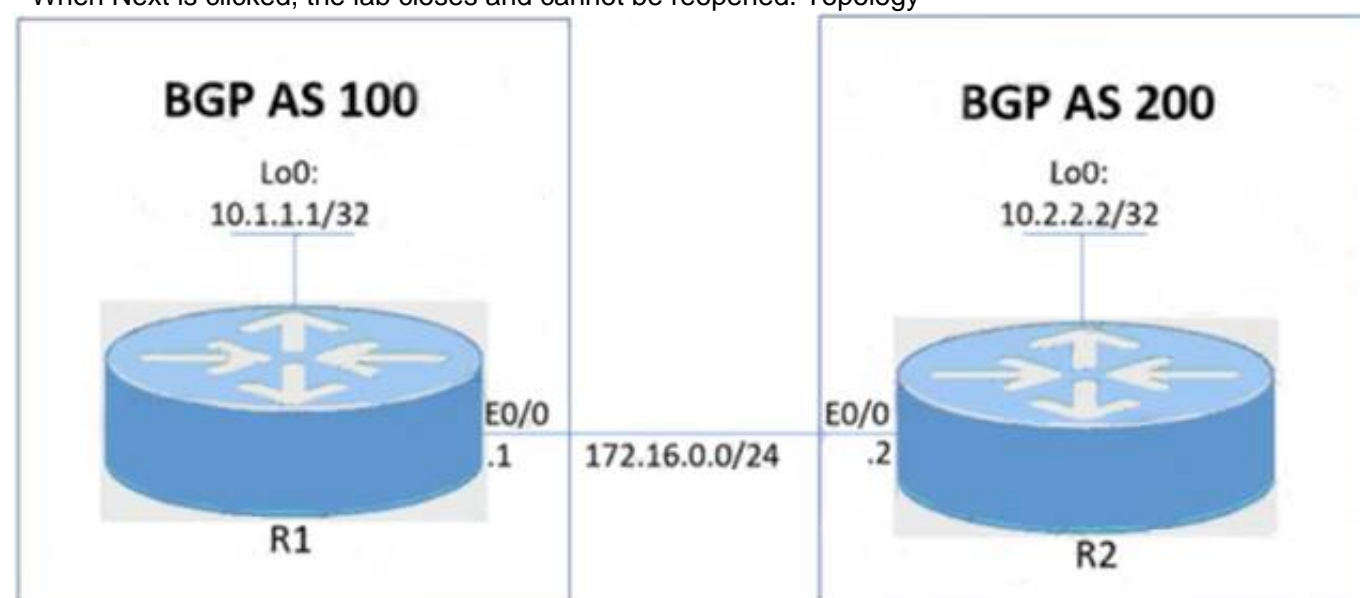
## NEW QUESTION 28

Guidelines



This is a lab item in which tasks will be performed on virtual devices.

- Refer to the Tasks tab to view the tasks for this lab item.
- Refer to the Topology tab to access the device console(s) and perform the tasks.
- Console access is available for all required devices by clicking the device icon or using the tab(s) above the console window.
- All necessary preconfigurations have been applied.
- Do not change the enable password or hostname for any device.
- Save your configurations to NVRAM before moving to the next item.
- Click Next at the bottom of the screen to submit this lab and move to the next question.
- When Next is clicked, the lab closes and cannot be reopened. Topology



Tasks

R1 and R2 are having issues forming an eBGP neighbor relationship. Troubleshoot and resolve the issue to achieve these goals:

- \* 1. Configure R1 and R2 to form a BGP neighborhood using their Loopback interfaces.
- \* 2. Form the neighbor relationship using a BGP multihop mechanism. Use minimal values to solve the issue.

- A. Mastered
- B. Not Mastered

**Answer:** A

**Explanation:**

Here is the solution:

Text Description automatically generated

R1:

conf t

ip route 10.2.2.2 255.255.255.255 172.16.0.2

router bgp 100

neighbor 10.2.2.2 remote-as 200

neighbor 10.2.2.2 update-source lo0

neighbor 10.2.2.2 disable-connected-check

neighbor 10.2.2.2 ebgp-multihop 2

address-family ipv4 unicast

neighbor 10.2.2.2 activate

do copy running-config startup-config

R2:

conf t

ip route 10.1.1.1 255.255.255.255 172.16.0.1

router bgp 200

neighbor 10.1.1.1 remote-as 100

neighbor 10.1.1.1 update-source lo0

neighbor 10.1.1.1 disable-connected-check

neighbor 10.1.1.1 ebgp-multihop 2

address-family ipv4 unicast

neighbor 10.1.1.1 activate

do copy running-config startup-config

#### NEW QUESTION 32

How is RSVP used with MPLS traffic engineering tunnels?

- A. It assigns a tag to a packet as it travels through the tunnel.
- B. It removes and reassigns an MPLS label when the packet enters the tunnel.
- C. It reduces the CPU burden when a packet travels through the tunnel.
- D. It reserves bandwidth along the path of the tunnel.

**Answer:** C

#### NEW QUESTION 36

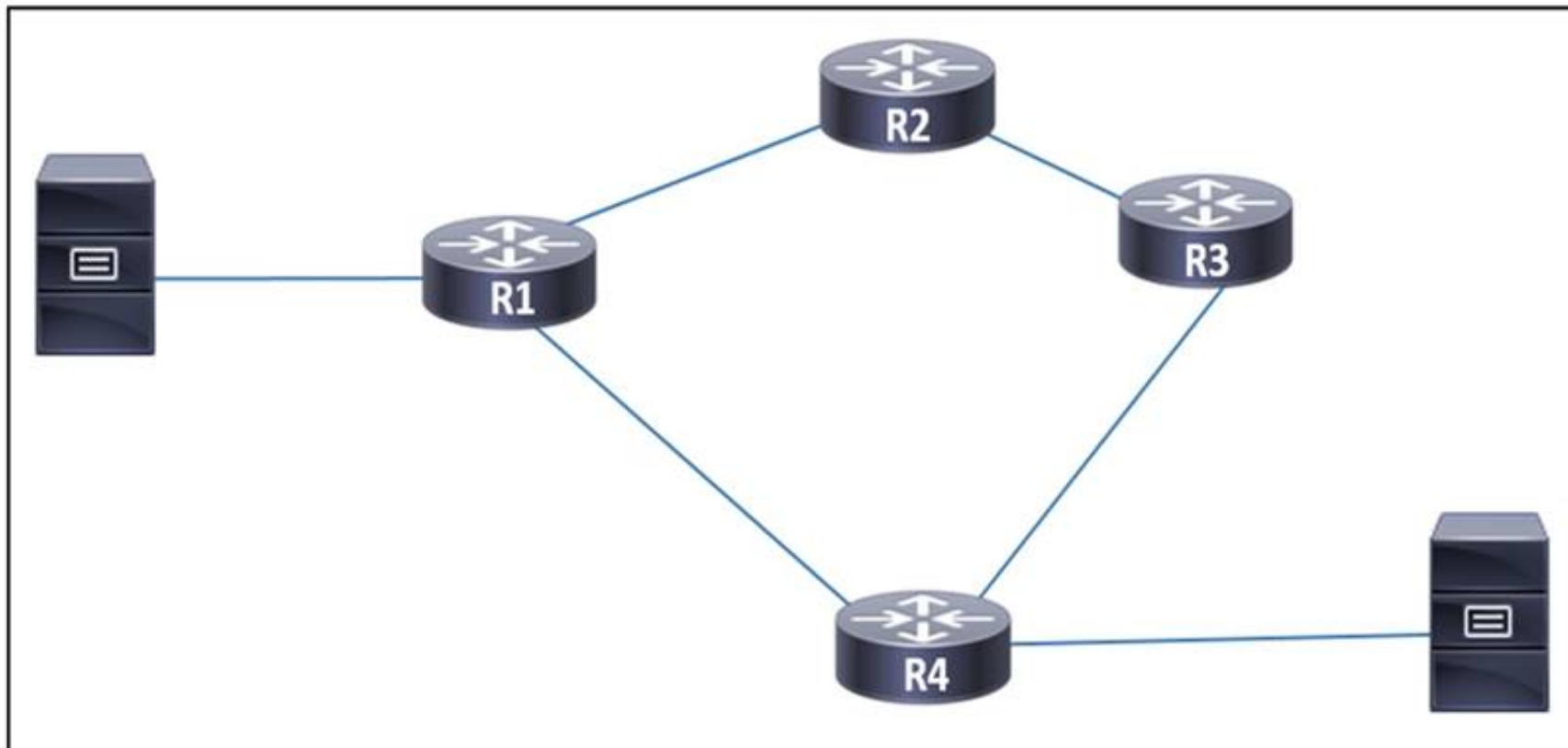
An engineer is moving all of an organization's Cisco IOS XE BGP routers to the address-family identifier format. Which command should be used to perform this upgrade quickly with the minimum service disruption?

- A. vrf upgrade-cli
- B. bgp upgrade-cli
- C. address-family ipv4
- D. ip bgp-community new-format

**Answer:** B

#### NEW QUESTION 39

Refer to the exhibit.



A network engineer observed congestion between routers R1 and R4, which are connected on a point-to-point link. Two servers that reside on networks on R1 and R4 generate heavy traffic between them with most traffic going from R4 to R1. To improve overall performance, the engineer wants to drop inbound packets that exceed a configured threshold, without disrupting traffic that passes from R4 to R3. Which action must the engineer take to resolve the issue?

- A. Implement traffic policing to drop packets that exceed the given threshold.
- B. Implement FIFO to queue excess traffic for transmission when bandwidth is available.
- C. Implement traffic shaping to drop excess packets.
- D. Implement a service policy in the outbound direction on each interface on the link to tag traffic exiting each router.

**Answer:** A

#### NEW QUESTION 44

Which two tasks must you perform when you implement LDP NSF on your network? (Choose two.)

- A. Enable NSF for EIGRP
- B. Enable NSF for the link-state routing protocol that is in use on the network.
- C. Disable Cisco Express Forwarding
- D. Implement direct connections for LDP peers
- E. Enable NSF for BGP

**Answer:** BE

#### NEW QUESTION 48

Refer to the exhibit:

```
snmp-server host 192.168.1.1 version 2c public
```

A network administrator wants to enhance the security for SNMP for this configuration. Which action can the network administrator implement?

- A. Re-configure to use SNMPv2 with MD5 authentication
- B. Add a community string to the existing entry
- C. Re-configure to use SNMPv3.
- D. Maintain the configuration but switch to an encrypted password for device access through SSH

**Answer:** C

#### NEW QUESTION 49

After you analyze your network environment, you decide to implement a full separation model for Internet access and MPLS L3VPN services. For which reason do you make this decision?

- A. It enables you to choose whether to separate or centralize each individual service.
- B. It is easier to manage a system in which services are mixed
- C. It requires only one edge router
- D. It enables EGP and IGP to operate independently

**Answer:** D

#### NEW QUESTION 51

Drag and drop the technologies from the left onto the correct definitions on the right.



DWDM	required for routes and switches to have DWDM and ITU-T G.709 implemented
ROADM	used to amplify an optical signal
IPoDWDM	used to drop certain lambdas within a DWDM ring at a specific location
EDFA	increases bandwidth over a single fiber by using different wavelengths

- A. Mastered
- B. Not Mastered

**Answer:** A

**Explanation:**

DWDM	IPoDWDM
ROADM	EDFA
IPoDWDM	ROADM
EDFA	DWDM

#### NEW QUESTION 55

Refer to the exhibit.

```
POST
https://apic-ip-address/api/mo/uni.xml
<?xml version="1.0" encoding="UTF-8"?>
<!-- api/policymgr/mo/uni.xml -->
<polUni>
  <infralnfra>
    <!-- Static VLAN range -->
    <fvnsVlanInstP name="inband" allocMode="static">
      <fvnsEncapBlk name="encap" from="vlan-5" to="vlan-10"/>
    </fvnsVlanInstP>
  </infralnfra>
</polUni>
```

What does the script configure?

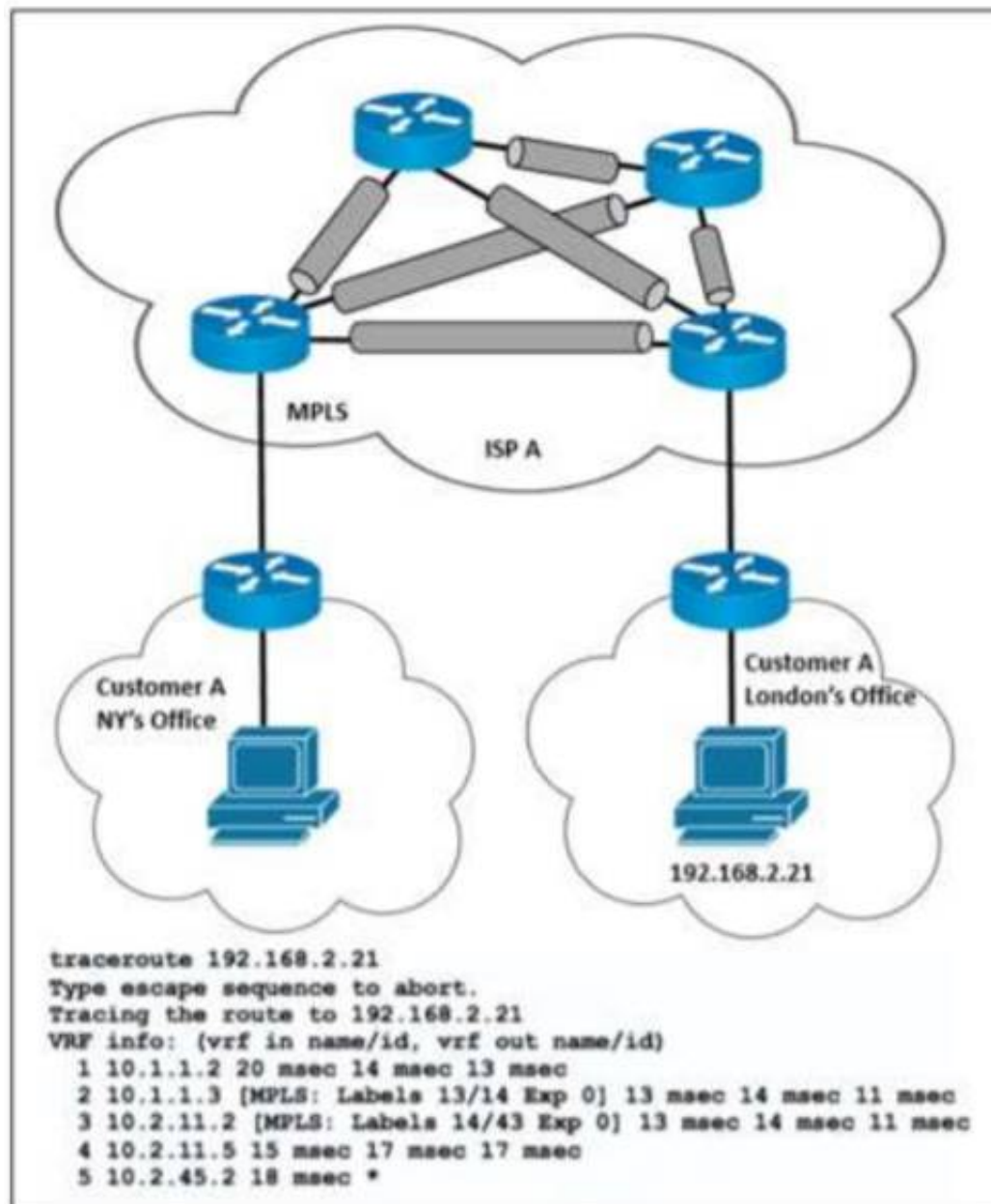
- A. a VLAN namespace
- B. selectors for the in-band management
- C. a physical domain
- D. a static VLAN

**Answer:** D

#### NEW QUESTION 57

Refer to the exhibit.





ISP A provides MPLS L3VPN service to customer A with BGP as the external routing protocol. Customer A has just opened a new branch office in London and requested the service provider to implement lossless service between its two offices. The LDP is enabled over the MPLS backbone and label exchange is working normally. Which action must the ISP engineering team take to enable the service?

- A. Configure LDP and redistribute the route from EIGRP.
- B. Configure BGP address family VPNv4.
- C. Configure IGP and redistribute the route from BGP.
- D. Configure IGP LDP synchronization

**Answer: D**

#### NEW QUESTION 61

How much must the MTU be increased when configuring the 802.1q VLAN tag?

- A. 2 bytes
- B. 4 bytes
- C. 8 bytes
- D. 12 bytes

**Answer: B**

#### NEW QUESTION 64

Refer to the exhibit.

```

router bgp 65515
 aggregate-address 192.168.0.0 255.255.0.0 summary-only as-set
  
```

An engineer configured BGP summarization on a customer's network. Which route is advertised to BGP peers?

- A. A.-192.0.0.0/16
- B. 192.168.0.0/16
- C. 192.168.1.0/24
- D. 192.168.0.5/30

**Answer: B**

#### NEW QUESTION 69

Refer to the exhibit.

```
R10(config)#interface G0/1
R10(config-if)#ip address 172.16.0.1 255.255.255.0
R10(config-if)#ip ospf 1 area 0
R10(config-if)#ip ospf multi-area 10
R10(config-if)#ip ospf multi-area 10 cost 5
```

A network engineer is implementing OSPF multiarea. Which command on interface G0/1 resolves adjacency issues in the new area?

- A. ip ospf network broadcast
- B. ip ospf network non-broadcast
- C. ip ospf network point-to-multipoint
- D. ip ospf network point-to-point

**Answer:** D

**Explanation:**

[https://www.cisco.com/c/en/us/td/docs/ios-xml/ios/iproute\\_ospf/configuration/xr-16/iro-xe-16-book/iro-multi-ar](https://www.cisco.com/c/en/us/td/docs/ios-xml/ios/iproute_ospf/configuration/xr-16/iro-xe-16-book/iro-multi-ar)

**NEW QUESTION 74**

Refer to the exhibit

```
Sep 30 03:12:33: ISIS-Adj: Rec serial IIH from *HDLC* (Serial1/1), cir type L1L2
Sep 30 03:12:33: ISIS-Adj: rcvd state DOWN, old state UP, new state INIT
Sep 30 03:12:33: ISIS-Adj: Action = GOING DOWN
Sep 30 03:12:33: %CLNS-5-ADJCHANGE: ISIS: Adjacency to R1 (Serial1/1) Down, nes
Sep 30 03:12:33: ISIS-Adj: L2 adj count 0
Sep 30 03:12:33: ISIS-Adj: Sending serial IIH on Serial1/1, length 1699
Sep 30 03:12:41: ISIS-Adj: Rec serial IIH from *HDLC* (Serial1/1), cir type L1L2
Sep 30 03:12:41: ISIS-Adj: rcvd state DOWN, old state DOWN, new state INIT
Sep 30 03:12:41: ISIS-Adj: Action = GOING UP, new type = L2
Sep 30 03:12:41: ISIS-Adj: New serial adjacency
Sep 30 03:12:41: ISIS-Adj: Sending serial IIH on Serial1/1, length 1699
Sep 30 03:12:47: ISIS-Adj: Rec serial IIH from *HDLC* (Serial1/1), cir type L1L2
Sep 30 03:12:47: ISIS-Adj: rcvd state DOWN, old state INIT, new state INIT
Sep 30 03:12:47: ISIS-Adj: Action = GOING UP, new type = L2
Sep 30 03:12:47: ISIS-Adj: Sending serial IIH on Serial1/1, length 1699
Sep 30 03:12:47: ISIS-Adj: Sending serial IIH on Serial1/1, length 1699
```

Routers R1 and R2 are connected via a serial link and use the IS-IS routing protocol for route exchange. After a configuration change on R2, IS-IS connectivity is interrupted. A network engineer confirmed that the interfaces are in the UP state and connectivity exists between the two routers. Which two actions must the engineer perform to resolve the problem? (Choose two.)

- A. Disable padding for hello packets under the serial interface on R2 DUMPS
- B. Change the hello interface timer to 10 seconds on R1.
- C. Change the MTU to 1500 bytes on R2.
- D. Enable hello packet padding globally on R1.
- E. Change R2 to an IS-IS Level 1 router.

**Answer:** CE

**NEW QUESTION 78**

Simulation1

Implementing and Operating Cisco Service Provider Network
Time Remaining

Comment

Guidelines
**Topology**
Tasks

### IS-IS Multi-Area Topology

R1 R2 R3

350-701

```

R1>enabler1
Translating "enabler1"...domain server (255.255.255.255)
(255.255.255.255)
Translating "enabler1"...domain server (255.255.255.255)
Translating "enabler1"...domain server (255.255.255.255)
Translating "enabler1"...domain server (255.255.255.255)
% Bad IP address or host name
Translating "enabler1"...domain server (255.255.255.255)
% Unknown command or computer name, or unable to find computer address
R1>

```

Guidelines
**Topology**
Tasks

### Guidelines

This is a lab item in which tasks will be performed on virtual devices.

- Refer to the **Tasks** tab to view the tasks for this lab item.
- Refer to the **Topology** tab to access the device console(s) and perform the tasks.
- Console access is available for all required devices by clicking the device icon or using the tab(s) above the console window.
- All necessary preconfigurations have been applied.
- Do not change the enable password or hostname for any device.
- Save your configurations** to NVRAM before moving to the next item.
- Click **Next** at the bottom of the screen to submit this lab and move to the next question.
- When **Next** is clicked, the lab closes and cannot be reopened.

R1 R2 R3

R3>

Guidelines
Topology
**Tasks**

Configure the IS-IS routing protocol for R1, R2, and R3 according to the topology to achieve these goals:

- Enable IS-IS routing protocol parameters:
  - R1: Routing area tag: 1, Net: 49.0001.0010.0001.0101.00
  - R2: Routing area tag: 2, Net: 49.0001.0010.0002.0202.00
  - R3: Routing area tag: 3, Net: 49.0001.0010.0003.0303.00
- Configure IS-IS IPv4 and IPv6:
  - Only Level 1 adjacency for: R2 and R3 links
  - Only Level 2 adjacency for: R1 and R2 links
  - Only Level 2 adjacency for: R1 and R3 links.
- Configure CLNS Domain and Area password **C1sc0!** for the authentication of all IS-IS adjacency links on R1, R2, and R3. Use the clear text ISIS authentication mechanism for this task.

R1 R2 R3

R1>enabler1
Translating "enabler1"...domain server (255.255.255.255)
(255.255.255.255)
Translating "enabler1"...domain server (255.255.255.255)
Translating "enabler1"...domain server (255.255.255.255)
Translating "enabler1"...domain server (255.255.255.255)
% Bad IP address or host name
Translating "enabler1"...domain server (255.255.255.255)
% Unknown command or computer name, or unable to find computer address
R1>

A. Mastered  
B. Not Mastered



Answer: A

Explanation:

SOLUTION:R1  
Config t router isis 1  
net 49.0001.0010.0001.0101.00  
area-password C1sc0! int et0/0  
ip router isis 1  
isis authen mode text level-2 isis circuit-type level-2  
isis tag 1 int et1/0  
ip router isis 1  
isis authen mode text level-2 isis circuit-type level-2  
isis tag 1 R2  
router isis 2  
net 49.0001.0010.0002.0202.00  
area-password C1sc0! int et0/0  
ip router isis 2  
isis authen mode text level-2 isis circuit-type level-2  
isis tag 2 int et1/0  
ip router isis 2  
isis authen mode text level-1 isis circuit-type level-1  
isis tag 2 R3  
router isis 3  
net 49.0001.0010.0003.0303.00  
area-password C1sc0! int et0/0  
ip router isis 3  
isis authen mode text level-1 isis circuit-type level-1  
isis tag 3 int et1/0  
ip router isis 3  
isis authen mode text level-2 isis circuit-type level-2  
isis tag 3  
R1 Verification:



R1  
Config t  
Ipv6 unicast-routing Router isis 1  
Metric-style wide  
Address-family ipv6 unicast Multi-topology  
Int loop0  
Ip router isis 1 Ipv6 router isis 1 Isis tag 1  
Int et0/0  
Ipv6 router isis 1 Int et1/0  
Ipv6 router isis 1 R2  
Config t  
Ipv6 unicast-routing Router isis 2  
Metric-style wide  
Address-family ipv6 unicast Multi-topology  
Int loop0  
Ip router isis 2 Ipv6 router isis 2 Isis tag 2  
Int et0/0  
Ipv6 router isis 2 Int et1/0  
Ipv6 router isis 2 R3  
Config t  
Ipv6 unicast-routing Router isis 3  
Metric-style wide  
Address-family ipv6 unicast Multi-topology  
Int loop0  
Ip router isis 3 Ipv6 router isis 3 Isis tag 3  
Int et0/0  
Ipv6 router isis 3 Int et1/0  
Ipv6 router isis 3

```
R1#show clns neighbors

Tag 1:
System Id      Interface      SNPA              State  Holdtime  Type
Protocol
R2              Et0/0          aabb.cc00.0200    Up     9          L2
IS-IS
R3              Et1/0          aabb.cc00.0301    Up     7          L2
IS-IS

Tag null:
```

R1 Ipv6 Verification:

```
- L
R1#sh ipv6 route
IPv6 Routing Table - default - 8 entries
Codes: C - Connected, L - Local, S - Static, U - Per-user Static route
        B - BGP, HA - Home Agent, MR - Mobile Router, R - RIP
        H - NHRP, I1 - ISIS L1, I2 - ISIS L2, IA - ISIS interarea
        IS - ISIS summary, D - EIGRP, EX - EIGRP external, NM - NEMO
        ND - ND Default, NDp - ND Prefix, DCE - Destination, NDr - Redir
        ect
        RL - RPL, O - OSPF Intra, OI - OSPF Inter, OE1 - OSPF ext 1
        OE2 - OSPF ext 2, ON1 - OSPF NSSA ext 1, ON2 - OSPF NSSA ext 2
        la - LISP alt, lr - LISP site-registrations, ld - LISP dyn-eid
        lA - LISP away, a - Application
C   2000:CC13:CC13:2020::/64 [0/0]
    via Ethernet0/0, directly connected
L   2000:CC13:CC13:2020::1/128 [0/0]
    via Ethernet0/0, receive
I2  2000:CC13:CC13:2021::/64 [115/20]
    via FE80::A8BB:CCFF:FE00:200, Ethernet0/0
C   2000:CC13:CC13:2030::/64 [0/0]
    via Ethernet1/0, directly connected
L   2000:CC13:CC13:2030::1/128 [0/0]
    via Ethernet1/0, receive
I2  2000:CC13:CC13:2031::/64 [115/20]
    via FE80::A8BB:CCFF:FE00:301, Ethernet1/0
I2  2000:CC13:CC13:2040::/64 [115/20]
    via FE80::A8BB:CCFF:FE00:301, Ethernet1/0
L   FF00::/8 [0/0]
    via Null0, receive
R1#
```

R1  
Copy run start R2  
Copy run start R3  
Copy run start

NEW QUESTION 80

Which protocol is used for communication between the PCE and PCC?

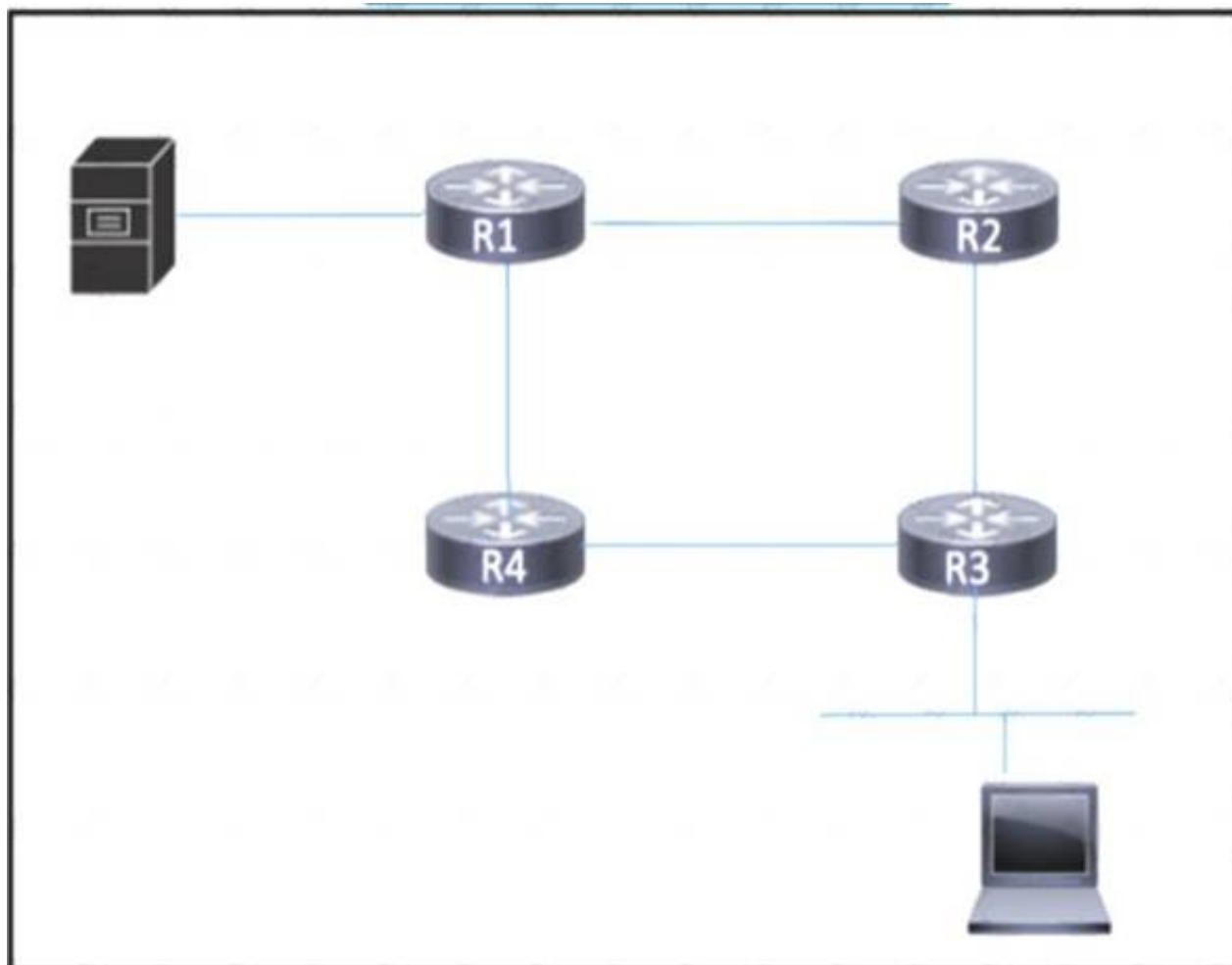
- A. ICMP
- B. PCEP
- C. CEF
- D. POP

Answer: B

NEW QUESTION 83

Refer to the exhibit.





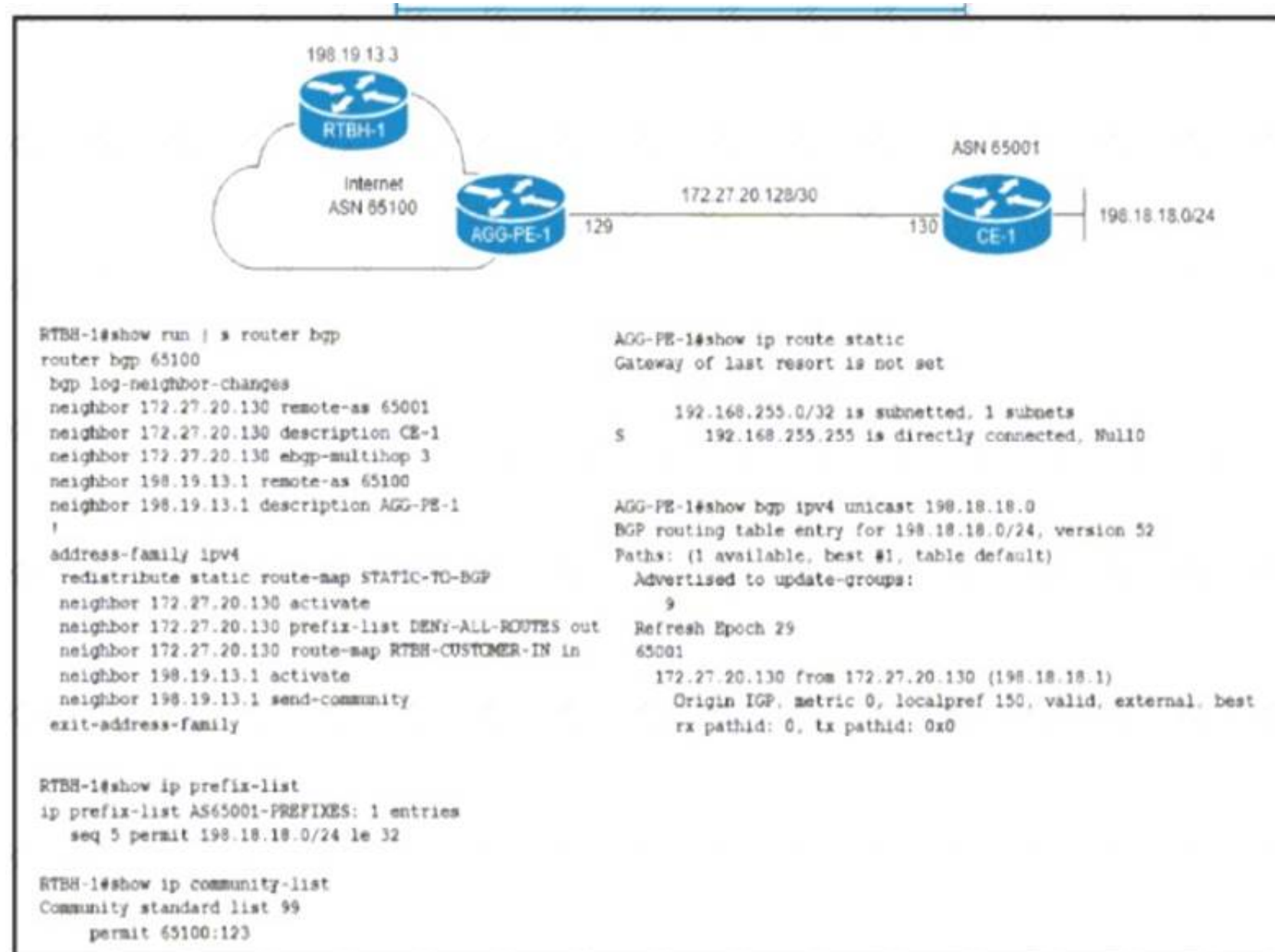
A host connected to R3 must connect with a server on R1 that provides critical, time-sensitive data. Traffic between the host and server must always be given bandwidth to traverse the links when they are congested, with other traffic being dropped. How must the network engineer implement a QoS strategy with classification to ensure that the traffic is given the appropriate bandwidth?

- A. Implement FIFO to guarantee that the server traffic is sent first while other traffic is queued.
- B. Implement policing to rate-limit noncritical traffic that exceeds designated thresholds.
- C. Implement traffic shaping to delay noncritical traffic when the link is congested.
- D. Implement strict priority to guarantee bandwidth for the server traffic.

**Answer: D**

#### NEW QUESTION 86

Refer to the exhibit.



ISP ASN 65100 provides Internet services to router CE-1 and receives customer prefix 198.18.18.0/24 via eBGP. An administrator for the ISP is now provisioning RTBH services to provide on-demand data-plane security for the customer's IP space. Which route-map configuration must the administrator apply to router RTBH-1 to complete the implementation of RTBH services to CE-1?

- A. route-map RTBH-CUSTOMER-IN permit 10 description AS65001match ip address prefix-list AS65001-PREFIXESmatch community 99set local-preference 200set community no-export additive set ip next-hop 192.168.255.255route-map RTBH-CUSTOMER-IN deny 65535 description DEFAULT DENY
- B. route-map RTBH-CUSTOMER-IN permit 10 description AS65001match ip address prefix-list AS65001-PREFIXES match community 99set local-preference 200set community local-as additive set ip next-hop 192.168.255.255route-map RTBH-CUSTOMER-IN deny 65535 description DEFAULT DENY
- C. route-map RTBH-CUSTOMER-IN permit 10 description AS65001match ip address prefixlist AS65001-PREFIXES match community 99set local-preference 200set community no-advertise additive set ip next-hop local-addressroute-map RTBH-CUSTOMER-IN deny 65535 description DEFAULT DENY
- D. route-map RTBH-CUSTOMER-IN permit 10 description AS65001match ip address prefix-list AS65001-PREFIXES match community 99set local-preference 200set community no-advertise additive set ip next-hop 192.168.255.255route-map RTBH-CUSTOMER-IN deny 65535 description DEFAULT DENY

**Answer: A**

#### NEW QUESTION 91

Refer to the exhibit:

```
R1:
!
interface FastEthernet0/0
  ip address 10.1.12.1 255.255.255.0
  duplex full
!
router ospf 1
  network 0.0.0.0 255.255.255.255 area 0
R2:
!
interface FastEthernet0/0
  ip address 10.1.12.2 255.255.255.252
  duplex full
!
router ospf 1
  network 0.0.0.0 255.255.255.255 area 0
```

R1 and R2 are directly connected with Fast Ethernet interfaces and have the above configuration applied OSPF adjacency is not formed. When the debug ip ospf hello command is issued on R1. these log messages are seen.

```
*Mar 6 21:57:33.051: OSPF-1 HELLO Fa0/0: Mismatched hello parameters from 10.1.12.2
*Mar 6 21:57:33.051: OSPF-1 HELLO Fa0/0: Dead R 40 C 40, Hello R 10 C 10 Mask R
255.255.255.252 C 255.255.255.0
```

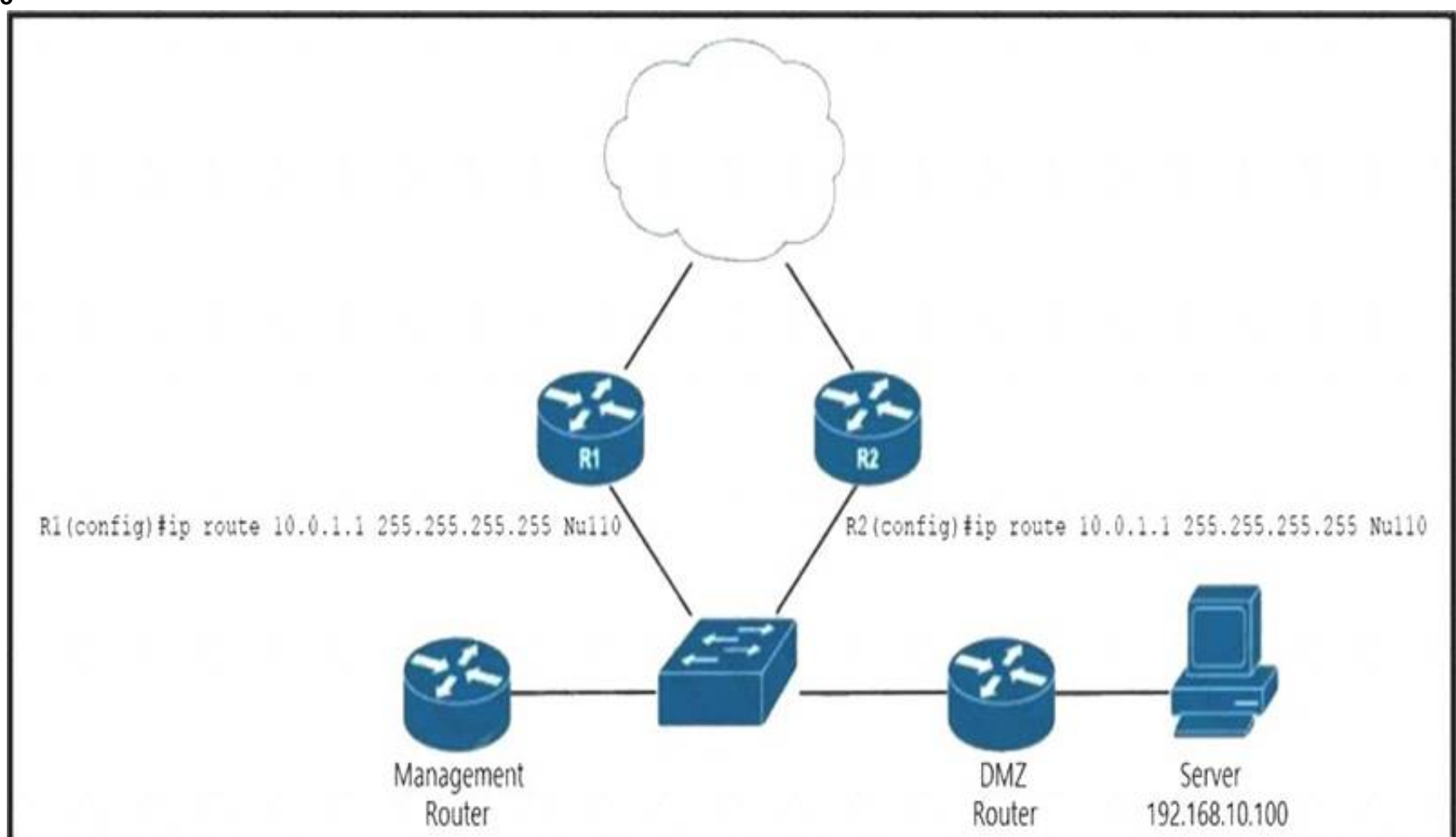
Which command can be configured on routers R1 and R2 on f0/0 interfaces to form OSPF adjacency?

- A. ip ospf network non-broadcast
- B. ip ospf network point-to- multipoint non-broadcast
- C. ip ospf network point-to-point
- D. ip ospf network broadcast

**Answer: C**

#### NEW QUESTION 93

Refer to the exhibit.



router(config)# route-map blackhole-trigger router(config-route-map)# match tag 777 router(config-route-map)# set ip next-hop 10.0.1.1 router(config-route-map)#

set origin igp router(config-route-map)# set community no-export

EIGRP is running across the core to exchange internal routes, and each router maintains iBGP adjacency with the other routers on the network. An operator has configured static routes on the edge routers R1 and R2 for IP address 10.0.1.1, which is used as a black hole route as shown. Which configuration should the operator implement to the management router to create a route map that will redistribute tagged static routes into BGP and create a static route to blackhole traffic with tag 777 that is destined to the server at 192.168.10.100?

- A. router(config)# router bgp 55100router(config-router)# redistribute static route-map blackhole-trigger router(config)# ip route 10.0.1.1 255.255.255.255 Null0 tag 777
- B. router(config)# router bgp 55100router(config-router)# redistribute static route-map blackhole-trigger router(config)# ip route 192.168.10.100 255.255.255.255 Null0 tag 777
- C. router(config)# router bgp 55100 router(config-router)# redistribute connectedrouter(config)# ip route 192.168.10.100 255.255.255.255 tag 777
- D. router(config)# router bgp 55100router(config-router)# redistribute connected route-map blackhole-trigger router(config)# ip route 192.168.10.100 255.255.255.255 Null0 tag 777

**Answer: B**

#### NEW QUESTION 98

A network engineer is deploying VPLS configuration between multiple PE routers so that customer's remote offices have end-to-end LAN connectivity. Which additional configuration should the engineer perform on the PE routers to enable the virtual switch instance?

A)

```
interface Vlan 5
xconnect vfi ciscotest
```

B)

```
l2 vfi ciscotest manual
vpn id 100
neighbor 192.168.2.2 encapsulation mpls
neighbor 192.168.3.3 encapsulation mpls
```

C)

```
interface GigEthernet1/1
switchport mode trunk
switchport trunk encap dot1q
switchport trunk allow vlan 2-10
```

D)

```
interface Vlan 100
xconnect vfi ciscotest
ip address 192.168.1.1 255.255.255
```

- A. Option A
- B. Option B
- C. Option C
- D. Option D

**Answer: B**

#### Explanation:

[https://www.cisco.com/c/en/us/td/docs/ios-xml/ios/mp\\_l2\\_vpns/configuration/xs-3s/mp-l2-vpns-xe-3s-book/mp](https://www.cisco.com/c/en/us/td/docs/ios-xml/ios/mp_l2_vpns/configuration/xs-3s/mp-l2-vpns-xe-3s-book/mp)

#### NEW QUESTION 103

Refer to the exhibit.

Router 1:

```
tacacs-server host 192.168.1.2 single-connection
tacacs-server key ciscotest
```

What is the result of this configuration?

- A. Router 1 opens and closes a TCP connection to the TACACS+ server every time a user requires authorization.
- B. Router 1 and the TACACS+ server maintain one open connection between them only when network administrator is accessing the router with password ciscotest.
- C. Router 1 and the TACACS+ server maintain one open connection between them.
- D. Router 1 opens and closes a TCP connection to the TACACS+ server every time a user requires authentication.

**Answer: C**

#### Explanation:

<https://www.ccexpert.us/cisco-secure/configuring-tacacs-on-cisco-ios.html>

single-connection (Optional) Used to specify a single connection. Rather than have the router open and close a TCP connection to the daemon each time it must communicate, the single-connection option maintains a single open connection between the router and the daemon. This is more efficient because it allows the daemon to handle a higher number of TACACS operations.



#### NEW QUESTION 106

What are two factors to consider when implementing NSR High Availability on an MPLS PE router? (Choose two.)

- A. It consumes more memory and CPU resources than NSF
- B. It operates normally without NSR support on the PE peers.
- C. It requires all PE-CE sessions to support NSR
- D. It requires routing protocol extensions
- E. It cannot sync state information across redundant RPs

**Answer:** AB

#### NEW QUESTION 108

Refer to the exhibit.



A network engineer is implementing iBGP and eBGP between AS 600 and AS 500 with these requirements:

- R2 must wait for 30 seconds before sending BGP updates to R5 for multicast traffic.

Which action must be taken on R2 to meet the requirements?

- A. Configure advertisement-interval 30 in address-family ipv4 unicast
- B. Configure advertisement-Interval 30 in address-family Ipv4 multicast
- C. Apply timers bgp 30 in address-family ipv4 unicast
- D. Apply timers bgp 30 in address-family ipv4 multicast.

**Answer:** B

#### NEW QUESTION 110

Which service is a VNF role?

- A. Compute
- B. Network
- C. Firewall
- D. Storage

**Answer:** B

#### NEW QUESTION 111

Which utility can you use to locate MPLS faults?

- A. MPLS traceroute
- B. EEM
- C. MPLS LSP ping
- D. QoS

**Answer:** C

#### NEW QUESTION 114

Refer to the exhibit:

```
R1
router isis
 net 52.0011.0000.0000.0001.00
 is-type level-2

interface gigabitethernet0/1
 ip address 192.168.0.1 255.255.255.0
 ip router isis

R2
router isis
 net 52.0022.0000.0000.0002.00
 is-type level-1

interface gigabitethernet0/1
 ip address 192.168.0.2 255.255.255.0
 ip router isis
```

Which statement about the status of the neighbor relationship between R1 and R2 is true?

- A. The neighbor relationship is down because the two routers are configured with different area types
- B. The neighbor relationship is down because the two routers are in the same subnet.
- C. The neighbor relationship is up because R2 is level 1 and level 2 router.
- D. The neighbor relationship is down because R2 is operating as a Level 1 router and the two routers are in different area

**Answer: D**

#### NEW QUESTION 119

A network administrator is planning a new network with a segment-routing architecture using a distributed control plane. How is routing information distributed on such a network?

- A. Each segment is signaled by a compatible routing protocol, and each segment makes its own steering decisions based on SR policy.
- B. Each segment is signaled by MPLS, and each segment makes steering decisions based on the routing policy pushed by BGP.
- C. Each segment is signaled by an SR controller, but each segment makes its own steering decisions based on SR policy.
- D. Each segment is signaled by an SR controller that makes the steering decisions for each node.

**Answer: D**

#### NEW QUESTION 122

Refer to the exhibit:

```
RP/0/RSP0/CPU0:JFK-PE#show mpls ldp bindings 192.168.10.10/32
Fri Nov 11 21:02:33.124 UTC
192.168.10.10/32, rev 2
  Local binding: label: ImpNull
  Remote bindings: (2 peers)
      Peer                Label
      -----
      10.10.10.2:0         562656
      10.10.10.5:0         378337
```

After implementing a new design for the network, a technician reviews the pictured CLI output as part of the MOP.

Which two statements describe what the technician can ascertain from the ImpNull output? (Choose two.)

- A. Label 0 is used for the prefix displayed but will not be part of the MPLS label stack for packets destined for 192.168.10.10.
- B. Ultimate Hop Popping is in use for the prefix displayed.
- C. Label 0 is used for the prefix displayed and will be part of the MPLS label stack for packets destined for 192.168.10.10
- D. Penultimate Hop Popping is in use for the prefix displayed
- E. Label 3 is in use for the prefix displayed and will be part of the MPLS label stack for packets destined for 192.168.10.10

**Answer: DE**

#### NEW QUESTION 126

What is the purpose of RSVP tear messages?

- A. to notify the tail-end router of resource unavailability on the transit router
- B. to inform the headend router of LSP issues
- C. to reuse router resources for other reservation requests
- D. to confirm successful end-to-end resource allocation

**Answer: C**

#### NEW QUESTION 128

A network administrator is planning a new network with a segment-routing architecture using a distributed control plane. How is routing information distributed on such a network?



- A. Each segment is signalled by an SR controller, but each segment makes its own steering decisions based on SR policy.
- B. Each segment is signalled by MPLS, and each segment makes steering decisions based on the routing policy pushed by BGP.
- C. Each segment is signalled by an SR controller that makes the steering decisions for each node.
- D. Each segment is signalled by a compatible routing protocol and each segment makes its own steering decisions based on SR policy.

**Answer:** D

**Explanation:**

<https://www.cisco.com/c/en/us/support/docs/multiprotocol-label-switching-mpls/mpls/215215-segment-routing->

**NEW QUESTION 133**

Refer the exhibit.



Users on a network connected to router R3 report slow speeds when they connect to the server connected to R2. After analyzing traffic on the network, a network engineer identified congestion on the link between R2 and R3 as the cause. Which QoS service must the engineer implement to drop traffic on the link when it exceeds a configured threshold?

- A. first-in, first-out
- B. traffic shaping
- C. class-based weighted fair queueing
- D. traffic policing

**Answer:** D

**Explanation:**

<https://www.cisco.com/c/en/us/support/docs/quality-of-service-qos/qos-policing/19645-policevsshape.html>

**NEW QUESTION 134**

Which regular expression query modifier function indicates the start of a string?

- A. ^
- B. [^]
- C. +
- D. \$

**Answer:** A

**NEW QUESTION 137**

What are two features of 6RD IPv6 transition mechanism? (Choose two.)

- A. It inserts IPv4 bits into an IPv6 delegated prefix.
- B. It uses a native IPv6-routed network between CE routers and the BR router.
- C. It allows dynamic 1:N translation of IPv6 address.
- D. It uses stateful automatic 6to4 tunnels between CE routers and the BR router.
- E. It uses stateless automatic 6to4 tunnels between CE routers and the BR router.

**Answer:** AE

**NEW QUESTION 138**

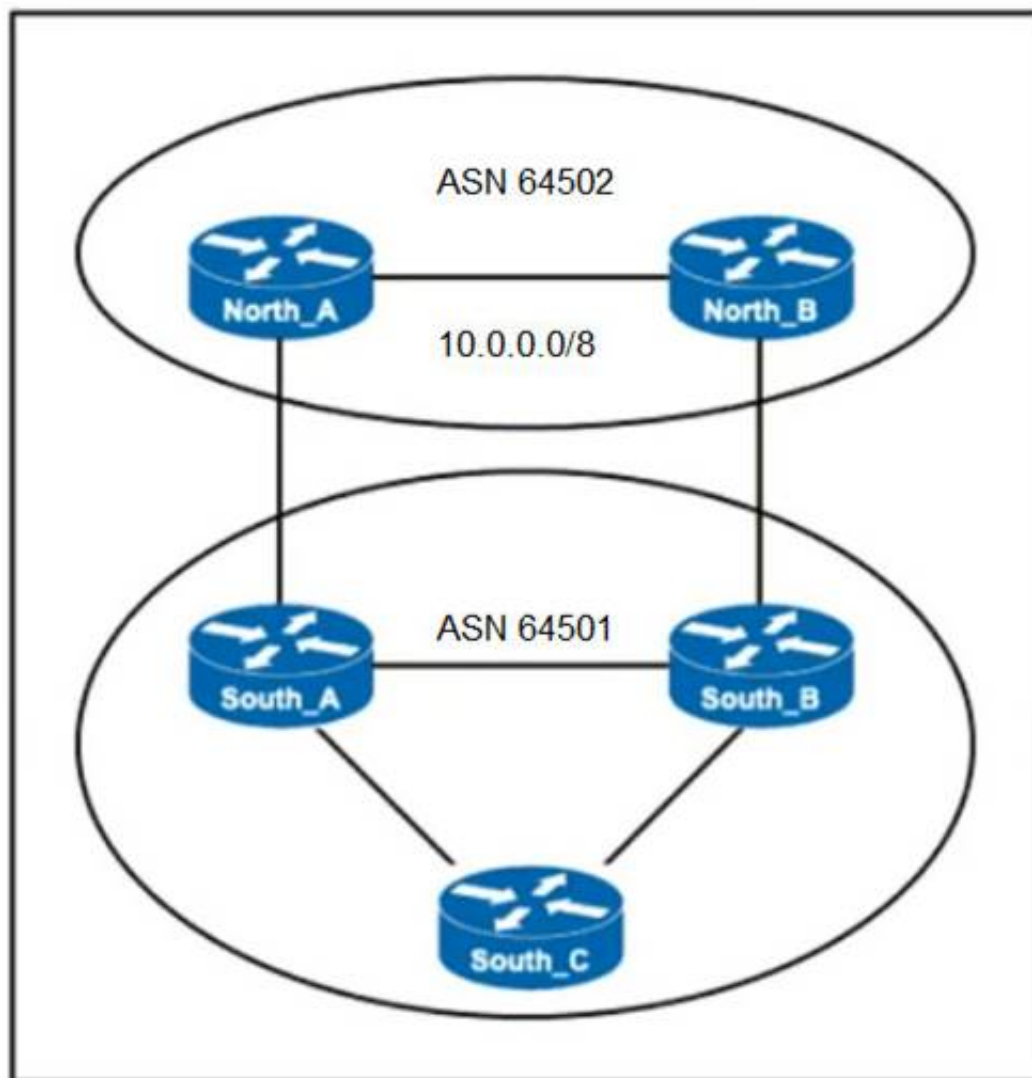
An engineer must implement QoS to prioritize traffic that requires better service throughout the network. The engineer started by configuring a class map to identify the high-priority traffic. Which additional tasks must the engineer perform to implement the new QoS policy?

- A. Attach the class map to a policy map that sets the minimum bandwidth allocated to the classified traffic and designates the action to be taken on the traffic.
- B. Attach the class map to a policy map that designates the action to be taken on the classified traffic and then attach the policy map to an interface using a service policy.
- C. Attach the class map to a policy map within a VRF to segregate the high-priority traffic and then attach the policy map to an interface in another VRF.
- D. Create a route map to manipulate the routes that are entered into the routing table and then attach the route map to an interface using a service policy.

**Answer:** B

**NEW QUESTION 140**

Refer to the exhibit.



ASN 64501 currently reaches the networks under the 10.0.0.0/8 prefix via the North\_B router, which is a slow backup link. The administrator of ASN 64502 wants traffic from ASN 64501 to 10.0.0.0/8 to travel via the primary link North\_A. Which change to the network configuration accomplishes this task?

- A. Set a higher local preference between North\_A and South\_A
- B. Advertise the 10.0.0.0/8 prefix through North\_B and specific subnets through North\_A
- C. Set a Lower Weight value for incoming traffic on North\_A
- D. Set a lower MED between North\_B and South\_B

**Answer: D**

#### NEW QUESTION 143

Refer to the exhibit:

```
class-map WEB
  match protocol http
```

Which statement describes the effect of this configuration?

- A. It applies a service policy to all interfaces remarking HTTP traffic
- B. It creates an ACL named WEB that filters HTTP traffic.
- C. It matches HTTP traffic for use in a policy map
- D. It modifies the default policy map to allow all HTTP traffic through the router

**Answer: C**

#### NEW QUESTION 148

Which statement about TLS is accurate when using RESTCONF to write configurations on network devices'?

- A. It requires certificates for authentication.
- B. It is provided using NGINX acting as a proxy web server
- C. It is used for HTTP and HTTPS requests.
- D. It is not supported on Cisco devices

**Answer: A**

#### NEW QUESTION 151

What is a characteristic of MVPN?

- A. It bypasses the use of MPLS in the service provider core and transmits packets using IP only.
- B. It uses pseudowires to route unicast and broadcast traffic over either a service provider MPLS or IP core.
- C. It allows VRF traffic to use the service provider MPLS VPN to route multicast traffic.
- D. It creates GRE tunnels to route multicast traffic over a service provider IP core.

**Answer: C**

#### NEW QUESTION 156

Guidelines This is a lab item in which tasks will be performed on virtual devices.

- Refer to the Tasks tab to view the tasks for this lab item.
- Refer to the Topology tab to access the device console(s) and perform the tasks.
- Console access is available for all required devices by clicking the device icon or using the tab(s) above the console window.
- All necessary preconfigurations have been applied.
- Do not change the enable password or hostname for any device.
- Save your configurations to NVRAM before moving to the next item.
- Click Next at the bottom of the screen to submit this lab and move to the next question.
- When Next is clicked, the lab closes and cannot be reopened. Topology:

## EBGP Neighbor Adjacency



### Tasks

Configure the BGP routing protocol for R1 and R2 according to the topology to achieve these goals:

- \* 1. Configure EBGP neighbor adjacency for the IPv4 and IPv6 address family between R1 and R2 using Loopback0 IPv4 and IPv6 addresses. All BGP updates must come from the Loopback0 interface as the source. Do not use IGP routing protocols to complete this task.
- \* 2. Configure MD5 Authentication for the EBGP adjacency between R1 and R2. The password is clear text C1sc0!.

- A. Mastered
- B. Not Mastered

**Answer:** A

### Explanation:

Here is the solution:

Text Description automatically generated

**R1:**

conf t

ip route 2.2.2.2 255.255.255.255 192.168.1.2

ip route 2000:cc13:cc13:2::1/128 2000:cc13:cc13:cc13::2

router bgp 65515

neighbor 2000:cc13:cc13:2::1 remote-as 65516

neighbor 2000:cc13:cc13:2::1 update-source lo0

neighbor 2000:cc13:cc13:2::1 disable-connected-check

neighbor 2000:cc13:cc13:2::1 ebgp-multihop 2

neighbor 2000:cc13:cc13:2::1 password C1sc0!.

neighbor 2.2.2.2 remote-as 65516

neighbor 2.2.2.2 update-source lo0

neighbor 2.2.2.2 disable-connected-check

neighbor 2.2.2.2 ebgp-multihop 2

neighbor 2.2.2.2 password C1sc0!.

address-family ipv4 unicast

neighbor 2.2.2.2 activate

address-family ipv6

neighbor 2000:cc13:cc13:2::1 activate

do copy running-config startup-config

**R2:**

conf t

ip route 1.1.1.1 255.255.255.255 192.168.1.1

ip route 2000:cc13:cc13:1::1/128 2000:cc13:cc13:cc13::1

router bgp 65516

neighbor 2000:cc13:cc13:1::1 remote-as 65515

neighbor 2000:cc13:cc13:1::1 update-source lo0

neighbor 2000:cc13:cc13:1::1 disable-connected-check

neighbor 2000:cc13:cc13:1::1 ebgp-multihop 2

neighbor 2000:cc13:cc13:1::1 password C1sc0!.

neighbor 1.1.1.1 remote-as 65515

neighbor 1.1.1.1 update-source lo0

neighbor 1.1.1.1 disable-connected-check

neighbor 1.1.1.1 ebgp-multihop 2

neighbor 1.1.1.1 password C1sc0!.

address-family ipv4 unicast

neighbor 1.1.1.1 activate

**NEW QUESTION 161**

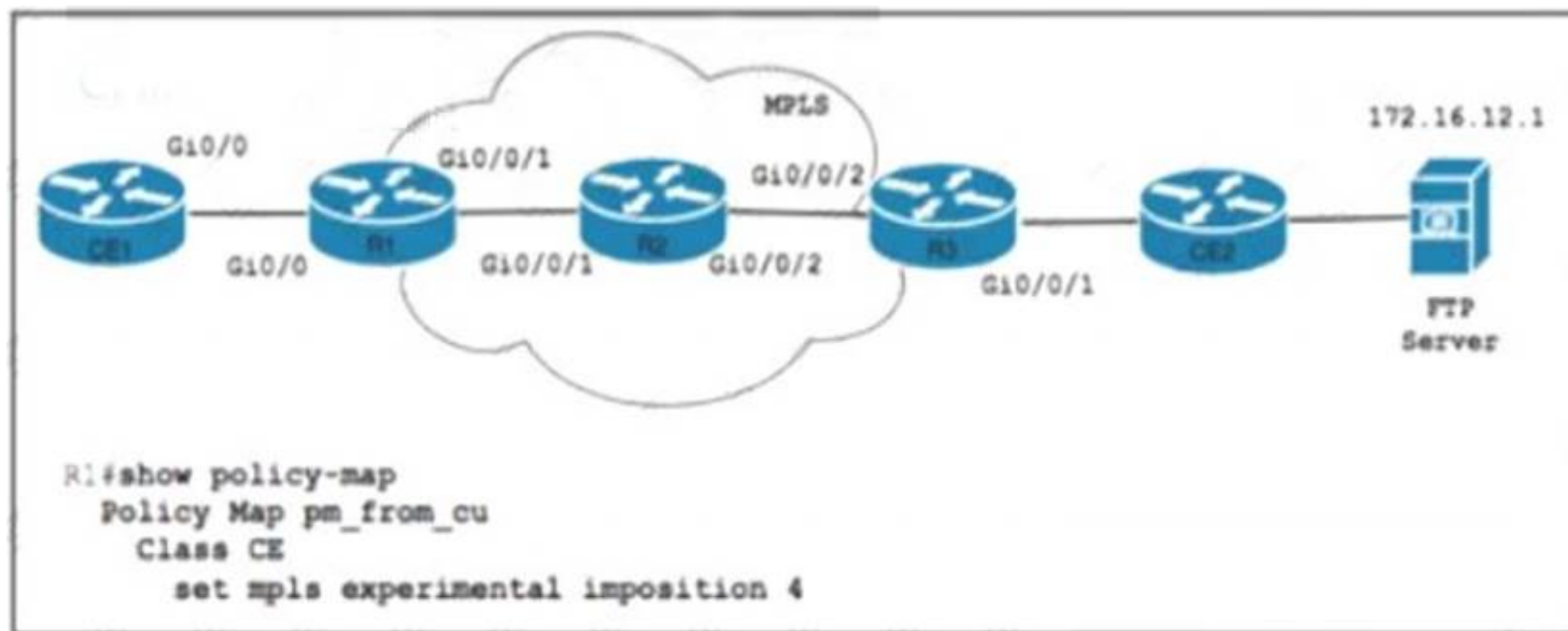
Which two features describe TI-LFA? (Choose two.)

- A. TI-LFA uses PQ or P and Q nodes on the post-convergence path to compute the backup path.
- B. Post-convergence, TI-LFA considers the next-hop neighbor to calculate the backup repair path.
- C. TI-LFA works with point of local repair when the PQ node supports only LDP capability.
- D. Unlike RLFA, TI-LFA works without the PQ node and provides double segment failure protection.
- E. TI-LFA leverages the post-convergence path that carries data traffic after a failure.

**Answer:** DE**NEW QUESTION 163**

Refer to the exhibit.





Router R1 is configured with class map CE with match Ip precedence critical to align with customer contract SLAs. The customer is sending all traffic from CE1 toward the FTP server with IP precedence 5 A network engineer must allow 10% of interface capacity on router R3 Which two actions must the engineer take to accomplish the task? (Choose two )

- A. Implement a class map on R1 to match all packets with QoS IP precedence value 100.
- B. Implement a class map on R3 to match all packets with QoS IP precedence value 101.
- C. Apply a policy map to R1 to reserve the remaining 10% of interface bandwidth.
- D. Apply a policy map to R3 to reserve 10% of interface bandwidth.
- E. Implement a class map on R3 to match all packets with QoS IP precedence.

**Answer: BD**

#### NEW QUESTION 164

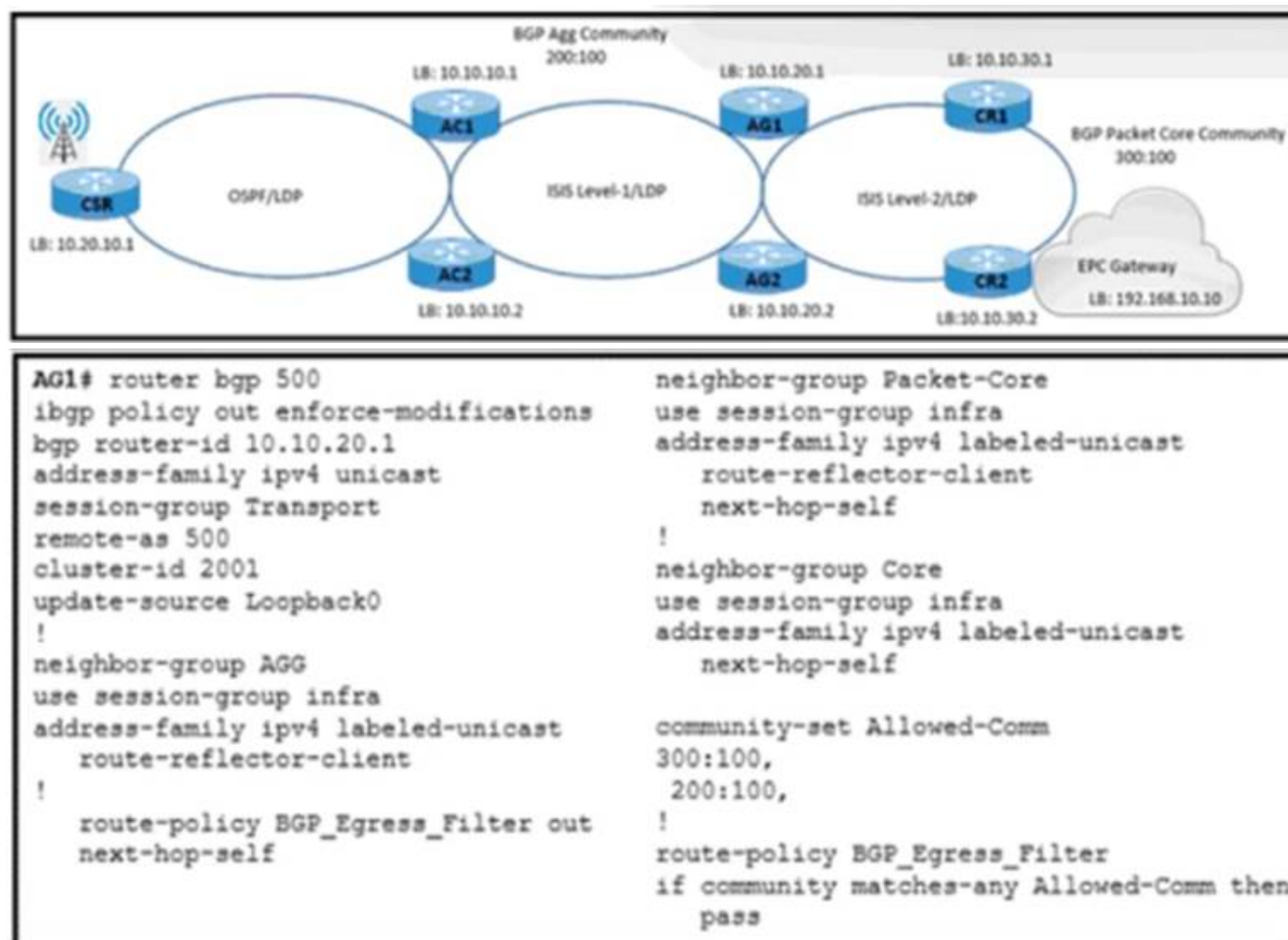
Which task must be performed first to Implement BFD in an IS-IS environment?

- A. Disable Cisco Express Forwarding on all interfaces running routing protocols other than IS-IS
- B. Configure BFD under the IS-IS process
- C. Configure all ISIS routers as Level 2 devices
- D. Configure BFD in an interface configuration mode

**Answer: D**

#### NEW QUESTION 167

Refer to the exhibit.



A NOC engineer is configuring label-based forwarding from CSR to the EPC gateway. Cell-site operation and maintenance for IPv4 traffic between 10.20.10.1 and 192.168.10.10 is already up. CR1 and CR2 are configured as route reflectors for AG1 and AG2. Which action completes the configuration?



- A. Remove address-family labeled-unicast from the BGP session-group infra on AG1 for neighbor-group core.
- B. Apply the BGP\_Egress\_Filter route policy to the BGP neighbor-group packet core on AG1.
- C. Configure AG1 to allocate a label to the BGP routes that are received in the BGP session group transport.
- D. Configure AG1 to allow the 300:100 and 200:100 communities in the BGP\_Egress\_Filter route policy.

**Answer: B**

#### NEW QUESTION 170

Drag and drop the functions from the left onto the correct Path Computation Element Protocol roles on the right

calculates paths through the network	Path Computation Element
keeps TE topology database information	
sends path calculation request	
sends path creation request	Path Computation Client
sends path status updates	

- A. Mastered
- B. Not Mastered

**Answer: A**

#### Explanation:

Path Computation Element (Calculates paths through the network, keeps TE topology database information, sends path status updates)

Path computation Client (sends path calculation request, sends path creation request)

Path Computation Element (PCE)

Represents a software module (which can be a component or application) that enables the router to compute paths applying a set of constraints between any pair of nodes within the router's TE topology database. PCEs are discovered through IGP.

Path Computation Client (PCC)

Represents a software module running on a router that is capable of sending and receiving path computation requests and responses to and from PCEs. The PCC is typically an LSR (Label Switching Router).

[https://www.cisco.com/c/en/us/td/docs/routers/crs/software/crs\\_r5-3/mpls/configuration/guide/b-mpls-cg53x-crs](https://www.cisco.com/c/en/us/td/docs/routers/crs/software/crs_r5-3/mpls/configuration/guide/b-mpls-cg53x-crs)

#### NEW QUESTION 172

Refer to the exhibit.



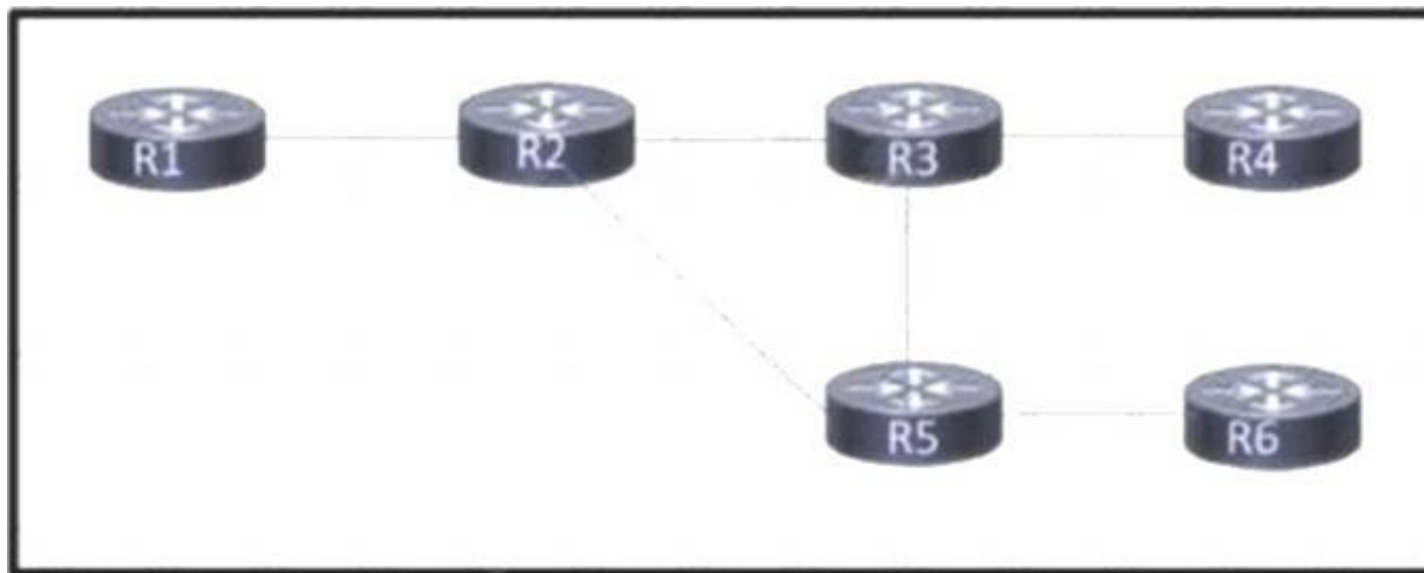
An engineer is scripting ACLs to handle traffic on the given network. The engineer must block users on the network between R1 and R2 from leaving the network through R5. but these users must still be able to access all resources within the administrative domain. How must the engineer implement the ACL configuration?

- A. Configure an ACL that permits traffic to any internal address, and apply it to the R5 interfaces to R3 and R4 in the egress direction
- B. Configure a permit any ACL on the R1 interface to R2 in the egress direction, and a deny any ACL on the interface in the ingress direction
- C. Configure an ACL that permits traffic to all internal networks and denies traffic to any external address, and apply it to the R2 interface to R1 in the ingress direction.
- D. Configure an ACL that denies traffic to any internal address and denies traffic to any external address, and apply it to the R5 interfaces to R3 and R4 in the ingress direction

**Answer: C**

**NEW QUESTION 174**

Refer to the exhibit.



Customers report occasional forwarding issues from hosts connected to R6 to hosts connected to R1. A network engineer has just updated the MPLS configuration on the network, and a targeted LDP session has been established between R1 and R5. Which additional task must the engineer perform so that the team can identify the path from R6 to R1 in case the forwarding issues continue?

- A. Configure an MPLS TE from R4 to R1 that routes through R5.
- B. Implement MPLS OAM within the network.
- C. Implement MPLS VPLS within the network.
- D. Configure MPLS LDP Sync on each router.

**Answer: B**

**NEW QUESTION 177**

Refer to the exhibit.

```

R1# configure terminal
R1(config)# router isis area2
R1(config-router)# metric-style wide level-1
  
```

An engineer is configuring multiprotocol IS-IS for IPv6 on router R1. Which additional configuration must be applied to the router to complete the task?

- ☒ R1# configure terminal  
R1(config)# router isis area1  
R1(config-router)# metric-style wide level-1  
R1(config-router)# address-family ipv6  
R1(config-router-af)# multi topology
- ☐ R1# configure terminal  
R1(config)# router isis area2  
R1(config-router)# metric-style wide  
R1(config-router)# address-family ipv6  
R1(config-router-af)# multi topology
- ☐ R1# configure terminal  
R1(config)# router isis area1  
R1(config-router)# metric-style wide level-2  
R1(config-router)# address-family ipv6  
R1(config-router-af)# multi-topology
- ☐ R1# configure terminal  
R1(config)# router isis area2  
R1(config-router)# address-family ipv6  
R1(config-router-af)# multi-topology

- A. Option A
- B. Option B
- C. Option C
- D. Option D

**Answer: D**

**NEW QUESTION 178**

What is the role of NFVI?

- A. domain name service
- B. intrusion detection
- C. monitor
- D. network address translation

**Answer: C**

**NEW QUESTION 182**

An ISP is implementing end-to-end fault monitoring for a customer based on the IEEE 802.3ah standard. The solution must detect when 15 or more corrupted Ethernet packets arrive within 10 ms and stop propagating traffic through the ISP backbone network or to the customer side. Which configuration must the ISP engineer apply?

- A. ethernet oam link-monitoring enable  
ethernet oam link-monitor crc-errors ingress time-window 10  
ethernet oam link-monitor crc-errors ingress threshold high 15  
ethernet oam link-monitor crc-errors egress time-window 10  
ethernet oam link-monitor crc-errors egress threshold high 15  
ethernet oam link-monitor high-threshold action shutdown-interface
- B. ethernet oam link-monitoring  
ethernet oam link-monitor receive-crc window 15  
ethernet oam link-monitor receive-crc threshold high 10  
ethernet oam link-monitor high-threshold action disable-interface
- C. ethernet oam  
ethernet oam link-monitor receive-crc window 10  
ethernet oam link-monitor receive-crc threshold high 15  
ethernet oam link-monitor transmit-crc window 10  
ethernet oam link-monitor transmit-crc threshold high 15  
ethernet oam link-monitor high-threshold action error-disable-interface
- D. ethernet oam link-monitoring global enable  
ethernet oam link-monitor receive crc-errors period 15  
ethernet oam link-monitor receive crc-errors limit 15  
ethernet oam link-monitor transmit crc-errors period 10  
ethernet oam link-monitor transmit crc-errors limit 15  
ethernet oam link-monitor limit action error-disable interface

**Answer: C**

**NEW QUESTION 183**

A network engineer is implementing a QoS policy for outbound management traffic classification and marking on a CPE device with these requirements:

- Management protocols must be marked with DSCP AF class 2 with low drop probability.
- Monitoring protocols must be marked with DSCP AF class 1 with low drop probability.
- All remaining traffic must be marked with a DSCP value of 0.

Which configuration must the engineer implement to satisfy the requirements?

A)

```
policy-map cpe-mgmt-policy
  class management
    set ip dscp af21
  class monitoring
    set ip dscp af11
  class class-default
    set ip dscp af0
end
```

B)

```
policy-map cpe-mgmt-policy
  class management
    set ip dscp af23
  class monitoring
    set ip dscp af13
  class class-default
    set ip dscp af0
end
```

C)

```
policy-map cpe-mgmt-policy
  class management
    set ip dscp af21
  class monitoring
    set ip dscp af11
  class class-default
    set ip dscp default
end
```

D)

```
policy-map cpe-mgmt-policy
class management
  set ip dscp af23
class monitoring
  set ip dscp af13
class class-default
  set ip dscp default
end
```

- A. Option A
- B. Option B
- C. Option C
- D. Option D

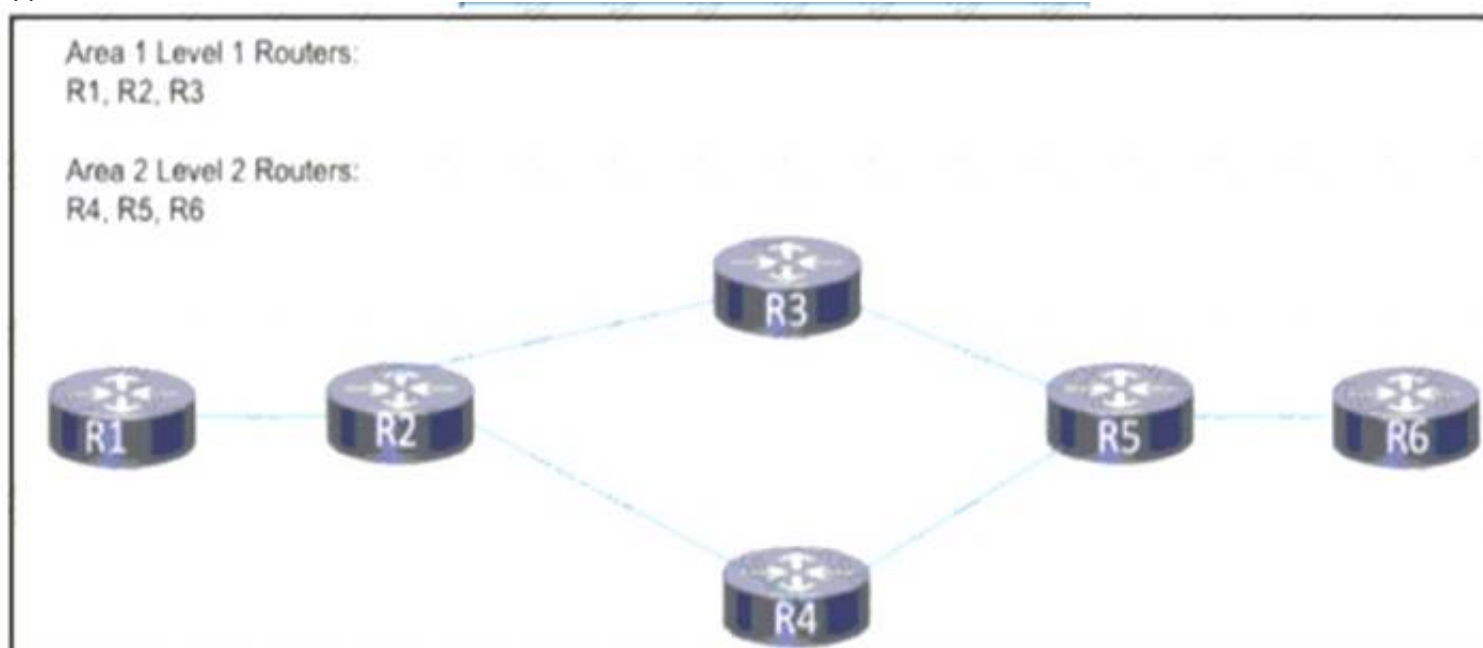
**Answer:** C

**Explanation:**

[https://www.cisco.com/c/en/us/td/docs/switches/datacenter/nexus1000/sw/4\\_0/qos/configuration/guide/nexus10](https://www.cisco.com/c/en/us/td/docs/switches/datacenter/nexus1000/sw/4_0/qos/configuration/guide/nexus10)

#### NEW QUESTION 186

Refer to the exhibit A network engineer is in the process of implementing IS-IS Area 1 and Area 2 on this network to segregate traffic between different segments of the network The hosts in the two new areas must maintain the ability to communicate with one another In both directions. Which additional change must be applied?



- A. Reconfigure either R3 or R4 as a Level 1/Level 2 router.
- B. Reconfigure routers R1, R2 R5. and R6 as Level 1/Level 2 routers.
- C. Reconfigure routers R2 and R5 as Level 1/Level 2 routers.
- D. Reconfigure routers R4, R5 and R6 as Level 1 routers

**Answer:** A

#### NEW QUESTION 191

What is a characteristic of prefix segment identifier?

- A. It contains a router to a neighbor
- B. It contains the interface address of the device per each link
- C. It is globally unique.
- D. It is locally unique.

**Answer:** C

#### NEW QUESTION 195

Which configuration enables BGP FlowSpec client function and installation of policies on all local interfaces?



A)

☐ flowspec  
address-family ipv4  
local-install all-interface

B)

☒ flowspec  
address-family ipv4  
install interface-all

C)

☐ flowspec  
address-family ipv4  
local-install interface-all

D)

☐ flowspec  
address-family ipv4  
install interface-all local

- A. Option A
- B. Option B
- C. Option C
- D. Option D

**Answer:** C**NEW QUESTION 199**

Which benefit is provided by FRR?

- A. It provides fast forwarding path failure detection times for all media.
- B. It provides rapid failure detection between forwarding engines.
- C. It provides performance data for the service provider network.
- D. It protects Cisco MPLS TE LSPs from link and node failures.

**Answer:** D**NEW QUESTION 200**

What causes multicast traffic to permanently stay on the shared tree and not switch to the source tree?

- A. The SPT threshold is set to infinity.
- B. The RP IP address is configured incorrectly.
- C. The RP announcements are being filtered.
- D. SSM range is being used.

**Answer:** C**Explanation:**

Network administrators can force traffic to stay on the shared tree by using the Cisco IOS **ip pim spt-threshold infinity** command.

[https://www.cisco.com/c/en/us/td/docs/ios/solutions\\_docs/ip\\_multicast/White\\_papers/mcst\\_ovr.html](https://www.cisco.com/c/en/us/td/docs/ios/solutions_docs/ip_multicast/White_papers/mcst_ovr.html)

**NEW QUESTION 205**

Refer to the exhibit.

```
R1(config)# ipv6 unicast-routing
R1(config)# ipv6 router ospf 100
R1(config-rtr)# router-id 1.1.1.1
```

An engineer is configuring router R1 for OSPFv3 as shown. Which additional configuration must be performed so that the three active interfaces on the router will advertise routes and participate in OSPF IPv6 processes?

A)

```
R1(config)# interface Ethernet1/1
R1(config-if)# ipv6 ospf 100 area 0
```

```
R1(config)# interface Ethernet1/2
R1(config-if)# ipv6 ospf 100 area 10
```

```
R1(config)# interface Ethernet1/3
R1(config-if)# ipv6 ospf 100 area 20
```

B)

```
R1(config)# interface Ethernet1/1
R1(config-if)# ip ospf hello-interval 1
R1(config-if)# ip ospf 1 area 0
```

```
R1(config)# interface Ethernet1/2
R1(config-if)# ip ospf hello-interval 1
R1(config-if)# ip ospf 1 area 10
```

```
R1(config)# interface Ethernet1/3
R1(config-if)# ip ospf hello-interval 1
R1(config-if)# ip ospf 1 area 20
```

C)

```
R1(config)# interface Ethernet1/1
R1(config-if)# ip ospf 1 area 0
```

```
R1(config)# interface Ethernet1/2
R1(config-if)# ip ospf 1 area 10
```

```
R1(config)# interface Ethernet1/3
R1(config-if)# ip ospf 1 area 20
```

A.

**Answer:** A

#### NEW QUESTION 207

Which action does the ingress VTEP perform on traffic between EVPN VXLAN overlays?

- A. routing and tunneling when doing symmetric IRB
- B. routing when doing asymmetric IRB
- C. routing and bridging when doing asymmetric IRB
- D. bridging when doing symmetric IRB

**Answer:** C

#### Explanation:

Asymmetric IRB

With asymmetric IRB, the ingress VTEP performs both Layer-2 bridging and Layer-3 routing lookup, whereas the egress VTEP performs only Layer-2 bridging lookup.

<https://www.cisco.com/c/en/us/products/collateral/switches/nexus-9000-series-switches/guide-c07-734107.html>

#### NEW QUESTION 209

Refer to the exhibit:

**Router 1:**

```
ip route 192.0.2.0 255.255.255.0 null 0
ip route 192.168.1.0 255.255.255.0 null 0 tag 1
```

```
route-map ddos
 match tag 1
 set ip next-hop 192.0.2.1
 set local-preference 150
 set community no export
```

```
route-map ddos permit 20
```

```
router bgp 65513
 redistribute static route-map ddos
```

**Router 2:**

```
ip route 192.0.2.0 255.255.255.0 null 0
```

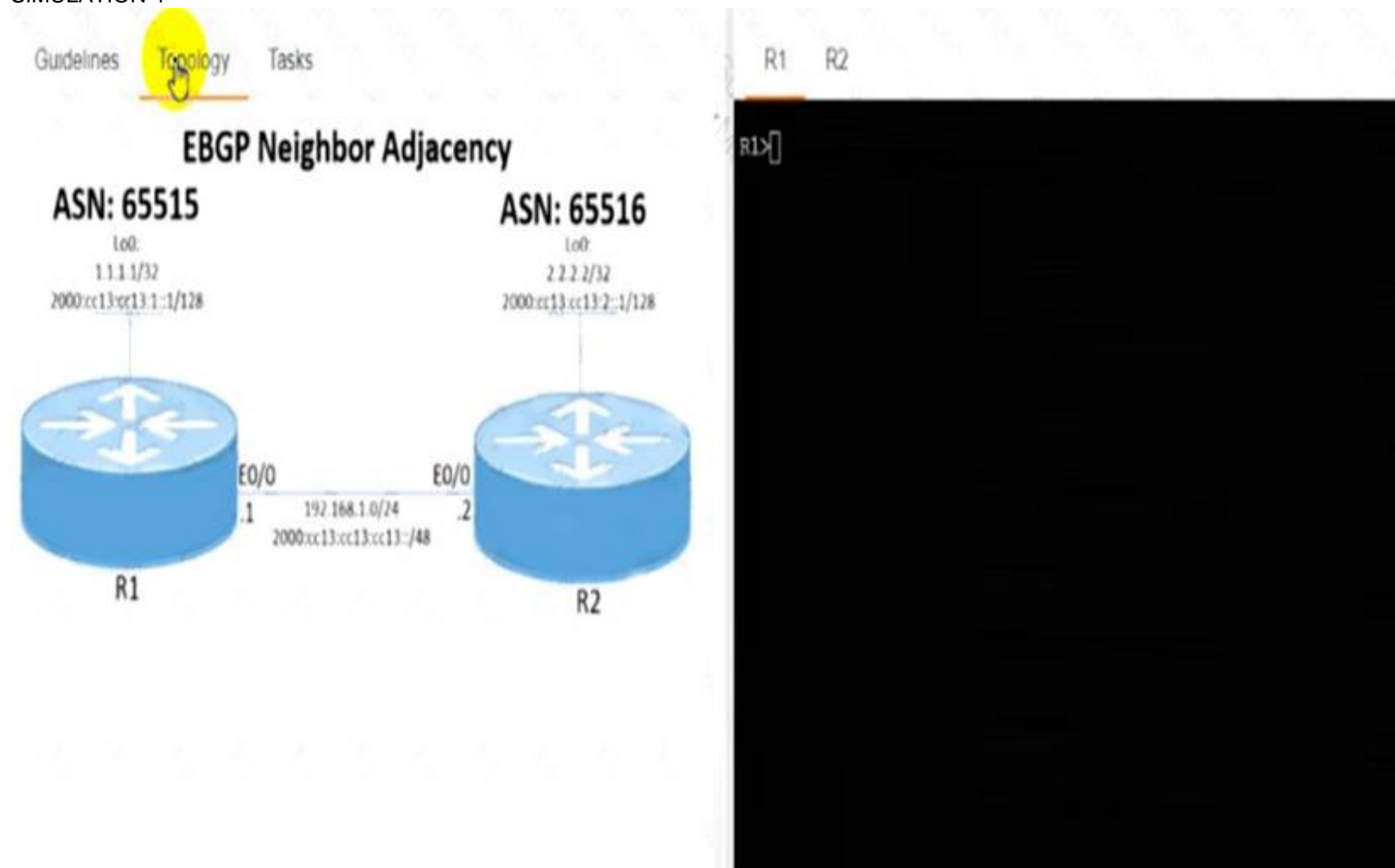
An engineer is preparing to implement data plane security configuration. Which statement about this configuration is true?

- A. Router 1 drops all traffic with a local-preference set to 150
- B. All traffic is dropped
- C. All traffic to 192.168.1.0/24 is dropped
- D. Router 1 and Router 2 advertise the route to 192.0.2.0/24 to all BGPFD peers.

**Answer: C**

**NEW QUESTION 214**

**SIMULATION 4**



Guidelines
**Topology**
Tasks

Configure the BGP routing protocol for R1 and R2 according to the topology to achieve these goals:

1. Configure EBGP neighbor adjacency for the IPv4 and IPv6 address family between R1 and R2 using Loopback0 IPv4 and IPv6 addresses. All BGP updates must come from the Loopback0 interface as the source. Do not use IGP routing protocols to complete this task.
2. Configure MD5 Authentication for the EBGP adjacency between R1 and R2. The password is clear text **C1sc0!**.

Submit feedback about this item

R1R2

R1>

- A. Mastered
- B. Not Mastered

**Answer:** A

**Explanation:**

```

R1
Router bgp 65515
No bgp default ipv4-unicast Neig 2.2.2.2 remote-as 65516
Nei 2.2.2.2 update-soc loopback0 Nei 2.2.2.2 ebgp-multihop 2 Neig 2.2.2.2 pass C1sc0!
Nei 2000:cc13:cc13:2::1 remote-as 65516 Nei 2000:cc13:cc13:2::1 update-so loopback0 Nei 2000:cc13:cc13:2::1 pass C1sc0!
Nei 2000:cc13:cc13:2::1 ebgp-multihop 2 Address-family ipv4
Neig 2.2.2.2 activate Address-family ipv6
Nei 2000:cc13:cc13:2::1 activate
Ip route 2.2.2.2 255.255.255.255 192.168.1.2
Ipv6 route 2000:cc13:cc13:2::1/128 2000:cc13:cc13:cc13:2 R2
Router bgp 65516
No bgp default ipv4-unicast Neig 1.1.1.1 remote-as 65515
Nei 1.1.1.1 update-soc loopback0 Nei 1.1.1.1 pass C1sc0!
Nei 1.1.1.1 ebgp-multihop 2
Nei 2000:cc13:cc13:1::1 remote-as 65515 Nei 2000:cc13:cc13:1::1 update-so loopback0 Nei 2000:cc13:cc13:1::1 pass C1sc0!
Nei 2000:cc13:cc13:1::1 ebgp-multihop 2 Address-family ipv4
Neig 1.1.1.1 activate Address-family ipv6
Nei 2000:cc13:cc13:1::1 activate
Ip route 1.1.1.1 255.255.255.255 192.168.1.1
Ipv6 route 2000:cc13:cc13:1::1/128 2000:cc13:cc13:cc13:1
  
```

**NEW QUESTION 215**

Drag and drop the OSPF and IS-IS Cisco MPLS TE extensions from the left to their functional descriptions on the right.



TLV Type 2	includes an 8-bit default metric
TLV Type 22	supports a 32-bit metric and an up/down bit
TLV Type 134	carries a 32-bit router ID for traffic engineering
TLV Type 135	advertisements are flooded throughout the entire area network
Type 10 Opaque LSA	contains information about the link and includes other sub-TLVs

- A. Mastered
- B. Not Mastered

Answer: A

Explanation:

TLV Type 2	TLV Type 22
TLV Type 22	TLV Type 135
TLV Type 134	TLV Type 134
TLV Type 135	TLV Type 2
Type 10 Opaque LSA	Type 10 Opaque LSA

NEW QUESTION 219

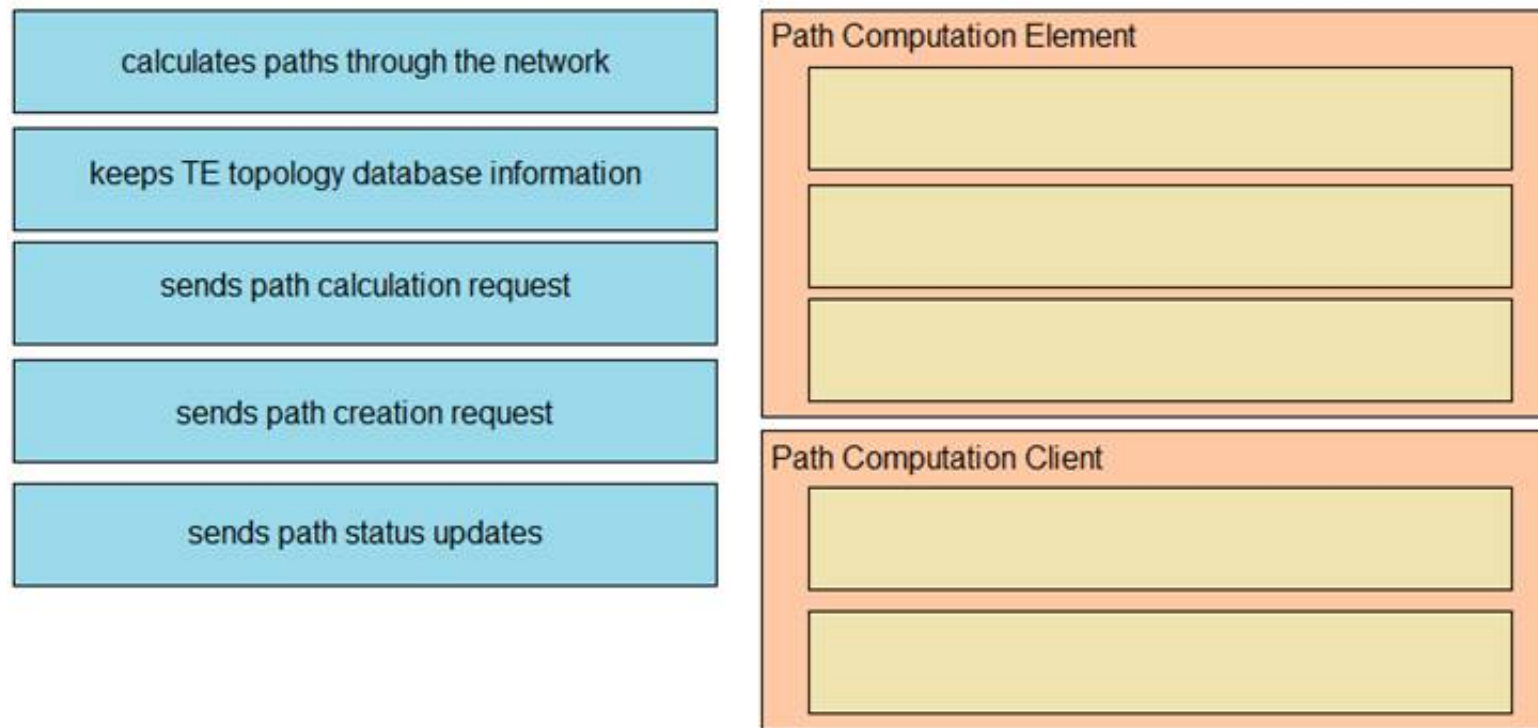
What Is one of the differences between Ansible and Chef?

- A. Ansible uses YAML and Chef uses Ruby.
- B. Chef requires the use of Windows in the environment and Ansible requires Linux.
- C. Chef is highly scalable and Ansible is highly secure.
- D. Ansible uses Ruby and Chef uses Python.

Answer: A

NEW QUESTION 222

Drag and drop the functions from the left onto the Path Computation Element Protocol roles on the right.



- A. Mastered  
B. Not Mastered

**Answer:** A

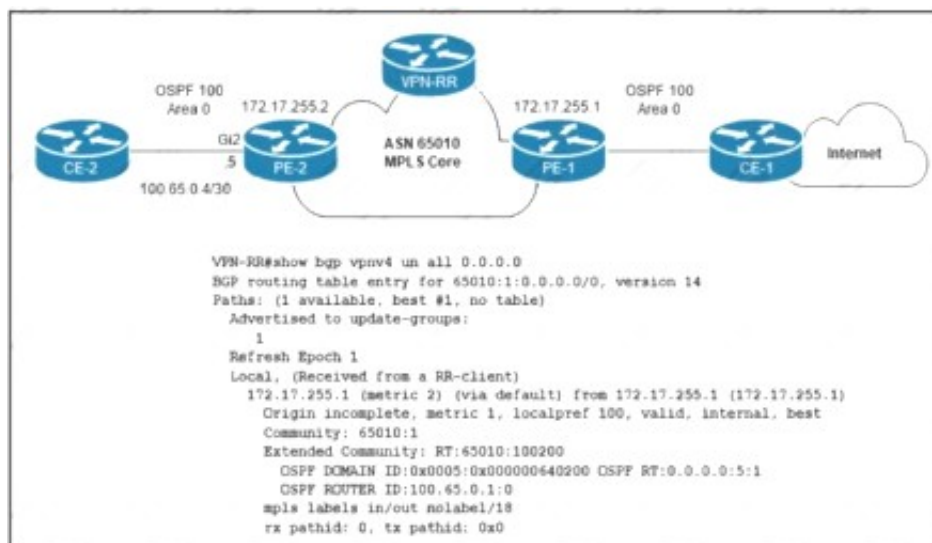
**Explanation:**

PCE – 1,2,5

PCC- 3,4

#### NEW QUESTION 227

Refer to the exhibit.



The network engineer who manages ASN 65010 is provisioning a customer VRF named CUSTOMER-ABC on PE-2. The PE-CE routing protocol is OSPF Internet reachability is available via the OSPF 0 0 0.0/0 route advertised by CE-1 to PE-1 In the customer VRF Which configuration must the network engineer Implement on PE-2 so that CE-2 has connectivity to the Internet?

A)

```

vrf definition CUSTOMER-ABC
rd 65010:1
address-family ipv4
route-target both 65010:1
!
router ospf 100 vrf CUSTOMER-ABC
network 100.65.0.4 0.0.0.3 area 0
redistribute bgp 65010 subnets
default-information originate
!
router bgp 65010
address-family ipv4 unicast vrf CUSTOMER-ABC
redistribute ospf 100 match internal external
  
```

B)

```
vrf definition CUSTOMER-ABC
rd 65010:2
address-family ipv4
route-target both 65010:100200
!
router ospf 100 vrf CUSTOMER-ABC
network 100.65.0.4 0.0.0.3 area 0
redistribute bgp 65010 subnets
!
router bgp 65010
address-family ipv4 unicast vrf CUSTOMER-ABC
redistribute ospf 100 match internal external
```

C)

```
vrf definition CUSTOMER-ABC
rd 65010:1
address-family ipv4
route-target both 65010:100200
!
router ospf 100 vrf CUSTOMER-ABC
network 100.65.0.4 0.0.0.3 area 0
redistribute bgp 65010 subnets
default-information originate
!
router bgp 65010
address-family ipv4 unicast vrf CUSTOMER-ABC
redistribute ospf 100 match internal external
```

D)

```
vrf definition CUSTOMER-ABC
rd 65010:2
address-family ipv4
route-target both 65010:1
!
router ospf 100 vrf CUSTOMER-ABC
network 100.65.0.4 0.0.0.3 area 0
redistribute bgp 65010 subnets
!
router bgp 65010
address-family ipv4 unicast vrf CUSTOMER-ABC
redistribute ospf 100 match internal external
```

- A. Option A
- B. Option B
- C. Option C
- D. Option D

**Answer: C****NEW QUESTION 229**

Refer to the exhibit.

```
line vty 0 4
  access-class 100 in
  transport input ssh
  login local
line vty 5 15
  access-class 100 in
  transport input ssh
  login local
```

An engineer has started to configure a router for secure remote access as shown. All users who require network access need to be authenticated by the SSH Protocol. Which two actions must the engineer implement to complete the SSH configuration? (Choose two.)

- A. Configure an IP domain name.
- B. Configure service password encryption.
- C. Configure crypto keys
- D. Configure ACL 100 to permit access to port 22.
- E. Configure a password under the vty lines.



Answer: AC

#### NEW QUESTION 234

Refer to the exhibit.

```
RP/0/RP0/CPU0:XR1#do sh bundle

Bundle-Ether11
  Status: Up
  Local links <active/standby/configured>: 1 / 2 / 3
  Local bandwidth <effective/available>: 1000000 (1000000) kbps
  MAC address (source): 0007.ec14.cc2b (Chassis pool)
  Inter-chassis link: No
  Minimum active links / bandwidth: 1 / 1 kbps
  Maximum active links: 1
  Wait while timer: 2000 ms
  Load balancing:
    Link order signaling: Not configured
    Hash type: Default
    Locality threshold: None
  LACP: Operational
    Flap suppression timer: Off
    Cisco extensions: Disabled
    Non-revertive: Disabled
  mLACP: Not configured
  IPv4 BFD: Not configured
  IPv6 BFD: Not configured

Port          Device      State      Port ID      B/W, kbps
-----
Gi0/0/0/0     Local      Standby    0x8000, 0x0003  1000000
  Link is Standby due to maximum-active links configuration
Gi0/0/0/1     Local      Standby    0x8000, 0x0002  1000000
  Link is Standby due to maximum-active links configuration
Gi0/0/0/2     Local      Active     0x8000, 0x0001  1000000
  Link is Active
```

A network operator needs to shut down interface Gi0/0/0/2 for maintenance. What occurs to the interface states of Gi0/0/0/0 and Gi0/0/0/1?

- A. Gi0/0/0/1 and Gi0/0/0/0 become active
- B. Gi0/0/0/1 and Gi0/0/0/0 remains standby
- C. Gi0/0/0/0 becomes activ
- D. Gi0/00/1 remains standby
- E. Gi0/0/0/1 becomes active Gi0/0/0/0 remains standby

Answer: D

#### NEW QUESTION 236

Refer to the exhibit.

```
Control Plane Interface
Service policy CoPP-normal
Hardware Counters:
class-map: CoPP-normal (match-all)
Match: access-group 100
police :
6000 bps 1000 limit 1000 extended limit
Earl in slot 3 :
0 bytes
5 minute offered rate 0 bps
aggregate-forwarded 0 bytes action: transmit
exceeded 0 bytes action: drop
aggregate-forward 0 bps exceed 0 bps
Earl in slot 5 :
0 bytes
5 minute offered rate 0 bps
aggregate-forwarded 0 bytes action: transmit
exceeded 0 bytes action: drop
aggregate-forward 0 bps exceed 0 bps
```

Which show command shows statistics for the control plane policy and is used to troubleshoot?

- A. show control-plane CoPP
- B. show control-plane
- C. show policy-map control-plane
- D. show policy control-plane

Answer: C



**Explanation:**

```
Router# show policy-map control-plane
```

```
Control Plane
```

```
Service-policy input:TEST
```

```
Class-map:TEST (match-all)
```

```
  20 packets, 11280 bytes
```

```
  5 minute offered rate 0 bps, drop rate 0 bps
```

```
Match:access-group 101
```

```
police:
```

```
  8000 bps, 1500 limit, 1500 extended limit
```

```
  conformed 15 packets, 6210 bytes; action:transmit
```

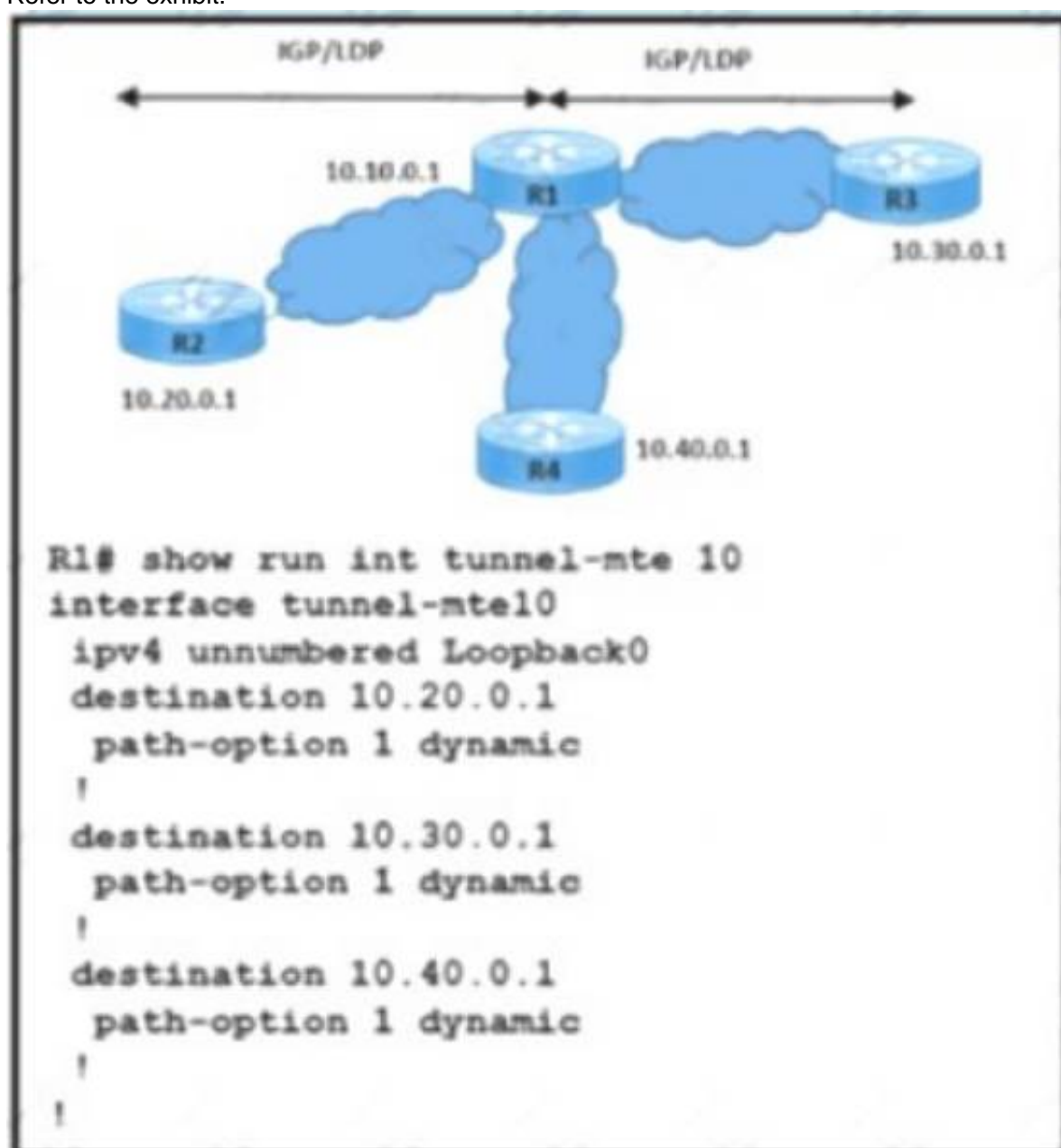
```
  exceeded 5 packets, 5070 bytes; action:drop
```

```
  violated 0 packets, 0 bytes; action:drop
```

```
  conformed 0 bps, exceed 0 bps, violate 0 bps
```

**NEW QUESTION 239**

Refer to the exhibit.



An engineer must Implement a traceroute operation to verify the R1 point-to-multipoint LSP connections. The traceroute operation must return all labels and hop-by-hop IP addresses for destinations 10.20.1.1, 10.30.0.1, and 10.40.0.1. and the maximum number of hops is 4. Which command must be executed to meet the requirements?

- A. traceroute mpls traffic-eng tunnel-mte 10 ttl 4
- B. traceroute mpls traffic-eng tunnel-mte 10 responder-id 10.40.0.1
- C. traceroute mpls ipv4 10.30.0.1/32 fee-type generic
- D. traceroute mpls ipv4 10.20.0.1/32 ttl 4

**Answer: A**

**NEW QUESTION 240**

Which two PHY modes are available to implement an IOS XR Gigabit Ethernet interface interface? (Choose two.)

- A. SONET
- B. MAN
- C. WDWM
- D. LAN
- E. WAN

**Answer:** DE

**Explanation:**

[https://www.cisco.com/c/en/us/td/docs/routers/crs/software/crs\\_r4-1/interfaces/command/reference/interfaces\\_cr](https://www.cisco.com/c/en/us/td/docs/routers/crs/software/crs_r4-1/interfaces/command/reference/interfaces_cr)

**NEW QUESTION 241**

Which feature describes the weight parameter for BGP path selection?

- A. Its value is local to the router
- B. Its value is set either locally or globally.
- C. Its default value is 0.
- D. Its value is global to the router.

**Answer:** A

**NEW QUESTION 244**

Refer to the exhibit.

```
router ospf 1
segment-routing mpls
segment-routing forwarding mpls
```

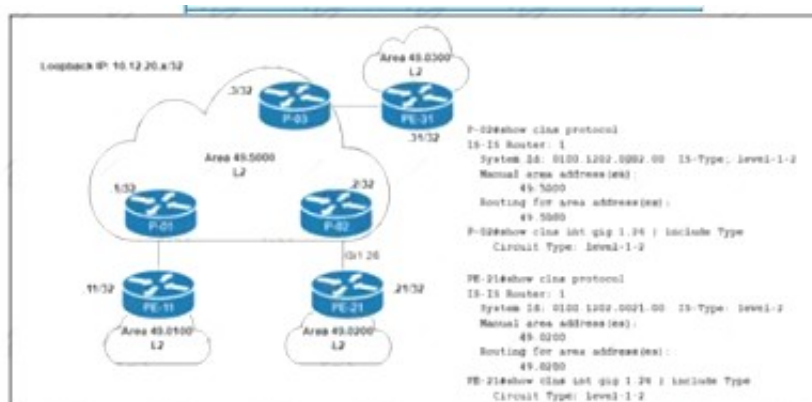
AN engineer is configuring segment routing on an ISP to simplify traffic engineering and management across network domains. What should the engineer do to complete the implementation of segment routing?

- A. OSPF must be configured with wide area metrics to support routing.
- B. The segment will run without any further configuration.
- C. Area authentication must be enable before segment routing will run.
- D. Area Authentication must be enable before segment routing will run.

**Answer:** C

**NEW QUESTION 249**

Refer to me exhibit.



Refer to the exhibit. A network engineer notices PE-21 convergence degradation due to the growing LSDB size of Level 2 areas in the network. The engineer decides to migrate router PE-21 from an inter-area design to an intra-area implementation. Inter-area routing must be accomplished via an ATT-bit set by the Level 1/Level 2 router. Which configuration must the engineer implement on PE-21 to complete the migration?

- A. configure terminal router isis 1no net 49.0200net 49.5000is-type level-1-2 end
- B. configure terminal router isis 1net 49.5000.0100.1202.0021.00is-type level-1-2 end
- C. configure terminal router isis 1net 49.5000.0100.1222.0022.00is-type level-1 end
- D. configure terminal router isis 1no net 49.0200.0100.1202.0021.00net 49.5000.0100.1202.0021.00is-type level-1end

**Answer:** D

**NEW QUESTION 252**

Refer to the exhibit.

```
R1#show ip ospf interface gig 2
GigabitEthernet2 is up, line protocol is up
Internet Address 172.20.1.12/31, Area 0.0.1.255, Attached via Interface Enable
Process ID 1, Router ID 10.255.255.1, Network Type POINT_TO_POINT, Cost: 1
Topology-MTID      Cost      Disabled      Shutdown      Topology Name
    0              1         no           no           Base
Enabled by interface config, including secondary ip addresses
Transmit Delay is 1 sec, State POINT_TO_POINT
Timer intervals configured, Hello 10, Dead 40, Wait 40, Retransmit 5

R1#show ip interface gig 2
GigabitEthernet2 is up, line protocol is up
Internet address is 172.20.1.12/31
MTU is 9216 bytes

R2#show ip ospf interface gig 2
GigabitEthernet2 is up, line protocol is up
Internet Address 172.20.1.13/31, Area 511, Attached via Interface Enable
Process ID 1, Router ID 10.255.255.2, Network Type POINT_TO_MULTIPOINT, Cost: 1
Topology-MTID      Cost      Disabled      Shutdown      Topology Name
    0              1         no           no           Base
Enabled by interface config, including secondary ip addresses
Transmit Delay is 1 sec, State POINT_TO_MULTIPOINT
Timer intervals configured, Hello 10, Dead 40, Wait 40, Retransmit 5

R2#show ip interface gig 2
GigabitEthernet2 is up, line protocol is up
Internet address is 172.20.1.13/31
MTU is 1500 bytes
```

While troubleshooting the OSPF adjacency between routers R1 and R2 an engineer noticed that both routers are stuck in the EXCHANGE/EXSTART state. What should the engineer fix to solve the ongoing issue?

- A. match IPv4 addresses
- B. match OSPF areas
- C. match OSPF network types
- D. match MTU values

Answer: D

NEW QUESTION 256

Drag and drop the multicast concepts from the left onto the correct descriptions on the right.

IGMP	multicast routing protocol that floods traffic to all peers
PIM-DM	technology that manages the process of joining and leaving multicast groups
PIM-SM	technology that requires an RP
shared tree	technology that uses the RP as the single common root
source tree	shortest-path tree

- A. Mastered
- B. Not Mastered

Answer: A

Explanation:

1: PIM-DM 2:IGMP 3:PIM-SM 3:shared tree 4:source tree

NEW QUESTION 257

Refer to the exhibit:



```
R1
interface fastethernet1/0
  ip address 192.168.1.3 255.255.255.0
router bgp 65000
  router-id 192.168.1.1
  neighbor 192.168.1.2 remote-as 65012

R2
interface fastethernet1/0
  ip address 192.168.1.2 255.255.255.0
router bgp 65012
  router-id 192.168.1.1
  neighbor 192.168.1.3 remote-as 65000
  neighbor 192.168.1.3 local-as 65112
```

Assume all other configurations are correct and the network is otherwise operating normally. Which conclusion can you draw about the neighbor relationship between routers R1 and R2?

- A. The neighbor relationship will be up only if the two devices have activated the correct neighbor relationships under the IPv4 address family
- B. The neighbor relationship is down because R1 believes R2 is in AS 65012.
- C. The neighbor relationship is up
- D. The neighbor relationship is down because the local-as value for R2 is missing in the R1 neighbor statement

Answer: B

NEW QUESTION 259

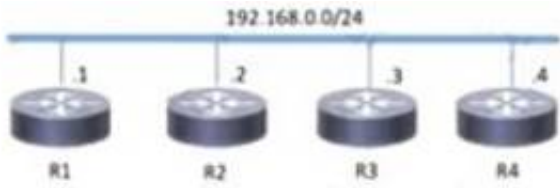
A service provider requires continuous real-time network monitoring to provide reliable SLAs to its customers. To satisfy this requirement, a network administrator is implementing gRPC dial out on an ASR with TLS. Receiver 192.168.10.2 will be assigned one of the subscriptions, and it will manage the ASR. Which configuration must the engineer apply to the router as part of the configuration process?

- A. snmp-server community public snmp-server enable trapssnmp-server host 192.168.10.2 version 2c public.
- B. telemetry model-driven destination-group DGroup1address family ipv4 192.168.10.2 1 port 10 encoding self-describing-gpb
- C. snmp-server community public snmp-server enable trapssnmp-server enable traps snmp authentication snmp-server managersnmp-server manager session-timeout 1000
- D. telemetry model-driven destination-group ciscotestaddress family ipv4 192.168.10.2 port 10 encoding self-describing-gpbprotocol grpc tis-hostname ciscotest.com

Answer: D

NEW QUESTION 263

Refer to the exhibit.



<pre>R1 router isis   net 52.0011.0000.0000.0001.00  interface gigabitethernet0/1   ip address 192.168.0.1   255.255.255.0   ip router isis</pre>	<pre>R3 router isis   net 52.0022.0000.0000.0003.00  interface gigabitethernet0/1   ip address 192.168.0.3   255.255.255.0   ip router isis</pre>
<pre>R2 router isis   net 52.0022.0000.0000.0002.00  interface gigabitethernet0/1   ip address 192.168.0.2   255.255.255.0   ip router isis</pre>	<pre>R4 router isis   net 52.0011.0000.0000.0004.00  interface gigabitethernet0/1   ip address 192.168.0.4   255.255.255.0   ip router isis</pre>

Which two topology changes happen to the IS-IS routers? (Choose two.)

- A. All four routers are operating as Level 1 routers only.
- B. All four routers are operating as Level 2 routers only.
- C. R1 and R4 are Level 2 neighbours.
- D. R1 and R2 are Level 2 neighbours.



E. All four routers are operating as Level 1-2 routers.

**Answer:** DE

#### NEW QUESTION 266

Refer to the exhibit.

```
interface GigabitEthernet 1/0/1
 ip address 192.168.1.1 255.255.255.0
 ip router isis
 isis tag 15
 route-map match-tag permit 10
 match tag 15
```

A large organization is merging the network assets of a recently acquired competitor with one of its own satellite offices in the same geographic area. The newly acquired network is running different routing protocol than the company's primary network. As part of the merger a network engineer implemented this route map. Which task must the engineer perform to complete the implementation?

- A. Attach the route map to an IS-IS network statement to advertise the routes learned on this interface to IS-IS
- B. Enable metric style wide to allow the use of extended metrics from the protocols
- C. Attach the route map to the redistribution command to manipulate the routes as they are shared
- D. Configure an additional route map sequence to override the implicit deny at the end of the route map

**Answer:** C

#### NEW QUESTION 267

A network engineer must configure a router for Flexible NetFlow IPFIX export. The IP address of the destination server is 172.17.12.1. The source address must be set to the Loopback0 IPv4 address and exported packets must be set to DSCP CS3. The TTL must be 64 and the transport protocol must be set to UDP with destination port 4739. Which configuration must the engineer apply to the router?

- A. configure terminalflow exporter EXPORTER-1 destination 172.17.12.1 source Loopback0 dscp 3ttl 64export-protocol netflow-v9 transport udp 4739end
- B. configure terminalflow exporter EXPORTER-1 destination 172.17.12.1 source Loopback0dscp 24ttl 64export-protocol ipfix end
- C. configure terminalflow exporter EXPORTER-1 destination 172.17.12.1 source Loopback0dscp 24ttl 64export-protocol netflow-v9 transport udp 4739end
- D. configure terminalflow exporter EXPORTER-1 destination 172.17.12.1 source Loopback0dscp 3ttl 64export-protocol ipfix end

**Answer:** B

#### Explanation:

<https://www.cisco.com/c/en/us/td/docs/ios-xml/ios/fnetflow/configuration/xr-3s/fnf-xr-3s-book/fnf-ipfix-export>

#### NEW QUESTION 271

Refer to the exhibit.

```
Router 1:

router isis
 net 49.0011.0000.0000.0001.00

Router 2:

router isis
 net 49.0001.0000.0000.0001.00

Router 3:

router isis
 net 49.0011.0000.0000.0002.00
```

Router 4 is added to the network and must be in the same area as router 1. Which NET should the engineer assign?

- A. 49.0001.0000.0000.0004.00
- B. 49.0111.0000.0000.0001.00
- C. 49.0011.0000.0000.0003.00
- D. 49.0011.0000.0000.0002.00

Answer: C

#### NEW QUESTION 272

Refer to the exhibit:

```
R1
router bgp 65000
router-id 192.168.1.1
neighbor 192.168.1.2 remote-as 65001
neighbor 192.168.1.2 password cisco
```

Router R1 and its peer R2 reside on the same subnet in the network, If does it make connections to R27

- A. R1 establishes UDP connections that are authenticated with an MD5 password
- B. R1 establishes TCP connections that are authenticated with a clear-text password
- C. R1 establishes UDP connections that are authenticated with a clear-text password
- D. R1 establishes TCP connections that are authenticated with an MD5 password

Answer: D

#### NEW QUESTION 274

Refer to the exhibit:

```
PE-A#config t
PE-A(config)#class-map VOIP
PE-A(config-cmap)#match precedence 5
PE-A(config-cmap)#policy-map MARK-TRAFFIC
PE-A(config-pmap)#class VOIP
```

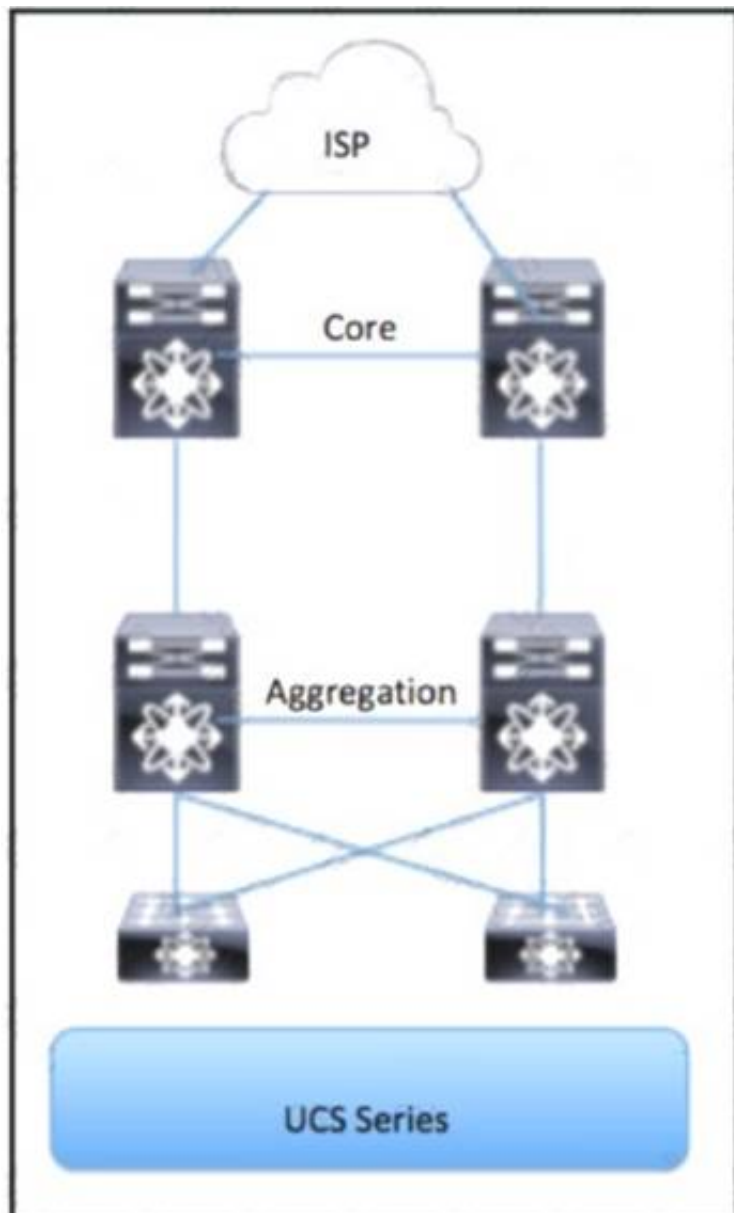
Which command is used to complete this configuration for QoS class-based marking?

- A. PE-A(config-pmap-c)#set dscp ef
- B. PE-A(config-pmap-c)#fair-queue
- C. PE-A(config-pmap-c)#random-detect
- D. PE-A(config -pmap-c)#priority

Answer: A

#### NEW QUESTION 279

Refer to the exhibit.



Which part of the diagram will host OpenStack components?

- A. Aggregation
- B. UCS Series
- C. Access
- D. Core

**Answer:** C

**NEW QUESTION 283**

Refer to the exhibit.

```
router(config)# router ospf 11
router(config-if)# passive-interface default
```

An engineer started to configure a router for OSPF. Which configuration must the engineer perform on the router without changing any interface configuration so that the router establishes an OSPF neighbor relationship with its peer?

- A. router(config)# router ospf 11router(config-if)# no passive-interface ethernet 1/1
- B. router(config)# interface ethernet 1/1router(config-if)# no shutdown
- C. router(config)# interface ethernet 1/1router(config-if)# ip ospf hello-interval
- D. router(config)# interface ethernet 1/1router(config-if)# ip ospf priority 0

**Answer:** A

**NEW QUESTION 284**

Which two features will be used when defining SR-TE explicit path hops if the devices are using IP unnumbered interfaces? (Choose two.)

- A. router ID
- B. labels
- C. node address
- D. next hop address
- E. output interface

**Answer:** BC

**NEW QUESTION 289**

Drag and drop the characteristics from the left onto the automation tool on the right.

**Answer Area**

- It is the standard transport protocol for communicating with network devices.
- It is a standard data modeling language.
- It retrieves operational data.
- It develops data models.
- It shapes state data.
- It sets and reads configuration data.

**NETCONF**

- A. Mastered
- B. Not Mastered

**Answer:** A

**Explanation:**

## Answer Area

- It is the standard transport protocol for communicating with network devices.
- It is a standard data modeling language.
- It retrieves operational data.
- It develops data models.
- It shapes state data.
- It sets and reads configuration data.

**NETCONF**

- It is a standard data modeling language.
- It retrieves operational data.
- It sets and reads configuration data.

### NEW QUESTION 291

Refer to the exhibit.

```
interface gigabitethernet 0/2
no ip directed-broadcast
```

Which type of DDoS attack will be mitigated by this configuration?

- A. SYN flood
- B. smurf attack
- C. SIP INVITE flood attacks
- D. teardrop attack

**Answer: B**

### NEW QUESTION 296

An engineering team must implement Unified MPLS to scale an MPLS network. Devices in the core layer use different IGPs, so the team decided to split the network into different areas. The team plans to keep the MPLS services as they are and introduce greater scalability. Which additional action must the engineers take to implement the Unified MPLS?

- A. Redistribute the IGP prefixes from one IGP into the other routers to ensure end-to-end LSPs.
- B. Configure the ABR routers as route reflectors that redistribute IGP into BGP.
- C. Redistribute the IGP prefixes into another IGP to ensure end-to-end LSPs.
- D. Move the IGP prefixes into IS-IS as the loopback prefixes of the PE routers to distribute the prefixes to other routers to create end-to-end LSPs.

**Answer: B**

### NEW QUESTION 301

An engineer implemented LDP protocol on the ISP network. The engineer must ensure that there are no packet loss issues when IGP and LDP protocols are not synchronized. Which configuring must the engineer implement so that the IGP routing protocol will wait until LDP convergence is completed?

- A. Disable IP CEF routers running LDP and enable LDP protocol.
- B. Configure MPLS LDP IGP synchronization on the network.
- C. Configure LDP sessions protection on the network.
- D. Disable MPLS LDP IGP synchronization on the network.

**Answer: B**

### NEW QUESTION 305

A network architect must implement CSC VPN services for a new backbone carrier. Which two benefits does the architecture provide? (Choose two.)

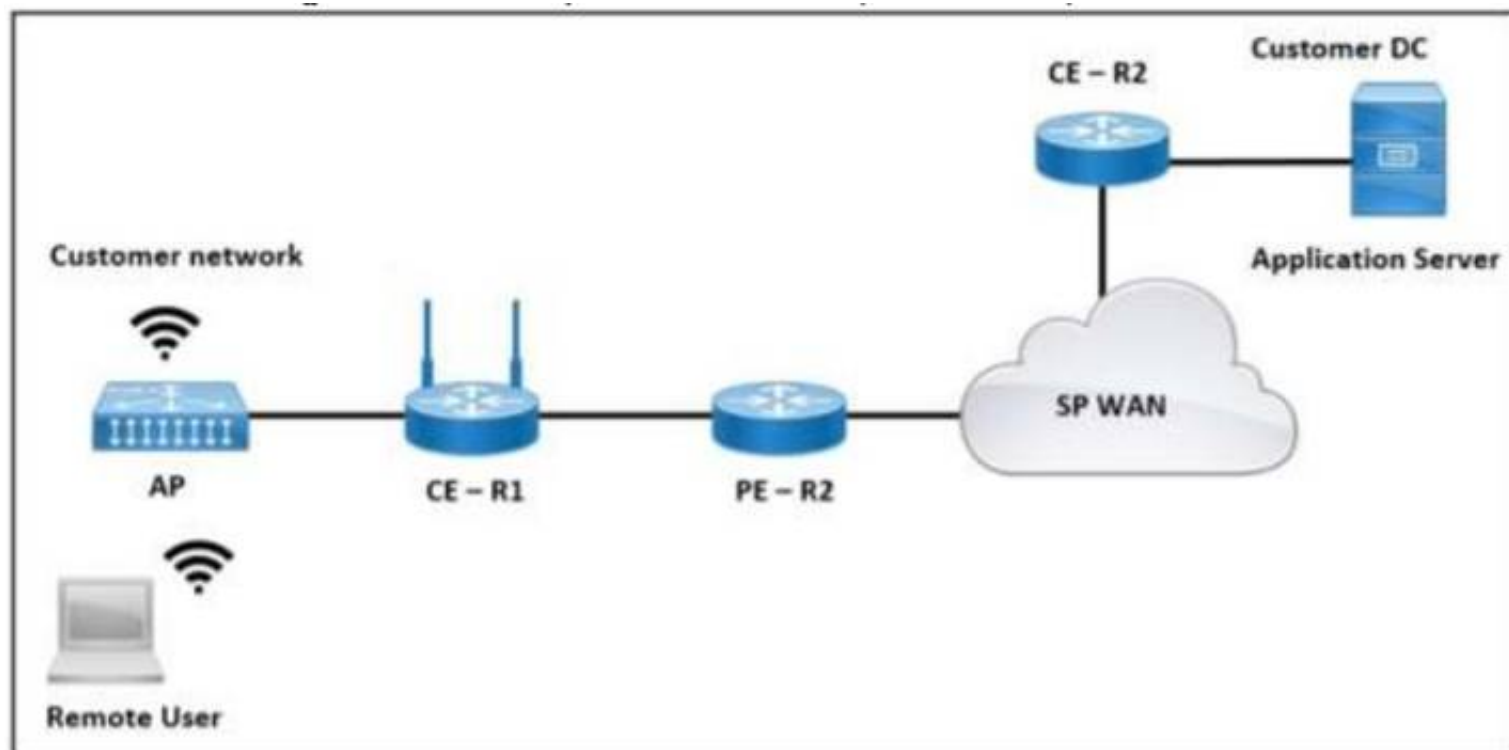
- A. It maintains a single backbone, which simplifies the VPN implementation to customers.
- B. It eliminates the need to maintain a centralized network-maintenance and operations strategy.
- C. It leverages IPsec to establish connections within the backbone.
- D. which eliminates the need for BGP to distribute routes.
- E. It supports a scalable growth strategy that services multiple customers efficiently.
- F. It relies on IP communications, which simplifies the network design.

**Answer: AD**

### NEW QUESTION 308



Refer to the exhibit.



The application server in the data center hosts voice, video, and data applications over the internet. The data applications run more slowly than the voice and video applications. To ensure that all applications run smoothly, the service provider decided to implement a QoS policy on router PER 2 to apply traffic shaping. Which two actions must an engineer take to implement the task? (Choose two.)

- A. Configure the scheduling function to handle delayed packets.
- B. Enable packet remarking for priority traffic.
- C. Configure a queue to buffer excess traffic.
- D. Set the token value for secondary traffic.
- E. Set a threshold to discard excess traffic.

**Answer:** AC

#### NEW QUESTION 313

Which statement about Network Services Orchestrator (NSO) is true?

- A. It is used only in service provider environments
- B. It can be used only with XML coding
- C. It uses YANG modeling language to automate devices
- D. It must use SDN as an overlay for addressing

**Answer:** C

#### NEW QUESTION 317

What is the primary role of Ansible in a network?

- A. It is used as a debugging tool for connectivity issues between the DMZ and an enterprise intranet.
- B. It is used to diagnose Layer 1 issues in data centers that span more than one city block.
- C. It is used to deploy IPv6 configuration in networks that are dual stack.
- D. It is used as a network automation provisioning and configuration tool.

**Answer:** D

#### NEW QUESTION 322

How can a network administrator secure REST APIs?

- A. They can allow read and write privileges to all users
- B. They can ensure that user sessions are authenticated using TACACS+ only
- C. They can have a general administrator login for multiple users to access that has command entries logged
- D. They can authenticate user sessions and provide the appropriate privilege level

**Answer:** D

#### NEW QUESTION 324

The network-engineering team of a service provider is integrating several recently acquired networks into a more scalable common Unified MPLS architecture. The new network architecture will support end-to-end VPNv4 and VPNv6 services with these requirements:

- The IGP of the core layer is IS-IS in Area 0.
- The IGP of the aggregation layers is OSPF in Area 0.
- The LDP protocol is used to distribute label bindings within each IGP domain.

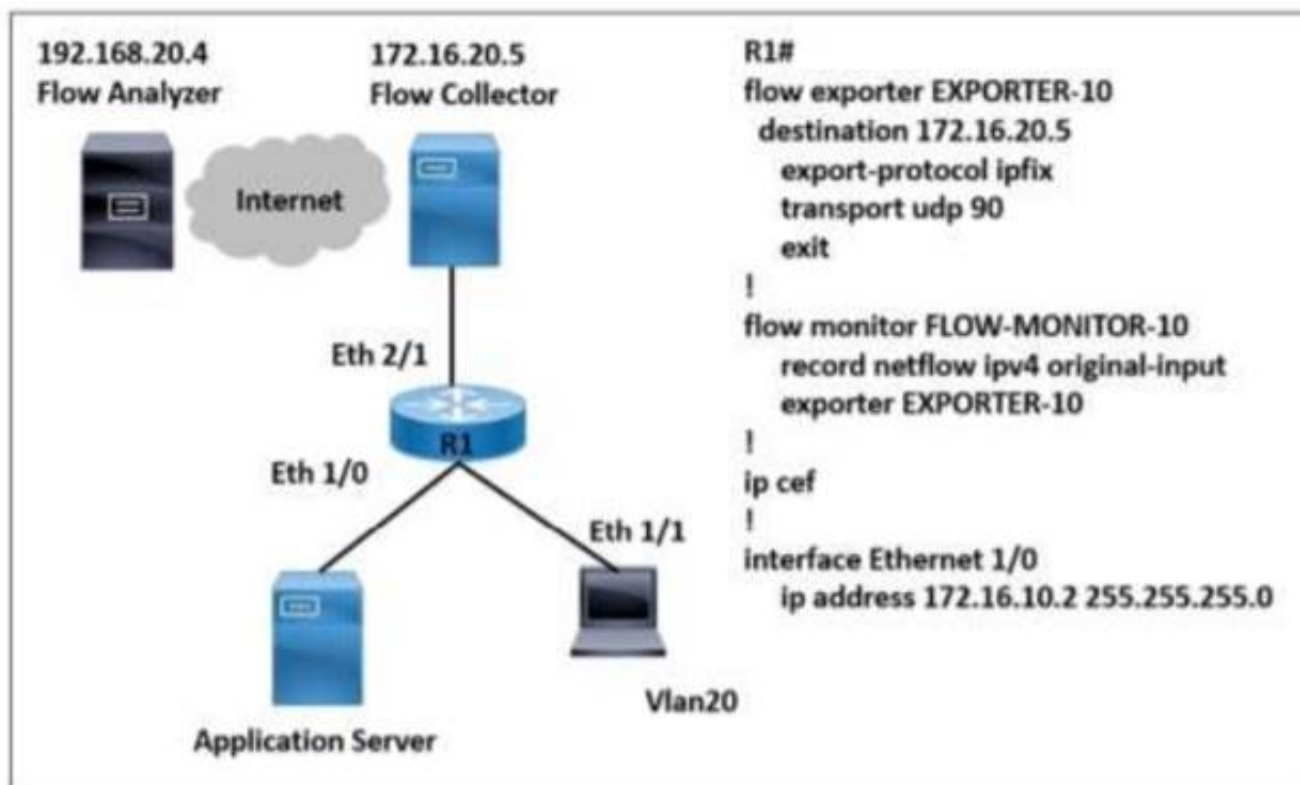
Which task must the network engineer perform when implementing this new architecture?

- A. Configure BGP-LU between ABR routers of each IGP domain to carry MPLS label information in NLRI.
- B. Configure a BGP session between the ABR routers of each IGP domain to exchange VPNv4 or VPNv6 prefixes
- C. Configure the ABR in each IGP domain to preserve next-hop information on all VPNv4 and VPNv6 prefixes advertised by the PE.
- D. Configure mutual redistribution of each IGP domain's loopback prefix to provide end-to-end LDP LSP

**Answer:** A

#### NEW QUESTION 329

Refer to the exhibit.



A network engineer wants to monitor traffic from the application server and send the output to the external monitoring device at 172.16.20.5. Application server traffic should pass through the R1 Eth2/1 interface for further analysis after it is monitored. Which configuration must be applied on the R1 router?

- A. Configure the FLOW-MONITOR-20 command.
- B. Configure the flow exporter EXPORTER-10 destination 192.168.20.4 command.
- C. Configure the ip flow monitor FLOW-MONITOR-10 input command on the Ethernet1/0 interface.
- D. Configure the ip flow monitor FLOW-MONITOR-10 output command on the Ethernet 2/1 interface.

**Answer: C**

#### NEW QUESTION 334

An engineer is trying to implement BGP in a multihomed architecture. What must the engineer configure to influence inbound path selection?

- A. A route map with WEIGHT attribute to control the inbound traffic.
- B. An offset list to set the metric for routes received from neighboring autonomous systems.
- C. An access list to identify traffic and enable it on both of the provider-facing interfaces.
- D. A route map with AS\_PATH attribute to control the inbound traffic.

**Answer: D**

#### NEW QUESTION 336

Refer to the exhibit.

```

Router(config)# ip access-list standard Suppressed
Router(config-std-nacl)# permit 10.16.6.0 0.0.0.255
Router(config)# route-map SuppressMap
Router(config-route-map)# match ip address Suppressed

```

An engineer is implementing BGP selective prefix suppression. The router must advertise only 10.16.4.0/24, 10.16.5.0/24, and summarized route 10.16.0.0/21, and suppress 10.16.6.0/24. Which configuration must the engineer apply to the router?

A)

```

Router (config)# router bgp 300
Router(config-router)# aggregate-address 10.16.6.0 255.255.252.0 as-set suppress-map SuppressMap

```

B)

```

Router (config)# router bgp 300
Router(config-router)# aggregate-address 10.16.0.0 255.255.248.0 as-set suppress-map SuppressMap

```

C)

```

Router (config)# router bgp 300
Router(config-router)# aggregate-address 10.16.6.0 255.255.255.0 as-set suppress-map SuppressMap

```

D)

```

Router (config)# router bgp 300
Router(config-router)# aggregate-address 10.16.0.0 255.255.255.0 as-set suppress-map unSuppressMap

```

- A. Option A
- B. Option B
- C. Option C

D. Option D

**Answer:** B

#### NEW QUESTION 340

What is the characteristic of the TI-LFA?

- A. It guarantees a loop-free path for all interfaces in the OSPF- super backbone .
- B. It applies on each area and instance and makes all the interfaces inherit the configuration
- C. It guarantees a loop-free path for all areas configured m OSPF
- D. It applies only on the instance and makes at the interfaces inherit the configuration

**Answer:** A

#### NEW QUESTION 342

A network engineer is configuring a BGP route policy for the SUBNET prefix set. Matching traffic must be dropped, and other traffic must have its MED value set to 400 and community 4:400 added to the route. Which configuration must an engineer apply?

- ☒ route-policy CISCO  
if destination in SUBNET then  
drop  
else  
set med 400  
set community (4:400) additive  
endif  
end-policy  
end
- ☐ route-policy CISCO  
if destination in SUBNET then  
drop  
endif  
set med 400  
if community matches-any SUBNET then  
set local-preference 400  
set med 500  
set community (4:400) additive  
endif  
end-policy  
end
- ☐ route-policy SUBNET  
if destination in SUBNET then  
drop  
endif  
set med 400  
set local-preference 400  
if community matches-any SUBNET then  
set community (4:400)  
endif  
end-policy  
end
- ☐ route-policy SUBNET  
if destination in BGP then  
drop  
else  
set med 400  
set community (4:400)  
endif  
end-policy  
end

- A. Option A
- B. Option B
- C. Option C
- D. Option D

**Answer:** A

#### NEW QUESTION 343

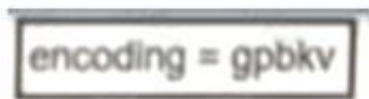
Which feature will an operator use while implementing MPLS TE on customer's network, to prevent an LSP from using any overseas inks?

- A. bandwidth
- B. affinity
- C. explicit path
- D. SLRG

**Answer:** C

**NEW QUESTION 345**

Refer to the exhibit.



```
encoding = gpbkv
```

An engineer applied a gRPC dial-in configuration on customer's router to provide connection multiplexing and two-way streaming. What does this configuration accomplish in a gRPC?

- A. It is the encoding requested by the gRPC server.
- B. It is the encoding that is used for dial-in and dial-out.
- C. It is used for encoding with the default protocol buffers
- D. It is the encoding requested by the gRPC client.

**Answer:** A

**Explanation:**

<https://www.ciscolive.com/c/dam/r/ciscolive/emea/docs/2019/pdf/BRKNMS-3537.pdf> <https://xrdocs.io/telemetry/tutorials/2018-03-01-everything-you-need-to-know-about-pipeline/> <https://community.cisco.com/t5/service-providers-documents/implementing-grpc-telemetry-on-xr-devices/ta-p/3>

**NEW QUESTION 346**

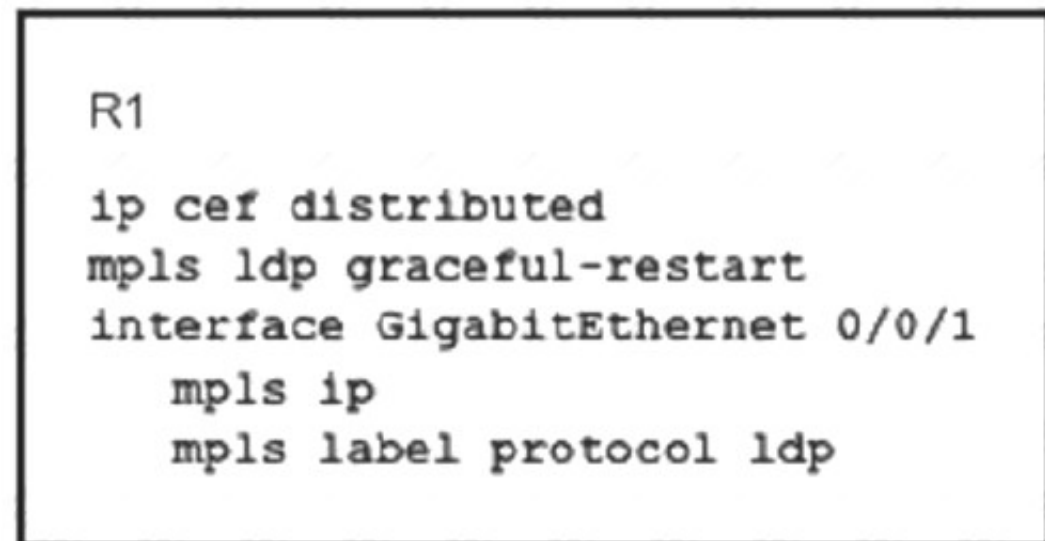
What is a role of NSO?

- A. It automates the deployment of access points with its built-in wireless LAN controller.
- B. It manages WAN infrastructure using a virtual switch.
- C. It provides full lifecycle management of a device.
- D. It resides on a hypervisor that runs the Windows OS.

**Answer:** C

**NEW QUESTION 351**

Refer to the exhibit.



```
R1
ip cef distributed
mpls ldp graceful-restart
interface GigabitEthernet 0/0/1
 mpls ip
 mpls label protocol ldp
```

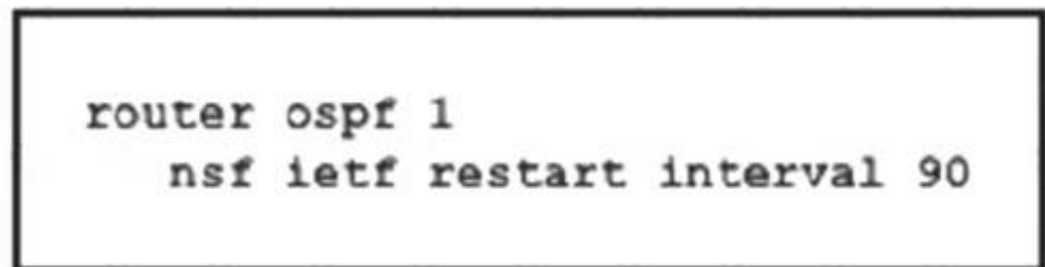
What is the effect of this configuration?

- A. R1 supports a graceful restart operation on the peer, even if graceful restart is disabled on the peer.
- B. R1 supports a peer that is configured for LDP SSO/NSF as the peer recovers from an outage.
- C. R1 failovers only to a peer that is configured for LDP SSO/NSF.
- D. R1 failovers to any peer.

**Answer:** B

**NEW QUESTION 355**

Refer to the exhibit:



```
router ospf 1
 nsf ietf restart interval 90
```

Which purpose of implementing NSF with this configuration is true?

- A. The router uses NSF to load balance traffic between two links, with the primary link alternating every 90 seconds
- B. The router uses NSF to reduce neighbor-relationship downtime during RP switchover
- C. The router uses NSF to load balance traffic on a routed EtherChannel
- D. The router uses NSF to handle RP switchover while allowing neighbor relationships to remain up

**Answer:** D



### NEW QUESTION 359

Refer to the exhibit:

```
PE-A#show ip bgp vpnv4 vrf Customer-A neighbors 10.10.10.2 routes
BGP table version is 13148019, local router ID is 10.10.10.10
Status codes: s suppressed, d damped, h history, * valid, > best, i - internal,
               r RIB-failure, S Stale, m multipath, b backup-path, f RT-Filter,
               x best-external, a additional-path, c RIB-compressed,
Origin codes: i - IGP, e - EGP, ? - incomplete
RPKI validation codes: V valid, I invalid, N Not found

   Network          Next Hop          Metric LocPrf Weight Path
Route Distinguisher: 65000:1111 (default for vrf Customer-A)
*> 192.168.0.0/19    10.10.10.2            0             0 4282 65001 ?
*> 192.168.0.0/17    10.10.10.2            0             0 4282 65001 ?
*> 192.168.0.0/16    10.10.10.2            0             0 4282 65001 ?

Total number of prefixes 5

PE-A#config t
Enter configuration commands, one per line. End with CNTL/Z.
PE-A(config)#ip prefix-list ALLOW permit 192.168.0.0/16 ge 17 le 19
PE-A(config)#router bgp 65000
PE-A(config-router)#address-family ipv4 vrf Customer-A
PE-A(config-router-af)#neighbor 10.10.10.2 prefix-list ALLOW in
```

Which three outcomes occur if the prefix list is added to the neighbor? (Choose three)

- A. 192.168 0.0/19 is denie
- B. 192.168 0.0/17 is denied.
- C. 192.168 0.0/17 is permitted
- D. 192.168.0.0/16 is denied
- E. 192.168 0.0/16 is permitted
- F. 192.168 0.0/19 is permitted

**Answer:** CDF

### NEW QUESTION 360

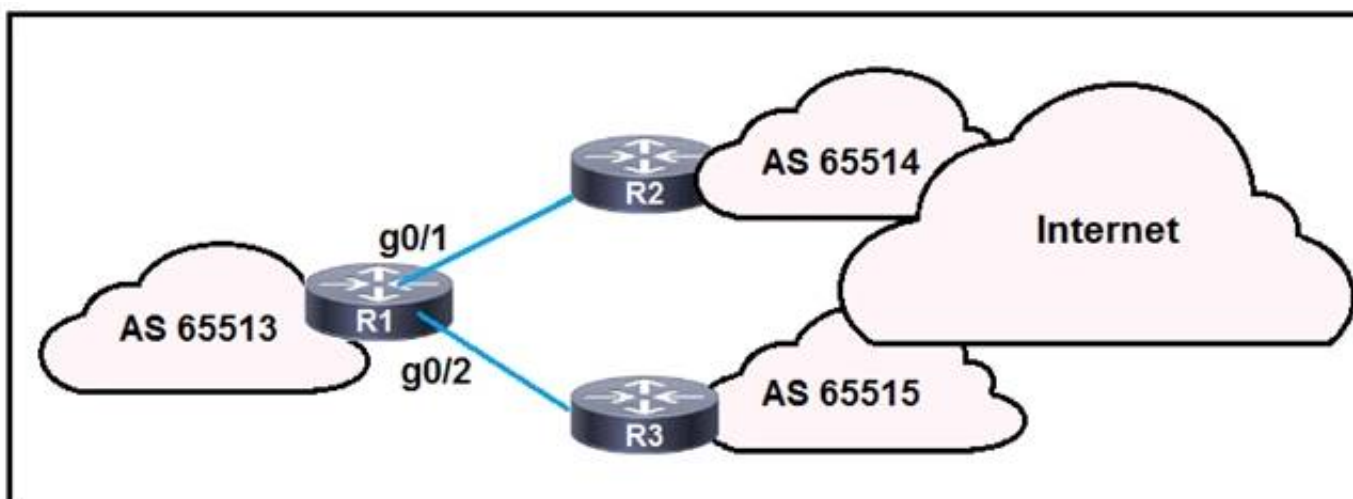
What is a characteristic of data modeling language?

- A. It provides an interface for state data.
- B. It separates configuration and state data.
- C. It ensures devices are individually configured.
- D. It replaces SNMP.

**Answer:** B

### NEW QUESTION 361

Refer to the exhibit:



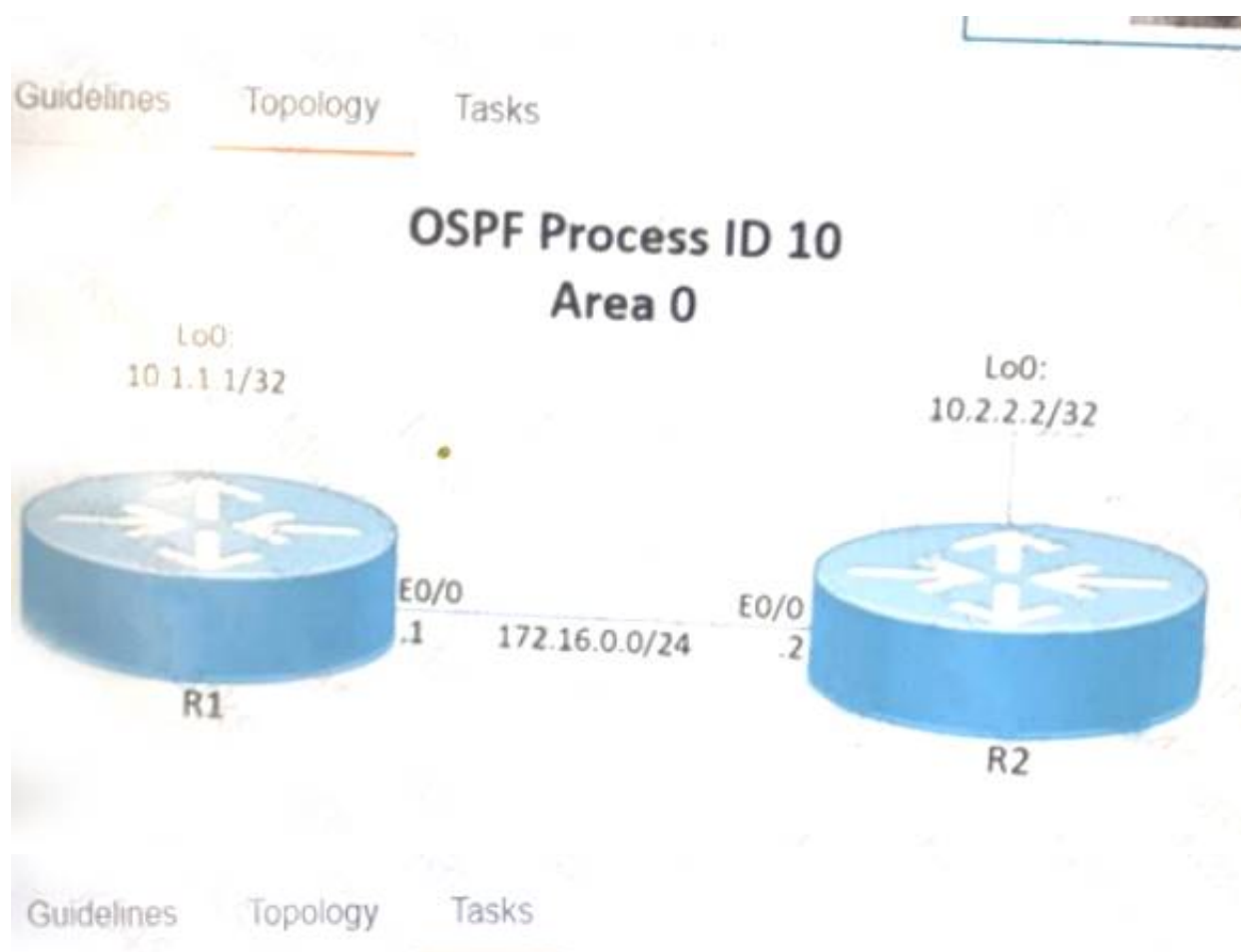
R1 is connected to two service providers and is under a DDoS attack Which statement about this design is true if uRPF in strict mode is configured on both interfaces?

- A. R1 accepts source addresses on interface gigabitethernet0/1 that are private addresses
- B. R1 permits asymmetric routing as long as the AS-RATH attribute entry matches the connected AS
- C. R1 drops destination addresses that are routed to a null interface on the router
- D. R1 drops all traffic that ingresses either interface that has a FIB entry that exits a different interface

**Answer:** D

### NEW QUESTION 366

Simulation 3



Configure and verify the OSPF neighbor adjacency between R1 and R2 in OSPF area 0 according to the topology to achieve these goals:

1. Establish R1 and R2 OSPF adjacency. All interfaces must be advertised in OSPF by using the OSPF interface command method. Use Loopback0 as the OSPF ID.
2. There must be no DR/BDR elections in OSPF Area 0 when establishing the neighbor relationship between R1 and R2. OSPF must not generate the host entries /32 for the adjacent interfaces.
3. Enable OSPF MD5 Authentication between both routers at the interface level with password **C1sc0!**.

- A. Mastered
- B. Not Mastered

**Answer:** A

**Explanation:**

TASK1: Run "sh run" command on both routers, check if there is any "router ospf" configured. If it's configured, check if Loopback0 ip it's being used as OSPF ID. If it's, jump to TASK2. Otherwise run:

R1  
router ospf 10  
router-id 10.1.1.1

R2  
router ospf 10  
router-id 10.2.2.2

TASK2:

R1 & R2  
int lo0  
ip ospf 10 area 0  
ip ospf network point-to-point  
!

int e0/0  
ip ospf network point-to-point ip ospf 10 area 0  
ip ospf authentication message-digest  
ip ospf message-digest-key 1 md5 C1sc0!  
!

**NEW QUESTION 369**

BGP has been implemented on a IOS XR router. Which configuration sends BGP IPv4 labels to build inter-domain LSPs?

- A. router bgp 65515 address-family ipv4 unicast neighbor 172.16.70.23 send-community extended
- B. router bgp 65515 no bgp default ipv4-unicast

- C. router bgp 65515 address-family ipv4 unicast neighbor 172.16.70.23 send-community
- D. router bgp 65515 neighbor 172.16.70.23 address-family ipv4 labeled-unicast

Answer: D

**NEW QUESTION 372**

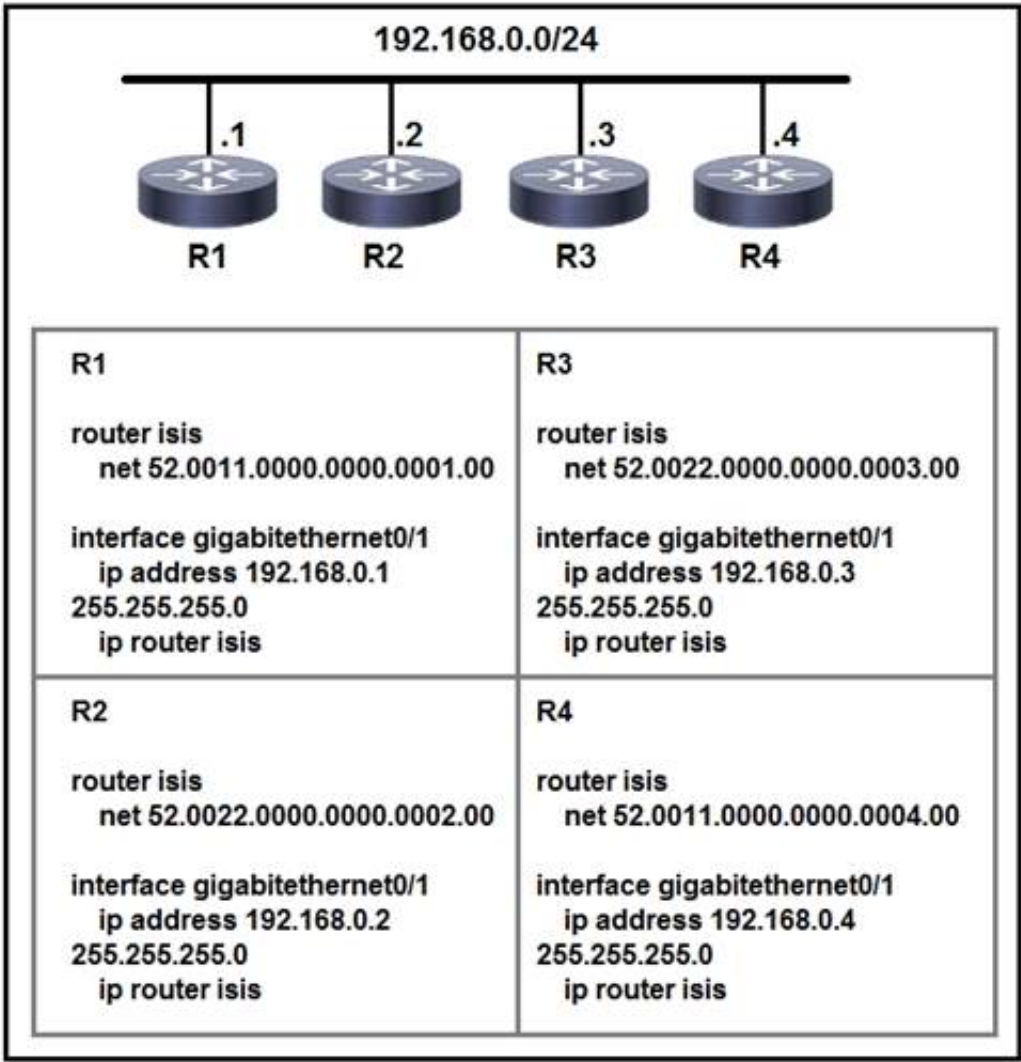
A network engineer is implementing NetFlow to observe traffic patterns on the network. The engineer is planning to review the patterns to help plan future strategies for monitoring and preventing congestion as the network grows. If the captures must include BGP next-hop flows, which configuration must the engineer apply to the router?

- A. ip cefip flow-export version 5 bgp-nexthopip flow-export destination 192.168.1.1 9995 interface gigabitethernet 1/0/1ip flow egress
- B. ip cefip flow-export version 9 bgp-nexthopip flow-export destination 192.168.1.1 9996 interface gigabitethernet 1/0/1ip flow ingress
- C. ip cefip flow-export version 5ip flow-export destination 192.168.1.1 9995 interface gigabitethernet 1/0/1ip flow ingresscdp enable
- D. no ip cefip flow-export version 9ip flow-export destination 192.168.1.1 9996 interface gigabitethernet 1/0/1ip flow ingress ip flow egress

Answer: B

**NEW QUESTION 373**

Refer to the exhibit:



Which two statements about the ISIS topology are true? (Choose two.)

- A. All four routers are operating as Level 1 routers only.
- B. All four routers are operating as Level 2 routers only.
- C. All four routers are operating as Level 1-2 routers.
- D. R1 and R2 are Level 2 neighbors.
- E. R1 and R4 are Level 2 neighbors

Answer: CD

**NEW QUESTION 374**

An engineer is implementing MPLS to monitor within the MPLS domain. Which must the engineer perform to prevent packets from being forwarded beyond the service provider domain when the LSP is down?

- ☒ Disable IP redirects only on outbound interfaces.
- ☐ Implement the destination address for the LSP echo request packet in the 127 x y z/8 network.
- ☐ Disable IP redirects on all ingress interfaces.
- ☐ Configure a private IP address as the destination address of the headend router of Cisco MPLS TE.

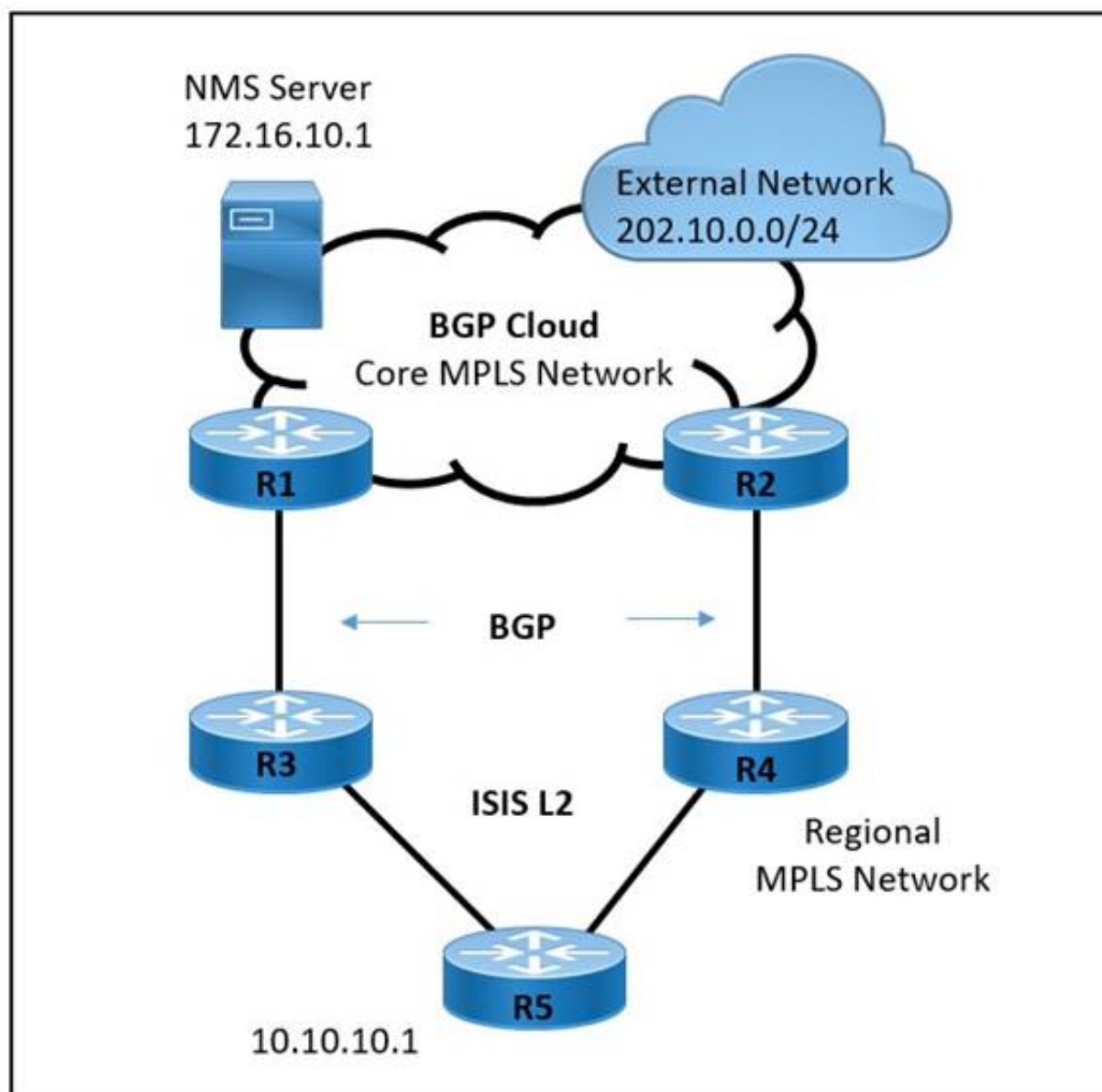
- A. Option A
- B. Option B
- C. Option C
- D. Option D

Answer: B



**NEW QUESTION 376**

Refer to the exhibit.



A large service provider is migrating device management from Layer 2 VLAN-based to Layer 3 IP-based solution. An engineer must configure the ISIS solution with these requirements:

Network management server IP 172.16.10.1 must be advertised from the core MPLS network to the regional domain.

The external network 202.10.0.0/24 must not establish ISIS peering with the R5 router.

The regional network must prevent sending unnecessary hello packets and flooding the routing tables of the R5 router.

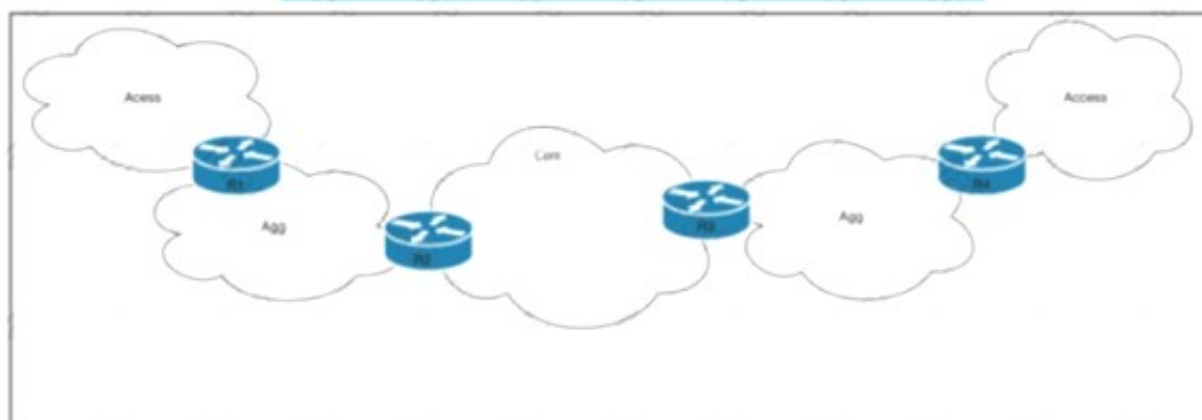
Which two ISIS parameters must be implemented to meet these requirements? (Choose two.)

- A. LSP lifetime maximum
- B. advertise-passive-only
- C. overload bit passive
- D. attached bit on ISIS instance
- E. passive-interface Loopback0

**Answer: AD**

**NEW QUESTION 378**

Refer to the exhibit.



Tier 1 ISP A purchased several Tier 2 ISPs to increase their customer base and provide more regional coverage. ISP A plans to implement MPLS services in the access layer, with scalability up to 100.1 devices in one packet network and service recovery up to 50 ms. The network architect decided to use different independent IGP and LDP domains and interconnect LSPs that are based on RFC 3107. Which two actions must the network engineer perform to meet the requirements? (Choose two.)

- A. Implement BGP PIC core functionality on routers R2 and R3.
- B. Configure three OSPF areas, with Area 0 in the core domain, and Areas 2 and 3 in the aggregation domain.
- C. Implement BGP connectivity between routers R1 and R4 with VPNv4 address family enabled.
- D. Implement BGP inline RR functionality with next-hop-self capabilities on routers R2 and R3.
- E. Implement the IS-IS routing protocol on the access domain.

**Answer: AD**

**NEW QUESTION 382**



A network engineer is implementing BFD configuration changes on a customer's equipment. How is the bfd interval configuration on the interface disconnected?

- A. The status of the interface changes.
- B. The IPv4 or IPv6 address configuration on the interface changes.
- C. It is automatically disconnected when the BFD-configured subinterface is removed.
- D. It is automatically disconnected when the BFD main interface is removed.

**Answer:** D

#### NEW QUESTION 385

What is the function of the FEC field within the OTN signal structure?

- A. It allows the sending devices to apply QoS within the OTN forwarding structure.
- B. It allows source nodes to discard payload errors before transmitting data on the network.
- C. It allows receivers to correct errors upon data arrival.
- D. It allows deep inspection of data payload fields.

**Answer:** C

#### NEW QUESTION 386

A network engineer is configuring RIP as the routing protocol between multiple PEs and CEs. The engineer must avoid advertising the same routes back to their sources. Which action should be performed on the routers to accomplish this task?

- A. Configure a different route distinguisher for each prefix.
- B. Define the site of origin on each interface.
- C. Define VRFs on each device to separate the traffic.
- D. Enable bidirectional forwarding detection on each device.

**Answer:** B

#### Explanation:

Although the SoO is set on BGP address family configuration mode not interface mode, but it is applied to the interface based on this reference. "The configuration of the SoO extended community allows MPLS VPN traffic to be filtered on a per-site basis. The SoO extended community is configured in an inbound BGP route map on the PE router and is applied to the interface."

[https://www.cisco.com/c/en/us/td/docs/switches/lan/catalyst3850/software/release/16-12/configuration\\_guide/m](https://www.cisco.com/c/en/us/td/docs/switches/lan/catalyst3850/software/release/16-12/configuration_guide/m)

#### NEW QUESTION 390

A company needs to improve the use of the network resources that is used to deploy internet access service to customers on separate backbone and internet access network. Which two major design models should be used to configure MPLS L3VPNs and internet service in the same MPLS backbone? (Choose two.)

- A. Carriage of full internet routes in a VPN, in the case of internet access VPNS
- B. Internet routing through global routing on a PE router.
- C. Internet access routing as another VPN in the ISP network.
- D. Internet access through leaking of internet routed from the global table into the L3VPN VRF
- E. Internet access for global routing via a separate interface in a VRF

**Answer:** CE

#### Explanation:

<http://etuto>

<http://etuto>  
[rials.org/Networking/MPLS+VPN+security/Part+II+Advanced+MPLS+VPN+Security+Issues/Chapter+4.+Secu](http://etuto)

#### NEW QUESTION 394

Which additional feature does MPLS DiffServ tunneling support?

- A. matching EXP and DSCP values
- B. interaction between MPLS and IGP
- C. using GRE tunnels to hide markings
- D. PHB layer management

**Answer:** D

#### Explanation:

[https://www.cisco.com/c/en/us/td/docs/ios-xml/ios/mp\\_te\\_diffserv/configuration/15-mt/mp-te-diffserv-15-mt-bo](https://www.cisco.com/c/en/us/td/docs/ios-xml/ios/mp_te_diffserv/configuration/15-mt/mp-te-diffserv-15-mt-bo)

#### NEW QUESTION 397

In an EVPN operation, how does the PE determine and advertise Ethernet segment reachability?

- A. The PE discovers the remote PEs in the EVI and builds a flood list linked with the EVI.
- B. The PE discovers and shared routing information for the B-MAC addresses associated with local Ethernet segments.
- C. The PE discovers other PEs in the same Ethernet segment and elects a DF.
- D. The PE discovers remote ESIs and determines their redundancy mode.

**Answer:** A

#### NEW QUESTION 402

.....

## Thank You for Trying Our Product

\* 100% Pass or Money Back

All our products come with a 90-day Money Back Guarantee.

\* One year free update

You can enjoy free update one year. 24x7 online support.

\* Trusted by Millions

We currently serve more than 30,000,000 customers.

\* Shop Securely

All transactions are protected by VeriSign!

**100% Pass Your 350-501 Exam with Our Prep Materials Via below:**

<https://www.certleader.com/350-501-dumps.html>