

Cisco

Exam Questions 350-201

Performing CyberOps Using Core Security Technologies (CBRCOR)



NEW QUESTION 1

The physical security department received a report that an unauthorized person followed an authorized individual to enter a secured premise. The incident was documented and given to a security specialist to analyze. Which step should be taken at this stage?

- A. Determine the assets to which the attacker has access
- B. Identify assets the attacker handled or acquired
- C. Change access controls to high risk assets in the enterprise
- D. Identify movement of the attacker in the enterprise

Answer: D

NEW QUESTION 2

A malware outbreak is detected by the SIEM and is confirmed as a true positive. The incident response team follows the playbook to mitigate the threat. What is the first action for the incident response team?

- A. Assess the network for unexpected behavior
- B. Isolate critical hosts from the network
- C. Patch detected vulnerabilities from critical hosts
- D. Perform analysis based on the established risk factors

Answer: B

NEW QUESTION 3

How is a SIEM tool used?

- A. To collect security data from authentication failures and cyber attacks and forward it for analysis
- B. To search and compare security data against acceptance standards and generate reports for analysis
- C. To compare security alerts against configured scenarios and trigger system responses
- D. To collect and analyze security data from network devices and servers and produce alerts

Answer: D

NEW QUESTION 4

Drag and drop the phases to evaluate the security posture of an asset from the left onto the activity that happens during the phases on the right.

Answer Area

vulnerability assessment	gathering information on a target for future use
persistence	probing the target to discover operating system details
exploit	confirming the existence of known vulnerabilities in the target system
cover tracks	using previously identified vulnerabilities to gain access to the target system
reconnaissance	inserting backdoor access or covert channels to ensure access to the target system
enumeration	erasing traces of actions in audit logs and registry entries

- A. Mastered
- B. Not Mastered

Answer: A

Explanation:

Answer Area

vulnerability assessment	persistence
persistence	reconnaissance
exploit	vulnerability assessment
cover tracks	exploit
reconnaissance	enumeration
enumeration	cover tracks

NEW QUESTION 5

Drag and drop the mitigation steps from the left onto the vulnerabilities they mitigate on the right.

Answer Area

Restrict administrative access to operating systems and applications in accordance with job duties	End-user desktops allow the execution of non-approved applications that include malicious code
Use multifactor authentication for remote access or accessing sensitive information	Application security vulnerabilities can be used to execute malicious code
Change backup and store software and configuration settings for at least three months	Privilege accounts have full rights to information systems
Patch applications including flash, web browsers, and PDF viewers	User verification is weak and based on a single factor
Utilize application control to stop malware delivery and execution	Data or access loss occurs due to cybersecurity incidents

- A. Mastered
- B. Not Mastered

Answer: A

Explanation:

Answer Area

Restrict administrative access to operating systems and applications in accordance with job duties

Use multifactor authentication for remote access or accessing sensitive information

Change backup and store software and configuration settings for at least three months

Patch applications including flash, web browsers, and PDF viewers

Utilize application control to stop malware delivery and execution

Utilize application control to stop malware delivery and execution

Patch applications including flash, web browsers, and PDF viewers

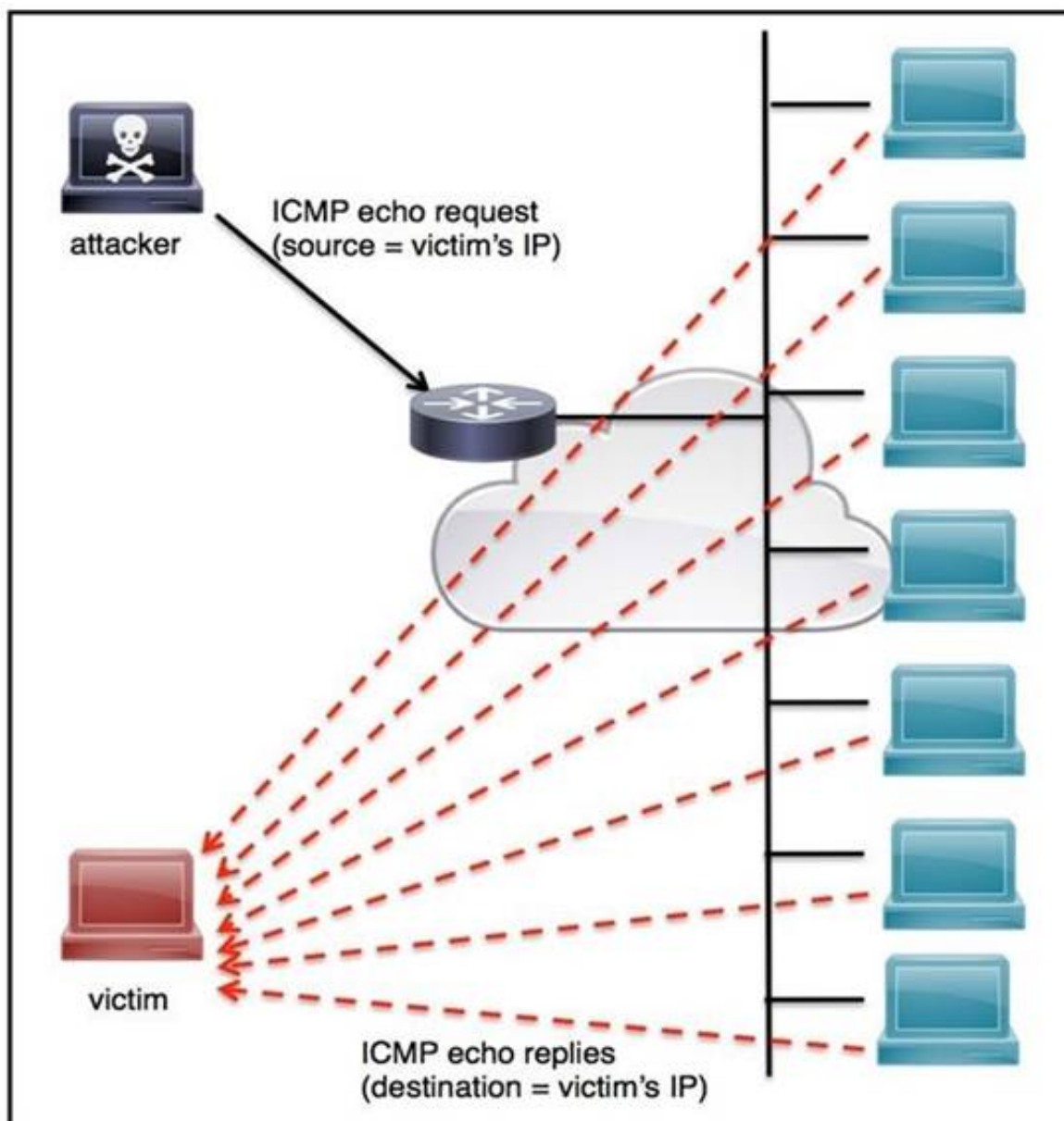
Restrict administrative access to operating systems and applications in accordance with job duties

Use multifactor authentication for remote access or accessing sensitive information

Change backup and store software and configuration settings for at least three months

NEW QUESTION 6

Refer to the exhibit.



An engineer must tune the Cisco IOS device to mitigate an attack that is broadcasting a large number of ICMP packets. The attack is sending the victim's spoofed source IP to a network using an IP broadcast address that causes devices in the network to respond back to the source IP address. Which action does the engineer recommend?

- A. Use command `ip verify reverse-path interface`
- B. Use global configuration command `service tcp-keepalives-out`
- C. Use subinterface command `no ip directed-broadcast`
- D. Use logging trap 6

Answer: A

NEW QUESTION 7

Refer to the exhibit.

URIs:

- /invoker/JMXInvokerServlet
- /CFIDE/adminapi
- /?a=<script>alert%28%22XSS%22%29%3B</script>&b=UNION+SELECT+ALL+FROM+information_schema+AND+%27+or+SLEEP%285%29+or+%27&c=../../../../etc/passwd

At which stage of the threat kill chain is an attacker, based on these URIs of inbound web requests from known malicious Internet scanners?

- A. exploitation
- B. actions on objectives
- C. delivery
- D. reconnaissance

Answer: C

NEW QUESTION 8

Refer to the exhibit.

```
{
  "type": "bundle",
  "id": "bundle--56be2a39",
  "objects": [
    {
      "type": "indicator",
      "spec_version": "2.1",
      "id": "indicator--d81f86b9-9f",
      "created": "2020-08-10T13:49:37.079Z",
      "modified": "2020-08-10T13:49:37.079Z",
      "name": "Malicious site hosting downloader",
      "indicator_types": [
        "malicious-activity"
      ],
      "pattern": "[url:value = 'http://y2z7atc.cn/4823/']",
      "pattern_type": "stix",
      "valid_from": "2020-08-10T13:49:37.079Z"
    },
    {
      "type": "malware",
      "spec_version": "2.1",
      "id": "malware--162d9 a",
      "created": "2020-08-13T09:15:17.182Z",
      "modified": "2020-08-13T09:15:17.182Z",
      "name": "y2z7atc backdoor",
      "malware_types": [
        "backdoor",
        "remote-access-trojan"
      ],
      "is_family": false,
      "kill_chain_phases": [
        {
          "kill_chain_name": "mandant-attack-lifecycle-model",
          "phase_name": "establish-foothold"
        }
      ]
    }
  ],
  {
    "type": "relationship",
    "spec_version": "2.1",
    "id": "relationship--864af2e5",
    "created": "2020-08-15T18:03:58.029Z",
    "modified": "2020-08-15T18:03:58.029Z",
    "relationship_type": "indicates",
    "source_ref": "indicator--d81f86b9-975b-4c0b-875e-810c5ad45a4",
    "target_ref": "malware--162d917e07661-4611-b5d6-652791454fca"
  }
]
```

Which indicator of compromise is represented by this STIX?

- A. website redirecting traffic to ransomware server
- B. website hosting malware to download files
- C. web server vulnerability exploited by malware
- D. cross-site scripting vulnerability to backdoor server

Answer: C

NEW QUESTION 9

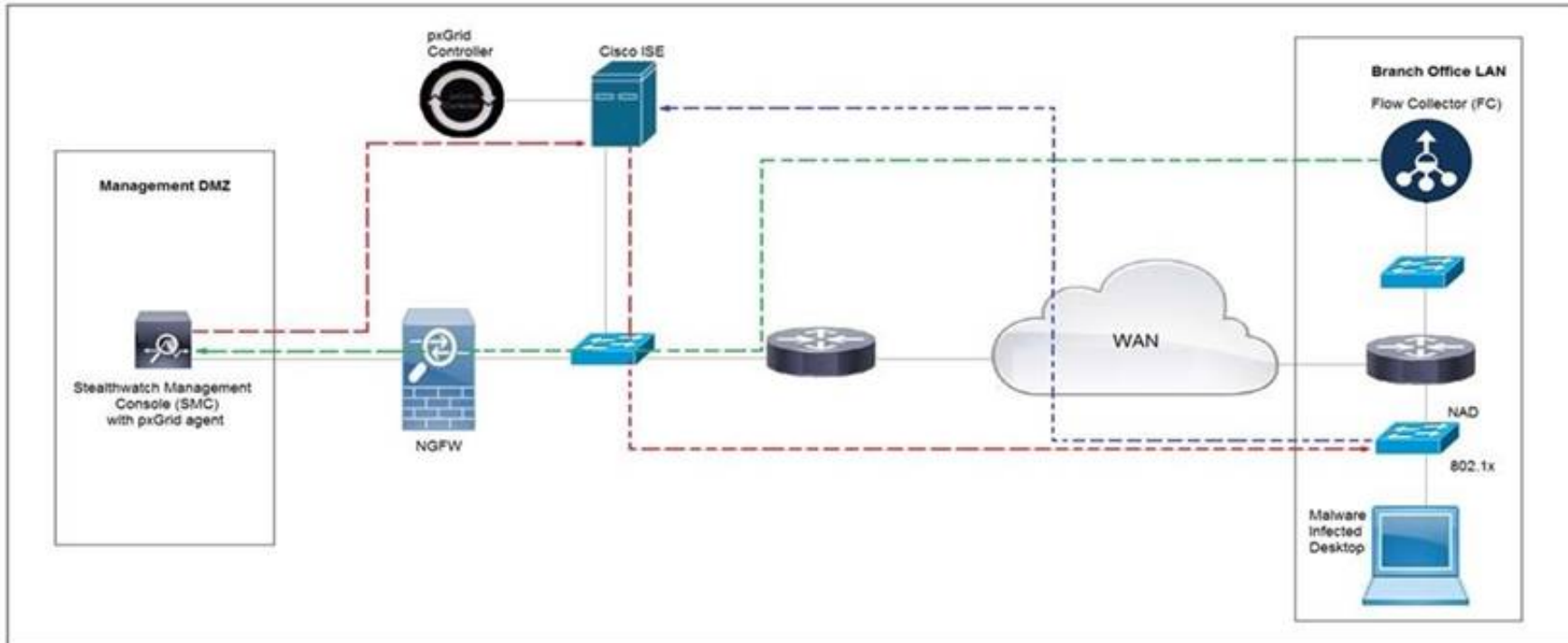
How does Wireshark decrypt TLS network traffic?

- A. with a key log file using per-session secrets
- B. using an RSA public key
- C. by observing DH key exchange
- D. by defining a user-specified decode-as

Answer: A

NEW QUESTION 10

Refer to the exhibit.



Cisco Rapid Threat Containment using Cisco Secure Network Analytics (Stealthwatch) and ISE detects the threat of malware-infected 802.1x authenticated endpoints and places that endpoint into a Quarantine VLAN using Adaptive Network Control policy. Which telemetry feeds were correlated with SMC to identify the malware?

- A. NetFlow and event data
- B. event data and syslog data
- C. SNMP and syslog data
- D. NetFlow and SNMP

Answer: B

NEW QUESTION 10

What do 2xx HTTP response codes indicate for REST APIs?

- A. additional action must be taken by the client to complete the request
- B. the server takes responsibility for error status codes
- C. communication of transfer protocol-level information
- D. successful acceptance of the client's request

Answer: D

NEW QUESTION 11

Refer to the exhibit.



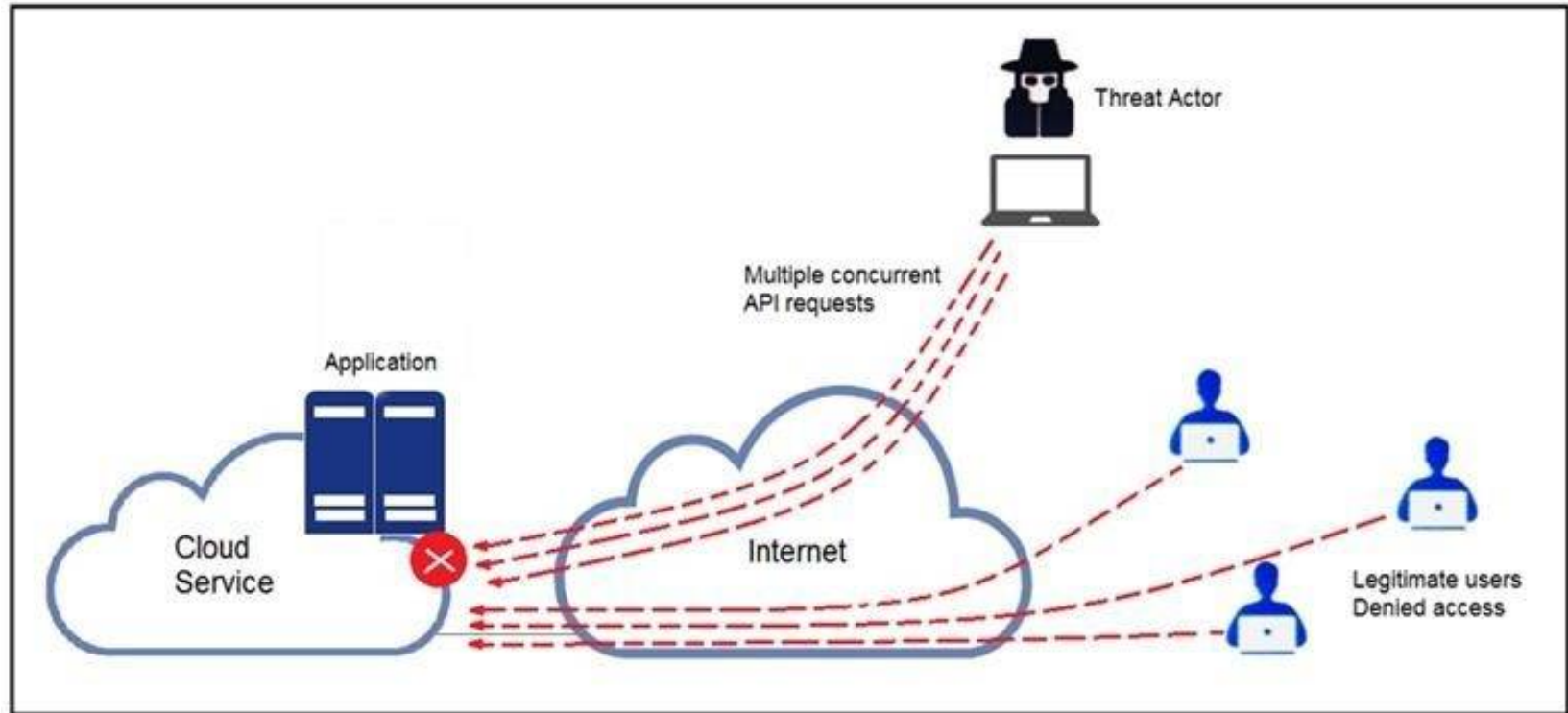
An engineer is investigating a case with suspicious usernames within the active directory. After the engineer investigates and cross-correlates events from other sources, it appears that the 2 users are privileged, and their creation date matches suspicious network traffic that was initiated from the internal network 2 days prior. Which type of compromise is occurring?

- A. compromised insider
- B. compromised root access
- C. compromised database tables
- D. compromised network

Answer: D

NEW QUESTION 14

Refer to the exhibit.



A threat actor behind a single computer exploited a cloud-based application by sending multiple concurrent API requests. These requests made the application unresponsive. Which solution protects the application from being overloaded and ensures more equitable application access across the end-user community?

- A. Limit the number of API calls that a single client is allowed to make
- B. Add restrictions on the edge router on how often a single client can access the API
- C. Reduce the amount of data that can be fetched from the total pool of active clients that call the API
- D. Increase the application cache of the total pool of active clients that call the API

Answer: A

NEW QUESTION 16

An organization installed a new application server for IP phones. An automated process fetched user credentials from the Active Directory server, and the application will have access to on-premises and cloud services. Which security threat should be mitigated first?

- A. aligning access control policies
- B. exfiltration during data transfer
- C. attack using default accounts
- D. data exposure from backups

Answer: B

NEW QUESTION 18

A new malware variant is discovered hidden in pirated software that is distributed on the Internet. Executives have asked for an organizational risk assessment. The security officer is given a list of all assets. According to NIST, which two elements are missing to calculate the risk assessment? (Choose two.)

- A. incident response playbooks
- B. asset vulnerability assessment
- C. report of staff members with asset relations
- D. key assets and executives
- E. malware analysis report

Answer: BE

NEW QUESTION 20

Drag and drop the cloud computing service descriptions from the left onto the cloud service categories on the right.

Answer Area

triggers a block of code when triggered by a specific event

allows renting full servers or virtual machines

focuses on developing, testing, and delivering applications

allows hosting and managing a virtual environment

SaaS

PaaS

IaaS

FaaS

- A. Mastered
- B. Not Mastered

Answer: A

Explanation:

Answer Area

triggers a block of code when triggered by a specific event	focuses on developing, testing, and delivering applications
allows renting full servers or virtual machines	allows hosting and managing a virtual environment
focuses on developing, testing, and delivering applications	allows renting full servers or virtual machines
allows hosting and managing a virtual environment	triggers a block of code when triggered by a specific event

NEW QUESTION 24

An organization lost connectivity to critical servers, and users cannot access business applications and internal websites. An engineer checks the network devices to investigate the outage and determines that all devices are functioning. Drag and drop the steps from the left into the sequence on the right to continue investigating this issue. Not all options are used.

Answer Area

run show access-list	Step 1
run show config	Step 2
validate the file MD5	Step 3
generate the core file	Step 4
verify the image file hash	
check the memory logs	
verify the memory state	

- A. Mastered
- B. Not Mastered

Answer: A

Explanation:

Answer Area

run show access-list	run show config
run show config	check the memory logs
validate the file MD5	verify the memory state
generate the core file	run show access-list
verify the image file hash	
check the memory logs	
verify the memory state	

NEW QUESTION 28

An engineer returned to work and realized that payments that were received over the weekend were sent to the wrong recipient. The engineer discovered that the SaaS tool that processes these payments was down over the weekend. Which step should the engineer take first?

- A. Utilize the SaaS tool team to gather more information on the potential breach
- B. Contact the incident response team to inform them of a potential breach
- C. Organize a meeting to discuss the services that may be affected
- D. Request that the purchasing department creates and sends the payments manually

Answer: A

NEW QUESTION 33

Refer to the exhibit.

```
pragma: no-cache
server: Apache
status: 200
strict-transport-security: max-age=31536000
vary: Accept-Encoding
x-content-type-options: nosniff
x-frame-options: SAMEORIGIN
x-test-debug: nURL=www.cisco.com, realm=0, isRealm=0, realDomain=0, shortrealm=0
x-xss-protection: 1; mode=block
```

Where are the browser page rendering permissions displayed?

- A. x-frame-options
- B. x-xss-protection
- C. x-content-type-options
- D. x-test-debug

Answer: C

NEW QUESTION 38

A SIEM tool fires an alert about a VPN connection attempt from an unusual location. The incident response team validates that an attacker has installed a remote access tool on a user’s laptop while traveling. The attacker has the user’s credentials and is attempting to connect to the network. What is the next step in handling the incident?

- A. Block the source IP from the firewall
- B. Perform an antivirus scan on the laptop
- C. Identify systems or services at risk
- D. Identify lateral movement

Answer: C

NEW QUESTION 40

An engineer notices that unauthorized software was installed on the network and discovers that it was installed by a dormant user account. The engineer suspects

an escalation of privilege attack and responds to the incident. Drag and drop the activities from the left into the order for the response on the right.
Answer Area

Identify systems to be taken offline	Step 1
Conduct content scans	Step 2
Collect log data	Step 3
Request system patch	Step 4
Reimage	Step 5

- A. Mastered
- B. Not Mastered

Answer: A

Explanation:
Answer Area

Identify systems to be taken offline	Conduct content scans
Conduct content scans	Collect log data
Collect log data	Identify systems to be taken offline
Request system patch	Reimage
Reimage	Request system patch

NEW QUESTION 44

A SOC analyst is notified by the network monitoring tool that there are unusual types of internal traffic on IP subnet 103.861.2117.0/24. The analyst discovers unexplained encrypted data files on a computer system that belongs on that specific subnet. What is the cause of the issue?

- A. DDoS attack
- B. phishing attack
- C. virus outbreak
- D. malware outbreak

Answer: D

NEW QUESTION 49

Drag and drop the threat from the left onto the scenario that introduces the threat on the right. Not all options are used.

Answer Area

spoofing attack	installing network devices
broken authentication attack	developing new code
injection attack	implementing a new application
man-in-the-middle attack	changing configuration settings
privilege escalation attack	
default credential attack	

- A. Mastered
- B. Not Mastered

Answer: A

Explanation:

Answer Area

spoofing attack	man-in-the-middle attack
broken authentication attack	injection attack
injection attack	privilege escalation attack
man-in-the-middle attack	default credential attack
privilege escalation attack	
default credential attack	

NEW QUESTION 50

A threat actor used a phishing email to deliver a file with an embedded macro. The file was opened, and a remote code execution attack occurred in a company’s infrastructure. Which steps should an engineer take at the recovery stage?

- A. Determine the systems involved and deploy available patches
- B. Analyze event logs and restrict network access
- C. Review access lists and require users to increase password complexity
- D. Identify the attack vector and update the IDS signature list

Answer: B

NEW QUESTION 51

Refer to the exhibit.

```
def get_umbrella_dispos(domains):
    # put in right format to pass as argument in POST request
    values = str(json.dumps(domains))
    req = requests.post(investigate_url, data=values, headers=headers)
    # time for timestamp of verdict domain
    time = datetime.now().isoformat()
    # error handling if true then the request was HTTP 200, so successful
    if(req.status_code == 200):
        print("SUCCESS: request has the following code: 200\n")
        output = req.json()

        [ ]

    if(domain_status == -1):
        print("The domain %(domain)s is found MALICIOUS at %(time)s\n" % {'domain': domain, 'time': time})
    elif(domain_status == 1):
        print("The domain %(domain)s is found CLEAN at %(time)s\n" %
              {'domain': domain, 'time': time})
    else:
        print("The domain %(domain)s is found UNDEFINED / RISKY at %(time)s\n" %
              {'domain': domain, 'time': time})
    else:
        print("An error has occurred with the following code %(error)s, please consult the following link:
              https://docs.umbrella.com/investigate-api/" %
              {'error': req.status_code})
```

Which code snippet will parse the response to identify the status of the domain as malicious, clean or undefined?

- A.

```
for domain in domains[:]:
    domain_status = domain_output["status"]
```
- B.

```
while domain in domains:
    domain_status = domain_output["status"]
```
- C.

```
for domain in domains:
    domain_output = output[domain]
    domain_status = domain_output["status"]
```
- D.

```
while domains in domains:
    domain_output = output[domain]
    domain_status = domain_output["status"]
```

- A. Option A
- B. Option B
- C. Option C
- D. Option D

Answer: C

NEW QUESTION 53

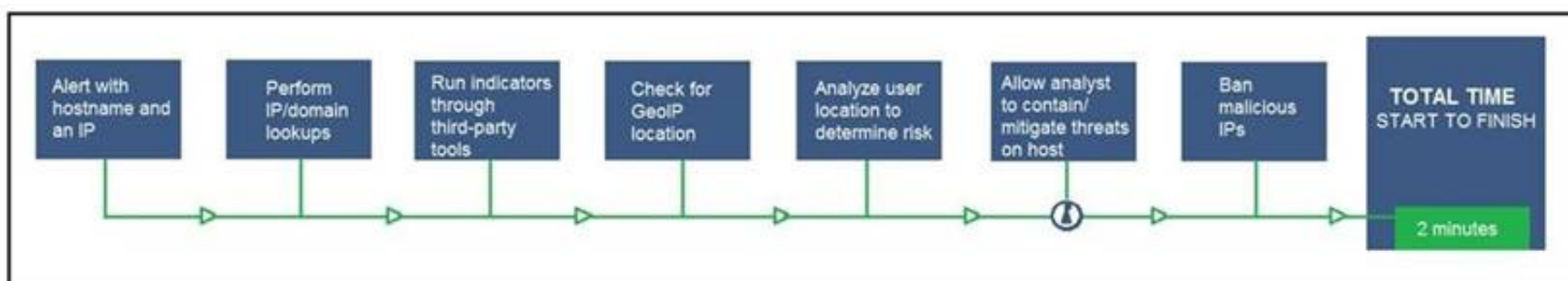
An engineer is developing an application that requires frequent updates to close feedback loops and enable teams to quickly apply patches. The team wants their code updates to get to market as often as possible. Which software development approach should be used to accomplish these goals?

- A. continuous delivery
- B. continuous integration
- C. continuous deployment
- D. continuous monitoring

Answer: A

NEW QUESTION 58

Refer to the exhibit.



An engineer configured this SOAR solution workflow to identify account theft threats and privilege escalation, evaluate risk, and respond by resolving the threat. This solution is handling more threats than Security analysts have time to analyze. Without this analysis, the team cannot be proactive and anticipate attacks. Which action will accomplish this goal?

- A. Exclude the step "BAN malicious IP" to allow analysts to conduct and track the remediation
- B. Include a step "Take a Snapshot" to capture the endpoint state to contain the threat for analysis

- C. Exclude the step “Check for GeoIP location” to allow analysts to analyze the location and the associated risk based on asset criticality
D. Include a step “Reporting” to alert the security department of threats identified by the SOAR reporting engine

Answer: A

NEW QUESTION 61

Refer to the exhibit.

Analysis Report

ID	12cbeee21b1ea4	Filename	fpzryrf.exe
OS	7601.1898.amd64fre.win7sp1_gdr.150316-1654	Magic Type	PE32 executable (GUI) Intel 80386, for MS Windows
Started	7/29/16 18:44:43	Analyzed As	exe
Ended	7/29/16 18:50:39	SHA256	e9ca08a3cc2f8c9748a9e9b304c9f5a16d830066e5467d3dd5927be36fec47da
Duration	0:05:56	SHA1	a2de85810fd5ebcf29c5da5dd29ce03470772ad
Sandbox	phl-work-02 (pilot-d)	MD5	dd07d778edf8d581ffaadb1610aaa008

Warnings

+ Executable Failed Integrity Check

Behavioral Indicators

+ CTB Locker Detected	Severity: 100	Confidence: 100
+ Generic Ransomware Detected	Severity: 100	Confidence: 95
+ Excessive Suspicious Activity Detected	Severity: 90	Confidence: 100
+ Process Modified a File in a System Directory	Severity: 90	Confidence: 100
+ Large Amount of High Entropy Artifacts Written	Severity: 100	Confidence: 80
+ Process Modified a File in the Program Files Directory	Severity: 80	Confidence: 90
+ Decoy Document Detected	Severity: 70	Confidence: 100
+ Process Modified an Executable File	Severity: 60	Confidence: 100
+ Process Modified File in a User Directory	Severity: 70	Confidence: 80
+ Windows Crash Tool Execution Detected	Severity: 20	Confidence: 80
+ Hook Procedure Detected in Executable	Severity: 35	Confidence: 40
+ Ransomware Queried Domain	Severity: 25	Confidence: 25
+ Executable Imported the IsDebuggerPresent Symbol	Severity: 20	Confidence: 20

Cisco Advanced Malware Protection installed on an end-user desktop has automatically submitted a low prevalence file to the Threat Grid analysis engine for further analysis. What should be concluded from this report?

- A. The prioritized behavioral indicators of compromise do not justify the execution of the “ransomware” because the scores do not indicate the likelihood of malicious ransomware.
B. The prioritized behavioral indicators of compromise do not justify the execution of the “ransomware” because the scores are high and do not indicate the likelihood of malicious ransomware.
C. The prioritized behavioral indicators of compromise justify the execution of the “ransomware” because the scores are high and indicate the likelihood that malicious ransomware has been detected.
D. The prioritized behavioral indicators of compromise justify the execution of the “ransomware” because the scores are low and indicate the likelihood that malicious ransomware has been detected.

Answer: C

NEW QUESTION 65

A customer is using a central device to manage network devices over SNMPv2. A remote attacker caused a denial of service condition and can trigger this vulnerability by issuing a GET request for the ciscoFlashMIB OID on an affected device. Which should be disabled to resolve the issue?

- A. SNMPv2
B. TCP small services
C. port UDP 161 and 162
D. UDP small services

Answer: A

NEW QUESTION 67

Drag and drop the function on the left onto the mechanism on the right.

Answer Area

creates the set of executable tasks

minimizes redundancies and steamlines repetitive tasks

organizes components to seamlessly run applications

systematically executes large workflows

Orchestration

Automation

- A. Mastered
- B. Not Mastered

Answer: A

Explanation:

Answer Area

creates the set of executable tasks

minimizes redundancies and steamlines repetitive tasks

organizes components to seamlessly run applications

systematically executes large workflows

Orchestration

organizes components to seamlessly run applications

creates the set of executable tasks

Automation

minimizes redundancies and steamlines repetitive tasks

systematically executes large workflows

NEW QUESTION 70

An engineer is moving data from NAS servers in different departments to a combined storage database so that the data can be accessed and analyzed by the organization on-demand. Which data management process is being used?

- A. data clustering
- B. data regression
- C. data ingestion
- D. data obfuscation

Answer: A

NEW QUESTION 75

A threat actor has crafted and sent a spear-phishing email with what appears to be a trustworthy link to the site of a conference that an employee recently attended. The employee clicked the link and was redirected to a malicious site through which the employee downloaded a PDF attachment infected with ransomware. The employee opened the attachment, which exploited vulnerabilities on the desktop. The ransomware is now installed and is calling back to its command and control server. Which security solution is needed at this stage to mitigate the attack?

- A. web security solution
- B. email security solution
- C. endpoint security solution
- D. network security solution

Answer: D

NEW QUESTION 76

An engineer receives an incident ticket with hundreds of intrusion alerts that require investigation. An analysis of the incident log shows that the alerts are from trusted IP addresses and internal devices. The final incident report stated that these alerts were false positives and that no intrusions were detected. What action should be taken to harden the network?

- A. Move the IPS to after the firewall facing the internal network
- B. Move the IPS to before the firewall facing the outside network
- C. Configure the proxy service on the IPS
- D. Configure reverse port forwarding on the IPS

Answer: C

NEW QUESTION 80

Refer to the exhibit.

```
try
{
    using (MemoryStream memoryStream = new MemoryStream())
    {
        memoryStream.Position = 32L;
        using (AesCryptoServiceProvider aesCryptoServiceProvider = new AesCryptoServiceProvider())
        {
            aesCryptoServiceProvider.KeySize = 128;
            aesCryptoServiceProvider.BlockSize = 128;
            aesCryptoServiceProvider.Mode = CipherMode.CBC;
            aesCryptoServiceProvider.Padding = PaddingMode.PKCS7;
            aesCryptoServiceProvider.Key = key;
            aesCryptoServiceProvider.GenerateIV();
            using (CryptoStream cryptoStream = new CryptoStream(memoryStream, aesCryptoServiceProvider.CreateEncryptor(), CryptoStreamMode.Write))
            {
                memoryStream.Write(aesCryptoServiceProvider.IV, 0, aesCryptoServiceProvider.IV.Length);
                cryptoStream.Write(input, 0, input.Length);
                cryptoStream.FlushFinalBlock();
                using (HMACSHA256 hMACSHA = new HMACSHA256(bytes))
                {
                    byte[] array = hMACSHA.ComputeHash(memoryStream.ToArray(), 32, memoryStream.ToArray().Length - 32);
                    memoryStream.Position = 0L;
                    memoryStream.Write(array, 0, array.Length);
                }
            }
        }
        result = memoryStream.ToArray();
    }
}
catch
{
}
```

An engineer is performing a static analysis on a malware and knows that it is capturing keys and webcam events on a company server. What is the indicator of compromise?

- A. The malware is performing comprehensive fingerprinting of the host, including a processor, motherboard manufacturer, and connected removable storage.
- B. The malware is a ransomware querying for installed anti-virus products and operating systems to encrypt and render unreadable until payment is made for file decryption.
- C. The malware has moved to harvesting cookies and stored account information from major browsers and configuring a reverse proxy for intercepting network activity.
- D. The malware contains an encryption and decryption routine to hide URLs/IP addresses and is storing the output of loggers and webcam captures in locally encrypted files for retrieval.

Answer: B

NEW QUESTION 83

Refer to the exhibit.

<p>Vulnerability #1</p> <p>A vulnerability in the Command Line Interpreter (CLI) of ACME Super Firewall (all models) could allow an attacker to execute a command which would overflow a buffer in memory. In order to carry out this attack, the attacker needs to fulfill all of the following conditions:</p> <p>a) Be logged in to the device over telnet or SSH, or through the local console b) Be logged in as a high-privileges administrative user</p> <p>In order to trigger the vulnerability, the attacker has to execute a command on the device and supply a specially crafted argument to such command. Once the command is executed, an internal stack-based buffer overflow will be triggered. This buffer overflow may lead to code execution within the process space of the CLI parser, or may crash the device.</p> <p>All software versions are affected Fixes are available now There are no workarounds or mitigations</p>	<p>Vulnerability #2</p> <p>A vulnerability in the web-based management interface of the ACME Big Router models 1010 and 1020 could allow an attacker to bypass authorization checks and then access sensitive information on the device, modify the device's configuration, impact the availability of the system, create administrative level and regular level users on the device. In order to exploit this vulnerability, the attacker needs to:</p> <p>a) Be able to reach port 80/tcp on an affected device b) The web-based management interface needs to be enabled on the device</p> <p>The attacker would then need to send a specially formed HTTP request to the web-based management interface of an affected system. The attacker does not need to log-in to the device before launching the attack.</p> <p>All software versions are affected There are no fixes available now Customers can disable the web-based management interface to prevent exploitation. Customers will still be able to manage, configure and monitor the device by using the Command Line Interface (CLI), but with reduced capabilities for monitoring.</p>
--------------------------------------------------------------------------------------------------------------------------------------------------------------------------------------------------------------------------------------------------------------------------------------------------------------------------------------------------------------------------------------------------------------------------------------------------------------------------------------------------------------------------------------------------------------------------------------------------------------------------------------------------------------------------------------------------------------------------------------------------------------------------------------------------------------------------------------------------------------------------------------------------------------------------------------------------------------------------	-----------------------------------------------------------------------------------------------------------------------------------------------------------------------------------------------------------------------------------------------------------------------------------------------------------------------------------------------------------------------------------------------------------------------------------------------------------------------------------------------------------------------------------------------------------------------------------------------------------------------------------------------------------------------------------------------------------------------------------------------------------------------------------------------------------------------------------------------------------------------------------------------------------------------------------------------------------------------------------------------------------------------------------------------------------------------------------------------------------------------------------------------------------------------------

How must these advisories be prioritized for handling?

- A. The highest priority for handling depends on the type of institution deploying the devices
- B. Vulnerability #2 is the highest priority for every type of institution
- C. Vulnerability #1 and vulnerability #2 have the same priority
- D. Vulnerability #1 is the highest priority for every type of institution

Answer: D

NEW QUESTION 84

Refer to the exhibit.

```
def map_to_lowercase_letter(s):
    return ord('a') + ((s-ord('a')) % 26)
def next_domain(domain):
    dl = [ord(x) for x in list(domain)]
    dl[0] = map_to_lowercase_letter(dl[0] + dl[3])
    dl[1] = map_to_lowercase_letter(dl[0] + 2*dl[1])
    dl[2] = map_to_lowercase_letter(dl[0] + dl[2] - 1)
    dl[3] = map_to_lowercase_letter(dl[1] + dl[2] + dl[3])
    return "".join([chr(x) for x in dl])
def isBanjoriTail(seed):
    for c0 in xrange(97,123):
        for c1 in xrange(97, 123):
            for c2 in xrange(97,123):
                for c3 in xrange (97,123):
                    domain = chr(c0)+chr(c1)+chr(c2)+chr(c3)
                    domain = next_domain(domain)
                    if seed.startswith(domain):
                        return False
    return True
seeds = {
    "nhcisatformalisticirekb.com",
    "egfesatformalisticirekb.com",
    "qwfusatformalisticirekb.com",
    "eijhsatformalisticirekb.com",
    "siowsatformalisticirekb.com",
    "dhansatformalisticirekb.com",
    "zvogsatformalisticirekb.com",
    "yaewsatformalisticirekb.com",
    "wgxfsatformalisticirekb.com",
    "vfxlsatformalisticirekb.com",
    "usjssatformalisticirekb.com",
    "selzsatformalisticirekb.com",
    "nzjqsatformalisticirekb.com",
    "kencsatformalisticirekb.com",
    "fzkxsatformalisticirekb.com",
    "babysatformalisticirekb.com",
}
for seed in seeds:
    print seed,isBanjoriTail(seed)
```

What results from this script?

- A. Seeds for existing domains are checked
- B. A search is conducted for additional seeds
- C. Domains are compared to seed rules

D. A list of domains as seeds is blocked

Answer: B

NEW QUESTION 85

A European-based advertisement company collects tracking information from partner websites and stores it on a local server to provide tailored ads. Which standard must the company follow to safeguard the resting data?

- A. HIPAA
- B. PCI-DSS
- C. Sarbanes-Oxley
- D. GDPR

Answer: D

NEW QUESTION 88

Refer to the exhibit.

```
#!/usr/bin/env python3

import re

def (username, minlen):
    if type(username) != str:
        raise TypeError
    if minlen < 3:
        raise ValueError
    if len(username) < minlen:
        return False
    if not re.match('[a-z0-9._]*$', username):
        return False
    if username[0].isnumeric():
        return False
    return True
```

An organization is using an internal application for printing documents that requires a separate registration on the website. The application allows format-free user creation, and users must match these required conditions to comply with the company's user creation policy:

- > minimum length: 3
- > usernames can only use letters, numbers, dots, and underscores
- > usernames cannot begin with a number

The application administrator has to manually change and track these daily to ensure compliance. An engineer is tasked to implement a script to automate the process according to the company user creation policy. The engineer implemented this piece of code within the application, but users are still able to create format-free usernames. Which change is needed to apply the restrictions?

- A. modify code to return error on restrictions `def return_false_user(username, minlen)`
- B. automate the restrictions `def automate_user(username, minlen)`
- C. validate the restrictions, `def validate_user(username, minlen)`
- D. modify code to force the restrictions, `def force_user(username, minlen)`

Answer: B

NEW QUESTION 93

A company launched an e-commerce website with multiple points of sale through internal and external e- stores. Customers access the stores from the public website, and employees access the stores from the intranet with an SSO. Which action is needed to comply with PCI standards for hardening the systems?

- A. Mask PAN numbers
- B. Encrypt personal data
- C. Encrypt access
- D. Mask sales details

Answer: B

NEW QUESTION 95

Drag and drop the type of attacks from the left onto the cyber kill chain stages at which the attacks are seen on the right.

Answer Area

not visible to the victim

virus scanner turning off

malware placed on the targeted system

open port scans and multiple failed logins from the website

large amount of data leaving the network through unusual ports

system phones connecting to countries where no staff are located

USB with infected files inserted into company laptop

reconnaissance

weaponization

delivery

exploitation

installation

command & control

actions on objectives

- A. Mastered
B. Not Mastered

Answer: A

Explanation:

Answer Area

not visible to the victim

virus scanner turning off

malware placed on the targeted system

open port scans and multiple failed logins from the website

large amount of data leaving the network through unusual ports

system phones connecting to countries where no staff are located

USB with infected files inserted into company laptop

system phones connecting to countries where no staff are located

malware placed on the targeted system

not visible to the victim

large amount of data leaving the network through unusual ports

USB with infected files inserted into company laptop

virus scanner turning off

open port scans and multiple failed logins from the website

NEW QUESTION 99

Where do threat intelligence tools search for data to identify potential malicious IP addresses, domain names, and URLs?

- A. customer data
B. internal database
C. internal cloud
D. Internet

Answer: D

NEW QUESTION 101

Drag and drop the components from the left onto the phases of the CI/CD pipeline on the right.

Answer Area

build	Phase 1
release	Phase 2
deploy	Phase 3
operate	Phase 4
monitor	Phase 5
test	Phase 6
plan	Phase 7
develop	Phase 8

- A. Mastered
- B. Not Mastered

Answer: A

Explanation:

Answer Area

build	plan
release	develop
deploy	build
operate	test
monitor	release
test	deploy
plan	operate
develop	monitor

NEW QUESTION 104
Refer to the exhibit.

TCP	192.168.1.8:54580	vk-in-f108:imaps	ESTABLISHED
TCP	192.168.1.8:54583	132.245.61.50:https	ESTABLISHED
TCP	192.168.1.8:54916	bay405-m:https	ESTABLISHED
TCP	192.168.1.8:54978	vu-in-f188:5228	ESTABLISHED
TCP	192.168.1.8:55094	72.21.194.109:https	ESTABLISHED
TCP	192.168.1.8:55401	wonderhowto:http	ESTABLISHED
TCP	192.168.1.8:55730	mia07s34-in-f78:https	TIME_WAIT
TCP	192.168.1.8:55824	a23-40-191-15:https	CLOSE_WAIT
TCP	192.168.1.8:55825	a23-40-191-15:https	CLOSE_WAIT
TCP	192.168.1.8:55846	mia07s25-in-f14:https	TIME_WAIT
TCP	192.168.1.8:55847	a184-51-150-89:http	CLOSE_WAIT
TCP	192.168.1.8:55853	157.55.56.154:40028	ESTABLISHED
TCP	192.168.1.8:55879	atl14s38-in-f4:https	ESTABLISHED
TCP	192.168.1.8:55884	208-46-117-174:https	ESTABLISHED
TCP	192.168.1.8:55893	vx-in-f95:https	TIME_WAIT
TCP	192.168.1.8:55947	stackoverflow:https	ESTABLISHED
TCP	192.168.1.8:55966	stackoverflow:https	ESTABLISHED
TCP	192.168.1.8:55970	mia07s34-in-f78:https	TIME_WAIT
TCP	192.168.1.8:55972	191.238.241.80:https	TIME_WAIT
TCP	192.168.1.8:55976	54.239.26.242:https	ESTABLISHED
TCP	192.168.1.8:55979	mia07s35-in-f14:https	ESTABLISHED
TCP	192.168.1.8:55986	server11:https	TIME_WAIT
TCP	192.168.1.8:55988	104.16.118.182:http	ESTABLISHED

A security analyst needs to investigate a security incident involving several suspicious connections with a possible attacker. Which tool should the analyst use to identify the source IP of the offender?

- A. packet sniffer
- B. malware analysis
- C. SIEM
- D. firewall manager

Answer: A

NEW QUESTION 108

What is a principle of Infrastructure as Code?

- A. System maintenance is delegated to software systems
- B. Comprehensive initial designs support robust systems
- C. Scripts and manual configurations work together to ensure repeatable routines
- D. System downtime is grouped and scheduled across the infrastructure

Answer: B

NEW QUESTION 111

An engineer received an alert of a zero-day vulnerability affecting desktop phones through which an attacker sends a crafted packet to a device, resets the credentials, makes the device unavailable, and allows a default administrator account login. Which step should an engineer take after receiving this alert?

- A. Initiate a triage meeting to acknowledge the vulnerability and its potential impact
- B. Determine company usage of the affected products
- C. Search for a patch to install from the vendor
- D. Implement restrictions within the VoIP VLANs

Answer: C

NEW QUESTION 113

A threat actor attacked an organization's Active Directory server from a remote location, and in a thirty-minute timeframe, stole the password for the administrator account and attempted to access 3 company servers. The threat actor successfully accessed the first server that contained sales data, but no files were downloaded. A second server was also accessed that contained marketing information and 11 files were downloaded. When the threat actor accessed the third server that contained corporate financial data, the session was disconnected, and the administrator's account was disabled. Which activity triggered the behavior analytics tool?

- A. accessing the Active Directory server
- B. accessing the server with financial data
- C. accessing multiple servers
- D. downloading more than 10 files

Answer: C

NEW QUESTION 117

A security expert is investigating a breach that resulted in a \$32 million loss from customer accounts. Hackers were able to steal API keys and two-factor codes due to a vulnerability that was introduced in a new code a few weeks before the attack. Which step was missed that would have prevented this breach?

- A. use of the Nmap tool to identify the vulnerability when the new code was deployed
- B. implementation of a firewall and intrusion detection system
- C. implementation of an endpoint protection system
- D. use of SecDevOps to detect the vulnerability during development

Answer: D

NEW QUESTION 121

An engineer wants to review the packet overviews of SNORT alerts. When printing the SNORT alerts, all the packet headers are included, and the file is too large to utilize. Which action is needed to correct this problem?

- A. Modify the alert rule to “output alert_syslog: output log”
- B. Modify the output module rule to “output alert_quick: output filename”
- C. Modify the alert rule to “output alert_syslog: output header”
- D. Modify the output module rule to “output alert_fast: output filename”

Answer: A

NEW QUESTION 122

Refer to the exhibit.

Asset	Threat	Vulnerability	Likelihood (1-10)	Impact (1-10)
Servers	Natural Disasters – Flooding	Server Room is on the zero floor	3	10
Secretary Workstation	Usage of illegitimate software	Inadequate control of software	7	6
Payment Process	Eavesdropping, Misrouting/re-routing of messages	Unencrypted communications	5	10
Website	Website Intrusion	No IDS/IPS usage	6	8

Which asset has the highest risk value?

- A. servers
- B. website
- C. payment process
- D. secretary workstation

Answer: C

NEW QUESTION 123

.....

Thank You for Trying Our Product

We offer two products:

1st - We have Practice Tests Software with Actual Exam Questions

2nd - Questions and Answers in PDF Format

350-201 Practice Exam Features:

- * 350-201 Questions and Answers Updated Frequently
- * 350-201 Practice Questions Verified by Expert Senior Certified Staff
- * 350-201 Most Realistic Questions that Guarantee you a Pass on Your First Try
- * 350-201 Practice Test Questions in Multiple Choice Formats and Updates for 1 Year

100% Actual & Verified — Instant Download, Please Click
[Order The 350-201 Practice Test Here](#)