

## 300-415 Dumps

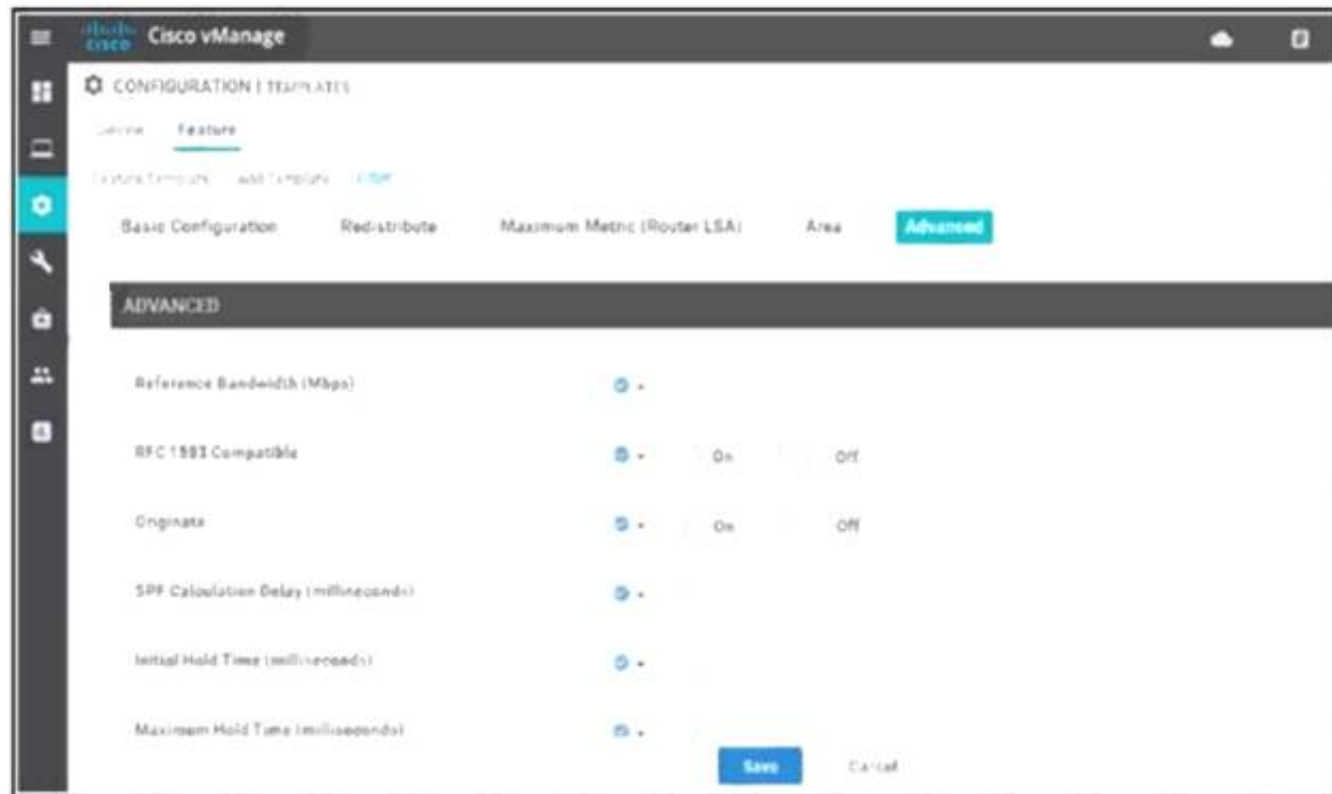
### Implementing Cisco SD-WAN Solutions (ENSDWI)

<https://www.certleader.com/300-415-dumps.html>



### NEW QUESTION 1

Refer to the exhibit.



A network administrator is configuring OSPF advanced configuration parameters from a template using the vManager GUI for a branch WAN Edge router to calculate the cost of summary routes to an ASBR. Which action achieves this configuration?

- A. Disable RFC 1583 Compatible
- B. Enable Originate
- C. Enable RFC 1M3 Compatible
- D. Disable Original

**Answer: C**

### NEW QUESTION 2

An engineer is configuring a centralized policy to influence network route advertisement. Which controller delivers this policy to the fabric?

- A. vSmart
- B. vManage
- C. WAN Edge
- D. vBond

**Answer: A**

#### Explanation:

vSmart controllers are the centralized brain of the solution; they implement policies and connectivity between SD-WAN branches. The centralized policy engine in Cisco vSmart controllers provides policy constructs to manipulate routing information, access control, segmentation, extranets, and service chaining.

### NEW QUESTION 3

Which two platforms for the Cisco SD-WAN architecture are deployable in a hypervisor on-premises or in IAAS Cloud? (Choose two.)

- A. CSR 1000v
- B. vEdge 100c
- C. vEdge Cloud
- D. vEdge 2000
- E. ISR 4431

**Answer: AC**

### NEW QUESTION 4

Which component of the Cisco SD-WAN secure extensible network provides a single pane of glass approach to network monitoring and configuration?

- A. APIC-EM
- B. vSmart
- C. vManage
- D. vBond

**Answer: C**

#### Explanation:

Cisco vManage provides a single-pane-of-glass management to manage all controller components and both enterprise and extended enterprise WAN edge devices. The comprehensive vManage GUI has dashboard, monitor, configuration, tools, maintenance, administration, and analytics as the top-level menus.

#### NEW QUESTION 5

Refer to the exhibit, which configuration configures IPsec tunnels in active and standby?

```
from-vsmart data-policy_1_ServiceIsertionIPSec
direction from-service
vpn-list 1
  sequence 1
  match destination-ip 64.102.6.247/32
  action accept
  set
  service netvc1
  service local
  default-action accept
```

- ☐ vpn 1  
service netvc1 interface ipsec1 ipsec2  
  
vpn-list 1  
count ServicePsec1\_275676046  
from-vsmart lists vpn-list 1  
vpn 1
- ☐ vpn 0  
service netvc1 interface ipsec1 ipsec2  
  
from-vsmart lists vpn-list 0  
vpn 0
- ☐ vpn 1  
service netvc1 interface ipsec1 ipsec2  
  
from-vsmart lists vpn-list 1  
vpn 1
- ☐ vpn 0  
service netvc1 interface ipsec1 ipsec2  
  
vpn-list 1  
count ServicePsec1\_275676046  
from-vsmart lists vpn-list 0  
vpn 0

- A. Option A
- B. Option B
- C. Option C
- D. Option D

**Answer:** C

#### NEW QUESTION 6

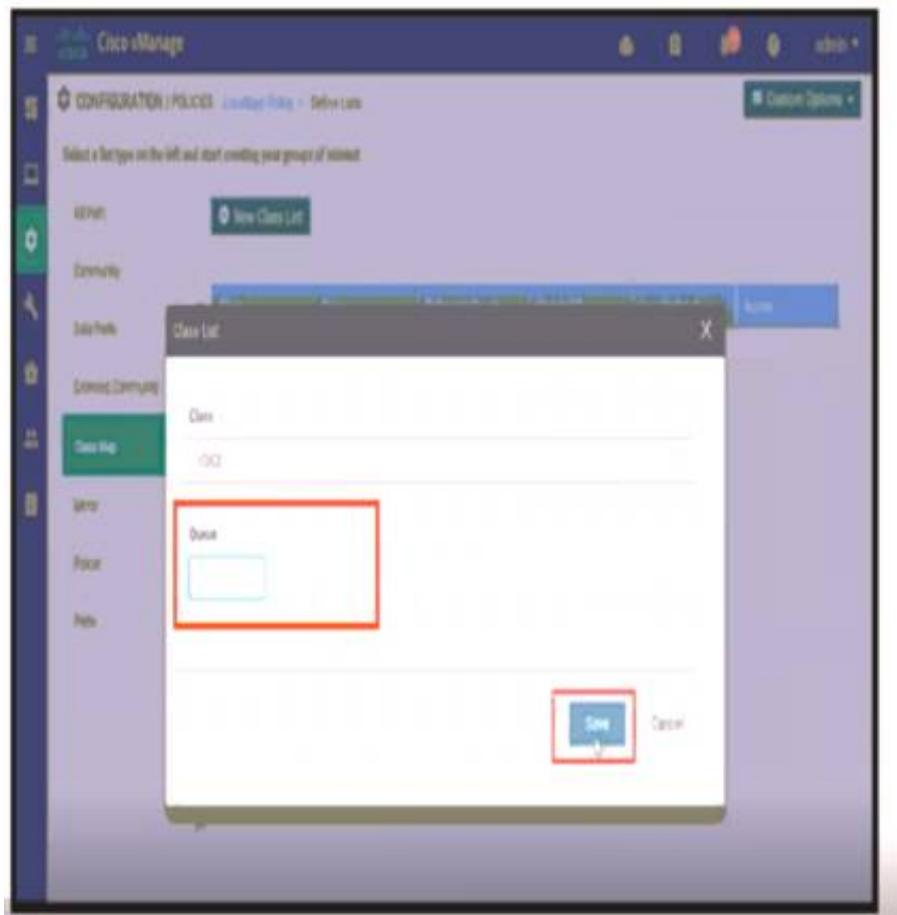
Which configuration component is used in a firewall security policy?

- A. numbered sequences of match-action pairs
- B. application match parameters
- C. URL filtering policy
- D. intrusion prevention policy

**Answer:** A

#### NEW QUESTION 7

Refer to the exhibit.



A network administrator is setting the queueing value for voice traffic for one of the WAN Edge routers using vManager GUI. Which queue value must be set to accomplish this task?

- A. 1
- B. 2
- C. 3

**Answer:** A

#### NEW QUESTION 8

An engineering team must prepare a traffic engineering policy where an MPLS circuit is preferred for traffic coming from the Admin VLAN Internet should be used as a backup only. Which configuration fulfill this requirement?

A)

```
policy
data-policy _TE
vpn-list VPN_10
sequence 1
match
source-data-prefix-list Source_Prefix
destination-data-prefix-list Dest_Prefix
action accept
set
vpn 10
tloc-list Hub_TLOCs
default-action reject
!
tloc-list Hub_TLOCs
tloc 10.4.4.4 color mpls encap ipsec preference 300
tloc 10.4.4.4 color public-internet encap ipsec preference 600
```

B)

```
policy
data-policy _TE
vpn-list VPN_10
sequence 1
match
source-data-prefix-list Source_Prefix
destination-data-prefix-list Dest_Prefix
action accept
nat use-vpn 0
nat fallback
default-action reject
!
tloc-list Hub_TLOCs
tloc 10.4.4.4 color mpls encap ipsec preference 300
tloc 10.4.4.4 color public-internet encap ipsec preference 600
```

C)

```
policy
data-policy _TE
vpn-list VPN_10
sequence 1
match
source-data-prefix-list Source_Prefix
destination-data-prefix-list Dest_Prefix
action accept
set
vpn 10
tloc-list Hub_TLOCs
default-action accept
!
tloc-list Hub_TLOCs
tloc 10.4.4.4 color mpls encap ipsec preference 600
tloc 10.4.4.4 color public-internet encap ipsec preference 300
```

D)

```
policy
data-policy _TE
vpn-list VPN_10
sequence 1
match
source-data-prefix-list Source_Prefix
destination-data-prefix-list Dest_Prefix
action accept
set
vpn 512
tloc-list Hub_TLOCs
default-action accept
!
tloc-list Hub_TLOCs
tloc 10.4.4.4 color mpls encap ipsec preference 600
tloc 10.4.4.4 color public-internet encap ipsec preference 300
```

- A. Option A
- B. Option B
- C. Option C
- D. Option D

**Answer:** C**NEW QUESTION 9**

An engineer is configuring a WAN Edge router for DIA based on matching QoS parameters. Which two actions accomplish this task? (Choose two.)

- A. Apply a QoS map policy.
- B. Configure a control policy.
- C. Configure a centralized data policy.
- D. Configure NAT on the transport interface.
- E. Apply a data policy on WAN interface.

**Answer:** CD**Explanation:**

<https://www.cisco.com/c/dam/en/us/td/docs/solutions/CVD/SDWAN/sdwan-dia-deploy-2020aug.pdf>

**NEW QUESTION 10**

Which hardware component is involved in the Cisco SD-WAN authentication process for ISR platforms?

- A. TPMD
- B. ZTP
- C. TPC
- D. SUDI

**Answer:** D**NEW QUESTION 10**

Which pathway under Monitor > Network > Select Device is used to verify service insertion configuration?

- A. Real Time
- B. System Status
- C. ACL Logs
- D. Events

**Answer:** A**Explanation:**

- Using Cisco vManage:

View the configured services on the Real Time monitoring page (**Monitor > Network > hub-device > Real Time**). For Device Options, select OMP Services.

<https://www.cisco.com/c/en/us/td/docs/routers/sdwan/configuration/policies/vedge-20-x/policies-book/service-c>

**NEW QUESTION 12**

What is the default value (in milliseconds) set for the poll interval in the BFD basic configuration?

- A. 300,000
- B. 600,000
- C. 900,000
- D. 1,200,000

**Answer:** B



**Explanation:**

[https://sdwan-docs.cisco.com/Product\\_Documentation/vManage\\_Help/Release\\_18.2/Configuration/Templates/B](https://sdwan-docs.cisco.com/Product_Documentation/vManage_Help/Release_18.2/Configuration/Templates/B)

**NEW QUESTION 17**

An engineer is configuring a data policy for IPv4 prefixes for a single WAN Edge device on a site with multiple WAN Edge devices. How is this policy added using the policy configuration wizard?

- A. In vManage NMS, select the configure policies screen, select the localized policy tab and click add policy
- B. In vSmart controller, select the configure policies screen, select the localized policy tab and click add policy
- C. In vBond orchestrator, select the configure policies screen, select the localized policy tab and click add policy
- D. In vManage NM, select the configure policies screen, select the centralized policy tab and click add policy
- E. In vBond orchestrator, select the configure policies screen, select the centralized policy tab and click add policy
- F. In vManage NMS, select the configure policies screen, select the localized policy tab and click add policy
- G. In vSmart controller, select the configure policies screen, select the localized policy tab and click add policy
- H. In vBond orchestrator, select the configure policies screen, select the localized policy tab and click add policy

**Answer:** A

**NEW QUESTION 20**

What are the default username and password for vSmart Controller when it is installed on a VMware ESXi hypervisor?

- A. username Cisco password admin
- B. username admin password Cisco
- C. username Cisco password Cisco
- D. username admin password admin

**Answer:** D

**NEW QUESTION 22**

Which platform cannot provide IPS and URL filtering capabilities?

- A. Cisco CSR 1000V
- B. Cisco ISR 1000
- C. Cisco Catalyst 8300
- D. Cisco ISR 4000

**Answer:** B

**NEW QUESTION 25**

What is the minimum Red Hat Enterprise Linux operating system requirement for a Cisco SD-WAN controller deployment via KVM?

- A. RHEL7.5
- B. RHEL 6.5
- C. RHEL4.4
- D. RHEL 6.7

**Answer:** D

**NEW QUESTION 26**

An engineer is adding a tenant with location ID 399533345 in vManage. What is the maximum number of alphanumeric characters that is accepted in the tenant name field?

- A. 64
- B. 128
- C. 256
- D. 8

**Answer:** B

**Explanation:**

In the Add Tenant window:

- a. Enter a name for the tenant. It can be up to 128 characters and can contain only alphanumeric characters.

**NEW QUESTION 28**

Which policy configuration must be used to classify traffic as it enters the branch WAN Edge router to be put into the desired output queue?

A)

```
Policy
class-map
class p1 queue 2
```

B)

```
qos-map Q_Map
qos-scheduler p1
```

C)

```
Policy
qos-scheduler QoS
class p1
bandwidth-percent 20
buffer-percent 20
drops red-drop
```

D)

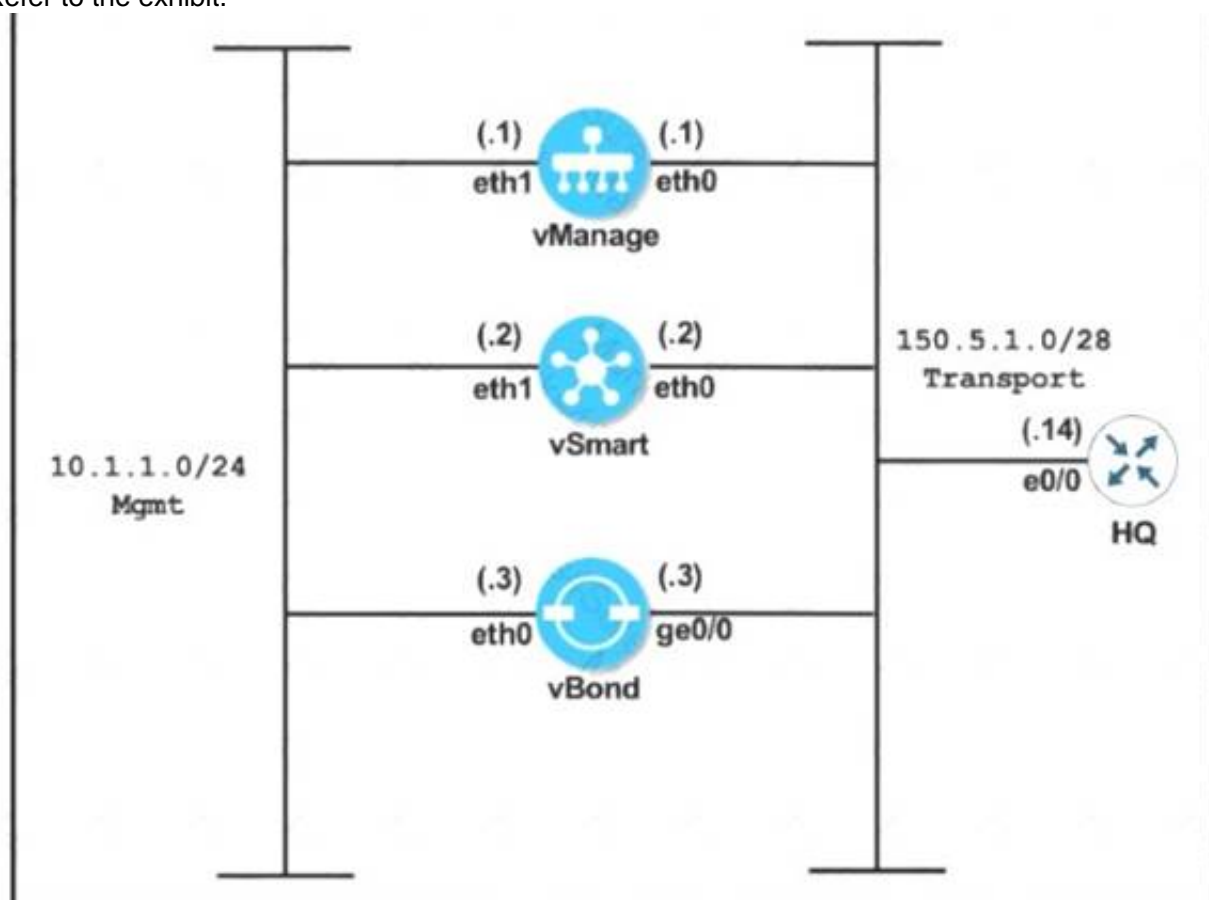
```
Policy
access-list QoS
sequence 1
match
destination-ip 10.0.0.0/8
!
action accept
class p1
```

- A. Option A
- B. Option B
- C. Option C
- D. Option D

**Answer:** D

#### NEW QUESTION 30

Refer to the exhibit.



```
vManage
system
system-ip 10.10.10.101
host-name vManage
site-id 1
clock timezone Europe/London
vbond 150.5.1.3
organization-name Cisco.com
!
vpn 0
interface eth0
ip address 150.5.1.1/28
no shut
tunnel-interface
allow-service all
ip route 0.0.0.0/0 150.5.1.14
!
commit

vSmart
system
system-ip 10.10.10.102
host-name vSmart
site-id 1
clock timezone Europe/London
vbond 150.5.1.3
organization-name Cisco.com
!
vpn 0
interface eth0
ip address 150.5.1.2/28
no shut
tunnel-interface
allow-service all
ip route 0.0.0.0/0 150.5.1.14
!
commit

vBond
system
system-ip 10.10.10.103
host-name vBond
site-id 1
clock timezone Europe/London
vbond 150.5.1.3
organization-name Cisco.com
!
vpn 0
interface ge0/0
ip address 150.5.1.3/28
no shut
tunnel-interface
encapsulation ipsec
allow-service all
ip route 0.0.0.0/0 150.5.1.14
!
commit
```

An engineer is troubleshooting an issue where vManage and vSmart have a problem establishing a connection to vBond. Which action fixes the issue?

- A. Reconfigure the vBond command on the vBond as vBond 150.5.1.3 local
- B. Configure the tunnel interface on all three controllers with a color of transport
- C. Remove the encapsulation IPsec command under the tunnel interface of vBond.
- D. Configure encapsulation as IPsec under the tunnel interface of vManage and vSmart

**Answer:** A

**Explanation:**

Configure the IP address of Cisco vBond Orchestrator. Cisco vBond Orchestrator's IP address must be a public IP address, to allow all Cisco vEdge devices in the overlay network to reach Cisco vBond Orchestrator:

```
vBond(config-system) #vbond ip-address local
```

In Releases 16.3 and later, the address can be an IPv4 or an IPv6 address. In earlier releases, it must be an IPv4 address. A vBond orchestrator is effectively a vEdge router that performs only the orchestrator functions. The local option designates the device to be Cisco vBond Orchestrator, not a vEdge router. Cisco vBond Orchestrator must run on a standalone virtual machine (VM) or hardware router; it cannot coexist in the same device as a software or hardware vEdge router.

**NEW QUESTION 32**

Which two virtualized environments are available for a company to install the controllers using the on-premises model? (Choose two )

- A. VMware vSphere ESXi
- B. VMware Workstation
- C. kernel-based virtual machine
- D. OpenStack
- E. Microsoft Hyper-V

**Answer:** AD

**NEW QUESTION 37**

An engineer configures an application-aware routing policy for a group of sites. The locations depend on public and private transports. The policy does not work as expected when one of the transports does not perform properly. This policy is configured:



```
policy
sla-class BULK_DATA
loss 20
latency 300
jitter 100
!
sla-class TRANSACTIONAL_DATA
loss 15
latency 50
jitter 100
!
sla-class REALTIME
loss 20
latency 100
jitter 30
!
app-route-policy VPN-10_MPLS_AND_INET_SITES
vpn-list VPN-10
sequence 1
match
dscp 46
!
action
backup-sla-preferred-color biz-internet
sla-class REALTIME preferred-color private1
!
!
sequence 11
match
dscp 34
!
action
backup-sla-preferred-color biz-internet
sla-class TRANSACTIONAL_DATA preferred-color private1
!
!
```

which configuration completes the policy so that it works for all locations?

A)

```
sla-class TRANSACTIONAL_DATA
loss 5
latency 50
jitter 100
!
sla-class REALTIME
loss 2
latency 100
jitter 30
!
```

B)

```
sla-class TRANSACTIONAL_DATA
loss 2
latency 100
jitter 30
!
sla-class REALTIME
loss 15
latency 100
jitter 100
!
```

C)

```
sla-class BULK_DATA
loss 10
latency 300
jitter 100
!
sla-class REALTIME
loss 2
latency 100
jitter 30
!
```

D)

```
sla-class BULK_DATA
loss 15
latency 100
jitter 100
!
sla-class TRANSACTIONAL_DATA
loss 10
latency 300
jitter 100
!
```

- A. Option A
- B. Option B
- C. Option C
- D. Option D

**Answer:** A

#### NEW QUESTION 39

What are the two impacts of losing vManage connectivity to fabric in the Cisco SD-WAN network? (Choose two)

- A. Policy changes propagation stops
- B. Statistics collection stops
- C. BFD peering between WAN Edge devices are unestablished
- D. Creation of templates is impossible
- E. IPsec tunnels tear down for WAN Edge devices.

**Answer:** AB

#### NEW QUESTION 42

An engineer wants to change the configuration of the certificate authorization mode from manual to automated. Which GUI selection will accomplish this?

- A. Maintenance > Security
- B. Configuration > Certificates
- C. Administration > Settings
- D. Tools > Operational Commands

**Answer:** C

**Explanation:**

#### Runbook to Request and Install Cisco PKI Certificates

1. Verify that you have satisfied the prerequisites and that you have added the Smart Account credentials.
2. Navigate to **Administration ► Settings ► Controller Certificate Authorization** and press Edit.
3. Select the **radio button Cisco Automated** (Recommended).

#### NEW QUESTION 46

Which secure connection should be used to access the REST APIs through the Cisco vManage web server?

- A. HTTP inspector interface
- B. authenticated HTTPS
- C. authenticated DTLS
- D. JSON Inspector interface

**Answer:** B

**Explanation:**

<https://documenter.getpostman.com/view/3224967/SVmpXhXd#ed9ccd34-cc5a-4258-bb6b-9b3848b7f650>

#### NEW QUESTION 48

A network administrator is bringing up one WAN Edge for branch connectivity. Which types of tunnels form when the WAN edge router connects to the SD-WAN fabric?

- A. DTLS or TLS tunnel with vBond controller and IPsec tunnel with vManage controller.
- B. DTLS or TLS tunnel with vBond controller and IPsec tunnel with other WAN Edge routers.
- C. DTLS or TLS tunnel with vSmart controller and IPsec tunnel with other Edge routers.
- D. DTLS or TLS tunnel with vSmart controller and IPsec tunnel with vBond controller.

**Answer:** C

**Explanation:**

The WAN Edge routers form a permanent Datagram Transport Layer Security (DTLS) or Transport Layer Security (TLS) control connection to the vSmart controllers and connect to both of the vSmart controllers over each transport. The routers also form a permanent DTLS or TLS control connection to the vManage server, but over just one of the transports. The WAN Edge routers securely communicate to other WAN Edge routers using IPsec tunnels over each transport. The Bidirectional Forwarding Detection (BFD) protocol is enabled by default and runs

#### NEW QUESTION 51

Drag and drop the devices from the left into order on the right to upgrade the software from version 19 to version 20.

WAN Edge	1
vBond	2
vManage	3
vSmart	4

- A. Mastered
- B. Not Mastered

Answer: A

Explanation:

WAN Edge	vManage	1
vBond	vBond	2
vManage	vSmart	3
vSmart	WAN Edge	4

#### NEW QUESTION 52

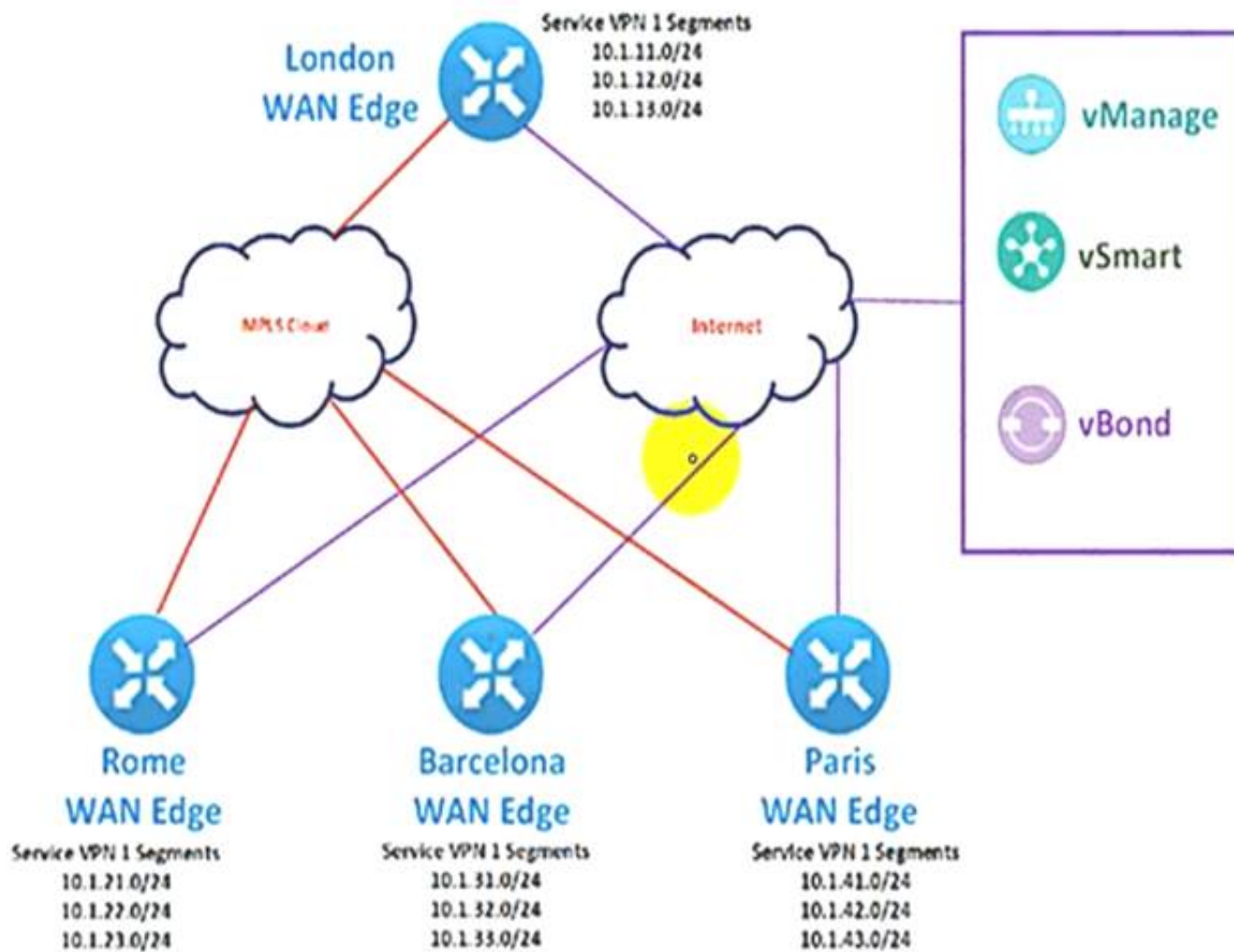
A network administrator configures SNMPv3 on a Cisco WAN Edge router from CLI for monitoring purposes. How many characters are supported by the snmp user <username> command?

- A. from 1 to 8
- B. from 1 to 16
- C. from 1 to 32
- D. from 1 to 48

Answer: C

#### NEW QUESTION 56

Refer to the exhibit.



The Cisco SD-WAN network is configured with a default full-mesh topology. An engineer wants Paris WAN Edge to use the Internet HOC as the preferred TLOC for MSN Messenger and AOL Messenger traffic. Which policy achieves this goal?

A)



B)



C)



D)





- A. Option A
- B. Option B
- C. Option C
- D. Option D

**Answer:** A

#### NEW QUESTION 60

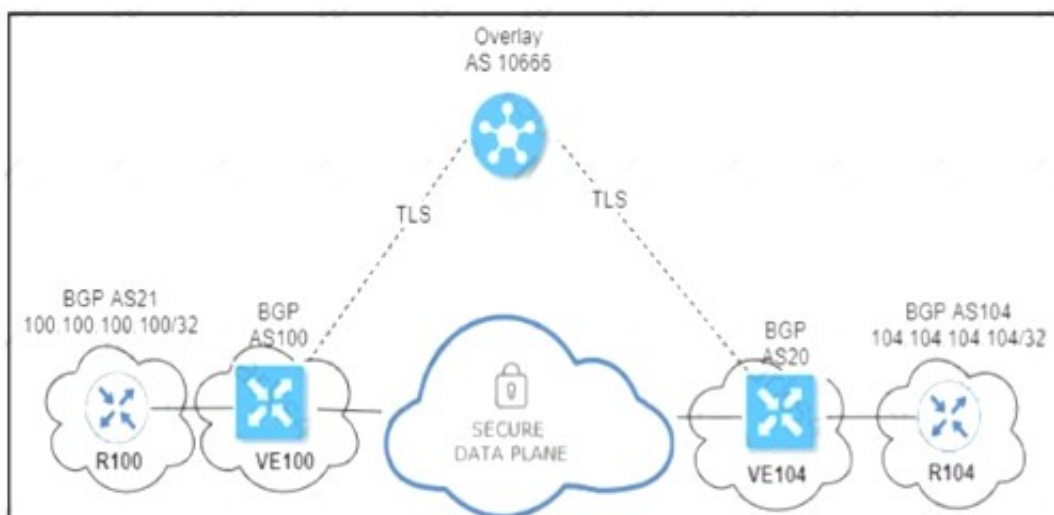
What are the two advantages of deploying cloud-based Cisco SD-WAN controllers? (Choose two.)

- A. centralized control and data plane
- B. distributed authentication policies
- C. management of SLA
- D. infrastructure as a service
- E. centralized raid storage of data

**Answer:** CD

#### NEW QUESTION 63

Refer to the exhibit.



An engineer configured OMP with an overlay-as of 10666. What is the AS-PATH for prefix 104.104.104.104/32 on R1007?

- A. 100 10666 104
- B. 100 10666
- C. 100 10666 20 104
- D. 100 20 104

**Answer:** A

#### NEW QUESTION 64

Which platform is a Cisco SD-WAN virtual platform?

- A. Cisco ISR 4000
- B. Cisco Nexus 1000V
- C. Cisco CSR 1000V
- D. Cisco ASR 1000

**Answer:** C

#### NEW QUESTION 68

An organization requires the use of integrated preventative engines, exploit protection, and the most updated and advanced signature-based antivirus with sandboxing and threat intelligence to stop malicious attachments before they reach users and get executed. Which Cisco SD-WAN solution meets the requirements?

- A. Cisco Trust Anchor module
- B. URL filtering and Umbrella DNS security
- C. Cisco AMP and Threat Grid
- D. Snort IPS

**Answer:** D



**NEW QUESTION 70**

When the VPN membership policy is being controlled at the vSmart controller, which policy disallows VPN 1 at sites 20 and 30?

A)

```
apply-policy
site-list 20-30
vpn-membership disallow-vpn 1
!
!
policy
lists
site-list 20-30
site-id 20
site-id 30
!
vpn-list VPN 1
vpn 10
vpn 20
!
!
vpn-membership disallow-vpn 1
sequence 10
match
vpn-list VPN 1
!
action reject
!
!
default-action accept
```

B)

```
policy
lists
site-list 20-30
site-id 20
site-id 30
!
prefix-list drop-list
ip-prefix 10.200.1.0/24
!
!
control-policy drop-unwanted-routes
sequence 10
match route
prefix-list drop-list
!
action reject
!
!
default-action accept
```

C)

```
apply-policy
  site-list 20-30
    vpn-membership disallow-vpn1
  !
!
policy
  lists
    site-list 20-30
      site-id 20
      site-id 30
    !
  !
  vpn-membership disallow-vpn1
    sequence 10
      match vpn-id 1
      action reject
    !
  !
  default-action accept
```

D)

```
policy
  lists
    site-list BP-Sites
      site-id 10
      site-id 20
    vpn-list All-BPs
      vpn 100
      vpn 101
    vpn-list Enterprise-BP
      vpn 200
  control-policy import-BPs-to-Enterprise
    sequence 10
      match route
      vpn-list All-BPs
    !
    action accept
    export-to vpn-list Enterprise-BP
  !
  !
  !
  default-action accept
```

- A. Option A
- B. Option B
- C. Option C
- D. Option D

**Answer:** C

#### NEW QUESTION 75

Which pathway under Monitor > Network > Select Device is used to verify service insertion configuration?

- A. System Status
- B. Troubleshooting
- C. Real Time
- D. Events

**Answer:** B

#### NEW QUESTION 78

A network administrator is configuring VRRP to avoid a traffic black hole when the transport side of the network is down on the master device. What must be configured to get the fastest failover to standby?

- A. lower timer interval
- B. prefix-list tracking
- C. higher group ID number
- D. OMP tracking

**Answer:** B

**Explanation:**

```
vEdge(config-vrrp)# track-prefix-list list-name
```

If all OMP sessions are lost, VRRP failover occurs as described for the track-omp option. In addition, if reachability to all the prefixes in the list is lost, VRRP failover occurs immediately, without waiting for the OMP hold timer to expire, thus minimizing the amount of overlay traffic is dropped while the vEdge routers determine the VRRP master.

#### NEW QUESTION 80

Which configuration allows users to reach YouTube from a local Internet breakout?

A)

```
VPN 10
ip route 0.0.0.0/0 vpn 0
```

B)

```
VPN 10
ip route 0.0.0.0/0 vpn 0
VPN 0
interface Gig1/1
nat
```

C)

```
policy
data-policy DPI
vpn-list vpn10
sequence 10
match
app-list YouTube
destination-port 80 443
!
action accept
count Youtube
!
default-action accept
!
lists
vpn-list vpn10
vpn 10
!
app-list YouTube
app youtube
app youtube_hd
!
site-list Remote
site-id 14
site-id 15
!
!
!
apply-policy
site-list Remote
data-policy DPI from-transport
```

D)

```
policy
data-policy DPI
vpn-list vpn10
sequence 10
match
app-list YouTube
!
action drop
count Youtube
!
default-action accept
!
lists
vpn-list vpn10
vpn 10
!
app-list YouTube
app youtube
app youtube_hd
!
site-list Remote
site-id 14
site-id 15
!
apply-policy
site-list Remote
data-policy DPI from-transport
```

```
vpn 10
ip route 0.0.0.0/0 vpn 0
```

- A. Option A
- B. Option B
- C. Option C
- D. Option D

**Answer:** B

**Explanation:**

As explained in figure 7, within the direct Internet model, segmentation is leveraged by deploying centralized data policies or a NAT DIA route to leak Internet traffic from the service-side VPN (VPNs 0 - 511,513 - 65530) into the Internet transport VPN (VPN 0), which allows traffic to exit directly to the Internet through the NAT- enabled interface in VPN 0.

<https://www.cisco.com/c/dam/en/us/td/docs/solutions/CVD/SDWAN/sdwan-dia-deploy-2020aug.pdf>

**NEW QUESTION 83**

An engineer modifies a data policy for DIA in VPN 67. The location has two Internet-bound circuits. Only the web browsing traffic must be admitted for DIA. without further discrimination about which transport to use.

Here is the existing data policy configuration:

```
data-policy DIA
vpn-list VPN-67
sequence 10
match
destination-data-prefix-list INTERNAL-NETWORKS
!
!
default-action drop
```

Which policy configuration sequence meets the requirements?

- ☐ sequence 5  
match  
destination-port 80 443  
destination-ip 0.0.0.0/0  
!  
action accept  
nat use-vpn 0
- ☐ sequence 20  
match  
destination-port 80 443  
source-ip 0.0.0.0/0  
!  
action accept  
set  
local-tloc-list  
color biz-internet
- ☐ sequence 20  
match  
destination-port 80 443  
destination-ip 0.0.0.0/0  
!  
action accept  
nat use-vpn 0
- ☐ sequence 5  
match  
destination-port 80 443  
source-ip 0.0.0.0/0  
!  
action accept  
set  
local-tloc-list  
color biz-internet

- A. Option A  
B. Option B  
C. Option C  
D. Option D

**Answer:** A

#### NEW QUESTION 84

An engineer wants to automate the onboarding process for a WAN Edge router with vManage. Which command will accomplish this?

- A. request vedge-cloud activate chassis-number <chassis-number> serial <serial>  
B. request vedge-cloud activate chassis-number <chassis-number> token <token-number>  
C. request vedge-cloud activate serial <serial> token <token-number>  
D. request vedge-cloud activate chassis-number <chassis-number> organization <organization>

**Answer:** B

#### Explanation:

```
vedge#  
vedge# vedge# request vedge-cloud activate chassis-number 19f2059b-5fd1-9027-a665-24c33d223247 token 22ee00b3a0c22d8269725d1cb495b718
```

#### NEW QUESTION 88

Refer to the exhibit





The network team must configure application-aware routing for the Service VPN 50.0.0.0/16

The SLA must prefer MPLS for video traffic but the remaining traffic must use a public network What must be defined other than applications before the application-aware policy is create?

- A. SLA Class, Site VP
- B. Prefix
- C. Data Prefix, Site VPN TLOC
- D. Application, SLA VP
- E. Prefix
- F. Color, SLA Class, Sue, VPN

**Answer:** A

#### NEW QUESTION 91

Which protocol advertises WAN edge routes on the service side?

- A. EIGRP
- B. OSPF
- C. BGP
- D. ISIS

**Answer:** B

#### NEW QUESTION 94

What is a requirement for a WAN Edge to reach vManage, vBond, and vSmart controllers in a data center?

- A. IGP
- B. QoS
- C. TLS
- D. OMP

**Answer:** A

#### Explanation:

<https://www.cisco.com/c/dam/en/us/td/docs/solutions/CVD/SDWAN/sdwan-wan-edge-onboarding-deploy-guid>

#### NEW QUESTION 95

What is the behaviour of vBond orchestrator?

- A. It maintains vSmart and WAN Edge routers secure connectivity state
- B. it builds permanent connections with vSmart controllers

- C. it updates vSmart of WAN Edge routers behind NAT devices using OMP.  
D. It builds permanent connections with WAN Edge routers

**Answer:** A

#### NEW QUESTION 97

Refer to the exhibit

```
vManage#show control local-properties
personality                vmanage
sp-organization-name       Cisco
organization-name          Cisco
system-ip                  10.1.1.10
root-ca-chain-status       Installed
certificate-status          Installed
```

A vBond controller was added to the controller list with the same Enterprise Root CA certificate as vManage. The two controllers can reach each other via VPNO and share the same organization name, but the control connection is not initiated- Which action resolves the issue?

- A. Synchronize the WAN Edge list on vManage with controllers.  
B. Configure NTP on both controllers to establish a connection.  
C. Configure a valid system IP on the vBond controller.  
D. Configure a valid vBond IP on vManage.

**Answer:** D

#### NEW QUESTION 98

Which combination of platforms are managed by vManage?

- A. ISR4321, ASR1001, ENCS, ISRv  
B. ISR4351, ASR1002HX, vEdge2000, vEdge Cloud  
C. ISR4321, ASR1001, Nexus, ENCS  
D. ISR4351, ASR1009, vEdge2000, CSR1000v

**Answer:** A

#### NEW QUESTION 100

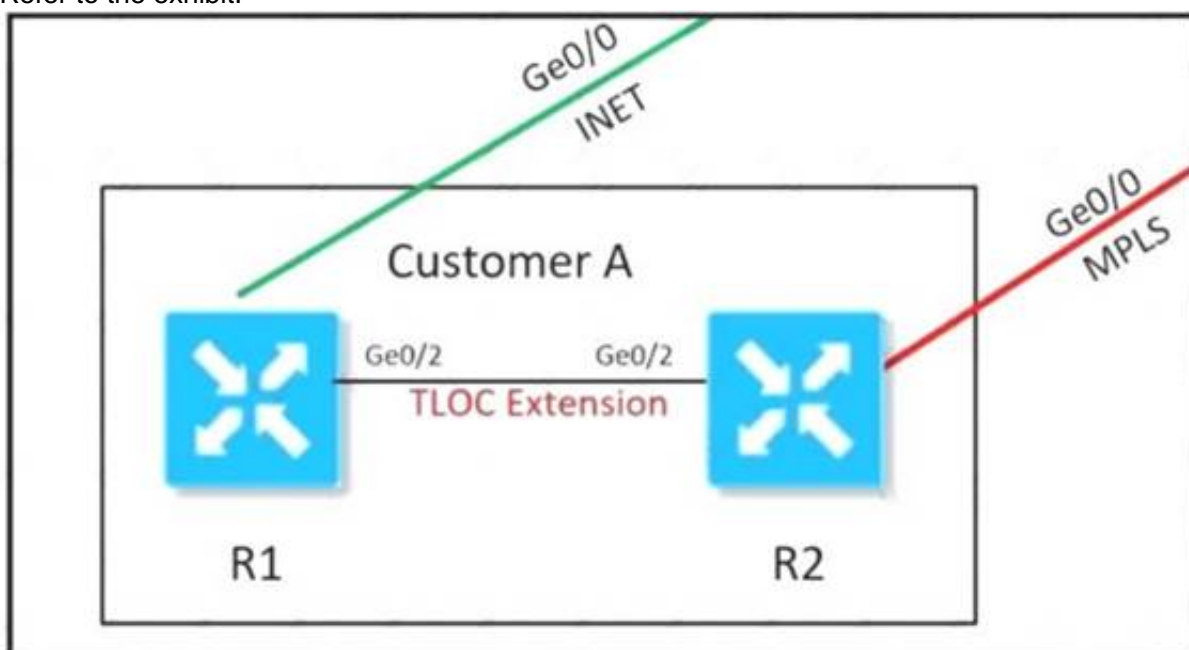
Which policy allows communication between TLOCs of data centers and spokes and blocks communication between spokes?

- A. centralized data policy  
B. centralized control policy  
C. localized control policy  
D. localized data policy

**Answer:** B

#### NEW QUESTION 101

Refer to the exhibit.



An MPLS connection on R2 must extend to R1 Users behind R1 must have dual connectivity for data traffic Which configuration provides R1 control connectivity over the MPLS connection?

A)

R1  
interface ge0/2  
ip address 34.34.34.1/30  
tloc-extension ge0/1  
tunnel-interface  
color mpls

R2  
interface ge0/2  
ip address 34.34.34.2/30  
tloc-extension ge0/0  
tunnel-interface  
color public-internet

B)

R1  
interface ge0/2  
ip address 34.34.34.1/30  
tloc-extension ge0/1

R2  
interface ge0/0  
ip address 34.34.34.2/30  
tunnel-interface  
color mpls

C)

```
vpn 0
router
ospf
 redistribute omp route-policy OSPF_Route_Policy
 area 0
 interface ge0/2
 exit
lists
prefix-list W2_Loopback
ip-prefix 10.10.10.5/32
!
route-policy OSPF_Route_Policy
sequence 1
match
 address W2_Loopback
!
action accept
set
 metric 100
 metric-type type2
```

D)

```
vpn 10
name """" Service VPN 10 """"
router
ospf
 redistribute omp route-policy OSPF_Route_Policy
 area 0
 interface ge0/2
 exit
lists
prefix-list W2_Loopback
ip-prefix 10.10.10.5/32
!
route-policy OSPF_Route_Policy
sequence 1
match
 address W2_Loopback
!
action accept
```

- A. Option A
- B. Option B
- C. Option C
- D. Option D

**Answer:** D

#### NEW QUESTION 103

Which attributes are configured to uniquely Identify and represent a TLOC route?

- A. system IP address, link color, and encapsulation
- B. firewall, IPS, and application optimization
- C. site ID, tag, and VPN
- D. origin, originator, and preference

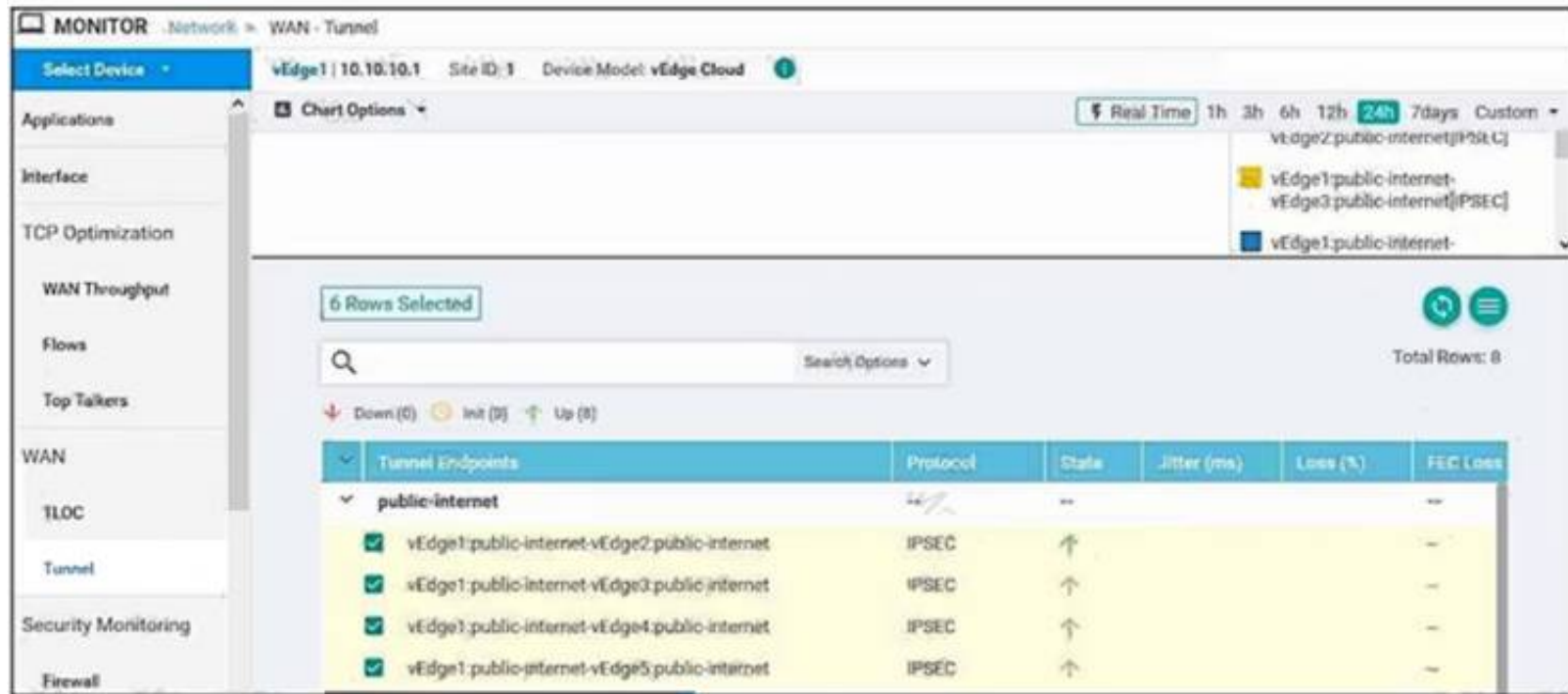
**Answer:** A

#### Explanation:

<https://www.cisco.com/c/dam/en/us/td/docs/solutions/CVD/SDWAN/CVD-SD-WAN-Design-2018OCT.pdf>

#### NEW QUESTION 106

Refer to the exhibit.



Which command-line configuration on a WAN Edge device achieves these results?

A)

```
vpn 0
interface ge0/0
 ip address 10.50.0.101/30
 tunnel-interface
  encapsulation gre
  color public-internet
  allow-service ntp

ip route 0.0.0.0/0 10.50.0.102
```

B)

```
vpn 0
interface ge0/0
 ip address 10.50.0.101/30
 tunnel-interface
  encapsulation ipsec
  color public-internet restrict
  allow-service all
  allow-service netconf

ip route 0.0.0.0/0 10.50.0.102
```

C)

```
vpn 0
interface ge0/0
 ip address 10.50.0.101/30
 tunnel-interface
  encapsulation ipsec
  allow-service none

ip route 0.0.0.0/0 10.50.0.102
```

D)

```
vpn 1
interface ge0/0
 ip address 10.50.0.101/30
 tunnel-interface
  encapsulation ipsec
  color public-internet restrict
  allow-service all
  allow-service netconf

ip route 0.0.0.0/0 10.50.0.102
```

- A. Option A
- B. Option B
- C. Option C
- D. Option D

**Answer: B**

#### NEW QUESTION 108

An engineer is troubleshooting a certificate issue on vEdge. Which command is used to verify the validity of the certificates?

- A. show control local-properties
- B. show control summary
- C. show certificate installed
- D. show certificate status

**Answer: A**

#### NEW QUESTION 113

A bank is looking for improved customer experience for applications and reduce overhead related to compliance and security. Which key feature or features of the



Cisco SD-WAN solution will help the bank to achieve their goals?

- A. Integration with PaaS providers to offer the best possible application experience
- B. QoS including application prioritization and meeting critical applications SLA for selecting optimal path.
- C. implementation of a modern age core banking system
- D. implementation of BGP across the enterprise routing for selecting optimal path

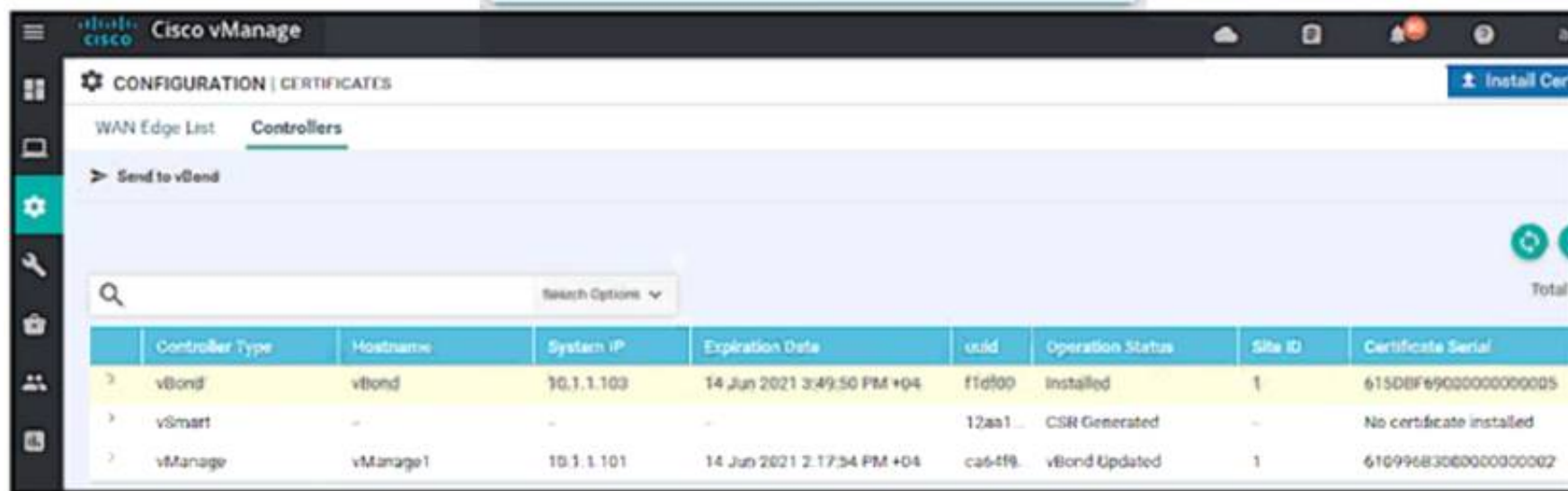
**Answer: B**

**Explanation:**

<https://www.cisco.com/c/dam/en/us/solutions/collateral/enterprise-networks/sd-wan/nb-06-cisco-sd-wan-ebook->

#### NEW QUESTION 118

Refer to the exhibit



	Controller Type	Hostname	System IP	Expiration Date	uuid	Operation Status	Site ID	Certificate Serial
>	vBond	vBond	10.1.1.103	14 Jun 2021 3:49:50 PM +04	f1d700	Installed	1	615DBF69000000000005
>	vSmart	-	-	-	12aa1...	CSR Generated	-	No certificate installed
>	vManage	vManage1	10.1.1.101	14 Jun 2021 2:17:34 PM +04	ca6-4f8...	vBond Updated	1	61699683060000000002

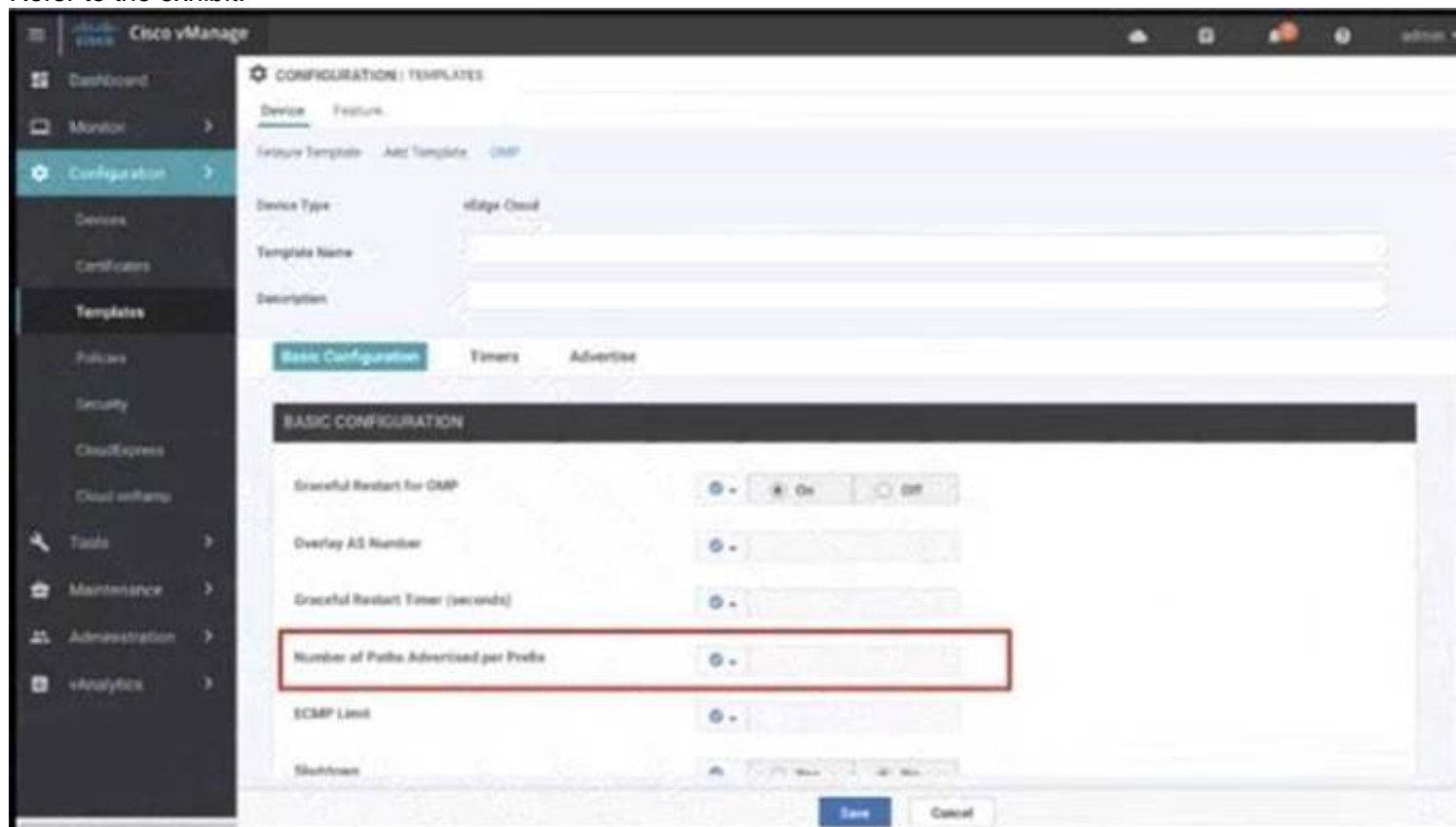
vManage and vBond have an issue establishing a connection to vSmart Which two actions does the administrator take to fix the issue? (Choose two)  
Install the certificate received from the certificate server.

- A. Manually resync vManage and vBond
- B. Reconfigure the vSmart from CLI with the proper Hostname & System IP
- C. Delete and re-add vSmart Click Generate and validate CSR
- D. Request a certificate from the certificate server based on the CSR for the vSmart

**Answer: CD**

#### NEW QUESTION 121

Refer to the exhibit.



**CONFIGURATION | TEMPLATES**

Device: vEdge Cloud

Template Name: [Empty]

Description: [Empty]

**BASIC CONFIGURATION**

Graceful Restart for OMP: ☐ On ☐ Off

Overlay AS Number: [Empty]

Graceful Restart Timer (seconds): [Empty]

**Number of Paths Advertised per Prefix**: [Empty]

ECMP Limit: [Empty]

Shutdown: [Empty]

Save Cancel

A network administrator is configuring OMP in vManage to advertise all the paths for the same prefix from a site that has two WAN Edge devices Each WAN Edge device is connected to three ISPs and two private MPLS transports. What is the minimum value for 'Number of Paths advertised per Prefix' that should be configured?

- A. 2
- B. 3
- C. 5
- D. 10

**Answer: D**

#### NEW QUESTION 124

An engineer must avoid routing loops on the SD-WAN fabric for routes advertised between data center sites Which BGP loop prevention attribute must be



configured on the routers to meet this requirement?

- A. same OMP overlay-as on WAN Edge routers of all data centers
- B. static routing on al WAN Edge routers instead of BGP
- C. same BGP AS between all WAN Edge routers and CE routers
- D. same BGP AS between all CE and PE routers

**Answer:** A

#### NEW QUESTION 125

Which TCP Optimization feature is used by WAN Edge to prevent unnecessary retransmissions and large initial TCP window sizes to maximize throughput and achieve a better quality?

- A. SEQ
- B. SYN
- C. RTT
- D. SACK

**Answer:** D

**Explanation:**

### TCP Optimization

The Cisco SD-WAN TCP Optimization feature uses **TCP Selective Acknowledgement (SACK)** to prevent unnecessary retransmissions and large initial TCP window sizes in order to maximize throughput and achieve a better quality of experience.

#### NEW QUESTION 129

Refer to exhibit.

PEER	PEER	PEER	PEER	SITE	DOMAIN									
INSTANCE	TYPE	PRIVATE	PEER	SYSTEM IP	PUBLIC	ID	PRIVATE IP	LOCAL	REMOTE	REPEAT	REMOTE			
COLOR	STATE	PROTOCOL	ERROR	ERROR	ID	COUNT	DOWNTIME	PORT	PUBLIC IP	PORT	REMOTE			
0	Wood	8119	0.0.0.0	0	0	192.168.0.231	12345	192.168.0.231	12345	Default	168			
p_down	CRTRFJHFR	NOTED	9	2019-04-01T19:04:32+0200										

An engineer is troubleshooting tear down of control connections even though a valid Certificate Serial Number is entered Which two actions resolve the Issue? (Choose two)

- A. Enter a valid serial number on the controllers for a given device
- B. Remove the duplicate IP in the network.
- C. Enter a valid product ID (model) on the PNP portal
- D. Match the serial number file between the controllers
- E. Restore network reachability for the controller

**Answer:** CD

**Explanation:**

<https://community.cisco.com/t5/networking-documents/sd-wan-routers-troubleshoot-control-connections/ta-p/38>

#### NEW QUESTION 132

What is a default protocol for control plane connection?

- A. IPsec
- B. HTTPS
- C. TLS
- D. DTLS

**Answer:** D

#### NEW QUESTION 137

An engineer must configure local redundancy on a site. Which configuration accomplish this task?

- A. vpn 0interface interface-name
- B. tloc extension interlace nametloc extension interface interface name
- C. vpn 0tloc extension interface
- D. interface-flameinterface interface-name tloc-extension

**Answer:** A

#### NEW QUESTION 142

In a Cisco SD-WAN network, which component is responsible for distributing route and policy information via the OMP?

- A. vManage
- B. vSmart Controller
- C. vBond Orchestrator
- D. WAN Edge Router

**Answer:** B

**Explanation:**

The Cisco vSmart Controller maintains a centralized route table that stores the route information, called OMP routes, that it learns from the vEdge routers and from any other Cisco vSmart Controllers in the Cisco SD-WAN overlay network. Based on the configured policy, the Cisco vSmart Controller shares this route information with the Cisco vEdge network devices in the network so that they can communicate with each other.

**NEW QUESTION 145**

Which two services are critical for zero touch provisioning on-boarding? (Choose two)

- A. SNMP
- B. DNS
- C. DHCP
- D. AAA
- E. EMAIL

**Answer:** BC

**NEW QUESTION 150**

Refer to the exhibit.

policy	!
lists	!
!	default-action accept
tloc-list dc-preference-east	!
tloc 100.100.100.100 color mpls	control-policy adv-dc-preference-east
encap ipsec preference 200	sequence 10
tloc 101.101.101.101 color mpls	match route
encap ipsec preference 400	site-list dc-sites
!	!
site-list sites-region-west	action accept
site-id 1-20	set
!	tloc-list dc-preference-east
site-list sites-region-east	!
site-id 21-40	!
!	!
site-list dc-sites	default-action accept
site-id 100-101	!
	!
control-policy adv-dc-preference-west	apply-policy
sequence 10	site-list sites-region-west
match route	control-policy adv-dc-preference-west
site-list dc-sites	out
!	!
action accept	site-list sites-region-east
set	control-policy adv-dc-preference-east
tloc-list dc-preference-east	out
!	!
	!

A customer wants to implement primary and secondary Cisco SD-WAN overlay routing for prefixes that are advertised for both data centers. The east data center (TLOC 101.101.101.101) is primary for east sites, and the west data center (TLOC 100.100.100.100) is primary for west sites. Which configuration change achieves this objective?

A.

```
lists
tlloc-list dc-preference-west
tlloc 100.100.100.100 color mpls encap ipsec preference 400
tlloc 101.101.101.101 color mpls encap ipsec preference 200

control-policy adv-dc-preference-west
sequence 10
match route
site-list dc-sites
!
action accept
set
tlloc-list dc-preference-west
!
!
default-action accept
```

B.

```
lists
tlloc-list dc-preference-west
tlloc 100.100.100.100 color mpls encap ipsec preference 200
tlloc 101.101.101.101 color mpls encap ipsec preference 400

control-policy adv-dc-preference-west
sequence 10
match route
site-list dc-sites
!
action accept
set
tlloc-list dc-preference-west
!
!
default-action accept
```

C.

```
tlloc-list dc-preference-east
tlloc 100.100.100.100 color mpls encap ipsec preference 400
tlloc 101.101.101.101 color mpls encap ipsec preference 200
```

D.

```
control-policy adv-dc-preference-west
sequence 10
match route
site-list dc-sites
!
action accept
set
tlloc-list dc-preference-west
!
!
default-action accept
```

- A. Option A
- B. Option B
- C. Option C
- D. Option D

**Answer: A**

#### NEW QUESTION 155

Which two resource data types are used to collect information for monitoring using REST API in Cisco SD-WAN? (Choose two.)

- A. POST
- B. DELETE
- C. scalar
- D. array
- E. PUT

**Answer: CD**

#### NEW QUESTION 156

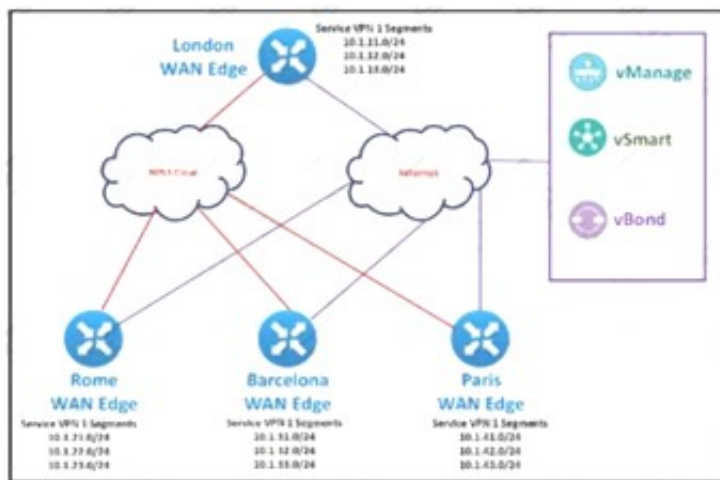
Which controller is excluded from the process of checking against the authorized, allowed list?

- A. vBond
- B. PnP
- C. vSmart
- D. vManage

**Answer: A**

#### NEW QUESTION 160

Refer to the exhibit.



The SD-WAN network is configured with a default full-mesh topology. The SD-WAN engineer wants the Barcelona WAN Edge to use MPLS TLOC as the preferred TLOC when communicating with Rome site. Which configuration must the engineer use to create a list to select MPLS color toward the Rome TLOC?

A)

**Add Mesh Region**

Name: Partial\_Mesh

Description: Partial\_Mesh

VPN List: ALL

Mesh Region Name: North

B)

**Add Mesh Region**

Name: Partial\_Mesh

Description: Partial\_Mesh

VPN List: ALL

Mesh Region Name: North

C)

**Add Control Policy**

**TLOC**  
Create a policy to apply to TLOCs

D)



- A. Option A
- B. Option B
- C. Option C
- D. Option D

**Answer:** C

#### NEW QUESTION 164

Which two actions are necessary to set the Controller Certificate Authorization mode to indicate a root certificate? (Choose two)

- A. Select the Controller Certificate Authorization mode that is recommended by Cisco
- B. Change the organization name of the Cisco SO-WAN fabric.
- C. Upload an SSL certificate to vManage,
- D. Select a private certificate signing authority instead of a public certificate signing authority
- E. Select a validity period from the drop-down menu

**Answer:** CD

#### NEW QUESTION 165

Which policy blocks TLOCs from remotes and allows TLOCs from the data center to form hub-and-spoke peering?

- A. localized control policy
- B. localized data policy
- C. centralized data policy
- D. centralized control policy

**Answer:** C

**Explanation:**

##### Centralized Policy

Centralized policy refers to policy provisioned on Cisco vSmart Controllers, which are the centralized controllers in the Cisco SD-WAN overlay network. Centralized policy comprises two components:

- Control policy, which affects the overlay network-wide routing of traffic
- Data policy, which affects the data traffic flow throughout the VPN segments in the network

#### NEW QUESTION 168

Which device in the SD- WAN solution receives and categorizes event reports, and generates alarms?

- A. WAN Edge routers
- B. vSmart controllers
- C. vManage NMS
- D. vBond controllers

**Answer:** C

**Explanation:**

[https://sdwan-docs.cisco.com/Product\\_Documentation/vManage\\_Help/Release\\_17.1/vManage\\_NMS\\_Product\\_](https://sdwan-docs.cisco.com/Product_Documentation/vManage_Help/Release_17.1/vManage_NMS_Product_)

#### NEW QUESTION 171

What is the maximum number of IPsec that are temporarily created and converged on a new set of IPsec SAs in the pairwise keys process during a simultaneous rekey?

- A. 2
- B. 4



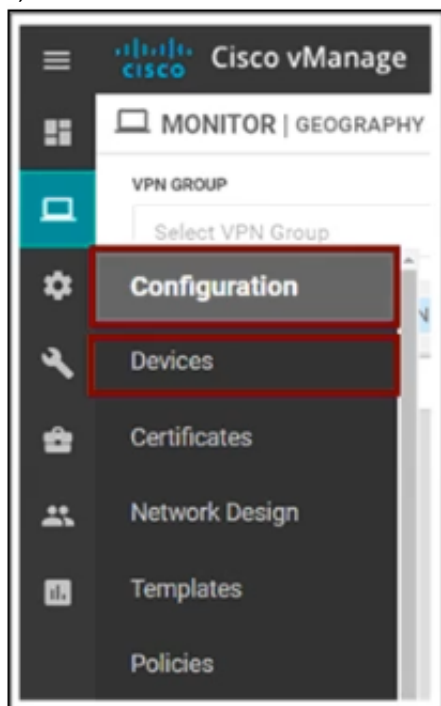
- C. 6
- D. 8

**Answer: B**

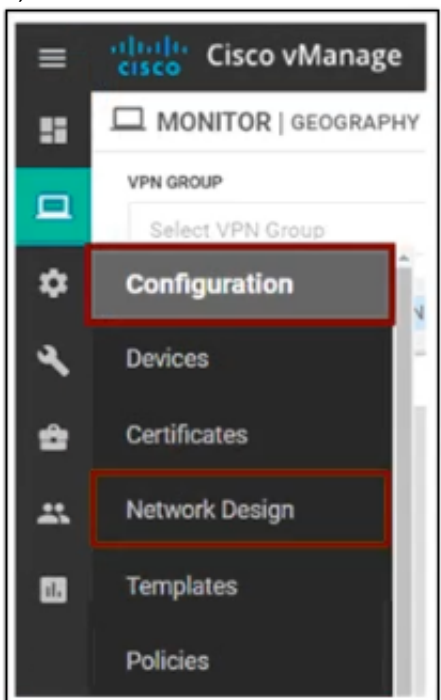
**NEW QUESTION 176**

The Cisco SD-WAN engineer is configuring service chaining for a next-generation firewall located at the headquarters. Which configuration creates the service?

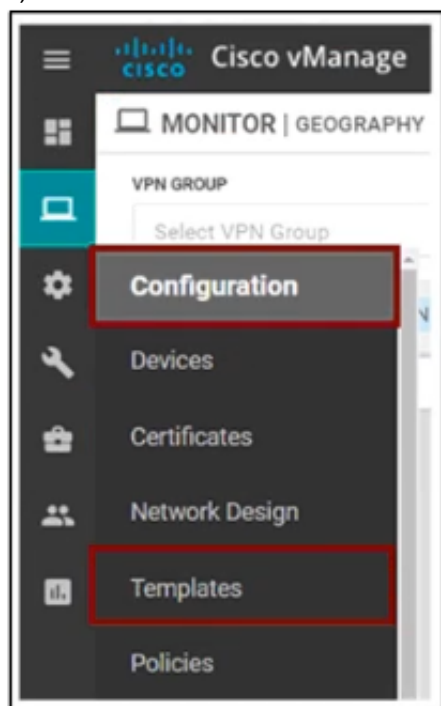
A)



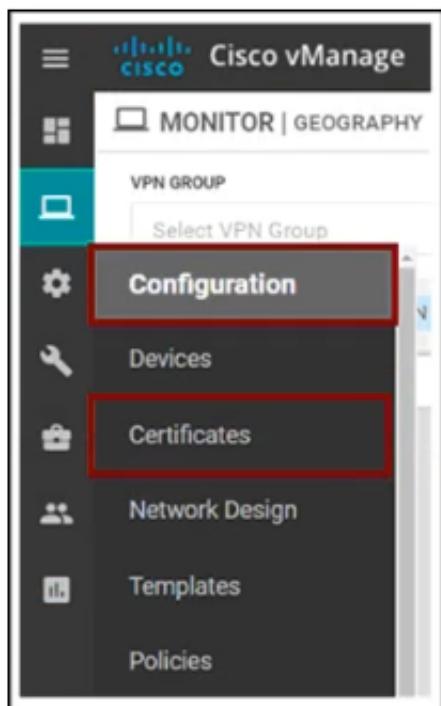
B)



C)



D)



- A. Option A
- B. Option B
- C. Option C
- D. Option D

**Answer:** C

#### NEW QUESTION 177

Which platforms are managed by a single vManage dashboard?

- A. ISR4351, ASR1002HX, vEdge2000, vEdge Cloud
- B. ISR4321, ASR1001, Nexus, ENCS
- C. ISR4321, ASR1001, ENCS, ISRV
- D. ISR4351, ASR1009, vEdge2000, CSR1000v

**Answer:** C

#### NEW QUESTION 178

An engineer is troubleshooting a vEdge router and identifies a “DCONFFAIL – DTLS connection failure” message. What is the problem?

- A. certificate mismatch
- B. organization mismatch
- C. memory issue
- D. connectivity issue

**Answer:** D

#### Explanation:

<https://community.cisco.com/t5/networking-documents/sd-wan-routers-troubleshoot-control-connections/ta-p/38>

#### NEW QUESTION 179

An engineer is configuring a data policy for packets that must be captured through the policy. Which command accomplishes this task?

- A. policy > data-policy > vpn-list > sequence > default-action > drop
- B. policy > data-policy > vpn-list > sequence > action
- C. policy > data-policy > vpn-list > sequence > default-action > accept
- D. policy > data-policy > vpn-list > sequence > match

**Answer:** B

#### Explanation:

<https://www.cisco.com/c/dam/en/us/td/docs/routers/sdwan/configuration/config-18-4.pdf#page=357>

#### NEW QUESTION 184

A customer has MPLS and Internet as the TLOC colors. An engineer must configure controllers with the Internet and not with MPLS. Which configuration achieves this requirement on vManage?

- A)  
vpn 0  
interface eth1  
ip address 10.50.0.1/24  
tunnel-interface  
color mpls
- B)  
vpn 0  
interface eth1  
ip address 10.50.0.1/24  
tunnel-interface  
color public-internet

C)  
vpn 0  
interface eth1  
ip address 10.50.0.1/24  
tunnel-interface  
color biz-internet

D)  
vpn 0  
interface eth1  
ip address 10.50.0.1/24  
tunnel-interface  
color default

- A. Option A
- B. Option B
- C. Option C
- D. Option D

**Answer:** B

#### NEW QUESTION 189

In a Cisco SD-WAN architecture, what is the role of the WAN Edge?

- A. It provides orchestration to assist in automatic provisioning of WAN Edge routers and overlay
- B. It is the management plane responsible for centralized configuration and monitoring
- C. It is the control plane that builds and maintains network topology
- D. It is the data plane that is responsible for forwarding traffic

**Answer:** D

#### Explanation:

Cisco WAN Edge routers are responsible for establishing the network fabric and forwarding traffic. Cisco WAN Edge routers come in multiple forms, virtual and

#### NEW QUESTION 193

What must an engineer consider when deploying an SD-WAN on-premises architecture based on ESXi hypervisor?

- A. Cisco must provision the backup and snapshots platform for the SD-WAN architecture
- B. The managed service provider must provision controllers with their appropriate certificates
- C. The IT team is required to provision the SD-WAN controllers and is responsible for backups and disaster recovery implementation
- D. The IT team will be given access by Cisco to a vManage for configuration templates and policies

**Answer:** C

#### NEW QUESTION 195

Which two algorithms authenticate a user when configuring SNMPv3 monitoring on a WAN Edge router? (Choose two.)

- A. AES-256
- B. SHA-1
- C. AES-128
- D. MD5
- E. SHA-2

**Answer:** AB

#### Explanation:

## Configure SNMPv3

Table 7. Feature History

Feature Name	Release Information	Description
Support for SNMPv3 AES-256 bit Authentication Protocol	Cisco SD-WAN Release 20.5.1	Support introduced for AES-256 bit Authentication Protocol called SHA-256.

To configure SNMPv3, in SNMP Version, click **V3**. For SNMPv3, you can configure groups, users, and trap information. Configure groups and trap information as described above.

To configure SNMPv3 users, in the User section, click **Add New User** and enter the following parameters:

Table 8.

Parameter Name	Description
User	Enter a name of the SNMP user. It can be 1 to 32 alphanumeric characters.
Authentication Protocol	<p>Select the authentication mechanism for the user:</p> <ul style="list-style-type: none"> <li>SHA-1 message digest</li> <li>SHA-256 message digest</li> </ul> <p><b>Note</b> Starting from Cisco SD-WAN Release 20.5.1, SHA-256 authentication protocol was introduced. When you choose SHA-256 as the authentication protocol, you must set the security level as authPriv.</p> <p><b>Note</b> MD5 authentication protocol is deprecated for Cisco SD-WAN Release 20.3.2 and later releases.</p>

<https://www.cisco.com/c/en/us/td/docs/routers/sdwan/configuration/snmp/snmp-book.html>

## NEW QUESTION 200

Refer to the exhibit.

```

policy
  policer ccnp
    rate 1000000
    burst 15000
    exceed drop
  !
access-list acl-guest
  sequence 1
  match
    source-ip 172.16.10.0/24
    destination-ip 172.16.20.0/24
    destination-port 20
    protocol 6
  !
  action accept
    policer ccnp
  !
  !
  default-action drop

```

Which QoS treatment results from this configuration after the access list acl-guest is applied inbound on the vpn1 interface?

- A. A UDP packet sourcing from 172.16.20.1 and destined to 172.16.10.1 is accepted
- B. A TCP packet sourcing from 172.16.10.1 and destined to 172.16.20.1 is dropped
- C. A UDP packet sourcing from 172.16.10.1 and destined to 172.16.20.1 is dropped.
- D. A TCP packet sourcing from 172.16.20.1 and destined to 172.16.10.1 is accepted

**Answer: C**

## NEW QUESTION 201

Which table is used by the vSmart controller to maintain service routes of the WAN Edge routers in the hub and local branches?

- A. RIB
- B. FIB
- C. OMP
- D. TLOC

**Answer: C**

## NEW QUESTION 206

Which feature builds transport redundancy by using the cross link between two redundant WAN Edge routers?

- A. OMP
- B. zero-touch provisioning
- C. quality of service



D. TLOC extension

**Answer:** D

**Explanation:**

Features like TLOC extension help to build transport redundancy by using the cross link between two redundant WAN Edge routers. Network level redundancy is implemented by multiple geo-redundant data centers.

#### NEW QUESTION 208

Which alarm setting is configured to monitor serious events that affect but do not shut down, the operation of a network function?

- A. Minor
- B. Major
- C. Medium
- D. Critical

**Answer:** B

#### NEW QUESTION 211

How should the IP addresses be assigned for all members of a Cisco vManage cluster located in the same data center?

- A. in the same subnet
- B. in overlapping IPs
- C. in each controller with a /32 subnet
- D. in different subnets

**Answer:** A

#### NEW QUESTION 215

An engineer creates a data policy to prevent communication from the 172.20.21.0/24 network to the 172.20.41.0/24 network. Which configuration accomplishes this task?

```
○ policy
  lists
    vpn-list VPN1
      vpn 1
    !
    data-prefix-list LosAngeles-Net1
      ip-prefix 172.20.21.0/24
    data-prefix-list Rome-Net1
      ip-prefix 172.20.41.0/24
    !
    data-policy FILTER-POLICY
      vpn-list VPN1
      sequence 1
      match
        source-data-prefix-list  LosAngeles-Net1
      action drop
      !
      sequence 11
      match
        source-data-prefix-list  Rome-Net1
      action drop
      !
    default-action accept
```

- ☐ policy  
lists  
vpn-list VPN1  
vpn 1  
!  
data-prefix-list LosAngeles-Net1  
ip-prefix 172.20.21.0/24  
data-prefix-list Rome-Net1  
ip-prefix 172.20.41.0/24  
!  
data-policy FILTER-POLICY  
vpn-list VPN1  
sequence 1  
match  
source-data-prefix-list LosAngeles-Net1  
destination-data-prefix-list Rome-Net1  
action drop  
!  
default-action accept
- ☐ policy  
lists  
vpn-list VPN1  
vpn 1  
!  
data-prefix-list LosAngeles-Net1  
ip-prefix 172.20.0.0/16  
data-prefix-list Rome-Net1  
ip-prefix 172.20.0.0/16  
!  
data-policy FILTER-POLICY  
vpn-list VPN1  
sequence 1  
match  
source-data-prefix-list LosAngeles-Net1  
destination-data-prefix-list Rome-Net1  
action drop  
!  
default-action accept
- ☐ policy  
lists  
vpn-list VPN1  
vpn 1  
!  
data-prefix-list LosAngeles-Net1  
ip-prefix 172.20.21.0/24  
data-prefix-list Rome-Net1  
ip-prefix 172.20.41.0/24  
!  
data-policy FILTER-POLICY  
vpn-list VPN1  
sequence 1  
match  
source-data-prefix-list LosAngeles-Net1  
destination-data-prefix-list Rome-Net1  
action accept  
!  
default-action drop

- A. Option A  
B. Option B  
C. Option C  
D. Option D

**Answer: B**

**NEW QUESTION 216**

A customer has 1 to 100 service VPNs and wants to restrict outbound updates for VPN1 Which control policy configuration restricts these updates?

A)

```
policy
lists
vpn-list VPN2-100
vpn 2-100
!
!
control-policy restrict_2-100
sequence 10
match route
vpn-list VPN2-100
!
action reject
!
default-action accept
```

B)

```
policy
lists
vpn-list VPN2-100
vpn 2-100
!
!
control-policy restrict_2-100
sequence 10
match route
vpn-list VPN2-100
!
action reject
!
default-action accept
```

C)

```
policy
lists
vpn-list VPN1
vpn 1
!
!
control-policy restrict_1
sequence 10
match route
vpn-list VPN1
!
action reject
!
default-action accept
```

D)

```
Policy
lists
vpn-list restricted_vpns
vpn 2-100
!
!
vpn-membership restrict_1
sequence 10
match vpn-list restricted_vpns
action reject
!
!
default-action accept
!
```

A. Option A

B. Option B

C. Option C

D. Option D

**Answer: C**

**NEW QUESTION 220**

Which command on a WAN Edge device displays the information about the colors present in the fabric that are learned from vSmart via OMP?

A. show omp tlocs

B. show omp sessions

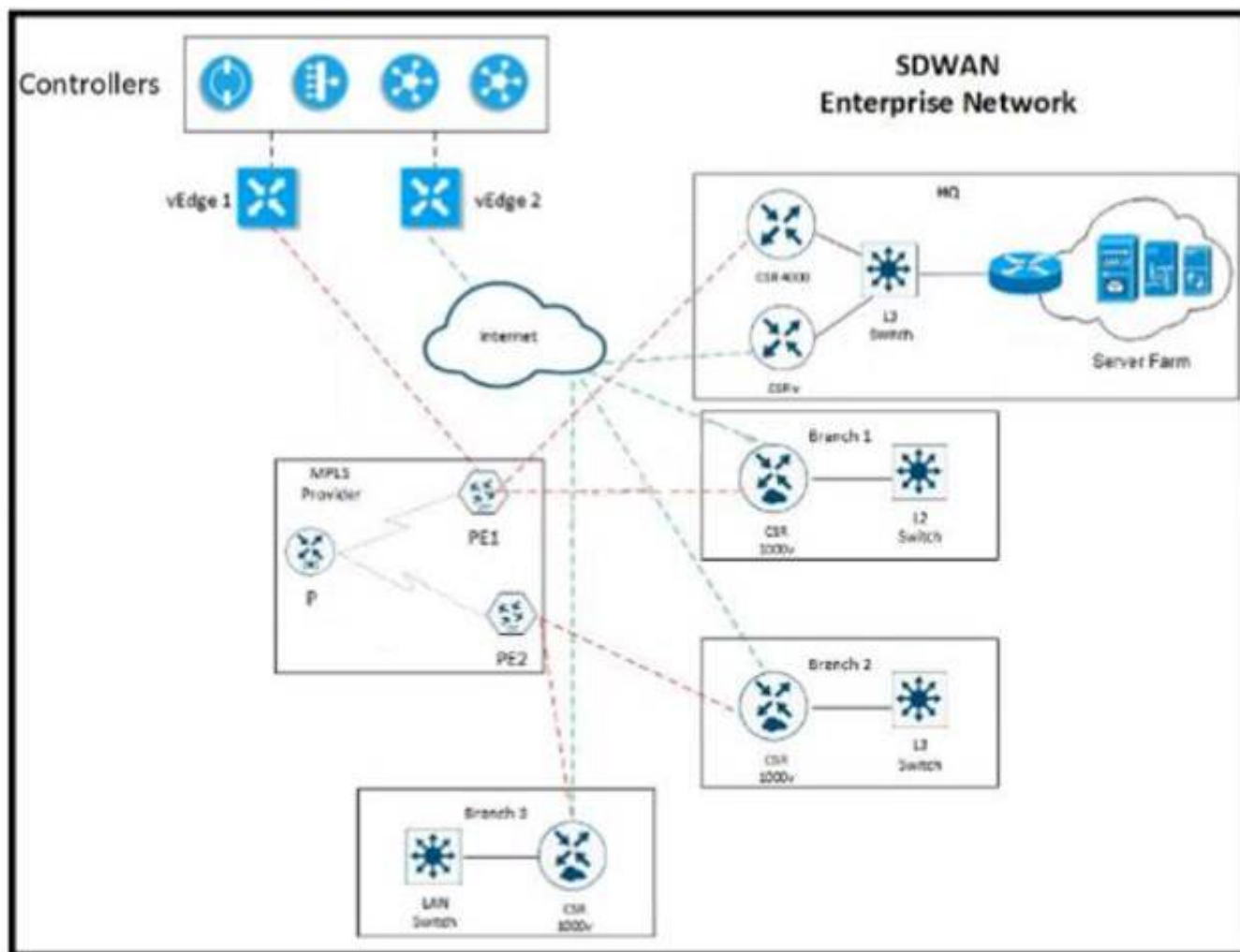
C. show omp peers

D. show omp route

**Answer: A**

**NEW QUESTION 222**

Refer to the exhibit



The network team must configure EIGRP peering at HQ with devices in the service VPN connected to WAN Edge CSRv. CSRv is currently configured with

```
viptela-system:system
device-model vedge-cloud
host-nam CSRv
location CA
system-ip 10.4.4.4
domain-id 1
site-id 1
organization-name ABC
clock timezone US/Newyork
vbond 10.10.0.1 port 12346
```

```
omp
no shutdown
graceful-restart
```

Which configuration on the WAN Edge meets the requirement?

A)

```
vpn 0
interface ge0/0
description "Internet Circuit"
ip address 209.165.200.229/30
tunnel-interface
encapsulation ipsec
color public-internet
allow-service all

router
eigrp
address-family ipv4-unicast
maximum-path paths 4
network 10.0.0.0/28
redistribute omp

vpn 512
interface eth0
shutdown
```

B)



```
vpn 0
interface ge0/0
description "Internet Circuit"
ip address 209.165.200.229/30
tunnel-interface
encapsulation ipsec
color public-internet
allow-service all

router
eigrp
address-family ipv4-unicast
maximum-path paths 4
network 10.0.0.0/28
redistribute omp

vpn 512
interface eth0
shutdown
```

C)

```
vpn 0
interface ge0/0
description "Internet Circuit"
ip address 209.165.200.229/30
tunnel-interface
encapsulation ipsec
color public-internet
allow-service all

vpn 1
router
eigrp
address-family ipv4-unicast
maximum-path paths 4
network 10.0.0.0/28
redistribute omp

interface ge0/1
ip address 10.0.0.1/28

vpn 512
interface eth0
shutdown
```

D)

```
vpn 0
vpn 1
interface ge0/0
description "Internet Circuit"
ip address 209.165.200.229/30
tunnel-interface
encapsulation ipsec
color public-internet
allow-service all

router
eigrp
address-family ipv4-unicast
maximum-path paths 4
network 10.0.0.0/28
redistribute omp

interface ge0/1
ip address 10.0.0.1/28

vpn 512
interface eth0
shutdown
```

- A. Option A
- B. Option B
- C. Option C
- D. Option D

**Answer:** C

#### NEW QUESTION 223

A network administrator is configuring Qos on a vEdge 5000 router and needs to enable it on the transport side interface. Which policy setting must be selected to accomplish this goal?

- A. Cloud QoS Service side
- B. Cloud QoS
- C. NetFlow
- D. Application

**Answer:** B

**Explanation:**

9. Since the DC routers are vEdge 5000s, select the **Cloud QoS** checkbox to enable QoS on the transport side.

**NEW QUESTION 225**

Which type of policy must be applied on a WAN Edge application-aware firewall to control traffic between two or more VPNs?

- A. service-insertion policy
- B. data policy
- C. firewall policy
- D. control policy

**Answer:** C

**NEW QUESTION 227**

Which value is verified in the certificates to confirm the identity of the physical WAN Edge device?

- A. Serial Number
- B. OTP
- C. System-IP
- D. Chassis-ID

**Answer:** A

**Explanation:**

<https://www.cisco.com/c/en/us/td/docs/routers/sdwan/configuration/sdwan-xe-gs-book/manage-certificates.html>

**NEW QUESTION 228**

Which vBond system configuration under VPN 0 allows for a routable public IP address even if the DNS name, hostname, or IP address of the vBond orchestrator are omitted?

- A. local
- B. vbond-only
- C. dns-name
- D. WAN

**Answer:** A

**NEW QUESTION 231**

An enterprise needs DIA on some of its branches with a common location ID: A041:B70C: D78E::18 Which WAN Edge configuration meets the requirement?

A)

```
vpn 1
interface ge0/1
ip address 172.16.0.1/24
vpn 512
ip route 0.0.0.0/0 vpn 0
```

B)

```
vpn 1
ip route 0.0.0.0/0 vpn 1
interface ge0/0
ip address 172.16.0.1/24
nat
```

C)

```
vpn 0
interface ge0/0
ip address 172.16.0.1/24
nat
vpn 1
ip route 0.0.0.0/0 vpn 0
```

D)

```
vpn 0
ip route 0.0.0.0/0 vpn 0
vpn 1
interface ge0/1
ip address 172.16.0.1/24
nat
```

- A. Option A
- B. Option B
- C. Option C
- D. Option D

**Answer:** C

#### NEW QUESTION 232

An enterprise has several sites with multiple VPNs that are isolated from each other. A new requirement came where users in VPN 73 must be able to talk to users in VPN 50. Which configuration meets this requirement?

- ☒ policy  
control-policy Route\_Leaking  
sequence 1  
match route  
vpn-list VPN\_73  
prefix-list \_AnyIpv4PrefixList  
action accept  
export-to vpn-list VPN\_50  
sequence 11  
match route  
vpn-list VPN\_50  
prefix-list \_AnyIpv4PrefixList  
action accept  
export-to vpn-list VPN\_73  
default-action accept
- ☐ policy  
control-policy Route\_Leaking  
sequence 1  
match route  
VPN\_73  
prefix-list \_AnyIpv4PrefixList  
export-to VPN\_50  
sequence 11  
match route  
VPN\_50  
prefix-list \_AnyIpv4PrefixList  
export-to VPN\_73  
default-action accept
- ☒ policy  
control-policy Route\_Leaking  
sequence 1  
match route  
VPN\_ALL  
prefix-list \_AnyIpv4PrefixList  
action accept  
export-to VPN\_ALL
- ☐ policy  
control-policy Route\_Leaking  
sequence 1  
match route  
VPN\_50 VPN\_73  
prefix-list \_AnyIpv4PrefixList  
action accept  
export-to VPN\_73 VPN\_50

- A. Option A  
B. Option B  
C. Option C  
D. Option D

**Answer:** A

#### NEW QUESTION 235

Which command disables the logging of syslog messages to the local disk?

- A. no system logging disk enable  
B. no system logging disk local  
C. system logging disk disable  
D. system logging server remote

**Answer:** A

#### NEW QUESTION 237

An enterprise deployed a Cisco SD-WAN solution with hub-and-spoke topology using MPLS as the preferred network over the Internet. A network engineer must implement an application-aware routing policy to allow ICMP traffic to be load-balanced over both the available links. Which configuration meets the requirement?  
A)

```
app-route-policy _VPN_10_AAR
vpn-list VPN_50
sequence 21
match
app-list ICMP
source-ip 0.0.0.0/0
!
action
sla-class ICMP_SLA preferred-color public-internet
sla-class ICMP_SLA preferred-color mpls
```

B)

```
app-route-policy _VPN_10_AAR
vpn-list VPN_50
sequence 21
match
app-list ICMP
source-ip 0.0.0.0/0
!
action
sla-class ICMP_SLA
```

C)

```
app-route-policy _VPN_10_AAR
vpn-list VPN_50
sequence 21
match
app-list ICMP
source-ip 0.0.0.0/0
!
action
sla-class ICMP_SLA preferred-color mpls
backup-sla-preferred-color public-internet
```

D)

```
app-route-policy _VPN_10_AAR
vpn-list VPN_50
sequence 21
match
app-list ICMP
source-ip 0.0.0.0/0
!
action
sla-class ICMP_SLA preferred-color mpls public-internet
```

- A. Option A
- B. Option B
- C. Option C
- D. Option D

**Answer:** C**NEW QUESTION 242**

At which layer does the application-aware firewall block applications on a WAN Edge?

- A. 3
- B. 7
- C. 5
- D. 2

**Answer:** B**NEW QUESTION 245**

Drag and drop the actions from the left into the correct sequence on the right to create a data policy to direct traffic to the Internet exit.





- A. Mastered
- B. Not Mastered

**Answer:** A

**Explanation:**

Step 1 – Enable NAT Functionality Step 2 – Create centralized data policy  
Step 3 – Identify VPN and match criteria Step 4 – Apply data policy

**NEW QUESTION 248**

Which type of connection is created between a host VNet and a transit VNet when configuring Cloud OnRamp for IaaS?

- A. Azure private endpoint
- B. GRE tunnel
- C. IPsec tunnel
- D. Azure peer link

**Answer:** C

**NEW QUESTION 251**

Refer to the exhibit

```
vpn 1
service netsvc1 interface ipsec1

from-vsmart data-policy _1_ServiceIsertionIPSec
direction from-service
vpn-list 1
sequence 1
match
destination-ip 1.1.1.1/32
action accept
set
service netsvc1
default-action accept
from-vsmart lists vpn-list 1
vpn 1
```

Which command allows traffic through the IPsec tunnel configured in VPN 0?

- A. service local
- B. service FW address 1.1.1.1
- C. service netsvc1 vpn 1
- D. service netsvc1 address 1.1.1.1

**Answer:** B

**Explanation:**

<https://www.cisco.com/c/en/us/td/docs/routers/sdwan/configuration/policies/vedge-20-x/policies-book/service-c>

**NEW QUESTION 253**

Which service VPN must be reachable from all WAN Edge devices and the controllers?

- A. VPN0
- B. VPN10
- C. VPN215
- D. VPN512

**Answer:** A

#### NEW QUESTION 256

An engineer wants to track tunnel characteristics within an SLA-based policy for convergence. Which policy configuration will achieve this goal?

- A. App-route policy
- B. VPN membership policy
- C. Control policy
- D. Data policy

**Answer: A**

#### Explanation:

An application-aware routing policy matches applications with an SLA, that is, with the data plane tunnel performance characteristics that are necessary to transmit the applications' data traffic. The primary purpose of application-aware routing policy is to optimize the path for data traffic being transmitted by Cisco SD-WAN devices.

#### NEW QUESTION 258

Which policy is configured to ensure that a voice packet is always sent on the link with less than a 50 msec delay?

- A. localized data policy
- B. localized control policy
- C. centralized data policy
- D. centralized control policy

**Answer: C**

#### NEW QUESTION 261

A network administrator is creating an OMP feature template from the vManage GUI to be applied to WAN edge routers. Which configuration attribute will avoid the redistribution of the routes back into the OMP from the LAN side?

- A. configure "Number of Paths Advertised per Prefix"
- B. configure "Overlay AS Number"
- C. configure "Send Backup Paths"
- D. configure "ECMP limit"

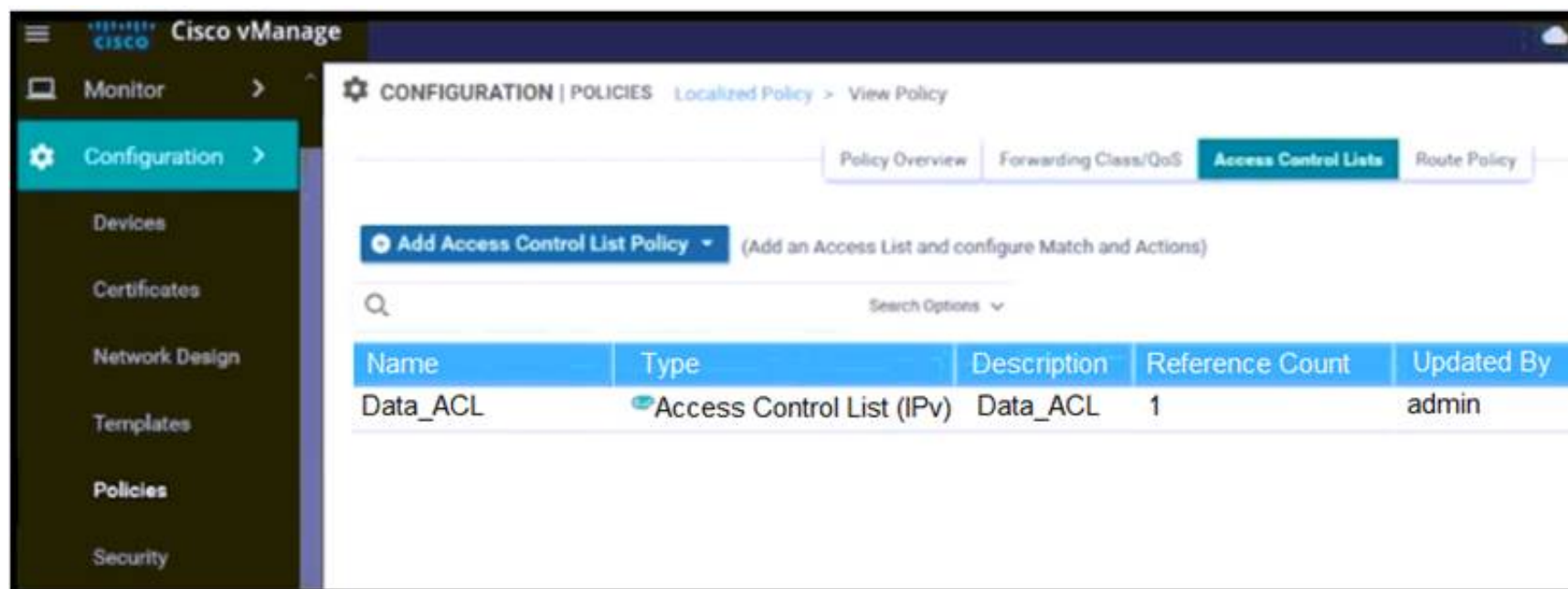
**Answer: B**

#### Explanation:

If you configure the same overlay AS number on multiple vEdge routers in the overlay network, all these routers are considered to be part of the same AS, and as a result, they do not forward any routes that contain the overlay AS number. This mechanism is an additional technique for preventing BGP routing loops in the network.

#### NEW QUESTION 262

Refer to the exhibit.



An engineer must block FTP traffic coming in from a particular Service VPN on a WAN Edge device Which set of steps achieves this goal?

- A. Create a localized policy and add it to (he interface feature template
- B. Create a localized policy add it to the device template and add an ACL to the interface feature template
- C. Create a prefix tat, add it to the localized policy and add it to the interface feature template
- D. Create a localized policy add it to VPN template and add an ACL to the interface feature template

**Answer: C**

#### NEW QUESTION 264

Drag and drop the REST API calls from the left onto the functions on the right.

PUT	Retrieve or read.
GET	Update an object.
POST	Create an object.
DELETE	Remove an object.

- A. Mastered
- B. Not Mastered

**Answer:** A

**Explanation:**

- **GET:** Get resource from the server.
- **POST:** Create resource to the server.
- **PATCH or PUT:** Update existing resource on the server.
- **DELETE:** Delete existing resource from the server.

#### NEW QUESTION 268

Which protocol is used to measure loss latency, Jitter, and liveliness of the tunnel between WAN Edge router peers?

- A. OMP
- B. IP SLA
- C. NetFlow
- D. BFD

**Answer:** D

#### NEW QUESTION 273

WAN Edge routers are configured manually to use UDP port offset to use nondefault offset values when IPsec tunnels are created. What is the offse range?

- A. 1-19
- B. 0-18
- C. 0-19
- D. 1-18

**Answer:** C

#### NEW QUESTION 278

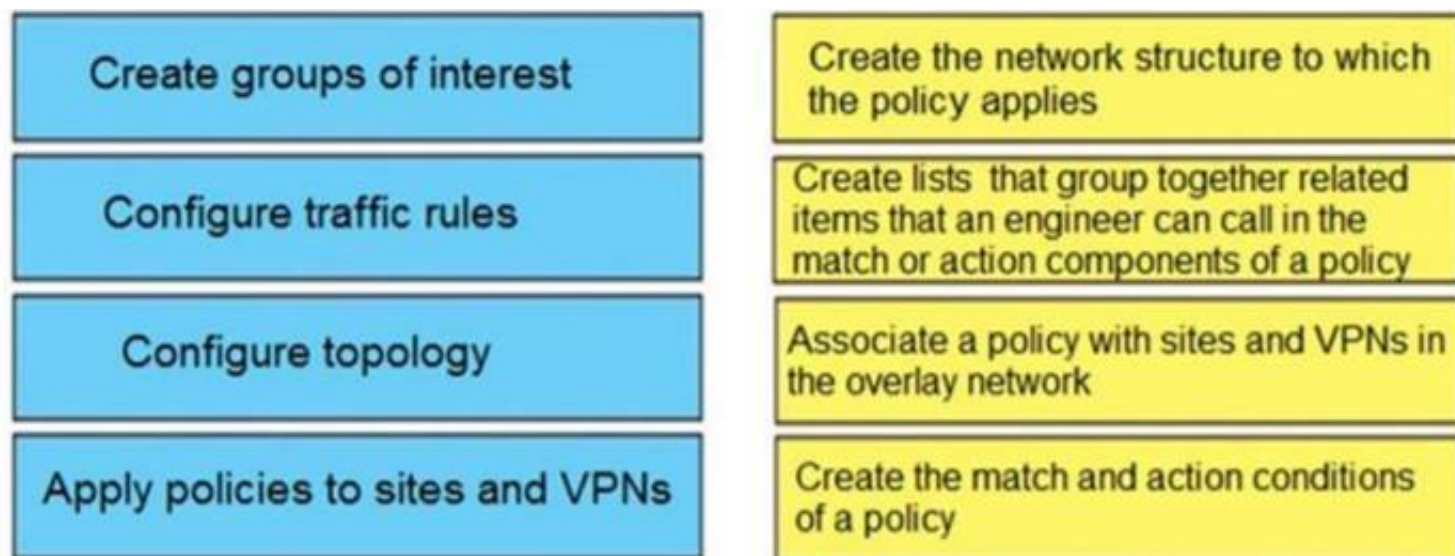
Which two performance data details are provided by Cisco SO-WAN vAnalytics? (Choose two)

- A. jitter loss and latency for data tunnels
- B. application quality of experience score from zero to ten
- C. detail on total cost of ownership for the fabric
- D. certificate authority status (health and expiration dates) for all controllers
- E. view devices connected to a vManage NMS

**Answer:** AB

#### NEW QUESTION 280

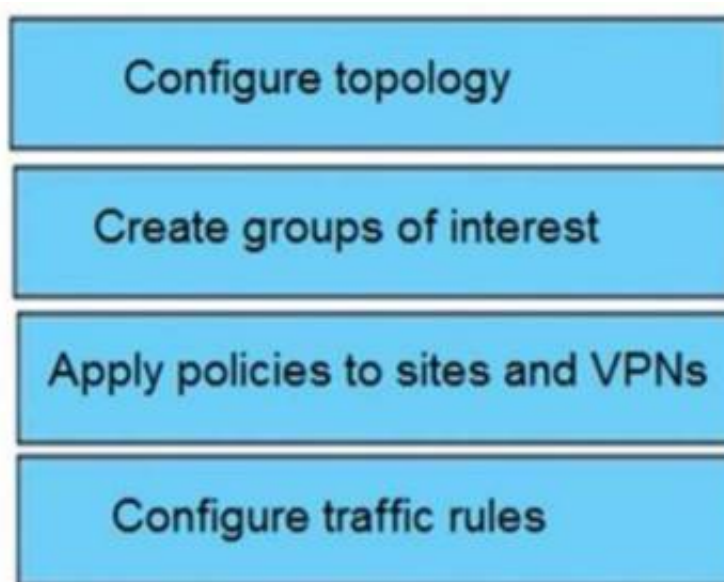
Drag and drop the vManage policy configuration procedures from the left onto the correct definitions on the right.



- A. Mastered  
B. Not Mastered

**Answer:** A

**Explanation:**



#### NEW QUESTION 285

An engineer must use data prefixes to configure centralized data policies using the vManage policy configuration wizard. What is the first step to accomplish this task?

- A. Create groups of interest  
B. Configure network topology.  
C. Configure traffic rules.  
D. Apply policies to sites and VPNs.

**Answer:** A

#### NEW QUESTION 288

A customer must upgrade the cisco SD-WAN devices and controllers from version 19.2 to version 20.3. The devices include WAN Edge cloud, vManage, vSmart, and vBond. Which types of image types of image files are needed for this upgrade?

- A. one file for vManage and one file for all other devices with extension tar.gz  
B. one file for vManage, one for vSmart and one for vBond + WAN Edge Cloud with extension.bin  
C. one file for vManaga, one for vSmart and one for vBond + WAN Edge Cloud with extension tar.gz  
D. one file for vManaga and one file for all other devices with extension .bin

**Answer:** C

**Explanation:**

<https://software.cisco.com/download/home/286320995/type/286321394/release/20.3.3.1>

#### NEW QUESTION 289

Which command verifies a policy that has been pushed to the vEdge router?

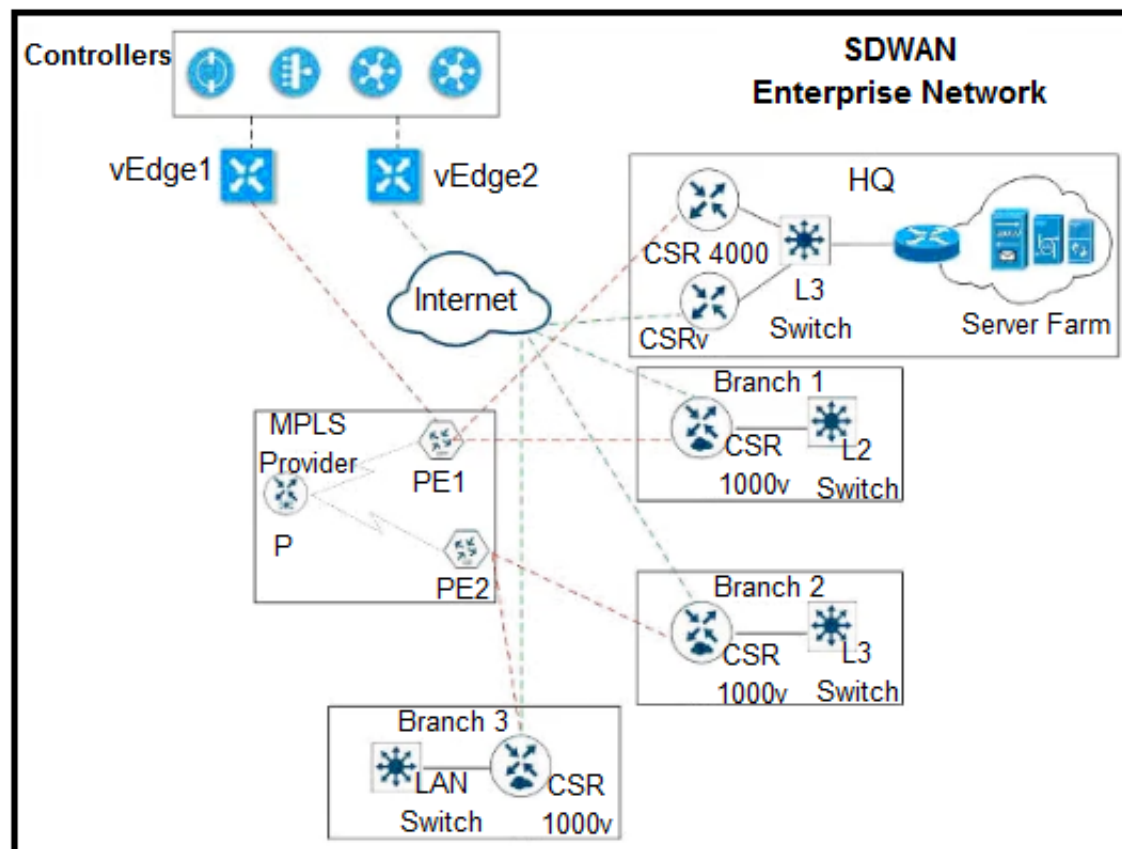
- A. vEdge# show running-config data policy  
B. vEdge# show policy from-vsmart  
C. vSmart# show running-config policy  
D. vSmart# show running-config apply-policy

**Answer:** B



**NEW QUESTION 292**

Refer to the exhibit



The network team must configure EIGRP peering at HQ with devices in the service VPN connected to WAN Edge CSRv. CSRv is currently configured with

```
viptela-system:system
device-model vedge-cloud
host-nam CSRv
location CA
system-ip 10.4.4.4
domain-id 1
site-id 1
organization-name ABC
clock timezone US/Newyork
vbond 10.10.0.1 port 12346
```

```
omp
no shutdown
graceful-restart
```

Which configuration on the WAN Edge meets the requirement?

Which configuration on the WAN Edge meets the requiremnet

A)

```
vpn 0
router
eigrp
address-family ipv4-unicast
maximum-path paths 4
network 10.0.0.0/28
redistribute omp

interface ge0/0
description "Internet Circuit"
ip address 209.165.200.229/30
tunnel-interface
encapsulation ipsec
color public-internet
allow-service all

vpn 512
interface eth0
shutdown
```

B)

☐ vpn 0  
vpn 1  
interface ge0/0  
description "Internet Circuit"  
ip address 209.165.200.229/30  
tunnel-interface  
encapsulation ipsec  
color public-internet  
allow-service all  
  
router  
eigrp  
address-family ipv4-unicast  
maximum-path paths 4  
network 10.0.0.0/28  
redistribute omp  
  
interface ge0/1  
ip address 10.0.0.1/28  
  
vpn 512  
interface eth0  
shutdown

C)

☐ vpn 0  
interface ge0/0  
description "Internet Circuit"  
ip address 209.165.200.229/30  
tunnel-interface  
encapsulation ipsec  
color public-internet  
allow-service all  
  
vpn 1  
router  
eigrp  
address-family ipv4-unicast  
maximum-path paths 4  
network 10.0.0.0/28  
redistribute omp  
  
interface ge0/1  
ip address 10.0.0.1/28  
  
vpn 512  
interface eth0  
shutdown

D)

☐ vpn 0  
interface ge0/0  
description "Internet Circuit"  
ip address 209.165.200.229/30  
tunnel-interface  
encapsulation ipsec  
color public-internet  
allow-service all  
  
router  
eigrp  
address-family ipv4-unicast  
maximum-path paths 4  
network 10.0.0.0/28  
redistribute omp  
  
vpn 512  
interface eth0  
shutdown

- A. Option A
- B. Option B
- C. Option C
- D. Option D

Answer: C

**NEW QUESTION 296**

Refer to the exhibit.

#Branch1-Edge1	#Branch1-Edge2
vpn 0	vpn 0
!	...
interface ge0/1	interface ge0/2
ip address	no shutdown
172.17.113.241/28	!
tunnel-interface	interface ge0/2.704
encapsulation ipsec	ip address 10.113.4.1/30
color mpls restrict	tunnel-interface
!	encapsulation ipsec
no shutdown	color mpls restrict
!	mtu 1496
interface ge0/2.704	no shutdown
ip address 10.113.4.2/30	!
tloc-extension ge0/2	ip route 0.0.0.0/0 10.113.4.2

Which configuration change is needed to configure the tloc-extension on Branch1-Edge1?

- A. interface ge0/2.704  
ip address 10.113.4.1/30  
tunnel-interface  
encapsulation ipsec  
color mpls restrict  
no shutdown
- B. interface ge0/2.704  
ip address 10.113.4.2/30  
mtu 1496  
tloc-extension ge0/1
- C. interface ge0/2.704  
ip address 10.113.4.2/30  
mtu 1496  
tloc-extension ge0/2
- D. interface ge0/2.704  
ip address 10.113.4.1/30  
tunnel-interface  
encapsulation ipsec  
color mpls restrict  
mtu 1496  
tloc-extension ge0/2  
no shutdown

- A. Option A
- B. Option B
- C. Option C
- D. Option D

**Answer:** B

#### NEW QUESTION 299

Refer to the exhibit



PEER TYPE	PEER PROTOCOL	PEER SYSTEM IP	SITE ID	DOMAIN ID	PEER PRIVATE IP	PEER PRIVATE PORT	PEER PUBLIC IP	PEER PUBLIC PORT	LOCAL COLOR	STATE	LOCAL/REMOTE	REPEAT COUNT
vbond	dtls	-	0	0	1.1.10.10	12346	1.1.10.10	12346	apls	tear_down	CRTREJSEH NOERR	161
vbond	dtls	-	0	0	1.1.10.10	12346	1.1.10.10	12346	silver	tear_down	CRTREJSEH NOERR	161
vbond	dtls	-	0	0	1.2.20.20	12346	1.2.20.20	12346	apls	tear_down	CRTREJSEH NOERR	160
vbond	dtls	-	0	0	1.2.20.20	12346	1.2.20.20	12346	silver	tear_down	CRTREJSEH NOERR	160

A WAN Edge device was recently added to vManage but a control connection could not be established Which action resolves this issue?

- A. Rectify the Rod CA certificate mismatch on WAN Edge devices
- B. Install the bootstrap code on WAN Edge and check for CSR
- C. Send the serial number to vBond from the vManage controller.
- D. Resolve the ZTP reachability and rectify smart account credentials issue

**Answer: C**

### NEW QUESTION 302

What is the result during a WAN Edge software upgrade process if the version of the WAN Edge software is higher than the one running on a controller device?

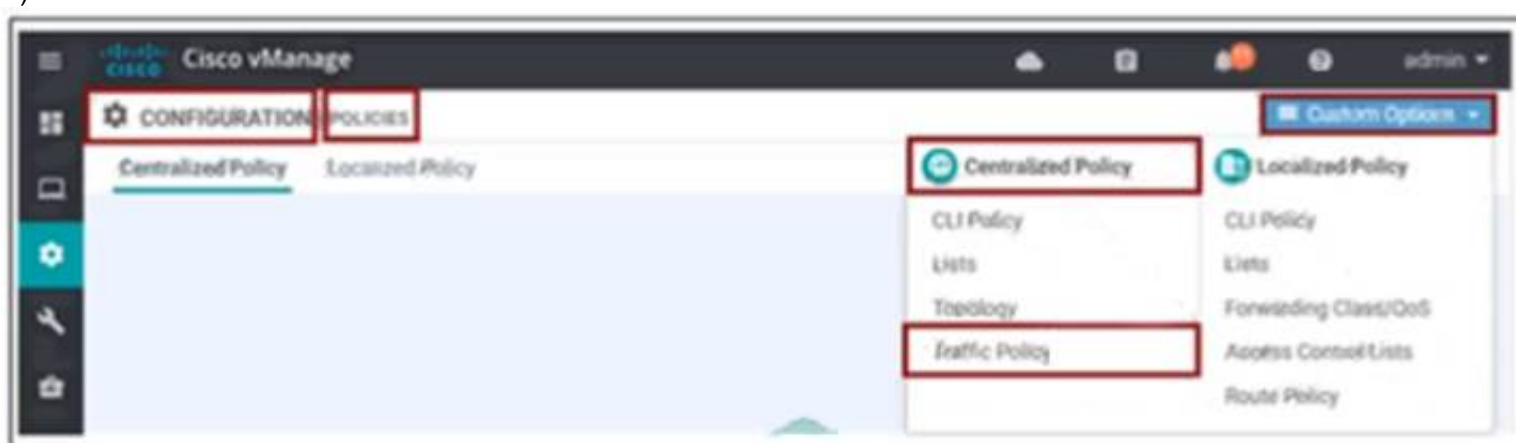
- A. The upgrade button is greyed out
- B. The upgrade proceeds with no warning message.
- C. The upgrade fails with a warning message
- D. The upgrade proceeds with a warning message

**Answer: D**

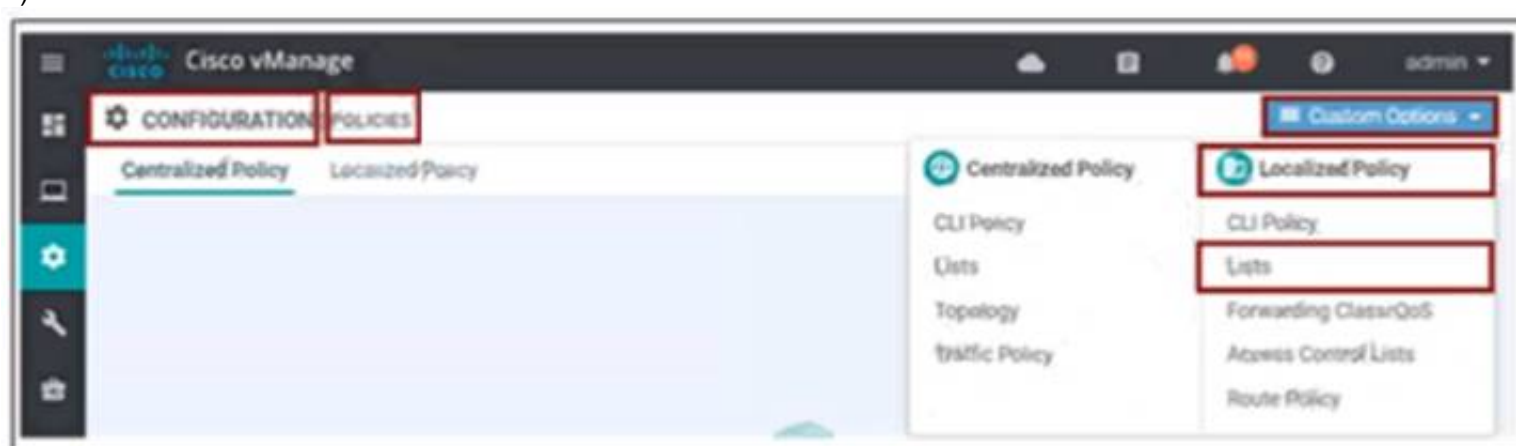
### NEW QUESTION 307

An engineer must create a QoS policy by creating a class map and assigning it to the LLQ queue on a WAN Edge router Which configuration accomplishes the task?

A)



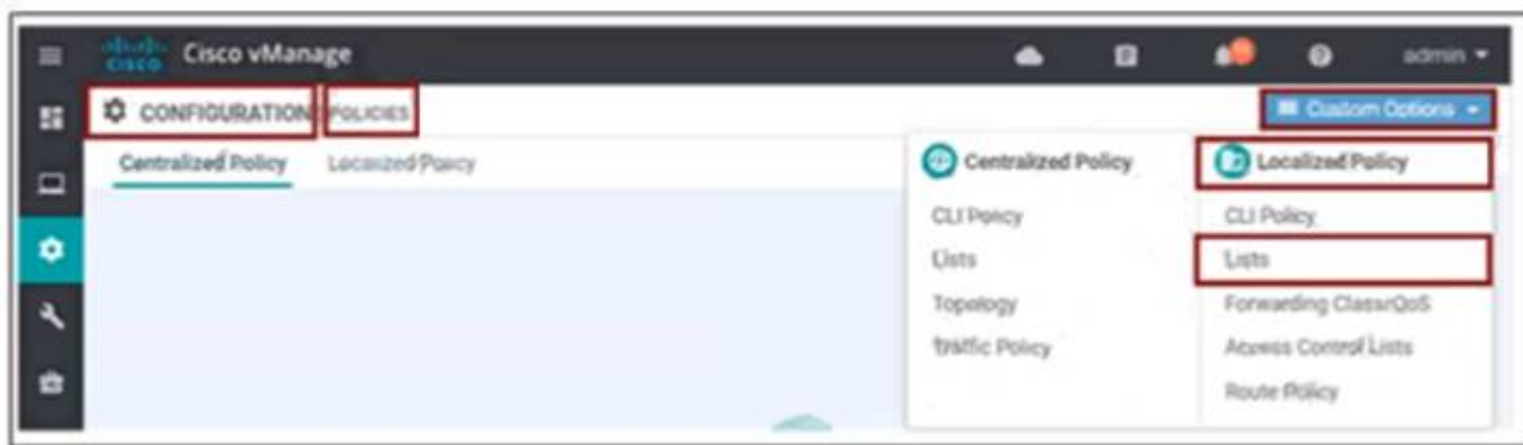
B)



C)



D)



- A. Option A
- B. Option B
- C. Option C
- D. Option D

**Answer: D**

#### NEW QUESTION 312

Refer to the exhibit.

Hostname	State	System IP	Reachability	Site ID	Device Model	BFD	Control
BR1-VEGE1	✓	10.3.0.1	reachable	300	vEdge Cloud	8	5

What does the BFD value of 8 represent?

- A. number of BFD sessions
- B. hello timer of BFD session
- C. poll-interval of BFD session.
- D. dead timer of BFD session

**Answer: A**

#### NEW QUESTION 313

Which protocol is configured on tunnels by default to detect loss, latency, jitter, and path failures in Cisco SD-WAN?

- A. TLS
- B. BFD
- C. OMP
- D. BGP

**Answer: B**

#### NEW QUESTION 316

How is the software managed in Cisco SD-WAN?

- A. Software images must be uploaded to vManage through HTTP or FTP
- B. Software downgrades are unsupported for vManage
- C. Software images must be transferred through VPN 512 or VPN 0 of vManage
- D. Software upgrade operation in the group must include vManag
- E. vBond, and vSmart.

**Answer: A**

#### NEW QUESTION 318

An engineer is configuring a list that matches all IP prefixes with lengths from /1 to /16 in a centralized control policy. Which list accomplishes this task?

- A. 0.0.0.0/1 le 16
- B. 0.0.0.0/0 ge 1
- C. 0.0.0.0/0 le 16
- D. 0.0.0.0/16 ge 1

**Answer: A**

#### NEW QUESTION 323

In the Cisco SD\_WAN solution, vSmart controller is responsible for which two actions? (Choose two.)

- A. Distribute crypto key information among vEdge routers
- B. Configure and monitor vEdge routers.
- C. Authenticate and authorize vEdge routers.
- D. Distribute the IP address from DHCP server to vEdge routers.
- E. Distribute route and policy information via OMP.



**Answer:** AE

**Explanation:**

vSmart controller - This software-based component is responsible for the centralized control plane of the SD-WAN network. It maintains a secure connection to each WAN Edge router and distributes routes and policy information via the Overlay Management Protocol (OMP), acting as a route reflector. It also orchestrates the secure data plane connectivity between the WAN Edge routers by reflecting crypto key information originating from WAN Edge routers, allowing for a very scalable, IKE-less architecture.

**NEW QUESTION 326**

Refer to the exhibit.

<b>vManage</b>  system system-ip 10.11.11.1 host-name vManage site-id 1 clock timezone Europe/London vbond 11.1.1.3 organization-name Cisco.com Vpn 0 Interface eth1 Ip address 11.1.1.1/24 No shut Tunnel-interface Allow-service all Ip route 0.0.0.0/0 11.1.1.254	<b>vSmart</b>  system system-ip 10.11.11.1 host-name vSmart site-id 1 clock timezone Europe/Rome vbond 11.1.1.3 organization-name Cisco.com Vpn 0 Interface eth1 Ip address 11.1.1.2/24 No shut Tunnel-interface Allow-service all Ip route 0.0.0.0/0 11.1.1.254
<b>vBond</b>  system system-ip 10.11.11.3 host-name vManage site-id 1 clock timezone Europe/London vbond 11.1.1.1 local organization-name Cisco.com Vpn 0 Interface ge0/0 Ip address 11.1.1.3/28 No shut Tunnel-interface Encapsulation ipsec Allow-service all Ip route 0.0.0.0/0 11.1.1.254	

vManage and vSmart have an issue establishing a connection to vBond. Which configuration resolves the issue?

- A. Configure the tunnel interface on all three controllers with a color of transport.
- B. Change the timezone on the vSmart to Europe/London.
- C. Configure the (11.1.1.X/24) IP addresses on the elhO interfaces on vManage and vSmart.
- D. Reconfigure the system-ip parameter on vSmart to 11.1.1.2.

**Answer:** B

**NEW QUESTION 330**

How does the replicator role function in cisco SD-WAN?

- A. WAN Edge devices advertise the rendezvous point to all the receivers through the underlay network.
- B. vSmart Controllers advertise the rendezvous point to all the receivers through the overlay network.
- C. WAN Edge devices advertise the rendezvous point to all receivers through the overlay network.
- D. vSmart Controllers advertise the rendezvous point to all the receivers through the underlay network.

**Answer:** B

**Explanation:**

Replicators

For efficient use of WAN bandwidth, strategic Cisco SD-WAN routers can be deployed and configured as replicators throughout the overlay network. Replicators mitigate the requirement for a Cisco SD-WAN router with local sources or the PIM-RP to replicate a multicast stream once for each receiver. As discussed above, replicators advertise themselves, using OMP multicast-autodiscover routes, to the Cisco vSmart Controllers in the overlay network. The controllers then forward the replicator location information to the PIM-enabled Cisco IOS XE SD-WAN routers that are in the same VPN as the replicator.

**NEW QUESTION 331**

Which two products that perform lifecycle management for virtual instances are supported by WAN Edge cloud routers? (Choose two.)

- A. OpenStack
- B. AWS
- C. VMware vCenter
- D. Azure
- E. IBM Cloud

**Answer:** AC

**Explanation:**

<https://www.cisco.com/c/en/us/solutions/collateral/enterprise-networks/sd-wan/nb-07-cloud-router-data-sheet-ct>

The following figure illustrates Cisco vEdge Cloud router solution elements.



**NEW QUESTION 336**

Which destination UDP port is used by WAN Edge router to make a DTLS connection with vBond Orchestrator?

- A. 12343
- B. 12345
- C. 12346
- D. 12347

**Answer:** C

**NEW QUESTION 340**

In which VPN is the NAT operation on an outgoing interface configured for direct Internet access?

- A. 1
- B. 10
- C. 512

**Answer:** D

**NEW QUESTION 341**

Refer to the exhibit.

Update Device Template	
Variable List (Hover over each field for more information)	
System IP	10.4.4.4
Hostname	ST1_VE01
Prefix(vEdge_Default_Gateway)	0.0.0.0/0
Prefix(Mpls_Default_Gateway)	0.0.0.0/0
Address(vEdge_Next_Hop_IP)	10.50.0.102
Address(MPLS_Next_hop_ip)	10.20.0.102
Hostname(Device_host_name)	vEdge-Cloud
Location(Device_location)	US
Latitude(Device_latitude)	40.7128
Longitude(Device_longitude)	74.0060
System IP(Device_system_ip)	10.4.4.4
Site ID(Device_site_id)	1



vManage logs are available for the past few months. A device name change deployed mistakenly at a critical site. How is the device name change tracked by operation and design teams?

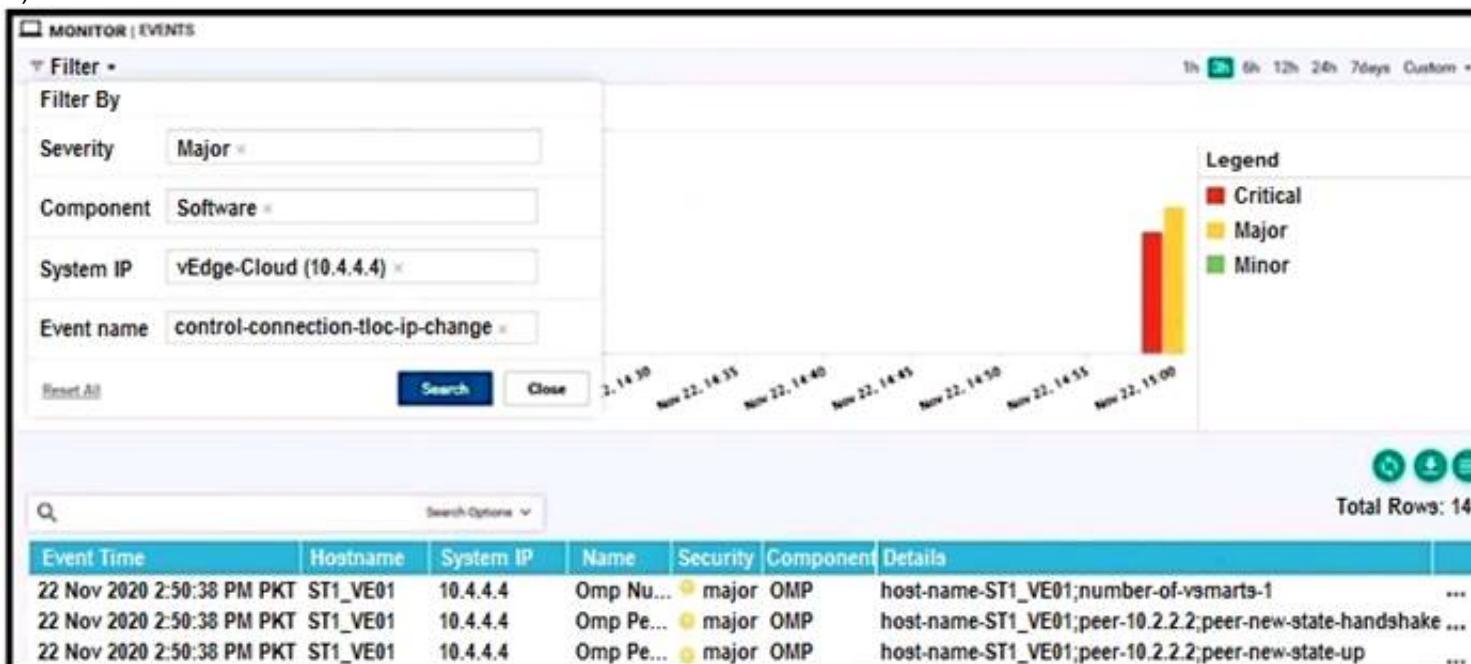
A)



B)



C)



D)

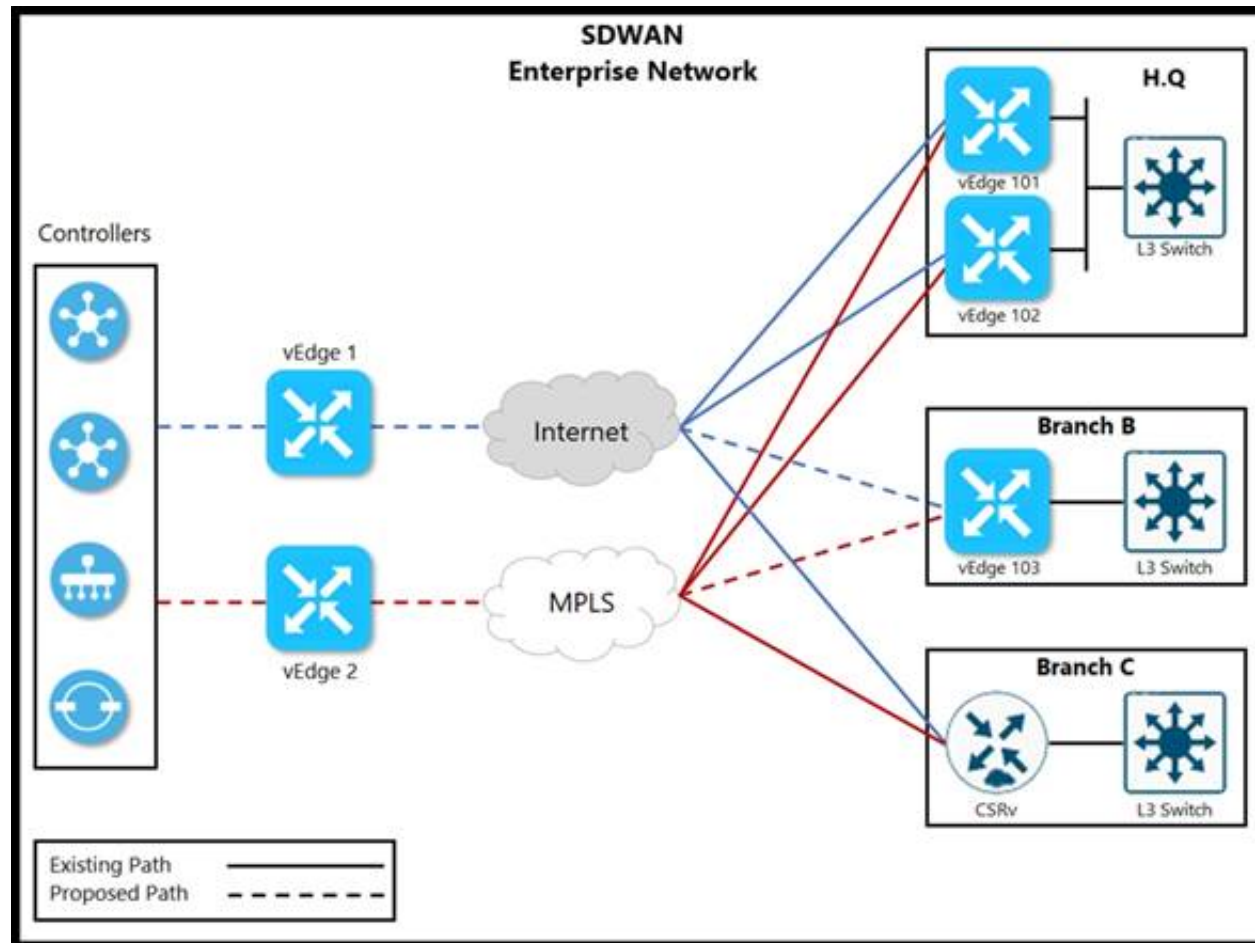


- A. Option A
- B. Option B
- C. Option C
- D. Option D

Answer: D

#### NEW QUESTION 342

Refer to the exhibit.



The network team must configure branch B WAN Edge device 103 to establish dynamic full-mesh IPsec tunnels between all colors with branches over MPLS and Internet circuits. The branch is configured with:

```
viptela-system:system
device-model vedge-cloud
host-nam vEdge-Cloud
location CA
system-ip 10.4.4.4
domain-id 1
site-id 1
organization-name ABC
clock timezone US/Newyork
vbond 10.10.0.1 port 12346

omp
no shutdown
graceful-restart

vpn 512
interface eth0
ip address 10.0.0.1/24
no shutdown
```

Which configuration meets the requirement?

```
A)
vpn 0
interface ge0/0
description "Internet Circuit"
ip address 209.165.200.225/30
tunnel-interface
encapsulation ipsec
color public-internet
allow-service all

interface ge0/1
description "MPLS"
ip address 10.10.0.101/30
tunnel-interface
encapsulation ipsec
color mpls
allow-service all
```

B)

```
vpn 0
interface ge0/0
description "Internet Circuit"
ip address 209.165.200.225/30
tunnel-interface
encapsulation ipsec
color public-internet restrict
allow-service all
```

```
interface ge0/1
description "MPLS"
ip address 10.10.0.101/30
tunnel-interface
encapsulation ipsec
color mpls restrict
allow-service all
```

C)

```
vpn 0
interface ge0/0
description "Internet Circuit"
ip address 209.165.200.225/30
tunnel-interface
encapsulation ipsec
color public-internet restrict
allow-service all
```

```
interface ge0/1
description "MPLS"
ip address 10.10.0.101/30
tunnel-interface
encapsulation ipsec
color mpls restrict
allow-service all
```

D)

```
vpn 0
interface ge0/0
description "Internet Circuit"
ip address 209.165.200.225/30
tunnel-interface
encapsulation ipsec
color public-internet
allow-service all
```

```
vpn 1
interface ge0/1
description "MPLS"
ip address 10.10.0.101/30
tunnel-interface
encapsulation ipsec
color mpls
```

- A. Option A
- B. Option B
- C. Option C
- D. Option D

**Answer:** A

#### NEW QUESTION 346

A voice packet requires a latency of 50 msec. Which policy is configured to ensure that a voice packet is always sent on the link with less than a 50 msec delay?

- A. centralized control
- B. localized data
- C. localized control
- D. centralized data

**Answer:** D

#### Explanation:

<https://www.cisco.com/c/en/us/td/docs/routers/sdwan/configuration/policies/ios-xe-17/policies-book-xe/applicat>

#### NEW QUESTION 347

An engineer creates this data policy for DIA for VPN 10:

```
data-policy DIA
vpn-list VPN-10
sequence 10
match
destination-data-prefix-list INTERNAL-NETWORKS
!
action accept
```

Which policy sequence enables DIA for external networks?



- ☐ sequence 5  
match  
source-ip 0.0.0.0/0  
!  
action accept  
nat use-vpn 0
- ☐ sequence 5  
match  
destination-ip 0.0.0.0/0  
!  
action reject  
!  
default-action accept
- ☐ sequence 20  
match  
destination-ip 0.0.0.0/0  
!  
action accept  
nat use-vpn 0
- ☐ sequence 20  
match  
source-ip 0.0.0.0/0  
!  
action reject  
!  
default-action accept

- A. Option A  
B. Option B  
C. Option C  
D. Option D

Answer: C

#### NEW QUESTION 350

Drag and drop the steps from the left into the sequence on the right for a WAN Edge router after powering on for zero touch provisioning.

Router contacts a DNS service.	1
Router establishes a connection to vBond.	2
Router contacts a DHCP server.	3
Router connects to the ZTP server.	4

- A. Mastered  
B. Not Mastered

Answer: A

Explanation:

Router contacts a DNS service.	Router contacts a DHCP server.
Router establishes a connection to vBond.	Router contacts a DNS service.
Router contacts a DHCP server.	Router connects to the ZTP server.
Router connects to the ZTP server.	Router establishes a connection to vBond.

**NEW QUESTION 355**

How is a TLOC uniquely identified from a WAN Edge router to the SD-WAN transport network?

- A. system IP address
- B. VPN ID
- C. OMP
- D. SD-WAN site ID

**Answer:** A

**NEW QUESTION 356**

A network administrator is tasked to make sure that an OMP peer session is closed after missing three consecutive keepalive messages in 3 minutes. Additionally, route updates must be sent every minute. If a WAN Edge router becomes unavailable, the peer must use last known information to forward packets for 12 hours. Which set of configuration commands accomplishes this task?

- ☒ `omp  
timers  
  advertisement-interval 60  
  holdtime 180  
  graceful-restart-timer 43200`
- ☐ `omp  
timers  
  advertisement-interval 1  
  holdtime 180  
  graceful-restart-timer 43200`
- ☐ `omp  
timers  
  advertisement-interval 1  
  holdtime 180  
  graceful-restart-timer 720`
- ☐ `omp  
timers  
  advertisement-interval 60  
  holdtime 60  
  graceful-restart-timer 720`

- A. Option A
- B. Option B
- C. Option C
- D. Option D

**Answer:** A

**Explanation:**

[https://sdwan-docs.cisco.com/Product\\_Documentation/vManage\\_Help/Release\\_17.2/Configuration/Templates/O](https://sdwan-docs.cisco.com/Product_Documentation/vManage_Help/Release_17.2/Configuration/Templates/O)

**NEW QUESTION 357**

Which component is responsible for routing protocols such as BGP and OSPF in a Cisco SD-WAN solution?

- A. vSmart Controller
- B. vBond Orchestrator
- C. vManage
- D. WAN Edge Router

**Answer:** D

**Explanation:**

WAN Edge router - This device, available as either a hardware appliance or software-based router, sits at a physical site or in the cloud and provides secure data plane connectivity among the sites over one or more WAN transports. It is responsible for traffic forwarding, security, encryption, quality of service (QoS), routing protocols such as Border Gateway Protocol (BGP) and Open Shortest Path First (OSPF), and more.

**NEW QUESTION 358**

An administrator needs to configure SD-WAN to divert traffic from the company's private network to an ISP network. What action should be taken to accomplish this goal?

- A. configure the control policy
- B. configure the data policy
- C. configure the data security policy
- D. configure the application aware policy

**Answer:** B

**Explanation:**

Data policy influences the flow of data traffic traversing the network

**NEW QUESTION 363**

How are policies deployed on cloud-hosted Cisco SD-WAN controllers?

- A. Policies are created on vSmart and enforced by vSmart
- B. Policies are created on vSmart and enforced by vManage
- C. Policies are created on vManage and enforced by vManage.
- D. Policies are created on vManage and enforced by vSman

**Answer:** A

**NEW QUESTION 368**

Which component of the Cisco SD-WAN architecture oversees the control plane of overlay network to establish, adjust, and maintain the connections between the WAN Edge devices that form the Cisco SD-WAN fabric?

- A. APIC-EM
- B. vManage
- C. vSmart
- D. vBond

**Answer:** C

**Explanation:**

Cisco vSmart Controller

The Cisco vSmart Controller oversees the control plane of the Cisco SD-WAN overlay network, establishing, adjusting, and maintaining the connections that form the Cisco SD-WAN fabric.

**NEW QUESTION 373**

Which issue triggers the Cisco Umbrella resolver to forward DNS requests to the intelligent proxy? Which issue triggers the Cisco Umbrella resolver to forward DNS requests to the intelligent proxy?

- A. A domain is nonexistent.
- B. A domain is block-listed.
- C. A domain is locally reachable.
- D. A domain is grey-listed.

**Answer:** D

**NEW QUESTION 376**

How do WAN Edge devices operate when vSmart is inaccessible or fails to be reached by the WAN Edge?

- A. They cease to forward traffic in the data plane.
- B. They continue operation normally.
- C. They continue to receive reachability updates.
- D. They continue operating normally for a configurable time.

**Answer:** D

**NEW QUESTION 378**

Which two mechanisms are used by vManage to ensure that the certificate serial number of the WAN Edge router that is needed to authenticate is listed in the WAN Edge Authorized Serial Number List? (Choose two)

- A. Synchronize to the PnP
- B. Manually upload it to vManage
- C. The devices register to vManage directly as the devices come online
- D. The vManage is shipped with the list
- E. Synchronize to the Smart Account

**Answer:** BE

**NEW QUESTION 381**

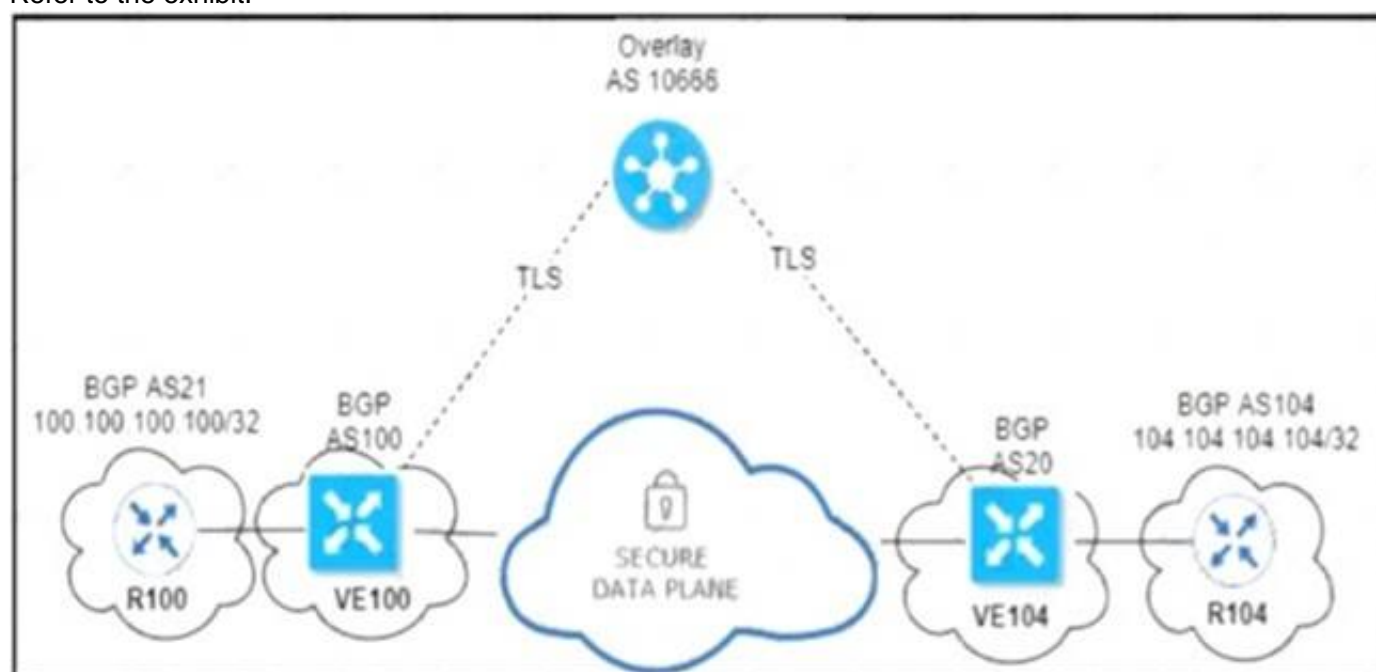
Which SD-WAN component allows an administrator to manage and store software images for SD-WAN network elements?

- A. vBond controllers
- B. WAN Edge routers
- C. vSman controllers
- D. vManage NMS

**Answer:** D

#### NEW QUESTION 384

Refer to the exhibit.



An engineer configured OMP with an overlay-as of 10666. What is the AS-PATH for prefix 104.104.104.104/32 on R100?

- A. 100 10666
- B. 100 20 104
- C. 100 10666 20 104
- D. 100 10666 104

**Answer:** A

#### NEW QUESTION 385

A policy is created to influence routing in the network using a group of prefixes. What policy application will achieve this goal when applied to a site list?

- A. Vpn-membership policy
- B. Control-policy
- C. cflowd-template
- D. App-route policy

**Answer:** B

#### Explanation:

Control policy, which is similar to standard routing policy, operates on routes and routing information in the control plane of the overlay network. Centralized control policy, which is provisioned on the Cisco vSmart Controller, is the Cisco SD-WAN technique for customizing network-wide routing decisions that determine or influence routing paths through the overlay network. Local control policy, which is provisioned on a Cisco vEdge device, allows customization of routing decisions

#### NEW QUESTION 388

Which feature allows reachability to an organization's internally hosted application for an active DNS security policy on a device?

- A. local domain bypass
- B. DHCP option 6
- C. DNSCrypt configurator
- D. data pokey with redirect

**Answer:** A

#### Explanation:

<https://www.cisco.com/c/en/us/td/docs/routers/sdwan/configuration/security/ios-xe-16/security-book-xe/umbrell>

- Local domain bypass list is global and each VRF can enable or disable the local domain bypass list. If enabled, the DNS packet will be matched against the local domain list.

#### NEW QUESTION 391

Refer to the exhibit

PEER PRIVATE IP	PEER PRIVATE PORT	PEER PUBLIC IP	PEER PUBLIC PORT	REMOTE COLOR	STATE	LOCAL ERROR
10.0.2.73	23456	10.0.2.73	23456	default	trying	DCONFALL

Cisco SD-WAN is deployed with controllers hosted in a data center All branches have WAN Edge devices with dual connections to the data center one via Internet and the other using MPLS Three branches out of 20 have issues with their control connections on MPLS circuit The local error refers to Control Connection Failure Which action resolves the issue\*?



- A. Rectify any issues with the underlay routing configuration
- B. Match the TLOC color on the controllers and all WAN Edge devices
- C. Match certificates for the DTLS connection and Root CA must be installed first on WAN Edge devices
- D. Update the system IP on vManage and then resend it to the controllers

**Answer:** A

#### NEW QUESTION 396

Drag and drop the definitions from the left to the configuration on the right.

matching condition that allows traffic flow between two zones	destination zone
grouping of VPNs where the data traffic flows originate	firewall policy
container that associates forwarding and blocking decisions	source zone
grouping of VPNs where the data traffic flows terminate	zone pair

- A. Mastered
- B. Not Mastered

**Answer:** A

#### Explanation:

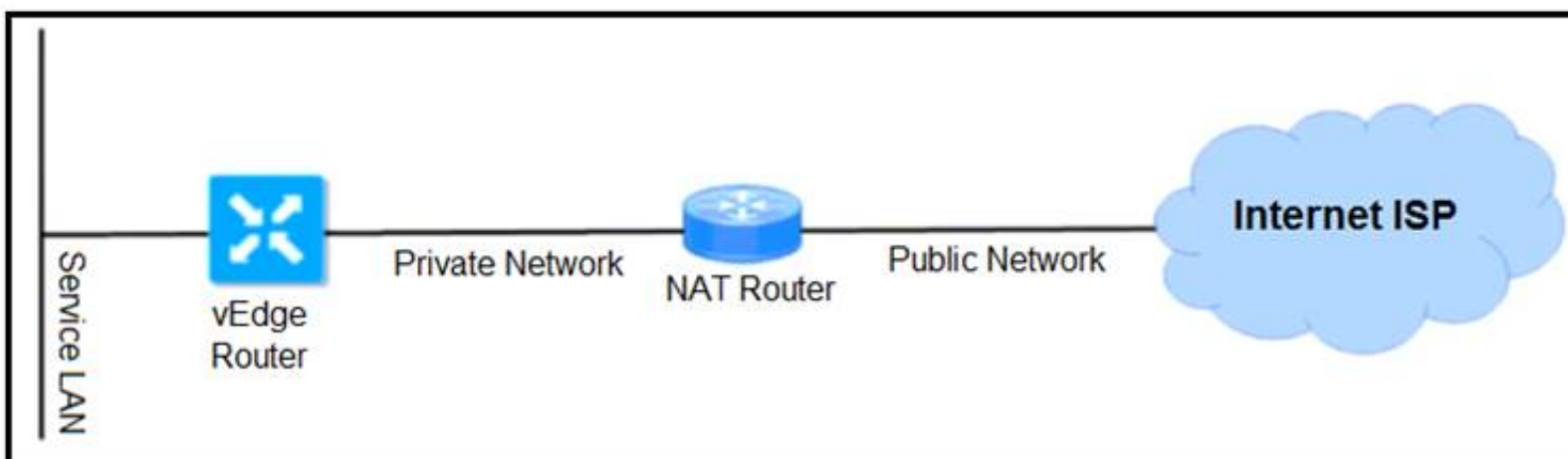
- **Source zone**—A grouping of VPNs where the data traffic flows originate.
- **Destination zone**—A grouping of VPNs where the data traffic flows terminate. A VPN can be part of only one zone
- **Zone-based firewall policy**—A data policy, similar to a localized data policy, that defines the conditions that the data traffic flow from the source zone must match to allow the flow to continue to the destination zone. Zone-based firewalls can match IP prefixes, IP ports, and protocols TCP, UDP, and ICMP. Matching flows can be accepted or dropped, and the packet headers can be logged. Nonmatching flows are dropped by default.
- **Zone pair**—A container that associates a source zone with a destination zone and that applies a zone-based firewall policy to the traffic that flows between zones.

Service Chaining

Traffic Flow Monitoring with Cflow

#### NEW QUESTION 397

Refer to the exhibit



Which NAT types must the engineer configure for the vEdge router to bring up the data plane tunnels?

- A. Enable Full Cone NAT on the vEdge interface
- B. Use public color on the TLOC
- C. Use private color on the TLOC
- D. Enable Symmetric NAT on the vEdge interface

**Answer:** A

#### NEW QUESTION 401

What is a benefit of the application-aware firewall?

- A. It blocks traffic by MAC address



- B. It blocks traffic by MTU of the packet.
- C. It blocks traffic by application.
- D. It blocks encrypted traffic

**Answer:** C

#### NEW QUESTION 403

What is the OMP graceful restart default value on vSmart controllers and WAN Edge routers?

- A. 21,600 seconds
- B. 43,200 seconds
- C. 86,400 seconds
- D. 604,800 seconds

**Answer:** B

#### NEW QUESTION 404

Which OMP route is selected for equal OMP route preference values on WAN Edge routers?

- A. route with higher TLOC preference value
- B. route with origin type of connected
- C. route with origin type of static
- D. route with lower TLOC preference value

**Answer:** A

#### NEW QUESTION 405

Which OSPF command makes the WAN Edge router a less preferred exit from a site with a dual WAN Edge design?

A)

```
vpn vpn-id
router
ospf
area number
range prefix/length
```

B)

```
vpn vpn-id
router
ospf
max-metric
```

C)

```
vpn vpn-id
router
ospf
area number
no-summary
```

D)

```
vpn vpn-id
router
ospf
area number
nssa
no-summary
```

- A. Option A
- B. Option B
- C. Option C
- D. Option D

**Answer:** B

#### NEW QUESTION 408

The network administrator is configuring a QoS scheduling policy on traffic received from transport side tunnels on WAN Edge 5000 routers at location 406141498. Which command must be configured on these devices?

- A. cloud-qos
- B. service qos
- C. cloud-mis qos
- D. mis qos

**Answer:** A

#### NEW QUESTION 411

REST applications communicate over HTTP or HTTPS to make calls between network devices. Which two HTTPS standard methods are included? (Choose two.)

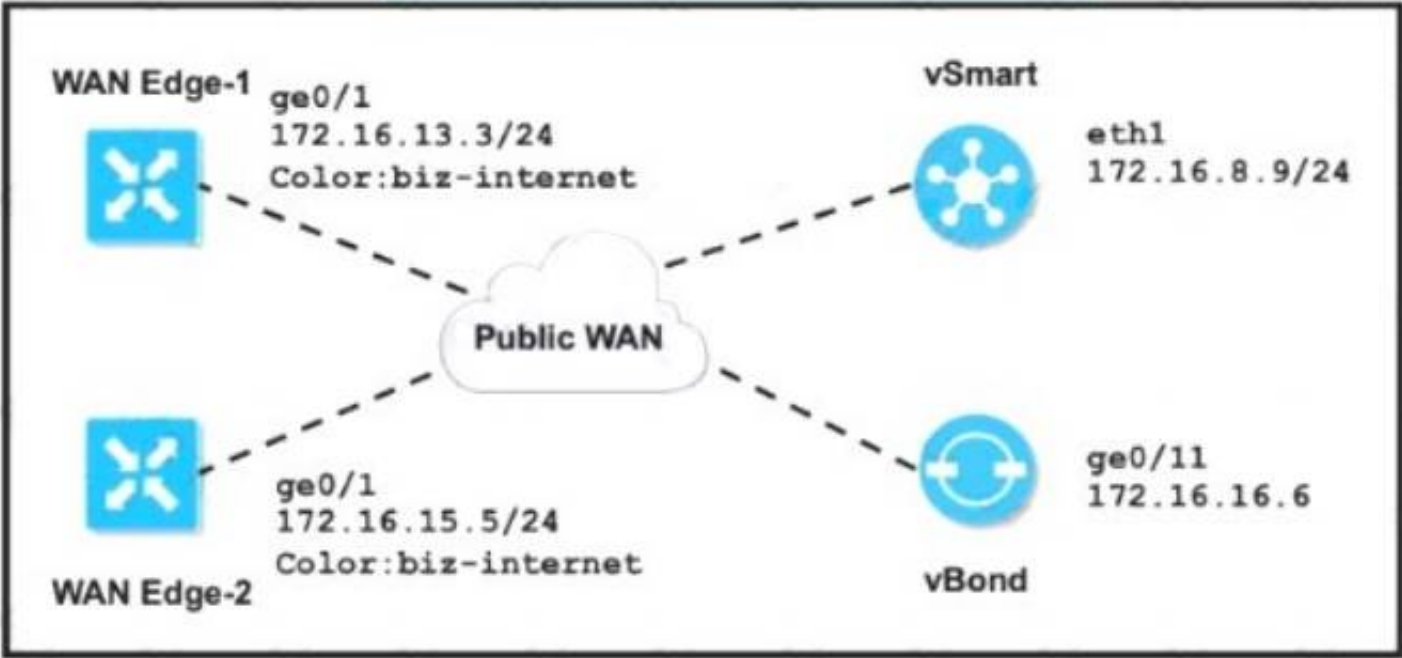
- A. Array

- B. DELETE
- C. POST
- D. Scalar
- E. Object

Answer: BC

NEW QUESTION 414

Refer to the exhibit.



The tunnel interface configuration on both WAN Edge routers is:

```
vpn 0
interface ge0/1
tunnel-interface
encapsulation ipsec
color biz-internet
allow-service dhcp
allow-service dns
allow-service icmp
no allow-service sshd
no allow-service ntp
no allow-service stun
!
no shutdown
```

Which configuration for WAN Edge routers will connect to the Internet?

- ☐ vpn 0  
interface ge0/1  
ip address 172.16.15.5/24  
!  
ip route 0.0.0.0/0 172.16.13.1
- ☐ vpn 0  
interface ge0/1  
ip address 172.16.13.3/24  
!  
ip route 0.0.0.0/0 172.16.13.1
- ☐ vpn 0  
interface ge0/1  
ip address 172.16.13.3/24  
!  
ip route 0.0.0.0/0 172.16.8.1
- ☐ vpn 0  
interface ge0/1  
ip address 172.16.15.5/24  
!  
ip route 0.0.0.0/0 172.16.8.1

- A. Option A
- B. Option B
- C. Option C
- D. Option D

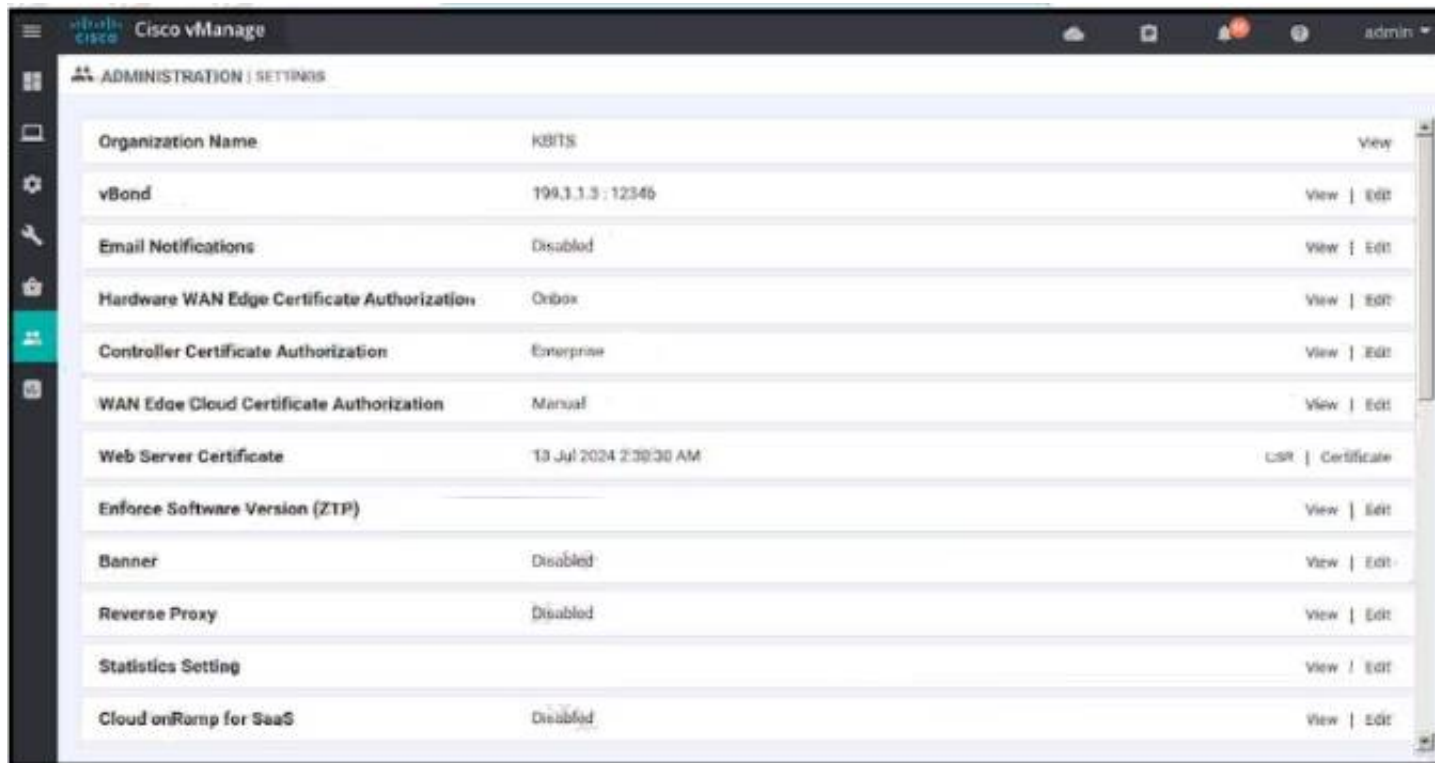
Answer: B

Explanation:

[https://sdwan-docs.cisco.com/Product\\_Documentation/Software\\_Features/SD-WAN\\_Release\\_16.3/02System\\_a](https://sdwan-docs.cisco.com/Product_Documentation/Software_Features/SD-WAN_Release_16.3/02System_a)

NEW QUESTION 415

Refer to the exhibit.



Which two configurations are needed to get the WAN Edges registered with the controllers when certificates are used? (Choose two)

- A. Generate a CSR manually within vManage server
- B. Generate a CSR manually on the WAN Edge
- C. Request a certificate manually from the Enterprise CA server
- D. Install the certificate received from the CA server manually on the WAN Edge
- E. Install the certificate received from the CA server manually on the vManage

**Answer:** AE

**Explanation:**

<https://www.cisco.com/c/dam/en/us/td/docs/solutions/CVD/SDWAN/cisco-sd-wan-certificates-deploy-2020aug>.

#### NEW QUESTION 420

A network administrator is configuring a tunnel interface on a branch Cisco IOS XE router to run TLOC extensions. Which configuration will extend a TLOC over a GRE tunnel to another router in the branch?

- ☒ A. 

```
sdwan
interface g0/0
  extended-interface
  tloc-extension-gre-from 10.1.1.1
```
- ☐ B. 

```
sdwan
interface g0/0
  gre-interface
  tloc-extension-gre-to 10.1.1.1
```
- ☐ C. 

```
sdwan
interface g0/0
  tunnel-interface
  tloc-extension-gre-to 10.1.1.1
```
- ☐ D. 

```
sdwan
interface g0/0
  tloc-interface
  tloc-extension-gre-from 10.1.1.1
```

- A. Option A
- B. Option B
- C. Option C
- D. Option D

**Answer:** C

**Explanation:**

Configure a tunnel interface over which to run TLOC extensions (on IOS XE routers only). TLOC extensions allow you to extend a TLOC, over a GRE tunnel, to another router in the branch.

## Command Hierarchy

```
sdwan
  interface interface-name
    tunnel-interface
      tloc-extension-gre-to extended-interface-ip-address
```

### NEW QUESTION 422

Which two products are used to deploy Cisco WAN Edge Router virtual platforms? (Choose two.)

- A. HP ProLiant DL360 Generation10 running HP-UX
- B. Cisco ENCS 5000 Series
- C. Sun SPARC Node running AIX
- D. Cisco UCS
- E. Sun Enterprise M4000 Server running Sun Solans

**Answer:** BD

#### Explanation:

<https://www.cisco.com/c/en/us/products/collateral/routers/5400-enterprise-network-compute-system/datasheet-c>

### NEW QUESTION 426

Which device should be configured with the service chain IP address to route intersite traffic through a firewall?

- A. vSmart
- B. firewall
- C. spoke WAN Edge
- D. hub WAREdge

**Answer:** A

### NEW QUESTION 431

A customer wants to use AWS for Cisco SD-WAN IaaS services by deploying virtual SD-WAN routers in a transit AWS VPC. The transit VPC then connects via site-to-site IPsec tunnels to an AWS transit gateway. Which transit VPC connects via site-to-site IPsec tunnels to an AWS transit gateway?

- A. Cisco Cloud onRamp for Multicloud
- B. Cisco Cloud onRamp for SaaS
- C. Cisco Cloud onRamp for Colocation
- D. Cisco Cloud onRamp for IaaS

**Answer:** D

### NEW QUESTION 435

Drag and drop the devices from the left onto the correct functions on the right.

vSmart	establishes a secured data plane
vManage	first point of authentication
vEdge	single pane of glass
vBond	enforces control policies

- A. Mastered
- B. Not Mastered

**Answer:** A

#### Explanation:





**NEW QUESTION 440**

What is the order of operations for software upgrades of Cisco SD-WAN nodes'?

- A. vBond vManage vSmart WAN Edge
- B. vManage vBond WAN Edg
- C. vSmart
- D. vManage vSmart, vBond, WAN Edge
- E. vManage vBond vSraart WAN Edge

**Answer:** D

**NEW QUESTION 442**

Which two vRoute attributes should be matched or set in vSmart policies and modified by data policies? (Choose two.)

- A. site ID
- B. preference
- C. VPN
- D. TLOC
- E. origin

**Answer:** BC

**NEW QUESTION 445**

.....

## Thank You for Trying Our Product

\* 100% Pass or Money Back

All our products come with a 90-day Money Back Guarantee.

\* One year free update

You can enjoy free update one year. 24x7 online support.

\* Trusted by Millions

We currently serve more than 30,000,000 customers.

\* Shop Securely

All transactions are protected by VeriSign!

**100% Pass Your 300-415 Exam with Our Prep Materials Via below:**

<https://www.certleader.com/300-415-dumps.html>