

Exam Questions MD-100

Windows 10

<https://www.2passeasy.com/dumps/MD-100/>



NEW QUESTION 1

- (Exam Topic 4)

You have a computer that runs Windows 10. You can start the computer but cannot sign in.

You need to start the computer into the Windows Recovery Environment (WinRE). What should you do?

- A. Turn off the compute
- B. Turn on the computer, and then press F8.
- C. Turn off the compute
- D. Turn on the computer, and then press F10.
- E. From the sign-in screen, hold the Shift key, and then click Restart.
- F. Hold Alt+Ctrl+Delete for 10 seconds.

Answer: C

Explanation:

References:

<https://docs.microsoft.com/en-us/windows-hardware/manufacture/desktop/windows-recovery-environment--win>

NEW QUESTION 2

- (Exam Topic 4)

Your company purchases 20 laptops that use a new hardware platform. In a test environment, you deploy Windows 10 to the new laptops. Some laptops frequently generate stop errors.

You need to identify the cause of the issue. What should you use?

- A. Reliability Monitor
- B. Task Manager
- C. System Configuration
- D. Performance Monitor

Answer: A

Explanation:

References:

<https://lifehacker.com/how-to-troubleshoot-windows-10-with-reliability-monitor-1745624446>

NEW QUESTION 3

- (Exam Topic 4)

You have a computer named Computer1 that runs Windows 10. Computer1 has the local users shown in the following table.

Name	Member of
User1	Administrators
User2	Event Log readers
User3	Device Owners
User4	Power Users
User5	Users

Which users can analyze the event logs on Computer1? To answer, select the appropriate options in the answer area.

NOTE: Each correct selection is worth one point.

Users who can analyze security event logs:

▼

☐ User1 only
 ☐ User1 and User2 only
 ☐ User1 and User2, and User3 only
 ☐ User1, User2, User3, and User4 only
 ☐ User1, User2, User3, User4, and User5

Users who can analyze system event logs:

▼

☐ User1 only
 ☐ User1 and User2 only
 ☐ User1 and User2, and User3 only
 ☐ User1, User2, User3, and User4 only
 ☐ User1, User2, User3, User4, and User5

- A. Mastered
- B. Not Mastered

Answer: A

Explanation:

References:

<https://docs.microsoft.com/en-us/windows/security/identity-protection/access-control/local-accounts#sec-localsy>

NEW QUESTION 4

- (Exam Topic 4)

You have three computers that run Windows 10 as shown in the following table.

Name	TPM version	Operating system
Computer1	None	Windows 10 Enterprise
Computer2	2.0	Windows 10 Pro
Computer3	1.2	Windows 10 Enterprise

All the computers have C and D volumes. The Require additional authentication at startup Group Policy settings is disabled on all the computers. Which volumes can you encrypt by using BitLocker Drive Encryption (BitLocker)? To answer, select the appropriate options in the answer area.

NOTE: Each correct selection is worth one point.

Answer Area

You can encrypt volume C on:

▼

Computer1 only

Computer2 only

Computer3 only

Computer1 and Computer3 only

Computer2 and Computer3 only

Computer1, Computer2 and Computer3

You can encrypt volume D on:

▼

Computer1 only

Computer2 only

Computer3 only

Computer1 and Computer3 only

Computer2 and Computer3 only

Computer1, Computer2 and Computer3

A. Mastered

B. Not Mastered

Answer: A

Explanation:

Volume C on = Computer 2 and 3 only Volume D on = C1, C2, C3

The "Require additional authentication at startup" setting is located in the Computer Configuration\ Administrative Templates\ Windows Components\ BitLocker Drive Encryption\ Operating System Drives path. If the policy is disabled and there is no TPM chip installed, operating system drives can not be encrypted using BitLocker. Additional data volumes can be protected using a password as a key protector for example.

References:

<https://www.windowscentral.com/how-use-bitlocker-encryption-windows-10>

NEW QUESTION 5

- (Exam Topic 4)

You have 100 computers that run Windows 10. The computers are joined to an Azure AD tenant and enrolled in Microsoft Intune. The computers are in remote locations and connected to public networks.

You need to recommend a solution for help desk administrators that meets the following requirements:

- Connect remotely to a user's computer to perform troubleshooting.
- Connect to a user's computer without disrupting the desktop of the computer.
- Remotely view services, performance counters, registry settings, and event logs.

Which tool should you include in the recommendation?

A. Quick Assist

B. Intune

C. Remote Assistance

D. Windows Admin Center

Answer: C

NEW QUESTION 6

- (Exam Topic 4)

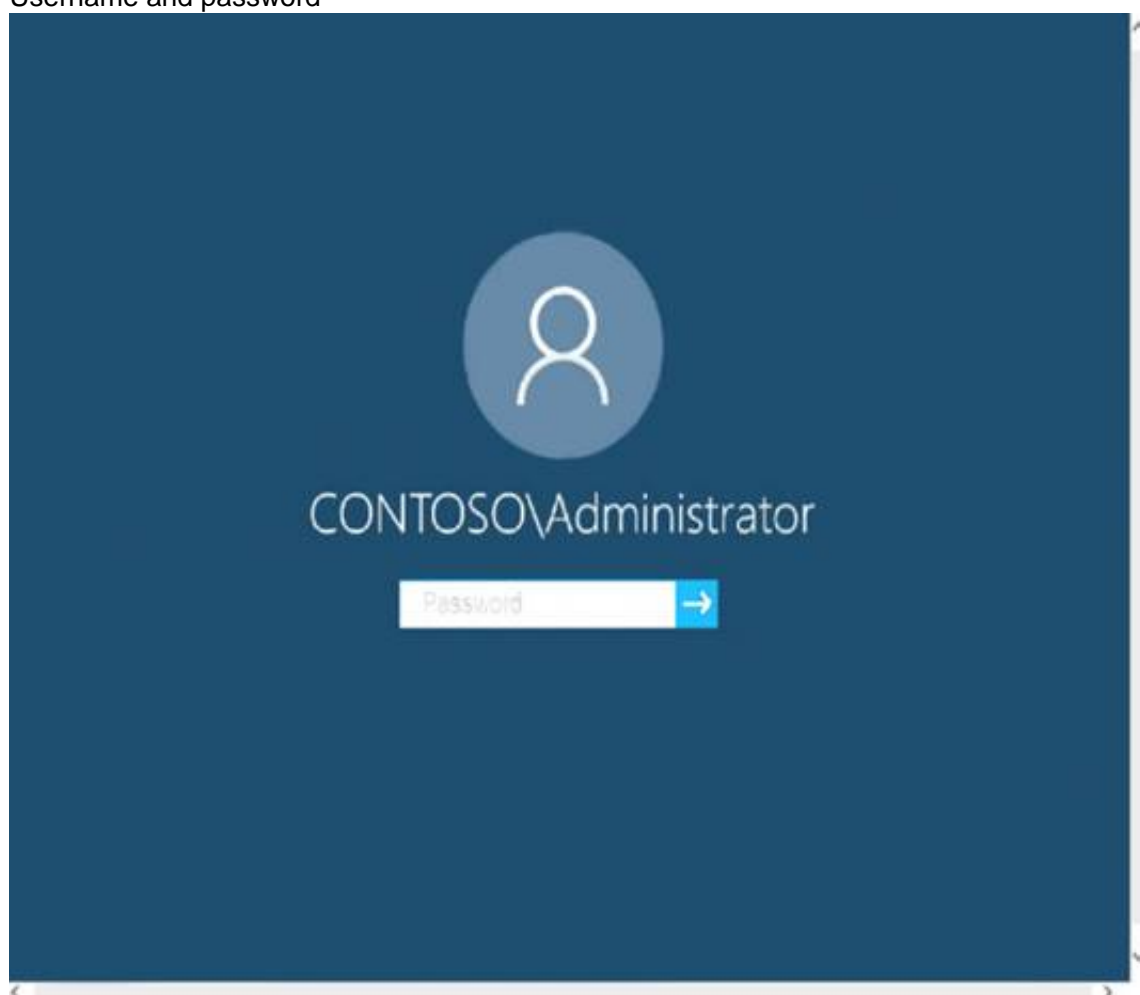
Please wait while the virtual machine loads. Once loaded, you may proceed to the lab section. This may take a few minutes, and the wait time will not be deducted from your overall test time.

When the Next button is available, click it to access the lab section. In this section, you will perform a set of tasks in a live environment. While most functionality will be available to you as it would be in a live environment, some functionality (e.g., copy and paste, ability to navigate to external websites) will not be possible by design.

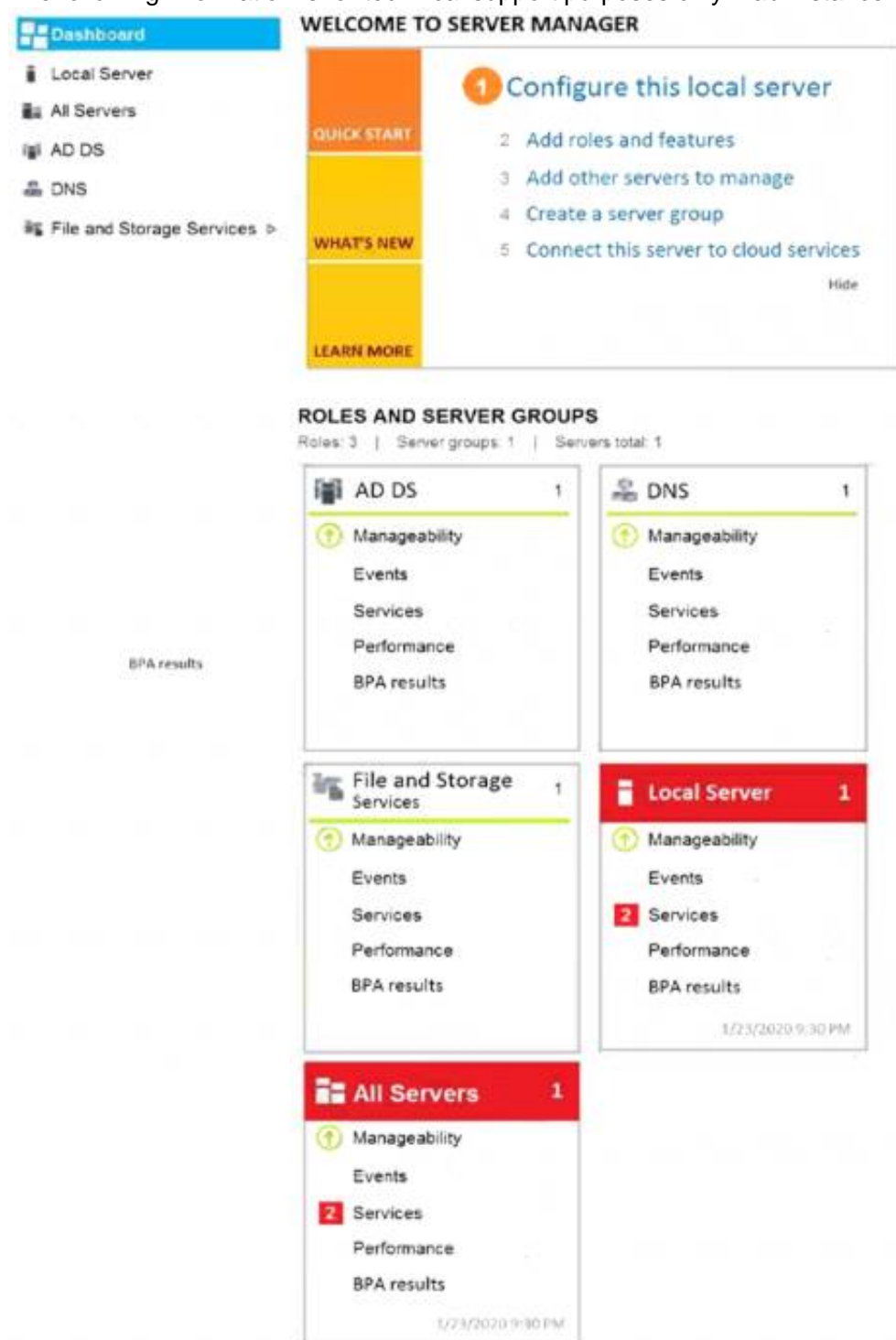
Scoring is based on the outcome of performing the tasks stated in the lab. In other words, it doesn't matter how you accomplish the task, if you successfully perform it, you will earn credit for that task.

Labs are not timed separately, and this exam may more than one lab that you must complete. You can use as much time as you would like to complete each lab. But, you should manage your time appropriately to ensure that you are able to complete the lab(s) and all other sections of the exam in the time provided. Please note that once you submit your work by clicking the Next button within a lab, you will NOT be able to return to the lab.

Username and password



Use the following login credentials as needed:
 To enter your password, place your cursor in the Enter password box and click on the password below.
 Username: Contoso/Administrator
 Password: Passw0rd!
 The following information is for technical support purposes only: Lab Instance: 11145882



Tasks Computers



Users in the Finance group report that they cannot copy files to Client1\Finance. You need to resolve the issue. To complete this task, sign in to the required computer or computers.

- A. Mastered
- B. Not Mastered

Answer: A

Explanation:

- > Open File Explorer.
- > Browse and find the file or folder you want to have full access.
- > Right-click it, and select Properties.
- > Click the Security tab to access the NTFS permissions.
- > Click the Advanced button.
- > On the "Advanced Security Settings" page, you need to click the Change link, in the Owner's field.
- > Click the Advanced button.
- > On the "Select User or Group" page, click the Find Now button.
- > From the search result, select your user account, and click OK.
- > On the "Select User or Group" page, click OK.
- > Click Apply.
- > Click OK.
- > Click OK again.
- > Click OK one more time to complete this task.

It's important to note that if you're taking ownership of a folder, you can check the Replace ownership on subcontainers and object option in the Advanced Security Settings page to take control of the subfolders inside of the folder.

Now you'll need to grant full access control to your account, to do this use the following steps:

- > Right-click the file or folder and select Properties.
- > Click the Security tab to access the NTFS permissions.
- > Click the Advanced button.
- > Under the Permissions tab, click Add.
- > Click Select a principal to add your user account.
- > On the "Select User or Group" page, click the Find Now button.
- > From the search result, select your user account, and click OK.
- > On the "Select User or Group" page, click OK.
- > On "Permission Entry", check the Full control option.
- > Click OK.
- > Click OK.
- > Click Apply.
- > Click OK.
- > Click OK to close the file or folder properties to complete the task.

You can now assign the necessary permissions to the Finance group.

If you right-click on a file or folder, choose Properties and click on the Security tab, we can now try to edit some permissions. Go ahead and click the Edit button to get started.

At this point, there are a couple of things you can do. Firstly, you'll notice that the Allow column is probably greyed out and can't be edited. This is because of the inheritance I was talking about earlier. However, you can check items on the Deny column.

When you click the Add button, you have to type in the user name or group name into the box and then click on Check Names to make sure it's correct. If you don't remember the user or group name, click on the Advanced button and then just click Find Now. It will show you all the users and groups.

Click OK and the user or group will be added to the access control list. Now you can check the Allow column or Deny column.

Reference:

<https://www.windowscentral.com/how-take-ownership-files-and-folders-windows-10> <https://www.online-tech-tips.com/computer-tips/set-file-folder-permissions-windows/>

NEW QUESTION 7

- (Exam Topic 4)

You have computers that run Windows 11 as shown in the following table.

Name	IP address	Joined to
Computer1	192.168.10.10	Active Directory
Computer2	192.168.10.15	Workgroup

You ping 192.168.10.15 from Computer1 and discover that the request timed out. You need to ensure that you can successfully ping 192.168.10.15 from Computer1. Solution: On Computer2, you enable PowerShell Remoting. Does this meet the goal?

- A. Yes
- B. No

Answer: A

NEW QUESTION 8

- (Exam Topic 4)

Please wait while the virtual machine loads. Once loaded, you may proceed to the lab section. This may take a few minutes, and the wait time will not be deducted from your overall test time.

When the Next button is available, click it to access the lab section. In this section, you will perform a set of tasks in a live environment. While most functionality will be available to you as it would be in a live environment, some functionality (e.g., copy and paste, ability to navigate to external websites) will not be possible by design.

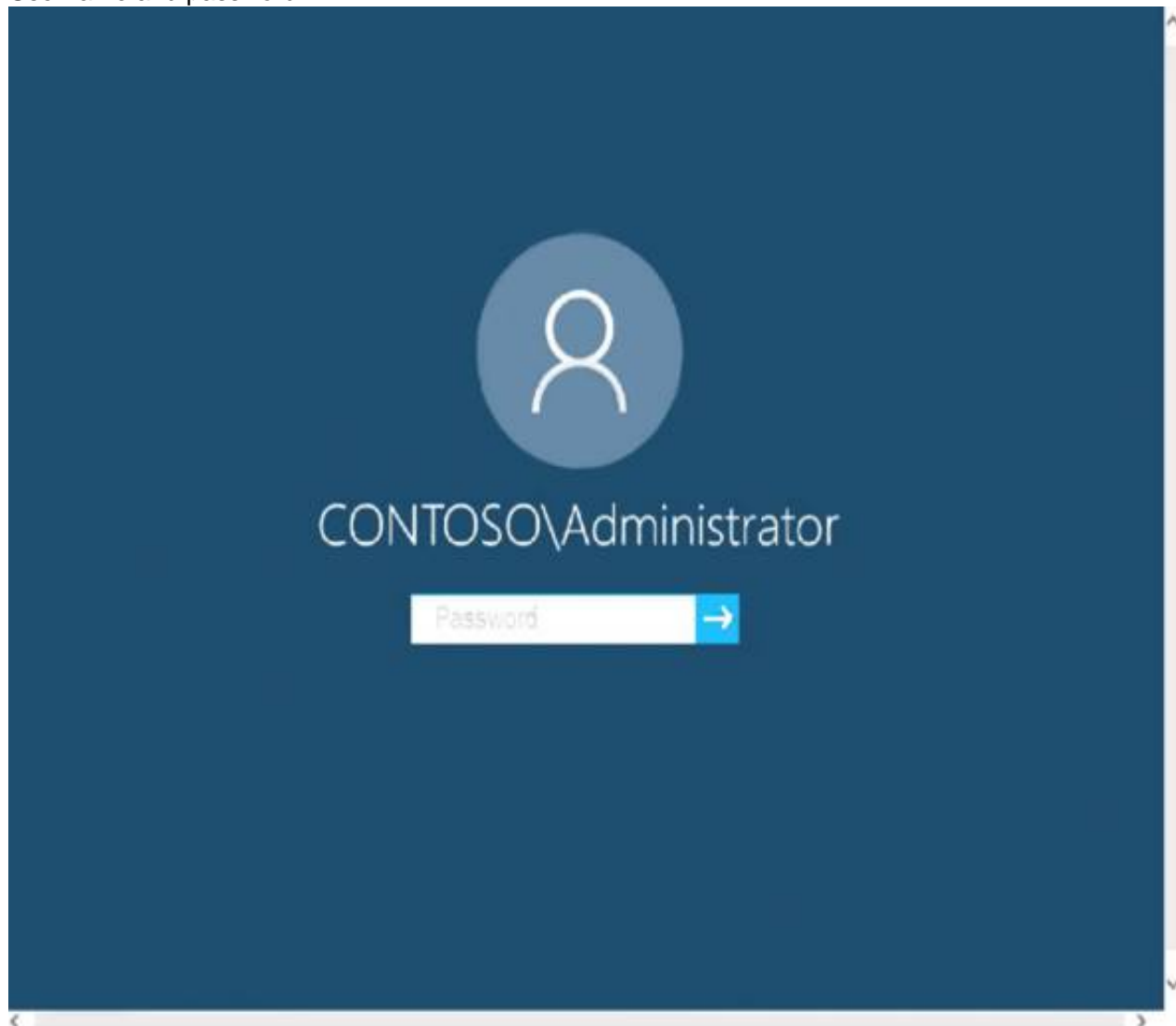
Scoring is based on the outcome of performing the tasks stated in the lab. In other words, it doesn't matter how you accomplish the task, if you successfully perform it, you will earn credit for that task.

Labs are not timed separately, and this exam may more than one lab that you must complete. You can use as much time as you would like to complete each lab.

But, you should manage your time appropriately to ensure that you are able to complete the lab(s) and all other sections of the exam in the time provided.

Please note that once you submit your work by clicking the Next button within a lab, you will NOT be able to return to the lab.

Username and password



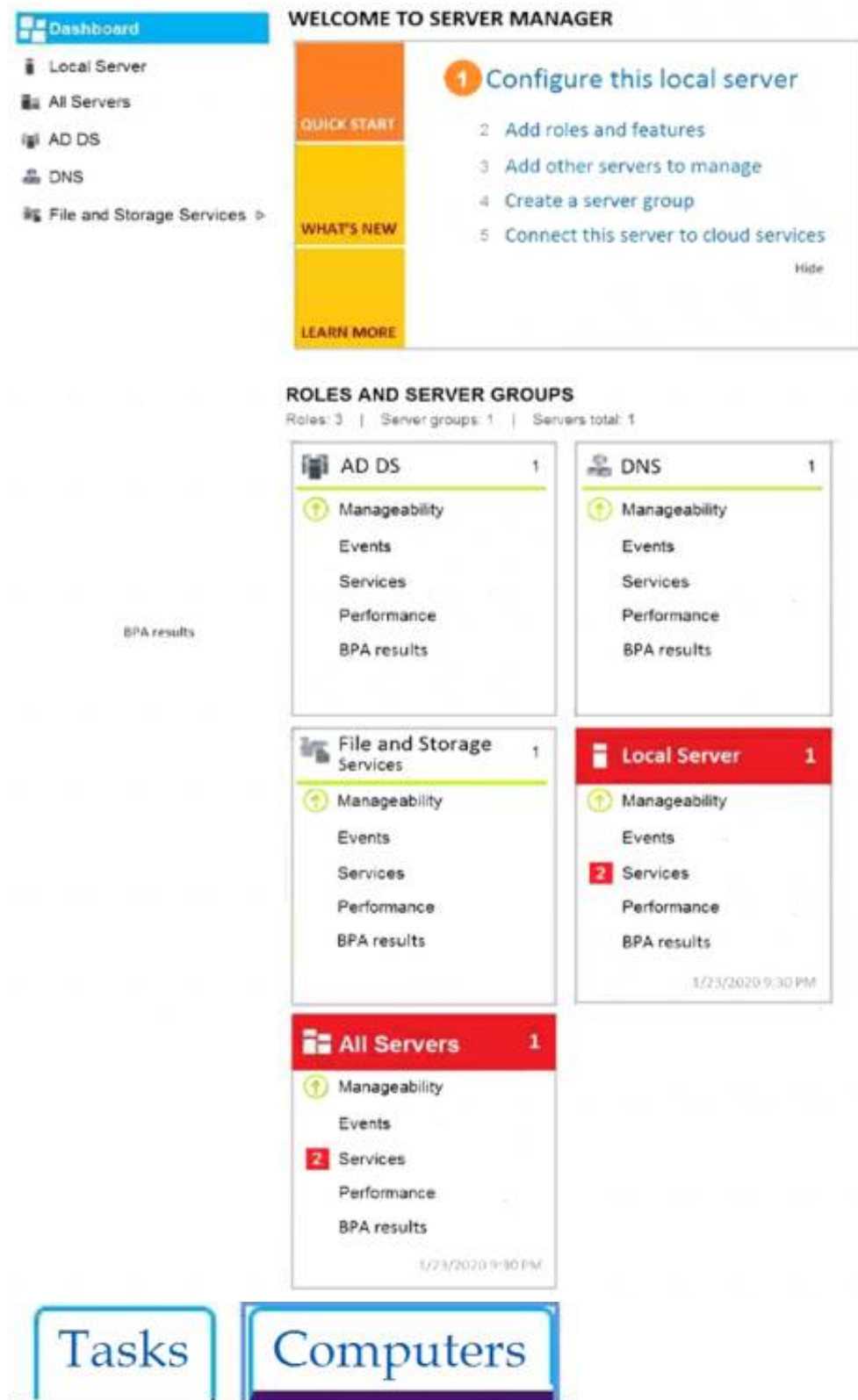
Use the following login credentials as needed:

To enter your password, place your cursor in the Enter password box and click on the password below.

Username: Contoso/Administrator

Password: Passw0rd!

The following information is for technical support purposes only: Lab Instance: 11145882



A web service installed on Client1 is used for testing.
 You discover that users cannot connect to the web service by using HTTP. You need to allow inbound HTTP connections to Client1.
 To complete this task, sign in to the required computer or computers.

- A. Mastered
- B. Not Mastered

Answer: A

Explanation:

To create an inbound port rule

- In the navigation pane, click Inbound Rules.
- Click Action, and then click New rule.
- On the Rule Type page of the New Inbound Rule Wizard, click Custom, and then click Next.
- On the Program page, click All programs, and then click Next.

- On the Protocol and Ports page, select the protocol type that you want to allow. To restrict the rule to a specified port number, you must select either TCP or UDP. Because this is an incoming rule, you typically configure only the local port number. TCP port 80. When you have configured the protocols and ports, click Next.
- On the Scope page, you can specify that the rule applies only to network traffic to or from the IP addresses entered on this page. Configure as appropriate for your design, and then click Next.
- On the Action page, select Allow the connection, and then click Next.
- On the Profile page, select the network location types to which this rule applies, and then click Next.
- On the Name page, type a name and description for your rule, and then click Finish.

Reference:

<https://docs.microsoft.com/en-us/windows/security/threat-protection/windows-firewall/create-an-inbound-port-r>

https://en.wikipedia.org/wiki/List_of_TCP_and_UDP_port_numbers

NEW QUESTION 9

- (Exam Topic 4)

You have a Windows 11 Pro device.

You need to perform a scan in Microsoft Defender to check for rootkits. Which type of scan should you use?

- A. full
- B. offline
- C. custom
- D. quick

Answer: B

NEW QUESTION 10

- (Exam Topic 4)

You have a Microsoft 365 Enterprise E3 license.

You have a computer named Computer1 that runs Windows 10.

You need to ensure that you can access the files on Computer1 by using a web browser on another computer. What should you configure?

- A. Sync your settings in the Settings app
- B. the File Explorer desktop app
- C. the Microsoft OneDrive desktop app
- D. Default apps in the Settings app

Answer: C

NEW QUESTION 10

- (Exam Topic 4)

Note: This question is part of a series of questions that present the same scenario. Each question in the series contains a unique solution that might meet the stated goals. Some question sets might have more than one correct solution, while others might not have a correct solution.

After you answer a question in this section, you will NOT be able to return to it. As a result, these questions will not appear in the review screen.

You manage devices that run Windows 10.

Ten sales users will travel to a location that has limited bandwidth that is expensive. The sales users will be at the location for three weeks.

You need to prevent all Windows updates from downloading for the duration of the trip. The solution must not prevent access to email and the Internet.

Solution: From Network & Internet in the Settings app, you set the network connections as metered connections.

Does this meet the goal?

- A. Yes
- B. No

Answer: B

Explanation:

References:

<https://www.makeuseof.com/tag/5-ways-temporarily-turn-off-windows-update-windows-10/>

NEW QUESTION 11

- (Exam Topic 4)

You have a computer that runs Windows 11 and has Windows Sandbox enabled. You need to create a custom Windows Sandbox configuration file. Which file extension should you use?

- A. .ps
- B. .json
- C. .wsb
- D. .xml

Answer: C

NEW QUESTION 13

- (Exam Topic 4)

You have a computer named Computer1 that runs Windows 10.

You need to prevent standard users from changing the wireless network settings on Computer1. The solution must allow administrators to modify the wireless network settings.

What should you use?

- A. Windows Configuration Designer
- B. MSConfig
- C. Local Group Policy Editor
- D. an MMC console that has the Group Policy Object Editor snap-in

Answer: C

NEW QUESTION 16

- (Exam Topic 4)

You have a Microsoft Azure Active Directory (Azure AD) tenant.

Some users signs in to that computer by using Windows hello for Business. A user User1 purchases a new computer and joins the computer to Azure AD. User1 attempts to configure the sign-in options and receives the error message shown in the exhibit. (Click the Exhibit tab.)

Sign-in options

***Some settings are hidden or managed by your organization.**



Windows Hello

Sign in to Windows, apps and services by teaching Windows to recognize you.

Windows Hello isn't available on this device.

[See how it works and find compatible devices.](#)

You open device Manager and confirmed that all the hardware works correctly.

You need to ensure that user1 can use Windows Hello for Business facial recognition to sign in to the computer.

What should you do first.

- A. Purchase an infrared (IR) camera.
- B. Install a virtual TPM driver.
- C. Enable UEFI Secure Boot.
- D. Upgrade the computer to windows 10 Enterprise.

Answer: D

NEW QUESTION 20

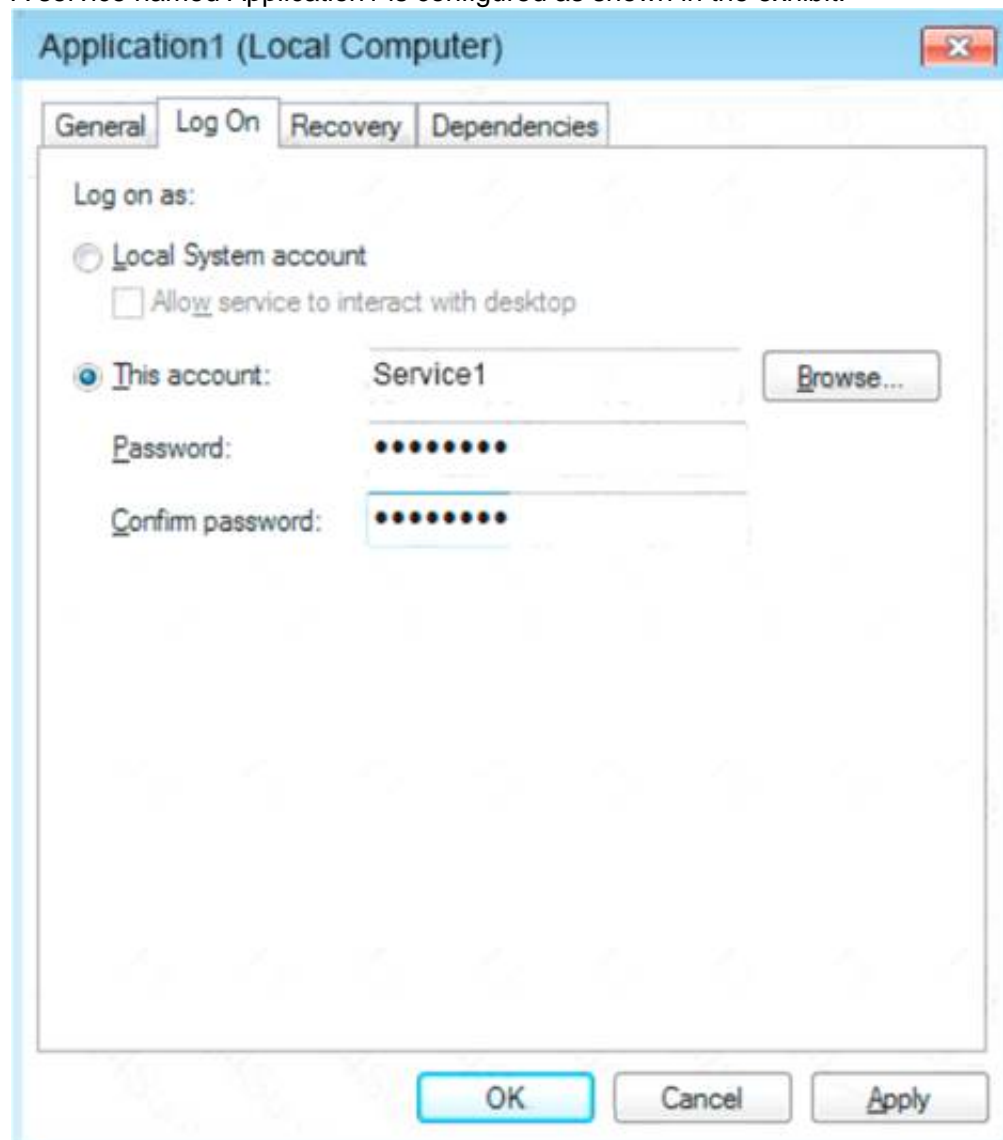
- (Exam Topic 4)

Note: This question is part of a series of questions that present the same scenario. Each question in the series contains a unique solution that might meet the stated goals. Some question sets might have more than one correct solution, while others might not have a correct solution.

After you answer a question in this section, you will NOT be able to return to it. As a result, these questions will not appear in the review screen.

You have a computer named Computer1 that runs Windows 10.

A service named Application1 is configured as shown in the exhibit.



You discover that a user used the Service1 account to sign in to Computer1 and deleted some files. You need to ensure that the identity used by Application1 cannot be used by a user to sign in to the desktop on Computer1. The solution must use the principle of least privilege. Solution: On Computer1, you assign Service1 the deny log on as a service user right. Does this meet the goal?

- A. Yes
- B. No

Answer: B

Explanation:

References:

<https://docs.microsoft.com/en-us/windows/security/threat-protection/security-policy-settings/deny-log-on-as-a-s>

NEW QUESTION 23

- (Exam Topic 4)

You have a computer named Computer1 that runs Windows 10. Computer1 has an IP address of 10.10.1.200 and a subnet mask of 255.255.255.0. You configure the proxy settings on Computer1 as shown in the following exhibit.

Manual proxy setup

Use a proxy server for Ethernet or Wi-Fi connections. These settings don't apply to VPN connections.

Use a proxy server

☒ On

Address

Port

Use the proxy server except for addresses that start with the following entries. Use semicolons (;) to separate entries.

☒ Don't use the proxy server for local (intranet) addresses

Save

Use the drop-down menus to select the answer choice that completes each statement based on the information presented in the graphic. NOTE: Each correct selection is worth one point.

Connection attempts to

www.contoso.com will [answer choice].

bypass the proxy only when using Microsoft Edge
 use the proxy only when using Microsoft Edge
 bypass the proxy for all applications
 use the proxy for all applications

If Computer1 attempts to connect to

[answer choice] from Microsoft Edge, the proxy will be bypassed.

https://10.10.0.100
 https://store.microsoft.com
 ftp://192.168.1.10

- A. Mastered
- B. Not Mastered

Answer: A

Explanation:

References:

<https://www.howtogeek.com/tips/how-to-set-your-proxy-settings-in-windows-8.1/>

NEW QUESTION 24

- (Exam Topic 4)

You have a computer that runs Windows 10.

You need to be able to recover the computer by using System Image Recovery.
What should you use to create a system image?

- A. Windows System Image Manager (Windows SIM)
- B. Backup and Restore (Windows 7)
- C. File History
- D. System Protection

Answer: B

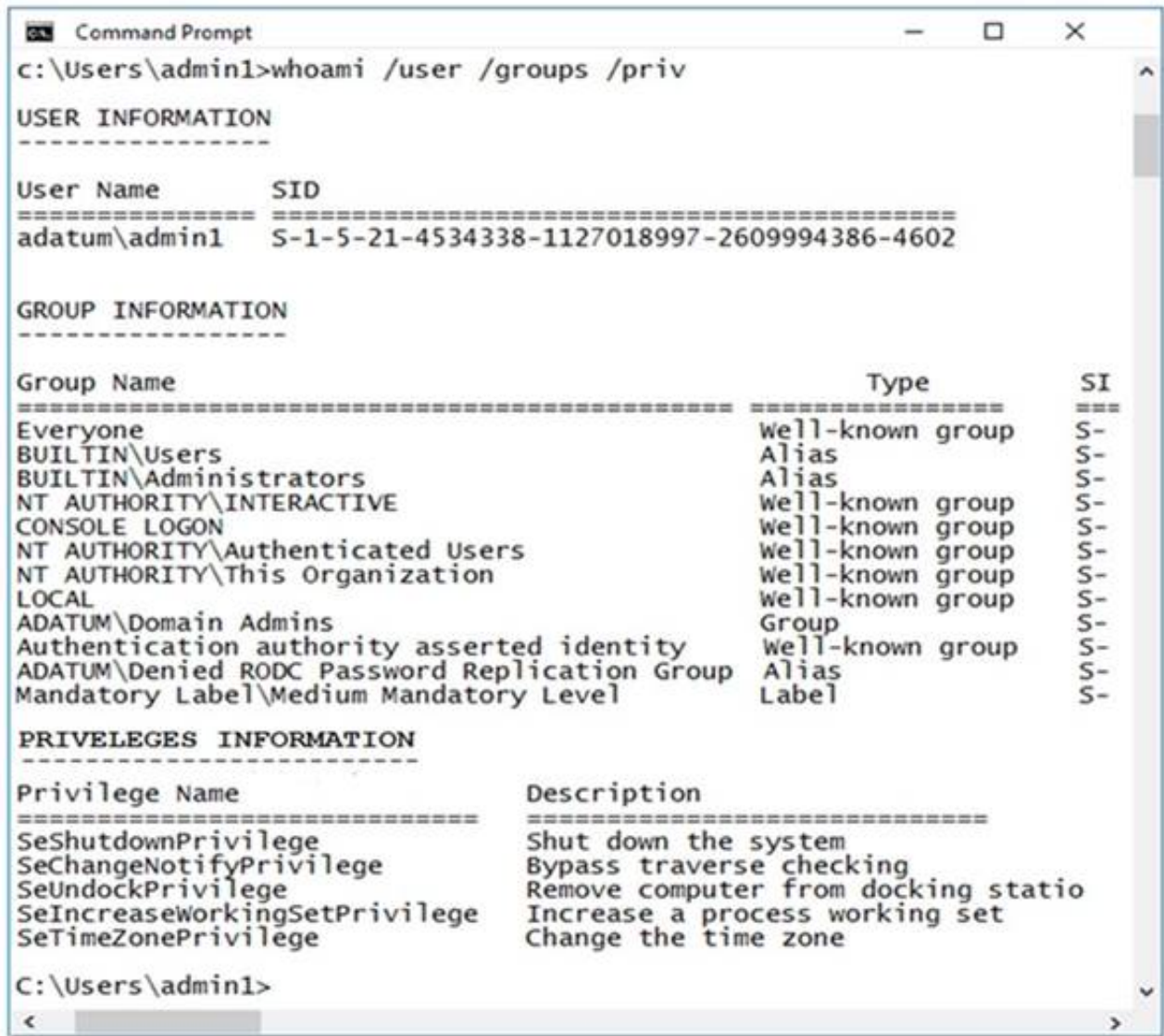
Explanation:

Reference:
https://answers.microsoft.com/en-us/windows/forum/windows_10/how-to-create-a-system-image-in-windows-1

NEW QUESTION 28

- (Exam Topic 4)

You have a computer named Computer1 that runs Windows 10 and is joined to an Active Directory domain named adatum.com.
A user named Admin1 signs in to Computer1 and runs the whoami command as shown in the following exhibit.



Use the drop-down menus to select the answer choice that completes each statement based on the information presented in the graphic.
NOTE: Each correct selection is worth one point.

Answer Area

On Computer1, if Admin1 attempts to open Device Manager, [answer choice].

▼

Admin1 will be prompted for credentials

Admin1 will be prompted for consent

Admin1 will be denied access

Device Manager will open without a prompt

On Computer1, if Admin1 attempts to run the command prompt as an administrator, [answer choice].

▼

Admin1 will be prompted for credentials

Admin1 will be prompted for consent

Admin1 will be denied access

the command prompt will open without a prompt

- A. Mastered
- B. Not Mastered

Answer: A

Explanation:

On Computer1, if Admin attempts to open Device Manager, [answer choice].

▼

Admin1 will be prompted for credentials

Admin1 will be prompted for consent

Admin1 will be denied access

Device Manager will open without a prompt

On Computer1, if Admin attempts to run the command prompt as an administrator, [answer choice].

▼

Admin1 will be prompted for credentials

Admin1 will be prompted for consent

Admin1 will be denied access

Device Manager will open without a prompt

NEW QUESTION 33

- (Exam Topic 4)

Note: This question is part of a series of questions that present the same scenario. Each question in the series contains a unique solution that might meet the stated goals. Some question sets might have more than one correct solution, while others might not have a correct solution.

After you answer a question in this section, you will NOT be able to return to it. As a result, these questions will not appear in the review screen.

Your network contains an Active Directory domain named contoso.com. The domain contains the users shown in the following table.

Name	Member of
User2	Domain Users
User3	Domain Admins
User4	Server Operators

You have a computer named Computer1 that runs Windows 10 and is in a workgroup.

A local standard user on Computer1 named User1 joins the computer to the domain and uses the credentials of User2 when prompted.

You need to ensure that you can rename Computer1 as Computer33. Solution: You use the credentials of User3 on Computer1.

Does this meet the goal?

- A. Yes
- B. No

Answer: A

Explanation:

Renaming a domain-joined computer will also rename the computer account in the domain. To do this, you need domain administrator privileges.

User3 is a domain administrator. References:

<https://docs.microsoft.com/en-us/windows/security/identity-protection/access-control/active-directory-security-g>

NEW QUESTION 35

- (Exam Topic 4)

You plan to install Windows 10 Pro by using an answer file. You open Windows System Image Manager.

You need to create an answer file. What should you do first?

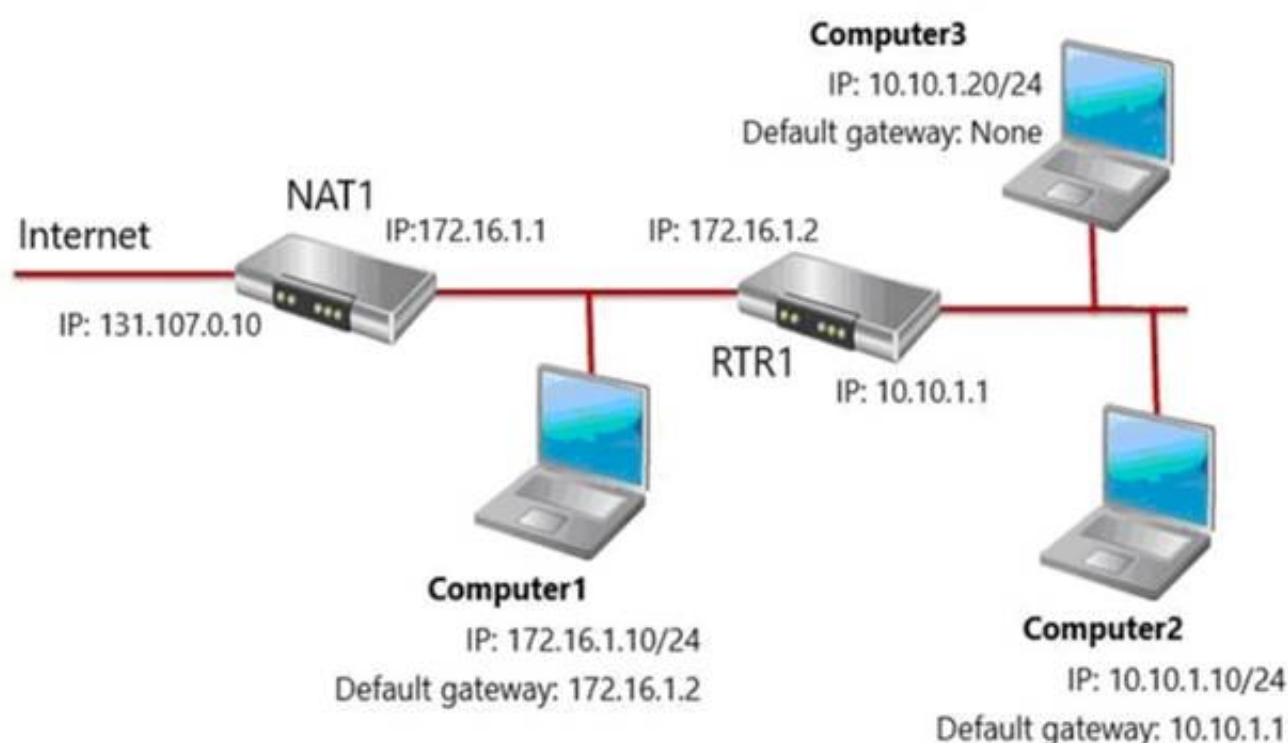
- A. Open the Install.wim file from the Windows 10 installation media.
- B. Open the Boot.wim file from the Windows 10 installation media.
- C. Install the WinPE add-on for the Windows Assessment and Deployment Kit (Windows ADK).
- D. Install the Windows Assessment and Deployment Kit (Windows ADK).

Answer: C

NEW QUESTION 38

- (Exam Topic 4)

You have the network shown in the following exhibit.



Computer1, Computer2, and Computer3 run Windows 10. Windows Defender Firewall is configured to allow ICMP traffic. RTR1 is a router. For each of the following statements, select Yes if the statement is true. Otherwise, select No. NOTE: Each correct selection is worth one point.

Answer Area

Statements	Yes	No
If Computer1 pings the IP address of Computer2, Computer1 will receive a reply.	<input type="radio"/>	<input type="radio"/>
If Computer1 pings the IP address of Computer3, Computer1 will receive a reply.	<input type="radio"/>	<input type="radio"/>
If Computer2 pings the IP address of Computer3, Computer2 will receive a reply.	<input type="radio"/>	<input type="radio"/>

- A. Mastered
- B. Not Mastered

Answer: A

Explanation:
Answer Area

Statements	Yes	No
If Computer1 pings the IP address of Computer2, Computer1 will receive a reply.	<input checked="" type="radio"/>	<input type="radio"/>
If Computer1 pings the IP address of Computer3, Computer1 will receive a reply.	<input checked="" type="radio"/>	<input type="radio"/>
If Computer2 pings the IP address of Computer3, Computer2 will receive a reply.	<input type="radio"/>	<input checked="" type="radio"/>

NEW QUESTION 41

- (Exam Topic 4)

You have a computer named Computer1 that runs Windows 10. Computer1 is in a workgroup. Computer1 contains the local users shown in the following table.

Name	Member of
Administrator	Administrators, Users
User1	Users
User2	Users

Computer1 contains the folders shown in the following table.

Name	Path
Folder1	D:\Folder1
Folder2	D:\Folder2
Folder3	E:\Folder3

The Users group has Full control permissions to Folder1, Folder2, and Folder3. User1 encrypts two files named File1.docx and File2.docx in Folder1 by using EFS.

Which users can move each file? To answer, select the appropriate options in the answer area.

NOTE: Each correct selection is worth one point.

Answer Area

Users who can move File1.docx to Folder2:

▼

User1 only

User1 and Administrator only

User1, User2, and Administrator

Users who can move File2.docx to Folder3:

▼

User1 only

User1 and Administrator only

User1, User2, and Administrator

- A. Mastered
 B. Not Mastered

Answer: A

Explanation:

EFS works by encrypting a file with a bulk symmetric key. The symmetric key that is used to encrypt the file is then encrypted with a public key that is associated with the user who encrypted the file. Because the encryption & decryption operations are performed at a layer below NTFS, it is transparent to the user and all their applications.

Box 1: User1, User2, and Administrator Box 2: User1, User2, and Administrator

All three are members of the Users group that has Full control permissions to Folder1, Folder2, and Folder3.

NEW QUESTION 42

- (Exam Topic 4)

You have computers that run Windows 11 as shown in the following table.

Name	IP address	Joined to
Computer1	192.168.10.10	Active Directory
Computer2	192.168.10.15	Workgroup

You ping 192.168.10.15 from Computer1 and discover that the request timed out. You need to ensure that you can successfully ping 192.168.10.15 from Computer 1.

Solution: On Computer2, you allow incoming ICMFV6 traffic in Windows Defender Firewall. Does this meet the goal?

- A. Yes
 B. No

Answer: A

NEW QUESTION 43

- (Exam Topic 4)

You have 100 computers that run Windows 10. You have no servers. All the computers are joined to Microsoft Azure Active Directory (Azure AD).

The computers have different update settings, and some computers are configured for manual updates. You need to configure Windows Update. The solution must meet the following requirements:

- The configuration must be managed from a central location.
- Internet traffic must be minimized.
- Costs must be minimized.

How should you configure Windows Update? To answer, select the appropriate options in the answer area. NOTE: Each correct selection is worth one point.

Windows Update technology to use:

▼

Windows Server Update Services (WSUS)

Microsoft System Center Configuration Manager

Windows Update for Business

Manage the configuration by using:

▼

A Group Policy object (GPO)

Microsoft System Center Configuration Manager

Microsoft Intune

Manage the traffic by using:

▼

Delivery Optimization

BranchCache

Peer cache

- A. Mastered
 B. Not Mastered

Answer: A

Explanation:

References:

<https://docs.microsoft.com/en-us/windows/deployment/update/waas-optimize-windows-10-updates> <https://docs.microsoft.com/en-us/windows/deployment/update/waas-delivery-optimization>

NEW QUESTION 47

- (Exam Topic 4)

You are troubleshooting an issue that prevents you from installing Windows 10 updates. You discover that the issue relates to corrupt protected system files. You need to restore the corrupt system files. Which command should you run?

- A. scanstate
- B. sfc
- C. chkdsk
- D. chknfs

Answer: B

Explanation:

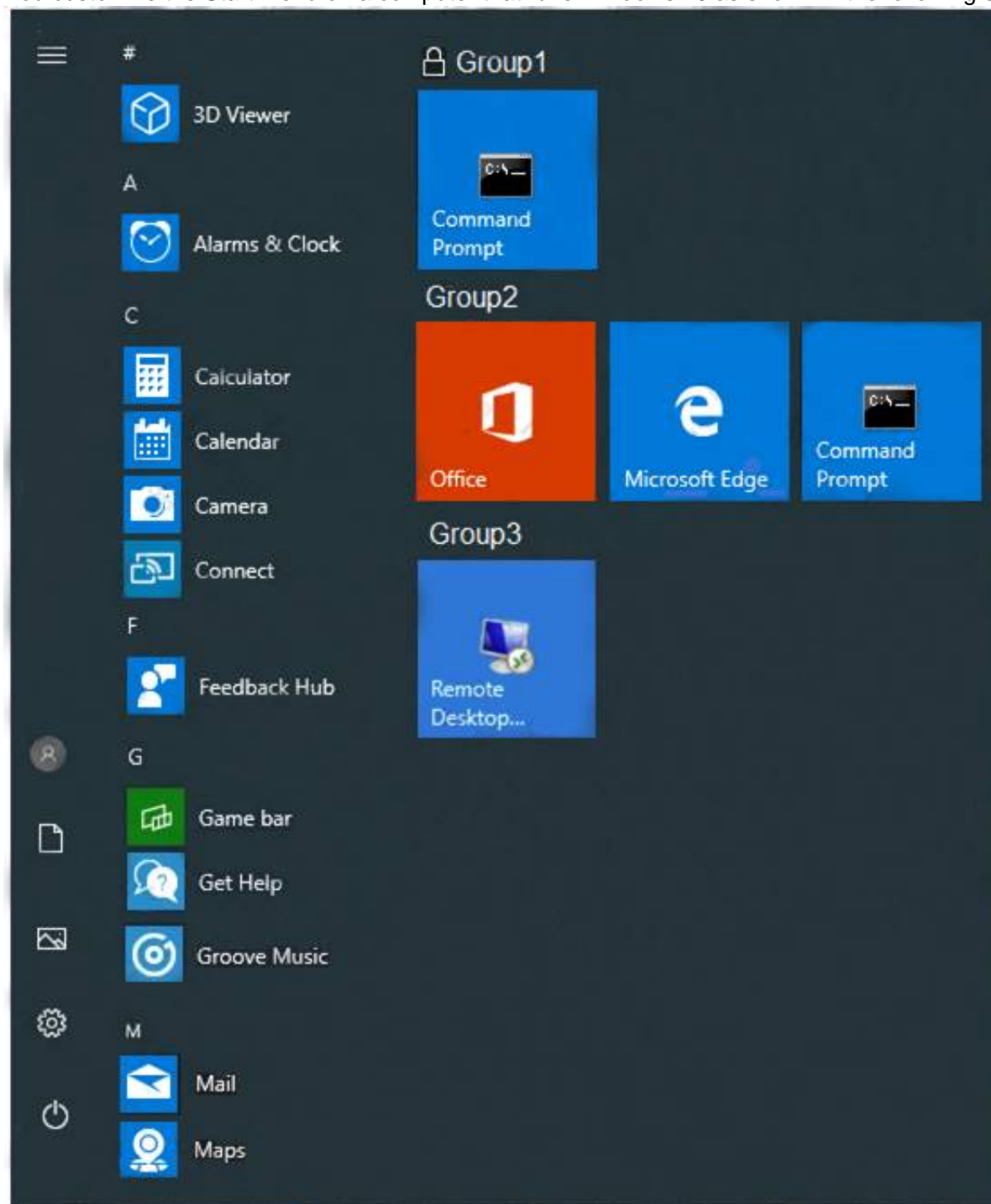
References:

<https://support.microsoft.com/en-us/topic/use-the-system-file-checker-tool-to-repair-missing-or-corrupted-syste>

NEW QUESTION 52

- (Exam Topic 4)

You customize the Start menu on a computer that runs Windows 10 as shown in the following exhibit.



You need to add Remote Desktop Connection to Group1 and remove Group3 from the Start menu. Which two actions should you perform from the Start menu customizations? Each correct answer presents part of the solution. NOTE: Each correct selection is worth one point.

- A. Unlock Group!
- B. Remove Command Prompt from Group1.
- C. Delete Group3.
- D. Add Remote Desktop Connection to Group1.
- E. Rename Group3 as Group1.

Answer: AD

NEW QUESTION 53

- (Exam Topic 4)

Note: This question is part of a series of questions that present the same scenario. Each question in the series contains a unique solution that might meet the stated goals. Some question sets might have more than one correct solution, while others might not have a correct solution.

After you answer a question in this section, you will NOT be able to return to it. As a result, these questions will not appear in the review screen.

You have two computers named Computer1 and Computer2 that run Windows 10.

You have an Azure Active Directory (Azure AD) user account named admin@contoso.com that is in the local Administrators group on each computer.

You sign in to Computer1 by using admin@contoso.com.

You need to ensure that you can use Event Viewer on Computer1 to connect to the event logs on Computer2. Solution: On Computer2, you run the Enable-PSRemoting cmdlet.

Does this meet the goal?

A. Yes

B. No

Answer: A

Explanation:

The Enable-PSRemoting cmdlet configures the computer to receive PowerShell remote commands that are sent by using the WS-Management technology.

References:

<https://docs.microsoft.com/en-us/powershell/module/microsoft.powershell.core/enable-psremoting?view=powershell-7>

NEW QUESTION 56

- (Exam Topic 4)

You have a computer named Computer1 that runs Windows 10.

On Computer1, you create a VPN connection as shown in the following exhibit.

```

PS C:\> Get-VpnConnection VPN1

Name                : VPN1
ServerAddress       : vpn.contoso.com
AllUserConnection   : False
Guid                : {101AC5F1 - 6269 - 4745 - A3C4 - 48825E3FD83}
TunnelType          : Automatic
AuthenticationMethod : {MsChapv2}
EncryptionLevel     : Optional
L2tpIPsecAuth       : Certificate
UseWinlogonCredential : False
EapConfigXmlStream  :
ConnectionStatus    : Disconnected
RememberCredential  : True
SplitTunneling      : True
DnsSuffix            :
IdleDisconnectSeconds : 0

PS C:\>

```

The corporate network contains a single IP subnet.

Use the drop-down menus to select the answer choice that completes each statement based on the information presented in the graphic.

NOTE: Each correct selection is worth one point.

VPN1 can use protocols [answer choice] to establish a VPN connection.

▼

PPTP and L2TP only

L2TP and SSTP only

L2TP, SSTP, and IKEv2 only

PPTP, L2TP, SSTP, and IKEv2

[Answer choice] will be routed through the VPN connection.

▼

Only traffic for the internet

Only traffic for the corporate network

Traffic the Internet and the corporate network

A. Mastered

B. Not Mastered

Answer: A

Explanation:

VPN1 can use protocols [answer choice] to establish a VPN connection.

PPTP and L2TP only
L2TP and SSTP only
L2TP, SSTP, and IKEv2 only
PPTP, L2TP, SSTP, and IKEv2

[Answer choice] will be routed through the VPN connection.

Only traffic for the internet
Only traffic for the corporate network
Traffic the Internet and the corporate network

NEW QUESTION 57

- (Exam Topic 4)

You are troubleshooting Windows 10 updates that fail to install on a computer that runs Windows 10. You delete the contents of the SoftwareDistribution folder. You need to delete the signatures of the Windows Update packages. Which folder should you delete?

- A. %systemroot%\system32\catroot2
- B. %systemdrive%\recovery
- C. %systemroot%\WinSxS
- D. %systemdrive%\System Volume Information

Answer: A

Explanation:

References:

<https://tipsmake.com/how-to-delete-pending-updates-on-windows-10>

NEW QUESTION 59

- (Exam Topic 4)

Please wait while the virtual machine loads. Once loaded, you may proceed to the lab section. This may take a few minutes, and the wait time will not be deducted from your overall test time.

When the Next button is available, click it to access the lab section. In this section, you will perform a set of tasks in a live environment. While most functionality will be available to you as it would be in a live environment, some functionality (e.g., copy and paste, ability to navigate to external websites) will not be possible by design.

Scoring is based on the outcome of performing the tasks stated in the lab. In other words, it doesn't matter how you accomplish the task, if you successfully perform it, you will earn credit for that task.

Labs are not timed separately, and this exam may more than one lab that you must complete. You can use as much time as you would like to complete each lab.

But, you should manage your time appropriately to ensure that you are able to complete the lab(s) and all other sections of the exam in the time provided.

Please note that once you submit your work by clicking the Next button within a lab, you will NOT be able to return to the lab.

Username and password



Use the following login credentials as needed:

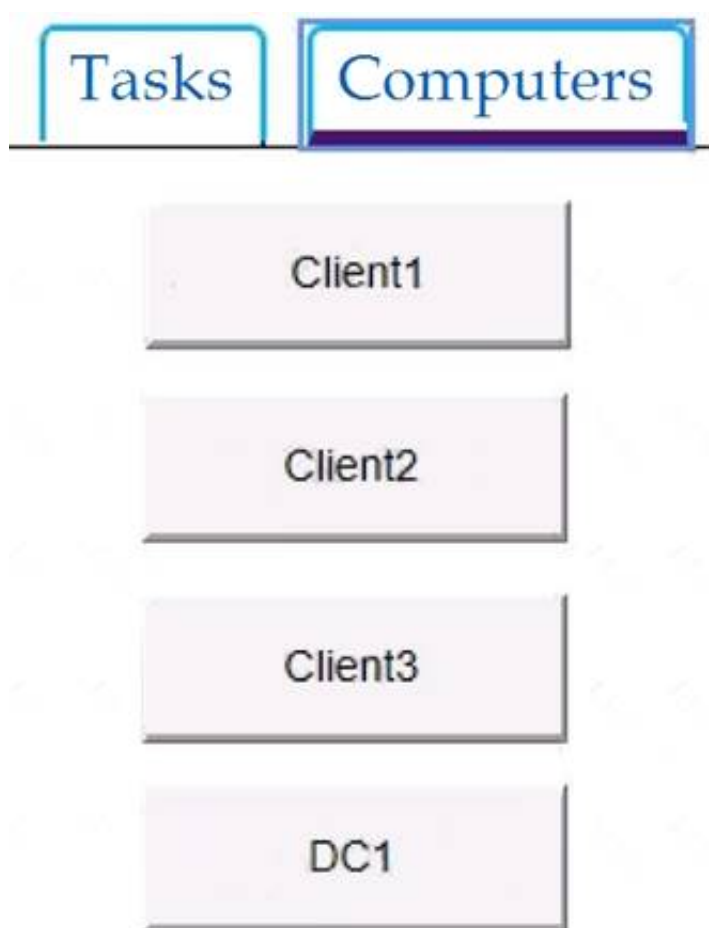
To enter your password, place your cursor in the Enter password box and click on the password below.

Username: Contoso/Administrator

Password: Passw0rd!

The following information is for technical support purposes only:

Lab Instance: 10921597



You need to create a file named File1.txt in a folder named Folder1 on the C drive of Client2. You need to ensure that a user named User1 can read the contents of File1.txt. The solution must prevent User1 from modifying the file. To complete this task, sign in to Client2 and perform the required action.

- A. Mastered
- B. Not Mastered

Answer: A

Explanation:

- After creating File1.txt in Folder1, right-click the file and select Properties.
- Access the Security tab, click Disable inheritance
- Click on Remove all inherited permissions from this object, click Apply, and select Yes in the dialog box that appears.
- Click OK
- Back on the Security tab select Edit to change permissions.
- Click Add, then enter User1 in the Enter the object names to select section.
- Click Check Names, and then click OK.
- Check only the Read box in the Allow column.
- Click apply, Ok, and OK

NEW QUESTION 61

- (Exam Topic 4)

Your network contains an Active Directory domain named contoso.com. The domain contains a computer named Computer1 that runs Windows 10. Several user settings are configured in a Default Domain Policy Group Policy Object (GPO). Users sign in to Computer1 as shown in the following table.

Name	Created in/on	Member of
User1	Contoso.com	Domain Users
User2	Computer1	Administrators

You configure the following GPOs on Computer1:

- Local Computer
- Local Computer\User2
- Local Computer\Administrators
- Local Computer\Non-Administrators Each GPO has different user settings configured.

For each of the following statements, select Yes if the statement is true. Otherwise, select No.

Statements	Yes	No
The Local Computer GPO applies to User1.	<input type="radio"/>	<input type="radio"/>
The Local Computer\Administrators GPO applies to User2.	<input type="radio"/>	<input type="radio"/>
The Default Domain Policy GPO applies to User2.	<input type="radio"/>	<input type="radio"/>

- A. Mastered
B. Not Mastered

Answer: A

Explanation:

Statements	Yes	No
The Local Computer GPO applies to User1.	<input type="radio"/>	<input checked="" type="radio"/>
The Local Computer\Administrators GPO applies to User2.	<input checked="" type="radio"/>	<input type="radio"/>
The Default Domain Policy GPO applies to User2.	<input type="radio"/>	<input checked="" type="radio"/>

NEW QUESTION 63

- (Exam Topic 4)

Note: This question is part of a series of questions that present the same scenario. Each question in the series contains a unique solution that might meet the stated goals. Some question sets might have more than one correct solution, while others might not have a correct solution.

After you answer a question in this section, you will NOT be able to return to it. As a result, these questions will not appear in the review screen.

Your network contains an Active Directory domain named contoso.com. The domain contains the users shown in the following table.

Name	Member of
User2	Domain Users
User3	Domain Admins
User4	Server Operators

You have a computer named Computer1 that runs Windows 10 and is in a workgroup.

A local standard user on Computer1 named User1 joins the computer to the domain and uses the credentials of User2 when prompted.

You need to ensure that you can rename Computer1 as Computer33. Solution: You use the credentials of User1 on Computer1.

Does this meet the goal?

- A. Yes
B. No

Answer: B

Explanation:

Renaming a domain-joined computer will also rename the computer account in the domain. To do this, you need domain administrator privileges.

User1 is a standard user. References:

<https://docs.microsoft.com/en-us/windows/security/identity-protection/access-control/active-directory-security-g>

NEW QUESTION 67

- (Exam Topic 4)

You deploy Windows 10 to several computers. The computers will be used by users who frequently present their desktop to other users.

You need to prevent applications from generating toast notifications in the notification area. Which settings should you configure from the Settings app?

- A. Shared experiences
B. Privacy
C. Focus assist
D. Tablet mode

Answer: C

Explanation:

Focus Assist will automatically hide incoming notifications, so they don't pop up and distract you while you're playing a game, giving a presentation, or using a full-

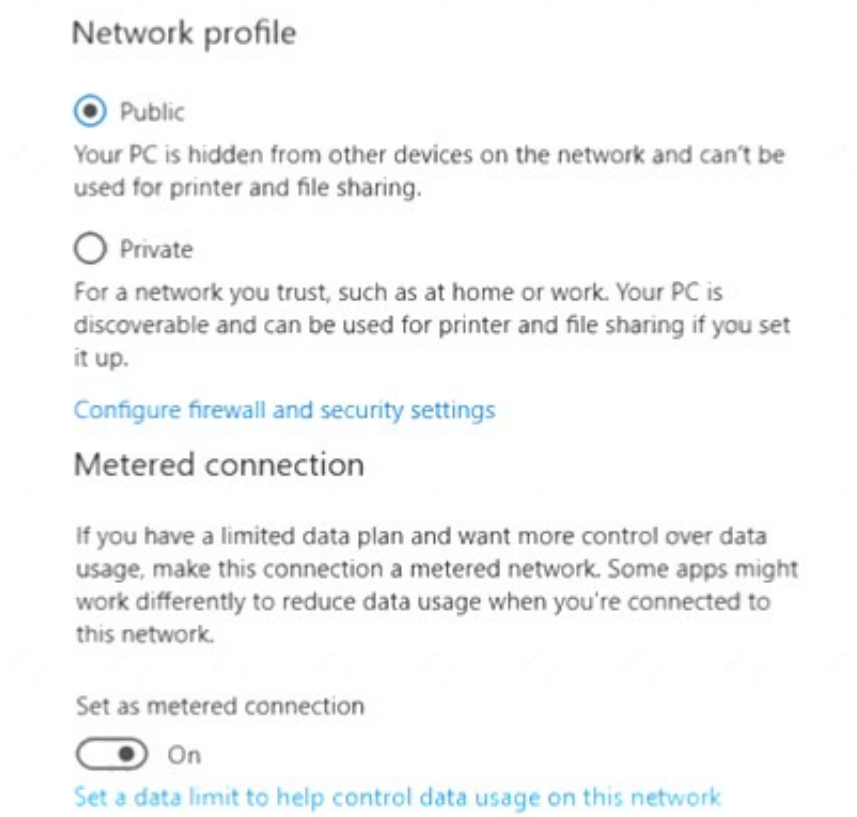
screen application.

NEW QUESTION 71

- (Exam Topic 4)

You have a computer that runs Windows 10.

From the Settings app, you view the connection properties shown in the following exhibit.



Use the drop-down menus to select the answer choice that completes each statement based on the information presented in the graphic.
NOTE: Each correct selection is worth one point.

To enable Windows Remote Management (WinRM), you must first [answer choice].

set the Network profile to Private
run winrm qc at the command prompt
turn off Metered connection

To ensure that Microsoft OneDrive syncs, you must first [answer choice].

set the Network profile to Private
run winrm qc at the command prompt
turn off Metered connection

- A. Mastered
- B. Not Mastered

Answer: A

Explanation:

To enable Windows Remote Management (WinRM), you must first [answer choice].

set the Network profile to Private
run winrm qc at the command prompt
turn off Metered connection

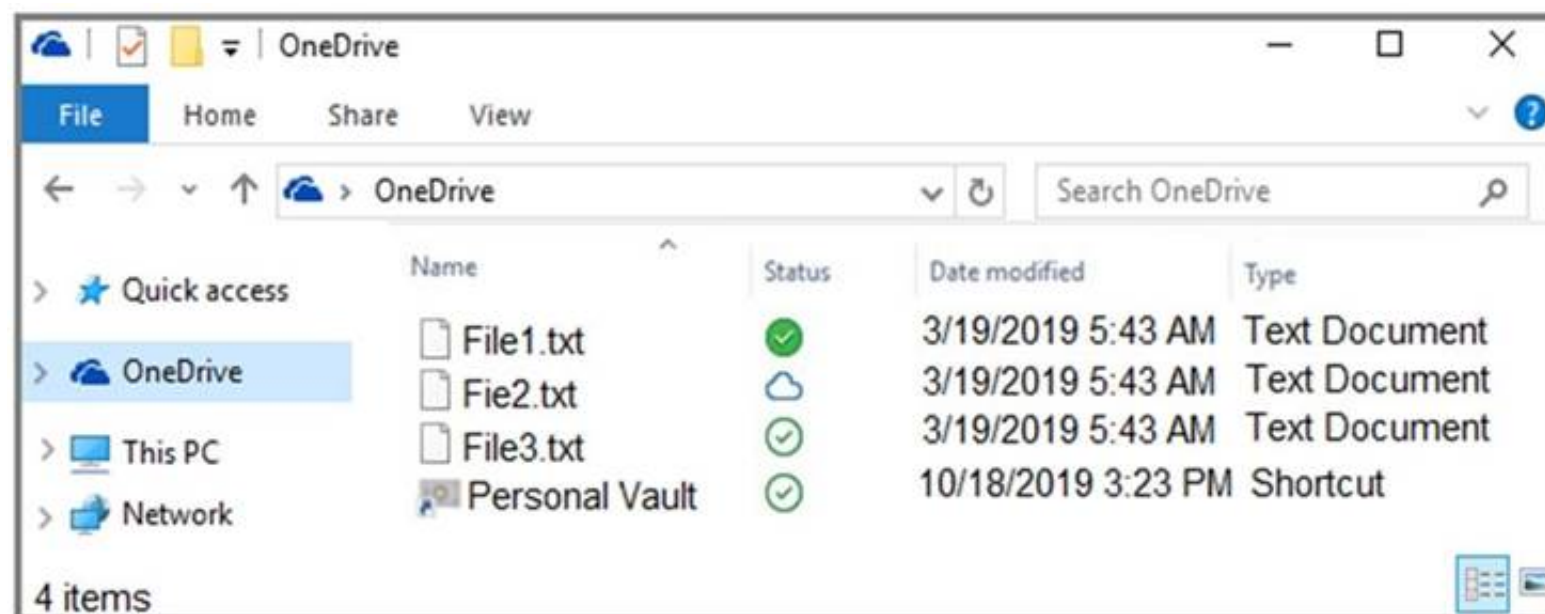
To ensure that Microsoft OneDrive syncs, you must first [answer choice].

set the Network profile to Private
run winrm qc at the command prompt
turn off Metered connection

NEW QUESTION 73

- (Exam Topic 4)

You have a workgroup computer named Computer1 that runs Windows 10. From File Explorer, you open OneDrive as shown in the following exhibit.



Use the drop-down menus to select the answer choice that answers each question based on the information presented on the graphic.
 NOTE: Each correct selection is worth one point.

Answer Area

If Computer1 fails, which files will you be able to recover from Microsoft OneDrive?

▼

File2.txt only

File1.txt and File2.txt only

File2.txt and File3.txt only

File1.txt, File2.txt, and File3.txt

If the network adapter on Computer1 fails, which files will you be able to access on Computer1?

▼

File1.txt only

File1.txt and File2.txt only

File1.txt and File3.txt only

File1.txt, File2.txt, and File3.txt

- A. Mastered
 B. Not Mastered

Answer: A

Explanation:

If Computer1 fails, which files will you be able to recover from Microsoft OneDrive?

▼

File2.txt only

File1.txt and File2.txt only

File2.txt and File3.txt only

File1.txt, File2.txt, and File3.txt

If the network adapter on Computer1 fails, which files will you be able to access on Computer1?

▼

File1.txt only

File1.txt and File2.txt only

File1.txt and File3.txt only

File1.txt, File2.txt, and File3.txt

NEW QUESTION 77

- (Exam Topic 4)

You have 10 computers that run Windows 10 and have BitLocker Drive Encryption (BitLocker) enabled. You plan to update the firmware of the computers. You need to ensure that you are not prompted for the BitLocker recovery key on the next restart. The drive must be protected by BitLocker on subsequent restarts. Which cmdlet should you run?

- A. Unlock-BitLocker
 B. Disable-BitLocker
 C. Add-BitLockerKeyProtector
 D. Suspend-BitLocker

Answer: D

Explanation:

References:

<https://support.microsoft.com/en-us/help/4057282/bitlocker-recovery-key-prompt-after-surface-uefi-tpm-firmwa>

NEW QUESTION 80

- (Exam Topic 4)

Your network contains an Active Directory domain named contoso.com. The domain contains a server named Server1 that runs Windows Server 2016 and a

computer named Computer1 that runs Windows 10.

Server1 contains a share named Backup. All users can read and write data in Backup.

On Monday at 13:00, you configure Backup and Restore (Windows 7) on Computer1 to use the following settings:

- > Backup Destination: \\Server1\Backup
- > What do you want to back up?: Local Disk (D:), Include a system image of drives: System Reserved, (C:)
- > Schedule: Daily at 23:00

You need to identify how many backups will be available on Thursday at 17:00.

What should you identify? To answer, select the appropriate options in the answer area. NOTE: Each correct selection is worth one point.

Local Disk (D:) backups:

▼

One backup that uses ZIP files

One backup that uses a VHDX file

Three backups that use ZIP files

Three backups that use VHDX files

System image backups of drive C:

▼

One backup that uses ZIP files

One backup that uses a VHDX file

Three backups that use ZIP files

Three backups that use VHDX files

- A. Mastered
- B. Not Mastered

Answer: A

Explanation:

References:

https://www.windowscentral.com/how-make-full-backup-windows-10#create_system_image_windows10<https://www.2passeasy.com/dumps/MD-100/>

NEW QUESTION 85

- (Exam Topic 4)

You have a computer that runs Windows 10 and contains the folders shown in the following table.

Name	Path
FolderA	C:\FolderA
FolderB	C:\FolderA\FolderB
FolderC	C:\FolderA\FolderB\FolderC

You create the groups shown in the following table.

Name	Members
Group1	User1, User2
Group2	User2, User3
Group3	User1, User3

On FolderA, you remove permission inheritance. To each folder, you assign the NTFS permissions shown in the following table.

Folder	Permission
FolderA	Modify to Group1 Read to Group2
FolderB	Write to Group2
FolderC	Read to Group3

For each of the following statements, select Yes if the statement is true. Otherwise, select No.

NOTE: Each correct selection is worth one point.

Statements

Yes

No

User1 can read and write all files in FolderC.

☐
☐

User2 can delete all files in FolderB.

☐
☐

User3 can delete all files in FolderC.

☐
☐

- A. Mastered
- B. Not Mastered

Answer: A

Explanation:

YES YES NO

NEW QUESTION 87

- (Exam Topic 4)

You have a computer named Client1 that runs Windows 11. Client1 hosts a Hyper-V virtual machine named VM1 that runs Windows 11 Pro. VM1 is in the running state.

You need to enable Windows Sandbox on VM1.

Which five actions should you perform in sequence? To answer, move the appropriate actions from the list of actions to the answer area and arrange them in the correct order.

Actions

From VM1, run the Enable-windowsOptionalFeature cmdlet.

Stop VM1.

From Client1, run the Set-VMProcessor cmdlet.

From Client1, run the Enable-windowsOptionalFeature cmdlet.

Sign in to VM1.

Start VM1.

Answer Area

>

<

^

v

- A. Mastered
- B. Not Mastered

Answer: A

Explanation:

Actions

From VM1, run the Enable-windowsOptionalFeature cmdlet.

Stop VM1.

From Client1, run the Set-VMProcessor cmdlet.

From Client1, run the Enable-windowsOptionalFeature cmdlet.

Sign in to VM1.

Start VM1.

Answer Area

Stop VM1.

From Client1, run the Set-VMProcessor cmdlet.

From Client1, run the Enable-windowsOptionalFeature cmdlet.

Sign in to VM1.

Start VM1.

>

<

^

v

NEW QUESTION 91

- (Exam Topic 4)

You are a network administrator at your company.

A user attempts to start a computer and receives the following error message: "Bootmgr is missing." You need to resolve the issue.

You start the computer in recovery mode.

Which command should you run next? To answer, select the appropriate options in the answer area.

NOTE: Each correct selection is worth one point.

Bootrec

Diskpart

Sfc

/FixMbr

/RebuildBcd

/ScanNow

/offbootdir

- A. Mastered
- B. Not Mastered

Answer: A

Explanation:

References: https://neosmart.net/wiki/bootrec/#Bootrec_in_Windows10

NEW QUESTION 93

- (Exam Topic 4)

You are a network administrator at your company.

The company uses an application that checks for network connectivity to a server by sending a ping request to the IPv6 address of the server replies, the

application loads.
A user cannot open the application.
You manually send the ping request from the computer of the user and the server does not reply. You send the ping request from your computer and the server replies.
You need to ensure that the ping request works from the user’s computer. Which Windows Defender firewall rule is a possible cause of the issue?

- A. File and Printer Sharing (NB-Datagram-In)
- B. File and Printer Sharing (Echo request ICMPv6-Out)
- C. File and Printer Sharing (NB-Datagram-Out)
- D. File and Printer Sharing (Echo Request ICMPv6-In)

Answer: B

NEW QUESTION 95

- (Exam Topic 4)
You plan to install Windows 10 by using a Windows Setup answer file. You need to perform the following actions during the installation:
• Add a local account named LocalAdmin to the Administrators group.
• Add the model and manufacturer information.
• Configure the disks and partitions.
Which Windows Setup configuration pass should you configure for each action? To answer, drag the appropriate configuration passes to the correct actions. Each configuration pass may be used once, more than once, or not at all. You may need to drag the split bar between panes or scroll to view content.
NOTE: Each correct selection is worth one point.

Configuration Pass

auditSystem

generalize

oobeSystem

windowsPE

auditUser

offlineServicing

specialize

Answer Area

Add a local account named LocalAdmin to the Administrators group:

Add the model and manufacturer information:

Configure the disks and partitions:

- A. Mastered
- B. Not Mastered

Answer: A

Explanation:

Configuration Pass

auditSystem

generalize

oobeSystem

windowsPE

auditUser

offlineServicing

specialize

Answer Area

Add a local account named LocalAdmin to the Administrators group: oobeSystem

Add the model and manufacturer information: specialize

Configure the disks and partitions: windowsPE

NEW QUESTION 98

- (Exam Topic 4)
You have an Azure Active Directory (Azure AD) tenant named contoso.com. You have a workgroup computer named Computer1 that runs Windows 10. You need to add Computer1 to contoso.com.
What should you use?

- A. Computer Management
- B. dsregcmd.exe
- C. the Settings app
- D. netdom.exe

Answer: C

Explanation:

You join a computer to a domain, including an Azure AD domain in the Settings panel in Windows 10, under System->About
References: <https://aadguide.azurewebsites.net/aadjoin/>

NEW QUESTION 99

- (Exam Topic 4)

You are planning a recovery strategy for computers that run Windows 10.

You need to create recovery procedures to roll back feature updates and quality updates.

What should you include in the procedures? To answer, select the appropriate options in the answer area. NOTE: Each correct selection is worth one point.

To roll back feature updates:

Recovery from the Settings app
Windows Update from the Settings app
Programs and Features from the Control Panel
Troubleshoot from the Settings app

To roll back quality updates:

Recovery from the Settings app
Windows Update from the Settings app
Programs and Features from the Control Panel
Troubleshoot from the Settings app

- A. Mastered
- B. Not Mastered

Answer: A

Explanation:

References:

<https://www.thewindowsclub.com/rollback-uninstall-windows-10-creators-update> <https://www.dummies.com/computers/pcs/undo-windows-update/>

NEW QUESTION 100

- (Exam Topic 4)

You are troubleshooting the failed installation of a VPN application on a device. During the installation, the application displays a Stop error, and you must restart the device. After the restart you discover that the device can no longer connect to the network. What should you use to resolve the issue?

- A. Network reset
- B. Network Adapter troubleshooter
- C. Incoming Connections troubleshooter
- D. Remote Assistance

Answer: B

NEW QUESTION 105

- (Exam Topic 4)

You have several computers that run Windows 10. The computers are in a workgroup and have BitLocker Drive Encryption (BitLocker) enabled.

You join the computers to Microsoft Azure Active Directory (Azure AD).

You need to ensure that you can recover the BitLocker recovery key for the computers from Azure AD. What should you do first?

- A. Disable BitLocker.
- B. Add a BitLocker key protector.
- C. Suspend BitLocker.
- D. Disable the TPM chip.

Answer: B

Explanation:

References:

<https://docs.microsoft.com/en-us/windows/security/information-protection/bitlocker/prepare-your-organization-f>

NEW QUESTION 108

- (Exam Topic 4)

Your network contains an Active Directory domain. The domain contains computers that run Windows 10. You must ensure that Windows BitLocker Drive Encryption is enabled on all client computers, even though a Trusted Platform Module (TPM) chip is installed in only some of them.

You need to accomplish this goal by using one Group Policy object (GPO). What should you do?

- A. Enable the Allow enhanced PINs for startup policy setting, and select the Allow BitLocker without a compatible TPM check box
- B. Enable the Enable use of BitLocker authentication requiring preboot keyboard input on slates policy setting, and select the Allow BitLocker without a compatible TPM check box
- C. Enable the Require additional authentication at startup policy setting, and select the Allow BitLocker without a compatible TPM check box
- D. Enable the Control use of BitLocker on removable drives policy setting, and select the Allow BitLocker without a compatible TPM check box

Answer: C

Explanation:

We need to allow Windows BitLocker Drive Encryption on all client computers (including client computers that do not have Trusted Platform Module (TPM) chip).

We can do this by enabling the option to allow BitLocker without a compatible TPM in the group policy. The "Allow BitLocker without a compatible TPM" option is a checkbox in the "Require additional authentication at startup" group policy setting. To access the "Allow BitLocker without a compatible TPM" checkbox, you need to first select Enabled on the "Require additional authentication at startup" policy setting.

Reference:

<https://docs.microsoft.com/en-us/windows/security/information-protection/bitlocker/bitlocker-group-policy-setti>

NEW QUESTION 109

- (Exam Topic 4)

You have a computer named Client1 that runs Windows 11 Home. You need to ensure that you can create virtual machines on Client1.

Which four actions should you perform in sequence? To answer, move the appropriate actions from the list of actions to the answer area and arrange them in the correct order.

Actions

Answer Area

Restart the operating system

Enter a Windows 11 Pro product key

Enter a Windows 11 Enterprise product key

From Programs and Features, enable the Hyper-V Windows feature

From the Activation settings in the Settings app, select **Change product key**



- A. Mastered
- B. Not Mastered

Answer: A

Explanation:

Graphical user interface, application Description automatically generated

NEW QUESTION 111

- (Exam Topic 4)

You have a workgroup computer named Computer1 that runs Windows 10. Computer1 has the users accounts shown in the following table:

Name	Member of
User1	Administrators
User2	Users, Administrators
User3	Users

Computer1 has the local Group Policy shown in the following table.

Setting	Value
Startup script	ScriptA1
Shutdown script	ScriptA2
Logon script	ScriptA3
Logoff script	ScriptA4

You create the Local Computer\Administrators policy shown in the following table.

Setting	Value
Logon script	ScriptB1
Logoff script	ScriptB2

You create the Local Computer\Non-Administrators policy shown in the following table.

Setting	Value
Logon script	ScriptC1
Logoff script	ScriptC2

For each of the following statements, select Yes if the statement is true. Otherwise, select No.

Statements	Yes	No
If User1 shuts down Computer1, script ScriptA2 will run.	<input type="radio"/>	<input type="radio"/>
If User2 signs in to Computer1, scripts ScriptA3, ScriptB1, and ScriptC1 will run.	<input type="radio"/>	<input type="radio"/>
If User3 signs out of Computer1, scripts ScriptC2 and ScriptA4 will run.	<input type="radio"/>	<input type="radio"/>

- A. Mastered
 B. Not Mastered

Answer: A

Explanation:

Reference:

[https://docs.microsoft.com/en-us/previous-versions/windows/it-pro/windows-vista/cc766291\(v=ws.10\)](https://docs.microsoft.com/en-us/previous-versions/windows/it-pro/windows-vista/cc766291(v=ws.10))

NEW QUESTION 115

- (Exam Topic 4)

Your network contains an Active Directory domain. The domain contains 1,000 computers that run Windows 10.

A user reports that his computer has a compatibility issue with the latest Windows 10 feature update.

You need to prevent other computers from installing the feature update for 10 days while you mitigate the issue.

Which Windows Update setting should you configure by using a Group Policy Object (GPO)?

- A. Select when Preview Builds and Feature Updates are received
 B. Reschedule Automatic Updates scheduled installations
 C. Disable safeguards for Feature Updates
 D. Automatic Updates detection frequency

Answer: A

Explanation:

Reference:

<https://docs.microsoft.com/en-us/windows/deployment/update/waas-wufb-group-policy>

NEW QUESTION 116

- (Exam Topic 4)

Your network contains an Active Directory domain. The domain contains the computers shown in the following table.

Name	Operating system
Computer1	Windows 10 Enterprise
Computer2	Windows 10 Pro
Computer3	Windows 10 Pro

Microsoft Defender Application Guard is installed on the computers.

Application Guard Group Policy settings are applied to the computers as shown in the following table.

Setting	State
Turn on Windows Defender Application Guard in Managed Mode	Enabled
Configure Windows Defender Application Guard clipboard settings	Enabled
Allow files to download and save to the host operating system from Windows Defender Application Guard	Enabled

For each of the following statements, select Yes if the statement is true. Otherwise, select No. NOTE: Each correct selection is worth one point.

Answer Area

Statements	Yes	No
Computer1 can use Application Guard in Enterprise-managed mode.	<input type="radio"/>	<input type="radio"/>
Computer2 can copy clipboard settings from Microsoft Edge to Application Guard.	<input type="radio"/>	<input type="radio"/>
Computer3 can download files from Application Guard to the host operating system.	<input type="radio"/>	<input type="radio"/>

- A. Mastered

B. Not Mastered

Answer: A

Explanation:

Answer Area

Statements	Yes	No
Computer1 can use Application Guard in Enterprise-managed mode.	<input checked="" type="radio"/>	<input type="radio"/>
Computer2 can copy clipboard settings from Microsoft Edge to Application Guard.	<input checked="" type="radio"/>	<input type="radio"/>
Computer3 can download files from Application Guard to the host operating system.	<input checked="" type="radio"/>	<input type="radio"/>

NEW QUESTION 118

- (Exam Topic 4)

You have a computer named Computer1 that runs Windows10. Computer1 is in a workgroup. Computer1 contains the users shown in the following table.

Name	Member of
User1	Group1
User2	Group1
User3	Group1
User4	Users
Admin1	Administrators

You need to apply the same Group Policy settings to only User1, User2 and User3. The solution must use a minimum number of local Group Policy objects (GPOs).

How many local GPOs should you create?

- A. 1
- B. 2
- C. 3

Answer: A

Explanation:

You can use security filtering to restrict the GPO to the required users. Only users with the Read and Apply Group Policy permissions will have the GPO applied to them.

NEW QUESTION 122

- (Exam Topic 4)

You need to ensure that User1 can perform a Resultant Set of Policy (RSOP) analysis for User2. The solution must use the principle of least privilege.

What should you do first?

- A. Add User1 to the local Administrators group.
- B. Add User2 to the local Performance Monitor Users group.
- C. Run RSoP from an elevated-privilege account.
- D. Add User1 to the local Performance Monitor Users group.

Answer: D

NEW QUESTION 126

- (Exam Topic 4)

Your network contains the segments shown in the following table.

Name	Domain controller connectivity	Internet connectivity
Segment1	Yes	Yes
Segment2	No	Yes

You have computers that run Windows 10 and are configured as shown in the following table.

Name	Shared folder	Share permission	Active Directory joined	Connected to
Computer1	Share1	Everyone: Full control	Yes	Segment1
Computer2	Share2	Everyone: Full control	Yes	Segment2
Computer3	Share3	Everyone: Full control	No	Segment1

Windows Defender Firewall has the File and Printer Sharing allowed apps rule shown in the following table.

Computer	Domain	Private	Public
Computer1	Allowed	Not allowed	Not allowed
Computer2	Allowed	Allowed	Not allowed
Computer3	<i>Not applicable</i>	Allowed	Allowed

For each of the following statements, select Yes if the statement is true. Otherwise, select No.
 NOTE: Each correct selection is worth one point.

Statements	Yes	No
You can access Share1 from Computer3.	<input type="radio"/>	<input type="radio"/>
You can access Share2 from Computer3.	<input type="radio"/>	<input type="radio"/>
You can access Share3 from Computer1.	<input type="radio"/>	<input type="radio"/>

- A. Mastered
- B. Not Mastered

Answer: A

Explanation:

Statements	Yes	No
You can access Share1 from Computer3.	<input type="radio"/>	<input checked="" type="radio"/>
You can access Share2 from Computer3.	<input type="radio"/>	<input checked="" type="radio"/>
You can access Share3 from Computer1.	<input checked="" type="radio"/>	<input type="radio"/>

NEW QUESTION 129

- (Exam Topic 4)

Note: This question is part of a series of questions that present the same scenario. Each question in the series contains a unique solution that might meet the stated goals. Some question sets might have more than one correct solution, while others might not have a correct solution.

After you answer a question in this section, you will NOT be able to return to it. As a result, these questions will not appear in the review screen.

Your network contains an Active Directory domain named contoso.com. The domain contains the users shown in the following table.

Name	Member of
User2	Domain Users
User3	Domain Admins
User4	Server Operators

You have a computer named Computer1 that runs Windows 10 and is in a workgroup.

A local standard user on Computer1 named User1 joins the computer to the domain and uses the credentials of User2 when prompted.

You need to ensure that you can rename Computer1 as Computer33. Solution: You use the credentials of User2 on Computer1.

Does this meet the goal?

- A. Yes
- B. No

Answer: B

Explanation:

Renaming a domain-joined computer will also rename the computer account in the domain. To do this, you need domain administrator privileges.

User2 is a domain user, not an administrator. Use User3's credentials instead. References:

<https://docs.microsoft.com/en-us/windows/security/identity-protection/access-control/active-directory-security-g>

NEW QUESTION 134

- (Exam Topic 4)

You have a computer that runs Windows 11 and has Windows Sandbox enabled.

You need to configure a Windows Sandbox environment. The solution must meet the following requirements:

- Support a virtual GPU.
- Mount the C:\Temp folder as read only.
- Prevent users from copying files to the sandbox by using the clipboard.

How should you complete the configuration file? To answer, drag the appropriate values to the correct targets. Each value may be used once, more than once, or not at all. You may need to drag the split bar between panes or scroll to view content.

Values

Default

Disable

Enable

False

True

Answer Area

```
<Configuration>
  <VGpu>  </VGpu>
  <Networking>Disable</Networking>
  <MappedFolders>
    <MappedFolder>
      <HostFolder>C:\temp</HostFolder>
      <ReadOnly>  </ReadOnly>
    </MappedFolder>
  </MappedFolders>
  <LogonCommand>
    <Command>C:\users\WDAGUtilityAccount\Desktop\Temp\startup.cmd</Command>
  </LogonCommand>
  <ProtectedClient>  </ProtectedClient>
  <ClipboardRedirection>Default</ClipboardRedirection>
  <MemoryInMB>6144</MemoryInMB>
</Configuration>
```

- A. Mastered
 B. Not Mastered

Answer: A

Explanation:

Answer Area

```
<Configuration>
  <VGpu>  </VGpu>
  <Networking>Disable</Networking>
  <MappedFolders>
    <MappedFolder>
      <HostFolder>C:\temp</HostFolder>
      <ReadOnly>  </ReadOnly>
    </MappedFolder>
  </MappedFolders>
  <LogonCommand>
    <Command>C:\users\WDAGUtilityAccount\Desktop\Temp\startup.cmd</Command>
  </LogonCommand>
  <ProtectedClient>  </ProtectedClient>
  <ClipboardRedirection>Default</ClipboardRedirection>
  <MemoryInMB>6144</MemoryInMB>
</Configuration>
```

NEW QUESTION 136

- (Exam Topic 4)

Note: This question is part of a series of questions that present the same scenario. Each question in the series contains a unique solution that might meet the stated goals. Some question sets might have more than one correct solution, while others might not have a correct solution.

After you answer a question in this section, you will NOT be able to return to it. As a result, these questions will not appear in the review screen.

Your network contains an Active Directory domain. The domain contains a computer named Computer1 that runs Windows 8.1.

Computer1 has apps that are compatible with Windows 10.

You need to perform a Windows 10 in-place upgrade on Computer1.

Solution: You copy the Windows 10 installation media to a Microsoft Deployment Toolkit (MDT) deployment share. You create a task sequence, and then you run the MDT deployment wizard on Computer1.

Does this meet the goal?

- A. Yes
- B. No

Answer: A

Explanation:

Reference:

https://docs.microsoft.com/en-us/windows/deployment/deploy-windows-mdt/upgrade-to-windows-10-with-the

NEW QUESTION 139

- (Exam Topic 4)

You have a workgroup computer named Computer1 that runs Windows 10 and has the users shown in the following table.

Name	Member of
User1	Administrators
User2	Users

You have a file named File1.reg that contains the following content.

```
Windows Registry Editor Version 5.00
```

```
[HKEY_CURRENT_USER\System\Key1]
```

```
[HKEY_LOCAL_MACHINE\System\Key2]
```

You need to identify what occurs when User1 and User2 double-click File1.reg.

What should you identify? To answer, select the appropriate options in the answer area.

NOTE: Each correct selection is worth one point.

Answer Area

When User1 double-clicks **File1.reg**:

▼

☐ No change is made to registry.
 ☐ Only Key1 is added to the registry.
 ☐ Only Key2 is added to the registry.
 ☐ Key1 and Key2 are added to the registry.

When User2 double-clicks **File1.reg**:

▼

☐ No change is made to registry.
 ☐ Only Key1 is added to the registry.
 ☐ Only Key2 is added to the registry.
 ☐ Key1 and Key2 are added to the registry.

- A. Mastered
- B. Not Mastered

Answer: A

Explanation:

Box 1:

User1 is a member of the Administrators group so has permission to add keys to both registry hives. Box 2:

User2 is a standard user so does not have permission to add a key to the HKEY_LOCAL_MACHINE registry hive so Key2 will not be imported.

NEW QUESTION 140

- (Exam Topic 4)

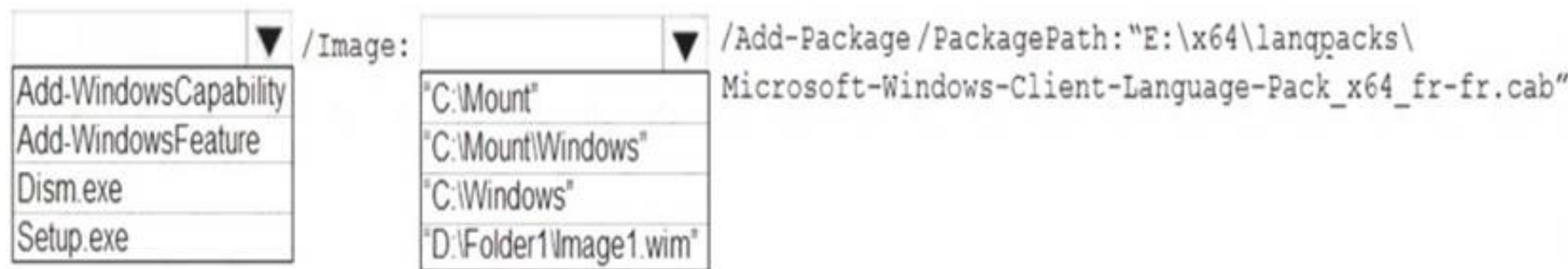
You have the source files shown in the following table.

Source	Location
Custom Windows 10 image	D:\Folder1\Image1.wim
Windows 10 language pack DVD	E:\

You mount an image from Image1.wim to a folder named C:\Mount. You need to add the French language pack to the mounted image.

How should you complete the command? To answer, select the appropriate options in the answer area.

NOTE: Each correct selection is worth one point.



- A. Mastered
 B. Not Mastered

Answer: A

Explanation:

Note: The referenced document has the mount directory as C:\Mount\Windows. In this question, the mount directory is C:\Mount.

Reference:

<https://docs.microsoft.com/en-us/windows-hardware/manufacture/desktop/add-language-packs-to-windows>

NEW QUESTION 142

- (Exam Topic 4)

You have a computer named Computer1. Computer1 runs Windows 10 Pro. You attempt to start Computer1 but you receive the following error message: Bootmgr is missing.

You need to be able to start Computer1.

What should you do?

- A. Start the computer in recovery mode and run the boocrec /rebuildbcd command.
 B. Start the computer in recovery mode and run the dislcparr /repair command.
 C. Start the computer in recovery mode and run the bcdboot /s command.
 D. Start the computer in recovery mode and run the booccfg /debug command.

Answer: A

Explanation:

Reference:

<https://neosmart.net/wiki/bootmgr-is-missing/>

NEW QUESTION 143

- (Exam Topic 4)

Note: This question is part of a series of questions that present the same scenario. Each question in the series contains a unique solution that might meet the stated goals. Some question sets might have more than one correct solution, while others might not have a correct solution.

After you answer a question in this section, you will NOT be able to return to it. As a result, these questions will not appear in the review screen.

A user named User1 has a computer named Computer1 that runs Windows 10. Computer1 is joined to an Azure Active Directory (Azure AD) tenant named contoso.com. User1 joins Computer1 to contoso.com by using user1@contoso.com.

Computer1 contains a folder named Folder1. Folder1 is in drive C and is shared as Share1. Share1 has the permission shown in the following table.

Group	Share permission
Everyone	Full control
AzureAD\user1@contoso.com	Owner

A user named User2 has a computer named Computer2 that runs Windows 10. User2 joins Computer2 to contoso.com by using user2@contoso.com.

User2 attempts to access Share1 and receives the following error message: "The username or password is incorrect."

You need to ensure that User2 can connect to Share1.

Solution: In Azure AD, you create a group named Group1 that contains User1 and User2. You grant Group1 Change access to Share1.

Does this meet the goal?

- A. Yes
 B. No

Answer: A

Explanation:

References:

<https://docs.microsoft.com/en-us/azure/storage/files/storage-files-active-directory-enable#assign-access-permiss>

NEW QUESTION 144

- (Exam Topic 4)

You have computers that run Windows 11 as shown in the following table.

Name	IP address	Joined to
Computer1	192.168.10.10	Active Directory
Computer2	192.168.10.15	Workgroup

You ping 192.168.10.15 from Computer1 and discover that the request timed out. You need to ensure that you can successfully ping 192.168.10.15 from Computer1.

Solution: On Computer2, you share a folder. Does this meet the goal?

- A. Yes
- B. No

Answer: B

NEW QUESTION 149

- (Exam Topic 4)

You have two computers named Client1 and Client2 that run Windows 10. You perform the following actions on Client1:

- Enable Hyper-V.
- Create a virtual machine named VM1 that runs Windows 10 Pro.
- Install a Microsoft SQL Server 2019 instance on VM1. You plan to deploy a copy of VM1 to Client2.

You need to create an export of VM1. The solution must ensure that the captured state is transactional^ consistent.

Which three PowerShell commands should you run in sequence on Client1? To answer, move the appropriate cmdlets from the list of cmdlets to the answer area and arrange them in the correct order.

Commands

Get-VMCheckpoint -VMName VM1

Set-VM -Name VM1 -CheckpointType Production

Checkpoint-VM Name VM1

Restore-VMCheckpoint -Name VM1Checkpoint -Confirm:\$false

Export-VMCheckpoint -VMName VM1 -Name VM1Checkpoint -Path C:\Export

Answer Area

1

2

3

- A. Mastered
- B. Not Mastered

Answer: A

Explanation:

Commands

Get-VMCheckpoint -VMName VM1

Set-VM -Name VM1 -CheckpointType Production

Checkpoint-VM Name VM1

Restore-VMCheckpoint -Name VM1Checkpoint -Confirm:\$false

Export-VMCheckpoint -VMName VM1 -Name VM1Checkpoint -Path C:\Export

Answer Area

Checkpoint-VM Name VM1

Restore-VMCheckpoint -Name VM1Checkpoint -Confirm:\$false

Export-VMCheckpoint -VMName VM1 -Name VM1Checkpoint -Path C:\Export

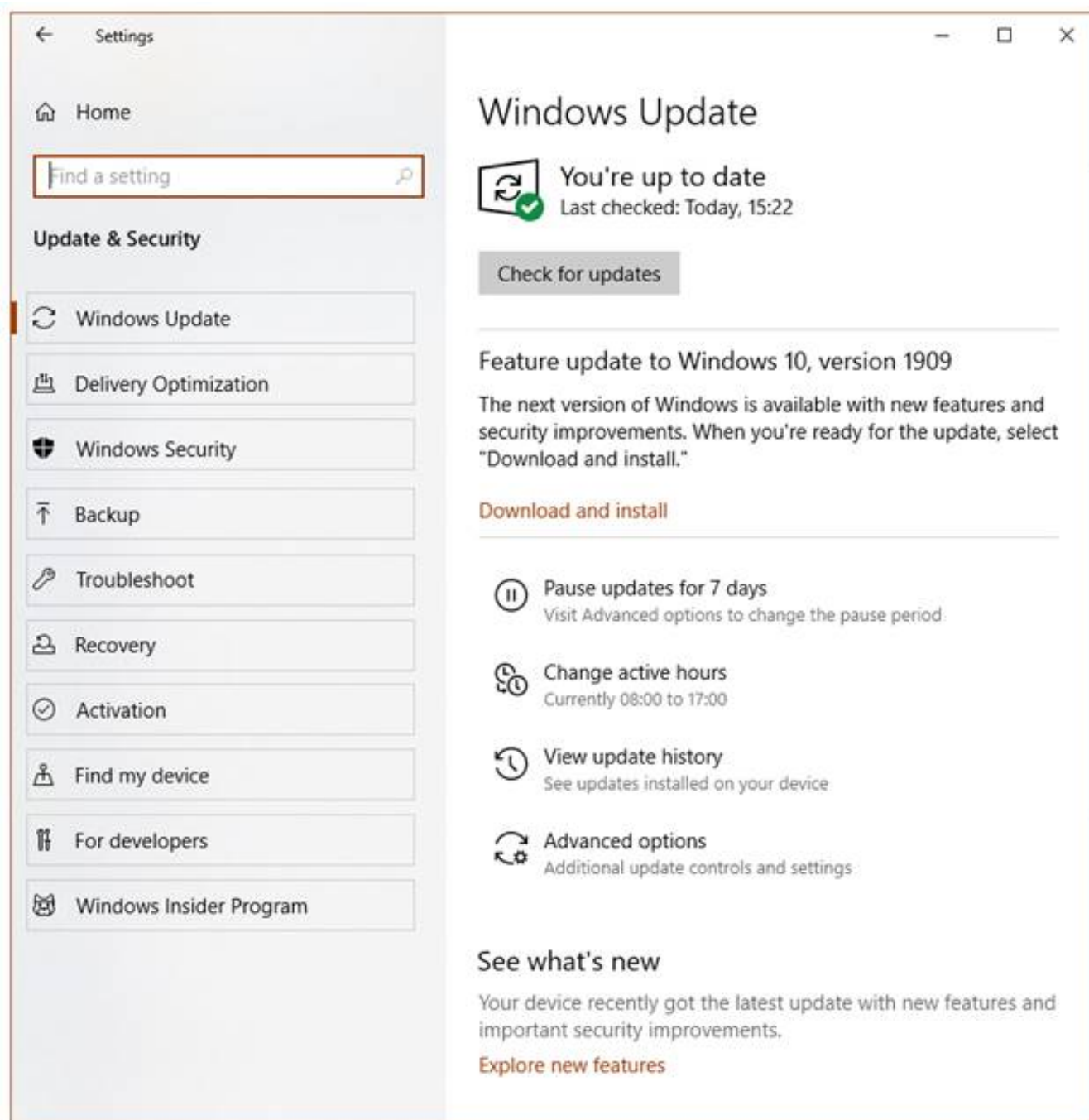
NEW QUESTION 153

- (Exam Topic 4)

You have a computer named Computer1. Computer1 runs Windows 10 Pro. You want to use Computer1to test new Windows features.

You need to configure Computer1to receive preview builds of Windows 10 as soon as they are available. You open the Update & Security section in the Settings app.

What should you configure? To answer, select the appropriate options in the answer area.



- A. Mastered
- B. Not Mastered

Answer: A

Explanation:

Graphical user interface, text, application, email Description automatically generated

Reference:

<https://insider.windows.com/en-us/getting-started/>

NEW QUESTION 158

- (Exam Topic 4)

You have a computer that runs Windows 10. The computer contains a folder. The folder contains sensitive data.

You need to log which user reads the contents of the folder and modifies and deletes files in the folder. You need to log which user reads the contents of the folder and modifies and deletes files in the folder.

Solution: from the properties of the folder, you configure the Auditing settings and from the Audit Policy in the local Group Policy, you configure Audit system events.

Does this meet the goal?

- A. Yes
- B. No

Answer: B

Explanation:

Files and folders are objects and are audited through object access, not through system events. References:

https://www.netwrix.com/how_to_detect_who_changed_file_or_folder_owner.html

NEW QUESTION 159

- (Exam Topic 4)

You plan to install Windows 10 on a new computer by using an answer file. You need to create the answer file.

Which tool should you use to create the answer file, and which file is required by the tool? To answer, select the appropriate options in the answer area.

NOTE: Each correct selection is worth one point.

Tool to create the answer file:

Windows PE (WinPE)

Windows Configuration Designer

Microsoft Deployment Toolkit (MDT)

Windows System Image Manager (Windows SIM)

File required by the tool:

Boot.wim

Setup.exe

Install.wim

Autorun.inf

- A. Mastered
B. Not Mastered

Answer: A

Explanation:

Graphical user interface, text, application, email Description automatically generated

NEW QUESTION 164

- (Exam Topic 4)

You have two workgroup computers named Computer1 and Computer2 that run Windows 10. The Guest account is enabled on both computers. The computers contain the users shown in the following table.

Computer name	User name	User password
Computer1	User1	P@ssword1
Computer1	User2	P@ssword2
Computer2	User1	P@ssword1
Computer2	User2	P@ssword2
Computer2	User3	P@ssword3

The computers contain the shared folders shown in the following table.

Computer name	Shared folder name	Permission
Computer1	Share1	Everyone – Read
Computer2	Share2	Everyone – Read

Computer1 has password-protected sharing turned on. Computer2 has password-protected sharing turned off. For each of the following statements, select Yes if the statement is true. Otherwise, select No.

NOTE: Each correct selection is worth one point.

Statements

Yes

No

From Computer1, User1 can access Share2.

☐
☐

From Computer2, User2 can access Share1.

☐
☐

From Computer2, User3 can access Share1.

☐
☐

- A. Mastered
B. Not Mastered

Answer: A

Explanation:

When password protected sharing is turned on, only people who have a user account and password on your computer can access shared files.

Box 1: Yes

Password protected sharing is turned off on Computer2 so User1 can access Share2 from Computer1.

Box 2: Yes

Password protected sharing is turned on on Computer1. User2 has an account on Computer1 so User2 can access Share1 from Computer2.

Box 3: Yes

The answer to this question depends on which version of Windows 10 is running on the computers. This isn't specified in the question so it's likely that the question will be updated in future.

Password protected sharing is turned on on Computer1. User3 does not have an account on Computer1 so User3 cannot access Share1 from Computer2.

However, the Guest account is enabled which could provide access depending on which version of Windows 10 is running. If it is Windows 10 Home or Pro, then the answer to this question is Yes. The Guest account does provide access. However, in later versions of Windows 10 Enterprise and Windows 10 Education (from build 1709 onwards), the Guest account does not enable access to the shared folder.

Reference:

<https://docs.microsoft.com/en-us/troubleshoot/windows-server/networking/guest-access-in-smb2-is-disabled-by>

NEW QUESTION 166

- (Exam Topic 4)

You have a computer that runs Windows 10 and has File History enabled. File History is configured to save copies of files every 15 minutes.

At 07:55, you create a file named D:\Folder1\File1.docx.

You add D:\Folder1 to File History and manually run File History at 08:00. You modify File1.docx at the following times:

> 08:05

> 08:12

> 08:20

> 08:24

> 08:50

At 08:55, you attempt to restore File1.docx.

How many previous versions of File1.docx will be available to restore?

A. 2

B. 3

C. 4

D. 5

Answer: C

NEW QUESTION 167

- (Exam Topic 4)

You have 100 computers that run Windows 10. The computers are in a workgroup. The computers have a low-bandwidth metered Internet connection.

You need to reduce the amount of Internet bandwidth consumed to download updates. What should you configure?

A. BranchCache in hosted mode

B. BranchCache in distributed cache mode

C. Delivery Optimization

D. Background intelligent Transfer Service (BITS)

Answer: C

Explanation:

References:

<https://support.microsoft.com/en-us/help/4468254/windows-update-delivery-optimization-faq>

NEW QUESTION 170

- (Exam Topic 4)

A user has a computer that runs Windows 10.

When the user connects the computer to the corporate network, the user cannot access the internal corporate servers. The user can access servers on the Internet.

You run the ipconfig command and receive the following output.

```
Connection-specific DNS Suffix . : 
Description . . . . . : Ethernet 1
Physical Address. . . . . : 00-50-B6-7B-E4-81
DHCP Enabled. . . . . : Yes
Autoconfiguration Enabled . . . . : Yes
Link-local IPv6 Address . . . . . : fe80::5d56:3419:e83b:3c46%17(Preferred)
IPv4 Address. . . . . : 192.168.0.121(Preferred)
Subnet Mask . . . . . : 255.255.255.0
Lease Obtained. . . . . : Wednesday, October 31, 2018 8:07:14 AM
Lease Expires . . . . . : Wednesday, October 31, 2018 8:07:14 PM
Default Gateway . . . . . : 192.168.0.1
DHCP Server . . . . . : 192.168.0.2
DHCPv6 IAID . . . . . : 536891574
DHCPv6 Client DUID. . . . . : 00-01-00-01-22-AC-5F-64-00-50-B6-7B-E4-81
DNS Servers . . . . . : 131.107.10.60
                        192.168.0.3
NetBIOS over Tcpip. . . . . : Enabled
```

You send a ping request and successfully ping the default gateway, the DNS servers, and the DHCP server. Which configuration on the computer causes the issue?

- A. the DNS servers
- B. the IPv4 address
- C. the subnet mask
- D. the default gateway address

Answer: A

NEW QUESTION 172

- (Exam Topic 4)

You have a computer named Computer1 that runs Windows 10.

You complete a full back up of Computer1 to an external USB drive. You store the USB drive offsite.

You delete several files from your personal Microsoft OneDrive account by using File Explorer, and then you empty the Recycle Bin on Computer1.

You need to recover the files 60 days after you deleted them in the least amount of time possible. What should you use?

- A. the OneDrive recycle bin
- B. the full backup on the external USB drive
- C. Recovery in the Settings app

Answer: B

Explanation:

References:

<https://support.office.com/en-us/article/restore-deleted-files-or-folders-in-onedrive-949ada80-0026-4db3-a953-c>

NEW QUESTION 173

- (Exam Topic 4)

You have four computers that run Windows 10. The computers are configured as shown in the following table.

Name	Member of
Computer1	Workgroup named WG1
Computer2	Workgroup named WG1
Computer3	Workgroup named WG2
Computer4	Active Directory domain named contoso.com

On Computer1, you create a user named User1. In the domain, you create a user named User2. You create the groups shown in the following table.

Name	Created on/in
Group3	Computer3
Group4	Computer4
Group5	Contoso.com

You need to identify to which computers User1 can sign in, and to which groups you can add User2.

What should you identify? To answer, select the appropriate options in the answer area.

NOTE: Each correct selection is worth one point.

User1 can sign in to:

▼

☐ Computer1 only
 ☐ Computer1 and Computer2 only
 ☐ Computer1, Computer2, and Computer3 only
 ☐ Computer1, Computer2, and Computer4 only
 ☐ Computer1, Computer2, Computer3, and Computer4

You can add User2 to:

▼

☐ Group5 only
 ☐ Group4 and Group5 only
 ☐ Group3, Group4, and Group5

- A. Mastered
- B. Not Mastered

Answer: A

Explanation:

Box 1: Computer 1 only.

User1's account was created on Computer1. The account is a local account on Computer1. Therefore, User1 can only sign in to Computer1.

Box 2: Group5 only.

User2's account was created in the domain. A domain is a security boundary. Therefore, you can only add User2 to groups in the domain.

NEW QUESTION 177

- (Exam Topic 4)

Note: This question is part of a series of questions that present the same scenario. Each question in the series contains a unique solution that might meet the stated goals. Some question sets might have more than one correct solution, while others might not have a correct solution.

After you answer a question in this section, you will NOT be able to return to it. As a result, these questions will not appear in the review screen.

You have a computer that runs Windows 10. The computer contains a folder named D:\Scripts. D:\Scripts contains several PowerShell scripts.

You need to ensure that you can run the PowerShell scripts without specifying the full path to the scripts. The solution must persist between PowerShell sessions.

Solution: From PowerShell, you run `$env:Path += ";d:\scripts"`. Does this meet the goal?

- A. Yes
- B. No

Answer: A

Explanation:

References:

https://docs.microsoft.com/en-us/powershell/module/microsoft.powershell.core/about/about_environment_varia

NEW QUESTION 180

- (Exam Topic 4)

You sign in to a computer that runs Windows 10 Pro.

You need to ensure that after a restart, the computer starts automatically in Safe Mode with Networking. What should you use to configure the restart options?

- A. bootcfg
- B. BCDEdit
- C. Windows System Image Manager (Windows SIM)
- D. bootrec

Answer: B

Explanation:

Reference:

<https://www.lifewire.com/how-to-force-windows-to-restart-in-safe-mode-2625163>

NEW QUESTION 183

- (Exam Topic 4)

Your company has an on-premises network that contains an Active Directory domain. The domain is synced to Microsoft Azure Active Directory (Azure AD). All computers in the domain run Windows 10 Enterprise.

You have a computer named Computer1 that has a folder named C:\Folder1. You want to use File History to protect C:\Folder1.

Solution: You enable File History on Computer1. You then enable archiving for Folder1.

Does this meet the goal?

- A. Yes
- B. No

Answer: B

Explanation:

File History only backs up copies of files that are in Libraries, and Desktop folders and the OneDrive files available offline on your PC. If you have files or folders elsewhere that you want backed up, you can add them to one of these folders.

Reference:

<https://support.microsoft.com/en-us/help/17128/windows-8-file-history>

NEW QUESTION 184

- (Exam Topic 4)

Your network contains an Active Directory domain. The domain contains computers that run Windows 10. You need to provide a user with the ability to remotely create and modify shares on the computers. The solution must use the principle of least privilege.

To which group should you add the user?

- A. Power Users
- B. Remote Management Users
- C. Administrators
- D. Network Configuration Operators

Answer: C

NEW QUESTION 189

- (Exam Topic 4)

You have a computer that runs Windows 8.1.

When you attempt to perform an in-place upgrade to Windows 10, the computer fails to start after the first restart.

You need to view the setup logs on the computer. Which folder contains the logs?

- A. \Windows.\BT\Sources\Panther\
- B. \Windows\Logs
- C. \Windows\Temp
- D. \Windows.\BT\Inf

Answer: A

Explanation:

References:

<https://docs.microsoft.com/en-us/windows-hardware/manufacture/desktop/windows-setup-log-files-and-eventlo>

NEW QUESTION 192

- (Exam Topic 4)

You have a computer named Computer1 that runs Windows 10. You are troubleshooting connectivity issues on Computer1. You need to view the remote addresses to which Computer1 has active TCP connections. Which tool should you use?

- A. Performance Monitor
- B. Task Manager
- C. Resource Monitor
- D. Windows Defender Firewall with Advanced Security

Answer: C

NEW QUESTION 194

- (Exam Topic 4)

Your network contains an Active Directory domain. The domain contains three computers named Computer1, Computer2, and Computer3 that run Windows 10. The computers are on the same network and have network connectivity.

Windows Defender Firewall on Computer1 has the server-to-server connection security rule shown in the following table.

Name	Endpoint 1	Endpoint 2	Authentication mode
Rule1	Any	Any	Require inbound and request outbound

Windows Defender Firewall on Computer2 has the server-to-server connection security rule shown in the following table.

Name	Endpoint 1	Endpoint 2	Authentication mode
Rule1	Any	Any	Do not authenticate

Windows Defender Firewall on Computer3 has the server-to-server connection security rule shown in the following table.

Name	Endpoint 1	Endpoint 2	Authentication mode
Rule1	Any	Any	Require inbound and request outbound

All the connection security rules are enabled and configured to use only the Computer (Kerberos VS) authentication method.

For each of the following statements, select Yes if the statement is true. Otherwise, select No.

NOTE: Each correct selection is worth one point.

Statements	Yes	No
If Computer1 initiates communication to Computer2, network traffic will be encrypted.	<input type="radio"/>	<input type="radio"/>
Computer2 can establish communications to Computer3.	<input type="radio"/>	<input type="radio"/>
If Computer3 initiates communication to Computer1, network traffic will be encrypted.	<input type="radio"/>	<input type="radio"/>

- A. Mastered
- B. Not Mastered

Answer: A

Explanation:

NO NO NO

Traffic will not be encrypted by default. The question does not have this option configured by default. Encryption is optional, not default to authentications. Encryption needs to be enabled in the GPO. The default is data integrity which is not default to encrypt. Actually, if you encrypt you will use both integrity with encryption. Devices in the encryption zone require authentication to communicate with other devices.

NEW QUESTION 197

- (Exam Topic 4)

You have a Microsoft 365 tenant that contains 70 remote users. The remote users work from various locations.

Recently, each remote user purchased a personal computer that runs Windows 10 Home.

You need to configure the VPN settings on the computers automatically by using the least amount of administrative effort.

What should you use?

- A. an unattend answer file
- B. a Group Policy Object (GPO)
- C. Windows Autopilot
- D. a provisioning package

Answer: D

Explanation:

Reference:

<https://docs.microsoft.com/en-us/windows/configuration/provisioning-packages/provisioning-packages>

NEW QUESTION 202

- (Exam Topic 4)

Your company deploys Windows 10 Enterprise to all computers. All the computers are joined to Microsoft Azure Active Directory (Azure AD).

The company purchases a new computer for a new user and creates an Azure AD account for the user. The user signs in to the computer by using the Azure AD account. The user discovers the activation error shown in the following exhibit.

Activation

Windows

Edition	Windows 10 Pro
Activation	Windows is not activated
Product ID	XXXXX-XXXXX-XXXXX-XXXXX
Product Key	XXXXX-XXXXX-XXXXX-XXXXX-XXXXX

Windows can't activate at this time. Try activating again later. If that doesn't work, contact your system administrator. Error code: 0x800705B4

If you're having problems with activation, select Troubleshoot to try to fix the problem.



Activate Windows now

Running a non-genuine copy of Windows can put you at greater risk from viruses and other security threats.

Go to the Store to buy genuine Windows or enter a product key.



You need to activate Windows 10 Enterprise on the computer. What should you do?

- A. In Azure A
- B. assign a Windows 10 Enterprise license to the user.
- C. At the command prompt, run `slmgr /ltc`.
- D. Reinstall Windows as Windows 10 Enterprise.
- E. At the command prompt, run `slmgr /ato`.

Answer: A

Explanation:

Reference:

<https://docs.microsoft.com/en-us/windows/deployment/windows-10-subscription-activation>

NEW QUESTION 203

- (Exam Topic 4)

You have a computer that runs Windows 10 and hosts four Hyper-V virtual machines that run Windows 10. You upgrade the computer to Windows 11.

You need to ensure that the virtual machines support hibernation. What should you do?

- A. Update the configuration version of the virtual machines.
- B. Enable integration services.
- C. Rebuild the virtual machines as generation 2 virtual machines.
- D. Delete any virtual machine checkpoints.

Answer: A

NEW QUESTION 205

- (Exam Topic 4)

Your network an Active Directory domain named adatum.com. The domain contains 50 computers that runs Windows 8.1. The computer has locally installed desktop application that are compatible with Windows 10.

You need to upgrade the computers to windows 10, The solution must preserver the locally installed desktop applications.

Solution: You use Microsoft Deployment Toolkit (MDT) and create a task sequence. One each compute, you run the task sequence.

Does the meet the goal?

- A. Yes
- B. No

Answer: B

NEW QUESTION 206

- (Exam Topic 4)

You have the computers shown in the following table.

Name	Windows 10 edition
Computer1	Windows 10 Pro
Computer2	Windows 10 Pro Workstations
Computer3	Windows 10 Enterprise

You need to identify which computers support the features.

- > BitLocker Drive Encryption (BitLocker)
- > Microsoft Application Virtualization (App-V)

Which computers support the features? To answer, select the appropriate options in the answer area.

NOTE: Each correct selection is worth one point.

BitLocker:

- Computer1 only
- Computer2 only
- Computer3 only
- Computer1 and Computer3 only
- Computer2 and Computer3 only
- Computer1, Computer2, and Computer3

App-V:

- Computer1 only
- Computer2 only
- Computer3 only
- Computer1 and Computer3 only
- Computer2 and Computer3 only
- Computer1, Computer2, and Computer3

- A. Mastered
- B. Not Mastered

Answer: A

Explanation:

Graphical user interface, text, application Description automatically generated

References:

<https://www.microsoft.com/en-us/windowsforbusiness/compare>

NEW QUESTION 208

- (Exam Topic 4)

You install Windows 10 Pro on a computer named CLIENT1.

You need to ensure that all per-user services are disabled on CLIENT1. The solution must minimize administrative effort.

What should you use?

- A. the sc command
- B. Task Manager
- C. Services
- D. the sfc command

Answer: A

NEW QUESTION 213

- (Exam Topic 4)

You have 10 new Windows 10 devices.

You plan to deploy a provisioning package that will configure a wireless network profile.

You need to ensure that a support technician can install the provisioning package on the devices. The solution must use the principle of least privilege.

To which group should you add the support technician?

- A. Users
- B. Power Users

C. Network Configuration Operators
D. Administrators

Answer: D

Explanation:

Reference:

<https://docs.microsoft.com/en-us/windows/configuration/provisioning-packages/provisioning-apply-package>

NEW QUESTION 214

- (Exam Topic 3)

You need to ensure that you can manage Computer2 by using Windows Admin Center on Server1. What should you do on Computer2?

- A. Install the Remote Server Administration Tool (RSAT) optional features.
- B. Run the winrm quickconfig command.
- C. Set the Windows Management Service Startup type to Automatic and start the service.
- D. Run the Sec-Location cmdlet.

Answer: B

Explanation:

References:

<https://docs.microsoft.com/en-us/windows-server/manage/windows-admin-center/azure/manage-azure-vm>s

NEW QUESTION 219

- (Exam Topic 3)

Which users can create a new group on Computer3?

- A. User31 only
- B. User1 and User32 only
- C. Admin1 and User31 only
- D. Admin1, User31, and User32 only

Answer: A

Explanation:

Reference:

https://ss64.com/nt/syntax-security_groups.html

NEW QUESTION 222

- (Exam Topic 3)

Which users can sign in to Computer3 when the computer starts in Safe Mode?

- A. User31 only
- B. User31 and User32 only
- C. User31 and Admin1 only
- D. User31, User 32, User33, and Admin1
- E. User31, User32, and User33 only

Answer: A

Explanation:

Only users with membership of the local Administrators group can log on to a computer in safe mode. Admin1 cannot log in because Computer3 is not joined to the domain.

References:

<https://support.microsoft.com/en-us/windows/advanced-startup-options-including-safe-mode-b90e7808-80b5-a2>

NEW QUESTION 226

- (Exam Topic 3)

You need to ensure that you can manage Computer2 by using Windows Admin Center on Server1. What should you do on Computer2?

- A. Allow the Windows Remote Management (WinRM) feature through Windows Defender Firewall.
- B. Run the set - Location cmdlet
- C. Allow the Windows Device Management feature through Windows Defender Firewall.
- D. Run the winrm quickconfig command.

Answer: D

NEW QUESTION 231

- (Exam Topic 3)

For each of the following statements, select Yes if the statement is true. Otherwise, select No. NOTE Each correct selection is worth one point.

Answer Area

	Statements	Yes	No
<input type="radio"/>	When User1 attempts to open D:\Folder1\Report.docx, an event is created in the security event log.	<input type="radio"/>	<input type="radio"/>
<input type="radio"/>	When User1 attempts to save changes to D:\Folder1\Report.docx, an event is created in the security event log.	<input type="radio"/>	<input type="radio"/>
<input type="radio"/>	When User2 attempts to open D:\Folder1\Report.docx, an event is created in the security event log.	<input type="radio"/>	<input type="radio"/>

- A. Mastered
B. Not Mastered

Answer: A

Explanation:

Answer Area

	Statements	Yes	No
<input type="radio"/>	When User1 attempts to open D:\Folder1\Report.docx, an event is created in the security event log.	<input checked="" type="radio"/>	<input type="radio"/>
<input type="radio"/>	When User1 attempts to save changes to D:\Folder1\Report.docx, an event is created in the security event log.	<input checked="" type="radio"/>	<input type="radio"/>
<input type="radio"/>	When User2 attempts to open D:\Folder1\Report.docx, an event is created in the security event log.	<input type="radio"/>	<input checked="" type="radio"/>

NEW QUESTION 234

- (Exam Topic 3)

Which users can sign in to Computer2 by using Remote Desktop?

- A. Admin1 only
B. User 1 only
C. Admin1 and User2 only
D. Admin1, User1, User2, and User3
E. User2 only

Answer: C

Explanation:

Reference:

<https://4sysops.com/archives/user-rights-assignment-in-windows-server-2016/>

NEW QUESTION 235

- (Exam Topic 3)

On Computer1, you need to configure the custom Visual Effects performance settings. Which user accounts can you use?

- A. Admm1,User11, and User13 only
B. Admin1 only
C. Admin1, User11, and User12 only
D. Admin1, User11, User12, and User13
E. Admin1 and User11 only

Answer: D

NEW QUESTION 237

- (Exam Topic 2)

You need to meet the technical requirements for EFS on ComputerA. What should you do?

- A. Run certutil.exe, and then add a certificate to the local computer certificate store.
B. Run cipher.exe, and then add a certificate to the local computer certificate store.
C. Run cipher.exe, and then add a certificate to the local Group Policy.
D. Run certutil.exe, and then add a certificate to the local Group Policy.

Answer: D

Explanation:

References:

<https://docs.microsoft.com/en-us/windows/security/information-protection/windows-information-protection/crea>

NEW QUESTION 239

- (Exam Topic 1)

You need to sign in as LocalAdmin on Computer11. What should you do first?

- A. From the LAPS UI tool, view the administrator account password for the computer object of Computer11.
- B. From Local Security Policy, edit the policy password settings on Computer11.
- C. From the LAPS UI tool, reset the administrator account password for the computer object of Computer11.
- D. From Microsoft Intune, edit the policy password settings on Computer11.

Answer: A

Explanation:

References:

<https://technet.microsoft.com/en-us/mt227395.aspx>

NEW QUESTION 244

- (Exam Topic 1)

You need to implement a solution to configure the contractors' computers.

What should you do? To answer, select the appropriate options in the answer area. NOTE: Each correct selection is worth one point.

Tool to use:

▼
Microsoft Deployment Toolkit (MDT)
Windows AutoPilot
Windows Configuration Designer
Windows Deployment Services (WDS)

File type to create:

▼
CAB
PPKG
WIM
XML

- A. Mastered
- B. Not Mastered

Answer: A

Explanation:

References:

<https://docs.microsoft.com/en-us/windows/configuration/provisioning-packages/provisioning-install-icd>

NEW QUESTION 248

- (Exam Topic 1)

You need to ensure that User10 can activate Computer10. What should you do?

- A. Request that a Windows 10 Enterprise license be assigned to User10, and then activate Computer10.
- B. From the Microsoft Deployment Toolkit (MDT), add a Volume License Key to a task sequence, and then redeploy Computer10.
- C. From System Properties on Computer10, enter a Volume License Key, and then activate Computer10.
- D. Request that User10 perform a local AutoPilot Reset on Computer10, and then activate Computer10.

Answer: D

Explanation:

References:

<https://docs.microsoft.com/en-us/windows/deployment/windows-autopilot/windows-autopilot-requirements-lice>

NEW QUESTION 253

- (Exam Topic 1)

You need to reduce the amount of time it takes to restart Application1 when the application crashes. What should you include in the solution? To answer, select the appropriate options in the answer area. NOTE: Each correct selection is worth one point.

Answer Area

Tool to use:

▼
Event Viewer
Performance Monitor
Windows Memory Diagnostic
Windows Performance Analyzer

Task to perform:

▼
Create a subscription
Attach a task to an event
Enable an event trace provider
Create an alert

- A. Mastered
- B. Not Mastered

Answer: A

Explanation:

Reference:

<https://www.howto-connect.com/how-to-attach-a-task-to-this-event-in-event-viewer-in-windows-10/>

NEW QUESTION 257

- (Exam Topic 1)

You need to recommend a solution to configure the employee VPN connections. What should you include in the recommendation?

- A. Remote Access Management Console
- B. Group Policy Management Console (GPMC)
- C. Connection Manager Administration Kit (CMAC)
- D. Microsoft Intune

Answer: D

Explanation:

References:

<https://docs.microsoft.com/en-us/windows-server/remote/remote-access/vpn/always-on-vpn/deploy/vpn-deploy>

NEW QUESTION 260

- (Exam Topic 1)

An employee reports that she must perform a BitLocker recovery on her laptop. The employee does not have her BitLocker recovery key but does have a Windows 10 desktop computer.

What should you instruct the employee to do from the desktop computer?

- A. Run the manage-bde.exe –status command
- B. From BitLocker Recovery Password Viewer, view the computer object of the laptop
- C. Go to <https://account.activedirectory.windowsazure.com> and view the user account profile
- D. Run the Enable-BitLockerAutoUnlock cmdlet

Answer: C

Explanation:

References:

<https://cedonpartners.com/blog/storing-recovering-bitlocker-keys-azure-active-directory/>

NEW QUESTION 262

- (Exam Topic 4)

You have a computer named Computer1. Computer1 runs Windows 10 Pro. Computer1 is experiencing connectivity issues.

You need to view the IP addresses of any remote computer that Computer1 has an active TCP connection to. Should you do?

- A. In Windows Administrative Tools, open Performance Monitor
- B. In the Control Panel, open Network and Internet Then select Network and Sharing Center
- C. In Windows Administrative Tools, open Resource Monitor
- D. In the Setting ap
- E. open Update and Security Then open Windows Security and select Firewall and Network protection

Answer: C

NEW QUESTION 264

- (Exam Topic 4)

You are troubleshooting a Windows 10 device that fails to install updates from Windows Update. You discover that some files in the component store are corrupt.

You need to resolve the issue to ensure that you can install the updates. Which command should you run?

- A. chkdsk /c c:
- B. Dism /Online /Cleanup-Image /RestoreHealth
- C. Dism /Online /Cleanup-Image /StartComponentCleanup
- D. chknfts /c c:

Answer: B

NEW QUESTION 266

- (Exam Topic 4)

Your network an Active Directory domain named adatum.com. The domain contains 50 computers that runs Windows 8.1. The computer has locally installed desktop application that are compatible with Windows 10.

You need to upgrade the computers to windows 10, The solution must preserver the locally installed desktop applications.

Solution. You use System image manager (Windows SIM) to create an answer file. You use Windows Deployment Service (WDS) to add an install image. You start each computer by using PXE, and then install the image.

Does this meet the goal?

- A. Yes
- B. No

Answer: A

NEW QUESTION 269

- (Exam Topic 4)

You have a computer named Computer1 that runs Windows 10.

On Computer1, you create the local users shown in the following table.

Name	Member of
User1	Users
User2	Users, Guests
User3	Power Users, Guest
User4	Guests, Users, Administrators
User5	Users, Distributed COM Users

Which three user profiles will persist after each user signs out? Each correct answer presents part of the solution.

NOTE: Each correct selection is worth one point.

- A. User1
- B. User2
- C. User3
- D. User4
- E. User5

Answer: ADE

NEW QUESTION 270

- (Exam Topic 4)

Note: This question is part of a series of questions that present the same scenario. Each question in the series contains a unique solution that might meet the stated goals. Some question sets might have more than one correct solution, while others might not have a correct solution.

After you answer a question in this section, you will NOT be able to return to it. As a result, these questions will not appear in the review screen.

You deploy Windows 10 to a computer named Computer1.

Computer1 contains a folder named C:\Folder1. Folder1 contains multiple documents.

You need to ensure that you can recover the files in Folder1 by using the Previous Versions tab. Solution: You enable File History and add Folder1 in the Documents library.

Does this meet the goal?

- A. Yes
- B. No

Answer: A

Explanation:

Reference:

<https://support.microsoft.com/en-za/help/17128/windows-8-file-history>

NEW QUESTION 271

- (Exam Topic 4)

Note: This question is part of a series of questions that present the same scenario. Each question in the series contains a unique solution that might meet the stated goals. Some question sets might have more than one correct solution, while others might not have a correct solution.

After you answer a question in this section, you will NOT be able to return to it. As a result, these questions will not appear in the review screen.

You have a laptop named Computer1 that runs Windows 10.

When in range, Computer1 connects automatically to a Wi-Fi network named Wireless1. You need to prevent Computer1 from automatically connecting to Wireless1.

Solution: From the Settings app, you modify the properties of the Wireless1 known Wi-Fi network. Does this meet the goal?

- A. Yes
- B. No

Answer: A

Explanation:

Removing Wireless1 as a known Wi-Fi network on Computer1 will prevent it from automatically connecting. Note: You can also type netsh wlan show profiles in the Command Prompt to manage and delete wireless network profiles.

References:

<https://kb.netgear.com/29889/How-to-delete-a-wireless-network-profile-in-Windows-10>

NEW QUESTION 273

- (Exam Topic 4)

You have a computer that runs Windows 10 and has BitLocker Drive Encryption (BitLocker) enabled on all volumes.

You start the computer from Windows Recovery Environment (WinRE). You need to read the data on the system drive.

What should you do?

- A. Run cipher.exe and specify the /rekey parameter
- B. Run cipher.exe and specify the /adduser parameter
- C. Run manage-bde.exe and specify the -off parameter
- D. Run manage-bde.exe and specify the -unlock parameter

Answer: D

Explanation:

<https://www.repairwin.com/how-to-disable-bitlocker-in-windows-recovery-environment-winre/>

NEW QUESTION 274

- (Exam Topic 4)

You have a computer named Computer1 that runs Windows 10. Computer1 is in a workgroup. Computer1 contains the local users shown in the following table.

Name	Member of
User1	Group1, Group2
User2	Group1

You create a folder named Folder1 that has the permissions shown in the following table.

Principal	Access	Inherited from	Applies to
Group2	Deny Write	None	This folder, subfolders, and files
Group1	Allow Full control	None	This folder, subfolders, and files
Administrators	Allow Full control	None	This folder, subfolders, and files

You create a file named File1.txt in Folder1 and allow Group2 Full control permissions to File1.txt. For each of the following statements, select Yes if the statement is true. Otherwise, select No. NOTE: Each correct selection is worth one point.

Statements	Yes	No
User1 can create a new file in Folder1	<input type="radio"/>	<input type="radio"/>
User1 can save changes to File1.txt	<input type="radio"/>	<input type="radio"/>
User2 can view the content of File1.txt	<input type="radio"/>	<input type="radio"/>

- A. Mastered
- B. Not Mastered

Answer: A

Explanation:

References:

<https://www.dell.com/support/article/za/en/zadhs1/sln156352/understanding-file-and-folder-permissions-in-win>

NEW QUESTION 276

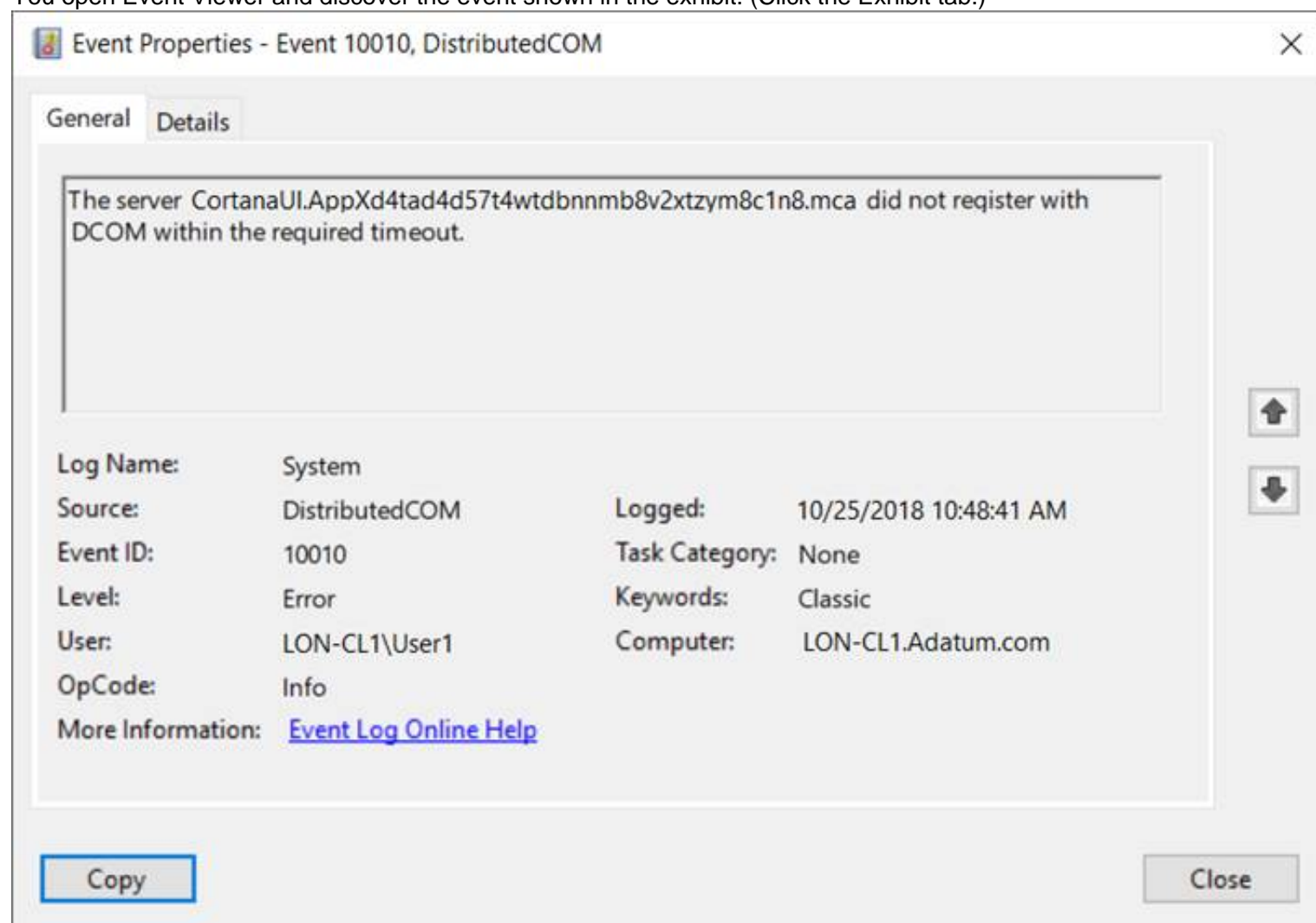
- (Exam Topic 4)

You have a computer named LON-CL1.Adatum.com that runs Windows 10.

From Event Viewer, you create a custom view named View1 that has the following filter:

- > User: User1
- > Logged: Any time
- > Event logs: System
- > Computer: LON-CL1
- > Event IDs: 10000 – 11000
- > Event level: Error, Verbose

You open Event Viewer and discover the event shown in the exhibit. (Click the Exhibit tab.)



The event does not appear in View1.

You need to ensure that the event appears in View1. What should you do?

- A. Add a Task Category setting to the filter.
- B. Add the computer account to the Event Log Readers group.
- C. Create an event subscription.
- D. Modify the Computer setting in the filter.

Answer: A

Explanation:

References:

<https://www.techrepublic.com/article/how-to-use-custom-views-in-windows-10s-event-viewer/>

NEW QUESTION 281

- (Exam Topic 4)

You have a computer that runs Windows 11 and hosts a Hyper-V virtual machine named VMI. You create the disks shown in the following table.

Name	Format	Type	Parent
Base1	VHD	Fixed size	<i>Not applicable</i>
Base2	VHDX	Fixed size	<i>Not applicable</i>
Disk1	VHD	Dynamically expanding	<i>Not applicable</i>
Disk2	VHD	Differencing	Base1.vhd
Disk3	VHDX	Dynamically expanding	<i>Not applicable</i>
Disk4	VHDX	Differencing	Base2.vhdx

You add Disk1, Disk2, Disk3, and Disk4 to a SCSI controller attached to VMI. You need to identify the following:

Which disks will increase in size automatically when files are copied to the disks. Which disks can be manually increased in size while VMI is running.

What should you identify? To answer, select the appropriate options in the answer area.

Disks that will increase in size automatically:

Base1 and Disk2 only
Base2 and Disk4 only
Disk1 and Disk3 only
Disk3 and Disk4 only
Base2, Disk3, and Disk4 only
Disk1, Disk2, Disk3, and Disk4

Disks that can be manually increased in size while VM1 is running:

Base1 and Disk2 only
Base2 and Disk4 only
Disk1 and Disk3 only
Disk3 and Disk4 only
Base2, Disk3, and Disk4 only
Disk1, Disk2, Disk3, and Disk4

- A. Mastered
B. Not Mastered

Answer: A

Explanation:

Graphical user interface, text, application, Word, website Description automatically generated

NEW QUESTION 282

- (Exam Topic 4)

Your network contains an Active Directory domain that contains the objects shown in the following table.

Name	Type	Member of
User1	User	Group1
User2	User	Group2
Group1	Global group	None
Group2	Domain local group	None
Computer1	Computer	Group1
Computer2	Computer	Group1

Computer1 contains the shared folders shown in the following table.

Name	NTFS permission	Share permission	Folder enumeration mode
Share1	Group1: Write	Group1: Full control	Access-based
Share2\$	Group2: Full control	Group2: Read	Unrestricted

The computers have the network configurations shown in the following table.

Name	Network Discovery	Windows Defender Firewall
Computer1	On	Incoming connections: Block all connections to apps that are not on the list of allowed apps
Computer2	Off	Incoming connections: Block all connections to apps that are not on the list of allowed apps

For each of the following statements, select Yes if the statement is true. Otherwise, select No.

NOTE: Each correct selection is worth one point.

Statements	Yes	No
Share1 is listed if User1 connects to \\Computer1 from Computer2.	<input type="radio"/>	<input type="radio"/>
Share1 is listed if User2 connects to \\Computer1 from Computer2.	<input type="radio"/>	<input type="radio"/>
Share2\$ is listed if User2 connects to \\Computer1 from Computer2.	<input type="radio"/>	<input type="radio"/>

- A. Mastered
B. Not Mastered

Answer: A

Explanation:

Box 1: Yes

User1 is in Group1 which has permission to access the share so the share will be visible. Box 2: No

User2 is in Group2 which does not have permission to access Share1. Access-based enumeration is enabled so Share1 will not be listed as User2 does not have permission to access it.

Box 3: No
 Share2\$ is a hidden share (dollar sign appended) so the share will never be listed.

NEW QUESTION 284

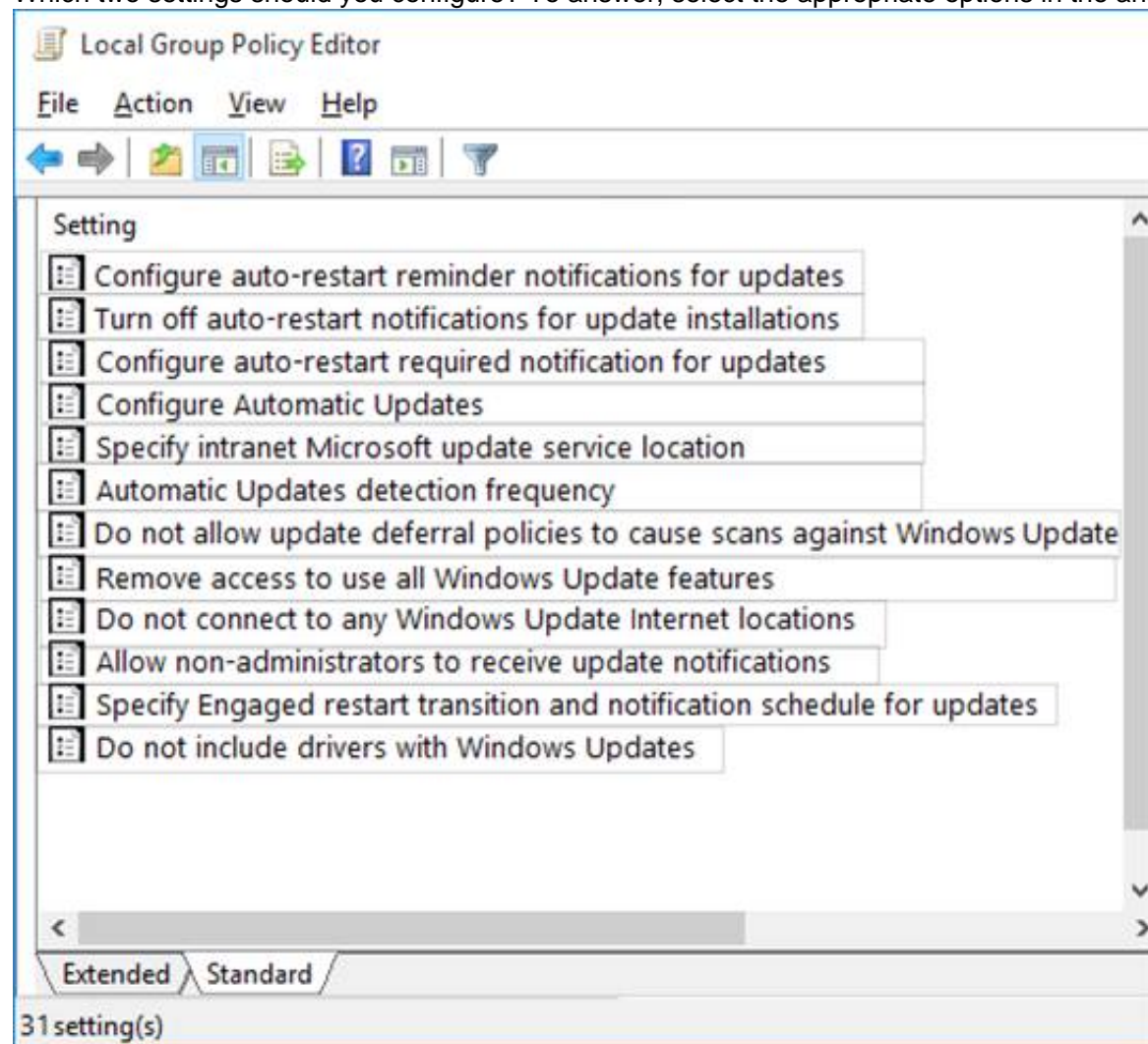
- (Exam Topic 4)

You have 10 computers that run Windows 10.

You have a Windows Server Update Services (WSUS) server.

You need to configure the computers to install updates from WSUS.

Which two settings should you configure? To answer, select the appropriate options in the answer area. NOTE: Each correct selection is worth one point.



- A. Mastered
- B. Not Mastered

Answer: A

Explanation:

References:

<https://docs.microsoft.com/en-us/windows/deployment/update/waas-manage-updates-wsus#configure-automatic>

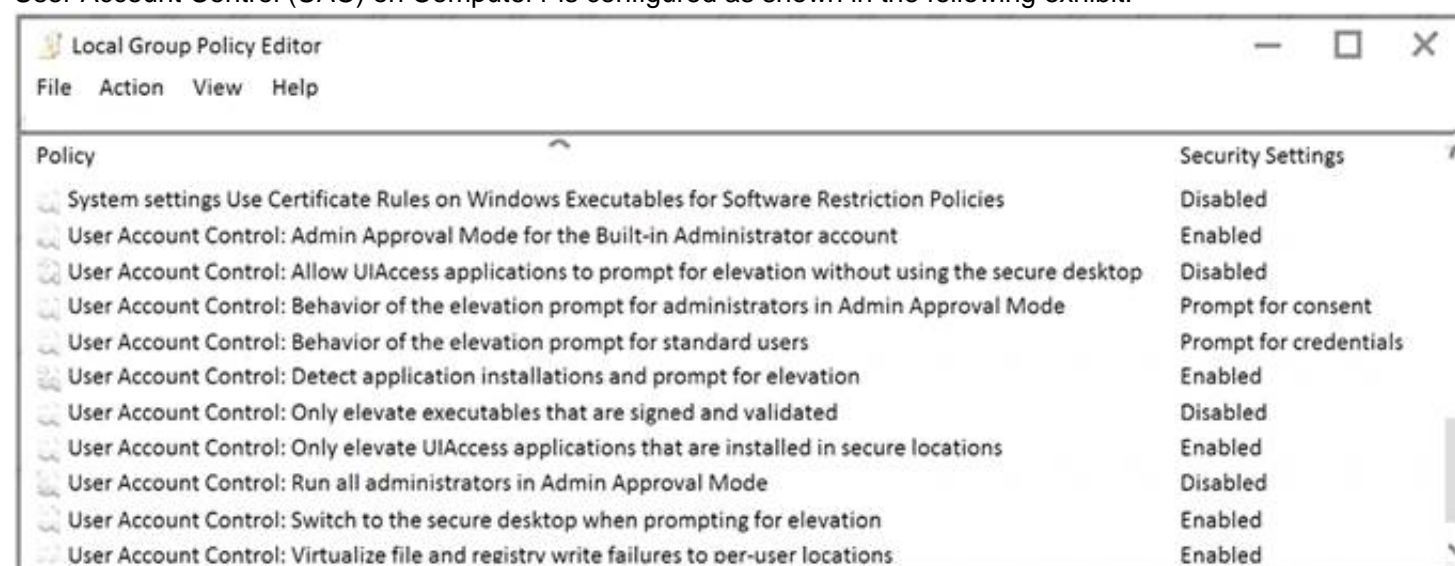
NEW QUESTION 288

- (Exam Topic 4)

You have a workgroup computer named Computer1 that runs Windows 10 and has the users shown in the following table.

Name	Member of
Administrator	Administrators
User1	Administrators
User2	Users

User Account Control (UAC) on Computer1 is configured as shown in the following exhibit.



For each of the following statements, select Yes if the statement is true. Otherwise, select No.
NOTE: Each correct selection is worth one point.

Statements	Yes	No
When Administrator opens a command prompt by using the Run as administrator option, the user will be prompted for consent.	<input type="radio"/>	<input type="radio"/>
When User1 opens a command prompt by using the Run as administrator option, the user will be prompted for consent.	<input type="radio"/>	<input type="radio"/>
When User2 opens a command prompt by using the Run as administrator option, the user will be prompted for credentials.	<input type="radio"/>	<input type="radio"/>

- A. Mastered
- B. Not Mastered

Answer: A

Explanation:

Box 1: Yes
User Account Control: Behavior of the elevation prompt for administrators in Admin Approval Mode is set to Prompt for consent When an operation requires elevation of privilege, the user is prompted to select either Permit or Deny. If the user selects Permit, the operation continues with the user's highest available privilege.

Box 2: Yes
User1 is a member of Administrators group.
User Account Control: Behavior of the elevation prompt for administrators in Admin Approval Mode is set to Prompt for consent When an operation requires elevation of privilege, the user is prompted to select either Permit or Deny. If the user selects Permit, the operation continues with the user's highest available privilege.

Box 3: Yes
User Account Control: Behavior of the elevation prompt for standard users is set to Prompt for credentials (Default) When an operation requires elevation of privilege, the user is prompted to enter an administrative user name and password. If the user enters valid credentials, the operation continues with the applicable privilege.

References:
<https://docs.microsoft.com/en-us/windows/security/identity-protection/user-account-control/user-account-contro>

NEW QUESTION 293

- (Exam Topic 4)
Your network contains the segments shown in the following table.

Name	IP address space	Covered by DHCP	Next available IP address
Segment1	172.16.0.0/24	Yes	172.16.0.58
Segment2	192.168.1.0/24	No	Not applicable

You have a computer that runs Windows 10.
The network interface of the computer is configured as shown in the exhibit. (Click the Exhibit tab.)

You need to identify which IP address the computer will have on the network when the computer connects to the segments. Which IP address should you identify for each segment? To answer, select the appropriate options in the answer area.
 NOTE: Each correct selection is worth one point.

Segment1: ▼

172.16.0.10
172.16.0.58
An address that starts with 169.254

Segment2: ▼

172.16.0.10
172.16.0.58
An address that starts with 169.254
An address that starts with 192.168.1

- A. Mastered
- B. Not Mastered

Answer: A

Explanation:

Segment1: ▼

172.16.0.10
172.16.0.58
An address that starts with 169.254

Segment2: ▼

172.16.0.10
172.16.0.58
An address that starts with 169.254
An address that starts with 192.168.1

NEW QUESTION 295

- (Exam Topic 4)

You have a computer that runs Windows 10. The computer contains two local user accounts named User1 and User2. User2 is a member of the local Administrators group.

User1 performs the actions shown in the following table.

Time	Name	Action
9:00 AM	C:\Users\User1\Documents\File1.docx	Create a file.
9:01 AM	D:\Folder1\File2.txt	Create a file.
10:10 AM	C:\Users\User1\Documents\File1.docx	Save the file.
10:14 AM	D:\Folder1\File2.txt	Save the file.
10:19 AM	D:\Folder1\File2.txt	Save the file.
10:25 AM	D:\Folder1\File2.txt	Save the file.

User2 performs the actions shown in the following table.

Time	Action
9:49 AM	Sign in.
9:50 AM	Add D:\Folder1 to the Documents library.
10:00 AM	Turn on File History and configure File History to save copies of files every 20 minutes.
10:05 AM	Create a restore point.
10:06 AM	Sign out.

For each of the following statements, select Yes if the statement is true. Otherwise, select No.

NOTE: Each correct selection is worth one point.

Statements	Yes	No
User1 can use File History to restore File1.docx to the contents contained in the file at 10:05 AM.	<input type="radio"/>	<input type="radio"/>
User1 can use File History to restore File2.txt to the contents contained in the file at 10:15 AM.	<input type="radio"/>	<input type="radio"/>
User1 can use File History to restore File2.txt to the contents contained in the file at 10:20 AM.	<input type="radio"/>	<input type="radio"/>

- A. Mastered
- B. Not Mastered

Answer: A

Explanation:

Graphical user interface, text, application Description automatically generated

NEW QUESTION 298

- (Exam Topic 4)

You need to ensure that User1 can add a third-party driver package for a printer to the driver store of the computer. The solution must use the principle of the least privilege.

To which local group should you add User 1, and what should User1 run? To answer, select the appropriate options in the answer area.

NOTE: Each correct selection is worth one point.

Group:

Run:

- A. Mastered
- B. Not Mastered

Answer: A

Explanation:

Graphical user interface, text, application Description automatically generated

NEW QUESTION 302

- (Exam Topic 4)

You install Windows 10 Pro on a computer named CLIENT1.

You need to ensure that all per-user services are disabled on CLIENT1. The solution must minimize administrative effort.

What should you use?

- A. a Group Policy administrative template
- B. Device Manager
- C. Task Manager
- D. Group Policy preferences

Answer: D

Explanation:

References:

<https://docs.microsoft.com/en-us/windows/application-management/per-user-services-in-windows>

NEW QUESTION 306

- (Exam Topic 4)

You have a computer named Computer1 that runs Windows 10. Computer1 is joined to an Active Directory domain named adatum.com. The domain contains two groups named Group1 and Group2.

Computer1 contains a folder named C:\Folder1 that has the file permissions shown in the following table.

Group	Permission
Administrators	Full control
Group1	Read

You need to share C:\Folder1. The solution must ensure that the members of Group2 can access all the files in the share.

What should you do?

- A. From File Explorer, use Network File and Folder Sharin
- B. Assign the Read permission to Group2.
- C. From File Explorer, use Advanced Sharin
- D. Assign the Read share permission to Group2.
- E. From Control Panel, use Advanced sharing setting
- F. Configure file and printer sharing for the network profile of the domain.
- G. At a command prompt, run the nee share Share=C:\Folder1 /granc:adacum\group2, read command.

Answer: D

Explanation:

Reference:

<https://techgenix.com/net-share-command-30/>

NEW QUESTION 310

- (Exam Topic 4)

You have a computer named Computer1 that runs Windows 10 and has the users shown in the following table.

Name	Member of
User1	Users, Group1
User2	Administrators

Computer1 contains the folders shown in the following table.

Name	Path	Permission	Share permission
Folder1	D:\Folder1	Administrators: Full control Group1: Read	Group1: Full control
Folder2	E:\Folder2	Administrators: Full control	None

You move Folder1 into Folder2.

For each of the following statements, select Yes if the statement is true. Otherwise, select No.

NOTE: Each correct selection is worth one point.

Statements	Yes	No
User1 can connect to Folder1 by using a path of \\Computer1\Folder1 UNC.	<input type="radio"/>	<input type="radio"/>
User1 can read the content in E:\Folder2\Folder1 when the user signs in to Computer1.	<input type="radio"/>	<input type="radio"/>
User2 can connect to Folder1 by using a path of \\Computer1\E\$\Folder2\Folder1 UNC.	<input type="radio"/>	<input type="radio"/>

- A. Mastered
 B. Not Mastered

Answer: A

Explanation:

Box 1: No

If you move a shared folder, the share will no longer work.

Box 2: No

Folder1 will inherit the permissions of Folder2. User1 does not have permission to access Folder2. Box 3: Yes

User2 is a member of the Administrators group so he can access the administrative share \\Computer1\E\$. User2 has Full Control permission to Folder2 so he can access \\Computer1\E\$\Folder2.

Folder1 will inherit the permissions of Folder2 so User2 can access \\Computer1\E\$\Folder2\Folder1.

NEW QUESTION 311

- (Exam Topic 4)

You have a computer named Computer1 that runs Windows 10. Computer1 has a folder named C:\Folder1.

You need to meet the following requirements:

- > Log users that access C:\Folder1.
- > Log users that modify and delete files in C:\Folder1. Which two actions should you perform?

- A. From the properties of C:\Folder1, configure the Auditing settings.
 B. From the properties of C:\Folder1, select the Encryption contents to secure data option.
 C. From the Audit Policy in the local Group Policy, configure Audit directory service access.
 D. From the Audit Policy in the local Group Policy, you configure Audit object access.
 E. From the Audit Policy in the local Group Policy, you configure Audit system events.

Answer: AD

Explanation:

Files and folders are objects and are audited through object access. Reference:

https://www.netwrix.com/how_to_detect_who_changed_file_or_folder_owner.html

NEW QUESTION 314

- (Exam Topic 4)

Note: This question is part of a series of questions that present the same scenario. Each question in the series contains a unique solution that might meet the stated goals. Some question sets might have more than one correct solution, while others might not have a correct solution.

After you answer a question in this section, you will NOT be able to return to it. As a result, these questions will not appear in the review screen.

You have two computers named Computer1 and Computer2 that run Windows 10.

You have an Azure Active Directory (Azure AD) user account named admin@contoso.com that is in the local Administrators group on each computer.

You sign in to Computer1 by using admin@contoso.com.

You need to ensure that you can use Event Viewer on Computer1 to connect to the event logs on Computer2. Solution: On Computer2, you enable the Remote Event Log Management inbound rule from Windows Defender Firewall.

Does this meet the goal?

- A. Yes
 B. No

Answer: A

Explanation:

Reference:

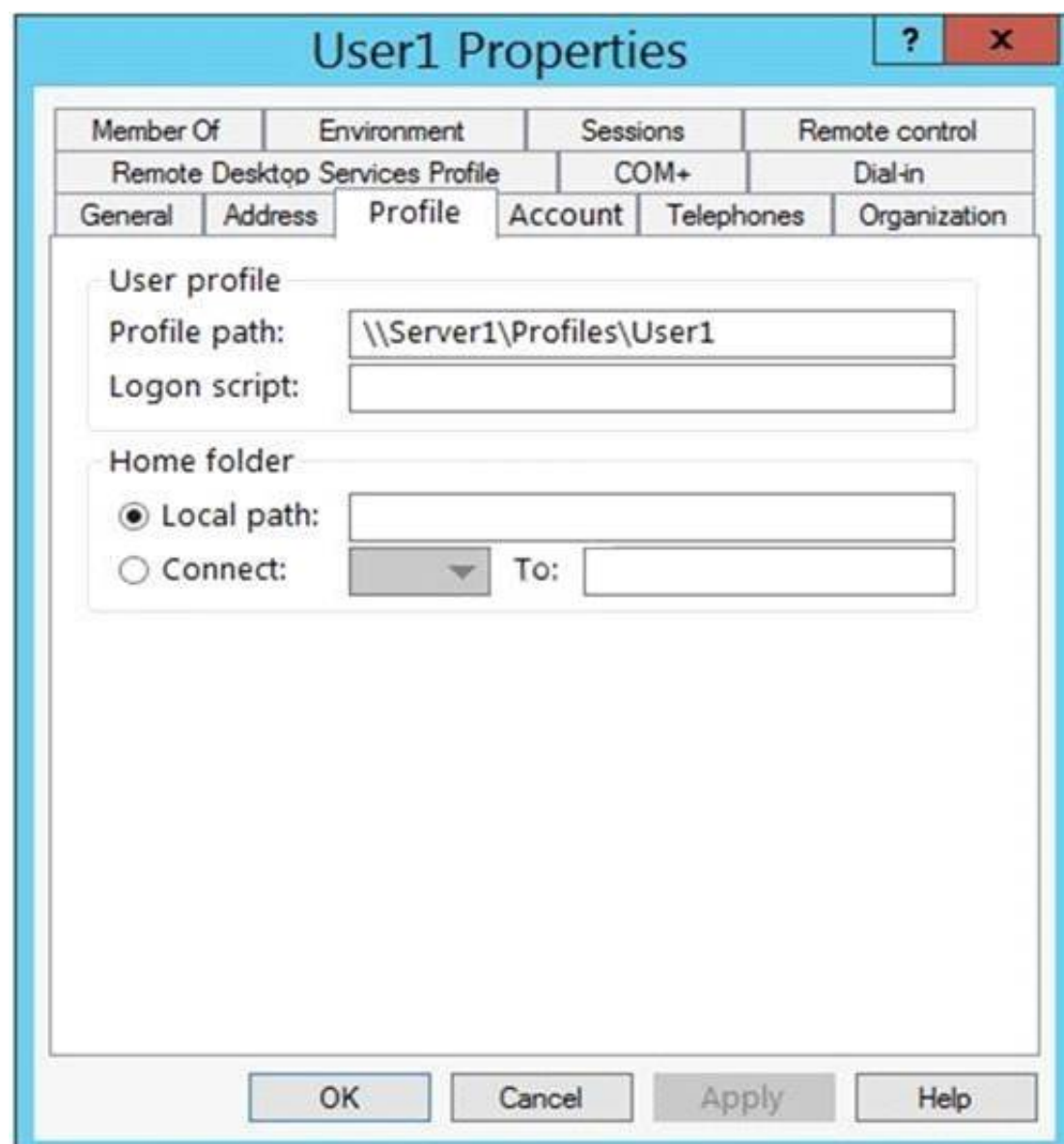
<https://docs.microsoft.com/en-us/previous-versions/windows/it-pro/windows-server-2008-R2-and-2008/cc76643>

NEW QUESTION 319

- (Exam Topic 4)

Your network contains an on-premises Active Directory forest named contoso.com. The forest contains a user named User1 and two computers named Computer1 and Computer2 that run Windows 10.

User1 is configured as shown in the following exhibit.



You rename file \\Server1\Profiles\User1.V6\NTUSER.DAT as NTUSER.MAN.

For each of the following statements, select Yes if the statement is true. Otherwise, select No. NOTE: Each correct selection is worth one point.

Statements

Yes No

On Computer1, if User1 adds a shortcut to the desktop, the shortcut will appear when the user signs in to Computer2.

☐ ☐

On Computer1, if User1 modifies the background, and then signs out, the user will see the modified background when signing back in to Computer1.

☐ ☐

On Computer1, if User1 modifies the background, and then signs out, the user will see the modified background when signing in to Computer2.

☐ ☐

- A. Mastered
- B. Not Mastered

Answer: A

Explanation:

Statements

Yes No

On Computer1, if User1 adds a shortcut to the desktop, the shortcut will appear when the user signs in to Computer2.

☐ ☒

On Computer1, if User1 modifies the background, and then signs out, the user will see the modified background when signing back in to Computer1.

☒ ☐

On Computer1, if User1 modifies the background, and then signs out, the user will see the modified background when signing in to Computer2.

☐ ☒

NEW QUESTION 322

- (Exam Topic 4)

You deploy 100 computers that run Windows 10. Each computer has a cellular connection and a Wi-Fi connection. You need to prevent the computers from using the cellular connection unless a user manually connects to the cellular network. What should you do?

- A. Set the Use cellular instead of Wi-Fi setting for the cellular connection to Never

- B. Run the netsh wlan set hostednetwork mode=disallow command
- C. Clear the Let Windows manage this connection check box for the cellular connection
- D. Select the Let Windows manage this connection check box for the Wi-Fi connection

Answer: C

Explanation:

References:

<https://support.microsoft.com/en-za/help/10739/windows-10-cellular-settings>

NEW QUESTION 327

- (Exam Topic 4)

Your network contains an Active Directory domain. The domain contains a group named Group1.

All the computers in the domain run Windows 10. Each computer contains a folder named C:\Documents that has the default NTFS permissions set.

You add a folder named C:\Documents\Templates to each computer.

_ You need to configure the NTFS permissions to meet the following requirements: All domain users must be able to open the files in the Templates folder.

_ Only the members of Group1 must be allowed to edit the files in the Templates folder.

How should you configure the NTFS settings on the Templates folder? To answer, select the appropriate options in the answer area.

NOTE: Each correct selection is worth one point.

Inheritance: ▼

Enable inheritance.
Disable inheritance and remove permissions.
Disable inheritance and copy explicit permissions.

Permissions for domain users: ▼

Allow Read&Execute
Deny Read&Execute
Allow Modify
Deny Modify

Permissions for Group1: ▼

Allow Read&Execute
Deny Read&Execute
Allow Modify
Deny Modify

- A. Mastered
- B. Not Mastered

Answer: A

Explanation:

Inheritance: ▼

Enable inheritance.
Disable inheritance and remove permissions.
Disable inheritance and copy explicit permissions.

Permissions for domain users: ▼

Allow Read&Execute
Deny Read&Execute
Allow Modify
Deny Modify

Permissions for Group1: ▼

Allow Read&Execute
Deny Read&Execute
Allow Modify
Deny Modify

NEW QUESTION 332

- (Exam Topic 4)

You have a computer that runs Windows 10 Home.

You need to upgrade the computer to Windows 10 Enterprise as quickly as possible. The solution must retain the user settings.

What should you do first?

- A. Run the scansce command.
- B. Perform an in-place upgrade to Windows Pro.
- C. Install the latest feature updates.
- D. Run the sysprep command.

Answer: B

Explanation:

References:

<https://docs.microsoft.com/en-us/windows/deployment/upgrade/windows-10-upgrade-paths>

NEW QUESTION 333

- (Exam Topic 4)

Your company is not connected to the internet. The company purchases several new computers with Windows 10 Pro for its users.

None of the new computers are activated.

You need to activate the computers without connecting the network to the Internet.

What should you do?

- A. Make use of the Volume Activation Management Tool (VAMT).
- B. Make use of the Key Management Service (KMS).
- C. Make use of the Windows Process Activation Service.
- D. Run the Get-WmiObject -query cmdlet.

Answer: B

Explanation:

You can configure one of the computers as a Key Management Service (KMS) host and activate the KMS host by phone. The other computers in the isolated network can then activate using the KMS host.

Installing a KMS host key on a computer running Windows 10 allows you to activate other computers running Windows 10 against this KMS host and earlier versions of the client operating system, such as Windows 8.1 or Windows 7. Clients locate the KMS server by using resource records in DNS, so some configuration of DNS may be required. This scenario can be beneficial if your organization uses volume activation for clients and MAK-based activation for a smaller number of servers. To enable KMS functionality, a KMS key is installed on a KMS host; then, the host is activated over the Internet or by phone using Microsoft's activation services.

Reference:

<https://docs.microsoft.com/en-us/windows/deployment/volume-activation/activate-using-key-management-servi>

NEW QUESTION 337

- (Exam Topic 4)

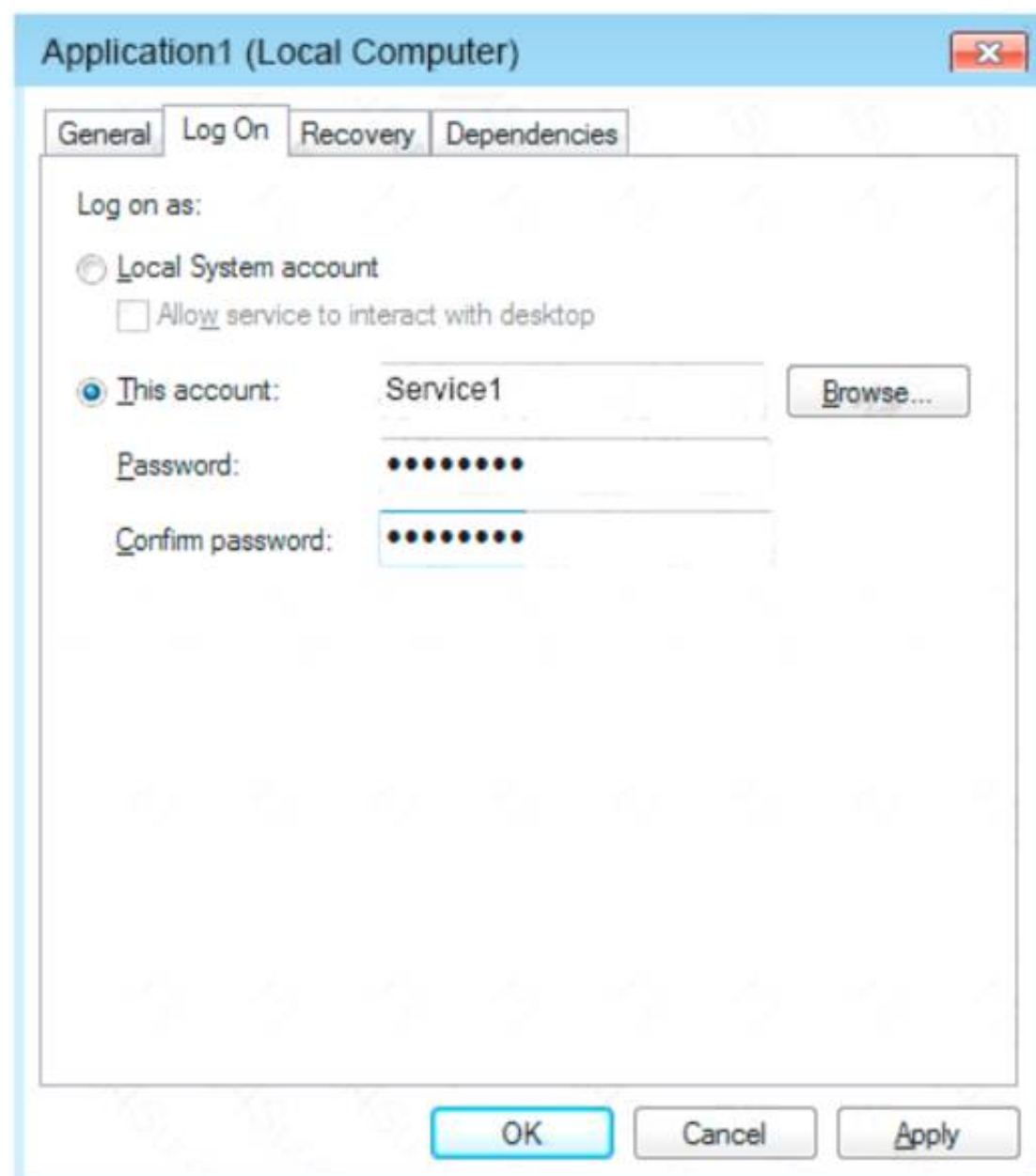
Note: This question is part of a series of questions that present the same scenario. Each question in the series contains a unique solution that might meet the stated goals. Some question sets might have more

than one correct solution, while others might not have a correct solution.

After you answer a question in this section, you will NOT be able to return to it. As a result, these questions will not appear in the review screen.

You have a computer named Computer1 that runs Windows 10.

A service named Application1 is configured as shown in the exhibit.



You discover that a user used the Service1 account to sign in to Computer1 and deleted some files.

You need to ensure that the identity used by Application1 cannot be used by a user to sign in to the desktop on Computer1. The solution must use the principle of least privilege.

Solution: On Computer1, you assign Service1 the deny log on locally user right. Does this meet the goal?

- A. Yes
- B. No

Answer: A

Explanation:

References:

<https://docs.microsoft.com/en-us/windows/security/threat-protection/security-policy-settings/deny-log-on-locall>

NEW QUESTION 341

- (Exam Topic 4)

You plan to deploy Windows 10 to 100 secure computers.

You need to select a version of Windows 10 that meets the following requirements:

- > Uses Microsoft Edge as the default browser
- > Minimizes the attack surface on the computer
- > Supports joining Microsoft Azure Active Directory (Azure AD)
- > Only allows the installation of applications from the Microsoft Store

What is the best version to achieve the goal? More than one answer choice may achieve the goal. Select the BEST answer.

- A. Windows 10 Pro in S mode
- B. Windows 10 Home in S mode
- C. Windows 10 Pro
- D. Windows 10 Enterprise

Answer: A

Explanation:

References:

Uses Microsoft Edge as the default browser Minimizes the attack surface on the computer Supports joining Microsoft Azure Active Directory (Azure AD) Only allows the installation of applications from the Microsoft Store <https://docs.microsoft.com/es-es/windows/deployment/s-mode>

NEW QUESTION 346

- (Exam Topic 4)

Your network contains an Active Directory domain. The domain contains computers that run Windows 11 as shown in the following table.

Name	IP address	Domain-joined
Computer1	172.16.0.15/24	Yes
Computer2	172.16.0.25/24	Yes
Computer3	172.16.0.160/24	No

You enable File and printer sharing for Computer1 and Computer2. You need to use the ping command to test network connectivity. Which computers can you ping successfully from Computer1 and Computer2? To answer, select the appropriate options in the answer area.
 NOTE: Each correct selection is worth one point.

Answer Area

From Computer1: Computer2 only
 Computer2 only
 Computer3 only
 Computer2 and Computer3

From Computer2: Computer1 only
 Computer1 only
 Computer3 only
 Computer1 and Computer3

- A. Mastered
- B. Not Mastered

Answer: A

Explanation:

Answer Area

From Computer1: Computer2 only
 Computer2 only
 Computer3 only
 Computer2 and Computer3

From Computer2: Computer1 only
 Computer1 only
 Computer3 only
 Computer1 and Computer3

NEW QUESTION 350

- (Exam Topic 4)

Your network contains 500 computers that run Windows 11 and have Delivery Optimization enabled. All the computers contain the following:

- Microsoft 365 apps
- A Microsoft Store app named App1
- A Windows 11 driver named Driver1

What can use Delivery Optimization to download updates?

- A. Driver1 only
- B. Microsoft 365 apps only
- C. Microsoft 365 apps and Driver1 only
- D. Microsoft 365 apps, Driver1, and App1

Answer: D

NEW QUESTION 351

.....

THANKS FOR TRYING THE DEMO OF OUR PRODUCT

Visit Our Site to Purchase the Full Set of Actual MD-100 Exam Questions With Answers.

We Also Provide Practice Exam Software That Simulates Real Exam Environment And Has Many Self-Assessment Features. Order the MD-100 Product From:

<https://www.2passeasy.com/dumps/MD-100/>

Money Back Guarantee

MD-100 Practice Exam Features:

- * MD-100 Questions and Answers Updated Frequently
- * MD-100 Practice Questions Verified by Expert Senior Certified Staff
- * MD-100 Most Realistic Questions that Guarantee you a Pass on Your FirstTry
- * MD-100 Practice Test Questions in Multiple Choice Formats and Updatesfor 1 Year