

## Exam Questions HPE6-A72

Aruba Certified Switching Associate Exam

<https://www.2passeasy.com/dumps/HPE6-A72/>



### NEW QUESTION 1

DRAG DROP

Match the switching term to the correct definition.

Term		Definition
Broadcast Domain		defines the group of devices that are on the same network segment that are capable of receiving and responding to frames destined to FF:FF:FF:FF:FF:FF
Collision Domain		
CSMA/CD		the FIB used by switches matching known-source mac-addresses to the layer one port they are learned on
Forwarding Table		
		the mechanism used by Compute NICs and Switchports operating in half-duplex to detect and recover from frame collisions
		the segment of a network connected by a shared medium, such as a hub, that is affected when two or more frames are sent at the same time

- A. Mastered
- B. Not Mastered

Answer: A

Explanation:

Term		Definition
Broadcast Domain	Broadcast Domain	defines the group of devices that are on the same network segment that are capable of receiving and responding to frames destined to FF:FF:FF:FF:FF:FF
Collision Domain		
CSMA/CD		
Forwarding Table	Forwarding Table	the FIB used by switches matching known-source mac-addresses to the layer one port they are learned on
	CSMA/CD	the mechanism used by Compute NICs and Switchports operating in half-duplex to detect and recover from frame collisions
	Collision Domain	the segment of a network connected by a shared medium, such as a hub, that is affected when two or more frames are sent at the same time

### NEW QUESTION 2

What is the correct description of a Multi- Layer Switch?

- A. a switch with Layer 3 routing capabilities but lacks any Layer 1 features as a consequence
- B. any switch that supports PoE, LLDP-MED and Flow Control
- C. has all the functionality of a Layer 2 switch and most of the functionality of a Layer 3 router
- D. multi-Layer refers specifically to using chassis switches with several line cards over stack port switches

Answer: C

### NEW QUESTION 3

Refer to the exhibit.

```
Core-1# show interface mgmt
Address Mode                : static
Admin State                 : up
Mac Address                 : 90:20:c2:bc:8e:01
IPv4 address/subnet-mask    : 10.1.1.1/24
Default gateway IPv4        : 10.1.1.254
IPv6 address/prefix         :
IPv6 link local address/prefix:
Default gateway IPv6        :
Primary Nameserver          : 10.254.1.21
Secondary Nameserver        :
Core-1# ping 10.1.1.254
connect: Network is unreachable
Core-1#
```

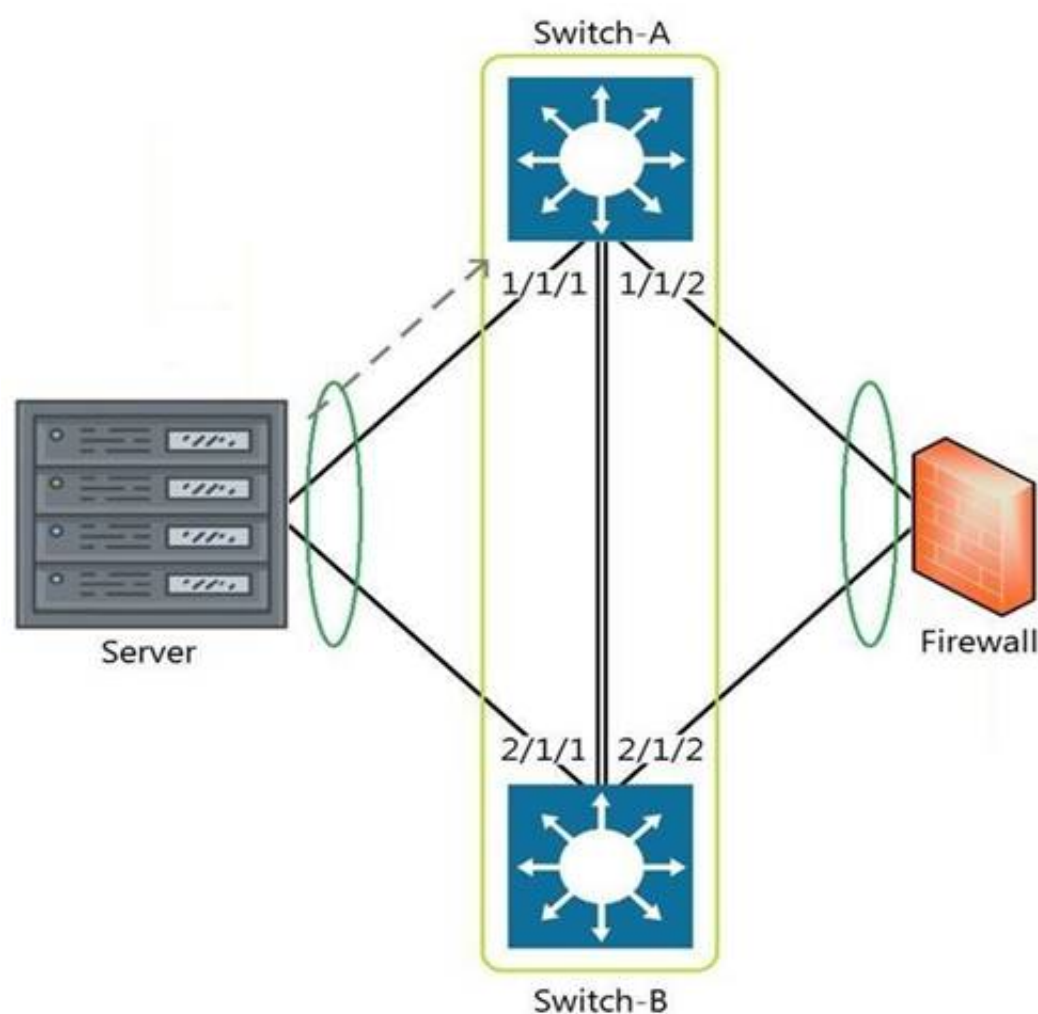
What change on Core-1 will result in a successful ping to 10.1.1.254 from the management interface?

- A. Use the command ping 10.1.1.254 vrf mgmt
- B. Use the command ping 10.1.1.254/24
- C. Change the Core-1 management address to 10.1.1.1/25 first
- D. The destination 10.1.1.254 requires configuring a static route

**Answer: A**

#### NEW QUESTION 4

Refer to the exhibit.



The above scenario shows a packet from the Server destined for the Firewall. Switch-A and Switch-B are bundled as VSF stack. The LAG between the VSF stack and the firewall indicates a hash function to forward the packet on port 2/1/2. Which statement is true regarding how Switch-A will forward the packet?

- A. Switch-A will forward the packet on port 1/1/2. VSF will override the typical LAG hash function used for the physical interface selection.
- B. Switch-A will drop the packet
- C. Multi-Chassis lag to multi-chassis lag is not a supported feature of VSF.
- D. Switch-A will encapsulate the packet using GRE to forward to Switch-B in order for the packet to egress on port 2/1/2 per the hash function.
- E. Switch-A will forward the packet along the VSF link to Switch-B so that it will egress on port 2/1/2 per the hash function.

**Answer: D**

#### NEW QUESTION 5

What are two OSPF attributes within the hello messages that must match to successfully establish neighbor relationships? (Choose two.)

- A. Router ID
- B. Priority
- C. Hello and Dead intervals
- D. Area ID
- E. Process ID

**Answer: CD**



#### NEW QUESTION 6

Your customer has 349 users in a two-story building.  
 What are two benefits of a 2-Tier design? (Choose two.)

- A. Layer 2 and Layer 3 protocols run close to the endpoints to better implement ACL and QoS policy at the edge.
- B. Improved performance by offloading processing from the Access layer to the Core.
- C. Use of layer 2 switches at the access layer can process and route traffic from attached APs.
- D. Support for WAN/MPLS, Internet, and Data Center directly on the Collapsed core.
- E. Provides a more cost effective solution given that no additional switches are required for a third tier.

**Answer:** AE

#### NEW QUESTION 7

What are two primary concerns regarding layer two loops in a redundant topology? (Choose two.)

- A. routing loops
- B. costs associated with upgrading from copper to fiber
- C. multiple frame copies leading to instability of the MAC address table
- D. security issues with a redundant loop indicating to hackers that a back-door exists
- E. broadcast storms

**Answer:** CD

#### NEW QUESTION 8

What is the binary conversion of the hexadecimal value 0x2001?

- A. 0010 0001
- B. 0002 0000 0000 0001
- C. 0011 0000 0000 0001
- D. 0010 0000 0000 0001

**Answer:** D

#### NEW QUESTION 9

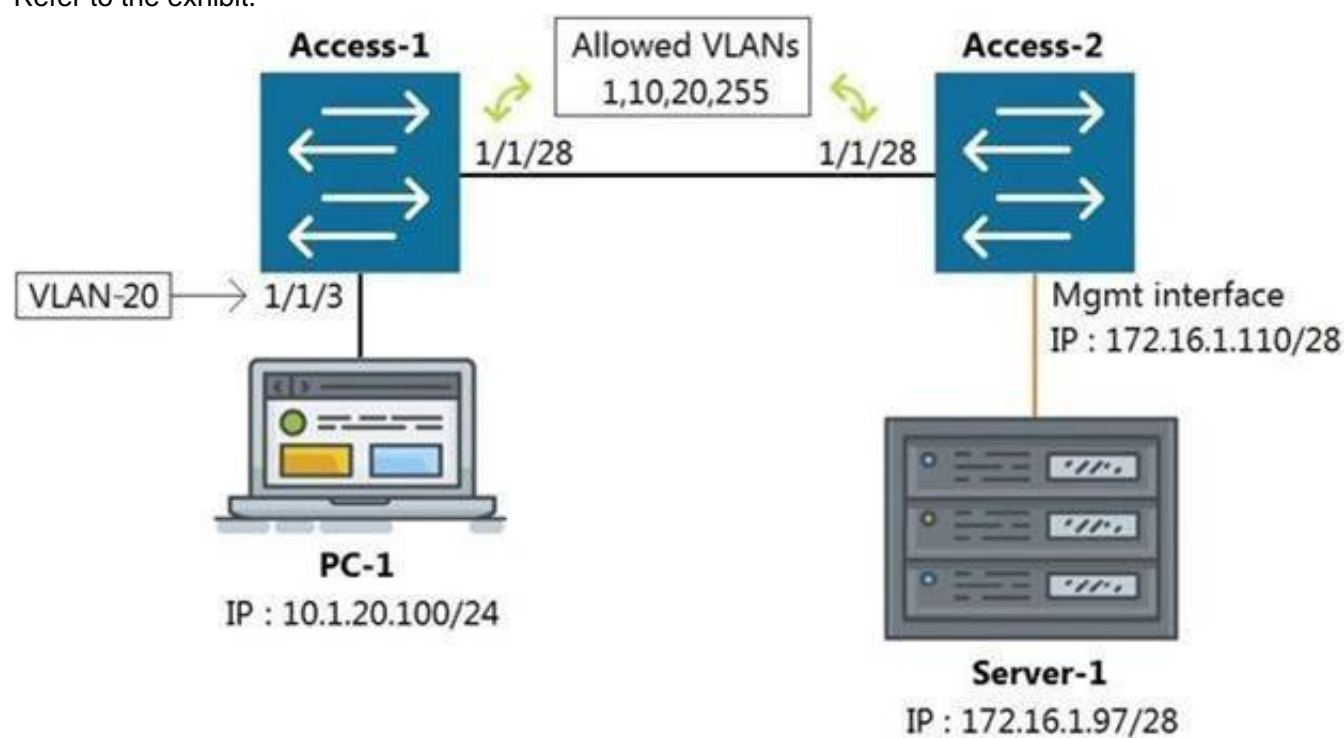
What connectivity commands are available on AOS-CX switches? (Choose two.)

- A. netstatus
- B. traceroute
- C. ping
- D. pathping
- E. tracert

**Answer:** BC

#### NEW QUESTION 10

Refer to the exhibit.



All switches are running Aruba OS-CX. While working in the terminal of Access-2, you are unable to reach Server-1 using SSH. What is the correct command to ping Server-1 from Access-2 to test reachability?

- A. Access-2# ping6 172.16.1.97 vrf mgmt
- B. Access-2# ping 172.16.1.97
- C. Access-2# ping 172.16.1.97 vrf default
- D. Access-2# ping 172.16.1.97 vrf mgmt

**Answer:** D

#### NEW QUESTION 10

Which statement is correct regarding powering an Aruba Access Point?

- A. PoE or PoE+ is only used with Ethernet that is carried over multi-mode fiber cabling.
- B. Using switchports for this reason is unnecessary, because Aruba Access Points typically use an AC to DC power adapter to draw power.
- C. PoE or PoE+ enabled switchports are rarely used given concerns about causing electrical interference, with the data also carried over Ethernet cabling.
- D. Most administrators use PoE or PoE+ enabled switchports to provide both Ethernet connectivity and power to the AP.

Answer: D

#### NEW QUESTION 14

Refer to the exhibit.

```
T11-Access-2# show lldp configuration
```

```
LLDP Global Configuration
```

```
=====
```

```
LLDP Enabled           : Yes
LLDP Transmit Interval : 30
LLDP Hold Time Multiplier : 4
LLDP Transmit Delay Interval : 2
LLDP Reinit Time Interval : 2
```

```
TLVs Advertised
```

```
=====
```

```
Management Address
Port Description
Port VLAN-ID
System Capabilities
System Description
System Name
OUI
```

```
LLDP Port Configuration
```

```
=====
```

PORT	TX-ENABLED	RX-ENABLED
1/1/1	Yes	Yes
1/1/2	Yes	Yes
<--- output omitted --->		
1/1/27	Yes	Yes
1/1/28	Yes	Yes

What configuration is needed in order for "show LLDP configuration" to show this output?

- A. none; LLDP is enabled by default on Aruba switches
- B. configuring LLDP both globally and on the interfaces
- C. enabling LLDP on the interfaces only
- D. configuring LLDP globally only

Answer: A

#### NEW QUESTION 18

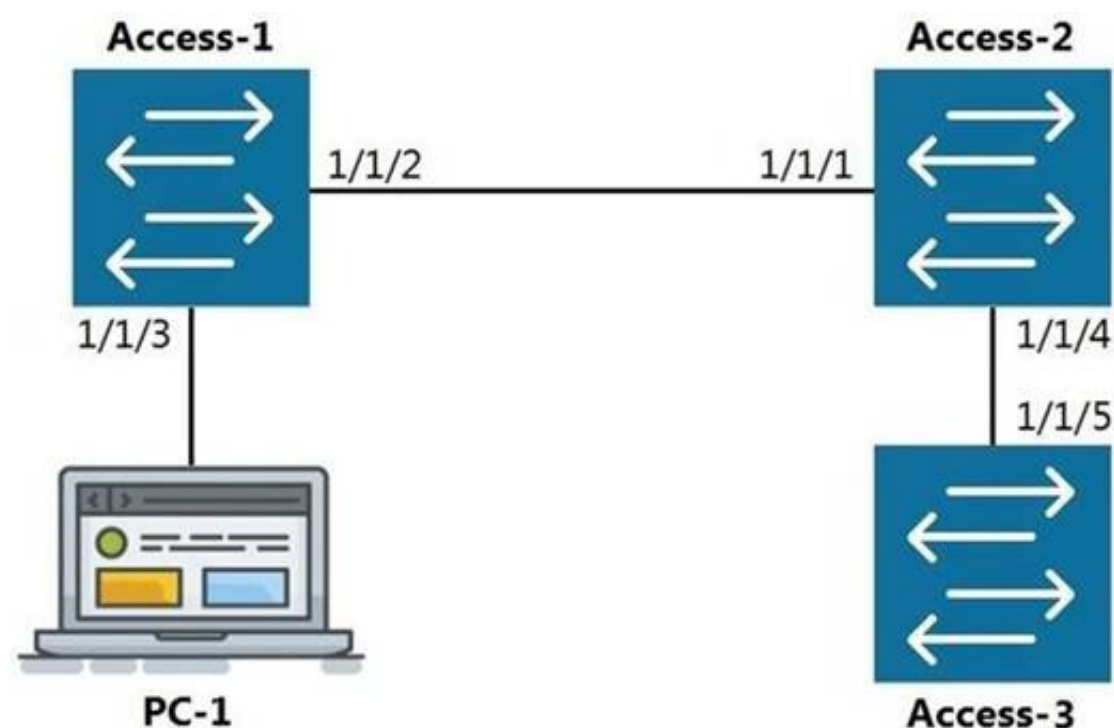
What are the benefits of a 3-Tier design over a 2- Tier? (Choose two.)

- A. Offloading processing from the Core without routing at the Access layer.
- B. Can use lower speed links between Core to Aggregation and Aggregation to Access given the use of an Aggregation layer.
- C. Lowering the cost of a deployment due to needing less switches overall.
- D. Better scalability in a campus with a large number of buildings.
- E. Gaining the flexibility to connect the Data-Center to any Access layer switch.

Answer: AD

#### NEW QUESTION 22

Refer to the exhibit.



LLDP

The command show LLDP neighbor-info gets typed into Access-1. All switches are Aruba OS-CX switches.  
 What is the output of this command?

- A.
- | LOCAL-PORT | CHASSIS-ID        | PORT-ID | PORT-DESC | TTL | SYS-NAME |
|------------|-------------------|---------|-----------|-----|----------|
| 1/1/1      | 90:20:c2:bc:ed:00 | 1/1/2   | 1/1/2     | 120 | Access-2 |
| 1/1/5      | 90:20:c2:bc:ef:00 | 1/1/2   | 1/1/2     | 120 | Access-3 |
- B.
- | LOCAL-PORT | CHASSIS-ID        | PORT-ID | PORT-DESC | TTL | SYS-NAME |
|------------|-------------------|---------|-----------|-----|----------|
| 1/1/1      | 90:20:c2:bc:ed:00 | 1/1/2   | 1/1/2     | 120 | Access-2 |
- C.
- | LOCAL-PORT | CHASSIS-ID        | PORT-ID | PORT-DESC | TTL | SYS-NAME |
|------------|-------------------|---------|-----------|-----|----------|
| 1/1/2      | 90:20:c2:bc:ed:00 | 1/1/1   | 1/1/1     | 120 | Access-2 |
| 1/1/2      | 90:20:c2:bc:ef:00 | 1/1/5   | 1/1/5     | 120 | Access-3 |
- D.
- | LOCAL-PORT | CHASSIS-ID        | PORT-ID | PORT-DESC | TTL | SYS-NAME |
|------------|-------------------|---------|-----------|-----|----------|
| 1/1/2      | 90:20:c2:bc:ed:00 | 1/1/1   | 1/1/1     | 120 | Access-2 |

Answer: D

#### NEW QUESTION 24

Which command will suppress LLDP messages from egressing on a given port while still allowing LLDP to be enabled on the switch?

- A. switch(config-if)# no lldp interface (port) transmit
- B. switch(config-if)# no lldp transmit
- C. switch(config-if)# no lldp receive
- D. switch(config)# no lldp

Answer: B

#### NEW QUESTION 25

What is the process where a compute device converts logical data bits into the correct physical representation depending on the media?

- A. Demodulation
- B. Modulation
- C. Propagation
- D. Encapsulation

Answer: D

#### NEW QUESTION 26

The customer has 778 developers testing computer games on the network.  
 Which two actions resolve Broadcast storms? (Choose two.)



- A. Manually disable the redundant link to immediately resolve the impacted portion of the network.
- B. Utilize Spanning Tree to dynamically disable all redundant links in a segment.
- C. Setting switch ports to half-duplex will resolve Broadcast storms using Carrier Sense Multiple-Access Collision Detection (CSMA/CD).
- D. Enable single Area Open Shortest Path First (OSPF) on all Layer 2 switches, but do not enable routing.
- E. Utilize Spanning Tree to dynamically block Designated ports in addition to Alternate ports.

**Answer:** AB

#### NEW QUESTION 29

Interface 1/1/1 is up  
 Admin state is up  
 Link transitions: 1  
 Description: TO\_PC-1  
 Hardware: Ethernet, MAC Address: 00:11:22:33:44:55  
 MTU 1500  
 Type 1GbT Full-  
 duplex qos  
 trust none  
 Speed 1000 Mb/s  
 Auto-negotiation is on  
 Flow-control: off  
 Error-control: off  
 MDI mode: MDIX  
 VLAN Mode: access  
 Access VLAN: 1111  
 Which command will produce the above output?

- A. show interface vlan 1111
- B. show interface 1/1/1
- C. show interface gigabit 1/1/1
- D. show vlan 1111

**Answer:** B

#### NEW QUESTION 31

Refer to the exhibit.



You are in the process of configuring VSF between Access-1 and Access-2. Access-1 has been configured as the VSF Master. What is a valid configuration for Access-2 to join the VSF stack?

- A. Access-2# configureAccess-2(config)# vsf member 1 Access-2(config)# vsf renumber-to 2 Access-2(vsf-member-1)# link 2 2/1/28 Access-2(vsf-member-1)# exitThis will save the VSF configuration and reboot the switc
- B. Do you want to continue (y/n)? y
- C. Access-2# configureAccess-2(config)# vsf member 2 Access-2(vsf-member-1)# link 2 1/1/28 Access-2(vsf-member-1)# exitThis will save the VSF configuration and reboot the switch
- D. Do you want to continue (y/n)? y
- E. Access-2# configureAccess-2(config)# vsf member 2 Access-2(vsf-member-1)# link 1 1/1/28 Access-2(vsf-member-1)# exitThis will save the VSF configuration and reboot the switch.Do you want to continue (y/n)? y
- F. Access-2# configureAccess-2(config)# vsf member 1 Access-2(vsf-member-1)# link 1 1/1/28 Access-2(vsf-member-1)# exitAccess-2(config)# vsf renumber-to 2This will save the VSF configuration and reboot the switc
- G. Do you want to continue (y/n)? y

**Answer:** C

#### NEW QUESTION 35

DRAG DROP

Match each description to the correct management tool for Aruba AOS-CX.

Select and Place:

### Management Tools

NetEdit
Aruba CX Mobile App

### Answer Area

Management Tool	Description
	can run as an OVA
	requires AOS-CX switches to support HTTPS, SSH, and REST access
	connects to switches via Bluetooth or Wi-Fi
	includes a feature for stacking automation
	supports SNMPv2c to discover third-party devices

- A. Mastered  
 B. Not Mastered

**Answer:** A

**Explanation:**

### Management Tools

NetEdit
Aruba CX Mobile App

### Answer Area

Management Tool	Description
NetEdit	can run as an OVA
NetEdit	requires AOS-CX switches to support HTTPS, SSH, and REST access
Aruba CX Mobile App	connects to switches via Bluetooth or Wi-Fi
Aruba CX Mobile App	includes a feature for stacking automation
NetEdit	supports SNMPv2c to discover third-party devices

### NEW QUESTION 37

DRAG DROP

Match the term to the correct description.

Term	Description
BGP	used for creating backup routes by implementing a higher administrative distance
Floating Static Routes	a distance vector protocol
OSPFv2	an ipv4 link-state routing protocol that runs within an Autonomous System
OSPFv3	used to route traffic between Autonomous Systems
RIPv2	a routing protocol capable of routing IPv6 packets

- A. Mastered  
 B. Not Mastered

**Answer:** A

**Explanation:**



Term		Description
BGP	Floating Static Routes	used for creating backup routes by implementing a higher administrative distance
Floating Static Routes	RIPv2	a distance vector protocol
OSPFv2	OSPFv2	an ipv4 link-state routing protocol that runs within an Autonomous System
OSPFv3	BGP	used to route traffic between Autonomous Systems
RIPv2	OSPFv3	a routing protocol capable of routing IPv6 packets

#### NEW QUESTION 41

Which port or ports should be allowed through a firewall so that an AOS-CX switch can act as an SNMP Agent?

- A. UDP 1812 and UDP 1813
- B. UDP 161
- C. TCP 443
- D. UDP 162

Answer: B

#### NEW QUESTION 43

You have completed a successful VSF stack between two switches.

Without manually assigning a backup switch, what is the expected output when issuing a show vsf command?

- A. T1-6300-A# show vsf  
 <omitted>  

Member	Mac Address	type	Status ID
1	88:3a:30:a3:e5:40	JL660A	Commander
2	88:3a:30:a6:d9:80	JL660A	Secondary
- B. T1-6300-A# show vsf  
 <omitted>  

Member	Mac Address	type	Status ID
1	88:3a:30:a3:e5:40	JL660A	Primary
2	88:3a:30:a6:d9:80	JL660A	Secondary
- C. T1-6300-A# show vsf  
 <omitted>  

Member	Mac Address	type	Status ID
1	88:3a:30:a3:e5:40	JL660A	Master
2	88:3a:30:a6:d9:80	JL660A	Member
- D.

T1-6300-A# show vsf

<omitted>

Mbr	Mac Address	type	Status ID
-----	-----	-----	-----
1	88:3a:30:a3:e5:40	JL660A	Master
2	88:3a:30:a6:d9:80	JL660A	Standby

Answer: D

#### NEW QUESTION 47

Which two options are correct regarding the IEEE 802.11ax standard? (Choose two.)

- A. allows transmissions of up to 4.8Gbps
- B. is an emerging satellite connection standard to allow wireless access anywhere in the world
- C. operates only in the 5GHz similar to 802.11ac
- D. operates in both the 2.4GHz and 5GHz radios bands
- E. is the first WLAN standard to no longer use electromagnetic signals to transmit data

Answer: AD

#### NEW QUESTION 52

.....

## THANKS FOR TRYING THE DEMO OF OUR PRODUCT

Visit Our Site to Purchase the Full Set of Actual HPE6-A72 Exam Questions With Answers.

We Also Provide Practice Exam Software That Simulates Real Exam Environment And Has Many Self-Assessment Features. Order the HPE6-A72 Product From:

<https://www.2passeasy.com/dumps/HPE6-A72/>

## Money Back Guarantee

### HPE6-A72 Practice Exam Features:

- \* HPE6-A72 Questions and Answers Updated Frequently
- \* HPE6-A72 Practice Questions Verified by Expert Senior Certified Staff
- \* HPE6-A72 Most Realistic Questions that Guarantee you a Pass on Your FirstTry
- \* HPE6-A72 Practice Test Questions in Multiple Choice Formats and Updatesfor 1 Year