

Exam Questions NSE5_FMG-7.0

Fortinet NSE 5 - FortiManager 7.0

https://www.2passeasy.com/dumps/NSE5_FMG-7.0/



NEW QUESTION 1

- (Topic 1)

An administrator would like to create an SD-WAN using central management in the Training ADOM.

To create an SD-WAN using central management, which two steps must be completed? (Choose two.)

- A. Specify a gateway address when you create a default SD-WAN static route
- B. Enable SD-WAN central management in the Training ADOM
- C. Configure and install the SD-WAN firewall policy and SD-WAN static route before installing the SD-WAN template settings
- D. Remove all the interface references such as routes or policies that will be a part of SD-WAN member interfaces

Answer: BD

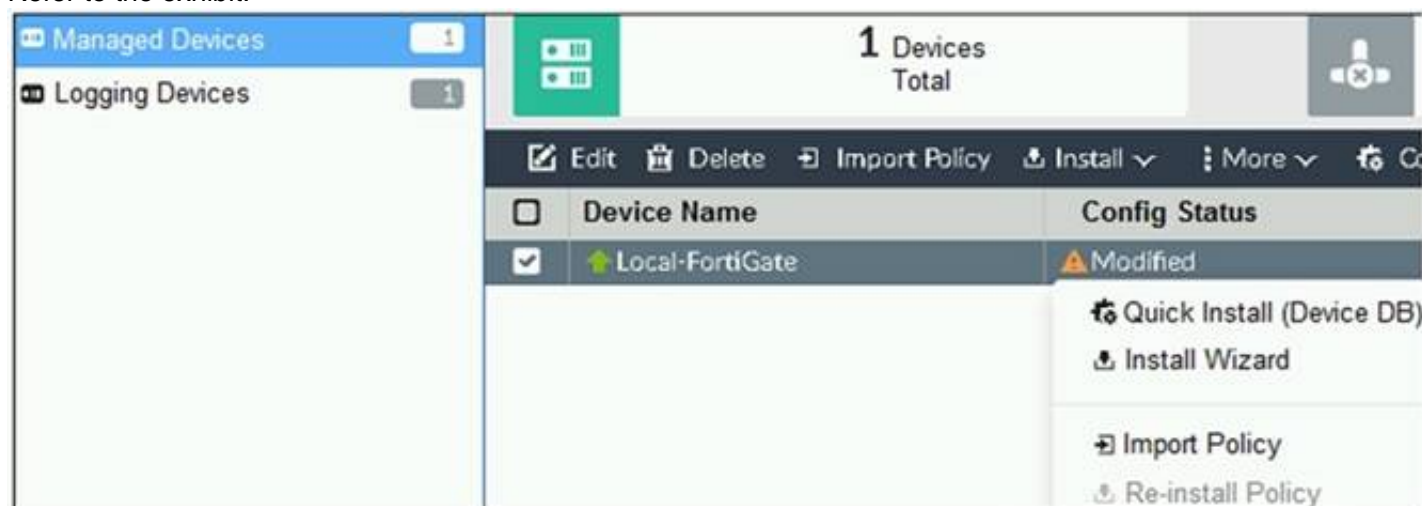
Explanation:

Reference: <https://docs.fortinet.com/document/fortigate/6.0.0/cookbook/676493/removing-existing-configuration-references-to-interfaces>

NEW QUESTION 2

- (Topic 1)

Refer to the exhibit.



You are using the Quick Install option to install configuration changes on the managed FortiGate.

Which two statements correctly describe the result? (Choose two.)

- A. It will not create a new revision in the revision history
- B. It installs device-level changes to FortiGate without launching the Install Wizard
- C. It cannot be canceled once initiated and changes will be installed on the managed device
- D. It provides the option to preview configuration changes prior to installing them

Answer: BC

Explanation:

FortiManager_6.4_Study_Guide-Online – page 164

The Install Config option allows you to perform a quick installation of device-level settings without launching the Install Wizard. When you use this option, you cannot preview the changes prior to committing. Administrator should be certain of the changes before using this install option, because the install can't be cancelled after the process is initiated.

NEW QUESTION 3

- (Topic 1)

View the following exhibit.

The screenshot shows the FortiManager GUI. The top navigation bar includes 'Device Manager', 'Device & Groups', 'Firmware', and 'License'. The 'Device Manager' tab is active, showing a list of devices under 'Managed FortiGate'. A dropdown menu is open, showing a list of devices: 'Local-FortiGate', 'Remote-FortiGate', 'root [NAT] (Management)', 'Student[NAT]', and 'Trainer [NAT]'. A red box labeled 'Managed FortiGate devices' highlights this list.

The 'Policy Packages' tab is also visible, showing a list of packages: 'IPv4 Policy', 'Installation Targets', and 'default'. A red box labeled 'Installation targets' highlights the 'Installation Targets' package.

The 'Installation Targets' package is selected, and the 'Install On' column is visible. A table shows the installation targets for the 'Installation Targets' package:

Seq.#	Install On	Name	From	To
1	Remote-FortiGate(Student)	Ping_Access	port3	port1
2	Local-FortiGate(root)	Web	port3	port1
3	Installation Targets	Source_Device	port3	port1

A red box labeled 'Policy Package' highlights the 'Installation Targets' package in the table.

Given the configurations shown in the exhibit, what can you conclude from the installation targets in the Install On column?

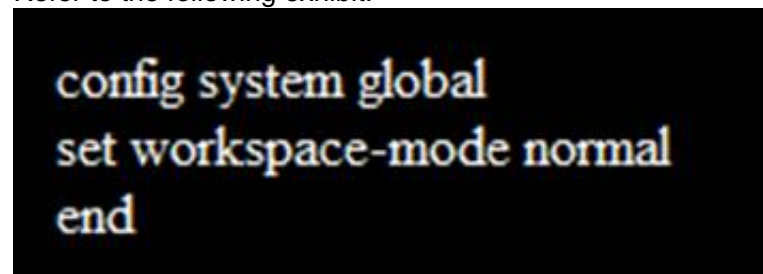
- A. The Install On column value represents successful installation on the managed devices
- B. Policy seq#3 will be installed on all managed devices and VDOMs that are listed under Installation Targets
- C. Policy seq#3 will be installed on the Trainer[NAT] VDOM only
- D. Policy seq#3 will be not installed on any managed device

Answer: B

NEW QUESTION 4

- (Topic 1)

Refer to the following exhibit:



Which of the following statements are true based on this configuration? (Choose two.)

- A. The same administrator can lock more than one ADOM at the same time
- B. Ungraceful closed sessions will keep the ADOM in a locked state until the administrator session times out
- C. Unlocking an ADOM will submit configuration changes automatically to the approval administrator
- D. Unlocking an ADOM will install configuration automatically on managed devices

Answer: AB

Explanation:

Reference: http://help.fortinet.com/fmgr/cli/5-6-2/Document/0800_ADOMs/200_Configuring+.htm

NEW QUESTION 5

- (Topic 1)

What will happen if FortiAnalyzer features are enabled on FortiManager?

- A. FortiManager will reboot
- B. FortiManager will send the logging configuration to the managed devices so the managed devices will start sending logs to FortiManager
- C. FortiManager will enable ADOMs automatically to collect logs from non-FortiGate devices
- D. FortiManager can be used only as a logging device.

Answer: A

Explanation:

Reference: https://help.fortinet.com/fmgr/50hlp/56/5-6-1/FortiManager_Admin_Guide/1800_FAZ%20Features/0200_Enable%20FAZ%20Features.htm

NEW QUESTION 6

- (Topic 1)

View the following exhibit:

Create New CLI Script

[\[View Sample Script\]](#)

Script Name	Config
Comments	Write a comment0/255
Type	CLI Script
Run Script on	Remote FortiGate Directly(via CLI)

Script Detail

```
config vpn ipsec phase1-interface
edit "H25_0"
set auto-discovery-sender enable
next
end
config system interface
edit "H25_0"
set vdom "root"
set ip 172.16.1.1 255.255.255.255
set remote-ip 172.16.1.254
next
end
config router bgp
set as 65100
set router-id 172.16.1.1
config neighbor-group
```

Advanced Device Filters

Which two statements are true if the script is executed using the Remote FortiGate Directly (via CLI) option? (Choose two.)

- A. You must install these changes using Install Wizard
- B. FortiGate will auto-update the FortiManager's device-level database.
- C. FortiManager will create a new revision history.
- D. FortiManager provides a preview of CLI commands before executing this script on a managed FortiGate.

Answer: BC

NEW QUESTION 7

- (Topic 1)

View the following exhibit:

```
#diagnose fmupdate view-serverlist fds
Fortiguard Server Comm: Enabled
Server Override Mode: Loose
FDS server list :
Index Address          Port    TimeZone  Distance  Source
- - - - -
*0   10.0.1.50             8890    -5         0         CLI
1    96.45.33.89           443     -5         0         FDNI
2    96.45.32.81           443     -5         0         FDNI
....
38  fds1.fortinet.com     443     -5         0         DEFAULT
```

How will FortiManager try to get updates for antivirus and IPS?

- A. From the list of configured override servers with ability to fall back to public FDN servers
- B. From the configured override server list only
- C. From the default server fds1.fortinet.com
- D. From public FDNI server with highest index number only

Answer: A

Explanation:

Reference: <https://community.fortinet.com/t5/Fortinet-Forum/Clarification-of-FortiManager-s-quot-Server-Override-Mode-quot/td-p/89973>

NEW QUESTION 8

- (Topic 1)

Which configuration setting for FortiGate is part of a device-level database on FortiManager?

- A. VIP and IP Pools
- B. Firewall policies
- C. Security profiles
- D. Routing

Answer: D

Explanation:

The FortiManager stores the FortiGate configuration details in two distinct databases. The device-level database includes configuration details related to device-level settings, such as interfaces, DNS, routing, and more. The ADOM-level database includes configuration details related to firewall policies, objects, and security profiles.

NEW QUESTION 9

- (Topic 1)

In the event that the primary FortiManager fails, which of the following actions must be performed to return the FortiManager HA to a working state?

- A. Secondary device with highest priority will automatically be promoted to the primary role, and manually reconfigure all other secondary devices to point to the new primary device
- B. Reboot one of the secondary devices to promote it automatically to the primary role, and reconfigure all other secondary devices to point to the new primary device.
- C. Manually promote one of the secondary devices to the primary role, and reconfigure all other secondary devices to point to the new primary device.
- D. FortiManager HA state transition is transparent to administrators and does not require any reconfiguration.

Answer: C

Explanation:

FortiManager_6.4_Study_Guide-Online – page 346

FortiManager HA doesn't support IP takeover where an HA state transition is transparent to administrators. If a failure of the primary occurs, the administrator must take corrective action to resolve the problem that may include invoking the state transition. If the primary device fails, the administrator must do the following in order to return the FortiManager HA to a working state:

- * 1. Manually reconfigure one of the secondary devices to become the primary device
- * 2. Reconfigure all other secondary devices to point to the new primary device

NEW QUESTION 10

- (Topic 1)

Refer to the exhibits. Exhibit one.

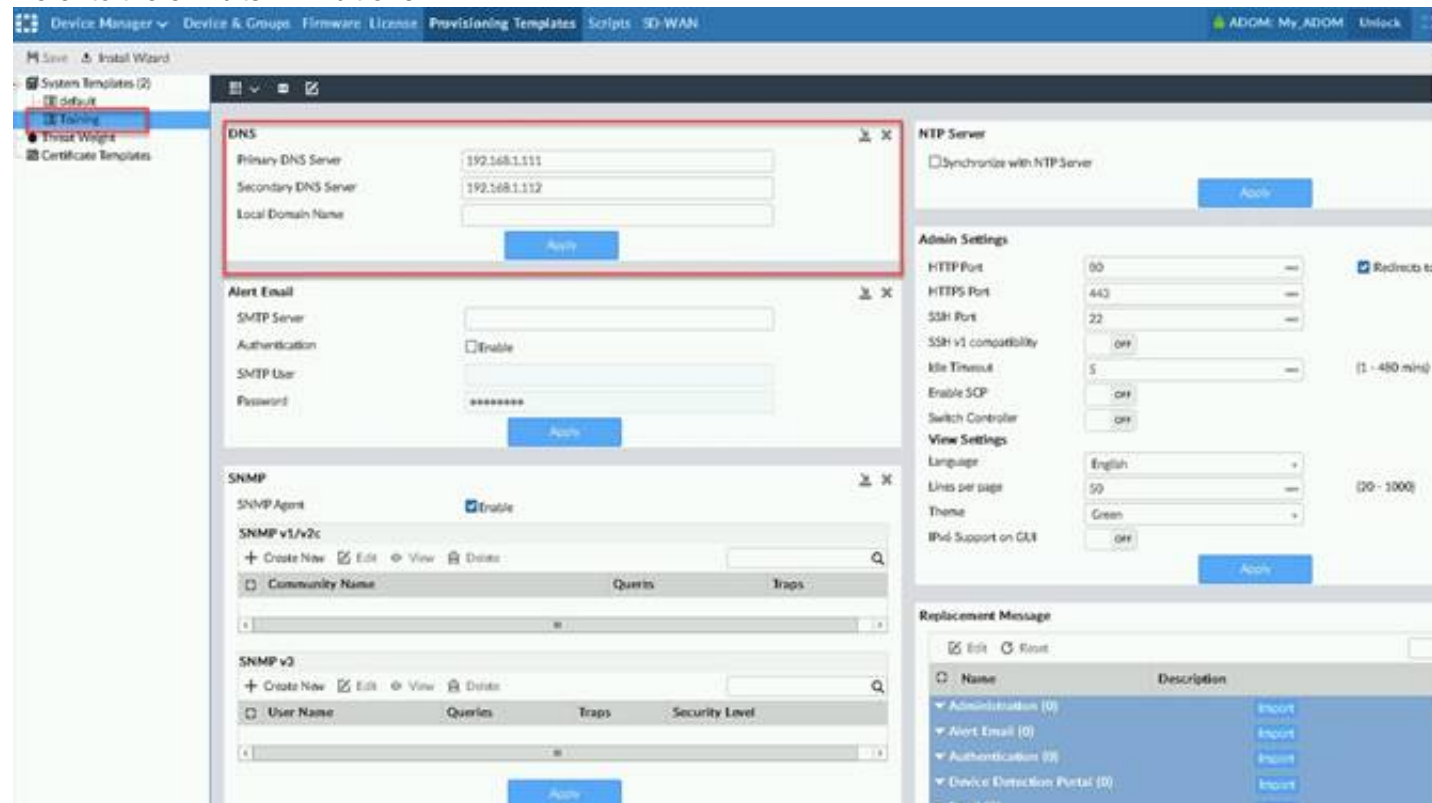
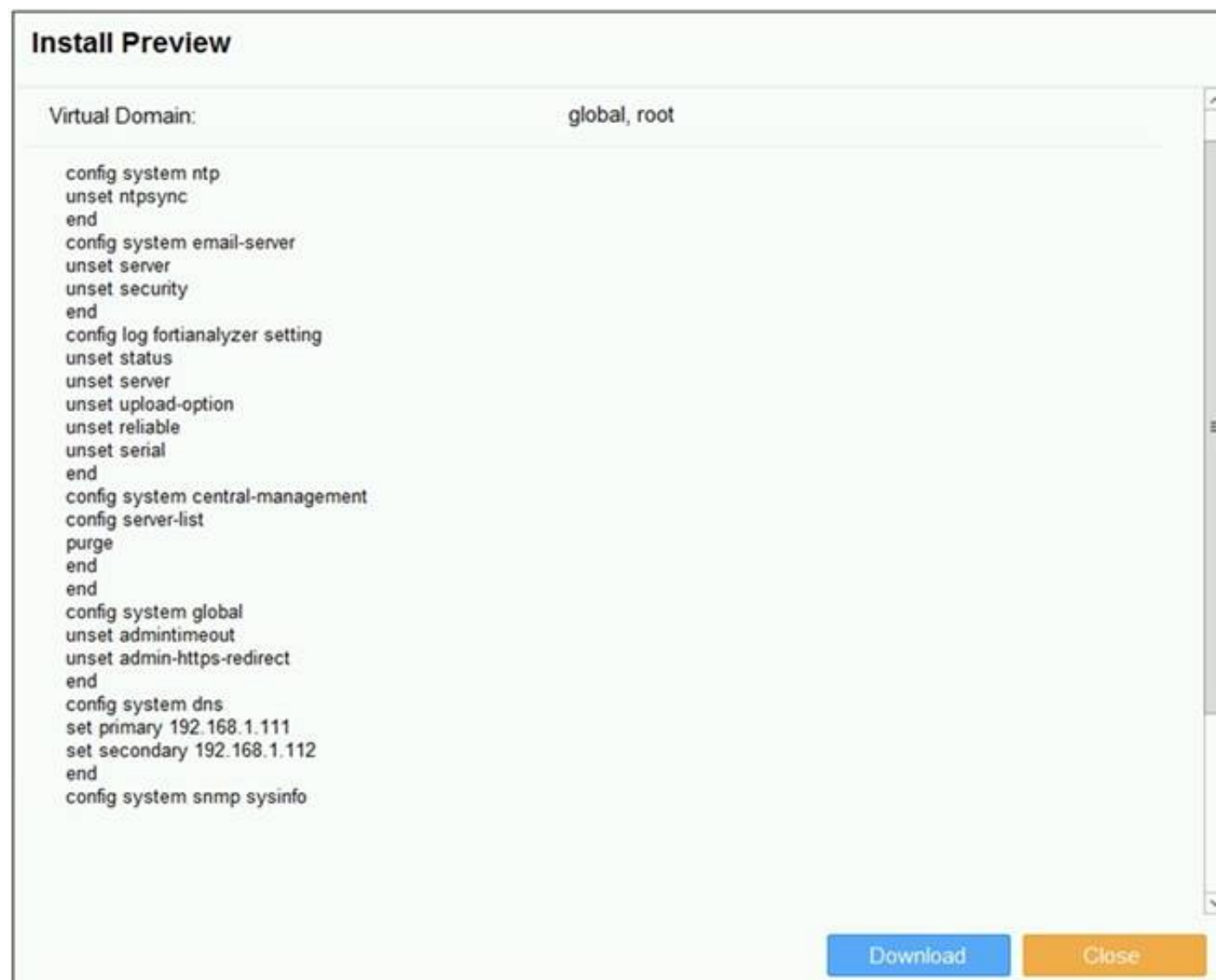


Exhibit two.



An administrator created a new system template named Training with two new DNS addresses on FortiManager. During the installation preview stage, the administrator notices that many unset commands need to be pushed. What can be the main reason for these unset commands?

- A. The DNS addresses in the default system settings are the same as the Training system template
- B. The Training system template has other default settings
- C. The ADOM is locked by another administrator
- D. The Training system template does not have assigned devices

Answer: B

NEW QUESTION 10

- (Topic 1)

You are moving managed FortiGate devices from one ADOM to a new ADOM. Which statement correctly describes the expected result?

- A. Any pending device settings will be installed automatically
- B. Any unused objects from a previous ADOM are moved to the new ADOM automatically
- C. The shared policy package will not be moved to the new ADOM
- D. Policy packages will be imported into the new ADOM automatically

Answer: C

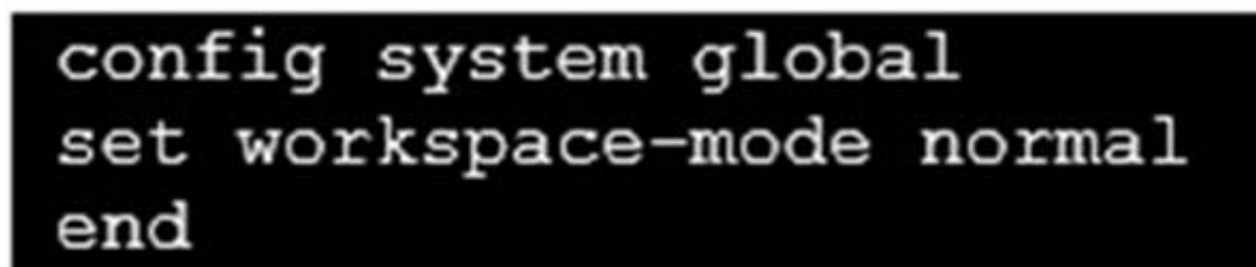
Explanation:

Reference: <https://community.fortinet.com/t5/FortiManager/Technical-Note-How-to-move-objects-to-new-ADOM-on-FortiManager/ta-p/198342>

NEW QUESTION 11

- (Topic 2)

Refer to the exhibit.



Given the configuration shown in the exhibit, which two statements are true? (Choose two.)

- A. It allows two or more administrators to make configuration changes at the same time, in the same ADOM.
- B. It disables concurrent read-write access to an ADOM.
- C. It allows the same administrator to lock more than one ADOM at the same time.
- D. It is used to validate administrator login attempts through external servers.

Answer: BC

Explanation:

Reference: <https://docs.fortinet.com/document/fortimanager/6.0.4/administration-guide/86456/concurrentadom-access>

NEW QUESTION 16

- (Topic 2)

Which two statements regarding device management on FortiManager are true? (Choose two.)

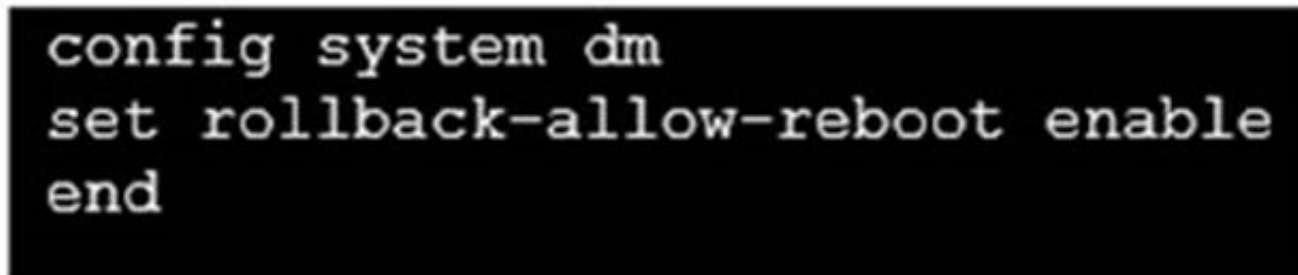
- A. FortiGate devices in HA cluster devices are counted as a single device.
- B. FortiGate in transparent mode configurations are not counted toward the device count on FortiManager.
- C. FortiGate devices in an HA cluster that has five VDOMs are counted as five separate devices.
- D. The maximum number of managed devices for each ADOM is 500.

Answer: AC

NEW QUESTION 17

- (Topic 2)

Refer to the exhibit.



```
config system dm
set rollback-allow-reboot enable
end
```

An administrator has configured the command shown in the exhibit on FortiManager. A configuration change has been installed from FortiManager to the managed FortiGate that causes the FGFM tunnel to go down for more than 15 minutes.

What is the purpose of this command?

- A. It allows FortiGate to unset central management settings.
- B. It allows FortiGate to reboot and recover the previous configuration from its configuration file.
- C. It allows the FortiManager to revert and install a previous configuration revision on the managed FortiGate.
- D. It allows FortiGate to reboot and restore a previously working firmware image.

Answer: B

Explanation:

Reference: <https://docs.fortinet.com/document/fortimanager/6.2.0/fortigate-fortimanager-communicationsprotocol-guide/141304/fgfm-recovery-logic>

NEW QUESTION 21

- (Topic 2)

An administrator configures a new firewall policy on FortiManager and has not yet pushed the changes to the managed FortiGate.

In which database will the configuration be saved?

- A. Device-level database
- B. Revision history database
- C. ADOM-level database
- D. Configuration-level database

Answer: C

Explanation:

<https://kb.fortinet.com/kb/documentLink.do?externalID=FD47942>

NEW QUESTION 23

- (Topic 2)

What does a policy package status of Conflict indicate?

- A. The policy package reports inconsistencies and conflicts during a Policy Consistency Check.
- B. The policy package does not have a FortiGate as the installation target.
- C. The policy package configuration has been changed on both FortiManager and the managed device independently.
- D. The policy configuration has never been imported after a device was registered on FortiManager.

Answer: C

NEW QUESTION 25

- (Topic 2)

An administrator's PC crashes before the administrator can submit a workflow session for approval. After the PC is restarted, the administrator notices that the ADOM was locked from the session before the crash.

How can the administrator unlock the ADOM?

- A. Restore the configuration from a previous backup.
- B. Log in as Super_User in order to unlock the ADOM.
- C. Log in using the same administrator account to unlock the ADOM.
- D. Delete the previous admin session manually through the FortiManager GUI or CLI.

Answer: D

NEW QUESTION 27

- (Topic 3)

What does a policy package status of Modified indicate?

- A. FortiManager is unable to determine the policy package status
- B. The policy package was never imported after a device was registered on FortiManager
- C. The Policy configuration has been changed on a managed device and changes have not yet been imported into FortiManager
- D. The Policy package configuration has been changed on FortiManager and changes have not yet been installed on the managed device.

Answer: D

Explanation:

Reference: http://help.fortinet.com/fmgr/50hlp/56/5-6-1/FortiManager_Admin_Guide/1200_Policy%20and%20Objects/0800_Managing%20policy%20packages/2200_Policy%20Package%20Installation%20targets.htm

NEW QUESTION 29

- (Topic 3)

An administrator has added all the devices in a Security Fabric group to FortiManager. How does the administrator identify the root FortiGate?

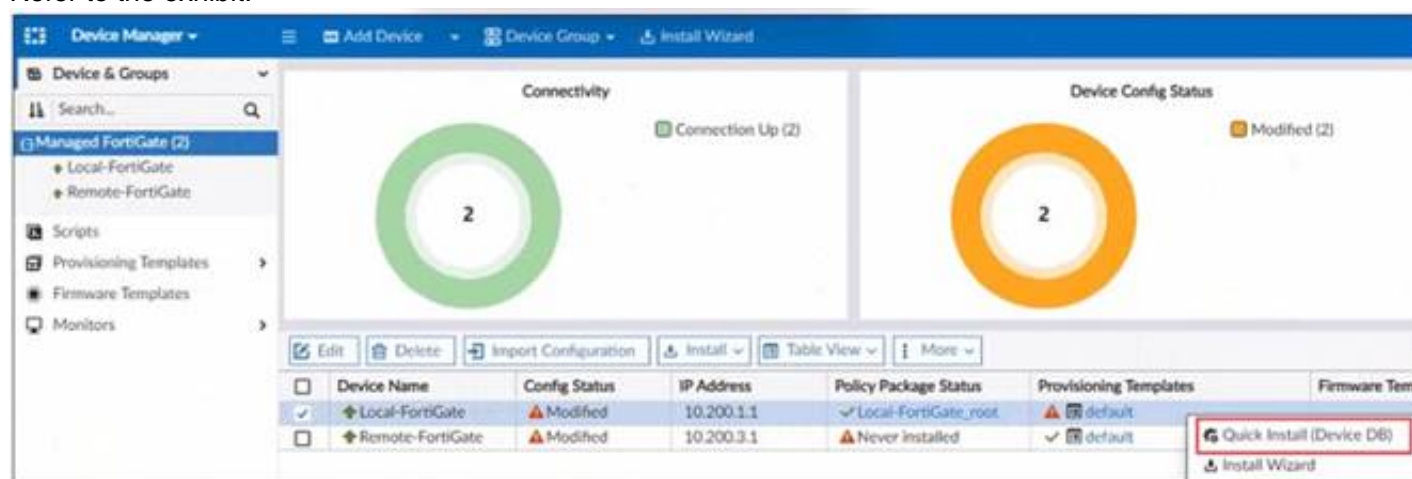
- A. By a dollar symbol (\$) at the end of the device name
- B. By an at symbol (@) at the end of the device name
- C. By a QUESTION NO: mark(?) at the end of the device name
- D. By an Asterisk (*) at the end of the device name

Answer: D

NEW QUESTION 34

- (Topic 3)

Refer to the exhibit.



You are using the Quick install option to install configuration changes on the managed FortiGate

Which two statements correctly describe the result? (Choose two)

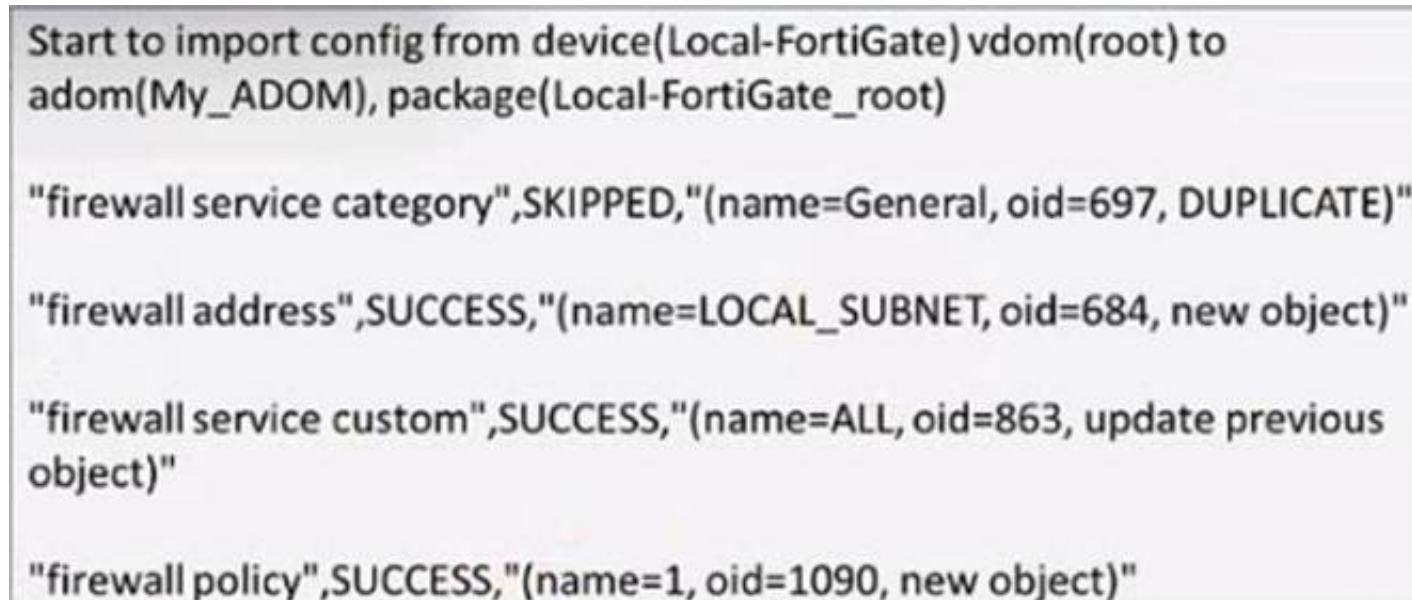
- A. It installs device-level changes on the FortiGate device without launching the Install Wizard
- B. It installs all the changes in the device database first and the administrator must reinstall the changes on the FortiGate device
- C. It provides the option to preview only the policy package changes before installing them
- D. It install provisioning template changes on the FortiGate device

Answer: AD

NEW QUESTION 36

- (Topic 3)

Refer to the exhibit.



Given the configuration shown in the exhibit, how did FortiManager handle the service category named General?

- A. FortiManager ignored the firewall service category General but created a new service category in its database.
- B. FortiManager ignored the firewall service category general and deleted the duplicate value in its database
- C. FortiManager ignored the firewall service category General and updated the FortiGate duplicate value in the FortiGate database.
- D. FortiManager ignored the firewall service category General and did not update its database with the value

Answer: C

NEW QUESTION 40

- (Topic 3)

In addition to the default ADOMs, an administrator has created a new ADOM named Training for FortiGate devices. The administrator authorized the FortiGate device on FortiManager using the Fortinet Security Fabric.

Given the administrator's actions, which statement correctly describes the expected result?

- A. The FortiManager administrator must add the authorized device to the Training ADOM using the Add Device wizard only.
- B. The authorized FortiGate will be automatically added to the Training ADOM.
- C. The authorized FortiGate will appear in the root ADOM.
- D. The authorized FortiGate can be added to the Training ADOM using FortiGate Fabric Connectors.

Answer: C

NEW QUESTION 44

- (Topic 3)

Which of the following statements are true regarding VPN Manager? (Choose three.)

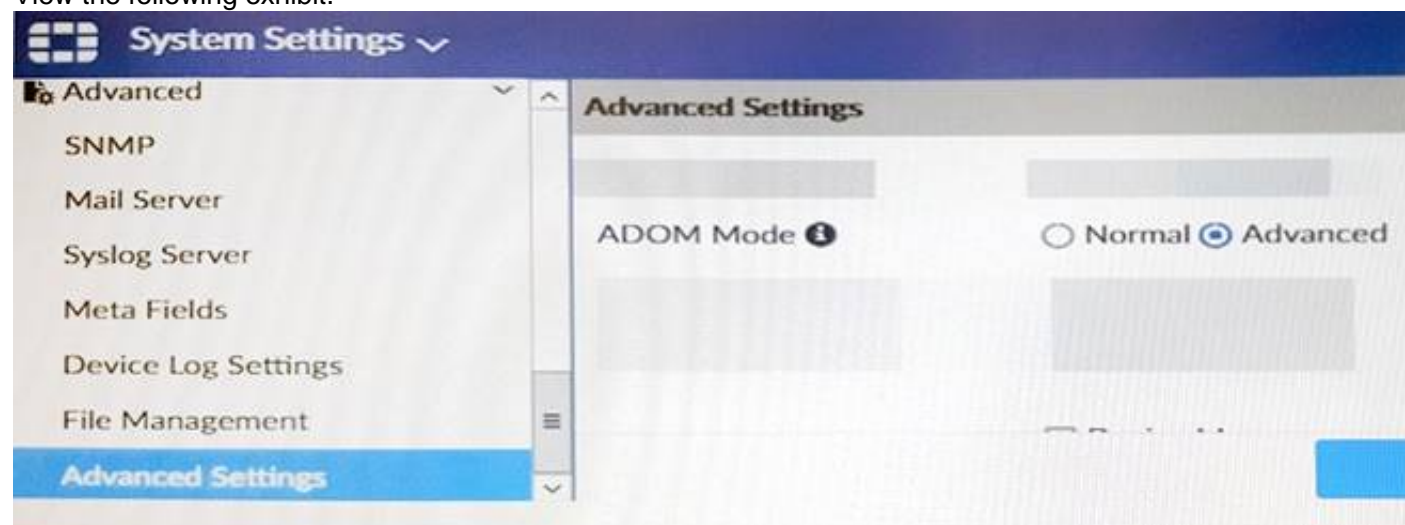
- A. VPN Manager must be enabled on a per ADOM basis.
- B. VPN Manager automatically adds newly-registered devices to a VPN community.
- C. VPN Manager can install common IPsec VPN settings on multiple FortiGate devices at the same time.
- D. Common IPsec settings need to be configured only once in a VPN Community for all managed gateways.
- E. VPN Manager automatically creates all the necessary firewall policies for traffic to be tunneled by IPsec.

Answer: ACD

NEW QUESTION 48

- (Topic 3)

View the following exhibit.



Which of the following statements are true based on this configuration setting? (Choose two.)

- A. This setting will enable the ADOMs feature on FortiManager.
- B. This setting is applied globally to all ADOMs.
- C. This setting will allow assigning different VDOMs from the same FortiGate to different ADOMs.
- D. This setting will allow automatic updates to the policy package configuration for a managed device.

Answer: BC

NEW QUESTION 49

.....

THANKS FOR TRYING THE DEMO OF OUR PRODUCT

Visit Our Site to Purchase the Full Set of Actual NSE5_FMG-7.0 Exam Questions With Answers.

We Also Provide Practice Exam Software That Simulates Real Exam Environment And Has Many Self-Assessment Features. Order the NSE5_FMG-7.0 Product From:

https://www.2passeasy.com/dumps/NSE5_FMG-7.0/

Money Back Guarantee

NSE5_FMG-7.0 Practice Exam Features:

- * NSE5_FMG-7.0 Questions and Answers Updated Frequently
- * NSE5_FMG-7.0 Practice Questions Verified by Expert Senior Certified Staff
- * NSE5_FMG-7.0 Most Realistic Questions that Guarantee you a Pass on Your FirstTry
- * NSE5_FMG-7.0 Practice Test Questions in Multiple Choice Formats and Updatesfor 1 Year