

Exam Questions NSE4_FGT-7.2

Fortinet NSE 4 - FortiOS 7.2

https://www.2passeasy.com/dumps/NSE4_FGT-7.2/



NEW QUESTION 1

Refer to the exhibit.

```
# diagnose test application ipsmonitor

1: Display IPS engine information
2: Toggle IPS engine enable/disable status
3: Display restart log
4: Clear restart log
5: Toggle bypass status
6: Submit attack characteristics now
10: IPS queue length
11: Clear IPS queue length
12: IPS L7 socket statistics
13: IPS session list
14: IPS NTurbo statistics
15: IPSA statistics
...
97: Start all IPS engines
98: Stop all IPS engines
99: Restart all IPS engines and monitor
```

Examine the intrusion prevention system (IPS) diagnostic command shown in the exhibit.

If option 5 is used with the IPS diagnostic command and the outcome is a decrease in the CPU usage, what is the correct conclusion?

- A. The IPS engine is unable to prevent an intrusion attack.
- B. The IPS engine is inspecting a high volume of traffic.
- C. The IPS engine will continue to run in a normal state.
- D. The IPS engine is blocking all traffic.

Answer: B

NEW QUESTION 2

A network administrator enabled antivirus and selected an SSL inspection profile on a firewall policy. When downloading an EICAR test file through HTTP, FortiGate detects the virus and blocks the file. When downloading the same file through HTTPS, FortiGate does not detect the virus and does not block the file, allowing it to be downloaded.

The administrator confirms that the traffic matches the configured firewall policy.

What are two reasons for the failed virus detection by FortiGate? (Choose two.)

- A. The website is exempted from SSL inspection.
- B. The EICAR test file exceeds the protocol options oversize limit.
- C. The selected SSL inspection profile has certificate inspection enabled.
- D. The browser does not trust the FortiGate self-signed CA certificate.

Answer: AD

NEW QUESTION 3

What are two functions of ZTNA? (Choose two.)

- A. ZTNA manages access through the client only.
- B. ZTNA manages access for remote users only.
- C. ZTNA provides a security posture check.
- D. ZTNA provides role-based access.

Answer: CD

NEW QUESTION 4

Which timeout setting can be responsible for deleting SSL VPN associated sessions?

- A. SSL VPN idle-timeout
- B. SSL VPN http-request-body-timeout
- C. SSL VPN login-timeout
- D. SSL VPN dtls-hello-timeout

Answer: A

NEW QUESTION 5

What are two benefits of flow-based inspection compared to proxy-based inspection? (Choose two.)

- A. FortiGate uses fewer resources.
- B. FortiGate performs a more exhaustive inspection on traffic.
- C. FortiGate adds less latency to traffic.
- D. FortiGate allocates two sessions per connection.

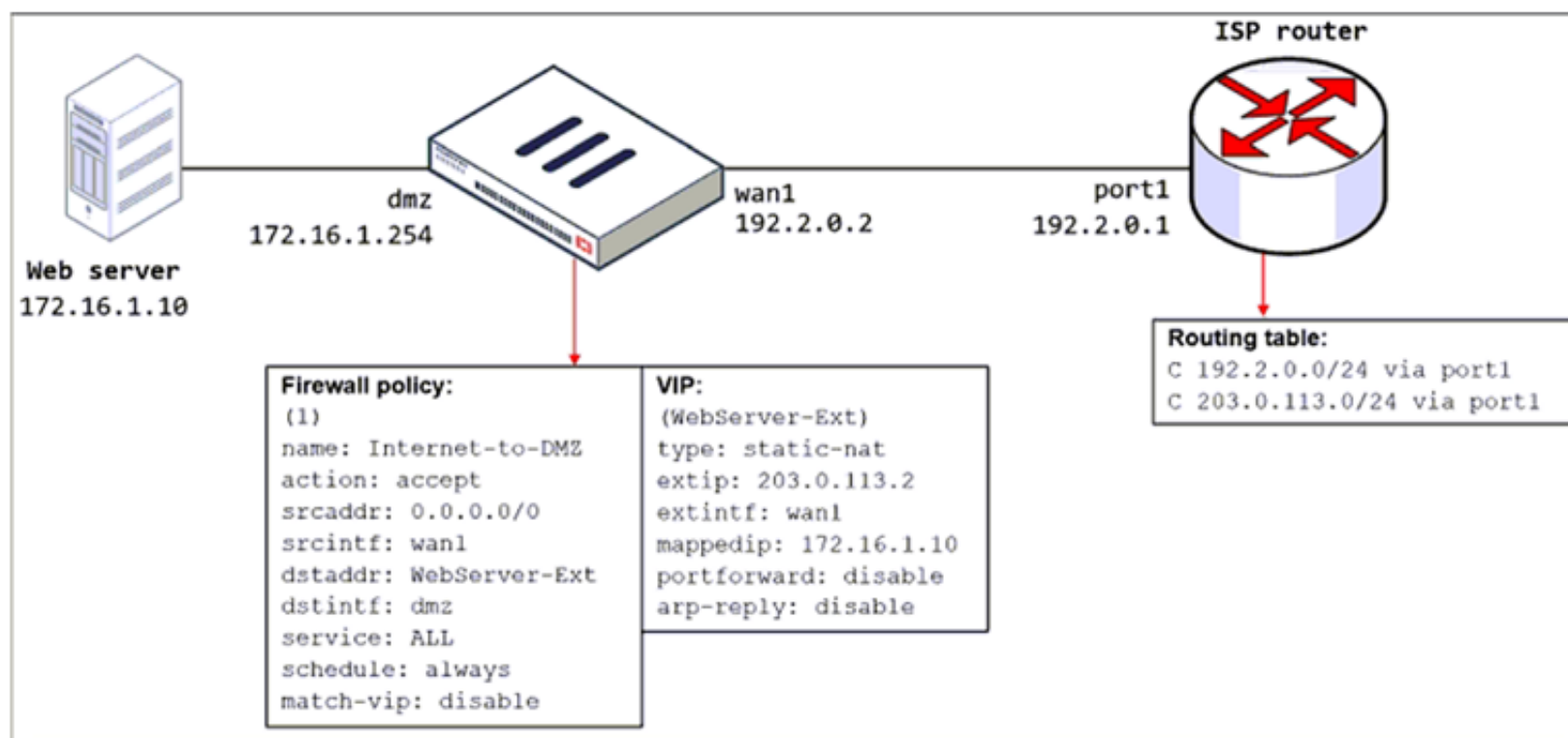
Answer: AC

NEW QUESTION 6

Refer to the exhibit.

The exhibit shows a diagram of a FortiGate device connected to the network, the firewall policy and VIP configuration on the FortiGate device, and the routing table on the ISP router.

When the administrator tries to access the web server public address (203.0.113.2) from the internet, the connection times out. At the same time, the administrator runs a sniffer on FortiGate to capture incoming web traffic to the server and does not see any output.



Based on the information shown in the exhibit, what configuration change must the administrator make to fix the connectivity issue?

- A. Configure a loopback interface with address 203.0.113.2/32.
- B. In the VIP configuration, enable arp-reply.
- C. Enable port forwarding on the server to map the external service port to the internal service port.
- D. In the firewall policy configuration, enable match-vip.

Answer: D

NEW QUESTION 7

Refer to the exhibits.

Exhibit A shows system performance output. Exhibit B shows a FortiGate configured with the default configuration of high memory usage thresholds.

Exhibit A

```
# get system performance status
CPU states: 0% user 0% system 0% nice 100% idle 0% iowait 0% irq 0% softirq
CPU0 states: 0% user 0% system 0% nice 100% idle 0% iowait 0% irq 0% softirq
Memory: 2061108k total, 1854997k used (90%), 106111k free (5.1%), 100000k freeable (4.8%)
Average network usage: 83 / 0 kbps in 1 minute, 81 / 0 kbps in 10 minutes, 81 / 0 kbps in 30
minutes
Average sessions: 5 sessions in 1 minute, 3 sessions in 10 minutes, 3 sessions in 30 minutes
Average session setup rate: 0 sessions per second in last 1 minute, 0 sessions per second in last
10 minutes, 0 sessions per second in last 30 minutes
Virus caught: 0 total in 1 minute
IPS attacks blocked: 0 total in 1 minute
Uptime: 10 days, 3 hours, 28 minutes
```

Exhibit B

```
config system global
    set memory-use-threshold-red 88
    set memory-use-threshold-extreme 95
    set memory-use-threshold-green 82
end
```

Based on the system performance output, which two results are correct? (Choose two.)

- A. FortiGate will start sending all files to FortiSandbox for inspection.
- B. FortiGate has entered conserve mode.
- C. Administrators cannot change the configuration.
- D. Administrators can access FortiGate only through the console port.

Answer: BD

NEW QUESTION 8

Refer to the exhibits.

The exhibits show the firewall policies and the objects used in the firewall policies.

The administrator is using the Policy Lookup feature and has entered the search criteria shown in the exhibit.

Exhibit A Exhibit B

Address Object

Name	Details
IP Range/Subnet	
LOCAL_CLIENT	10.0.1.10/32
all	0.0.0.0.0
FQDN	
facebook.com	facebook.com

Internet Service Object

Name	Direction	Number of Entries	
Predefined Internet Services			
Facebook-Web	Destination	26.578	
IP	Port	Protocol	Status
1.9.91.17 - 1.9.91.18	80	TCP	Enabled
	443		
	8443		
1.9.91.17 - 1.9.91.18	443	UDP	Enabled
1.9.91.30	443	UDP	Enabled

Firewall Policies

ID	From	To	Source	Destination	Schedule	Service	Action	NAT
3	port3	port1	LOCAL_CLIENT	facebook.com	always	ULL_UDP	ACCEPT	Enabled
1	port1	port3	facebook.com	LOCAL_CLIENT	always	ULL_UDP	ACCEPT	Enabled
4	port4	port1	LOCAL_CLIENT	all	always	HTTP DNS HTTPS	ACCEPT	Enabled
5	port3	port1	LOCAL_CLIENT	Facebook-Web	always	Internet Service	ACCEPT	Enabled
2	port3	port1	all	all	always	ALL	ACCEPT	Enabled

Exhibit A Exhibit B

Policy Lookup

Incoming Interface
port3

IP Version
IPv4

Protocol
TCP

Source
10.0.1.10

Source Port
Optional (1-65535)

Destination
facebook.com

Destination Port
443

Search
Close

Which policy will be highlighted, based on the input criteria?

- A. Policy with ID 4.
- B. Policy with ID 5.
- C. Policies with ID 2 and 3.
- D. Policy with ID 4.

Answer: A

NEW QUESTION 9

Refer to the exhibit.


```
FGT1 # get router info routing-table database
Codes: K - kernel, C - connected, S - static, R - RIP, B - BGP
       O - OSPF, IA - OSPF inter area
       N1 - OSPF NSSA external type 1, N2 - OSPF NSSA external type 2
       E1 - OSPF external type 1, E2 - OSPF external type 2
       i - IS-IS, L1 - IS-IS level-1, L2 - IS-IS level-2, ia - IS-IS inter area
       > - selected route, * - FIB route, p - stale info

S      *> 0.0.0.0/0 [10/0] via 172.20.121.2, port1, [20/0]
      *>          [10/0] via 10.0.0.2, port2, [30/0]
S      0.0.0.0/0 [20/0] via 192.168.15.2, port3, [10/0]
C      *> 10.0.0.0/24 is directly connected, port2
S      172.13.24.0/24 [10.0] is directly connected, port4
C      *> 172.20.121.0/24 is directly connected, port1
S      *> 192.167.1.0/24 [10/0] via 10.0.0.2, port2
C      *> 192.168.15.0/24 is directly connected, port3
```

Given the routing database shown in the exhibit, which two statements are correct? (Choose two.)

- A. The port3 default route has the highest distance.
- B. The port3 default route has the lowest metric.
- C. There will be eight routes active in the routing table.
- D. The port1 and port2 default routes are active in the routing table.

Answer: AD

NEW QUESTION 10

In consolidated firewall policies, IPv4 and IPv6 policies are combined in a single consolidated policy. Instead of separate policies. Which three statements are true about consolidated IPv4 and IPv6 policy configuration? (Choose three.)

- A. The IP version of the sources and destinations in a firewall policy must be different.
- B. The Incoming Interface
- C. Outgoing Interface
- D. Schedule, and Service fields can be shared with both IPv4 and IPv6.
- E. The policy table in the GUI can be filtered to display policies with IPv4, IPv6 or IPv4 and IPv6 sources and destinations.
- F. The IP version of the sources and destinations in a policy must match.
- G. The policy table in the GUI will be consolidated to display policies with IPv4 and IPv6 sources and destinations.

Answer: BDE

NEW QUESTION 10

Refer to the exhibit.

Name	Severity	Target	OS	Action	CVE-ID
IPS Signature 1					
FTP.Login.Failed	Server	All		Pass	

Review the Intrusion Prevention System (IPS) profile signature settings. Which statement is correct in adding the FTP.Login.Failed signature to the IPS sensor profile?

- A. The signature setting uses a custom rating threshold.
- B. The signature setting includes a group of other signatures.
- C. Traffic matching the signature will be allowed and logged.
- D. Traffic matching the signature will be silently dropped and logged.

Answer: D

Explanation:

Action is drop, signature default action is listed only in the signature, it would only match if action was set to default.

NEW QUESTION 15

Which two statements explain antivirus scanning modes? (Choose two.)

- A. In proxy-based inspection mode, files bigger than the buffer size are scanned.

- B. In flow-based inspection mode, FortiGate buffers the file, but also simultaneously transmits it to the client.
- C. In proxy-based inspection mode, antivirus scanning buffers the whole file for scanning, before sending it to the client.
- D. In flow-based inspection mode, files bigger than the buffer size are scanned.

Answer: BC

Explanation:

An antivirus profile in full scan mode buffers up to your specified file size limit. The default is 10 MB. That is large enough for most files, except video files. If your FortiGate model has more RAM, you may be able to increase this threshold. Without a limit, very large files could exhaust the scan memory. So, this threshold balances risk and performance. Is this tradeoff unique to FortiGate, or to a specific model? No. Regardless of vendor or model, you must make a choice. This is because of the difference between scans in theory, that have no limits, and scans on real-world devices, that have finite RAM. In order to detect 100% of malware regardless of file size, a firewall would need infinitely large RAM--something that no device has in the real world. Most viruses are very small. This table shows a typical tradeoff. You can see that with the default 10 MB threshold, only 0.01% of viruses pass through.

NEW QUESTION 19

Which three authentication timeout types are availability for selection on FortiGate? (Choose three.)

- A. hard-timeout
- B. auth-on-demand
- C. soft-timeout
- D. new-session
- E. Idle-timeout

Answer: ADE

Explanation:

<https://kb.fortinet.com/kb/documentLink.do?externalID=FD37221>

NEW QUESTION 21

Which statement about video filtering on FortiGate is true?

- A. Full SSL Inspection is not required.
- B. It is available only on a proxy-based firewall policy.
- C. It inspects video files hosted on file sharing services.
- D. Video filtering FortiGuard categories are based on web filter FortiGuard categories.

Answer: B

NEW QUESTION 25

Which two statements are correct regarding FortiGate HA cluster virtual IP addresses? (Choose two.)

- A. Heartbeat interfaces have virtual IP addresses that are manually assigned.
- B. A change in the virtual IP address happens when a FortiGate device joins or leaves the cluster.
- C. Virtual IP addresses are used to distinguish between cluster members.
- D. The primary device in the cluster is always assigned IP address 169.254.0.1.

Answer: BD

NEW QUESTION 28

FortiGuard categories can be overridden and defined in different categories. To create a web rating override for example.com home page, the override must be configured using a specific syntax.

Which two syntaxes are correct to configure web rating for the home page? (Choose two.)

- A. www.example.com:443
- B. www.example.com
- C. example.com
- D. www.example.com/index.html

Answer: BC

Explanation:

When using FortiGuard category filtering to allow or block access to a website, one option is to make a web rating override and define the website in a different category. Web ratings are only for host names - no URLs or wildcard characters are allowed.

OK: google.com or www.google.com

NO OK: www.google.com/index.html or google.* FortiGate_Security_6.4 page 384

When using FortiGuard category filtering to allow or block access to a website, one option is to make a web rating override and define the website in a different category. Web ratings are only for host names-- "no URLs or wildcard characters are allowed".

NEW QUESTION 33

Which two statements are correct about a software switch on FortiGate? (Choose two.)

- A. It can be configured only when FortiGate is operating in NAT mode
- B. Can act as a Layer 2 switch as well as a Layer 3 router
- C. All interfaces in the software switch share the same IP address
- D. It can group only physical interfaces

Answer: AC

NEW QUESTION 34

Refer to the exhibits.

The exhibits show a network diagram and firewall configurations.

An administrator created a Deny policy with default settings to deny Webserver access for Remote-User2. Remote-User1 must be able to access the Webserver. Remote-User2 must not be able to access the Webserver.

Exhibit A Exhibit B

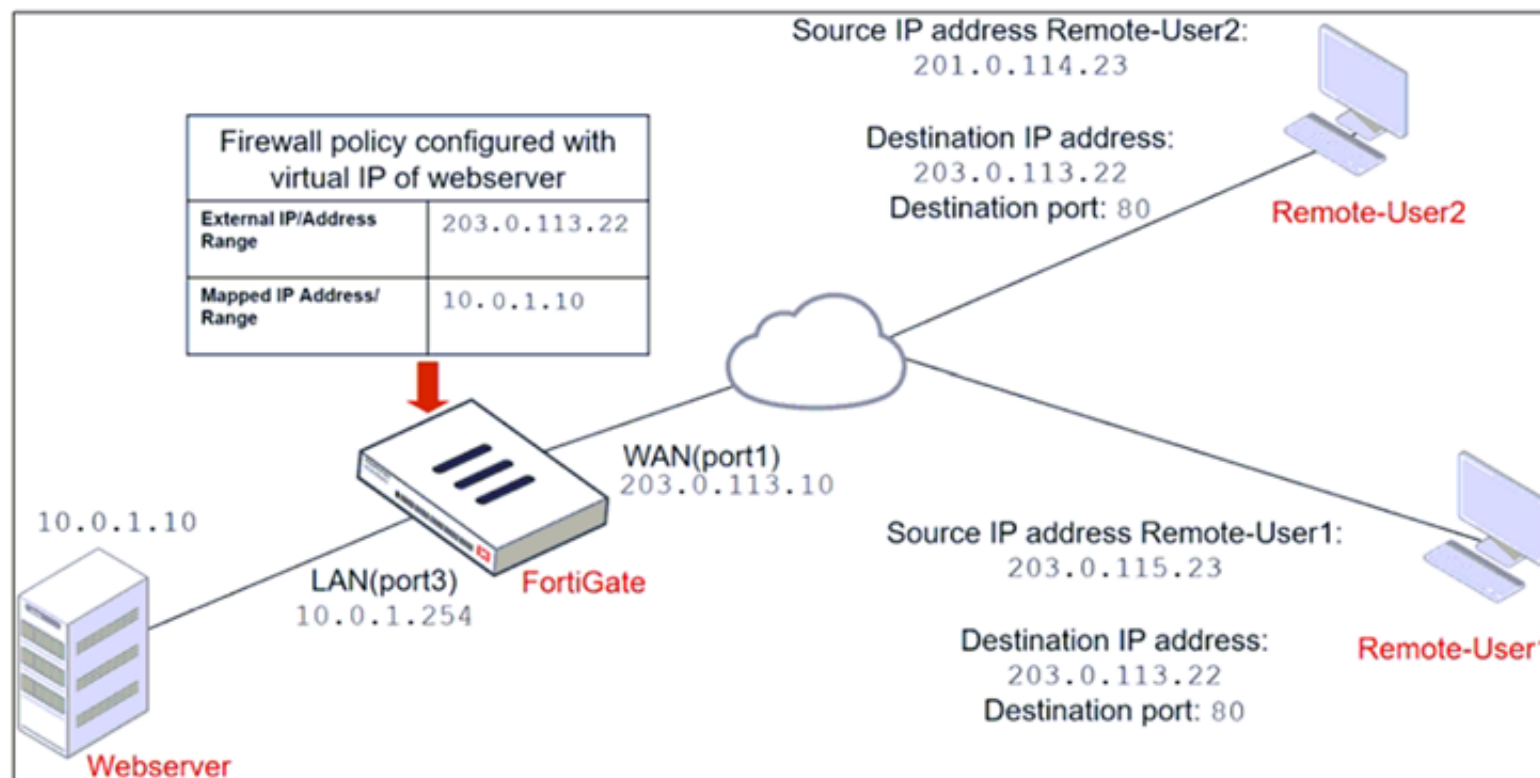


Exhibit A Exhibit B

Edit Address

Name	Deny_IP
Color	Change
Type	Subnet
IP/Netmask	201.0.114.23/32
Interface	WAN (port1)
Static route configuration	<input type="checkbox"/>
Comments	Deny web server access. 23/255

Firewall address object

Firewall policies

ID	Name	Source	Destination	Schedule	Service	Action
WAN (port1) → LAN (port3) 2						
4	Deny	Deny_IP	all	always	ALL	DENY
3	Allow_access	all	Webserver	always	ALL	ACCEPT

In this scenario, which two changes can the administrator make to deny Webserver access for Remote-User2? (Choose two.)

- A. Disable match-vip in the Deny policy.
- B. Set the Destination address as Deny_IP in the Allow-access policy.
- C. Enable match vip in the Deny policy.
- D. Set the Destination address as Web_server in the Deny policy.

Answer: CD

Explanation:

<https://community.fortinet.com/t5/FortiGate/Technical-Tip-Firewall-does-not-block-incoming-WAN-to-LAN/ta>

NEW QUESTION 36

Refer to the exhibits.

Exhibit A shows a topology for a FortiGate HA cluster that performs proxy-based inspection on traffic. Exhibit B shows the HA configuration and the partial output of the get system ha status command.

Exhibit A Exhibit B

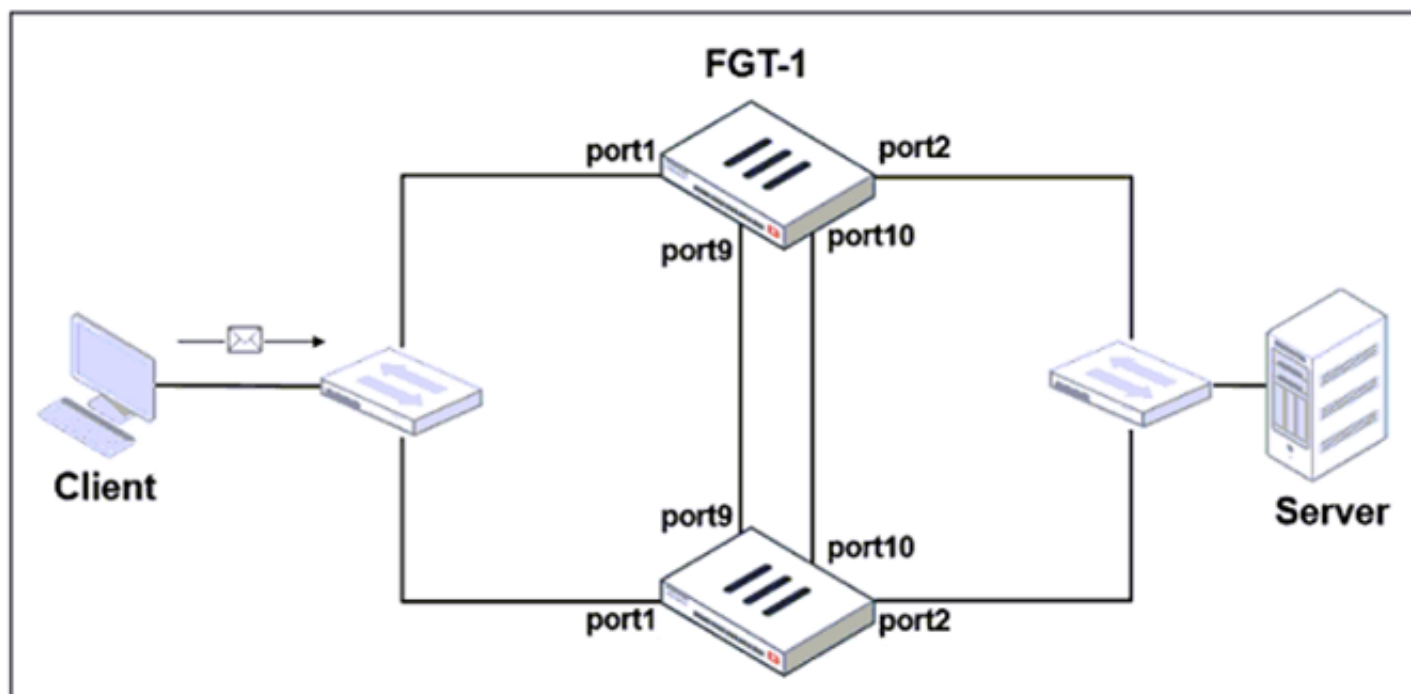


Exhibit A Exhibit B

```
set group-id 3
set group-name "NSE"
set mode a-a
set password *
set hbdev "port9" 50 "port10" 50
set session-pickup enable
set override disable
set monitor port3
end

# get system ha status
...
Primary      : FGT-2, FGVM010000065036, HA cluster index = 1
Secondary    : FGT-1, FGVM010000064692, HA cluster index = 0
number of vcluster: 1
vcluster 1: work 169.254.0.2
Primary: FGVM010000065036, HA operating index = 1
Secondary: FGVM010000064692, HA operating index = 0
```

Based on the exhibits, which two statements about the traffic passing through the cluster are true? (Choose two.)

- A. For non-load balanced connections, packets forwarded by the cluster to the server contain the virtual MAC address of port2 as source.
- B. The traffic sourced from the client and destined to the server is sent to FGT-1.
- C. The cluster can load balance ICMP connections to the secondary.
- D. For load balanced connections, the primary encapsulates TCP SYN packets before forwarding them to the secondary.

Answer: AB

NEW QUESTION 41

You have enabled logging on your FortiGate device for Event logs and all Security logs, and you have set up logging to use the FortiGate local disk . What is the default behavior when the local disk is full?

- A. Logs are overwritten and the only warning is issued when log disk usage reaches the threshold of 95%.
- B. No new log is recorded until you manually clear logs from the local disk .
- C. Logs are overwritten and the first warning is issued when log disk usage reaches the threshold of 75%.
- D. No new log is recorded after the warning is issued when log disk usage reaches the threshold of 95%.

Answer: C

NEW QUESTION 44

Which statements about the firmware upgrade process on an active-active HA cluster are true? (Choose two.)

- A. The firmware image must be manually uploaded to each FortiGate.
- B. Only secondary FortiGate devices are rebooted.
- C. Uninterruptable upgrade is enabled by default.
- D. Traffic load balancing is temporally disabled while upgrading the firmware.

Answer: CD

NEW QUESTION 45

An administrator has configured two-factor authentication to strengthen SSL VPN access. Which additional best practice can an administrator implement?

- A. Configure Source IP Pools.
- B. Configure split tunneling in tunnel mode.
- C. Configure different SSL VPN realms.
- D. Configure host check .

Answer: D

NEW QUESTION 50

Which three options are the remote log storage options you can configure on FortiGate? (Choose three.)

- A. FortiCache
- B. FortiSIEM
- C. FortiAnalyzer
- D. FortiSandbox
- E. FortiCloud

Answer: BCE

NEW QUESTION 55

Which of the following are valid actions for FortiGuard category based filter in a web filter profile ui proxy-based inspection mode? (Choose two.)

- A. Warning
- B. Exempt
- C. Allow
- D. Learn

Answer: AC

NEW QUESTION 57

Which statement about the IP authentication header (AH) used by IPsec is true?

- A. AH does not provide any data integrity or encryption.
- B. AH does not support perfect forward secrecy.
- C. AH provides data integrity bur no encryption.
- D. AH provides strong data integrity but weak encryption.

Answer: C

NEW QUESTION 59

Refer to exhibit.

An administrator configured the web filtering profile shown in the exhibit to block access to all social networking sites except Twitter. However, when users try to access twitter.com, they are redirected to a FortiGuard web filtering block page.

The exhibit shows two configuration windows from a FortiGate device. The left window is for the 'FortiGuard Category Based Filter' with the name 'Allow_Twitter'. It shows a table of categories and their actions:

Name	Action
Medicine	Allow
News and Media	Allow
Social Networking	Block
Political Organizations	Allow
Reference	Allow
Global Religion	Allow
Shopping	Allow
Society and Lifestyles	Allow
Sports	Allow

The right window is for the 'Static URL Filter'. It shows a table of URLs and their actions:

URL	Type	Action	Status
twitter.com	Wildcard	Allow	Enable

Based on the exhibit, which configuration change can the administrator make to allow Twitter while blocking all other social networking sites?

- A. On the FortiGuard Category Based Filter configuration, set Action to Warning for Social Networking
- B. On the Static URL Filter configuration, set Type to Simple
- C. On the Static URL Filter configuration, set Action to Exempt.
- D. On the Static URL Filter configuration, set Action to Monitor.

Answer: C

NEW QUESTION 64

An administrator needs to increase network bandwidth and provide redundancy.
What interface type must the administrator select to bind multiple FortiGate interfaces?

- A. VLAN interface
- B. Software Switch interface
- C. Aggregate interface
- D. Redundant interface

Answer: C

NEW QUESTION 69

Which of the following SD-WAN load balancing method use interface weight value to distribute traffic? (Choose two.)

- A. Source IP
- B. Spillover
- C. Volume
- D. Session

Answer: CD

Explanation:

<https://docs.fortinet.com/document/fortigate/6.0.0/handbook/49719/configuring-sd-wan-load-balancing>

NEW QUESTION 73

.....

THANKS FOR TRYING THE DEMO OF OUR PRODUCT

Visit Our Site to Purchase the Full Set of Actual NSE4_FGT-7.2 Exam Questions With Answers.

We Also Provide Practice Exam Software That Simulates Real Exam Environment And Has Many Self-Assessment Features. Order the NSE4_FGT-7.2 Product From:

https://www.2passeasy.com/dumps/NSE4_FGT-7.2/

Money Back Guarantee

NSE4_FGT-7.2 Practice Exam Features:

- * NSE4_FGT-7.2 Questions and Answers Updated Frequently
- * NSE4_FGT-7.2 Practice Questions Verified by Expert Senior Certified Staff
- * NSE4_FGT-7.2 Most Realistic Questions that Guarantee you a Pass on Your FirstTry
- * NSE4_FGT-7.2 Practice Test Questions in Multiple Choice Formats and Updatesfor 1 Year