



Cisco

Exam Questions 350-901

Developing Applications using Cisco Core Platforms & APIs

About ExamBible

[Your Partner of IT Exam](#)

Found in 1998

ExamBible is a company specialized on providing high quality IT exam practice study materials, especially Cisco CCNA, CCDA, CCNP, CCIE, Checkpoint CCSE, CompTIA A+, Network+ certification practice exams and so on. We guarantee that the candidates will not only pass any IT exam at the first attempt but also get profound understanding about the certificates they have got. There are so many alike companies in this industry, however, ExamBible has its unique advantages that other companies could not achieve.

Our Advances

* 99.9% Uptime

All examinations will be up to date.

* 24/7 Quality Support

We will provide service round the clock.

* 100% Pass Rate

Our guarantee that you will pass the exam.

* Unique Gurantee

If you do not pass the exam at the first time, we will not only arrange FULL REFUND for you, but also provide you another exam of your claim, ABSOLUTELY FREE!

NEW QUESTION 1

An organization manages a large cloud-deployed application that employs a microservices architecture across multiple data centers. Reports have received about application slowness. The container orchestration logs show that faults have been raised in a variety of containers that caused them to fail and then spin up brand new instances.

Which two actions can improve the design of the application to identify the faults? (Choose two.)

- A. Automatically pull out the container that fails the most over a time period.
- B. Implement a tagging methodology that follows the application execution from service to service.
- C. Add logging on exception and provide immediate notification.
- D. Do a write to the datastore every time there is an application failure.
- E. Implement an SNMP logging system with alerts in case a network link is slow.

Answer: BC

NEW QUESTION 2

Where should distributed load balancing occur in a horizontally scalable architecture?

- A. firewall-side/policy load balancing
- B. network-side/central load balancing
- C. service-side/remote load balancing
- D. client-side/local load balancing

Answer: B

NEW QUESTION 3

Which statement about microservices architecture is true?

- A. Applications are written in a single unit.
- B. It is a complex application composed of multiple independent parts.
- C. It is often a challenge to scale individual parts.
- D. A single faulty service can bring the whole application down.

Answer: B

NEW QUESTION 4

Which two methods are API security best practices? (Choose two.)

- A. Use tokens after the identity of a client has been established.
- B. Use the same operating system throughout the infrastructure.
- C. Use encryption and signatures to secure data.
- D. Use basic auth credentials over all internal API interactions.
- E. Use cloud hosting services to manage security configuration.

Answer: AC

NEW QUESTION 5

A developer has completed the implementation of a REST API, but when it is executed, it returns a 401 error message. What must be done on the API to resolve the issue?

- A. Access permission to the resource must be granted, before the request.
- B. Configure new valid credentials.
- C. The requested API endpoint does not exist, and the request URL must be changed.
- D. Additional permission must be granted before the request can submitted.

Answer: D

NEW QUESTION 6

An application uses OAuth to get access to several API resources on behalf of an end user. What are two valid parameters to send to the authorization server as part of the first step of an authorization code grant flow? (Choose two.)

- A. URI to which the authorization server will send the user-agent back when access is granted or denied
- B. list of the API resources that the application is requesting to access
- C. secret that was generated by the authorization server when the application registered as an OAuth integration
- D. list of scopes that correspond to the API resources to which the application is requesting to access
- E. name of the application under which the application registered as an OAuth integration

Answer: AC

NEW QUESTION 7

The UCS Python SDK includes modules for Service Profile template creation. Which two UCS Service Profile template types are supported? (Choose two.)

- A. initial-template
- B. updating-template
- C. abstract-template
- D. attached-template

E. base-template

Answer: AB

NEW QUESTION 8

Which two types of storage are supported for app hosting on a Cisco Catalyst 9000 Series Switch? (Choose two.)

- A. external USB storage
- B. internal SSD
- C. CD-ROM
- D. SD-card
- E. bootflash

Answer: AB

NEW QUESTION 9

On a Cisco Catalyst 9300 Series Switch, the guest shell is being used to create a service within a container. Which change is needed to allow the service to have external access?

- A. Apply ip nat overload on VirtualPortGroup0.
- B. Apply ip nat inside on Interface VirtualPortGroup0.
- C. Apply ip nat outside on Interface VirtualPortGroup0.
- D. Apply ip nat inside on Interface GigabitEthernet1.

Answer: B

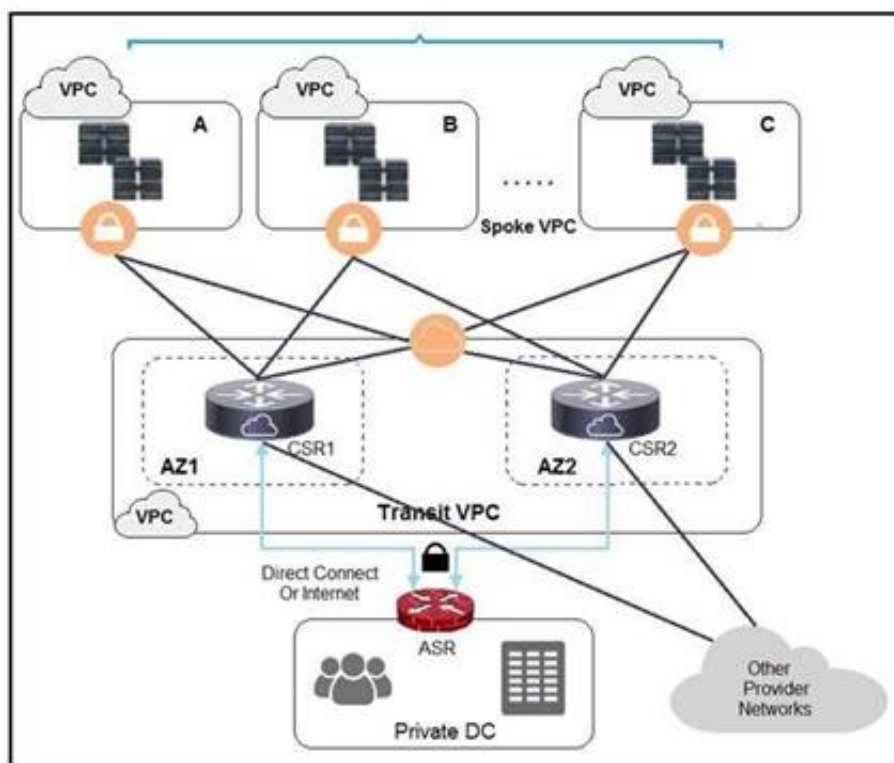
NEW QUESTION 10

There is a requirement to securely store unique usernames and passwords. Given a valid username, it is also required to validate that the password provided is correct. Which action accomplishes this task?

- A. Encrypt the username, hash the password, and store these values.
- B. Hash the username, hash the password, and store these values.
- C. Encrypt the username, encrypt the password, and store these values.
- D. Hash the username, encrypt the password, and store these values.

Answer: A

NEW QUESTION 10



Refer to the exhibit. A company has extended networking from the data center to the cloud through Transit VPC. Which two statements describe the benefits of this approach? (Choose two.)

- A. Dynamic routing combined with multi-AZ- deployment creates a robust network infrastructure.
- B. VPC virtual gateways provide highly available connections to virtual networks.
- C. Dedicated VPC simplifies load balancing by combining internal and external web services.
- D. VPC virtual gateways provide more secure connections to virtual networks.
- E. Dedicated VPC simplifies routing by not combining this service with other shared services.

Answer: BD

NEW QUESTION 13

Which two techniques protect against injection attacks? (Choose two.)

- A. input validation
- B. trim whitespace
- C. limit text areas to 255 characters

- D. string escaping of user free text and data entry
- E. only use dropdown, checkbox, and radio button fields

Answer: AE

NEW QUESTION 14

```
open_file = open("text_file.txt", "r")
read_file = open_file.read()
print(read_file)
```

Refer to the exhibit. a developer created the code, but it fails to execute. Which code snippet helps to identify the issue?

- A.

```
try:
    open_file = open("text_file.txt", "r")
    read_file = open_file.read()
    print(read_file)
except:
    print("File not there")
```
- B.

```
try:
    print("File not there")
except:
    open_file = open("text_file.txt", "r")
    read_file = open_file.read()
    print(read_file)
```
- C.

```
try:
    open_file = open("text_file.txt", "r")
    read_file = open_file.read()
    print(read_file)
except:
    print("File not there")
catch:
    error(read_file)
```
- D.

```
open_file = open("text_file.txt", "r")
read_file = open_file.read()
try:
    print(read_file)
except:
    print("File not there")
```

Answer: C

NEW QUESTION 15

An automated solution is needed to configure VMs in numerous cloud provider environments to connect the environments to an SDWAN. The SDWAN edge VM is provided as an image in each of the relevant clouds and can be given an identity and all required configuration via cloud-init without needing to log into the VM once online.

Which configuration management and/or automation tooling is needed for this solution?

- A. Ansible
- B. Ansible and Terraform
- C. NSO
- D. Terraform
- E. Ansible and NSO

Answer: E

NEW QUESTION 16

```
- name: Configure Interfaces
  with_items: "{{interfaces}}"
  netconf_config:
    <<: *host_info
    xml: |
      <config>
        <interfaces xmlns="urn:ietf:params:xml:ns:yang:ietf-interfaces">
          <interface>
            <name>{{item.interface_type}}{{item.interface_id}}</name>
            <description>{{item.description}}</description>
            <type xmlns:ianaift="urn:ietf:params:xml:ns:yang:iana-if-type">ianaift:ethernetCsmacd</type>
            <enabled>true</enabled>
            <ipv4 xmlns="urn:ietf:params:xml:ns:yang:ietf-ip">
              <address>
                <ip>{{item.ip_address}}</ip>
                <netmask>{{item.subnet_mask}}</netmask>
              </address>
            </ipv4>
          </interface>
        </interfaces>
      </config>
```

Refer to the exhibit. As part of the Ansible playbook workflow, several new interfaces are being configured using the netconf_config module. The task references the interface variables that are unique per device. In which directory is the YAML file with these variables found?

- A. host_vars directory
- B. home directory
- C. group_vars directory
- D. current working directory

Answer: A

NEW QUESTION 21

A developer needs to configure an environment to orchestrate and configure. Which two tools should be used for each task? (Choose two.)

- A. Puppet for orchestration
- B. Terraform for orchestration
- C. Terraform for configuration
- D. Ansible for orchestration
- E. Ansible for configuration

Answer: BE

NEW QUESTION 26

.....

Relate Links

100% Pass Your 350-901 Exam with ExamBible Prep Materials

<https://www.exambible.com/350-901-exam/>

Contact us

We are proud of our high-quality customer service, which serves you around the clock 24/7.

Viste - <https://www.exambible.com/>