



**Cisco**

## **Exam Questions 500-220**

Engineering Cisco Meraki Solutions

#### NEW QUESTION 1

Which information do the MXs in a High Availability pair share?

- A. spanning-tree state
- B. time synchronization state
- C. DHCP association database
- D. stateful firewall database

**Answer:** A

#### NEW QUESTION 2

One thousand concurrent users stream video to their laptops. A 30/70 split between 2.4 GHz and 5 GHz is used. Based on client count, how many APs (rounded to the nearest whole number) are needed?

- A. 26
- B. 28
- C. 30
- D. 32

**Answer:** C

#### NEW QUESTION 3

What happens to an unsupervised iOS device when the “Meraki management” profile is removed?

- A. The “Meraki management” profile is remove
- B. All configuration profiles that Systems Manager pushed remain.
- C. The “Meraki management” profile is remove
- D. All configuration profiles that Systems Manager pushed are also removed.
- E. The “Meraki management” profile is removed and then pushed automatically by Systems Manager.
- F. The “Meraki management” profile cannot be removed.

**Answer:** B

#### NEW QUESTION 4

What are two roles of the network and device tags in a Dashboard? (Choose two.)

- A. Tags enable administrators to configure a combination of network and device specific tags to create summary reports filtered for specific devices across multiple networks.
- B. Network tags can be used to assign networks to separate Auto VPN domains in an Organization with many networks.
- C. Network tags can be used to simplify the assignment of network-level permissions in an Organization with many networks.
- D. Device tags can be used to simplify the assignment of device-level permissions in an Organization with many administrators.
- E. Device tags can be assigned to MR APs to influence the gateway selection for repeaters in a mesh wireless network.

**Answer:** AE

#### NEW QUESTION 5

Which two actions can extend the video retention of a Cisco Meraki MV Smart Camera? (Choose two.)

- A. enabling audio compression
- B. installing an SSD memory extension
- C. enabling motion-based retention
- D. enabling maximum retention limit
- E. configuring a recording schedule

**Answer:** CE

#### NEW QUESTION 6

What is the best practice Systems Manager enrollment method when deploying corporate-owned iOS devices?

- A. manual
- B. Apple Configurator
- C. Sentry enrollment
- D. DEP

**Answer:** B

#### NEW QUESTION 7

Drag and drop the steps from the left into the sequence on the right to manage device control, according to Cisco Meraki best practice.

enroll	1
create profile	2
add settings profile	3
define tags	4
apply profile	5

- A. Mastered

B. Not Mastered

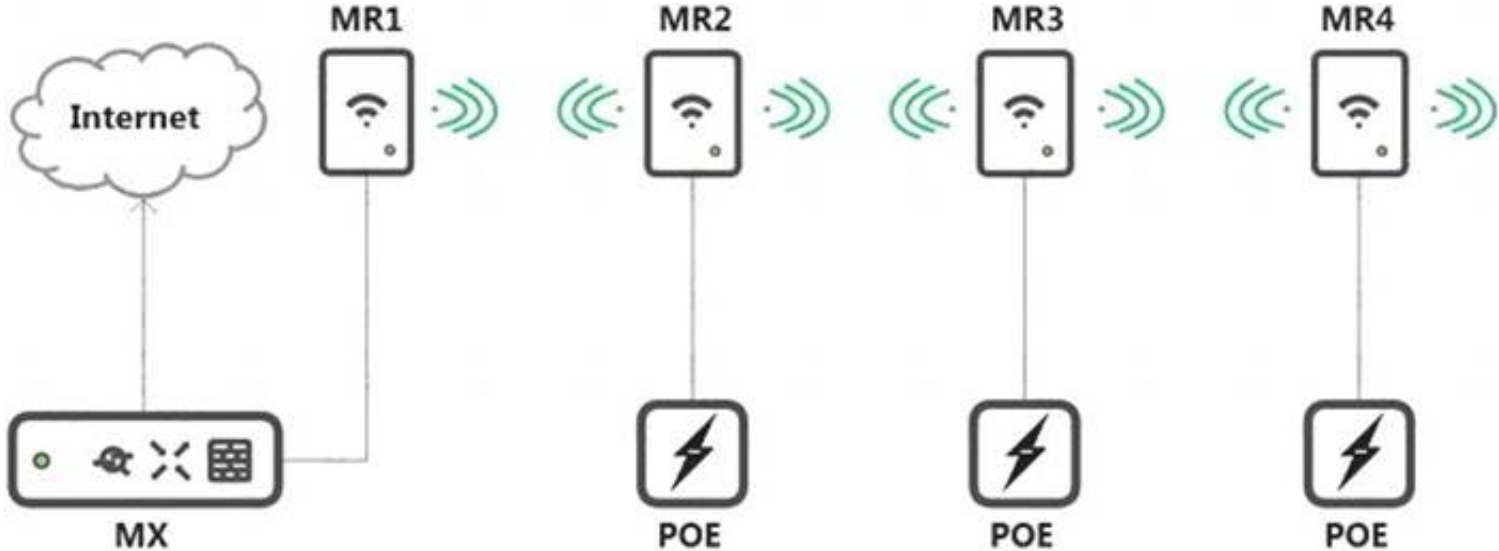
Answer: A

Explanation:

Table Description automatically generated with medium confidence

NEW QUESTION 8

Refer to the exhibit.



Which design recommendation should be considered?

- A. A 25-percent throughput loss occurs for every ho

B. Cisco Meraki best practice recommends a 1-hop maximum.

C. A 25-percent throughput loss occurs for every ho

D. Cisco Meraki best practice recommends a 2-hop maximum.

E. A 50-percent throughput loss occurs for every ho

F. Cisco Meraki best practice recommends a 1-hop maximum.

G. A 50-percent throughput loss occurs for every ho

H. Cisco Meraki best practice recommends a 2-hop maximum.

Answer: A

NEW QUESTION 9

What occurs when a configuration change is made to an MX network that is bound to a configuration template?

- A. The configuration change in the bound network is combined with the template configuration inside the template.

B. The more restrictive configuration is preferred.

C. The configuration change in the bound network overrides the template configuration.

D. The template configuration overrides the configuration change in the bound network.

Answer: A

NEW QUESTION 10

Refer to the exhibit.

Route table

SUBNET	NAME	TYPE	SORT BY
Search by subnet	Search by name	All	Priority
Subnet	Name	Type	Next hop
10.115.32.0/28	Store 1532 – appliance: MGMT	Meraki VPN: VLAN	Peer: Store 1532 – appliance
10.116.32.0/28	Store 1532 – appliance: DATA	Meraki VPN: VLAN	Peer: Store 1532 – appliance
192.39.2.28/32	External	BGP	10.128.124.62
192.168.70.8/29	MSP NOC	IPSec Peer	4.99.111.99
192.168.70.0/29	MSP NOC	IPSec Peer	4.100.99.100
192.39.228.0/24	External	BGP	10.128.124.62
192.168.0.0/16	External	BGP	10.128.124.62

A packet arrives on the VPN concentrator with source IP 10.168.70.3 and destined for IP 10.116.32.4. What is the next hop for the packet, based on this concentrator routing table?

- A. The concentrator gateway (10.128.124.62) is the next hop.
- B. Not enough detail is available to determine the next hop.
- C. The packet is stopped.
- D. The Auto VPN peer “Store 1532 – appliance” is the next hop.

Answer: B

NEW QUESTION 10

Drag and drop the descriptions from the left onto the corresponding MX operation mode on the right.

The MX appliance acts as a layer 2 bridge

This mode is the default mode of operation

DHCP services can be configured on the MX appliance

VLANs cannot be configured

This mode is generally also the default gateway for devices on the LAN

This mode is not recommended at the network perimeter

No address translation is provided

Client traffic to the internet has the source IP rewritten to match the WAN IP of the appliance

Routed mode

Passthrough mode

- A. Mastered
- B. Not Mastered

Answer: A

Explanation:  
Graphical user interface, table Description automatically generated with medium confidence

NEW QUESTION 15

Which two features and functions are supported when using an MX appliance in Passthrough mode? (Choose two.)

- A. intrusion prevention
- B. site-to-site VPN
- C. secondary uplinks
- D. DHCP
- E. high availability

Answer: AB

NEW QUESTION 17

Refer to the exhibit.

Outbound rules	#	Policy	Protocol	Source	Src port	Destination	Dst port	Comment	Logging	Hits	Actions
		Allow	Any	Any	Any	Any	Any	Default rule	Enabled	2	
<a href="#">Add a rule</a>											

Which outcome occurs when logging is set to Enabled?

- A. Outbound flows are sent to a configured syslog server if a syslog sender is configured for flows.
- B. The hits counter within this section is now enabled.
- C. This firewall rule is now enabled.
- D. Inbound flows are sent to a configured syslog server if a syslog server configured for flows.

**Answer: D**

#### NEW QUESTION 21

Which type of authentication protocol is used when using OSPF on an MX appliance?

- A. MD5
- B. certificate
- C. plaintext
- D. SHA-1

**Answer: A**

#### NEW QUESTION 24

Which order is accurate for a firmware upgrade on MX appliances in a high-availability configuration?

- A. starts on the secondary MX appliance and then occurs on the primary MX appliance
- B. starts on both MX appliances at the same time and then reboots both appliances after traffic on the primary MX appliance ceases
- C. starts on both MX appliances at the same time and then immediately reboots both appliances
- D. starts on the primary MX appliance and then occurs on the secondary MX appliance

**Answer: D**

#### NEW QUESTION 26

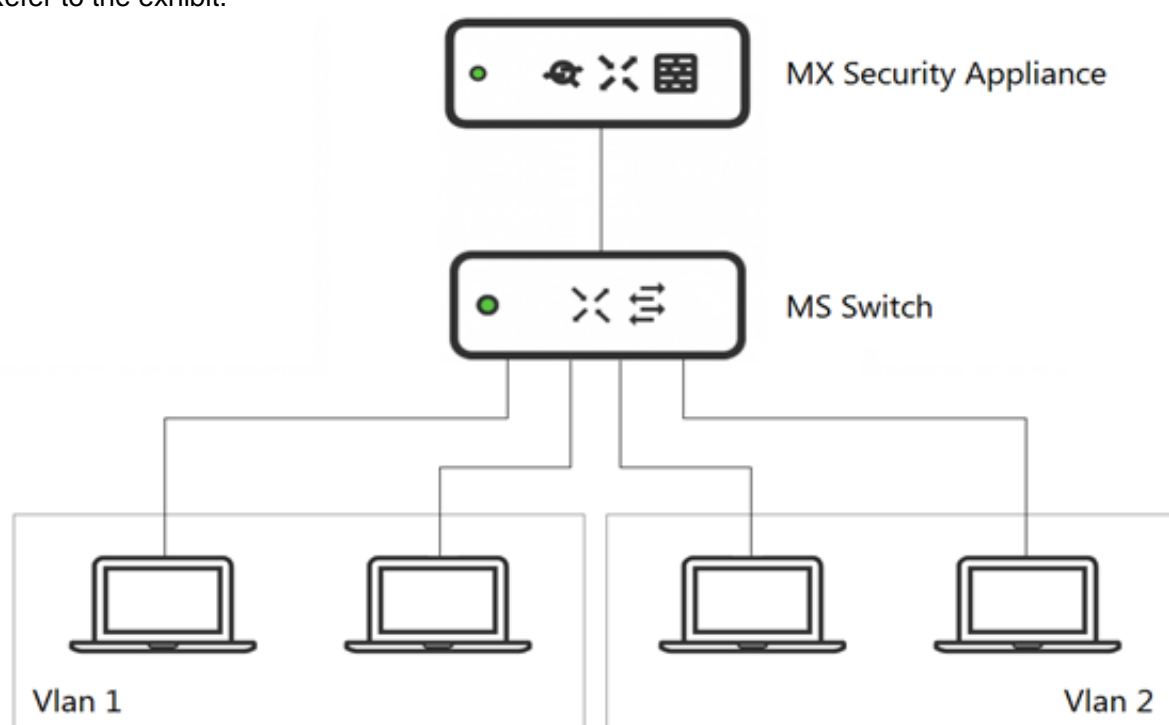
For which two reasons can an organization become "Out of License"? (Choose two.)

- A. licenses that are in the wrong network
- B. more hardware devices than device licenses
- C. expired device license
- D. licenses that do not match the serial numbers in the organization
- E. MR licenses that do not match the MR models in the organization

**Answer: BC**

#### NEW QUESTION 28

Refer to the exhibit.



What is an advantage of implementing inter-VLAN routing on an MX Security Appliance rather than performing inter-VLAN routing on an MS Series Switch?


- A. The MX appliance performs IDS/IPS for inter-VLAN traffic.
- B. The MX appliance performs AMP for inter-VLAN traffic.
- C. The MX appliance performs data encryption for inter-VLAN traffic.
- D. The MX appliance performs content filtering for inter-VLAN traffic.

**Answer: C**



NEW QUESTION 31

Refer to the exhibit.



NETWORK

EMEAR-TRAINER-DEMO

Network-wide

Security & SD-WAN

Switch

Wireless

Cameras

Insight

Organization

SD-WAN & traffic shaping

Uplink configuration

WAN 1

4 Gbps

[details](#)

WAN 2

4 Gbps

[details](#)

Cellular

Unlimited

[details](#)

Uplink statistics

Test connectivity to	Description	Default	Actions
8.8.8.8	Google	<input checked="" type="radio"/>	<a href="#">×</a>
<a href="#">Add a destination</a>			

List update interval

WAN 1

Hourly

WAN 2

Hourly

Cellular

Hourly

[simple](#)

Uplink selection

Global preferences

Primary uplink

WAN 1

Load balancing

☐ Enabled

☒ Disabled

Flow preferences

Internet traffic

There are no uplink preferences for Internet traffic configured on this network.

[Add a preference](#)

Which two actions are required to optimize load balancing asymmetrically with a 4:1 ratio between links? (Choose two.)

- A. Change the primary uplink to "none".
- B. Add an internet traffic preference that defines the load-balancing ratio as 4:1.
- C. Enable load balancing.
- D. Set the speed of the cellular uplink to zero.
- E. Change the assigned speeds of WAN 1 and WAN 2 so that the ratio is 4:1.

Answer: BC

NEW QUESTION 34

Which VLAN is used to source pings across the site-to-site VPN when using the MX Live tools?

- A. highest VLAN ID that is configured and set to NO to use VPN
- B. lowest VLAN ID that is configured and set to YES to use VPN
- C. highest VLAN ID that is configured and set to YES to use VPN
- D. lowest VLAN ID configured and set to NO to use VPN

Answer: C

NEW QUESTION 35

A new application needs to be pushed to all iOS devices. Some devices report “NotNow” in the event log and do not install the application. What does the “NotNow” event indicate?

- A. The application requires the most recent iOS version.
- B. The device is locked with a passcode.
- C. The device cannot connect to Apple servers.
- D. The device cannot connect to Cisco Meraki servers.

Answer: B

NEW QUESTION 40

Where should a network admin navigate to investigate wireless mesh information between Meraki APs?

- A. Wireless > Monitor > Access Points > AP > RF
- B. Wireless > Configure > Radio Settings
- C. Wireless > Monitor > Wireless Health
- D. Wireless > Monitor > RF Spectrum

Answer: A

NEW QUESTION 43

Refer to the exhibit.

Uplink selection

Global preferences

Primary uplink

WAN 1

Load balancing

Enabled

Traffic will be spread across both uplinks in the proportions specified above.  
Management traffic to the Meraki cloud will use the primary uplink.

Disabled

All Internet traffic will use the primary uplink unless overridden by an uplink preference or if the primary uplink fails.

Active-Active AutoVPN

Enabled

Create VPN tunnels over all of the available uplinks (primary and secondary).

Disabled

Do not create VPN tunnels over the secondary uplink unless the primary uplink fails.

Flow preferences

Internet traffic

There are no uplink preferences for Internet traffic configured on this network.

[Add a preference](#)

SD-WAN policies

VPN traffic

There are no uplink preferences for VPN traffic configured on this network.

[Add a preference](#)

Custom performance classes

Name	Maximum latency (ms)	Maximum jitter (ms)	Maximum loss (%)	Actions
VoIP	150	(none)	(none)	×

[Create a new custom performance class](#)

What does the MX Security Appliance send to determine whether VPN traffic exceeds the configured latency threshold in the VoIP custom performance class?

- A. 1000-byte TCP probes every second, through VPN tunnels that are established over the primary WAN link.
- B. 100-byte UDP probes every second, through VPN tunnels that are established over every WAN link.
- C. 100-byte UDP probes every second, through VPN tunnels that are established over the primary WAN link.
- D. 1000-byte TCP probes every second, through VPN tunnels that are established over every WAN link.

Answer: D

NEW QUESTION 47

The VPN concentrator is experiencing issues. Which action should be taken to ensure a stable environment?

● Corp MX 1

MX450

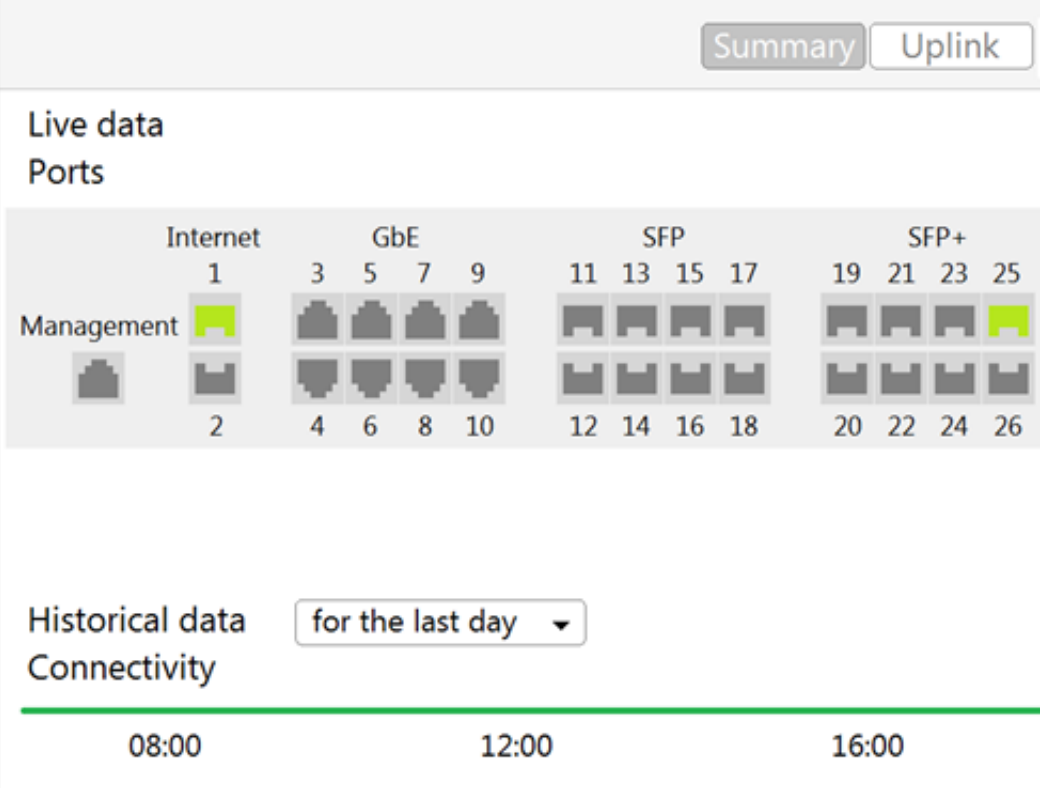
PRIMARY



ADDRESS

PRIMARY

Current master



- A. Add a deny any/any firewall rule to the end of the firewall rules.
- B. Remove the connection from Internet 1.
- C. Physically disconnect all LAN ports.
- D. Configure the MX appliance to Routed mode on the Addressing & VLANS page.

Answer: C

NEW QUESTION 48

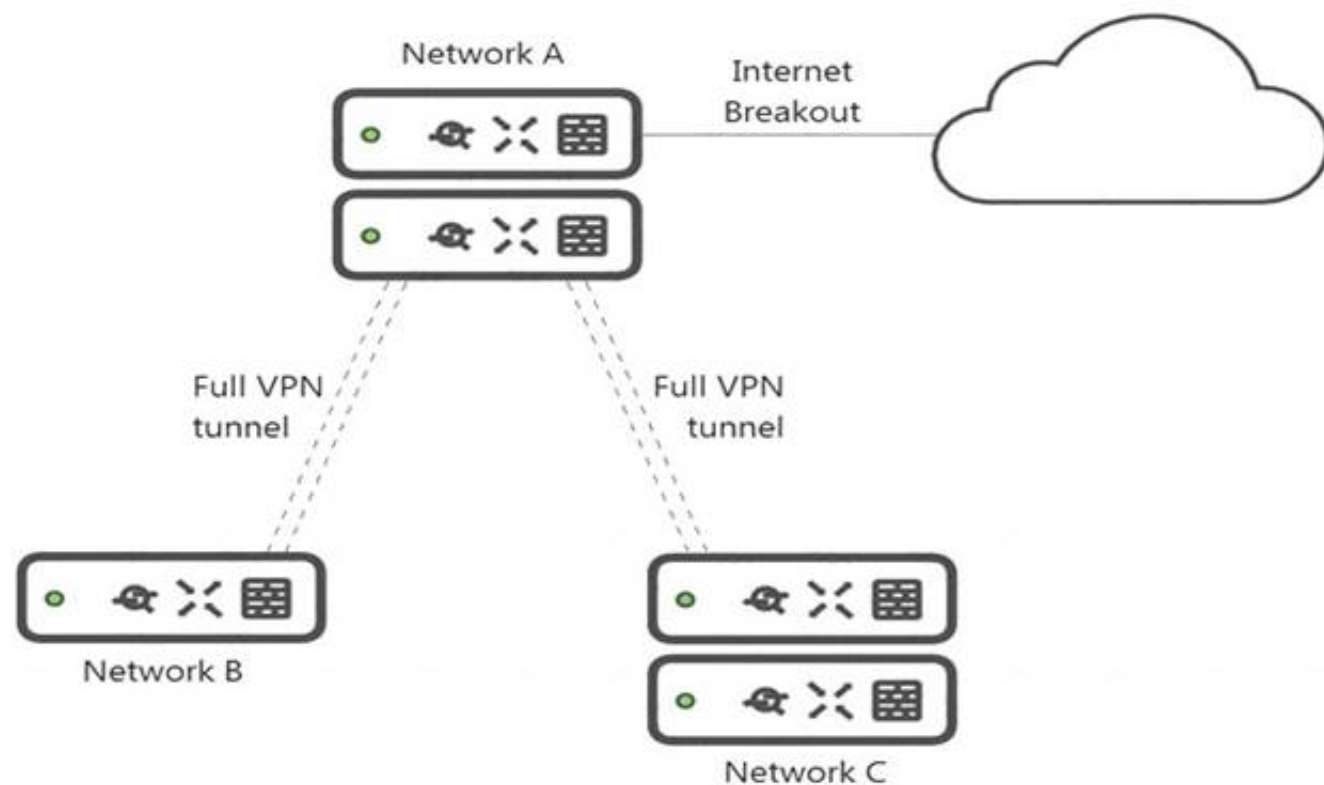
Which Cisco Meraki product must be deployed in addition to Systems Manager so that Systems Manager Sentry enrollment can be used?

- A. MS Switch
- B. Meraki Insight
- C. MR Access Point
- D. MV Smart Camera

Answer: C

#### NEW QUESTION 49

Refer to the exhibit.



What is the minimal Cisco Meraki Insight licensing requirement?

- A. A single Meraki Insight license must be configured on network A to gain Web App Health visibility on network B.
- B. A single Meraki Insight license must be configured on network B to gain Web App Health visibility on network B.
- C. A single Meraki Insight license must be configured on network A, and a single license must be configured on network B, to gain Web App Health visibility on network B.
- D. Two Meraki Insight licenses must be configured on network A to gain Web App Health visibility on network B.
- E. Two Meraki Insight licenses must be configured on network A and a single license must be configured on network B, to gain Web App Health visibility on network B.

Answer: E

#### NEW QUESTION 51

Company iPads are enrolled in Systems Manager without supervision, and profiles are pushed through Systems Manager. Which outcome occurs when a user attempts to remove the “Meraki Management” profile on an iPad?

- A. The “Meraki Management” profile cannot be removed.
- B. The “Meraki Management” profile is removed and then pushed automatically by Systems Manager.
- C. The “Meraki Management” profile is remove
- D. All the profiles that Systems Manager pushed are also removed.
- E. The “Meraki Management” profile is remove
- F. All the profiles Systems Manager pushed remain.

Answer: C

#### NEW QUESTION 55

Which Meraki Dashboard menu section is accessed to enable Sentry enrollment on an SSID?

- A. Wireless > Configure > Access Control
- B. Wireless > Configure > Splash page
- C. Wireless > Configure > Firewall & Traffic Shaping
- D. Wireless > Configure > SSIDs

Answer: A

#### NEW QUESTION 59

A customer requires a hub-and-spoke Auto VPN deployment with two NAT-mode hubs with dual uplink connections and 50 remote sites with a single uplink connection.

How many tunnels does each hub need to support?

- A. 52
- B. 54
- C. 100
- D. 104

Answer: C

#### NEW QUESTION 64

.....



## Thank You for Trying Our Product

### We offer two products:

1st - We have Practice Tests Software with Actual Exam Questions

2nd - Questions and Answers in PDF Format

### 500-220 Practice Exam Features:

- \* 500-220 Questions and Answers Updated Frequently
- \* 500-220 Practice Questions Verified by Expert Senior Certified Staff
- \* 500-220 Most Realistic Questions that Guarantee you a Pass on Your First Try
- \* 500-220 Practice Test Questions in Multiple Choice Formats and Updates for 1 Year

**100% Actual & Verified — Instant Download, Please Click**  
**[Order The 500-220 Practice Test Here](#)**