

# Cisco

## Exam Questions 350-601

Implementing and Operating Cisco Data Center Core Technologies



#### NEW QUESTION 1

A network administrator must configure an extra keyring in Cisco UCS Manager. The key must provide a high level of encryption and secure authentication when users use the web interface. Which configuration command set must be applied to meet these requirements?

- ☒ `set https keyring kring7984`  
`set https cipher-suite-mode secure`  
`set https ssl-protocol tls1-2`  
`commit-buffer`
- ☐ `set https keyring kring7984`  
`set https cipher-suite-mode secure`  
`set https tls-protocol tls1-2`  
`commit-buffer`
- ☐ `set https keyring kring7984`  
`set https cipher-suite-mode high`  
`set https ssl-protocol tls1-2#`  
`commit-buffer`
- ☐ `set https keyring kring7984`  
`set https cipher-suite-mode high`  
`set https tls-protocol tls1-2`  
`commit-buffer`

- A. Option A
- B. Option B
- C. Option C
- D. Option D

**Answer: C**

#### Explanation:

[https://www.cisco.com/c/en/us/td/docs/unified\\_computing/ucs/ucs-manager/CLI-User-Guides/Admin-Managem](https://www.cisco.com/c/en/us/td/docs/unified_computing/ucs/ucs-manager/CLI-User-Guides/Admin-Managem) "cipher-suite-mode secure" is invalid command. "Cipher-suite-mode high" is valid command. "tls-protocol tls1-2" is invalid command. "Ssl-protocol tls1-2" is valid command.

```
UCS-A# scope system
UCS-A /system # scope services
UCS-A /system/services # enable https
UCS-A /system/services* # set https port 443
Warning: When committed, this closes all the web sessions.
UCS-A /system/services* # set https keyring kring7984
UCS-A /system/services* # set https cipher-suite-mode high
UCS-A /system/services* # set https ssl-protocol tls1-2
UCS-A /system/services* # commit-buffer
UCS-A /system/services #
```

#### NEW QUESTION 2

An engineer must configure HSRP protocol on two Cisco Nexus 9000 Series Switches running a virtual port channel. In addition, the HSRP implementation must meet these requirements:

- It must allow more than 500 groups.
- switch 1 must act as the primary switch.
- Both switches must use a user-defined hardware address.

Drag and drop the commands from the right to complete a configuration of the HSRP on the left. The commands are used more than once. Not all commands are used.

<pre>! switch1  interface vlan300 ip 209.165.200.226/27 hsrp 300  </pre>	<input type="text" value="mac-address 6000.6000.6000"/>
<pre>ip 209.165.200.225  </pre>	<input type="text" value="hsrp version 1"/>
<pre>! switch2  interface vlan300 ip 209.165.200.227/27 hsrp 300  </pre>	<input type="text" value="priority 255"/>
<pre>  </pre>	<input type="text" value="hsrp use-bia"/>
<pre>ip 209.165.200.225  </pre>	<input type="text" value="priority 100"/>
<pre>  </pre>	<input type="text" value="hsrp version 2"/>

- A. Mastered  
B. Not Mastered

Answer: A

**Explanation:**

Switch 1:  
Box 1 = hsrp version 2  
Box 2 = priority 100  
Box 3 = mac-address 6000.6000.6000  
Switch 2:  
Box 1 = hsrp version 2  
Box 2 = priority 255  
Box 3 = mac-address 6000.6000.6000

**NEW QUESTION 3**

Refer to the exhibit.

```
UCS-A# scope eth-traffic-mon
UCS-A /eth-traffic-mon # scope fabric a
UCS-A /eth-traffic-mon/fabric # create eth-mon-session Monitor33
UCS-A /eth-traffic-mon/fabric/eth-mon-session/dest-interface* #
commit-buffer
UCS-A /eth-traffic-mon/fabric/eth-mon-session/dest-interface #

UCS-A# scope service-profile org / serviceprofile1
UCS-A /org/service-profile # scope vnic ether-dynamic-prot-008
UCS-A /org/service-profile/vnic # create mon-src Monitor23
UCS-A /org/service-profile/vnic/mon-src* # commit-buffer
UCS-A /org/service-profile/vnic/mon-src #

UCS-A# scope eth-traffic-mon
UCS-A /eth-traffic-mon # scope fabric a
UCS-A /eth-traffic-mon/fabric # scope eth-mon-session Monitor33
UCS-A /eth-traffic-mon/fabric/eth-mon-session # enable
UCS-A /eth-traffic-mon/fabric/eth-mon-session* # commit-buffer
```

Service degradation is reported on a VM that is deployed on a Cisco UCS blade server. The traffic from the vNIC is required to SPAN in both directions to a packet analyzer that is connected to UCS-A slot 2 port 12. Which two commands are needed to complete the configuration? (Choose two.)

- A. UCS-A /org/service-profile/vnic/mon-src\* # set direction both  
B. UCS-A /eth-traffic-mon/fabric/eth-mon-session' # create dest-interface 2 12  
C. UCS-A /org/service-profile/vnic/mon-src\* # set direction receive transmit  
D. UCS-A /eth-traffic-mon/fabric/eth-mon-session # activate  
E. UCS-A /eth-traffic-mon/fabric/eth-mon-session\* # create eth-mon-session/dest-interface 2 12

Answer: AB

**Explanation:**

[https://www.cisco.com/en/US/docs/unified\\_computing/ucs/sw/cli/config/guide/1.4.1/CLI\\_Config\\_Guide\\_1\\_4\\_1\\_chapter42.html](https://www.cisco.com/en/US/docs/unified_computing/ucs/sw/cli/config/guide/1.4.1/CLI_Config_Guide_1_4_1_chapter42.html)

#### NEW QUESTION 4

An engineer deploys a custom Guest Shell rootfs on a Nexus 9000 Series Switch. Drag and drop the steps from the left into the order required to deploy the solution on the right. Not all options are used.

Customize the guest shell rootfs.	Step 1
Export the Guest Shell rootfs.	Step 2
Store it in a file server.	Step 3
Import the Guest Shell rootfs to other switches.	Step 4
Install the specific Guest Shell across devices simultaneously.	Step 5

- A. Mastered  
B. Not Mastered

**Answer:** A

#### Explanation:

A picture containing text Description automatically generated

<https://www.cisco.com/c/en/us/td/docs/switches/datacenter/nexus9000/sw/93x/programmability/guide/b-cisco-ne>

### Replicating the Guest Shell

Beginning with Cisco NX-OS release 7.0(3)I7(1), a Guest Shell rootfs that is customized on one switch can be deployed onto multiple switches.

The approach is to <sup>1</sup>customize and then <sup>2</sup>export the Guest Shell rootfs and <sup>3</sup>store it on a file server. A POAP script can <sup>4</sup>download (import) the Guest Shell rootfs to other switches and <sup>5</sup>install the specific Guest Shell across many devices simultaneously.

- Exporting Guest Shell rootfs
- Importing Guest Shell rootfs
- Importing YAML File
- show guestshell Command

#### NEW QUESTION 5

A company is investigating different options for IT automation tools. The IT team has experience with python programming language and scripting using a declarative language. The proposed tool should be easy to set up and should not require installing an agent on target devices. The team will also need to build custom modules based on the python programming language to extend the tools functionality. Which automation tool should be used to meet these requirements?

- A. Puppet  
B. Ansible  
C. NX-API  
D. Chef

**Answer:** B

#### NEW QUESTION 6

A network administrator is creating a custom Django self-service portal that runs on a Linux server to automate the creation of new VLANs on Cisco UCS Manager. Which feature must be installed and configured on the server?

- A. Cisco ucs Powertool Suite  
B. Cisco DNA Center API  
C. Cisco AppDynamics  
D. Cisco UCS Python SDK

**Answer:** C

#### NEW QUESTION 7

What is a feature of NFS?

- A. role-based access control  
B. Kerberos-based security model  
C. block-based file access



D. zone-based access control

**Answer: B**

**Explanation:**

<https://www.cisco.com/c/en/us/support/docs/security-vpn/kerberos/16087-1.html#modifiednfs>

### Kerberos Security Implications of the Modified NFS

This implementation is not completely secure. For starters, user data is still sent across the network in an unencrypted, and therefore interceptable, form. The low-level, per-transaction authentication is based on a <CLIENT-IP-ADDRESS, CLIENT-UID> pair provided unencrypted in the request packet. This information could be forged and thus security compromised. However, it should be noted that only while a user is actively using her/his files (that is, while logged in) are valid mappings in place and therefore this form of attack is limited to when the user in question is logged in. When a user is not logged in, no amount of IP address forgery will permit unauthorized access to her/his files.

### NEW QUESTION 8

An engineer configures port security on a Cisco MDS 9000 Series Switch. The MDS switch configuration must meet these requirements

- The switch must inmate the VSAN 4 port security database despite any conflicts.
- New devices must be statically added to the switch.
- Configuration changes for VSAN 4 must be applied throughout the fabric with any lodes on the fabric released

Which configuration set meets these requirements?

- ☐ port-security activate vsan 4  
no port-security auto-learn vsan 4  
port-security allocate  
port-security commit vsan 4
- ☐ port-security activate vsan 4  
port-security manual-learn vsan 4  
port-security allocate  
port-security commit
- ☐ port-security activate vsan 4 force  
port-security auto-learn vsan 4  
port-security distribute  
port-security commit
- ☐ port-security activate vsan 4 force  
no port-security auto-learn vsan 4  
port-security distribute  
port-security commit vsan 4

- A. Option A
- B. Option B
- C. Option C
- D. Option D

**Answer: D**

### NEW QUESTION 9

A storage array must be connected to port ethernet1/10 on a Cisco MDS 9000 Series Switch In addition, the array must connect using the FCoE protocol and be single-homed Which configuration meets these requirements?

- ☒ **vlan database**  
vlan 101 fcoe  
vsan 101 enable  
interface vfc 10 vsan 101
- interface vfc 10**  
switchport mode fcoe  
switchport access vlan 101  
bind interface ethernet1/10
- ☒ **vlan database**  
vlan 101 vsan  
vsan 101 fcoe  
vsan 101 interface vfc 10
- interface ethernet1/10**  
switchport mode trunk  
bind interface vfc 10  
fcoe vsan 101
- ☐ **vsan database**  
vlan 101  
vsan 101  
fcoe vsan 101 interface vfc 10
- interface 1/10**  
switchport mode e  
fcoe vfc 10
- ☐ **interface vfc 10**  
switchport mode f  
bind interface ethernet 1/10
- vsan database**  
vsan 101  
vlan 101  
fcoe vsan 101  
vsan 101 interface vfc 10

- A. Option A  
B. Option B  
C. Option C  
D. Option D

**Answer:** D

#### NEW QUESTION 10

Which component is upgraded by using an EPLD upgrade on a Cisco Nexus 9000 Series Switch?

- A. dual-homed fabric extenders  
B. BIOS  
C. field-programmable gate arrays  
D. ISSU of the NX-OS version

**Answer:** C

#### NEW QUESTION 10

Which configuration generates a syslog message when CPU utilization is higher than 60%?

- A. event manager applet HIGH-CPUevent snmp oid 1.3.6.1.4.1.9.9.109.1.1.1.1.6.1 get-type exact entry-op gt 60 poll-interval 5 action 1.0 syslog priority notifications msg "cpu high"
- B. event manager applet HIGH-CPUevent snmp oid 1.3.6.1.4.1.9.9.109.1.1.1.1.6.1 get-type exact entry-op lt 60 poll-interval 5 action 1.0 syslog priority notifications msg "cpu high"
- C. event manager applet HIGH-CPUevent snmp oid 1.3.6.1.4.1.9.9.109.1.1.1.1.6.1 get-type next entry-op gt 60 poll-interval 5 action 1.0 syslog priority notifications msg "cpu high"
- D. event manager applet HIGH-CPUevent snmp oid 1.3.6.1.4.1.9.9.109.1.1.1.1.6.1 get-type next entry-op lt 60 poll-interval 5 action 1.0 syslog priority notifications msg "cpu high"

**Answer:** A

#### Explanation:

<https://www.cisco.com/c/en/us/support/docs/ip/internet-protocol-ip/200931-EEM-Subsystem-in-Order-to-Monitor-CPU-Tr.pdf>  
<https://blog.ipspace.net/2008/06/generate-snmp-trap-on-high-cpu-load.html>

#### NEW QUESTION 13

An engineer must implement a disaster recovery policy for the Cisco UCS infrastructure. The solution must meet these criteria:

- The Recovery Point Objective must be 48 hours.
- The backup must use encrypted transmission.
- The Recovery Time Objective must be 4 hours.

Which configuration set must be used in the scheduled backup to meet these requirements?

- ☒ Protocol: SFTP  
Schedule: Weekly
- ☐ Protocol: FTP  
Schedule: Bi-Weekly
- ☐ Protocol: TFTP  
Schedule: Bi-Weekly
- ☐ Protocol: SCP  
Schedule: Daily

- A. Option A
- B. Option B
- C. Option C
- D. Option D

**Answer:** D

#### NEW QUESTION 17

Which two protocols are used by the NFSv4 protocol? (Choose two.)

- A. FCP
- B. TCP
- C. UDP
- D. Ethernet
- E. IP

**Answer:** BE

#### NEW QUESTION 19

Which data structure results from running this Python code?

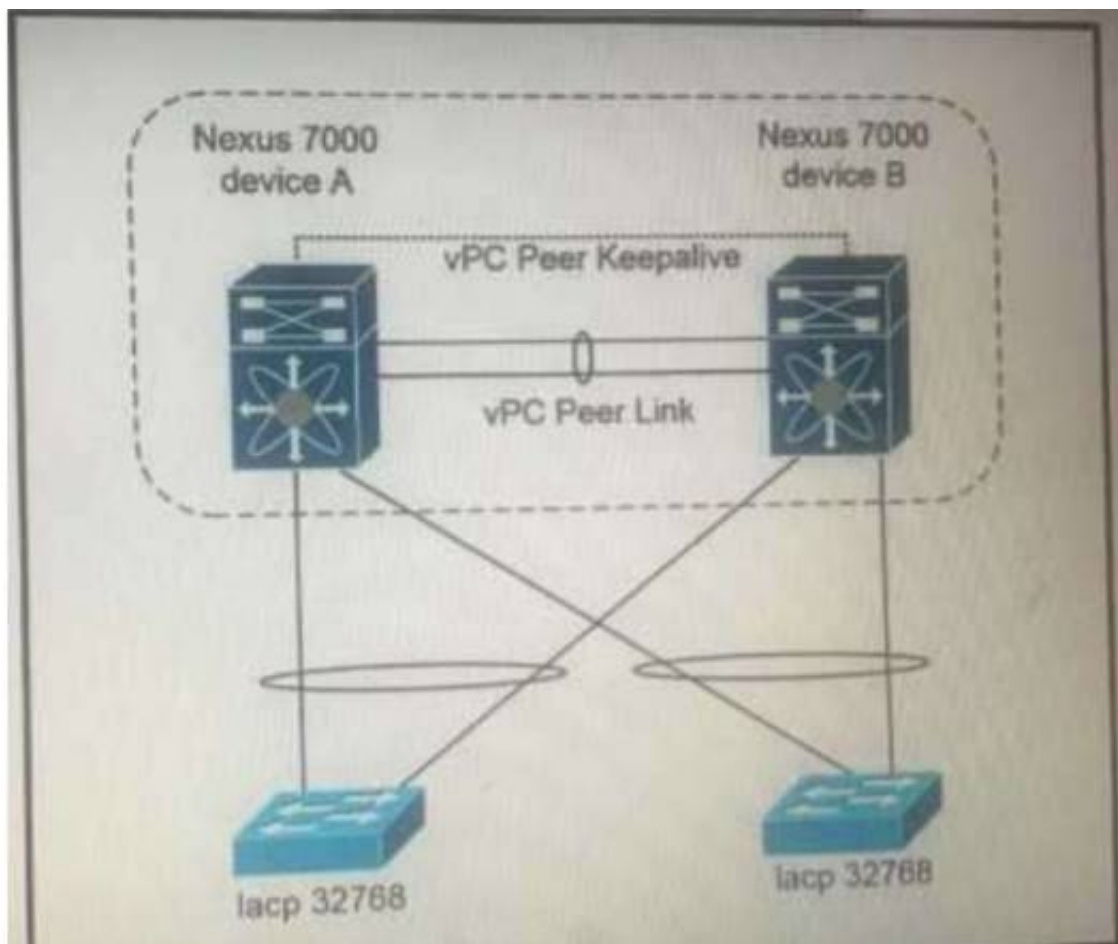
```
>>> import json
>>> f = open('fname.json', 'r')
>>> var1 = json.load(f)
>>> var1
{'u'bd': u'bd1', u'ap': {u'epgs': [{u'name': u'app'}, {u'name': u'web'}, {u'name': u'db'}]}, u'name': u'OnlineStore', u'name': u'39233259', u'pvn': u'pvn1'}
```

- A. tuple
- B. dictionary
- C. set
- D. list

**Answer:** B

#### NEW QUESTION 22

Refer to the exhibit.



Which configuration ensure that the cisco Nexus 7000 series switches are the primary devices for LACP?

- A. `N7K_A(config-vpc-domain)# system-priority 4000`  
`N7K_B(config-vpc-domain)# system-priority 4000`
- B. `N7K_A(config-vpc-domain)# system-priority 100`  
`N7K_B(config-vpc-domain)# system-priority 200`
- C. `N7K_A(config-vpc-domain)# system-priority 32768`  
`N7K_B(config-vpc-domain)# system-priority 32768`
- D. `N7K_A(config-vpc-domain)# role priority 1`  
`N7K_B(config-vpc-domain)# role priority 2`

- A. Option A
- B. Option B
- C. Option C
- D. Option D

**Answer: C**

#### NEW QUESTION 24

An engineer needs to create a new user in the local user database on Cisco UCS Fabric Interconnect. The user needs permissions to change the following configuration inside UCS Manager version 3.1:

- vNIC and vHBA profiles
- Fan speed and power redundancy profile of UCS Manager

Which two roles must be assigned to a user to achieve this goal? (Choose two.)

- A. server-compute
- B. facility-manager
- C. operations
- D. server-equipment
- E. server-profile

**Answer: AD**

#### NEW QUESTION 25

Which two actions must be taken to directly connect a Fibre Channel storage array to a Cisco UCS domain? (Choose two.)

- A. Configure a new VSAN
- B. Create a new vHBA dedicated to the storage array
- C. Configure a Fibre Channel port channel
- D. Create a Storage Connection Policy
- E. Configure the Fibre Channel poet as a Fibre Channel storage port

**Answer: AE**

#### NEW QUESTION 29



An engineer must shut down the Ethernet 1/2 interface when the Ethernet 4/5 interface state is down. Drag and drop the CLI commands from the bottom onto the blanks in the exhibit to implement this EEM. Not all commands are used.

```
switch# configure terminal
switch(config)# track 1 
switch(config-track)# end

switch(config)# event manager applet track_4_5_down
switch(config-applet)# event track 1 state down
switch(config-applet)# action 1 syslog msg EEM applet
track_4_5_down shutting down port eth1/2 due to eth4/5
being down
switch(config-applet)# action 2 cli conf term
switch(config-applet)# action 3 cli 
switch(config-applet)# action 4 cli 
switch(config-applet)# end
```

interface ethernet 1/2

interface ethernet 4/5

no shut

shut

- A. Mastered
- B. Not Mastered

**Answer:** A

**Explanation:**

Text Description automatically generated

**NEW QUESTION 31**

Where is the witness deployed in a two-node Cisco HyperFlex Edge deployment?

- A. to the HyperFlex Edge two-node cluster
- B. to an additional server with network access to HyperFlex Edge
- C. to a third-party cloud provider
- D. to Cisco Intersight

**Answer:** D

**Explanation:**

The Cisco HyperFlex Edge invisible cloud witness is only required for 2-node HX Edge deployments. correct, it has to connect to Intersight as it is a CLOUD invisible witness as per the document shared: The Cisco HyperFlexEdge invisiblecloud witnessis only requiredfor 2-nodeHX Edge deployments. The witness does not require any additional infrastructure, setup, configuration, backup, patching ,or management of any kind. This feature is automatically configured as part of a 2-node Hyper Flex Edge installation. Outbound access at the remote site must be present for connectivity to Intersight (eitherIntersight.com or to the Intersight Virtual Appliance). HyperFlexEdge 2-nodeclusters cannot operate without this connectivity in place  
[https://www.cisco.com/c/en/us/td/docs/hyperconverged\\_systems/HyperFlex\\_HX\\_DataPlatformSoftware/Edge\\_Deployment\\_Guide/b\\_HyperFlex\\_Edge\\_Deployment\\_Guide\\_4\\_0.pdf](https://www.cisco.com/c/en/us/td/docs/hyperconverged_systems/HyperFlex_HX_DataPlatformSoftware/Edge_Deployment_Guide/b_HyperFlex_Edge_Deployment_Guide_4_0.pdf)

**NEW QUESTION 33**

Refer to the exhibit.

```
switch(config)# interface Ethernet 2/2
switch(config)# ip address 172.23.231.240/23
switch(config)# ip verify unicast source reachable-via rx
```

What is configured as a result of running these commands?

- A. reverse lookup for outbound packets
- B. strict unicast RPF
- C. loose unicast RPF
- D. IP Source Guard

**Answer:** B

**Explanation:**

[https://tools.cisco.com/security/center/resources/unicast\\_reverse\\_path\\_forwarding](https://tools.cisco.com/security/center/resources/unicast_reverse_path_forwarding)

The ip verify unicast source reachable-via rx command enables Unicast RPF in strict mode. To enable loose mode, administrators can use the any option to enforce the requirement that the source IP address for a packet must appear in the routing table.

**NEW QUESTION 34**

Refer to the exhibit.

```

Enter the configuration method. (console/gui) ? console

Enter the setup mode; setup newly or restore from backup.
(setup/restore) ? restore

NOTE:
  To configure Fabric interconnect using a backup file on
a remote server, you will need to setup management
interface.
  The management interface will be re-configured (if
necessary), based on information stored in the backup file.

Continue to restore this Fabric interconnect from a backup
file (yes/no) ? yes

Physical Switch Mgmt0 IPv4 address : 192.168.10.10
Physical Switch Mgmt0 IPv4 netmask : 255.255.255.0
IPv4 address of the default gateway : 192.168.10.1
Enter the protocol to get backup file (scp/ftp/tftp/sftp)
? scp
Enter the IP address of backup server: 20.10.20.10
Enter fully qualified backup file name: Backup.bak
Enter user ID: user
Enter password:
  Retrieved backup configuration file.
Configuration file - Ok
  
```

Which type of backup is required to restore a Cisco UCS configuration?

- A. system configuration
- B. all configuration
- C. logical configuration
- D. full state

**Answer:** A

**Explanation:**

[https://www.cisco.com/c/en/us/td/docs/unified\\_computing/ucs/sw/cli/config/guide/1-0-2/b\\_CLI\\_Config\\_Guide\\_](https://www.cisco.com/c/en/us/td/docs/unified_computing/ucs/sw/cli/config/guide/1-0-2/b_CLI_Config_Guide_)

The following example restores a system configuration from the Backup.bak file, which was retrieved from the 20.10.20.10 backup server using FTP:

```

Enter the configuration method. (console/gui) ? console

Enter the setup mode; setup newly or restore from backup. (setup/restore) ? restore

NOTE:
  To configure Fabric interconnect using a backup file on a remote server,
you will need to setup management interface.
  The management interface will be re-configured (if necessary),
based on information stored in the backup file.

Continue to restore this Fabric interconnect from a backup file (yes/no) ? yes

Physical Switch Mgmt0 IPv4 address : 192.168.10.10

Physical Switch Mgmt0 IPv4 netmask : 255.255.255.0

IPv4 address of the default gateway : 192.168.10.1

Enter the protocol to get backup file (scp/ftp/tftp/sftp) ? scp
Enter the IP address of backup server: 20.10.20.10
Enter fully qualified backup file name: Backup.bak
Enter user ID: user
Enter password:
  Retrieved backup configuration file.
Configuration file - Ok

Cisco UCS 6100 Series Fabric Interconnect
UCS-A login:
  
```

#### NEW QUESTION 37

A network engineer configures a converged network adapter (CNA) and must associate a virtual fiber Channel 7 interface to VSAN 7. The CNA connected to the interface Eth1/7, and VLAN 700 is mapped to the VSNA. Which configuration must be applied to create the virtual Fiber Channel interface and associate it with the Ethernet physical interface?

A)

```
switch(config)# vlan 700
switch(config-vlan)# fcoe vsan 7
```

B)

```
switch(config)# vsan database
switch(config-vsan)# vsan 7 interface vfc 7
```

C)

```
switch(config)# interface ethernet 1/7
switch(config-if)# vfc 7 attach vlan 1,700
```

D)

```
switch(config)# interface vfc 7
switch(config-if)# bind interface ethernet 1/7
```

- A. Option A
- B. Option B
- C. Option C
- D. Option D

**Answer: D****NEW QUESTION 40**

An engineer must implement a VXLAN-based data center interconnect. The long-distance transport provided by a service provider is IP-based, supports a maximum MTU of 1554 bytes, and does not support outbound traffic replication. Which action must be taken to build the data center interconnect?

- A. Configure a route map to associate the IPs of the remote VTEPs.
- B. Create an IP access list and associate it with VNI to replicate traffic to remote VTEPs.
- C. Announce host reachability over BGP.
- D. Implement BGP EVPN ingress replication.

**Answer: D****NEW QUESTION 45**

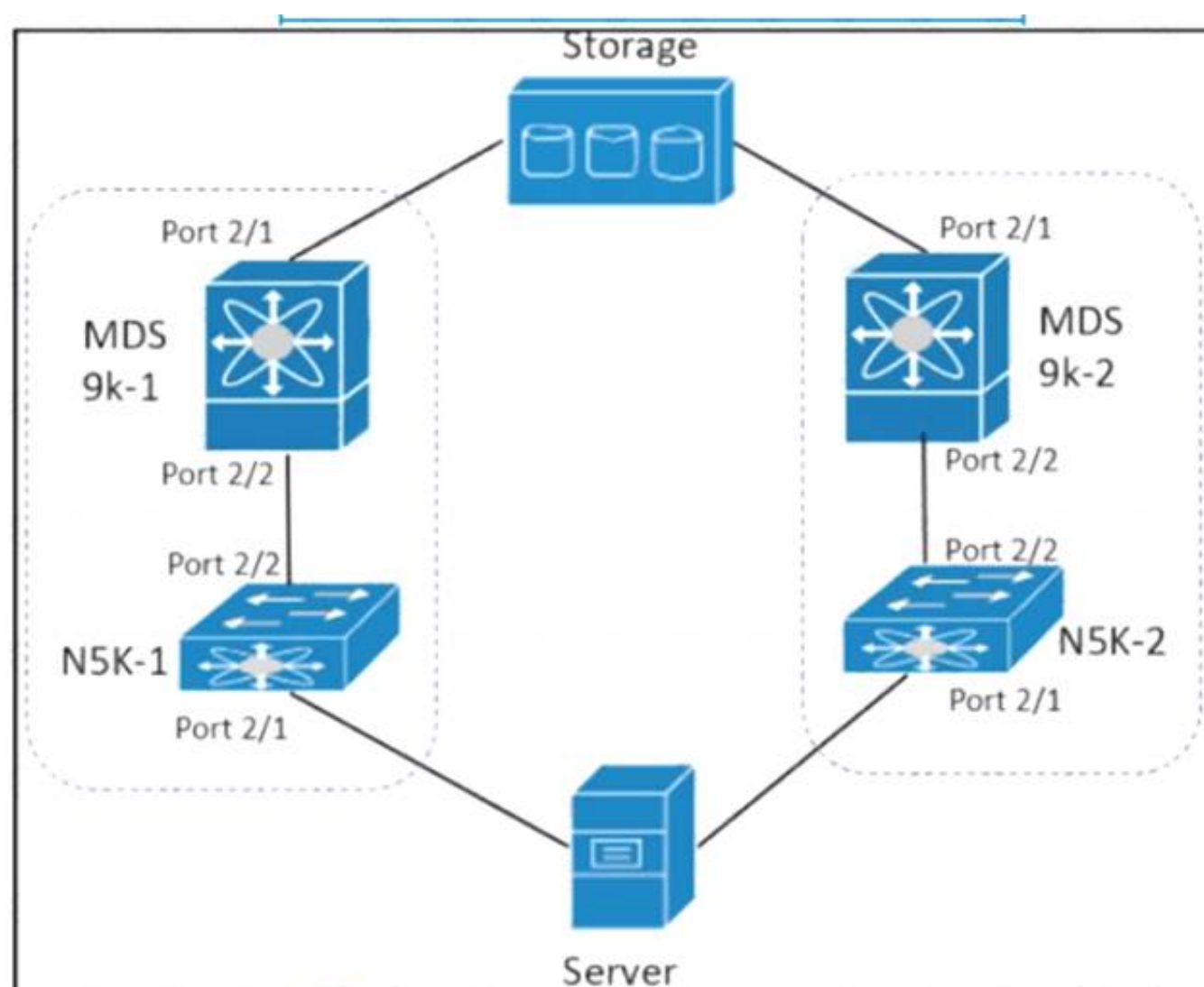
A network engineer must deploy a configuration backup policy to the Cisco UCS Manager. The file generated from this backup must have a snapshot of the entire system that should be used to restore the system during disaster recovery. The backup file must be transferred insecurely by using the TCP protocol. Which configuration backup settings meet these requirements?

- A. Type: All Configuration Protocol: SCP
- B. Type: Logical Configuration Protocol: SFTP
- C. Type: Full State Protocol: FTP
- D. Type: System Configuration Protocol: TFTP

**Answer: C****NEW QUESTION 48**

Refer to the exhibit.





The server is sending traffic to the storage server using Fiber Channel protocol. The requirement is for the N5K-1 to forward traffic to MDS9k-1. Drag and drop the configuration steps from the right to complete the configuration for N5K-1 on the left. Not all configuration steps are used.

```

N5K-1# configuration terminal
N5K-1#(config) # 
N5K-1#(config) # interface fc 2/2
N5K-1#(config-if) # 
N5K-1#(config-if) # no shutdown
N5K-1#(config) # 
N5K-1#(config-if) # 
N5K-1#(config-if) # no shutdown
        
```

interface fc 2/1

interface port 2/1

interface port 2/2

npv enable

switchport mode F

switchport mode NP

- A. Mastered
- B. Not Mastered

**Answer:** A

**Explanation:**

npv enable, switchport mode F, interface fc2/1, switchport mode NP

**NEW QUESTION 49**

An engineer must add a new VRF (DC DC) to the network that runs with Multiprotocol Border Gateway Protocol (MP-BGP) and EVPN. The requirement for the new VRF is to allow communication of network prefixes between PE1 and PE2. Which two sets of steps should be taken to complete the VRF configuration? (Choose two)





- A. Option A
- B. Option B
- C. Option C
- D. Option D
- E. Option E

**Answer:** DE

#### NEW QUESTION 53

Which two firmware packages are included in the Cisco UCS C-Series Rack-Mount UCS-Managed Server Software bundle? (Choose two.)

- A. system
- B. third-party
- C. PSU
- D. CIMC
- E. BIOS

**Answer:** DE

#### Explanation:

[https://www.cisco.com/c/en/us/td/docs/unified\\_computing/ucs/ucs-manager/GUI-User-Guides/Firmware-Mgmt/](https://www.cisco.com/c/en/us/td/docs/unified_computing/ucs/ucs-manager/GUI-User-Guides/Firmware-Mgmt/)

#### Cisco UCS C-Series Rack-Mount UCS-Managed Server Software Bundle

This bundle includes the following firmware images that are required to update components on rack-mount servers that have been integrated with and are managed by Cisco UCS Manager:

- CIMC firmware
- BIOS firmware
- Adapter firmware
- Storage controller firmware

#### NEW QUESTION 55

Due to a major version change, an engineer must perform a software upgrade on a Cisco Nexus Series switch. Which two technologies can be implemented to reduce disruptions to the network during the upgrade? (Choose two.)

- A. MLAG
- B. HSRP
- C. PAgP
- D. VDC
- E. vPC

**Answer:** BE

#### NEW QUESTION 57

Refer to the exhibit.

Which setting must be configured to prevent reuse of passwords?

- A. No Change Interval
- B. Change Interval
- C. History Count
- D. Change Count

**Answer: C**

**Explanation:**

[https://www.cisco.com/c/en/us/td/docs/unified\\_computing/ucs/ucs-manager/GUI-User-Guides/Admin-Management/3-1/b\\_Cisco\\_UCS\\_Admin\\_Mgmt\\_Guide\\_3\\_1/b\\_Cisco\\_UCS\\_Admin\\_Mgmt\\_Guide\\_3\\_1\\_chapter\\_011.html](https://www.cisco.com/c/en/us/td/docs/unified_computing/ucs/ucs-manager/GUI-User-Guides/Admin-Management/3-1/b_Cisco_UCS_Admin_Mgmt_Guide_3_1/b_Cisco_UCS_Admin_Mgmt_Guide_3_1_chapter_011.html)

#### NEW QUESTION 61

An engineer is implementing Cisco Intersight in a secure environment. The environment must use LDAP directory service and ensure information integrity and confidentiality. Which two steps must be taken to implement the solution? (Choose two.)

- A. Enable Encryption for LDAP
- B. Add a self-signed LDAP certificate to Cisco Intersight.
- C. Enable Certificate Signing Request in Cisco Intersight.
- D. Add a trusted root LDAP certificate to Cisco Intersight
- E. Add a trusted OAuth token to Cisco Intersight

**Answer: AD**

**Explanation:**

[https://www.cisco.com/c/en/us/td/docs/unified\\_computing/Intersight/b\\_Cisco\\_Intersight\\_Appliance\\_Getting\\_Started\\_Guide/b\\_Cisco\\_Intersight\\_Appliance\\_Install\\_and\\_Upgrade\\_Guide\\_chapter\\_0110.html](https://www.cisco.com/c/en/us/td/docs/unified_computing/Intersight/b_Cisco_Intersight_Appliance_Getting_Started_Guide/b_Cisco_Intersight_Appliance_Install_and_Upgrade_Guide_chapter_0110.html)

#### NEW QUESTION 66

An engineer must create a scheduler configuration to create two backup jobs per day. The backup file must be copied to a server in the operations VRF. Which configuration accomplishes this task?

A)

```
scheduler schedule name CNFGBACKUP
  job name BACKUP-JOB
  copy running-config tftp://10.19.11.12/$(SWITCHNAME)-$(TIMESTAMP).cfg vrf operations
  time start now repeat 12:00
```

B)

```
scheduler schedule name CNFGBACKUP
  job name BACKUP-JOB
  show tech-support | redirect vrf operations tftp://10.19.11.12/$(SWITCHNAME)-$(TIMESTAMP).cfg
  time start daily 12:30 0:30
```

C)

```
scheduler schedule name CNFGBACKUP
  job name BACKUP-JOB
  copy startup-config tftp://10.19.11.12/$(SWITCHNAME)-$(TIMESTAMP).cfg
  time daily 12:30 0:30
```

D)

```
scheduler schedule name CNFGBACKUP
  job name BACKUP-JOB
  copy vrf operations config tftp://10.19.11.12/$(SWITCHNAME)-$(TIMESTAMP).cfg
  time start 12:30 repeat 12
```

- A. Option A
- B. Option B
- C. Option C
- D. Option D

**Answer:** A**NEW QUESTION 71**

The EPLD update of the supervisor module has been scheduled for several cisco MDS 9000 switches. What will be the impact of the update?

- A. All control plane traffic is stopped for the duration of the EPLD update and the switch remain operational for the duration of the upgrade.
- B. The redundant supervisor takes over while the EPLD update is in progress and there is no service disruption.
- C. All traffic is stopped for the duration of the EPLD update and the switch is rebooted after the upgrade is completed.
- D. The redundant supervisor takes while the EPLD update is in progress and the switch is rebooted after the upgrade is completed.

**Answer:** C**Explanation:**

An EPLD update of the supervisor module of fabric switches (Cisco MDS 9100, Cisco MDS 9200, and Cisco MDS 9300 Series switches) is disruptive since there is no redundant supervisor to take over while the update is in progress. All traffic through the system is stopped for the duration of the update and the switch is rebooted after the upgrade has completed. The update may take up to 30 minutes to complete.

[https://www.cisco.com/c/en/us/td/docs/switches/datacenter/mds9000/sw/6\\_2/release/notes/epld/epld\\_rn.html#pg](https://www.cisco.com/c/en/us/td/docs/switches/datacenter/mds9000/sw/6_2/release/notes/epld/epld_rn.html#pg)

**NEW QUESTION 76**

An engineer performs a Firmware Auto Install upgrade through the Cisco UCS Manager. Which two Cisco UCS components are upgraded in the Install Server Firmware stage? (Choose two)

- A. Cisco UCS C-Series Rack-Mount Server
- B. I/O Modules
- C. Cisco UCS Manager
- D. Cisco UCS B-Series Blade Server
- E. Fabric Interconnects

**Answer:** BE**NEW QUESTION 81**

An engineer implements a Cisco UCS C-Series Server that must adhere to these security requirements:

- Unencrypted communication must be disabled.
- The session timeout must not exceed 15 minutes.
- Unencrypted traffic must be automatically diverted.
- CLI-based management must use nondefault ports.

Which configuration set meets these requirements?



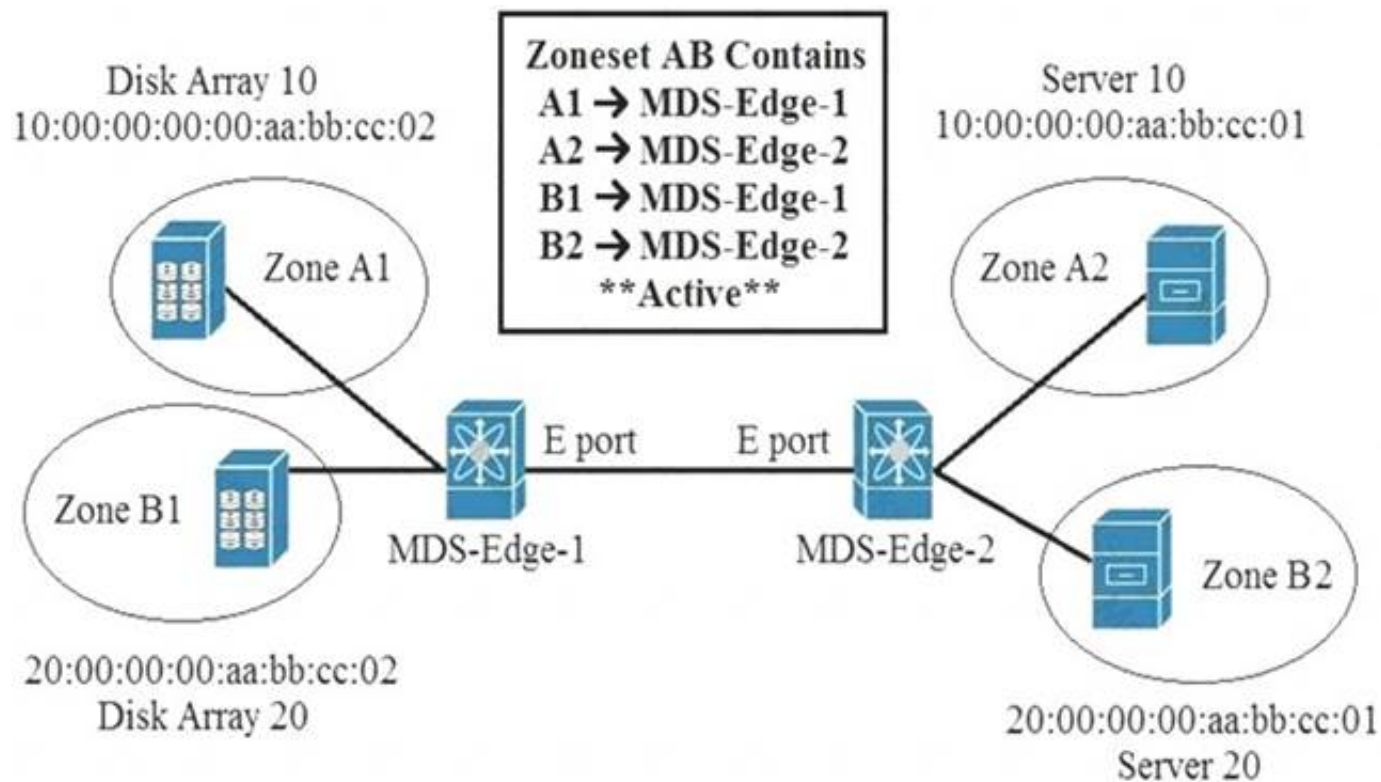
- XML API Enabled  
 HTTP Port: 8080 / HTTPS Port: 8443  
 IPMI over LAN Enabled  
 Randomized Encryption Key
- HTTP Port: 80 / HTTPS Port: 443  
 Session Timeout: 900  
 Redirect HTTP to HTTPS Enabled  
 SSH Port: 2022
- Redfish Enabled checked  
 Redfish Port: 443  
 SSH Enabled checked  
 HTTPS Port: 8443
- SSH Enabled  
 SSH Port: 8022  
 SSH Timeout: 1200  
 IPMI over LAN Enabled

- A. Option A
- B. Option B
- C. Option C
- D. Option D

**Answer: B**

#### NEW QUESTION 83

Refer to the exhibit.



An engineer is implementing zoning on two Cisco MDS switches. After the implementation is finished, E Ports that connect the two Cisco MDS switches becomes isolated. What is wrong with the implementation?

- A. E Ports on both MDS switches must be configured as F ports for the zoning to function.
- B. Zones are local to the MDS switch and name service must be used to activate the connection between E ports.
- C. Different zone set names must be configured on both MDS switches.
- D. Zones must have the same name on both MDS switches for the E ports to function.

**Answer: D**

#### Explanation:

When two switches in a fabric are merged using a TE or E port, these TE and E ports may become isolated when the active zone set databases are different between the two switches or fabrics." [https://www.cisco.com/c/en/us/td/docs/switches/datacenter/mds9000/sw/6\\_2/configuration/guides/fabric/nxos/n](https://www.cisco.com/c/en/us/td/docs/switches/datacenter/mds9000/sw/6_2/configuration/guides/fabric/nxos/n)

#### NEW QUESTION 88

A company is running a pair of cisco Nexus 7706 series switches as part of a data center segment. All network engineers have restricted read-Write access to the core switches. A network engineer must a new FCoE VLAN to allow traffic from services toward FCoE storage. Which set of actions must be taken to meet these requirements?

- A. \* 1. Create a user defined role and add the required privileges.\* 2. Assign a role to a user.
- B. \* 1. Add the required privilege to the VDC-admin role.
- C. Commit the changes to the active user database.
- D. \* 1. Modify a network-operator role and add the required privileges.\* 2. Assign a VDC-operator role to a user.
- E. \* 1. Assign the network-admin role to a user.\* 2. Commit the role to the switch to the active user database

**Answer: B**



#### NEW QUESTION 90

The Cisco UCS blade chassis must send SNMPv3 traps to a network monitoring system. The SNMP trap messages should be authenticated and have protection from closure. Which SNMP security privileged level should be configured?

- A. noPriv
- B. auth
- C. noAuth
- D. priv

Answer: D

#### NEW QUESTION 92

An engineer must create an EPG called "Test". The configuration request should succeed if the Tenant called "Tenant" and the application profile called "Test" exist. The firewall policy allows only the HTTP connectivity to APIC from the user's computer. Which action accomplishes this goal?

- ☒ Send <fvAEPg dn="uni/tn-Test/ap-Test/epg-Tenant" status="created"/> to APIC payload using HTTP PUT to the Cisco APIC.
- ☐ Send <fvAEPg dn="uni/tn-Test/ap-Test/epg-Tenant" status="created"/> to APIC payload using HTTP POST to the Cisco APIC.
- ☐ Send <fvAEPg dn="uni/tn-Tenant/ap-Test/epg-Test" status="created"/> to APIC payload using HTTP POST to the Cisco APIC.
- ☐ Send <fvAEPg dn="uni/tn-Tenant/epg-Test/ap-Test" status="created"/> to APIC payload using HTTP PUT to the Cisco APIC.

- A. Option A
- B. Option B
- C. Option C
- D. Option D

Answer: C

#### NEW QUESTION 93

An engineer requires the Cisco Fabric Services to distribute NTP configuration only to the members within the scope of a VSAN that belongs to a Cisco Unified Network. Which scope distribution must be selected to meet this requirement?

- A. Logical scope
- B. Physical scope
- C. Uncoordinated scope
- D. Coordinated scope

Answer: A

#### NEW QUESTION 94

Refer to the exhibit

MDS-B# show role			
Role: network-admin			
Description: Predefined Network Admin group. This role cannot be modified.			
Vsan policy: permit (default)			
-----			
Rule	Type	Command-type	Feature
-----			
1	permit	clear	*
2	permit	config	*
3	permit	debug	*
4	permit	exec	*
5	permit	show	*
Role: default-role			
Description: This is a system defined role and applies to all users.			
Vsan policy: permit (default)			
-----			
Rule	Type	Command-type	Feature
-----			
1	permit	show	system
2	permit	show	snmp
3	permit	show	module
4	permit	show	hardware
5	permit	show	environment
Role: san-users			
Description: SAN users			
Vsan policy: permit (default)			
-----			

A network engineer created a new role to be assigned to the SAN users The requirement is for users to have these characteristics

- permitted to show access to the system, SNMP, module, and hardware information
-

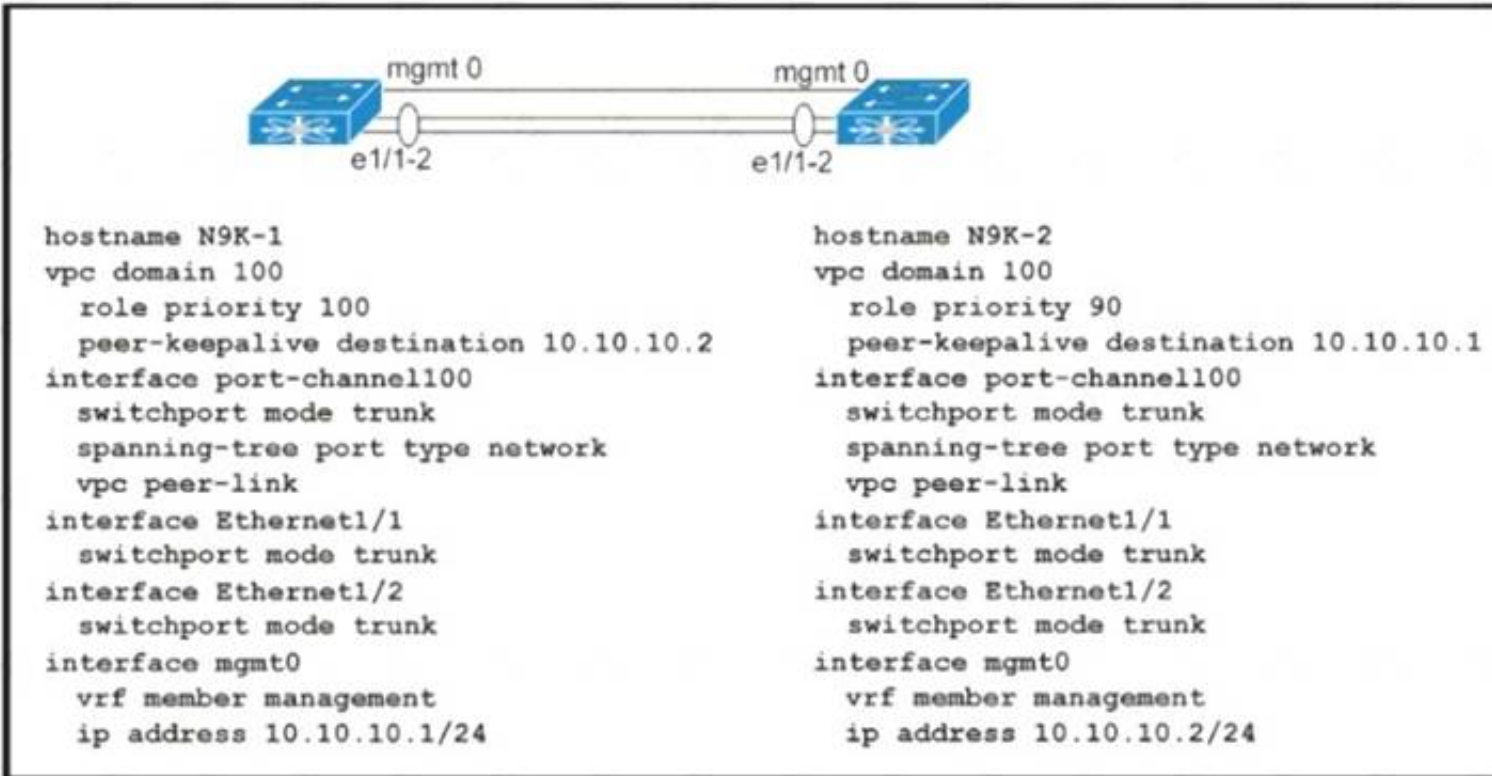
permitted to run debug zone and exec fcping commands  
 > restricted from accessing show feature environment command  
 Which configuration set meets these requirements?

- A. Option A
- B. Option B
- C. Option C
- D. Option D

**Answer: D**

#### NEW QUESTION 96

Refer to the exhibit.



Which action completes the vPC domain implementation?

- A. Allow VLANs on the vPC peer link member interfaces.
- B. Include the VRF management on the vPC domain.
- C. Configure the system MAC on the vPC domain.
- D. Add the vPC member ports to the vPC channel group.

**Answer: D**

#### NEW QUESTION 99

An engineer must implement private VLANs for a group of Cisco UCS 8-Series servers. The primary VLAN is present, But the secondary VLAN must Be added to Both fabrics. Which configuration set accomplishes this task?

- ☒ UCS-A# scope eth-uplink  
 UCS-A /eth-uplink # create vlan vlan1981 1981  
 UCS-A /eth-uplink/vlan\* # set sharing none
- ☐ UCS-A# scope eth-uplink  
 UCS-A /eth-uplink # create vlan vlan1981 1981  
 UCS-A /eth-uplink/vlan\* # set sharing isolated
- ☐ UCS-A# scope eth-uplink  
 UCS-A /eth-uplink # scope fabric a  
 UCS-A /eth-uplink/fabric # create vian vian1981 1981  
 UCS-A /eth-uplink/fabric/vlan\* # set sharing private
- ☒ UCS-A# scope eth-uplink  
 UCS-A /eth-uplink # scope fabric a  
 UCS-A /eth-uplink/fabric # create vian vian1981 1981  
 UCS-A /eth-uplink/fabric/vlan\* # set sharing secondary

- A. Option A
- B. Option B
- C. Option C
- D. Option D

**Answer: B**

#### NEW QUESTION 104

A network engineer needs to upgrade the EPLDs of the fabric modules for a Cisco MDS director-class switch. In which order are components reloaded during the process?

- A. one fabric module at the time
- B. all fabric modules followed by the entire switching platform
- C. all fabric modules in parallel
- D. one module and one supervisor at the time

**Answer:** C

**Explanation:**

[https://www.cisco.com/c/en/us/td/docs/switches/datacenter/mds9000/sw/7\\_3/release\\_notes/epld/epld\\_rn\\_7x.html](https://www.cisco.com/c/en/us/td/docs/switches/datacenter/mds9000/sw/7_3/release_notes/epld/epld_rn_7x.html)  
Graphical user interface, text, application Description automatically generated

## Installing a Fabric Module EPLD Update

The Cisco MDS 9700 series and Cisco MDS 9513 director class switch have dedicated fabric modules. These modules contain EPLDs, which can be upgraded as described in this section. All other Cisco MDS switches do not have these modules, so this process is not applicable for them.

For Cisco MDS 9700 Series of switches, use the `install all epld uri parallel xbar-module slot` command to update EPLD images on the fabric modules. This process reloads the updated module. To ensure that the data traffic performance is not affected while the module is reloading, check the fabric bandwidth utilization by using the `show hardware fabric-utilization detail` command. If there is adequate reserve fabric bandwidth available before the update starts, then the update will be nondisruptive.

### NEW QUESTION 107

An engineer needs to connect Cisco UCS Fabric Interconnect (FI) to an external storage array. Due to budget limitations, the engineer must connect a Cisco UCS FI directly to an FC storage port. Which two actions must be taken to complete this connection? (Choose two.)

- A. Configure the fabric interconnect in FC switch mode.
- B. Set FC zoning to disabled when creating the VSAN
- C. Create a storage connection policy.
- D. Configure the fabric interconnect in end-host mode,
- E. Create the required VSAN in the SAN cloud.

**Answer:** AE

### NEW QUESTION 111

A Cisco ACI engineer must configure an access port on a Cisco ACI leaf switch. The access policy should be configured so that it supports L3out connectivity concurrently with several EPGs that are mapped to this interface with the static port method. How should the access policy be configured?

- A. by linking the interface policy group to multiple Attachable Access Entity Profiles
- B. with a single Attachable Access Entity Profile that is linked to the corresponding routed domain and physical domain
- C. with two interface policy groups that are linked to the same interface profile port selector
- D. by mapping a single physical domain, mapped to the L3out and EPG interfaces

**Answer:** D

### NEW QUESTION 116

Refer to the exhibit.

```
<?xml version="1.0" encoding="UTF-8"?><imdata totalCount="1"><error code="403" text="Token was invalid (Error: Token timeout)"/></imdata>
```

An engineer configures a new application profile using REST API and receives this error message. Which method can be used before application profile can be configured?

- A. POST to aaaLogin
- B. POST to aaaRefresh
- C. POST to aaaLogout
- D. GET to aaaListDomains

**Answer:** A

**Explanation:**

[https://www.cisco.com/c/en/us/td/docs/switches/datacenter/aci/apic/sw/2-x/rest\\_cfg/2\\_1\\_x/b\\_Cisco\\_APIC\\_REST\\_API\\_Configuration\\_Guide/b\\_Cisco\\_APIC\\_REST\\_API\\_Configuration\\_Guide\\_chapter\\_01.html](https://www.cisco.com/c/en/us/td/docs/switches/datacenter/aci/apic/sw/2-x/rest_cfg/2_1_x/b_Cisco_APIC_REST_API_Configuration_Guide/b_Cisco_APIC_REST_API_Configuration_Guide_chapter_01.html)



## Authentication

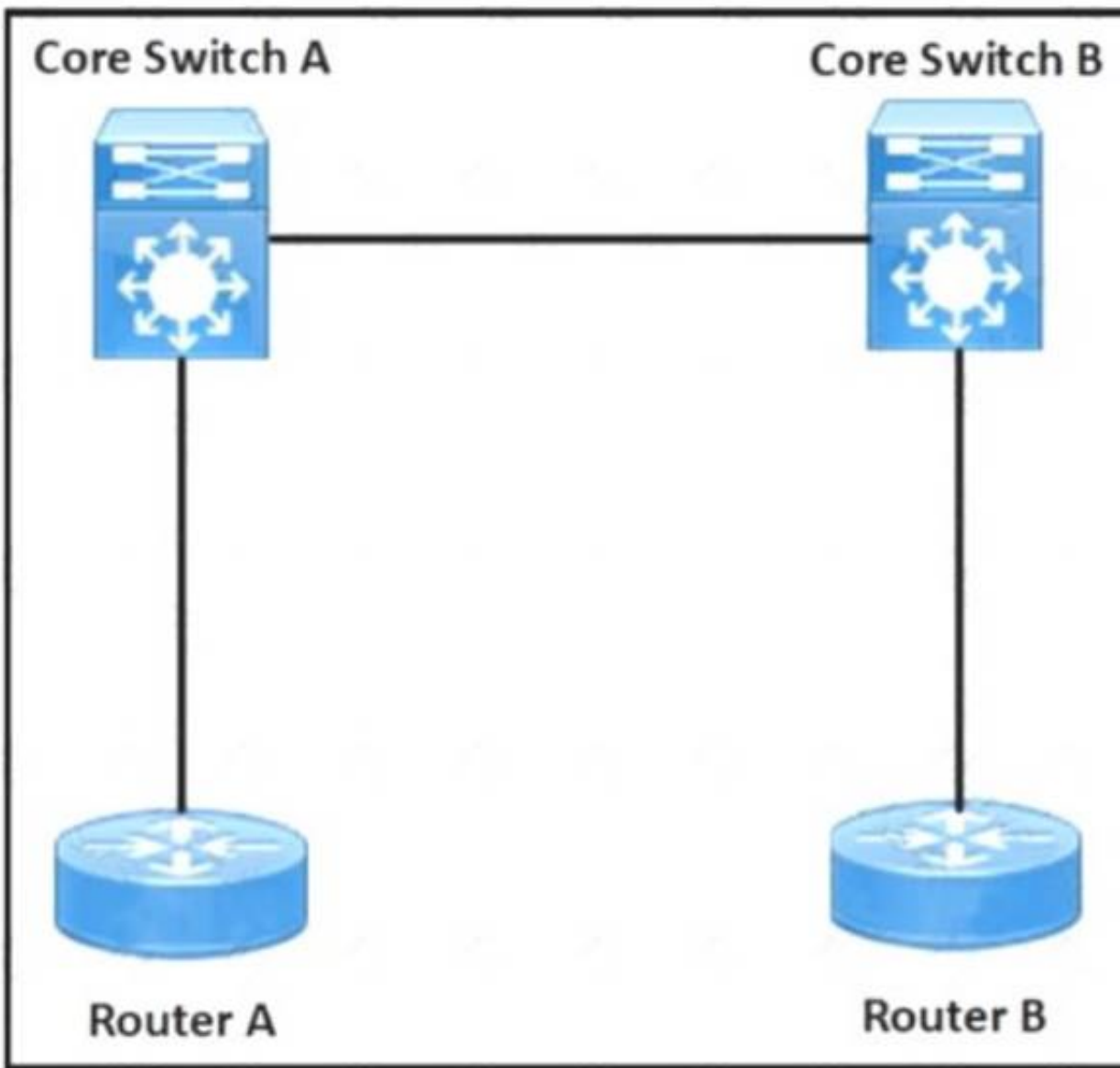
REST API username- and password-based authentication uses a special subset of request Universal Resource Identifiers (URIs), including **aaaLogin**, **aaaLogout**, and **aaaRefresh** as the DN targets of a POST operation. Their payloads contain a simple XML or JSON payload containing the MO representation of an **aaaUser** object with the attribute name and **pwd** defining the username and password: for example, **<aaaUser name='admin' pwd='password'/>**. The response to the POST operation will contain an authentication token as both a Set-Cookie header and an attribute to the **aaaLogin** object in the response named **token**, for which the XPath is **/imdata/aaaLogin/@token** if the encoding is XML. Subsequent operations on the REST API can use this token value as a cookie named **APIC-cookie** to authenticate future requests.

## Subscription

The REST API supports the subscription to one or more MOs during your active API session. When any MO is created, changed, or deleted because of a user- or system-initiated action, an event is generated. If the event changes the data on any of the active subscribed queries, the APIC will send out a notification to the API client that created the subscription.

### NEW QUESTION 118

Refer to the exhibit.



```

feature vn-segment-vlan-based
feature nv overlay

vlan 10
  vn-segment 10010

Interface Loopback0
  ip address 10.10.0.1/32
  ip pim sparse mode
  
```

A network engineer configures the VXLAN between the routers in a data center. The VLAN 10 must be extended between routers A and B. The initial VXLAN configuration is completed on Router A. Which configuration finishes the VXLAN configuration on Router A?

A.

```

vrf context tenant1
vni 10010

Interface nve1
source-interface lo0
no shutdown
member vni 10010 interface 10.10.0.1
  
```



- B. `system bridge-domain 10`  
`member vni 10010`  
`interface nve1`  
`no shutdown`  
`source-interface lo0`
- C. `interface nve1`  
`no shutdown`  
`source-interface lo0`  
`vni 10100 l2`  
`rd auto`
- D. `interface nve1`  
`no shutdown`  
`source-interface lo0`  
`member vni 10010 mcast-group 231.1.1.1`

**Answer:** C

#### NEW QUESTION 120

An engineer must configure multiple EPGs on a single access port in a large Cisco ACI fabric without using VMM integration. The relevant access policies and tenant policies have been created. A single AAEP is used to configure the access port in the fabric. Which two additional steps must be taken to complete the configuration? (Choose two.)

- A. A contract must be defined between the EPGs  
 B. The EPGs must be linked to the correct physical domain  
 C. The EPGs must link directly to the corresponding AAEP  
 D. The corresponding bridge domains must be configured in legacy mode  
 E. The EPGs must be configured as static ports

**Answer:** BE

#### Explanation:

Attach EPG to Physical Domain (to AAEP through it) and add static ports to EPG  
 Contract is needed to allow communication between two EPGs, or EPG and L3out or between two L3out

#### NEW QUESTION 125

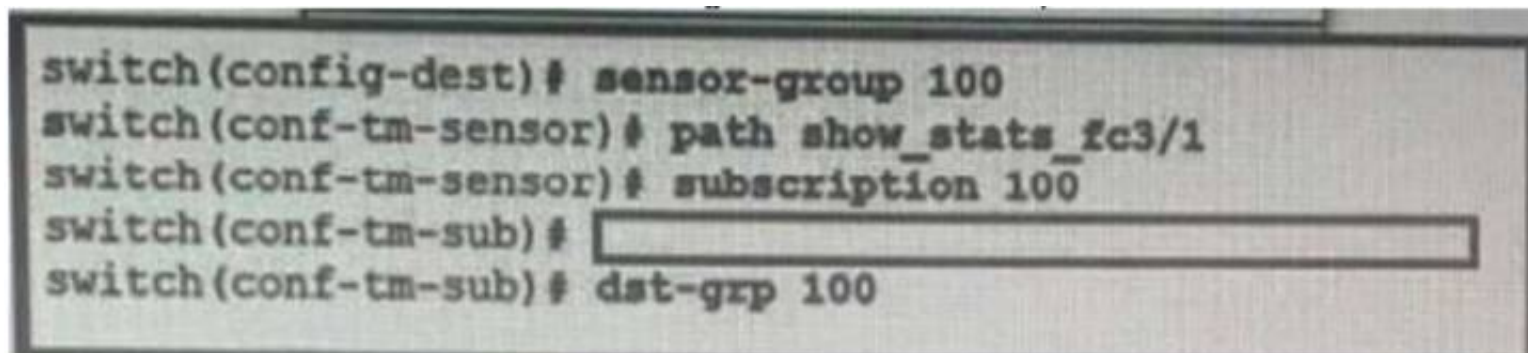
Which MAC address is an HSRP version 2?

- A. 0100.5E7F.FFFF  
 B. 3799.9943.3000  
 C. 0000.0C9F.F0C8  
 D. 0000.0C07.AC1H

**Answer:** C

#### NEW QUESTION 128

Refer to the exhibit.



An engineer needs to implement streaming telemetry on a Cisco MDS 9000 series switch. The requirement is for the show command data to be collected every 30 seconds and sent to receivers. Which command must be added to the configuration to meet this requirement?

- A. `Sensor-grp 200 sample-period 30000`  
 B. `Snsr-grp 200 sample-interval 30`  
 C. `Sensor-grp 200 sample-period 30`  
 D. `Snsr-grp 200 sample-interval 30000`

**Answer:** D

#### Explanation:

`snsr-grp <id> sample-interval <interval>` Currently, sensor group ID supports only numeric ID values. Specify the streaming sample interval value; the value must be in milliseconds. The minimum streaming sample interval that is supported is 30000 milliseconds.

[https://www.cisco.com/c/en/us/td/docs/switches/datacenter/mds9000/sw/8\\_x/config/san\\_analytics/cisco-mds9000](https://www.cisco.com/c/en/us/td/docs/switches/datacenter/mds9000/sw/8_x/config/san_analytics/cisco-mds9000)

#### NEW QUESTION 133

APIC EPG Resolution Immediacy is set to "Immediate" Which statement is true about the Deployment Immediacy for VMM domains associated to EPGs?

- A. The "Immediate" and "On demand" options require a port group to be created on the VDS.
- B. If "On demand" is selected, the policy is programmed in the hardware only when the APIC detects a VM created in the EPG.
- C. If "On demand" is selected the policy is programmed in the hardware only when the first packet is received through the data path.
- D. If "immediate" is selected the policy is programmed in the hardware as soon as the leaf is booted.

**Answer: C**

#### Explanation:

"Deployment Immediacy On demand — Specifies that the policy is programmed in the hardware policy CAM only when the first packet is received through the data path."

[https://www.cisco.com/c/en/us/td/docs/switches/datacenter/aci/apic/sw/1-x/aci-fundamentals/b\\_ACI-Fundament](https://www.cisco.com/c/en/us/td/docs/switches/datacenter/aci/apic/sw/1-x/aci-fundamentals/b_ACI-Fundament)

#### NEW QUESTION 137

Which two settings must be configured before enabling a Cisco UCS Manager domain for Cisco Intersight connectivity? (Choose two.)

- A. syslog redirection
- B. DNS servers
- C. SMTP servers
- D. NTP servers
- E. SMTP reply-to-address

**Answer: BD**

#### Explanation:

[https://www.cisco.com/c/en/us/td/docs/unified\\_computing/ucs/ucs-manager/GUI-User-Guides/Admin-Management/4-1/b\\_Cisco\\_UCS\\_Admin\\_Mgmt\\_Guide\\_4-1/m\\_gui\\_cisco\\_intersight\\_management.html](https://www.cisco.com/c/en/us/td/docs/unified_computing/ucs/ucs-manager/GUI-User-Guides/Admin-Management/4-1/b_Cisco_UCS_Admin_Mgmt_Guide_4-1/m_gui_cisco_intersight_management.html)

#### NEW QUESTION 140

A network architect wants to propose a scalable network monitoring solution in which data is repeatedly acquired from network devices. The solution must use a push model and provide close to realtime access to operational data. Which technology must be used to meet these requirements?

- A. streaming telemetry
- B. logging
- C. SNMPv3
- D. CLI-based scripting

**Answer: A**

#### Explanation:

<https://blogs.cisco.com/developer/its-time-to-move-away-from-snmp-and-cli-and-use-model-driven-telemetry>

Why Model-Driven Telemetry?

Model-Driven Telemetry is a new approach for network monitoring in which data is streamed from network devices continuously using a push model and provides near real-time access to operational statistics. You can precisely define what data you want to subscribe to using standard YANG models (YANG is a data modeling language used to model configuration and state data manipulated by the NETCONF protocol) with no CLI required. It allows network devices to continuously stream real time configuration and operating state information to subscribers. Structured data is published at a defined cadence, or on-change, based upon the subscription criteria and data type.

#### NEW QUESTION 144

Refer to the exhibit.



Which backup operation type does not include the Preserve Identities feature?

- A. logical configuration
- B. system configuration
- C. full state
- D. all configuration

**Answer:** C

**Explanation:**

This checkbox remains selected for All Configuration and System Configuration. Full State backup does not have Preserver Identity feature. All configs, logical and system backups seem to allow "preserve identities":  
<https://books.google.pt/books?id=5VXUDwAAQBAJ&pg=PT699&lpg=PT699&dq=Preserve+Identities+feature+backup+ucs&source=bl&ots=daWxti4DV&sig=ACfU3U3X8UIPtS8EewzRIqTxqpyNVqOaNQ&hl=es419&sa=X&ved=2ahUKEwiYhtaxyMDqAhXFzIUkHXl8CzoQ6AEwC3oECAoQAQ#v=onepage&q=Preserve%20Identities%20feature%20backup%20ucs&f=false>

**NEW QUESTION 147**

A Cisco Nexus 7000 Series switch runs VXLAN, and interface Ethernet 7/30 is configured as a trunk port. Which command set configures the switch to act as a gateway for VLAN 50?

```
interface Ethernet7/30 no switchport
no shutdown
service instance 1 vni no shutdown
```

- A. encapsulation profile VSI\_50\_TO\_500 default
- B. encapsulation profile vni VSI\_50\_TO\_500 dot1q 500 vni 50bridge-domain 500member vni 50 interface Vlan500ip address 10.50.50.51/24
- C. encapsulation profile vni VSI\_50\_TO\_500 dot1q 500 vni 50bridge-domain 500member vni 50 interface Bdi500jp address 10.50.50.51/24
- D. encapsulation profile vni VSI\_50\_TO\_500 dot1q 50 vni 500bridge-domain 50member vni 500 interface Bdi50ip address 10.50.50.51/24
- E. encapsulation profile vni VSI\_50\_TO\_500 dot1q 50 vni 500bridge-domain 50member vni 500 interface Vlan50ip address 10.50.50.51/24

**Answer:** C

**NEW QUESTION 149**

Refer to the exhibit.

```
vlan 10
 fcoe vsan 10

interface ethernet 1/3
 spanning-tree port type edge trunk
 switchport mode trunk
 switchport trunk allowed vlan 1, 10
```

An engineer must configure FCoE on a Cisco Nexus switch. Which two command sets complete this configuration? (Choose two.)

- ☒ interface vfc 10  
bind interface fcoe-vfc 1/3  
no shut
- ☐ vsan database  
vsan 10 interface ethernet 1/3
- ☒ interface fcoe 10  
bind interface ethernet 1/3  
no shut
- ☐ interface vfc 10  
bind interface ethernet 1/3  
no shut
- ☐ vsan database  
vsan 10 interface vfc 10

- A. Option A
- B. Option B
- C. Option C
- D. Option D
- E. Option E

**Answer:** DE

**Explanation:**



```
switch# configure terminal

switch(config)# vsan database

switch(config-vsan)# vsan 2 interface vfc 4
```

This example shows how to bind a virtual Fibre Channel interface to an Ethernet interface:

```
switch# configure terminal

switch(config)# interface vfc 4

switch(config-if)# bind interface ethernet 1/4
```

[https://www.cisco.com/c/en/us/td/docs/switches/datacenter/nexus5000/sw/fcoe/421\\_n1\\_1/b\\_Cisco\\_n5k\\_fcoe\\_config\\_gd\\_re\\_421\\_n1\\_1/Cisco\\_n5k\\_fcoe\\_config\\_gd\\_re\\_421\\_n1\\_1\\_chapter4.html](https://www.cisco.com/c/en/us/td/docs/switches/datacenter/nexus5000/sw/fcoe/421_n1_1/b_Cisco_n5k_fcoe_config_gd_re_421_n1_1/Cisco_n5k_fcoe_config_gd_re_421_n1_1_chapter4.html)

#### NEW QUESTION 154

An engineer is seeking the most optimal on demand CPU performance while configuring the BIOS settings of a UCS C-series rack mount server. What setting will accomplish this goal?

- A. C0/C1 state
- B. C6 Retention
- C. C2 state
- D. C6 non-Retention

Answer: B

#### NEW QUESTION 157

A network engineer is asked to describe the cloud infrastructure models from the perspective of their operation and access to resources. Drag and drop the descriptions from the left onto the appropriate.

Provisioned for open use.	Private cloud
At least two or more separate cloud infrastructures are connected together to facilitate hosted data and application portability.	Community cloud
Owned, managed, and operated by one or more organizations or teams.	Public cloud
Owned, managed, and operated by a single organization.	Hybrid cloud

- A. Mastered
- B. Not Mastered

Answer: A

#### Explanation:

Private Cloud: owned, managed, and operated by a single organization.

Community Cloud: Owned, managed, and operated by one or more organizations or teams. Public Cloud: Provisioned for open use.

Hybrid Cloud: At least two or more separate cloud infrastructures are connected together to facilitate hosted data and application portability.

#### NEW QUESTION 160

Refer to the exhibit.

```
Start time: Mon Apr 15 09:23:01 2019
Last election time: Mon Apr 15 09:24:24 2019
A: UP, PRIMARY
B: UP, SUBORDINATE
A: memb state UP, lead state PRIMARY, mgmt services state: UP
B: memb state UP, lead state SUBORDINATE, mgmt services state: UP
heartbeat state PRIMARY_OK
INTERNAL NETWORK INTERFACES:
eth1, UP
eth2, UP
HA NOT READY
No device connected to this Fabric Interconnect
```

What be connected to clear the HA NOT READY status?

- A. server chassis
- B. network uplinks
- C. management ports
- D. Layer 1-Layer 2 ports

**Answer:** A

#### NEW QUESTION 162

An engineer is asked to use SaaS to manage Cisco computing. Which two items are needed to accomplish the task? (Choose two.)

- A. UCS Manager
- B. Node name/Serial Number
- C. Device/Claim ID
- D. UCS Central
- E. Intersight

**Answer:** AE

#### Explanation:

<https://www.cisco.com/c/en/us/products/collateral/cloud-systems-management/intersight/intersight-ds.html>

#### NEW QUESTION 164

A network engineer must create a script to quickly verify IP reachability for multiple hosts using ping from the Cisco NX-OS switches. The script should use the management VRF and exit the shell after execution Which script should be used to achieve this objective?

- ☐

```
tclsh
foreach address {
  192.168.254.1
  192.168.254.2
  192.168.254.3
  192.168.254.4
} {ping $address source 192.168.254.254
}
tclquit
```
- ☐

```
tclsh
foreach address {
  192.168.254.1
  192.168.254.2
  192.168.254.3
  192.168.254.4
} {ping $address source 192.168.254.254
}
}
```
- ☐

```
tclsh
foreach address {
  192.168.254.1
  192.168.254.2
  192.168.254.3
  192.168.254.4
} {ping $address vrf management source 192.168.254.254
}
}
```
- ☒

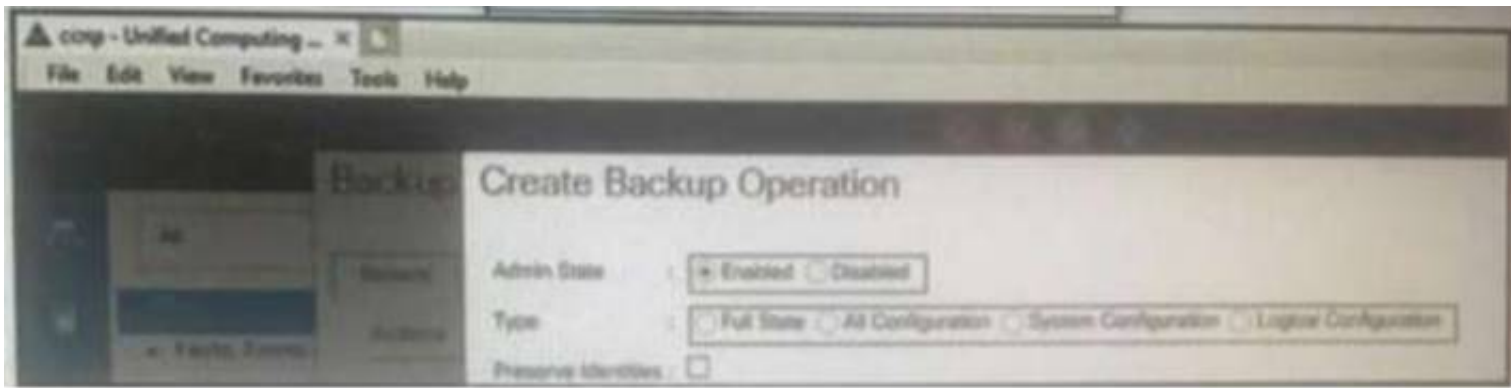
```
tclsh
foreach address {
  192.168.254.1
  192.168.254.2
  192.168.254.3
  192.168.254.4
} {cli ping $address vrf management source 192.168.254.254
}
tclquit
```

- A. Option A
- B. Option B
- C. Option C
- D. Option D

**Answer:** D

#### NEW QUESTION 168

Refer to the exhibit.



Which backup operation type not include the preserve identities feature?

- A. Full state
- B. Logical configuration
- C. System configuration
- D. All configuration

Answer: A

#### NEW QUESTION 169

Refer to the exhibit.

```
int fc1/1-2
switchmode rate dedicated
channel-group 100 force
no shut

int san-port-channel 100
switchport trunk allowed vsan 1
switchport trunk allowed vsan add 100
```

An engineer is connecting a Cisco MDS 9700 Series Multilayer Director to a downstream Cisco Nexus 5672UP switch. Which command set must be used to complete the configuration?

A)

```
int san-port-channel 100
switchport mode te
switchport trunk mode off
channel mode on
```

B)

```
int san-port-channel 100
switchport mode te
switchport trunk mode auto
channel mode on
```

C)

```
int san-port-channel 100
switchport mode e
switchport trunk mode on
channel mode active
```

D)



```
int port-channel 100
switchport mode e
switchport trunk mode on
channel mode active
```

- A. Option A
- B. Option B
- C. Option C
- D. Option D

**Answer:** A

#### NEW QUESTION 173

An engineer is converting a Cisco MDS switch to support NPIV mode. What should be considered when implementing the solution?

- A. It must be enabled on VSAN 1 only.
- B. It must be enabled globally on all VSANs.
- C. It requires mapping of external interface traffic.
- D. It requires the FLOGI database to be disabled.

**Answer:** B

#### Explanation:

[https://www.cisco.com/c/en/us/td/docs/switches/datacenter/mds9000/sw/5\\_0/configuration/guides/int/nxos/cli\\_i](https://www.cisco.com/c/en/us/td/docs/switches/datacenter/mds9000/sw/5_0/configuration/guides/int/nxos/cli_i)

#### NEW QUESTION 175

An engineer is configuring a backup operation on the existing Cisco UCS environment using a logical configuration. Which configuration is expected to be saved by using this backup type?

- A. systems
- B. roles
- C. service profiles
- D. servers

**Answer:** C

#### Explanation:

Graphical user interface, text, application, email Description automatically generated

- [Import Operations](#)
- [Restoring the Configuration for a Fabric Interconnect](#)

#### Backup and Export Configuration

When you perform a backup through Cisco UCS Manager, you take a snapshot of all or part of the system configuration and export the file to a location on your network. You cannot use Cisco UCS Manager to back up data on the servers.

You can perform a backup while the system is up and running. The backup operation only saves information from the management plane. It does not have any impact on the server or network traffic.

#### Backup Types

You can perform one or more of the following types of backups through Cisco UCS Manager:

- **Full state**—A binary file that includes a snapshot of the entire system. You can use the file generated from this backup to restore the system during disaster recovery. This file can restore or rebuild the configuration on the original fabric interconnect, or recreate the configuration on a different fabric interconnect. You cannot use this file for an import.
- **All configuration**—An XML file that includes all system and logical configuration settings. You can use the file generated from this backup to import these configuration settings to the original fabric interconnect or to a different fabric interconnect. You cannot use this file for a system restore.
- **System configuration**—An XML file that includes all system configuration settings such as usernames, roles, and locales. You can use the file generated from this backup to import these configuration settings to the original fabric interconnect or to a different fabric interconnect. You cannot use this file for a system restore.
- **Logical configuration**—An XML file that includes all logical configuration settings such as service profiles, VLANs, VSANs, pools, and policies. You can use the file generated from this backup to import these configuration settings to the original fabric interconnect or to a different fabric interconnect. You cannot use this file for a system restore.

#### Considerations and Recommendations for Backup Operations

[https://www.cisco.com/en/US/docs/unified\\_computing/ucs/sw/gui/config/guide/141/UCSM\\_GUI\\_Configuration\\_Guide\\_141\\_chapter43.html](https://www.cisco.com/en/US/docs/unified_computing/ucs/sw/gui/config/guide/141/UCSM_GUI_Configuration_Guide_141_chapter43.html)

#### NEW QUESTION 179

A network engineer must determine the cooling requirements for a Cisco UCS C-Series Rack Server. The server with PCIe cards is configured with a fan configuration policy. Which configuration should be used for the fan policy of the server?

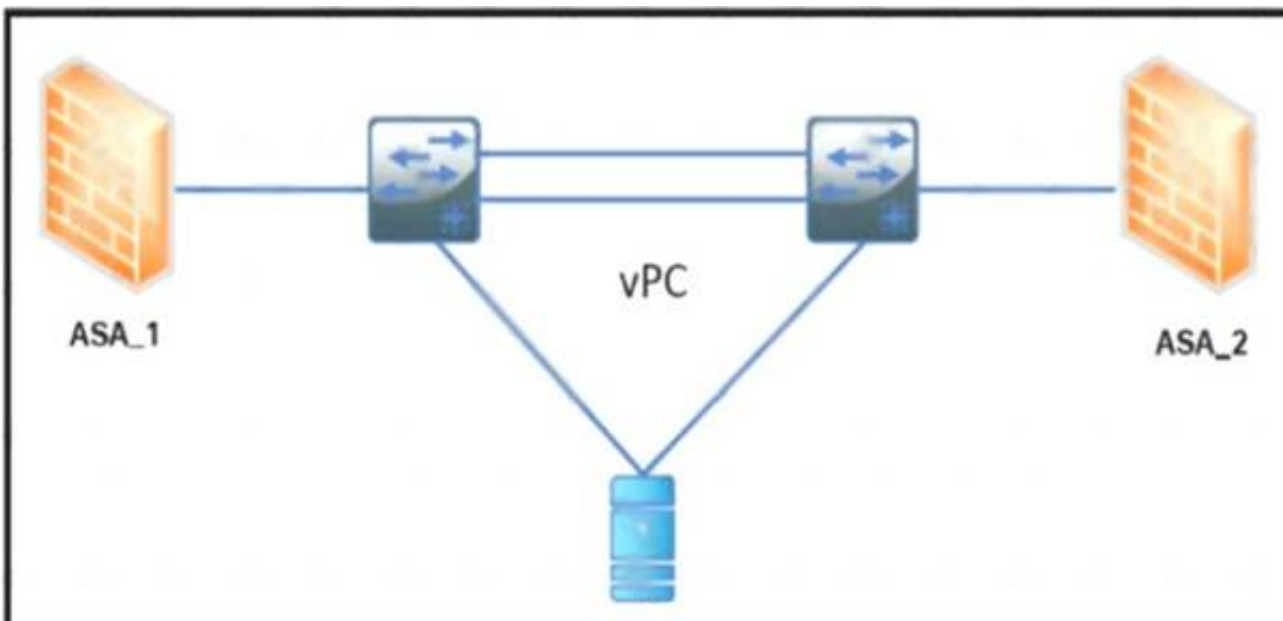
- ☐ server # scope chassis  
 server /chassis # scope fan-policy  
 server /chassis/fan-policy # set fan-policy high-power  
 server /chassis/fan-policy^ # commit
- ☐ server # scope chassis  
 server /chassis # scope fan-policy  
 server /chassis/fan-policy # set fan-policy balanced  
 server /chassis/fan-policy^ # commit
- ☐ server # scope server  
 server /server # scope fan-policy  
 server /server /fan-policy # set fan-policy acoustic  
 server /server /fan-policy^ # commit
- ☐ server # scope server  
 server /server # scope fan-policy  
 server /server /fan-policy # set fan-policy low-power  
 server /server /fan-policy^ # commit

- A. Option A
- B. Option B
- C. Option C
- D. Option D

**Answer:** A

#### NEW QUESTION 184

Refer to the exhibit



The ASA 1 acts as a Layer 3 gateway for all servers. The servers lose the gateway connectivity when the vPC peer links go down and the vPC keepalive remains up. Which action improves the high availability in the network?

- A. Create a static port channel with two links from each firewall to the switch
- B. Activate the vPC orphan-port suspend feature on the switch ports connected to the firewall
- C. Implement the IP reoVect feature on the vPC devices
- D. Enable the vPC peer gateway feature on the vPC devices

**Answer:** D

#### NEW QUESTION 185

An engineer is implementing OTV on a transport that supports multicast. The solution needs to meet the following requirements:

- Establish adjacency to the remote peer by using multicast.
- Enable OTV advertisements for VLAN 100 to the other site.

Which two commands should be configured to meet these requirements? (Choose two.)

- A. otv site-vlan 100
- B. otv data-group 232.2.2.0/28
- C. otv use-adjacency-server 172.27.255.94
- D. otv extend-vlan 100
- E. otv control-group 232.1.1.1

**Answer:** DE

#### Explanation:

[https://www.cisco.com/c/dam/en/us/products/collateral/switches/nexus-7000-series-switches/guide\\_c07-728315](https://www.cisco.com/c/dam/en/us/products/collateral/switches/nexus-7000-series-switches/guide_c07-728315)



[https://www.cisco.com/c/en/us/td/docs/switches/datacenter/sw/nx-os/OTV/config\\_guide/b\\_Cisco\\_Nexus\\_7000\\_](https://www.cisco.com/c/en/us/td/docs/switches/datacenter/sw/nx-os/OTV/config_guide/b_Cisco_Nexus_7000_)

NEW QUESTION 188

An engineer is implementing security on the Cisco MDS 9000 switch. Drag drop the descriptions from the left onto the correct security features on the right.

can be distributed via fabric services

uses the Exchange Fabric Membership Data protocol

allows a preconfigured set of Fibre Channel devices to logically connect to SAN ports

prevent unauthorized switches from joining the fabric or disrupting current fabric operations

Fabric Binding

Target 1

Target 2

Port Security

Target 3

Target 4

- A. Mastered
- B. Not Mastered

Answer: A

Explanation:

can be distributed via fabric services

uses the Exchange Fabric Membership Data protocol

allows a preconfigured set of Fibre Channel devices to logically connect to SAN ports

prevent unauthorized switches from joining the fabric or disrupting current fabric operations

Fabric Binding

prevent unauthorized switches from joining the fabric or disrupting current fabric operations

uses the Exchange Fabric Membership Data protocol

Port Security

can be distributed via fabric services

allows a preconfigured set of Fibre Channel devices to logically connect to SAN ports

NEW QUESTION 190

Refer to the exhibit.

```
import time
import os

date= time.strftime('%Y%m%d')
file= ('fusion-config_') + date
cli.execute ('copy running-config ftp://10.183.249.182/FusionSW/' + file)
exit()
```

What is the result of executing this python code?

- A. It backs up Cisco switches to Cisco Prime infrastructure.
- B. It sends the switch configuration to Cisco TAC.
- C. It sends a Cisco device backup to a remote destination.
- D. It schedules a backup on a Cisco switch using EEM.

Answer: C

NEW QUESTION 195

An engineer configures a storage environment for a customer with high- security standards. The secure environment is configured in vsan 50. The customer wants to maintain a configuration and active databases and prevent unauthorized switches from joining the fabric. Additionally, the switches must prevent rogue devices from connecting to their ports by automatically learning the WWPNs of the ports connected to them for the first time. Which two configuration sets must be used to meet these requirements? (Chose two.)



- ☐ port-security enable  
port-security activate vsan 50
- ☐ clear fabric-binding activate vsan 50  
fabric-binding activate vsan 50
- ☐ fabric-binding activate vsan 50 force
- ☐ fcsp enable  
fcsp auto-active
- ☐ fcsp dhchap hash md5 sha1

- A. Option A
- B. Option B
- C. Option C
- D. Option D
- E. Option E

**Answer:** AC

#### NEW QUESTION 198

What is a characteristic of the NFS protocol?

- A. It is used for booting Cisco UCS B-Series servers.
- B. It is used to access a storage array at a block level.
- C. It uses UDP and HTTP as its transport.
- D. It uses remote procedure calls with TCP/IP for transport.

**Answer:** D

#### NEW QUESTION 201

Refer to the exhibit.

```
MDSSWITCH# config terminal
MDSSWITCH(config)# foip profile 1
MDSSWITCH(config-profile)# ip address 192.0.1.10
MDSSWITCH(config-profile)# port 5000
MDSSWITCH(config-profile)# tcp max-bandwidth-mbps 5000
min-available-bandwidth-mbps 4000 round-trip-time-ms 1
MDSSWITCH(config-profile)# exit
MDSSWITCH(config)# interface foip 1
MDSSWITCH(config-if)# use-profile 1
MDSSWITCH(config-if)# peer-info ipaddr 192.0.1.11
MDSSWITCH(config-if)# tcp-connections 1
MDSSWITCH(config-if)# ip-compression mode2
MDSSWITCH(config-if)# no shutdown
MDSSWITCH(config-if)# exit
MDSSWITCH(config)# interface ipStorage 1/1
MDSSWITCH(config-if)# ip address 192.0.1.10 255.255.255.0
MDSSWITCH(config-if)# switchport mtu 2500
MDSSWITCH(config-if)# no shutdown
MDSSWITCH(config-if)# end
```

An engineer configures FCIP on a Cisco MDS 9000 Series switch. What is the result of implementing the configuration?

- A. The switch attempts to make two TCP connections
- B. Compression is performed by using hardware
- C. Mode2 is enabled by default.
- D. Compression is performed by using software.

**Answer:** B

#### Explanation:

[https://www.cisco.com/c/en/us/td/docs/switches/datacenter/mds9000/sw/8\\_x/config/ip\\_services/ipsvc/cfcip.html](https://www.cisco.com/c/en/us/td/docs/switches/datacenter/mds9000/sw/8_x/config/ip_services/ipsvc/cfcip.html)

#### NEW QUESTION 203

An engineer must perform a POAP deployment of a Cisco Nexus 9000 Series Switch. The switch must automatically receive its software image and configuration file upon power-on. Also, only UDP is permitted between the Nexus 9000 switch and the server that hosts the Cisco NX-OS system images. Which set of actions completes the configuration?

- A. Enable option 67. Define TFTP transfer protocol
- B. Enable option 43. Define HTTP transfer protocol.

- C. Enable option 46. Define TFTP transfer protocol  
D. Enable option 35. Define HTTP transfer protocol.

**Answer:** A

#### NEW QUESTION 206

A network engineer must configure a power redundancy policy on a Cisco UCS C-Series Rack Server. The power redundancy must support two power sources being used to power the server. Which configuration should be applied to meet the requirement?

- ☐ server# scope org /  
server /org # scope psu-policy  
server /org/psu-policy # set redundancy N+1  
server /org/psu-policy\* # commit-buffer
- ☐ server# scope org /  
server /org # scope psu-policy  
server /org/psu-policy # set psu-redundancy-policy grid  
server /org/psu-redundancy-policy\* # commit-buffer
- ☐ server# scope org /  
server /org # scope psu-policy  
server /org/psu-policy # set psu-redundancy-policy N+1  
server /org/psu-redundancy-policy\* # commit-buffer
- ☐ server# scope org /  
server /org # scope psu-policy  
server /org/psu-policy # set redundancy grid  
server /org/psu-policy\* # commit-buffer

- A. Option A  
B. Option B  
C. Option C  
D. Option D

**Answer:** D

#### Explanation:

[https://www.cisco.com/c/en/us/td/docs/unified\\_computing/ucs/ucs-manager/CLI-User-Guides/Server-Mgmt/3-1](https://www.cisco.com/c/en/us/td/docs/unified_computing/ucs/ucs-manager/CLI-User-Guides/Server-Mgmt/3-1) The command "N+1" is invalid. The command should be "n-plus-1"

	Command or Action	Purpose
Step 1	UCS-A# scope org org-name	Enters organization mode for the specified organization. To enter the root organization mode, type / as the org-name .
Step 2	UCS-A /org # scope psu-policy	Enters PSU policy mode.
Step 3	UCS-A /org/psu-policy # set redundancy (grid   n-plus-1   non-redund)	Specifies one of the following redundancy types: <ul style="list-style-type: none"> <li>• <b>grid</b> –Two power sources are turned on, or the chassis requires greater than N+1 redundancy. If one source fails (which causes a loss of power to one or two PSUs), the surviving PSUs on the other power circuit continue to provide power to the chassis.</li> <li>• <b>n-plus-1</b> –The total number of PSUs to satisfy non-redundancy, plus one additional PSU for redundancy, are turned on and equally share the power load for the chassis. If any additional PSUs are installed, Cisco UCS Manager sets them to a "turned-off" state.</li> <li>• <b>non-redund</b> –All installed power supplies (PSUs) are turned on and the load is evenly balanced. Only smaller configurations (requiring less than 2500W) can be powered by a single PSU.</li> </ul> For more information about power redundancy, see the <i>Cisco UCS 5108 Server Chassis Installation Guide</i> .
Step 4	UCS-A /org/psu-policy # commit-buffer	Commits the transaction to the system configuration.

#### NEW QUESTION 207

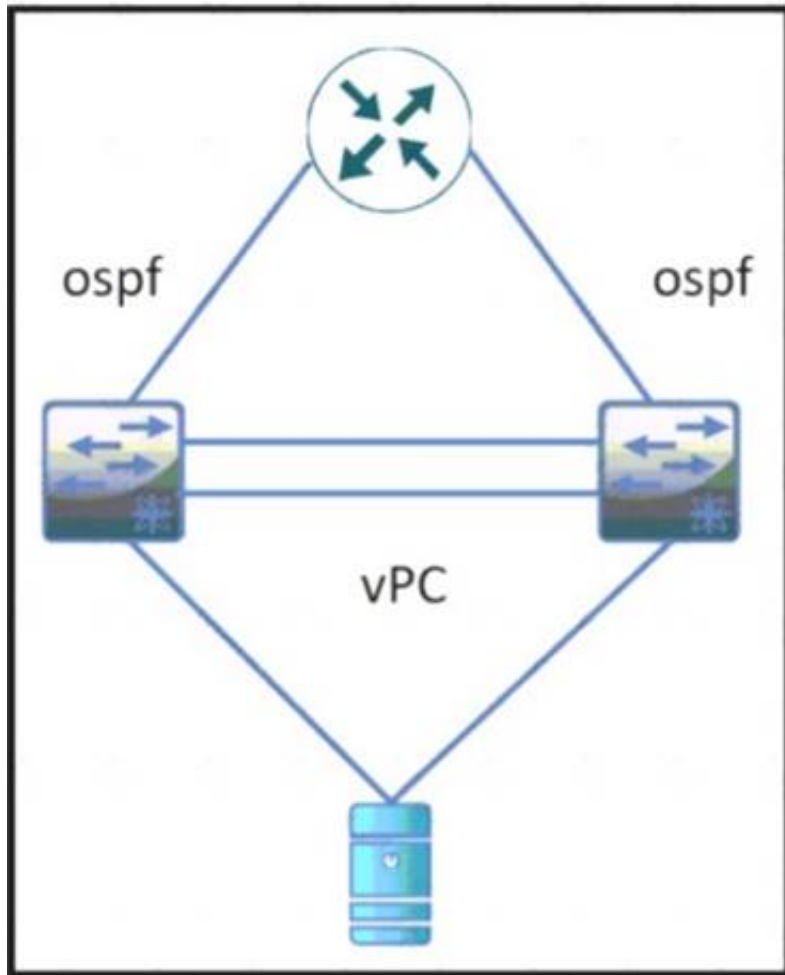
An engineer must generate a checkpoint of the running configuration on a Cisco Nexus Switch. The checkpoint file name must be called "before\_maintenance" and should be used for recovering the switch to its pre- maintenance state. The rollback of the checkpoint to running configuration should only occur if no errors occur. Which two configuration commands must be used to meet these requirements? (Choose two.)

- A. rollback checkpoint file before\_maintenance stop-at-first-failure  
B. rollback running-confli checkpoint before.maintenance  
C. checkpoint file before\_maintenance  
D. checkpoint before.maintenance  
E. rollback running-confli file before\_maintenance atomic

**Answer:** CE

**NEW QUESTION 209**

Refer to the exhibit



During a vPC peer switch reload, there is packet loss between the server and the router Which action must be taken to prevent this behavior during future reloads?

- A. Set the routed uplink ports of the Cisco Nexus peers as orphans.
- B. Increase the vPC delay restore timer.
- C. Decrease the OSPF hello and dead interval timers.
- D. Disable vPC ARP synchronize on the vPC peers.

**Answer: B**

**NEW QUESTION 210**

An engineer is implementing FCoE. Which aspect of DCBXP on a Cisco Nexus switch affects this implementation?

- A. It uses the Cisco Fabric Services protocol to exchange parameters between two peer links.
- B. It always is enabled on 10/100-Mbps native Ethernet ports.
- C. It provides the authentication of peers on the Cisco Nexus switch.
- D. It requires that LLDP transmit and LLDP receive are enabled on the FCoE interface.

**Answer: D**

**Explanation:**

The Data Center Bridging Exchange Protocol (DCBXP) is an extension of LLDP. It is used to announce, exchange, and negotiate node parameters between peers. DCBXP parameters are packaged into a specific DCBXP TLV. This TLV is designed to provide an acknowledgement to the received LLDP packet. DCBXP is enabled by default, provided LLDP is enabled. DCBXP is disabled on ports where LLDP transmit or receive is disabled.

[https://www.cisco.com/c/en/us/td/docs/switches/datacenter/nexus5000/sw/layer2/503\\_n2\\_1/b\\_Cisco\\_n5k\\_layer2](https://www.cisco.com/c/en/us/td/docs/switches/datacenter/nexus5000/sw/layer2/503_n2_1/b_Cisco_n5k_layer2)

**NEW QUESTION 212**

An engineer is implementing traffic monitoring for a server vNIC that is configured with fabric failover enabled. The requirement is for the traffic to be sent to an analyzer, even during a failure of one of the fabric interconnects. The analyzer is connected to unconfigured Ethernet ports on both fabric interconnects. Which configuration accomplishes this task?

- A. Create two traffic monitoring session with different names, one per fabric Connect the analyzer connected to FI-BI the destination for both monitoring sessions.
- B. Create two traffic monitoring session with different names, one per fabric.
- C. Connect an analyser on each FI as the destination for the monitoring session local to the FI.
- D. Create two traffic monitoring sessions with the same name, one per fabric Connect the analyze connected to FI-A as the destination for both monitoring sessions

**Answer: A**

**NEW QUESTION 214**

An engineer must affirm the identity of the Cisco UCS Manager after a valid CA-signed keyring for HTTPS access is created. Which action completes the configuration?

- A. Set Cipher Suite Mode
- B. Create a trusted point
- C. Implement SSLv3
- D. Enable TLSv1.2

**Answer: B**



#### NEW QUESTION 219

Refer to the exhibit.

```
interface Ethernet1/1
  description Server1
interface Ethernet1/2
  description Server2
interface Ethernet1/3
  description Server3
interface Ethernet1/4
  description Server4
interface Ethernet1/5
  description Server5
```

Which command is run from the Guest Shell to set the description on the first five interfaces of the Cisco Nexus switch?

- ☐ [guestshell@guestshell ~]\$ for x in (1..5); do dohost "conf t" ; "interface eth1/\$x" ; "description Server\$x" ; done
- ☐ [guestshell@guestshell ~]\$ for x in (1..5); dohost "conf t ; interface eth1/\$x ; description Server\$x";
- ☐ [guestshell@guestshell ~]\$ for x in (1..5); dohost "conf t ; interface eth1/\$x ; description Server\$x" ;
- ☐ [guestshell@guestshell ~]\$ for x in (1..5); do dohost "conf t ; interface eth1/\$x ; description Server\$x" ; done

- A. Option A
- B. Option B
- C. Option C
- D. Option D

**Answer:** D

#### Explanation:

NXs1# guestshell

[admin@guestshell ~]\$ for x in {1..5}; do dohost "conf t ; interface eth1/\$x ; description Server\$x" ; done Enter configuration commands, one per line. End with CNTL/Z.

Enter configuration commands, one per line. End with CNTL/Z. Enter configuration commands, one per line. End with CNTL/Z. Enter configuration commands, one per line. End with CNTL/Z. Enter configuration commands, one per line. End with CNTL/Z. [admin@guestshell ~]\$

#### NEW QUESTION 221

A network engineer needs a tool to automate the provisioning of Cisco UCS Service Profiles. The administrator has limited programming knowledge but is skilled with scripting tools. The tool must include existing support for Cisco UCS configuration. Additionally, the administrator will eventually use the solution to manage Cisco UCS C-Series Rack Servers. Which tool meets these requirements?

- A. Cisco DCNM
- B. Python scripts
- C. PowerShell
- D. Bash scripts

**Answer:** C

#### NEW QUESTION 223

An engineer must configure the order in which the server attempts to boot from available boot device types using Cisco Integrated Management Controller (Cisco IMC). The engineer must change the boot order configuration during the setup and apply the new requirements multiple times. The requirement is to change the Cisco IMC actual boot order so it is different from the configured boot order. Which setting accomplishes this goal?

- A. Enable the system to boot with the configured boot order.
- B. Set the boot configuration directly through BIOS.
- C. Configure the legacy and precision boot order to be mutually exclusive.
- D. Apply UEFI Secure Boot for a nonsupported operating system.

**Answer:** A

#### Explanation:

[https://www.cisco.com/en/US/docs/unified\\_computing/ucs/c/sw/gui/config/guide/1.5/b\\_Cisco\\_UCS\\_C-series\\_G](https://www.cisco.com/en/US/docs/unified_computing/ucs/c/sw/gui/config/guide/1.5/b_Cisco_UCS_C-series_G)

#### NEW QUESTION 226

A bridge domain is being extended out of a Cisco ACI fabric. Between which of these components are policies used to identify the connectivity between Endpoint Groups and the external connection?

- A. an external bridge domain and an external routed domain
- B. internal contracts and external contracts
- C. internal EPGs and external EPGs
- D. L2Out and L3Out

Answer: D

NEW QUESTION 229

An engineer is configuring VNTag between a virtualized server and a Cisco Nexus 5500 Series switch. Drag and drop the configuration steps from the into the correct order on the right.

Configure support for VNTag mode on the interface that connects to the server.	Step 1
Configure the vNICs of the server.	Step 2
Configure the server to support NIV mode.	Step 3
Enable the virtualization feature set.	Step 4
Configure the port profile.	Step 5
Install the virtualization feature set.	Step 6

- A. Mastered
- B. Not Mastered

Answer: A

Explanation:

install the virtualization feature set  
Enable the virtualization feature set  
Configure the port profile  
Configure support for VNTag mode on the interface that connects to the server.  
Configure the server to support NIV mode  
Configure the vNICs of the server  
<https://www.cisco.com/c/en/us/support/docs/switches/nexus-5000-series-switches/117691-config-5500switch-00.html>  
[https://www.cisco.com/c/en/us/td/docs/switches/datacenter/nexus5500/sw/adapter-fex/6x/b\\_5500\\_Adapter\\_FEX\\_Config\\_6x/b\\_5500\\_Adapter\\_FEX\\_Config\\_602N11\\_chapter\\_010.html](https://www.cisco.com/c/en/us/td/docs/switches/datacenter/nexus5500/sw/adapter-fex/6x/b_5500_Adapter_FEX_Config_6x/b_5500_Adapter_FEX_Config_602N11_chapter_010.html)

NEW QUESTION 231

A network administrator must perform a system upgrade on a Cisco MDS 9000 Series Switch. Due to the recent changes by the security team:

- The AAA server is unreachable.
- All TCP communication between the MDS 9000 Series Switch and AAA servers is disabled. Which actions must be used to perform the upgrade?

- A. Log in locally to the MDS 9000 Series Switch using a network-admin role and download the upgrade files from the remote TFTP server.
- B. Log in locally to the MDS 9000 Series Switch using a server-admin role and download the upgrade files from the remote FTP server.
- C. Log in to a server storing the upgrade files remotely using a server-admin role and download the files to the MDS 9000 Series Switch using SFTP.
- D. Log in to a server storing the upgrade files remotely using a network-admin role and download the files to the MDS 9000 Series Switch using HTTP.

Answer: A

NEW QUESTION 233

Refer to the exhibit.

```
switch# show radius-server
Global RADIUS shared secret:*****
retransmission count:5
timeout value:10
following RADIUS servers are configured:
  myradius.cisco.users.com:
    available for authentication on port:1812
    available for accounting on port:1813
  172.22.91.37:
    available for authentication on port:1812
    available for accounting on port:1813
    RADIUS shared secret:*****
  10.10.0.0:
    available for authentication on port:1812
    available for accounting on port:1813
    RADIUS shared secret:*****

switch# show radius-server groups
total number of groups:4
following RADIUS server groups are configured:
  group radius:
    server: all configured radius servers
  group Group1:
    server: Server3 on auth-port 1812, acct-port 1813
    server: Server5 on auth-port 1812, acct-port 1813
  group Group5:
```

A network engineer requires remote access via SSH to a Cisco MDS 9000 Series Switch. The solution must support secure access using the local user database when the RADIUS servers are unreachable from the switches. Which command meets these requirements?

- A. aaa authentication none
- B. aaa authentication login default group radius
- C. aaa authentication login default group local
- D. aaa authentication login default fallback error local

**Answer:** D

**Explanation:**

[https://www.cisco.com/c/en/us/td/docs/switches/datacenter/mds9000/sw/6\\_2/configuration/guides/security/nx-o](https://www.cisco.com/c/en/us/td/docs/switches/datacenter/mds9000/sw/6_2/configuration/guides/security/nx-o)

### Configuring Fallback Mechanism for Authentication

You can enable/disable fallback to local database in case the remote authentication is set and all AAA servers are unreachable (authentication error). The fallback is set to local by default in case of an authentication error. You can disable this fallback for both console and ssh/telnet login. Disabling this fallback will tighten the security of authentication.

The following steps explain the fallback mechanism for authentication:

**Step 1** By default fallback will be enabled for both default/console login. The “sh run aaa all” command can be used to verify this.

**Step 2** Disabling fallback will print a warning message.

The CLI syntax and behavior is as follows:

	Command	Purpose
Step 1	switch# <b>config t</b> switch(config)#	Enters configuration mode.
Step 2	switch(config)# show run aaa all aaa authentication login default fallback error local aaa authentication login console fallback error local	Displays the default fallback behavior.
Step 3	switch(config)# <b>no aaa authentication login default fallback error local</b> WARNING!!! Disabling fallback can lock your switch.	Disables the fallback to local database for authentication. <b>Note</b> Replace default with console in this command to disable fallback to console.

### NEW QUESTION 236

Which service profile is affected if the default host firmware policy in Cisco UCS Manager is changed?

- A. any service profile that has no host firmware policy defined
- B. any service profile that uses a user-created host firmware policy
- C. any service profile that is not in the root sub-org
- D. any service profile that uses the global-default host firmware policy

**Answer:** A

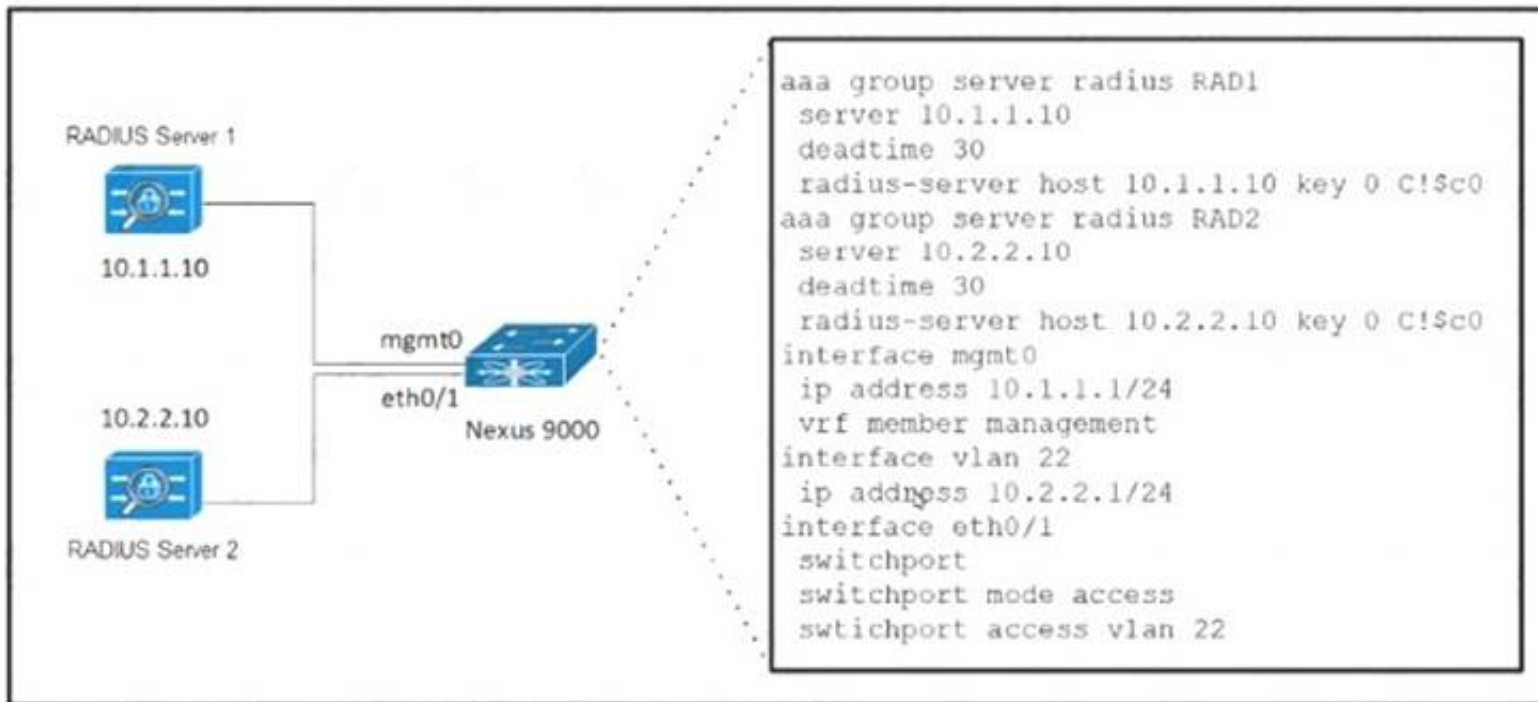


**Explanation:**

[https://www.cisco.com/c/en/us/td/docs/unified\\_computing/ucs/ucs-manager/GUI-User-Guides/Firmware-Mgmt/3-1/b\\_UCSM\\_GUI\\_Firmware\\_Management\\_Guide\\_3\\_1/b\\_UCSM\\_GUI\\_Firmware\\_Management\\_Guide\\_3\\_1\\_chapter\\_011.html](https://www.cisco.com/c/en/us/td/docs/unified_computing/ucs/ucs-manager/GUI-User-Guides/Firmware-Mgmt/3-1/b_UCSM_GUI_Firmware_Management_Guide_3_1/b_UCSM_GUI_Firmware_Management_Guide_3_1_chapter_011.html)

**NEW QUESTION 238**

Refer to the exhibit.



A user must be granted management access to the Cisco Nexus 9000 Series Switch using AAA servers. The RADIUS servers are configured to accept login requests from the same Layer 2 subnet of the switch. The user must be permitted to log in with these requirements:

- RADIUS server 1 must be used to log in via a console.
- RADIUS server 2 must be used to log in via SSH.

Which two actions meet these requirements?

- A. Enable command authorization to RAD1 and RAD2 for all successful logins.
- B. Change the dead timer for RAD1 and RAD2 to 1 minute.
- C. Set the RADIUS source interface to be mgmt0 for group RAD1 and VLAN 22 for group RAD2.
- D. Configure the authentication login to use group RAD1 for console and group RAD2 for remote access.

**Answer: AD**

**NEW QUESTION 241**

An infrastructure architect is analyzing the deployment type for an application. Several companies must be able to operate the application environment and integrate it with a third-party protocol. The development team also must have maximum control over their development environment, including the operating system used, Python interpreter, and corresponding libraries. Which cloud deployment solution meets these requirements?

- A. public cloud Storage as a Service
- B. private cloud Platform as a Service
- C. hybrid cloud Software as a Service
- D. community cloud Infrastructure as a Service

**Answer: D**

**NEW QUESTION 243**

An engineer must configure a VDS port group using APIC policy. The requirements are for the frames to be mapped to a particular Layer 2 network and for the virtual machine assigned to the port group to receive all frames passed on the virtual switch. Which two settings must be used to meet these requirements? (Choose two.)

- A. forged transmits
- B. VMDirectPath
- C. port binding
- D. promiscuous mode
- E. VLAN

**Answer: CD**

**NEW QUESTION 248**

.....

## Thank You for Trying Our Product

### We offer two products:

1st - We have Practice Tests Software with Actual Exam Questions

2nd - Questions and Answers in PDF Format

### 350-601 Practice Exam Features:

- \* 350-601 Questions and Answers Updated Frequently
- \* 350-601 Practice Questions Verified by Expert Senior Certified Staff
- \* 350-601 Most Realistic Questions that Guarantee you a Pass on Your First Try
- \* 350-601 Practice Test Questions in Multiple Choice Formats and Updates for 1 Year

**100% Actual & Verified — Instant Download, Please Click**  
**[Order The 350-601 Practice Test Here](#)**