



## **Cisco**

### **Exam Questions 200-901**

Developing Applications and Automating Workflows using Cisco Core Platforms (DEVASC)

## About Exambible

*[Your Partner of IT Exam](#)*

## Found in 1998

Exambible is a company specialized on providing high quality IT exam practice study materials, especially Cisco CCNA, CCDA, CCNP, CCIE, Checkpoint CCSE, CompTIA A+, Network+ certification practice exams and so on. We guarantee that the candidates will not only pass any IT exam at the first attempt but also get profound understanding about the certificates they have got. There are so many alike companies in this industry, however, Exambible has its unique advantages that other companies could not achieve.

## Our Advances

### \* 99.9% Uptime

All examinations will be up to date.

### \* 24/7 Quality Support

We will provide service round the clock.

### \* 100% Pass Rate

Our guarantee that you will pass the exam.

### \* Unique Gurantee

If you do not pass the exam at the first time, we will not only arrange FULL REFUND for you, but also provide you another exam of your claim, ABSOLUTELY FREE!

### NEW QUESTION 1

- (Exam Topic 2)

A developer needs a list of clients connected to a specific device in a Meraki network. After making a REST API call, the developer receives an unfamiliar response code. Which Cisco DevNet resource should be used to identify the meaning of the response code?

- A. API documentation
- B. Sandbox
- C. Learning Labs
- D. Code Exchange

**Answer: A**

### NEW QUESTION 2

- (Exam Topic 2)

What is a capability of the NETCONF protocol?

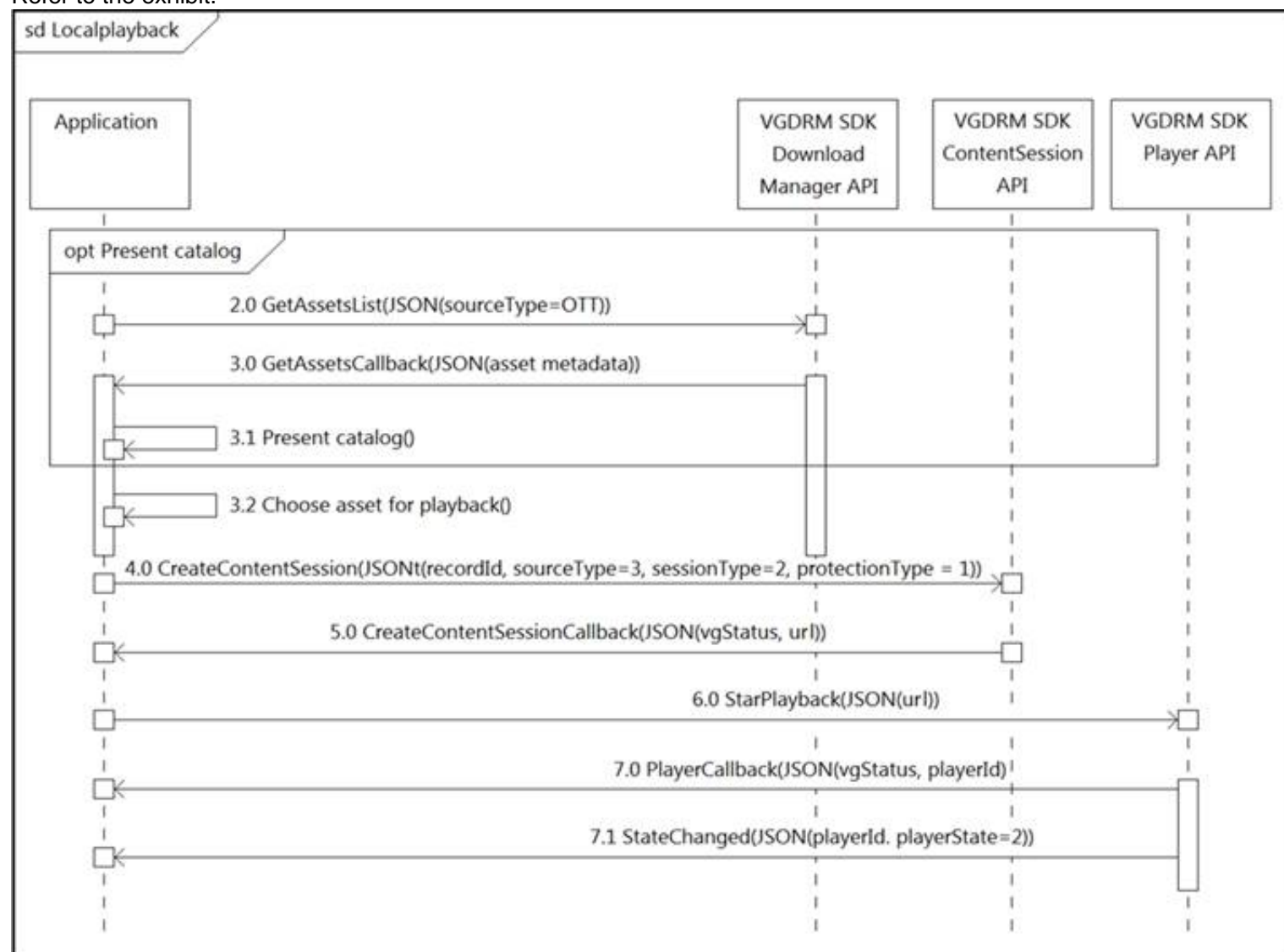
- A. allows Python scripts to be executed externally from a network device
- B. uses JSON to encode data in its content layer
- C. allows XML messages to be exchanged via the SSH protocol
- D. exposes a web-based interface

**Answer: C**

### NEW QUESTION 3

- (Exam Topic 2)

Refer to the exhibit.



What do all the calls shown in the sequence diagram have in common?

- A. All the calls are optional.
- B. All the calls are asynchronous.
- C. All the calls are synchronous.
- D. All the calls depend on the catalog.

**Answer: D**

### NEW QUESTION 4

- (Exam Topic 2)

Which protocol runs over TCP port 23?

- A. SSH
- B. NETCONF
- C. HTTP
- D. Telnet

**Answer: D**

### NEW QUESTION 5

- (Exam Topic 2)

Refer to the exhibit.

```
1  from requests import request
2  from requests.auth import HTTPBasicAuth
3  from sys import argv
4  url = "https://" + argv[1] + ":443/restconf/data/native/ip/route"
5  auth = HTTPBasicAuth('developer', 'Cisc012345')
6  payload = {
7      "Cisco-IOS-XE-native:route": {
8          "ip-route-interface-forwarding-list": [
9              {
10                 "prefix": argv[2],
11                 "mask": argv[3],
12                 "fwd-list": [
13                     {
14                         "fwd": "GigabitEthernet2",
15                         "interface-next-hop": [
16                             {
17                                 "ip-address": argv[4]
18                             }
19                         ]
20                     }
21                 ]
22             }
23         ]
24     }
25 }
26 headers = {
27     'Content-Type': 'application/yang-data+json',
28     'Accept': 'application/yang-data+json',
29 }
30 response = request("PATCH", url, auth=auth, headers=headers, json = payload,
31                     verify=False)
```

A network engineer must change the configuration on devices daily. The Python script must collect CLI arguments from the user, organize data according to the Cisco-IOS-XE-native YANG model, and utilize Cisco REST APIs to make the configuration. Which workflow is being automated by the Python script?

- A. updating an existing route on the device
- B. adding a new route to a device
- C. including a route on the device and overwriting the current routes
- D. deleting the route that is passed through the command-line variables

**Answer:** A

### NEW QUESTION 6

- (Exam Topic 2)

A company wants to accelerate the adoption of technologies that will simplify its operations. Staff have different skill levels and are looking for a single site to find easy-to-consume beginner, intermediate, and advanced multidomain use cases. Which site should be used?

- A. DevNet Ecosystem Exchange
- B. DevNet Automation Exchange
- C. DevNet Creations
- D. DevNet Support Forum

**Answer:** D

### NEW QUESTION 7

- (Exam Topic 2)

Refer to the exhibit.

```
import requests
from requests.auth import HTTPBasicAuth
from config import url, username, password
response = requests.login(url, auth=HTTPBasicAuth (username, password), verify=False)
print response.status_code
```

The script returns an output of 401. To use the supplied URL, an HTTP GET request must be sent with an Authorization header. The header value is a Base64 encoded concatenation of the username and password. Which action must be taken to return an output of 200?

- A. Change the verify=False setting in the request to verify=True to enable HTTP Basic authentication
- B. Modify the method from LOGIN to GET and supply the username ;password value as JSON payload
- C. Verify that the username and password values imported from the configuration file are still valid.
- D. Insert an Authorization header with the values username password from the supplied configuration file.

**Answer:** C

### NEW QUESTION 8

- (Exam Topic 2)

Refer to the exhibit.

**API v1 documentation:**

Authentication and authorization: Bearer Token

Inventory endpoint: /api/v1/inventory

Method: GET

Response formats: text/html, application/json,  
application/html

**Token:**

dXNlcm5hbWU6cGFzc3dvcmQ=

**Api call:**

GET /api/v1/inventory HTTP/1.1

Host: example.com

**Response:**

HTTP/1.1 401 Unauthorized

An API call is constructed to retrieve the inventory in XML format by using the API. The response to the call is 401 Unauthorized. Which two headers must be added to the API call? (Choose two.)

- ☐ Accept: application/xml
- ☐ Content-Type: application/xml
- ☐ Authentication: Bearer dXNlcm5hbWU6cGFzc3dvcmQ=
- ☐ Bearer-Token: dXNlcm5hbWU6cGFzc3dvcmQ=
- ☐ Authorization: Bearer dXNlcm5hbWU6cGFzc3dvcmQ=

- A. Option A
- B. Option B
- C. Option C
- D. Option D
- E. Option E

**Answer:** BE

**NEW QUESTION 9**

- (Exam Topic 2)

Before which process is code review performed when version control is used?

- A. Branching code
- B. Merge of code
- C. Checkout of code
- D. Committing code

**Answer:** D

**NEW QUESTION 10**

- (Exam Topic 2)

What is the purpose of a MAC address on a network device?

- A. unique network address that identifies the network interface of a device
- B. unique network interlace address that is provided by the DHCP server
- C. unique hardware address that identifies the network interface of a device
- D. unique hardware interface address that is provided by the central switch

**Answer:** C

**NEW QUESTION 10**

- (Exam Topic 2)

A new application is being developed with specific platform requirements. The platform and application deployment and the ongoing platform management must be fully automated. The application includes a large database component that has significant disk I/O requirements. Which application deployment type meets the requirements?

- A. Python virtual environment
- B. virtual machine
- C. bare metal
- D. container

**Answer:** B

#### NEW QUESTION 13

- (Exam Topic 2)

Which API must an engineer use to change a netmask on a Cisco IOS XE device?

- A. Meraki
- B. RESTCONF/YANG
- C. SD-WAN
- D. DNAC

**Answer:** B

#### NEW QUESTION 14

- (Exam Topic 2)

What is a benefit of organizing code into modules?

- A. improves overall performance
- B. reduces the length of code
- C. enables code to be multifunctional
- D. enables the reuse of code

**Answer:** D

#### NEW QUESTION 19

- (Exam Topic 2)

In which two ways is an application characterized when interacting with a webhook? (Choose two.)

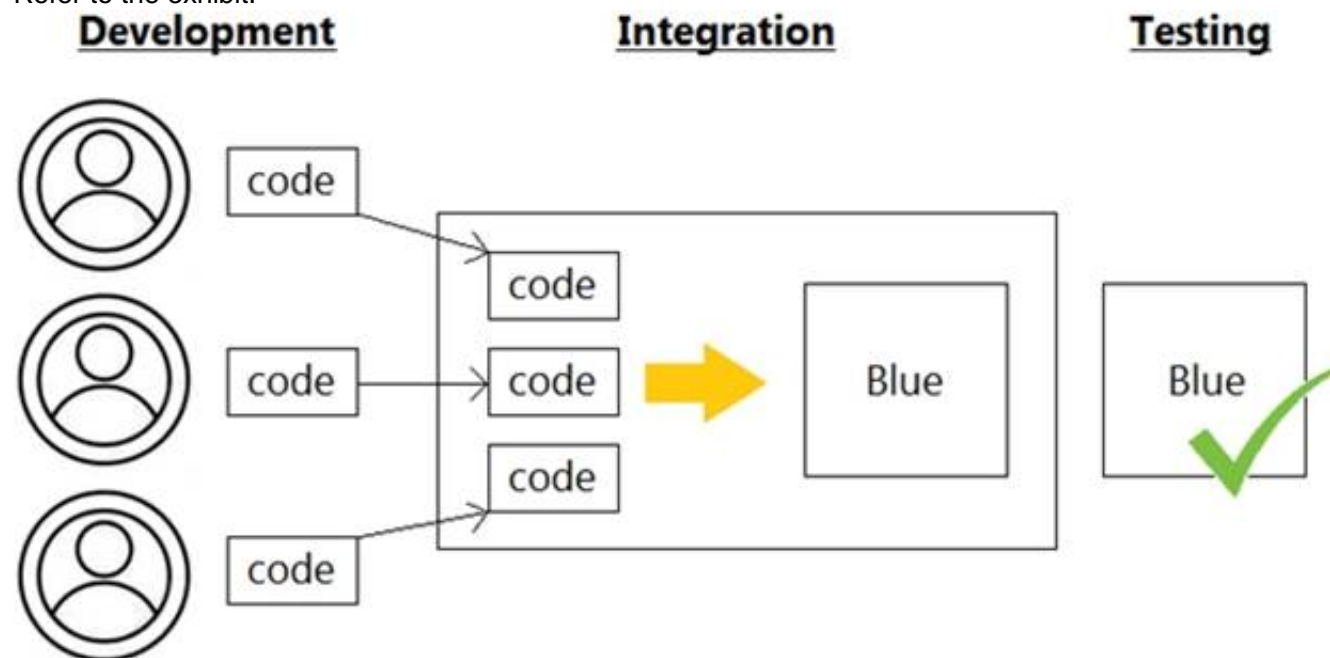
- A. codec
- B. receiver
- C. transaction monitor
- D. processor
- E. listener

**Answer:** BE

#### NEW QUESTION 20

- (Exam Topic 2)

Refer to the exhibit.



Which infrastructure automation method is shown?

- A. Waterfall
- B. CI/CD pipeline
- C. Agile
- D. Lean

**Answer:** C

#### NEW QUESTION 23

- (Exam Topic 2)

Drag and drop the code snippets from the bottom into the Python script to write API output to a csv file. Not all options are used.



```
#!/usr/bin/env python3
import csv
import json
import 
#Create a request to grab info in api
response = requests.  ('http://api.zippopotam.us/us/80301')

try:
    with open('80301.json', 'w') as outfile:
        json.dump(response.json(), outfile)
    print(  .json())
except Exception as e:
    print(e)

with open('80301.csv', 'w') as outfile:
    json.dump(response.json(), outfile)
print(response.  )
```

- A. Mastered  
B. Not Mastered

**Answer:** A

**Explanation:**

Graphical user interface, text, application Description automatically generated

**NEW QUESTION 26**

- (Exam Topic 2)

A developer creates a web application that receives a username and password and uses them to sync the credentials to other services through HTTPS. API keys to services are part of the configuration files of the application, but the credentials to the database that stores the synchronization logs are obtained through an external vault service. What is the security issue in this scenario?

- A. Communication between the application and the services is not encrypted.  
B. The database credentials should be stored in the configuration files so that they are secured on the same server.  
C. The API keys are stored in the configuration files but should be stored in the vault service.  
D. The synchronization logs should be encrypted and not stored in a relational database.

**Answer:** A

**NEW QUESTION 28**

- (Exam Topic 2)

A developer is trying to retrieve data over a REST API. The API server responds with an HTTP client error response code. After investigating the response the developer realizes the response has a Retry-After header. What is the root cause of this error?

- A. The REST service is unreachable at the time of the REST request  
B. Too many requests were sent to the REST service in a given amount of time.  
C. An appliance limited the rate of requests to the transport layer.  
D. An appliance limited the rate of requests to the application layer

**Answer:** B

**NEW QUESTION 33**

- (Exam Topic 2)

Refer to the exhibit.

```
1 #import dnac sdk
2 from dnacentersdk import DNACenterAPI
3 #connection to dnac
4
5 username = 'user1'
6 password = 'secret'
7 base_url = 'https://192.168.1.1'
8
9 dnac = DNACenterAPI(username=username, password=password, base_url=base_url,
10 • version='1.3.3', verify=False)
11
12 # Get list of ports on device using get all interfaces API call
13 port_list_1 = [item['portName'] for item in
14 • dnac.devices.get_all_interfaces()['response']]
15
16 if 'da4606c3-63ad-4ed4-8f35-6bfec7c2df04' in
17 item['deviceId']]
18
19 # Sort list items
20 port_list_1.sort()
21 # Check the number of ports on the device
22 print(f'The list of interfaces contains {len(port_list_1)} items.')
23
24 # Output
25 # The list of interfaces contains 38 items.
26
27
28 # Get list of interfaces using the get interface info by device id api call
29 port_list_2 = [item['portName'] for item in
30 • dnac.devices.get_interface_info_by_id('da4606c3-63ad-4ed4-8f35-
31 • 6bfec7c2df04')['response']]
32
33 # Sort list items
34 port_list_2.sort()
35 # Check the number of ports on the device
36 print(f'The list of interfaces contains {len(port_list_2)} items.')
37
38 # Output
39 # The list of interfaces contains 54 items.
```

An engineer writes a Python script that uses two different API calls to query Cisco DNA Center for the number of interfaces on a device. The engineer notices that the two API calls produce different results. Why are fewer interfaces returned for the same device when the 'get\_all\_interfaces' API call is used?

- A. times out
- B. rate limit
- C. pagination
- D. invalid password

**Answer: C**

#### NEW QUESTION 36

- (Exam Topic 2)

What are two benefits of model-driven programmability?

- A. model-driven APIs for abstraction and simplification
- B. single choice of transport, protocol, and encoding
- C. model-based, structured, and human friendly
- D. easier to design, deploy, and manage APIs
- E. models decoupled from transport, protocol, and encoding

**Answer: DE**

#### NEW QUESTION 38

- (Exam Topic 2)

What are two use case where webhooks are effective? (Choose two.)

- A. Close a session with a web server after a specific amount of time.
- B. Filter out information from a response to an API call
- C. Change the response format or content type of an API call.
- D. Inform a previously defined chat channel after a deployment fate.
- E. Send an email to a customer of an online store after payment is complete

**Answer: DE**

#### NEW QUESTION 39

- (Exam Topic 2)

Which Cisco platform provides organization-wide automation, security, policy enforcement, any agility across wired and wireless networks?

- A. Cisco ACI
- B. Cisco DNA Center
- C. Cisco Umbrella



D. Cisco SD-WAN

**Answer:** B

#### NEW QUESTION 40

- (Exam Topic 2)

What is the function of IP address in networking?

- A. specifies the type of traffic that is allowed to roam on a network
- B. represents the unique ID that is assigned to one host on a network
- C. specifies resource's location and the mechanism to retrieve it
- D. represents a network connection on specific devices

**Answer:** B

#### NEW QUESTION 42

- (Exam Topic 2)

In the test-driven development model, what is changed after a test fails?

- A. test
- B. schedule
- C. project requirements
- D. code

**Answer:** D

#### Explanation:

Reference:

<https://www.guru99.com/test-driven-development.html#:~:text=In%20simple%20terms%2C%20test%20cases,c>

#### NEW QUESTION 47

- (Exam Topic 2)

A new application is being developed that must be hardware independent. The application includes an administrative component which is accessed using a Windows desktop GUI. Installation and management of the environment must be fully automated. Which application deployment type meets the requirements?

- A. bare metal
- B. virtual Python environment
- C. container
- D. virtual machine

**Answer:** C

#### NEW QUESTION 50

- (Exam Topic 2)

A developer creates a script that configured multiple Cisco IOS XE devices in a corporate infrastructure. The internal test environment is unavailable, and no maintenance window is available to test on a low-priority production environment. Which resource is used to test the code before it is applied to the production environment?

- A. Code Exchange
- B. Cisco DevNet Learning Labs
- C. Cisco DevNet Sandbox
- D. Cisco Support

**Answer:** C

#### Explanation:

Reference: <https://developer.cisco.com/site/sandbox/>

#### NEW QUESTION 55

- (Exam Topic 2)

Which platform is used to programmatically create a space and invite users for collaboration?

- A. Cisco Intersight
- B. Cisco Finesse
- C. Cisco Webex
- D. Cisco UCM

**Answer:** C

#### NEW QUESTION 58

- (Exam Topic 2)

Which HTTP code group is issued when a request is received successfully, understood, and processed?

- A. 2xx
- B. 3xx
- C. 4xx

D. 5xx

**Answer:** A

**Explanation:**

[https://www.w3.org/Protocols/rfc2616/rfc2616-sec10.html#:~:text=10.2%20Successful%20xx,received%2C%](https://www.w3.org/Protocols/rfc2616/rfc2616-sec10.html#:~:text=10.2%20Successful%20xx,received%2C%20)

#### NEW QUESTION 60

- (Exam Topic 2)

Refer to the exhibit.

##### Local File Attachments

To send local file attachments, simply post a message by including your access token in the Authorization header and the path to your local file with the files parameter. Optionally, you can also include a plain-text message with the attachment by using the text parameter. When uploading files directly from your local filesystem, your request will need to be a multipart/form-data request rather than JSON

```
curl --request POST \  
  --form "files=@/home/desktop/example.png;type=image/png" \  
  --form "roomId=Y21zY2....." \  
  --form "text=example attached" \  
https://webexapis.com/v1/messages
```

A developer needs to upload a local file by using the REST API. The developer gathers information according to the documentation and sends the request by using the cURL command in the exhibit but gets an error code. Which action should be followed to get valid response?

- A. change content type as JSON
- B. add the authorization header with the access token
- C. add a username-password combination to request command
- D. change request method as GET

**Answer:** B

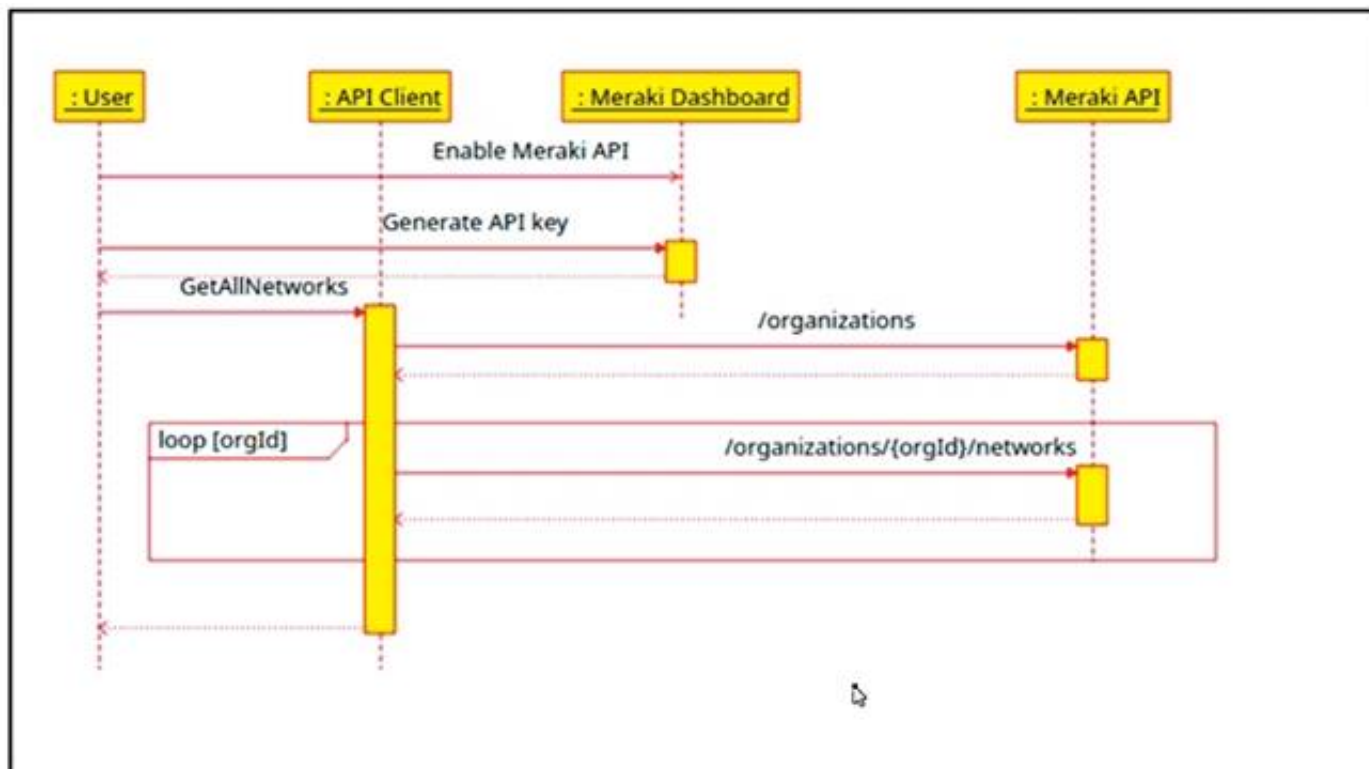
**Explanation:**

Reference: <https://developer.webex.com/docs/api/basics>

#### NEW QUESTION 64

- (Exam Topic 2)

Refer to the exhibit.



The Cisco Meraki API manages two organizations. In each organization, two independent networks are defined. How many calls to the /organizations/{orgId}/networks endpoint will be run parallel by the GetAllNetwork function of the API client?

- A. 1
- B. 2
- C. 4

**Answer:** C

#### NEW QUESTION 65

- (Exam Topic 2)

How are load balancers used in modern application deployment?

- A. Allow traffic to continue as new compute units are brought up and old compute units are taken down.
- B. Allow http and https traffic to continue as old compute units are discontinued before new units are brought up.
- C. Turn off traffic and take down compute units, then update and bring the compute units back up.
- D. Bring up new compute units, test the compute units, and switch the traffic from old units to new units.

**Answer: D**

#### NEW QUESTION 69

- (Exam Topic 2)

Refer to the exhibit.

```
$ sh script.sh
Traceback (most recent call last):
  File "script.py", line 2, in <module>
    api = WebexTeamsAPI()
  File "/opt/.venv/pyvenv35/lib/python3.5/site-packages/webexteamssdk/api/__init__.py", line 112,
in __init__
    "You must provide a Webex Teams access token to interact with "
webexteamssdk.exceptions.AccessTokenError: You must provide a Webex Teams access token to interact
with the Webex Teams APIs, either via a WEBEX_TEAMS_ACCESS_TOKEN environment variable or via the
access_token argument.
$
$
$ cat script.sh
#!/bin/bash

python script.py
$
```

Which line must be included in the Bash script for the Python code to succeed?

- A. define WEBEX\_TEAMS\_ACCESS\_TOKEN=your\_access\_token\_here
- B. export WEBEX\_TEAMS\_ACCESS\_TOKEN=your\_access\_token\_here
- C. set WEBEX\_TEAMS\_ACCESS\_TOKEN=your\_access\_token\_here
- D. WEBEX\_TEAMS\_ACCESS\_TOKEN=your\_access\_token\_here

**Answer: B**

#### NEW QUESTION 73

- (Exam Topic 2)

```
1  import requests
2
3  headers = {"X-Cisco-Meraki-API-Key": "KEY1234"}
4  BASE_URL = "https://api-mp.meraki.com/api/v1"
5  FIRST_URL = "/organizations"
6  SECOND_URL = "/networks"
7  THIRD_URL = "clients"
8
9  def first_loop(info):
10     for item in info:
11         if item["name"] == "ACME":
12             URL = BASE_URL + FIRST_URL + "/" + item["id"] + "/" + SECOND_URL
13             response = requests.request("GET", URL, headers=headers)
14             return second_loop(response.json())
15
16  def second_loop(info):
17     for item in info:
18         if item["name"] == "BLDG21":
19             URL = BASE_URL + SECOND_URL + "/" + item["id"] + "/" + THIRD_URL
20             response = requests.request("GET", URL, headers=headers)
21             return third_loop(response.json())
22
23  def third_loop(info):
24     for item in info:
25         return item
26
27  response = requests.request("GET", BASE_URL + FIRST_URL, headers=headers)
28  info = first_loop(response.json())
29  for item in info:
30     print (item["id"])
```

Refer to the exhibit. A network engineer must collect information from the network. The engineer prepares a script to automate workflow by using Cisco Meraki API. The script must run over nested loops to collect organization and network information and uses the collected data for final collection. Which process is being automated by using the Python script?

- A. Gather the IDs of the ACME organization, the BLDG21 network, and the dents on the network
- B. Provide the BLDG21 network information if it is part of the ACME organization
- C. Collect the IDs of the clients on the BLDG21 network
- D. List the IDs from the ACME organization

**Answer: A**

#### NEW QUESTION 78

- (Exam Topic 2)

Which tool allows changes to the configuration management toolset to be tested?

- A. Cisco VIRL
- B. NAPALM
- C. Ansible
- D. pyATS

**Answer:** D

#### NEW QUESTION 83

- (Exam Topic 2)

Refer to the exhibit.

```
<rpc message-id="101" xmlns="urn:ietf:params:xml:ns:Netconf:base:1.0">
  <get-conflg>
    <source>
      <running/>
    </source>
    <filter>
      <interfaces xmlns=" urn:ietf:params:xml:ns:yang:ietf-interfaces">
        <interface>
          <name/>
        </interface>
      </interfaces>
    </filter>
  </get-conflg>
</rpc>
```

A network engineer uses model-driven programmability to monitor and perform changes on the network. The network engineer decides to use the NETCONF RPC message to complete one of their tasks. What is accomplished by sending the RPC message?

- A. The running-config of the device is returned.
- B. The name of each interface is reset to a default name.
- C. All the YANG capabilities supported by the device are returned.
- D. A list of interface names is returned.

**Answer:** D

#### NEW QUESTION 87

- (Exam Topic 2)

Which protocol must be allowed on the firewall so that NTP services work properly?

- A. ICMP
- B. BGP
- C. UDP
- D. TCP

**Answer:** C

#### Explanation:

Reference:

<https://www.cisco.com/c/en/us/support/docs/ip/network-time-protocol-ntp/108076-ntp-troubleshoot.html>

#### NEW QUESTION 92

- (Exam Topic 2)

What does a load balancer distribute in a network environment?

- A. outgoing connections to the network
- B. incoming traffic across multiple servers
- C. different TCP connections to the routers
- D. traffic in the network by leveraging the switch architecture

**Answer:** B

#### NEW QUESTION 97

- (Exam Topic 2)

A developer created a new secure API and is testing the functionality locally. The API was added to a container for further testing, and other team members and applications need to connect to the API. Which command exposes the API in the container as port 8443 and allows connections external to the host?

- A. docker run -p 127.0.0.1:80:8443/tcp myapiservice
- B. docker run -p 0.0.0.0:443:8443/tcp myapiservice
- C. docker run -p 0.0.0.0:8443:443/tcp myapiservice
- D. docker run -p 127.0.0.1:443:8443/tcp myapiservice

**Answer:** C



#### NEW QUESTION 102

- (Exam Topic 2)

Which HTTP response code should be returned when the request is completed, but there is no content to send for the request?

A. A.-100B.204C.302D.402

**Answer:** B

#### Explanation:

Reference: [https://developer.mozilla.org/en-US/docs/Web/HTTP/Status#successful\\_responses](https://developer.mozilla.org/en-US/docs/Web/HTTP/Status#successful_responses)

#### NEW QUESTION 104

- (Exam Topic 1)

What should a CI/CD pipeline aim to achieve?

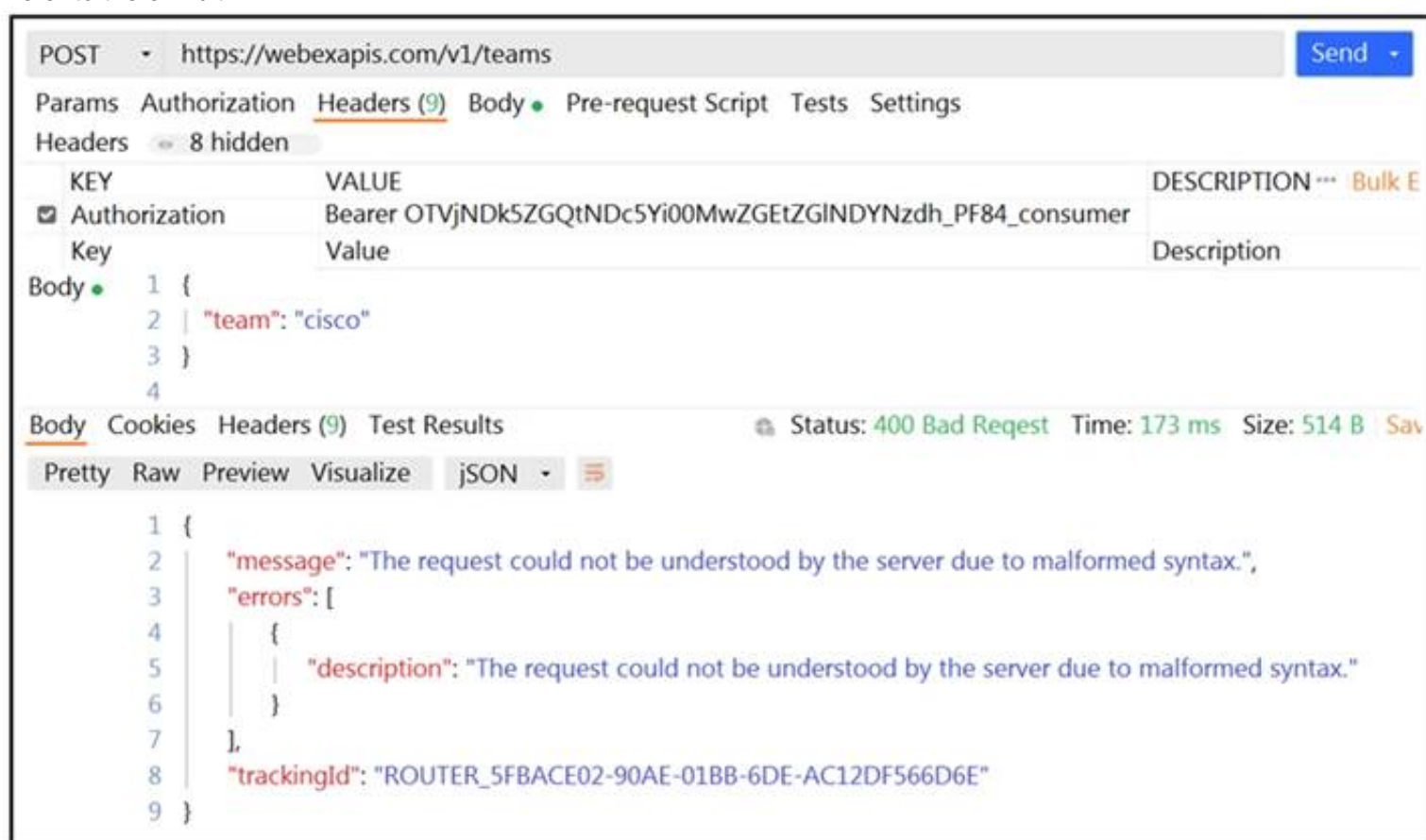
- A. to allow manual testing before deployment
- B. to require minimal manual interaction
- C. to support new deployments on a fixed monthly schedule
- D. to provide a documented process for feedback

**Answer:** A

#### NEW QUESTION 108

- (Exam Topic 2)

Refer to the exhibit.



A developer wants to create a room named cisco through Webex API. The developer prepares the request by putting an API token inside the authorization header; however, the given HTTP call returns error code 400. How must the call parameters be changed to ensure a valid response?

- A. Replace the team body parameter with the name body parameter.
- B. Replace cisco with a valid name for a team.
- C. Change the token in the header with the authorization token.
- D. Change the HTTP method of the call to PUT.

**Answer:** A

#### NEW QUESTION 112

- (Exam Topic 1)

Which two statements describe the traits of an asynchronous API call? (Choose two.)

- A. The order in which API calls return can be guaranteed
- B. A call to an API does not block the code, but rather it allows application processing to continue
- C. The end user can experience latency or performance lag while waiting for the API call to return
- D. Code execution blocks or waits for the call to an API to return.
- E. A callback function typically is used to process the response from an API call

**Answer:** BE

#### NEW QUESTION 115

- (Exam Topic 1)

What are two benefit of managing network configuration via APIs? (Choose two.)

- A. configuration on devices becomes less complex



- B. more security due to locking out manual device configuration
- C. increased scalability and consistency of network changes
- D. eliminates the need of legacy management protocols like SNMP
- E. reduction in network changes performed manually

**Answer:** CE

#### NEW QUESTION 120

- (Exam Topic 1)

Refer to the exhibit.

```
1  ---
2  - hosts: {{ router }}
3    gather_facts: true
4    connection: local
5
6  tasks:
7    - ios_command
8      commands:
9        - show run
10       provider: "{{ router_credentials }}"
11       register: config
12
13   - copy:
14     content: "{{ config.stdout[0] }}"
15     dest: "etc/ansible/configs/command_{{ router_hostname }}.txt
16   ...
```

What is the effect of this Ansible playbook on an IOS router?

- A. A new running configuration is pushed to the IOS router.
- B. The current running configuration of the IOS router is backed up.
- C. The start-up configuration of the IOS router is copied to a local folder.
- D. A new start-up configuration is copied to the IOS router.

**Answer:** B

#### NEW QUESTION 121

- (Exam Topic 1)

Which action does the Git command git merge allow the development to perform?

- A. Combine multiple sequence of commits into one unified history.
- B. Push changes to the remote repository
- C. Switch between branches
- D. Create, list, rename, and delete branches

**Answer:** A

#### Explanation:

Reference: <https://www.atlassian.com/git/tutorials/using-branches/git-merge>

#### NEW QUESTION 124

- (Exam Topic 1)

In which situation would an edge computing solution be used?

- A. where low latency is needed
- B. where high CPU throughput is needed
- C. where fast memory is needed
- D. where high disk space is needed

**Answer:** A

#### NEW QUESTION 129

- (Exam Topic 1)

When using the Bash shell, how is the output of the devnet command saved to a file named "output.txt"?

- A. devnet & output.txt
- B. devnet > output.txt
- C. devnet < output.txt
- D. devnet | output.txt

**Answer:** B

#### Explanation:

Reference: <https://askubuntu.com/questions/420981/how-do-i-save-terminal-output-to-a-file>

#### NEW QUESTION 133

- (Exam Topic 1)

Refer to the exhibit.

List the clients that have used this network in the timespan

#### HTTP REQUEST

GET /networks/ {networkId}/clients

#### PARAMETERS

t0

The beginning of the timespan for the data. The maximum lookback period is 31 days from today.

timespan

The timespan for which the information will be fetched. If specifying timespan, do not specify parameter t0. The value must be in seconds and be less than or equal to 31 days. The default is 1 day.

perPage

The number of entries per page returned. Acceptable range is 3 – 1000. Default is 10.

startingAfter

A token used by the server to indicate the start of the page. Often this is a timestamp or an ID but it is not limited to those. This parameter should not be defined by client applications. The link for the first, last, prev, or next page in the HTTP Link header should define it.

endingBefore

A token used by the server to indicate the end of the page. Often this is a timestamp or an ID but it is not limited to those. This parameter should not be defined by client applications. The link for the first, last, prev, or next page in the HTTP Link header should define it.

```
base_url = "https://api.meraki.com/api/v0"
network_id = "L_12345678910"
api_key = "1098hadpfsiapsf8ahf8ohp"
requests.<item 1> (
    <item 2> + "<item 3>/" + <item 4>, "<item 5>",
    headers = {
        "X-Cisco-Meraki-API-Key": <item 6> ,
        "Content-Type": "<item 7>"
    },
    <item 8>={"<item 9>":<item 10>})
```

Drag and drop the code from the left code from the left onto the item number on the right to complete the Meraki code to obtain a list of client which have used this network.

params	<item 1>
networks	<item 2>
timespan	<item 3>
get	<item 4>
432000	<item 5>
base_url	<item 6>
application/json	<item 7>
network_id	<item 8>
clients	<item 9>
api_key	<item 10>

- A. Mastered
- B. Not Mastered

Answer: A

Explanation:

1 - d, 2 - f, 3 - b, 4 - h, 5 - i, 6 – j, 7 - g, 8 - a, 9 - c, 10 - e

NEW QUESTION 138

- (Exam Topic 1)

Before which process is code review performed when version control is used?

- A. committing code
- B. branching code
- C. merge of code
- D. checkout of code

Answer: C

NEW QUESTION 142

- (Exam Topic 1)

A developer is writing an application that a REST API and the application requires a valid from the API which element of the response is used in the conditional check?

- A. URL
- B. Status code
- C. Link
- D. Body
- E. Headers

Answer: B

NEW QUESTION 143

- (Exam Topic 1)

Refer to the exhibit.

```
docker run -p 3000:5000 f877cbf2ff33
```

A process on the host wants to access the service running inside this Docker container. Which port is used to make a connection?

- A. only outbound connections between 3000 and 5000 are possible
- B. port 3000
- C. any port between 3000 and 5000
- D. port 5000

Answer: B



#### NEW QUESTION 144

- (Exam Topic 1)

Refer to the exhibit.

```
def process_devices(dnac, token):  
    url = "https://{}/api/v1/network-device".format(dnac['host'])  
    headers["x-auth-token"] = token  
    response = requests.get(url, headers=headers, verify=False)  
    data = response.json()  
    for item in data['response']:  
        print(item["hostname"], " ", item["managementIpAddress"])
```

What is the function of the python script?

- A. Count and print the total number of available devices.
- B. Iterate over a list of network devices and write all device names and management IP addresses to an output file.
- C. Iterate over a list of network devices and write all device type and associated management IP address.
- D. For each device that is returned, display the device and, for each device, print the device name and management IP address.
- E. Loop through the returned list of network devices and, for each device, print the device name management IP address.

**Answer:** E

#### NEW QUESTION 145

- (Exam Topic 1)

How does requesting a synchronous API operation differ from requesting an asynchronous API operation?

- A. clients poll for the status of the execution of operations
- B. clients subscribe to a webhook for operation results
- C. clients can access the results immediately
- D. clients receive responses with a task id for further processing

**Answer:** C

#### NEW QUESTION 150

- (Exam Topic 1)

What is an example of a network interface hardware address?

- A. domain name
- B. IP address
- C. workstation name
- D. MAC address

**Answer:** D

#### NEW QUESTION 154

- (Exam Topic 1)

Drag and Drop the GIT commands from the left onto the right that add modified local files to a remote repository. Not all options are used

git push	Git command one
git add .	Git command two
git checkout -b "new branch"	Git command three
git commit -m "this is my edit"	
git pull	

- A. Mastered
- B. Not Mastered

**Answer:** A

**Explanation:**

git add .  
git commit -m "this is my edit" git push

#### NEW QUESTION 156

- (Exam Topic 1)

What is the purpose of a MAC address?

- A. To uniquely identify a router in a LAN
- B. To uniquely identify a network interface in a LAN
- C. To uniquely identify a device on the internet
- D. To uniquely identify a switch in a LAN

**Answer:** B

#### NEW QUESTION 159

- (Exam Topic 1)

Refer to the exhibit.

```
#!/bin/bash
read ndir
while [ -d "$ndir" ]
do
  cd $ndir
done
mkdir $ndir
```

What is the action of the Bash script that is shown?

- A. The script waits until input is entered
- B. If the directory exists, the script goes into it until there is no directory with the same name, then it creates a new directory.
- C. The script goes into the directory called "\$ndir" and makes a new directory called "\$ndir"
- D. The script waits until input is entered, then it goes into the directory entered and creates a new directory with the same name.
- E. For all directories in the current folder
- F. The script goes into directory and makes a new directory.

**Answer:** A

#### NEW QUESTION 164

- (Exam Topic 1)

Which device is used to transport traffic from one broadcast domain to another broadcast domain?

- A. load balancer
- B. layer 2 switch
- C. router
- D. proxy server

**Answer:** C

#### NEW QUESTION 167

- (Exam Topic 1)

The project is migrated to a new codebase, the "old\_project" directory must be deleted. The directory has multiple read-only files, and it must be deleted recursively without prompting for confirmation. Which bash command must be used?

- A. `rm -rf old_project`
- B. `rm -r old_project`
- C. `rmdir -p old_project`
- D. `rmdir old_project`

**Answer:** A

#### NEW QUESTION 169

- (Exam Topic 1)

What operation is performed with YANG model-driven programmability in NX-OS?

- A. configure a device with native and OpenConfig-based models
- B. send CLI commands to a device and retrieve output in JSON format
- C. run Linux commands natively on the device
- D. bootstrap a device that has a factory-default configuration

**Answer:** A

#### Explanation:

Reference:

<https://www.cisco.com/c/en/us/products/collateral/switches/nexus-9000-series-switches/white-paper-c11-74151>

#### NEW QUESTION 172

- (Exam Topic 1)

Which model-driven programmability protocol does Cisco IOS XE Software support?

- A. CORBA



- B. SSH
- C. gNMI
- D. SOAP

**Answer:** C

**Explanation:**

Reference:

[https://www.cisco.com/c/en/us/td/docs/ios-xml/ios/prog/configuration/1610/b\\_1610\\_programmability\\_cg/gnmi\\_](https://www.cisco.com/c/en/us/td/docs/ios-xml/ios/prog/configuration/1610/b_1610_programmability_cg/gnmi_)

**NEW QUESTION 177**

- (Exam Topic 1)

Drag and drop the network automation interfaces from the left onto the transport protocols that they support on the right. Not all options are used.

SSH

HTTP

HTTP/2

HTTPS

gRPC

NETCONF

RESTCONF

- A. Mastered
- B. Not Mastered

**Answer:** A

**Explanation:**

SSH

HTTP

HTTP/2

HTTPS

gRPC

HTTP/2

NETCONF

SSH

RESTCONF

HTTPS

**NEW QUESTION 179**

- (Exam Topic 1)

Which network device monitors incoming and outgoing traffic and decides whether to allow or block specific traffic based on a defined set of rules?

- A. switch
- B. load balancer
- C. reverse proxy
- D. firewall

**Answer:** D

**NEW QUESTION 183**

- (Exam Topic 1)

What are two advantages of YANG-based approaches for infrastructure automation? (Choose two.)

- A. directly maps to JavaScript
- B. multi-platform vendor abstraction
- C. designed to reflect networking concepts
- D. compiles to executables that run on network devices
- E. command line driven interface

**Answer:** BC

**NEW QUESTION 184**

- (Exam Topic 1)

Which status code is used by a REST API to indicate that the submitted payload is incorrect?

A. A.-400B.403C.405D.429

**Answer:** A

**Explanation:**

Reference:

<https://community.cisco.com/t5/application-centric/apic-rest-api-produces-inconsistent-response/td-p/2758230>

**NEW QUESTION 188**

- (Exam Topic 1)

Refer to the exhibit.

List Rooms

List rooms.

The `title` of the room for 1:1 rooms will be the display name of the other person.

By default, lists rooms to which the authenticated user belongs.

Long result sets will be split into `pages`.

GET

/v1/rooms

Query Parameters

Name	Description
<code>teamId</code> string	List rooms associated with a team, by ID.
<code>type</code> string	List rooms by tape. <i>Possible values: direct, group</i>
<code>sortBy</code> string	Sort results. <i>Possible values: id, lastactivity, created</i>
<code>max</code> number	Limit the maximum number of rooms in the response.  Default: <code>100</code>

Fill in the blank to complete the query parameter and value so that the result set is returned in reverse chronological order (most recent first) based on when message were entered.

HTTP GET /v1/rooms \_\_\_\_\_

- A. Mastered
- B. Not Mastered

**Answer:** A

**Explanation:**

HTTP GET /v1/rooms `?sortBy=lastactivity`

**NEW QUESTION 189**

- (Exam Topic 1)

Which two elements are foundational principles of DevOps? (Choose two.)

- A. designing applications as microservices
- B. encouraging containers for the deployment of applications
- C. organizing cross-functional teams over organizational silos
- D. optimizing the cost of infrastructures
- E. automating over documenting

**Answer:** CE

**NEW QUESTION 192**

- (Exam Topic 1)

An application calls a REST API and expects a result set of more than 550 records, but each time the call is made, only 25 are returned. Which feature limits the amount of data that is returned by the API?

- A. pagination
- B. payload limit
- C. rate limiting
- D. service timeouts

Answer: A

NEW QUESTION 196

- (Exam Topic 1)

Drag and drop the requests from the left into the correct order on the right to create and check the path trace between two devices using Cisco DNA center API.

GET /api/v1/flow-analysis/{flowAnalysisId}	Step 1
POST /api/v1/flow-analysis	Step 2
POST /api/system/v1/auth/token	Step 3
GET /api/v1/network-device/ and choose IP of source and destination devices	Step 4

- A. Mastered
- B. Not Mastered

Answer: A

Explanation:

1 – C, 2 – D, 3 – B, 4 - A

NEW QUESTION 199

- (Exam Topic 1)

What are the two purposes for using a VLAN in a network? (Choose two)

- A. It is used to create the routing table.
- B. It creates a collection of MAC addresses.
- C. It is used for VM network traffic.
- D. It segments a network.
- E. It creates a broadcast domain.

Answer: DE

NEW QUESTION 200

- (Exam Topic 1)

Drag and drop elements of the RESTCONF protocol stack from the left onto the correct description on the right. Not all elements on the left are used.

<data>	content
XML or JSON	operations
SSH	transport
<rpc>, <rpc-reply>	
GET, POST, PUT, PATCH, DELETE	
HTTPS	

- A. Mastered
- B. Not Mastered

Answer: A

Explanation:

1 – B, 2 – E, 3 - F  
Reference:  
[https://www.cisco.com/c/en/us/td/docs/ios-xml/ios/prog/configuration/169/b\\_169\\_programmability\\_cg/restconf](https://www.cisco.com/c/en/us/td/docs/ios-xml/ios/prog/configuration/169/b_169_programmability_cg/restconf)

**NEW QUESTION 202**

- (Exam Topic 1)  
Drag and drop the HTTP status codes from the left onto the correct descriptions on the right.

400	Unauthorized
401	Not Found
403	Bad Request
404	Forbidden

- A. Mastered
- B. Not Mastered

**Answer:** A

**Explanation:**  
1 – B, 2 – D, 3 – A, 4 – C  
Reference:  
<https://www.cisco.com/c/en/us/support/docs/security/web-security-appliance/118217-troubleshoot-wsa-00.html>

**NEW QUESTION 207**

- (Exam Topic 1)  
On which network plane is routing protocol traffic handled?

- A. data plane
- B. management plane
- C. authentication plane
- D. control plane

**Answer:** D

**Explanation:**  
Reference: [https://tools.cisco.com/security/center/resources/understanding\\_cppr](https://tools.cisco.com/security/center/resources/understanding_cppr)

**NEW QUESTION 209**

- (Exam Topic 1)  
Refer to the exhibit.

```
<books>
  <science>
    <biology>10.00</biology>
    <geology>9.00</geology>
    <chemistry>8.00</chemistry>
  </science>
  <math>
    <calculus>20.00</calculus>
    <algebra>12.00</algebra>
  </math>
</books>
```

Which JSON is equivalent to the XML –encoded data?



```
A. [ {
  "books": {
    "science": {
      "biology": "10.00",
      "geology": "9.00",
      "chemistry": "8.00"
    },
    "math": {
      "calculus": "20.00",
      "algebra": "12.00"
    }
  }
} ]

B. {
  "books": [
    "science": {
      "biology": "10.00",
      "geology": "9.00",
      "chemistry": "8.00"
    },
    "math": {
      "calculus": "20.00",
      "algebra": "12.00"
    }
  ]
}

C. {
  "books": [
    "science": {
      "biology": "10.00",
      "geology": "9.00",
      "chemistry": "8.00"
    },
    "math": {
      "calculus": "20.00",
      "algebra": "12.00"
    }
  ]
}

D. {
  "books": [
    "science", {
      "biology": "10.00",
      "geology": "9.00",
      "chemistry": "8.00"
    },
    "math", {
      "calculus": "20.00",
      "algebra": "12.00"
    }
  ]
}
```

- A. Option A
- B. Option B
- C. Option C
- D. Option D

**Answer: A**

**NEW QUESTION 214**



- (Exam Topic 1)  
Drag and drop the descriptions from the left onto correct application deployment models on the right.

provides a low-latency compute capability close to the data source

environment where you pay only for the resources that you consume

offers a self-service, elastic compute environment from a dedicated set of physical resources

provides an approach for overflow traffic to burst out to meet peak demands

shared compute platform that is offered over the Internet

Public Cloud

Private Cloud

Hybrid Cloud

Edge Computing

- A. Mastered
- B. Not Mastered

Answer: A

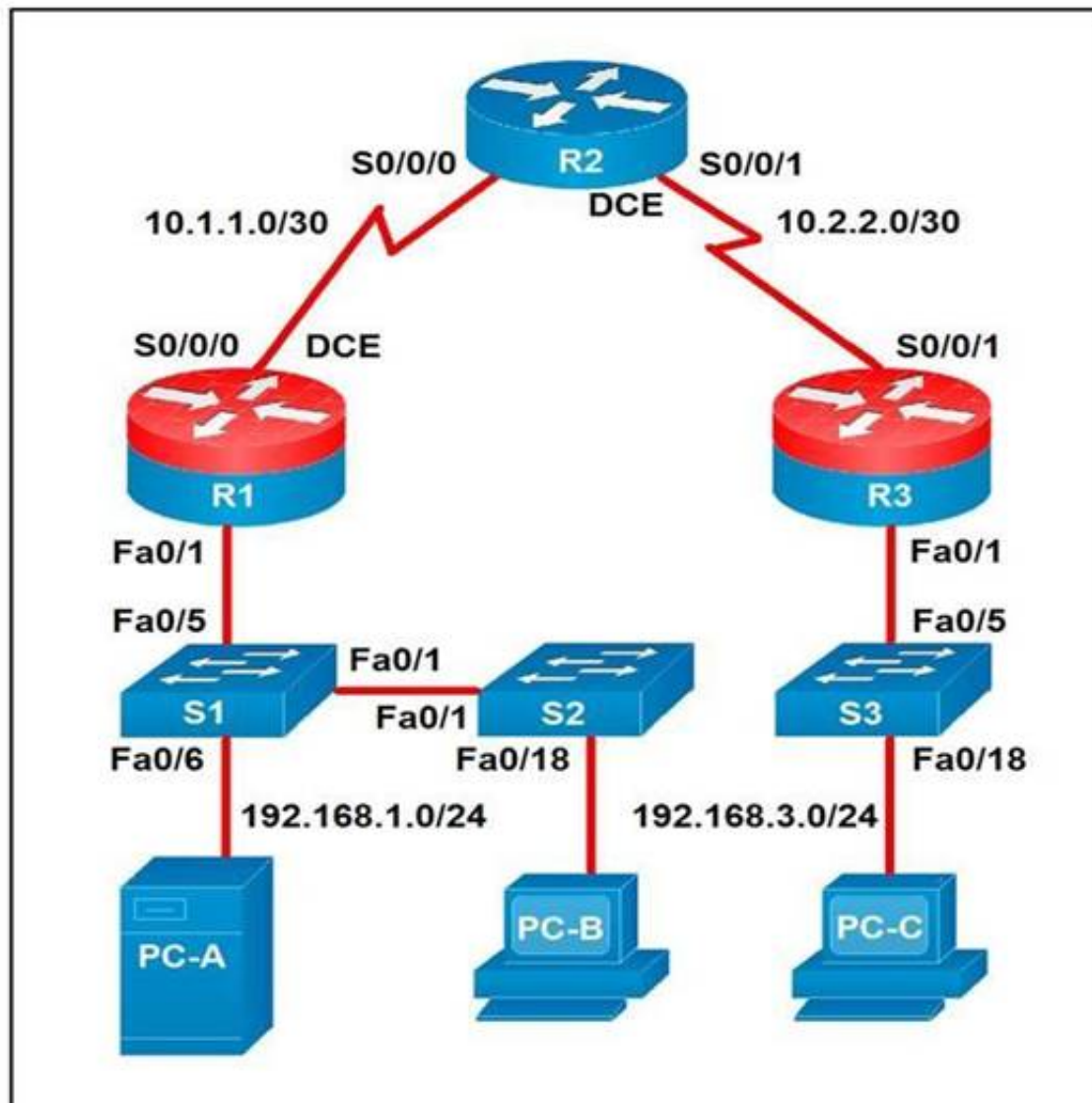
Explanation:  
1 – B, 2 – E, 3 – C, 4 – D, 5 – A

NEW QUESTION 219  
- (Exam Topic 1)  
Which platform is run directly using a hypervisor?

- A. bare metal systems
- B. containers
- C. virtual machines
- D. applications

Answer: C

NEW QUESTION 223  
- (Exam Topic 1)  
Refer to the exhibit.



Which two statements about the network diagram are true? (Choose two.)

- A. PC-A and PC-B are in the same subnet.
- B. One of the routers has two connected serial interfaces.
- C. The subnet of PC-C can contain 256 hosts.
- D. R1 and R3 are in the same subnet.
- E. The subnet address of PC-B has 18 bits dedicated to the network portion.

**Answer:** BC

#### NEW QUESTION 228

- (Exam Topic 1)

Refer to the exhibit.

```

bash-3.2$ curl -H "Content-Type: application/json" -H "Authorization: Bearer
A - Fj2zzykEa09lic9GK2j8LtE1HklH6oRHPQdw1Pat60i7ndtHHnWzL2b5PQmG14Kk_B9ei5ISAClY7-
NarA-2n9H-tGgt-SxQ39iDejgcs" -i -d "{ \"roomId\":
B - \"Y2geK53sjELknosrC7SwQ5ZGL99pHgiuScB7DfNvU8r8Xx4wDKLiPORcEkryAnM3QmK9LQZsPOG4\"
, \"text\": \"test2\" }" -X POST https://api.ciscopark.com/v1/messages C
D - HTTP/1.1 200 OK
Via: 1.1 linkerD
Transfer-Encoding: chunked
TrackingID: ROUTER_5E0FE283-63EB-01BB-00ED-806BF1BD00ED
E - Date: Sat, 01 Jan 2020 00:55:31 GMT
Server: Redacted
Content-Type: application/json; charset=UTF-8
Vary: Accept-Encoding
Strict-Transport-Security: max-age=63072000; includedSybDomains; preload

F - {\"id\": \"
YCPJf3aVovyBYcbn7lSdesNkKcgN5tlExdc6dcnPtl4Va05NfCh9MG17j0tWXQLoIPuoJ73uu7JdoX
q9 \", \"roomId\": \"
Y2geK53sjELknosrC7SwQ5ZGL99pHgiuScB7DfNvU8r8Xx4wDKLiPORcEkryAnM3QmK9LQZsPOG4
\", \"roomType\": \"group\", \"text\": \"test2\", \"personId\": \"
YcgYzL6XgtyfW81XXwqfKf7whfj23KuqWt4kLWkbb3JwEJBlVMZOKlvyDdFoppb0einNj111FcMyy5
wD\", \"personEmail\": \"user@webex.com\", \"created\": \"2020-01-01T00:55:32.492Z\"}
bash-3.2$
    
```

Drag and drop the descriptors from the left onto the correct parts of the API request and response on the right.

Response Headers	A
HTTP Request	B
HTTP Response	C
Request Payload	D
Request Headers	E
Response Payload	F

- A. Mastered
- B. Not Mastered

Answer: A

Explanation:  
A – E, B – D, C – B, D – C, E – A, F – F

NEW QUESTION 230  
- (Exam Topic 1)  
Which platform is run directly using a hypervisor?

- A. Virtual
- B. Bare metal systems
- C. Containers
- D. Applications

Answer: C

NEW QUESTION 235  
- (Exam Topic 1)  
Which mechanism is used to consume a RESTful API design when large amounts of data are returned?

- A. Data sets
- B. Scrolling
- C. Blobs
- D. Pagination

Answer: D

Explanation:  
Reference: <https://nordicapis.com/everything-you-need-to-know-about-api-pagination/>

NEW QUESTION 239  
- (Exam Topic 1)  
What is the first development task in test-driven development?

- A. Write code that implements a desired function.
- B. Write a failing test case for a desired function.
- C. Write a passing test case for existing code.
- D. Reverse engineer the code for a desired function.

Answer: B

Explanation:  
Reference:  
<https://technologyconversations.com/2013/12/20/test-driven-development-tdd-example-walkthrough/>

NEW QUESTION 242  
- (Exam Topic 1)  
Which two use cases are supported by Meraki APIs? (Choose two.)

- A. Retrieve live streams from a Meraki Camera.



- B. Build a custom Captive Portal for Mobile Apps.
- C. Configure network devices via the Dashboard API.
- D. Build location-aware apps from Wi-Fi and LoRaWAN devices.
- E. Deploy applications onto the devices.

**Answer:** BC

#### NEW QUESTION 244

- (Exam Topic 1)

Which two descriptions can be given to an application that is interacting with a webhook? (Choose two.)

- A. Processor
- B. Codec
- C. Listener
- D. Receiver
- E. Transaction monitor

**Answer:** CD

#### NEW QUESTION 246

- (Exam Topic 1)

What are two roles of an artifact repository in a CI/CD pipeline? (Choose two.)

- A. is required for CI/CD pipelines executed on a public cloud infrastructure
- B. is required for managing open source software
- C. stores files needed and generated during the build process
- D. allows for comparing and merging changes in the source code
- E. provides traceability, search, and management of binary files

**Answer:** CE

#### NEW QUESTION 248

- (Exam Topic 1)

Refer to the exhibit.

```
$ pyang -f tree Cisco-IOS-XE-native.yang
module: Cisco-IOS-XE-native
  +--rw native
    +--rw logging
      +--rw monitor|
        +--rw severity?  logging-level-type

$ curl --insecure -v -X PATCH \
  "https://ios-xe-mgmt-latest.cisco.com:9443/restconf/data/Cisco-IOS-XE-native:native" \
  -H 'Authorization: Basic ZGV2ZWxvcGVyOkMxc2NvMTIzNDU=' -H 'Accept: application/yang-data+json' \
  -H 'Content-Type: application/yang-data+json' \
  -d '{ "Cisco-IOS-XE-native:native" : { "logging" : { "monitor" : { "severity" : "alerts" }} } }'
> ...
< ...
< HTTP/1.1 204 No Content
```

The definition of the YANG module and a RESTCONF query sent to a Cisco Ioc XE device is shown. Which statement is correct if the RESTCONF interface responds with a 204 status code?

- A. The query failed at retrieving the logging seventy level.
- B. The query failed to set the logging seventy level due to an invalid path.
- C. The query retrieved the logging seventy level.
- D. The query updated the logging seventy level or created it if not present on the device.

**Answer:** D

#### Explanation:

Reference:

[https://www.cisco.com/c/en/us/td/docs/ios-xml/ios/prog/configuration/1611/b\\_1611\\_programmability\\_cg/restco](https://www.cisco.com/c/en/us/td/docs/ios-xml/ios/prog/configuration/1611/b_1611_programmability_cg/restco)

#### NEW QUESTION 252

- (Exam Topic 1)

How is a branch called "my-bug-fix" started to develop a fix needed in a product?

- A. git branch -b my-bug-fix
- B. git checkout -b my-bug-fix
- C. git checkout my-bug-fix
- D. git branch my-bug-fix

**Answer:** B

### NEW QUESTION 253

- (Exam Topic 1)

Which line is an example of the start of a chunk from a unified diff?

- A. @@ -90,88 +20191008T1349@@
- B. @@ -20191007T1200 +88,90 @@
- C. @@ -20191007T1200 +20191008T1349@@
- D. @@ -88,10 +88,6 @@

Answer: D

### Explanation:

Reference:

<https://unix.stackexchange.com/questions/252927/what-do-the-numbers-in-the-line-mean-in-output-of-diff>

### NEW QUESTION 255

- (Exam Topic 3)

Drag and drop the code from the bottom onto the box where the code is missing to authenticate with the Cisco DNA Center REST API by using basic authentication. Then generate a token for later use. Not all options are used.

```
import requests
from requests.auth import HTTPBasicAuth

BASE_URL = 'https://sandboxdnac2.cisco.com'
AUTH_URL = '/dna/system/api/v1/'
USERNAME = 'admin'
PASSWORD = 'qwer1234!'

response = requests. (BASE_URL + AUTH_URL,
    auth=HTTPBasicAuth( , ))
token = response.json()['Token']
print(token)
```

- |            |             |          |     |
|------------|-------------|----------|-----|
| auth/basic | /auth/token | post     | get |
| USERNAME   | Token       | PASSWORD |     |

- A. Mastered
- B. Not Mastered

Answer: A

### Explanation:

```
import requests
from requests.auth import HTTPBasicAuth

BASE_URL = 'https://sandboxdnac2.cisco.com'
AUTH_URL = '/dna/system/api/v1/'
USERNAME = 'admin'
PASSWORD = 'qwer1234!'

response = requests. (BASE_URL + AUTH_URL,
    auth=HTTPBasicAuth( , ))
token = response.json()['Token']
print(token)
```

- |            |             |          |     |
|------------|-------------|----------|-----|
| auth/basic | /auth/token | post     | get |
| USERNAME   | Token       | PASSWORD |     |



#### NEW QUESTION 257

- (Exam Topic 3)

What is a characteristic of the Cisco Finesse platform?

- A. Applications allow services to be invoked on a network triggered event.
- B. The platform provides a ready-to-go platform for HD video and audio conferencing.
- C. Applications are added to the platform from the desktop remotely.
- D. The platform includes an enterprise-class IM engine.

**Answer:** A

#### Explanation:

A characteristic of the Cisco Finesse platform is that applications allow services to be invoked on a network triggered event. Cisco Finesse is a next-generation agent and supervisor desktop designed to provide a rich, browser-based experience for contact center agents and supervisors. It offers a flexible, open development platform that allows developers to build custom applications and integrations to meet the specific needs of their contact center. One of the key features of Cisco Finesse is the ability to trigger actions based on events within the contact center network, such as an incoming call or a change in the status of a customer's account. This allows developers to build applications that can react to real-time events and provide relevant information or services to agents as they handle customer interactions.

#### NEW QUESTION 258

- (Exam Topic 3)

Which HTTP method is used by webhooks and notifies a listener about an event change?

- A. PUT
- B. POST
- C. PATCH
- D. GET

**Answer:** B

#### NEW QUESTION 262

- (Exam Topic 3)

A developer must test the performance and reliability of an application. After functional and load tests are run, the application crashes due to traffic spikes from users. Which type of API constraint must be implemented to maintain reliability?

- A. rate limiting
- B. pagination
- C. payload limits
- D. filtering

**Answer:** A

#### NEW QUESTION 264

- (Exam Topic 3)

Refer to the exhibit.

```
1  <routing xmlns="urn:ietf:params:xml:ns:yang:ietf-routing">
2    <routing-instance>
3      <name>default</name>
4      <description>default-vrf [read-only]</description>
5      <routing-protocols>
6        <routing-protocol>
7          <type xmlns:ospf="urn:ietf:params:xml:ns:yang:ietf-
*         ospf">ospf:ospfv2</type>
8          <name>100</name>
9          <ospf xmlns="urn:ietf:params:xml:ns:yang:ietf-ospf">
10             <instance>
11               <af xmlns:rt="urn:ietf:params:xml:ns:yang:ietf-
*              routing">rt:ipv4</af>
12               <router-id>1.1.1.1</router-id>
13               <nsr>
14                 <enable>false</enable>
15               </nsr>
16               <auto-cost>
17                 <enable>false</enable>
18               </auto-cost>
19               <redistribution
*              xmlns="urn:ietf:params:xml:ns:yang:cisco-ospf">
20                 <rip/>
21               </redistribution>
22             </instance>
23           </ospf>
24         </routing-protocol>
25       </routing-protocols>
26     </routing-instance>
27   </routing>
```

What are two characteristics of the NETCONF response? (Choose two.)

- A. ospf is defined by the ietf-ospf module.
- B. ietf-ospf imports ietf-routing.
- C. redistribution is a module of type cisco-ospf.
- D. routing protocols is a list.
- E. The main module is routing.

Answer: BC

NEW QUESTION 267

- (Exam Topic 3)

What is a characteristic of RPC APIs compared to REST APIs?

- A. Authentication is done over provisions for the service caller and vice versa for RPC API, and REST API uses HTTP headers for authentication.
- B. All communications between the client and server must be stateless for RPC API, and REST API is stateful.
- C. The architecture model for RPC API is resource-focused, and REST API is procedure-focused.
- D. The data payload must be in JSON format for RPC API, and REST API allows JSON and XML formats.

Answer: A

NEW QUESTION 272

- (Exam Topic 3)

```
user@host1:~/tmp$ cat Dockerfile
# Dockerfile to install traceroute
FROM ubuntu
MAINTAINER User One (userone@cisco.com)
RUN apt-get update && apt-get install traceroute
```

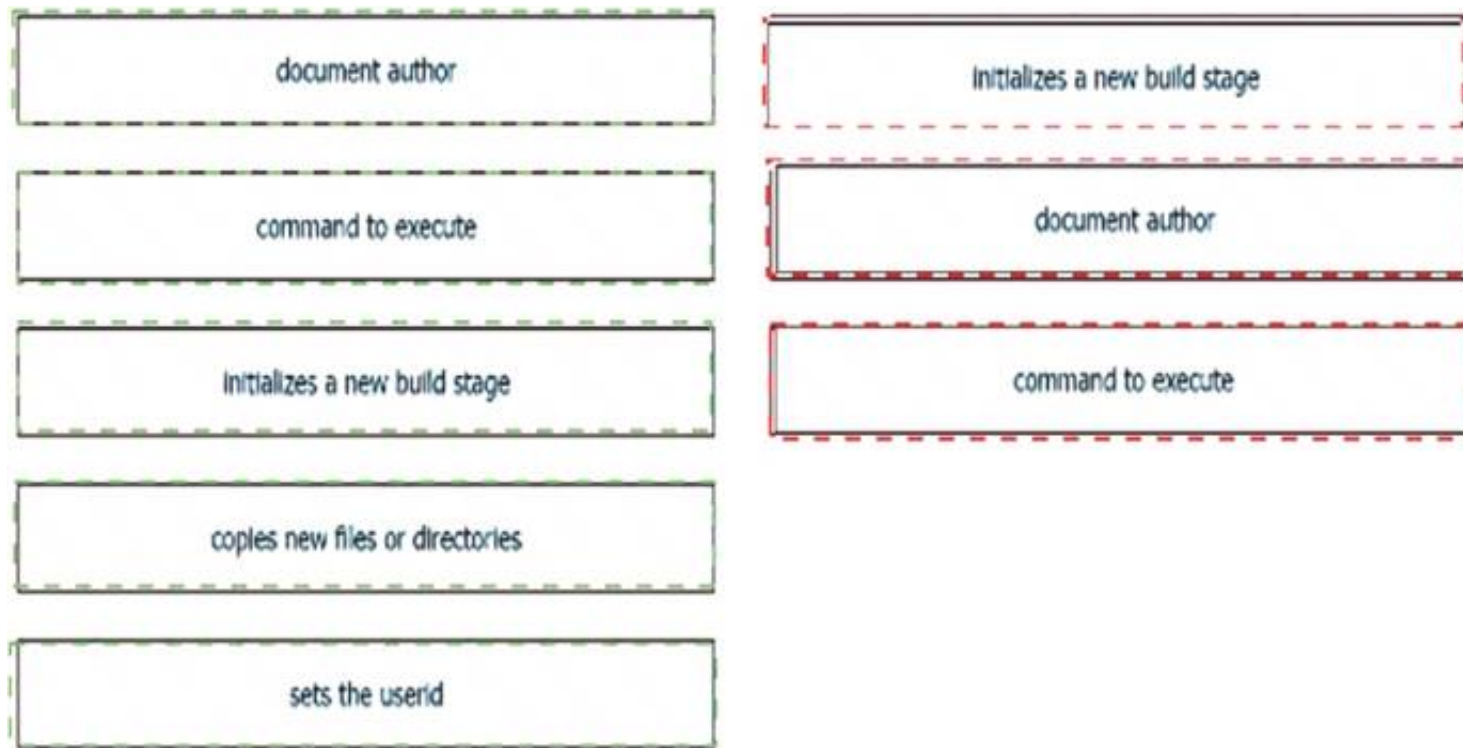
Refer to the exhibit. Drag and drop the Dockerfile contents from the left onto the functions on the right that create a container image to run traceroute to track network path to specific targets. Not all options are used.

document author	FROM ubuntu
command to execute	MAINTAINER User One (userone@cisco.com)
initializes a new build stage	RUN apt-get update && apt-get install traceroute
copies new files or directories	
sets the userid	

- A. Mastered
- B. Not Mastered

Answer: A

Explanation:



#### NEW QUESTION 274

- (Exam Topic 3)

What is a capability of the AXL API?

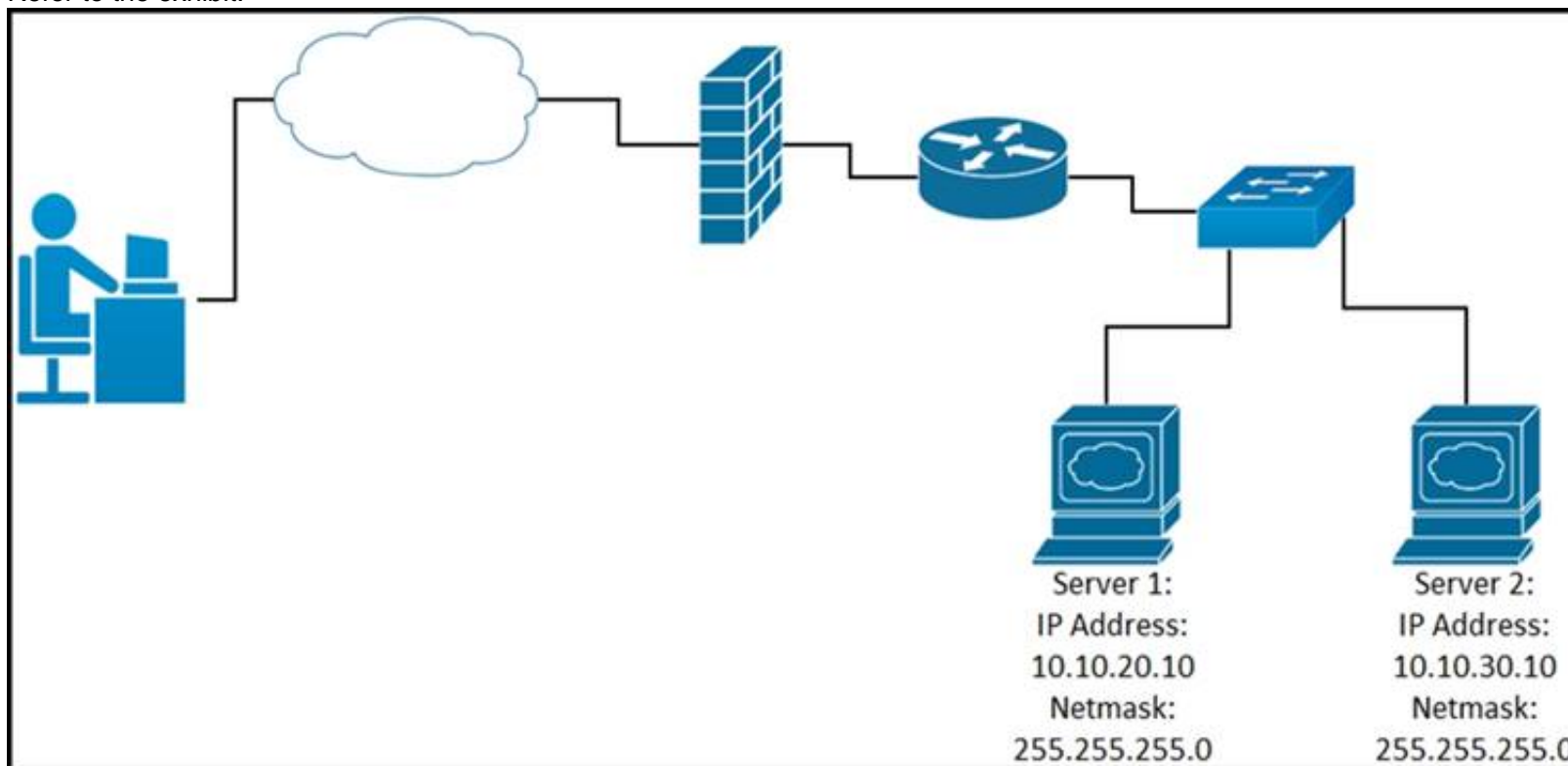
- A. It signs a user in to a phone that is configured for extension mobility.
- B. It pulls logs for the Cisco Tomcat service.
- C. It authenticates users who exist in Cisco Unified Communications Manager.
- D. It provides support for HTTP and HTTPS communications.

**Answer: C**

#### NEW QUESTION 279

- (Exam Topic 3)

Refer to the exhibit.



While developing a Cisco Webex bot, an application reaches the public IP address of the firewall, but traffic is forwarded to the IP address of server 1 instead of the IP address of server 2. What causes this issue?

- A. The proxy server that rewrites traffic is misconfigured.
- B. The router is sending the traffic to server 1 instead of server 2.
- C. The switch is forwarding IP traffic to the wrong VLAN.
- D. NAT is misconfigured on the firewall.

**Answer: D**

#### NEW QUESTION 281

- (Exam Topic 3)

A developer has experienced security issues with a previously developed application. The API offered by that application is open and without any constraints. During a recent attack, the application was overloaded with API requests. To address this issue, an API constraint is implemented to protect the application from future attacks or any sudden throttling. Which API constraint must the application developer implement in this situation?

- A. pagination
- B. rate limiting
- C. filtering



D. payload limiting

**Answer:** B

#### NEW QUESTION 283

- (Exam Topic 3)

Drag and drop the capabilities from the left onto the Cisco Network Management Platforms that support the capabilities on the right.

receives AI/ML network performance insights, and uses guided issue remediation	Meraki
achieves automation through common policy for data center operations	Cisco DNA Center
establishes an overlay fabric to connect data centers, branches, and campuses through vManage	ACI
provisions and manages networks, networking devices, and clients through a fully managed cloud service	Cisco SD-WAN
supports multivendor networks through Network Element Drivers	NSO

A. Mastered

B. Not Mastered

**Answer:** A

**Explanation:**

receives AI/ML network performance insights, and uses guided issue remediation	provisions and manages networks, networking devices, and clients through a fully managed cloud service
achieves automation through common policy for data center operations	receives AI/ML network performance insights, and uses guided issue remediation
establishes an overlay fabric to connect data centers, branches, and campuses through vManage	achieves automation through common policy for data center operations
provisions and manages networks, networking devices, and clients through a fully managed cloud service	establishes an overlay fabric to connect data centers, branches, and campuses through vManage
supports multivendor networks through Network Element Drivers	supports multivendor networks through Network Element Drivers

#### NEW QUESTION 286

- (Exam Topic 3)

A team of developers is responsible for a network orchestration application in the company. The responsibilities also include: developing and improving the application in a continuous manner deployment of the application and management of CI/CD frameworks monitoring the usage and problems and managing the performance improvements Which principle best describes this DevOps practice?

A. responsible for IT operations

B. automation of processes

C. end-to-end responsibility

D. quality assurance checks

**Answer:** C

#### NEW QUESTION 289

- (Exam Topic 3)

Drag and drop the API characteristics from the left onto the categories on the right.



The API is seen as a function call.	REST
There is communication between server and client.	
It follows a resource-oriented model.	RPC
The API can be stateless.	

- A. Mastered  
 B. Not Mastered

**Answer:** A

**Explanation:**

Graphical user interface, application Description automatically generated

**NEW QUESTION 291**

- (Exam Topic 3)

```
$ find /home/user/backup -mtime +30 -type f -print
$ find /home/user/backup -mtime +30 -type f -delete
```

Refer to the exhibit. An engineer is managing the network of an enterprise. The network is using a distributed deployment model. The enterprise uses database to store logs. The current policy requires logs to be stored if changes are made to the infrastructure in any of the devices on the data centers. Which workflow is being automated by the Bash script?

- A. returning backup files that are older than 30 days  
 B. deleting backup files that are older than 30 days  
 C. configuring the directory to delete files automatically  
 D. automating deletion of all backup files every 30 days

**Answer:** B

**NEW QUESTION 296**

- (Exam Topic 3)

Drag and drop the functions from the left onto the networking devices on the right.

forwards by default	load balancer
distributes unicast traffic over devices	switch
uses traffic inspection to make forwarding decisions	firewall
distributes multicast traffic over devices	router

- A. Mastered  
 B. Not Mastered

**Answer:** A

**Explanation:**

forwards by default	forwards by default
distributes unicast traffic over devices	distributes unicast traffic over devices
uses traffic inspection to make forwarding decisions	uses traffic inspection to make forwarding decisions
distributes multicast traffic over devices	distributes multicast traffic over devices

#### NEW QUESTION 297

- (Exam Topic 3)

```
import requests, json
url = https://sandboxdnac.cisco.com:443/dna/intent/api/v1/3daa70bdcd5b
headers = {
    'x-auth-token': 'eyJhbGc ... yJbN8',
    'Content-Type': 'application/json',
}
payload = {
    "settings": {
        "dhcpServer": ["172.30.200.5"],
        "dnsServer": {
            "domainName": "devnet.local",
            "primaryIpAddress": "172.30.200.6",
            "secondaryIpAddress": "172.30.200.7"},
        "syslogServer": {"ipAddresses": ["10.255.0.1"], "configureDnacIP": True}
    }
}
response = requests.request('POST', url, headers=headers, data=payload)
print(response.status_code)
```

Refer to the exhibit. A developer writes a script to create a new network by using the Cisco DNA Center API. After running the script for the first time, the developer observes that HTTP code 404 is printed to the console. Which action resolves the problem?

- A. The x-auth-token value must be changed to a valid token.
- B. The API URL must be changed with a valid URL.
- C. The requested payload must be fixed to include missing parts.
- D. Internal errors on the code of API server must be fixed.

**Answer: B**

#### NEW QUESTION 300

- (Exam Topic 3)

Which IP service synchronizes the time across devices?

- A. DNS
- B. NTP
- C. SNMP
- D. NAT

**Answer: B**

#### NEW QUESTION 305

- (Exam Topic 3)

Which network constraint causes the performance of the application to decrease as the number of users accessing the application increases?

- A. latency
- B. loss
- C. bandwidth
- D. jitter

**Answer: C**

#### NEW QUESTION 307

- (Exam Topic 3)

Which action do webhooks enable an application to perform?

- A. Increase the request rate limit.
- B. Populate the application with restricted data.
- C. Receive real-time data.
- D. Implement a push model.

**Answer: D**

#### Explanation:

Simplifying the wording: Webhook enables the app to ( push or receive real time) . The clients should receive real time but the app pushes.

#### NEW QUESTION 312

- (Exam Topic 3)

What is a firehose webhook?

- A. It collects data from third-party cloud APIs for custom applications.
- B. It enables an application to receive real-time data from Cisco Webex.
- C. It enables data to flow from the Cisco Webex API to a user's application.
- D. It sends a notification of any event for commonly used resources.

**Answer: D**

## NEW QUESTION 315

- (Exam Topic 3)

**/api/access/global/rules** API operations on global access rules. GET PUT PATCH POST DELETE

Implementation Notes

Add a new global access rule.

Parameters

Parameter	Required	Description	Type	Data Type
body	true	Definition of the global access rule to be added.	body	ExtendedACE

Response

Response Content Type application/json

Response Object ExtendedACE

ExtendedACE Model

Field	Value	Description	Constraints
sourceAddress*	object	source address in the ace	None
destinationAddress*	object	destination address in the ace	None
kind*	string	The kind of this resource object.	None
dstSecurity	object	destination security group in the ace	None
dstSecurity. Value	string		None
active*	boolean	shows if the rule is active or inactive, default is active	None
destinationService*	object	destination service in the ace	None
permit*	boolean	shows if the action is permit or deny	None

Refer to the exhibit. Drag and drop the code from the bottom onto the box where the code is missing to complete the function that adds a new global access rule that denies traffic using the Cisco ASA REST API. Not all options are used.

```
import requests as req
def add_rule(token, asa_IP, dest v4Address):
    data = {
        "destinationAddress": {
            "kind": "IPv4Address",
            "value": dest v4Address
        },
        "destinationService": {
            "kind": "NetworkProtocol",
            "value": "ip"
        },
        ,
        "active": True,
        "sourceAddress": {
            "kind": "AnyIPAddress",
            "value": "any4"
        }
    }
    objectRequestUrl='https://'
    res = req.request(
        json=data,verify=False)
    print("Success.")
else:
    print("Failed")
```

```
if res.status_code == 201:
if res.status_code == 203:
+ asa_IP + "/api/access/global/rules"
'POST', objectRequestUrl,
"permit": False,
+ asa_IP = "/access/global/rules"
```

- A. Mastered
- B. Not Mastered

Answer: A

### Explanation:

Graphical user interface, text, application, email Description automatically generated

## NEW QUESTION 318

- (Exam Topic 3)

```
1 - hosts: nxos_rtr
2   gather_facts: false
3   tasks:
4     - nxos_hsrp:
5       group: "{{ item.group }}"
6       vip: "{{ item.vip }}"
7       priority: 115
8       interface: "{{ item.interface }}"
9       preempt: enabled
10      auth_type: md5
11      auth_string: "s3cuR3"
12      version: 2
13      host: "{{ hostvars['rtr-1a']['ansible_ssh_host'] }}"
14      with_items:
15        - "{{ hsrp_groups }}"
16      delegate_to: "{{ hostvars['srv-1a']['ansible_ssh_host'] }}"
```

Refer to the exhibit. An engineer runs a network that consists of Cisco Nexus devices. The network is distributed between data centers in different locations. The switches are configured using standalone connections and a single point of failure. Which process is being automated by the Ansible playbook?

- A. enabling HSRP on the nxos\_rtr inventory host
- B. enabling HSRP on the rtr-1a inventory host
- C. executing HSRP configuration from the Ansible controller node
- D. executing HSRP configuration from the srv-1a inventory host

**Answer: B**

### NEW QUESTION 321

- (Exam Topic 3)

Drag and drop the code snippets from the bottom onto the blanks in the code to complete the happy path scenario. Not all options are used.

```
import member as m
import pytest
class Team:
    def __init__(self, name):
        self.name = name
        self.members = []
    def add_member(self, member):
        if member:
            if member not in self.members:
                [ ]
            return True
        else:
            [ ]
    else:
        [ ]

@pytest.fixture
def team():
    team = Team('Reds')
    yield team
    del team

@pytest.fixture
def member():
    member = m.Member('Chris George')
    yield member
    del member

@pytest.mark.usefixtures('team', 'member')
class TestHappyPathAddMemberToTeam:
    def test_add_member_to_team(self, team, member):
        assert [ ] is True
```

- return True
- team.add\_member(member)
- self.members.append(member)
- yield member
- return False
- member.add\_member()

- A. Mastered
- B. Not Mastered

**Answer: A**

**Explanation:**



```
import member as m
import pytest
class Team:
    def __init__(self, name):
        self.name = name
        self.members = []
    def add_member(self, member):
        if member:
            if member not in self.members:
                member.add_member()
            return True
        else:
            return False
    else:
        team.add_member(member)

@pytest.fixture
def team():
    team = Team('Reds')
    yield team
    del team

@pytest.fixture
def member():
    member = m.Member('Chris George')
    yield member
    del member

@pytest.mark.usefixtures('team', 'member')
class TestHappyPathAddMemberToTeam:
    def test_add_member_to_team(self, team, member):
        assert yield member is True
```

```
return True
team.add_member(member)
self.members.append(member)
yield member
return False
member.add_member()
```

#### NEW QUESTION 322

- (Exam Topic 3)

Refer to the exhibit.

#### HTTP Request

```
curl http://hello-api.info -v
```

#### HTTP Response

```
* Trying hello-app.info...
* TCP_NODELAY set
* Connected to hello-app.info (hello-app.info) port 80 (#0)
> GET / HTTP/1.1
> Host:hello-app.info
> User-Agent: curl/7.64.1
> Accept: */*
>

< HTTP/1.1 502 Bad Gateway
< Server: nginx/1.14.0 (Ubuntu)
< Date: Sat, 21 Nov 2020 11:09:54 GMT
< Content-Type: text/html
< Content-Length: 182
< Connection: keep-alive
```

A developer cannot reach the web application behind an NGINX load balancer. The developer sends a request to an application FQDN with cURL but gets an HTTP 502 response. Which action solves the problem?

- A. Fix errors in the server configuration, which is behind the load balancer.
- B. Bring up the load balancer to the active state.
- C. Fix errors in the cURL request sent by the client.
- D. Change the default gateway on the load balancer to an active one.

**Answer: A**

#### Explanation:

The HyperText Transfer Protocol (HTTP) 502 Bad Gateway server error response code indicates that the server, while acting as a gateway or proxy, received an invalid response from the upstream server.

<https://developer.mozilla.org/en-US/docs/Web/HTTP/Status/502#:~:text=The%20HyperText%20Transfer%20P>

#### NEW QUESTION 323

- (Exam Topic 3)  
Refer to the exhibit.

```
import requests

base_url = f"https://webexapis.com/v1/people"

headers = {
    "Accept": "application/json"
}

person_email = 'customer@company.com'
url = f"{base_url}?email={person_email}"

response = requests.request("GET", url, headers=headers)

if response.status_code == 200 :
    print(f"OK - Added {person_email}")
else:
    print(f"ERROR CODE {response.status_code}")
```

A collaboration engineer has developed a script to automate the gathering of information by providing the email address of the individual. When the engineer tests the script, a 401 error is received. Which command fixes the script?

- A. Add "Authorization": "Bearer <WEBEX\_TOKEN>" to the headers
- B. Add "Authentication": "Basic <WEBEX\_TOKEN>" in the base\_url after "https://".
- C. Add "<Authorization>:<password>@" in the base\_url after "https://".
- D. Add "Authentication": "Bearer <WEBEX\_TOKEN>" to the headers

**Answer:** A

#### NEW QUESTION 327

- (Exam Topic 3)  
Which platform has an API that has the capability to obtain a list of vulnerable software on user devices?

- A. Cisco Advanced Malware Protection
- B. Cisco Umbrella
- C. Cisco Identity Services Engine
- D. Cisco Firepower

**Answer:** A

#### NEW QUESTION 330

- (Exam Topic 3)  
Refer to the exhibit.

```
git clone git://git.kernel.org/.../git.git my.git
cd my.git
git branch -d -r origin/todo origin/html origin/man    (1)
git branch -D test                                     (2)
```

What does the command marked (2) do when it is run?

- A. It duplicates the test" branch.
- B. It deletes the "test" branch only if a new branch is created.
- C. It deletes the "test" branch.
- D. It does not delete the branch until it is merged.

**Answer:** C

#### NEW QUESTION 331

- (Exam Topic 3)

```

import requests
def main():
    def getCreds():
        user = input('User: ')
        pwd = Getpass('Pass: ')
        return (user,pwd)

    def login(ipaddr,user,pwd):
        url = "https://{ipaddr}/api/aaaLogin.json".format(ipaddr=ipaddr)
        data = '{"aaaUser":{"attributes":{"name":"%(user)s","pwd":"%(pwd)s"}}}'
        + '{"pwd":pwd,"user":user}'
        response = requests.post(url,data=data,verify=False)
        cookie = response.headers['Set-Cookie']
        return cookie

    def getstuff(ipaddr,cookie):
        headers = {"Cookie":cookie}
        url = "https://{ipaddr}/api/node/class/fvTenant.json".format(ipaddr=ipaddr)
        response = requests.get(url,headers=headers,verify=False)
        grouplist = []
        for x in response.json()["imdata"]:
            grouplist.append(x["fvTenant"]["attributes"]["name"])
        return ','.join(grouplist)

    ipaddr = "192.168.255.2"
    user,pwd = getCreds()
    token = login(ipaddr,user,pwd)
    return getstuff(ipaddr,cookie)

if __name__ == '__main__':
    result = main()
    print(result)

```

Refer to the exhibit. Which action does the script perform?

- A. It queries user credentials from Cisco IOS XE devices.
- B. It retrieves device identification from Cisco DNA Center.
- C. It exports SSID information from Meraki dashboard.
- D. It collects group information from ACI.

**Answer: D**

### NEW QUESTION 333

- (Exam Topic 3)

Refer to the exhibit.

```

url = 'https://api.amp.cisco.com/v1/computers'
response = session.get (url)
response_json = response.json ()

for item in response_json ['data'] :
    print (item['connector_guid'], item['hostname'])

while 'next' in response_json['metadata'] ['links']:
    
    response = session.get (next_url)
    response_json = response.json()
    for item in response_json['data']:
        print(item['connector_guid'], item['hostname'])

```

An engineer sends the request to collect data over Cisco AMP for Endpoints API. The Engineer must list guide and hostname data for all computers, but the first request returns only 500 items out of 2,000. Then, the engineer adds the loop to collect all the data. What must be added to the script where the code is missing to complete the requests?

- A. `next_url = response_json ['metadata'] ['links'] ['next']`
- B. `next_url = response_json ['metadata'] ['next']`
- C. `next_url = response_json ['next']`
- D. `next_url = response_json ['metadata'] ['links']`

A. Option A



- B. Option B
- C. Option C
- D. Option D

**Answer:** A

**Explanation:**

```
https://github.com/CiscoSecurity/amp-03-pagination/blob/master/01_paginate.py while 'next' in response_json['metadata']['links']:
next_url = response_json['metadata']['links']['next'] response = session.get(next_url)
response_json = response.json()
for computer in response_json['data']: print(computer['connector_guid'], computer['hostname'])
```

**NEW QUESTION 335**

- (Exam Topic 3)

Refer to the exhibit.

```
module ietf-interface {
  namespace "urn:ietf:params:xml:ns:yang:ietf-interfaces";
  prefix if;
  import ietf-yang-types {
    prefix yang;
  }
  container interfaces-state {
    list interface {
      key "name";
      leaf name {
        type string;
      }
      leaf admin-status {
        type enumeration {
          enum up {
            value 1;
          }
          enum down {
            value 2;
          }
          enum testing {
            value 3;
          }
        }
      }
      leaf if-index {
        type int32 {
          range "1..2147483647"
        }
      }
      container statistics {
        leaf in-octets {
          type yang:counter64;
        }
        leaf in-unicast-pkts {
          type yang:counter64;
        }
      }
    }
  }
}
```

Which XML snippet has interface information that conforms to the YANG model?

A. Text Description automatically generatedB.

```
<interfaces-state
xmlns="urn:ietf:params:xml:ns:yang:ietf-interfaces"
xmlns:if="urn:ietf:params:xml:ns:yang:ietf-interfaces">
  <interface name="GigabitEthernet1">
    <admin-status>1</admin-status>
    <if-index>1</if-index>
    <statistics>
      <in-octets>408164820</in-octets>
      <in-unicast-pkts>728061</in-unicast-pkts>
    </statistics>
  </interface>
</interfaces-state>
```

Text

Description automatically generated



```
<interfaces-state
xmlns="urn:ietf:params:xml:ns:yang:ietf-interfaces"
xmlns:if="urn:ietf:params:xml:ns:yang:ietf-interfaces">
  <interface>
    <name>GigabitEthernet1</name>
    <admin-status>up</admin-status>
    <if-index>1</if-index>
    <in-octets>408164820</in-octets>
    <in-unicast-pkts>728061</in-unicast-pkts>
  </interface>
</interfaces-state>
```

B. Text Description automatically generated

```
<interfaces-state
xmlns="urn:ietf:params:xml:ns:yang:ietf-interfaces"
xmlns:if="urn:ietf:params:xml:ns:yang:ietf-interfaces">
  <interface>
    <name>GigabitEthernet1</name>
    <admin-status>up</admin-status>
    <if-index>1</if-index>
    <statistics>
      <in-octets>408164820</in-octets>
      <in-unicast-pkts>728061</in-unicast-pkts>
    </statistics>
  </interface>
</interfaces-state>
```

C. Text Description automatically generated

```
<interfaces-state
xmlns="urn:ietf:params:xml:ns:yang:ietf-interfaces"
xmlns:if="urn:ietf:params:xml:ns:yang:ietf-interfaces">
  <interface>
    <name>GigabitEthernet1</name>
    <admin-status>1</admin-status>>
    <if-index>1</if-index>
    <statistics>
      <in-octets>408164820</in-octets>
      <in-unicast-pkts>728061</in-unicast-pkts>
    </statistics>
  </interface>
</interfaces-state>
```

**Answer: C**

**Explanation:**

<https://datatracker.ietf.org/doc/id/draft-ietf-netmod-interfaces-cfg-01.txt> <admin-status>up</admin-status>

#### NEW QUESTION 337

- (Exam Topic 3)

```
api_endpoint = f"https://veryusefulapi/v2/authenticate"

headers = {
    "Authorization": "Basic YWRtaW46c3VwZXJzZWNYZXQ="
    "Accept": "application/json"
}

req = requests.get(api_endpoint, headers=headers)
```

Refer to the exhibit. A developer is part of a team that is working on an open-source project in which source code is hosted in a public GitHub repository. While the application was built, security concerns were addressed by encrypting the credentials on the server. After a few months, the developer realized that a hacker managed to gain access to the account. The exhibit contains part of the source code for the login process. Why was the attacker able to access the developer's account?

- A. The encoded credentials were available in the source code.
- B. The application was not encrypting the communication with the server.

- C. The credentials were encrypted in the source code.
- D. An SSL certificate was used instead of the TLS protocol to authenticate.

**Answer:** A

#### NEW QUESTION 341

- (Exam Topic 3)

What is a benefit of a distributed version control system?

- A. encourages users to commit small pieces of work to the system more frequently
- B. ensures that all code meets minimum standards before being committed to the system
- C. allows users to work on the codebase even when not connected to the Internet
- D. ensures that all code is tested before being committed to the system

**Answer:** C

#### Explanation:

Reference: <https://about.gitlab.com/topics/version-control/benefits-distributed-version-control-system/>

#### NEW QUESTION 346

- (Exam Topic 3)

```
#!/bin/bash
apt-get update
apt-get -y install git
cd Code/Network_Config
mkdir PRODUCTION
cd PRODUCTION
touch state.yml
vi state.yml
```

Refer to the exhibit. A network engineer executes the bash script shown. Which two things are achieved by running the script? (Choose two.)

- A. A directory called PRODUCTION is created.
- B. The engineer changes to the parent directory.
- C. A YAML file is created.
- D. A YAML file is removed.
- E. A directory called state.yml is created.

**Answer:** AC

#### NEW QUESTION 347

- (Exam Topic 2)

Which Cisco product provides malware and content filtering through DNS?

- A. Cisco ASA Firepower module
- B. Cisco AMP
- C. Cisco ISE
- D. Cisco Umbrella

**Answer:** D

#### NEW QUESTION 352

- (Exam Topic 2)

What is the main purpose of a code review?

- A. To provide the technical lead visibility into all code
- B. To identify and review errors with the team
- C. To ensure that all code is checked in simultaneously
- D. To detect logical errors

**Answer:** B

#### NEW QUESTION 356

- (Exam Topic 2)

What is a benefit of a model-driven approach for infrastructure automation?

- A. enforces the generation of all automation scripts through the modeling environment
- B. provides a small learning curve and helps system administrators with limited coding experience
- C. ensures that system administrators gain a good understanding of coding and expand their experience and capabilities
- D. enables a user to understand a declarative language to translate the model into an actionable script

**Answer:** A

#### NEW QUESTION 357

- (Exam Topic 2)

What is a benefit of using edge computing in an IoT implementation?

- A. low cost in network design
- B. low network design complexity
- C. high availability for network components
- D. high speed in data processing

**Answer:** D

#### NEW QUESTION 361

- (Exam Topic 2)

Drag and drop the code snippets from the bottom to the blanks in the code to test the API response through the Python unittest library. Not all options are used.

```
import unittest
import json
from apidogs import app

class TestsAPIDogs(unittest.TestCase):

    def setUp(self):
        self.app = app.test_client()

    # Check status response of API
    def test_status(self):
        resp =self.app.get('/dogs/all')
        status_code = response.
        self.assertEqual(status_code, )

    # Check for content type is in application/json
    def test_content_type(self):
        resp =self.app.get('/dogs/all')
        self.assertEqual(resp. , 'application/json')

    def test_item_not_exist(self):
        resp =self.app.get('/dogs?id= ')
        self.assertEqual(response.status code,404)
```

none

status\_code

403

content

200

status

content\_type

- A. Mastered
- B. Not Mastered

**Answer:** A

#### Explanation:

Graphical user interface, text Description automatically generated

#### NEW QUESTION 363

- (Exam Topic 3)

Which TCP port is used to connect to a network device by using Telnet?

- A. 23
- B. 69
- C. 400
- D. 830

**Answer:** A

#### NEW QUESTION 367

- (Exam Topic 3)

Which IP service is used to monitor the performance of network devices?

- A. SNMP
- B. DHCP
- C. DNS
- D. NTP

**Answer:** A

## NEW QUESTION 368

- (Exam Topic 3)

```
get_interface_info_by_id(device_id, headers=None, **request_parameters) [source]
```

Returns list of interfaces by specified device.

### Parameters

- **device\_id** (*basestring*) – Device ID.
- **headers** (*dict*) – Dictionary of HTTP Headers to send with the Request .
- **\*\*request\_parameters** – Additional request parameters (provides support for parameters that may be added in the future).

### Returns

JSON response. Access the object's properties by using the dot notation or the bracket notation.

### Return type

MyDict

### Raises

- **TypeError** – If the parameter types are incorrect.
- **MalformedRequest** – If the request body created is invalid.
- **ApiError** – If the DNA Center cloud returns an error.

Refer to the exhibit. Drag and drop the code from the bottom onto the box where the code is missing to return the number of interfaces on a network device by using the Cisco DNA Center SDK. Not all options are used.

```
from dnacentersdk import DNACenterAPI
base_url = 'https://10.9.11.226'
[ ] = 'da4606c3-63ad-4ed4-8f35-6bfec7c2df04'

dnac = [ ](username='cisco', password='secret',
          base_url=base_url, version='1.3.3', verify=False)

[ ] = [item['portName'] for item in
      dnac.[ ].get_interface_info_by_id(device_id)['response']]

# Check the number of ports on the device
print(f'The list of interfaces contains {len(port_list)} items.')

# Output
# The list of interfaces contains 54 items.
```

router\_id

device\_id

DNACenterAPI

DNAC

port\_list

routers

devices

- A. Mastered  
 B. Not Mastered

**Answer: A**

**Explanation:**



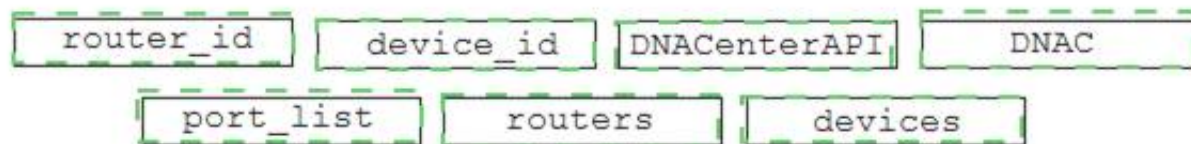
```
from dnacentersdk import DNACenterAPI
base_url = 'https://10.9.11.226'
device_id = 'da4606c3-63ad-4ed4-8f35-6bfec7c2df04'

dnac = DNACenterAPI(username='cisco', password='secret',
                    base_url=base_url, version='1.3.3', verify=False)

port_list = [item['portName'] for item in
              dnac.devices.get_interface_info_by_id(device_id)['response']]

# Check the number of ports on the device
print(f'The list of interfaces contains {len(port_list)} items.')

# Output
# The list of interfaces contains 54 items.
```



### NEW QUESTION 370

- (Exam Topic 3)

A developer pushes an application to production. The application receives a webhook over HTTPS without a secret. The webhook information contains credentials to service in cleartext. When the information is received, it is stored in the database with an SHA-256 hash. Credentials to the database are accessed at runtime through the use of a vault service. While troubleshooting, the developer sets the logging to debug to view the message from the webhook. What is the security issue in this scenario?

- A. Database credentials should be accessed by using environment variables defined at runtime.
- B. During the transport of webhook messages, the credentials could be unencrypted and leaked.
- C. During logging, debugging should be disabled for the webhook message.
- D. Hashing the credentials in the database is not secure enough; the credentials should be encrypted.

**Answer: B**

### NEW QUESTION 375

- (Exam Topic 3)

Which function does a router provide to a network?

- A. broadcast domain segmentation
- B. unique host on a Layer 3 network
- C. unique hardware address for every node on a LAN
- D. broadcast domain extension

**Answer: B**

### NEW QUESTION 379

- (Exam Topic 3)

A developer completed the creation of a script using Git. Before delivering it to the customer, the developer wants to be sure about all untracked files, without losing any information. Which command gathers this information?

- A. git clean -n
- B. git rm -f
- C. git clean -r
- D. git rm \*

**Answer: A**

### NEW QUESTION 381

- (Exam Topic 3)

To which stage of development do Infrastructure as Code principles relate?

- A. manual configuration
- B. service provisioning
- C. physical deployment
- D. requirement collection

**Answer: B**

### NEW QUESTION 383

- (Exam Topic 3)

```
1 - name: Configure Interfaces
2   with_items: "{{ interfaces }}"
3   netconf_config:
4     <<: *host_info
5     xml: |
6       <config>
7         <interfaces xmlns="urn:ietf:params:xml:ns:yang:ietf-interfaces">
8           <interface>
9             <name>{{ item.interface_type }}{{ item.interface_id }}</name>
10            <description>{{ item.description }}</description>
11            <type xmlns:ianaift="urn:ietf:params:xml:ns:yang:iana-if-type">ianaift:ethernetCsmacd</type>
12            <enabled>true</enabled>
13            <ipv4 xmlns="urn:ietf:params:xml:ns:yang:ietf-ip">
14              <address>
15                <ip>{{ item.ip_address }}</ip>
16                <netmask>{{ item.subnet_mask }}</netmask>
17              </address>
18            </ipv4>
19          </interface>
20        </interfaces>
21      </config>
```

Refer to the exhibit. A network engineer must configure new interfaces on a set of devices and is planning to use an Ansible playbook for the task. All devices support SSH and NETCONF protocol, and the interface variables are unique per device. In which directory are the YAML files including variables hosted to automate the task with the netconf\_config module?

- A. current working directory
- B. host\_vars directory
- C. group\_vars directory
- D. home directory

**Answer:** A

#### NEW QUESTION 387

- (Exam Topic 3)

What is a benefit of using a code review process in application development?

- A. accelerates the deployment of new features in an existing application
- B. provides version control during code development
- C. enables the quick deployment of new code
- D. eliminates common mistakes during development

**Answer:** D

#### NEW QUESTION 389

- (Exam Topic 3)

Drag and drop the steps from the left into order on the right to create a common CI/CD pipeline process. Not all options are used.

Build	step 1
Commit	step 2
Deploy	step 3
Evaluate	step 4
Test	
Regress	

- A. Mastered
- B. Not Mastered

**Answer:** A

**Explanation:**

- Build
- Commit
- Commit
- Build
- Deploy
- Test
- Evaluate
- Deploy
- Test
- Regress

## NEW QUESTION 391

- (Exam Topic 3)

CISCO INTERSIGHT

Introduction

Create Server Profile and Re...

Create Server VMedia Policy

Retrieve Server VMedia Policy...

Create Server Boot Policy

Retrieve Server Boot Policy by...

Create Server NTP Policy

Retrieve NTP Policy by Moid

Create 'server-01' Server Profi...

Retrieve 'server-01' Server Pr...

Create 'server-02' Server Profi...

Retrieve 'server-02' Server Pr...

Update vmedia/Profiles Profil...

Update Boot/PrecisionPolicie...

Update NTP/Policies Profiles ...

Retrieve Server RackUnit Res...

Create Server Profile and Resources

POST Create Server VMedia Policy

https://www.intersight.com/api/v1/vmedia/Policies

HEADERS

Accept

application/json

Authorization

Signature {{httpsig}}

Digest

{{computed-digest}}

Date

{{current-date}}

Content-Type

application/json

Refer to the exhibit. Drag and drop the code from the bottom onto the box where the code is missing to construct a Python script by using the Cisco SDK. Not all options are used.

```
import sys, json, argparse
from intersight.intersight_api_client import IntersightApiClient
from intersight.apis import asset_device_registration_api, asset_device_claim_api

result = dict(changed=False)

parser = argparse.ArgumentParser()
parser.add_argument('-a', '--api_params', default='intersight_api_params.json')
parser.add_argument('-t', '--target_host', dest='hostname', required=True)
args = parser.parse_args()
with open(args.api_params, 'r') as api_file:
    intersight_api_params = json.load( )
api_instance = IntersightApiClient(
    host=intersight_api_params[' '],
    private_key=intersight_api_params['api_private_key_file'],
    api_key_id=intersight_api_params['api_key_id'],
)
api_handle = asset_device_registration_api.AssetDeviceRegistrationApi(api_instance)

kwargs = dict(filter="ConnectionStatus eq 'Connected'")
= api_handle.asset_device_registrations_get(** )
for device in api_result.results:
    if device.device_ip_address[0] == args.hostname:
        api_handle = asset_device_claim_api.AssetDeviceClaimApi(api_instance)
        api_handle.asset_device_claims_moid_delete(moid=device.device_claim.moid)
        result['changed'] = True
        break
```

- kwargs
- args
- api\_file
- api\_key
- api\_base\_uri
- result
- api\_result

A. Mastered



B. Not Mastered

Answer: A

Explanation:

```
import sys, json, argparse
from intersight.intersight_api_client import IntersightApiClient
from intersight.apis import asset_device_registration_api, asset_device_claim_api

result = dict(changed=False)

parser = argparse.ArgumentParser()
parser.add_argument('-a', '--api_params', default='intersight_api_params.json')
parser.add_argument('-t', '--target_host', dest='hostname', required=True)
args = parser.parse_args()
with open(args.api_params, 'r') as api_file:
    intersight_api_params = json.load( api_file )
api_instance = IntersightApiClient(
    host=intersight_api_params[' api_base_uri '],
    private_key=intersight_api_params['api_private_key_file'],
    api_key_id=intersight_api_params['api_key_id'],
)
api_handle = asset_device_registration_api.AssetDeviceRegistrationApi(api_instance)

kwargs = dict(filter="ConnectionStatus eq 'Connected'")
result = api_handle.asset_device_registrations_get(** kwargs )
for device in api_result.results:
    if device.device_ip_address[0] == args.hostname:
        api_handle = asset_device_claim_api.AssetDeviceClaimApi(api_instance)
        api_handle.asset_device_claims_moid_delete(moid=device.device_claim.moid)
        result['changed'] = True
        break
```

kwargs

args

api\_file

api\_key

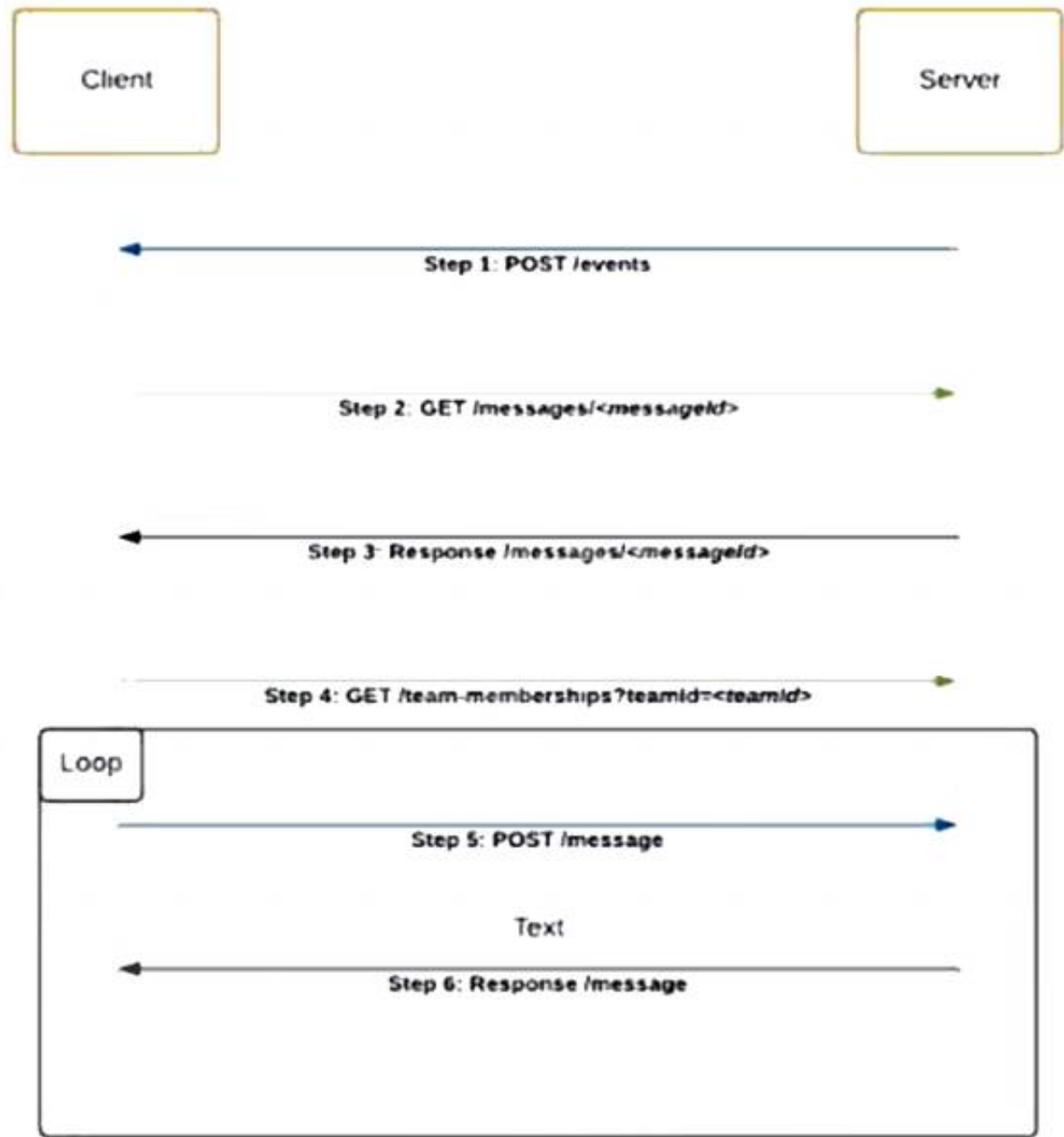
api\_base\_uri

result

api\_result

NEW QUESTION 392

- (Exam Topic 3)



Refer to the exhibit. Which code snippet represents the sequence.

A.



```
@flask_app.route('/events', methods=['POST'])
def webex_teams_webhook_events():
    json_data = request.json['data']
    response = requests.get(MESSAGE_URL +
    json_data['id'], headers=headers)
    if response.json()['text'] == 'Alert':
        response = requests.get(Team_MEMBERSHIPS_URL,
        headers=headers, params=params)
        for info in response.json()['items']:
            data = {'personId': info['personId'], 'text':
            'Alert'}
            response = requests.post(MESSAGES_URL,
            headers=headers, params=params)
```

B. @flask\_app.route('/events', methods=['POST'])

```
def webex_teams_webhook_events():
    json_data = request.json['data']
    if response.json()['text'] == 'Alert':
        response = requests.get(MESSAGE_URL +
        json_data['id'], headers=headers)
        response = requests.get(Team_MEMBERSHIPS_URL,
        headers=headers, params=params)
        for info in response.json()['items']:
            data = {'personId': info['personId'],
            'text': 'Alert'}
            response = requests.post(MESSAGES_URL,
            headers=headers, params=params)
```

C. @flask\_app.route('/events', methods=['POST'])

```
def webex_teams_webhook_events():
    json_data = request.json['data']
    response = requests.post(MESSAGE_URL +
    json_data['id'], headers=headers)
    if response.json()['text'] == 'Alert':
        for info in response.json()['items']:
            response = requests.get(Team_MEMBERSHIPS_URL,
            headers=headers, params=params)
            data = {'personId': info['personId'], 'text':
            'Alert'}
            response = requests.get(MESSAGES_URL,
            headers=headers, params=params)
```

D. @flask\_app.route('/events', methods=['POST'])

```
def webex_teams_webhook_events():
    json_data = request.json['data']
    response = requests.get(Team_MEMBERSHIPS_URL,
    headers=headers, params=params)
    if response.json()['text'] == 'Alert':
        response = requests.get(MESSAGE_URL +
        json_data['id'], headers=headers)
        for info in response.json()['items']:
            data = {'personId': info['personId'], 'text':
            'Alert'}
            response = requests.post(MESSAGES_URL,
            headers=headers, params=params)
```

Answer: C

#### NEW QUESTION 394

- (Exam Topic 3)

A developer plans to deploy a new application that will use an API to implement automated data collection from Webex with these requirements:

The application was created by using the request library. Requires HTTP basic authentication.

Provides data in JSON or XML formats.

Which Cisco DevNet resource helps the developer with how to use the API?

- A. DevNet sandbox
- B. API documentation
- C. forums
- D. DevNet code exchange

**Answer: B**

#### NEW QUESTION 397

- (Exam Topic 3)

Which traffic is handled on the control plane?

- A. BGP
- B. SMB
- C. NTP
- D. NETCONF

**Answer: A**

#### NEW QUESTION 398

- (Exam Topic 3)

A developer creates an application that must provide an encrypted connection or API keys. The keys will be used to communicate with a REST API. Which command must be used for the secure connection?

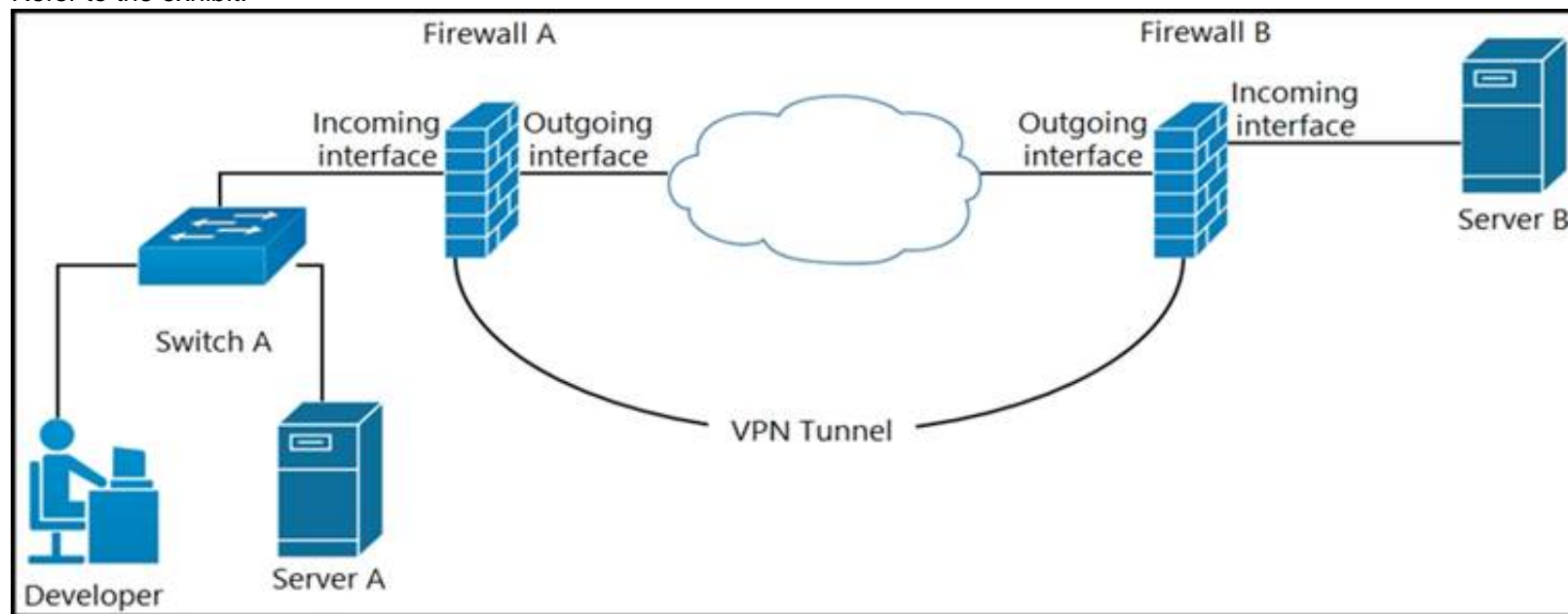
- A. curl-X PUSH 'http://username.app.com/endpoint/?api\_key=12345abcdef'
- B. curl -v 'ftp://username.app.com/endpoint/?api\_key=12345abcdef'
- C. curl -X GET 'https://username.app.com/endpoint/?api\_key=12345abcdef'
- D. curl-X GET 'http://username.app.com/endpoint/?api\_key=12345abcdef'

**Answer: C**

#### NEW QUESTION 399

- (Exam Topic 3)

Refer to the exhibit.



A developer can access the TLS REST API on server A, but cannot access the API on server B. The developer can ping server B. When the developer performs a packet capture on the TLS REST API port on server B, the capture shows that the packet arrived and the server responded. What causes the issue?

- A. Port 80 is blocked on the outgoing interface of firewall B.
- B. Port 443 is blocked on the outgoing interface of firewall A.
- C. Port 443 is blocked on the incoming interface of firewall B.
- D. Port 80 is blocked on the incoming interface of firewall A.

**Answer: C**

#### NEW QUESTION 400

- (Exam Topic 3)

An engineer needs to collect information about 20,000 Bluetooth clients using the Cisco Meraki API. The API returns only 1,000 results. One of the HTTP response headers has the data:

Link: [https://api.meraki.com/info/api/v0/networks/ABC/bluetoothClients?perPage=1000&startingAfter=1000>;rel="n](https://api.meraki.com/info/api/v0/networks/ABC/bluetoothClients?perPage=1000&startingAfter=1000>;rel=n)

Which RFC is implemented by the API to apply the restriction?

- A. RFC 5988 – Web Linking
- B. RFC 5890 – Response Constraints
- C. RFC 5005 – Feed Paging and Archiving

D. RFC 5446 – Content Limits

**Answer:** C

#### NEW QUESTION 404

- (Exam Topic 3)

A developer writes an application that refines data in temporary secure file storage hosted on the public cloud. Data will be deleted after processing and does not contain any private information. What is the advantage that a public cloud deployment provides to the developer?

- A. high security with encryption
- B. ease in infrastructure management
- C. flexible development
- D. bespoke services

**Answer:** B

#### NEW QUESTION 407

- (Exam Topic 3)

Which HTTP error code series relates to redirection?

- A. 400
- B. 500
- C. 200
- D. 300

**Answer:** D

#### Explanation:

1xx - Informational: The server has received the request and is continuing the process

2xx - Successful: The request was successful and the browser has received the expected information 3xx (Redirection): You have been redirected and the completion of the request requires further action

4xx (Client Error): The website or the page could not be reached, either the page is unavailable or the request contains bad syntax

5xx (Server Error): While the request appears to be valid, the server could not complete the request

#### NEW QUESTION 411

- (Exam Topic 3)

What are two benefits of implementing common data structures when working with APIs in remote systems? (Choose two.)

- A. ensures that developers are limited to using one data schema type
- B. prevents multivendor interoperability
- C. improves security in RESTful web services
- D. enforces standardized data structures
- E. leverages code that is easily managed and reused

**Answer:** BE

#### NEW QUESTION 414

- (Exam Topic 3)

What is a principle of a code review process?

- A. Changes are made after the code is submitted to source control.
- B. It must not prevent code from getting into production as quickly as possible.
- C. Naming standards must be consistent.
- D. A technical lead must sign off on the review.

**Answer:** D

#### NEW QUESTION 418

- (Exam Topic 3)

An engineer deploys a Cisco CSR 1000 V instance to a virtual machine. The engineer must output the device configuration in JSON format. Which protocol is used for this task?

- A. YANG
- B. NETCONF
- C. SNMP
- D. RESTCONF

**Answer:** D

#### NEW QUESTION 420

- (Exam Topic 3)

Refer to the exhibit. Drag and drop the code snippets from the bottom onto the blanks in the Python script to retrieve a list of network devices from Cisco DNA Center. Not all options are used.



```
import requests
import json
from urllib3.exceptions import InsecureRequestWarning

requests.packages.urllib3.disable_warnings()

dna_center_url = "My_DNA_Center_URL"
authentication = ("dnacenteruser", "dnacenter_password")

def get_token():
    url = "https:// " + dna_center_url + "/dna/system/api/v1/auth/token"
    response = requests.post(url, auth=authentication, verify=False)
    token = response.json()['Token']
    return token

def get_device_list():
    token = 
    url = "https:// " + dna_center_url + "dna/intent/api/v1/" + 
    header = { : token, 'content-type' : 'application/json' }
    response = requests.get(url, headers=header)
    device_list = 
    print(json.dumps(device_list, indent=4))

if __name__ == "__main__":
    get_device_list()
```

get\_token()

network-device

x-auth-token

response.json()

response.xml

Authorization

- A. Mastered
- B. Not Mastered

**Answer:** A

**Explanation:**

```
import requests
import json
from urllib3.exceptions import InsecureRequestWarning

requests.packages.urllib3.disable_warnings()

dna_center_url = "My_DNA_Center_URL"
authentication = ("dnacenteruser", "dnacenter_password")

def get_token():
    url = "https:// " + dna_center_url + "/dna/system/api/v1/auth/token"
    response = requests.post(url, auth=authentication, verify=False)
    token = response.json()['Token']
    return token

def get_device_list():
    token = get_token()
    url = "https:// " + dna_center_url + "dna/intent/api/v1/" + network-device
    header = { x-auth-token: token, 'content-type' : 'application/json' }
    response = requests.get(url, headers=header)
    device_list = response.json()
    print(json.dumps(device_list, indent=4))

if __name__ == "__main__":
    get_device_list()
```

get\_token()

network-device

x-auth-token

response.json()

response.xml

Authorization

#### NEW QUESTION 425

- (Exam Topic 3)

A company requires a new platform to store large volumes of log data that is generated in their assembly plant. The platform must be scalable, so the underlying technology must provide a path for fast deployment of new nodes for data and indexing? The data contains sensitive information, so specialist encryption tools must be used to secure the data. Which application deployment model meets the requirements?

- A. edge
- B. private cloud
- C. public cloud
- D. hybrid cloud

**Answer:** D



**Explanation:**

A hybrid cloud combines the benefits of both a private cloud, which offers the ability to store sensitive data in a secure, dedicated environment, and a public cloud, which offers the ability to scale quickly and easily by deploying new nodes as needed. With a hybrid cloud deployment, you could use specialist encryption tools to secure the sensitive data in the private cloud, and then take advantage of the scalability and flexibility of the public cloud to handle the large volumes of log data.

**NEW QUESTION 429**

.....

## Relate Links

**100% Pass Your 200-901 Exam with ExamBible Prep Materials**

<https://www.exambible.com/200-901-exam/>

## Contact us

We are proud of our high-quality customer service, which serves you around the clock 24/7.

Viste - <https://www.exambible.com/>