



**Microsoft**

## **Exam Questions AZ-800**

Administering Windows Server Hybrid Core Infrastructure

### NEW QUESTION 1

SIMULATION - (Topic 4)

Task 9

You plan to create group managed service accounts (gMSAs).

You need to configure the domain to support the creation of gMSAs.

- A. Mastered
- B. Not Mastered

**Answer:** A

#### Explanation:

To configure the domain to support the creation of gMSAs, you need to perform the following steps:

? On a domain controller or a computer that has the Remote Server Administration

Tools (RSAT) installed, open PowerShell as an administrator and run the following command to install the Active Directory module:

Install-WindowsFeature -Name RSAT-AD-PowerShell

? Run the following command to create a Key Distribution Service (KDS) root key, which is required for generating passwords for gMSAs. You only need to do this once per domain:

Add-KdsRootKey -EffectiveImmediately

? Wait for at least 10 hours for the KDS root key to replicate to all domain controllers in the domain. Alternatively, you can use the -EffectiveTime parameter to specify a past date and time for the KDS root key, but this is not recommended for security reasons. For more information, see Add-KdsRootKey.

? After the KDS root key is replicated, you can create and configure gMSAs using

the New-ADServiceAccount and Set-ADServiceAccount cmdlets. For more information, see Create a gMSA and Configure a gMSA.

### NEW QUESTION 2

SIMULATION - (Topic 4)

Task2

You need to ensure that the Azure file share named share1 can sync to on-premises servers.

The required source files are located in a folder named \\dc1.contoso.com\install. You do NOT need to specify the on-premises servers at this time.

- A. Mastered
- B. Not Mastered

**Answer:** A

#### Explanation:

One possible solution to ensure that the Azure file share named share1 can sync to on-premises servers is to use Azure File Sync. Azure File Sync allows you to centralize your file shares in Azure Files without giving up the flexibility, performance, and compatibility of an on-premises file server. It does this by transforming your Windows Servers into a quick cache of your Azure file share. You can use any protocol available on Windows Server to access your data locally (including SMB, NFS, and FTPS) and you can have as many caches as you need across the world1.

Here are the steps to configure Azure File Sync for the Azure file share named share1 and the source files located in a folder named \\dc1.contoso.com\install:

? On the Azure portal, create a Storage Sync Service in the same region as your storage account that contains the Azure file share named share1. For more information on how to create a Storage Sync Service, see How to deploy Azure File Sync.

? On the on-premises server that hosts the folder named \\dc1.contoso.com\install, install the Azure File Sync agent. For more information on how to install the Azure File Sync agent, see Install the Azure File Sync agent.

? On the on-premises server, register the server with the Storage Sync Service that you created in the first step. For more information on how to register a server with a Storage Sync Service, see Register/unregister a server with Storage Sync Service.

? On the Azure portal, create a sync group that defines the sync topology for a set of files. In the sync group, select the Azure file share named share1 as the cloud endpoint and the folder named \\dc1.contoso.com\install as the server endpoint.

For more information on how to create a sync group, see Create a sync group and a cloud endpoint and Create a server endpoint.

? Wait for the initial sync to complete. You can monitor the sync progress on the Azure portal or on the on-premises server. For more information on how to monitor sync progress, see [Monitor sync progress].

Once the initial sync is complete, you can add more on-premises servers to the same sync group to sync and cache the content locally. You can also enable cloud tiering to optimize the storage space on the on-premises servers by tiering infrequently accessed or older files to Azure Files.

### NEW QUESTION 3

SIMULATION - (Topic 4)

Task 10

You need to configure Hyper-V to ensure that running virtual machines can be moved between SRV1 and SRV2 without downtime.

You do NOT need to move any virtual machines at this time.

- A. Mastered
- B. Not Mastered

**Answer:** A

#### Explanation:

One possible solution to configure Hyper-V to ensure that running virtual machines can be moved between SRV1 and SRV2 without downtime is to use Live Migration. Live Migration is a feature of Hyper-V that allows you to move a running virtual machine from one host to another without any noticeable interruption of service. To set up Live Migration between SRV1 and SRV2, you need to perform the following steps:

? On both SRV1 and SRV2, open Hyper-V Manager from the Administrative

Tools menu or by typing virtmgmt.msc in the Run box.

? In the left pane, right-click on the name of the server and select Hyper-V Settings.

? In the Hyper-V Settings dialog box, select Live Migrations in the navigation pane.

? Check the box Enable incoming and outgoing live migrations.

? Under Authentication protocol, select the method that you want to use to authenticate the live migration traffic between the servers. You can choose either Kerberos or CredSSP. Kerberos does not require you to sign in to the source server before starting a live migration, but it requires you to configure constrained delegation on the domain controller. CredSSP does not require you to configure constrained delegation, but it requires you to sign in to the source server through a local console session, a Remote Desktop session, or a remote Windows PowerShell session. For more information on how to configure

constrained delegation, see Configure constrained delegation.

? Under Performance options, select the option that best suits your network configuration and performance requirements. You can choose either TCP/IP or Compression or SMB. TCP/IP uses a single TCP connection for the live migration traffic. Compression uses multiple TCP connections and compresses the live migration traffic to reduce the migration time and network bandwidth usage. SMB uses the Server Message Block (SMB) 3.0 protocol and can leverage SMB features such as SMB Multichannel and SMB Direct. For more information on how to choose the best performance option, see Choose a live migration performance option.

? Under Advanced Features, you can optionally enable the Use any available network for live migration option, which allows Hyper-V to use any available network adapter on the source and destination servers for live migration. If you do not enable this option, you need to specify one or more network adapters to be used for live migration by clicking on the Add button and selecting the network adapter from the list. You can also change the order of preference by using the Move Up and Move Down buttons.

? Click OK to apply the settings.

Now, you have configured Hyper-V to enable live migration between SRV1 and SRV2. You can use Hyper-V Manager or Windows PowerShell to initiate a live migration of a running virtual machine from one server to another.

#### NEW QUESTION 4

SIMULATION - (Topic 4)

Task 11

You need to ensure that all DHCP clients that get an IP address from SRV1 will be configured to use DC1 as a DNS server.

- A. Mastered
- B. Not Mastered

**Answer: A**

#### Explanation:

One possible solution to ensure that all DHCP clients that get an IP address from SRV1 will be configured to use DC1 as a DNS server is to use the DHCP scope options. DHCP scope options are settings that apply to all DHCP clients that obtain an IP address from a specific scope. You can use the DHCP scope options to specify the DNS server IP address, as well as other parameters such as the default gateway, the domain name, and the DNS suffix. Here are the steps to configure the DHCP scope options on SRV1:

? On SRV1, open DNS Manager from the Administrative Tools menu or by typing dnsmgmt.msc in the Run box.

? In the left pane, expand your DHCP server and click on IPv4.

? In the right pane, right-click on the scope that you want to configure and select Properties.

? In the Scope Properties dialog box, click on the DNS tab.

? Check the box Enable DNS dynamic updates according to the settings below. This option allows the DHCP server to register and update the DNS records for the DHCP clients.

? Select the option Always dynamically update DNS records. This option ensures that the DHCP server updates both the A and PTR records for the DHCP clients, regardless of whether they request or support dynamic updates.

? Check the box Discard A and PTR records when lease is deleted. This option allows the DHCP server to delete the DNS records for the DHCP clients when their leases expire or are released.

? Check the box Dynamically update DNS records for DHCP clients that do not request updates. This option allows the DHCP server to update the DNS records for the DHCP clients that do not support dynamic updates, such as legacy or non-Windows clients.

? In the DNS servers section, click on the Add button to add a new DNS server IP address.

? In the Add Server dialog box, enter the IP address of DC1, which is the DNS server that you want to use for the DHCP clients, and click Add.

? Click OK to close the Add Server dialog box and return to the Scope Properties dialog box.

? Click OK to apply the changes and close the Scope Properties dialog box.

Now, all DHCP clients that get an IP address from SRV1 will be configured to use DC1 as a DNS server. You can verify the DNS configuration by using the ipconfig /all command on a DHCP client computer and checking the DNS Servers entry. You can also check the DNS records for the DHCP clients by using the DNS Manager console on DC1.

#### NEW QUESTION 5

SIMULATION - (Topic 4)

Task 8

You need to create an Active Directory Domain Services (AD DS) site named Site2 that is associated to an IP address range of 192.168.2.0 to 192.168.2.255.

- A. Mastered
- B. Not Mastered

**Answer: A**

#### Explanation:

To create an AD DS site named Site2 that is associated to an IP address range of 192.168.2.0 to 192.168.2.255, you can follow these steps:

? On a domain controller or a computer that has the Remote Server Administration

Tools (RSAT) installed, open Active Directory Sites and Services from the Administrative Tools menu or by typing dssite.msc in the Run box.

? In the left pane, right-click on Sites and select New Site.

? In the New Object - Site dialog box, enter Site2 as the Name of the new site.

Select a site link to associate the new site with, such as DEFAULTIPSITELINK, and click OK. You can also create a new site link if you want to customize the replication frequency and schedule between the sites. For more information on how to create a site link, see Create a Site Link.

? In the left pane, right-click on Subnets and select New Subnet.

? In the New Object - Subnet dialog box, enter 192.168.2.0/24 as the Prefix of the subnet. This notation represents the IP address range of 192.168.2.0 to 192.168.2.255 with a subnet mask of 255.255.255.0. Select Site2 as the Site object to associate the subnet with, and click OK.

? Wait for the changes to replicate to other domain controllers. You can verify the site and subnet creation by checking the Sites and Subnets containers in Active Directory Sites and Services.

Now, you have created an AD DS site named Site2 that is associated to an IP address range of 192.168.2.0 to 192.168.2.255. You can add domain controllers to the new site and configure the site links and site link bridges to optimize the replication topology.

#### NEW QUESTION 6

SIMULATION - (Topic 4)

Task 3

You need to configure SRV1 as a DNS server. SRV1 must be able resolve names from the contoso.com domain by using DC1. All other names must be resolved by using the root hint servers.

- A. Mastered
- B. Not Mastered

**Answer:** A

**Explanation:**

One possible solution to configure SRV1 as a DNS server that can resolve names from the contoso.com domain by using DC1 and all other names by using the root hint servers is to use conditional forwarding. Conditional forwarding allows a DNS server to forward queries for a specific domain name to another DNS server, while using the normal forwarding or root hint servers for other queries. Here are the steps to configure conditional forwarding on SRV1:

? On SRV1, open DNS Manager from the Administrative Tools menu or by typing dnsmgmt.msc in the Run box.

? In the left pane, right-click on Conditional Forwarders and select New Conditional Forwarder.

? In the New Conditional Forwarder dialog box, enter contoso.com as the DNS Domain name.

? In the IP addresses of the master servers box, enter the IP address of DC1, which is the DNS server for the contoso.com domain. You can also click on Resolve to verify the name resolution of DC1.

? Optionally, you can check the box Store this conditional forwarder in Active Directory, and replicate it as follows if you want to store and replicate the conditional forwarder in AD DS. You can also select the replication scope from the drop-down list.

? Click OK to create the conditional forwarder.

Now, SRV1 will forward any queries for the contoso.com domain to DC1, and use the root hint servers for any other queries. You can test the name resolution by using

the nslookup command on SRV1 or another computer that uses SRV1 as its DNS server. For example, you can run the following commands:

```
nslookup www.contoso.com
nslookup www.microsoft.com
```

The first command should return the IP address of www.contoso.com from DC1, and the second command should return the IP address of www.microsoft.com from a root hint server.

**NEW QUESTION 7**

SIMULATION - (Topic 4)

Task 6

You need to ensure that you can manage DC1 by using Windows Admin Center on SRV1. The required source files are located in a folder named \\dc1.contoso.com\install.

- A. Mastered
- B. Not Mastered

**Answer:** A

**Explanation:**

One possible solution to ensure that you can manage DC1 by using Windows Admin Center on SRV1 is to install Windows Admin Center on SRV1 and add DC1 as a managed server. Windows Admin Center is a web-based management tool that allows you to manage servers, clusters, Windows PCs, and Azure virtual machines (VMs) from a single interface. Here are the steps to install Windows Admin Center on SRV1 and add DC1 as a managed server:

? On SRV1, open a web browser and go to the folder named

\\dc1.contoso.com\install. Download the Windows Admin Center installer file (WindowsAdminCenter.msi) and save it to a local folder, such as C:\Temp.

? Run the Windows Admin Center installer file and follow the installation wizard. You

can choose to install Windows Admin Center as a desktop app or as a service. For more information on how to install Windows Admin Center, see Install Windows Admin Center.

? After the installation is complete, launch Windows Admin Center from the Start

menu or the desktop shortcut. If you installed Windows Admin Center as a service, you can access it from a web browser by using the URL https://localhost:6516 or https://<SRV1>:6516, where <SRV1> is the name or IP address of SRV1.

? On the Windows Admin Center dashboard, click Add to add a new connection.

Select Server as the connection type and enter the name or IP address of DC1 in the Server name field. Optionally, you can specify the display name, description, and tags for the connection. Click Submit to add DC1 as a managed server.

? On the Windows Admin Center dashboard, you should see DC1 listed under the

Servers section. Click on DC1 to open the server overview page. From here, you can manage various aspects of DC1, such as roles and features, certificates, devices, events, files, firewall, processes, registry, services, and more. For more information on how to use Windows Admin Center to manage servers, see Manage servers with Windows Admin Center.

Now, you can manage DC1 by using Windows Admin Center on SRV1. You can also add more servers or other types of connections to Windows Admin Center and manage them from the same interface

**NEW QUESTION 8**

- (Topic 3)

Note: This question is part of a series of questions that present the same scenario. Each question in the series contains a unique solution that might meet the stated goals. Some question sets might have more than one correct solution, while others might not have a correct solution.

After you answer a question in this section, you will NOT be able to return to it. As a result, these questions will not appear in the review screen.

Your network contains an Active Directory Domain Services (AD DS) domain named contoso.com.

You need to identify which server is the PDC emulator for the domain.

Solution: From Active Directory Domains and Trusts, you right-click Active Directory Domains and Trusts in the console tree, and then select Operations Master. Does this meet the goal?

- A. Yes
- B. No

**Answer:** B

**NEW QUESTION 9**

HOTSPOT - (Topic 3)



Your network contains an Active Directory Domain Services (AD DS) forest named contoso.com. The forest contains a child domain named east.contoso.com and the servers shown in the following table.

Name	Domain	Description
DC1	contoso.com	Has the schema master, infrastructure master, and domain naming master roles
DC2	east.contoso.com	Has the PDC emulator and RID master roles and is a global catalog server
Server1	contoso.com	Has the File Server, DFS Namespaces, and DFS Replication server roles

You need to create a folder for the Central Store to manage Group Policy template files for the entire forest. What should you name the folder, and on which server should you create the folder? To answer, select the appropriate options in the answer area. NOTE: Each correct selection is worth one point.

Answer Area

Name:

PolicyDefinitions

CentralDefinitions

PolicyDefinitions

TemplateDefinitions

These are the selections for Name:

Server:

Server1 only

DC1 only

DC2 only

Server1 only

DC1 and DC2 only

DC1, DC2, and Server1

- A. Mastered
- B. Not Mastered

Answer: A

Explanation:

Answer Area

Name:

PolicyDefinitions

CentralDefinitions

PolicyDefinitions

TemplateDefinitions

These are the selections for Name:

Server:

Server1 only

DC1 only

DC2 only

Server1 only

DC1 and DC2 only

DC1, DC2, and Server1

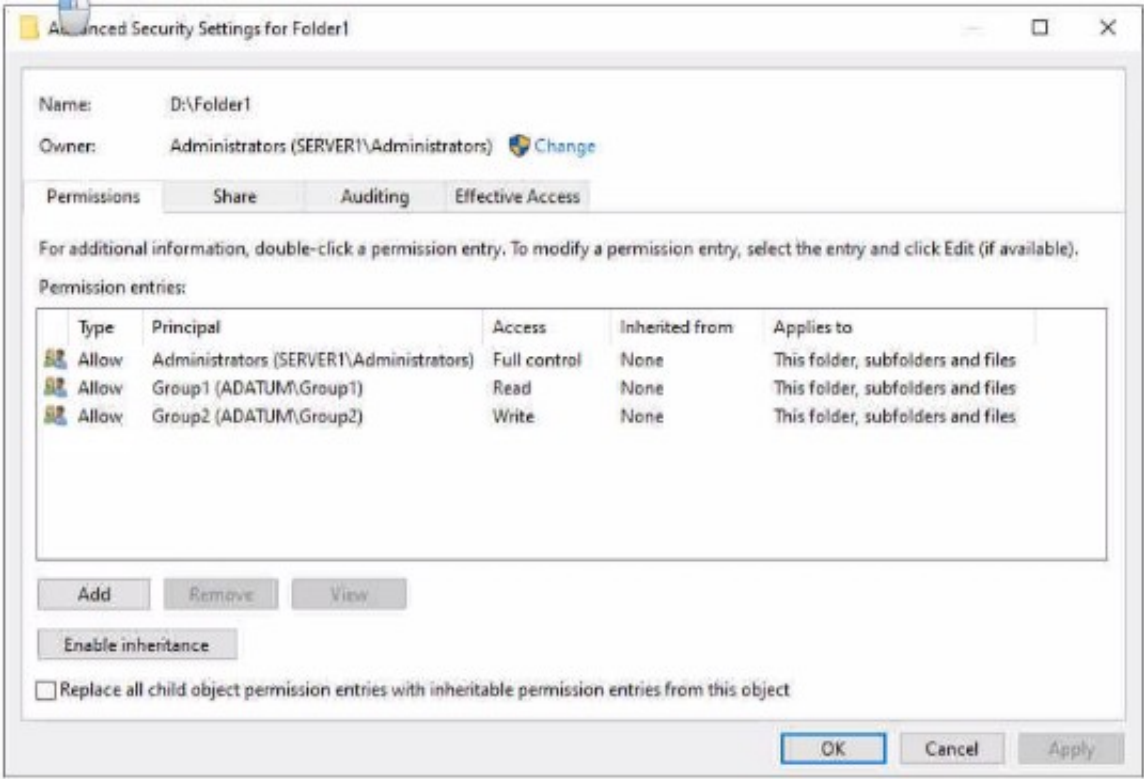
NEW QUESTION 10

HOTSPOT - (Topic 3)

Your network contains an Active Directory Domain Services (AD DS) domain named adatum.com The domain contains a server named Server1 and the users shown in the following table.

Name	Member of
User1	Group1
User2	Group2
User3	Group3

Server1 contains a folder named D:\Folder1. The advanced security settings for Folder 1 are configured as shown in the Permissions exhibit. (Click the Permissions tab.)



Folder1 is shared by using the following configurations

Group	Permission
Group1	Allow - Change
Group3	Allow - Full Control

Path : D:\Folder1  
Name : Share1  
ShareType : FileSystemDirectory  
FolderEnumerationMode : Unrestricted

Answer Area

Statements	Yes	No
User1 can read the files in Share1.	<input type="radio"/>	<input type="radio"/>
User3 can delete files in Share1.	<input type="radio"/>	<input type="radio"/>
If User2 connects to \\Server1.adatum.com from File Explorer,	<input type="radio"/>	<input type="radio"/>

- A. Mastered
- B. Not Mastered

Answer: A

Explanation:

Answer Area

Statements	Yes	No
User1 can read the files in Share1.	<input checked="" type="radio"/>	<input type="radio"/>
User3 can delete files in Share1.	<input checked="" type="radio"/>	<input type="radio"/>
If User2 connects to \\Server1.adatum.com from File Explorer,	<input type="radio"/>	<input checked="" type="radio"/>

NEW QUESTION 10

HOTSPOT - (Topic 3)

Your on-premises network contains an Active Directory Domain Services (AD DS) domain.

The domain contains the servers shown in the following table.

The domain controllers do NOT have internet connectivity.

You plan to implement Azure AD Password Protection for the domain.

You need to deploy Azure AD Password Protection agents. The solution must meet the following requirements:

- All Azure AD Password Protection policies must be enforced.
- Agent updates must be applied automatically.
- Administrative effort must be minimized.

What should you do? To answer select the appropriate options in the answer area. NOTE: Each correct selection is worth one point.

Answer Area

Install the Azure AD Password Protection agent on:

DC1 and DC2 only
DC1 only
DC1 and DC2 only
DC1, DC2, and RODC1

Install the Azure AD Password Protection Proxy on:

Server1
DC1
DC2
RODC1
Server1
Server2

- A. Mastered
- B. Not Mastered

Answer: A

Explanation:

Answer Area

Install the Azure AD Password Protection agent on: DC1 and DC2 only

Install the Azure AD Password Protection Proxy on: Server1

NEW QUESTION 14

- (Topic 3)

Your network contains an Active Directory Domain Services (AD DS) domain named contoso.com. The domain contains two servers named Server1 and Server2. Server1 contains a disk named Disk2. Disk2 contains a folder named UserData. UserData is shared to the Domain Users group. Disk2 is configured for deduplication. Server1 is protected by using Azure Backup.

Server1 fails.

You connect Disk2 to Server2.

You need to ensure that you can access all the files on Disk2 as quickly as possible. What should you do?

- A. Create a storage pool.
- B. Restore files from Azure Backup.
- C. Install the File Server Resource Manager server role.
- D. Install the Data Deduplication server role.

Answer: C

Explanation:

Reference:

<https://docs.microsoft.com/en-us/windows-server/storage/data-deduplication/overview>

NEW QUESTION 17

- (Topic 3)

Note: This question is part of a series of questions that present the same scenario. Each question in the series contains a unique solution that might meet the stated goals. Some question sets might have more than one correct solution, while others might not have a correct solution.

After you answer a question in this section, you will NOT be able to return to it. As a result, these questions will not appear in the review screen.

Your network contains an Active Directory Domain Services (AD DS) forest. The forest contains three Active Directory sites named Site1, Site2, and Site3. Each site contains two domain controllers. The sites are connected by using DEFAULTIPSITELINK.

You open a new branch office that contains only client computers.

You need to ensure that the client computers in the new office are primarily authenticated by the domain controllers in Site1.

Solution: You create an organization unit (OU) that contains the client computers in the branch office. You configure the Try Next Closest Site Group Policy Object (GPO) setting in a GPO that is linked to the new OU.

Does this meet the goal?

- A. Yes
- B. No

Answer: B

NEW QUESTION 21

- (Topic 3)

You have an Active Directory Domain Services (AD DS) domain. The domain contains three servers named Server 1, Server2, and Server3 that run Windows Server.

You sign in to Server1 by using a domain account and start a remote PowerShell session to Server2. From the remote PowerShell session, you attempt to access a resource on Server3. but access to the resource is denied.

You need to ensure that your credentials are passed from Server1 to Server3. The solution must minimize administrative effort. What should you do?

- A. Configure Kerberos constrained delegation.
- B. Configure Just Enough Administration (JEA).
- C. Configure selective authentication for the domain.
- D. Disable the Enforce user logon restrictions policy setting for the domain.

Answer: A

NEW QUESTION 22

HOTSPOT - (Topic 3)

You have an Azure subscription that contains a virtual network named VNet1. Vnet1 contains three subnets named Subnet1, Subnet2, and Subnet3. You deploy a virtual machine that has the following settings:

- Name: VM1
- Subnet: Subnet2
- Network interface name: NIC1
- Operating system: Windows Server 2022

You need to ensure that VM1 can route traffic between Subnet1 and Subnet3. The solution must minimize administrative effort.

What should you do? To answer, select the appropriate options in the answer area. NOTE: Each correct selection is worth one point.

Answer Area

From the Azure portal:

Associate a routing table with Subnet2.

Associate a routing table with Subnet2.

Attach two additional interfaces to VM1.

Enable IP forwarding for NIC1.

On VM1:

Install and configure a network controller.

Install and configure a network controller.

Install and configure Routing and Remote Access.

Run the route add command.

- A. Mastered  
B. Not Mastered

Answer: A

Explanation:

Answer Area

From the Azure portal:

Associate a routing table with Subnet2.

Associate a routing table with Subnet2.

Attach two additional interfaces to VM1.

Enable IP forwarding for NIC1.

On VM1:

Install and configure a network controller.

Install and configure a network controller.

Install and configure Routing and Remote Access.

Run the route add command.

NEW QUESTION 27

DRAG DROP - (Topic 3)

Your network contains a single domain Active Directory Domain Services (AD DS) forest named contoso.com. The forest contains a single Active Directory site. You plan to deploy a read only domain controller (RODC) to a new datacenter on a server named Server1. A user named User1 is a member of the local Administrators group on Server1.

You need to recommend a deployment plan that meets the following requirements:

- ? Ensures that a user named User1 can perform the RODC installation on Server1
- ? Ensures that you can control the AD DS replication schedule to the Server1
- ? Ensures that Server1 is in a new site named RemoteSite1
- ? Uses the principle of least privilege

Which three actions should you recommend performing in sequence? To answer, move the appropriate actions from the list of actions to the answer area and arrange them in the correct order.

Actions

Answer Area

Instruct User1 to run the Active Directory Domain Services installation Wizard on Server1.

Create a site and a subnet.

Create a site link.

Pre-create an RODC account.

Add User1 to the Contoso\Administrators group.



- A. Mastered  
B. Not Mastered

Answer: A

Explanation:

Box 1.

We need to create a site and subnet for the remote site. The new site will be added to the Default IP Site Link so we don't need to create a new site link. You



configure the replication schedule on the site link.

Box 2.

When we pre-create an RODC account, we can specify who is allowed to attach the server to the prestaged account. This means that the User1 does not need to be added to the Domain Admins group.

Box3.

User1 can connect the RODC to the prestaged account by running the AD DS installation wizard.

### NEW QUESTION 30

- (Topic 3)

Your network contains an on-premises Active Directory Domain Services (AD DS) domain named contoso.com. The domain contains three servers that run Windows Server and have the Hyper-V server role installed. Each server has a Switch Embedded Teaming (SET) team.

You need to verify that Remote Direct Memory Access (RDMA) and required Windows Server settings are configured properly on each server to support a failover cluster.

What should you use?

- A. the validate-DCB cmdlet
- B. Server Manager
- C. the Get-NetAdapter cmdlet
- D. Failover Cluster Manager

**Answer:** A

### NEW QUESTION 35

HOTSPOT - (Topic 3)

Your company has offices in Boston and Montreal. The offices are connected by using a 10-Mbps WAN link that is often saturated The office in Boston contains the following:

- An Active Directory Domain Services (AD DS) domain controller named DC1.
  - A server named Server1 that runs Windows Server and has the File Server role installed
- The office in Montreal contains 20 client computers that run Windows 10 Montreal does NOT have any servers.

The company plans to deploy a new line of business (LOB) application to all the client computers. The installation source files for the application are in \\Server\Apps.

Answer Area

On Server1:

Enable BranchCache in hosted cache mode.  
 Enable BranchCache in Distributed Cache mode.  
 Install the BranchCache for network files role service.

On the client computers:

Enable BranchCache in hosted cache mode.  
 Enable BranchCache in Distributed Cache mode.  
 Install the BranchCache for network files role service.

- A. Mastered
- B. Not Mastered

**Answer:** A

**Explanation:**

Answer Area

On Server1:

Enable BranchCache in hosted cache mode.  
 Enable BranchCache in Distributed Cache mode.  
 Install the BranchCache for network files role service.

On the client computers:

Enable BranchCache in hosted cache mode.  
 Enable BranchCache in Distributed Cache mode.  
 Install the BranchCache for network files role service.

### NEW QUESTION 36

- (Topic 3)

You have an Active Directory domain that contains a file server named Server1. Server1 runs Windows Server and includes the file shares shown in the following table.

Share Name	Path
Users	D:\Users
Accounts	D:\Dept\Accounts
Marketing	D:\Dept\Marketing
CustomerService	D:\Dept\CustomerService

When users login to the network they receive the following network drive mappings.

- H: maps to Wserver1\users\%UserName%
- G: maps to \\server1\%Department%

You need to limit the amount of space consumed by user's on Server!. The solution must meet the following requirements:

- Prevent users using more than 5GB of space on their H: drive
- Prevent Accounts department users from using more than 10GB of space on the G: drive
- Prevent Marketing department users from using more than 15GB of space on the G: drive
- Prevent Customer Service department users from using more than 2GB of space on the G: drive
- Minimize administrative effort What should you use?

- A. File Server Resource Manager (FSRM) quotas
- B. Storage tiering
- C. NTFS Disk quotas
- D. Group Policy Preferences

Answer: A

NEW QUESTION 41

- (Topic 3)

Your network contains an Active Directory Domain Services (AD DS) forest. The forest contains three domains. Each domain contains 10 domain controllers.

You plan to store a DNS zone in a custom Active Directory partition.

You need to create the Active Directory partition for the zone. The partition must replicate to only four of the domain controllers.

What should you use?

- A. DNS Manager
- B. New-ADObject
- C. dnscnd.exe
- D. Windows Admin Center

Answer: D

NEW QUESTION 44

DRAG DROP - (Topic 3)

Your network contains two Active Directory Domain Services (AD DS) forests named contoso.com and fabrikam.com. Contoso.com contains three child domains named amer.contoso.com, apac.contoso.com, and emea.contoso.com. Fabrikam.com contains a child domain named apac.fabrikam.com. A bidirectional forest trust exists between contoso.com and fabrikam.com.

You need to provide users in the contoso.com forest with access to the resources in the fabrikam.com forest. The solution must meet the following requirements:

- Users in contoso.com must only be added directly to groups in the contoso.com forest.
- Permissions to access the resources in fabrikam.com must only be granted directly to groups in the fabrikam.com forest.
- The number of groups must be minimized.

Which type of groups should you use to organize the users and to assign permissions? To answer, drag the appropriate group types to the correct requirements.

Each group type may be used once, more than once, or not at all. You may need to drag the split bar between panes or scroll to view content.

NOTE: Each correct selection is worth one point.

Group types	Answer Area
Domain global	Organize users: <input type="text"/>
Domain local	Assign permissions: <input type="text"/>
Universal	

- A. Mastered
- B. Not Mastered

Answer: A

Explanation:

Group types	Answer Area
Domain global	Organize users: <input type="text" value="Domain local"/>
Domain local	Assign permissions: <input type="text" value="Universal"/>
Universal	

NEW QUESTION 45

- (Topic 3)

You have a server named Host1 that has the Hyper-V server role installed. Host1 hosts a virtual machine named VM1.

You have a management server named Server1 that runs Windows Server. You remotely manage Host1 from Server1 by using Hyper-V Manager.

You need to ensure that you can access a USB hard drive connected to Server1 when you connect to VM1 by using Virtual Machine Connection.

Which two actions should you perform? Each correct answer presents part of the solution. NOTE: Each correct selection is worth one point.

- A. From the Hyper-V Settings of Host1, select Allow enhanced session mode
- B. From Disk Management on Host1, attach a virtual hard disk.
- C. From Virtual Machine Connection, switch to a basic session.
- D. From Virtual Machine Connection select Show Options and then select the USB hard drive.
- E. From Disk Management on Host1, select Rescan Disks





What should you include in the solution?

- A. Microsoft Application Request Routing (ARR) Version 2
- B. Web Application Proxy
- C. Azure Relay
- D. Azure Application Gateway

**Answer:** C

#### NEW QUESTION 60

- (Topic 3)

Your network contains an Active Directory Domain Services (AD DS) domain named conioso.com.

You need to identify which server is the PDC emulator for the domain.

Solution: from Active Directory Users and Computers, you right-click contoso.com in the console tree, and then select Operations Master

Does this meet the goal?

- A. Yes
- B. No

**Answer:** A

#### NEW QUESTION 61

- (Topic 3)

You have an Azure subscription that contains the following resources:

- An Azure Log Analytics workspace
- An Azure Automation account
- Azure Arc.

You have an on-premises server named Server1 that is onboarded to Azure Arc You need to manage Microsoft updates on Server1 by using Azure Arc

Which two actions should you perform? Each correct answer presents part of the solution. NOTE: Each correct selection is worth one point

- A. Add Microsoft Sentinel to the Log Analytics workspace
- B. On Server1, install the Azure Monitor agent
- C. From the Automation account, enable Update Management for Server1.
- D. From the Virtual machines data source of the Log Analytics workspace, connect Server1.

**Answer:** BC

#### Explanation:

Reference:

<https://docs.microsoft.com/en-us/azure/cloud-adoption-framework/manage/hybrid/server/best-practices/arc-update-management>

#### NEW QUESTION 62

HOTSPOT - (Topic 3)

Your company has a main office and 10 branch offices that are connected by using WAN links. The network contains an Active Directory domain.

All users have laptops and regularly travel between offices. You plan to implement BranchCache in the branch offices.



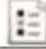
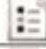
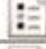
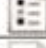
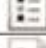
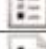
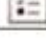
In each branch office, you install a server that runs Windows Server and the BranchCache feature. You register the servers in Active Directory.

You need to configure the laptops to use the local BranchCache server automatically. The solution must minimize administrative effort.

Which two Group Policy settings should you configure? To answer, select the settings in the answer area.

NOTE: Each correct selection is worth one point.

#### Answer Area

Setting	State
 Turn on BranchCache	Not configured
 Set BranchCache Distributed Cache mode	Not configured
 Set BranchCache Hosted Cache mode	Not configured
 Enable Automatic Hosted Cache Discovery by Service Connection...	Not configured
 Configure Hosted Cache Servers	Not configured
 Configure BranchCache for network files	Not configured
 Set percentage of disk space used for client computer cache	Not configured
 Set age for segments in the data cache	Not configured
 Configure Client BranchCache Version Support	Not configured

- A. Mastered
- B. Not Mastered

**Answer:** A

#### Explanation:

--> Turn on BranchCache

--> Enable Automatic Hosted Cache Discovery by Service Connection ...



#### NEW QUESTION 67

- (Topic 3)

You have an on-premises network that is connected to an Azure virtual network by using a Site-to-Site VPN. Each network contains a subnet that has the same IP address space. The on-premises subnet contains a virtual machine.

You plan to migrate the virtual machine to the Azure subnet.

You need to migrate the on premises virtual machine to Azure without modifying the IP address. The solution must minim administrative effort.

What should you implement before you perform the migration?

- A. Azure Extended Network
- B. Azure Virtual Network NAT
- C. Azure Application Gateway
- D. Azure virtual network peering

**Answer:** A

#### Explanation:

Reference:

<https://docs.microsoft.com/en-us/windows-server/manage/windows-admin-center/azure/azure-extended-network>

#### NEW QUESTION 68

- (Topic 3)

Your network contains an Active Directory Domain Services (AD DS) domain.

You have a Group Policy Object (GPO) named GPO1 that contains Group Policy preferences.

You plan to link GPO1 to the domain.

You need to ensure that the preference in GPO1 apply only to domain member servers and NOT to domain controllers or client computers. All the other Group Policy settings in GPO1 must apply to all the computers. The solution must minimize administrative effort.

Which type of item level targeting should you use?

- A. Domain
- B. Operating System
- C. Security Group
- D. Environment Variable

**Answer:** B

#### Explanation:

Reference:

[https://docs.microsoft.com/en-us/previous-versions/windows/it-pro/windows-server-2012-r2-and-2012/dn789189\(v=ws.11\)#operating-system-targeting](https://docs.microsoft.com/en-us/previous-versions/windows/it-pro/windows-server-2012-r2-and-2012/dn789189(v=ws.11)#operating-system-targeting)

#### NEW QUESTION 69

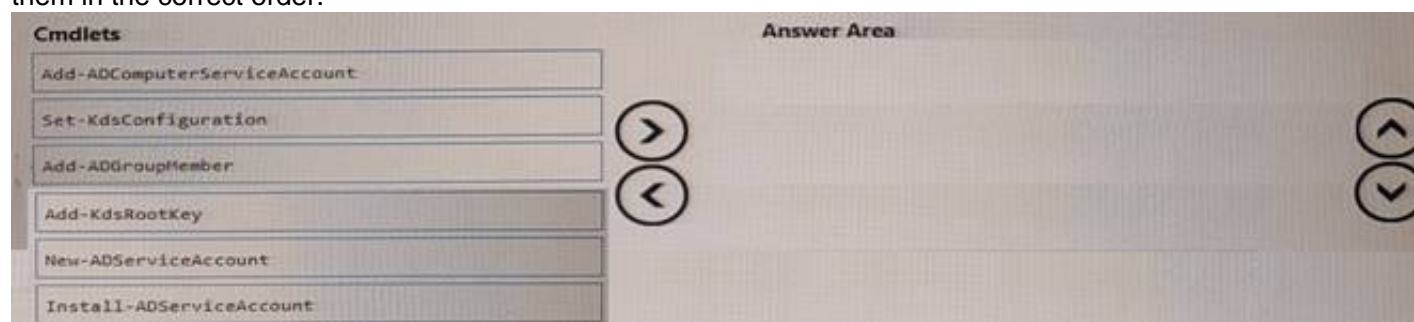
DRAG DROP - (Topic 3)

You deploy a single-domain Active Directory Domain Services (AD DS) forest named contoso.com.

You deploy a server to the domain and configure the server to run a service.

You need to ensure that the service can use a group managed service account (gMSA) to authenticate.

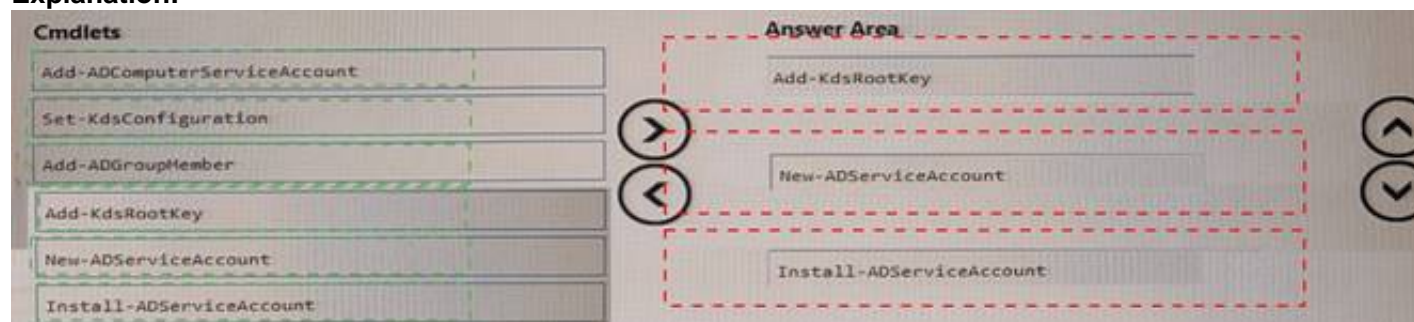
Which three PowerShell cmdlets should you run in sequence? To answer, move the appropriate cmdlets from the list of cmdlets to the answer area and arrange them in the correct order.



- A. Mastered
- B. Not Mastered

**Answer:** A

#### Explanation:



#### NEW QUESTION 72

- (Topic 3)

Your network contains a multi-site Active Directory Domain Services (AD DS) forest. Each Active Directory site is connected by using manually configured site links and automatically generated connections.

You need to minimize the convergence time for changes to Active Directory. What should you do?

- A. For each site link, modify the options attribute.
- B. For each site link, modify the site link costs.
- C. For each site link, modify the replication schedule.
- D. Create a site link bridge that contains all the site links.

Answer: C

Explanation:

Reference:  
<https://docs.microsoft.com/en-us/windows-server/identity/ad-ds/plan/determining-the-interval>

NEW QUESTION 73

DRAG DROP - (Topic 3)

You have an Azure subscription. The subscription contains a virtual machine named VM1 that runs Windows Server. VM1 contains a 128-GB operating system disk.

You need to increase the size of volume C on VM1 to 250 GB.

Which four actions should you perform in sequence? To answer, move the appropriate actions from the list of actions to the answer area and arrange them in the correct order.

Actions

Resize VM1.

Redeploy VM1.

Stop VM1.

Resize the operating system disk.

Start VM1.

Resize volume C.

>

<

Answer Area

↑

↓

- A. Mastered
- B. Not Mastered

Answer: A

Explanation:

Actions

Resize VM1.

Redeploy VM1.

Stop VM1.

Resize the operating system disk.

Start VM1.

Resize volume C.

>

<

Answer Area

Stop VM1.

Resize the operating system disk.

Start VM1.

Resize volume C.

↑

↓

NEW QUESTION 75

- (Topic 3)

Your network contains an Active Directory Domain Services (AD DS) forest named contoso.com. The root domain contains the domain controllers shown in the following table.

Name	FSMO role
DC1	Domain naming master
DC2	RID master
DC3	PDC emulator
DC4	Schema master
DC5	Infrastructure master

A failure of which domain controller will prevent you from creating application partitions?

- A. DC1
- B. DC2
- C. DC3
- D. DC4
- E. DC5

Answer: A

Explanation:

Reference:  
<https://docs.microsoft.com/en-us/troubleshoot/windows-server/identity/fsmo-roles>

NEW QUESTION 79

DRAG DROP - (Topic 3)

You have two on-premises servers named Server1 and Servet2 that run Windows Server.  
You have an Azure Storage account named storage1 that contains a file share named share'. Server1 syncs with share1 by using Azure File Sync  
You need to configure Server2 to sync with share1.  
Which three actions should you perform in sequence? To answer, move the appropriate actions from the list of actions to the answer area and arrange them in the correct order.

Actions

Register Server2 with the Storage Sync Service.

Add a Storage Sync Service to the Azure subscription.

On Server2, install the Azure File Sync agent.

Add a cloud endpoint to the sync group.

Add a server endpoint to the sync group.

Answer Area

- A. Mastered
- B. Not Mastered

Answer: A

Explanation:

Actions

Register Server2 with the Storage Sync Service.

Add a Storage Sync Service to the Azure subscription.

On Server2, install the Azure File Sync agent.

Add a cloud endpoint to the sync group.

Add a server endpoint to the sync group.

Answer Area

On Server2, install the Azure File Sync agent.

Register Server2 with the Storage Sync Service.

Add a server endpoint to the sync group.

NEW QUESTION 81  
- (Topic 3)

Note: This question is part of a series of questions that present the same scenario. Each question in the series contains a unique solution that might meet the stated goals. Some question sets might have more than one correct solution, while others might not have a correct solution. After you answer a question in this section, you will NOT be able to return to it. As a result, these questions will not appear in the review screen.  
You are planning the deployment of DNS to a new network.  
You have three internal DNS servers as shown in the following table.

Name	Location	IP address	Local DNS zone
Server1	Montreal	10.0.1.10	contoso.local
Server2	Toronto	10.0.2.10	east.contoso.local
Server3	Seattle	10.0.3.10	west.contoso.local

The contoso.local zone contains zone delegations for east.contoso.local and west.contoso.local. All the DNS servers use root hints.  
You need to ensure that all the DNS servers can resolve the names of all the internal namespaces and internet hosts.  
Solution: On Server2, you create a conditional forwarder for contoso.local and west.contoso.local. On Server3, you create a conditional forwarder for contoso.local and east.contoso.local.  
Does this meet the goal?

- A. Yes
- B. No

Answer: B

NEW QUESTION 83  
- (Topic 3)

Your network contains an Active Directory Domain Services (AD DS) domain. The domain contains the domain controllers shown in the following table.

Name	Description
DC1	PDC emulator, RID master, and global catalog server
DC2	Infrastructure master and domain naming master
DC3	Schema master
RODC1	Read-only domain controller (RODC)

You need to ensure that if an attacker compromises the computer account of RODC1, the attacker cannot view the Employee-Number AD DS attribute. Which partition should you modify?

- A. configuration
- B. global catalog
- C. domain
- D. schema

Answer: D

NEW QUESTION 86  
- (Topic 3)



Your network contains an Active Directory Domain Services (AD DS) domain. The domain contains the offices shown in the following table.

Location	Number of VPN servers	Number of remote users
Boston	2	30
Dallas	2	50
Seattle	4	100

You need to deploy a Network Policy Server (NPS) named NPS1 to enforce network access policies for all remote connections. What is the minimum number of RADIUS clients that you should add to NPS1?

- A. 1
- B. 3
- C. 8
- D. 180
- E. 188

**Answer:** C

#### NEW QUESTION 91

- (Topic 3)

Your network contains an on -premises Active Directory Domain Services (AD DS) domain named contoso.com The domain contains the objects shown in the following table.

Name	Type
User1	User
Group1	Universal security group
Group2	Domain local security group
Computer1	Computer

You plan to sync contoso.com with an Azure Active Directory (Azure AD) tenant by using Azure AD Connect You need to ensure that all the objects can be used in Conditional Access policies What should you do?

- A. Change the scope of Group2 to Universal
- B. Clear the Configure device writeback option.
- C. Change the scope o' Group1 and Group2 to Global
- D. Select the Configure Hybrid Azure AD join option.

**Answer:** D

#### Explanation:

Hybrid Azure AD join needs to be configured to enable Computer1 to be used in Conditional Access Policies. Synchronized users, universal groups and domain local groups can be used in Conditional Access Policies.

#### NEW QUESTION 92

- (Topic 3)

Your network contains an Active Directory forest. The forest contains two domains named contoso.com and east.contoso.com and the servers shown in the following table.

Name	Domain	Configuration
DC1	contoso.com	Domain controller
Server1	contoso.com	Member server
DC2	east.contoso.com	Domain controller
Server2	east.contoso.com	Member server

Contoso.com contains a user named User1.

You add User1 to the built-in Backup Operators group in contoso.com. Which servers can User1 back up?

- A. DC1 only
- B. Server1 only
- C. DC1 and DC2 only
- D. DC1 and Server1 only
- E. DC1, DC2, Server1, and Server2

**Answer:** A

#### NEW QUESTION 94

- (Topic 3)

You have five file servers that run Windows Server.

You need to block users from uploading video files that have the .mov extension to shared folders on the file servers. All other types of files must be allowed. The solution must minimize administrative effort.

What should you create?

- A. a Dynamic Access Control central access policy
- B. a file screen



- C. a Dynamic Access Control central access rule
- D. a data loss prevention (DLP) policy

Answer: B

Explanation:

Reference:  
<https://docs.microsoft.com/en-us/windows-server/storage/fsrm/file-screening-management>

NEW QUESTION 98

DRAG DROP - (Topic 3)

You have an on-premises server named Server 1 that runs Windows Server. Server 1 contains a file share named Share 1. You have an Azure subscription. You perform the following actions:

- Deploy Azure File Sync
- Install the Azure File Sync agent on Server1.
- Register Server1 with Azure File Sync

You need to ensure that you can add Share1 as an Azure File Sync server endpoint. Which three actions should you perform in sequence? To answer, move the appropriate actions from the list of actions to the answer area and arrange them in the correct order.

Actions

Deploy the Azure Connected Machine agent.

Deploy an Azure VPN gateway.

Create a private endpoint.

Create an Azure Storage account.

Create an Azure file share.

Create a sync group.

Answer Area

- A. Mastered
- B. Not Mastered

Answer: A

Explanation:

Actions

Deploy the Azure Connected Machine agent.

Deploy an Azure VPN gateway.

Create a private endpoint.

Create an Azure Storage account.

Create an Azure file share.

Create a sync group.

Answer Area

Create an Azure Storage account.

Create an Azure file share.

Create a sync group.

NEW QUESTION 102

HOTSPOT - (Topic 3)

You have on-premises servers that run Windows Server as shown in the following table.

Name	Local content
Server1	D:\Folder1\File1.docx
Server2	D:\Data1\File3.docx

You have an Azure file share named share1 that stores two files named File2.docx and File3.docx. You create an Azure File Sync sync group that includes the following endpoints:

- ? share
- ? D:\Folder1 on Server1
- ? D:\Data1 on Server2

For each of the following statements, select Yes if the statement is true. Otherwise, select No.  
NOTE: Each correct selection is worth one point.

Statements	Yes	No
You can create a file named File2.docx in D:\Folder1 on Server1.	<input type="checkbox"/>	<input type="checkbox"/>
You can create a file named File1.docx in D:\Data1 on Server2.	<input type="checkbox"/>	<input type="checkbox"/>
File3.docx will sync to Server1.	<input type="checkbox"/>	<input type="checkbox"/>

- A. Mastered
- B. Not Mastered

Answer: A

Explanation:

Statements	Yes	No
You can create a file named File2.docx in D:\Folder1 on Server1.	<input checked="" type="checkbox"/>	<input type="checkbox"/>
You can create a file named File1.docx in D:\Data1 on Server2.	<input checked="" type="checkbox"/>	<input type="checkbox"/>
File3.docx will sync to Server1.	<input type="checkbox"/>	<input checked="" type="checkbox"/>

NEW QUESTION 103

HOTSPOT - (Topic 3)

You have a Windows Server 2022 container host named Host1 and a container registry that contains the container images shown in the following table.

Name	Container base image OS version
Image1	Windows Server 2022
Image2	Windows Server 2019

You need to run the containers on Host1

Which isolation mode can you use for each image? To answer, select the appropriate options in the answer area.

NOTE: Each correct selection is worth one point.

Answer Area

Image1:

Hyper-V isolation or process isolation

Hyper-V isolation only

Process isolation only

Hyper-V isolation or process isolation

Image2:

Hyper-V isolation only

Hyper-V isolation only

Process isolation only

Hyper-V isolation or process isolation

Answer Area

Answer:

Image1:

Hyper-V isolation or process isolation

Hyper-V isolation only

Process isolation only

Hyper-V isolation or process isolation

Image2:

Hyper-V isolation only

Hyper-V isolation only

Process isolation only

Hyper-V isolation or process isolation

- A. Mastered
- B. Not Mastered

Answer: A

NEW QUESTION 107

- (Topic 3)

Your network contains an Active Directory Domain Services (AD DS) domain named contoso.com.

You need to identify which server is the PDC emulator for the domain. Solution: From a command prompt, you run netdom.exe query fsmo. Does this meet the goal?

- A. Yes
- B. No

Answer: A

Explanation:

Reference:  
<https://activedirectorypro.com/how-to-check-fsmo-roles/>

NEW QUESTION 111

HOTSPOT - (Topic 3)

You have an Azure Active Directory Domain Services (Azure AD DS) domain. You create a new user named Admin1.

You need Admin1 to deploy custom Group Policy settings to all the computers in the domain. The solution must use the principle of least privilege. What should you include in the solution? To answer, select the appropriate options in the answer area.  
NOTE: Each correct selection is worth one point

Add Admin1 to the following group:

AAD DC Administrators
Domain Admins
Group Policy Creator Owners

Instruct Admin1 to apply the custom Group Policy settings by:

Creating a new Group Policy Object (GPO) and linking the GPO to the domain
Modifying AADDC Computers GPO
Modifying the default domain GPO

- A. Mastered
- B. Not Mastered

Answer: A

Explanation:

NEW QUESTION 112

HOTSPOT - (Topic 3)

You have a Group Policy Object (GPO) named GPO1 that contains user settings only. You plan to apply GPO1 to a global security group named Group1. You link GP01 to the domain, and you remove all the permissions granted to the Authenticated Users group. You need to configure permissions for GP01 to meet the following requirements.

- GPO1 must apply only to the users in Group 1.
- The solution must use the principle of least privilege

Answer Area

Group1:

Apply group policy and Read
Apply group policy only
Read only

Domain Computers:

Apply group policy and Read
Apply group policy only
Read only

- A. Mastered
- B. Not Mastered

Answer: A

Explanation:

Answer Area

Group1:

Apply group policy and Read
Apply group policy only
Read only

Domain Computers:

Apply group policy and Read
Apply group policy only
Read only

NEW QUESTION 114

HOTSPOT - (Topic 3)

Your network contains an Active Directory Domain Services (AD DS) domain named contoso.com. The domain contains the VPN servers shown in the following table.

Name	IP address
VPN1	172.16.0.254
VPN2	131.10.15.254
VPN3	10.10.0.254

You have a server named NPS1 that has Network Policy Server (NPS) installed. NPS1 has the following RADIUS clients:

Name	: NPSclient1
Address	: 172.16.0.254
AuthAttributeRequired	: False
SharedSecret	: Pa55w.rd
VendorName	: RADIUS Standard
Enabled	: False
Name	: NPSclient2
Address	: 131.10.15.254
AuthAttributeRequired	: False
SharedSecret	: Pa55w.rd
VendorName	: RADIUS Standard
Enabled	: True
Name	: NPSclient3
Address	: 172.16.1.254
AuthAttributeRequired	: False
SharedSecret	: Pa55w.rd
VendorName	: RADIUS Standard
Enabled	: True

VPN1, VPN2, and VPN3 use NPS1 for RADIUS authentication. All the users in contoso.com are allowed to establish VPN connections. For each of the following statements, select Yes If the statement is true. Otherwise, select No. NOTE: Each correct selection is worth one point.

Answer Area

Statements	Yes	No
The contoso.com users can authenticate successfully when they establish a VPN connection to VPN1.	<input type="radio"/>	<input type="radio"/>
The contoso.com users can authenticate successfully when they establish a VPN connection to VPN2.	<input type="radio"/>	<input type="radio"/>
The contoso.com users can authenticate successfully when they establish a VPN connection to VPN3.	<input type="radio"/>	<input type="radio"/>

- A. Mastered
- B. Not Mastered

Answer: A

Explanation:

Answer Area

Statements	Yes	No
The contoso.com users can authenticate successfully when they establish a VPN connection to VPN1.	<input type="radio"/>	<input checked="" type="radio"/>
The contoso.com users can authenticate successfully when they establish a VPN connection to VPN2.	<input checked="" type="radio"/>	<input type="radio"/>
The contoso.com users can authenticate successfully when they establish a VPN connection to VPN3.	<input type="radio"/>	<input checked="" type="radio"/>

NEW QUESTION 118

- (Topic 3)

Your network contains an Active Domain Services (AD DS) forest. The forest contains three domains. Each domain contains 10 domain controllers.

You plan to store a DNS zone in a custom active Directory partition.

You need to create the Active Directory partition for the zone. The partition replicate to only four of the domain controllers.

What should you use?

- A. Active Directory Sites and Services
- B. Active Directory Administrator Center
- C. dnscmd.exe
- D. DNS Manager

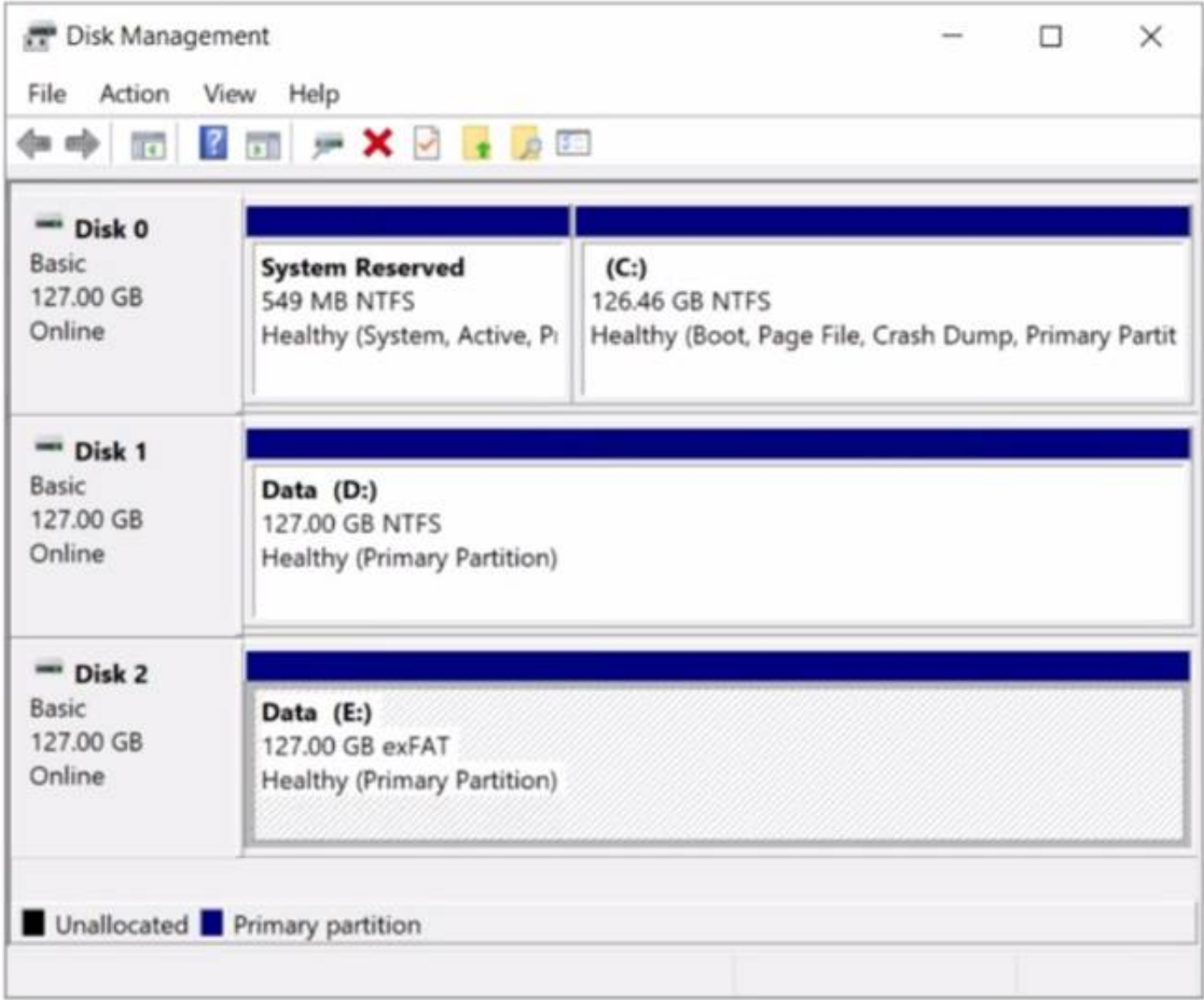
Answer: B

NEW QUESTION 122

- (Topic 3)

You have a server named Server1 that runs Windows Server. The disks on Server1 are configured as shown in the following exhibit.





You need to convert volume E to ReFS. The solution must meet the following requirements:

- Preserve the existing data on volume E.
- Minimize administrative effort. What should you do first?

- A. Take Disk 2 offline.
- B. Back up the data on volume E.
- C. Convert Disk 2 to a dynamic disk.
- D. Runconvert.exe.

Answer: B

NEW QUESTION 126

HOTSPOT - (Topic 3)

You have a server named Server1 that runs Windows Server Server1 has a just-a-bunch- of-disks (JBOD) enclosure attached. You plan to create a storage pool on Server1 and a virtual disk that will use a mirror layout. You are considering whether to use a two-way or a three-way mirror layout. What is the minimum number of disks required for each type of minor layout? To answer, select the appropriate options in the answer area. NOTE: Each correct selection is worth one point.

Answer Area

Two-way mirror: 

1

2

3

4

5

6

Three-way mirror: 

1

2

3

4

5

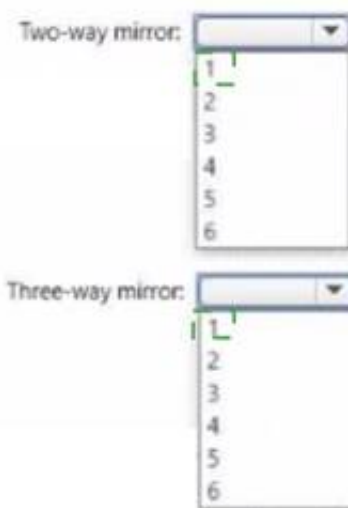
6

- A. Mastered
- B. Not Mastered

Answer: A

Explanation:

Answer Area



**NEW QUESTION 130**

- (Topic 3)

You plan to deploy a containerized application that requires .NET Core.

You need to create a container image for the application. The image must be as small as possible.

Which base image should you use?

- A. Nano Server
- B. Server Cote
- C. Windows Server
- D. Windows

**Answer:** A

**Explanation:**

Reference:

<https://techcommunity.microsoft.com/t5/containers/nano-server-x-server-core-x-server-which-base-image-is-the-right/ba-p/2835785>

**NEW QUESTION 135**

- (Topic 3)

You have an on premises Active Directory Domain Services (AD DS) domain that syncs with an Azure Active Directory (Azure AD) tenant. The domain contains two servers named Server1 and Server2.

A user named Admin1 is a member of the local Administrators group on Server1 and Server2.

You plan to manage Server1 and Server2 by using Azure Arc. Azure Arc objects will be added to a resource group named RG1.

You need to ensure that Admin1 can configure Server1 and Server2 to be managed by using Azure Arc.

What should you do first?

- A. Mastered
- B. Not Mastered

**Answer:** A

**Explanation:**

Reference:

<https://docs.microsoft.com/en-us/azure/azure-arc/servers/onboard-service-principal>

**NEW QUESTION 138**

- (Topic 3)

Your network contains an Active Directory Domain Services (AD DS) forest. The forest contains three Active Directory sites named Site1, Site2, and Site3. Each site contains two domain controllers. The sites are connected by using DEFAULTIPSITELINK.

You open a new branch office that contains only client computers.

You need to ensure that the client computers in the new office are primarily authenticated by the domain controllers in Site1.

Solution: You configure the Try Next Closest Site Group Policy Object (GPO) setting in a GPO that is linked to Site1.

Does this meet the goal?

- A. Yes
- B. No

**Answer:** B

**NEW QUESTION 143**

- (Topic 3)

You have an Active Directory Domain Services (AD DS) domain. The domain contains a member server named Server1 that runs Windows Server.

You need to ensure that you can manage password policies for the domain from Serve1. Which command should you run first on Server1?

- A. Install-Windows Feature RSAT-AO-PowerShell
- B. Install-Windows Feature 6PHC
- C. Install-Windows Feature RSAT-AD-Tool\$
- D. Install-windows Feature RSAT-AWIMS

**Answer:** C

NEW QUESTION 145

HOTSPOT - (Topic 3)

You have an Azure subscription that contains the storage accounts shown in the following table.

Name	Location	Kind	Container	File share
storage1	East US	StorageV2	cont1	share1
storage2	East US	BlockBlobStorage	cont2	Not applicable
storage3	East US	FileStorage	Not applicable	share3
storage4	Central US	StorageV2	cont4	share4

In the East US Azure region, you create a storage sync service named Synd. You need to create a sync group in Synd. Which storage accounts can you use, and what can you specify as the cloud endpoints? To answer, select the appropriate options in the answer area. NOTE: Each correct selection is worth one point.

Answer Area

Storage accounts:

storage1 and storage3 only

storage1 only

storage1 and storage3 only

storage1 and storage4 only

storage1, storage2, and storage3 only

storage1, storage2, storage3, and storage4

Cloud endpoints:

share1 and share3 only

cont1 and cont2 only

share1 and share3 only

cont1, cont2, and cont4 only

share1, share3, and share4 only

cont1, cont2, share1, and share3 only

cont1, cont2, cont4, share1, share3, and share4

- A. Mastered
- B. Not Mastered

Answer: A

Explanation:

Answer Area

Storage accounts:

storage1 and storage3 only

storage1 only

storage1 and storage3 only

storage1 and storage4 only

storage1, storage2, and storage3 only

storage1, storage2, storage3, and storage4

Cloud endpoints:

share1 and share3 only

cont1 and cont2 only

share1 and share3 only

cont1, cont2, and cont4 only

share1, share3, and share4 only

cont1, cont2, share1, and share3 only

cont1, cont2, cont4, share1, share3, and share4

NEW QUESTION 148

HOTSPOT - (Topic 3)

Your on-premises network contains an Active Directory domain named contoso.com and 500 servers that run Windows Server. All the servers are Azure Arc-enabled and joined to contoso.com.

You need to implement PowerShell Desired State Configuration (DSC) on all the servers. The solution must minimize administrative effort.

Where should you store the DSC scripts, and what should you use to apply DSC to the servers? To answer, select the appropriate options in the answer area. NOTE: Each correct selection is worth one point.

Answer Area

Store in:

An Azure Automation account

An Azure App Configuration store

An Azure Automation account

An Azure Policy definition

Use:

Guest configuration in Azure Policy

A Group Policy Object (GPO) in Active Directory Domain Services (AD DS)

Azure virtual machine extensions

Guest configuration in Azure Policy

- A. Mastered
- B. Not Mastered

Answer: A



Explanation:

Answer Area

Store in:

An Azure Automation account

An Azure App Configuration store

An Azure Automation account

An Azure Policy definition

Use:

Guest configuration in Azure Policy

A Group Policy Object (GPO) in Active Directory Domain Services (AD DS)

Azure virtual machine extensions

Guest configuration in Azure Policy

NEW QUESTION 153

- (Topic 3)

You have servers that have the DNS Server role installed. The servers are configured as shown in the following table.

Name	Office	Local DNS zone	IP address
Server1	Paris	contoso.com	10.1.1.1
Server2	New York	None	10.2.2.2

All the client computers in the New York office use Server2 as the DNS server. You need to configure name resolution in the New York office to meet the following requirements:

- ? Ensure that the client computers in New York can resolve names from contoso.com.
- ? Ensure that Server2 forwards all DNS queries for internet hosts to 131.107.100.200.

The solution must NOT require modifications to Server1. Each correct answer presents part of the solution. NOTE: Each correct selection is worth one point.

- A. a forwarder
- B. a conditional forwarder
- C. a delegation
- D. a secondary zone
- E. a reverse lookup zone

Answer: AB

Explanation:

A conditional forwarder is required for contoso.com. A forwarder is required for all other domains.

When you have a conditional forwarder and a forwarder configured, the conditional forwarder will be used for the specified domain.

You could use a secondary zone for contoso.com but that would require a configuration change on Server1.

NEW QUESTION 157

HOTSPOT - (Topic 3)

You have a server named Server1 that runs Windows Server and contains three volumes named C, D, and E. Files are stored on Server1 as shown in the following table.

Name	On volume	Size
File1	C	500 KB
File2	D	10 KB
File3	D	1 MB

For volume D, Data Deduplication is enabled and set to General purpose file server. You perform the following actions:

- Move File1 to volume D.
- Copy File2 to volume D and name the copy File4.
- Move File3 to volume E

For each of the following statements, select Yes if the statement is true. Otherwise, select No. NOTE: Each correct selection is worth one point.

Answer Area

Statements

Yes

No

File1 is deduplicated after the deduplication job runs.

File3 is deduplicated after the deduplication job runs.

File4 is deduplicated after the deduplication job runs.

- A. Mastered
- B. Not Mastered

Answer: A

Explanation:



Statements	Yes	No
File1 is deduplicated after the deduplication job runs.	<input type="radio"/>	<input checked="" type="radio"/>
File3 is deduplicated after the deduplication job runs.	<input type="radio"/>	<input checked="" type="radio"/>
File4 is deduplicated after the deduplication job runs.	<input checked="" type="radio"/>	<input type="radio"/>

#### NEW QUESTION 162

- (Topic 2)

You are planning the implementation Azure Arc to support the planned changes. You need to configure the environment to support configuration management policies. What should you do?

- A. Hybrid Azure AD join all the servers.
- B. Create a hybrid runbook worker in Azure Automation.
- C. Deploy the Azure Connected Machine agent to all the servers.
- D. Deploy the Azure Monitor agent to all the servers.

**Answer:** C

#### Explanation:

Reference:

<https://docs.microsoft.com/en-us/azure/azure-arc/servers/plan-at-scale-deployment>

#### NEW QUESTION 166

- (Topic 2)

What should you implement for the deployment of DC3?

- A. Azure Active Directory Domain Services (Azure AD DS)
- B. Azure AD Application Proxy
- C. an Azure virtual machine
- D. an Azure AD administrative unit

**Answer:** C

#### Explanation:

Create a domain controller named dc3.corp.fabrikam.com in Vnet1.

In a hybrid network, you can configure Azure virtual machines as domain controllers. The domain controllers in Azure communicate with the on-premises domain controllers in the same way that on-premises domain controllers communicate with each other.

#### NEW QUESTION 171

- (Topic 2)

You need to configure remote administration to meet the security requirements. What should you use?

- A. just in time (JIT) VM access
- B. Azure AD Privileged Identity Management (PIM)
- C. the Remote Desktop extension for Azure Cloud Services
- D. an Azure Bastion host

**Answer:** A

#### Explanation:

Reference:

<https://docs.microsoft.com/en-us/azure/defender-for-cloud/just-in-time-access-usage?tabs=jit-config-asc%2Cjit-request-asc>

#### NEW QUESTION 176

- (Topic 1)

You need to meet the technical requirements for Server1. Which users can currently perform the required tasks?

- A. Admin1 only
- B. Admin3 only
- C. Admin1 and Admin3 only
- D. Admin1 Admin2. and Admm3

**Answer:** C

#### NEW QUESTION 178

- (Topic 2)

You need to implement an availability solution for DHCP that meets the networking requirements.

Which two actions should you perform? Each correct answer presents part of the solution. NOTE: Each correct selection is worth one point.

- A. On DHCP1. create a scope that contains 25 percent of the IP addresses from Scope2.
- B. On the router in each office, configure a DHCP relay.
- C. DHCP2. configure a scope that contains 25 percent of the IP addresses from Scope 1 .
- D. On each DHCP server, install the Failover Clustering feature and add the DHCP clusterrole.

E. On each DHCP scope, configure DHCP failover.

Answer: BE

Explanation:

Reference:

[https://docs.microsoft.com/en-us/previous-versions/windows/it-pro/windows-server-2012-r2-and-2012/hh831385\(v=ws.11\)](https://docs.microsoft.com/en-us/previous-versions/windows/it-pro/windows-server-2012-r2-and-2012/hh831385(v=ws.11))

NEW QUESTION 179

HOTSPOT - (Topic 1)

You need to meet the technical requirements for Server4.

Which cmdlets should you run on Server1 and Server4? To answer, select the appropriate options in the answer area.

NOTE: Each correct selection is worth one point.

Server1:

Enable-PSRemoting
Enable-ServerManagerStandardUserRemoting
Set-Item
Start-Service

Server4:

Enable-PSRemoting
Enable-ServerManagerStandardUserRemoting
Set-Item
Start-Service

- A. Mastered
- B. Not Mastered

Answer: A

Explanation:

Server1:

Enable-PSRemoting
Enable-ServerManagerStandardUserRemoting
Set-Item
Start-Service

Server4:

Enable-PSRemoting
Enable-ServerManagerStandardUserRemoting
Set-Item
Start-Service

NEW QUESTION 183

- (Topic 1)

You need to meet the technical requirements for User1. The solution must use the principle of least privilege.

What should you do?

- A. Add Users1 to the Server Operators group in contoso.com.
- B. Create a delegation on contoso.com.
- C. Add Users1 to the Account Operators group in contoso.com.
- D. Create a delegation on OU3.

Answer: D

Explanation:

Reference:

<https://docs.microsoft.com/en-us/windows-server/identity/ad-ds/plan/delegating-administration-of-account-ous-and-resource-ous>

NEW QUESTION 187

- (Topic 1)

You need to meet the technical requirements for VM3 On which volumes can you enable Data Deduplication?

- A. D and E only
- B. C, D, E, and F
- C. D only

- D. C and D only
- E. D, E, and F only

**Answer:** A

**Explanation:**

Reference:

<https://docs.microsoft.com/en-us/windows-server/storage/data-deduplication/interop>

**NEW QUESTION 188**

- (Topic 1)

You need to meet the technical requirements for the site links. Which users can perform the required tasks?

- A. Admin1 only
- B. Admin1 and Admin3 only
- C. Admin1 and Admin2 only
- D. Admin3 only
- E. Admin1, Adrrun2. and Admin3

**Answer:** C

**Explanation:**

Membership in the Enterprise Admins group or the Domain Admins group in the forest root domain is required.

**NEW QUESTION 191**

.....



## Thank You for Trying Our Product

### We offer two products:

1st - We have Practice Tests Software with Actual Exam Questions

2nd - Questions and Answers in PDF Format

### AZ-800 Practice Exam Features:

- \* AZ-800 Questions and Answers Updated Frequently
- \* AZ-800 Practice Questions Verified by Expert Senior Certified Staff
- \* AZ-800 Most Realistic Questions that Guarantee you a Pass on Your FirstTry
- \* AZ-800 Practice Test Questions in Multiple Choice Formats and Updatesfor 1 Year

**100% Actual & Verified — Instant Download, Please Click**  
**[Order The AZ-800 Practice Test Here](#)**