



**Microsoft**

**Exam Questions PL-900**

Microsoft Power Platform Fundamentals

#### NEW QUESTION 1

- (Exam Topic 1)

You have version 1.0.0.0 of a published Power Apps app. You create and publish version 2.0.0.0 of the app. A customer goes through the process of restoring the previous version of the app.

How many versions of the app are displayed in the Version tab for the app? To answer, select the appropriate option in the answer area.

You will see 

	▼
0	
1	
2	

 versions of the app.

- A. Mastered
- B. Not Mastered

**Answer:** A

#### Explanation:

Reference:

<https://docs.microsoft.com/en-us/powerapps/maker/canvas-apps/restore-an-app>

#### NEW QUESTION 2

- (Exam Topic 1)

A company uses Power Platform.

You must ensure that users cannot share customer data with other users. You must also ensure that users cannot connect to data sources unless you grant the user explicit permissions to access a data source.

You need to recommend solutions to meet the company's security requirements.

Which two types of policies should you recommend? Each correct answer presents part of the solution.

NOTE: Each correct selection is worth one point.

- A. Office cloud policies
- B. Group Policy Objects
- C. environment-level policies
- D. tenant-level policies
- E. preset security policies

**Answer:** CD

#### Explanation:

Reference:

<https://docs.microsoft.com/en-us/power-platform/admin/wp-data-loss-prevention> <https://docs.microsoft.com/en-us/power-platform/admin/create-dlp-policy>

#### NEW QUESTION 3

- (Exam Topic 1)

A large retail company implements Power Apps, Microsoft Flow, and the Common Data Service.

The board of directors is asking whether users are finding value in the technology. The company would like to measure and report usage of the software.

You need to recommend a tool to determine software usage. What should you recommend?

- A. Microsoft Intune
- B. Azure Stream Analytics
- C. Power Platform Analytics
- D. Dynamics 365 Product Insights

**Answer:** C

#### Explanation:

The Power Platform Analytics Usage report is the default reports seen by the logged in environment admin. It provides total app launches and daily active users across all apps in the environment. Admins can filter the view with attributes like device platform, player version, country, state, and city.

Reference:

<https://docs.microsoft.com/en-us/power-platform/admin/analytics-powerapps>

#### NEW QUESTION 4

- (Exam Topic 1)

You are building Power Apps apps that use both Dynamics 365 Sales and Microsoft 365.

For each of the following statements, select Yes if the statement is true. Otherwise, select No. NOTE: Each correct selection is worth one point.

Statement	Yes	No
Dynamics 365 Sales and Microsoft 365 must be in the same tenant to allow Single Sign-On (SSO).	<input type="radio"/>	<input type="radio"/>
You must download a product from AppSource to ensure that SSO works with Dynamics 365 Sales and Microsoft 365.	<input type="radio"/>	<input type="radio"/>

- A. Mastered  
B. Not Mastered

Answer: A

Explanation:

Box 1: No

When you offer your application for use by other companies through a purchase or subscription, you make your application available to customers within their own Azure tenants. This is known as creating a multi-tenant application.

Box 2: No Reference:

<https://docs.microsoft.com/en-us/azure/active-directory/manage-apps/isv-ssso-content>

NEW QUESTION 5

- (Exam Topic 1)

You manage the support team at a rapidly growing company.

Customers and support technicians need a better experience when logging and responding to support requests. You need more visibility into what the support technicians are doing every week.

You need to recommend tools to help the company's needs.

Which tools should you recommend? To answer, drag the appropriate tools to the correct requirements. Each tool may be used once, more than once, or not at all.

You may need to drag the split bar between panes or scroll to view content.

NOTE: Each correct selection is worth one point.

Tools	Answer Area	Requirement	Tool
Power Apps			
Microsoft Flow		Customers must be able to submit support requests by using a website.	Tool
Power BI		Support requests must be created and stored.	Tool
Common Data Service		Support technicians must be notified when a new support request is entered.	Tool
		Support technicians must be able to enter a status report for work completed during the previous week by using a mobile app.	Tool

- A. Mastered  
B. Not Mastered

Answer: A

Explanation:

Tools	Answer Area	Requirement	Tool
Power Apps			
Microsoft Flow		Customers must be able to submit support requests by using a website.	Power BI
Power BI		Support requests must be created and stored.	Common Data Service
Common Data Service		Support technicians must be notified when a new support request is entered.	Microsoft Flow
		Support technicians must be able to enter a status report for work completed during the previous week by using a mobile app.	Power Apps

NEW QUESTION 6

- (Exam Topic 1)  
A travel company plans to use the Power Platform to create tools that help travel agents book customer travel. You need to recommend solutions for the company. What should you recommend? To answer, drag the appropriate tools to the correct requirements. Each tool may be used once, more than once, or not at all. You may need to drag the split bar between panes or scroll to view content.  
NOTE: Each correct selection is worth one point.

Tools

Business rule

Business process flow

Power Automate

Power BI

Answer Area

Requirement	Tool
If a customer is travelling with a person under the age of 18, a field must display to collect date of birth for the under 18 traveler only.	Tool
Ensure that all travel agents use the same process with all customers.	Tool
Send a confirmation email to customers after reservations are complete.	Tool

- A. Mastered
- B. Not Mastered

Answer: A

Explanation:  
Reference:  
<https://docs.microsoft.com/en-us/power-automate/getting-started>  
<https://docs.microsoft.com/en-us/powerapps/maker/common-data-service/data-platform-create-business-rule#:~:>

NEW QUESTION 7

- (Exam Topic 1)  
You are a customer service manager.  
You need to implement a Power Apps portal that allows customers to submit cases. Which type of data source is used?

- A. Dynamics 365 Connector
- B. Microsoft SharePoint
- C. Microsoft Azure Storage
- D. Common Data Service

Answer: B

Explanation:  
SharePoint can be set up to setup customer feedback.  
Note: The PowerApp uses Finance and Operations connector to grab sales order information and SharePoint connector to connect and write the data to SharePoint list.  
Reference:  
<https://powerapps.microsoft.com/en-us/blog/scenario-2-collect-customer-feedback-in-sharepoint-after-order-delivery/>

NEW QUESTION 8

- (Exam Topic 1)  
A company uses Power Apps.  
You need to perform administrative tasks for the company.  
Which admin centers should you use? To answer, drag the appropriate admin centers to the correct requirements. Each admin center may be used once, more than once, or not at all. You may need to drag the split bar between panes or scroll to view content.  
NOTE: Each correct selection is worth one point.

Admin centers

Azure Active Directory

Dynamics 365 Admin center

Power Apps Admin center

Power BI Admin portal

Answer Area

Requirement	Admin center
Create user accounts for Power Apps.	Admin center
Assign the Environment Maker role to a user.	Admin center

- A. Mastered
- B. Not Mastered

Answer: A

Explanation:



Box 1: Azure Active Directory  
Create the company users in the Azure Active Directory. Box 2: Power Apps admin center  
In the Power Apps Admin center, manage environments that you've created and those for which you have been added to the Environment Admin or System Administrator role. From the admin center, you can perform these administrative actions:  
Create environments. Rename environments.  
Add or remove a user or group from either the Environment Admin or Environment Maker role. Etc.  
Reference:  
<https://docs.microsoft.com/en-us/power-platform/admin/environments-administration> <https://docs.microsoft.com/en-us/dynamics365/marketing/dynamics-365-admin-center> <https://powerapps.microsoft.com/sv-se/blog/introducing-admin-center-for-powerapps/>

NEW QUESTION 9

- (Exam Topic 2)  
You manage the support team at a rapidly growing company.  
Support technicians need a better experience when logging and responding to support requests. You need to recommend tools to help the company's needs. Which tools should you recommend? To answer, drag the appropriate tools to the correct requirements. Each tool may be used once, more than once, or not at all. You may need to drag the split bar between panes or scroll to view content.  
NOTE: Each correct selection is worth one point.

Tools	Answer Area	
	Requirement	Tool
Power Apps	Support technicians must be able to submit support requests by using an app.	
Power Automate	Customer data must be stored and synchronized with Dynamics 365 Finance.	
Power BI	Support technicians must be notified when a new support request is entered.	
Common Data Service		

- A. Mastered
- B. Not Mastered

Answer: A

Explanation:

Reference:  
<https://docs.microsoft.com/en-us/powerapps/maker/canvas-apps/help-desk-install> <https://docs.microsoft.com/en-us/power-platform/admin/data-integrator>  
<https://docs.microsoft.com/en-us/power-automate/getting-started>

NEW QUESTION 10

- (Exam Topic 2)  
A manufacturing company is evaluating AI Builder.  
You need to select AI Builder models to address specified requirements. Which model types should you use? To answer, drag the appropriate model types to the correct requirements. Each model type may be used once, more than once, or not at all. You may need to drag the split bar between panes or scroll to view content.  
NOTE: Each correct selection is worth one point.

Model types	Answer Area	
	Requirement	Model type
prediction	Identify products without labels or serial numbers.	model type
form processing	Identify customers who might not pay their invoices on time.	model type
object detection		

- A. Mastered
- B. Not Mastered

Answer: A

Explanation:

Reference:  
<https://docs.microsoft.com/en-us/ai-builder/object-detection-model-in-flow> <https://docs.microsoft.com/en-us/ai-builder/prediction-overview>

NEW QUESTION 10

- (Exam Topic 2)  
A company needs to create several workflows and applications to help streamline their sales operations. You need to determine which applications are appropriate for given scenarios. Which applications should you use? To answer, select the appropriate options in the answer area. NOTE: Each correct selection is worth one point.

Scenario	Application
Create no-code workflows that use different systems.	<div><div></div><div>Azure Logic Apps</div><div>Power Apps</div><div>Power Automate</div><div>Dynamics 365 workflows</div></div>
Build a no-code mobile application.	<div><div></div><div>Azure Logic Apps</div><div>Power Apps</div><div>Power Automate</div><div>Dynamics 365 workflows</div></div>
Administer your workflow in Microsoft Azure.	<div><div></div><div>Azure Logic Apps</div><div>Power Apps</div><div>Power Automate</div><div>Dynamics 365 workflows</div></div>
Build a mobile application by using Common Data Service.	<div><div></div><div>Azure Logic Apps</div><div>Power Apps</div><div>Power Automate</div><div>Dynamics 365 workflows</div></div>

- A. Mastered  
B. Not Mastered

Answer: A

Explanation:

Reference:

<https://docs.microsoft.com/en-us/power-automate/getting-started> <https://docs.microsoft.com/en-us/azure/logic-apps/logic-apps-overview>

<https://powerapps.microsoft.com/pl-pl/blog/business-model-may/>

NEW QUESTION 12

- (Exam Topic 2)

A bank uses Power Platform apps and flows to support business processes.

The company would like to use historical client data to predict whether a client's loan application is likely to be approved or rejected.

You need to use AI Builder to implement the solution.

Which four actions should you perform in sequence? To answer, move the appropriate actions from the list of actions to the answer area and arrange them in the correct order.

Actions

Publish the model.

Export data into AI Builder.

Train the model.

Import data into Common Data Service.

Use the model in PowerApps or Microsoft Flow.

Answer area

- A. Mastered  
B. Not Mastered

Answer: A

Explanation:

Step 1: Import data into Common Data Service.

AI Builder requires the use of Common Data Service, which is the data platform for PowerApps and allows you to store and manage business data. Common Data Service is the platform on which Dynamics 365 apps are built so if you're a Dynamics 365 customer, your data is already in Common Data Service.

Step 2: Train the model Step 3: Publish the model

The last step is to publish your model.

Step 4: Use the model in PowerApps or Microsoft Flow. Reference:

<https://docs.microsoft.com/en-us/ai-builder/build-model>

NEW QUESTION 14

- (Exam Topic 2)

What is a benefit of deploying Microsoft 365 and Dynamics 365 apps in the same tenant?

- A. Use Common Data Services to connect to application data.
- B. You only need to set up groups in Microsoft 365 for permissions to all data.
- C. Users can access both Microsoft 365 and Dynamics 365 by using Single Sign-on (SSO).

**Answer:** A

#### NEW QUESTION 19

- (Exam Topic 2)

A company plans to create Power Platform apps that consume industry-standard and proprietary data sources. For each of the following statements, select Yes if the statement is true. Otherwise, select No.

NOTE: Each correct selection is worth one point.

Statement	Yes	No
Custom connector cannot be used if a standard connector for the service is available.	<input type="radio"/>	<input type="radio"/>
Custom connectors are supported in instant flows only.	<input type="radio"/>	<input type="radio"/>
Standard and custom connectors cannot be mixed within the same flow or app.	<input type="radio"/>	<input type="radio"/>

- A. Mastered
- B. Not Mastered

**Answer:** A

#### Explanation:

Reference:

<https://docs.microsoft.com/en-us/powerapps/maker/canvas-apps/connections-list>

#### NEW QUESTION 21

- (Exam Topic 2)

Your company wants to create a help desk system and implement Dynamics 365 Customer Service. The company has the following requirements:

- > Provide an application to allow support team staff to chat live with a customer.
- > Automatically import data from a Microsoft Excel spreadsheet once a day.
- > Provide a chatbot that can assist customers who need support.

You need to determine which applications to use to meet the requirements.

Which applications should you use? To answer, select the appropriate options in the answer area. NOTE: Each correct selection is worth one point.

Requirement	Application
Automatically import data from a Microsoft Excel spreadsheet once a day.	<input type="text" value="Custom Connector"/> <input type="text" value="Azure Data Lake"/> <input type="text" value="Power Automate"/> <input type="text" value="Power BI"/>
Provide a chatbot that can assist customers who need support.	<input type="text" value="Power Virtual Agent"/> <input type="text" value="Power Automate"/>

- A. Mastered
- B. Not Mastered

**Answer:** A

#### Explanation:

Graphical user interface, text, application, chat or text message Description automatically generated

Reference:

<https://docs.microsoft.com/en-us/power-virtual-agents/fundamentals-what-is-power-virtual-agents>

A 10-step Guide to Excel Automation using Power Automate Desktop | by Utkarsh Shahdeo | Medium

#### NEW QUESTION 25

- (Exam Topic 3)

You are creating Power BI reports.  
You need to choose which filters you can use for reports.  
Which three types of filters can you use? Each correct answer presents a complete solution. NOTE: Each correct selection is worth one point.

- A. drill-down
- B. automatic
- C. database
- D. manual
- E. external

Answer: ABD

Explanation:  
Reference:  
<https://docs.microsoft.com/en-us/power-bi/power-bi-report-filter-types>

NEW QUESTION 27

- (Exam Topic 3)  
You create a set of dashboards and reports for a project team that combines data from different sources in Power BI. Some of the data is considered sensitive.  
You need to distribute the dashboards and reports securely to the team. What should you create?

- A. a custom data connector
- B. a published app
- C. a Microsoft flow
- D. a Power BI workspace

Answer: B

Explanation:  
Reference:  
<https://docs.microsoft.com/en-us/power-bi/service-how-to-collaborate-distribute-dashboards-reports>

NEW QUESTION 29

- (Exam Topic 3)  
You create a Power BI dashboard that displays Common Data Model data. You need to share the Power BI dashboard with coworkers and allow the coworkers to collaborate. What are two possible ways to achieve the goal? Each correct answer presents a complete solution. NOTE: Each correct selection is worth one point.

- A. Create a Power Automate flow to export the data into a SQL Server database.
- B. Publish the dashboard as an app to your coworkers.
- C. Export the data to Microsoft Exce
- D. Make required changes and then re-import the data.
- E. Create a Power BI workspace and grant coworkers permissions.

Answer: AB

Explanation:  
Reference:  
<https://docs.microsoft.com/en-us/power-bi/collaborate-share/service-create-the-new-workspaces>

NEW QUESTION 31

- (Exam Topic 3)  
A company needs to create a series of mobile applications to empower their field engineers to accomplish several tasks with varying degrees of complexity.  
Match each option to its answer.  
Instructions: To answer, drag the appropriate app type from the column on the left to its definition on the right. Each app type may be used once, more than once, or not at all.  
NOTE: Each correct match is worth one point.

App types	Answer Area
	Definition
model-driven	
dashboard	Quickly create apps for very complex business processes with very little or no code.
dataset	
canvas	Create simple apps with a highly customizable user interface layouts.

App type

App type

- A. Mastered
- B. Not Mastered

Answer: A

Explanation:  
Box 1: canvas  
Both model-driven and canvas apps allow you to easily build business apps. They both share access to the Common Data Service providing standard and custom entities. Canvas apps start with your user experience, crafting a highly tailored interface with the power of a blank canvas and connecting it to 200 data sources.



Canvas apps can be built for web, mobile, and tablet applications. Model-driven apps start with your data model – building up from the shape of your core business data and processes in the Common Data Service to model forms, views, and other components. Model-driven apps automatically generate great UI that is responsive across devices.  
Box 2: model-driven Reference:  
<https://powerapps.microsoft.com/sv-se/blog/introducing-model-driven-apps/>

NEW QUESTION 36

- (Exam Topic 3)  
You are a district manager for a large retail organization. You train each store manager to use Power BI to track sales and daily sales targets. A store manager remembers learning about the Analyze in Excel option but cannot find the option in their Power BI dashboard. You need to help the user resolve the issue. How should you advise the user?

- A. Install the Power BI Desktop app.
- B. Navigate to the report used by the dashboard.
- C. Select the Spotlight button on the dashboard tile.
- D. Subscribe to the dashboard and follow the email link.

Answer: B

Explanation:  
Reference:  
<https://docs.microsoft.com/en-us/power-bi/collaborate-share/service-analyze-in-excel>

NEW QUESTION 39

- (Exam Topic 3)  
A company manages a chain of retail stores. The company stores a list of retail store names and numbers in one Power BI table. The company stores sales transaction data including a transaction ID in another table. The transaction ID includes the store number. You need to show the store name for all retail transactions in all Power BI reports. Which tool should you use?

- A. Query Editor
- B. Power BI Service
- C. Microsoft Excel
- D. Data Connector

Answer: A

Explanation:  
Power BI Desktop comes with Query Editor, where you can connect to one or many data sources, shape and transform the data to meet your needs, then load that model into Power BI Desktop.  
Reference:  
<https://docs.microsoft.com/en-us/power-bi/desktop-query-overview>

NEW QUESTION 42

- (Exam Topic 3)  
What is a benefit of deploying Microsoft 365 and Dynamics 365 apps in the same tenant?

- A. You do not need to manually back up data.
- B. Both will use the same time zone.
- C. You can use Power BI to display data that comes from both environments.
- D. You can implement Single Sign-On (SSO).

Answer: C

Explanation:  
Reference:  
<https://docs.microsoft.com/en-us/power-platform/admin/use-power-bi>

NEW QUESTION 45

- (Exam Topic 3)  
You are a district manager for a large retail company. You want to provide sales managers with deeper sales insights to ensure that they can make more informed decisions for their stores. Store managers must be able to view data in near real-time. You need to create and share a Power BI dashboard that can be used by the store managers. Which tools can you use? To answer, drag the appropriate reporting types to the correct requirements. Each reporting type may be used once, more than once, or not at all. You may need to drag the split bar between panes or scroll to view content.

Reporting Types

Power BI Desktop only

Power BI Service only

Power BI Desktop or Power BI Service

Answer Area

Requirement

Create Power BI dashboards that contain a single store's sales information.

Share the dashboard with your retail managers.

Reporting type

Reporting type

Reporting type

- A. Mastered
- B. Not Mastered

Answer: A

Explanation:

Reference:

<https://docs.microsoft.com/en-us/power-bi/fundamentals/desktop-getting-started>

NEW QUESTION 50

- (Exam Topic 3)

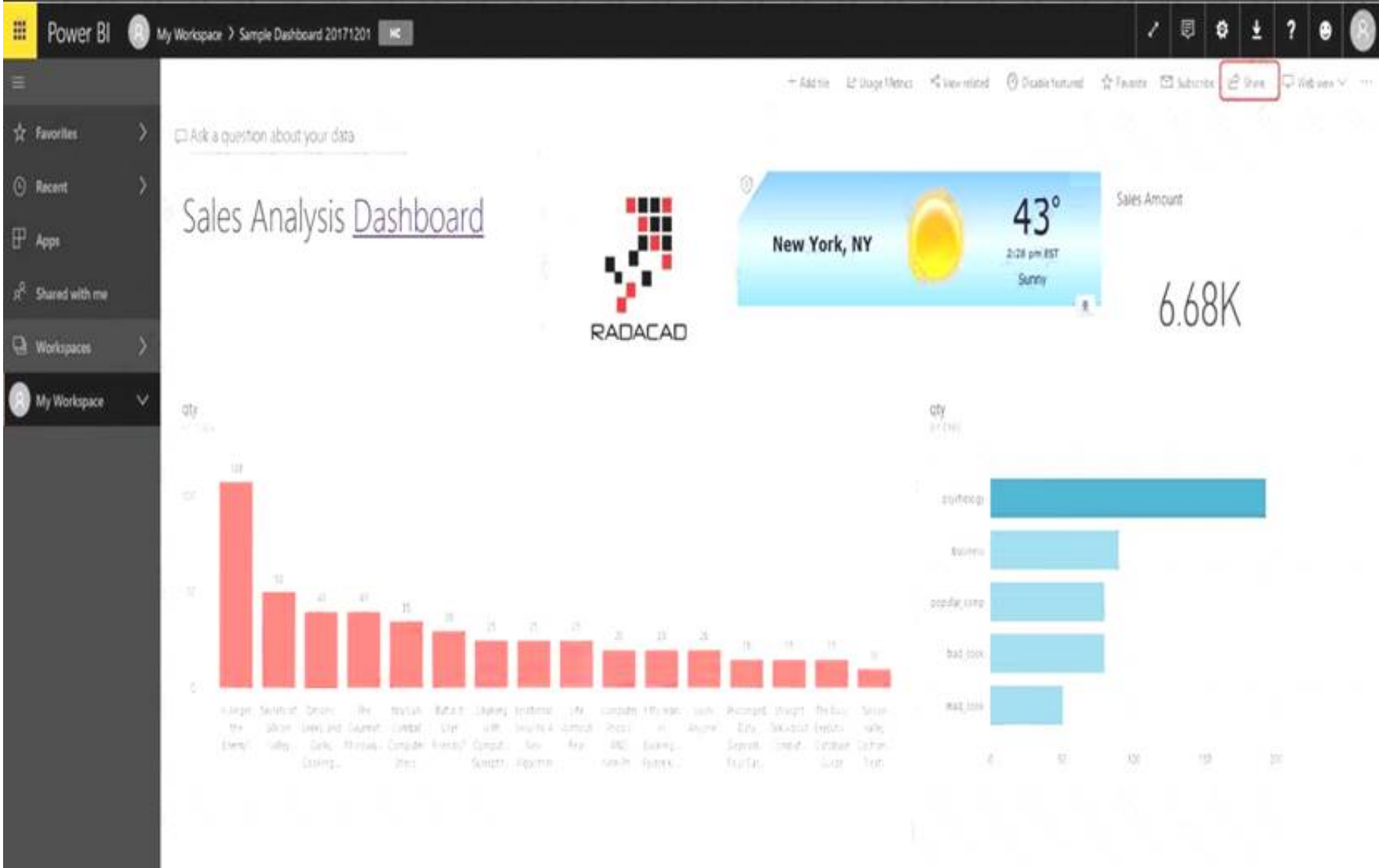
You create a Power BI dashboard that displays data from Dynamics 365 Customer Engagement. You need to share the Power BI dashboard with coworkers. What are three possible ways to achieve the goal? Each correct answer presents a complete solution. NOTE: Each correct selection is worth one point.

- A. Create a Power BI workspace and grant coworkers permissions.
- B. Publish the dashboard as an app to your coworkers.
- C. Export the data into Common Data Service for others to manipulate in Power BI.
- D. Export the data to Microsoft Excel for coworkers to import and view in Power BI.
- E. Embed reports in your company's internal web portal.

Answer: ABE

Explanation:

A: Basic Sharing for Dashboards and Reports through a workspace is the most common way of sharing the Power BI content. Basic Sharing is very simple and easy to use method. You can simply click on the Share button in the dashboard or report, and then share it with other users.



B: Apps are great sharing method for multiple environment, and best way of sharing for users in production environment. Power BI App is the solution for multiple environment approach. With Power BI App, your development environment (workspace), and user environment (App) are isolated from each other.  
 Note: If you are using SharePoint online as a portal for document management and some other reasons already, then consider using Embed in SharePoint Online feature of Power BI reports. This method is secure and you can share the report only with Power BI users you want.  
 E: Sometimes, you don't need a secure way of sharing, you may search for an easy and free way of sharing, and your content is not confidential or sensitive. Publish to web is your friend in such situation. This is the only free way of sharing in Power BI, but be aware that this method is not secure. Publish to web method, gives you an embed code, which you can use in any web pages to embed the Power BI report in it  
 Reference:  
<https://radacad.com/power-bi-sharing-methods-comparison-all-in-one-review>

NEW QUESTION 52

- (Exam Topic 3)

You create reports within Power BI to report on the status of a project. A manager asks you to share the reports with other team members. You decide to create a published app and set permissions to allow other team members to view the reports. For each of the following statements, select Yes if the statement is true. Otherwise, select No. NOTE: Each correct selection is worth one point.

Statement	Yes	No
The Power BI published app is stored within the Team site so that others can install it.	<input type="radio"/>	<input type="radio"/>
One of the other project managers installs and modifies a dashboard within the Power BI published app. The changes are automatically made into the original published app.	<input type="radio"/>	<input type="radio"/>

- A. Mastered
- B. Not Mastered

**Answer:** A

**Explanation:**

Reference:

<https://docs.microsoft.com/en-us/power-bi/collaborate-share/service-create-distribute-apps>

**NEW QUESTION 55**

- (Exam Topic 3)

You need to display sales orders greater than a specific threshold in a Power BI report. What should you use?

- A. Common Data Service
- B. connector
- C. Power Query
- D. filter

**Answer:** D

**NEW QUESTION 59**

- (Exam Topic 3)

You are a sales representative. You create a Power BI report to visualize data from a Microsoft Excel workbook.

Users need to be able to view and share the report.

Which two actions should you perform? Each correct answer presents part of the solution. NOTE: Each correct selection is worth one point.

- A. Pin the report to a dashboard.
- B. Export the data.
- C. Publish the dashboard.
- D. Share the dashboard.

**Answer:** AD

**Explanation:**

Reference:

<https://docs.microsoft.com/en-us/power-bi/create-reports/service-dashboard-pin-live-tile-from-report> <https://docs.microsoft.com/en-us/power-bi/collaborate-share/service-share-dashboards#limitations-andconsidera>

**NEW QUESTION 61**

- (Exam Topic 3)

This question requires that you evaluate the BOLD text to determine if it is correct.

You have a Power BI report with a page named RevReceived. The page shows revenue received by your company. You want to create an almost identical page that shows net revenue instead of gross revenue. To accomplish this task, you modify the RevReceived page.

Review the underlined text. If it makes the statement correct, "No change is needed". If the statement is incorrect, select the answer choice that makes the statement correct.

- A. No change is needed.
- B. duplicate the RevReceived page.
- C. import the RevReceived page.
- D. copy the visuals from RevReceived to a new page.

**Answer:** B

**Explanation:**

Reference: [https://www.tutorialspoint.com/power\\_bi/power\\_bi\\_quick\\_guide.htm](https://www.tutorialspoint.com/power_bi/power_bi_quick_guide.htm)

**NEW QUESTION 64**

- (Exam Topic 3)

A manufacturing company uses Internet of Things (IoT) devices to monitor the temperature in different parts of their warehouse. The current IoT monitoring software is extremely outdated and is not user friendly.

You need to view near-real time information from the IoT devices in Power BI Service dashboards. Which tool should you use?

- A. Scheduled refresh dataset
- B. Streaming dataset
- C. Content Pack dataset
- D. Power BI dataflows
- E. Quick Insights

Answer: B

Explanation:

<https://docs.microsoft.com/en-us/power-bi/service-real-time-streaming>  
<https://powerbi.microsoft.com/en-us/blog/using-power-bi-real-time-dashboards-to-display-iot-sensor-data-astep-by-step-tutorial/>

NEW QUESTION 65

- (Exam Topic 3)

A company plans to create an information portal that managers can use to view critical information about their teams. You need to recommend the type of Power BI components that the company should use. What should you recommend? To answer, drag the appropriate components to the correct requirements. Each component may be used once, more than once, or not at all. You may need to drag the split bar between panes or scroll to view content. NOTE. Each correct selection is worth one point.

Component types	Requirement	Component type
Dashboard		
Report	Display data from a Microsoft Excel workbook that has multiple worksheets into one chart.	Component type
	Display the top departmental goal metrics and alert users when specific thresholds targets are met.	Component type
	Display Sales charts that can be filtered by region.	Component type

- A. Mastered
- B. Not Mastered

Answer: A

Explanation:

Box 1: Report  
Reports are more detailed data displayed in many formats like chart, graphs list and in tabular, etc. Box 2: Dashboard  
Dashboards are a business key performance indicator view where it displays key values that can change business profits and can be glanced at one screen. Box 3: Report  
Power BI dashboards cannot slice and dice, but reports have many ways to filter and slice.  
Note: Power BI dashboards are one placeholder to display the most important decision-making facts to run a business. But reports are more detailed data displayed in many formats like chart, graphs list and in tabular, etc. Reports are based on one dataset or one business unit data for example reports of a store belonging to California.  
Reference:  
<https://www.educba.com/power-bi-dashboard-vs-report/>

NEW QUESTION 66

- (Exam Topic 3)

Your company has an on premises Microsoft SQL Server database that contains legacy sales data. You must display information from the database in a new Power Apps app. You need to establish a secure connection between the database and the app. What should you use?

- A. Data source
- B. App
- C. Gateway
- D. Flow

Answer: C

Explanation:

For an on-premises database, identify a data gateway that was shared with you (or create one). Specify Connect using on-premises data gateway, type or paste the server name, the database name, the user name, and the password for the database that you want to use, and specify the authentication type and the gateway.  
Reference:  
<https://docs.microsoft.com/en-us/powerapps/maker/canvas-apps/connections/connection-azure-sqldatabase>

NEW QUESTION 68

- (Exam Topic 3)

You create a Power BI dashboard. Match each option to its function. To answer, drag the appropriate option from the column on the left to its function on the right. Each option may be used once, more than once, or not at all. NOTE: Each correct match is worth one point.



Products

Share

Embed

Get Data

Pin

Import

Answer Area

Requirement	Product
Ensure that coworkers can see the dashboard.	
Display data from Microsoft Excel in the dashboard.	
Add a report tile to the dashboard.	

- A. Mastered  
B. Not Mastered

Answer: A

Explanation:

Reference:  
<https://docs.microsoft.com/en-us/power-bi/service-set-data-alerts> <https://docs.microsoft.com/en-us/power-bi/service-analyze-in-excel> <https://docs.microsoft.com/en-us/power-bi/service-dashboard-pin-tile-from-report>

NEW QUESTION 72

- (Exam Topic 3)  
A company is using Power BI to build visualizations.  
The company's IT support team needs to know when to install Power BI Desktop on users' computers and where the Power BI Service will suffice to perform tasks.  
You need to recommend solutions for the company.  
What should you recommend? To answer, drag the appropriate components to the correct requirements. Each component may be used once, more than once, or not at all. You may need to drag the split bar between panes or scroll to view content.  
NOTE: Each correct selection is worth one point.

Tools

Power BI Service only

Power BI Desktop only

Power BI Desktop or Power BI Service

Answer Area

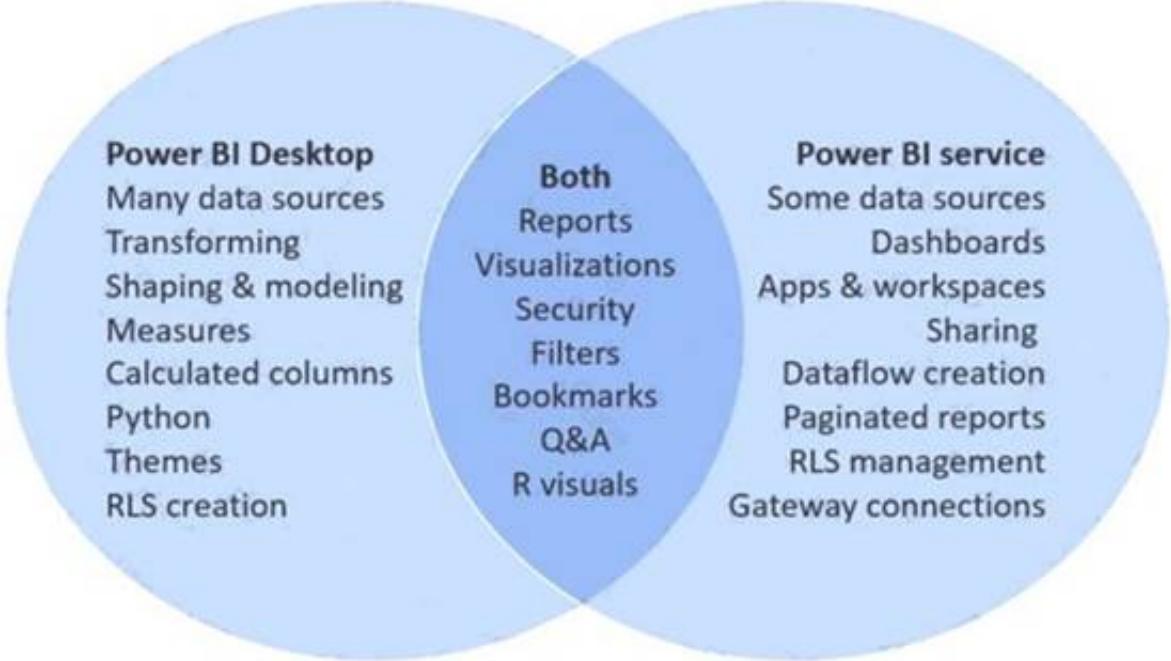
Requirement	Component
Create dashboards.	Tool
Create reports.	Tool
Create calculated columns.	Tool
Configure security.	Tool
Configure sharing.	Tool

- A. Mastered  
B. Not Mastered

Answer: A

Explanation:

In a Venn diagram comparing Power BI Desktop and the Power BI service, the area in the middle shows how the two overlap. Some tasks you can do in either Power BI Desktop or the service. The two sides of the Venn diagram show the features that are unique to the application and the service.



Reference:  
<https://docs.microsoft.com/en-us/power-bi/designer/service-service-vs-desktop>

NEW QUESTION 77

- (Exam Topic 3)

A company plans to implement Power BI to analyze retail operations data. You need to recommend solutions for the company. Which Power BI components should the company use? To answer, drag the appropriate Power BI components to the correct requirements. Each Power BI component may be used once, more than once, or not at all. You may need to drag the split bar between panes or scroll to view content. NOTE: Each correct selection is worth one point.

Power BI components

reports

workspaces

dashboards

dataset

Answer Area

Requirement	Power BI component
Allow users to set and receive alerts when data changes beyond specified limits.	
View and filter data and export data to Microsoft Excel for further manipulation and analysis.	

- A. Mastered
- B. Not Mastered

Answer: A

Explanation:

Power BI components

reports

workspaces

dashboards

dataset

Answer Area

Requirement	Power BI component
Allow users to set and receive alerts when data changes beyond specified limits.	workspaces
View and filter data and export data to Microsoft Excel for further manipulation and analysis.	dataset

NEW QUESTION 82

- (Exam Topic 3)  
You have a Power BI report.

For each of the following statements, select Yes if the statement is true. Otherwise, select No. NOTE: Each correct selection is worth one point.

Statement	Yes	No
You can export data from a visualization in a Power BI report.	<input type="radio"/>	<input type="radio"/>
You can show the data behind a visual report on your screen without exporting the data.	<input type="radio"/>	<input type="radio"/>
You must export data to view supporting data for a KPI.	<input type="radio"/>	<input type="radio"/>

- A. Mastered
- B. Not Mastered

Answer: A

Explanation:

Box 1: Yes  
If you'd like to see the data that Power BI uses to create a visualization, you can display that data in Power BI. You can also export that data to Excel as an .xlsx or .csv file. The option to export the data requires a Pro or Premium license and edit permissions to the dataset and report.  
Note: Export data from a Power BI dashboard

- > Select the ellipsis in the upper-right corner of the visualization.
- > Choose the Export data icon.
- > Power BI exports the data to a .csv file. If you've filtered the visualization, then the app will filter the downloaded data.
- > Your browser will prompt you to save the file. Once saved, open the .csv file in Excel.

Box 2: No  
Underlying data: Select this option if you want to see the data in the visual and additional data from the model (see chart below for details). If your visualization has an aggregate, selecting Underlying data removes the aggregate. When you select Export, Power BI exports the data to an .xlsx file and your browser prompts you to save the file. Once saved, open the file in Excel.

Box 3: Yes  
A KPI dataset needs to contain goal values for a KPI. If your dataset doesn't contain goal values, you can create them by adding an Excel sheet with goals to your data model or PBIX file.

Note: A Key Performance Indicator (KPI) is a visual cue that communicates the amount of progress made toward a measurable goal.

Reference:

<https://docs.microsoft.com/en-us/power-bi/visuals/power-bi-visualization-export-data> <https://docs.microsoft.com/en-us/power-bi/visuals/power-bi-visualization-kpi>

#### NEW QUESTION 85

- (Exam Topic 4)

A user is trying to understand the differences between the various ways apps can be built by using Power Apps.

For each of the following statements, select Yes if the statement is true. Otherwise, select No. NOTE: Each correct selection is worth one point.

Statement	Yes	No
You can embed canvas apps in model-driven apps.	<input type="radio"/>	<input type="radio"/>
A Power Apps portal can use only one data source.	<input type="radio"/>	<input type="radio"/>
You must use Power BI to create reports in model-driven apps.	<input type="radio"/>	<input type="radio"/>

A. Mastered

B. Not Mastered

**Answer:** A

#### Explanation:

Box 1: Yes

You can create a canvas app and then embed that within a model driven app.

Box 2: No

With the capability to build a portal in PowerApps, you can create a website for external and internal users enabling them to interact with data stored in Common Data Service.

Note: Common Data Service lets you securely store and manage data that's used by business applications. Data within Common Data Service is stored within a set of entities. An entity is a set of records used to store data, similar to how a table stores data within a database. Common Data Service includes a base set of standard entities that cover typical scenarios, but you can also create custom entities specific to your organization and populate them with data using Power Query. App makers can then use PowerApps to build rich applications using this data.

Box 3: Yes

To get started building a report you'll need the latest version of Power BI Desktop and a PowerApps environment with the latest version of the Common Data Service.

Reference:

<https://carldesouza.com/how-to-embed-a-canvas-app-in-a-model-driven-app-in-powerapps/> <https://docs.microsoft.com/en-us/powerapps/maker/portals/create-portal> <https://docs.microsoft.com/en-us/powerapps/maker/common-data-service/data-platform-intro>

#### NEW QUESTION 90

- (Exam Topic 4)

A company uses Dynamics 365 Supply Chain Management.

The company wants to build custom user interfaces that add additional functionality.

You need to recommend a solution for the company. What should you recommend?

A. Power BI

B. Power Apps canvas apps

C. AI Builder

D. Microsoft Flow

**Answer:** B

#### Explanation:

Microsoft Power Apps provides a consistent experience for building apps and extending Office 365 and Dynamics 365. Investments include enhancements on Unified Interface, support for embedding canvas apps in model-driven apps and native support of the Common Data Service for Apps.

Reference:

<https://powerapps.microsoft.com/en-us/roadmap/>

#### NEW QUESTION 92

- (Exam Topic 4)

You have a Microsoft Excel workbook that contains a list of tasks for a project. You store the file in OneDrive for Business.

You need to create a canvas app that allows team members to update the status of their tasks. What should you use?

A. the Generate an app from data feature

B. a custom action in Common Data Service

C. Power Apps Checker

D. the Open entity data in Excel feature

**Answer:** A

#### Explanation:



Reference:  
<https://docs.microsoft.com/en-us/powerapps/maker/canvas-apps/add-data-connection>

#### NEW QUESTION 97

- (Exam Topic 4)

You create a canvas app by using the Generate from data feature. The app connects to a Microsoft SharePoint list.

For each of the following statements, select Yes if the statement is true. Otherwise, select No. NOTE: Each correct selection is worth one point.

Statement	Yes	No
A screen is generated that contains a browsable list of SharePoint list items.	<input type="radio"/>	<input type="radio"/>
A screen is generated that allows users to update SharePoint list items.	<input type="radio"/>	<input type="radio"/>

- A. Mastered
- B. Not Mastered

**Answer:** A

#### Explanation:

Reference:  
<https://docs.microsoft.com/en-us/powerapps/maker/canvas-apps/app-from-sharepoint>

#### NEW QUESTION 101

- (Exam Topic 4)

You create a Power Apps canvas app.

You need to ensure that your coworkers can run the app. What should you do?

- A. Share the app.
- B. Send the URL for the app to coworkers.
- C. Add a license for the app.
- D. Create a Flow for the app.

**Answer:** A

#### Explanation:

Reference:  
<https://docs.microsoft.com/en-us/powerapps/maker/canvas-apps/share-app>

#### NEW QUESTION 102

- (Exam Topic 4)

For each of the following statements, select Yes if the statement is true. Otherwise, select No.

NOTE: Each correct selection is worth one point.

Statement	Yes	No
Power Apps apps can run only mobile devices.	<input type="radio"/>	<input type="radio"/>
Power Apps can run only with Dynamic 365 products.	<input type="radio"/>	<input type="radio"/>
If a user runs a Power Apps app that accesses information to which the user does not have access, the app grants the user permissions.	<input type="radio"/>	<input type="radio"/>

- A. Mastered
- B. Not Mastered

**Answer:** A

#### Explanation:

Text, application Description automatically generated

Box 1: No

You can run apps in a browser or on mobile devices. Box 2: No



On-premises versions of Microsoft Office can also be used. Box 3: No  
You must ensure that the users you share the app with have the appropriate permissions. Reference:  
<https://docs.microsoft.com/en-us/powerapps/powerapps-overview> <https://docs.microsoft.com/en-us/powerapps/maker/canvas-apps/share-app>  
<https://docs.microsoft.com/en-us/power-platform/admin/online-requirements>

NEW QUESTION 106

- (Exam Topic 4)  
A company publishes e-books for independent authors.  
The company wants to implement a Power Apps portal solution to make announcements about upcoming books to the general public.  
You need to recommend features for the company.  
Which features should you use? To answer, select the appropriate options in the answer area. NOTE: Each correct selection is worth one point.

Requirement	
Ensure that book authors can securely access their data.	<div>Authenticate external users.</div> <div>Access data in Common Data Service.</div> <div>Use page templates.</div> <div>Browse content anonymously.</div>
Ensure consistent page design across the website.	<div>Authenticate external users.</div> <div>Access data in Common Data Service.</div> <div>Use page templates.</div> <div>Browse content anonymously.</div>
Ensure that the public can access announcements about upcoming	<div>Authenticate external users.</div> <div>Use page templates.</div> <div>Browse content anonymously.</div>

- A. Mastered
- B. Not Mastered

Answer: A

Explanation:  
Reference:  
<https://www.onactuate.com/upgrades/what-is-the-new-powerapps-portal/>  
<https://docs.microsoft.com/en-us/powerapps/maker/portals/configure/page-templates>

NEW QUESTION 110

- (Exam Topic 4)  
A company's customer-facing applications must comply with Global Data Protection Regulations (GDPR) regulations.  
You need to recommend actions to help ensure GDPR compliance.  
Which two features should the company use? Each correct answer presents part of the solution. NOTE: Each correct selection is worth one point.

- A. Prompt a user for consent to use their personal data and record the date consented.
- B. Automatically deactivate a user who has not used the portal in six months.
- C. Force a user to update security questions after a specific amount of time.
- D. Block users who are identified as minors.

Answer: AD

Explanation:  
Reference: [https://en.wikipedia.org/wiki/General\\_Data\\_Protection\\_Regulation](https://en.wikipedia.org/wiki/General_Data_Protection_Regulation)

NEW QUESTION 113

- (Exam Topic 4)  
A company plans to create canvas apps.  
What is the minimum number of connectors required? To answer, drag the appropriate number of connectors to the correct drop scenarios. Each number of connectors may be used once, more than once, or not at all. You may need to drag the split bar between panes or scroll to view content.  
NOTE: Each correct selection is worth one point.

Number of connectors	Answer Area		Number of connectors
		Scenario	
0			
1		Synchronize data with three data sources that use different proprietary database formats.	
2		Create three Power Apps apps that each display data from a Microsoft SharePoint list.	
3		Create three Flows that each copy data to Microsoft Azure Data Lake on different schedules.	

- A. Mastered
- B. Not Mastered

Answer: A

**Explanation:**

Reference:

<https://docs.microsoft.com/en-us/powerapps/maker/canvas-apps/connections-list> <https://docs.microsoft.com/en-us/connectors/connectors>

**NEW QUESTION 117**

- (Exam Topic 4)

You are designing a Power Apps solution that allows users to upload a status report directly to the company Microsoft SharePoint project management site from their mobile device.

For each of the following statements, select Yes if the statement is true. Otherwise, select No. NOTE: Each correct selection is worth one point.

Statement	Yes	No
You should build a model-driven app in Power Apps.	<input type="radio"/>	<input type="radio"/>
You should build a canvas app in Power Apps.	<input type="radio"/>	<input type="radio"/>
Users must download and run the Power Apps mobile application to use the solution.	<input type="radio"/>	<input type="radio"/>

- A. Mastered
- B. Not Mastered

**Answer:** A

**Explanation:**

Box 1: No

Box 2: Yes

Box 3: Yes

When you create an app, or someone shares an app with you, you can run that app on Windows, iOS, Android, or in a web browser.

References:

<https://docs.microsoft.com/en-us/powerapps/maker/canvas-apps/app-from-sharepoint> <https://docs.microsoft.com/en-us/powerapps/user/run-app-client>

**NEW QUESTION 120**

- (Exam Topic 5)

A company uses Dynamics 365 Customer Service. The company uses a manual process to manage call escalations.

You must use Power Automate to automate the process for routing escalated calls. You need to create the flow.

Which type of connector should you use?

- A. Microsoft Excel
- B. Common Data Service
- C. Office 365 Users

**Answer:** B

**NEW QUESTION 121**

- (Exam Topic 5)

A company uses Microsoft Flow.

Each time a work order is created, a service manager must review and approve the work order before a worker is dispatched.

You need to create a flow to enforce the process. What should you create?

- A. plug-in
- B. approval flow
- C. business rule
- D. team flow
- E. instant flow

**Answer:** B

**Explanation:**

With Power Automate, you can manage the approval of documents or processes across several services, including SharePoint, Dynamics 365, Salesforce, OneDrive for Business, Zendesk, or WordPress. Reference:

<https://docs.microsoft.com/en-us/power-automate/modern-approvals>

**NEW QUESTION 126**

- (Exam Topic 5)

You build a flow using a template. You want to add support for additional business scenarios. You need to ensure that the new workflow does not break existing functionality.

Which flow editing utilities should you use? To answer, drag the appropriate tools to the correct requirements. Each tool may be used once, more than once, or not at all. You may need to drag the split bar between panes or scroll to view content.

NOTE: Each correct selection is worth one point.

Tools

Test

Flow Checker

Answer Area

Requirement	Tool
Check the new flow for any errors or warnings.	Tool
Run the flow using previously processed data.	Tool
Monitor the flow as it is running.	Tool

- A. Mastered  
B. Not Mastered

Answer: A

Explanation:

Box 1: Flow Checker

The Flow checker feature will promote higher quality flows by ensuring you follow best practices. By running the checker, you will be able to get answers to questions like: which areas of my flow implementation pose a performance or reliability risk?

For each issue identified, the Flow checker points to specific occurrences within the flow where improvements may be required. And more importantly, you learn how to implement these improvements by following detailed guidance.

Box 2: Test

Box 3: Test Reference:

<https://flow.microsoft.com/en-us/blog/flow-checker-four-connectors/> <https://docs.microsoft.com/en-us/power-automate/modern-approvals>

NEW QUESTION 130

- (Exam Topic 5)

You need to build a Power Virtual Agents chatbot for a company.

Which components should you use? To answer, drag the appropriate components to the correct requirements. Each component may be used once, more than once, or not at all. You may need to drag the split bar between panes or scroll to view content.

NOTE: Each correct selection is worth one point.

Components

Entity

Variable

Trigger Phrase

Answer Area

Requirement	Component
Identify keywords or questions and relate them to issues.	Component
Store a response that a user enters for later use.	Component
Identify a specific type of information from a user response.	Component

- A. Mastered  
B. Not Mastered

Answer: A

Explanation:

Graphical user interface, text, application Description automatically generated

NEW QUESTION 132

- (Exam Topic 5)

A company uses Dynamics 365 Supply Chain Management and Dynamics 365 Finance. User account data must be synchronized between the two system. You need to ensure that the synchronized data is stored in one place. What should you use?

- A. SQLServer  
B. Common Data Service  
C. Azure Active Directory  
D. Azure IoT Central

Answer: B

Explanation:

Reference:

<https://docs.microsoft.com/en-us/power-platform/admin/data-integrator>

#### NEW QUESTION 134

- (Exam Topic 5)

Users within a company use Flow for personal productivity.

Users often overwrite their working flows by editing the definitions and are unable to undo changes after saving a flow.

You need to ensure that users can revert a flow to the current state.

Which two options can you use? Each correct answer presents a complete solution. NOTE: Each correct selection is worth one point.

- A. Export
- B. Rename
- C. Save As
- D. Share

**Answer:** AC

#### Explanation:

A: You can export a flow as a package and import it into a different environment, or use it to restore the in the same environment at a later point in time.

C: The ability to make a copy of your flow is often useful when you want to create a flow similar to something you've already created. Or, if you want to maintain a draft of your working flow as you work on adding more functionality.

Here's how:

Go to your My flows page. Click on the More (...) menu item next to the flow that you want to create a copy of. Click on the Save As command.

Reference:

<https://flow.microsoft.com/en-us/blog/import-export-bap-packages/> <https://flow.microsoft.com/en-us/blog/make-a-copy/>

#### NEW QUESTION 138

- (Exam Topic 5)

For which scenarios can you use Power Automate?

For each of the following statements, select Yes if the statement is true. Otherwise, select No. NOTE: Each correct selection is worth one point.

Statement	Yes	No
Notify team members when a response is recorded in a form in Microsoft Forms.	<input type="radio"/>	<input type="radio"/>
When email is received, save email attachments to OneDrive for Business.	<input type="radio"/>	<input type="radio"/>
Receive notifications when negative comments about the company are posted on Twitter.	<input type="radio"/>	<input type="radio"/>

- A. Mastered
- B. Not Mastered

**Answer:** A

#### Explanation:

Reference:

<https://flow.microsoft.com/en-us/galleries/public/templates/b923bbd04bda11e78896d10a96d3fac3/notify-the-tea> <https://flow.microsoft.com/en-us/galleries/public/templates/65ceb79430ef4956a0855fbe09249cdf/save-office-36> <https://flow.microsoft.com/en-us/blog/get-notified-of-negative-posts/>

#### NEW QUESTION 143

- (Exam Topic 5)

A company builds and sells residential apartments. The company uses Dynamics 365 Sales to manage sales opportunities.

Management must receive notifications on their mobile devices when sales opportunities are created. You need to select recommend Power Platform components to address the requirements.

Which two components should you recommend? Each correct answer presents part of the solution. NOTE: Each selection is worth one point.

- A. Common Data Service connector
- B. Power BI
- C. Power Automate
- D. AI Builder

**Answer:** AC

#### Explanation:

Reference:

<https://www.powerobjects.com/blog/2019/04/05/flow-approval-process/>

#### NEW QUESTION 148

- (Exam Topic 5)

A company plans to use Microsoft Flow to automate tasks.



Match each flow type to its function. To answer, drag the appropriate flow type from the column on the left to its description on the right. Each option may be used once, more than once, or not at all.  
NOTE: Each correct match is worth one point.

Flow types	Answer Area		Flow type
automated		Description	
business process	a flow that runs after it is triggered by an event		Flow type
scheduled	a flow that guides a user through a set of tasks		Flow type
instant	a flow that runs after a specified number of days		Flow type
	a flow that allows you to start tasks on-demand		Flow type

- A. Mastered
- B. Not Mastered

Answer: A

Explanation:

Box 1: automated  
Automated flows start with an event or trigger, such as an email being received. These also support a multitude of actions in the 200+ Flow connectors.

Box 2: business process  
The business process flow that creates stages or screens that enforce a certain sequence of steps. It collects data from users for each step in the stage and can kick off automated workflows.

Box 3: scheduled  
Scheduled flows run regular reports that are sent out to a team and summarize everything that’s happened in the past week. This includes everything from simple daily scheduling to more complex scheduling like “every 3rd Monday.”

Box 4: instant  
An instant flow is triggered when you click a button inside of the Flow mobile app, SharePoint, Dynamics, PowerApps, or Excel that passes context directly into your flow.

Note: There are four different Flow types that you can choose from when starting out. You can create a scheduled flow, automated flow, instant flow, or a business process flow.

Reference:  
<https://www.avepoint.com/blog/office-365/office-365-automation/>

NEW QUESTION 150

- (Exam Topic 5)  
A company plans to create a workflow that periodically runs a Dynamics 365 action based on data in third-party cloud-based solutions. Which features should you use to create the workflow? To answer, select the appropriate options in the answer area.  
NOTE: Each correct selection is worth one point.

Action	Component
Ensure that Power Automate can interact with the third-party application.	<div>Triggers</div> <div>Logic Apps</div> <div>Connectors</div> <div>Gateways</div>
Periodically check for data changes in the third-party application.	<div>Actions</div> <div>Triggers</div> <div>Connectors</div> <div>DirectQuery</div>

- A. Mastered
- B. Not Mastered

Answer: A

Explanation:

Graphical user interface, text, application Description automatically generated

#### NEW QUESTION 153

- (Exam Topic 5)

A company uses Dynamics 365 Sales. Every time an opportunity is created, a Power Automate flow runs to email the opportunity to the sales manager. The sales manager leaves the company. You disable all accounts for the sales manager. You need to ensure that the new sales manager automatically receives email about opportunities when they are created. What should you do?

- A. Modify the flow and ensure that the correct manager's email is listed in the From field.
- B. Modify the flow and ensure that the correct manager's email is listed in the To field.
- C. Grant the new sales manager access to the departed sales manager's inbox.
- D. Modify the flow and ensure that the flow prompts the user to type the correct email for the To field.
- E. Create a flow that automatically forwards opportunity emails to the new sales manager.

**Answer:** E

#### Explanation:

Reference:

<https://www.inogic.com/blog/2020/09/power-automate-send-an-email-using-the-email-template-part-1/>

#### NEW QUESTION 155

- (Exam Topic 5)

A software company plans to use Power Automate.

For each of the following statements, select Yes if the statement is true. Otherwise, select No. NOTE: Each correct selection is worth one point.

Statement	Yes	No
You must certify custom connectors before users in other departments within your organization can use the connectors.	<input type="radio"/>	<input type="radio"/>
You must use Microsoft Azure API apps to create a public custom connector.	<input type="radio"/>	<input type="radio"/>

- A. Mastered
- B. Not Mastered

**Answer:** A

#### Explanation:

Reference:

<https://docs.microsoft.com/en-us/connectors/custom-connectors/share>

#### NEW QUESTION 157

- (Exam Topic 5)

You are building a Power Automate flow to manage sales.

The sales team saves quotes as PDF files to a Microsoft OneDrive folder. You create a Microsoft SharePoint list to help the sales team manage follow ups to quotes. You need to copy the customer name, phone number, and the amount of the potential sale from the sales quote and insert the data into the SharePoint list. Which AI Builder model should you use?

- A. key phrase extraction
- B. sentiment analysis OC.
- C. text recognition
- D. language detection

**Answer:** C

#### Explanation:

Reference:

<https://docs.microsoft.com/en-us/ai-builder/prebuilt-text-recognition>

#### NEW QUESTION 161

- (Exam Topic 5)

A project deadline is approaching. The project manager reports that there are still a number of critical tasks that are not complete.

You need to implement Power Automate to help streamline processes.

Which types of flows should you use? To answer, drag the appropriate flow types to the correct requirement. Each flow type may be used once, more than once, or not at all. You may need to drag the split bar between panes or scroll to view content.

NOTE: Each correct selection is worth one point.

Flow types	Answer Area	
	Requirement	Flow type
<div>automated</div>	Ensure that all of the steps for completing tasks are consistently followed by all team members.	<div></div>
<div>instant</div>	Allow users to send an email to the project lead whenever a task is completed.	<div></div>
<div>scheduled</div>	Automatically send a list of completed tasks at the end of each week.	<div></div>
<div>business process</div>		

- A. Mastered
- B. Not Mastered

Answer: A

Explanation:

Reference:  
<https://docs.microsoft.com/en-us/power-automate/business-process-flows-overview> <https://docs.microsoft.com/en-us/power-automate/get-started-logic-flow>  
<https://docs.microsoft.com/en-us/power-automate/run-scheduled-tasks>

NEW QUESTION 163

- (Exam Topic 5)  
A company plans to synchronize data between Dynamics 365 Supply Chain management and Dynamics 365 Sales.  
For each of the following statements, select Yes if the statement is true. Otherwise, select No. NOTE: Each correct selection is worth one point.

Statement	Yes	No
You can implement a process-based integration by using the Data Integration feature.	<div></div>	<div></div>
You can use Microsoft Azure Data Migration to synchronize data between the apps.	<div></div>	<div></div>

- A. Mastered
- B. Not Mastered

Answer: A

Explanation:

Reference:  
<https://docs.microsoft.com/en-us/business-applications-release-notes/april19/cdm-data-integration/cds-data-integ>

NEW QUESTION 167

- (Exam Topic 5)  
A company uses Microsoft 365, SharePoint Online, and Dynamics 365 Sales.  
You need to recommend tools to build a solution that meets the following requirements: Synchronize data from an external Microsoft SQL Server instance.  
Send out of the box report automatically to specific company executives.  
Ensure that opportunities over a specified amount are approved by a sales manager.  
Which two tools or components should you recommend? Each correct answer presents part of the solution. NOTE: Each correct selection is worth one point.

- A. Microsoft Excel
- B. Microsoft Word
- C. Power Automate
- D. Common Data Service
- E. Microsoft Flow

Answer: DE

Explanation:

Reference:  
<https://docs.microsoft.com/en-us/power-platform/admin/data-integrator> <https://www.powerobjects.com/blog/2019/04/05/flow-approval-process/>

NEW QUESTION 171

- (Exam Topic 5)  
A company uses a third party application and an approval process via email. At the end of the month, the IT department enters the data into Microsoft Excel to create pivot charts.  
The Excel pivot charts must use the same data source as Dynamics 365 Field Service to generate charts and reports.

You need to recommend a solution.  
What should you recommend? To answer, select the appropriate configuration in the answer area. NOTE: Each correct selection is worth one point.

Requirement	Solution
Create an approval workflow.	<div><div></div><div><div>Dynamics 365 Workflow Notifications</div><div>Microsoft Outlook Integration</div><div>AI Builder</div><div>Microsoft Flow</div></div></div>
Connect to report data.	<div><div></div><div><div>Common Data Service and Power BI</div><div>Third-party from AppSource</div><div>Custom Code flat file integration</div><div>Dynamics 365 Field Service</div></div></div>

- A. Mastered
- B. Not Mastered

Answer: A

Explanation:

Box 1: Dynamics 365 Workflow notifications  
You can configure the system to send email messages to users when workflow-related events occur. Note:

- > Go to Navigation pane > Modules > System administration > Users > Users.
- > In the list, find and select the desired record.
- > On the Action pane, click User options.
- > Click the Workflow tab. Make sure that the Notifications section is expanded. In the Notifications section, you can specify how you want the user to be notified about workflow-related events.

Box 2: Dynamics 365 Field Service  
Supply Chain Management enables synchronization of business processes between Dynamics 365 Supply Chain Management and Dynamics 365 Field Service. The integration scenarios are configured by using extensible Data integrator templates and Common Data Service to enable the synchronization of business processes. Standard templates can be used to create custom integration projects, where additional standard and custom fields and entities can be mapped to adjust the integration and meet specific business needs.

Reference:  
<https://docs.microsoft.com/en-us/dynamics365/fin-ops-core/fin-ops/organization-administration/tasks/users-rece>

NEW QUESTION 176

- (Exam Topic 5)  
This question requires that you evaluate the BOLD text to determine if it is correct.  
A company requires that service representatives schedule customer visits every six months. Each service representative is required to enter a scheduled task for the next checkup as they are leaving a client site. A service representative wants to automate task entry by creating a business process flow that can be initiated from the service call screen on a phone.  
Review the underlined text. If it makes the statement correct, select “No change is needed.” If the statement is incorrect, select the answer choice that makes the statement correct.

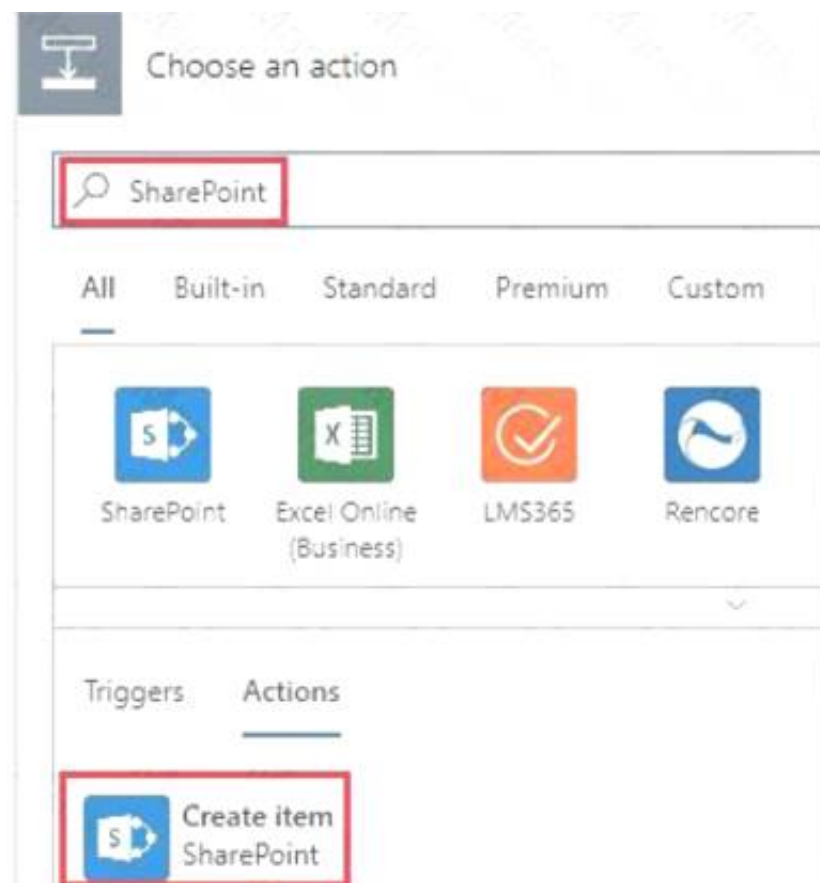
- A. No change is needed.
- B. a scheduled
- C. an instant
- D. an action

Answer: D

Explanation:

- Note: Create a flow (see step 6 below)
- \* 1. Sign in to PowerApps.
  - \* 2. In the left navigation bar, select Business logic, and then select Flows.
  - \* 3. In the upper-left corner of the My Flows page, select New, and then select Create from blank.
  - \* 4. Option to create a flow without using a template
- Near the bottom of the page that appears, select Search hundreds of connections and triggers.
- \* 5. In the search box, type PowerApps, and then select the PowerApps icon.
  - \* 6. Create a PowerApps trigger
  - \* 7. On the next page, select the PowerApps icon again, and then select New step.
  - \* 8. In the box that says Search connectors and actions, specify an action for your flow, as in this example:





Reference:

<https://docs.microsoft.com/en-us/powerapps/maker/canvas-apps/using-logic-flows>

#### NEW QUESTION 179

- (Exam Topic 5)

A company has a website. The website includes a form that allows the company to collect information about leads.

You need to set up an automated workflow to create leads in Dynamics 365 Sales when leads are created on the company's custom website.

What should you create?

- A. Task Flow
- B. Power Automate flow
- C. Dynamics 365 workflow
- D. Business Process Flow

**Answer: B**

**Explanation:**

Reference:

<https://trellispoint.com/create-crm-leads-using-microsoft-flow/>

#### NEW QUESTION 183

- (Exam Topic 5)

You plan to use Power Automate to perform data-management tasks when users interact with sales opportunities in Dynamics 365.

You need to identify the three types of events that can generate a trigger for the tasks.

Which three types of events should you identify? Each correct answer presents a complete solution. NOTE: Each correct selection is worth one point.

- A. when a record is displayed in a view
- B. when a record is deleted
- C. when a record is created
- D. when a record is updated
- E. when a record is read

**Answer: BCD**

**Explanation:**

Triggers like When a record is created, When a record is updated, and When a record is deleted initiate your flow within a few minutes of the event occurring. In rare cases, your flow can take up to 2 hours to trigger.

Reference:

<https://docs.microsoft.com/en-us/power-automate/connection-dynamics365>

#### NEW QUESTION 188

- (Exam Topic 6)

You are creating a Power Virtual Agents chatbot to help users search for available meeting rooms within a building.

The chatbot must meet the following requirements:

- > Allow users to initiate the chatbot by typing the phrase Help me Meeting Guru.
- > Provide meeting room capacity options of 1-4 people and 5-10 people.
- > End the chatbot session if the user attempts to schedule a meeting room for more than 10 people. You need to identify the actions to use.

Which actions should you use? To answer, select the appropriate options in the answer area.

NOTE: Each correct selection is worth one point.

Requirement	Action
Allow users to initiate the chatbot by typing the phrase <b>Help me Meeting Guru</b> .	<div><div></div><div>Call a fallback topic. Call an action. Create a question node. Create a trigger phrase.</div></div>
Provide meeting room capacity options of 1-4 people and 5-10 people.	<div><div></div><div>Call an action. Call a fallback topic. Create a condition. Create a question node.</div></div>
End the chatbot session when the user attempts to schedule meeting room for more than 10 people.	<div><div></div><div>Add a condition. Call an action. Configure a fallback topic. Create a trigger phrase.</div></div>

- A. Mastered  
B. Not Mastered

Answer: A

Explanation:

Graphical user interface, text, application, email Description automatically generated  
Reference:  
<https://docs.microsoft.com/en-us/power-virtual-agents/authoring-create-edit-topics>

NEW QUESTION 192

- (Exam Topic 6)

You create a Power Virtual Agents chatbot for use with Microsoft Teams. You are testing the chatbot. Testers report the following issues:

- > Changes that you make to the chatbot are not seen by testers.
- > When users enter the word refund the chatbot must ask the user the product for which they would like a refund. The chatbot does not ask the user for product information.

You need to determine what needs to be done to fix the issues.  
What should you do? To answer, select the appropriate options in the answer area.  
NOTE: Each correct selection is worth one point.

Missing changes	<div><div></div><div>Create a new chatbot. Publish the chatbot. Save the topic. Share the chatbot.</div></div>
Refund responses are not working as expected.	<div><div></div><div>Change security. Create a refund topic. Create a refund chatbot.</div></div>

- A. Mastered  
B. Not Mastered

Answer: A

Explanation:

Graphical user interface, text, application, chat or text message Description automatically generated  
Reference:  
<https://docs.microsoft.com/en-us/power-virtual-agents/publication-fundamentals-publish-channels>

NEW QUESTION 195

- (Exam Topic 6)  
You are developing a Power Virtual Agents chatbot for a company.  
For each of the following statements, select Yes if the statement is true. Otherwise, select No.  
NOTE: Each correct selection is worth one point.

Statement	Yes	No
You must create a topic to specify how a chatbot responds to a user.	<input type="radio"/>	<input type="radio"/>
You can use prebuilt entities or custom defined entities.	<input type="radio"/>	<input type="radio"/>

- A. Mastered
- B. Not Mastered

Answer: A

**Explanation:**  
Graphical user interface, text, application Description automatically generated  
Reference:  
<https://docs.microsoft.com/en-us/power-virtual-agents/authoring-fundamentals> <https://docs.microsoft.com/en-us/power-virtual-agents/advanced-entities-slot-filling>

NEW QUESTION 198

- (Exam Topic 6)  
You are creating a Power Virtual Agents chatbot for a company.  
Which component types should you use for each scenario? To answer, select the appropriate options in the answer area.  
NOTE: Each correct selection is worth one point.

Scenario	Component type
The chatbot needs to capture of the user id for authentication.	<div>Topic Entity Action</div>
A customer asks a question that needs to be handed off to a live Customer Support representative.	<div>Topic Entity Action</div>

- A. Mastered
- B. Not Mastered

Answer: A

**Explanation:**  
Graphical user interface, application Description automatically generated  
Reference:  
<https://docs.microsoft.com/en-us/power-virtual-agents/fundamentals-what-is-power-virtual-agents> <https://www.c-sharpcorner.com/article/get-started-with-bot-development-with-microsoft-power-virtual-agent-ste>

NEW QUESTION 203

- (Exam Topic 6)  
You are planning to allow members of your team to test your chatbot. You must ensure this is done in a secure way.  
A team member named User1 must test the chatbot. You need to ensure that User1 can complete testing. What should you do?

- A. Sign in to the authoring environment as the chatbot author.
- B. Sign in to Microsoft Azure DevOps as the chatbot author.
- C. Sign in to Microsoft Azure DevOps as User1.
- D. Sign in to the authoring environment as User1.

Answer: A

NEW QUESTION 208

- (Exam Topic 6)  
You are building a Power Virtual Agents chatbot for a company.  
You are working with an existing topic and would like to call an action. Which technology is available to perform the action?

- A. Power Virtual Agent Entity
- B. Power Apps

- C. Power Automate
- D. Power BI

Answer: C

Explanation:

Reference:  
<https://docs.microsoft.com/en-us/power-virtual-agents/advanced-flow>

NEW QUESTION 212

- (Exam Topic 7)

A company is building an interactive chatbot to answer questions about products and product warranties You need to create conversation paths re questions about product warranties. Which tool should you use?

- A. Azure Bot Framework
- B. Power Platform admin center
- C. Conversation node
- D. Authoring canvas
- E. Power Virtual Agents portal

Answer: E

NEW QUESTION 213

- (Exam Topic 7)

A company uses Microsoft 365, Power Platform, and Dynamics 365. You do not assign permissions to any licensed users. Users are able to create and edit Power Apps canvas apps. In which environment are users creating and editing the apps?

- A. Production
- B. Test
- C. Sandbox

Answer: B

NEW QUESTION 217

- (Exam Topic 7)

A business uses a form to collect information. You create a business process flow for the form. The top of the form must display where the user is in the process. You need to identify what to configure at the top of the form. What should you identify?

- A. Step
- B. Stage
- C. Branch
- D. Workflow

Answer: B

NEW QUESTION 221

- (Exam Topic 7)

You are creating a Power Apps solution for a company that manufactures bicycles. The company has The following requirements:

- A vendor uploads a Microsoft Excel workbook to the company each week. The workbook contains lists of parts and their current prices. You must automatically Import the data into Microsoft Dataverse as soon as the workbook is uploaded. You must send specific users an alert when new files are uploaded.
- Synchronize customer data with a proprietary accounting database when a user selects a button on the Account form.

You need to recommend the trigger types to use to meet the requirements.

Which trigger types should you use? To answer, drag the appropriate trigger types to the correct requirements. Each trigger type may be used once, more than once, or not at all. You may need to drag the split bar between panes or scroll to view content.

NOTE: Each correct selection is worth one point.

Trigger types

Push trigger

Polling trigger

Triggers for scheduled flows

Triggers for business process flow

Answer Area

Requirement	Trigger type
Send a notification when an Excel workbook is uploaded.	<div>Trigger type</div>
Synchronize customer data with a proprietary accounting database.	<div>Trigger type</div>

- A. Mastered
- B. Not Mastered

Answer: A

Explanation:



Trigger types	Requirement	Trigger type
Push trigger	Send a notification when an Excel workbook is uploaded.	Push trigger
Polling trigger	Synchronize customer data with a proprietary accounting database.	Triggers for business process flow
Triggers for scheduled flows		
Triggers for business process flow		

NEW QUESTION 222

- (Exam Topic 7)

You need to create a mobile application which will allow sales associates to enter customer sales leads. Which four actions should you perform in sequence? To answer, move the appropriate actions from the list of actions to the answer area and arrange them in the correct order.

Actions	Answer area
Save the app.	
Add components to the app.	
Publish the app.	
Add flows to the app.	
Go to the Office 365 admin center.	
Create a new Power Apps app.	

- A. Mastered
- B. Not Mastered

Answer: A

Explanation:

Reference:  
<https://docs.microsoft.com/en-us/powerapps/maker/model-driven-apps/build-first-model-driven-app>

NEW QUESTION 226

- (Exam Topic 7)

You are authoring a Power Virtual Agents chatbot for a company for each of the following statements, select Yes if the statement is true. Otherwise, select No. NOTE: Each correct selection is worth one point.

Statement	Yes	No
When escalating to a live person from a chatbot, the customer must restate their issue and other information collected.	<input type="radio"/>	<input type="radio"/>
You can customize the greeting topic for every chatbot that you author.	<input type="radio"/>	<input type="radio"/>

- A. Mastered
- B. Not Mastered

Answer: A

Explanation:

Text, letter Description automatically generated

NEW QUESTION 231

- (Exam Topic 7)

You are using Power Virtual Agents to create a chatbot for your Power Apps portal. You need the chatbot to start from the beginning of the conversation if user input is unrecognized. What should you configure?

- A. Trigger
- B. Error message
- C. Fallback topic
- D. At features

Answer: C

NEW QUESTION 234

- (Exam Topic 7)

A company is creating a canvas app to track and analyze customer visits to their retail stores. Data about customer visits is stored on-premises at each retail store

location. The app must display data about customer visits when users launch the app. You need to ensure that the data is available for consumption by the app. Which tool should you use?

- A. Data gateway
- B. Data source
- C. Connector
- D. Microsoft Dataverse
- E. Power Automate

Answer: A

NEW QUESTION 236

- (Exam Topic 7)

A company is evaluating ways to connect Power Platform apps to external services to perform complex activities. For each of the following statements, select Yes if the statement is true. Otherwise, select No. NOTE: Each correct selection is worth one point.

Answer Area

Statement	Yes	No
You can create a canvas app that scans and parses documents using Azure Cognitive Services and then adds the appropriate information to Dynamics 365 Sales.	<input type="radio"/>	<input type="radio"/>
You can create a canvas app that uses Azure Cognitive Services to read incident records and identify tickets that need to be escalated based on sentiment score.	<input type="radio"/>	<input type="radio"/>

- A. Mastered
- B. Not Mastered

Answer: A

Explanation:

Yes Yes

NEW QUESTION 237

- (Exam Topic 7)

A team of five people plans to create Power Platform solutions for a company. Team member plan to initially use Power Platform trail instances to create solutions. Team members have questions about how many Power Platform instances and Common Data Service databases they need. You need to respond to the team. How should you respond? To answer, drag the appropriate responses to the correct questions. Each response may be used once, more than once, or not at all. You may need to drag the split bar between panes or scroll to view content

Responses

One per user

One per tenant

One per environment

One per Power Platform app

Answer Area

Question	Response
How many trial instances must the team create?	<div>Response</div>
How many Microsoft Dataverse databases must the team create?	<div>Response</div>

- A. Mastered
- B. Not Mastered

Answer: A

Explanation:

Graphical user interface, text, application, Word, email Description automatically generated

NEW QUESTION 239

- (Exam Topic 7)

You are creating a Power Automate solution. You need to select a Power Automate control action for each function in the flow. Which control action should you use? To answer, drag the appropriate control actions to the correct functions. Each control action may be used once, more than once, or not at all. You may need to drag the split bar between panes or scroll to view content. NOTE: Each correct selection is worth one point.

Answer Area

Control actions	Function	Control action
Do until	Continue performing a set of actions unless a condition becomes true. Allow multiple branches to be created based on a set of options. Allow two branches to be created based on a true/false condition.	
Apply to each		
Switch		
Condition		

- A. Mastered
- B. Not Mastered

Answer: A

Explanation:  
Graphical user interface, text, application Description automatically generated

NEW QUESTION 244

- (Exam Topic 7)  
A company is implementing Power BI to track sales. Each of the company’s regions has specific quarterly and yearly sales goals. You need to build a Power BI dashboard for various reporting requirements. Which chart types should you use? To answer, drag the appropriate chart types to the correct requirements. Each chart type may be used once, more than once, or not at all. You may need to drag the split bar between panes or scroll to view content. NOTE: Each correct selection is worth one point.

Chart types	Requirement	Chart type
Donut	Show the quarterly sales total to date in relation to the sales goal.	
KPIs	View the sales trend by month of the sales year to date for all regions.	
Line chart	View the year-to-date sales as a percentage by region.	
Matrix		

- A. Mastered
- B. Not Mastered

Answer: A

Explanation:  
Box 1: KPIs  
A Key Performance Indicator (KPI) is a visual cue that communicates the amount of progress made toward a measurable goal.  
Box 2: Line chart  
Line charts emphasize the overall shape of an entire series of values, usually over time. Box 3: Donut  
Doughnut charts are similar to pie charts. They show the relationship of parts to a whole. The only difference is that the center is blank and allows space for a label or icon.  
Reference:  
<https://docs.microsoft.com/en-us/power-bi/visuals/power-bi-visualization-types-for-reports-and-q-and-a>

NEW QUESTION 246

- (Exam Topic 7)  
You need to implement Microsoft Business Applications along with the Microsoft Power Platform. Which three Microsoft products are pan of the Power Platform? Each correct answer presents a complete solution. NOTE: Each correct selection is worth one point.

- A. Power Apps
- B. Azure Active Directory
- C. Power Automate
- D. Azure Machine learning

E. Power BI

**Answer:** ACE

#### NEW QUESTION 248

- (Exam Topic 7)

A company plans to use Power Platform to build apps that address specific business challenges. You need to recommend the appropriate types of Power Apps to use. What should you recommend? To answer, select the appropriate options in the answer area.

NOTE: Each correct selection is worth one point

**Answer Area**

Scenario	Tool
Field technicians need a mobile app to capture the location and the image of defective products.	<input type="checkbox"/> Canvas app <input type="checkbox"/> Power Apps Portals <input type="checkbox"/> Common Data Service
Sales representatives need to see different views and dashboards in the sales app.	<input type="checkbox"/> Canvas app <input type="checkbox"/> Model-driven app <input type="checkbox"/> Power Apps Portals

A. Mastered

B. Not Mastered

**Answer:** A

**Explanation:**

**Answer Area**

Scenario	Tool
Field technicians need a mobile app to capture the location and the image of defective products.	<input checked="" type="checkbox"/> Canvas app <input type="checkbox"/> Power Apps Portals <input type="checkbox"/> Common Data Service
Sales representatives need to see different views and dashboards in the sales app.	<input checked="" type="checkbox"/> Canvas app <input checked="" type="checkbox"/> Model-driven app <input type="checkbox"/> Power Apps Portals

#### NEW QUESTION 250

- (Exam Topic 7)

A company is implementing Power Automate to streamline operations.

The head of customer support relations needs a Power Automate flow that texts a manager when an email meets the following criteria:

- The email is sent as high priority.
- The email is from a customer.

You need to identify how the flow's decision point will know whether the criteria are met. What should you use?

- A. data operations
- B. expressions
- C. variables
- D. actions
- E. triggers

**Answer:** C

#### NEW QUESTION 255

- (Exam Topic 7)

A company is building apps to support their business operations. The apps will use connectors to access data from several data sources and respond to a number of events generated by components.

Which two operations can you use for connectors? Each correct answer presents part of the solution. NOTE: Each correct selection is worth one point.

- A. Triggers
- B. Plug-ins
- C. Actions
- D. Gateways

**Answer:** CD

#### NEW QUESTION 260

- (Exam Topic 7)

An organization plans to create Power Platform solutions and is evaluating Microsoft Dataverse. Instructions: For each of the following statements, select Yes if the statement is true. Otherwise, select No. NOTE: Each correct selection is worth one point.



	Yes	No
Virtual table data is stored in Microsoft Dataverse.	<input type="radio"/>	<input type="radio"/>
Columns are used in forms and views.	<input type="radio"/>	<input type="radio"/>

- A. Mastered  
 B. Not Mastered

**Answer:** A

**Explanation:**

Graphical user interface, text Description automatically generated with medium confidence

Box 1: No

A virtual table is a definition of a table in the Dataverse platform without the associated physical tables for table instances created in the Dataverse database. Instead during runtime, when a table instance is required, its state is dynamically retrieved from the associated external system.

Box 2: Yes

Columns in forms: In the form designer, drag any columns from the Columns Explorer into the section on the form.

Reference:

<https://docs.microsoft.com/en-us/powerapps/developer/data-platform/virtual-entities/get-started-ve>

**NEW QUESTION 265**

- (Exam Topic 7)

A company uses a model-driven app for its sales team.

You must customize a form to meet the following requirements:

- If a check box is checked, a hidden field must appear.
- The form must display a list of customers and fields about customers.

You need to identify the components a developer must configure to meet the requirements. What should you identify?

Components	Answer Area	Requirement	Component
Column		Hidden field appears	Component
View		List of customers and fields displays	Component
Form			
Table			

- A. Mastered  
 B. Not Mastered

**Answer:** A

**Explanation:**

Form Table

**NEW QUESTION 266**

- (Exam Topic 7)

A company is creating a chatbot to replace a frequently asked questions (FAQ) site

You must perform step-by-step testing for all scenarios that are part of a complex user interaction that includes multiple topics. Testers must be able to see the workflow while interacting with the chatbot.

You need to test the chatbot. What should you do?

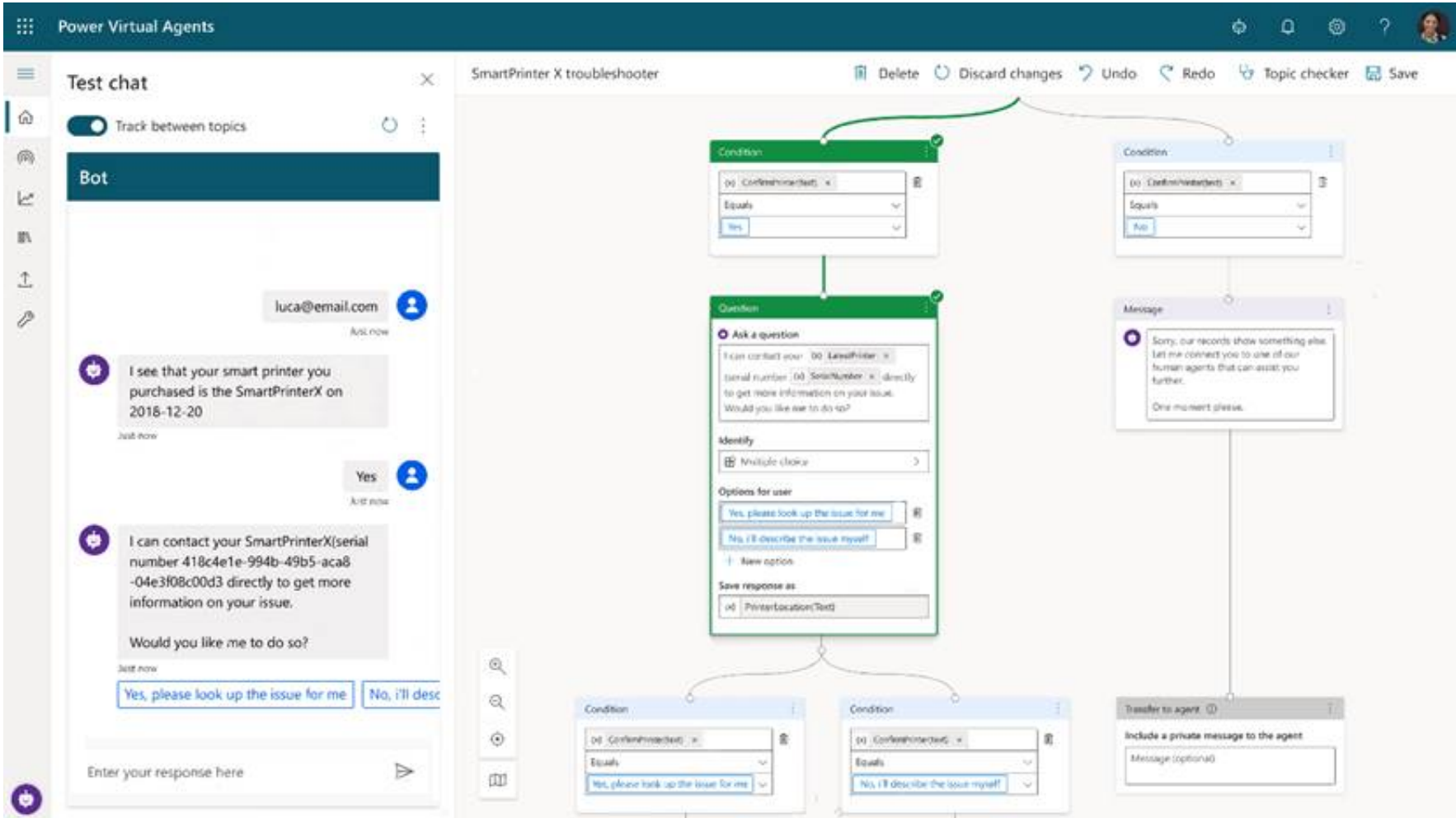
- A. Publish the chatbot and test it in the demo website.  
 B. Use the chatbot designer to test the chatbot  
 C. View analytics for a chatbot conversation.  
 D. Publish the chatbot and test it in any channel

**Answer:** B

**Explanation:**

Test and maintain chatbots through an incredibly easy-to-use graphical interface. Recognize and act on dozens of common entities in the user's conversation such as colors, currencies, ages, dates and times, or create your own, and store user information in variables and use them to branch or create complex conversations.

<https://powervirtualagentsblogcdn.azureedge.net/wp-content/uploads/2019/11/Tracking.png>



NEW QUESTION 268

- (Exam Topic 7)

A company creates the following Microsoft Power Platform environment to manage a custom model-driven app:

- Developer
- Production

You have been granted the System Administrator security role to the development environment and a custom security role named Project Team Member to the production environment Instructions: For each of the following statements, select Yes if the statement is true. Otherwise, select No.

Statements	Yes	No
You will not be able to access the app until the System Administrator security role is assigned to the app in the development environment.	<input type="radio"/>	<input type="radio"/>
You can delete records in the development environment.	<input type="radio"/>	<input type="radio"/>
You will not be able to access the app until the Project Team Member security role is assigned to the app in the production environment.	<input type="radio"/>	<input type="radio"/>

- A. Mastered  
B. Not Mastered

Answer: A

Explanation:

Graphical user interface, text, application Description automatically generated

NEW QUESTION 271

- (Exam Topic 7)

For each of the following statements, select Yes if the statement is true. Otherwise, select No. NOTE: Each correct selection is worth one point.

Statements	Yes	No
Sharing a model-driven app with a user is the only security required for users to access the app.	<input type="radio"/>	<input type="radio"/>
You can change the order of the columns in a view once you have created and published a view.	<input type="radio"/>	<input type="radio"/>
System views must be shared for everyone to view them.	<input type="radio"/>	<input type="radio"/>

- A. Mastered  
B. Not Mastered

Answer: A

Explanation:  
Yes, No, No

NEW QUESTION 275

- (Exam Topic 7)

You plan to use Power Automate to monitor what people are saying about your company's products. You store the feedback for research and development purposes.

You need to recommend Power Automate components to use for the solution.

To answer drag the appropriate components to the correct requirements. Each component may be used once, more than once, or not at all. You may need to drag the split Car between panes or scroll to view content.

NOTE: Each correct selection is worth one point

Components

action

expression

service

trigger

Answer Area

Requirement

Retrieve the top five posts from your company's Facebook page.  
Enter the resulting posts into the product database.  
Combine author and link fields into a single field.  
Run a flow every hour.

Component

Component

Component

Component

Component

- A. Mastered  
B. Not Mastered

Answer: A

Explanation:

Components

action

expression

service

trigger

Answer Area

Requirement

Retrieve the top five posts from your company's Facebook page.  
Enter the resulting posts into the product database.  
Combine author and link fields into a single field.  
Run a flow every hour.

Component

action

action

expression

trigger

NEW QUESTION 277

- (Exam Topic 7)

You are creating a Power Automate flow.

You need to retrieve data from several sources deluding Microsoft Excel, Azure Data lake, and GitHub.

What should you use? To answer, drag the appropriate components to the correct data sources. Each component may be used once, more than once, or not at all. You may need to drag the split bar between panes or scroll to view content.

NOTE: Each correct selection is worth one point

Components

Connector

Expression

Formula

Answer Area

Data source

Microsoft Excel  
Azure Data Lake  
GitHub

Component

- A. Mastered  
B. Not Mastered

Answer: A

Explanation:

Box 1: Formula

Reading an Excel document retrieves the data from the document, allowing it to be processed and modified in flows.

Read and extract data from an Excel document with the Read from Excel worksheet action.

Box 2: Connector

Azure Data Lake Store connector allows you to read and add data to an Azure Data Lake account. The Azure Data Lake connector is available for Power Automate.

Box 3: Expression Reference:

<https://docs.microsoft.com/en-us/learn/modules/pad-excel-automation/3-reading-excel-document> <https://docs.microsoft.com/en-us/connectors/azuredatalake/>

NEW QUESTION 281

- (Exam Topic 7)

You are using the Power BI service to view a visual on a report that has been shared with you. You need to add the visual to a dashboard as a tile. Which action should you perform?

- A. Copy
- B. Spotlight
- C. Export data
- D. Pin

Answer: D

NEW QUESTION 286

- (Exam Topic 7)

You are building Power BI visualizations for a team.

For each of the following statements, select Yes if the statement is true. Otherwise, select No. NOTE: Each correct selection is worth one point.

Answer Area

Statement	Yes	No
Power BI can only retrieve data from up to two different sources for each dashboard.	<input type="radio"/>	<input type="radio"/>
Power BI visualizations can be used in canvas apps and model driven apps.	<input type="radio"/>	<input type="radio"/>
Power BI can display charts and list boxes on dashboards.	<input type="radio"/>	<input type="radio"/>

- A. Mastered
- B. Not Mastered

Answer: A

Explanation:

Yes

Yes Yes

NEW QUESTION 287

- (Exam Topic 7)

You are implementing a solution for an animal hospital.

The animal hospital must contact owners regarding their pets.

You need to model the owner and pet object information by using Microsoft Dataverse. The solution must minimize the amount of customization required:

- owner first name
- owner last name
- owner email address
- owner date of birth
- pet name
- pet breed
- pet owner

Which component should you use? To answer, drag the appropriate components to the correct data. Each component may be used once, more than once, or not at all. You may need to drag the split bar between panes or scroll to view content. NOTE: Each correct selection is worth one point.

Components

Answer Area

Data	Component
The owner object	Component
The pet object	Component
The owner's email address	Component
Reference a pet record as belonging to an owner record	Component

- A. Mastered
- B. Not Mastered

Answer: A

Explanation:

Components

Answer Area

Data	Component
The owner object	Column
The pet object	Column
The owner's email address	Column
Reference a pet record as belonging to an owner record	Standard Dataverse table

NEW QUESTION 290



- (Exam Topic 7)

instructions: For each of the following statements, select Yes if the statement is true. Otherwise, select No. NOTE: Each correct selection is worth one point.

Answer Area

Statements	Yes	No
A Microsoft Power Platform environment must contain a Microsoft Dataverse database.	<input type="radio"/>	<input type="radio"/>
An app created in an environment can only connect to the data sources that are deployed in the same environment.	<input type="radio"/>	<input type="radio"/>
Microsoft Dataverse for Teams environments are automatically created for all members of the team when you create a Microsoft Power Platform app in Microsoft Teams.	<input checked="" type="radio"/>	<input type="radio"/>

- A. Mastered
- B. Not Mastered

Answer: A

Explanation:

Answer Area

Statements	Yes	No
A Microsoft Power Platform environment must contain a Microsoft Dataverse database.	<input checked="" type="radio"/>	<input type="radio"/>
An app created in an environment can only connect to the data sources that are deployed in the same environment.	<input checked="" type="radio"/>	<input type="radio"/>
Microsoft Dataverse for Teams environments are automatically created for all members of the team when you create a Microsoft Power Platform app in Microsoft Teams.	<input checked="" type="radio"/>	<input type="radio"/>

NEW QUESTION 295

- (Exam Topic 7)

You are creating a canvas app to enable users to order tickets. You create an input field for users to input the number of tickets to order. Users must order a maximum of four tickets and a minimum of two tickets. If a user enters a number except 2, 3, or 4, the input field must display in red. If a user enters the numbers 2, 3, or 4, the input field must display in green. You need to color the input field based on the user input. What should you use?

- A. formula
- B. calculated column
- C. gallery
- D. connector

Answer: A

NEW QUESTION 297

- (Exam Topic 7)

For each of the following statements, select Yes if the statement is true, Otherwise, select No. NOTE: Each correct selection is worth one point.

Answer Area

Statement	Yes	No
Power Apps apps can run only on mobile devices.	<input type="radio"/>	<input type="radio"/>
Power Apps can run only with Dynamic 365 products.	<input type="radio"/>	<input type="radio"/>
If a user runs a Power Apps app that accesses information to which the user does not have access, the app grants the user permissions.	<input type="radio"/>	<input type="radio"/>

- A. Mastered
- B. Not Mastered

Answer: A

Explanation:

Answer Area

Statement	Yes	No
Power Apps apps can run only on mobile devices.	<input type="radio"/>	<input checked="" type="radio"/>
Power Apps can run only with Dynamic 365 products.	<input type="radio"/>	<input checked="" type="radio"/>
If a user runs a Power Apps app that accesses information to which the user does not have access, the app grants the user permissions.	<input checked="" type="radio"/>	<input type="radio"/>

NEW QUESTION 298

- (Exam Topic 7)

You create a multi-page Power BI report for an organization. You must enable salespeople in the organization to use the report to view data relevant to their sales region only. You need to enable security for the report. What should you use?

- A. Microsoft Trust Center
- B. row-level security
- C. data loss prevention policies
- D. sensitivity labels
- E. Microsoft Azure Active Directory

Answer: B

NEW QUESTION 301

- (Exam Topic 7)

You create a model-driven app. You need to determine which customization can be made to table forms.

Statements	Yes	No
A form can be made visible only to users who have been assigned a specific security role.	<input type="radio"/>	<input type="radio"/>
The label of a column on a form can be different than the column display name.	<input type="radio"/>	<input type="radio"/>
You can edit the system view named Quick Find to change the title and subtitle displayed for records in a look-up column.	<input type="radio"/>	<input type="radio"/>

- A. Mastered
- B. Not Mastered

Answer: A

Explanation:

Graphical user interface, text, application, email Description automatically generated

NEW QUESTION 302

- (Exam Topic 7)

You are building Power BI visualizations for a team.

For each of the following statements, select Yes if the statement is true. Otherwise, select No.

NOTE: Each correct selection is worth one point.

Statements	Yes	No
Power BI can only retrieve data from up to two different sources for each dashboard.	<input type="radio"/>	<input type="radio"/>
Power BI visualizations can be used in canvas apps and model driven apps.	<input type="radio"/>	<input type="radio"/>
Power BI can display charts and list boxes on dashboards.	<input type="radio"/>	<input type="radio"/>

- A. Mastered
- B. Not Mastered

Answer: A

Explanation:

Reference:

<https://docs.microsoft.com/en-us/power-bi/visuals/power-bi-visualization-types-for-reports-and-q-and-a> <https://docs.microsoft.com/en-us/power-bi/visuals/power-bi-visualization-slicers>

NEW QUESTION 305

- (Exam Topic 7)

A user is creating their first Power Apps canvas app.

Which types of controls should you use for each scenario? To answer, select the appropriate options in the answer area.

NOTE: Each correct selection is worth one point.

Answer Area

Scenario	Control
View the date, time, and location of upcoming internal meetings.	Meeting-screen template Gallery List box
Create a meeting request from within the app.	Meeting-screen template Gallery List box
Drill down into customer contact records in Dynamics 365 Sales to view a photo of a customer you are meeting.	Image People-screen template Add picture

- A. Mastered  
B. Not Mastered

Answer: A

Explanation:  
Answer Area

Scenario	Control
View the date, time, and location of upcoming internal meetings.	Meeting-screen template Gallery List box
Create a meeting request from within the app.	Meeting-screen template Gallery List box
Drill down into customer contact records in Dynamics 365 Sales to view a photo of a customer you are meeting.	Image People-screen template Add picture

NEW QUESTION 310

- (Exam Topic 7)

You plan to create a model-driven app for a company that sells plants and garden supplies. The app must meet the following requirements:

- Automatically send email to a customer when a record is modified.
- Ensure that all sales people follow the same steps when processing sales.

You need to create Power Automate flows for the app.

Flow types

Button

Automatic

Scheduled

Business Process

Answer Area

Requirement	Flow type
Send email to customers.	Flow type
Ensure that salespeople follow the same steps.	Flow type

- A. Mastered  
B. Not Mastered

Answer: A

Explanation:

Flow types

Button

Automatic

Scheduled

Business Process

Answer Area

Requirement	Flow type
Send email to customers.	Automatic
Ensure that salespeople follow the same steps.	Business Process

NEW QUESTION 315

- (Exam Topic 7)

User1 creates several Power BI dashboards for a company. User1 shares a dashboard with User2 who works for another company. User2 reports that she is able to view the dashboard User2 forwards the email containing the dashboard sharing link that she received to User3. User3 reports that he receives an error message when he selects the link to view the dashboard. User3 can view a dashboard that he has created. You need to determine why User 3 receives an error. What is the issue?

- A. Forwarding the email does not share the dashboard with User3.
- B. User3 is running an out-of-date version of Power BI and must upgrade to a newer version.
- C. User1 is signed in using the wrong organizational account for Power BID- User2 is signed in to the dashboard and must sign out before User3 can sign in

Answer: A

NEW QUESTION 319

- (Exam Topic 7)

A company plans to build solutions by using Power Platform technologies. For each of the following statements, select Yes if the statement Is true. Otherwise, select No. NOTE: Each correct selection is worth one point.

Answer Area		
Statement	Yes	No
Power Virtual Agents chat data is saved unless it is deleted by the customer after a chat session.	<input type="radio"/>	<input type="radio"/>
Power Automate flows operate with administrative privileges at all times.	<input type="radio"/>	<input type="radio"/>

- A. Mastered
- B. Not Mastered

Answer: A

Explanation:

Box 1: Yes  
By default, you can download up to seven days of bot conversation transcript sessions from the past 30 days directly from the Power Virtual Agents portal.  
Box 2: No  
You can set the permissions for a Flow. Reference:  
<https://docs.microsoft.com/en-us/power-virtual-agents/analytics-sessions> <https://docs.microsoft.com/en-us/connectors/microsoftflowforadmins>

NEW QUESTION 321

- (Exam Topic 7)

You have a Power BI report with a page named RevReceived. The page shows gross revenue received by your company. You want to create an almost identical page that shows net revenue instead of gross revenue. What should you do? To answer, select the appropriate option in the answer area.

Answer Area	
You should	<div><div>copy the visuals from RevReceived to a new page.</div><div><b>duplicate the RecReceived page and update the duplicate copy.</b></div><div>import the RevReceived page.</div><div>modify the RevReceived page.</div></div>

- A. Mastered
- B. Not Mastered

Answer: A

Explanation:

Answer Area	
You should	<div><div>copy the visuals from RevReceived to a new page.</div><div><b>duplicate the RecReceived page and update the duplicate copy.</b></div><div>import the RevReceived page.</div><div>modify the RevReceived page.</div></div>

NEW QUESTION 322

- (Exam Topic 7)

For each of the following statements, select Yes if the statement is true. Otherwise, select No. NOTE: Each correct selection is worth one point.



Answer Area

Statement	Yes	No
Security roles are modified in Microsoft Azure Active Directory.	<input type="radio"/>	<input type="radio"/>
Security Roles are assigned to each table.	<input type="radio"/>	<input type="radio"/>

- A. Mastered  
B. Not Mastered

Answer: A

Explanation:

Answer Area

Statement	Yes	No
Security roles are modified in Microsoft Azure Active Directory.	<input type="radio"/>	<input checked="" type="radio"/>
Security Roles are assigned to each table.	<input checked="" type="radio"/>	<input type="radio"/>

NEW QUESTION 324

- (Exam Topic 7)

A medical office has a model -driven app that uses Common Data Service.

You plan to create a screen that allows users to capture information about doctors. The screen must provide users the ability to enter or select the following information;

- > a place to enter doctor- profile data that is not pan of the account table or the contact table.
- > a place to enter the doctor's specialty in the profile form.
- > a column for insurance with the ability to pick one of 10 different insurance companies. You need to store the captured data in Common Data Service.

What should you use to store the data? To answer, drag the appropriate components to the correct requirements. Each component may be used once, more than once, or not at all You may need to drag the split bar between panes or scroll to view content.

NOTE: Each correct selection is worth one point.

Options

Entity

Field

Option set

Record

Answer Area

Requirement	Option
Store additional doctor profile data.	Option
Store information about the doctor's specialty.	Option
Select an insurance company.	Option

- A. Mastered  
B. Not Mastered

Answer: A

Explanation:

Graphical user interface, text, application Description automatically generated

NEW QUESTION 326

- (Exam Topic 7)

For each of the following statements, select Yes if the statement is true. Otherwise, select No. NOTE: Each correct selection is worth one point.

Statement	Yes	No
Sharing a model-driven app and sharing a canvas app both send an email with the link to the app to the users.	<input type="radio"/>	<input type="radio"/>
Administrators assign Power Platform security roles and permissions identically for canvas apps, model-driven apps, and shared apps.	<input type="radio"/>	<input type="radio"/>
You must publish both personal and system views before a user may consume them.	<input type="radio"/>	<input type="radio"/>

- A. Mastered
- B. Not Mastered

Answer: A

Explanation:  
Yes, No, No

NEW QUESTION 331

- (Exam Topic 7)  
You create a model-driven app for a department.  
You need to make the model-driven app available to other department members. Which two methods should you use? Each correct answer presents a complete solution.  
NOTE: Each correct selection is worth one point.

- A. Publish the app to AppSource.
- B. Send the application's Web URL to other team members by email.
- C. Deploy the application to other user's instances through PowerShell.
- D. Use the Share feature in the Power Apps designer.

Answer: AD

NEW QUESTION 335

.....

## Thank You for Trying Our Product

### We offer two products:

1st - We have Practice Tests Software with Actual Exam Questions

2nd - Questions and Answers in PDF Format

### PL-900 Practice Exam Features:

- \* PL-900 Questions and Answers Updated Frequently
- \* PL-900 Practice Questions Verified by Expert Senior Certified Staff
- \* PL-900 Most Realistic Questions that Guarantee you a Pass on Your First Try
- \* PL-900 Practice Test Questions in Multiple Choice Formats and Updates for 1 Year

**100% Actual & Verified — Instant Download, Please Click**  
**[Order The PL-900 Practice Test Here](#)**