

NSE4_FGT-7.2 Dumps

Fortinet NSE 4 - FortiOS 7.2

https://www.certleader.com/NSE4_FGT-7.2-dumps.html



NEW QUESTION 1

Refer to the exhibits.

Exhibit A shows a topology for a FortiGate HA cluster that performs proxy-based inspection on traffic. Exhibit B shows the HA configuration and the partial output of the get system ha status command.

Exhibit A Exhibit B

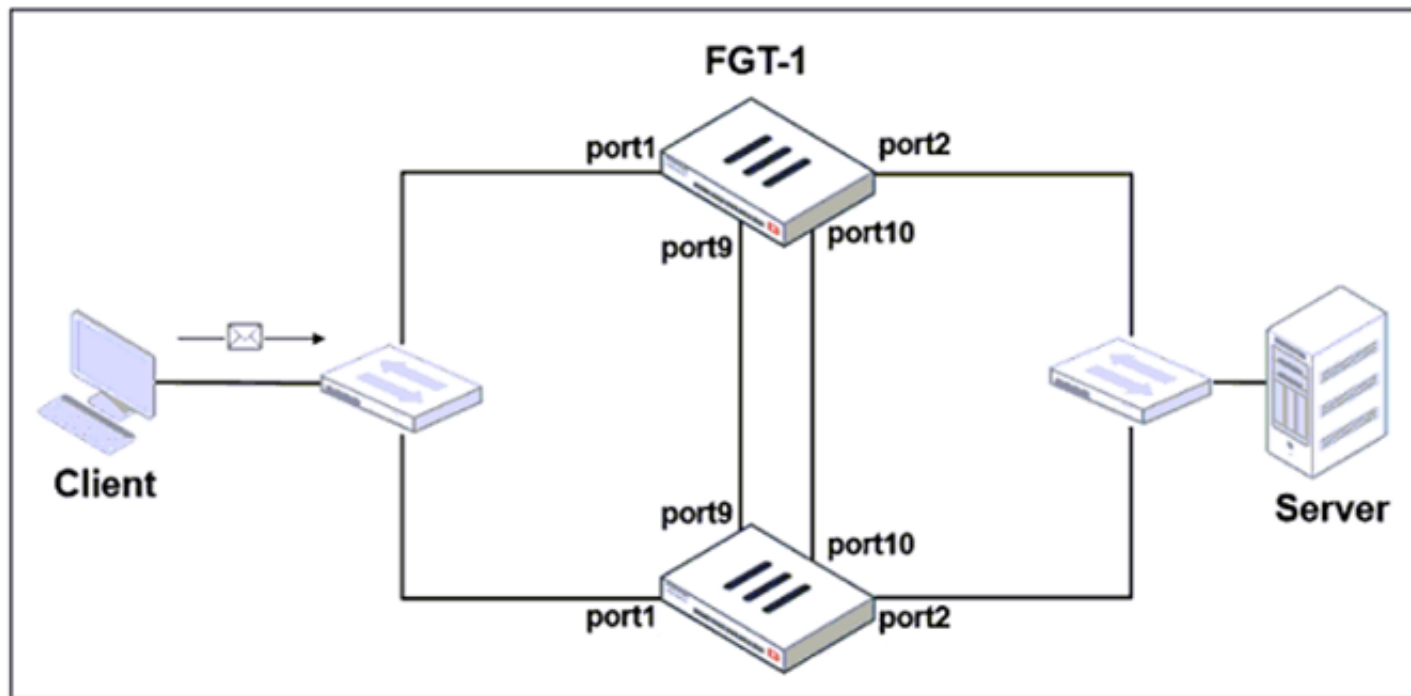


Exhibit A Exhibit B

```
set group-id 3
set group-name "NSE"
set mode a-a
set password *
set hbdev "port9" 50 "port10" 50
set session-pickup enable
set override disable
set monitor port3
end

# get system ha status
...
Primary      : FGT-2, FGVM010000065036, HA cluster index = 1
Secondary    : FGT-1, FGVM010000064692, HA cluster index = 0
number of vcluster: 1
vcluster 1: work 169.254.0.2
Primary: FGVM010000065036, HA operating index = 1
Secondary: FGVM010000064692, HA operating index = 0
```

Based on the exhibits, which two statements about the traffic passing through the cluster are true? (Choose two.)

- A. For non-load balanced connections, packets forwarded by the cluster to the server contain the virtual MAC address of port2 as source.
- B. The traffic sourced from the client and destined to the server is sent to FGT-1.
- C. The cluster can load balance ICMP connections to the secondary.
- D. For load balanced connections, the primary encapsulates TCP SYN packets before forwarding them to the secondary.

Answer: AD

Explanation:

FortiGate Infrastructure 7.2 Study Guide (p.317 & p.320): "To forward traffic correctly, a FortiGate HA solution uses virtual MAC addresses." "The primary forwards the SYN packet to the selected secondary. (...) This is also known as MAC address rewrite. In addition, the primary encapsulates the packet in an Ethernet frame type 0x8891. The encapsulation is done only for the first packet of a load balanced session. The encapsulated packet includes the original packet plus session information that the secondary requires to process the traffic."

NEW QUESTION 2

To complete the final step of a Security Fabric configuration, an administrator must authorize all the devices on which device?

- A. FortiManager
- B. Root FortiGate
- C. FortiAnalyzer
- D. Downstream FortiGate

Answer: B

NEW QUESTION 3

Refer to the exhibit.

```
1: date=2020-08-14 time=06:28:24 logid= "0316013056" type= "utm" subtype= "webfilter"
eventtype= "ftgd_blk" level= "warning" vd= "root" eventtime= 1597343304867252750
policyid=2 sessionid=83212 srcip=10.0.1.10 srcport=53742 srcintf= "port3" srci ntfrole=
"undefined" dstip=159.65.216.232 dstport=443 dstintf= "port1" dstintfrole= "wan" proto=6
service= "HTTPS" hostname= "etp-experiment-1.dummytracker.org" profile= "default"
action= "blocked" reqtype= "direct" url= "https://etp-experiment-1.dummytracker.org/"
sentbyte=517 rcvdbyte=0 direction= "outgoing" msg= "URL belongs to a denied category in
policy" method= "domain" cat=26 catdesc= "Malicious Websites" crscore=30 craction=
4194304 crlevel= "high"
```

Based on the raw log, which two statements are correct? (Choose two.)

- A. Traffic is blocked because Action is set to DENY in the firewall policy.
- B. Traffic belongs to the root VDOM.
- C. This is a security log.
- D. Log severity is set to error on FortiGate.

Answer: AC

NEW QUESTION 4

What inspection mode does FortiGate use if it is configured as a policy-based next-generation firewall (NGFW)?

- A. Full Content inspection
- B. Proxy-based inspection
- C. Certificate inspection
- D. Flow-based inspection

Answer: D

NEW QUESTION 5

Which engine handles application control traffic on the next-generation firewall (NGFW) FortiGate?

- A. Antivirus engine
- B. Intrusion prevention system engine
- C. Flow engine
- D. Detection engine

Answer: B

Explanation:

<http://docs.fortinet.com/document/fortigate/6.0.0/handbook/240599/application-control>

NEW QUESTION 6

In consolidated firewall policies, IPv4 and IPv6 policies are combined in a single consolidated policy. Instead of separate policies. Which three statements are true about consolidated IPv4 and IPv6 policy configuration? (Choose three.)

- A. The IP version of the sources and destinations in a firewall policy must be different.
- B. The Incoming Interfac
- C. Outgoing Interfac
- D. Schedule, and Service fields can be shared with both IPv4 and IPv6.
- E. The policy table in the GUI can be filtered to display policies with IPv4, IPv6 or IPv4 and IPv6 sources and destinations.
- F. The IP version of the sources and destinations in a policy must match.
- G. The policy table in the GUI will be consolidated to display policies with IPv4 and IPv6 sources and destinations.

Answer: BDE

NEW QUESTION 7

Refer to the exhibit.

Name	Severity	Target	OS	Action	CVE-ID
FTP.Login.Failed	High	Server	All	Pass	

Review the Intrusion Prevention System (IPS) profile signature settings. Which statement is correct in adding the FTP.Login.Failed signature to the IPS sensor profile?

- A. The signature setting uses a custom rating threshold.
- B. The signature setting includes a group of other signatures.

- C. Traffic matching the signature will be allowed and logged.
D. Traffic matching the signature will be silently dropped and logged.

Answer: D

Explanation:

Select Block to silently drop traffic matching any of the signatures included in the entry. So, while the default action would be 'Pass' for this signature the administrator is specifically overriding that to set the Block action. To use the default action the setting would have to be 'Default'.
Action is drop, signature default action is listed only in the signature, it would only match if action was set to default.

NEW QUESTION 8

Refer to the exhibit.

```
Fortigate # diagnose sniffer packet any "icmp" 5
interfaces=[any]
filters=[icmp]
20.370482 port2 in 10.0.1.2 -> 8.8.8.8: icmp: echo request
0x0000  4500 003c 2f8f 0000 8001 f020 0a00 0102  E...</.....
0x0010  0808 0808 0800 4d5a 0001 0001 6162 6364  ....MZ....abcd
0x0020  6566 6768 696a 6b6c 6d6e 6f70 7172 7374  efghijklmnopqrst
0x0030  7576 7761 6263 6465 6667 6869          uvwabcdefghi

20.370805 port1 out 10.56.240.228 -> 8.8.8.8: icmp: echo request
0x0000  4500 003c 2f8f 0000 7f01 0106 0a38 f0e4  E...</.....8..
0x0010  0808 0808 0800 6159 ec01 0001 6162 6364  ....aY....abcd
0x0020  6566 6768 696a 6b6c 6d6e 6f70 7172 7374  efghijklmnopqrst
0x0030  7576 7761 6263 6465 6667 6869          uvwabcdefghi

20.372138 port1 in 8.8.8.8 -> 10.56.240.228: icmp: echo reply
0x0000  4500 003c 0000 0000 7501 3a95 0808 0808  E...<....u.:....
0x0010  0a38 f0e4 0000 6959 ec01 0001 6162 6364  .8....iY....abcd
0x0020  6566 6768 696a 6b6c 6d6e 6f70 7172 7374  efghijklmnopqrst
0x0030  7576 7761 6263 6465 6667 6869          uvwabcdefghi

20.372163 port2 out 8.8.8.8 -> 10.0.1.2: icmp: echo reply
0x0000  4500 003c 0000 0000 7401 2bb0 0808 0808  E...<....t.+....
0x0010  0a00 0102 0000 555a 0001 0001 6162 6364  ....UZ....abcd
0x0020  6566 6768 696a 6b6c 6d6e 6f70 7172 7374  efghijklmnopqrst
0x0030  7576 7761 6263 6465 6667 6869          uvwabcdefghi
```

An administrator is running a sniffer command as shown in the exhibit.
Which three pieces of information are included in the sniffer output? (Choose three.)

- A. Interface name
B. Ethernet header
C. IP header
D. Application header
E. Packet payload

Answer: ACE

NEW QUESTION 9

Refer to the exhibit.

```
STUDENT # get system session list
PROTO  EXPIRE  SOURCE          SOURCE-NAT      DESTINATION      DESTINATION-NAT
tcp    3598    10.0.1.10:2706  10.200.1.6:2706 10.200.1.254:80 -
tcp    3598    10.0.1.10:2704  10.200.1.6:2704 10.200.1.254:80 -
tcp    3596    10.0.1.10:2702  10.200.1.6:2702 10.200.1.254:80 -
tcp    3599    10.0.1.10:2700  10.200.1.6:2700 10.200.1.254:443 -
tcp    3599    10.0.1.10:2698  10.200.1.6:2698 10.200.1.254:80 -
tcp    3598    10.0.1.10:2696  10.200.1.6:2696 10.200.1.254:443 -
udp    174     10.0.1.10:2694  -                10.0.1.254:53 -
udp    173     10.0.1.10:2690  -                10.0.1.254:53 -
```

Which contains a session list output. Based on the information shown in the exhibit, which statement is true?

- A. Destination NAT is disabled in the firewall policy.
B. One-to-one NAT IP pool is used in the firewall policy.
C. Overload NAT IP pool is used in the firewall policy.
D. Port block allocation IP pool is used in the firewall policy.

Answer: B

Explanation:

FortiGate_Security_6.4 page 155 . In one-to-one, PAT is not required.

NEW QUESTION 10

An administrator is running the following sniffer command:

```
diagnose sniffer packet any "host 192.168.2.12" 5
```

Which three pieces of Information will be Included in me sniffer output? {Choose three.}

- A. Interface name
- B. Packet payload
- C. Ethernet header
- D. IP header
- E. Application header

Answer: ABD

NEW QUESTION 10

An employee needs to connect to the office through a high-latency internet connection.
Which SSL VPN setting should the administrator adjust to prevent SSL VPN negotiation failure?

- A. idle-timeout
- B. login-timeout
- C. udp-idle-timer
- D. session-ttl

Answer: B

Explanation:

FortiGate Infrastructure 7.2 Study Guide (p.222):

"When connected to SSL VPN over high latency connections, FortiGate can time out the client before the client can finish the negotiation process, such as DNS lookup and time to enter a token. Two new CLI commands under config vpn ssl settings have been added to address this. The first command allows you to set up the login timeout, replacing the previous hard timeout value. The second command allows you to set up the maximum DTLS hello timeout for SSL VPN connections."

NEW QUESTION 14

Which two protocols are used to enable administrator access of a FortiGate device? (Choose two.)

- A. SSH
- B. HTTPS
- C. FTM
- D. FortiTelemetry

Answer: AB

NEW QUESTION 19

Which of the following statements is true regarding SSL VPN settings for an SSL VPN portal?

- A. By default, FortiGate uses WINS servers to resolve names.
- B. By default, the SSL VPN portal requires the installation of a client's certificate.
- C. By default, split tunneling is enabled.
- D. By default, the admin GUI and SSL VPN portal use the same HTTPS port.

Answer: D

NEW QUESTION 24

Examine this PAC file configuration.
Which of the following statements are true? (Choose two.)

- A. Browsers can be configured to retrieve this PAC file from the FortiGate.
- B. Any web request to the 172.25. 120.0/24 subnet is allowed to bypass the proxy.
- C. All requests not made to Fortinet.com or the 172.25. 120.0/24 subnet, have to go through altproxy.corp.com: 8060.
- D. Any web request fortinet.com is allowed to bypass the proxy.

Answer: AD

NEW QUESTION 27

Which two settings are required for SSL VPN to function between two FortiGate devices? (Choose two.)

- A. The client FortiGate requires a client certificate signed by the CA on the server FortiGate.
- B. The client FortiGate requires a manually added route to remote subnets.
- C. The client FortiGate uses the SSL VPN tunnel interface type to connect SSL VPN.
- D. The server FortiGate requires a CA certificate to verify the client FortiGate certificate.

Answer: CD

Explanation:

<https://docs.fortinet.com/document/fortigate/7.0.9/administration-guide/508779/fortigate-as-ssl-vpn-client>

To establish an SSL VPN connection between two FortiGate devices, the following two settings are required:

The server FortiGate requires a CA certificate to verify the client FortiGate certificate: The server FortiGate will use a CA (Certificate Authority) certificate to verify the client FortiGate certificate, ensuring that the client device is trusted and allowed to establish an SSL VPN connection.

The client FortiGate requires the SSL VPN tunnel interface type to connect SSL VPN: The client FortiGate must have an SSL VPN tunnel interface type configured

in order to establish an SSL VPN connection. This interface type will be used to connect to the server FortiGate over the SSL VPN.

NEW QUESTION 30

Which two actions can you perform only from the root FortiGate in a Security Fabric? (Choose two.)

- A. Shut down/reboot a downstream FortiGate device.
- B. Disable FortiAnalyzer logging for a downstream FortiGate device.
- C. Log in to a downstream FortiSwitch device.
- D. Ban or unban compromised hosts.

Answer: AB

NEW QUESTION 32

An administrator has configured a strict RPF check on FortiGate. Which statement is true about the strict RPF check?

- A. The strict RPF check is run on the first sent and reply packet of any new session.
- B. Strict RPF checks the best route back to the source using the incoming interface.
- C. Strict RPF checks only for the existence of at least one active route back to the source using the incoming interface.
- D. Strict RPF allows packets back to sources with all active routes.

Answer: B

Explanation:

Strict Reverse Path Forwarding (RPF) is a security feature that is used to detect and prevent IP spoofing attacks on a network. It works by checking the routing information for incoming packets to ensure that they are coming from the source address that is indicated in the packet's header. In strict RPF mode, the firewall will check the best route back to the source of the incoming packet using the incoming interface. If the packet's source address does not match the route back to the source, the packet is dropped. This helps to prevent attackers from spoofing their IP address and attempting to access the network.

NEW QUESTION 36

Refer to the exhibit, which contains a static route configuration. An administrator created a static route for Amazon Web Services.

The screenshot shows the 'Edit Static Route' configuration in FortiGate. The 'Destination' is set to 'Subnet' with a value of 'Internet Service'. The 'Gateway Address' is '10.200.1.254'. The 'Interface' is 'port1'. The 'Status' is 'Enabled'.

Which CLI command must the administrator use to view the route?

- A. get router info routing-table database
- B. diagnose firewall route list
- C. get internet-service route list
- D. get router info routing-table all

Answer: B

Explanation:

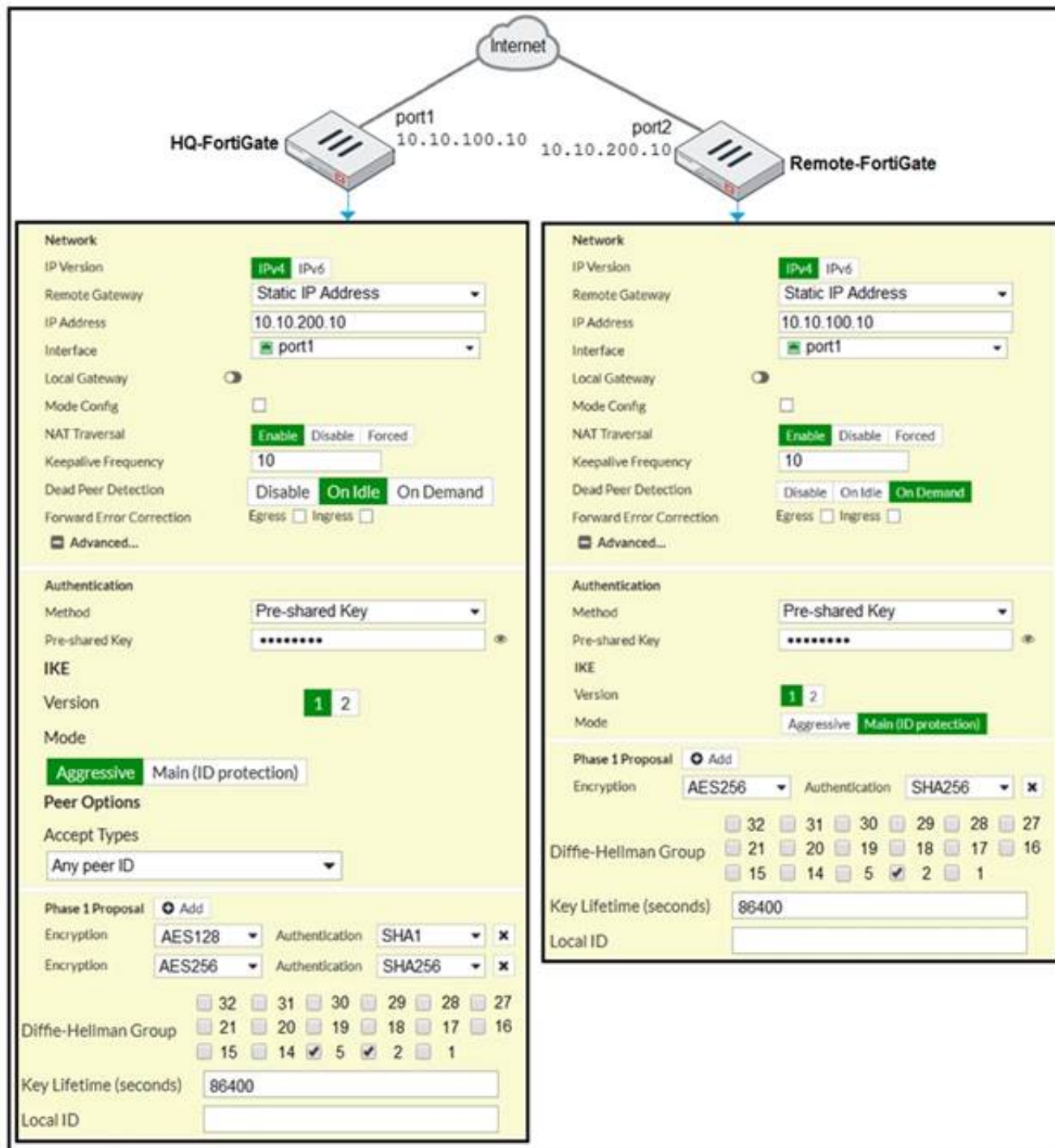
ISDB static route will not create entry directly in routing-table. Reference: <https://community.fortinet.com/t5/FortiGate/Technical-Tip-Creating-a-static-route-for-Predefined-Internet/ta-p/1> and here

<https://community.fortinet.com/t5/FortiGate/Technical-Tip-Verify-the-matching-policy-route/ta-p/190640>

FortiGate Infrastructure 7.2 Study Guide (p.16 and p.59): "Even though they are configured as static routes, ISDB routes are actually policy routes and take precedence over any other routes in the routing table. As such, ISDB routes are added to the policy routing table." "FortiOS maintains a policy route table that you can view by running the diagnose firewall proute list command."

NEW QUESTION 41

A network administrator is troubleshooting an IPsec tunnel between two FortiGate devices. The administrator has determined that phase 1 fails to come up. The administrator has also re-entered the pre-shared key on both FortiGate devices to make sure they match.



Based on the phase 1 configuration and the diagram shown in the exhibit, which two configuration changes will bring phase 1 up? (Choose two.)

- A. On HQ-FortiGate, set IKE mode to Main (ID protection).
- B. On both FortiGate devices, set Dead Peer Detection to On Demand.
- C. On HQ-FortiGate, disable Diffie-Hellman group 2.
- D. On Remote-FortiGate, set port2 as Interface.

Answer: AD

Explanation:

"In IKEv1, there are two possible modes in which the IKE SA negotiation can take place: main, and aggressive mode. Settings on both ends must agree; otherwise, phase 1 negotiation fails and both IPsec peers are not able to establish a secure channel."

NEW QUESTION 45

Which two types of traffic are managed only by the management VDOM? (Choose two.)

- A. FortiGuard web filter queries
- B. PKI
- C. Traffic shaping
- D. DNS

Answer: AD

NEW QUESTION 48

Which two features of IPsec IKEv1 authentication are supported by FortiGate? (Choose two.)

- A. Extended authentication (XAuth) for faster authentication because fewer packets are exchanged
- B. Extended authentication (XAuth) to request the remote peer to provide a username and password
- C. No certificate is required on the remote peer when you set the certificate signature as the authentication method
- D. Pre-shared key and certificate signature as authentication methods

Answer: BD

Explanation:

* B. Extended authentication (XAuth) to request the remote peer to provide a username and password

This is true because extended authentication (XAuth) is a feature that allows FortiGate to request the remote peer to provide a username and password during the IPsec IKEv1 authentication process. XAuth is an extension of the IKEv1 protocol that adds an additional authentication step after the main mode or aggressive mode exchange. XAuth can be used with either pre-shared key or certificate signature as the primary authentication method, and it can provide stronger security and granular access control for IPsec VPNs.

* D. Pre-shared key and certificate signature as authentication methods

This is true because pre-shared key and certificate signature are two authentication methods that are supported by FortiGate for IPsec IKEv1 VPNs. Pre-shared key is a method where both peers share a secret key that is used to authenticate each other during the IKEv1 exchange. Certificate signature is a method where both peers have digital certificates that are used to verify each other's identity and public key during the IKEv1 exchange. Both methods can be combined with XAuth for additional authentication

NEW QUESTION 51

Refer to the exhibits.

Exhibit A **Exhibit B**

```
# get system performance status
CPU states: 0% user 0% system 0% nice 100% idle 0% iowait 0% irq 0% softirq
CPU0 states: 0% user 0% system 0% nice 100% idle 0% iowait 0% irq 0% softirq
Memory: 2061108k total, 1854997k used (90%), 106111k free (5.1%), 100000k freeable (4.8%)
Average network usage: 83 / 0 kbps in 1 minute, 81 / 0 kbps in 10 minutes, 81 / 0 kbps in 30
minutes
Average sessions: 5 sessions in 1 minute, 3 sessions in 10 minutes, 3 sessions in 30 minutes
Average session setup rate: 0 sessions per second in last 1 minute, 0 sessions per second in last
10 minutes, 0 sessions per second in last 30 minutes
Virus caught: 0 total in 1 minute
IPS attacks blocked: 0 total in 1 minute
Uptime: 10 days, 3 hours, 28 minutes
```

Exhibit A **Exhibit B**

```
config system global
    set memory-use-threshold-red 88
    set memory-use-threshold-extreme 95
    set memory-use-threshold-green 82
end
```

Exhibit A shows system performance output. Exhibit B shows a FortiGate configured with the default configuration of high memory usage thresholds. Based on the system performance output, which two statements are correct? (Choose two.)

- A. Administrators can access FortiGate only through the console port.
- B. FortiGate has entered conserve mode.
- C. FortiGate will start sending all files to FortiSandbox for inspection.
- D. Administrators cannot change the configuration.

Answer: BD

NEW QUESTION 52

The IPS engine is used by which three security features? (Choose three.)

- A. Antivirus in flow-based inspection
- B. Web filter in flow-based inspection
- C. Application control
- D. DNS filter
- E. Web application firewall

Answer: ABC

Explanation:

FortiGate Security 7.2 Study Guide (p.385): "The IPS engine is responsible for most of the features shown in this lesson: IPS and protocol decoders. It's also responsible for application control, flow-based antivirus protection, web filtering, and email filtering."

NEW QUESTION 55

Refer to the exhibits.

SSL-VPN Settings

Connection Settings ⓘ

Listen on Interface(s) port1 + ×

Listen on Port 10443

ⓘ Web mode access will be listening at <https://10.200.1.1:10443>

Redirect HTTP to SSL-VPN ☐

Restrict Access Allow access from any host Limit access to specific hosts

Idle Logout ☒

Inactive For 300 Seconds

Server Certificate Fortinet_Factory

Require Client Certificate ☐

Tunnel Mode Client Settings ⓘ

Address Range Automatically assign addresses Specify custom IP ranges

ⓘ Tunnel users will receive IPs in the range of 10.212.134.200 - 10.212.134.210

DNS Server Same as client system DNS Specify

Specify WINS Servers ☐

Authentication/Portal Mapping ⓘ

+ Create New Edit Delete

Users/Groups	Portal
sslvpn	tunnel-access
All Other Users/Groups	full-access

Connection status

Connection: VPN

Server: <https://10.200.1.1:1443/>

Status: Connecting...

Duration: —

Bytes received: 0

Bytes sent: 0

Stop

The SSL VPN connection fails when a user attempts to connect to it. What should the user do to successfully connect to SSL VPN?

- A. Change the SSL VPN port on the client.
- B. Change the Server IP address.
- C. Change the idle-timeout.
- D. Change the SSL VPN portal to the tunnel.

Answer: A

NEW QUESTION 60

Refer to the exhibit.

```
vcluster_nr=1
vcluster_0: start_time=1593701974(2020-07-02 10:59:34), state/o/chg_time=2(work)/2
(work)/1593701169(2020-07-02 10:46:09)
  pingsvr_flip_timeout/expire=3600s/2781s
  'FGVM010000064692': ha_prio/o=1/1, link_failure=0, pingsvr_failure=0, flag=
0x00000000, uptime/reset_cnt=198/0
  'FGVM010000065036': ha_prio/o=0/0, link_failure=0, pingsvr_failure=0, flag=
0x00000001, uptime/reset_cnt=0/1
```

The exhibit displays the output of the CLI command: diagnose sys ha dump-by vcluster. Which two statements are true? (Choose two.)

- A. FortiGate SN FGVM010000065036 HA uptime has been reset.
- B. FortiGate devices are not in sync because one device is down.
- C. FortiGate SN FGVM010000064692 is the primary because of higher HA uptime.
- D. FortiGate SN FGVM010000064692 has the higher HA priority.

Answer: AD

Explanation:

* 1. Override is disable by default - OK

* 2. "If the HA uptime of a device is AT LEAST FIVE MINUTES (300 seconds) MORE than the HA Uptime of the other FortiGate devices, it becomes the primary"

The QUESTION NO: here is : HA Uptime of FGVM01000006492 > 5 minutes? NO - 198 seconds < 300 seconds (5 minutes) Page 314 Infra Study Guide.

<https://docs.fortinet.com/document/fortigate/6.0.0/handbook/666653/primary-unit-selection-with-override-disab>

NEW QUESTION 64

Which of the following conditions must be met in order for a web browser to trust a web server certificate signed by a third-party CA?

- A. The public key of the web server certificate must be installed on the browser.
- B. The web-server certificate must be installed on the browser.
- C. The CA certificate that signed the web-server certificate must be installed on the browser.
- D. The private key of the CA certificate that signed the browser certificate must be installed on the browser.

Answer: C

NEW QUESTION 66

Which scanning technique on FortiGate can be enabled only on the CLI?

- A. Heuristics scan
- B. Trojan scan
- C. Antivirus scan
- D. Ransomware scan

Answer: A

NEW QUESTION 68

What are two characteristics of FortiGate HA cluster virtual IP addresses? (Choose two.)

- A. Virtual IP addresses are used to distinguish between cluster members.
- B. Heartbeat interfaces have virtual IP addresses that are manually assigned.
- C. The primary device in the cluster is always assigned IP address 169.254.0.1.
- D. A change in the virtual IP address happens when a FortiGate device joins or leaves the cluster.

Answer: AD

Explanation:

Fortigate Infrastructure 7.2 Study Guide page 301 FortiGate Infrastructure 7.2 Study Guide (p.301):

"FGCP automatically assigns the heartbeat IP addresses based on the serial number of each device. The IP address 169.254.0.1 is assigned to the device with the highest serial number."

"A change in the heartbeat IP addresses may happen when a FortiGate device joins or leaves the cluster." "The HA cluster uses the heartbeat IP addresses to distinguish the cluster members and synchronize data." <https://networkinterview.com/fortigate-ha-high-availability/>

NEW QUESTION 70

Refer to the exhibits.

Exhibit A shows the application sensor configuration. Exhibit B shows the Excessive-Bandwidth and Apple filter details.

Exhibit A Exhibit B

Edit Application Sensor

Categories

- All Categories
- Business (179, 6)
- Collaboration (293, 6)
- Game (124)
- Mobile (3)
- P2P (85)
- Remote.Access (91)
- Storage.Backup (296, 16)
- Video/Audio (206, 13)
- Web.Client (18)
- Cloud.IT (31)
- Email (87, 12)
- General.Interest (241, 9)
- Network.Service (332)
- Proxy (106)
- Social.Media (150, 31)
- Update (48)
- VoIP (31)
- Unknown Applications

☐ Network Protocol Enforcement

Application and Filter Overrides

[+ Create New](#) [Edit](#) [Delete](#)

Priority	Details	Type	Action
1	BHVR Excessive-Bandwidth	Filter	Block
2	VEND Apple	Filter	Monitor

Exhibit A Exhibit B

Edit Override

Type: Application **Filter**

Action: Block

Filter: **BHVR** Excessive-Bandwidth

FaceTime

Name	Category	Technology
Application Signature 1/1262		
FaceTime	VoIP	Client-Server

Edit Override

Type: Application **Filter**

Action: Monitor

Filter: **VEND** Apple

FaceTime

Name	Category	Technology
Application Signature 1/33		
FaceTime	VoIP	Client-Server

Based on the configuration, what will happen to Apple FaceTime if there are only a few calls originating or incoming?

- A. Apple FaceTime will be allowed, based on the Categories configuration.
- B. Apple FaceTime will be blocked, based on the Excessive-Bandwidth filter configuration.
- C. Apple FaceTime will be allowed, based on the Apple filter configuration.
- D. Apple FaceTime will be allowed only if the Apple filter in Application and Filter Overrides is set to Allow.

Answer: B

Explanation:

FortiGate Security 7.2 Study Guide (p.310): "Then, FortiGate scans packets for matches, in this order, for the application control profile: 1. Application and filter overrides: If you have configured any application overrides or filter overrides, the application control profile considers those first. It looks for a matching override starting at the top of the list, like firewall policies. 2. Categories: Finally, the application control profile applies the action that you've configured for applications in your selected categories."

NEW QUESTION 72

Which statement is correct regarding the use of application control for inspecting web applications?

- A. Application control can identify child and parent applications, and perform different actions on them.
- B. Application control signatures are organized in a nonhierarchical structure.
- C. Application control does not require SSL inspection to identify web applications.
- D. Application control does not display a replacement message for a blocked web application.

Answer: A

Explanation:

Application control is a feature that allows FortiGate to inspect and control the use of specific web applications on the network. When application control is enabled, FortiGate can identify child and parent applications, and can perform different actions on them based on the configuration.

NEW QUESTION 74

Which three security features require the intrusion prevention system (IPS) engine to function? (Choose three.)

- A. Web filter in flow-based inspection
- B. Antivirus in flow-based inspection
- C. DNS filter
- D. Web application firewall
- E. Application control

Answer: ABE

Explanation:

<https://docs.fortinet.com/document/fortigate/7.0.0/new-features/739623/dns-filter-handled-by-ips-engine-in-flow>

NEW QUESTION 78

Which three statements are true regarding session-based authentication? (Choose three.)

- A. HTTP sessions are treated as a single user.
- B. IP sessions from the same source IP address are treated as a single user.
- C. It can differentiate among multiple clients behind the same source IP address.
- D. It requires more resources.
- E. It is not recommended if multiple users are behind the source NAT

Answer: ACD

NEW QUESTION 82

Which two statements are correct regarding FortiGate HA cluster virtual IP addresses? (Choose two.)

- A. Heartbeat interfaces have virtual IP addresses that are manually assigned.
- B. A change in the virtual IP address happens when a FortiGate device joins or leaves the cluster.
- C. Virtual IP addresses are used to distinguish between cluster members.
- D. The primary device in the cluster is always assigned IP address 169.254.0.1.

Answer: BD

NEW QUESTION 85

A network administrator has enabled SSL certificate inspection and antivirus on FortiGate. When downloading an EICAR test file through HTTP, FortiGate detects the virus and blocks the file. When downloading the same file through HTTPS, FortiGate does not detect the virus and the file can be downloaded.

What is the reason for the failed virus detection by FortiGate?

- A. The website is exempted from SSL inspection.
- B. The EICAR test file exceeds the protocol options oversize limit.
- C. The selected SSL inspection profile has certificate inspection enabled.
- D. The browser does not trust the FortiGate self-signed CA certificate.

Answer: AC

Explanation:

SSL Inspection Profile, on the Inspection method there are 2 options to choose from, SSL Certificate Inspection or Full SSL Inspection. FG SEC 7.2 Studi Guide: Full SSL Inspection level is the only choice that allows antivirus to be effective.

NEW QUESTION 90

An administrator is configuring an Ipsec between site A and siteB. The Remotes Gateway setting in both sites has been configured as Static IP Address. For site A, the local quick mode selector is 192. 16. 1.0/24 and the remote quick mode selector is 192. 16.2.0/24. How must the administrator configure the local quick mode selector for site B?

- A. 192. 168.3.0/24
- B. 192. 168.2.0/24
- C. 192. 168. 1.0/24
- D. 192. 168.0.0/8

Answer: B

NEW QUESTION 92

Which three options are the remote log storage options you can configure on FortiGate? (Choose three.)

- A. FortiCache
- B. FortiSIEM
- C. FortiAnalyzer
- D. FortiSandbox
- E. FortiCloud

Answer: BCE

NEW QUESTION 93

Which CLI command will display sessions both from client to the proxy and from the proxy to the servers?

- A. diagnose wad session list
- B. diagnose wad session list | grep hook-pre&&hook-out
- C. diagnose wad session list | grep hook=pre&&hook=out
- D. diagnose wad session list | grep "hook=pre"&"hook=out"

Answer: A

NEW QUESTION 96

Which statements best describe auto discovery VPN (ADVPN). (Choose two.)

- A. It requires the use of dynamic routing protocols so that spokes can learn the routes to other spokes.
- B. ADVPN is only supported with IKEv2.
- C. Tunnels are negotiated dynamically between spokes.
- D. Every spoke requires a static tunnel to be configured to other spokes so that phase 1 and phase 2 proposals are defined in advance.

Answer: AC

NEW QUESTION 99

Refer to the web filter raw logs.

```
date=2020-07-09 time=12:51:51 logid="0316013057" type="utm"
subtype="webfilter" eventtype="ftgd_blk" level="warning"
vd="root" eventtime=1594313511250173744 tz="-0400" policyid=1
sessionid=5526 srcip=10.0.1.10 srcport=48660 srcintf="port2"
srcintfrole="undefined" dstip=104.244.42.193 dstport=443
dstintf="port1" dstintfrole="undefined" proto=6 service="HTTPS"
hostname="twitter.com" profile="all_users_web" action="blocked"
reqtype="direct" url="https://twitter.com/" sentbyte=517
rcvdbyte=0 direction="outgoing" msg="URL belongs to a category
with warnings enabled" method="domain" cat=37 catdesc="Social
Networking"

date=2020-07-09 time=12:52:16 logid="0316013057" type="utm"
subtype="webfilter" eventtype="ftgd_blk" level="warning"
vd="root" eventtime=1594313537024536428 tz="-0400" policyid=1
sessionid=5552 srcip=10.0.1.10 srcport=48698 srcintf="port2"
srcintfrole="undefined" dstip=104.244.42.193 dstport=443
dstintf="port1" dstintfrole="undefined" proto=6 service="HTTPS"
hostname="twitter.com" profile="all_users_web"
action="passthrough" reqtype="direct" url="https://twitter.com/"
sentbyte=369 rcvdbyte=0 direction="outgoing" msg="URL belongs to
a category with warnings enabled" method="domain" cat=37
catdesc="Social Networking"
```

Based on the raw logs shown in the exhibit, which statement is correct?

- A. Social networking web filter category is configured with the action set to authenticate.
- B. The action on firewall policy ID 1 is set to warning.
- C. Access to the social networking web filter category was explicitly blocked to all users.
- D. The name of the firewall policy is all_users_web.

Answer: A

NEW QUESTION 104

On FortiGate, which type of logs record information about traffic directly to and from the FortiGate management IP addresses?

- A. System event logs
- B. Forward traffic logs
- C. Local traffic logs
- D. Security logs

Answer: C

NEW QUESTION 108

Which timeout setting can be responsible for deleting SSL VPN associated sessions?

- A. SSL VPN idle-timeout
- B. SSL VPN http-request-body-timeout
- C. SSL VPN login-timeout
- D. SSL VPN dtls-hello-timeout

Answer: A

NEW QUESTION 109

An administrator configures outgoing interface any in a firewall policy. What is the result of the policy list view?

- A. Search option is disabled.
- B. Policy lookup is disabled.
- C. By Sequence view is disabled.
- D. Interface Pair view is disabled.

Answer: D

Explanation:

"If you use multiple source or destination interfaces, or the any interface in a firewall policy, you cannot separate policies into sections by interface pairs—some would be triplets or more. So instead, policies are then always displayed in a single list (By Sequence)."

NEW QUESTION 112

Which two statements are true about the FGCP protocol? (Choose two.)

- A. FGCP elects the primary FortiGate device.
- B. FGCP is not used when FortiGate is in transparent mode.
- C. FGCP runs only over the heartbeat links.
- D. FGCP is used to discover FortiGate devices in different HA groups.

Answer: AC

Explanation:

The FGCP (FortiGate Clustering Protocol) is a protocol that is used to manage high availability (HA) clusters of FortiGate devices. It performs several functions, including the following:

FGCP elects the primary FortiGate device: In an HA cluster, FGCP is used to determine which FortiGate device will be the primary device, responsible for handling traffic and making decisions about what to allow or block. FGCP uses a variety of factors, such as the device's priority, to determine which device should be the primary.

FGCP runs only over the heartbeat links: FGCP communicates between FortiGate devices in the HA cluster using the heartbeat links. These are dedicated links that are used to exchange status and control information between the devices. FGCP does not run over other types of links, such as data links.

NEW QUESTION 115

Refer to the exhibits.

Exhibit A **Exhibit B**

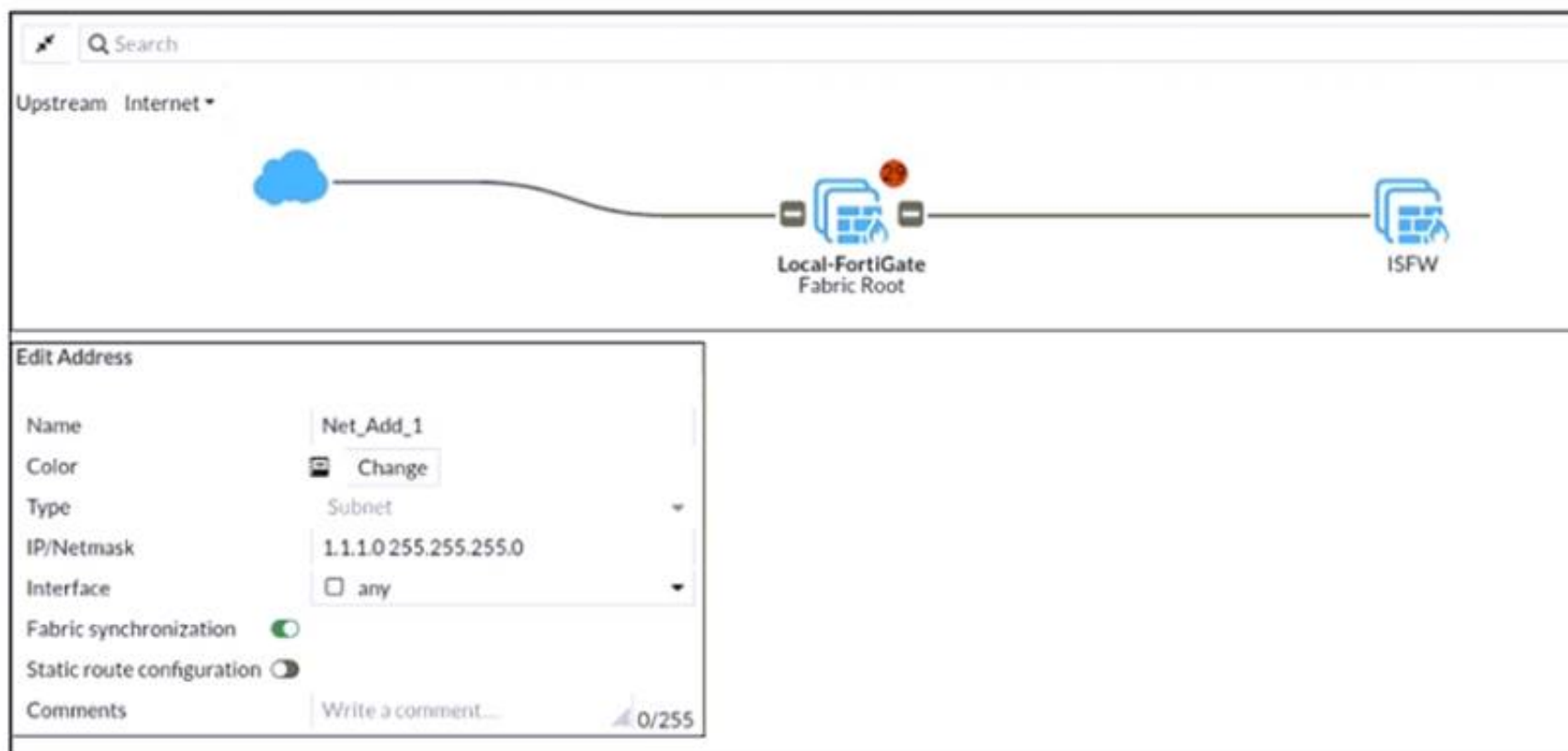


Exhibit A Exhibit B

<pre>Local-FortiGate # show full-configuration system csf config system csf set status enable set upstream '' set upstream-port 8013 set group-name "fortinet" set group-password ENC Y9ynT+64RpCTpVdgSmoQH242mYSIzNNzLNvgzMXjyN 9hSj1JE3KYJlo3XxygldvNxPId8T5xctBUszy7rgIcHcA/qHrByXSXfPEeHC6ufkqlPJr W6GypwDUB5O3VFgPbASFYYteQesmwoJtGe84BLqa+hUcgunLD1z/97sBp+PLt5nrA== set accept-auth-by-cert enable set log-unification enable set authorization-request-type serial set fabric-workers 2 set downstream-access disable set configuration-sync default set fabric-object-unification default set saml-configuration-sync default</pre>	<pre>ISFW # show full-configuration system csf config system csf set status enable set upstream "10.0.1.254" set upstream-port 8013 set group-name '' set accept-auth-by-cert enable set log-unification enable set authorization-request-type serial set fabric-workers 2 set downstream-access disable set configuration-sync default set saml-configuration-sync local end ISFW #</pre>
--	---

An administrator creates a new address object on the root FortiGate (Local-FortiGate) in the security fabric. After synchronization, this object is not available on the downstream FortiGate (ISFW).

What must the administrator do to synchronize the address object?

- A. Change the csf setting on ISFW (downstream) to set configuration-sync local.
- B. Change the csf setting on ISFW (downstream) to set authorization-request-type certificate.
- C. Change the csf setting on both devices to set downstream-access enable.
- D. Change the csf setting on Local-FortiGate (root) to set fabric-object-unification default.

Answer: C

NEW QUESTION 119

An administrator needs to configure VPN user access for multiple sites using the same soft FortiToken. Each site has a FortiGate VPN gateway. What must an administrator do to achieve this objective?

- A. The administrator can register the same FortiToken on more than one FortiGate.
- B. The administrator must use a FortiAuthenticator device
- C. The administrator can use a third-party radius OTP server.
- D. The administrator must use the user self-registration server.

Answer: B

NEW QUESTION 122

Refer to the exhibits.

The exhibits show the firewall policies and the objects used in the firewall policies.

The administrator is using the Policy Lookup feature and has entered the search criteria shown in the exhibit.

Exhibit A Exhibit B

Address Object

Name	Details
IP Range/Subnet	
LOCAL_CLIENT	10.0.1.10/32
all	0.0.0.0
FQDN	
facebook.com	facebook.com

Internet Service Object

Name	Direction	Number of Entries	
Predefined Internet Services			
Facebook-Web	Destination	26.578	
IP	Port	Protocol	Status
1.9.91.17 - 1.9.91.18	80	TCP	Enabled
	443		
	8443		
1.9.91.17 - 1.9.91.18	443	UDP	Enabled
1.9.91.30	443	UDP	Enabled

Firewall Policies

ID	From	To	Source	Destination	Schedule	Service	Action	NAT
3	port3	port1	LOCAL_CLIENT	facebook.com	always	ULL_UDP	ACCEPT	Enabled
1	port1	port3	facebook.com	LOCAL_CLIENT	always	ULL_UDP	ACCEPT	Enabled
4	port4	port1	LOCAL_CLIENT	all	always	HTTP DNS HTTPS	ACCEPT	Enabled
5	port3	port1	LOCAL_CLIENT	Facebook-Web	always	Internet Service	ACCEPT	Enabled
2	port3	port1	all	all	always	ALL	ACCEPT	Enabled

Exhibit A Exhibit B

Policy Lookup

Incoming Interface

port3

IP Version

IPv4

Protocol

TCP

Source

10.0.1.10

Source Port

Optional (1-65535)

Destination

facebook.com

Destination Port

443

Search

Close

Which policy will be highlighted, based on the input criteria?

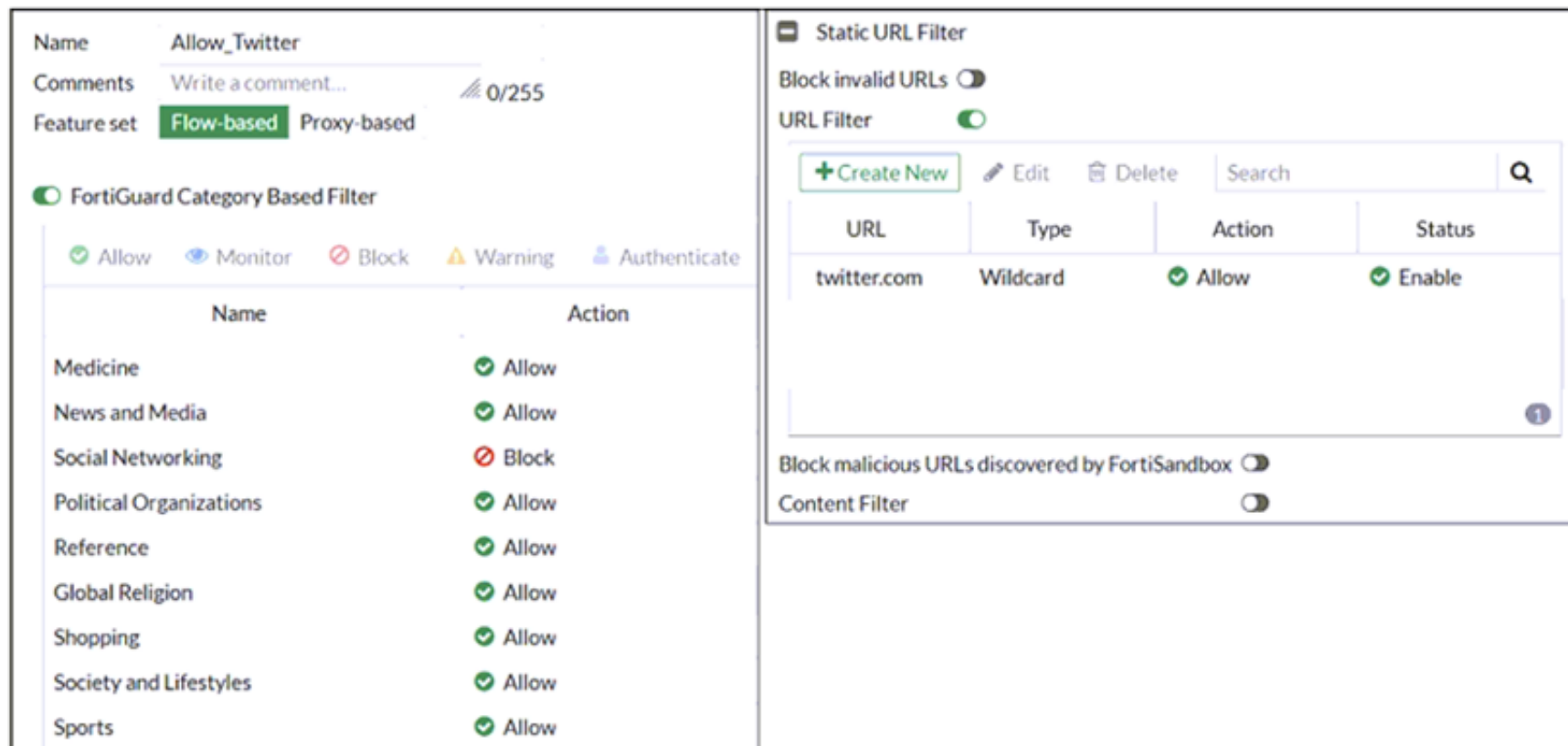
- A. Policy with ID 4.
- B. Policy with ID 5.
- C. Policies with ID 2 and 3.
- D. Policy with ID 4.

Answer: B

NEW QUESTION 125

Refer to exhibit.

An administrator configured the web filtering profile shown in the exhibit to block access to all social networking sites except Twitter. However, when users try to access twitter.com, they are redirected to a FortiGuard web filtering block page.



Based on the exhibit, which configuration change can the administrator make to allow Twitter while blocking all other social networking sites?

- A. On the FortiGuard Category Based Filter configuration, set Action to Warning for Social Networking
- B. On the Static URL Filter configuration, set Type to Simple
- C. On the Static URL Filter configuration, set Action to Exempt.
- D. On the Static URL Filter configuration, set Action to Monitor.

Answer: C

NEW QUESTION 128

By default, FortiGate is configured to use HTTPS when performing live web filtering with FortiGuard servers. Which CLI command will cause FortiGate to use an unreliable protocol to communicate with FortiGuard servers for live web filtering?

- A. set fortiguard-anycast disable
- B. set webfilter-force-off disable
- C. set webfilter-cache disable
- D. set protocol tcp

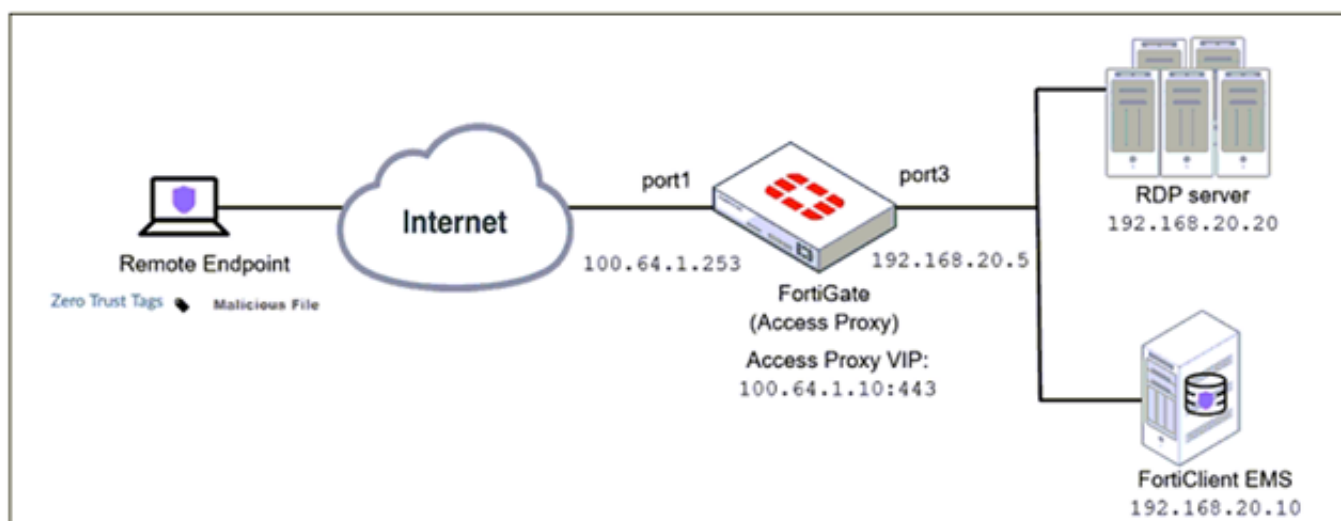
Answer: A

Explanation:

y default, "fortiguard-anycast" is enabled, and this setting only works with "set protocol https". To use udp (ie. "set protocol udp"), "fortiguard-anycast" must be disabled.

NEW QUESTION 129

Refer to the exhibit.



Based on the ZTNA tag, the security posture of the remote endpoint has changed. What will happen to endpoint active ZTNA sessions?

- A. They will be re-evaluated to match the endpoint policy.
- B. They will be re-evaluated to match the firewall policy.
- C. They will be re-evaluated to match the ZTNA policy.
- D. They will be re-evaluated to match the security policy.

Answer: C

Explanation:

<https://docs.fortinet.com/document/fortigate/7.0.0/new-features/580880/posture-check-verification-for-active-zt> FortiGate Infrastructure 7.2 Study Guide (p.182): "Endpoint posture changes trigger active ZTNA proxy

sessions to be re-verified and terminated if the endpoint is no longer compliant with the ZTNA policy."

NEW QUESTION 130

Which statement describes a characteristic of automation stitches?

- A. They can have one or more triggers.
- B. They can be run only on devices in the Security Fabric.
- C. They can run multiple actions simultaneously.
- D. They can be created on any device in the fabric.

Answer: C

Explanation:

<https://docs.fortinet.com/document/fortigate/6.2.0/cookbook/351998/creating-automation-stitches>

NEW QUESTION 134

A network administrator wants to set up redundant IPsec VPN tunnels on FortiGate by using two IPsec VPN tunnels and static routes.

- * All traffic must be routed through the primary tunnel when both tunnels are up
- * The secondary tunnel must be used only if the primary tunnel goes down
- * In addition, FortiGate should be able to detect a dead tunnel to speed up tunnel failover

Which two key configuration changes are needed on FortiGate to meet the design requirements? (Choose two.)

- A. Configure a high distance on the static route for the primary tunnel, and a lower distance on the static route for the secondary tunnel.
- B. Enable Dead Peer Detection.
- C. Configure a lower distance on the static route for the primary tunnel, and a higher distance on the static route for the secondary tunnel.
- D. Enable Auto-negotiate and Autokey Keep Alive on the phase 2 configuration of both tunnels.

Answer: BC

Explanation:

Study Guide – IPsec VPN – IPsec configuration – Phase 1 Network.

When Dead Peer Detection (DPD) is enabled, DPD probes are sent to detect a failed tunnel and bring it down before its IPsec SAs expire. This failure detection mechanism is very useful when you have redundant paths to the same destination, and you want to failover to a backup connection when the primary connection fails to keep the connectivity between the sites up.

There are three DPD modes. On demand is the default mode. Study Guide – IPsec VPN – Redundant VPNs.

Add one phase 1 configuration for each tunnel. DPD should be enabled on both ends. Add at least one phase 2 definition for each phase 1.

Add one static route for each path. Use distance or priority to select primary routes over backup routes (routes for the primary VPN must have a lower distance or lower priority than the backup). Alternatively, use dynamic routing.

Configure FW policies for each IPsec interface.

NEW QUESTION 136

How does FortiGate act when using SSL VPN in web mode?

- A. FortiGate acts as an FDS server.
- B. FortiGate acts as an HTTP reverse proxy.
- C. FortiGate acts as DNS server.
- D. FortiGate acts as router.

Answer: B

NEW QUESTION 139

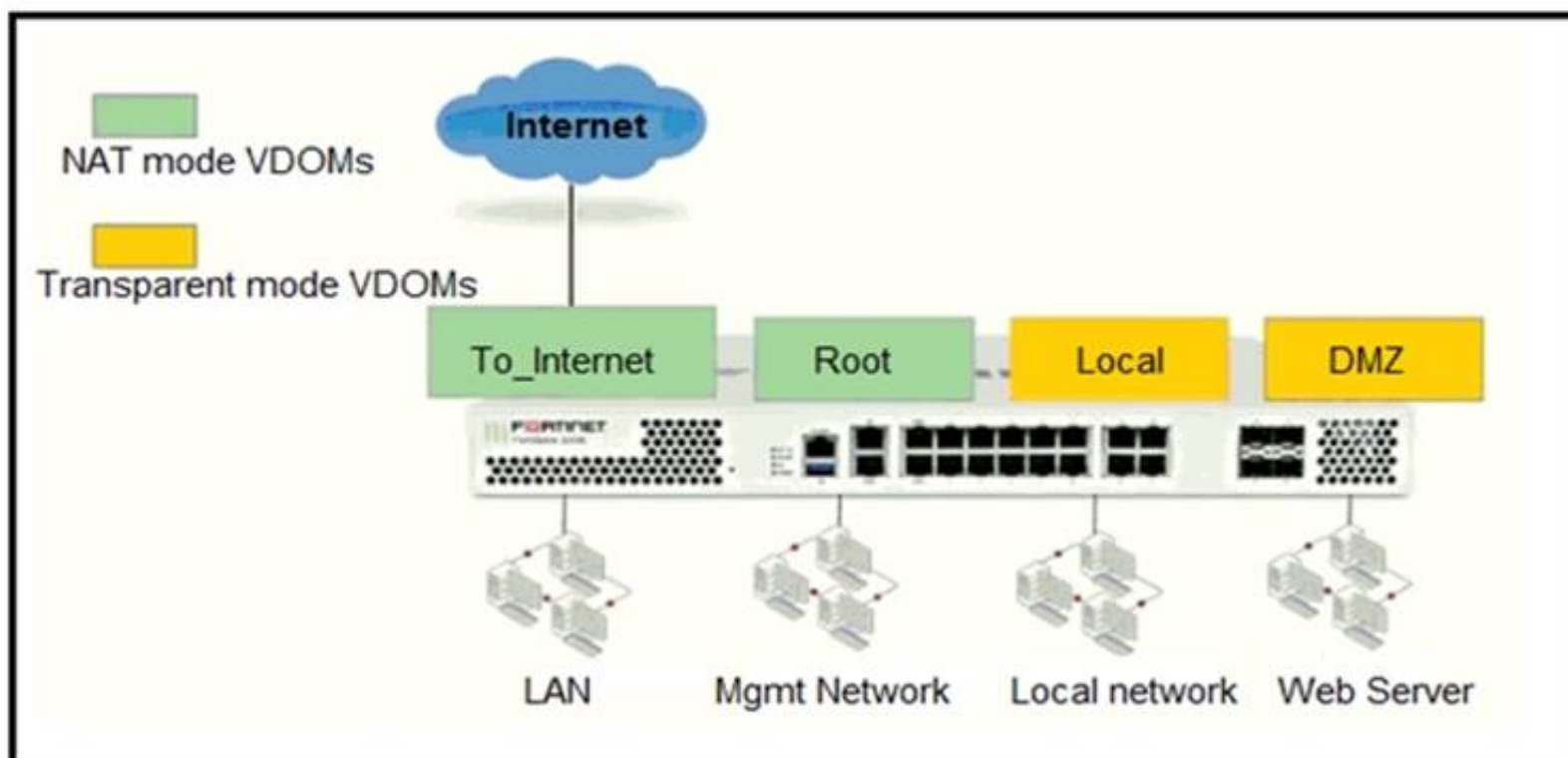
Which two statements are true about the RPF check? (Choose two.)

- A. The RPF check is run on the first sent packet of any new session.
- B. The RPF check is run on the first reply packet of any new session.
- C. The RPF check is run on the first sent and reply packet of any new session.
- D. RPF is a mechanism that protects FortiGate and your network from IP spoofing attacks.

Answer: AD

NEW QUESTION 143

Refer to the exhibit.



The Root and To_Internet VDOMs are configured in NAT mode. The DMZ and Local VDOMs are configured in transparent mode. The Root VDOM is the management VDOM. The To_Internet VDOM allows LAN users to access the internet. The To_Internet VDOM is the only VDOM with internet access and is directly connected to ISP modem .
With this configuration, which statement is true?

- A. Inter-VDOM links are required to allow traffic between the Local and Root VDOMs.
- B. A static route is required on the To_Internet VDOM to allow LAN users to access the internet.
- C. Inter-VDOM links are required to allow traffic between the Local and DMZ VDOMs.
- D. Inter-VDOM links are not required between the Root and To_Internet VDOMs because the Root VDOM is used only as a management VDOM.

Answer: A

NEW QUESTION 145

Examine the exhibit, which contains a virtual IP and firewall policy configuration.

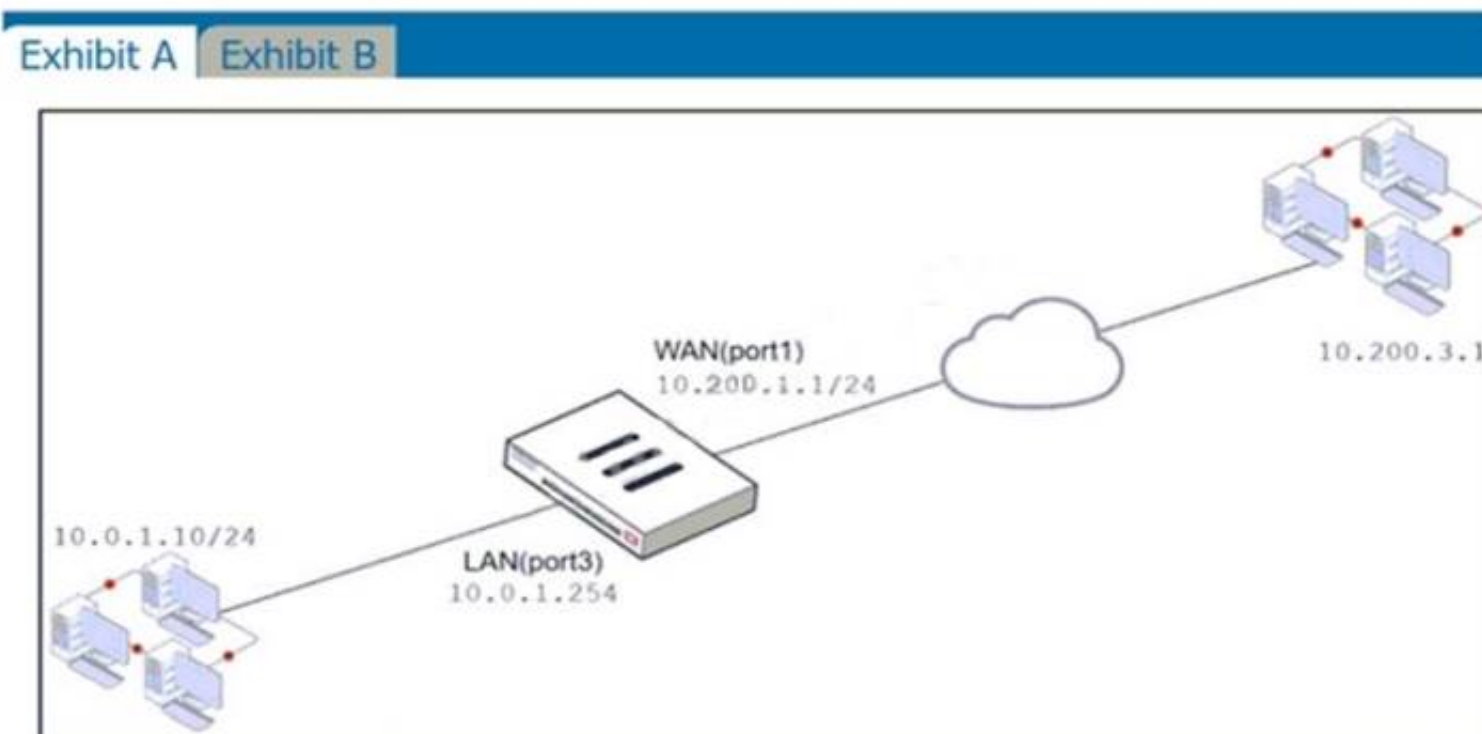


Exhibit A

Exhibit B

Name	From	To	Source	Destination	Schedule	Service	Action	NAT
WebServer	WAN (port1)	LAN (port3)	all	VIP	always	ALL	ACCEPT	Enabled

Edit Virtual IP

VIP type

IPv4

Name

VIP

Comments

Write a comment...

0/255

Color

Change

Network

Interface

WAN (port1)

Type

Static NAT

External IP address/range

10.200.1.10

Map to

IPv4 address/range

10.0.1.10

☐ Optional Filters

☒ Port Forwarding

Protocol

TCP

UDP

SCTP

ICMP

Port Mapping Type

One to one

Many to many

External service port

10443

Map to IPv4 port

443

The WAN (port1) interface has the IP address 10.200. 1. 1/24. The LAN (port2) interface has the IP address 10.0. 1.254/24. The first firewall policy has NAT enabled on the outgoing interface address. The second firewall policy is configured with a VIP as the destination address. Which IP address will be used to source NAT the Internet traffic coming from a workstation with the IP address 10.0. 1. 10/24?

- A. 10.200. 1. 10
- B. Any available IP address in the WAN (port1) subnet 10.200. 1.0/24 66 of 108
- C. 10.200. 1. 1
- D. 10.0. 1.254

Answer: A

Explanation:

<https://help.fortinet.com/fos50hlp/54/Content/FortiOS/fortigate-firewall-52/Firewall%20Objects/Virtual%20IPs>.

NEW QUESTION 149

Refer to the exhibit.

```
FGT1 # get router info routing-table database
Codes: K - kernel, C - connected, S - static, R - RIP, B - BGP
       O - OSPF, IA - OSPF inter area
       N1 - OSPF NSSA external type 1, N2 - OSPF NSSA external type 2
       E1 - OSPF external type 1, E2 - OSPF external type 2
       i - IS-IS, L1 - IS-IS level-1, L2 - IS-IS level-2, ia - IS-IS inter area
       > - selected route, * - FIB route, p - stale info

S      *> 0.0.0.0/0 [10/0] via 172.20.121.2, port1, [20/0]
        *>                [10/0] via 10.0.0.2, port2, [30/0]
S      0.0.0.0/0 [20/0] via 192.168.15.2, port3, [10/0]
C      *> 10.0.0.0/24 is directly connected, port2
S      172.13.24.0/24 [10.0] is directly connected, port4
C      *> 172.20.121.0/24 is directly connected, port1
S      *> 192.167.1.0/24 [10/0] via 10.0.0.2, port2
C      *> 192.168.15.0/24 is directly connected, port3
```

Given the routing database shown in the exhibit, which two statements are correct? (Choose two.)

- A. The port3 default route has the lowest metric.
- B. The port1 and port2 default routes are active in the routing table.
- C. The ports default route has the highest distance.
- D. There will be eight routes active in the routing table.

Answer: BC

Explanation:

<https://community.fortinet.com/t5/FortiGate/Technical-Tip-How-to-identify-Inactive-Routes-in-the-Routing/ta-p>

NEW QUESTION 154

An administrator observes that the port1 interface cannot be configured with an IP address. What can be the reasons for that? (Choose three.)

- A. The interface has been configured for one-arm sniffer.
- B. The interface is a member of a virtual wire pair.
- C. The operation mode is transparent.
- D. The interface is a member of a zone.
- E. Captive portal is enabled in the interface.

Answer: ABC

Explanation:

https://help.fortinet.com/fos50hlp/54/Content/FortiOS/fortigate-whats-new-54/Top_VirtualWirePair.htm

NEW QUESTION 156

Refer to the exhibit.

NameCustom_Profile

Comments0/255

Access Permissions

Access Control	Permissions	Set All
Security Fabric	<div><div>None</div><div>Read</div><div>Read/Write</div></div>	
FortiView	<div><div>None</div><div>Read</div><div>Read/Write</div></div>	
User & Device	<div><div>None</div><div>Read</div><div>Read/Write</div></div>	
Firewall	<div><div>None</div><div>Read</div><div>Read/Write</div><div>Custom</div></div>	
Log & Report	<div><div>None</div><div>Read</div><div>Read/Write</div><div>Custom</div></div>	
Network	<div><div>None</div><div>Read</div><div>Read/Write</div><div>Custom</div></div>	
System	<div><div>None</div><div>Read</div><div>Read/Write</div><div>Custom</div></div>	
Security Profile	<div><div>None</div><div>Read</div><div>Read/Write</div><div>Custom</div></div>	
VPN	<div><div>None</div><div>Read</div><div>Read/Write</div></div>	
WAN Opt & Cache	<div><div>None</div><div>Read</div><div>Read/Write</div></div>	
WiFi & Switch	<div><div>None</div><div>Read</div><div>Read/Write</div></div>	

Permit usage of CLI diagnostic commands

Override Idle Timeout

Based on the administrator profile settings, what permissions must the administrator set to run the diagnose firewall auth list CLI command on FortiGate?

- A. Custom permission for Network
- B. Read/Write permission for Log & Report
- C. CLI diagnostics commands permission
- D. Read/Write permission for Firewall

Answer: C

Explanation:

<https://kb.fortinet.com/kb/documentLink.do?externalID=FD50220>

NEW QUESTION 158

An administrator must disable RPF check to investigate an issue.

Which method is best suited to disable RPF without affecting features like antivirus and intrusion prevention system?

- A. Enable asymmetric routing, so the RPF check will be bypassed.

- B. Disable the RPF check at the FortiGate interface level for the source check.
- C. Disable the RPF check at the FortiGate interface level for the reply check .
- D. Enable asymmetric routing at the interface level.

Answer: B

NEW QUESTION 161

Which statement regarding the firewall policy authentication timeout is true?

- A. It is an idle timeou
- B. The FortiGate considers a user to be "idle" if it does not see any packets coming from the user's source IP.
- C. It is a hard timeou
- D. The FortiGate removes the temporary policy for a user's source IP address after this timer has expired.
- E. It is an idle timeou
- F. The FortiGate considers a user to be "idle" if it does not see any packets coming from the user's source MAC.
- G. It is a hard timeou
- H. The FortiGate removes the temporary policy for a user's source MAC address after this timer has expired.

Answer: A

NEW QUESTION 164

A team manager has decided that, while some members of the team need access to a particular website, the majority of the team does not Which configuration option is the most effective way to support this request?

- A. Implement a web filter category override for the specified website
- B. Implement a DNS filter for the specified website.
- C. Implement web filter quotas for the specified website
- D. Implement web filter authentication for the specified website.

Answer: D

NEW QUESTION 165

FortiGate is operating in NAT mode and is configured with two virtual LAN (VLAN) subinterfaces added to the same physical interface. In this scenario, which statement about VLAN IDs is true?

- A. The two VLAN subinterfaces can have the same VLAN ID only if they belong to different VDOMs.
- B. The two VLAN subinterfaces must have different VLAN IDs.
- C. The two VLAN subinterfaces can have the same VLAN ID only if they have IP addresses in the same subnet.
- D. The two VLAN subinterfaces can have the same VLAN ID only if they have IP addresses in different subnets.

Answer: CD

NEW QUESTION 169

Refer to the exhibit.

```
session info: proto=6 proto_state=02 duration=6 expire=6 timeout=3600 flags=0000
0000 socktype=0 sockport=0 av_idx=0 use=3
origin-shaper=
reply-shaper=
per_ip_shaper=
class_id=0 ha_id=0 policy_dir=0 tunnel=/ vlan_cos=0/255
state=may_dirty
statistic(bytes/packets/allow_err): org=180/3/1 reply=264/3/1 tuples=2
tx speed(Bps/kbps): 26/0 rx speed(Bps/kbps): 39/0
origin->sink: org pre->post, reply pre->post dev=3->5/5->3 gwy=10.0.1.11/0.0.0.0
hook=pre dir=org act=dnat 10.200.3.1:38024->10.200.1.11:80(10.0.1.11:80)
hook=post dir=reply act=snat 10.0.1.11:80->10.200.3.1:38024(10.200.1.11:80)
pos/(before,after) 0/(0,0), 0/(0,0)
misc=0 policy_id=8 auth_info=0 chk_client_info=0 vd=0
serial=0001fb06 tos=ff/ff app_list=0 app=0 url_cat=0
rpdb_link_id= 00000000 rpdb_svc_id=0 ngfwid=n/a
npu_state=0x040000
```

Which contains a session diagnostic output. Which statement is true about the session diagnostic output?

- A. The session is in SYN_SENT state.
- B. The session is in FIN_ACK state.
- C. The session is in FTN_WAIT state.
- D. The session is in ESTABLISHED state.

Answer: A

Explanation:

Indicates TCP (proto=6) session in SYN_SENT state (proto=state=2) <https://kb.fortinet.com/kb/viewContent.do?externalId=FD30042>

NEW QUESTION 174

Which two statements are correct about a software switch on FortiGate? (Choose two.)

- A. It can be configured only when FortiGate is operating in NAT mode
- B. Can act as a Layer 2 switch as well as a Layer 3 router
- C. All interfaces in the software switch share the same IP address
- D. It can group only physical interfaces

Answer: AC

NEW QUESTION 177

Which two configuration settings are synchronized when FortiGate devices are in an active-active HA cluster? (Choose two.)

- A. FortiGuard web filter cache
- B. FortiGate hostname
- C. NTP
- D. DNS

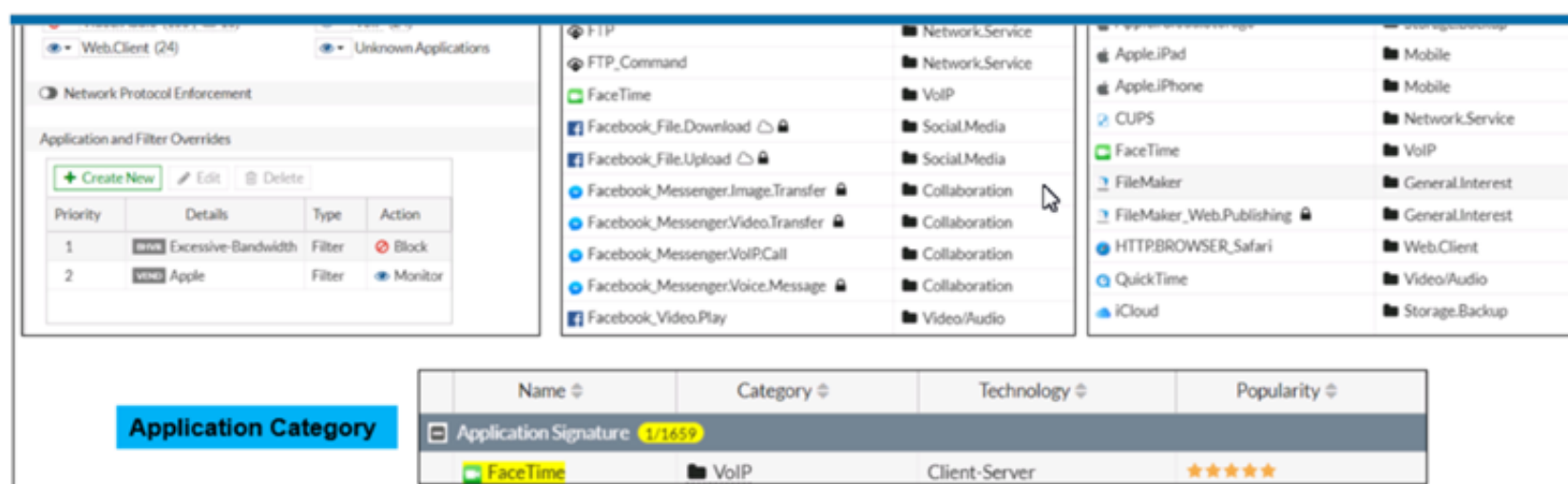
Answer: CD

Explanation:

In the 7.2 Infrastructure Guide (page 306) the list of configuration settings that are NOT synchronized includes both 'FortiGate host name' and 'Cache'

NEW QUESTION 181

Refer to the exhibit to view the application control profile.



Based on the configuration, what will happen to Apple FaceTime?

- A. Apple FaceTime will be blocked, based on the Excessive-Bandwidth filter configuration
- B. Apple FaceTime will be allowed, based on the Apple filter configuration.
- C. Apple FaceTime will be allowed only if the filter in Application and Filter Overrides is set to Learn
- D. Apple FaceTime will be allowed, based on the Categories configuration.

Answer: A

NEW QUESTION 182

FortiGate is configured as a policy-based next-generation firewall (NGFW) and is applying web filtering and application control directly on the security policy. Which two other security profiles can you apply to the security policy? (Choose two.)

- A. Antivirus scanning
- B. File filter
- C. DNS filter
- D. Intrusion prevention

Answer: AD

NEW QUESTION 185

In an explicit proxy setup, where is the authentication method and database configured?

- A. Proxy Policy
- B. Authentication Rule
- C. Firewall Policy
- D. Authentication scheme

Answer: D

NEW QUESTION 190

An administrator wants to configure timeouts for users. Regardless of the userTMs behavior, the timer should start as soon as the user authenticates and expire after the configured value.

Which timeout option should be configured on FortiGate?

- A. auth-on-demand
- B. soft-timeout

- C. idle-timeout
- D. new-session
- E. hard-timeout

Answer: E

Explanation:

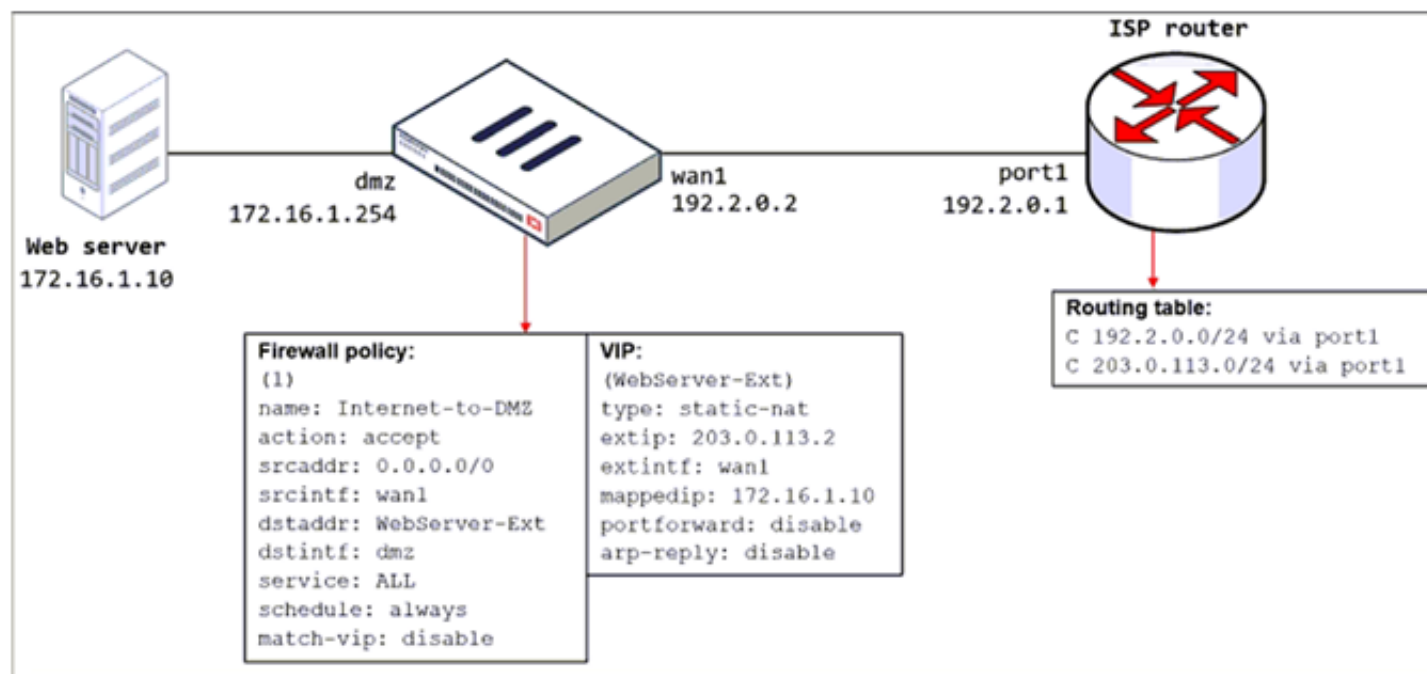
<https://community.fortinet.com/t5/FortiGate/Technical-TipExplanation:-of-auth-timeout-types-for-Firewall/ta-p/>

NEW QUESTION 191

Refer to the exhibit.

The exhibit shows a diagram of a FortiGate device connected to the network, the firewall policy and VIP configuration on the FortiGate device, and the routing table on the ISP router.

When the administrator tries to access the web server public address (203.0.113.2) from the internet, the connection times out. At the same time, the administrator runs a sniffer on FortiGate to capture incoming web traffic to the server and does not see any output.



Based on the information shown in the exhibit, what configuration change must the administrator make to fix the connectivity issue?

- A. Configure a loopback interface with address 203.0.113.2/32.
- B. In the VIP configuration, enable arp-reply.
- C. Enable port forwarding on the server to map the external service port to the internal service port.
- D. In the firewall policy configuration, enable match-vip.

Answer: B

Explanation:

FortiGate Security 7.2 Study Guide (p.115): "Enabling ARP reply is usually not required in most networks because the routing tables on the adjacent devices contain the correct next hop information, so the networks are reachable. However, sometimes the routing configuration is not fully correct, and having ARP reply enabled can solve the issue for you. For this reason, it's a best practice to keep ARP reply enabled."

NEW QUESTION 192

Which two statements are correct about NGFW Policy-based mode? (Choose two.)

- A. NGFW policy-based mode does not require the use of central source NAT policy
- B. NGFW policy-based mode can only be applied globally and not on individual VDOMs
- C. NGFW policy-based mode supports creating applications and web filtering categories directly in a firewall policy
- D. NGFW policy-based mode policies support only flow inspection

Answer: CD

NEW QUESTION 197

Refer to the exhibit.

Username	Administrator	Change Password
Type	<div>Local User</div> <div>Match a user on a remote server group</div> <div>Match all users in a remote server group</div> <div>Use public key infrastructure (PKI) group</div>	
Comments	<div>Write a comment...</div> <div>0/255</div>	
Administrator Profile	prof_admin	
Email Address	admin@xyz.com	
<div><input type="checkbox"/> SMS</div>		
<div><input type="checkbox"/> Two-factor Authentication</div>		
<div><input type="checkbox"/> Restrict login to trusted hosts</div>		
<div><input type="checkbox"/> Restrict admin to guest account provisioning only</div>		

The global settings on a FortiGate device must be changed to align with company security policies. What does the Administrator account need to access the FortiGate global settings?

- A. Change password
- B. Enable restrict access to trusted hosts
- C. Change Administrator profile
- D. Enable two-factor authentication

Answer: C

NEW QUESTION 198

Which certificate value can FortiGate use to determine the relationship between the issuer and the certificate?

- A. Subject Key Identifier value
- B. SMMIE Capabilities value
- C. Subject value
- D. Subject Alternative Name value

Answer: A

NEW QUESTION 201

Which of statement is true about SSL VPN web mode?

- A. The tunnel is up while the client is connected.
- B. It supports a limited number of protocols.
- C. The external network application sends data through the VPN.
- D. It assigns a virtual IP address to the client.

Answer: B

Explanation:

FortiGate_Security_6.4 page 575 - Web mode requires only a web browser, but supports a limited number of protocols.

NEW QUESTION 202

What is the limitation of using a URL list and application control on the same firewall policy, in NGFW policy-based mode?

- A. It limits the scope of application control to the browser-based technology category only.
- B. It limits the scope of application control to scan application traffic based on application category only.
- C. It limits the scope of application control to scan application traffic using parent signatures only
- D. It limits the scope of application control to scan application traffic on DNS protocol only.

Answer: B

NEW QUESTION 207

Refer to the exhibit.

Exhibit A Exhibit B

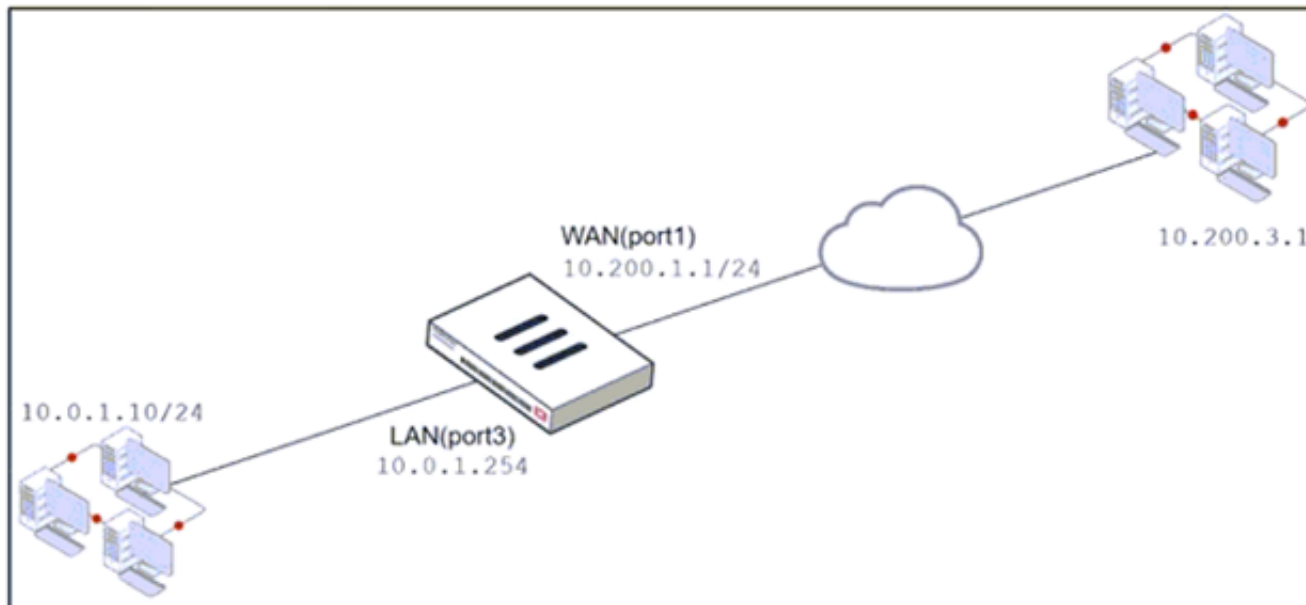


Exhibit A Exhibit B

Name	From	To	Source	Destination	Schedule	Service	Action	NAT
Full_Access	LAN (port3)	WAN (port1)	all	all	always	ALL	ACCEPT	IP Pool
WebServer	WAN (port1)	LAN (port3)	all	VIP	always	ALL	ACCEPT	Disabled

Edit Virtual IP

VIP type: IPv4

Name: VIP

Comments: Write a comment... 0/255

Color: Change

Network

Interface: port1

Type: Static NAT

External IP address/range: 10.200.1.10

Map to

IPv4 address/range: 10.0.1.10

☐ Optional Filters

☒ Port Forwarding

Protocol: TCP UDP SCTP ICMP

Port Mapping Type: One to one Many to many

External service port: 443

Map to IPv4 port: 443

Edit Dynamic IP Pool

Name: IP Pool

Comments: Write a comment... 0/255

Type: Overload One-to-One Fixed Port Range Port Block Allocation

External IP address/range: 10.200.1.100-10.200.1.100

NAT64: ☐

ARP Reply: ☒

The exhibit contains a network diagram, virtual IP, IP pool, and firewall policies configuration. The WAN (port1) interface has the IP address 10.200. 1. 1/24. The LAN (port3) interface has the IP address 10 .0.1.254. /24. The first firewall policy has NAT enabled using IP Pool. The second firewall policy is configured with a VIP as the destination address. Which IP address will be used to source NAT the internet traffic coming from a workstation with the IP address 10.0. 1. 10?

- A. 10.200. 1. 1
- B. 10.200.3. 1
- C. 10.200. 1. 100
- D. 10.200. 1. 10

Answer: C

Explanation:

Policy 1 is applied on outbound (LAN-WAN) and policy 2 is applied on inbound (WAN-LAN). question is asking SNAT for outbound traffic so policy 1 will take place and NAT overload is in effect.

NEW QUESTION 212

An administrator has a requirement to keep an application session from timing out on port 80. What two changes can the administrator make to resolve the issue without affecting any existing services running through FortiGate? (Choose two.)

- A. Create a new firewall policy with the new HTTP service and place it above the existing HTTP policy.
- B. Create a new service object for HTTP service and set the session TTL to never
- C. Set the TTL value to never under config system-ttl
- D. Set the session TTL on the HTTP policy to maximum

Answer: BC

NEW QUESTION 216

If the Issuer and Subject values are the same in a digital certificate, which type of entity was the certificate issued to?

- A. A CRL
- B. A person
- C. A subordinate CA
- D. A root CA

Answer: D

NEW QUESTION 217

An administrator has configured the following settings:

```
config system settings
set ses-denied-traffic enable
end
config system global
set block-session-timer 30
end
```

What are the two results of this configuration? (Choose two.)

- A. Device detection on all interfaces is enforced for 30 minutes.
- B. Denied users are blocked for 30 minutes.
- C. A session for denied traffic is created.
- D. The number of logs generated by denied traffic is reduced.

Answer: CD

Explanation:

ses-denied-traffic

Enable/disable including denied session in the session table. [https://docs.fortinet.com/document/fortigate/7.0.6/cli-reference/20620/config-system-settings block-session-timer](https://docs.fortinet.com/document/fortigate/7.0.6/cli-reference/20620/config-system-settings-block-session-timer)

Duration in seconds for blocked sessions . integer

Minimum value: 1 Maximum value: 300

30

<https://docs.fortinet.com/document/fortigate/7.0.6/cli-reference/1620/config-system-global>

NEW QUESTION 220

Which statement about the IP authentication header (AH) used by IPsec is true?

- A. AH does not provide any data integrity or encryption.
- B. AH does not support perfect forward secrecy.
- C. AH provides data integrity but no encryption.
- D. AH provides strong data integrity but weak encryption.

Answer: C

NEW QUESTION 221

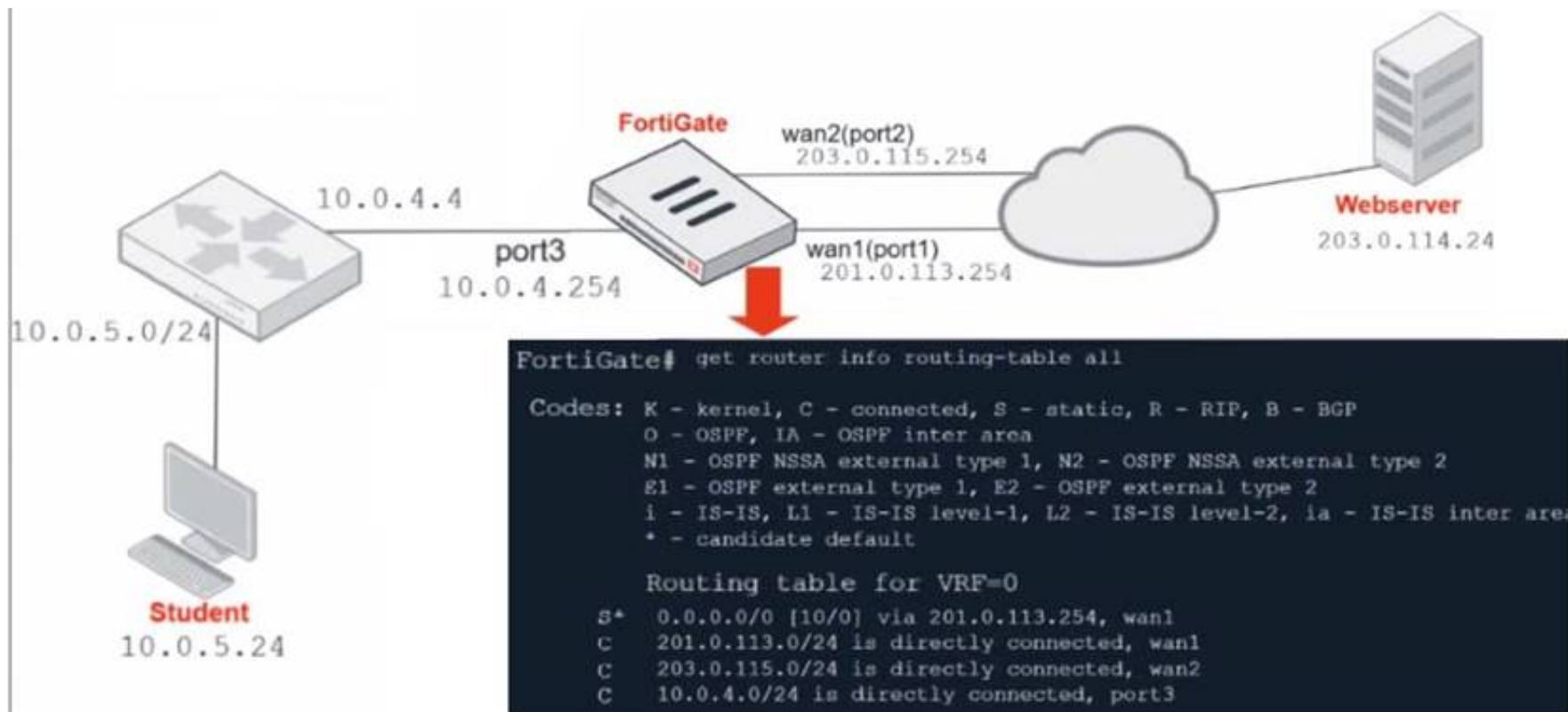
What are two functions of ZTNA? (Choose two.)

- A. ZTNA manages access through the client only.
- B. ZTNA manages access for remote users only.
- C. ZTNA provides a security posture check.
- D. ZTNA provides role-based access.

Answer: CD

NEW QUESTION 222

Refer to the exhibit.



Which contains a network diagram and routing table output. The Student is unable to access Webserver.
What is the cause of the problem and what is the solution for the problem?

- A. The first packet sent from Student failed the RPF check. This issue can be resolved by adding a static route to 10.0.4.0/24 through wan1.
- B. The first reply packet for Student failed the RPF check. This issue can be resolved by adding a static route to 10.0.4.0/24 through wan1.
- C. The first reply packet for Student failed the RPF check. This issue can be resolved by adding a static route to 203.0.114.24/32 through port3.
- D. The first packet sent from Student failed the RPF check. This issue can be resolved by adding a static route to 203.0.114.24/32 through port3.

Answer: D

NEW QUESTION 223

Refer to the exhibit, which contains a session diagnostic output.

```
session info: proto=17 proto_state=01 duration=254 expire=179 timeout=0 flags=00000000 socktype=0 sockport=0 av_idx=0 use=3
origin-shaper=
reply-shaper=
per_ip_shaper=
class_id=0 ha_id=0 policy_dir=0 tunnel=/ helper=dns-udp vlan_cos=0/255
state=log may_dirty f00 log-start
statistic(bytes/packets/allow_err): org=1420/22/1 reply=5678/22/1 tuples=2
tx speed(Bps/kbps): 5/0 rx speed(Bps/kbps): 22/0
origin->sink: org pre->post, reply pre->post dev=5->3/3->5 gwy=10.200.1.254/10.0.1.200
hook=post dir=org act=snat 10.0.1.200:2486->208.91.112.53:53(10.200.1.1:62902)
hook=pre dir=reply act=dnat 208.91.112.53:53->10.200.1.1:62902(10.0.1.200:2486)
misc=0 policy_id=3 auth_info=0 chk_client_info=0 vd=0
serial=0001fc1e tos=ff/ff app_list=0 app=0 url_cat=0
rpdb_link_id= 00000000 rpdb_svc_id=0 ngfwid=n/a
npu_state=0x040000
```

Which statement is true about the session diagnostic output?

- A. The session is a UDP unidirectional state.
- B. The session is in TCP ESTABLISHED state.
- C. The session is a bidirectional UDP connection.
- D. The session is a bidirectional TCP connection.

Answer: C

Explanation:

<https://kb.fortinet.com/kb/viewContent.do?externalId=FD30042>

NEW QUESTION 224

Refer to the exhibit showing a debug flow output.

```
id=20085 trace_id=1 func=print_pkt_detail line=5594 msg="vd-root:0 received a packet(proto=1,
10.0.1.10:19938->10.0.1.250:2048) form port1. type=8, code=0, id=19938, seq=1."
id=20085 trace_id=1 func=init_ip_session_common line=5760 msg="allocate a new session-00003dd5"
id=20085 trace_id=1 func=vf_ip_route_input_common line=2598 msg="find a route: flag=84000000 gw-
10.0.1.250 via root"
id=20085 trace_id=2 func=print_pkt_detail line=5594 msg="vd-root:0 received a packet(proto=1,
10.0.1.250:19938->10.0.1.10:0) form local. type=0, code=0, id=19938, seq=1."
id=20085 trace_id=2 func=resolve_ip_tuple_fast line=5675 msg="Find an existing session, id-
00003dd5, reply direction"
```

Which two statements about the debug flow output are correct? (Choose two.)

- A. The debug flow is of ICMP traffic.
- B. A firewall policy allowed the connection.
- C. A new traffic session is created.
- D. The default route is required to receive a reply.

Answer: AC

NEW QUESTION 226

Which three methods are used by the collector agent for AD polling? (Choose three.)

- A. FortiGate polling
- B. NetAPI
- C. Novell API
- D. WMI
- E. WinSecLog

Answer: BDE

Explanation:

FortiGate Infrastructure 7.2 Study Guide (p.127-128): "As previously stated, collector agent-based polling mode has three methods (or options) for collecting login information. The order on the slide from left to right shows most recommend to least recommended: (WMI, WinSecLog, and NetAPI)"

NEW QUESTION 228

.....

Thank You for Trying Our Product

* 100% Pass or Money Back

All our products come with a 90-day Money Back Guarantee.

* One year free update

You can enjoy free update one year. 24x7 online support.

* Trusted by Millions

We currently serve more than 30,000,000 customers.

* Shop Securely

All transactions are protected by VeriSign!

100% Pass Your NSE4_FGT-7.2 Exam with Our Prep Materials Via below:

https://www.certleader.com/NSE4_FGT-7.2-dumps.html