

300-425 Dumps

Designing Cisco Enterprise Wireless Networks (ENWLSD)

<https://www.certleader.com/300-425-dumps.html>



NEW QUESTION 1

An engineer must ensure that the new wireless LAN deployment can support seamless roaming between access points using a standard based on an amendment to the 802.11 protocol. Which protocol must the engineer select?

- A. 802.11i
- B. 802.11ac
- C. 802.11r
- D. 802.11e

Answer: C

Explanation:

The 802.11r Fast Transition (FT) Roaming is an amendment to the 802.11 IEEE standards.

NEW QUESTION 2

A high-density wireless network is designed. Which Cisco WLC configuration setting must be incorporated in the design to encourage clients to use the 5 GHz spectrum?

- A. Band Select
- B. RRM
- C. Cisco Centralized Key Management
- D. load balancing

Answer: A

Explanation:

Band Select will impact the initial scan, steering clients towards 5 GHz

NEW QUESTION 3

An engineer is designing a wireless deployment for a university auditorium. Which two features can be used to help deal with the issues introduced by high AP count? (Choose two.)

- A. TSPEC
- B. RXSOP
- C. TPC
- D. LSS
- E. DFS

Answer: CE

Explanation:

<https://www.cisco.com/c/en/us/support/docs/wireless-mobility/80211/200069-Overview-on-802-11h-Transmit-P>

NEW QUESTION 4

Refer to the exhibit.

	General	Credentials	Interfaces	High Availability	Inventory	Advanced												
	<table border="1"> <thead> <tr> <th></th> <th>Name</th> <th>Management IP Address (IPv4/IPv6)</th> </tr> </thead> <tbody> <tr> <td>Primary Controller</td> <td>WLC-Primary</td> <td>192.168.1.11</td> </tr> <tr> <td>Secondary Controller</td> <td>WLC-Secondary</td> <td>10.42.98.11</td> </tr> <tr> <td>Tertiary Controller</td> <td></td> <td></td> </tr> </tbody> </table>							Name	Management IP Address (IPv4/IPv6)	Primary Controller	WLC-Primary	192.168.1.11	Secondary Controller	WLC-Secondary	10.42.98.11	Tertiary Controller		
	Name	Management IP Address (IPv4/IPv6)																
Primary Controller	WLC-Primary	192.168.1.11																
Secondary Controller	WLC-Secondary	10.42.98.11																
Tertiary Controller																		
AP Failover Priority	Low																	

An engineer determined that during a recent controller failure, some APs did not failover to their secondary controller based on the network design, which has sufficient licenses for all APs. The controllers are not in a mobility group but have A records for their hostnames in DNS. Which setting needs to be addressed?

- A. The controllers must be in the same mobility group.
- B. The secondary controller IP address is incorrect.
- C. DNS hostnames are required to be FQDN.
- D. The AP failover priority was not set high enough.

Answer: D

NEW QUESTION 5

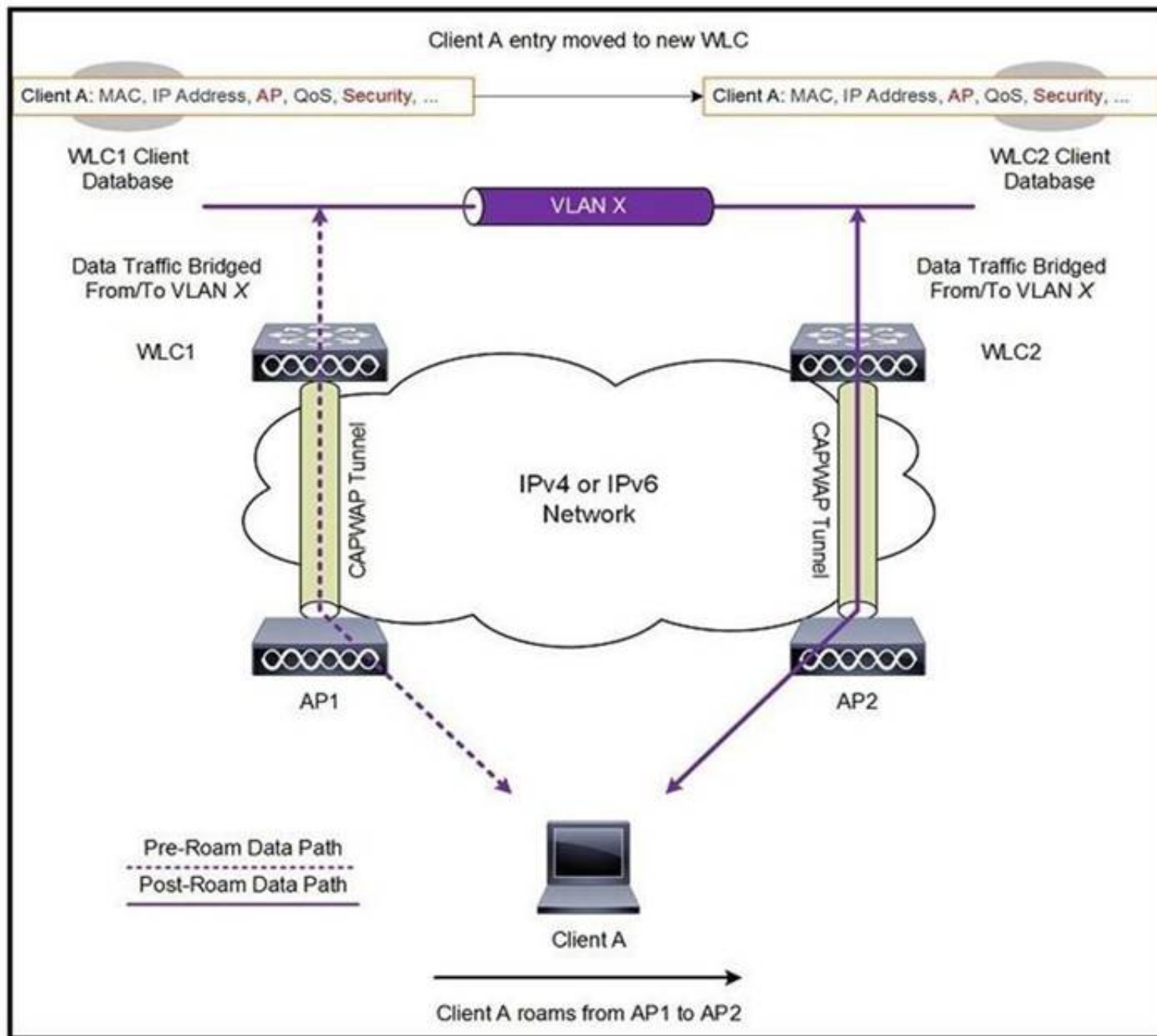
An engineer has designed an anchor redundancy for guest clients connecting to SSID with auto-anchor configured. After adding a second Anchor WLC under the SSID mobility anchor list, clients are load-balanced between existing and new anchors instead of having one anchor as active and the other one as standby. Which feature should be included in the design that will be configured on the WLC running 8.1 or above to ensure anchor redundancy?

- A. Auto-Anchor Foreign Mapping
- B. AP groups
- C. Guest Anchor Priority
- D. 802.11r

Answer: C

NEW QUESTION 6

Refer to the exhibit.

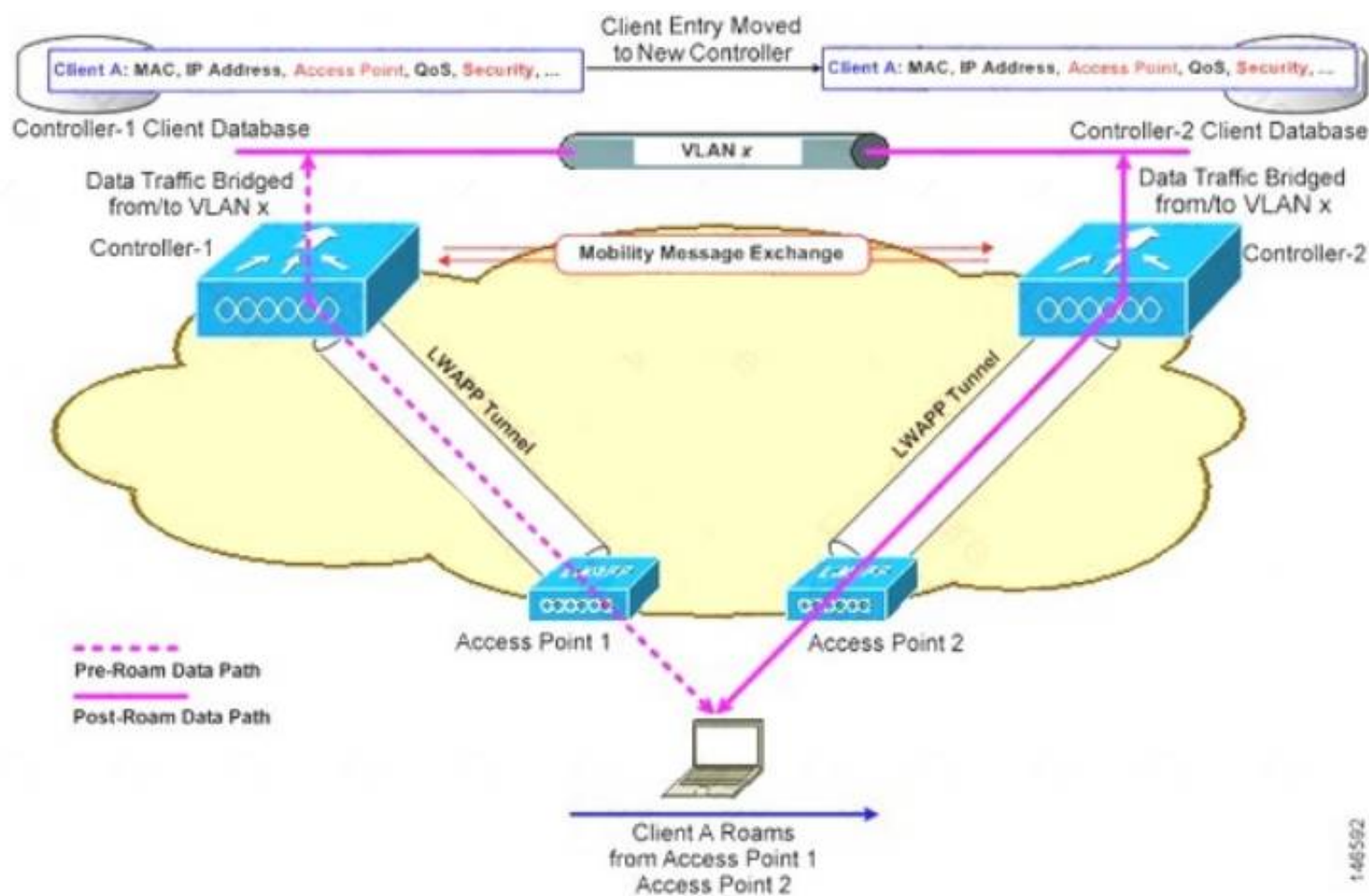


A client roams between two APs that are registered to two different controllers, where each controller has an interface in the client subnet. Both controllers are running AireOS. Which scenario explains the client roaming behavior?

- A. Controllers exchange mobility control messages (over UDP port 16666) and the client database entry is moved from the original controller to the new controller.
- B. Controllers do not exchange mobility control messages (over UDP port 16666) and the client database entry is not moved from the original controller to the new controller.
- C. Controllers exchange mobility control messages (over UDP port 16666) and a new client session is started with the new controller.
- D. Controllers exchange mobility control messages (over UDP port 16666) and the client database entry is tunneled from the original controller to the new controller.

Answer: A

Explanation:



In this instance controllers exchange mobility control messages (over UDP port 16666) and the client database entry is **moved** from the original controller to the new controller.

NEW QUESTION 7

When conducting a site survey for real-time traffic over wireless, which two design capabilities of smartphones and tablets must be considered? (Choose two.)

- A. no support for 802.11ac
- B. higher data rates than laptops
- C. fewer antennas than laptops
- D. no support for 802.11r
- E. lower data rates than laptops

Answer: BE

Explanation:

Site surveys are one of the basic requirements when you deploy a WLAN, and you must always consider the Wi-Fi capabilities of the client devices or endpoints. Most smartphones and tablets support 802.11. However, generally, the smartphones and tablets have fewer antennas and lower data rates than laptops. In addition, most are not purpose-built for the enterprise WLAN market. Almost all smartphones and tablets support enterprise security policies. However, many of them do not support

NEW QUESTION 8

As part of a wireless site survey in a hospital, an engineer needs to identify potential Layer 1 interferers. In which two areas is the engineer most likely to find sources of 2.4 GHz and 5 GHz RF noise? (Choose two.)

- A. magnetic resonance imaging
- B. kitchen
- C. Gamma Knife radiation treatment
- D. X-ray radiography
- E. patient room

Answer: BE

Explanation:

<https://www.ciscopress.com/articles/article.asp?p=2351131&seqNum=2>

NEW QUESTION 9

A company has 10 access point licenses available on their backup Cisco WLC and their primary Cisco WLC is at full capacity, 5 access points are set to high failover priority and 7 access points are set to critical failover priority. During a failure, not all critical access points failed over to the backup Cisco WLC. Which configuration is the cause of this issue?

- A. The high priority access point is oversubscribed.
- B. network ap-priority is set to enable.
- C. The critical priority access point count is oversubscribed.
- D. network ap-priority is set to disable.

Answer: D

Explanation:

<https://www.ciscolive.com/c/dam/r/ciscolive/emea/docs/2016/pdf/BRKCOL-2275.pdf>

NEW QUESTION 10

How are mobility groups created, excluding mobility anchors?

- A. The WLGs do not have to be of the same model or type to be a member of a mobility group, however each member should be running different software versions.
- B. A mobility group does not require all WLCs in the group to use the same virtual IP address.
- C. Each WLC must use the same mobility domain name and be defined as a peer in each other's static mobility members list.
- D. If WLCs with HA SSO are deployed, each WLC in the WLC HA pair is considered separately as a mobility peer.

Answer: D

NEW QUESTION 10

An engineer must create data link redundancy for the company's Cisco Wireless LAN controller. The engineer has decided to configure LAG-based redundancy instead of port-based redundancy. Which three features of LAG-based redundancy influenced this decision? (Choose three.)

- A. Packets are always sent out on the same port they are received on.
- B. All interface traffic passes as long as one port is up.
- C. The same port has multiple untagged dynamic interfaces.
- D. Interface connection to two separate nonstacked switches is available.
- E. Full bandwidth of all links is available.
- F. Ports are grouped into multiple LAGs.

Answer: ABF

Explanation:

<https://community.cisco.com/t5/wireless-mobility-documents/lag-link-aggregation/ta-p/3128669>

NEW QUESTION 15

A customer has two Cisco 550B WLCs that manage all the access points in their network and provide N+1 redundancy and load balancing. The primary Cisco WLC has 60 licenses and the secondary Cisco WLC has 40. The customer wants to convert the N+1 model to an HA model and provide SSO. Configuration must be performed during a maintenance window. After performing all the configurations on both controllers, the config redundancy unit secondary command is issued on the secondary Cisco WLC and it fails. Which parameter needs to be in place to complete the configuration?

- A. A cable in the RP port
- B. The secondary Cisco WLC needs a minimum of 50 base licenses
- C. The primary Cisco WLC is already set as the secondary unit.
- D. SSO needs to be enabled

Answer: B

Explanation:

- With Release 7.4, an HA-SKU secondary controller can be configured as a backup controller for N+1 HA. For example, the following can be used as an HA-SKU controller:
 - 5508 Series Standalone controller with 50 AP license

NEW QUESTION 20

An AP is receiving 802.11 packets on its 802.11a radio with an RSSI value of -77 dBm. The current AP is part of an AP group that has been assigned an RF profile with RX-SOP set to Medium for 802.11a. Which action does the AP take with the packets?

- A. All frames are classified as non-Wi-Fi frames and are not decoded by the 5 GHz radio.
- B. Frames are decoded by the 2.4 GHz radio.
- C. All frames are classified as non-Wi-Fi frames and are not decoded by the 2.4 GHz radio.
- D. Frames are decoded by the 5 GHz radio.

Answer: C

NEW QUESTION 25

Campus users report a poor wireless experience. An engineer investigating the issue notices that in high-density areas, the wireless clients fail to switch the AP to which are automatically connected. This sticky client behavior is causing roaming issues. Which feature must the engineer configure?

- A. Load balancing and band select
- B. optimized roaming
- C. Layer 3 roaming
- D. Layer 2 roaming

Answer: B

Explanation:

https://www.cisco.com/c/en/us/td/docs/wireless/controller/technotes/80/hdx_final/b_hdx_dg_final/high_de

NEW QUESTION 30

Refer to the exhibit.

Global Configuration		
Redundancy Mgmt Ip	172.25.44.4	
Peer Redundancy Mgmt Ip	172.25.44.5	
Redundancy port Ip	169.254.44.4	
Peer Redundancy port Ip	169.254.44.5	
Redundant Unit	Primary	
Mobility Mac Address	60:73:5C:D1:76:00	
Keep Alive Timer (100 - 1000)	100	milliseconds
Keep Alive Retries (3 - 10)	3	
Peer Search Timer (60 - 300)	120	seconds
Management Gateway Failover	Enabled	
SSO	Disabled	

An enterprise is using wireless as the main network connectivity for clients. To ensure service continuity, a pair of controllers will be installed in a datacentre. An engineer is designing SSO on the pair of controllers. What needs to be included in the design to avoid having the secondary controller go into maintenance mode?

- A. The Keep alive timer is too low
- B. which causes synchronization problems.
- C. The connection between the redundancy ports is missing.
- D. The redundancy port must be the same subnet as the redundancy mgmt.
- E. The Global Configuration of SSO is set to Disabled on the controller.

Answer: B

Explanation:

'There are few scenarios where the Standby WLC may go into Maintenance Mode and not be able to communicate with the network and peer: • Non reachability to Gateway via Redundant Management Interface

• WLC with HA SKU which had never discovered peer • Redundant Port is down • Software version mismatch (WLC which boots up first goes into active mode and the other WLC in Maintenance Mode)' High Availability (SSO) Deployment Guide – Cisco

NEW QUESTION 33

A wireless engineer must optimize RF performance for multiple buildings with multiple types of construction and user density. Which two actions must be taken? (Choose two.)

- A. Configure Flexconnect groups for each building.
- B. Configure WMM profiles for each building.
- C. Configure AP groups for each area type.
- D. Configure RF profiles for each area type.
- E. Enable DTPC on the network.

Answer: CD

Explanation:

https://www.cisco.com/c/en/us/td/docs/wireless/controller/8-10/config-guide/b_cg810/configuring_ap_groups.html

NEW QUESTION 36

A wireless deployment in a high-density environment is being used by vendors to process credit card payment transactions via handheld mobile scanners. The scanners are having problems roaming between access points in the environment. Which feature on the wireless controller should have been incorporated in the design?

- A. RX SOP
- B. 802.11w
- C. AP Heartbeat Timeout
- D. Application Visibility Control

Answer: A

Explanation:

https://www.cisco.com/c/en/us/td/docs/wireless/controller/8-5/configguide/b_cg85/advanced_wireless_tuning.html

NEW QUESTION 41

Refer to the exhibit.

Name Prefix
Add APs
AP Type
Enable 11n Support ☐
802.11a/n/ac Antenna
802.11b/g/n Antenna
Protocol
Throughput 802.11a/n/ac
802.11b/g/n
Services: ☒ Advanced Options
☒ Data/Coverage
Safety Margin
☒ Voice
Safety Margin
☒ Location
☐ Location with Monitor Mode APs
☐ Demand
☐ Override Coverage Per AP
Per AP Area0 (sq feet)
Total Coverage Area 179312 (sq feet)

Recommended AP Count **74**
Data/Coverage **48**
Voice **48**
Location **59**
Location with Monitor
Mode APs
Demand

Floor Type: Cubes and Walled Offices

Add APs Automatically:
Realize and move the rectangle using the mouse over the desired coverage area, then specify placement criteris. Click "Calculate" to determine the number of APs recommended by NCS. If you are satisfied with the result, press "Apply". APs will be created and automatically positioned on the map.

Which two statements about Cisco Prime Infrastructure are true? (Choose two.)

- A. It presents the recommended number of APs for the selected coverage area based on the selections made.
- B. Planning mode requires a special license in Cisco Prime Infrastructure.
- C. It shows the map editor feature in Cisco Prime Infrastructure.
- D. Controllers must be synchronized with Cisco Prime Infrastructure for planning mode to work.
- E. It shows the planning mode feature in Cisco Prime Infrastructure.

Answer: DE

Explanation:

Use Planning Mode to Calculate Access Point Coverage Requirements

Prime Infrastructure planning mode lets you calculate the number of access points (APs) required to cover an area by placing fictitious APs on a map and viewing the coverage area. Based on the throughput specified for each protocol (802.11a/n or 802.11b/g/n), planning mode calculates the total number of APs required to provide optimum coverage in your network. You can calculate the recommended number and location of APs based on the following criteria:

NEW QUESTION 45

A wireless network consultant must assess an existing wireless LAN controller. Which section must the consultant check before replacing the old APs with APs that are IEEE 802.11ac-capable?

- A. number of AP licenses
- B. controller PSU
- C. throughput capacity
- D. software version

Answer: A

Explanation:

<https://www.cisco.com/c/en/us/products/collateral/wireless/catalyst-9100ax-access-points/nb-06-802-11ax-faq-c>

NEW QUESTION 48

A network administrator of a global organization is collapsing all controllers to a single cluster located in central Europe. Which concern must addressed?

- A. Some channels may not be available consistently across the organization.

- B. Different RF policies per office are not available in this configuration.
- C. Syslog must be configured to the time-zone of the NMS platform.
- D. Centralized controllers cannot uniformly authenticate global users.

Answer: C

Explanation:

https://www.cisco.com/c/en/us/td/docs/wireless/controller/technotes/86/b_Cisco_Wireless_LAN_Controller_Co

NEW QUESTION 49

Where must the APs be mounted when used in a high-density wireless network to provide 6 dB to 20 dB of attenuation to a cell?

- A. in the aisle
- B. under the seat
- C. above the stage
- D. under the stage

Answer: B

Explanation:

Under seat or under desk mounting can provide from 6 dB to 20 dB of attenuation to the cell,

NEW QUESTION 52

A customer has noticed that Client Band Select is enabled and no clients are utilizing the 5 GHz band. Which three parameters must be met to ensure that wireless clients use the 5 GHz band? (Choose three.)

- A. Ensure that channel bonding is enabled on the WLAN.
- B. Ensure that the co-channel interference has not exceeded -85 dBm.
- C. Ensure that the UNII-2 extended channels are enabled on the 802.11a radios.
- D. Ensure that the client is receiving RSSI above the minimum band select RSSI threshold.
- E. Ensure that the client is dual-band capable.
- F. Ensure that the WLAN has 802.11a enabled.

Answer: CEF

Explanation:

For 802.11a, countries are moving to open the frequency range 5.250–5.350 GHz (UNII-2).

The 5 GHz band in which 802.11a operates is divided into several different sections.

https://www.cisco.com/c/en/us/td/docs/solutions/Enterprise/Mobility/emob41dg/emob41dg-wrapper/ch3_WLA

NEW QUESTION 53

Which UDP port numbers are used for exchange mobility packets in an AireOS wireless deployment?

- A. UDP 16666 for control plane, EoIP (IP protocol 97) for data plane
- B. UDP 16668 for control plane, UDP 16667 for data plane
- C. UDP 16667 for control plane, UDP 16666 for data plane
- D. UDP 16666 for control plane, UDP 16667 for data plane

Answer: D

Explanation:

- Enable these UDP ports for Mobility traffic:

- 16666 - Secured Mode
- 16667 - Unsecured Mode

NEW QUESTION 57

A customer has multiple WLCs running N+1 redundancy with APs equally distributed. Only one WLC is a designated backup for all other WLCs so the customer must ensure that the most critical APs remain registered or get priority over other APs in case of a WLC failure. However, the customer notices on WLC failure that some critical APs remain unregistered. What needs to be addressed in the design?

- A. AP fallback is not enabled on the backup WLC.
- B. AP failover priority is not enabled globally on the backup WLC.
- C. AP failover priority is not enabled globally on the failed WLC.
- D. AP fallback is not enabled on the failed WLC.

Answer: C

NEW QUESTION 61

A customer called with a requirement that internal clients must be on different subnets depending on the building they are in, AP access points are operating in local mode and will not be modified, and this is a single controller solution. Which design approach creates the desired result?

- A. Create an SSID, place it to the desired VLAN under WLANs, and configure 802.1x in ISE to assign the correct VLAN based on the SSID from which the client is authenticating.
- B. Create FlexConnect groups, place the access points in
- C. and set the correct VLAN to SSID mapping based on location.
- D. Create AP groups for each desired location, map the correct VLANs to the internal SSID, and add the access points for that location.
- E. Create mobility anchors for the SSID, and on the controller under the internal SSID
- F. create a foreign map to the desired VLAN based on location.

Answer: C

NEW QUESTION 63

A medium-sized hospitality company with 50 hotels needs to upgrade the existing WLAN in each hotel to 802.11n. During the site surveys for each hotel, what needs to be taken into consideration when determining the locations for each AP?

- A. Selecting locations that are easily accessed so maintenance and upgrades can be performed quickly.
- B. Selecting AP locations where power is already available.
- C. Selecting APs that can be hidden in ceiling panels to provide a secure and clean aesthetic look.
- D. Selecting locations that make visual assessment of the AP operation easy.

Answer: B

NEW QUESTION 66

Which statement about the 9800 Series Wireless Controller mobility tunnel on a Cisco Catalyst 9800 controller is true?

- A. It is an IPsec tunnel with control path only.
- B. It is a CAPWAP tunnel with data path only.
- C. It is a CAPWAP tunnel with control path and data path.
- D. It is an IPsec tunnel with control path and data path.

Answer: C

Explanation:

The Cisco Catalyst 9800 Series Wireless Controller mobility tunnel is a CAPWAP tunnel with control path (UDP 16666) and data path (UDP 16667). The control path is DTLS encrypted by default. Data path DTLS can be enabled when you add the mobility peer.

https://www.cisco.com/c/en/us/td/docs/wireless/controller/9800/config-guide/b_wl_16_10_cg/mobility.html

NEW QUESTION 71

An engineer is designing an outdoor mesh network to cover several sports fields. The core of the network is located in a building at the entrance of a sports complex. Which type of antenna should be used with the RAP for backhaul connectivity?

- A. 5 GHz
- B. 8-dBi omnidirectional antenna
- C. 2.4 GHz
- D. 8-dBi patch antenna
- E. 2.4 GHz
- F. 14-dBi omnidirectional antenna
- G. 5 GHz
- H. 14-dBi patch antenna

Answer: A

Explanation:

https://www.cisco.com/c/en/us/products/collateral/wireless/aironet-antennas-accessories/product_data_sheet.html

NEW QUESTION 76

A customer is concerned about mesh backhaul link security. Which level of encryption does the backhaul link use?

- A. hash
- B. AES
- C. WEP
- D. 3DES

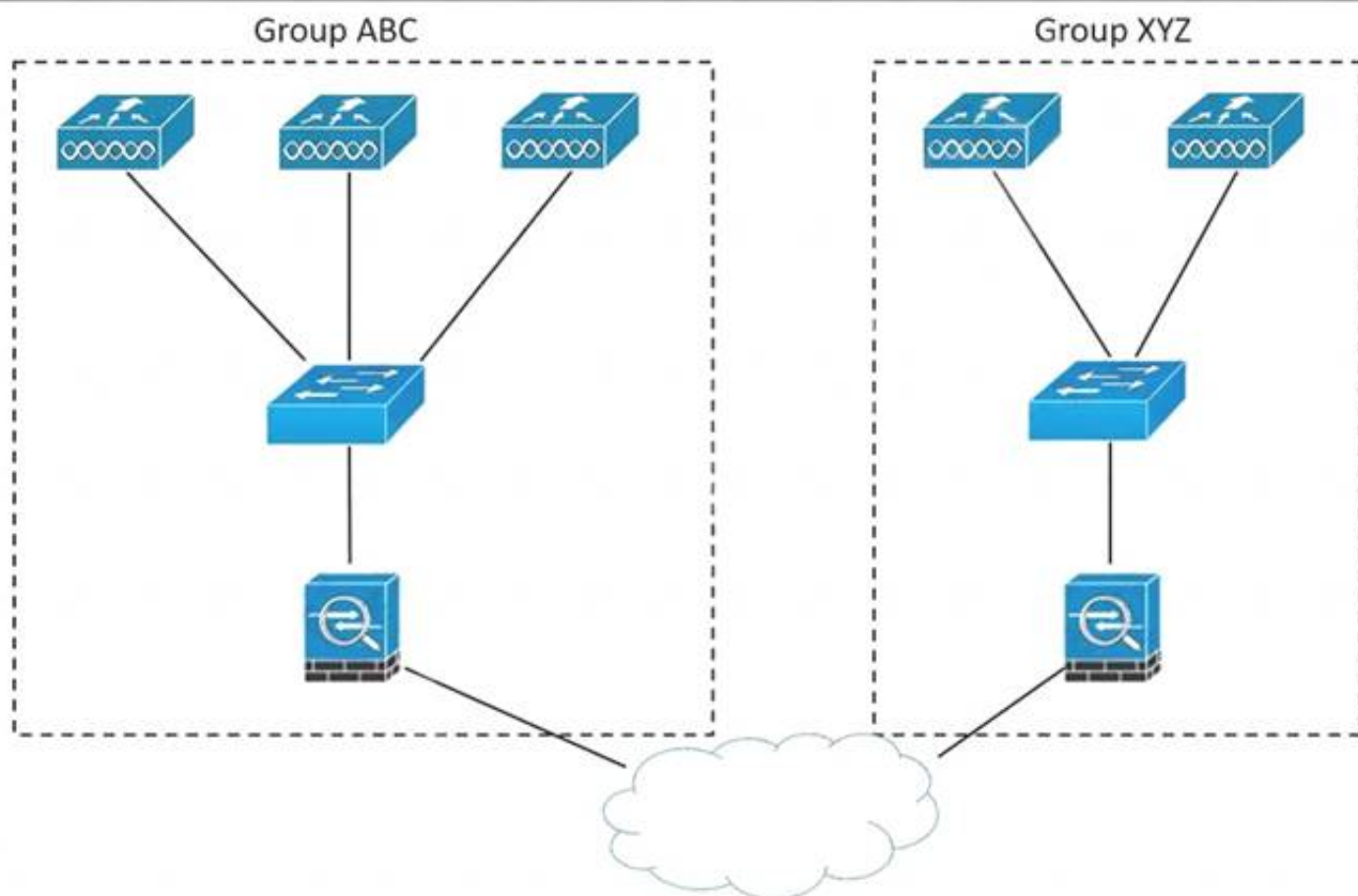
Answer: B

Explanation:

In a Cisco wireless backhaul network, traffic can be bridged between MAPs and RAPs. This traffic can be from wired devices that are being bridged by the wireless mesh or CAPWAP traffic from the mesh access points. This traffic is always AES encrypted when it crosses a wireless mesh link such as a wireless backhaul.

NEW QUESTION 77

Refer to the exhibit.



An enterprise has offices spread around the globe. The APs are connected to different controllers installed in separate datacenters. The IT team wants to allow clients to roam from controllers in group ABC to controllers in group XYZ. Which feature must be incorporated in the design to accomplish this task?

- A. switch peer group
- B. workgroup bridge
- C. mDNS gateway
- D. mobility lists

Answer: D

NEW QUESTION 81

Which three pieces of equipment are needed to conduct a fully measured wireless survey? (Choose three.)

- A. PoE battery
- B. spirit level
- C. access point
- D. tall tripod
- E. goggles
- F. ladder

Answer: ACD

Explanation:

https://www.cisco.com/c/en/us/td/docs/wireless/technology/mesh/81/design/guide/b_mesh_81/Site_Preparation_

NEW QUESTION 85

An engineer changed the TPC Power Threshold for a wireless deployment from the default value to -65 dBm. The engineer conducts a new post-deployment Survey to validate the results. What is the expected outcome?

- A. Increase cell size
- B. Decreased client signal strength
- C. Increased received sensitivity
- D. Decreased channel overlap

Answer: A

NEW QUESTION 87

The wireless team must configure a new voice SSID for optimized roaming across multiple WLCs with Cisco 8821 phones. Which two settings accomplish this goal? (Choose two.)

- A. Configure mobility groups between WLCs.
- B. Use Cisco Centralized Key Management for authentication.
- C. Configure AP groups between WLCs.
- D. Configure AVC profile on new SSID.
- E. Use AVC to tag traffic voice traffic as best effort.

Answer: AB

NEW QUESTION 91

An engineer is trying to determine the most cost-effective way to deploy high availability for a campus enterprise wireless network that currently leverages three wireless LAN controllers. Which architecture should the engineer deploy?

- A. N+1 solution without SSO
- B. N+1 with SSO
- C. N+N solution without SSO
- D. N+N with SSO

Answer: B

Explanation:

https://www.cisco.com/c/en/us/td/docs/wireless/technology/hi_avail/N1_High_Availability_Deployment_G

NEW QUESTION 93

Why is 802.11a connectivity reduced in an X-ray room?

- A. X-rays create significant non-Wi-Fi interference on the 802.11a band.
- B. X-rays impact the 802,11a UNII-2 channels that cause access points to dynamically change channels.
- C. X -rays within these rooms cause multipath issues.
- D. X-ray rooms exhibit increased signal attenuation.

Answer: A

Explanation:

portable X-ray machines, sending high-resolution images, sometimes in real time, echography machines, and electrocardiography [ECG] machines). These devices may also use the same spectrum as Wi-Fi but with other protocols and, therefore, become sources of interference for your system.

NEW QUESTION 97

Drag and drop the characteristics from the left onto the correct functionalities on the right.

complex configuration on the Cisco WLC and infrastructure

achieves optimal AP join process with src-dst-ip load-balancing

simple configuration on the Cisco WLC and infrastructure

avoids single point of failure on neighbor switches

Multiple AP-Manager Interfaces

LAG

- A. Mastered
- B. Not Mastered

Answer: A

Explanation:

https://www.cisco.com/c/en/us/td/docs/wireless/controller/7-4/configuration/guides/consolidated/b_cg74_CONS

NEW QUESTION 102

.....

Thank You for Trying Our Product

* 100% Pass or Money Back

All our products come with a 90-day Money Back Guarantee.

* One year free update

You can enjoy free update one year. 24x7 online support.

* Trusted by Millions

We currently serve more than 30,000,000 customers.

* Shop Securely

All transactions are protected by VeriSign!

100% Pass Your 300-425 Exam with Our Prep Materials Via below:

<https://www.certleader.com/300-425-dumps.html>