

## HPE6-A72 Dumps

### Aruba Certified Switching Associate Exam

<https://www.certleader.com/HPE6-A72-dumps.html>



### NEW QUESTION 1

Refer to the exhibit.

Using the static IP address configured above, what is the converted binary value of the third octet assigned to the local interface?

- A. 11010101
- B. 10110001
- C. 01001011
- D. 11111000

**Answer:** A

### NEW QUESTION 2

The customer has 778 developers testing computer games on the network. Which two actions resolve Broadcast storms? (Choose two.)

- A. Manually disable the redundant link to immediately resolve the impacted portion of the network.
- B. Utilize Spanning Tree to dynamically disable all redundant links in a segment.
- C. Setting switch ports to half-duplex will resolve Broadcast storms using Carrier Sense Multiple-Access Collision Detection (CSMA/CD).
- D. Enable single Area Open Shortest Path First (OSPF) on all Layer 2 switches, but do not enable routing.
- E. Utilize Spanning Tree to dynamically block Designated ports in addition to Alternate ports.

**Answer:** AB

### NEW QUESTION 3

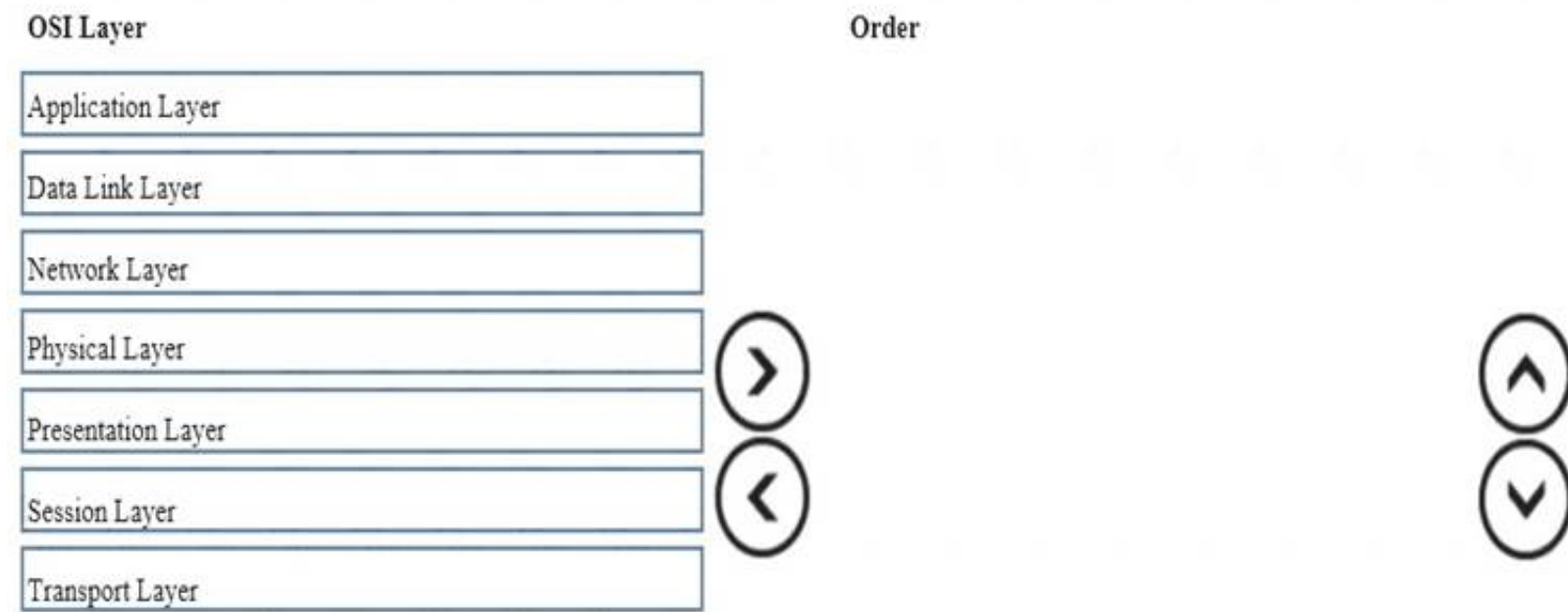
What is the login and password combination is used when first configuring an Aruba OS-CX switch from factory defaults?

- A. Login admin and password field empty.
- B. Login admin and password forgetme!
- C. Login admin and password password.

**Answer:** B

### NEW QUESTION 4

Place the OSI Layers in the correct order. Arrange them from least to greatest, starting with Layer 1 on the top, and progressing to Layer 7 on the bottom.



- A. Mastered
- B. Not Mastered

**Answer:** A

**Explanation:**

Graphical user interface, application Description automatically generated

**NEW QUESTION 5**

Which two statements accurately describe the features of NetEdit? (Choose two.)

- A. NetEdit can be used to configure and validate any third-party device that supports SSH and REST access.
- B. NetEdit includes trial licensing for up to 10 nodes.
- C. NetEdit can perform configuration and compliance validation.
- D. NetEdit supports viewing and editing multiple devices using a single deployment plan.
- E. NetEdit can run on a mobile device using Android or Apple IOS.

**Answer:** CD

**NEW QUESTION 6**

Which two options are correct regarding the IEEE 802.11ax standard? (Choose two.)

- A. allows transmissions of up to 4.8Gbps
- B. is an emerging satellite connection standard to allow wireless access anywhere in the world
- C. operates only in the 5GHz similar to 802.11ac
- D. operates in both the 2.4GHz and 5GHz radios bands
- E. is the first WLAN standard to no longer use electromagnetic signals to transmit data

**Answer:** AD

**NEW QUESTION 7**

Which two types of routes can be found in the IP routing table of an Aruba AOS-CX switch? (Choose two.)

- A. Local
- B. EIGRP
- C. BGP
- D. ISIS
- E. RIPng

**Answer:** AC

**NEW QUESTION 8**

You need to remote into an AOS-CX switch using SSH in order to update the management IP address for future connections. Unfortunately, you mis-configured the IP address and are now locked out of the switch.

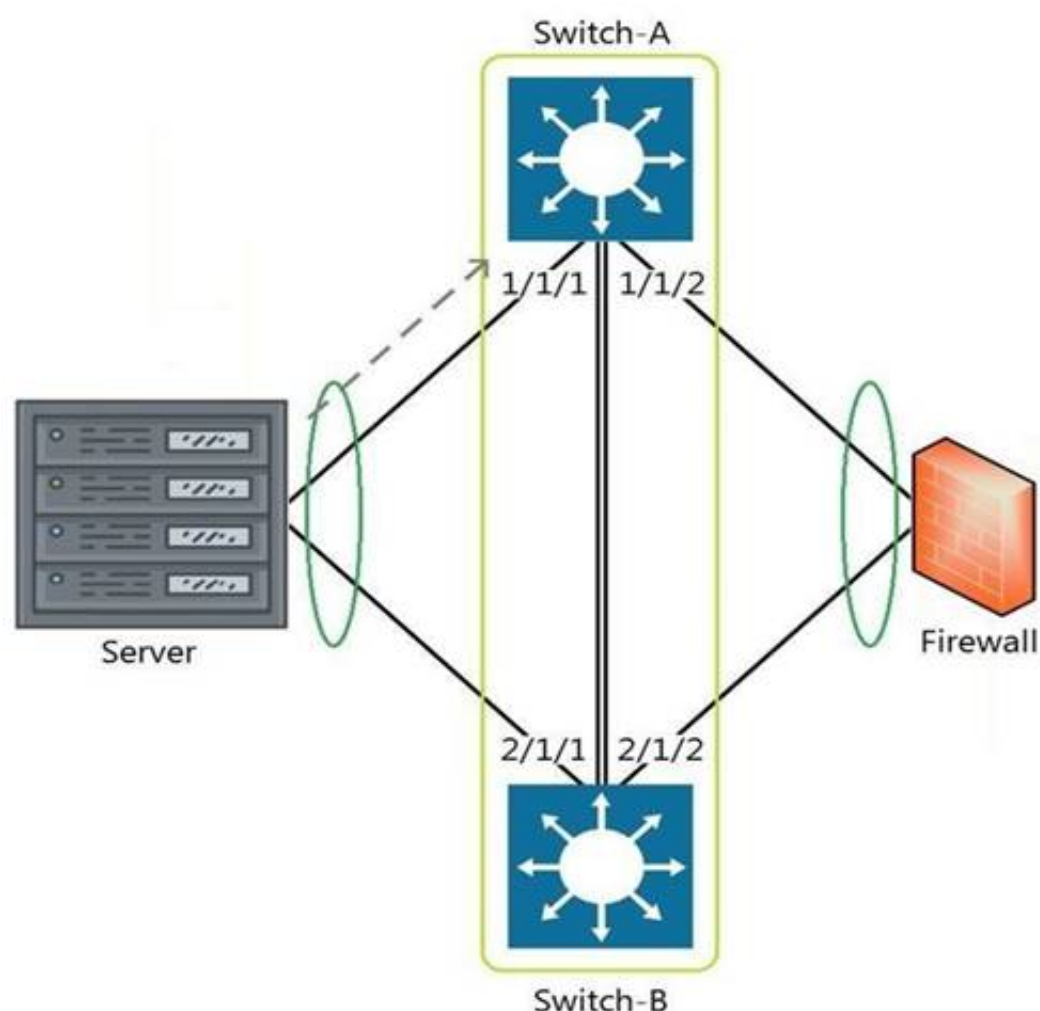
What command could you have issued before making changes that would have recovered the original switch configuration after ten minutes?

- A. checkpoint rollback 10
- B. checkpoint auto 10
- C. checkpoint auto confirm 10
- D. boot system secondary 10

**Answer:** B

**NEW QUESTION 9**

Refer to the exhibit.



The above scenario shows a packet from the Server destined for the Firewall. Switch-A and Switch-B are bundled as VSF stack. The LAG between the VSF stack and the firewall indicates a hash function to forward the packet on port 2/1/2.

Which statement is true regarding how Switch-A will forward the packet?

- A. Switch-A will forward the packet on port 1/1/2. VSF will override the typical LAG hash function used for the physical interface selection.
- B. Switch-A will drop the packet
- C. Multi-Chassis lag to multi-chassis lag is not a supported feature of VSF.
- D. Switch-A will encapsulate the packet using GRE to forward to Switch-B in order for the packet to egress on port 2/1/2 per the hash function.
- E. Switch-A will forward the packet along the VSF link to Switch-B so that it will egress on port 2/1/2 per the hash function.

**Answer:** D

#### NEW QUESTION 10

Match the terms to the correct layer of the OSI model.

Layer		Term
Transport Layer		Frames
Network Layer		Packets
Physical Layer		RF Signals
Data Link Layer		Segments

- A. Mastered
- B. Not Mastered

**Answer:** A

**Explanation:**

Layer		Term
Transport Layer	Data Link Layer	Frames
Network Layer	Network Layer	Packets
Physical Layer	Physical Layer	RF Signals
Data Link Layer	Transport Layer	Segments

#### NEW QUESTION 10

Refer to the exhibit.



Port	Type	Product Number	Serial Number	Part Number
1/1/1	SFP+DAC1	J9281D	CN95KBZ00X	8121-1300
1/1/2	SFP+DAC1	J9281D	CN95KBZ086	8121-1300
1/1/5	SFP-BT	J8177D	CN96KK232S	1990-4640
1/1/7	SFP-BT	J8177D	CN96KK20R2	1990-4640
1/1/8	SFP-BT	J8177D	CN96KK232F	1990-4640
1/1/25	SFP28DAC3	JL488A	CN97KBG0BJ	8121-1743
1/1/26	SFP28DAC3	JL488A	CN97KBG057	8121-1743
1/1/45	SFP28DAC3	JL488A	CN97KBG0CW	8121-1743
1/1/46	SFP28DAC3	JL488A	CN97KBG0CX	8121-1743
1/1/47	SFP28DAC3	JL488A	CN97KBG0D6	8121-1743
1/1/48	SFP28DAC3	JL488A	CN97KBG038	8121-1743

Core - 1#

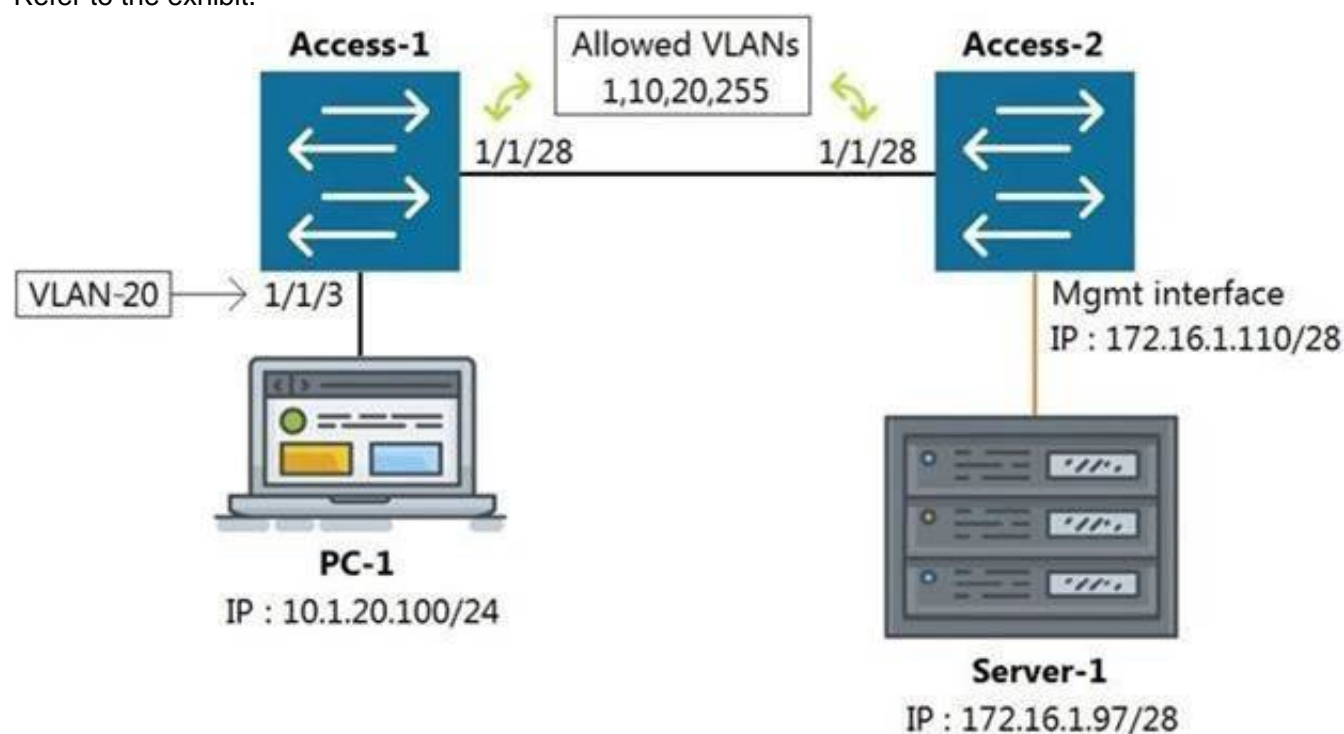
What command (output shown above) gives the optics serial number and part number information?

- A. show interface physical
- B. show interface transceiver
- C. show inventory
- D. show interface optics

**Answer: B**

### NEW QUESTION 13

Refer to the exhibit.



All switches are running Aruba OS-CX. While working in the terminal of Access-2, you are unable to reach Server-1 using SSH. What is the correct command to ping Server-1 from Access-2 to test reachability?

- A. Access-2# ping6 172.16.1.97 vrf mgm
- B. Access-2# ping 172.16.1.97
- C. Access-2# ping 172.16.1.97 vrf default
- D. Access-2# ping 172.16.1.97 vrf mgmt

**Answer: D**

### NEW QUESTION 14

What are two primary concerns regarding layer two loops in a redundant topology? (Choose two.)

- A. routing loops
- B. costs associated with upgrading from copper to fiber
- C. multiple frame copies leading to instability of the MAC address table
- D. security issues with a redundant loop indicating to hackers that a back-door exists
- E. broadcast storms

**Answer: CD**

### NEW QUESTION 15

Which switch supports a maximum of 8 line-cards, 3 fabric modules, and 2 management cards?

- A. Aruba 8400
- B. Aruba 8408
- C. Aruba 6410
- D. Aruba 5412r

Answer: A

#### NEW QUESTION 18

Refer to the exhibit.

```
Core-1# show interface mgmt
  Address Mode           : static
  Admin State            : up
  Mac Address            : 90:20:c2:bc:8e:01
  IPv4 address/subnet-mask : 10.1.1.1/24
  Default gateway IPv4    : 10.1.1.254
  IPv6 address/prefix     :
  IPv6 link local address/prefix:
  Default gateway IPv6    :
  Primary Nameserver      : 10.254.1.21
  Secondary Nameserver    :
Core-1# ping 10.1.1.254
connect: Network is unreachable
Core-1#
```

What change on Core-1 will result in a successful ping to 10.1.1.254 from the management interface?

- A. Use the command ping 10.1.1.254 vrf mgmt
- B. Use the command ping 10.1.1.254/24
- C. Change the Core-1 management address to 10.1.1.1/25 first
- D. The destination 10.1.1.254 requires configuring a static route

Answer: A

#### NEW QUESTION 23

What are the commands to disable SSH and HTTPS services from the default VRF?

- A. Core-1(config)# no ssh server Core-1(config)# no https-server
- B. Core-1# no ssh server vrf default Core-1# no https-server vrf default
- C. Core-1(config)# no ssh server enable Core-1(config)# no https-server enable
- D. Core-1(config)# no ssh server vrf default Core-1(config)# no https-server vrf default

Answer: D

#### NEW QUESTION 24

Which command will suppress LLDP messages from egressing on a given port while still allowing LLDP to be enabled on the switch?

- A. switch(config-if)# no lldp interface (port) transmit
- B. switch(config-if)# no lldp transmit
- C. switch(config-if)# no lldp receive
- D. switch(config)# no lldp

Answer: B

#### NEW QUESTION 29

Refer to the exhibit.

```

      Mstr
+---+ +---+
| 2 |1==1| 1 |
+---+ +---+

Access-1(config)#
```

What VSF command produces the above output?

- A. show vsf member
- B. show vsf link
- C. show vsf topology
- D. show vsf detail

Answer: C

#### NEW QUESTION 31

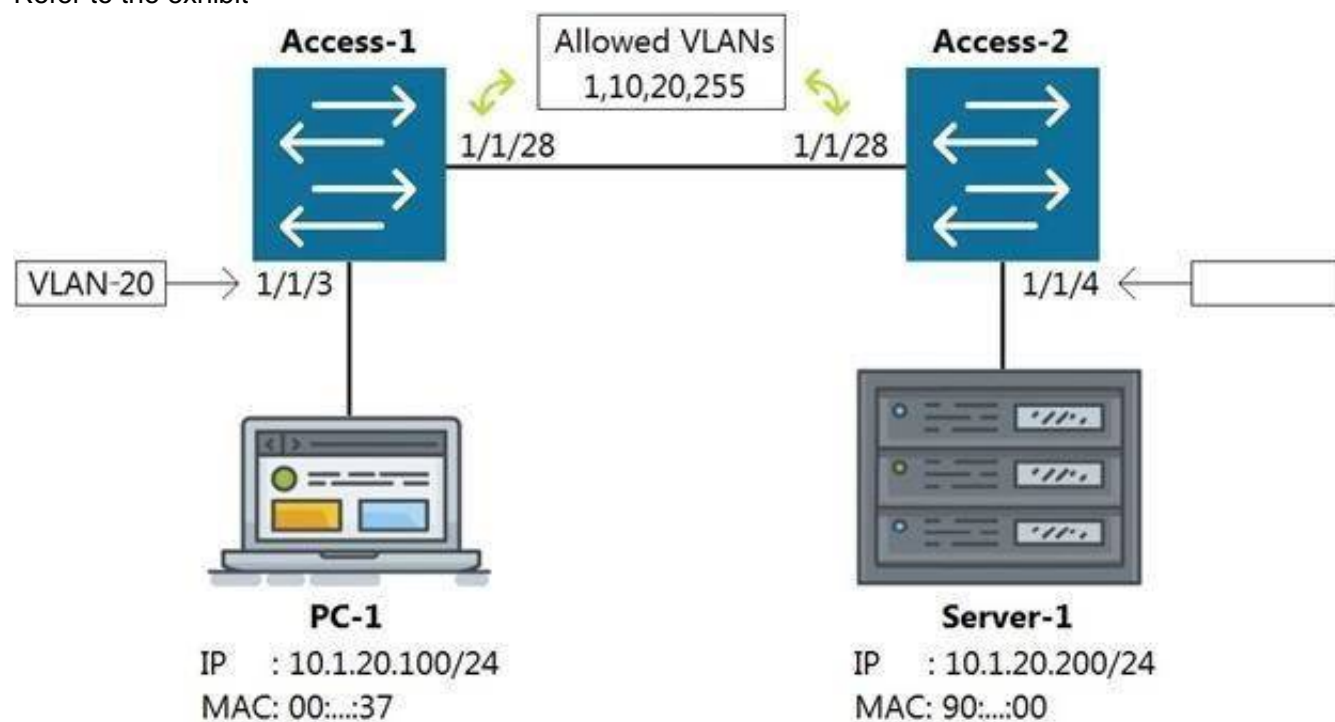
Your customer has 349 users in a two-story building. What are two benefits of a 2-Tier design? (Choose two.)

- A. Layer 2 and Layer 3 protocols run close to the endpoints to better implement ACL and QoS policy at the edge.
- B. Improved performance by offloading processing from the Access layer to the Core.
- C. Use of layer 2 switches at the access layer can process and route traffic from attached APs.
- D. Support for WAN/MPLS, Internet, and Data Center directly on the Collapsed core.
- E. Provides a more cost effective solution given that no additional switches are required for a third tier.

**Answer:** AE

#### NEW QUESTION 32

Refer to the exhibit



Which command on Access-2 port 1/1/4 will enable connectivity between PC-1 and Server-1 without any routing enabled in the network?

- A. Access-2 (config-if-1/1/4)# vlan access 1, 10, 20, 255
- B. Access-2 (config-if-1/1/4)# vlan access 20
- C. Access-2 (config-if-1/1/4)# vlan 20 untag 1/1/4
- D. Access-2 (config-if-1/1/4)# vlan trunk allow 1, 10, 255

**Answer:** B

#### NEW QUESTION 36

Refer to the exhibit.



You are in the process of configuring VSF between Access-1 and Access-2. Access-1 has been configured as the VSF Master. What is a valid configuration for Access-2 to join the VSF stack?

- A. Access-2# configureAccess-2(config)# vsf member 1 Access-2(config)# vsf renumber-to 2 Access-2(vsf-member-1)# link 2 2/1/28 Access-2(vsf-member-1)# exitThis will save the VSF configuration and reboot the switc
- B. Do you want to continue (y/n)? y
- C. Access-2# configureAccess-2(config)# vsf member 2 Access-2(vsf-member-1)# link 2 1/1/28 Access-2(vsf-member-1)# exit This will save the VSF configuration and reboot the switc
- D. Do you want to continue (y/n)? y
- E. Access-2# configureAccess-2(config)# vsf member 2 Access-2(vsf-member-1)# link 1 1/1/28 Access-2(vsf-member-1)# exit This will save the VSF configuration and reboot the switc
- F. Do you want to continue (y/n)? y
- G. Access-2# configureAccess-2(config)# vsf member 1 Access-2(vsf-member-1)# link 1 1/1/28 Access-2(vsf-member-1)# exit Access-2(config)# vsf renumber-to 2This will save the VSF configuration and reboot the switc
- H. Do you want to continue (y/n)? y

**Answer:** C

#### NEW QUESTION 41

What are two mechanisms supported on AOS-CX 6300 switches used in Multi-active Detection to determine the status of the Primary member? (Choose two.)

- A. Management interface split detection
- B. Peer switch-based detection
- C. Loopback keepalives
- D. ARP-based

E. BFD

**Answer:** AD

**NEW QUESTION 43**

Aruba Access Points tunnel traffic in a campus to the Mobility Controller using which protocol?

- A. Control and Provisioning of Wireless Access Points (CAPWAP)
- B. Generic Routing Encapsulation (GRE)
- C. Lightweight Access Point Protocol (LWAPP)
- D. Process Application Programming Interface (PAPI)

**Answer:** B

**NEW QUESTION 48**

Refer to the exhibit

```
Access-1(config)# show vlan
```

VLAN	Name	Status	Reason	Type	Interfaces
1	DEFAULT_VLAN_1	up	ok	default	1/1/1-1/1/28
50	Engineering	down	no_member_port	static	

What is true regarding VLAN 50 according to the diagram above?

- A. VLAN 50 is part of a switched virtual interface (SVI) that was never routed causing it to be down.
- B. Since VLAN 50 has not been assigned to any enabled physical port, the status is down.
- C. VLAN 50 is assigned only to Trunk ports which is why no ports are listed under interfaces.
- D. VLAN 50 was never added to the vlan-database and therefore is in a down state.

**Answer:** B

**NEW QUESTION 50**

What command will save your configuration on an Aruba AOS-CX switch so that your changes automatically load on next reboot?

- A. copy running-config checkpoint startup-config
- B. copy startup-config running-config
- C. copy running-config initial-checkpoint
- D. copy running-config default

**Answer:** A

**NEW QUESTION 52**

Which Ethernet port combination does the Aruba 5400R ZL2 switch series support?

- A. 10/100 Megabit Ethernet, Gigabit Ethernet, and 100 Gigabit Ethernet
- B. Gigabit Ethernet, 25 Gigabit Ethernet, and 40 Gigabit Ethernet
- C. 10/100 Megabit Ethernet, Gigabit Ethernet, 25 Gigabit Ethernet, and 100 Gigabit Ethernet
- D. 10/100 Megabit Ethernet, Gigabit Ethernet, and 40 Gigabit Ethernet

**Answer:** D

**NEW QUESTION 55**

.....



## Thank You for Trying Our Product

\* 100% Pass or Money Back

All our products come with a 90-day Money Back Guarantee.

\* One year free update

You can enjoy free update one year. 24x7 online support.

\* Trusted by Millions

We currently serve more than 30,000,000 customers.

\* Shop Securely

All transactions are protected by VeriSign!

**100% Pass Your HPE6-A72 Exam with Our Prep Materials Via below:**

<https://www.certleader.com/HPE6-A72-dumps.html>