

F5-Networks

Exam Questions 201

TMOS Administration



NEW QUESTION 1

A BIG-IP Administrator notices that one of the servers that runs an application is NOT receiving any traffic. The BIG-IP Administrator examines the configuration status of the application and observes the displayed monitor configuration and affected Pool Member status.



What is the possible cause of this issue?

- A. The Node Health Monitor is NOT responding.
- B. The application is NOT responding with the expected Receive String.
- C. HTTP 1.1 is NOT appropriate for monitoring purposes.
- D. The BIG-IP device is NOT able to reach the Pool.

Answer: A

NEW QUESTION 2

Administrative user accounts have been defined on the remote LDAP server and are unable to log in to the BIG-IP device. Which log file should the BIG-IP Administrator check to find the related messages?

- A. /var/log/secure
- B. /var/log/messages
- C. /Nar/log/ltm
- D. /var/log/user.log

Answer: A

NEW QUESTION 3

Which three iRule events are likely to be seen in iRules designed to select a pool for load balancing? (Choose three.)

- A. CLIENT_DATA
- B. SERVER_DATA
- C. HTTP_REQUEST
- D. HTTP_RESPONSE
- E. CLIENT_ACCEPTED
- F. SERVER_SELECTED
- G. SERVER_CONNECTED

Answer: ACE

NEW QUESTION 4

How should a BIG-IP Administrator control the amount of traffic that a newly enabled pool member receives.

- A. set the Slow Ramp Time
- B. set a Connection Limit
- C. set the Priority Group Activation
- D. set a Health Monitor

Answer: A

Explanation:

Slow Ramp Time
 Specifies the duration during which the system sends less traffic to a newly-enabled pool member. The amount of traffic is based on the ratio of how long the pool member has been available compared to the slow ramp time, in seconds. Once the pool member has been online for a time greater than the slow ramp time, the pool member receives a full proportion of the incoming traffic. Slow ramp time is particularly useful for the least connections load balancing mode. Setting this to a nonzero value can cause unexpected Priority Group behavior, such as load balancing to a low-priority member even with enough high-priority servers.

NEW QUESTION 5

A virtual server is defined per the charts. The last five client connections were to members C, D, A, B, B. Given the conditions shown in the above graphic, if a client with IP address 205.12.45.52 opens a connection to the virtual server, which member will be used for the connection.

- A. 172.16.20.1:80
- B. 172.16.20.2:80
- C. 172.16.20.3:80
- D. 172.16.20.4:80
- E. 172.16.20.5:80

Answer: D

NEW QUESTION 6

A BIG-IP Administrator sees the following error message in /var/log/ltm diskmonitor: *****; Disk partition shared has less than 30\$ free
 Which section of the Configuration Utility should the BIG-IP Administrator access to investigate this error message?

- A. Statistics > Analytics
- B. System > File Management
- C. Statistics > Module Statistics > System
- D. System > Disk Management

Answer: D

NEW QUESTION 7

A BIG-IP Administrator receives an RMA replacement for a failed F5 device. The BIG-IP Administrator tries to restore a UCS taken from the previous device, but the restore fails. The following error appears in the /var/log/itm.

mcpd [****J: •*****»;0; License is not operational (expired or digital signature does not match contents.)

What should the BIG-IP Administrator do to avoid this error?

- A. Use the appropriate tmsh command with the no-license option
- B. Revoke the license prior to restoring
- C. Reactivate the license on the new device using the manual activation method
- D. Remove the license information from the UCS archive

Answer: A

NEW QUESTION 8

A BIG-IP Administrator needs to load a UCS file but must exclude the license file. How should the administrator perform this task?

- A. From the CLI with command U tmsh load /\$sys ucs <ucs filename> no-license
- B. From the GUI, select the UCS file, uncheck the license box, and click restore
- C. From the CLI with command (tmsh)« tmsh load /sys ucs <ucs filename> no-license
- D. From the GUI, select the UCS file and click restore

Answer: A

NEW QUESTION 9

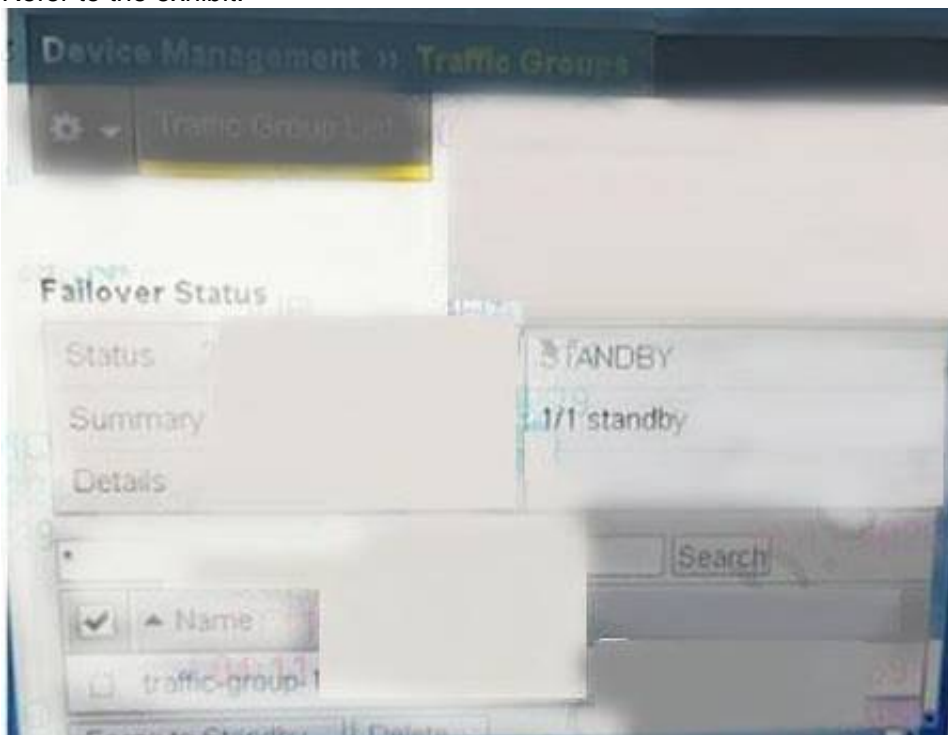
What is the status of a pool member when manual resume is enabled and a health check first fails and then passes?

- A. Offline (Disabled)
- B. Offline (Enabled)
- C. Available (Disabled)
- D. Available (Enabled)

Answer: A

NEW QUESTION 10

Refer to the exhibit.



A BIG-IP Administrator needs to fail over the active device. The administrator logs into the Configuration Utility and navigates to Device Management > Traffic Group. However, Force to Standby is greyed out. What is causing this issue?

- A. The BIG-IP Administrator is NOT logged into command line to tail over
- B. The BIG-IP Administrator is on the Standby Device
- C. The BIG-IP Administrator is logged in as root
- D. The BIG-IP Administrator is logged in as administrator

Answer: B

NEW QUESTION 10

Refer to the exhibit.



Why is the virtual server responsive to incoming connections?

- A. The pool member is disabled
- B. The pool member monitor failed
- C. The node is disabled.
- D. The node monitor failed

Answer: B

NEW QUESTION 12

A BIG-IP has a virtual server at 150.150.10.10:80 with SNAT automap configured. This BIG-IP also has a SNAT at 150.150.10.11 set for a source address range of 200.200.1.0 / 255.255.255.0. All other settings are at their default states. If a client with the IP address 200.200.1.1 sends a request to the virtual server, what is the source IP address when the associated packet is sent to the pool member?

- A. 200.200.1.1
- B. 150.150.10.11
- C. Floating self IP address on VLAN where the packet leaves the system
- D. Floating self IP address on VLAN where the packet arrives on the system

Answer: C

NEW QUESTION 13

A BIG-IP Administrator configures remote authentication and needs to make sure that users can still login even when the remote authentication server is unavailable.

Which action should the BIG-IP Administrators in the remote authentication configuration to meet this requirement?

- A. Set partition access to "All"
- B. Enable the Fallback to Local option
- C. Configure a remote role grove
- D. Configure a second remote user directory

Answer: B

NEW QUESTION 14

The BIG-IP Administrator generates a qkview using "qkview -SO" and needs to transfer the output file via SCP.

Which directory contains the output file?

- A. /var/log
- B. /var/tmp
- C. /var/local
- D. /var/config

Answer: B

NEW QUESTION 17

Refer to the exhibit.

Due to a change in application requirements, a BIG-IP Administrator needs to modify the configuration of a Virtual Server to include a Fallback Persistence Profile. Which persistence profile type should the BIG-IP Administrator use for this purpose?

- A. SSL
- B. Hash
- C. Universal
- D. Source Address Affinity

Answer: D

NEW QUESTION 22

You have created a custom profile named TEST2. The parent profile of TEST2 is named TEST1. If additional changes are made to TEST1, what is the effect on TEST2?

- A. All changes to TEST1 are propagated to TEST2.
- B. Some of the changes to TEST1 may propagate to TEST2.
- C. Changes to TEST1 cannot affect TEST2 once TEST2 is saved.
- D. When TEST1 is changed, the administrator is prompted and can choose whether to propagate changes to TEST2.

Answer: B

NEW QUESTION 25

A VLAN has the following objects configured:

Self-IP 10.10.10.100 with port lockdown set to Allow default Virtual server 10.10.10.100:443 with UDP profile enabled Virtual server 10.10.10.0/24 port forwarding virtual server

Global destination NAT forwarding 10.10.10.100 to internal server 172.168.10.100

Which object will process this request when https://10.10.10.100 is entered into a browser?

- A. self-IP 10.10.10.100 with port lockdown set to Allow default
- B. virtual server 10.10.100/24 port o forwarding virtual server
- C. global destination NAT forwarding 10.10.10.100 to internal server 172.168.10.100
- D. virtual server 10.10.10.100.443 with UDP profile enabled

Answer: A

NEW QUESTION 30

The current status of a given pool is offline (red). Which condition could explain that state? Assume the descriptions below include all monitors assigned for each scenario.

- A. No monitors are currently assigned to any pool, member or node.
- B. The pool has a monitor assigned to it, and none of the pool members passed the test.
- C. The pool has a monitor assigned to it, and only some of the pool's members passed the test.
- D. A monitor is assigned to all nodes and all nodes have passed the tes
- E. The pool's members have no specific monitor assigned to them.

Answer: B

NEW QUESTION 32

A development team needs to apply a software fix and troubleshoot one of its servers. The BIG-IP Administrator needs to immediately remove all connections from the BIG-IP system to the back end server. The BIG-IP Administrator checks the Virtual Server configuration and finds that a persistence profile is assigned to it. What should the BIG-IP Administrator do to meet this requirement?

- A. Set the pool member to a Forced Offline state and manually delete easting connections through the command line.
- B. Set the pool member to a Forced Offline state.
- C. Set the pool member to a Disabled state.
- D. Set the pool member to a Disabled state and manually delete existing connections through the command line.

Answer: A

NEW QUESTION 34

When using the setup utility to configure a redundant pair, you are asked to provide a "Failover Peer IP". Which address is this?

- A. an address of the other system in its management network
- B. an address of the other system in a redundant pair configuration
- C. an address on the current system used to listen for failover messages from the partner BIG-IP
- D. an address on the current system used to initiate mirroring and network failover heartbeat messages

Answer: B

NEW QUESTION 39

How is persistence configured?

- A. Persistence is an option within each pool's definition.
- B. Persistence is a profile type; an appropriate profile is created and associated with virtual server.
- C. Persistence is a global setting; once enabled, loadbalancing choices are superceded by the persistence method that is specified.
- D. Persistence is an option for each pool membe
- E. When a pool is defined, each member's definition includes the option for persistence.

Answer: B

NEW QUESTION 43

Where is the loadbalancing mode specified?

- A. within the pool definition
- B. within the node definition
- C. within the virtual server definition
- D. within the pool member definition

Answer: A

NEW QUESTION 44

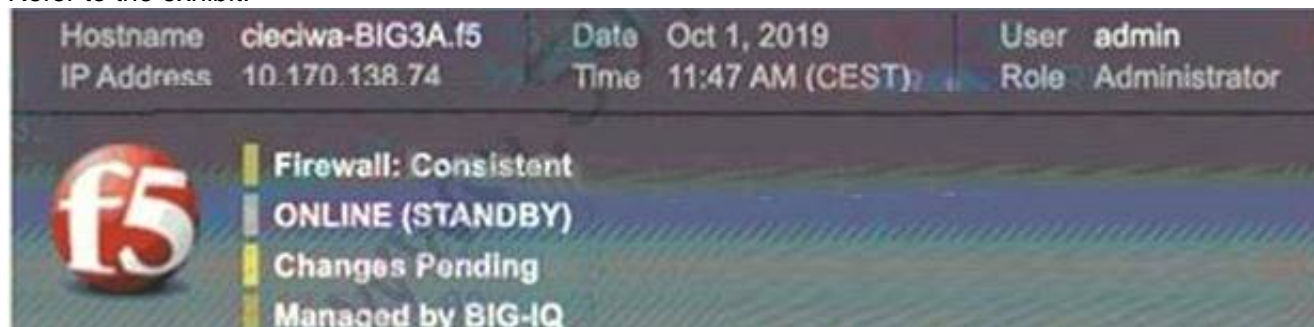
A web server administrator informs the BIG-IP Administrator that web servers are overloaded Starting next month, the BIG-IP device will terminate SSL to reduce web server load. The BIG-IP device is ready using client SSL client profile and Rules on HTTP level. What actions should the BIG-IP Administrators to achieve the desired configuration?

- A. Remove the server SSL profile and configure the Pool Members to use HTTP
- B. Remove the client SSL profile and configure the Pool Members to US HTTP
- C. Remove the chart SSL profile and change the Virtual Server to accept HTTP
- D. Remove the server SSL profile and change the Virtual Server to accept HTTP traffic

Answer: A

NEW QUESTION 46

Refer to the exhibit.



The BIG-IP Administrator has modified an iRule on one device of an HA pair. The BIG-IP Administrator notices there is NO traffic on the BIG-IP device in which they are logged into.

What should the BIG-IP Administrator do to verify if the iRule works correctly?

- A. Push configuration from this device to the group and start to monitor traffic on this device
- B. Pull configuration to this device to the cluster and start to monitor traffic on this device
- C. Log in to the other device in the cluster, push configuration from it, and start to monitor traffic on that device
- D. Log in to the other device in the cluster, pull configuration to it, and start to monitor traffic on that device

Answer: D

Explanation:

The device in the picture is a standby machine, of course there is no traffic, you need to log in to the host, and then pull the configuration to the host.

NEW QUESTION 50

Assume a client's traffic is being processed only by a NAT; no SNAT or virtual server processing takes place. Also assume that the NAT definition specifies a NAT address and an origin address while all other settings are left at their defaults. If the origin server were to initiate traffic via the BIG-IP, what changes, if any, would take place when the BIG-IP processes such packets?

- A. The BIG-IP would drop the request since the traffic didn't arrive destined to the NAT address.
- B. The source address would not change, but the destination address would be changed to the NAT address.
- C. The source address would be changed to the NAT address and destination address would be left unchanged.
- D. The source address would not change, but the destination address would be changed to a self-IP of the BIG-IP.

Answer: C

NEW QUESTION 54

Refer to the exhibit.



A BIG-IP Administrator creates a new Virtual Server to load balance SSH traffic. Users are unable to log on to the servers. What should the BIG-IP Administrator do to resolve the issue?

- A. Set Protocol to UDP
- B. Set HTTP Profile to None

- C. Set Source Address to 10.1.1.2
- D. Set Destination Addresses/Mask to 0.0.0.0/0

Answer: B

NEW QUESTION 58

Assuming that systems are synchronized, which action could take place if the fail over cable is connected correctly and working properly, but the systems cannot communicate over the network due to external network problems?

- A. If network failover is enabled, the standby system will assume the active mode.
- B. Whether or not network failover is enabled, the standby system will stay in standby mode.
- C. Whether or not network failover is enabled, the standby system will assume the active mode.
- D. If network failover is enabled, the standby system will go into active mode but only until the network recovers.

Answer: B

NEW QUESTION 61

An LTM device has a virtual server mapped to www.f5.com with a pool assigned. Users report that when browsing, they are periodically required to re-login to /resources/201.1.7.b.2_l.com. The objects are defined as follows:

Virtual server. Destination 192.168.245.100:443 netmask 255.255.255.0 Persistence: SSL session persistence

Profiles: HTTP/TCP

Which persistence method should the BIG-IP Administrator apply to resolve this issue?

- A. Source address affinity
- B. hexadecimal
- C. SIP
- D. Destination address affinity

Answer: A

NEW QUESTION 62

A virtual server at 10.10.1.100:80 has the rule listed below applied.

```
when HTTP_REQUEST { if {[HTTP::uri] ends_with "htm" } { pool pool1 } else if {[HTTP::uri] ends_with "xt" } { pool pool2 }
```

If a user connects to http://10.10.1.100/foo.txt which pool will receive the request?

- A. pool1
- B. pool2
- C. Non
- D. The request will be dropped.
- E. Unknow
- F. The pool cannot be determined from the information provided.

Answer: B

NEW QUESTION 66

Monitors can be assigned to which three resources? (Choose three.)

- A. NATs
- B. pools
- C. iRules
- D. nodes
- E. SNATs
- F. pool members
- G. virtual servers

Answer: BDF

NEW QUESTION 68

What is the purpose of MAC masquerading?

- A. to prevent ARP cache errors
- B. to minimize ARP entries on routers
- C. to minimize connection loss due to ARP cache refresh delays
- D. to allow both BIGIP devices to simultaneously use the same MAC address

Answer: C

NEW QUESTION 73

A node is a member of various pools and hosts different web applications. If a web application is unavailable, the BIG-IP appliance needs to mark the pool member down for that application pool. What should a BIG-IP Administrator deploy at the pool level to accomplish this?

- A. A UDP monitor with a custom interval/timeout
- B. A combination of ICMP + TCP monitor
- C. An HTTP monitor with custom send/receive strings
- D. A TCP monitor with a custom interval/timeout

Answer: C

Explanation:

Requiring all traffic to be HTTPS access requires HTTP requests to be redirected directly to HTTPS.

NEW QUESTION 74

A BIG-IP Administrator makes a configuration change to the BIG-IP device. Which file logs the message regarding the configuration change?

- A. /var/log/messages
- B. /var/log/audit
- C. /var/log/user.log
- D. /var/log/secure

Answer: B

Explanation:

About audit logging

Audit logging is an optional feature that togs messages whenever a BIG-IP® system object, such as a virtual server or a load balancing pool, is confined (that is, created, modified, or deleted). The BiGIP system logs the messages for these auditing events in the file /var/log'audit

There are three ways that objects can be configured

- By user action
- By system action
- By loading configuration data

Whenever an object is configured in one of these ways, the BIG-IP system logs a message to the audit log

NEW QUESTION 79

A BIG-IP Administrator configures a Virtual Server. Users report that they always receive a TCP RST packet to the BIG-IP system when attempting to connect to it. What is the possible reason for this issue?

- A. The virtual server Type is set to Internal
- B. The virtual server Type is set to Reject
- C. The virtual server Type is set to Drop
- D. The virtual server Type is set to Stateless

Answer: B

NEW QUESTION 83

Refer to the exhibit.



A pool member fails the monitor checks for about 30 minutes and then starts passing the monitor checks. New traffic is Not being sent to the pool member. What is the likely reason for this problem?

- A. The pool member is disabled
- B. Monitor Type is TCP Half Open
- C. Manual resume is enabled
- D. Time Until Up is zero

Answer: C

NEW QUESTION 85

A site needs a virtual server that will use an iRule to parse HTTPS traffic based on HTTP header values. Which two profile types must be associated with such a

virtual server? (Choose two.)

- A. TCP
- B. HTTP
- C. HTTPS
- D. ServerSSL

Answer: AB

NEW QUESTION 90

A 8IG-IP device is replaced with an RMA device. The BIG-IP Administrator renews the license and tries to restore the configuration from a previously generated UCS archive on the RMA device. The device configuration is NOT fully loading. What is causing the configuration load to fail?

- A. The Device Group is NOT configured for Full Sync.
- B. The US does NOT contain the full config
- C. The clock is NOT set correctly
- D. The Master Key is NOT restored

Answer: D

NEW QUESTION 92

Assume a BIG-IP has no NATs or SNATs configured. Which two scenarios are possible when client traffic arrives on a BIG-IP that is NOT destined to a self-IP? (Choose two.)

- A. If the destination of the traffic does not match a virtual server, the traffic will be discarded.
- B. If the destination of the traffic does not match a virtual server, the traffic will be forwarded based on routing tables.
- C. If the destination of the traffic matches a virtual server, the traffic will be processed per the virtual server definition.
- D. If the destination of the traffic matches a virtual server, the traffic will be forwarded, but it cannot be loadbalanced since no SNAT has been configured.

Answer: AC

NEW QUESTION 95

An ecommerce company is experiencing latency issues with online shops during Black Friday's peak season. The BIG-IP Administrator detects an overall high CPU load on the BIG-IP device and wants to move the top utilized Virtual Servers to a dedicated BIG-IP device. Where should the BIG-IP Administrator determine the problematic Virtual Servers?

- A. System > Plattform
- B. Local Traffic > Virtual Servers > Virtual Server List
- C. Local Traffic > Network Map
- D. Statistics > Module Statistics > Local Traffic > Virtual Servers

Answer: D

NEW QUESTION 97

When can a single virtual server be associated with multiple profiles?

- A. Neve
- B. Each virtual server has a maximum of one profile.
- C. Ofte
- D. Profiles work on different layers and combining profiles is common.
- E. Rarel
- F. One combination, using both the TCP and HTTP profile does occur, but it is the exception.
- G. Unlimite
- H. Profiles can work together in any combination to ensure that all traffic types are supported in a given virtual server.

Answer: B

NEW QUESTION 102

The interface 1.1 of the BIG-IP device has been connected to a link dedicated to traffic on VLAN 120. What should the BIG-IP Administrator do to receive traffic from the VLAN?

- A. Create a new VLAN object and set Customer Tag to 120
- B. Create a new VLAN object and assign the interface 1.1 untagged
- C. Create a new trunk object with interface 1.1 assigned
- D. Create a new trunk object and assign it to the VLAN

Answer: B

NEW QUESTION 106

Generally speaking, should the monitor templates be used as production monitors or should they be customized prior to use.

- A. Most templates, such as http and tcp, are as effective as customized monitors.
- B. Monitor template customization is only a matter of preference, not an issue of effectiveness or performance.
- C. Most templates, such as https, should have the receive rule customized to make the monitor more robust.
- D. While some templates, such as ftp, must be customized, those that can be used without modification are not improved by specific changes.

Answer: C

NEW QUESTION 108

Users are unable to reach an application. The BIG-IP Administrator checks the Configuration Utility and observes that the Virtual Server has a red diamond in front of the status. What is causing this issue?

- A. All pool members are down.
- B. The Virtual Server is receiving HTTPS traffic over HTTP virtual.
- C. The Virtual Server is disabled.
- D. All pool members have been disabled.

Answer: A

NEW QUESTION 110

Refer to the exhibit.



According to the shown Configuration Utility strings What is the setting of the User Directory configuration under the Authentication submenu?

- A. Local
- B. Managed
- C. Remote-TACACS+
- D. Default system configuration

Answer: C

NEW QUESTION 113

Which statement describes a typical purpose of iRules?

- A. iRules can be used to add individual control characters to an HTTP data stream.
- B. iRules can be used to update the timers on monitors as a server load changes.
- C. iRules can examine a server response and remove it from a pool if the response is unexpected.
- D. iRules can be used to look at client requests and server responses to choose a pool member to select for load balancing

Answer: A

NEW QUESTION 115

Assume a virtual server has a ServerSSL profile. What SSL certificates are required on the pool members?

- A. No SSL certificates are required on the pool members.
- B. The pool members.SSL certificates must only exist.
- C. The pool members.SSL certificates must be issued from a certificate authority.
- D. The pool members.SSL certificates must be created within the company hosting the BIGIPs.

Answer: B

NEW QUESTION 117

A BIG-IP Administrator is setting up a new BIG-IP device. The network administrator reports that the interface has an incompatible media speed. The BIG-IP Administrator needs to change this setting manually.

From which location should the BIG-IP Administrator perform this task?

- A. On the Front Console
- B. In the TMOS Shell Command line
- C. In the Configuration Utility, Network > Interface
- D. In the Configuration Utility, System > Configuration

Answer: C

NEW QUESTION 118

Which three methods can be used for initial access to a BIG-IP system? (Choose three.)

- A. CLI access to the serial console port
- B. SSH access to the management port
- C. SSH access to any of the switch ports
- D. HTTP access to the management port
- E. HTTP access to any of the switch ports

- F. HTTPS access to the management port
- G. HTTPS access to any of the switch ports

Answer: ABF

NEW QUESTION 123

A Virtual Server uses an iRule to send traffic to pool members depending on the URI. The BIG-IP Administrator needs to modify the pool member in the iRule. Which event declaration does the BIG-IP Administrator need to change to accomplish this?

- A. CLIENT_ACCEPTED
- B. HTTP_RESPONSE
- C. HTTP_REQUEST
- D. SERVER_CONNECTED

Answer: C

Explanation:

According to the URI distribution is the category of HTTP requests, need to trigger HTTP_REQUEST event.

NEW QUESTION 127

Which VLANs must be enabled for a SNAT to perform as desired (translating only desired packets)?

- A. The SNAT must be enabled for all VLANs.
- B. The SNAT must be enabled for the VLANs where desired packets leave the BIG-IP.
- C. The SNAT must be enabled for the VLANs where desired packets arrive on the BIG-IP.
- D. The SNAT must be enabled for the VLANs where desired packets arrive and leave the BIG-IP.

Answer: C

NEW QUESTION 129

A BIG-IP Administrator is receiving intermittent reports from users that SSL connections to the BIG-IP device are failing. Upon checking the log files, the BIG-IP Administrator notices the following error message:

ere tmm<instance>[<pid>]: 01260008:3: SSL transaction (TPS) rate limit reached

After reviewing statistics, the BIG-IP Administrator notices there are a maximum of 1200 client-side SSL TPS and a maximum of 800 server-side SSL TPS.

What is the minimum SSL license limit capacity the BIG-IP Administrator should upgrade to handle this peak?

- A. 2000
- B. 400
- C. 800
- D. 1200

Answer: D

NEW QUESTION 132

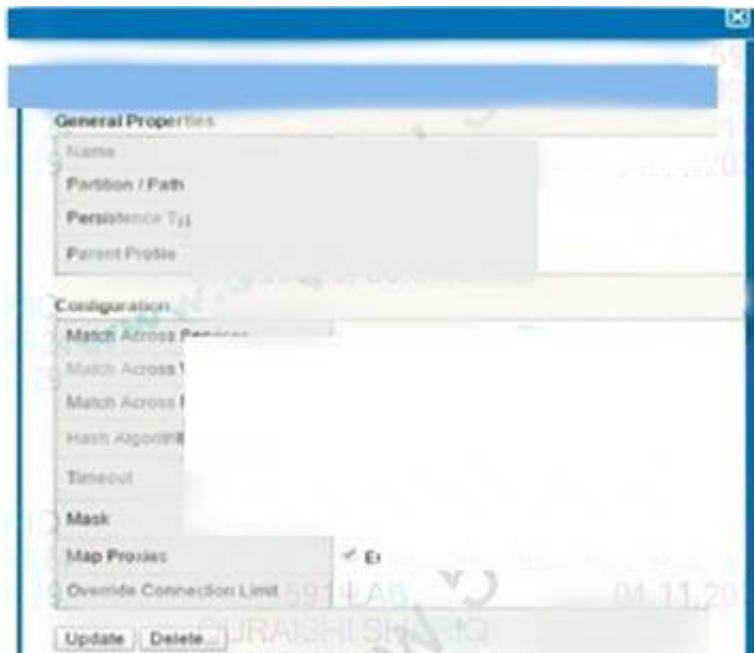
A BIG-IP Administrator uses a device group to share the workload and needs to perform service on a BIG-IP device currently active for a traffic group. The administrator needs to enable the traffic group to run on another BIG-IP device in the device group. What should the administrator do to meet the requirement?

- A. Create a new Traffic Group and then fail to Standby Unit
- B. Select Traffic Group and then select Failover
- C. Select Traffic Group and then select Force to Standby
- D. Select Traffic Group on Primary Unit and then select Demote

Answer: C

NEW QUESTION 136

Refer to the exhibit.



How long will the persistence record remain in the table?

- A. 180 seconds after the last packet

- B. 180 seconds after the initial table entry
- C. 300 seconds after the initial table entry
- D. 300 seconds after the last packet

Answer: D

NEW QUESTION 137

You need to terminate client SSL traffic at the BIG-IP and also to persist client traffic to the same pool member based on a BIG IP supplied cookie. Which four are profiles that would normally be included in the virtual server's definition? (Choose four.)

- A. TCP
- B. HTTP
- C. HTTPS
- D. ClientSSL
- E. ServerSSL
- F. CookieBased Persistence

Answer: ABDF

NEW QUESTION 141

Assume a virtual server has a ServerSSL profile. What SSL certificates are required on the BIG-IP?

- A. No SSL certificates are required on the BIG-IP.
- B. The BIG-IP's SSL certificates must only exist.
- C. The BIG-IP's SSL certificates must be issued from a certificate authority.
- D. The BIG-IP's SSL certificates must be created within the company hosting the BIG-IPs.

Answer: A

NEW QUESTION 144

When configuring a Virtual Server to use an iRule with an HTTP_REQUEST event, which lists required steps in a proper order to create all necessary objects?

- A. create profiles, create the iRule, create required pools, create the Virtual Server
- B. create the Virtual Server, create required pools, create the iRule, edit the Virtual Server
- C. create a custom HTTP profile, create required pools, create the Virtual Server, create the iRule
- D. create required pools, create a custom HTTP profile, create the iRule, create the Virtual Server

Answer: B

NEW QUESTION 146

How should a BIG-IP Administrator persistent sessions from being sent to a pool member so that the server administrator can perform maintenance?

- A. force the pool member offline
- B. disable the pool member
- C. add an additional monitor to the pool
- D. disable the virtual server

Answer: A

NEW QUESTION 151

A BIG-IP Administrator is working with a BIG-IP device and discovers that one of the Interfaces on a Trunk is DOWN. What is the reason for this Interface status?

- A. The switch is NOT connected to the Interface
- B. There is NO transceiver installed on the Interface
- C. There is NO default route configured for this trunk
- D. The media speed of the interface has NOT been set

Answer: A

NEW QUESTION 155

A BIG-IP Administrator contacts F5 Support, which identifies a suspected hardware failure. Which information should the BIG-IP Administrator provide to F5 Support?

- A. Qkview, EUD output
- B. Qkview, UCS archive, core files
- C. Qkview, part numbers for failed components
- D. Qkview, packet capture, UCS archive

Answer: A

NEW QUESTION 157

Refer of the exhibit.

```
show /cm device bigip1.local bigip3.local
```

```
CentMgmt::Device: bigip1.local
```

```
-----
Hostname                bigip3.local
Mgmt Ip                 172.1.1.233
Configsync Ip          10.1.1.43
Mirroring IP           ::
Mirroring Secondary IP ::
Failover Multicast IP  ::
Failover Unicast IP(s) 10.1.1.43
Device HA State        standby
Device HA Load Capacity 0
Device Current Load Factor 0
Device Next Active Load Factor 0
Time Delta to Local Device (sec) 12
-----
```

The 816-IP Administrator runs the command shown and observes a device trust issue between BIG-IP devices in a device group. The issue prevents config sync on device bigip3.local.

What is preventing the config sync?

- A. Next Active Load factor is 0 on bigip1.local
- B. Both devices are standby
- C. Next Active Load factor is 1 on bigip1.local
- D. Time Delta to local system is 12

Answer: A

Explanation:

Option A should be bigip3.local?. if choose bigip3.local, you should choose A.

NEW QUESTION 162

A BIG-IP Administrator is making adjustments to an iRule and needs to identify which of the 235 virtual server configured on the BIG-IP device will be affected.

How should the administrator obtain this information in an effective way?

- A. Local Traffic > Virtual Server
- B. Local traffic Pools
- C. LOCAL Traffic > Network Map
- D. Local traffic > Rules

Answer: C

NEW QUESTION 166

Where is connection mirroring configured?

- A. It an option within a TCP profile.
- B. It is an optional feature of each pool.
- C. It is not configured; it is default behavior.
- D. It is an optional feature of each virtual server.

Answer: D

NEW QUESTION 171

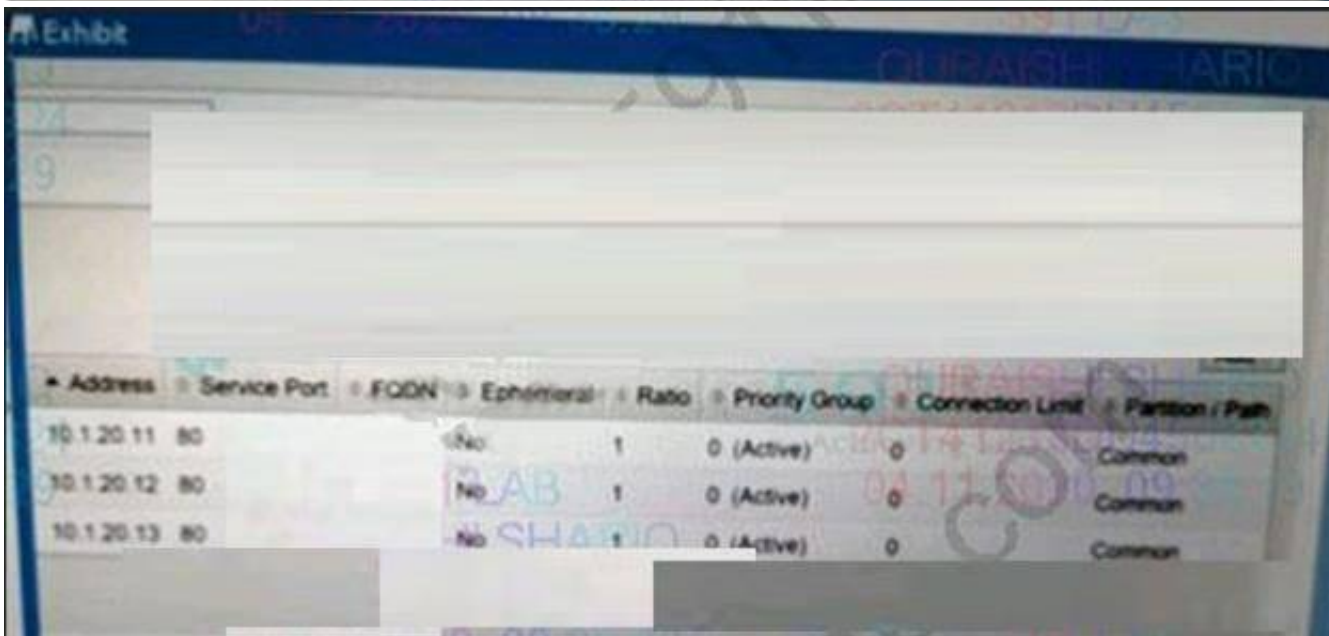
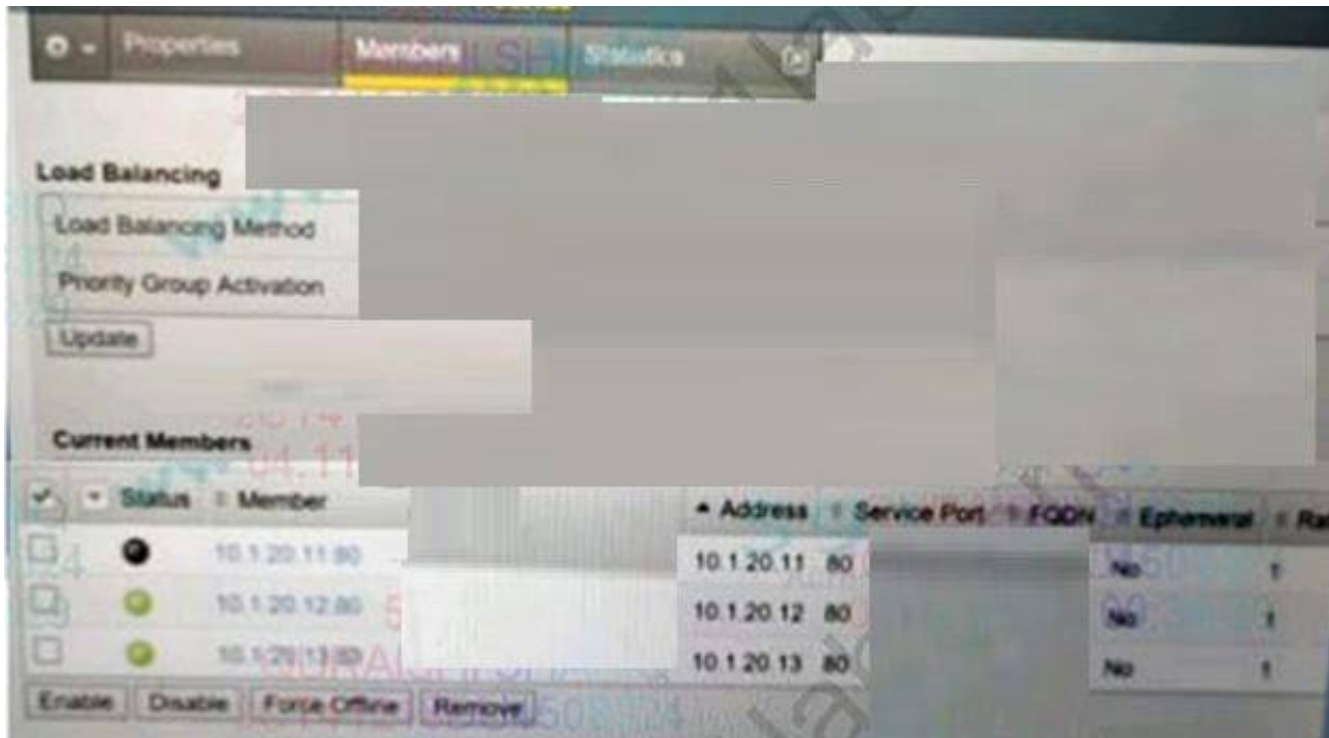
Assume a client's traffic is being processed only by a NAT; no SNAT or virtual server processing takes place. Also assume that the NAT definition specifies a NAT address and an origin address while all other settings are left at their defaults. If a client were to initiate traffic to the NAT address, what changes, if any, would take place when the BIG-IP processes such packets?

- A. The source address would not change, but the destination address would be translated to the origin address.
- B. The destination address would not change, but the source address would be translated to the origin address.
- C. The source address would not change, but the destination address would be translated to the NAT's address.
- D. The destination address would not change, but the source address would be translated to the NAT's address.

Answer: A

NEW QUESTION 172

Refer to the exhibit.



During maintenance, the BIG-IP Administrator manually disables a pool member as shown. What is the result?

- A. All pool members continue to process persistent connections
- B. All pool members stop accepting new connections.
- C. The disabled pool member stops processing persistent connections.
- D. The disabled pool member stops processing existing connections

Answer: A

NEW QUESTION 173

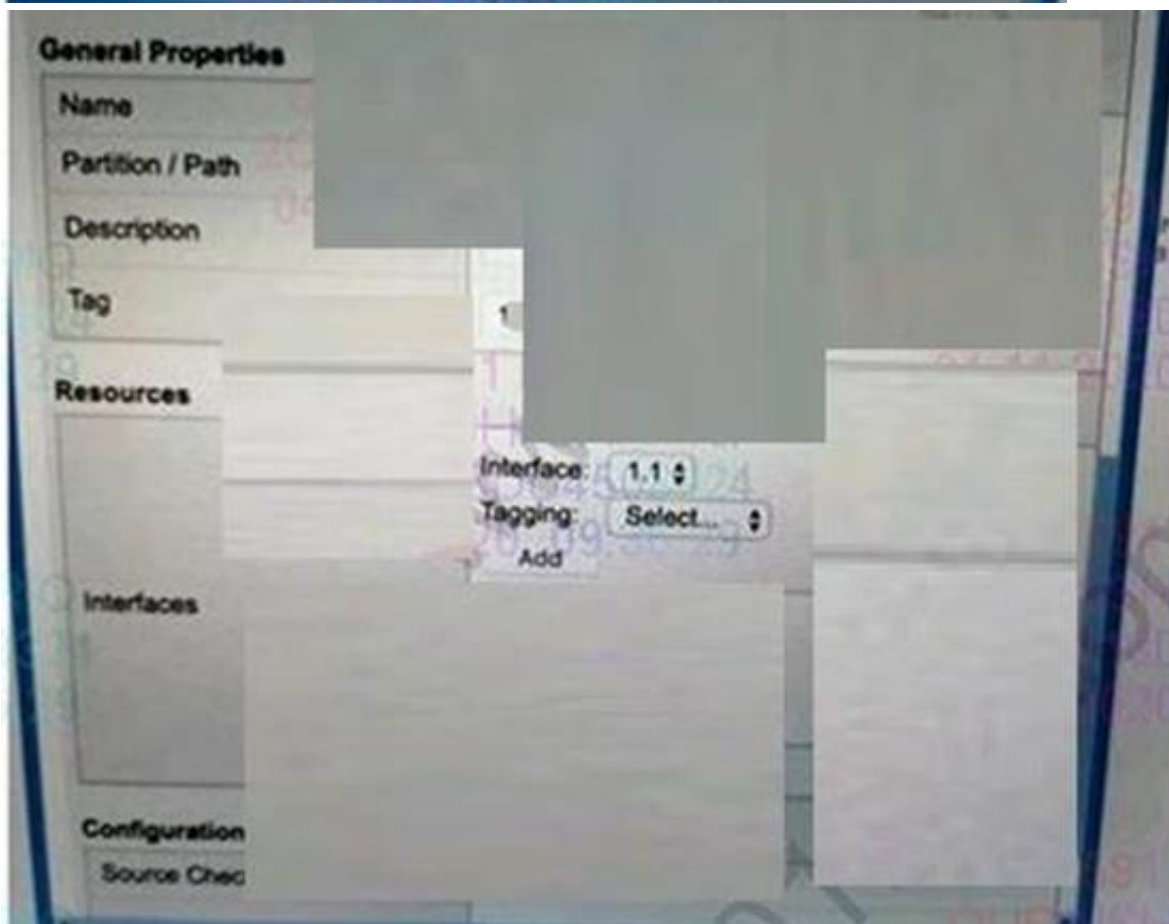
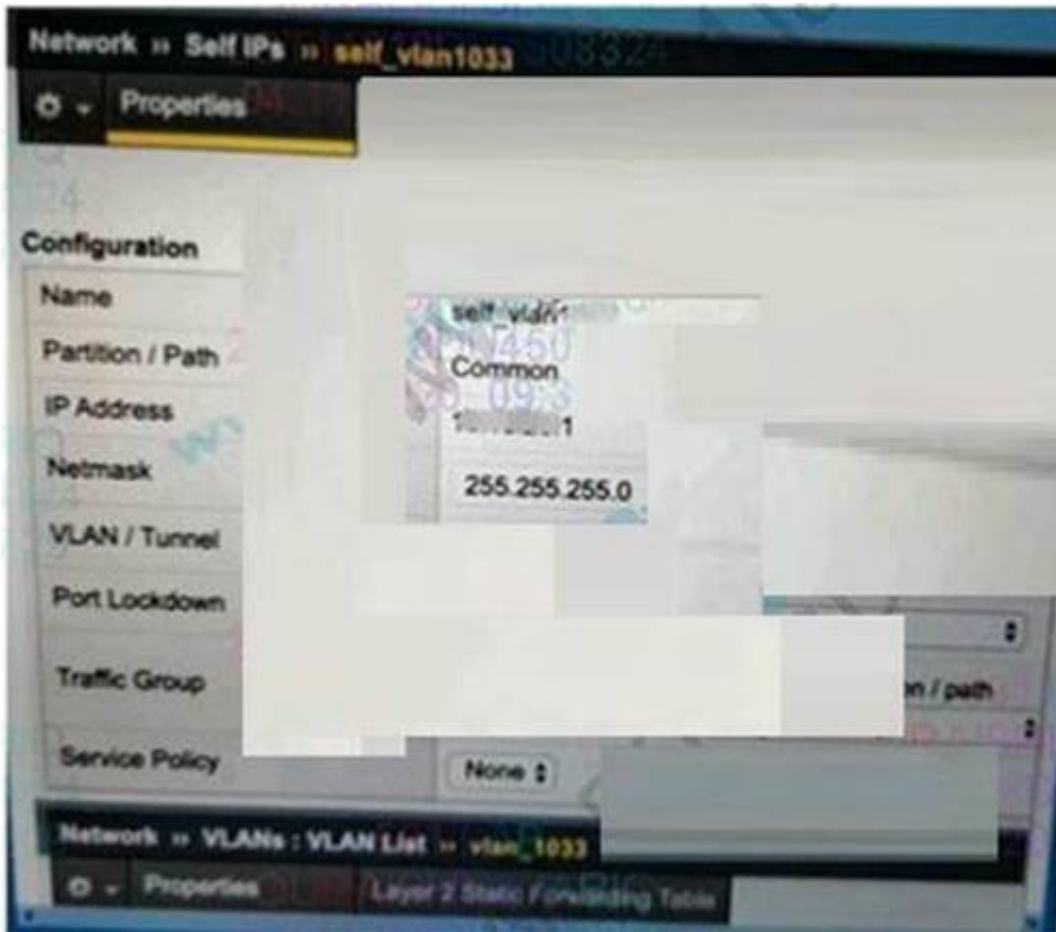
A BIG-IP Administrator plans to resolve a non-critical issue with a BIG-IP device in 2 weeks. What Severity level should be assigned to this type of F5 support ticket?

- A. 4
- B. 2
- C. 3
- D. 1

Answer: A

NEW QUESTION 177

Refer to the exhibit



The network team creates a new VLAN on the switches. The BIG-IP Administrator needs to create a configuration on the BIG-IP device. The BIG-IP Administrator creates a new VLAN and Self IP, but the servers on the new VLAN are NOT reachable from the BIG-IP device. Which action should the BIG-IP Administrators to resolve this issue?

- A. Set Port Lockdown of Set IP to Allow All
- B. Change Auto Last Hop to enabled
- C. Assign a physical interface to the new VLAN
- D. Create a Floating Set IP Address

Answer: C

NEW QUESTION 180

Which type of Virtual Server requires the use of a FastL4 profile?

- A. Performance (Layer 4)
- B. Stateless
- C. Performance (HTTP)
- D. Standard

Answer: A

NEW QUESTION 181

Which method is recommended for creating a new user from the CLI?

- A. Run 'f5adduser username' then 'f5passwd username' from bash or tmsh
- B. Run 'tmsh create auth user username prompt for password' from bash
- C. edit bigip.conf to add the new user and the user's clear-text password

D. Run `useradd username` then `'passwd username'` from `bash tmsh`

Answer: B

NEW QUESTION 186

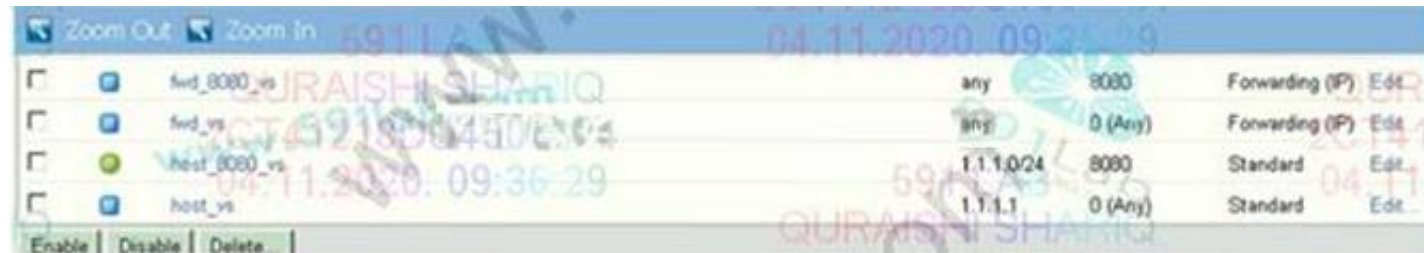
The BIG-IP Administrator configures an HTTP monitor with a specific receive string. The status is marked 'down'. Which tool should the administrator use to identify the problem?

- A. Ping
- B. Health
- C. tcpdump
- D. ifconfig

Answer: C

NEW QUESTION 189

Refer to the exhibit



Virtual Server	Destination	Port	Protocol	Mode	Actions
fwd_8080_vs	any	8080	Forwarding (IP)	Forwarding	Edit
fwd_vs	any	0 (Any)	Forwarding (IP)	Forwarding	Edit
host_8080_vs	1.1.1.0/24	8080	Standard	Standard	Edit
host_vs	1.1.1.1	0 (Any)	Standard	Standard	Edit

A connection is being established to IP 1.1.1.1 on port 8080. Which virtual server will handle the connection?

- A. fwd_8080_vs
- B. host_vs
- C. host_8080_VS
- D. fwdvs

Answer: B

NEW QUESTION 192

A Standard Virtual Server for a web application is configured with Automap for the Source Address Translation option. The original source address of the client must be known by the backend servers. What should the BIG-IP Administrator configure to meet this requirement?

- A. The Virtual Server type as Performance (HTTP)
- B. An HTTP profile to insert the X-Forward-For header
- C. An HTTP Transparent profile
- D. A SNAT Pool with the client IP

Answer: B

Explanation:

Because it is a web application, you can insert the source IP in the xff field in the http profile.

NEW QUESTION 195

Assuming other failover settings are at their default state, what would occur if the failover cable were to be disconnected for five seconds and then reconnected?

- A. As long as network communication is not lost, no change will occur.
- B. Nothin
- C. Failover due to loss of voltage will not occur if the voltage is lost for less than ten seconds.
- D. When the cable is disconnected, both systems will become activ
- E. When the voltage is restored, unit two will revert to standby mode.
- F. When the cable is disconnected, both systems will become activ
- G. When the voltage is restored, both systems will maintain active mode.

Answer: C

NEW QUESTION 199

Refer to the exhibit.

A BIG-IP Administrator configures a new VLAN on an HA pair of devices that does NOT yet have any traffic. This action causes the assigned traffic group to fail over to the standby device.

Which VLAN setting should be changed to prevent this issue?

- A. Auto Last Hop
- B. Fail-safe
- C. Customer Tag
- D. Source Check

Answer: B

NEW QUESTION 203

Which two statements are true concerning the default communication between a redundant pair of BIG-IP systems? (Choose two.)

- A. Synchronization occurs via a TCP connection using ports 683 and 684.
- B. Connection mirroring data is shared via a TCP connection using port 1028.
- C. Persistence mirroring data is shared via a TCP connection using port 1028.
- D. Connection mirroring data is shared through the serial fail over cable unless network failover is enabled.

Answer: BC

NEW QUESTION 207

Which process or system can be monitored by the BIG-IP system and used as a failover trigger in a redundant pair configuration?

- A. bandwidth utilization
- B. duplicate IP address
- C. CPU utilization percentage
- D. VLAN communication ability

Answer: D

NEW QUESTION 209

For a given Virtual Server, the BIG-IP must perform SSL Offload and negotiate secure communication over TLSv1.2 only. What should the BIG-IP Administrator do to meet this requirement?

- A. Configure a custom SSL Profile (Client) and select no TLSv1 in the options list
- B. Configure a custom SSL Profile (Client) with a custom TLSV1.2 cipher string
- C. Configure a custom SSL Profile (Server) and select no TLSv1 in the options list
- D. Configure a custom SSL Profile (Server) with a custom TLSV1.2 cipher string

Answer: B

Explanation:

no TLSv1 only disables TLS1.0, TLS1.1 is still used and does not meet the requirements.

NEW QUESTION 214

The BIG-IP Administrator needs to perform a BIG-IP device upgrade to the latest version of TMOS. Where can the administrator obtain F5 documentation on upgrade requirements?

- A. AskF5
- B. DevCentral
- C. Bug Tracker
- D. iHealth

Answer: A

NEW QUESTION 219

A virtual server is defined using a source address based persistence profile. The last five connections were A, B, C, A, C . Given the conditions shown in the graphic, if a client with IP address 205.12.45.52 opens a connection to the virtual server, which member will be used for the connection?

- A. 10.10.20.1:80
- B. 10.10.20.2:80
- C. 10.10.20.3:80
- D. 10.10.20.4:80
- E. 10.10.20.5:80

Answer: B

NEW QUESTION 222

Refer to the exhibit.

Filesystem	Size	Used	Avail	Use%	Mounted on
/dev/md4	427M	427M	0	100%	/
none	16G	2.3M	16G	1%	/dev/shm
/dev/md6	3.2G	78M	2.9G	3%	/config
/dev/md5	4.0G	3.1G	696M	82%	/usr
/dev/md7	3.0G	663M	2.2G	24%	/var
/dev/md1	30G	7.6G	21G	27%	/shared
/dev/md2	6.9G	191M	6.4G	3%	/var/log
none	16G	51M	16G	1%	/shared/rnd.1.2
none	16G	21M	16G	1%	/var/tmstat
none	16G	1.6M	16G	1%	/var/run
prompt	4.0M	28K	4.0M	1%	/var/prompt
none	16G	0	16G	0%	/var/loipc

The BIG-IP Administrator is investigating disk utilization on the BIG-IP device. What should the BIG-IP Administrator check next?

- A. Large files on the / file system
- B. Results from the EUD test
- C. Results from the platform diagnostics test
- D. Large files on /usr file system

Answer: A

NEW QUESTION 225

A custom HTTP monitor is failing to a pool member 10.10.3.75:8080 that serves up www.example.com. A ping works to the pool member address. The SEND string that the monitor is using is: GET/HTTP/1.1/r/n/Host.www.example.com/r/n/Connection Close/r/n/r/n Which CLI tool syntax will show that the web server returns the correct HTTP response?

- A. curlhttp://10.10.10.3.75:8080/www.example.com/index.html
- B. curl-header 'Host:www.example.com' http://10.10.3.75:8080/
- C. tracepath 'http://www.example.com:80
- D. tracepath 10.10.3.75:8080 GET /index

Answer: B

NEW QUESTION 227

A BIG-IP Administrator has configured a BIG-IP cluster with remote user authentication against dc01.f5tn.com. Only local users can successfully log into the system. Configsync is also failing.

Which two tools should the BIG-IP Administrator use to further investigate these issues? (Choose two)

- A. ntpq
- B. pam_timestamp_check
- C. passwd
- D. pwck
- E. dig

Answer: AC

NEW QUESTION 228

Assume a virtual server is configured with a ClientSSL profile. What would the result be if the virtual server's destination port were not 443?

- A. SSL termination could not be performed if the virtual server's port was not port 443.
- B. Virtual servers with a ClientSSL profile are always configured with a destination port of 443.
- C. As long as client traffic was directed to the alternate port, the virtual server would work as intended.
- D. Since the virtual server is associated with a ClientSSL profile, it will always process traffic sent to port 443.

Answer: C

NEW QUESTION 231

Refer to the exhibit. The BIG-IP Administrator needs to avoid overloading any of the Pool Members with connections, when they become active. What should the BIG-IP Administrator configure to meet this requirement?

- A. Different Ratio for each member
- B. Same Priority Group to each member
- C. Action On Service Down to Reselect
- D. Slow Ramp Time to the Pool

Answer: D

NEW QUESTION 234

New Syslog servers have been deployed in an organization. The BIG-IP Administrator must reconfigure the BIG-IP system to send log messages to these servers. In which location in the Configuration Utility can the BIG-IP Administrator make the needed configuration changes to accomplish this?

- A. System > Logs > Configuration
- B. System > Configuration > Local Traffic
- C. System > Logs > Audit
- D. System > Configuration > Device

Answer: A

NEW QUESTION 238

A local user account (Users) on the BIG-IP device is assigned the User Manager role. User1 attempts to modify the properties of another account (User2), but the action fails. The BIG-IP Administrator can successfully modify the User2 account. Assuming the principle of least privilege, what is the correct way to allow User 1 to modify User2 properties?

- A. Move User2 to the same partition as User1
- B. Grant User1 administrative privileges
- C. Move User to the same partition as User2.
- D. Modify the partition access for User 1

Answer: D

NEW QUESTION 242

A BIG-IP Administrator needs to configure the BIG-IP system to perform load balancing for FTP servers running passive mode FTP. How should the administrator configure the Virtual Server to perform this load balancing?

- A. A Standard Virtual Server + FTP profile
- B. A Forwarding Virtual Server
- C. A Performance Layer 4 Virtual Server + FTP profile
- D. A Message Routing Virtual Server

Answer: A

NEW QUESTION 244

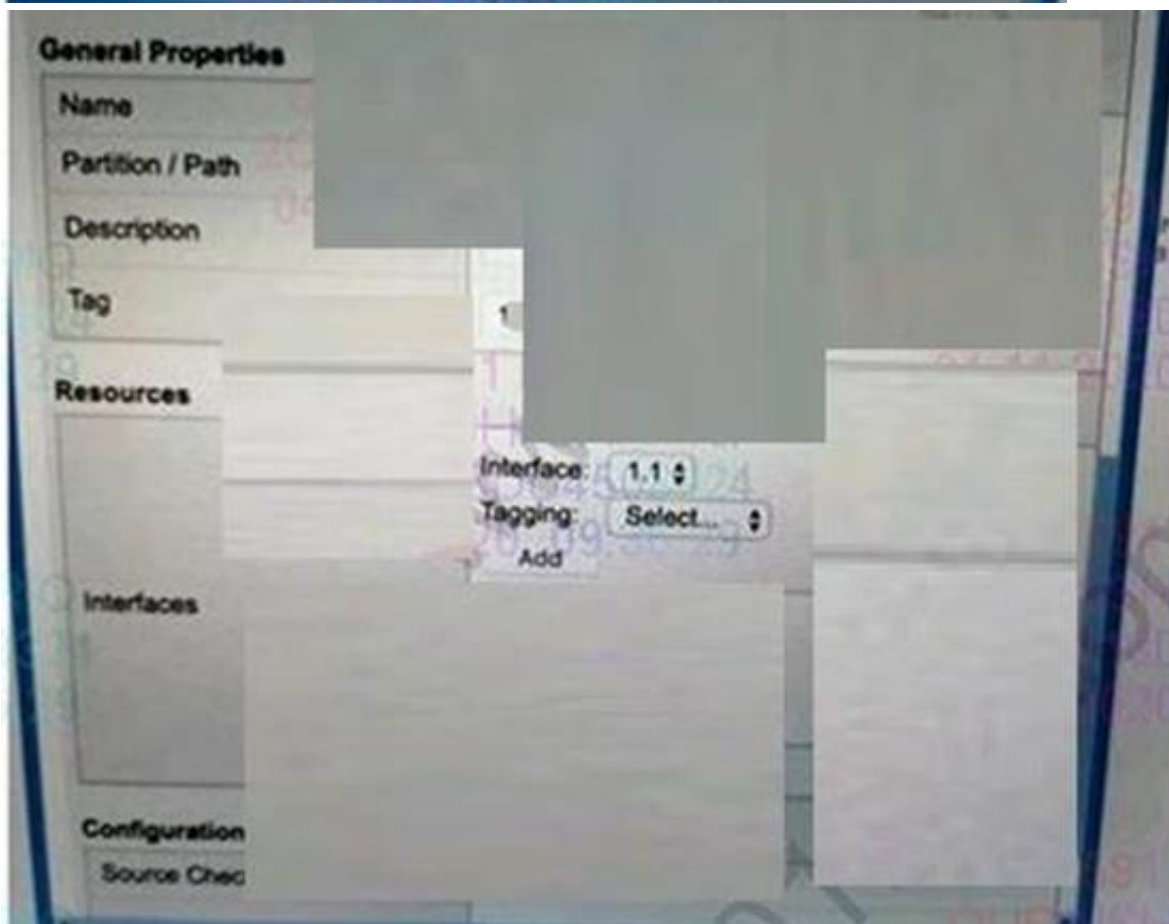
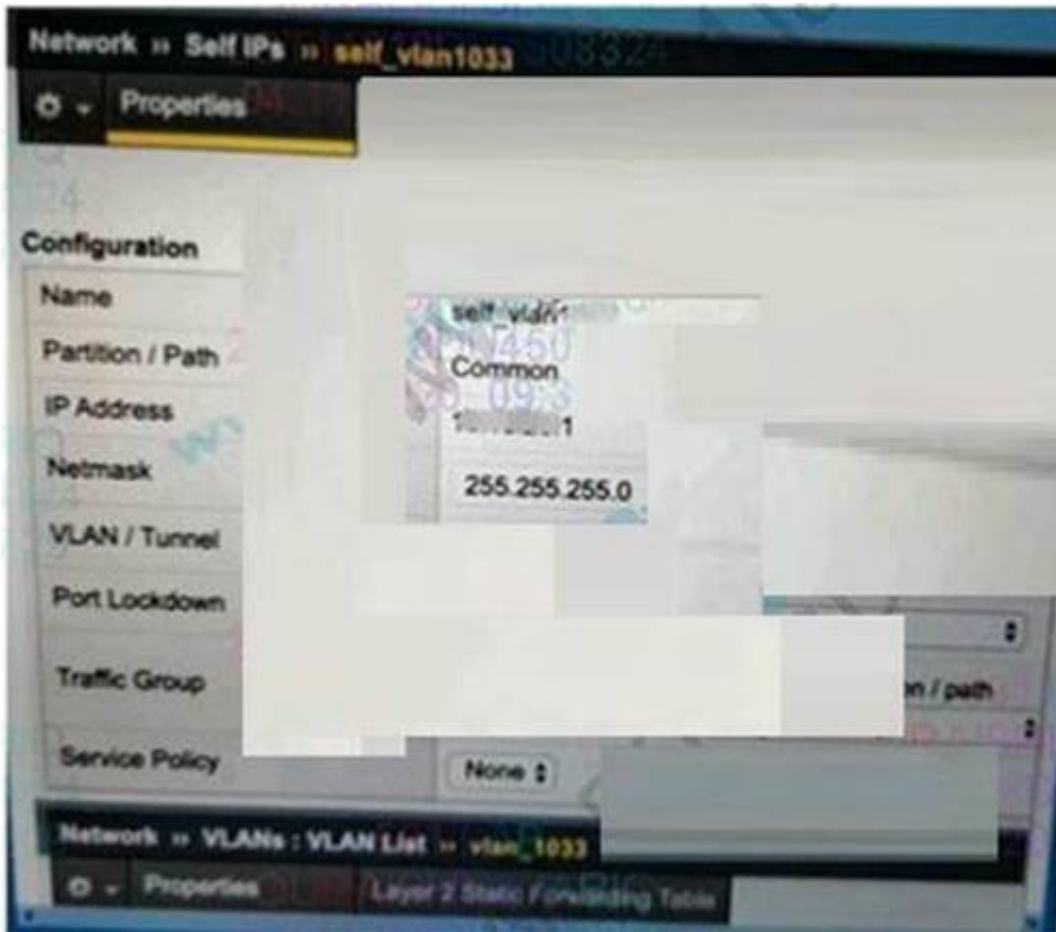
Which must be sent to the license server to generate a new license?

- A. the system's dossier
- B. the system's host name
- C. the system's base license
- D. the system's purchase order number

Answer: A

NEW QUESTION 246

Refer to the exhibit



The network team creates a new VLAN on the switches. The BIG-IP Administrator needs to create a configuration on the BIG-IP device. The BIG-IP Administrator creates a new VLAN and Self IP, but the servers on the new VLAN are NOT reachable from the BIG-IP device. Which action should the BIG-IP Administrators to resolve this issue?

- A. Set Port Lockdown of Set IP to Allow All
- B. Change Auto Last Hop to enabled
- C. Assign a physical interface to the new VLAN
- D. Create a Floating Set IP Address

Answer: C

NEW QUESTION 251

A BIG-IP Administrator needs to install a HotFix on a standalone BIG-IP device, which has HD1.1 as the Active Boot Location. The BIG-IP Administrator has already re-activated the license and created an UCS archive of the configuration. In which sequence should the BIG-IP Administrator perform the remaining steps?

- A. Install HotFix in HD 1.1, Reboot the BIG-IP device
- B. Install UCS Archive
- C. Install HotFix in HD 1.2, Install base Image in HD 1.2, Activate HD1.2
- D. Install base Image in HD1.2, Install HotFix in HD1.2, Activate HD 1.2
- E. Activate HD 1.2, Install base image in HD 1.2. Install HotFix in HD 1.2

Answer: C

NEW QUESTION 255

A site needs to terminate client HTTPS traffic at the BIG-IP and forward that traffic unencrypted. Which two are profile types that must be associated with such a virtual server? (Choose two.)

- A. TCP
- B. HTTP
- C. HTTPS
- D. ClientSSL
- E. ServerSSL

Answer: AD

NEW QUESTION 260

.....

Thank You for Trying Our Product

We offer two products:

1st - We have Practice Tests Software with Actual Exam Questions

2nd - Questions and Answers in PDF Format

201 Practice Exam Features:

- * 201 Questions and Answers Updated Frequently
- * 201 Practice Questions Verified by Expert Senior Certified Staff
- * 201 Most Realistic Questions that Guarantee you a Pass on Your FirstTry
- * 201 Practice Test Questions in Multiple Choice Formats and Updatesfor 1 Year

100% Actual & Verified — Instant Download, Please Click
[Order The 201 Practice Test Here](#)