



**HP**

## **Exam Questions HPE6-A72**

Aruba Certified Switching Associate Exam

## About ExamBible

### *Your Partner of IT Exam*

## Found in 1998

ExamBible is a company specialized on providing high quality IT exam practice study materials, especially Cisco CCNA, CCDA, CCNP, CCIE, Checkpoint CCSE, CompTIA A+, Network+ certification practice exams and so on. We guarantee that the candidates will not only pass any IT exam at the first attempt but also get profound understanding about the certificates they have got. There are so many alike companies in this industry, however, ExamBible has its unique advantages that other companies could not achieve.

## Our Advances

### \* 99.9% Uptime

All examinations will be up to date.

### \* 24/7 Quality Support

We will provide service round the clock.

### \* 100% Pass Rate

Our guarantee that you will pass the exam.

### \* Unique Gurantee

If you do not pass the exam at the first time, we will not only arrange FULL REFUND for you, but also provide you another exam of your claim, ABSOLUTELY FREE!

### NEW QUESTION 1

DRAG DROP

Match the switching term to the correct definition.

Term		Definition
Broadcast Domain		defines the group of devices that are on the same network segment that are capable of receiving and responding to frames destined to FF:FF:FF:FF:FF:FF
Collision Domain		
CSMA/CD		the FIB used by switches matching known-source mac-addresses to the layer one port they are learned on
Forwarding Table		
		the mechanism used by Compute NICs and Switchports operating in half-duplex to detect and recover from frame collisions
		the segment of a network connected by a shared medium, such as a hub, that is affected when two or more frames are sent at the same time

- A. Mastered  
B. Not Mastered

Answer: A

Explanation:

Term		Definition
Broadcast Domain	Broadcast Domain	defines the group of devices that are on the same network segment that are capable of receiving and responding to frames destined to FF:FF:FF:FF:FF:FF
Collision Domain		
CSMA/CD		
Forwarding Table	Forwarding Table	the FIB used by switches matching known-source mac-addresses to the layer one port they are learned on
	CSMA/CD	the mechanism used by Compute NICs and Switchports operating in half-duplex to detect and recover from frame collisions
	Collision Domain	the segment of a network connected by a shared medium, such as a hub, that is affected when two or more frames are sent at the same time

### NEW QUESTION 2

What is the correct description of a Multi- Layer Switch?

- A. a switch with Layer 3 routing capabilities but lacks any Layer 1 features as a consequence  
B. any switch that supports PoE, LLDP-MED and Flow Control  
C. has all the functionality of a Layer 2 switch and most of the functionality of a Layer 3 router  
D. multi-Layer refers specifically to using chassis switches with several line cards over stack port switches

Answer: C

### NEW QUESTION 3

What are two OSPF attributes within the hello messages that must match to successfully establish neighbor relationships? (Choose two.)

- A. Router ID  
B. Priority  
C. Hello and Dead intervals  
D. Area ID  
E. Process ID

Answer: CD

#### NEW QUESTION 4

Your customer has 349 users in a two-story building.  
 What are two benefits of a 2-Tier design? (Choose two.)

- A. Layer 2 and Layer 3 protocols run close to the endpoints to better implement ACL and QoS policy at the edge.
- B. Improved performance by offloading processing from the Access layer to the Core.
- C. Use of layer 2 switches at the access layer can process and route traffic from attached APs.
- D. Support for WAN/MPLS, Internet, and Data Center directly on the Collapsed core.
- E. Provides a more cost effective solution given that no additional switches are required for a third tier.

**Answer:** AE

#### NEW QUESTION 5

What command will save your configuration on an Aruba AOS-CX switch so that your changes automatically load on next reboot?

- A. copy running-config checkpoint startup-config
- B. copy startup-config running-config
- C. copy running-config initial-checkpoint
- D. copy running-config default

**Answer:** A

#### NEW QUESTION 6

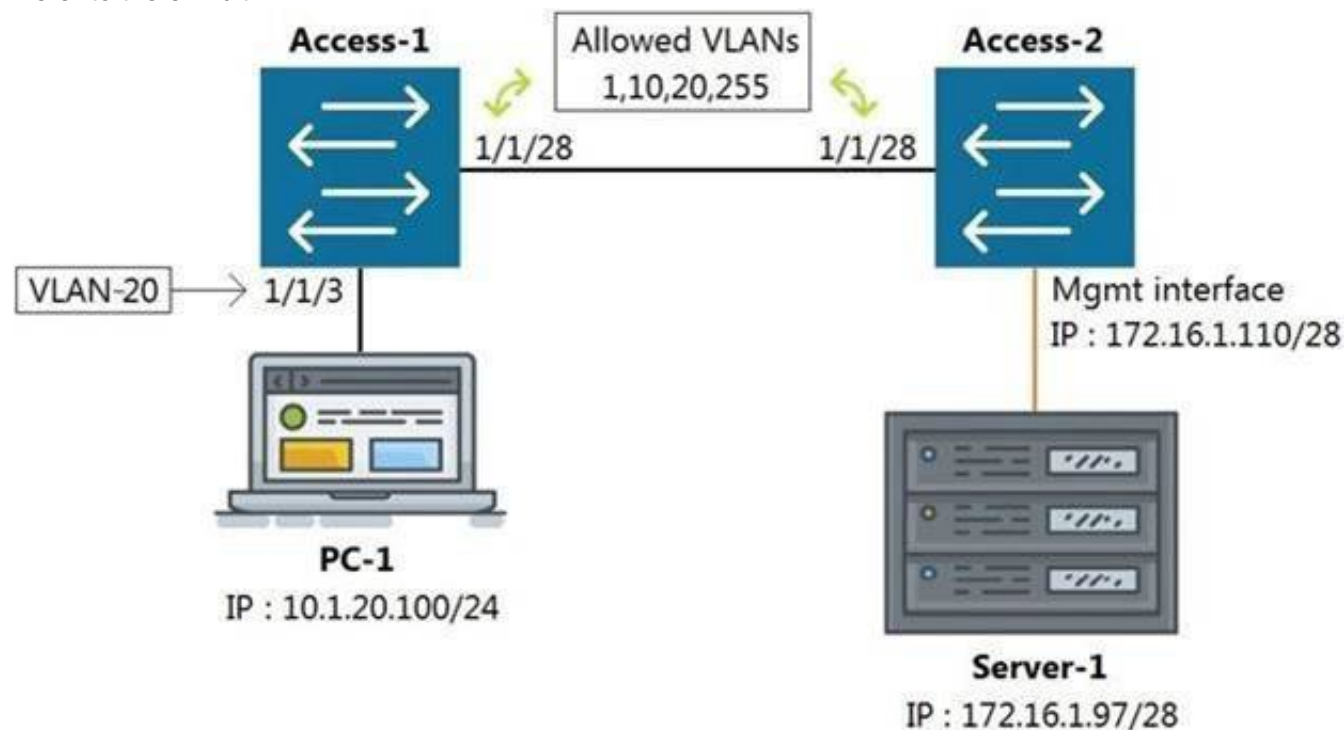
What connectivity commands are available on AOS-CX switches? (Choose two.)

- A. netstatus
- B. traceroute
- C. ping
- D. pathping
- E. tracet

**Answer:** BC

#### NEW QUESTION 7

Refer to the exhibit.



All switches are running Aruba OS-CX. While working in the terminal of Access-2, you are unable to reach Server-1 using SSH. What is the correct command to ping Server-1 from Access-2 to test reachability?

- A. Access-2# ping6 172.16.1.97 vrf mgmt
- B. Access-2# ping 172.16.1.97
- C. Access-2# ping 172.16.1.97 vrf default
- D. Access-2# ping 172.16.1.97 vrf mgmt

**Answer:** D

#### NEW QUESTION 8

Which statement is correct regarding powering an Aruba Access Point?

- A. PoE or PoE+ is only used with Ethernet that is carried over multi-mode fiber cabling.
- B. Using switchports for this reason is unnecessary, because Aruba Access Points typically use an AC to DC power adapter to draw power.
- C. PoE or PoE+ enabled switchports are rarely used given concerns about causing electrical interference, with the data also carried over Ethernet cabling.
- D. Most administrators use PoE or PoE+ enabled switchports to provide both Ethernet connectivity and power to the AP.

**Answer:** D

#### NEW QUESTION 9



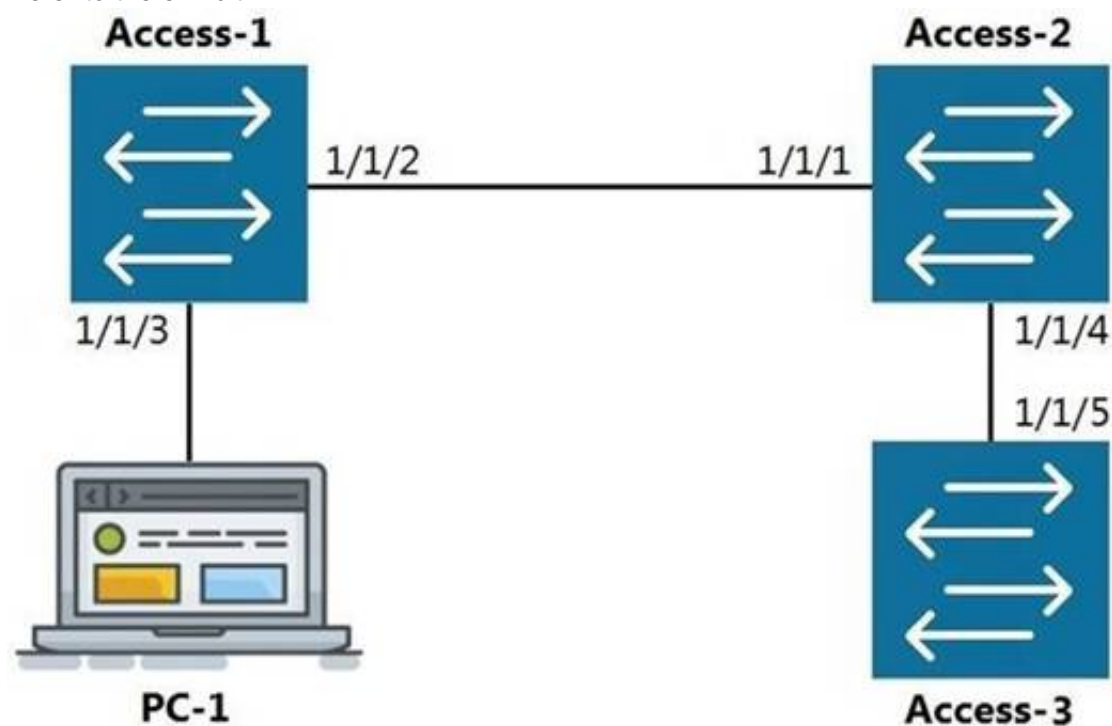
What is a benefit of choosing a 3-Tier design with routing at the Aggregation layer?

- A. Better Core router performance by offloading processing
- B. Shifting endpoint access to the Aggregation layer from the Access layer
- C. Using access control lists (ACLs) at the Core to improve performance
- D. Connecting WAN/MPLS and Data center access to the Aggregation layer

**Answer:** A

#### NEW QUESTION 10

Refer to the exhibit.



LLDP

The command show LLDP neighbor-info gets typed into Access-1. All switches are Aruba OS-CX switches.

What is the output of this command?

- A.
- | LOCAL-PORT | CHASSIS-ID        | PORT-ID | PORT-DESC | TTL | SYS-NAME |
|------------|-------------------|---------|-----------|-----|----------|
| 1/1/1      | 90:20:c2:bc:ed:00 | 1/1/2   | 1/1/2     | 120 | Access-2 |
| 1/1/5      | 90:20:c2:bc:ef:00 | 1/1/2   | 1/1/2     | 120 | Access-3 |
- B.
- | LOCAL-PORT | CHASSIS-ID        | PORT-ID | PORT-DESC | TTL | SYS-NAME |
|------------|-------------------|---------|-----------|-----|----------|
| 1/1/1      | 90:20:c2:bc:ed:00 | 1/1/2   | 1/1/2     | 120 | Access-2 |
- C.
- | LOCAL-PORT | CHASSIS-ID        | PORT-ID | PORT-DESC | TTL | SYS-NAME |
|------------|-------------------|---------|-----------|-----|----------|
| 1/1/2      | 90:20:c2:bc:ed:00 | 1/1/1   | 1/1/1     | 120 | Access-2 |
| 1/1/2      | 90:20:c2:bc:ef:00 | 1/1/5   | 1/1/5     | 120 | Access-3 |
- D.
- | LOCAL-PORT | CHASSIS-ID        | PORT-ID | PORT-DESC | TTL | SYS-NAME |
|------------|-------------------|---------|-----------|-----|----------|
| 1/1/2      | 90:20:c2:bc:ed:00 | 1/1/1   | 1/1/1     | 120 | Access-2 |

**Answer:** D

#### NEW QUESTION 10

Refer to the exhibit.



You are in the process of configuring VSF between Access-1 and Access-2. Access-1 has been configured as the VSF Master. What is a valid configuration for Access-2 to join the VSF stack?

- A. Access-2# configureAccess-2(config)# vsf member 1 Access-2(config)# vsf renumber-to 2 Access-2(vsf-member-1)# link 2 2/1/28 Access-2(vsf-member-1)# exitThis will save the VSF configuration and reboot the switc
- B. Do you want to continue (y/n)? y
- C. Access-2# configureAccess-2(config)# vsf member 2 Access-2(vsf-member-1)# link 2 1/1/28 Access-2(vsf-member-1)# exitThis will save the VSF configuration and reboot the switc
- D. Do you want to continue (y/n)? y
- E. Access-2# configureAccess-2(config)# vsf member 2 Access-2(vsf-member-1)# link 1 1/1/28 Access-2(vsf-member-1)# exitThis will save the VSF configuration and reboot the switch.Do you want to continue (y/n)? y
- F. Access-2# configureAccess-2(config)# vsf member 1 Access-2(vsf-member-1)# link 1 1/1/28 Access-2(vsf-member-1)# exitAccess-2(config)# vsf renumber-to 2This will save the VSF configuration and reboot the switc
- G. Do you want to continue (y/n)? y

**Answer: C**

### NEW QUESTION 13

DRAG DROP

Match each description to the correct management tool for Aruba AOS-CX.

Select and Place:

Management Tools	Answer Area	
Management Tool	Description	
NetEdit	can run as an OVA	
Aruba CX Mobile App	requires AOS-CX switches to support HTTPS, SSH, and REST access	
	connects to switches via Bluetooth or Wi-Fi	
	includes a feature for stacking automation	
	supports SNMPv2c to discover third-party devices	

- A. Mastered
- B. Not Mastered

**Answer: A**

Explanation:

Management Tools	Answer Area	
Management Tool	Description	
NetEdit	can run as an OVA	
NetEdit	requires AOS-CX switches to support HTTPS, SSH, and REST access	
Aruba CX Mobile App	connects to switches via Bluetooth or Wi-Fi	
Aruba CX Mobile App	includes a feature for stacking automation	
NetEdit	supports SNMPv2c to discover third-party devices	

### NEW QUESTION 16

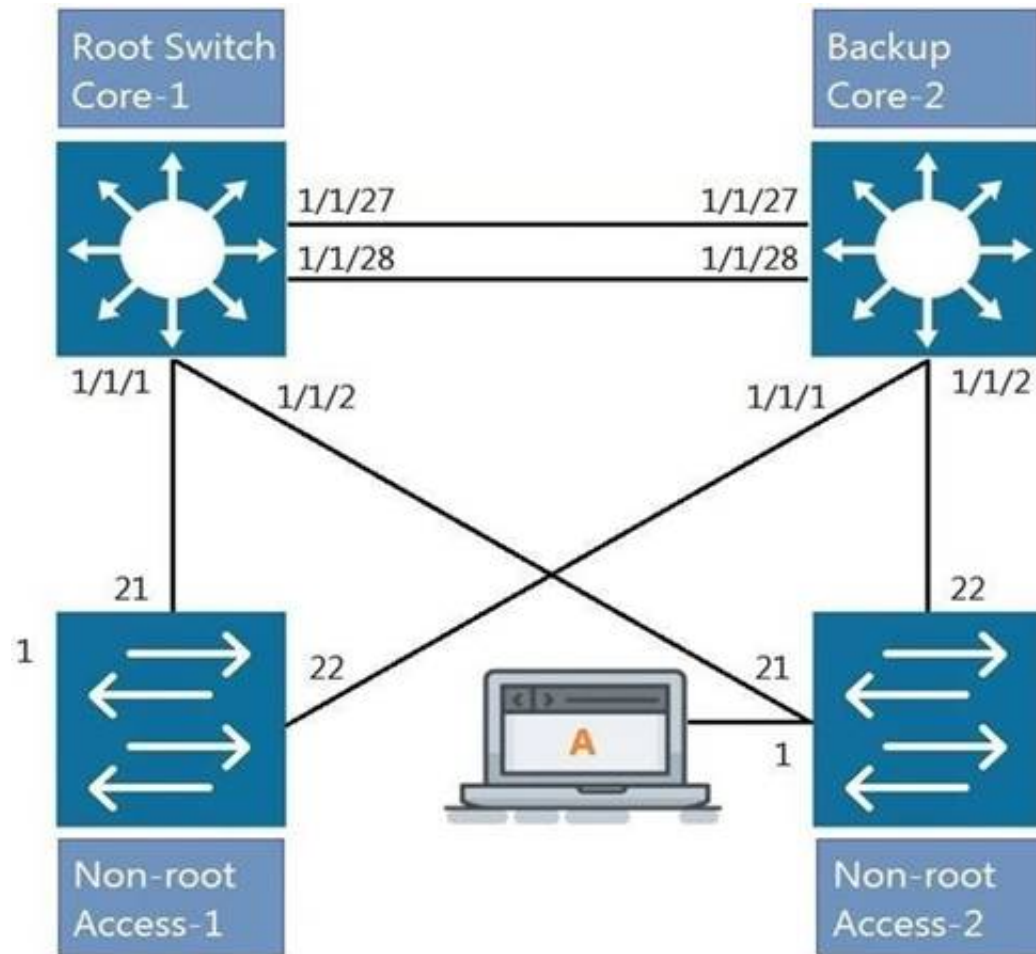
Which two statements accurately describe the features of NetEdit? (Choose two.)

- A. NetEdit can be used to configure and validate any third-party device that supports SSH and REST access.
- B. NetEdit includes trial licensing for up to 10 nodes.
- C. NetEdit can perform configuration and compliance validation.
- D. NetEdit supports viewing and editing multiple devices using a single deployment plan.
- E. NetEdit can run on a mobile device using Android or Apple IOS.

**Answer: CD**

### NEW QUESTION 20

Refer to the exhibit.



All four switches in the diagram have been configured with the region name "Aruba1".  
 What two other MSTP configurations must match for switches within the same MST region? (Choose two.)

- A. MST region type
- B. MST Bridge ID
- C. MST version number
- D. MST revision number
- E. MST VLAN to instance mapping

**Answer:** DE

#### NEW QUESTION 22

Which port or ports should be allowed through a firewall so that an AOS-CX switch can act as an SNMP Agent?

- A. UDP 1812 and UDP 1813
- B. UDP 161
- C. TCP 443
- D. UDP 162

**Answer:** B

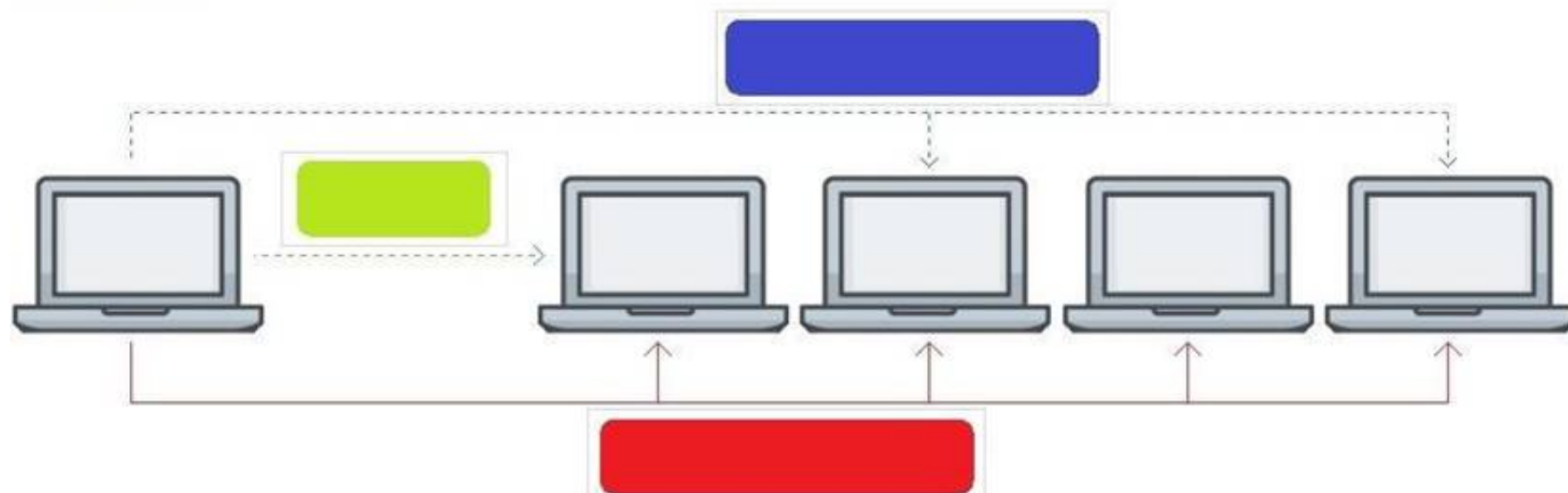
#### NEW QUESTION 24

HOTSPOT

Click on the colored box that corresponds with the line that best represents Unicast traffic flow.

Hot Area:

**Answer Area**



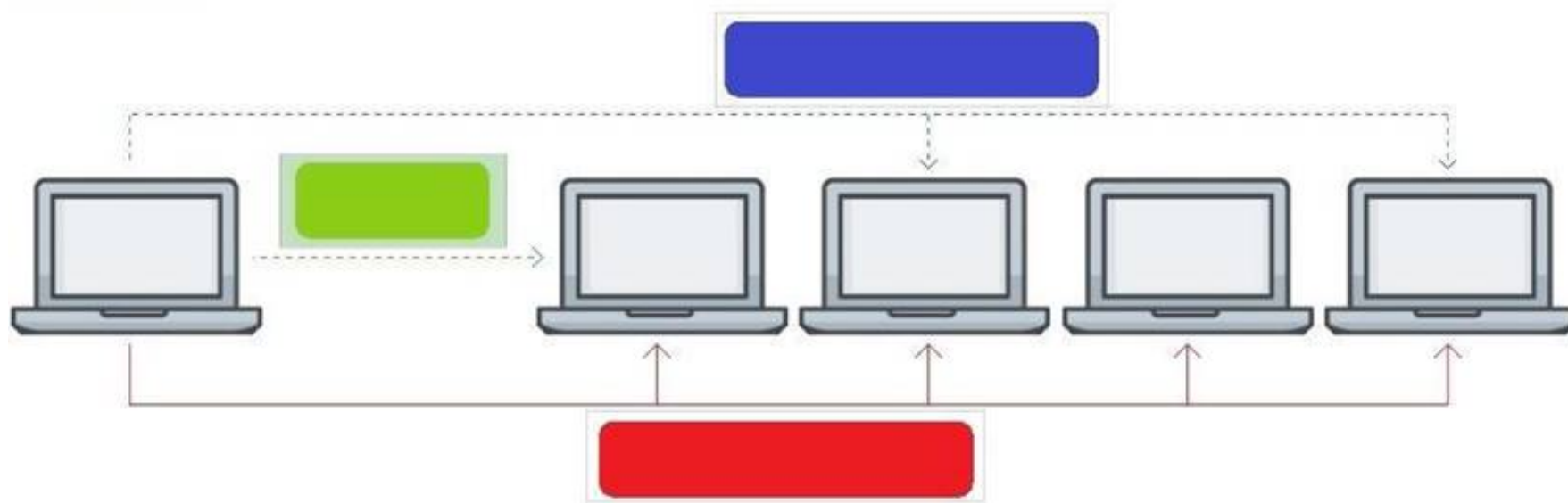
- A. Mastered
- B. Not Mastered

**Answer:** A

**Explanation:**



## Answer Area



### NEW QUESTION 26

You have completed a successful VSF stack between two switches.  
 Without manually assigning a backup switch, what is the expected output when issuing a show vsf command?

- A. T1-6300-A# show vsf  
 <omitted>  

Mbr	Mac Address	type	Status ID
1	88:3a:30:a3:e5:40	JL660A	Commander
2	88:3a:30:a6:d9:80	JL660A	Secondary
- B. T1-6300-A# show vsf  
 <omitted>  

Mbr	Mac Address	type	Status ID
1	88:3a:30:a3:e5:40	JL660A	Primary
2	88:3a:30:a6:d9:80	JL660A	Secondary
- C. T1-6300-A# show vsf  
 <omitted>  

Mbr	Mac Address	type	Status ID
1	88:3a:30:a3:e5:40	JL660A	Master
2	88:3a:30:a6:d9:80	JL660A	Member
- D. T1-6300-A# show vsf  
 <omitted>  

Mbr	Mac Address	type	Status ID
1	88:3a:30:a3:e5:40	JL660A	Master
2	88:3a:30:a6:d9:80	JL660A	Standby

Answer: D

### NEW QUESTION 31

Refer to the exhibit.



```
SW1# show vlan
-----
VLAN      Name                Status    Reason    Type         Interfaces
-----
1         DEFAULT_VLAN_1     up        ok        default      <output omitted>
10        Engineering        up        ok        static       1/1/1-1/1/7
20        Guest              up        ok        static       1/1/11-1/1/14
```

The above command was applied to an Aruba AOS-CX 6300M 24-port switch with 4-port SFP56 uplinks. All ports are set as access switchports. Which ports carry VLAN 1 traffic?

- A. 1/1/8, 1/1/10, 1/1/5-1/1/24
- B. 1/1/1-1/1/28
- C. 1/1/1-1/1/24
- D. 1/1/8-1/1/10, 1/1/5-1/1/28

**Answer:** D

#### NEW QUESTION 36

```
Core(config)# user admin password
Core(config)# interface mgmt
Core(config-if-mgmt)# ip static 10.254.16.89/22
Core(config-if-mgmt)# default-gateway 10.254.19.129
Core(config)# ssh server vrf mgmt
Core(config)# https-server vrf mgmt
```

You are tasked with configuring the Core switch to be managed by NetEdit. Currently, the Core switch is at factory-default settings. Which two steps are missing? (Choose two.)

- A. Core(config)# https-server rest access-mode read-write
- B. Core(config-if-mgmt)# no shutdown
- C. Core(config-if-mgmt)# no tftp-server
- D. Core(config-if-mgmt)# enable
- E. Core(config)# https-server rest access-mode read-only

**Answer:** AB

#### NEW QUESTION 37

Which two options are correct regarding the IEEE 802.11ax standard? (Choose two.)

- A. allows transmissions of up to 4.8Gbps
- B. is an emerging satellite connection standard to allow wireless access anywhere in the world
- C. operates only in the 5GHz similar to 802.11ac
- D. operates in both the 2.4GHz and 5GHz radios bands
- E. is the first WLAN standard to no longer use electromagnetic signals to transmit data

**Answer:** AD

#### NEW QUESTION 40

.....

## Relate Links

**100% Pass Your HPE6-A72 Exam with ExamBible Prep Materials**

<https://www.exambible.com/HPE6-A72-exam/>

## Contact us

We are proud of our high-quality customer service, which serves you around the clock 24/7.

Viste - <https://www.exambible.com/>