



Microsoft

Exam Questions PL-200

Microsoft Power Platform Functional Consultant

About ExamBible

[Your Partner of IT Exam](#)

Found in 1998

ExamBible is a company specialized on providing high quality IT exam practice study materials, especially Cisco CCNA, CCDA, CCNP, CCIE, Checkpoint CCSE, CompTIA A+, Network+ certification practice exams and so on. We guarantee that the candidates will not only pass any IT exam at the first attempt but also get profound understanding about the certificates they have got. There are so many alike companies in this industry, however, ExamBible has its unique advantages that other companies could not achieve.

Our Advances

* 99.9% Uptime

All examinations will be up to date.

* 24/7 Quality Support

We will provide service round the clock.

* 100% Pass Rate

Our guarantee that you will pass the exam.

* Unique Gurantee

If you do not pass the exam at the first time, we will not only arrange FULL REFUND for you, but also provide you another exam of your claim, ABSOLUTELY FREE!

NEW QUESTION 1

- (Exam Topic 1)

A guest asks about the start time of a specific scheduled event and wants to know what the snow conditions will be like during their stay.

You need to determine how to design the chat solution to answer those questions. What should you do? To answer, select the appropriate options in the answer area. NOTE: Each correct selection is worth one point.

Scenario	Action
Identify and reference the company event a guest mentions.	<div><div></div><div>Load the response into a variable Use smart matching to load an entity into a topic Load the extracted topic into a variable</div></div>
Identify attributes for snow conditions.	<div><div></div><div>Create a custom entity Create a new topic Create a new variable Create an escalation</div></div>

- A. Mastered
B. Not Mastered

Answer: A

Explanation:

Graphical user interface Description automatically generated

Box 1: Load the extracted topic into a variable

Power Virtual Agents uses entities to understand and identify a specific type of information from a user's responses. When saving the identified information to a variable, a variable type will be associated with it. The variable type is analogous with the entity.

In Power Virtual Agents, a topic defines a how a bot conversation plays out.

A topic has trigger phrases – these are phrases, keywords, or questions that a user is likely to type that is related to a specific issue – and conversation nodes – these are what you use to define how a bot should respond and what it should do.

Box 2: Create a custom entity

The prebuilt entities cover commonly used information types, but on some occasions, such as when building a bot that serves a specific purpose, you'll need to teach the bot's language understanding model some domain-specific knowledge.

Reference:

<https://docs.microsoft.com/en-us/power-virtual-agents/advanced-entities-slot-filling>

NEW QUESTION 2

- (Exam Topic 1)

You need to add controls to the check-in solution for the health and wellness questions. Which form control should you use?

- A. Drop down
B. Check box
C. Text input

Answer: A

NEW QUESTION 3

- (Exam Topic 1)

You need to create the FAQ solution content What should you do first?

- A. AI Builder
B. Suggest topics
C. Automate
D. Trigger phrases

Answer: B

Explanation:

You need to make sure there are three main steps need to do while doing import FAQ and add the topic to your bot application.

➤ Import Suggested Topics from FAQ webpage.

➤ Add a topic.

➤ Enable the topics Reference:

<https://social.technet.microsoft.com/wiki/contents/articles/53820.power-virtual-agents-faq-chatbot.aspx>

NEW QUESTION 4

- (Exam Topic 1)

You need to embed the check-in solution into the communication solution. To answer, select the appropriate options in the answer area.

NOTE: Each correct selection is worth one point.

What must you use to embed the check-in solution?

	▼
Visual Studio	
Power Apps Web Studio	
AI Builder	
Common Data Service	

Where must the check-in solution be available within the communication solution?

	▼
chat section of the solution	
Microsoft 365 Apps selection grid	
in an embedded webpage	
in a tab	

- A. Mastered
B. Not Mastered

Answer: A

Explanation:

Graphical user interface, application, Word Description automatically generated

Box 1: Power Apps Web Studio

Scenario: The check-in solution must continue to function if there are internet issues. If the self-service kiosks are not available, staff must be able to use the check-in solution from within their communication solution.

PowerApps Studio is a browser application used to edit your apps. PowerApps Studio includes a

drag-and-drop canvas in the center of the screen and a screen or object list pane on the left. Properties, Rules, and Advanced Properties for selected screens or controls are displayed in the right pane.

Box 2: in a tab

You can customize the Teams experience by adding Power Apps canvas apps to your channels in Teams using the PowerApps tab.

NEW QUESTION 5

- (Exam Topic 2)

You need to configure a Power Automate flow to send the email with the results to the client. What should you use? To answer, select the appropriate options in the answer area.

NOTE: Each correct selection is worth one point.

Requirement

Control

Process qualification records for a service request.

Evaluate a qualification.

	▼
Switch	
Condition	
Apply to Each	

	▼
Do until	
Condition	
Apply to Each	

- A. Mastered
B. Not Mastered

Answer: A

Explanation:

Box 1: Apply to each

You can use the Apply to each action to process a list of items periodically.

Box 2: Do until

The Do Until control in Power Automate is a loop that repeatedly forces an action until a certain condition becomes true.

Reference: <https://docs.microsoft.com/en-us/power-automate/apply-to-each> <https://blog.enterprisedna.co/do-until-loop-control-in-power-automate/>

NEW QUESTION 6

- (Exam Topic 2)

You need to configure a Power Automate flow to send the email with the results to the client. What should you use? To answer, select the appropriate options in the answer area.

NOTE: Each correct selection is worth one point.

Trigger settings

	▼
Set Table name to Qualification and Column filter to statecode.	
Set Table name to Qualification and Column filter to statuscode.	
Set Table name to Service Requests and Column filter to statuscode.	

Logic to complete service requests

	▼
Complete if current record is in Complete status.	
Complete if current record is in Pending Verification status.	
Loop through related qualification records and complete if all are in Complete status.	

- A. Mastered
B. Not Mastered

Answer: A

Explanation:

Box 1: Set Table name to Qualification and Column filter to statuscode.

Box 2: Loop through related qualification records and complete if all are in Complete status. The new process for completing a service request must automate the following:

Set the Service Request record status to Complete when work on all Qualification records is finished.

Send an email to the client with the results when the service request is completed. The email must list each qualification as either Valid or Not Valid, depending on the verification.

NEW QUESTION 7

- (Exam Topic 2)

You need to address the executive's concerns regarding unnecessary data access.

Which security changes should you make? To answer, select the appropriate options in the answer area.

NOTE: Each correct selection is worth one point.

Answer Area

Concern – Unnecessary user access to client data during verification

Security Measure –

	▼
Assign records to the user doing the verification and change table security to basic.	
Assign records to a service account and share the record with the team member doing the verification.	
Assign records to a service account and add the team member doing the verification by using an access team.	

Concern – Unnecessary user access to client data after the request is completed

Security Measure –

	▼
Assign records to the QV team when the service request is completed.	
Assign records to a service account when the service request is completed.	
Assign records to the team member doing the verification when the service request is completed.	

- A. Mastered
B. Not Mastered

Answer: A

Explanation:

Box 1: Assign records to a service account and add the team member doing the verification by using an access team.

When to use access teams

* The teams are dynamically formed and dissolved. This typically happens if the clear criteria for defining the teams, such as established territory, product, or volume aren't provided.

* The team members require different access rights on the records. You can share a record with several access teams, each team providing different access rights on the record. For example, one team is granted the Read access right on the account and another team, the Read, Write and Share access rights on the same account.

* A unique set of users requires access to a single record without having an ownership of the record. Box 2: Assign records to the QV team when the service request is completed.

Issues: More employees than are required can access individual client information and continue to have access after a service request is completed.

Management has decided to create a new qualification verification (QV) role to help ensure that clients get the most accurate results. This role examines completed work to ensure that nothing is missed.

• When users go on vacation, all their outstanding Service Request records are assigned to a substitute employee. The substitute employees are unable to see all

the qualifications related to their service requests.

Reference:

<https://docs.microsoft.com/en-us/power-apps/developer/data-platform/use-access-teams-owner-teams-collaborat>

NEW QUESTION 8

- (Exam Topic 2)

You need to be able to move a Power Automate desktop flow used in the verification process to the testing environment.

What should you do?

- A. Share a copy of the desktop flow with a member of internal IT.
- B. Use the Export option in the flow to get the flow identifier and provide it to internal IT.
- C. Send a copy of the desktop flow to a member of internal IT.
- D. Create the desktop flow in a solution and provide it to internal IT.

Answer: D

Explanation:

Internal IT reports that the solution import to the test environment failed because of missing dependencies related to the flow for completing service requests.

Flows with PowerApps steps

Flows that were created via Power Automate in the PowerApps menu or flows that have PowerApps steps added have a different issue than other Power Automate flows. As of the writing of this blog these flows are not able to be imported into another environment. This means that if you create flows with Power Apps steps within them you will need to recreate them in your destination environment.

Reference: <https://www.spyglassmtg.com/blog/power-platform-solution-export-and-import-issues>

NEW QUESTION 9

- (Exam Topic 2)

You need to resolve the issue reported by substitute employees after they are assigned service requests. How should you configure the system? To answer, select the appropriate options in the answer area. NOTE: Each correct selection is worth one point.

Aspect	Configuration
Relationship	<div><div></div><div>Service Request 1:N Qualification</div><div>Service Request N:N Qualification</div><div>Service Request N:1 Qualification</div></div>
Cascading rule	<div><div></div><div>Restrict</div><div>Cascade All</div><div>Cascade None</div></div>

- A. Mastered
- B. Not Mastered

Answer: A

Explanation:

Box 1: Service Request 1:N Qualification

When users go on vacation, all their outstanding Service Request records are assigned to a substitute employee. The substitute employees are unable to see all the qualifications related to their service requests.

Box 2: Cascade All

Cascade All - Perform the action on all referencing table records associated with the referenced table record. Reference:

<https://docs.microsoft.com/en-us/power-apps/developer/data-platform/configure-entity-relationship-cascading-b>

NEW QUESTION 10

- (Exam Topic 3)

A company's sales staff wants a simplified way to manage their opportunities in Dynamics 365 Sales without adding custom code.

You need to provide a solution for each requirement.

Which solutions should you provide? To answer, select the appropriate options in the answer area.

NOTE: Each correct selection is worth one point.

Requirement	Solution
Drag and drop opportunities to change the stage.	<div><div></div><div>Add a Kanban control.</div><div>Add a Timeline control.</div><div>Add an Editable Grid control.</div><div>Add a Calendar control.</div></div>
Show each salesperson their opportunities in Calendar and Kanban view.	<div><div></div><div>Add both controls to a custom view.</div><div>Add both controls to the My Opportunities view.</div><div>Add one control to All Opportunities and a custom view.</div><div>Add one control to My Opportunities and a custom view.</div></div>
Show each salesperson the number of open opportunities by stage in a standard view.	<div><div></div><div>Use the List view.</div><div>Use the Timeline control.</div><div>Use the Kanban control.</div><div>Use the chart pane on the view.</div></div>

- A. Mastered
B. Not Mastered

Answer: A

Explanation:

Graphical user interface, text, application, email Description automatically generated

Box 1: Add a Kanban control.

The Kanban view allows your sales team to move opportunities from one stage to another by simply dragging them.

Box 2: Add both controls to the My Opportunities view.

➤ Kanban views help salespeople to manage their opportunities and activities effectively. Add the Kanban control to the Opportunity and Activity entity so salespeople can use the Kanban views. The Kanban control works only on the Opportunity and Activity entities.

➤ If you use unified interface, you can display any record in a calendar view via the calendar control.

- Go to Settings->Customization->Customize the System
- Open the configuration for the entity that you want to use the calendar control (Opportunities in our example)
- Click the View tab
- Click "Add Control" and select the calendar control.
- Click the dot for every interface from which you want the calendar control to be available.

Box 3: Use a List view

opportunities in Dynamics 365 Sales Reference:

<https://docs.microsoft.com/en-us/dynamics365-release-plan/2020wave1/dynamics365-sales/work-opportunities-> <https://crmtipoftheday.com/1206/view-any-dynamics-365-record-on-a-calendar/>

<https://fivep.com.au/how-to-get-visibility-and-report-on-an-opportunities-active-current-sales-stage-without-cod>

NEW QUESTION 10

- (Exam Topic 3)

You are a Dynamics 365 administrator for a veterinarian clinic.

On the client appointment form, there is a dropdown field for clients to select their type of pet. If a client selects the option Other, the veterinarian wants a text field to appear so that additional details can be added.

You need to create a dynamically visible field. What should you configure?

- A. field visibility on the form
B. business process flow
C. workflow
D. business rule

Answer: D

Explanation:

References:

<https://www.sherweb.com/blog/dynamics-365/configuring-business-rules-within-microsoft-dynamics-365-crm/>

NEW QUESTION 12

- (Exam Topic 3)

A company uses three apps to complete several business processes.

You need to identify solutions to help the company perform regression testing when the apps are updated. Which two tools should you use? Each correct answer presents part of the solution.

NOTE: Each correct selection is worth one point.

- A. Power Automate automated flow
B. Windows recorder (V1)
C. Power Automate desktop flow
D. Windows Steps Recorder

Answer: BD

NEW QUESTION 15

- (Exam Topic 3)

You create a Power Virtual Agents chatbot to reduce the number of incoming support calls that require a live person. The chatbot does not direct users to the correct information. You determine that this is because the chatbot is not able to identify which product a user is referring to in a conversation. You need to present a list of products so that users can select the correct product. What should you create?

- A. Table
- B. Variable
- C. Slot filling
- D. Entity

Answer: C

Explanation:

Slot filling is a natural language understanding concept that means saving an extracted entity to an object. However, in Power Virtual Agents, slot filling means placing the extracted entity value into a variable.

Reference: <https://docs.microsoft.com/en-us/power-virtual-agents/advanced-entities-slot-filling>

NEW QUESTION 17

- (Exam Topic 3)

You need to recommend a role for users to perform several required tasks. The solution must use the principle of least privilege. Which roles should you recommend? To answer, drag the appropriate roles to the correct functions. Each role may be used once, more than once, or not at all. You may need to drag the split bar between panes or scroll to view content. NOTE: Each correct selection is worth one point.

Roles	Function	Role
Office 365 global administrator	Create new users.	Role
Office 365 service administrator	Assign roles to users.	Role
Dynamics 365 service administrator	Perform backups for an instance.	Role
Dynamics 365 system administrator		

- A. Mastered
- B. Not Mastered

Answer: A

Explanation:

Graphical user interface, text, application Description automatically generated

Box 1: Office 365 Global Administrator

You may think that the Dynamics 365 system administrator would have power to do all the actions needed to manage Dynamics 365, but this is not the case. What's different in Microsoft cloud deployments is that licenses and user accounts are managed in Office 365 by an Office 365 Global Administrator. This role is analogous to a network administrator for an on premises deployment. The Global Administrator is the only role to create new user accounts and assign subscription licenses for Dynamics 365 (and other Office 365 apps such as Skype, Power BI and SharePoint).

Box 2: Dynamics 365 system administrator

The Dynamics 365 system administrator may assign roles and permissions to the Dynamics 365 user within an instance of Dynamics 365. The Dynamics 365 system administrator also controls all the settings in Dynamics 365.

Box 3: Dynamics 365 admin

The Dynamics 365 admin can perform backups and restores. Reference:

<https://docs.microsoft.com/en-us/power-platform/admin/use-service-admin-role-manage-tenant>

<https://community.dynamics.com/crm/b/govandthecity/posts/understanding-dynamics-365-and-office-365-admi>

NEW QUESTION 22

- (Exam Topic 3)

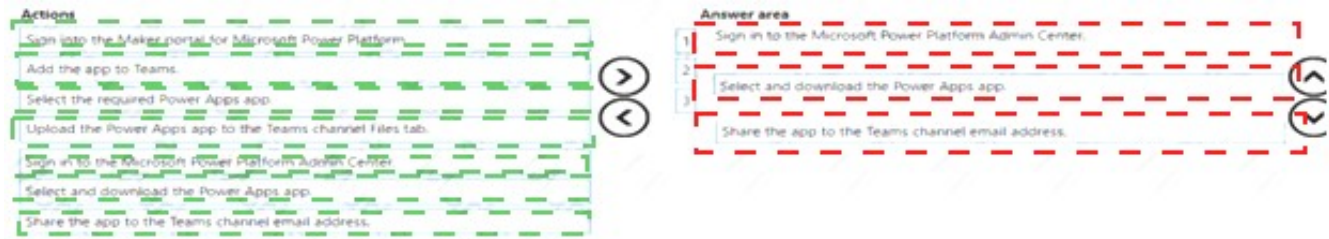
A company creates a canvas app. The company plans to make the app available in Microsoft Teams. Only employees will be allowed to use the app. You need to add the app to Teams. Which three actions should you perform in sequence? To answer, move the appropriate actions from the list of actions to the answer area and arrange them in the correct order.

Actions	Answer area
Sign into the Maker portal for Microsoft Power Platform.	1
Add the app to Teams.	2
Select the required Power Apps app.	3
Upload the Power Apps app to the Teams channel Files tab.	
Sign in to the Microsoft Power Platform Admin Center.	
Select and download the Power Apps app.	
Share the app to the Teams channel email address.	

- A. Mastered
- B. Not Mastered

Answer: A

Explanation:



NEW QUESTION 25

- (Exam Topic 3)

You are modifying a model-driven app. You set up a customer table in Microsoft Power Platform to retrieve user data. You set up a form with the following columns for users to enter their data. The form includes the following columns:

Column	Data type
Country/region	Choices (multi-select)
Passport ownership	Choice (yes /no)
Passport expiration date	Text

The form must do the following:

- The Country/region column must automatically populate with US when English is chosen as a language. If the user selects Other for this column, the column must remain blank so that user can enter a value.
- The Passport expiration date column must appear only if the user selects Yes in the Passport ownership column.

You need to configure the app with the least amount of effort.

What should you configure? To answer, drag the appropriate solution component to the correct requirements. Each solution component may be used once, more than once, or not at all. You may need to drag the split bar between panes or scroll to view content.

NOTE: Each correct selection is worth one point.



- A. Mastered
- B. Not Mastered

Answer: A

Explanation:

Graphical user interface Description automatically generated with low confidence

NEW QUESTION 26

- (Exam Topic 3)

Note: This question is part of a series of questions that present the same scenario. Each question in the series contains a unique solution that might meet the stated goals. Some question sets might have more than one correct solution, while others might not have a correct solution.

After you answer a question in this section, you will NOT be able to return to it. As a result, these questions will not appear in the review screen.

You are creating Power Virtual Agents chatbot that captures demographic information about customers. The chatbot must determine the group a customer belongs to based on their age. The age groups are:

- 0 - 17
- 18 - 25
- 26 - 35
- 36 - 55
- 55 - 100

You need to configure the chatbot to ask a question that can be used to determine the correct age group. Solution: Create a custom Age group entity and synonyms for each individual age in the corresponding item.

Use Age group for Identify in the question.

Does this meet the goal?

- A. Yes
- B. No

Answer: A

NEW QUESTION 27

- (Exam Topic 3)

You are designing the organization structure for a company that has 5,000 users.

You need to configure security roles for the company while minimizing administrative effort. What should you do? To answer, select the appropriate options in the answer area.

NOTE: Each correct selection is worth one point.

Requirement	Action
Apply a security role to everyone in a business unit.	<div><div></div><div>Assign the security role to the default business unit team.</div><div>Assign the security role individually to each user in the business unit.</div><div>Create a new team, add the business unit users, and then assign the security role to the team.</div></div>
Ensure an individual can see records in their current business unit and a child business unit.	<div><div></div><div>Grant the user a security role from the child business unit.</div><div>Grant the user the Parent: Child Business Units security permission.</div><div>Grant the user a security role from the root business unit.</div></div>

- A. Mastered
B. Not Mastered

Answer: A

Explanation:

Box 1: Create a new team, and the business unit users, and the assign the security role to the team. Change the business unit for a team Important

By changing the business unit for a team, you can remove all security role assignments for the team. At least one security role must be assigned to the team in the new business unit.

- > Select an environment and go to Settings > Users + permissions > Teams.
- > Select the checkbox for a team name.
- > Screenshot selecting a team.
- > On the menu bar, select Change Business Unit.
- > In the Change Business Unit dialog box, select a business unit. Enable Move records to new business unit to move to a new business unit. Select OK.

Box 2: Grant the user a security role from the child business unit.

Reference: <https://docs.microsoft.com/en-us/power-platform/admin/create-edit-business-units> <https://docs.microsoft.com/en-us/power-platform/admin/security-roles-privileges>

NEW QUESTION 29

- (Exam Topic 3)

A company uses a model-driven app. The app uses a Power Virtual Agents chatbot.

The company has two locations in different countries/regions with separate environments for each location. Each location has a development environment, a testing environment, and a production environment. The company uses the Application Lifecycle Management (ALM) process for the environments.

You need to create the different Power Virtual Agents bot environments. How many Power Virtual Agents bot environments are required?

- A. 1
B. 2
C. 3
D. 6

Answer: D

NEW QUESTION 34

- (Exam Topic 3)

A company uses Microsoft Teams. You plan to create a Power Apps app for Microsoft Teams. You need to determine the environment that will used by the app. Which environment will the app use?

- A. An existing Dataverse environment that you select.
B. An existing Dataverse for Teams environment that you select.
C. A Dataverse environment that is automatically created for the team.
D. A Dataverse for Teams environment that is automatically created for the team.

Answer: D

Explanation:

The Dataverse for Teams environment is automatically created for the selected team when you create an app or bot in Microsoft Teams for the first time or install a Power Apps app from the app catalog for the first time. The Dataverse for Teams environment is used to store, manage, and share team-specific data, apps, and flows. Each team can have one environment, and all data, apps, bots, and flows created with the Power Apps app inside a team are available from that team's Dataverse for Teams database.

Reference:

<https://docs.microsoft.com/en-us/power-platform/admin/about-teams-environment>

NEW QUESTION 36

- (Exam Topic 3)

You are a Dynamics 365 Sales administrator for a software company. The sales team wants to attach a large number of supporting documents to customer records, but management does not want to incur the cost of additional storage.

The company does not have any Office 365 application integrations enabled. You need to recommend a storage solution that keeps storage costs low. Solution:

Enable Outlook integration

Does the solution meet the goal?

- A. Yes
B. No

Answer: B

Explanation:

Instead enable server-based SharePoint integration. Reference:
<https://docs.microsoft.com/en-us/power-platform/admin/set-up-dynamics-365-online-to-use-sharepoint-online>

NEW QUESTION 37

- (Exam Topic 3)

You are a Dynamics 365 Customer Service help desk administrator.

Cases entered in forms require different types of data to be stored in different types of fields. You need to create forms for each of the following case types:

Case type	Requirement
Case type A	A new case form that includes a timeline
Case type B	A new case form that includes a business process flow
Case type C	A new case form that can display case data on an interactive dashboard
Case type D	A new mobile-friendly case form that requires minimal fields for record creation
Case type E	A new mobile-friendly case form that displays the subject, case title, and status fields from a parent case

Which form types should you create? To answer, drag the appropriate form types to the meet the data entry requirements. Each source may be used once, more than once, or not at all. You may need to drag the split bar between panes or scroll to view content.

NOTE: Each correct selection is worth one point.

Form types

quick create

main

quick view

card

Answer Area

Case type	Form type
Case type A	Form type
Case type B	Form type
Case type C	Form type
Case type D	Form type
Case type E	Form type

- A. Mastered
- B. Not Mastered

Answer: A

Explanation:

Reference:
<https://docs.microsoft.com/en-us/dynamics365/customer-service/create-design-forms-customer-service-hub>

NEW QUESTION 38

- (Exam Topic 3)

You have a canvas app.

The canvas app must store data in a variable that is available only to the current screen. You need to create the variable.

Which two functions should you use? Each correct answer presents a complete solution. NOTE: Each correct selection is worth one point.

- A. Navigate
- B. UpdateContext
- C. Set
- D. Collect
- E. SaveData

Answer: AB

NEW QUESTION 42

- (Exam Topic 3)

A veterinary office plans to use Microsoft Power Platform to streamline customer experiences. The customer creates a canvas apps to manage appointments.

On the client appointment form, there is a dropdown field for clients to select their type of pet. If a client selects the option Other, a text field must appear so that staff members can add details about the pet.

You need to create a dynamically visible field. What should you configure?

- A. business rule
- B. business process flow
- C. workflow

Answer: A

NEW QUESTION 45

- (Exam Topic 3)

A company uses a Power Apps app with Microsoft Dataverse. The company requires the import of records into Dataverse. Duplicate records in the data must be deleted without user intervention. You create a duplicate detection rule. You need to configure the rule for the data import. Which option should you configure?

- A. Enable the Templates for Data Import option.
- B. Enable the When a record is created or updated option.
- C. Disable the Allow Duplicates option.
- D. Enable the During data import option.

Answer: D

NEW QUESTION 49

- (Exam Topic 3)

You manage Dynamics 365 for a company. You must prevent users from launching and using Power Automate. You need to hide the Flows button on the user interface. Which configuration setting should you change?

- A. the Customizations section of System Settings
- B. the Site Map
- C. the Buttons tab of Flow
- D. the Entity component of the default solution

Answer: A

Explanation:

Reference:
<https://www.inogic.com/blog/2018/10/show-or-hide-microsoft-flow-button-in-dynamics-365/>

NEW QUESTION 52

- (Exam Topic 3)

A company uses Power Apps. You create a custom table and configure a child table relationship with the contact table. You need to configure the cascading rules for each action. Which behavior should you use? To answer, drag the appropriate behaviors to the correct actions. Each behavior may be used once, more than once, or not at all. You may need to drag the split bar between panes or scroll to view content. NOTE: Each correct selection is worth one point.

Behaviors

Restrict

Cascade All

Cascade None

Answer Area

Action

Custom table record is deleted.

Custom table record is shared.

Behavior

- A. Mastered
- B. Not Mastered

Answer: A

Explanation:

Behaviors

Restrict

Cascade All

Cascade None

Answer Area

Action

Custom table record is deleted.

Custom table record is shared.

Behavior

Restrict

Cascade All

NEW QUESTION 55

- (Exam Topic 3)

You are creating a Power Virtual Agents chatbot for a Microsoft Power Platform power apps portal app. The job title of users must be stored automatically when users log in. The job title must always appear in the chatbot.

You need to configure the job title functionality. Which mechanism should you use?

- A. artificial intelligence
- B. variable
- C. entity
- D. topic

Answer: B

Explanation:

After enabling the Authentication, you will now have access to Two variables, bot.UserDisplayName
bot.UserId
Reference:
<https://powerusers.microsoft.com/t5/Power-Virtual-Agents-Community/Getting-User-Details-To-Use-In-Power>

NEW QUESTION 60

- (Exam Topic 3)
You are designing a Power Virtual Agents chatbot for a store.
You need to teach the chatbot to acknowledge the store's product categories and the variations within specific categories.
You need to create custom entities to provide the chatbot with the knowledge of the product categories. Which features should you use? To answer, select the appropriate options in the answer area.
NOTE: Each correct selection is worth one point.

Answer Area

Requirement	Feature
Analyze misspellings, grammar variations, and semantic variations.	<div><div>Slot filling</div><div>Synonyms</div><div>Smart matching</div><div>Topics</div><div>Fuzzy matching</div></div>
Make the bot smarter by expanding the matching logic.	<div><div>Slot filling</div><div>Synonyms</div><div>Topics</div></div>
Extract a category selected by a user during a conversation into a variable for later use.	<div><div>Slot filling</div><div>Synonyms</div><div>Smart matching</div><div>Topics</div></div>

- A. Mastered
- B. Not Mastered

Answer: A

Explanation:

Smart match Synonyms Topic
<https://docs.microsoft.com/en-us/power-virtual-agents/advanced-entities-slot-filling>

NEW QUESTION 65

- (Exam Topic 3)
You use Power Virtual Agents to create a bot that will answer and transfer help desk calls.
You create topics that contain nodes and functions. The company has the following requirements for the bot:
• When a caller states the word issue, help, or problem, the bot must respond with the question. "How can we help you today?"
• When the bot responds with the question, "How can we help you today?", the bot must provide the caller with the choices of hardware, software or other
• When the caller asks a question, the bot must save the response so that it can perform an action on the response.
You need to configure the bot.
Which nodes or functions should you use? To answer, select the appropriate options in the answer area.

Answer Area

Requirement	Node/Function
Caller states issue, help, or problem.	<div>Trigger phrase</div> <div>Trigger phrase</div> <div>Question</div> <div>Message</div> <div>Action</div>
Bot provides choices.	<div>Question</div> <div>Action</div> <div>Question</div> <div>Message</div> <div>Variable</div>
Responses are temporarily saved.	<div>Identifier</div> <div>Action</div> <div>Variable</div> <div>Trigger</div> <div>Identifier</div>

- A. Mastered
B. Not Mastered

Answer: A

Explanation:

Answer Area

Requirement	Node/Function
Caller states issue, help, or problem.	<div>Trigger phrase</div> <div>Trigger phrase</div> <div>Question</div> <div>Message</div> <div>Action</div>
Bot provides choices.	<div>Question</div> <div>Action</div> <div>Question</div> <div>Message</div> <div>Variable</div>
Responses are temporarily saved.	<div>Identifier</div> <div>Action</div> <div>Variable</div> <div>Trigger</div> <div>Identifier</div>

NEW QUESTION 69

- (Exam Topic 3)

A Company plans to send escalation emails to all customers with overdue invoices. You are creating a Microsoft Power Automate flow to determine whether to send an escalation email.

The system must send an alert for all invoices that are seven days or more overdue. You need to configure the flow.

Which expression should you use?

- A. `TriggerEmail() = 'OverdueDate' >= 7;`
- B. `'OverdueDate' >= '7'?TriggerEmail():false`
- C. `@GreaterOrEquals(TriggerEmail()['OverdueDate']: '7')`

- A. Option A
B. Option B
C. Option C

Answer: C

Explanation:
Example: equals(triggerOutputs()['body/PDFStatus/Value'],'Ready to Generate') Reference:
<https://evolvous.com/microsoft-power-automate-trigger-condition/>

NEW QUESTION 73

- (Exam Topic 3)

You are a Dynamics 365 Customer Service administrator.

Users report that the main form does not display data from other entities or allow them to edit data from other entities.

You need to embed information from other entities in the form and allow users to edit the data. Which actions should you perform? To answer, select the appropriate options in the answer area. NOTE: Each correct selection is worth one point.

Requirement	Action
Edit data	<div><div></div><div><div>Add a mobile form</div><div>Add a quick create form</div><div>Add a sub-grid</div><div>Add a virtual entity</div></div></div>
View data	<div><div></div><div><div>Add a reference panel</div><div>Add a quick view</div></div></div>

- A. Mastered
B. Not Mastered

Answer: A

Explanation:

Graphical user interface, text, application, chat or text message Description automatically generated

Box 1: Add a quick create form

With quick create forms, your app can have a streamlined data entry experience with full support for logic defined by form scripts and business rules.

Box 2: Add a quick view

A quick view form can be added to another form as a quick view control. It provides a template to view information about a related entity record within a form for another entity record. This means your app users do not need to navigate to a different record to see the information needed to do their work.

Reference:

<https://docs.microsoft.com/en-us/powerapps/maker/model-driven-apps/create-edit-quick-create-forms> <https://docs.microsoft.com/en-us/dynamics365/customerengagement/on-premises/customize/create-edit-quick-v>

NEW QUESTION 75

- (Exam Topic 3)

You create a model-driven app for an automobile parts help desk.

A help desk agent uses a form to gather information about customers' automobiles in two custom tables. The names of the tables are Client and Automobile, The form must prepopulate the following information about the customer from the client table:

- First name
- Last name

The agent must be able to type the following information about the automobile:

- Automobile make
- Automobile model

You need to implement the form.

What should you configure? To answer, select the appropriate options in the answer area. NOTE: Each correct selection is worth one point.

Requirement	Configuration
Prepopulate client information	<div><div>Relationship</div><div>Dataflow</div><div>Relationship</div><div>Alternate key</div><div>Virtual table</div></div>
Enter automobile information	<div><div>Table</div><div>Table</div><div>View</div><div>Connector</div><div>Power Automate flow</div></div>

- A. Mastered
B. Not Mastered

Answer: A

Explanation:
Answer Area

Requirement

Prepopulate client information

Enter automobile information

Configuration

Relationship

Dataflow

Relationship

Alternate key

Virtual table

Table

Table

View

Connector

Power Automate flow

NEW QUESTION 76

- (Exam Topic 3)
A company is developing several Power Virtual Agents chatbots. The company manufactures more than 1,000 different products. The chatbots must prompt users to enter or select a product. You need to store the model information so that it can be reused across all chatbots. Where should you store the model data?

- A. Global variables
- B. Custom entities
- C. Topics
- D. Multiple choice options

Answer: A

NEW QUESTION 80

- (Exam Topic 3)
You are a Dynamics 365 Customer Services administrator. You have a Production instance and Sandbox instance. Users record Production instance data in the Sandbox instance. You need to ensure that the users only record data in the Production instance. Which security function needs to be edited to prevent access to the Sandbox? To answer, select the appropriate options in the answer area. NOTE: Each correct selection is worth one point.

Application area	Security function
Microsoft 365 admin center	<div><div>Roles</div><div>Groups</div><div>Licenses</div><div>Access rights</div></div>
Dynamics 365 Sandbox instance	<div><div>Roles</div><div>Groups</div><div>Access rights</div></div>

- A. Mastered
- B. Not Mastered

Answer: A

Explanation:
Reference:
<https://docs.microsoft.com/en-us/power-platform/admin/control-user-access>

NEW QUESTION 84

- (Exam Topic 3)
You create functionality for a company. The functionality includes a Microsoft Dataverse table with a form for data entry. The functionality will be distributed to other lines of business in the company, each with its own Dataverse environment. New forms must not be created in order for updates to the functionality to work correctly. You need to package the new functionality for distribution. What should you do?

- A. Use a patch solution and disable the ability to create new forms for the table.
- B. Use a managed solution and include only the needed form.

- C. Use an unmanaged solution and include only the needed form.
- D. Use a managed solution and disable the ability to create new forms for the table.

Answer: B

Explanation:

Managed solutions are used to deploy to any environment that isn't a development environment for that solution. This includes test, UAT, SIT, and production environments. Managed solutions can be serviced independently from other managed solutions in an environment. As an ALM best practice, managed solutions should be generated by exporting an unmanaged solution as managed and considered a build artifact. Additionally: You can't edit components directly within a managed solution.

Reference: <https://docs.microsoft.com/en-us/power-platform/alm/solution-concepts-alm>

NEW QUESTION 88

- (Exam Topic 3)

You are a Dynamics 365 Customer Engagement administrator. You create a new solution in Dynamics 365. You need to help end users understand which actions to take next and ensure that user interaction occurs in manageable steps.

Which actions should you perform? To answer, select the appropriate options in the answer area. NOTE: Each correct selection is worth one point.

Guide the user with actions to take.

Configure views and charts.

Configure business process flows.

Configure workflows.

Ensure user interaction in manageable steps.

Configure the timeline on the form.

Configure each stage with the actions that need to be completed.

Configure Insights.

- A. Mastered
- B. Not Mastered

Answer: A

Explanation:

Guide the user with actions to take.

Configure views and charts.

Configure business process flows.

Configure workflows.

Ensure user interaction in manageable steps.

Configure the timeline on the form.

Configure each stage with the actions that need to be completed.

Configure Insights.

NEW QUESTION 92

- (Exam Topic 3)

A customer uses Power Apps to view and maintain their contacts that are stored in Microsoft Dataverse. Several columns must be configured to ensure the security settings for sales associates are view only. You need to configure the access restrictions.

Which component for field-level security should you use? TO answer, select the appropriate options in the answer area.

NOTE: Each correct selection is worth one point

Action	Component
Enable the fields for record-level security.	<div><div></div><div>Azure Data Lake Gen2</div><div>Azure SQL</div><div>Power Apps app designer</div><div>Microsoft Power Platform admin center</div></div>
Set the security settings for the sales associates to view only.	<div><div></div><div>Azure Active Directory group team</div><div>Dataverse table</div><div>Field Security Profiles</div><div>User</div></div>

- A. Mastered
- B. Not Mastered

Answer: A

Explanation:
Graphical user interface, text, application Description automatically generated

NEW QUESTION 96

- (Exam Topic 3)
A company has a canvas app that includes the following screens: Screen1 and Screen2. The OnVisible property for Screen1 contains the following expression.
Set(AgeGroups, ["1-25", "26-54", "55+"])
For each of the following statements, select Yes if the statement is true. Otherwise, select No. NOTE: Each correct selection is worth one point.

Statements	Yes	No
AgeGroups can be accessed from Screen1 and Screen2.	<input type="radio"/>	<input type="radio"/>
AgeGroups is a collection.	<input type="radio"/>	<input type="radio"/>
You can use the Update function to change values in AgeGroups.	<input type="radio"/>	<input type="radio"/>

- A. Mastered
B. Not Mastered

Answer: A

Explanation:

Statements	Yes	No
AgeGroups can be accessed from Screen1 and Screen2.	<input type="radio"/>	<input checked="" type="radio"/>
AgeGroups is a collection.	<input type="radio"/>	<input checked="" type="radio"/>
You can use the Update function to change values in AgeGroups.	<input checked="" type="radio"/>	<input type="radio"/>

NEW QUESTION 97

- (Exam Topic 3)
You create a canvas app that uses data from a Microsoft SQL Server database.
You use a dataflow to move some of the data from the database to Microsoft Dataverse. Users will filter the data by using the app.
You need to filter data in the dataflow and in the canvas app.
Which tools should you use? To answer, drag the appropriate tools to the correct requirements. Each tool may be used once, more than once, or not at all. You may need to drag the split bar between panes or scroll to view content.

Tools

Power Fx

Power Query

T-SQL

Kusto

Answer Area

Requirement	Tool
Filter data in the dataflow.	
Filter data in the canvas app.	

- A. Mastered
B. Not Mastered

Answer: A

Explanation:

Tools

Power Fx

Power Query

T-SQL

Kusto

Answer Area

Requirement

Filter data in the dataflow.

Filter data in the canvas app.

Tool

Power Query

T-SQL

NEW QUESTION 98

- (Exam Topic 3)

You have a model-driven app. You create five Microsoft Excel templates for analyzing customer data. Four of the templates must be available to all users. The remaining template must be available only to you.

You configure the appropriate security roles for users.

You need to determine how to upload the Excel templates.

Which method should you use? To answer, select the appropriate options in the answer area.

NOTE: Each correct selection is worth one point.

Availability

Method

Available to everyone

In the Settings menu, select Document Templates.

In the view for the email records, select Excel Templates.

In the Settings menu, select Email Templates.

Available only to yourself

In the Settings menu, select Document Templates.

In the view for the email records, select Excel Templates.

In the Settings menu, select Email Templates.

- A. Mastered
- B. Not Mastered

Answer: A

Explanation:

Table Description automatically generated with medium confidence

Box 1: In the Settings menu, select Document Templates

Templates uploaded from the Settings page are available to all users. You don't need to take any further action. Administrators can use the Settings page to upload the Excel template. A template uploaded in Settings is available to all users.

For admins: Upload the Excel template

- Go to Settings > Templates > Document Templates.
- Click Upload Template.
- Drag the Excel file into the dialog box or browse to find and upload the file.
- Upload Template dialog box.
- Click Upload.

Box 2: In the view for the email records, select Excel templates

Note: For non-admins or admins wanting to create a personal template: Upload the Excel template

Open a page with a list of records, for example, the list of Sales Opportunities. Go to Sales > Opportunities > My Open Opportunities.

- On the menu bar, click Excel Templates > Create Excel Template.
- Click Excel Template > Upload.
- Click Upload to add the Excel template.
- Drag the file into the dialog box or browse to find and upload the file.
- Click Upload.

Reference:

<https://docs.microsoft.com/en-us/power-platform/admin/analyze-your-data-with-excel-templates>

NEW QUESTION 103

- (Exam Topic 3)

You implement an editable grid for the Account entity.

The business team provides the following list of features that they would like you to implement:

- Group by or sort columns in the current view.
- Configure a business rule to show an error message.
- Edit values in calculated fields.
- Edit the Address composite field.

➤ Use the editable grid on mobile phones.
Which actions can you perform? To answer, select the appropriate options in the answer area. NOTE: Each correct selection is worth one point.

Action	Can be performed?
Group by or sort columns in the current view.	<div><div>Yes</div><div>No</div></div>
Configure a business rule to show an error message.	<div><div>Yes</div><div>No</div></div>
Edit values in calculated fields.	<div><div>Yes</div><div>No</div></div>
Edit the Address composite field.	<div><div>Yes</div><div>No</div></div>
Use the editable grid on mobile phones.	<div><div>Yes</div><div>No</div></div>

- A. Mastered
- B. Not Mastered

Answer: A

Explanation:

Action	Can be performed?
Group by or sort columns in the current view.	<div><div>Yes</div><div>No</div></div>
Configure a business rule to show an error message.	<div><div>Yes</div><div>No</div></div>
Edit values in calculated fields.	<div><div>Yes</div><div>No</div></div>
Edit the Address composite field.	<div><div>Yes</div><div>No</div></div>
Use the editable grid on mobile phones.	<div><div>Yes</div><div>No</div></div>

NEW QUESTION 105

- (Exam Topic 3)

A company creates a Microsoft Power Apps app through the Power Apps designer portal for use in Microsoft Teams. This app needs to be promoted to the user acceptance testing environment. You need to complete the Microsoft recommended actions before you export the solution. Which two actions should you complete? Each correct answer presents part of the solution. NOTE: Each correct selection is worth one point.

- A. Write validation tests.
- B. Set the Optimized embedding appearance field to true.
- C. Publish all changes.
- D. Run the solution checker.
- E. Clone a solution.

Answer: DE

Explanation:

The Power Apps solution checker performs a rich static analysis check on your solutions against a set of best practice rules to quickly identify problematic patterns. After the check completes, you receive a detailed report that lists the issues identified, the components and code affected, and links to documentation that describes how to resolve each issue. The solution checker analyzes these solution components: Common Data Service plug-ins
Common Data Service custom workflow activities

Common Data Service web resources (HTML and JavaScript) Common Data Service configurations, such as SDK message steps Reference:
<https://www.eimagine.com/ui/>

NEW QUESTION 110

- (Exam Topic 3)

You plan on implementing complex business logic in Microsoft Dataverse tables by using Power Automate flows.

You realize that the functionality required to implement the business logic is not available in a Power Automate flow.

The new business logic must work in multiple Dataverse tables. In addition, the operation must return a value after it finishes and must be able to run from an existing Dataverse action.

You need to recommend the method to implement the missing logic. What should you recommend?

- A. Scheduled workflow
- B. Bound action
- C. Custom API
- D. Unbound action

Answer: D

Explanation:

<https://docs.microsoft.com/en-us/power-automate/dataverse/bound-unbound>

<https://docs.microsoft.com/en-us/power-apps/developer/data-platform/custom-api>

NEW QUESTION 113

- (Exam Topic 3)

You are a Dynamics 365 Customer Engagement administrator. You create workflows to automate business processes. You need to configure a workflow to meet the following requirements:

- Be triggered when a condition is met.
- Run immediately.
- Perform an action when a condition is met.

How should you configure the workflow? To answer, select the appropriate configuration in the answer area. NOTE: Each correct selection is worth one point.

Workflow Requirement	Configuration Option
Be triggered when a condition is met.	<div>Publish workflow.</div> <div>Subject contains data.</div> <div>Trigger when a Microsoft Flow button is pressed.</div>
Run immediately.	<div>Approve the workflow.</div> <div>Configure the workflow to run now.</div> <div>Configure child workflow to run now.</div>
Perform an action when a condition is met.	<div>Send an email.</div> <div>View chart.</div> <div>Update a security role.</div>

- A. Mastered
- B. Not Mastered

Answer: A

Explanation:

- 1) Be triggered when a condition is met - Subject contains data
- 2) Run Immediately - Configure the workflow to run now
- 3) Perform an action when a condition is met - send an email

NEW QUESTION 117

- (Exam Topic 3)

Note: This question is part of a series of questions that present the same scenario. Each question in the series contains a unique solution that might meet the stated goals. Some question sets might have more than one correct solution, while others might not have a correct solution.

After you answer a question in this section, you will NOT be able to return to it. As a result, these questions will not appear in the review screen.

You administer the Microsoft 365 and Power Platform environments for Contoso, Ltd. The company has a model-driven app that is used to track customer interactions with employees. The app uses standard table types for customers. A user named Elisabeth Rice signs in to the app by using the following sign in name: Elisabeth.Rice@contoso.com.

After marriage, Elisabeth changes her legal name to Elisabeth Mueller.

You need to update the sign in name for the user without losing any application history.

Solution: Ask the Microsoft 365 administrator to sign in to the admin portal and change the username. Does the solution meet the goal?

- A. Yes
- B. No

Answer: A

NEW QUESTION 118

- (Exam Topic 3)

You have a canvas app with an embedded Power BI tile.

You share the canvas app. Users report that they are unable to access the Power BI content. You need to determine why users are unable to access the content

What is the cause of the user s problems?

- A. The Power BI dashboard is not shared.
- B. The Power BI interactions property on the Power BI tiles is set to Off.
- C. The Power BI connection is not shared.
- D. The Power BI Display mode property on the Power BI tiles is set to Disabled

Answer: D

NEW QUESTION 122

- (Exam Topic 3)

A company creates a Microsoft Teams app that stores data in two tables in a Microsoft Dataverse for Teams environment. Users require access to the app and the app data. You need to configure access. What should you do? To answer, select the appropriate options in the answer area. NOTE: Each correct selection is worth one point.

Answer Area

Access	Action
Access to the data	<div>Share the data and assign permissions. </div> <div>Assign a permission set for each table in the app.</div> <div>Create a security role and assign permissions by table.</div> <div>Share the data and assign permissions.</div>
Access to the app	<div>Publish the app to a Teams channel. </div> <div>Share with a security group.</div> <div>Share with users.</div> <div>Publish the app to a Teams channel.</div>

- A. Mastered
- B. Not Mastered

Answer: A

Explanation:

Answer Area

Access	Action
Access to the data	<div>Share the data and assign permissions. </div> <div>Assign a permission set for each table in the app.</div> <div>Create a security role and assign permissions by table.</div> <div>Share the data and assign permissions.</div>
Access to the app	<div>Publish the app to a Teams channel. </div> <div>Share with a security group.</div> <div>Share with users.</div> <div>Publish the app to a Teams channel.</div>

NEW QUESTION 124

- (Exam Topic 3)

A company uses Power Apps and Power Automate. There is an issue with the existing flow in the test environment. Development changes are allowed in the test environment. You need to troubleshoot the issue with the flow. Which command should you use? To answer, select the appropriate options in the answer area. NOTE: Each correct selection is worth one point.

Action	Command
Enable changes to the flow.	<div>Add existing</div> <div>Remove</div> <div>Edit</div> <div>Turn off</div>
Enable changes to the object.	<div>Edit</div> <div>Publish</div> <div>Turn off</div>

- A. Mastered
- B. Not Mastered

Answer: A

Explanation:

Graphical user interface, text, application Description automatically generated

NEW QUESTION 129

- (Exam Topic 3)

You add a business process flow to the Account table. The flow has three stages. You need to ensure that a workflow can run when a user completes the final stage. Which option should you use?

- A. Start when: Record status changes
- B. Available to run: Run this workflow in the background
- C. Available to run: As an on-demand process
- D. Available to run: As a child process

Answer: C

Explanation:

You can trigger on-demand workflows from inside a business process flow. For example, you can add an on-demand workflow to a business process flow so that an activity, such as a task or email, is created whenever a stage is completed.

Note: A workflow becomes activated based on where you drop the workflow onto the business process flow designer.

On-demand stage processes. When the workflow is dropped onto a business process flow stage, the workflow is triggered on entry or exit of the stage.

Reference:

<https://docs.microsoft.com/en-us/power-automate/bpf-add-on-demand-workflow>

NEW QUESTION 131

- (Exam Topic 3)

You create a parent entity and a child entity. The parent entity has a 1:N relationship with the child entity. You need to ensure that when the owner changes on the parent record that all child records are assigned to the new owner.

You need to configure the relationship behavior type. What should you use?

- A. Parental
- B. Referential, Restrict Delete
- C. Referential
- D. Restrict

Answer: A

Explanation:

<https://docs.microsoft.com/en-us/dynamics365/customer-engagement/customize/create-and-edit-1n-relationship> A parental table relationship is any 1:N table relationship where one of the cascading options in the Parental column of the following table is true.

Graphical user interface, application Description automatically generated

Action	Parental	Not Parental
Assign	Cascade All Cascade User-owned Cascade Active	Cascade None
Delete	Cascade All	RemoveLink Restrict
Reparent	Cascade All Cascade User-owned Cascade Active	Cascade None
Share	Cascade All Cascade User-owned Cascade Active	Cascade None
Unshare	Cascade All Cascade User-owned Cascade Active	Cascade None

Reference:

<https://docs.microsoft.com/en-us/powerapps/maker/data-platform/create-edit-entity-relationships>

NEW QUESTION 134

- (Exam Topic 3)

You use Power BI Desktop to configure Power BI reports and dashboards.

You need to create a canvas app that displays account information and include the app in a Power BI report. Which three actions should you perform? Each correct answer presents part of the solution.

NOTE Each correct selection is worth one point.

- A. Publish the report to the Power BI service.
- B. Connect to Common Data Service from Power BI Desktop.
- C. Connect Common Data Service from Power BI Deskto
- D. Selected required fields from the Accounts table.
- E. From the Power Apps Insert menu, add a Power BI
- F. From the Power BI Desktop menu, insert a Power Apps visual and include the required fields in the Power Apps data.

Answer: CDE

NEW QUESTION 136

- (Exam Topic 3)

You modify a model-driven app for a bicycle repair help desk. The model-driven app is for help desk users when customers have an issue with their bicycle. After you add a custom table named bicycle, you configure the table for Microsoft Dataverse search. The table will contain information from callers about their bicycles. The account table is related to the custom table. Contact information is brought over to the custom table. You add the following columns to the table:

- > Bicycle type
- > Tire brand
- > Special equipment

Users must be able to perform the following types of searches:

- > Search for all customers who have a bicycle type of Contoso and live in Florida.
- > Search all tables for any record that contains the word broken.
- > You need to decide which type of search will give you the results desired.

Which search should you configure? To answer, drag the appropriate search types to the correct requirements. Each search type may be used once, more than once, or not at all. You may need to drag the split bar between panes or scroll to view content.

NOTE: Each correct selection is worth one point.

Search types

Dataverse search

Quick find

Advanced find

Answer Area

Requirements

Customer with bicycle type of Contoso and lives in Florida

Includes the word **broken** across tables

Search type

- A. Mastered
B. Not Mastered

Answer: A

Explanation:

Text Description automatically generated

Box 1: Advanced find

Operators for advanced search: Lets you use simple Boolean operators in your search term and craft the query to get the results you want.

Box 2: Dataverse search

Dataverse search helps you quickly find what you're looking for. It delivers fast and comprehensive results across multiple tables in a single list, sorted by relevance.

Reference: <https://docs.microsoft.com/en-us/power-apps/user/quick-find> <https://docs.microsoft.com/en-us/power-platform/admin/configure-relevance-search-organization>

NEW QUESTION 139

- (Exam Topic 3)

You are customizing a model-driven app for a company. You create a Theme template to ensure the company logo and colors are properly used within these apps.

The theme must meet the following requirements:

- > Updated to add the logo
- > Downloaded by the makers to create the app

You need to configure the assets. To answer, drag the appropriate configurations to the correct requirements. Each configuration may be used once, more than once, or not at all. You may need to drag the split bar between panes or scroll to view content.

NOTE: Each correct selection is worth one point.

Configurations

Edit the theme in System settings and upload a jpg file.

Replace an existing UI item's hexadecimal number.

Upload the theme elements as new web resources.

Use the component library.

Answer Area

Requirement

Update logo.

Change model-driven app colors.

Configuration

- A. Mastered
B. Not Mastered

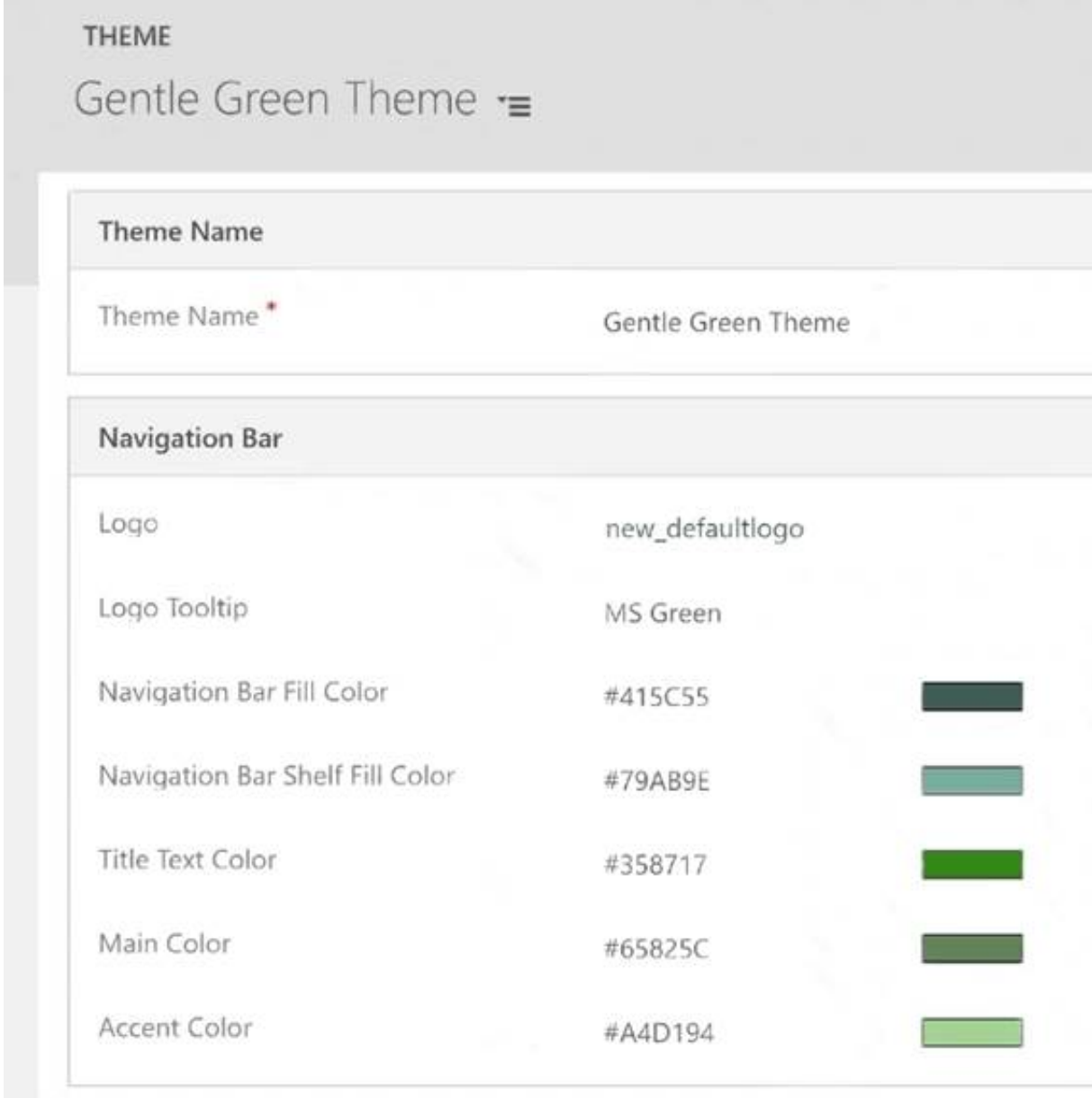
Answer: A

Explanation:

Box 1: Upload the theme elements as new web resources.
Each type of icon is stored as a web resource. Create a web resource first and then set the icons to use them. Alternatively, you can add the icon by creating a new web resource when you define the table properties.
Box 2: Replace an existing UI item's hexadecimal number. Copy and alter the existing theme
The easiest and quickest way to create a new theme is to clone and alter an existing theme. Then save, preview, and publish it.

- Sign in to Power Apps, select Settings icon (upper right), and then select Advanced settings.
- Select Customizations, and then select Themes.
- Under All themes, select the theme you want to clone, such as the CRM Default Theme. Select Clone on the command bar.
- Replace an existing UI item's hexadecimal number, such as the Title Text Color, with the hexadecimal value that represents the color you want.

For example, the CRM Default Theme was cloned and changed using mostly varying shades of green color. The following screenshots show the new colors for navigation and highlighting. A custom logo was also added that will appear in the upper left corner of an app.



Reference:
<https://docs.microsoft.com/en-us/power-apps/maker/model-driven-apps/create-themes-organization-branding>

NEW QUESTION 144

- (Exam Topic 3)
You are examining several processes to determine if you can automate the processes by using Power Automate. The processes must run without human intervention when possible. You need to determine which flow type should be used for each process. Which flow type should you use? To answer, drag the appropriate processes to the correct flow types. Each process may be used once, more than once, or not at all. You may need to drag the split bar between panes or scroll to view content.
NOTE: Each correct selection is worth one point.

Flow types	Answer Area	
	Process	Flow type
Scheduled cloud flow	Employees enter leave requests into a web page. Use web automation to collect data from the web browser and send the information to a supervisor so that the supervisor can approve or reject the leave request.	
Attended desktop flow		
Unattended desktop flow	Read data from a text file and populate the data into a third-party desktop application by using saved credentials.	

- A. Mastered
- B. Not Mastered

Answer: A

Explanation:

Text Description automatically generated

Box 1: Attended desktop flow

Desktop flows are used to automate tasks on the Web or the desktop.

To run an attended desktop flow, you need to have an active Windows user session that matches the name of the user configured for your connection.

Note: Web applications are critical components of most organizations, and they are commonly used to access data from servers.

Most CRM and ERP platforms run through web browsers, while the most popular business productivity tools are web services. Web applications are unquestionably an integral part of the technological infrastructure of most companies.

To provide automation solutions for these applications, Power Automate Desktop supports all major browsers through its web automation actions.

Box 2: Unattended desktop flow.

Unattended desktop flows are best for applications that do not need human supervision. References:

<https://docs.microsoft.com/en-us/learn/modules/pad-web/1-introduction> <https://docs.microsoft.com/en-us/power-automate/desktop-flows/run-pad-flow>

NEW QUESTION 146

- (Exam Topic 3)

Your organization does not permit the use of custom code for solutions. You need to create a view that can be viewed by all users in an organization. Where should you create the view?

- A. List view of the entity
- B. Microsoft Visual Studio
- C. Templates area
- D. Maker portal

Answer: A

Explanation:

Edit a public or system view in app designer

You can change the way a public or system view is displayed by adding, configuring, or removing columns.

➤ In the Views list for a table, select the Show list of references down arrow Drop Down. Edit View.Graphical user interface, application Description automatically generated

➤ Next to the view you want to edit, select Open the View Designer Open view Designer. The view opens in the view designer.

When you edit a public or system view, you must save and publish your changes before they will be visible in the application.

Reference:

<https://docs.microsoft.com/en-us/powerapps/maker/model-driven-apps/create-edit-views-app-designer>

NEW QUESTION 147

- (Exam Topic 3)

You are a Dynamics 365 Customer Service developer. A salesperson creates a chart.

You need to ensure that the chart is available to all users on the team.

Which actions should the salesperson perform? To answer, drag the appropriate actions to the correct users. Each action may be used once, more than once, or not at all. You may need to drag the split bar between panes or scroll to view content.

NOTE: Each correct selection is worth one point.

Actions		Answer Area	
Share the chart with the team.		Step	Action
Assign the chart to each person on the team.		1	Action
Export the user chart to Microsoft Power BI. Import it as a Power BI visualization.		2	Action
Export the user chart for import as a user chart.			
Export the user chart for import as a system chart.			

- A. Mastered
- B. Not Mastered

Answer: A

Explanation:

Actions	Answer Area
Share the chart with the team.	
Assign the chart to each person on the team.	
Export the user chart to Microsoft Power BI. Import it as a Power BI visualization.	
Export the user chart for import as a user chart.	
Export the user chart for import as a system chart.	

Step	Action
1	Export the user chart for import as a user chart.
2	Share the chart with the team.

NEW QUESTION 152

- (Exam Topic 3)
You are a Dynamics 365 Customer Service system administrator.
Your organization does not permit the use of custom code for solutions. You need to create a view that can be viewed by all users in an organization. Where should you create the view?

- A. Microsoft Excel template
- B. Entities component of a solution
- C. Microsoft Virtual Studio
- D. Templates area

Answer: B

Explanation:

Entity: Refers to a table in Dataverse. Table and entity are often used interchangeably for data access. Edit public views through tables
➤ Expand Data, select Tables, select the table you want, and then select the Views area.
➤ On the toolbar, select Add view. Add view to table
➤ On the Create a view dialog, enter a name and, optionally, a description, and then select Create. Reference:
<https://docs.microsoft.com/en-us/power-apps/maker/model-driven-apps/create-edit-views-app-designer>

NEW QUESTION 153

- (Exam Topic 3)
You are designing a canvas app that connects to Common Data Service.
You need to configure the app to meet the requirements and ensure that the canvas app is available offline. What should you implement? To answer, select the appropriate options in the answer area.
NOTE: Each correct selection is worth one point.

Requirement	Function
Pass values from the current screen when moving to another screen.	<div>▼</div> <div>Navigate Back MovePrevious</div>
Display data to a user when the app is offline.	<div>▼</div> <div>LoadData LoadDateOffline ShowData</div>

- A. Mastered
- B. Not Mastered

Answer: A

Explanation:

Reference:
<https://docs.microsoft.com/en-us/powerapps/maker/canvas-apps/offline-apps>

NEW QUESTION 154

- (Exam Topic 3)

You are designing an app for a bank.
You must create entities for the app and configure relationships between entities:

Entity	Requirements
LoanApplicant	This entity represents a person who is applying for a loan. The entity must contain an attribute named Email. This attribute must provide look-up for the name of the applicant.
Loan	This entity represents a loan application. Loan applicants may apply for one loan per application. Loan applicants may have more than one active application.
Property	This entity represents the property that the applicant intends to purchase.

Which relationship types should you use? To answer, drag the appropriate relationship types to the correct requirements. Each relationship type may be used once, more than once, or not at all. You may need to drag the split bar between panes or scroll to view content.
NOTE: Each correct selection is worth one point.

Relationship types

1 : N

N : N

N : 1

Answer Area

Requirement	Relationship type
The email attribute of the Loan Applicant entity must provide a look-up to the contact name and email.	<div></div>
Loan applicants can apply for one type of loan per application. Applicants can have more than one application.	<div></div>
Loans must be applied for for a single property.	<div></div>

- A. Mastered
- B. Not Mastered

Answer: A

Explanation:
Text Description automatically generated
Box 1: N:1
You add a lookup column with a many-to-one relationship.
Box 2: N:N
Box 3: N:1
Reference:
<https://docs.microsoft.com/en-us/powerapps/maker/data-platform/data-platform-entity-lookup>

NEW QUESTION 159

- (Exam Topic 3)
You plan to create user interface (UI) flows to automate several web-based business processes that you currently perform manually. You need to ensure that users can create and run web UI flows.
Which three components must you install and configure on user's devices? Each correct answer presents part of the solution. NOTE Each correct selection is worth one point.

- A. UI Flows application
- B. Selenium IDE
- C. Latest version of Microsoft Edge
- D. On-premises data gateway
- E. Latest version of Mozilla Firefox

Answer: ABC

Explanation:
Reference:
<https://docs.microsoft.com/en-us/power-automate/ui-flows/setup>

NEW QUESTION 162

- (Exam Topic 3)
A company plans to create a Power Virtual Agents chatbot. The bot has the following requirements:
• Prompt for a location of the customer and the call must be routed to a support agent for the location.
• Transfer support calls at each location to a support bot that uses the Bot Framework. You need to configure the bot.
Which components should you use? To answer, drag the appropriate components to the correct requirements. Each component may be used once, more than once, or not at all. You may need to drag the split bar between panes or scroll to view content.
NOTE: Each correct select is worth one point.

Components

Variables

Skills

Topics

Entities

Answer Area

Requirement

Route to location.
Route to support bot.

Component

- A. Mastered
B. Not Mastered

Answer: A

Explanation:

Components

Variables

Skills

Topics

Entities

Answer Area

Requirement

Route to location.
Route to support bot.

Component

Topics

Variables

NEW QUESTION 163

- (Exam Topic 3)

A company creates a model-driven app.

Users require access to a Power BI report that is embedded in the app. You need to configure the app.

Where should you add the report?

- A. XML report
B. Dashboard
C. Business rule
D. Power Automate cloud flow

Answer: B

NEW QUESTION 165

- (Exam Topic 3)

You are a Dynamics 365 for Customer Service developer.

You must trigger a mobile notification whenever a specific hashtag is posted from Twitter. The notification will send email to the company’s social media teams distribution list.

You need to create a connection to the Twitter service and build a solution.

Which four actions should you perform in sequence? To answer, move the appropriate actions from the list of actions to the answer area and arrange them in the correct order.

Actions	Answer Area
Sign in to the Business platform admin center and create a new project and connection set.	
Create a trigger to search for the new posts with the hashtag.	
Create an action to send a mobile notification.	
Sign in to Power Automate and create a new blank flow.	<div>⏮</div> <div>⏭</div>
Create a trigger to send a mobile notification.	
Select the social media connector, generate an authentication key from the service, and enter the key for the connection.	
Create an action to search for the new posts with the hashtag.	
Select the social media connector and enter the user credentials for the connection.	

- A. Mastered
- B. Not Mastered

Answer: A

Explanation:

Actions	Answer Area
Sign in to the Business platform admin center and create a new project and connection set.	Sign in to Power Automate and create a new blank flow.
Create a trigger to search for the new posts with the hashtag.	Select the social media connector and enter the user credentials for the connection.
Create an action to send a mobile notification.	
Sign in to Power Automate and create a new blank flow.	<div>⏮</div> <div>⏭</div> <div>⏮</div> <div>⏭</div>
Create a trigger to send a mobile notification.	
Select the social media connector, generate an authentication key from the service, and enter the key for the connection.	
Create an action to search for the new posts with the hashtag.	
Select the social media connector and enter the user credentials for the connection.	Create a trigger to send a mobile notification.

NEW QUESTION 167

- (Exam Topic 3)

You are developing a canvas app.

You need to apply business rules to the app without writing code.

Which three actions can you use? Each correct answer presents a complete solution.

NOTE: Each correct selection is worth one point.

- A. Validate data and show error messages.
- B. Enable or disable fields.
- C. Set field requirement levels.
- D. Set field values.
- E. Show or hide fields

Answer: ACD

Explanation:

The following actions are not available on Canvas apps:

- > Show or hide columns
- > Enable or disable columns
- > Create business recommendations based on business intelligence Reference:

<https://docs.microsoft.com/en-us/powerapps/maker/data-platform/data-platform-create-business-rule>

NEW QUESTION 169

- (Exam Topic 3)

You plan to implement Microsoft Dataverse.

You must track changes for two columns in the Account table. You must maintain a historical log of changes for the two columns and track only what is necessary.

You configure the appropriate organization settings.

You need to configure the system to track changes for the two columns.

Which two actions should you perform? Each correct answer presents part of the solution.

NOTE: Each correct selection is worth one point.

- A. Enable auditing for the Account table.
- B. Enable auditing for the two specific columns.
- C. Enable change tracking for the Account table.
- D. Enable change tracking for the two specific columns.

Answer: AB

Explanation:

By setting the `IsAuditEnabled` property of a table's definition and the `IsAuditEnabled` property of each desired column's definition to true, data changes to records of those tables can be logged by the platform.

Note: There are three levels where auditing can be configured: organization, table, and column. The organization level is the highest level, followed by the table level, and finally the column level. For column auditing to take place, auditing must be enabled at the column, table, and organization levels. For table auditing to take place, auditing must be enabled at the table and organization levels.

Reference:

<https://docs.microsoft.com/en-us/powerapps/developer/data-platform/configure-entities-attributes-auditing>

NEW QUESTION 174

- (Exam Topic 3)

You create a JavaScript web resource named `MyBusinessLogic`. The code it contains uses functionality from a third-party JavaScript library.

You notice that an independent software vendor (ISV) solution uses the same third-party library in their managed solution.

You plan to deploy your solution to other environments by using a managed solution. The ISV solution might not be installed in the other environments.

You need to package the solution for deployment

What are two ways to achieve this goal? Each correct answer presents a complete solution.

NOTE: Each correct selection is worth one point.

- A. Create a new JavaScript web resource by using the code from the third-party library
- B. Add the new JavaScript web resource along with `MyBusinessLogic` to the solution.
- C. Add a copy of the JavaScript library from the ISV to the solution along with `MyBusinessLogic`.
- D. Add the code from the third-party JavaScript library to `MyBusinessLogi`
- E. Add `MyBusinessLogic` to the solution.
- F. Add only the third-party JavaScript web resource to the solution.

Answer: AC

Explanation:

Web resources in model-driven apps.

Web resources are virtual files that are stored in the Microsoft Dataverse database and that you can retrieve by using a unique URL address.

Capabilities of web resources.

Web resources represent files that can be used to extend the Dataverse web application such as html files, JavaScript, and CSS, and several image formats.

Reference: <https://docs.microsoft.com/en-us/power-apps/developer/model-driven-apps/web-resources>

NEW QUESTION 179

- (Exam Topic 3)

You must create a new entity to support a new feature for an app. Entity data will be transactional and will be associated with business units.

You need to configure entity ownership. Which entity ownership type should you use?

- A. user or team owned
- B. organization-owned
- C. none
- D. business-owned

Answer: A

NEW QUESTION 180

- (Exam Topic 3)

A company has locations in the United States, Brazil, India, and Japan. The company conducts financial transactions in all of these regions.

Financial transactions in Brazil are going to stop, but the office will remain open.

Users must no longer be able to create records associated with the Brazilian currency. Historical records must remain intact

You need to configure Microsoft Dataverse to meet the requirement. What should you do?

- A. Rename the Brazilian currency.
- B. Delete the Brazilian currency record.
- C. Disable the Brazilian language pack
- D. Deactivate the Brazilian currency record.

Answer: D

Explanation:

You can't delete currencies that are in use by other records; you can only deactivate them. Deactivating currency records doesn't remove the currency information stored in existing records, such as opportunities or orders. However, you won't be able to select the deactivated currency for new transactions.

Reference:

<https://docs.microsoft.com/en-us/power-platform/admin/manage-transactions-with-multiple-currencies>

NEW QUESTION 184

- (Exam Topic 3)

You have a canvas app that contains the following text input fields: Id, FirstName, LastName. The app also has a button named Button1.

The OnSelect property for Button1 contains the following expression: Collect(People, {Id:Id.Text, FirstName:FirstName.Text, LastName:LastName.Text})

For each of the following statements, select Yes if the statement is true. Otherwise, select No.

NOTE: Each correct selection is worth one point.

Statement	Yes	No
The People collection is automatically created if it does not already exist.	<input type="radio"/>	<input type="radio"/>
When Button1 is pressed, if a record with the current value of Id.Text already exists in the People collection, the values for FirstName and LastName are updated.	<input type="radio"/>	<input type="radio"/>
If you update the record in the Collection function to include the value from a new field named Age, it will result in an error.	<input type="radio"/>	<input type="radio"/>

- A. Mastered
- B. Not Mastered

Answer: A

Explanation:

Graphical user interface, text, application, email Description automatically generated

Box 1: Yes

If the data source doesn't already exist, a collection is created. Box 2: No

Note: The Collect function adds records to a data source. The items to be added can be:

- > A single value: The value is placed in the Value field of a new record. All other properties are left blank.
- > A record: Each named property is placed in the corresponding property of a new record. All other properties are left blank.
- > A table: Each record of the table is added as a separate record of the data source as described above. The table isn't added as a nested table to a record. To do this, wrap the table in a record first.

Box 3: No Reference:

<https://docs.microsoft.com/en-us/powerapps/maker/canvas-apps/functions/function-clear-collect-clearcollect>

NEW QUESTION 188

- (Exam Topic 3)

You are creating a business rule to implement new business logic.

You must apply the business logic to a canvas app that has a single screen named Screen1. You need to configure the scope for the business rule.

Which scope should you use?

- A. All Forms
- B. Entity
- C. Screen1
- D. Global

Answer: B

Explanation:

Note: Some terminology has changed. Entity is now Table. If you're building a Canvas app, you must use table (entity) as the scope.

Reference:

<https://docs.microsoft.com/en-us/powerapps/maker/common-data-service/data-platform-create-business-rule>

NEW QUESTION 192

- (Exam Topic 3)

Note: This question is part of a series of questions that present the same scenario. Each question in the series contains a unique solution that might meet the stated goals. Some question sets might have more than one correct solution, while others might not have a correct solution.

After you answer a question in this section, you will NOT be able to return to it. As a result, these questions will not appear in the review screen.

You are creating Power Virtual Agents chatbot that captures demographic information about customers. The chatbot must determine the group a customer belongs to based on their age. The age groups are:

- > 0 - 17
- > 18 - 25
- > 26 - 35
- > 36 - 55
- > 55 - 100

You need to configure the chatbot to ask a question that can be used to determine the correct age group. Solution: Use age for Identify in the question and then add branches for each group that use conditional logic.

Does this meet the goal?

- A. Yes
- B. No

Answer: B

Explanation:

Instead, create a custom Age group entity and synonyms for each individual age in the corresponding item. Use Age group for Identify in the question. The prebuilt entities cover commonly used information types, but on some occasions, such as when building a bot that serves a specific purpose, you'll need to teach the bot's language understanding model some domain-specific knowledge. To do this, you need to create a custom entity. Reference:
<https://docs.microsoft.com/en-us/power-virtual-agents/advanced-entities-slot-filling>

NEW QUESTION 195

- (Exam Topic 3)

A company has a custom website.
You need to embed a Power Virtual Agents chatbot into the website.
What should you use?

- A. Webpage URL
- B. Form ID
- C. Bot ID
- D. IFrame

Answer: D

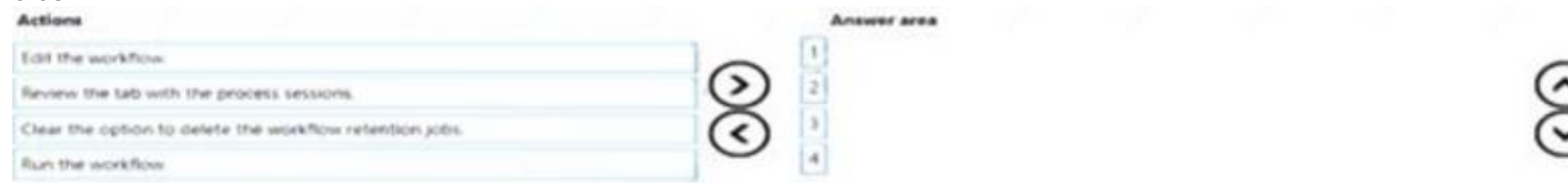
Explanation:

Reference:
<https://docs.microsoft.com/en-us/power-virtual-agents/publication-connect-bot-to-web-channels>

NEW QUESTION 200

- (Exam Topic 3)

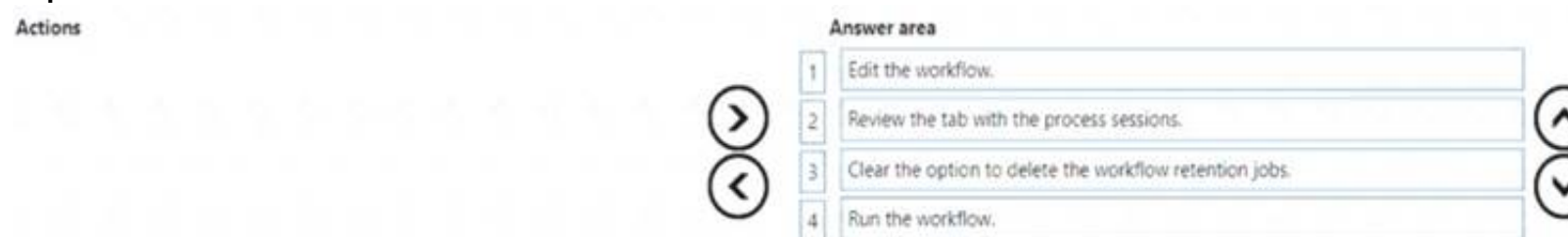
A company uses a model-driven app. The app uses a workflow to send email. Emails are sent to new customers that enter an email address for the first time in the app. Customers report that they do not receive an email after entering an email address. You need to troubleshoot the issue. In which order should you perform the actions? To answer, move the appropriate actions from the list of actions to the answer area and arrange them in the correct order.



- A. Mastered
- B. Not Mastered

Answer: A

Explanation:



NEW QUESTION 203

- (Exam Topic 3)

You have a canvas app that allows users to view, select and purchase products. The app uses a Gallery control to display products and checkboxes that allow users to select products. When users select items from the product catalog, they move to a different screen to complete a purchase. Users must be able to clear all product selections when they click the button. You need to configure the button. What should you do?

- A. Use the Reset (Control) formula and pass the gallery control as a parameter to the Reset formula.
- B. Use the Reload(control) formula and pass the gallery control as parameter to the Reload formula.
- C. Use the ForAll() function to iterate through each item of the Gallery and clear user selections.
- D. Set the OnCheck value to populate a collection and the OnUncheck value to remove the item from the collectio
- E. Clear the collection when the user selects the button.

Answer: D

Explanation:

<https://debajmecrm.com/quick-tip-resetting-controls-inside-gallery-in-canvas-app/>

NEW QUESTION 208

- (Exam Topic 3)

Note: This question is part of a series of questions that present the same scenario. Each question in the series contains a unique solution that might meet the stated goals. Some question sets might have more than one correct solution, while others might not have a correct solution.

After you answer a question in this section, you will NOT be able to return to it. As a result, these questions will not appear in the review screen.

You are a Dynamics 365 Sales administrator for a software company. The sales team wants to attach a large number of supporting documents to customer records, but management does not want to incur the cost of additional storage.

The company does not have any Office 365 application integrations enabled. You need to recommend a storage solution that keeps storage costs low. Solution: Enable OneDrive for Business.

Does this meet the goal?

A. Yes

B. No

Answer: B

NEW QUESTION 210

.....

Relate Links

100% Pass Your PL-200 Exam with Exam Bible Prep Materials

<https://www.exambible.com/PL-200-exam/>

Contact us

We are proud of our high-quality customer service, which serves you around the clock 24/7.

Viste - <https://www.exambible.com/>