

Exam Questions AZ-900

Microsoft Azure Fundamentals

<https://www.2passeasy.com/dumps/AZ-900/>



NEW QUESTION 1

- (Exam Topic 3)
Fill in the blank
(_____) runs application code in Azure without requiring a server.

- A. Mastered
- B. Not Mastered

Answer: A

Explanation:
Azure Functions

NEW QUESTION 2

- (Exam Topic 3)
For each of the following statements, select Yes if the statement is true. Otherwise, select No. NOTE: Each correct selection is worth one point.

Answer Area

Statements	Yes	No
Azure resources can only access other resources in the same resource group.	<input type="radio"/>	<input type="radio"/>
If you delete a resource group, all the resources in the resource group will be deleted.	<input type="radio"/>	<input type="radio"/>
A resource group can contain resources from multiple Azure regions.	<input type="radio"/>	<input type="radio"/>

- A. Mastered
- B. Not Mastered

Answer: A

Explanation:
Answer Area

Statements	Yes	No
Azure resources can only access other resources in the same resource group.	<input type="radio"/>	<input checked="" type="radio"/>
If you delete a resource group, all the resources in the resource group will be deleted.	<input checked="" type="radio"/>	<input type="radio"/>
A resource group can contain resources from multiple Azure regions.	<input checked="" type="radio"/>	<input type="radio"/>

NEW QUESTION 3

- (Exam Topic 3)
Match the Azure storage services to the appropriate descriptions.
To answer, drag the appropriate storage service from the column on the left to its description on the right. Each service may be used once, more than once, or not at all.
NOTE: Each correct match is worth one point.

Storage service

Azure Blob storage

Azure Disk Storage

Azure Files

Azure Queue Storage

Answer Area

Used for reliable messaging between applications

Can be accessed as a network share from a Windows device

Can be configured to use the Archive access tier

- A. Mastered
- B. Not Mastered

Answer: A

Explanation:

Storage service

Azure Blob storage

Azure Disk Storage

Azure Files

Azure Queue Storage

Answer Area

Azure Queue StorageUsed for reliable messaging between applications

Azure FilesCan be accessed as a network share from a Windows device

Azure Blob storageCan be configured to use the Archive access tier

NEW QUESTION 4

- (Exam Topic 3)

You need to compare a company's cloud usage to industry standard best practices. What should you use?

- A. Azure Monitor
- B. Azure Advisor
- C. Application Insights in Azure Monitor
- D. Azure Service Health

Answer: A

NEW QUESTION 5

- (Exam Topic 3)

Match the Azure services to the correct descriptions.

Instructions: To answer, drag the appropriate Azure service from the column on the left to its description on the right. Each service may be used once, more than once, or not at all.

NOTE: Each correct match is worth one point

Azure Services

Azure Machine Learning

Azure IoT Hub

Azure Synapse Analytics

Azure Functions

Answer Area

Provides a cloud-based Enterprise Data Warehouse (EDW).

Uses past trainings to provide predictions that have high probability.

Provides serverless computing functionalities.

Processes data from millions of sensors.

- A. Mastered
- B. Not Mastered

Answer: A

Explanation:

Graphical user interface, text, application Description automatically generated

NEW QUESTION 6

- (Exam Topic 3)

How many copies of data are maintained by an Azure Storage account that uses locally-redundant storage (LRS)?

- A. 3
- B. 4
- C. 6
- D. 9

Answer: A

NEW QUESTION 7

- (Exam Topic 3)

For each of the following statements, select Yes if the statement is true. Otherwise, select No. NOTE: Each correct selection is worth one point.

Statements	Yes	No
A company has complete control of the resources and security for its private cloud.	<input type="radio"/>	<input type="radio"/>
A hybrid cloud solution enables a company to control whether its applications run on-premises or in the cloud.	<input type="radio"/>	<input type="radio"/>
Companies are responsible for capital expenditure when they scale up a virtual machine hosted in a public cloud.	<input type="radio"/>	<input type="radio"/>

- A. Mastered
B. Not Mastered

Answer: A

Explanation:

Graphical user interface, text, application, email Description automatically generated

NEW QUESTION 8

- (Exam Topic 3)

Which service can replace a resource lock automatically if the lock is removed?

- A. Azure Blueprints
B. Azure Information Protection (AIP)
C. Azure Backup
D. Azure Advisor

Answer: B

NEW QUESTION 9

- (Exam Topic 3)

For each of the following statements, select Yes if the statement is true. Otherwise, select No. NOTE Each correct selection is worth one point

Statements	Yes	No
Azure China is operated by Microsoft.	<input type="radio"/>	<input type="radio"/>
Azure Government is operated by Microsoft.	<input type="radio"/>	<input type="radio"/>
Azure Government is available only to US government agencies and their partners.	<input type="radio"/>	<input type="radio"/>

- A. Mastered
B. Not Mastered

Answer: A

Explanation:

Graphical user interface, text, application, email Description automatically generated

NEW QUESTION 10

- (Exam Topic 3)

For each of the following statements, select Yes if the statement is true. Otherwise, select No. NOTE: Each correct selection is worth one point.

Statements	Yes	No
To use Azure Active Directory (Azure AD) credentials to sign in to a computer that runs Windows 10, the computer must be joined to Azure AD.	<input type="radio"/>	<input type="radio"/>
Users in Azure Active Directory (Azure AD) are organized by using resource groups.	<input type="radio"/>	<input type="radio"/>
Azure Active Directory (Azure AD) groups support dynamic membership rules.	<input type="radio"/>	<input type="radio"/>

- A. Mastered
B. Not Mastered

Answer: A

Explanation:

Graphical user interface, text, application Description automatically generated

NEW QUESTION 10

- (Exam Topic 3)
Select the answer that correctly completes the sentence.

Answer Area

A Microsoft SQL Server database that is hosted in the cloud and has software updates managed by Azure

is an example of

disaster recovery as a service (DRaaS).

infrastructure as a service (IaaS).

platform as a service (PaaS).

software as a service (SaaS).

- A. Mastered
- B. Not Mastered

Answer: A

Explanation:

Answer Area

A Microsoft SQL Server database that is hosted in the cloud and has software updates managed by Azure

is an example of

disaster recovery as a service (DRaaS).

infrastructure as a service (IaaS).

platform as a service (PaaS).

software as a service (SaaS).

NEW QUESTION 15

- (Exam Topic 3)
For each of the following statements, select Yes if the statement is true. Otherwise, select No. NOTE: Each correct selection is worth one point.

Statements	Yes	No
The Hot access tier is available for blob data that uses standard storage.	<input type="radio"/>	<input type="radio"/>
The Cool access tier is available for file shares in premium storage.	<input type="radio"/>	<input type="radio"/>
The Cool access tier can be configured at the storage account level.	<input type="radio"/>	<input type="radio"/>

- A. Mastered
- B. Not Mastered

Answer: A

Explanation:

Graphical user interface, text, application Description automatically generated

NEW QUESTION 20

- (Exam Topic 3)
For each of the following statements, select Yes if the statement is true. Otherwise, select No. NOTE: Each correct selection is worth one point.

Statements	Yes	No
You can associate a network security group (NSG) to a virtual network subnet.	<input type="radio"/>	<input type="radio"/>
You can associate a network security group (NSG) to a virtual network.	<input type="radio"/>	<input type="radio"/>
You can associate a network security group (NSG) to a network interface.	<input type="radio"/>	<input type="radio"/>

- A. Mastered
- B. Not Mastered

Answer: A

Explanation:

A picture containing text, indoor, screenshot Description automatically generated

Reference:

https://docs.microsoft.com/en-us/azure/virtual-network/network-security-group-how-it-works

NEW QUESTION 25

- (Exam Topic 3)

To complete the sentence, select the appropriate option in the answer area.

All Azure services that are in public preview are

▼

provided without any documentation

only configurable from Azure CLI

excluded from the Service Level Agreements

only configurable from the Azure portal

- A. Mastered
- B. Not Mastered

Answer: A

Explanation:

Text Description automatically generated

Preview features are made available to you on the condition that you accept additional terms which supplement the regular Azure terms. The supplemental terms state:

PREVIEWS ARE PROVIDED "AS-IS," "WITH ALL FAULTS," AND "AS AVAILABLE," AND ARE EXCLUDED FROM THE SERVICE LEVEL AGREEMENTS AND LIMITED WARRANTY.

Reference:

https://azure.microsoft.com/en-gb/support/legal/preview-supplemental-terms/

NEW QUESTION 30

- (Exam Topic 3)

For each of the following statements, select Yes if the statement is true. Otherwise, select No. NOTE: Each correct selection is worth one point.

Answer Area

Statements	Yes	No
The cost of outbound traffic from Azure is the same for all Azure regions.	<input type="radio"/>	<input type="radio"/>
Purchasing Azure services through an Enterprise Agreement (EA) requires you to spend a predetermined amount.	<input type="radio"/>	<input type="radio"/>
Microsoft defines the pricing structure of all third-party services sold through Azure Marketplace.	<input type="radio"/>	<input type="radio"/>

- A. Mastered
- B. Not Mastered

Answer: A

Explanation:

Answer Area

Statements	Yes	No
The cost of outbound traffic from Azure is the same for all Azure regions.	<input type="radio"/>	<input checked="" type="radio"/>
Purchasing Azure services through an Enterprise Agreement (EA) requires you to spend a predetermined amount.	<input checked="" type="radio"/>	<input type="radio"/>
Microsoft defines the pricing structure of all third-party services sold through Azure Marketplace.	<input checked="" type="radio"/>	<input type="radio"/>

NEW QUESTION 35

- (Exam Topic 3)

What are two benefits of cloud computing? Each correct answer presents a complete solution. NOTE: Each correct selection is worth one point.

- A. enables the rapid provisioning of resources
- B. has increased administrative complexity
- C. has the same configuration options as on-premises
- D. shifts capital expenditures (CAPEX) to operating expenditures (OPEX)

Answer: AD

NEW QUESTION 38

- (Exam Topic 3)
For each of the following statements, select Yes if the statement is true. Otherwise, select No. NOTE: Each correct selection is worth one point.

Statements	Yes	No
The Archive access tier for Azure Storage can be set at the account level.	<input type="radio"/>	<input type="radio"/>
The Cool access tier offers the lowest costs for storing blobs in Azure Storage.	<input type="radio"/>	<input type="radio"/>
After blobs are uploaded to an Azure Storage container, the access tier of the storage account can be changed.	<input type="radio"/>	<input type="radio"/>

- A. Mastered
- B. Not Mastered

Answer: A

Explanation:
Graphical user interface, text, application, email Description automatically generated

NEW QUESTION 42

- (Exam Topic 3)
Select the answer that correctly completes the sentence.

Answer Area

Requiring a user to enter a password and answer a security question when signing-in to Azure Active Directory (Azure AD) is an example of

business-to-customer (B2C) identity services.

managed identities.

multi-factor authentication (MFA).

role-based access control (RBAC).

- A. Mastered
- B. Not Mastered

Answer: A

Explanation:

Answer Area

Requiring a user to enter a password and answer a security question when signing-in to Azure Active Directory (Azure AD) is an example of

business-to-customer (B2C) identity services.

managed identities.

multi-factor authentication (MFA).

role-based access control (RBAC).

NEW QUESTION 46

- (Exam Topic 3)
Select the answer that correctly completes the sentence.

Answer Area

To save on the costs of an unused Azure virtual machine that runs Windows 10, you should

shut down the virtual machine from a Remote Desktop session.

disconnect the virtual machine during a Remote Desktop session.

put the virtual machine in sleep mode from a Remote Desktop session.

select Stop for the virtual machine from the Azure portal.

shut down the virtual machine from a Remote Desktop session.

- A. Mastered
- B. Not Mastered

Answer: A

Explanation:

Answer Area

To save on the costs of an unused Azure virtual machine that runs Windows 10, you should

- shut down the virtual machine from a Remote Desktop session.
- disconnect the virtual machine during a Remote Desktop session.
- put the virtual machine in sleep mode from a Remote Desktop session.
- select Stop for the virtual machine from the Azure portal.

shut down the virtual machine from a Remote Desktop session.

NEW QUESTION 51

- (Exam Topic 3)

Fill in the blank

If an Azure virtual machine has a status of Stopped (deallocated), you will continue to pay for (_____)

- A. Mastered
- B. Not Mastered

Answer: A

Explanation:

storage.

NEW QUESTION 55

- (Exam Topic 3)

What should you use to prevent traffic from an Azure virtual network from being routed to an Azure Storage account via the internet?

- A. a public endpoint
- B. Azure VPN Gateway
- C. a service endpoint
- D. a network security group (NSG)

Answer: D

NEW QUESTION 58

- (Exam Topic 3)

Select the answer that correctly completes the sentence.

Answer Area

After you create a virtual machine, you need to modify the _____ to allow connections to TCP port 8080 on the virtual machine.

- network security group (NSG)
- virtual network gateway
- virtual network
- route table

- A. Mastered
- B. Not Mastered

Answer: A

Explanation:

Answer Area

After you create a virtual machine, you need to modify the _____ to allow connections to TCP port 8080 on the virtual machine.

- network security group (NSG)
- virtual network gateway
- virtual network
- route table

NEW QUESTION 60

- (Exam Topic 3)

Select the answer that correctly completes the sentence.

Answer Area

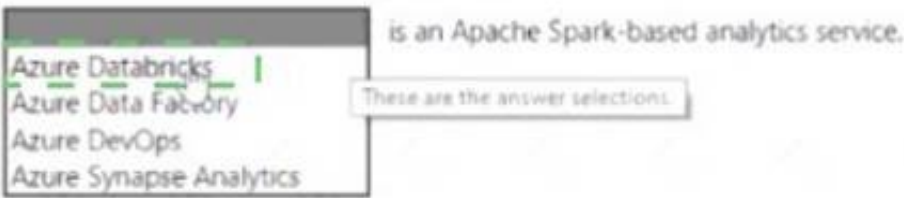
- Azure Databricks
 - Azure Data Factory
 - Azure DevOps
 - Azure Synapse Analytics
- is an Apache Spark-based analytics service.
- These are the answer selections.

- A. Mastered
- B. Not Mastered

Answer: A

Explanation:

Answer Area



NEW QUESTION 64

- (Exam Topic 3)

Select the answer that correctly completes the sentence.

Answer Area

You have an Azure virtual network named VNET1 in a resource group named RG1.

You assign the Azure Policy definition of Not Allowed Resource Type and specify that virtual networks are not an allowed resource type in RG1. VNET1

is deleted automatically.

is moved automatically to another resource group.

continues to function normally.

is now a read-only object.

- A. Mastered
- B. Not Mastered

Answer: A

Explanation:

Answer Area

You have an Azure virtual network named VNET1 in a resource group named RG1.

You assign the Azure Policy definition of Not Allowed Resource Type and specify that virtual networks are not an allowed resource type in RG1. VNET1

is deleted automatically.

is moved automatically to another resource group.

continues to function normally.

is now a read-only object.

NEW QUESTION 67

- (Exam Topic 3)

For each of the following statements, select Yes if the statement is true. Otherwise, select No. NOTE: Each correct selection is worth one point.

Statements	Yes	No
An Azure Virtual Desktop session host can run Windows 10 or Windows 11 only.	<input type="radio"/>	<input type="radio"/>
An Azure Virtual Desktop host pool that includes 20 session hosts supports a maximum of 20 simultaneous user connections.	<input type="radio"/>	<input type="radio"/>
Azure Virtual Desktop supports desktop and app virtualization.	<input type="radio"/>	<input type="radio"/>

- A. Mastered
- B. Not Mastered

Answer: A

Explanation:

Graphical user interface, text, application, email Description automatically generated

NEW QUESTION 72

- (Exam Topic 3)

Match The cloud service models to the appropriate offerings.

To answer drag the appropriate model from the column on the left to its offering on the right. Each model may be used once, more than once, or not at all.

NOTE Each correct match is worth one point.

Models	Answer Area
Infrastructure as a service (IaaS)	Model Azure App Service
Platform as a service (PaaS)	Model Azure virtual machines
Software as a service (SaaS)	Model Microsoft Dynamics 365

- A. Mastered
- B. Not Mastered

Answer: A

Explanation:

Models	Answer Area
Infrastructure as a service (IaaS)	Platform as a service (PaaS) Azure App Service
Platform as a service (PaaS)	Infrastructure as a service (IaaS) Azure virtual machines
Software as a service (SaaS)	Software as a service (SaaS) Microsoft Dynamics 365

NEW QUESTION 77

- (Exam Topic 3)

You have an accounting application named App1 that uses a legacy database. You plan to move App1 to the cloud. Which service model should you use?

- A. software as a service (SaaS)
- B. infrastructure as a service (IaaS)
- C. platform as a service (PaaS)

Answer: B

NEW QUESTION 82

- (Exam Topic 3)

For each of the following statements, select Yes if the statement is true. Otherwise, select No. NOTE: Each correct selection is worth one point.

Statements	Yes	No
Cloud computing provides elastic scalability.	<input type="radio"/>	<input type="radio"/>
Customers can minimize capital expenditure (CapEx) by using a public cloud.	<input type="radio"/>	<input type="radio"/>
Cloud computing leverages virtualization to provide services to multiple customers simultaneously.	<input type="radio"/>	<input type="radio"/>

- A. Mastered
- B. Not Mastered

Answer: A

Explanation:

Statements	Yes	No
Cloud computing provides elastic scalability.	<input checked="" type="radio"/>	<input type="radio"/>
Customers can minimize capital expenditure (CapEx) by using a public cloud.	<input type="radio"/>	<input checked="" type="radio"/>
Cloud computing leverages virtualization to provide services to multiple customers simultaneously.	<input checked="" type="radio"/>	<input type="radio"/>

NEW QUESTION 83

- (Exam Topic 3)

Your company has an Azure subscription that contains several resources.

You need to identify which department is responsible for the cost of each resource. What should you use?

- A. tags
- B. alerts
- C. budgets

Answer: C

NEW QUESTION 88

- (Exam Topic 3)

For each of the following statements, select Yes if the statement is true. Otherwise, select No. NOTE: Each correct selection is worth one point.

Answer Area

Statements	Yes	No
You can create Group Policies in Azure AD.	<input type="radio"/>	<input type="radio"/>
You can join Windows 10 devices to Azure AD.	<input type="radio"/>	<input type="radio"/>
You can join Android devices to Azure AD.	<input type="radio"/>	<input type="radio"/>

- A. Mastered
- B. Not Mastered

Answer: A

Explanation:

Answer Area

Statements	Yes	No
You can create Group Policies in Azure AD.	<input checked="" type="radio"/>	<input type="radio"/>
You can join Windows 10 devices to Azure AD.	<input checked="" type="radio"/>	<input type="radio"/>
You can join Android devices to Azure AD.	<input type="radio"/>	<input checked="" type="radio"/>

NEW QUESTION 92

- (Exam Topic 3)

Match the Azure governance feature to the correct description.

Instructions: To answer, drag the appropriate feature from the column on the left to its description on the right. Each feature may be used once, more than once, or not at all.

NOTE: Each correct match is worth one point.

Features	Answer Area
<div>Azure Blueprints</div>	<div></div> Restrict which virtual machine types can be created in a subscription
<div>Azure Policy</div>	<div></div> Identify Azure resources that are assooated with specific cost centers
<div>Azure resource locks</div>	<div></div> Deploy a complete Azure application environment including resources configuration and role assignments
<div>Azure tags</div>	

- A. Mastered
- B. Not Mastered

Answer: A

Explanation:

Text Description automatically generated

NEW QUESTION 94

- (Exam Topic 3)

For each of the following statements, select Yes if the statement is true, Otherwise, select No. NOTE: Each correct selection is worth one point.

Statements	Yes	No
Single sign-on (SSO) requires that all users sign in by using the Microsoft Authenticator app.	<input type="radio"/>	<input type="radio"/>
Authentication is the process of establishing which level of access an authenticated user or service has.	<input type="radio"/>	<input type="radio"/>
Conditional Access uses signals collected from a user during the sign-in process to decide whether to allow or deny access requests.	<input type="radio"/>	<input type="radio"/>

- A. Mastered
- B. Not Mastered

Answer: A

Explanation:

Graphical user interface, text, application Description automatically generated

NEW QUESTION 99

- (Exam Topic 3)

Select the answer that correctly completes the sentence.

Answer Area

Azure China

is operated by Microsoft.

has feature parity with Azure global.

services can be accessed from China only.

is a distinct separate instance of Microsoft Azure.

Answer selections

- A. Mastered
- B. Not Mastered

Answer: A

Explanation:

Answer Area

Azure China

is operated by Microsoft.

has feature parity with Azure global.

services can be accessed from China only.

is a distinct separate instance of Microsoft Azure.

Answer selections

NEW QUESTION 103

- (Exam Topic 3)

What is the longest term you can purchase for Azure Reserved VM Instances?

- A. three years
- B. four years
- C. one year
- D. five years

Answer: A

NEW QUESTION 104

- (Exam Topic 3)

You need to manage containers.

Which two services can you use? Each correct answer presents a complete solution, NOTE: Each correct selection is worth one point.

- A. Azure Virtual Desktop
- B. Azure virtual machines
- C. Azure Functions
- D. Azure Kubernetes Service (AKS)
- E. Azure Container Instances

Answer: DE

NEW QUESTION 109

- (Exam Topic 3)

For each of the following statements, select Yes if the statement is true. Otherwise, select No. NOTE: Each correct selection is worth one point.

Statements	Yes	No
You must install Azure Cloud Shell on your computer before you can use it.	<input type="radio"/>	<input type="radio"/>
The Azure Command-Line Interface (CLI) is installed by default in Windows 11.	<input type="radio"/>	<input type="radio"/>
Azure PowerShell can be used on computers that run Windows, Linux, or macOS.	<input type="radio"/>	<input type="radio"/>

- A. Mastered
B. Not Mastered

Answer: A

Explanation:
NO NO YES

NEW QUESTION 113

- (Exam Topic 3)

Select the answer that correctly completes the sentence.

Azure Blob Storage is a

data store for queuing and reliably delivering messages between applications.

file share that can be mapped as a network drive.

key/attribute store for non-relational, structured data.

storage service optimized for very large objects, such as video files and bitmaps.

- A. Mastered
B. Not Mastered

Answer: A

Explanation:

Azure Blob Storage is a

data store for queuing and reliably delivering messages between applications.

file share that can be mapped as a network drive.

key/attribute store for non-relational, structured data.

storage service optimized for very large objects, such as video files and bitmaps.

NEW QUESTION 117

- (Exam Topic 2)

Your Azure environment contains multiple Azure virtual machines.

You need to ensure that a virtual machine named VM1 is accessible from the Internet over HTTP. What are two possible solutions? Each correct answer presents a complete solution.

- A. Modify a DDoS protection plan.
B. Modify an Azure firewall.
C. Modify an Azure Traffic Manager profile.
D. Modify a network security group (NGS)

Answer: BD

NEW QUESTION 120

- (Exam Topic 2)

You plan to provision Infrastructure as a Service (IaaS) resources in Azure. Which resource is an example of IaaS?

- A. an Azure web app
B. an Azure virtual machine
C. an Azure logic app
D. an Azure SQL database

Answer: B

Explanation:

An Azure virtual machine is an example of Infrastructure as a Service (IaaS).

Azure web app, Azure logic app and Azure SQL database are all examples of Platform as a Service (Paas). <https://azure.microsoft.com/en-gb/overview/what-is->

iaas/
<https://azure.microsoft.com/en-gb/overview/what-is-paas/>

NEW QUESTION 122

- (Exam Topic 3)

Select the answer that correctly completes the sentence.

Answer Area

An Azure region

<p>contains one or more data centers that are connected by using a low-latency network.</p> <p>is found in each country where Microsoft has a subsidiary office.</p> <p>can be found in every country in Europe and the Americas only.</p> <p>contains one or more data centers that are connected by using a high-latency network.</p>

- A. Mastered
B. Not Mastered

Answer: A

Explanation:

Answer Area

An Azure region

<p>contains one or more data centers that are connected by using a low-latency network.</p> <p>is found in each country where Microsoft has a subsidiary office.</p> <p>can be found in every country in Europe and the Americas only.</p> <p>contains one or more data centers that are connected by using a high-latency network.</p>

NEW QUESTION 125

- (Exam Topic 2)

To complete the sentence, select the appropriate option in the answer area.

Data that is stored in the Archive access tier of an Azure Storage account

<p>can be accessed at any time by using azcopy.exe.</p> <p>can only be read by using Azure Backup.</p> <p>must be restored before the data can be accessed.</p> <p>must be rehydrated before the data can be accessed.</p>
--

- A. Mastered
B. Not Mastered

Answer: A

Explanation:

Azure storage offers different access tiers: hot, cool and archive.

The archive access tier has the lowest storage cost. But it has higher data retrieval costs compared to the hot and cool tiers. Data in the archive tier can take several hours to retrieve.

While a blob is in archive storage, the blob data is offline and can't be read, overwritten, or modified. To read or download a blob in archive, you must first rehydrate it to an online tier.

Example usage scenarios for the archive access tier include:

- Long-term backup, secondary backup, and archival datasets
- Compliance and archival data that needs to be stored for a long time and is hardly ever accessed.

Reference:

<https://docs.microsoft.com/en-us/azure/storage/blobs/storage-blob-storage-tiers?tabs=azure-portal#archive-access>

NEW QUESTION 128

- (Exam Topic 2)

For each of the following statements, select Yes if the statement is true. Otherwise, select No. NOTE: Each correct selection is worth one point.

Statements	Yes	No
An Azure subscription can be associated to multiple Azure Active Directory (Azure AD) tenants.	<input type="radio"/>	<input type="radio"/>
You can change the Azure Active Directory (Azure AD) tenant to which an Azure subscription is associated.	<input type="radio"/>	<input type="radio"/>
When an Azure subscription expires, the associated Azure Active Directory (Azure AD) tenant is deleted automatically.	<input type="radio"/>	<input type="radio"/>

- A. Mastered
B. Not Mastered

Answer: A

Explanation:

Box 1: No

An Azure AD tenant can have multiple subscriptions but an Azure subscription can only be associated with one Azure AD tenant.

Box 2: Yes

Box 3: No

If your subscription expires, you lose access to all the other resources associated with the subscription. However, the Azure AD directory remains in Azure. You can associate and manage the directory using a different Azure subscription.

References:

<https://docs.microsoft.com/en-us/azure/active-directory/fundamentals/active-directory-how-subscriptions-associ>

NEW QUESTION 133

- (Exam Topic 2)

For each of the following statements, select Yes if the statement is true. Otherwise, select No. NOTE: Each correct selection is worth one point.

Statements	Yes	No
An Azure resource can have multiple Delete locks.	<input type="radio"/>	<input type="radio"/>
An Azure resource inherits locks from its resource group.	<input type="radio"/>	<input type="radio"/>
If an Azure resource has a Read-only lock, you can add a Delete lock to the resource.	<input type="radio"/>	<input type="radio"/>

- A. Mastered
B. Not Mastered

Answer: A

Explanation:

References:

<https://docs.microsoft.com/en-us/azure/azure-resource-manager/management/lock-resources>

NEW QUESTION 137

- (Exam Topic 2)

For each of the following statements, select Yes if the statement is true. Otherwise, select No. NOTE: Each correct selection is worth one point.

Answer Area

Statements	Yes	No
Azure resources can only access other resources in the same resource group.	<input type="radio"/>	<input type="radio"/>
If you delete a resource group, all the resources in the resource group will be deleted.	<input type="radio"/>	<input type="radio"/>

- A. Mastered

B. Not Mastered

Answer: A

Explanation:

Answer Area

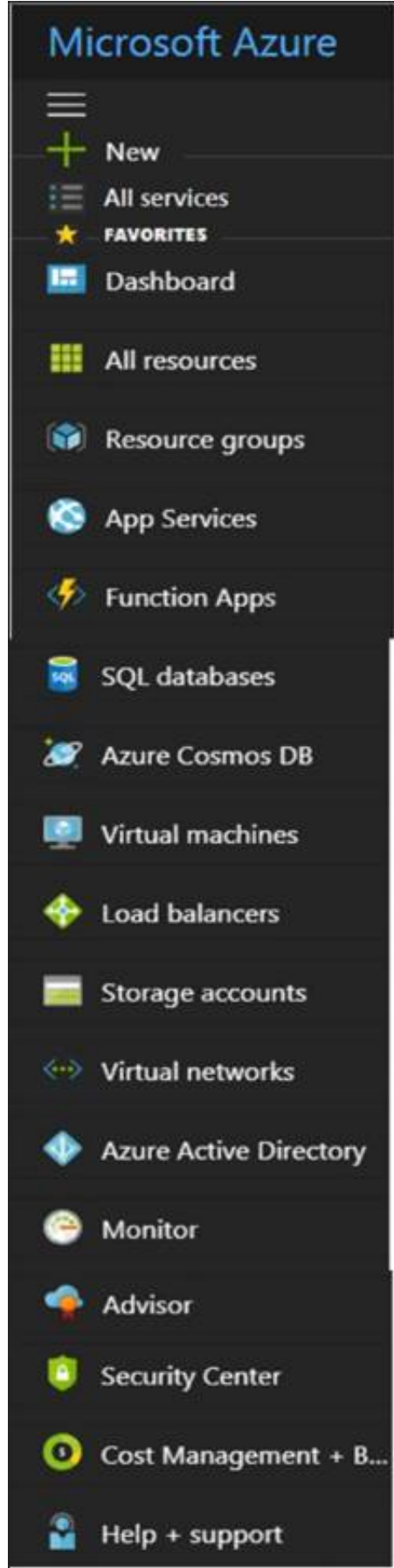
Statements	Yes	No
Azure resources can only access other resources in the same resource group.	<input type="radio"/>	<input checked="" type="radio"/>
If you delete a resource group, all the resources in the resource group will be deleted.	<input checked="" type="radio"/>	<input type="radio"/>

NEW QUESTION 140

- (Exam Topic 2)

You need to request that Microsoft increase a subscription quota limit for your company.

Which blade should you use from the Azure portal? To answer, select the appropriate blade in the answer area.



A. Mastered

B. Not Mastered

Answer: A

Explanation:

References:
https://docs.microsoft.com/en-us/azure/azure-portal/supportability/per-vm-quota-requests

NEW QUESTION 142

- (Exam Topic 2)

To complete the sentence, select the appropriate option in the answer area.

You deploy an Azure resource. The resource becomes unavailable for an extended period due to a service outage.

Microsoft will

refund your bank account.

migrate the resource to another subscription.

credit your Azure account.

send you a coupon code that you can redeem for Azure credits.

- A. Mastered
- B. Not Mastered

Answer: A

Explanation:

You deploy an Azure resource. The resource becomes unavailable for an extended period due to a service outage.

Microsoft will

refund your bank account.

migrate the resource to another subscription.

credit your Azure account.

send you a coupon code that you can redeem for Azure credits.

NEW QUESTION 144

- (Exam Topic 2)

This question requires that you evaluate the BOLD text to determine if it is correct.

The Azure Standard support plan is the lowest cost option to receive 24x7 access to support engineers by phone.

Instructions: Review the underlined text. If it makes the statement correct, select “No change is needed”. If the statement is incorrect, select the answer choice that makes the statement correct.

- A. No change is needed
- B. Developer
- C. Basic
- D. Professional Direct

Answer: C

Explanation:

The Basic support plan is free so is therefore the cheapest. The Developer support plan is the cheapest paid-for support plan. The order of support plans in terms of cost ranging from the cheapest to most expensive is: Basic, Developer, Standard, Professional Direct, Premier.

References:
https://azure.microsoft.com/en-gb/support/plans/

NEW QUESTION 148

- (Exam Topic 2)

Match the Azure service to the correct description.

Instructions: To answer, drag the appropriate Azure service from the column on the left to its description on the right. Each service may be used once, more than once, or not at all

NOTE: Each correct match is worth one point.

Answer Options

Azure Machine Learning

Azure IoT Hub

Azure Bot Services

Azure Functions

Answer Area

Provides a digital online assistant that provides speech support

Uses past trainings to provide predictions that have high probability

Provides serverless computing functionalities

Processes data from millions of sensors

- A. Mastered
- B. Not Mastered

Answer: A

Explanation:

Answer Options

Azure Machine Learning	Azure IoT Hub
Azure Bot Services	Azure Functions

Answer Area

Azure Bot Services	Provides a digital online assistant that provides speech support
Azure Machine Learning	Uses past trainings to provide predictions that have high probability
Azure Functions	Provides serverless computing functionalities
Azure IoT Hub	Processes data from millions of sensors

NEW QUESTION 149

- (Exam Topic 2)

Your company has a Software Assurance agreement that includes Microsoft SQL Server licenses. You plan to deploy SQL Server on Azure virtual machines. What should you do to minimize licensing costs for the deployment?

- A. Use Azure reservations.
- B. Use Azure Hybrid Benefit
- C. Deallocate the virtual machines during off hours.
- D. Configure Azure Cost Management budgets.

Answer: B

NEW QUESTION 152

- (Exam Topic 2)

To complete the sentence, select the appropriate option in the answer area.

From

Azure Control IAM, Azure Event Hubs, Azure Activity Log, Azure Service Health.

 you can view which user turned off a specific virtual machine during the last 14 days.

- A. Mastered
- B. Not Mastered

Answer: A

Explanation:

From

Azure Control IAM, <u>Azure Event Hubs</u> , <u>Azure Activity Log</u> , Azure Service Health.

 you can view which user turned off a specific virtual machine during the last 14 days.

NEW QUESTION 156

- (Exam Topic 2)

What can you use to automatically send an alert if an administrator stops an Azure virtual machine?

- A. Azure Advisor
- B. Azure Service Health
- C. Azure Monitor
- D. Azure Network Watcher

Answer: C

Explanation:

Reference:

<https://docs.microsoft.com/en-us/azure/azure-monitor/insights/vminsights-alerts>

NEW QUESTION 159

- (Exam Topic 2)

This question requires that you evaluate the Bold text to determine if it is correct.

From Azure Cloud Shell, you can track your company's regulatory standards and regulations, such as ISO 27001.

Instructions: Review the underlined text. If it makes the statement correct, select "No change is needed." If the statement is incorrect, select the answer choice that makes the statement correct.

- A. No change is needed.
- B. the Microsoft Cloud Partner Portal
- C. Compliance Manager
- D. the Trust Center

Answer: C

Explanation:

Microsoft Compliance Manager (Preview) is a free workflow-based risk assessment tool that lets you track, assign, and verify regulatory compliance activities related to Microsoft cloud services. Azure Cloud Shell, on the other hand, is an interactive, authenticated, browser-accessible shell for managing Azure resources.
References:
<https://docs.microsoft.com/en-us/microsoft-365/compliance/compliance-manager-overview> <https://docs.microsoft.com/en-us/azure/cloud-shell/overview>

NEW QUESTION 164

- (Exam Topic 2)
For each of the following statements, select Yes if the statement is true. Otherwise, select No.
NOTE: Each correct selection is worth one point.

Answer Area

Statements	Yes	No
Availability zones can be implemented in all Azure regions.	<input type="radio"/>	<input type="radio"/>
Only virtual machines that run Windows Server can be created in availability zones.	<input type="radio"/>	<input type="radio"/>
Availability zones are used to replicate data and applications to multiple regions.	<input type="radio"/>	<input type="radio"/>

- A. Mastered
- B. Not Mastered

Answer: A

Explanation:

Answer Area

Statements	Yes	No
Availability zones can be implemented in all Azure regions.	<input type="radio"/>	<input checked="" type="radio"/>
Only virtual machines that run Windows Server can be created in availability zones.	<input type="radio"/>	<input checked="" type="radio"/>
Availability zones are used to replicate data and applications to multiple regions.	<input type="radio"/>	<input checked="" type="radio"/>

NEW QUESTION 169

- (Exam Topic 2)
For each of the following statements, select Yes if the statement is true. Otherwise, select No. NOTE: Each correct selection is worth one point.

Statements	Yes	No
Data that is copied to an Azure Storage account is maintained automatically in at least three copies.	<input type="radio"/>	<input type="radio"/>
All data that is copied to an Azure Storage account is backed up automatically to another Azure data center.	<input type="radio"/>	<input type="radio"/>
An Azure Storage account can contain up to 2 TB of data and up to one million files.	<input type="radio"/>	<input type="radio"/>

- A. Mastered
- B. Not Mastered

Answer: A

Explanation:

Box 1: Yes
There are different replication options available with a storage account. The ‘minimum’ replication option is Locally Redundant Storage (LRS). With LRS, data is replicated synchronously three times within the primary region.
Box 2: No
Data is not backed up automatically to another Azure Data Center although it can be depending on the replication option configured for the account. Locally Redundant Storage (LRS) is the default which maintains three copies of the data in the data center. Geo-redundant storage (GRS) has cross-regional replication to protect against regional outages. Data is replicated synchronously three times in the primary region, then replicated asynchronously to the secondary region.
Box 3: No
The limits are much higher than that. The current storage limit is 2 PB for US and Europe, and 500 TB for all other regions (including the UK) with no limit on the number of files.
References:
<https://docs.microsoft.com/en-us/azure/storage/common/storage-account-overview>

NEW QUESTION 173

- (Exam Topic 2)
Which Azure service provides a set of version control tools to manage code?

- A. Azure Repos
- B. Azure DevTest Labs
- C. Azure Storage
- D. Azure Cosmos DB

Answer: A

Explanation:
Azure Repos is a set of version control tools that you can use to manage your code.

NEW QUESTION 177

- (Exam Topic 2)
To complete the sentence, select the appropriate option in the answer area.

Authorization

Authentication

Federation

Ticketing

is the process of verifying a user's credentials.

- A. Mastered
- B. Not Mastered

Answer: A

Explanation:

Authorization

Authentication

Federation

Ticketing

is the process of verifying a user's credentials.

NEW QUESTION 182

- (Exam Topic 2)
For each of the following statements, select Yes if the statement is true. Otherwise, select No. NOTE: Each correct selection is worth one point.

Statements	Yes	No
Building a data center infrastructure is an example of operational expenditure (OpEx) costs.	<input type="radio"/>	<input type="radio"/>
Monthly salaries for technical personnel are an example of operational expenditure (OpEx) costs.	<input type="radio"/>	<input type="radio"/>
Leasing software is an example of operational expenditure (OpEx) costs.	<input type="radio"/>	<input type="radio"/>

- A. Mastered
- B. Not Mastered

Answer: A

Explanation:
Box 1: No
Building a data center infrastructure is capital expenditure, not operation expenditure. Box 2: Yes
OpEx is ongoing costs (costs of operations) such as staff salaries. Box 2: Yes
OpEx is ongoing costs (costs of operations) such as leasing software. If you purchased software as a one-off purchase, that would be CapEx, but leasing software is ongoing so it's OpEx.

NEW QUESTION 187

- (Exam Topic 2)
To complete the sentence, select the appropriate option in the answer area.

Azure Site Recovery provides

▼

fault tolerance

disaster recovery

elasticity

high availability

for virtual machines.

- A. Mastered
- B. Not Mastered

Answer: A

Explanation:
Azure Site Recovery helps ensure business continuity by keeping business apps and workloads running during outages. Site Recovery replicates workloads running on physical and virtual machines (VMs) from a primary site to a secondary location.
Reference:
<https://docs.microsoft.com/en-us/azure/site-recovery/site-recovery-overview>

NEW QUESTION 192

- (Exam Topic 2)
For each of the following statements, select Yes if the statement is true. Otherwise, select No. NOTE: Each correct selection is worth one point.

Statements	Yes	No
A platform as a service (PaaS) solution that hosts web apps in Azure provides full control of the operating systems that host applications.	<input type="radio"/>	<input type="radio"/>
A Platform as a Service (PaaS) solution that hosts web apps in Azure can be provided with additional memory by changing the pricing tier.	<input type="radio"/>	<input type="radio"/>
A Platform as a Service (PaaS) solution that hosts web apps in Azure can be configured to automatically scale the number of instances based on demand.	<input type="radio"/>	<input type="radio"/>

- A. Mastered
- B. Not Mastered

Answer: A

Explanation:
Box 1: No
A PaaS solution does not provide access to the operating system. The Azure Web Apps service provides an environment for you to host your web applications. Behind the scenes, the web apps are hosted on virtual machines running IIS. However, you have no direct access to the virtual machine, the operating system or IIS.
Box 2: Yes
Box 3: Yes
A PaaS solution that hosts web apps in Azure does provide the ability to scale the platform automatically. This is known as autoscaling. Behind the scenes, the web apps are hosted on virtual machines running IIS. Autoscaling means adding more load balanced virtual machines to host the web apps.
References:
<https://azure.microsoft.com/en-gb/overview/what-is-paas/>

NEW QUESTION 195

- (Exam Topic 2)
This question requires that you evaluate the underlined text to determine if it is correct.
You have an application that is comprised of an Azure web app that has a Service Level Agreement (SLA) of 99.95 percent and an Azure SQL database that has an SLA of 99.99 percent.
The composite SLA for the application is the product of both SLAs. which equals 99.94 percent.
Instructions: Review the underlined text. If it makes the statement correct, select "No change is needed." If the statement is incorrect, select the answer choice that makes the statement correct.

- A. No change is needed.
- B. the lowest SLA associated to the application, which is 99.95 percent
- C. the highest SLA associated to the application, which is 99.99 percent
- D. the difference between the two SLAs, which is 0.05 percent

Answer: A

NEW QUESTION 199

- (Exam Topic 2)

For each of the following statements, select Yes if the statement is true. Otherwise, select No. NOTE: Each correct selection is worth one point.

Statements	Yes	No
All the Azure resources deployed to a resource group must use the same Azure region.	<input type="radio"/>	<input type="radio"/>
If you assign a tag to a resource group, all the Azure resources in that resource group are assigned to the same tag.	<input type="radio"/>	<input type="radio"/>
If you assign permissions for a user to manage a resource group, the user can manage all the Azure resources in that resource group.	<input type="radio"/>	<input type="radio"/>

- A. Mastered
- B. Not Mastered

Answer: A

Explanation:

Statements	Yes	No
All the Azure resources deployed to a resource group must use the same Azure region.	<input type="radio"/>	<input checked="" type="radio"/>
If you assign a tag to a resource group, all the Azure resources in that resource group are assigned to the same tag.	<input type="radio"/>	<input checked="" type="radio"/>
If you assign permissions for a user to manage a resource group, the user can manage all the Azure resources in that resource group.	<input checked="" type="radio"/>	<input type="radio"/>

NEW QUESTION 204

- (Exam Topic 2)

For each of the following statements, select Yes if the statement is true. Otherwise, select No. NOTE: Each correct selection is worth one point.

Statements	Yes	No
Each Azure subscription can contain multiple account administrators.	<input type="radio"/>	<input type="radio"/>
Each Azure subscription can be managed by using a Microsoft account only.	<input type="radio"/>	<input type="radio"/>
An Azure resource group contains multiple Azure subscriptions.	<input type="radio"/>	<input type="radio"/>

- A. Mastered
- B. Not Mastered

Answer: A

Explanation:

Box 1: Yes

You can assign additional account administrators in the Azure Portal. Box 2: No

You need an Azure Active Directory account to manage a subscription, not a Microsoft account.

An account is created in the Azure Active Directory when you create the subscription. Further accounts can be created in the Azure Active Directory to manage the subscription.

Box 3: No

Resource groups are logical containers for Azure resources. However, resource groups do not contain subscriptions. Subscriptions contain resource groups.

References:

<https://docs.microsoft.com/en-us/office365/enterprise/subscriptions-licenses-accounts-and-tenants-for-microsoft>

NEW QUESTION 208

- (Exam Topic 2)

In which type of cloud model are all the hardware resources owned by a third-party and shared between multiple tenants?

- A. private
- B. hybrid
- C. public

Answer: C

Explanation:

Microsoft Azure, Amazon Web Services and Google Cloud are three examples of public cloud services. Microsoft, Amazon and Google own the hardware. The tenants are the customers who use the public cloud services.

NEW QUESTION 213

- (Exam Topic 2)

You have an Azure environment.

You need to create a new Azure virtual machine from a tablet that runs the Android operating system. What are three possible solutions? Each correct answer presents a complete solution.

NOTE: Each correct selection is worth one point.

- A. Use Bash in Azure Cloud Shell.
- B. Use PowerShell in Azure Cloud Shell.
- C. Use the PowerApps portal.
- D. Use the Security & Compliance admin center.
- E. Use the Azure portal.

Answer: ABE

Explanation:

The Android tablet device will have a web browser (Chrome). That's enough to connect to the Azure portal.

The Azure portal offers three ways to create a VM:

- Using the graphical portal.
- Using the Azure Cloud Shell using Bash.
- Using the Azure Cloud Shell using PowerShell.

NEW QUESTION 215

- (Exam Topic 2)

To complete the sentence, select the appropriate option in the answer area.

An Availability Zone in Azure has physically separate locations

across two continents.
within a single Azure region.
within multiple Azure regions.
within a single Azure datacenter.

- A. Mastered
- B. Not Mastered

Answer: A

Explanation:

Text Description automatically generated with medium confidence

Availability Zones is a high-availability offering that protects your applications and data from datacenter failures. Availability Zones are unique physical locations within an Azure region.

Reference:

<https://docs.microsoft.com/en-us/azure/availability-zones/az-overview>

NEW QUESTION 217

- (Exam Topic 2)

What can you use to identify underutilized or unused Azure virtual machines?

- A. Azure Advisor
- B. Azure Cost Management + Billing
- C. Azure reservations
- D. Azure Policy

Answer: A

NEW QUESTION 220

- (Exam Topic 2)

Which statement accurately describes the Modern Lifecycle Policy for Azure services?

- A. Microsoft provides mainstream support for a service for five years.
- B. Microsoft provides a minimum of 12 months' notice before ending support for a service.
- C. After a service is made generally available, Microsoft provides support for the service for a minimum of four years.
- D. When a service is retired, you can purchase extended support for the service for up to five years.

Answer: B

Explanation:

For products governed by the Modern Lifecycle Policy, Microsoft will provide a minimum of 12 months' notification prior to ending support if no successor product or service is offered—excluding free services or preview releases.

References:

<https://support.microsoft.com/en-us/help/30881/modern-lifecycle-policy>

NEW QUESTION 225

- (Exam Topic 2)

To complete the sentence, select the appropriate option in the answer area.

After you create a virtual machine, you need to modify the _____
to allow connections to TCP port 8080 on the virtual machine.

network security group (NSG)
virtual network gateway
virtual network
route table

- A. Mastered
- B. Not Mastered

Answer: A

Explanation:

After you create a virtual machine, you need to modify the _____
to allow connections to TCP port 8080 on the virtual machine.

network security group (NSG)
virtual network gateway
virtual network
route table

NEW QUESTION 228

- (Exam Topic 2)

To complete the sentence, select the appropriate option in the answer area.

Data that is stored in the Archive access tier of an Azure Storage account _____

can be accessed at any time by using azcopy.exe.
can only be read by using Azure Backup.
must be restored before the data can be accessed.
must be rehydrated before the data can be accessed.

- A. Mastered
- B. Not Mastered

Answer: A

Explanation:

Data that is stored in the Archive access tier of an Azure Storage account _____

can be accessed at any time by using azcopy.exe.
can only be read by using Azure Backup.
must be restored before the data can be accessed.
must be rehydrated before the data can be accessed.

NEW QUESTION 233

- (Exam Topic 2)

For each of the following statements, select Yes if the statement is true. Otherwise, select No. NOTE: Each correct selection is worth one point.

Statements	Yes	No
By creating additional resource groups in an Azure subscription, additional costs are incurred.	<input type="radio"/>	<input type="radio"/>
By copying several gigabits of data to Azure from an on-premises network over a VPN, additional data transfer costs are incurred.	<input type="radio"/>	<input type="radio"/>
By copying several GB of data from Azure to an on-premises network over a VPN, additional data transfer costs are incurred.	<input type="radio"/>	<input type="radio"/>

- A. Mastered
- B. Not Mastered

Answer: A

Explanation:

Box 1: No

Resource groups are logical containers for Azure resources. You do not pay for resource groups. Box 2: Yes

Data ingress over a VPN is data 'coming in' to Azure over the VPN. You are charged data transfer costs for data ingress.

Box 3: No

Data egress over a VPN is data 'going out' of Azure over the VPN. You are not charged for data egress. References:

<https://docs.microsoft.com/en-us/azure/azure-resource-manager/manage-resource-groups-portal> <https://azure.microsoft.com/en-us/pricing/details/bandwidth/>

NEW QUESTION 234

- (Exam Topic 2)

You plan to deploy several Azure virtual machines.

You need to control the ports that devices on the internet can use to access the virtual machines. What should you use?

- A. an Azure Active Directory (AzureAD) role
- B. an Azure key vault
- C. an Azure Active Directory group
- D. a network security group (NSG)

Answer: D

Explanation:

<https://docs.microsoft.com/en-us/azure/virtual-network/security-overview>

NEW QUESTION 236

- (Exam Topic 1)

To what should an application connect to retrieve security tokens?

- A. an Azure Storage account
- B. Azure Active Directory (Azure AD)
- C. a certificate store
- D. an Azure key vault

Answer: B

NEW QUESTION 238

- (Exam Topic 1)

Note: This question is part of a series of questions that present the same scenario. Each question in the series contains a unique solution that might meet the stated goals. Some question sets might have more than one correct solution, while others might not have a correct solution.

After you answer a question in this section, you will NOT be able to return to it. As a result, these questions will not appear in the review screen.

You have an Azure environment.

You need to create a new Azure virtual machine from an Android laptop. Solution: You use the Azure portal.

Does this meet the goal?

- A. Yes
- B. No

Answer: A

Explanation:

The Azure portal is a web-based, unified console that provides an alternative to command-line tools. With the Azure portal, you can manage your Azure subscription using a graphical user interface. You can build, manage, and monitor everything from simple web apps to complex cloud deployments. Create custom dashboards for an organized view of resources. Configure accessibility options for an optimal experience.

Being web-based, the Azure portal can be run on a browser from a tablet that runs the Android operating system.

References:

<https://docs.microsoft.com/en-us/azure/azure-portal/azure-portal-overview>

NEW QUESTION 243

- (Exam Topic 1)

For each of the following statements, select Yes if the statement is true. Otherwise, select No. NOTE: Each correct selection is worth one point.

Statements	Yes	No
A platform as a service (PaaS) solution that hosts web apps in Azure provides full control of the operating systems that host applications.	<input type="radio"/>	<input type="radio"/>
A platform as a service (PaaS) solution that hosts web apps in Azure provides the ability to scale the platform automatically .	<input type="radio"/>	<input type="radio"/>
A platform as a service (PaaS) solution that hosts web apps in Azure provides professional development services to continuously add features to custom applications.	<input type="radio"/>	<input type="radio"/>

- A. Mastered
- B. Not Mastered

Answer: A

Explanation:

Statements	Yes	No
A platform as a service (PaaS) solution that hosts web apps in Azure provides full control of the operating systems that host applications.	<input type="radio"/>	<input checked="" type="radio"/>
A platform as a service (PaaS) solution that hosts web apps in Azure provides the ability to scale the platform automatically .	<input checked="" type="radio"/>	<input type="radio"/>
A platform as a service (PaaS) solution that hosts web apps in Azure provides professional development services to continuously add features to custom applications.	<input checked="" type="radio"/>	<input type="radio"/>

NEW QUESTION 247

- (Exam Topic 1)

Your company plans to deploy an Artificial Intelligence (AI) solution in Azure.

What should the company use to build, test, and deploy predictive analytics solutions?

- A. Azure Logic Apps
- B. Azure Machine Learning designer
- C. Azure Batch
- D. Azure Cosmos DB

Answer: B

Explanation:

Section: Understand Core Azure Services

NEW QUESTION 250

- (Exam Topic 1)

For each of the following statements, select Yes if the statement is true. Otherwise, select No. NOTE: Each correct selection is worth one point.

Statements	Yes	No
An Azure service in private preview is released to all Azure customers.	<input type="radio"/>	<input type="radio"/>
An Azure service in public preview is released to all Azure customers.	<input type="radio"/>	<input type="radio"/>
An Azure service in general availability is released to a subset of Azure customers.	<input type="radio"/>	<input type="radio"/>

- A. Mastered
- B. Not Mastered

Answer: A

Explanation:

Box 1: No

Most services go to private preview then public preview before being released to general availability. The private preview is only available to certain Azure customers for evaluation purposes.

Box 2: Yes

Public Preview means that the service is in public beta and can be tried out by anyone with an Azure subscription. Services in public preview are often offered at a discount price.

Public previews are excluded from SLAs and in some cases, no support is offered. Box 3: No

An Azure service in general availability is available to all Azure customers, not just a subset of the customers. References:

<https://azure-overview.com/Home/Faq>

NEW QUESTION 254

- (Exam Topic 1)

Note: This question is part of a series of questions that present the same scenario. Each question in the series contains a unique solution that might meet the stated goals. Some question sets might have more than one correct solution, while others might not have a correct solution.

After you answer a question in this section, you will NOT be able to return to it. As a result, these questions will not appear in the review screen.

You have an Azure environment.

You need to create a new Azure virtual machine from an Android laptop. Solution: You use the PowerApps portal.

Does this meet the goal?

A. Yes

B. No

Answer: B

Explanation:

PowerApps lets you quickly build business applications with little or no code. It is not used to create Azure virtual machines. Therefore, this solution does not meet the goal.

PowerApps Portals allow organizations to create websites which can be shared with users external to their organization either anonymously or through the login provider of their choice like LinkedIn, Microsoft Account, other commercial login providers.

References:

<https://powerapps.microsoft.com/en-us/blog/introducing-powerapps-portals-powerful-low-code-websites-for-ext>

NEW QUESTION 259

- (Exam Topic 1)

This question requires that you evaluate the underlined text to determine if it is correct.

An organization that hosts its infrastructure in a private cloud can decommission its data center.

Instructions: Review the underlined text. If it makes the statement correct, select "No change is needed". If the statement is incorrect, select the answer choice that makes the statement correct.

A. No change is needed.

B. in a hybrid cloud

C. in the public cloud

D. on a Hyper-V host

Answer: C

Explanation:

A private cloud is hosted in your datacenter. Therefore, you cannot close your datacenter if you are using a private cloud.

A public cloud is hosted externally, for example, in Microsoft Azure. An organization that hosts its infrastructure in a public cloud can close its data center.

Public cloud is the most common deployment model. In this case, you have no local hardware to manage or keep up-to-date everything runs on your cloud provider's hardware.

Microsoft Azure is an example of a public cloud provider.

In a private cloud, you create a cloud environment in your own datacenter and provide self-service access to compute resources to users in your organization.

This offers a simulation of a public cloud to your users, but you remain completely responsible for the purchase and maintenance of the hardware and software services you provide.

<https://docs.microsoft.com/en-gb/learn/modules/principles-cloud-computing/4-cloud-deployment-models>

NEW QUESTION 262

- (Exam Topic 1)

Match the Azure service to the correct definition.

Instructions: To answer, drag the appropriate Azure service from the column on the left to its description on the right. Each service may be used once, more than once, or not at all.

NOTE: Each correct match is worth one point.

Answer Options

Answer Area

Azure Advisor

Azure Cognitive Services

Azure Application Insights

Azure DevOps

An integrated solution for the deployment of code

A tool that provides guidance and recommendations to improve an Azure environment

A simplified tool to build intelligent Artificial Intelligence (AI) applications

Monitors web applications

A. Mastered

B. Not Mastered

Answer: A

Explanation:
Section: Understand Core Azure Services

NEW QUESTION 266

- (Exam Topic 1)
This question requires that you evaluate the underlined text to determine if it is correct.
Resource groups provide organizations with the ability to manage the compliance of Azure resources across multiple subscriptions.
Instructions: Review the underlined text. If it makes the statement correct, select “No change is needed”. If the statement is incorrect, select the answer choice that makes the statement correct.

- A. No change is needed
- B. Management groups
- C. Azure policies
- D. Azure App Service plans

Answer: C

NEW QUESTION 270

- (Exam Topic 1)
For each of the following statements, select Yes if the statement is true. Otherwise, select No. NOTE: Each correct selection is worth one point.

Answer Area

Statements	Yes	No
Each Azure subscription can contain multiple account administrators.	<input type="radio"/>	<input type="radio"/>
Each Azure subscription can be managed by using a Microsoft account only.	<input type="radio"/>	<input type="radio"/>
An Azure resource group contains multiple Azure subscriptions.	<input type="radio"/>	<input type="radio"/>

- A. Mastered
- B. Not Mastered

Answer: A

Explanation:

Answer Area

Statements	Yes	No
Each Azure subscription can contain multiple account administrators.	<input checked="" type="radio"/>	<input type="radio"/>
Each Azure subscription can be managed by using a Microsoft account only.	<input checked="" type="radio"/>	<input type="radio"/>
An Azure resource group contains multiple Azure subscriptions.	<input type="radio"/>	<input checked="" type="radio"/>

NEW QUESTION 272

- (Exam Topic 1)
A support engineer plans to perform several Azure management tasks by using the Azure CLI. You install the CLI on a computer.
You need to tell the support engineer which tools to use to run the CLI.
Which two tools should you instruct the support engineer to use? Each correct answer presents a complete solution.
NOTE: Each correct selection is worth one point.

- A. Command Prompt
- B. Azure Resource Explorer
- C. Windows PowerShell
- D. Windows Defender Firewall
- E. Network and Sharing Center

Answer: AC

NEW QUESTION 277

- (Exam Topic 1)
For each of the following statements, select Yes if the statement is true. Otherwise, select No. NOTE: Each correct selection is worth one point.

Answer Area

Statements	Yes	No
The Service Level Agreement (SLA) guaranteed uptime for paid Azure services is at least 99.9 percent.	<input type="radio"/>	<input type="radio"/>
Companies can increase the Service Level Agreement (SLA) guaranteed uptime by adding Azure resources to multiple regions.	<input type="radio"/>	<input type="radio"/>
Companies can increase the Service Level Agreement (SLA) guaranteed uptime by purchasing multiple subscriptions.	<input type="radio"/>	<input type="radio"/>

- A. Mastered

B. Not Mastered

Answer: A

Explanation:
 Answer Area

Statements	Yes	No
The Service Level Agreement (SLA) guaranteed uptime for paid Azure services is at least 99.9 percent.	<input checked="" type="radio"/>	<input type="radio"/>
Companies can increase the Service Level Agreement (SLA) guaranteed uptime by adding Azure resources to multiple regions.	<input checked="" type="radio"/>	<input type="radio"/>
Companies can increase the Service Level Agreement (SLA) guaranteed uptime by purchasing multiple subscriptions.	<input type="radio"/>	<input checked="" type="radio"/>

NEW QUESTION 279

- (Exam Topic 1)

For each of the following statements, select Yes if the statement is true. Otherwise, select No.

NOTE: Each correct selection is worth one point.

Statements	Yes	No
Storing 1 TB of data in Azure Blob storage will always cost the same, regardless of the Azure region in which the data is located.	<input type="radio"/>	<input type="radio"/>
When you use a general-purpose v2 Azure Storage account, you are only charged for the amount of data that is stored. All read and write operations are free.	<input type="radio"/>	<input type="radio"/>
Transferring data between Azure Storage accounts in different Azure regions is free.	<input type="radio"/>	<input type="radio"/>

A. Mastered

B. Not Mastered

Answer: A

Explanation:

Statements	Yes	No
Storing 1 TB of data in Azure Blob storage will always cost the same, regardless of the Azure region in which the data is located.	<input type="radio"/>	<input checked="" type="radio"/>
When you use a general-purpose v2 Azure Storage account, you are only charged for the amount of data that is stored. All read and write operations are free.	<input type="radio"/>	<input checked="" type="radio"/>
Transferring data between Azure Storage accounts in different Azure regions is free.	<input type="radio"/>	<input checked="" type="radio"/>

NEW QUESTION 283

- (Exam Topic 1)

For each of the following statements, select Yes if the statement is true. Otherwise, select No. NOTE: Each correct selection is worth one point.

Statements	Yes	No
Authorization to access Azure resources can be provided only to Azure Active Directory (Azure AD) users.	<input type="radio"/>	<input type="radio"/>
Identities stored in Azure Active Directory (Azure AD), third-party cloud services, and on-premises Active Directory can be used to access Azure resources.	<input type="radio"/>	<input type="radio"/>
Azure has built-in authentication and authorization services that provide secure access to Azure resources.	<input type="radio"/>	<input type="radio"/>

- A. Mastered
- B. Not Mastered

Answer: A

Explanation:

Statements	Yes	No
Authorization to access Azure resources can be provided only to Azure Active Directory (Azure AD) users.	<input type="radio"/>	<input checked="" type="radio"/>
Identities stored in Azure Active Directory (Azure AD), third-party cloud services, and on-premises Active Directory can be used to access Azure resources.	<input checked="" type="radio"/>	<input type="radio"/>
Azure has built-in authentication and authorization services that provide secure access to Azure resources.	<input checked="" type="radio"/>	<input type="radio"/>

NEW QUESTION 285

- (Exam Topic 1)

Note: This question is part of a series of questions that present the same scenario. Each question in the series contains a unique solution that might meet the stated goals. Some question sets might have more than one correct solution, while others might not have a correct solution.

After you answer a question in this section, you will NOT be able to return to it. As a result, these questions will not appear in the review screen.

You have an Azure environment.

You need to create a new Azure virtual machine from an Android laptop. Solution: You use Bash in Azure Cloud Shell.

Does this meet the goal?

- A. Yes
- B. No

Answer: B

Explanation:

Reference:

https://www.thomasmaurer.ch/2019/01/azure-cloud-shell/ https://www.pcmag.com/encyclopedia/term/66542/android-laptop

NEW QUESTION 287

- (Exam Topic 1)

This question requires that you evaluate the underlined text to determine if it is correct.

You deploy an Azure resource. The resource becomes unavailable for an extended period due to a service outage. Microsoft will automatically refund your bank account.

Instructions: Review the underlined text. If it makes the statement correct, select “No change is needed”. If the statement is incorrect, select the answer choice that makes the statement correct.

- A. No change is needed.
- B. automatically migrate the resource to another subscription
- C. automatically credit your account
- D. send you a coupon code that you can redeem for Azure credits

Answer: C

NEW QUESTION 292

- (Exam Topic 1)

For each of the following statements, select Yes if the statement is true. Otherwise, select No. NOTE: Each correct selection is worth one point.

Statements	Yes	No
An Azure free account has a spending limit.	<input type="radio"/>	<input type="radio"/>
An Azure free account has a limit for the amount of data that can be uploaded to Azure.	<input type="radio"/>	<input type="radio"/>
An Azure free account can contain an unlimited number of web apps.	<input type="radio"/>	<input type="radio"/>

- A. Mastered
- B. Not Mastered

Answer: A

Explanation:

Box 1: Yes

An Azure free account has a spending limit. This is currently 200 USD or 150 GBP.

Box 2: No

Azure free account has a 5 GB blob storage limit and a 5 GB file storage limit. Box 3: No

Azure free account has a limit of 10 web, mobile or API apps References:

<https://azure.microsoft.com/en-us/free/> <https://azure.microsoft.com/en-us/free/free-account-faq/>

<https://docs.microsoft.com/en-us/azure/billing/billing-avoid-charges-free-account> <https://azure.microsoft.com/en-us/free/free-account-faq/>

<https://docs.microsoft.com/en-us/azure/billing/billing-avoid-charges-free-account>

NEW QUESTION 297

- (Exam Topic 1)

Which Azure service should you use to store certificates?

- A. Azure Security Center
- B. an Azure Storage account
- C. Azure Key Vault
- D. Azure Information Protection

Answer: C

Explanation:

Azure Key Vault is a secure store for storage various types of sensitive information including passwords and certificates.

Azure Key Vault can be used to Securely store and tightly control access to tokens, passwords, certificates, API keys, and other secrets.

Secrets and keys are safeguarded by Azure, using industry-standard algorithms, key lengths, and hardware security modules (HSMs). The HSMs used are Federal Information Processing Standards (FIPS) 140-2 Level 2 validated.

Access to a key vault requires proper authentication and authorization before a caller (user or application) can get access. Authentication establishes the identity of the caller, while authorization determines the operations that they are allowed to perform.

References:

<https://docs.microsoft.com/en-us/azure/key-vault/key-vault-overview>

NEW QUESTION 299

- (Exam Topic 1)

Your company hosts an accounting named App1 that is used by all the customers of the company.App1 has low usage during the first three weeks of each month and very high usage during the last week of each month.

Which benefit of Azure Cloud Services supports cost management for this type of usage pattern?

- A. high availability
- B. high latency
- C. elasticity
- D. load balancing

Answer: C

Explanation:

Elasticity in this case is the ability to provide additional compute resource when needed and reduce the compute resource when not needed to reduce costs. Autoscaling is an example of elasticity.

Elastic computing is the ability to quickly expand or decrease computer processing, memory and storage resources to meet changing demands without worrying about capacity planning and engineering for peak usage. Typically controlled by system monitoring tools, elastic computing matches the amount of resources allocated to the amount of resources actually needed without disrupting operations. With cloud elasticity, a company avoids paying for unused capacity or idle resources and doesn't have to worry about investing in the purchase or maintenance of additional resources and equipment.

<https://azure.microsoft.com/en-gb/overview/what-is-elastic-computing/>

NEW QUESTION 301

- (Exam Topic 1)

This question requires that you evaluate the underlined text to determine if it is correct.

Azure policies provide a common platform for deploying objects to a cloud infrastructure and for implementing consistency across the Azure environment.

Instructions: Review the undefined text If it makes the statement correct, select "No change is needed." If the statement is incorrect select the answer choice that makes the statement correct.

- A. No change is needed.
- B. Resource groups provide
- C. Azure Resource Manager provides
- D. Management groups provide

Answer: C

NEW QUESTION 302

- (Exam Topic 1)

This question requires that you evaluate the underlined text to determine if it is correct.

When you are implementing a software as a service (SaaS) solution, you are responsible for configuring high availability.

Instructions: Review the underlined text. If it makes the statement correct, select "No change is needed". If the statement is incorrect, select the answer choice that makes the statement correct.

- A. No change is needed.
- B. defining scalability rules
- C. installing the SaaS solution
- D. configuring the SaaS solution

Answer: D

NEW QUESTION 306

- (Exam Topic 1)

For each of the following statements, select Yes if the statement is true. Otherwise, select No. NOTE: Each correct selection is worth one point.

Statements	Yes	No
Data that is copied to an Azure Storage account is maintained automatically in at least three copies.	<input type="radio"/>	<input type="radio"/>
All data that is copied to an Azure Storage account is backed up automatically to another Azure data center.	<input type="radio"/>	<input type="radio"/>
An Azure Storage account can contain up to 2 TB of data and up to one million files.	<input type="radio"/>	<input type="radio"/>

- A. Mastered
B. Not Mastered

Answer: A

Explanation:

Statements	Yes	No
Data that is copied to an Azure Storage account is maintained automatically in at least three copies.	<input checked="" type="radio"/>	<input type="radio"/>
All data that is copied to an Azure Storage account is backed up automatically to another Azure data center.	<input type="radio"/>	<input checked="" type="radio"/>
An Azure Storage account can contain up to 2 TB of data and up to one million files.	<input type="radio"/>	<input checked="" type="radio"/>

NEW QUESTION 309

- (Exam Topic 1)

Note: This question is part of a series of questions that present the same scenario. Each question in the series contains a unique solution that might meet the stated goals. Some question sets might have more than one correct solution, while others might not have a correct solution.

After you answer a question in this section, you will NOT be able to return to it. As a result, these questions will not appear in the review screen.

Your company has an Azure subscription that contains the following unused resources:

- * 20 user accounts in Azure Active Directory (Azure AD)
- * Five groups in Azure AD
- * 10 public IP addresses
- * 10 network interfaces
- * You need to reduce the Azure costs for the company. Solution: You remove the unused user accounts.

Does this meet the goal?

- A. Yes
B. No

Answer: B

Explanation:

You are not charged for user accounts. Therefore, deleting unused user accounts will not reduce the Azure costs for the company.

References:

<https://docs.microsoft.com/en-us/azure/advisor/advisor-cost-recommendations#reduce-costs-by-deleting-or-reco>

NEW QUESTION 311

- (Exam Topic 1)

Note: This question is part of a series of questions that present the same scenario. Each question in the series contains a unique solution that might meet the stated goals. Some question sets might have more than one correct solution, while others might not have a correct solution.

After you answer a question in this section, you will NOT be able to return to it. As a result, these questions will not appear in the review screen.

Your Azure environment contains multiple Azure virtual machines.

You need to ensure that a virtual machine named VM1 is accessible from the Internet over HTTP. Solution: You modify an Azure firewall.

Does this meet the goal?

- A. Yes
B. No

Answer: A

NEW QUESTION 314

- (Exam Topic 1)

Note: This question is part of a series of questions that present the same scenario. Each question in the series contains a unique solution that might meet the stated goals. Some question sets might have more than one correct solution, while others might not have a correct solution.

After you answer a question in this section, you will NOT be able to return to it. As a result, these questions will not appear in the review screen.

You plan to deploy several Azure virtual machines. You need to ensure that the services running on the virtual machines are available if a single data center fails.

Solution: You deploy the virtual machines to two or more scale sets. Does this meet the goal?

- A. Yes
- B. No

Answer: B

Explanation:

Azure virtual machine scale sets let you create and manage a group of load balanced VMs. The number of VM instances can automatically increase or decrease in response to demand or a defined schedule. Scale sets provide high availability to your applications, and allow you to centrally manage, configure, and update many VMs.

Virtual machines in a scale set can be deployed across multiple update domains and fault domains to maximize availability and resilience to outages due to data center outages, and planned or unplanned maintenance events.

<https://docs.microsoft.com/en-us/azure/virtual-machine-scale-sets/availability>

NEW QUESTION 317

- (Exam Topic 1)

For each of the following statements, select Yes if the statement is true. Otherwise, select No. NOTE: Each correct selection is worth one point.

Answer Area

Statements	Yes	No
To implement a hybrid cloud model, a company must always migrate from a private cloud model.	<input type="radio"/>	<input type="radio"/>
A company can extend the computing resources of its internal network by using the public cloud.	<input type="radio"/>	<input type="radio"/>
In a public cloud model, only guest users at your company can access the resources in the cloud.	<input type="radio"/>	<input type="radio"/>

- A. Mastered
- B. Not Mastered

Answer: A

Explanation:

Answer Area

Statements	Yes	No
To implement a hybrid cloud model, a company must always migrate from a private cloud model.	<input type="radio"/>	<input checked="" type="radio"/>
A company can extend the computing resources of its internal network by using the public cloud.	<input checked="" type="radio"/>	<input type="radio"/>
In a public cloud model, only guest users at your company can access the resources in the cloud.	<input type="radio"/>	<input checked="" type="radio"/>

NEW QUESTION 321

- (Exam Topic 1)

Note: This question is part of a series of questions that present the same scenario. Each question in the series contains a unique solution that might meet the stated goals. Some question sets might have more than one correct solution, while others might not have a correct solution.

After you answer a question in this section, you will NOT be able to return to it. As a result, these questions will not appear in the review screen.

Your company plans to purchase Azure.

The company's support policy states that the Azure environment must provide an option to access support engineers by phone or email.

You need to recommend which support plan meets the support policy requirement. Solution: Recommend a Basic support plan.

Does this meet the goal?

- A. Yes
- B. No

Answer: B

Explanation:

The Basic support plan does not have any technical support for engineers.

Access to Support Engineers via email or phone is available in the following support plans: Premier, Professional Direct and standard.

References:

<https://azure.microsoft.com/en-gb/support/plans/>

NEW QUESTION 325

- (Exam Topic 1)

You plan to implement several security services for an Azure environment. You need to identify which Azure services must be used to meet the following security requirements:

- Monitor threats by using sensors
- Enforce azure Multi-Factor Authentication (MFA) based on a condition

Which Azure service should you identify for each requirement? To answer, select the appropriate option in the answer area.

NOTE: Each correct selection is worth one point.

Monitor threats by using sensors:

Azure Monitor
Azure Security Center
Azure Active Directory (Azure AD) Identity Protection
Azure Advanced Threat Protection (ATP)

Enforce Azure MFA based on a condition:

Azure Monitor
Azure Security Center
Azure Active Directory (Azure AD) Identity Protection
Azure Advanced Threat Protection (ATP)

- A. Mastered
- B. Not Mastered

Answer: A

Explanation:

Box 1:

To monitor threats by using sensors, you would use Azure Advanced Threat Protection (ATP).

Azure Advanced Threat Protection (ATP) is a cloud-based security solution that leverages your on-premises Active Directory signals to identify, detect, and investigate advanced threats, compromised identities, and malicious insider actions directed at your organization.

Sensors are software packages you install on your servers to upload information to Azure ATP. Box 2:

To enforce MFA based on a condition, you would use Azure Active Directory Identity Protection.

Azure AD Identity Protection helps you manage the roll-out of Azure Multi-Factor Authentication (MFA) registration by configuring a Conditional Access policy to require MFA registration no matter what modern authentication app you are signing in to.

References:

<https://docs.microsoft.com/en-us/azure-advanced-threat-protection/what-is-atp>

<https://docs.microsoft.com/en-us/azure/active-directory/identity-protection/howto-identity-protection-configure>

NEW QUESTION 329

- (Exam Topic 1)

For each of the following statements, select Yes if the statement is true. Otherwise, select No. NOTE: Each correct selection is worth one point.

Statements	Yes	No
An Azure service in private preview is released to all Azure customers.	<input type="radio"/>	<input type="radio"/>
An Azure service in public preview is released to all Azure customers.	<input type="radio"/>	<input type="radio"/>
An Azure service in general availability is released to a subset of Azure customers.	<input type="radio"/>	<input type="radio"/>

- A. Mastered
- B. Not Mastered

Answer: A

Explanation:

Statements	Yes	No
An Azure service in private preview is released to all Azure customers.	<input type="radio"/>	<input checked="" type="radio"/>
An Azure service in public preview is released to all Azure customers.	<input checked="" type="radio"/>	<input type="radio"/>
An Azure service in general availability is released to a subset of Azure customers.	<input type="radio"/>	<input checked="" type="radio"/>

NEW QUESTION 332

- (Exam Topic 1)

What should you use to evaluate whether your company's Azure environment meets regulatory requirements?

- A. Compliance Manager from the Security Trust Portal
- B. the Advisor blade from the Azure policy
- C. the Knowledge Center website
- D. the Security Center blade from the Azure portal

Answer: D

Explanation:

The Security Center blade from the Azure portal includes the 'regulatory compliance dashboard'.

The regulatory compliance dashboard provides insight into your compliance posture for a set of supported standards and regulations, based on continuous assessments of your Azure environment.

In the Azure Security Center regulatory compliance blade, you can get an overview of key portions of your compliance posture with respect to a set of supported standards. Currently supported standards are Azure CIS, PCI DSS 3.2, ISO 27001, and SOC TSP.

In the dashboard, you will find your overall compliance score, and the number of passing versus failing assessments with each standard. You can now focus your attention on the gaps in compliance for a standard or regulation that is important to you.

References:

<https://azure.microsoft.com/en-us/blog/regulatory-compliance-dashboard-in-azure-security-center-now-available>

NEW QUESTION 335

- (Exam Topic 1)

Note: This question is part of a series of questions that present the same scenario. Each question in the series contains a unique solution that might meet the stated goals. Some question sets might have more than one correct solution, while others might not have a correct solution.

After you answer a question in this section, you will NOT be able to return to it. As a result, these questions will not appear in the review screen.

Your Azure environment contains multiple Azure virtual machines.

You need to ensure that a virtual machine named VM1 is accessible from the Internet over HTTP. Solution: You modify a DDoS protection plan.

Does this meet the goal?

- A. Yes
- B. No

Answer: B

NEW QUESTION 340

- (Exam Topic 1)

You need to identify the type of failure for which an Azure availability zone can be used to protect access to Azure services.

What should you identify?

- A. a physical server failure
- B. an Azure region failure
- C. a storage failure
- D. an Azure data center failure

Answer: D

NEW QUESTION 342

- (Exam Topic 1)

Note: This question is part of a series of questions that present the same scenario. Each question in the series contains a unique solution that might meet the stated goals. Some question sets might have more than one correct solution, while others might not have a correct solution.

After you answer a question in this section, you will NOT be able to return to it. As a result, these questions will not appear in the review screen.

Your company plans to migrate all its data and resources to Azure.

The company's migration plan states that only platform as a service (PaaS) solutions must be used in Azure. You need to deploy an Azure environment that supports the planned migration.

Solution: You create an Azure App Service and Azure virtual machines that have Microsoft SQL Server. installed.
 Does this meet the goal?

- A. Yes
- B. No

Answer: B

Explanation:

Azure App Service is a PaaS (Platform as a Service) service. However, Azure virtual machines are an IaaS (Infrastructure as a Service) service. Therefore, this solution does not meet the goal.

NEW QUESTION 347

- (Exam Topic 1)

Your company plans to automate the deployment of servers to Azure.

Your manager is concerned that you may expose administrative credentials during the deployment.

You need to recommend an Azure solution that encrypts the administrative credentials during the deployment. What should you include in the recommendation?

- A. Azure Key Vault
- B. Azure Multi-Factor Authentication (MFA)
- C. Azure Security Center
- D. Azure Information Protection

Answer: A

NEW QUESTION 349

- (Exam Topic 1)

Your company has several business units.

Each business unit requires 20 different Azure resources for daily operation. All the business units require the same type of Azure resources.

You need to recommend a solution to automate the creation of the Azure resources. What should you include in the recommendations?

- A. Azure Resource Manager templates
- B. virtual machine scale sets
- C. the Azure API Management service
- D. management groups

Answer: A

Explanation:

You can use Azure Resource Manager templates to automate the creation of the Azure resources. Deploying resource through templates is known as 'Infrastructure as code'.

To implement infrastructure as code for your Azure solutions, use Azure Resource Manager templates. The template is a JavaScript Object Notation (JSON) file that defines the infrastructure and configuration for your project. The template uses declarative syntax, which lets you state what you intend to deploy without having to write the sequence of programming commands to create it. In the template, you specify the resources to deploy and the properties for those resources.

References:

<https://docs.microsoft.com/en-us/azure/azure-resource-manager/templates/overview>

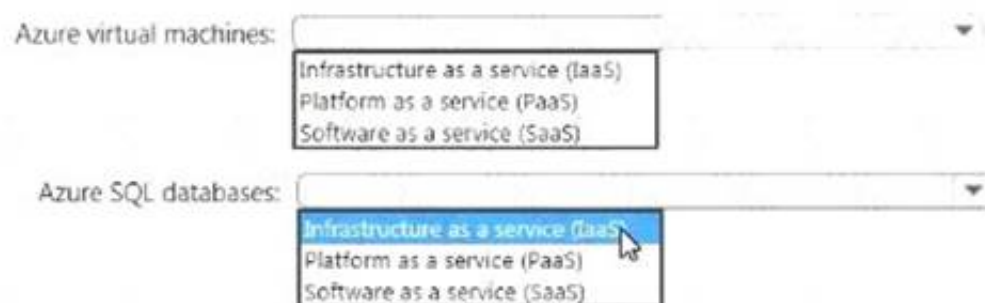
NEW QUESTION 352

- (Exam Topic 1)

Which cloud deployment is used for Azure virtual machines and Azure SQL database? To answer, select the appropriate options in the answer area.

NOTE: Each correct selection is worth one point.

Answer Area



- A. Mastered
- B. Not Mastered

Answer: A

Explanation:

Azure virtual machine = Infrastructure as a service (IaaS) Azure SQL databases = Platform as a service (PaaS)

NEW QUESTION 355

- (Exam Topic 1)

Your network contains an Active Directory forest. The forest contains 5,000 user accounts.

Your company plans to migrate all network resources to Azure and to decommission the on-premises data center.

You need to recommend a solution to minimize the impact on users after the planned migration. What should you recommend?

- A. Implement Azure Multi-Factor Authentication (MFA)
- B. Sync all the Active Directory user accounts to Azure Active Directory (Azure AD)
- C. Instruct all users to change their password
- D. Create a guest user account in Azure Active Directory (Azure AD) for each user

Answer: B

Explanation:

To migrate to Azure and decommission the on-premises data center, you would need to create the 5,000 user accounts in Azure Active Directory. The easy way to do this is to sync all the Active Directory user accounts to Azure Active Directory (Azure AD). You can even sync their passwords to further minimize the impact on users.

The tool you would use to sync the accounts is Azure AD Connect. The Azure Active Directory Connect synchronization services (Azure AD Connect sync) is a main component of Azure AD Connect. It takes care of all the operations that are related to synchronize identity data between your on-premises environment and Azure AD.

<https://docs.microsoft.com/en-us/azure/active-directory/hybrid/how-to-connect-sync-what-is>

NEW QUESTION 358

- (Exam Topic 1)

For each of the following statements, select Yes if the statement is true. Otherwise, select No. NOTE: Each correct selection is worth one point.

Statements	Yes	No
Most Azure services are introduced in private preview before being introduced in public preview, and then in general availability.	<input type="radio"/>	<input type="radio"/>
Azure services in public preview can be managed only by using the Azure CLI.	<input type="radio"/>	<input type="radio"/>
The cost of an Azure service in private preview decreases when the service becomes generally available.	<input type="radio"/>	<input type="radio"/>

- A. Mastered
- B. Not Mastered

Answer: A

Explanation:

Section: Understand Azure Pricing and Support

NEW QUESTION 362

.....

THANKS FOR TRYING THE DEMO OF OUR PRODUCT

Visit Our Site to Purchase the Full Set of Actual AZ-900 Exam Questions With Answers.

We Also Provide Practice Exam Software That Simulates Real Exam Environment And Has Many Self-Assessment Features. Order the AZ-900 Product From:

<https://www.2passeasy.com/dumps/AZ-900/>

Money Back Guarantee

AZ-900 Practice Exam Features:

- * AZ-900 Questions and Answers Updated Frequently
- * AZ-900 Practice Questions Verified by Expert Senior Certified Staff
- * AZ-900 Most Realistic Questions that Guarantee you a Pass on Your FirstTry
- * AZ-900 Practice Test Questions in Multiple Choice Formats and Updatesfor 1 Year