

Microsoft

Exam Questions PL-900

Microsoft Power Platform Fundamentals



NEW QUESTION 1

- (Exam Topic 1)

This question requires that you evaluate the BOLD text to determine if it is correct.

You have a Power Apps app. You create a new version of the app and then publish the new version. A customer goes through the process of restoring the previous version of the app. In the Version tab for the app, you will see two versions of the app.

Review the underlined text. If it makes the statement correct, select "No change is needed." If the statement is incorrect, select the answer choice that makes the statement correct.

- A. No change is needed.
- B. one
- C. three
- D. four

Answer: C

Explanation:

Restore a canvas app to a previous version in PowerApps.

- * 1. Open powerapps.com, and then click or tap Apps in the left navigation bar.
- * 2. Near the right edge, click or tap the info icon for the app that you want to restore.
- * 3. Click or tap the Versions tab, and then click or tap Restore for the version that you want to restore.

Details • Share • **Versions** • Settings • Analytics (preview)

PowerApps keeps a version history of your apps.

VERSION	MODIFIED	MODIFIED BY	POWERAPPS RELEASE ?	PUBLISHED	COMMENT
2	8/20/2018 2:24:29 PM	Firstname Lastname	3.18081.19	Live	
1	7/9/2018 10:55:48 AM	Firstname LastName	3.18071.36		<div>Restore</div> <div>Delete</div>

- * 4. In the confirmation dialog box, click or tap Restore. A new version is added to your list.

Details • Share • **Versions** • Settings • Analytics (preview)

PowerApps keeps a version history of your apps.

VERSION	MODIFIED	MODIFIED BY	POWERAPPS RELEASE ?	PUBLISHED	COMMENT
3	8/20/2018 2:41:30 PM	Firstname Lastname	3.18071.36		Publish this version
2	8/20/2018 2:24:29 PM	Firstname Lastname	3.18081.19	Live	<div>Restore</div> <div>Delete</div>
1	7/9/2018 10:55:48 AM	Firstname Lastname	3.18071.36		<div>Restore</div> <div>Delete</div>

Reference:

<https://docs.microsoft.com/en-us/powerapps/maker/canvas-apps/restore-an-app>

NEW QUESTION 2

- (Exam Topic 1)

You manage the support team at a rapidly growing company.

Customers and support technicians need a better experience when logging and responding to support requests. You need more visibility into what the support technicians are doing every week.

You need to recommend tools to help the company's needs.

Which tools should you recommend? To answer, drag the appropriate tools to the correct requirements. Each tool may be used once, more than once, or not at all. You may need to drag the split bar between panes or scroll to view content.

NOTE: Each correct selection is worth one point.

Tools

Power Apps

Microsoft Flow

Power BI

Common Data Service

Answer Area

Requirement

Customers must be able to submit support requests by using a website.

Support requests must be created and stored.

Support technicians must be notified when a new support request is entered.

Support technicians must be able to enter a status report for work completed during the previous week by using a mobile app.

Tool

Tool

Tool

Tool

Tool

- A. Mastered
B. Not Mastered

Answer: A

Explanation:

Tools

Power Apps

Microsoft Flow

Power BI

Common Data Service

Answer Area

Requirement

Customers must be able to submit support requests by using a website.

Support requests must be created and stored.

Support technicians must be notified when a new support request is entered.

Support technicians must be able to enter a status report for work completed during the previous week by using a mobile app.

Tool

Power BI

Common Data Service

Microsoft Flow

Power Apps

NEW QUESTION 3

- (Exam Topic 1)

A travel company plans to use the Power Platform to create tools that help travel agents book customer travel. You need to recommend solutions for the company. What should you recommend? To answer, drag the appropriate tools to the correct requirements. Each tool may be used once, more than once, or not at all. You may need to drag the split bar between panes or scroll to view content.

NOTE: Each correct selection is worth one point.

Tools

Business rule

Business process flow

Power Automate

Power BI

Answer Area

Requirement

If a customer is travelling with a person under the age of 18, a field must display to collect date of birth for the under 18 traveler only.

Ensure that all travel agents use the same process with all customers.

Send a confirmation email to customers after reservations are complete.

Tool

Tool

Tool

Tool

- A. Mastered
B. Not Mastered

Answer: A

Explanation:

Reference:

https://docs.microsoft.com/en-us/power-automate/getting-started

https://docs.microsoft.com/en-us/powerapps/maker/common-data-service/data-platform-create-business-rule#:~:

NEW QUESTION 4

- (Exam Topic 2)

A manufacturing company is evaluating AI Builder.

You need to select AI Builder models to address specified requirements.

Which model types should you use? To answer, drag the appropriate model types to the correct requirements. Each model type may be used once, more than once, or not at all. You may need to drag the split bar between panes or scroll to view content.

NOTE: Each correct selection is worth one point.

Model types		Requirement	Model type
<div>prediction</div>		Identify products without labels or serial numbers.	<div>model type</div>
<div>form processing</div>	<div></div>	Identify customers who might not pay their invoices on time.	<div>model type</div>
<div>object detection</div>	<div></div>		

- A. Mastered
- B. Not Mastered

Answer: A

Explanation:

Reference:
<https://docs.microsoft.com/en-us/ai-builder/object-detection-model-in-flow> <https://docs.microsoft.com/en-us/ai-builder/prediction-overview>

NEW QUESTION 5

- (Exam Topic 2)
You create a business rule on contact entity to enforce the requirement that users must enter either a telephone number, fax number, or an email when creating a new record.
The company decides to remove fax number from the condition. You need to update the business rule.
What are two ways of achieving the goal? Each correct answer presents a complete solution. NOTE: Each correct selection is worth one point.

- A. Save a copy of the rule and change the conditio
- B. Deactivate and delete the original rule.
- C. Deactivate the business rule and change the condition.
- D. Take a snapshot of the business rule and change the condition.
- E. Change the condition and activate the change.

Answer: AD

Explanation:

Reference:
<https://docs.microsoft.com/en-us/powerapps/maker/canvas-apps/working-with-rules>

NEW QUESTION 6

- (Exam Topic 2)
A company is evaluating Power Platform and has questions about the role that Common Data Service plays in using Power Apps and Power Automate.
For each of the following statements, select Yes if the statement is true. Otherwise, select No. NOTE: Each correct selection is worth one point.

Statement	Yes	No
Model-driven apps require a Common Data Service database.	<div></div>	<div></div>
A flow instance can only access one Common Data Service database.	<div></div>	<div></div>
Canvas apps require a Common Data Service database.	<div></div>	<div></div>

- A. Mastered
- B. Not Mastered

Answer: A

Explanation:

Statement	Yes	No
Model-driven apps require a Common Data Service database.	<div></div>	<div></div>
A flow instance can only access one Common Data Service database.	<div></div>	<div></div>
Canvas apps require a Common Data Service database.	<div></div>	<div></div>

NEW QUESTION 7

- (Exam Topic 3)

You are creating Power BI reports.

You need to choose which filters you can use for reports.

Which three types of filters can you use? Each correct answer presents a complete solution. NOTE: Each correct selection is worth one point.

- A. drill-down
- B. automatic
- C. database
- D. manual
- E. external

Answer: ABD

Explanation:

Reference:

<https://docs.microsoft.com/en-us/power-bi/power-bi-report-filter-types>

NEW QUESTION 8

- (Exam Topic 3)

You create a set of dashboards and reports for a project team that combines data from different sources in Power BI. Some of the data is considered sensitive.

You need to distribute the dashboards and reports securely to the team. What should you create?

- A. a custom data connector
- B. a published app
- C. a Microsoft flow
- D. a Power BI workspace

Answer: B

Explanation:

Reference:

<https://docs.microsoft.com/en-us/power-bi/service-how-to-collaborate-distribute-dashboards-reports>

NEW QUESTION 9

- (Exam Topic 3)

A company manages a chain of retail stores. The company stores a list of retail store names and numbers in one Power BI table. The company stores sales transaction data including a transaction ID in another table.

The transaction ID includes the store number.

You need to show the store name for all retail transactions in all Power BI reports.

Which tool should you use?

- A. Query Editor
- B. Power BI Service
- C. Microsoft Excel
- D. Data Connector

Answer: A

Explanation:

Power BI Desktop comes with Query Editor, where you can connect to one or many data sources, shape and transform the data to meet your needs, then load that model into Power BI Desktop.

Reference:

<https://docs.microsoft.com/en-us/power-bi/desktop-query-overview>

NEW QUESTION 10

- (Exam Topic 3)

You create a Power BI dashboard that displays data from Dynamics 365 Customer Engagement. You need to share the Power BI dashboard with coworkers.

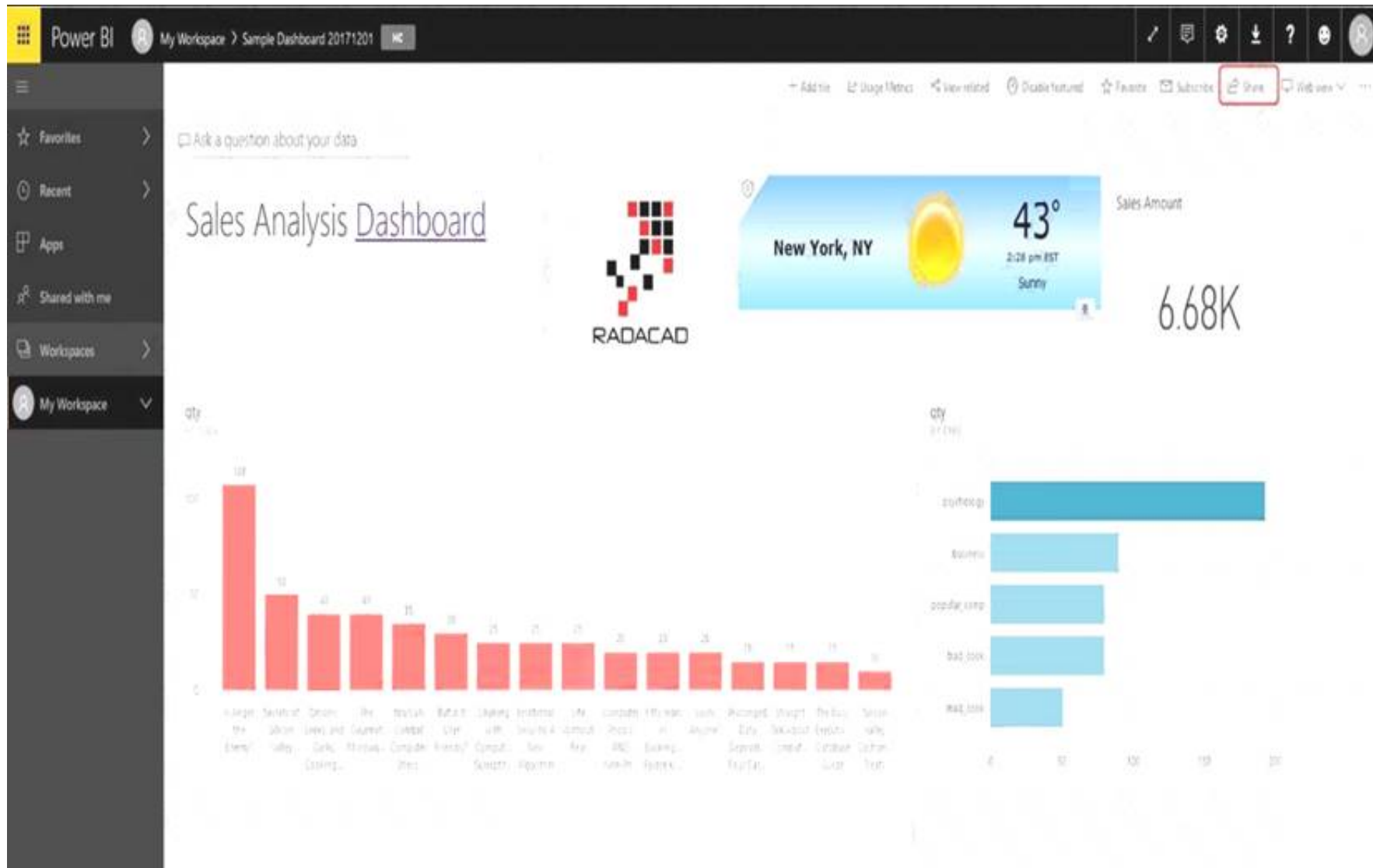
What are three possible ways to achieve the goal? Each correct answer presents a complete solution. NOTE: Each correct selection is worth one point.

- A. Create a Power BI workspace and grant coworkers permissions.
- B. Publish the dashboard as an app to your coworkers.
- C. Export the data into Common Data Service for others to manipulate in Power BI.
- D. Export the data to Microsoft Excel for coworkers to import and view in Power BI.
- E. Embed reports in your company's internal web portal.

Answer: ABE

Explanation:

A: Basic Sharing for Dashboards and Reports through a workspace is the most common way of sharing the Power BI content. Basic Sharing is very simple and easy to use method. You can simply click on the Share button in the dashboard or report, and then share it with other users.



B: Apps are great sharing method for multiple environment, and best way of sharing for users in production environment. Power BI App is the solution for multiple environment approach. With Power BI App, your development environment (workspace), and user environment (App) are isolated from each other.

Note: If you are using SharePoint online as a portal for document management and some other reasons already, then consider using Embed in SharePoint Online feature of Power BI reports. This method is secure and you can share the report only with Power BI users you want.

E: Sometimes, you don't need a secure way of sharing, you may search for an easy and free way of sharing, and your content is not confidential or sensitive. Publish to web is your friend in such situation. This is the only free way of sharing in Power BI, but be aware that this method is not secure. Publish to web method, gives you an embed code, which you can use in any web pages to embed the Power BI report in it

Reference:
<https://radacad.com/power-bi-sharing-methods-comparison-all-in-one-review>

NEW QUESTION 10

- (Exam Topic 3)

A company plans to create an information portal that managers can use to view critical information about their teams. You need to recommend the type of Power BI components that the company should use.

What should you recommend? To answer, drag the appropriate components to the correct requirements. Each component may be used once, more than once, or not at all. You may need to drag the split bar between panes or scroll to view content.

NOTE. Each correct selection is worth one point.

Component types	Requirement	Component type
Dashboard	Display data from a Microsoft Excel workbook that has multiple worksheets into one chart.	Component type
Report	Display the top departmental goal metrics and alert users when specific thresholds targets are met.	Component type
	Display Sales charts that can be filtered by region.	Component type

- A. Mastered
- B. Not Mastered

Answer: A

Explanation:

Box 1: Report

Reports are more detailed data displayed in many formats like chart, graphs list and in tabular, etc. Box 2: Dashboard
Dashboards are a business key performance indicator view where it displays key values that can change business profits and can be glanced at one screen.

Box 3: Report
Power BI dashboards cannot slice and dice, but reports have many ways to filter and slice.

Note: Power BI dashboards are one placeholder to display the most important decision-making facts to run a business. But reports are more detailed data displayed in many formats like chart, graphs list and in tabular, etc. Reports are based on one dataset or one business unit data for example reports of a store belonging to California.

Reference:

https://www.educba.com/power-bi-dashboard-vs-report/

NEW QUESTION 12

- (Exam Topic 3)

A company is using Power BI to build visualizations. The company's IT support team needs to know when to install Power BI Desktop on users' computers and where the Power BI Service will suffice to perform tasks. You need to recommend solutions for the company. What should you recommend? To answer, drag the appropriate components to the correct requirements. Each component may be used once, more than once, or not at all. You may need to drag the split bar between panes or scroll to view content. NOTE: Each correct selection is worth one point.

Tools

Power BI Service only

Power BI Desktop only

Power BI Desktop or Power BI Service

Answer Area

Requirement

Create dashboards.

Create reports.

Create calculated columns.

Configure security.

Configure sharing.

Component

Tool

Tool

Tool

Tool

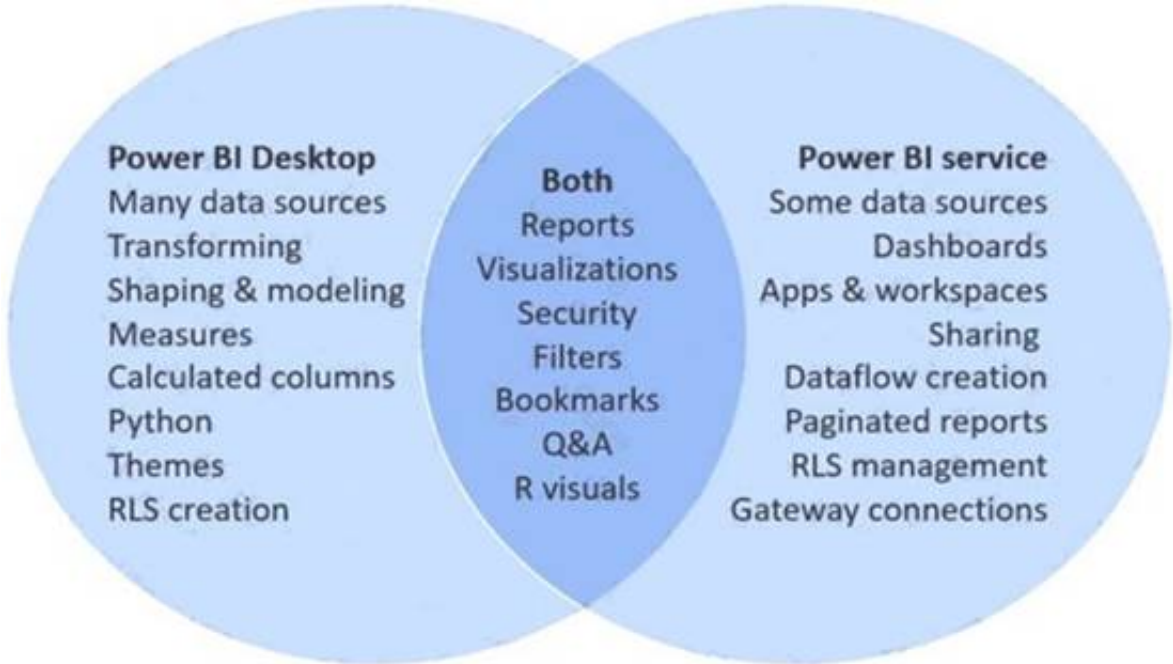
Tool

- A. Mastered
- B. Not Mastered

Answer: A

Explanation:

In a Venn diagram comparing Power BI Desktop and the Power BI service, the area in the middle shows how the two overlap. Some tasks you can do in either Power BI Desktop or the service. The two sides of the Venn diagram show the features that are unique to the application and the service.



Reference:
https://docs.microsoft.com/en-us/power-bi/designer/service-service-vs-desktop

NEW QUESTION 14

- (Exam Topic 3)

You have a Power BI report. For each of the following statements, select Yes if the statement is true. Otherwise, select No. NOTE: Each correct selection is worth one point.

Statement	Yes	No
You can export data from a visualization in a Power BI report.	<input type="radio"/>	<input type="radio"/>
You can show the data behind a visual report on your screen without exporting the data.	<input type="radio"/>	<input type="radio"/>
You must export data to view supporting data for a KPI.	<input type="radio"/>	<input type="radio"/>

- A. Mastered
- B. Not Mastered

Answer: A

Explanation:

Box 1: Yes

If you'd like to see the data that Power BI uses to create a visualization, you can display that data in Power BI. You can also export that data to Excel as an .xlsx or .csv file. The option to export the data requires a Pro or Premium license and edit permissions to the dataset and report.

Note: Export data from a Power BI dashboard

- Select the ellipsis in the upper-right corner of the visualization.
- Choose the Export data icon.
- Power BI exports the data to a .csv file. If you've filtered the visualization, then the app will filter the downloaded data.
- Your browser will prompt you to save the file. Once saved, open the .csv file in Excel.

Box 2: No

Underlying data: Select this option if you want to see the data in the visual and additional data from the model (see chart below for details). If your visualization has an aggregate, selecting Underlying data removes the aggregate. When you select Export, Power BI exports the data to an .xlsx file and your browser prompts you to save the file. Once saved, open the file in Excel.

Box 3: Yes

A KPI dataset needs to contain goal values for a KPI. If your dataset doesn't contain goal values, you can create them by adding an Excel sheet with goals to your data model or PBIX file.

Note: A Key Performance Indicator (KPI) is a visual cue that communicates the amount of progress made toward a measurable goal.

Reference:

<https://docs.microsoft.com/en-us/power-bi/visuals/power-bi-visualization-export-data> <https://docs.microsoft.com/en-us/power-bi/visuals/power-bi-visualization-kpi>

NEW QUESTION 16

- (Exam Topic 4)

You create a Power App portal.

When a user signs into the portal the following error displays: user not found You confirm that the user's sign in information is correct.

You need to determine the cause of the error. What should you do?

- A. Disable custom error messages.
- B. Create a custom error message.
- C. Enable diagnostic tools in Lifecycle Services.
- D. Enable Maintenance mode.

Answer: C

Explanation:

Reference:

<https://docs.microsoft.com/en-us/dynamics365/fin-ops-core/dev-itpro/lifecycle-services/monitoring-diagnostics> <https://docs.microsoft.com/en-us/dynamics365/fin-ops-core/dev-itpro/lifecycle-services/user-logins>

NEW QUESTION 20

- (Exam Topic 4)

A company uses Dynamics 365 Supply Chain Management.

The company wants to build custom user interfaces that add additional functionality.

You need to recommend a solution for the company. What should you recommend?

- A. Power BI
- B. Power Apps canvas apps
- C. AI Builder
- D. Microsoft Flow

Answer: B

Explanation:

Microsoft Power Apps provides a consistent experience for building apps and extending Office 365 and Dynamics 365. Investments include enhancements on Unified Interface, support for embedding canvas apps in model-driven apps and native support of the Common Data Service for Apps.

Reference:

<https://powerapps.microsoft.com/en-us/roadmap/>

NEW QUESTION 22

- (Exam Topic 4)

A company is considering implementing Power Platform.

For which three scenarios should you consider implementing Power Apps portals? Each correct answer presents a complete solution.

NOTE: Each correct selection is worth one point.

- A. a customer support website that includes knowledge search and support for document uploads
- B. a public website that supports multi-lingual communities with forums and blogs support
- C. an online store with e-commerce requirements including payment processing
- D. a secure website for vendors accessing data stored in Common Data Service
- E. an internal website for employees to access selected data from Dynamics 365 Finance

Answer: ABE

Explanation:

Reference:

<https://docs.microsoft.com/en-us/powerapps/maker/portals/portal-templates>

NEW QUESTION 26

- (Exam Topic 4)

You are creating a canvas app that will be used in several countries/regions.

For each of the following statements, select Yes if the statement is true. Otherwise, select No. NOTE: Each correct selection is worth one point.

Statement	Yes	No
Canvas app authoring environment will adapt to the language setting of the author.	<input type="radio"/>	<input type="radio"/>
When running a canvas app on a mobile device, the app adopts the app author’s language.	<input type="radio"/>	<input type="radio"/>
Numbers and dates in Power Apps app automatically conform to the regional and language settings for a user’s device.	<input type="radio"/>	<input type="radio"/>

- A. Mastered
- B. Not Mastered

Answer: A

Explanation:

Reference:
<https://docs.microsoft.com/en-us/powerapps/maker/canvas-apps/global-apps>

NEW QUESTION 27

- (Exam Topic 5)
A company uses Dynamics 365 Customer Service. The company uses a manual process to manage call escalations. You must use Power Automate to automate the process for routing escalated calls. You need to create the flow. Which type of connector should you use?

- A. Microsoft Excel
- B. Common Data Service
- C. Office 365 Users

Answer: B

NEW QUESTION 29

- (Exam Topic 5)
You need to use Microsoft Flow to perform data-management tasks when users interact with the sales opportunities in Dynamics 365. Which three types of triggers can you use? Each correct answer presents a complete solution. NOTE: Each correct selection is worth one point.

- A. record requested
- B. record deletion
- C. record creation
- D. record updated
- E. record selected

Answer: BCD

Explanation:

Triggers like When a record is created, When a record is updated, and When a record is deleted initiate your flow within a few minutes of the event occurring. In rare cases, your flow can take up to 2 hours to trigger.

Reference:
<https://docs.microsoft.com/en-us/power-automate/connection-dynamics365>

NEW QUESTION 30

- (Exam Topic 5)
A company is using Power Automation to automate business processes. You need to recommend triggers for Instant flows. What trigger types should you recommend? To answer, select the appropriate options in the answer area. NOTE: Each correct selection is worth one point.

Requirement	Trigger type
Run a flow when the user presses a button in a canvas app.	<div><div></div><div>PowerApps for a selected row manually trigger a flow for a selected file (OneDrive for a Business)</div></div>
Run a flow when user presses a button in the mobile Flow app.	<div><div></div><div>PowerApps for a selected row manually trigger a flow for a selected file (SharePoint)</div></div>

- A. Mastered
B. Not Mastered

Answer: A

Explanation:

Reference:

<https://docs.microsoft.com/en-us/powerapps/maker/canvas-apps/using-logic-flows> <https://www.o365dude.com/2017/07/15/flow-buttons-the-hidden-gem-of-microsoft-flow/>

NEW QUESTION 32

- (Exam Topic 5)

You are new to working with Microsoft Flow. You create a flow that extracts birth dates for users and then sends a birthday greeting email to users on their birthday.

The flow does not properly extract birth dates. Where should you make changes?

- A. Connectors
B. Expression
C. Templates

Answer: A

Explanation:

Select the new Date Time connector. There you will see all of the actions, which help you to convert time zones to format them for local time in an email, add or subtract times, or just get the current time.

Reference:

<https://flow.microsoft.com/en-us/blog/nested-apply-to-each/>

NEW QUESTION 34

- (Exam Topic 5)

A company builds and sells residential apartments. The company uses Dynamics 365 Sales to manage sales opportunities.

Management must receive notifications on their mobile devices when sales opportunities are created. You need to select recommend Power Platform components to address the requirements.

Which two components should you recommend? Each correct answer presents part of the solution. NOTE: Each selection is worth one point.

- A. Common Data Service connector
B. Power BI
C. Power Automate
D. AI Builder

Answer: AC

Explanation:

Reference:

<https://www.powerobjects.com/blog/2019/04/05/flow-approval-process/>

NEW QUESTION 37

- (Exam Topic 5)

A company plans to create a workflow that periodically runs a Dynamics 365 action based on data in third-party cloud-based solutions.

Which features should you use to create the workflow? To answer, select the appropriate options in the answer area.

NOTE: Each correct selection is worth one point.

Action	Component
Ensure that Power Automate can interact with the third-party application.	<div><div></div><div>Triggers</div><div>Logic Apps</div><div>Connectors</div><div>Gateways</div></div>
Periodically check for data changes in the third-party application.	<div><div></div><div>Actions</div><div>Triggers</div><div>Connectors</div><div>DirectQuery</div></div>

- A. Mastered
- B. Not Mastered

Answer: A

Explanation:
Graphical user interface, text, application Description automatically generated

NEW QUESTION 40

- (Exam Topic 5)
A software company plans to use Power Automate.
For each of the following statements, select Yes if the statement is true. Otherwise, select No. NOTE: Each correct selection is worth one point.

Statement	Yes	No
You must certify custom connectors before users in other departments within your organization can use the connectors.	<div><div></div></div>	<div><div></div></div>
You must use Microsoft Azure API apps to create a public custom connector.	<div><div></div></div>	<div><div></div></div>

- A. Mastered
- B. Not Mastered

Answer: A

Explanation:
Reference:
<https://docs.microsoft.com/en-us/connectors/custom-connectors/share>

NEW QUESTION 45

- (Exam Topic 5)
A company provides on-site architectural consulting services to residential and business customers. The company wants to implement a simple alert system where a consultant can press a button on their mobile device to send the user’s location to the company as a text notification.
You need to build a button flow that sends the notification.
In which order should you perform the actions? To answer, move all actions from the list of actions to the answer area and arrange them in the correct order.

Actions	Answer Area
Add a new step to the flow.	
Add a trigger.	
Select a connector and action to send text notifications.	
Set the actions properties.	
Save the flow.	

- A. Mastered
- B. Not Mastered

Answer: A

Explanation:
Reference:
<https://docs.microsoft.com/en-us/power-automate/button-flow-with-user-input-tokens#main>

NEW QUESTION 50

- (Exam Topic 5)
You have Power Automate Flow to create a flow that automatically sends email to a project manager when project team members mark a task as complete. Project team members are prematurely marking tasks as complete. You must add quality control into the process by sending an email to a project lead for confirmation that the task is in fact complete before sending the email to the project manager. You need to modify the flow. Which component should you use?

- A. a process argument
- B. a condition
- C. an expression
- D. a trigger
- E. an action

Answer: B

Explanation:
Use a condition and set the action to send an email. Reference:
<https://docs.microsoft.com/en-us/power-automate/add-condition>

NEW QUESTION 51

- (Exam Topic 6)
You create a Power Virtual Agents chatbot for use with Microsoft Teams. You are testing the chatbot. Testers report the following issues:
➤ Changes that you make to the chatbot are not seen by testers.
➤ When users enter the word refund the chatbot must ask the user the product for which they would like a refund. The chatbot does not ask the user for product information.
You need to determine what needs to be done to fix the issues. What should you do? To answer, select the appropriate options in the answer area.
NOTE: Each correct selection is worth one point.

Missing changes	<div><div>Create a new chatbot.</div><div>Publish the chatbot.</div><div>Save the topic.</div><div>Share the chatbot.</div></div>
Refund responses are not working as expected.	<div><div>Change security.</div><div>Create a refund topic.</div><div>Create a refund chatbot.</div></div>

- A. Mastered
- B. Not Mastered

Answer: A

Explanation:

Graphical user interface, text, application, chat or text message Description automatically generated

Reference:

<https://docs.microsoft.com/en-us/power-virtual-agents/publication-fundamentals-publish-channels>

NEW QUESTION 54

- (Exam Topic 6)

You are creating a Power Virtual Agents chatbot for a company.

Which component types should you use for each scenario? To answer, select the appropriate options in the answer area.

NOTE: Each correct selection is worth one point.

Answer Area

Scenario	Component type
The chatbot needs to capture of the user id for authentication.	<div>Topic</div> <div>Entity</div> <div>Action</div>
A customer asks a question that needs to be handed off to a live Customer Support representative.	<div>Topic</div> <div>Entity</div> <div>Action</div>

- A. Mastered
- B. Not Mastered

Answer: A

Explanation:

Graphical user interface, application Description automatically generated

Reference:

<https://docs.microsoft.com/en-us/power-virtual-agents/fundamentals-what-is-power-virtual-agents> <https://www.c-sharpcorner.com/article/get-started-with-bot-development-with-microsoft-power-virtual-agent-ste>

NEW QUESTION 58

- (Exam Topic 7)

A company is creating a canvas app to track and analyze customer visits to their retail stores. Data about customer visits is stored on-premises at each retail store location. The app must display data about customer visits when users launch the app. You need to ensure that the data is available for consumption by the app. Which tool should you use?

- A. Data gateway
- B. Data source
- C. Connector
- D. Microsoft Dataverse
- E. Power Automate

Answer: A

NEW QUESTION 63

- (Exam Topic 7)

A company has an online store to sell toys. The volume of order tracking requests has increased. You need to allow customers to use an interactive interface on the website to request order tracking Information.

Which technology should you use?

- A. Customer Service Insights
- B. Power BI
- C. Power Virtual Agents chatbots
- D. Power Automate flows

Answer: A

NEW QUESTION 67

- (Exam Topic 7)

A company is implementing Power Automate to streamline operations.

The head of customer support relations needs a Power Automate flow that texts a manager when an email meets the following criteria:

- The email is sent as high priority.
- The email is from a customer.

You need to identify how the flow's decision point will know whether the criteria are met. What should you use?

- A. data operations

- B. expressions
- C. variables
- D. actions
- E. triggers

Answer: C

NEW QUESTION 69

- (Exam Topic 7)

You test a business process flow in a sandbox environment.

When you complete testing, you must copy the business process flow to a production environment without bringing any data or other modifications with it.

You must meet the requirements. What should you do?

- A. Export the default solution.
- B. Export the form that contains the business process flow to a separate solution.
- C. Add the business process flow to a separate solutio
- D. Export the solution.
- E. Create a view and export the view.

Answer: B

NEW QUESTION 72

- (Exam Topic 7)

For each of the following statements, select Yes if the statement is true. Otherwise, select No.

NOTE: Each correct selection is worth one point.

Statement	Yes	No
You can embed a canvas app in a Microsoft Forms form to collect user feedback.	<input type="radio"/>	<input type="radio"/>
You can embed a canvas app within a Microsoft Excel worksheet to allow users to interact with data in a structured way.	<input type="radio"/>	<input type="radio"/>
You can embed a canvas app within a Power Platform model-driven app.	<input type="radio"/>	<input type="radio"/>

- A. Mastered
- B. Not Mastered

Answer: A

Explanation:

Box 1: Yes

With embedded canvas apps, makers can bring the power of canvas apps to their model-driven forms. Using embedded canvas apps, it is possible to create rich visual areas on a form and display data from a variety of sources right next to data from Microsoft Dataverse.

Box 2: No

Box 3: Yes Reference:

<https://docs.microsoft.com/en-us/powerapps/maker/model-driven-apps/embed-canvas-app-in-form>

NEW QUESTION 75

- (Exam Topic 7)

You plan to use Power Automate to monitor what people are saying about your company's products. You store the feedback for research and development purposes.

You need to recommend Power Automate components to use for the solution.

To answer drag the appropriate components to the correct requirements. Each component may be used once, more than once, or not at all. You may need to drag the split Car between panes or scroll to view content.

NOTE: Each correct selection is worth one point

Components	Requirement	Component
action	Retrieve the top five posts from your company's Facebook page.	Component
expression	Enter the resulting posts into the product database.	Component
service	Combine author and link fields into a single field.	Component
trigger	Run a flow every hour.	Component

- A. Mastered
- B. Not Mastered

Answer: A

Explanation:

Components

action

expression

service

trigger

Answer Area

Requirement

Retrieve the top five posts from your company's Facebook page.
Enter the resulting posts into the product database.
Combine author and link fields into a single field.
Run a flow every hour.

Component

action

action

expression

trigger

NEW QUESTION 80

- (Exam Topic 7)

You are creating a Power Automate flow.

You need to retrieve data from several sources deluding Microsoft Excel, Azure Data lake, and GitHub.

What should you use? To answer, drag the appropriate components to the correct data sources. Each component may be used once, more than once, or not at all.

You may need to drag the split bar between panes or scroll to view content.

NOTE: Each correct selection Is worth one point

Components

Connector

Expression

Formula

Answer Area

Data source

Microsoft Excel
Azure Data Lake
GitHub

Component

- A. Mastered
- B. Not Mastered

Answer: A

Explanation:

Box 1: Formula

Reading an Excel document retrieves the data from the document, allowing it to be processed and modified in flows.

Read and extract data from an Excel document with the Read from Excel worksheet action.

Box 2: Connector

Azure Data Lake Store connector allows you to read and add data to an Azure Data Lake account. The Azure Data Lake connector is available for Power Automate.

Box 3: Expression Reference:

<https://docs.microsoft.com/en-us/learn/modules/pad-excel-automation/3-reading-excel-document> <https://docs.microsoft.com/en-us/connectors/azuredatalake/>

NEW QUESTION 84

- (Exam Topic 7)

You are creating Power BI visualizations.

You need to display the visuals where a user can perform each function.

Which solution should you use? To answer, select the appropriate option in the answer area. NOTE: Each correct selection is worth one point.

Answer Area

Requirement

Make decisions by analyzing high-level KPIs.

Solution

Power BI service

Power BI Desktop

Power BI dashboards

Requirement

Drill down into the details of a visual.

Solution

Power BI reports

Power BI Desktop

Power BI dashboards

- A. Mastered
- B. Not Mastered

Answer: A

Explanation:

Text, letter Description automatically generated

NEW QUESTION 86

- (Exam Topic 7)

You are building Power BI visualizations for a team.
For each of the following statements, select Yes if the statement is true. Otherwise, select No. NOTE: Each correct selection is worth one point.

Answer Area

Statement	Yes	No
Power BI can only retrieve data from up to two different sources for each dashboard.	<input type="radio"/>	<input type="radio"/>
Power BI visualizations can be used in canvas apps and model driven apps.	<input type="radio"/>	<input type="radio"/>
Power BI can display charts and list boxes on dashboards.	<input type="radio"/>	<input type="radio"/>

- A. Mastered
B. Not Mastered

Answer: A

Explanation:

Yes
Yes Yes

NEW QUESTION 89

- (Exam Topic 7)

instructions: For each of the following statements, select Yes if the statement is true. Otherwise, select No. NOTE: Each correct selection is worth one point.

Answer Area

Statements	Yes	No
A Microsoft Power Platform environment must contain a Microsoft Dataverse database.	<input type="radio"/>	<input type="radio"/>
An app created in an environment can only connect to the data sources that are deployed in the same environment.	<input type="radio"/>	<input type="radio"/>
Microsoft Dataverse for Teams environments are automatically created for all members of the team when you create a Microsoft Power Platform app in Microsoft Teams.	<input type="radio"/>	<input type="radio"/>

- A. Mastered
B. Not Mastered

Answer: A

Explanation:

Answer Area

Statements	Yes	No
A Microsoft Power Platform environment must contain a Microsoft Dataverse database.	<input checked="" type="radio"/>	<input type="radio"/>
An app created in an environment can only connect to the data sources that are deployed in the same environment.	<input checked="" type="radio"/>	<input type="radio"/>
Microsoft Dataverse for Teams environments are automatically created for all members of the team when you create a Microsoft Power Platform app in Microsoft Teams.	<input checked="" type="radio"/>	<input type="radio"/>

NEW QUESTION 93

- (Exam Topic 7)

You are authoring a Power Virtual Agents bot for a company that sells flowers and shrubs.
For each of the following statements, select Yes if the statement is true. Otherwise, select No.
NOTE: Each correct selection is worth one point.

Statement	Yes	No
You can use the prebuilt Postal Code entity to recommend plants that will work within a customer's growing zone.	<input type="radio"/>	<input type="radio"/>
You can create a custom entity to offer color and plant choices for landscaping options that can be made available for customer orders.	<input type="radio"/>	<input type="radio"/>

- A. Mastered
B. Not Mastered

Answer: A

Explanation:

Box 1: Yes

Chatbots built with Power Virtual Agents will understand and display content that's locally relevant to the user. Localized handling and formatting are based on the user's browser locale setting, and include the following elements within a chat conversation:

- > Date and time
>

- Numbers
- > ZIP or postal code
- > Currency
- > Speed

Box 2: Yes

Custom entities:

The prebuilt entities cover commonly used information types, but on some occasions, such as when building a bot that serves a specific purpose, you'll need to teach the bot's language understanding model some domain-specific knowledge.

For instance, let's say you want to build a bot for an outdoor store. In this case, you'll need to teach the bot to acknowledge the "outdoor gears product" category in a dialog.

Reference:

https://docs.microsoft.com/en-us/power-virtual-agents/data-location https://docs.microsoft.com/en-us/power-virtual-agents/advanced-entities-slot-filling

NEW QUESTION 96

- (Exam Topic 7)

A company plans to implement Power BI.

Instructions: For each of the following statements, select Yes if the statement is true. Otherwise, select No. NOTE: Each correct selection is worth one point.

Answer Area

Statements	Yes	No
Power BI Report Builder is the only tool used to create reports to be published to the Power BI service.	<input type="radio"/>	<input type="radio"/>
Power BI service can include calculated columns.	<input type="radio"/>	<input type="radio"/>
Power BI Desktop can include calculated columns.	<input type="radio"/>	<input type="radio"/>

- A. Mastered
- B. Not Mastered

Answer: A

Explanation:

Answer Area

Statements	Yes	No
Power BI Report Builder is the only tool used to create reports to be published to the Power BI service.	<input type="radio"/>	<input checked="" type="radio"/>
Power BI service can include calculated columns.	<input type="radio"/>	<input checked="" type="radio"/>
Power BI Desktop can include calculated columns.	<input checked="" type="radio"/>	<input type="radio"/>

NEW QUESTION 101

- (Exam Topic 7)

A company is implementing a customer service solution by using Dynamics 365 Customer Service. The company is extending the solution to meet additional business requirements.

The solution has the following requirements:

- Customers can log on to a secure website and view the progress of customer service tickets.
- Refund requests over a certain value can be automatically sent for managerial approval in Microsoft Teams.
- Create a custom page showing a gallery of pictures within the Dynamics 365 Customer Service app. You need to use Microsoft Power Platform technologies to implement the solution.

Which technology should you use? To answer, drag the appropriate technologies to the correct requirements. Each technology may be used once, more than once, or not at all. You may need to drag the split bar between panes or scroll to view content.

NOTE: Each correct selection is worth one point.

Technologies

Power Apps portals

Power Automate

Canvas apps

Answer Area

Requirement	Technology
Customers can log on to a secure website and view the progress of customer service tickets.	<div></div>
Refund requests over a certain value can be automatically sent for managerial approval in Microsoft Teams.	<div></div>
Create a custom page showing a gallery of pictures within the Dynamics 365 Customer Service app.	<div></div>

- A. Mastered
- B. Not Mastered

Answer: A

Explanation:

Technologies

Power Apps portals

Power Automate

Canvas apps

Requirement

Customers can log on to a secure website and view the progress of customer service tickets.

Refund requests over a certain value can be automatically sent for managerial approval in Microsoft Teams.

Create a custom page showing a gallery of pictures within the Dynamics 365 Customer Service app.

Technology

Power Apps portals

Power Automate

Canvas apps

NEW QUESTION 105

- (Exam Topic 7)

Match each tool to its task. To answer, drag the appropriate tool from the column on the left to its task on the right. Each tool may be used once, more than once, or not at all. NOTE: Each correct match is worth one point.

Tools

Power BI

Power Automate

Power Apps

Answer Area

Task

Automate workflows.

Trigger an action from an event.

Create a custom mobile data entry screen.

Tool

Tool

Tool

Tool

- A. Mastered
- B. Not Mastered

Answer: A

Explanation:

Reference:

<https://docs.microsoft.com/en-us/power-automate/getting-started> <https://docs.microsoft.com/en-us/powerapps/maker/portals/compose-page#add-form>

NEW QUESTION 109

- (Exam Topic 7)

For each of the following statements, select Yes if the statement is true. Otherwise, select No. NOTE: Each correct selection is worth one point.

Answer Area

Statement

Security roles are modified in Microsoft Azure Active Directory.

Security Roles are assigned to each table.

Yes

No

- A. Mastered
- B. Not Mastered

Answer: A

Explanation:

Answer Area

Statement

Security roles are modified in Microsoft Azure Active Directory.

Security Roles are assigned to each table.

Yes

No

NEW QUESTION 110

- (Exam Topic 7)

A company uses a model-driven app. You add several columns to a form. Users state the new columns do not appear on the form. You need to fix the issue.

Passing Certification Exams Made Easy

visit - <https://www.surepassexam.com>

What should you do?

- A. Ensure columns are in one section of the form only.
- B. Copy the form and rename it.
- C. Publish the form.
- D. Create a Power Automate flow.
- E. Create a business rule.

Answer: E

NEW QUESTION 112

- (Exam Topic 7)

You are developing reports for a company.

You must create visualizations that include the following data:

- > Invoices due from a third-party enterprise resource planning (ERP) system
- > Number of calls made to the client from Microsoft Dataverse
- > Microsoft Excel file data

The reports must be displayed in a single page. You need to create the visualizations.

What should you use?

- A. deployment pipelines
- B. tables
- C. columns
- D. dashboards

Answer: D

NEW QUESTION 114

- (Exam Topic 7)

For each of the following statements, select Yes if the statement is true. Otherwise, select No. NOTE: Each correct selection is worth one point.

Statement	Yes	No
Sharing a model-driven app and sharing a canvas app both send an email with the link to the app to the users.	<input type="radio"/>	<input type="radio"/>
Administrators assign Power Platform security roles and permissions identically for canvas apps, model-driven apps, and shared apps.	<input type="radio"/>	<input type="radio"/>
You must publish both personal and system views before a user may consume them.	<input type="radio"/>	<input type="radio"/>

- A. Mastered
- B. Not Mastered

Answer: A

Explanation:

Yes, No, No

NEW QUESTION 116

- (Exam Topic 7)

A company uses Power Apps canvas apps.

When a user opens Power Apps Studio in a browser and selects Apps I can edit, they do not see an app that they need to modify.

You need to determine why the user cannot see the app.

What are three possible reasons? Each correct answer presents a complete solution. NOTE: Each correct selection is worth one point.

- A. The user selected an incorrect Power Apps environment.
- B. The user has not been granted the System Customizer role.
- C. The user has not been set as the app co-owner.
- D. The app has not been shared with the user.
- E. The environment does not have a Common Data Service database.

Answer: ACD

Explanation:

Reference:

<https://docs.microsoft.com/en-us/powerapps/maker/canvas-apps/edit-app>

NEW QUESTION 121

- (Exam Topic 7)

You create a model-driven app for a department.

You need to make the model-driven app available to other department members. Which two methods should you use? Each correct answer presents a complete

solution.

NOTE: Each correct selection is worth one point.

- A. Publish the app to AppSource.
- B. Send the application's Web URL to other team members by email.
- C. Deploy the application to other user's instances through PowerShell.
- D. Use the Share feature in the Power Apps designer.

Answer: AD

NEW QUESTION 124

.....

Thank You for Trying Our Product

We offer two products:

1st - We have Practice Tests Software with Actual Exam Questions

2nd - Questions and Answers in PDF Format

PL-900 Practice Exam Features:

- * PL-900 Questions and Answers Updated Frequently
- * PL-900 Practice Questions Verified by Expert Senior Certified Staff
- * PL-900 Most Realistic Questions that Guarantee you a Pass on Your First Try
- * PL-900 Practice Test Questions in Multiple Choice Formats and Updates for 1 Year

100% Actual & Verified — Instant Download, Please Click
[Order The PL-900 Practice Test Here](#)