

EMC

Exam Questions DES-6322

Specialist - Implementation Engineer-VxRail Exam



NEW QUESTION 1

What is a valid 2-node VxRail cluster configuration?

- A. Series with 4x 25 GbE in a direct-connect configuration
- B. Series with 4x 10 GbE in a switch configuration
- C. Series with 4x 1 GbE in a direct-connect configuration
- D. Series with 2x 25 GbE in a switch configuration

Answer: B

NEW QUESTION 2

An implementation engineer needs to validate the VxRail network configuration. Where can they obtain the NVT for VxRail?

- A. Dell Technologies Central
- B. Dell Technologies Information Hub
- C. Dell VxRail Expert Channel
- D. Dell VxRail Fast Pass

Answer: A

NEW QUESTION 3

An implementation engineer is configuring External SRS. Where can they find the installation files for SRS VE?

- A. VxRail Support Matrix
- B. VxRail Manager
- C. SolVe Online
- D. Dell Support Page

Answer: B

NEW QUESTION 4

What is validated by running the Proactive Network Performance test in vCenter on a VxRail cluster?

- A. Latency and bandwidth measurement to the witness host
- B. Network configuration and performance for vSAN
- C. Network performance for virtual machines
- D. Latency measurement between DCs for Stretched Clusters

Answer: A

NEW QUESTION 5

A VxRail cluster 4.7.xxx environment is managed by the internal vCenter Server. An implementation engineer plans to deploy a new VxRail cluster using the existing vCenter Server instance, then use the customer-supplied VDS to manage both VxRail clusters.

What must be done?

- A. Migrate the internal vCenter Server to an external vCenter Server, then merge the PSC
- B. Upgrade the VxRail version from 4.7.xxx to 7.0.000
- C. Migrate the internal vCenter Server to an external vCenter Server, then upgrade the VxRail 4.7.xxx to 7.0.100
- D. Upgrade the internal vCenter Server to version 7.0

Answer: B

NEW QUESTION 6

What setting is used for the object space reservation in the VXRAIL-SYSTEM-STORAGE-PROFILE?

- A. 50% Reservation
- B. Thick Provisioning
- C. 75% Reservation
- D. Thin Provisioning

Answer: D

NEW QUESTION 7

A planned VxRail Stretched Cluster will have four hybrid nodes at each site. What is the recommended storage policy to ensure cross-site and local protection, using storage as efficiently as possible?

- A. Site disaster tolerance – None keep data on Preferred (stretched cluster) Failures to tolerate – 1 failure – RAID-1 (Mirroring)
- B. Site disaster tolerance – Dual site mirroring (stretched cluster) Failures to tolerate – 1 failure – RAID-5 (Erasure Coding)
- C. Site disaster tolerance – Dual site mirroring (stretched cluster) Failures to tolerate – No data redundancy
- D. Site disaster tolerance – Dual site mirroring (stretched cluster) Failures to tolerate – 1 failure – RAID-1 (Mirroring)

Answer: B

NEW QUESTION 8

What is validated by running the Proactive VM Creation test in vCenter on a VxRail cluster?

- A. vSAN operates successfully
- B. Network firewalls are configured correctly
- C. vSAN has sufficient storage capacity
- D. Network performance is sufficient

Answer: D

NEW QUESTION 9

In addition to hardware monitoring, what is the purpose of the Dell PTAgent service on a VxRail node?

- A. Hardware discovery and firmware installation
- B. VxRail node discovery and software upgrades
- C. BOSS upgrade and firmware installation
- D. Hardware discovery and VxRail VIB installation

Answer: A

NEW QUESTION 10

Match each component of the VxRail HCI System Software to its description.

Software Component	Description
Local Cluster Management	Uses a database and a message queue to facilitate the necessary sequence of transactions for automation and orchestration of processes
Backend and Downstream APIs	Provides communication to the components that make up a vSAN cluster
SmartFabric Services	Provides automated network provisioning capabilities to the VxRail management platform
Upstream APIs	Built to provide simplified management experience and the services are exposed using REST APIs for SDDC solutions
VMware Connectors	Provides a subset of the capabilities such as Lifecycle Management and Cluster Operations services

- A. Mastered
- B. Not Mastered

Answer: A

Explanation:

Software Component	Description
Local Cluster Management	Backend and Downstream APIs
Backend and Downstream APIs	Local Cluster Management
SmartFabric Services	Upstream APIs
Upstream APIs	SmartFabric Services
VMware Connectors	VMware Connectors

NEW QUESTION 10

A systems engineer is deploying a VxRail cluster. They want to ensure that configuration issues can be avoided when expanding this cluster. Which actions need to be performed?

- A. Verify VxRail nodes are racked and connected to the ToR switches Validate the network environment
- B. Validate that no pending and unfinished jobs are running on the servers Verify that the server and storage components are working properly
- C. Validate that the latest updates and patches are installed in the system Validate that no pending and unfinished jobs are running on the servers
- D. Verify the configuration settings initially captured in PEQ Validate the storage environment

Answer: C

NEW QUESTION 13

During the activation of Internal SRS, the implementation engineer receives a message that the deployment has failed What is a possible cause?

- A. SRS VE Gateway on the same subnet as the VxRail Manager
- B. VxRail status already set to installed' in IB database
- C. Site ID mismatch between the IB database and the SRS Wizard
- D. Witness Gateway not configured following Dell best practices

Answer: A

NEW QUESTION 18

Which requirement must be met when expanding a 3-node VxRail G560F cluster with a fourth G Series node in the same chassis?

- A. PCIe network card must be added to all nodes
- B. Node requires only the same drive configuration
- C. Node hardware must be identical to the other three nodes
- D. New node must be at the same VxRail version as existing nodes

Answer: B

NEW QUESTION 21

What is a consideration when implementing a custom VDS on a VxRail cluster?

- A. Used by multiple clusters managed by a single vCenter instance
- B. Supported with external and internal vCenter Servers
- C. Supports only four NIC uplinks
- D. Supports only two NIC uplinks

Answer: B

NEW QUESTION 26

What is a difference between vSAN Data-In-Transit Encryption and vSAN Data-At-Rest-Encryption?

- A. Data-In-Transit Encryption: Encrypts traffic between VMs and the VxRail nodes Data-At-Rest Encryption: Encrypts traffic between VxRail nodes only
- B. Data-In-Transit Encryption: Does not require a Key Management Server Data-At-Rest Encryption: Requires a Key Management Server
- C. Data-In-Transit Encryption: Key Management Server must reside on the vSAN cluster Data-At-Rest Encryption: Key Management Server can reside on the vSAN cluster
- D. Data-In-Transit Encryption: Addresses fear of media theft Data-At-Rest Encryption: Addresses fear of rogue administrators

Answer: A

NEW QUESTION 28

A systems engineer needs to check the health of the nodes and the system VMs to prevent complications or failures during VxRail upgrades. Which tool must be used to perform the task?

- A. VxVerify
- B. CloudIQ
- C. SolVe Online
- D. VxRail ACE

Answer: C

NEW QUESTION 31

When preparing to generate an As-Built Configuration Report, it is determined that the VxRail Configuration JSON file was not saved from the Deployment Wizard. What actions must be taken to retrieve the JSON file?

- A. SSH to the VxRail Manager VM with the mystic user SU to rootGo to the /opt/VxRail/config directorySCP the initial-config json file to a local location
- B. Log in to vCenter with the vSphere Client with the vCenter Server Management user Go to Monitor > VxRail > Last Configuration Data SentUse the Download option
- C. Open an FTP connection to the VxRail Manager VM with the mystic user Go to the /var/lib/vmware-marvin directoryGET the config-initial json file
- D. Log in to vCenter with the vSphere Client with the vCenter Administration user Go to Configure > VxRail > SystemUse the Product Documentation option

Answer: B

NEW QUESTION 36

An implementation engineer is in the validation phase of a VxRail deployment with two Dell EMC ToR switches. Which command should they run on each of the ToR switches to validate that Link Aggregation has been configured according to Dell best practices for VxRail node interfaces?

- A. show network-policy profile
- B. show interface status
- C. show port-channel summary
- D. show interface

Answer: A

NEW QUESTION 40

What data protection option is included with VxRail?

- A. vSphere Replication NetWorker
- B. PowerProtect Software Data Domain Cloud Tier
- C. RecoverPoint for VM vSphere Replication
- D. RecoverPoint for VM Avamar

Answer: C

NEW QUESTION 42

What is the minimum number of VxRail nodes required for a vSAN storage policy with RAID-6 (Erasure Coding)?

- A. 4
- B. 5
- C. 6
- D. 7

Answer: C

NEW QUESTION 44

An implementation engineer is tasked with setting up RecoverPoint for VMs on a single G Series chassis. How many VMs are licensed to be protected on the cluster?

- A. 5
- B. 10
- C. 15
- D. 20

Answer: C

NEW QUESTION 46

What is the recommended format for host names when using the VxRail Deployment Wizard for an External vCenter solution?

- A. FQDN for vCenter Server/Host name for VxRail Manager
- B. Host name for both vCenter Server and for VxRail Manager
- C. FQDN for both vCenter Server and for VxRail Manager
- D. Host name for vCenter Server FQDN for VxRail Manager

Answer: A

NEW QUESTION 47

An implementation engineer is tasked with setting up RecoverPoint for VMs on a new 4-node E Series VxRail duster How many VMs are licensed to be protected on the cluster?

- A. 5
- B. 10
- C. 20
- D. 25

Answer: C

NEW QUESTION 49

What is a consideration when expanding a VxRail cluster? (Choose two.)

- A. Mixing of All-Flash and all-NVMe nodes in a cluster is not allowed
- B. Expanding a cluster to 64 nodes requires a 25 GbE network
- C. G Series clusters can be expanded only with G Series nodes
- D. 1 GbE must be hybrid and single processor node type

Answer: BC

NEW QUESTION 53

In a VxRail Stretched Cluster deployment of 8 nodes on between sites?

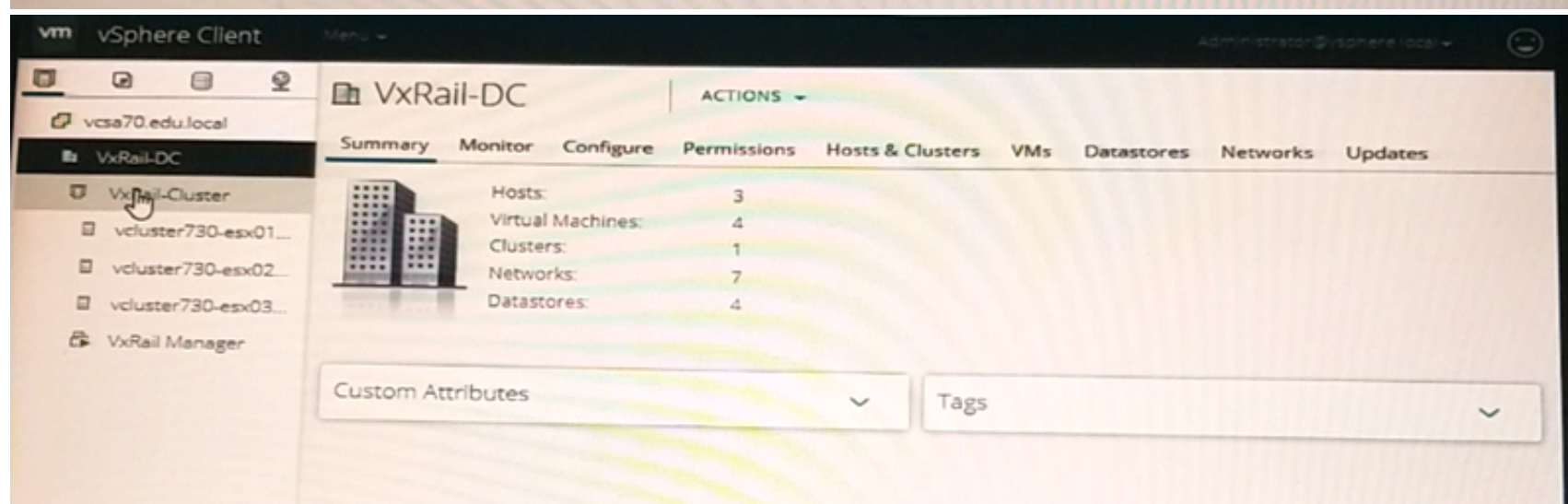
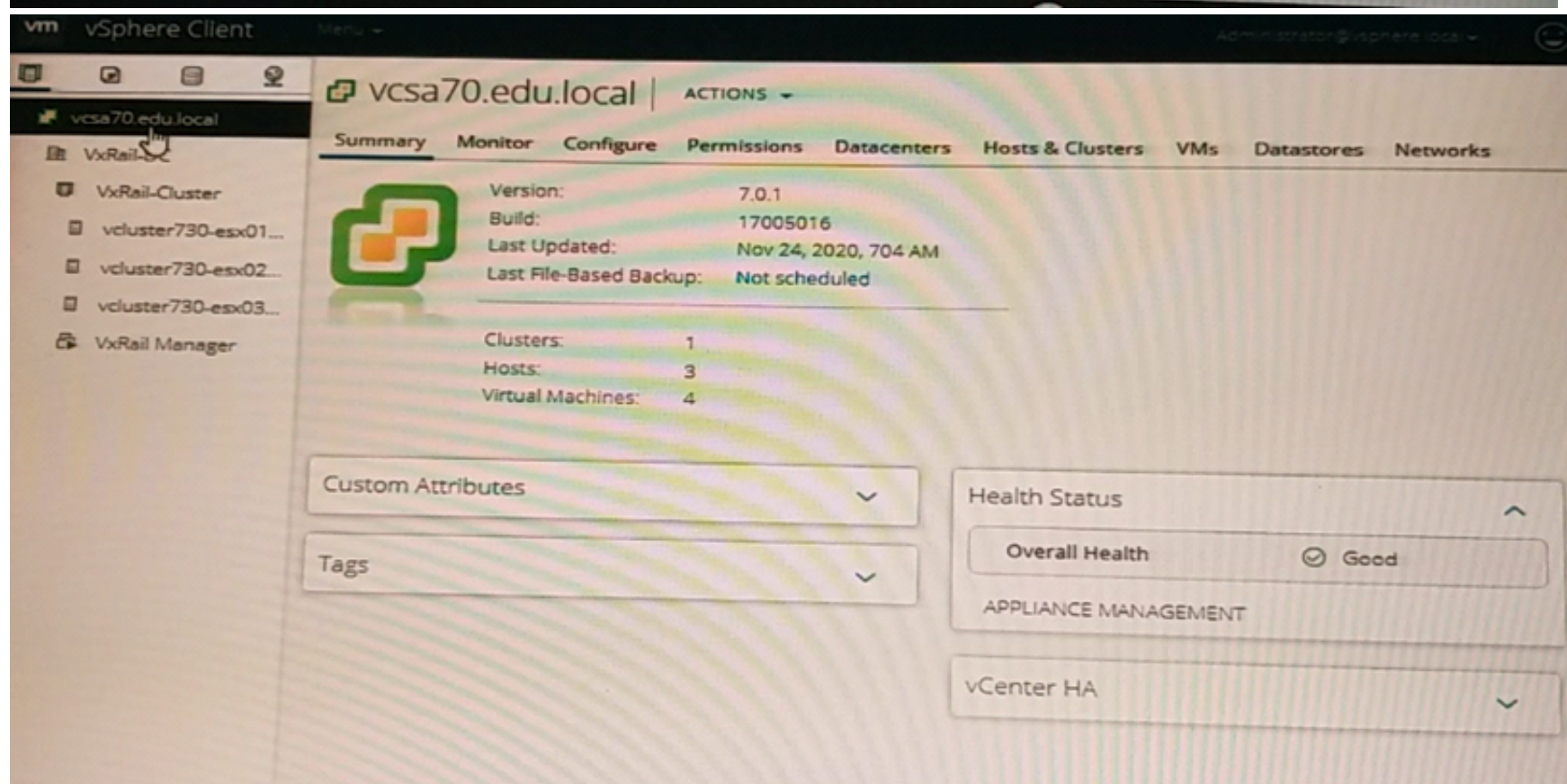
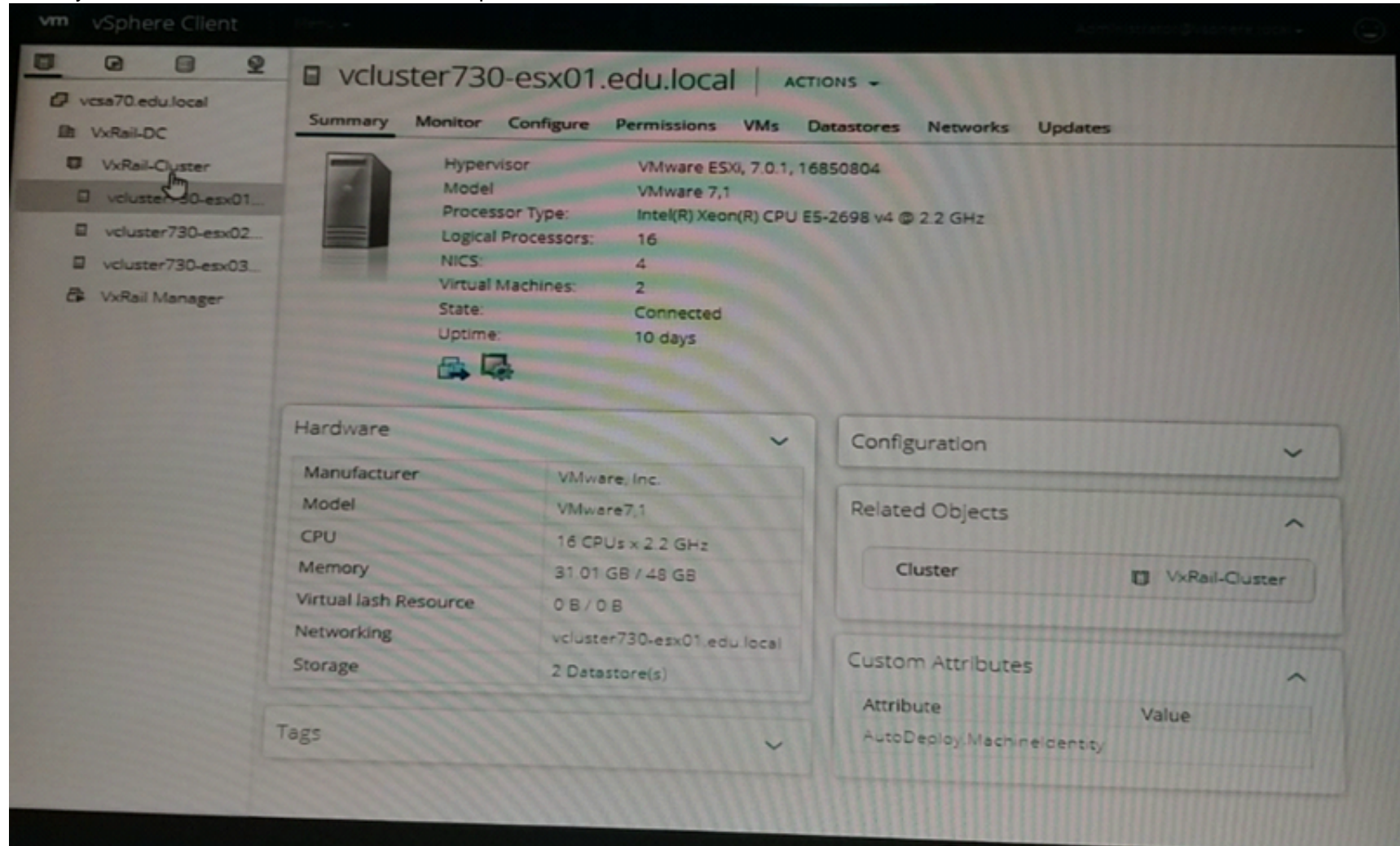
- A. Primary to Witness site RTT: < 250 ms Secondary to Witness site RTT: < 250 ms Primary to Secondary site RTT: < 5 ms
 B. Primary to Witness site RTT: < 150 ms Secondary to Witness site RTT: < 150 ms Primary to Secondary site RTT: < 10 ms
 C. Primary to Witness site RTT: < 200 ms Secondary to Witness site RTT: < 200 ms Primary to Secondary site RTT: < 5 ms
 D. Primary to Witness site RTT: < 200 ms Secondary to Witness site RTT: < 200 ms Primary to Secondary site RTT: < 10 ms

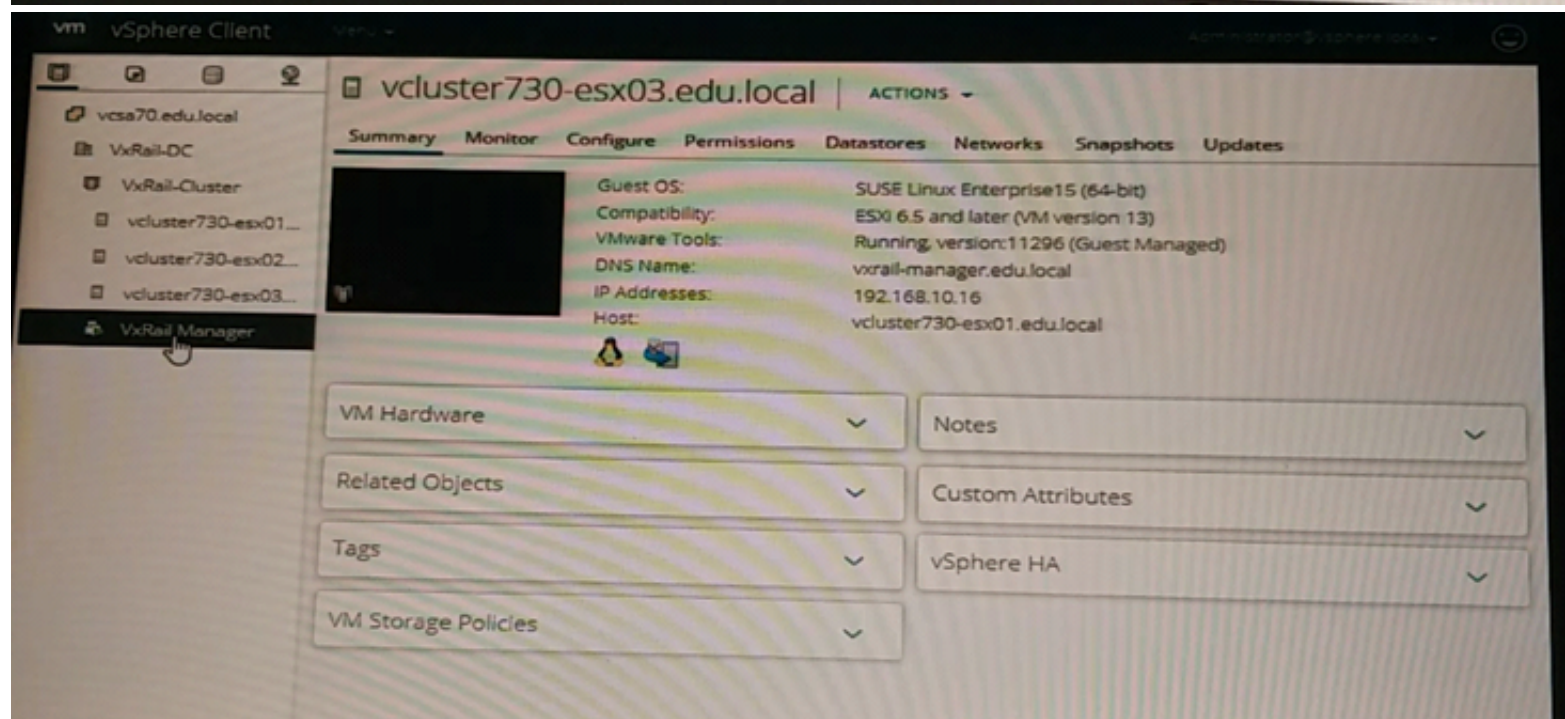
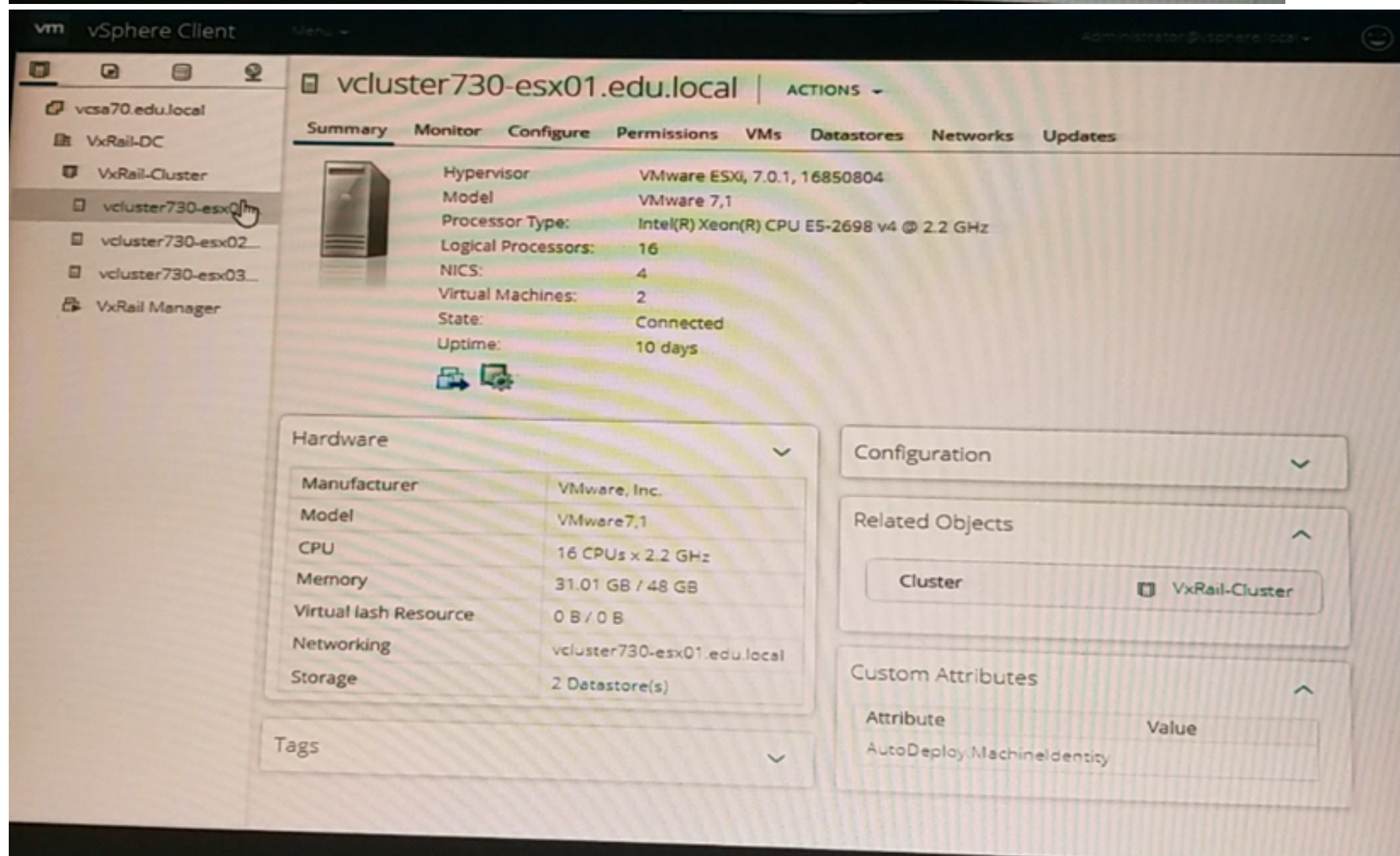
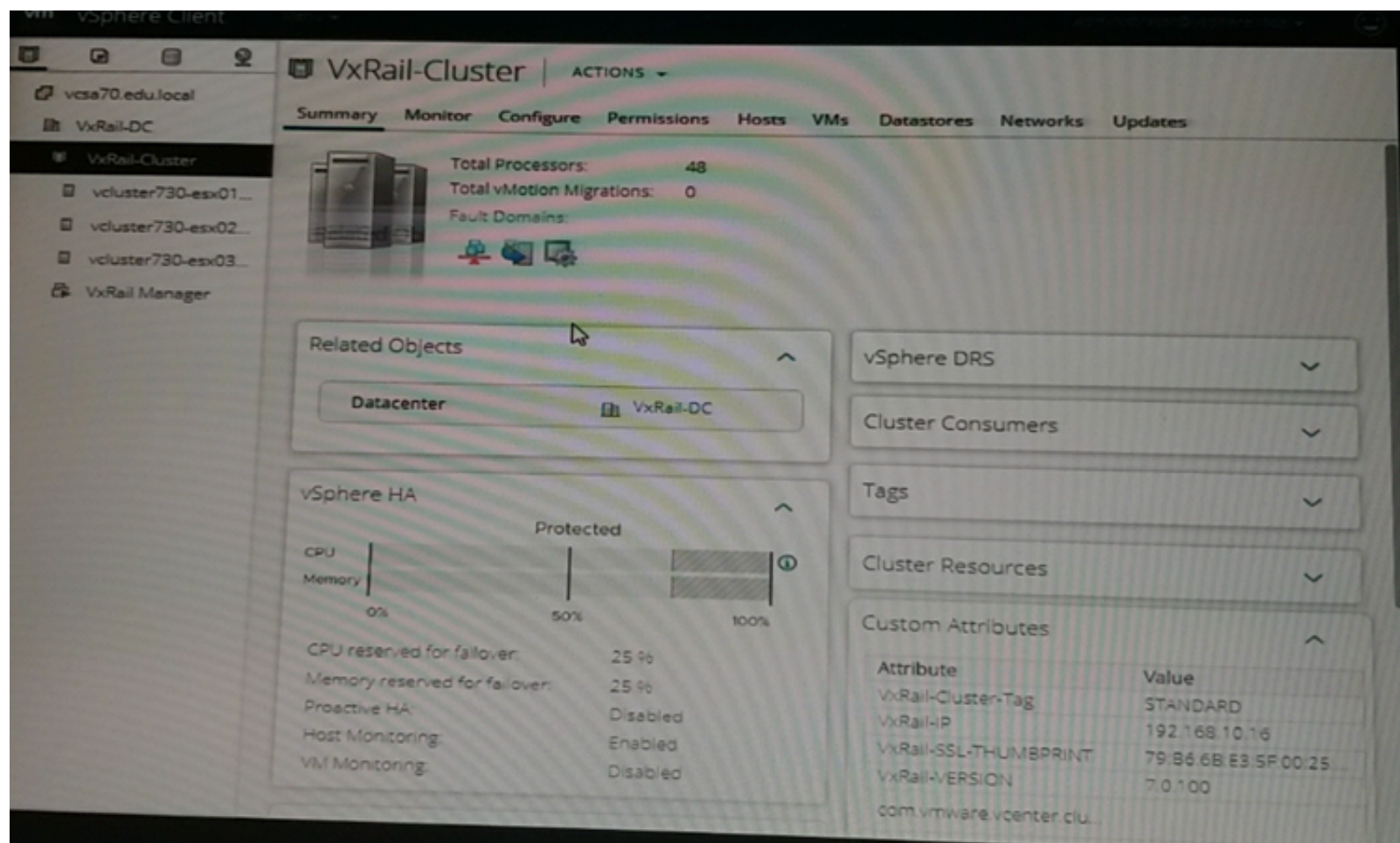
Answer: B

NEW QUESTION 58

After implementation, the implementation engineer observes errors from both VxRail Manager and vCenter Server. Dell EMC support has requested a log bundle containing only the required log files. Using the simulator, create and download a log bundle for Dell EMC support.

When you have finished, continue to the next question.





- A. Mastered
- B. Not Mastered

Answer: A

Explanation:

Pending

Send your suggestions for this question.

NEW QUESTION 63

Which vCenter object is created automatically when deploying VxRail with an external vCenter Server?

- A. Resource Pool
- B. Cluster
- C. Datacenter
- D. VxRail Management user account

Answer: B

NEW QUESTION 68

What are the requirements for a customer-supplied VDS in a VxRail deployment?

- A. 4 or 8 uplinksPort groups for Discovery, Management, vMotion, and vSAN only
- B. 2 or 4 uplinksPort groups for Discovery, Management, vMotion, and vSAN only
- C. 2 or 4 uplinksPort groups for Discovery, Management vCenter Server, vMotion, and vSAN
- D. 4 or 8 uplinksPort groups for Discovery, Management, vCenter Server, vMotion, and vSAN

Answer: D

NEW QUESTION 73

A systems engineer needs to ensure that the VxRail system is healthy and any issues found are addressed prior to starting an upgrade process. Where in the vSphere Client can they review alarms and overall vSAN health?

- A. Triggered Alarms > Issues and Alarms > All issues Triggered Alarms > vSAN > Skyline Health
- B. Monitor > All Issues > Issues and Alarms Monitor > vSAN > Health
- C. Triggered Alarms > All Issues > Issues and Alarms Triggered Alarms > vSAN > Health
- D. Monitor > Issues and Alarms > All issues Monitor > vSAN > Skyline Health

Answer: B

NEW QUESTION 76

Which VxRail model can only be installed with static rack rails?

- A. D Series
- B. P Series
- C. S Series
- D. G Series

Answer: A

NEW QUESTION 81

What is a benefit of using the VxRail REST API?

- A. Remote upgrades of iDRAC related software only
- B. Automated security audit of VxRail clusters
- C. Automated log collection for VxRail clusters
- D. Polling for vSAN performance statistics

Answer: C

NEW QUESTION 82

Which VxRail Series is designed to support a VDI environment and requires a GPU card in each host?

- A. S Series
- B. V Series
- C. G Series
- D. P Series

Answer: A

NEW QUESTION 87

A systems engineer is performing a VxRail upgrade in a VMware Horizon VDI cluster All hosts are put in Maintenance Mode. What action does the engineer need to perform on each host once the upgrade has been completed?

- A. From the Connection Server run IcMaintcmd to delete the parent VMs and exit Maintenance Mode for each host
- B. From the Connection Server, run IcMaintcmd to take the hosts out of Maintenance Mode and reboot them
- C. Set the InstantClone Maintenance annotation value to the original value
- D. Set the InstantClone Maintenance annotation value to 2

Answer: A

NEW QUESTION 90

.....

Thank You for Trying Our Product

We offer two products:

1st - We have Practice Tests Software with Actual Exam Questions

2nd - Questions and Answers in PDF Format

DES-6322 Practice Exam Features:

- * DES-6322 Questions and Answers Updated Frequently
- * DES-6322 Practice Questions Verified by Expert Senior Certified Staff
- * DES-6322 Most Realistic Questions that Guarantee you a Pass on Your FirstTry
- * DES-6322 Practice Test Questions in Multiple Choice Formats and Updatesfor 1 Year

100% Actual & Verified — Instant Download, Please Click
[Order The DES-6322 Practice Test Here](#)